

LCD TELEVISION

SERVICE MANUAL

LC-(26-37)HU26S

CONTENTS

Safety precautions.....	1
Alignment instructions	3
Method of software upgrading.....	6
Working principle analysis of the unit.....	12
Block diagram.....	13
IC block diagram.....	14
Wiring diagram	19
Troubleshooting guide	20
Schematic diagram.....	25
APPENDIX-A: Assembly list	
APPENDIX-B: Exploded View	

Attention: This service manual is only for service personnel to take reference with. Before servicing please read the following points carefully.

Safety precautions

1. Instructions

Be sure to switch off the power supply before replacing or welding any components or inserting/plugging in connection wire. Anti static measures to be taken (throughout the entire production process!):

- a) Do not touch here and there by hand at will;
- b) Be sure to use anti static electric iron;
- c) It's a must for the welder to wear anti static gloves.

Please refer to the detailed list before replacing components that have special safety requirements. Do not change the specs and type at will.

2. Points for attention in servicing of LCD

2.1 Screens are different from one model to another and therefore not interchangeable. Be sure to use the screen of the original model for replacement.

2.2 The operation voltage of LCD screen is 700-825V. Be sure to take proper measures in protecting yourself and the machine when testing the system in the course of normal operation or right after the power is switched off. Please do not touch the circuit or the metal part of the module that is in operation mode. Relevant operation is possible only one minute after the power is switched off.

2.3 Do not use any adapter that is not identical with the TV set. Otherwise it will cause fire or damage to the set.

2.4 Never operate the set or do any installation work in bad environment such as wet bathroom, laundry, kitchen, or nearby fire source, heating equipment and devices or exposure to sunlight etc. Otherwise bad effect will result.

2.5 If any foreign substance such as water, liquid, metal slices or other matters happens to fall into the module, be sure to cut the power off immediately and do not move anything on the module lest it should cause fire or electric shock due to contact with the high voltage or short circuit.

2.6 Should there be smoke, abnormal smell or sound from the module, please shut the power off at once. Likewise, if the screen is not working after the power is on or in the course of operation, the power must be cut off immediately and no more operation is allowed under the same condition.

2.7 Do not pull out or plug in the connection wire when the module is in operation or just after the power is off because in this case relatively high voltage still remains in the capacitor of the driving circuit. Please wait at least one minute before the pulling out or plugging in the connection wire.

2.8 When operating or installing LCD please don't subject the LCD components to bending, twisting or extrusion, collision lest mishap should result.

2.9 As most of the circuitry in LCD TV set is composed of CMOS integrated circuits, it's necessary to pay attention to anti statics. Before servicing LCD TV make sure to take anti static measure and ensure full grounding for all the parts that have to be grounded.

2.10 There are lots of connection wires between parts behind the LCD screen. When servicing or moving the set please take care not to touch or scratch them. Once they are damaged the screen

would be unable to work and no way to get it repaired.

If the connection wires, connections or components fixed by the thermotropic glue need to disengage when service, please soak the thermotropic glue into the alcohol and then pull them out in case of damage.

2.11 Special care must be taken in transporting or handling it. Exquisite shock vibration may lead to breakage of screen glass or damage to driving circuit. Therefore it must be packed in a strong case before the transportation or handling.

2.12 For the storage make sure to put it in a place where the environment can be controlled so as to prevent the temperature and humidity from exceeding the limits as specified in the manual. For prolonged storage, it is necessary to house it in an anti-moisture bag and put them altogether in one place. The ambient conditions are tabulated as follows:

Temperature	Scope for operation	0 ~ +50 °C
	Scope for storage	-20 ~ +60 °C
Humidity	Scope for operation	20% ~ 85%
	Scope for storage	10% ~ 90%

2.13 Display of a fixed picture for a long time may result in appearance of picture residue on the screen, as commonly called “ghost shadow”. The extent of the residual picture varies with the maker of LCD screen. This phenomenon doesn’t represent failure. This “ghost shadow” may remain in the picture for a period of time (several minutes). But when operating it please avoid displaying still picture in high brightness for a long time.

3. Points for attention during installation

3.1 The front panel of LCD screen is of glass. When installing it please make sure to put it in place.

3.2 For service or installation it’s necessary to use specified screw lest it should damage the screen.

3.3 Be sure to take anti dust measures. Any foreign substance that happens to fall down between the screen and the glass will affect the receiving and viewing effect

3.4 When dismantling or mounting the protective partition plate that is used for anti vibration and insulation please take care to keep it in intactness so as to avoid hidden trouble.

3.5 Be sure to protect the cabinet from damage or scratch during service, dismantling or mounting.

Alignment instructions

1. Test equipment

PM5518 (video signal generator)

VG-849 (VGA signal generator)

CA210 (white balancer)

2 Alignment flow-chart

The alignment flow-chart is shown as fig-1

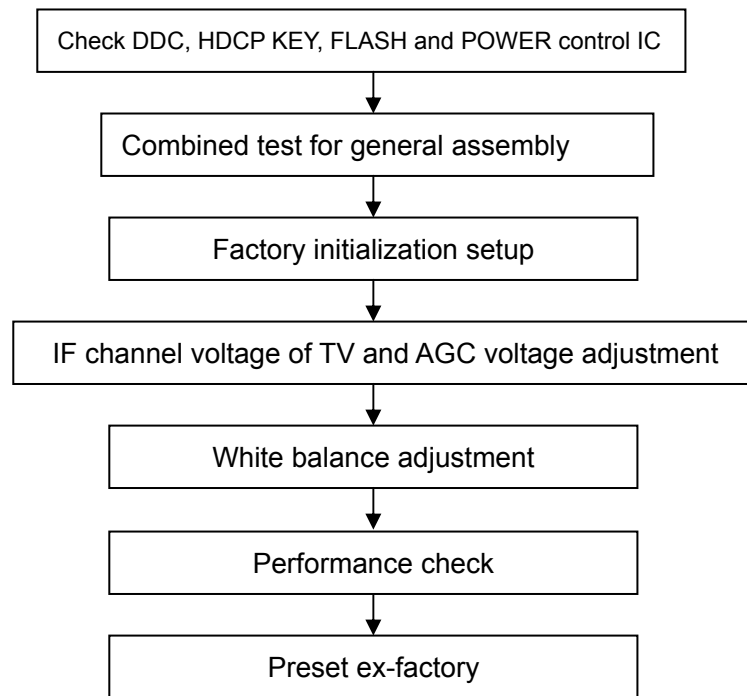


Fig-1 adjustment flow-chart

3 Unit adjustments

Connect all the boards according to wiring diagram, connect with power and observe the display.

Method for entering factory menu: press "INPUT", "2", "5", "8" and "0" in turn to enter factory menu; press "CH+" and "CH-" to select adjustment items and press "VOL+" and "VOL-" to adjust value items, press "MENU" continuously to exit.

3.1 Initialization

Enter factory menu, select "OPTION" and "HOTEL OPTION" sub-menu, adjustment of items to see table1.

Table1 sub-menu adjustment

Items	Preset	Introduce
HOTEL	0	1: HOTEL OPTION of factory menu is optional 0: HOTEL OPTION of factory menu is not optional
LOGO	1	1: display LOGO in no signal or turn on 0: no LOGO display
ADC PRESCALE	00A	Adjust according different power consumption
SIF PRESCALE	000	Adjust according different power consumption

BACK LIGHT	28	Adjust according different screen
ALL COLOR	1	1: white balance of each channel auto offset based on the HDMI white balance 0: white balance of each channel adjust the offset base separately
ISP	0	0: no unit upgrade on the assembly line 1: unit upgrade on the assembly line
NO STANDY	00	01: turn on; 00: memory function of turn on; 10: standby
INIT VOLUME	0-100	Volume of turn on
INIT CHANNEL	1-200	Channel of turn on
INIT SRC	Source	Source of turn on
EEPROM-MEMORAY RECALL	>	EEPROM Initialization (operate when EEPROM data chaos)

3.2 Adjustment for AFT voltage and AGC voltage of IF channel in TV

3.2.1 IF AFC adjustment

Disconnect J401(B face), input 38.9MHz PAL signal of 80dB from J401 near the socket, Adjust L404 to value 0.9V of TP402. Enter factory menu, adjust TDA4470 from BG to LL, input 33.9MHz SECAM signal of 80dB, adjust RP402 to value 0.9V of TP402, then wed J401.

3.2.2 IF AGC adjustment

Input 184.25MHz RF signal of 60DB from RF terminal, adjust RP401 to value 4V of TP404 and there should be no obvious snowy picture. Increase the signal to 90DBV and it should be display normally and no obvious noise.

3.3 White balance adjustment

3.3.1 white balance adjustment of HDMI

a. Input VG-848 signal from HDMI: TIMING854(800* 600/60Hz) and eighth level gray-scale signal of PAT920. Use color analyzer CA210 to adjust white balance.

b. Enter submenu of COLOR TEMP., Select 9300k of color temperature

c. Fixed value of B GAIN, adjust R GAIN and G GAIN, let the color coordinate of the seventh level be 285 and 293. Fixed value of B OFF, adjust R OFF and G OFF, let the color coordinate of second level be 285 and 293 and the brightness be about 3nit-10nit. Adjustment R GAIN, G GAIN, R OFF and G OFF repeatedly until the value of the two levels gray-scale be 285 and 293.

3.3.2 VGA/YPBPR/AV white balance check and correct

a. Input VG-848 signal of VGA: TIMING854(800* 600/60Hz) (PATIERN:CROSS) and auto adjust to full screen, then input PAT948 black/white signal, enter factory menu ADC ADJ, select AUTOTUNE and wait for OK display. Input PAT920(8 gray levels), check if the white balance is normal, if not, set ALL COLOR to 0 and fine adjust according the method of 3.3.1

b. connect VG-848 signal of YPBPR to YPBPR terminal and input TIMING972(1080i/60HZ) color bar of PAT908(include black/white bar), Enter submenu of ADC ADJ, Select AUTOTUNE and wait for OK display. Input PAT920(8 gray levels), check if the white balance is normal, if not, set ALL COLOR to 0 and fine adjust according the method of 3.3.2

c. Input AV signal(PM5518, 8 gray levels) to VIDEO terminal, check if the white balance is normal, if not, set ALL COLOR to 0 and fine adjust according the method of 3.3.2

Note: it can't set back to 1 once ALL COLOR changes to 0.

4 Software upgrade

When software upgrading please enter factory menu first, enter ISP of OPTION, set ISP to 1 and you can begin to upgrade. After upgrade finished, it needs to set ISP back to 0. If the picture can't display when upgrading, it needs to web J1 of 01S board. Please disconnect J1 again after upgrading.

5 Performance check

5.1 TV function

Enter searching menu → auto search, connect RF-TV terminal with central signal source and check if the picture is normal, if there are channels be skipped. Check TXT and parental control.

5.2 AV/S, YpbPr terminals

Input AV/S, YPbPr/YCbCr HD signal, check if it is normal.

5.3 VGA terminal

Insert VGA terminal, input VGA format signal of 640X480@60 Hz and check if the display is normal.

5.4 HDMI terminal

Insert HDMI terminal, input signal of 640 X 480@60 Hz signal and check if the display is normal.

5.5 check sound channel

Check the speaker and headphone of each channel.

5.6 RS232 terminal

Insert earphone to COM terminal and check if the long-distance control function is normal.

5.7 other function check

Check the turn on/turn off timer, asleep timer, picture/sound mode, OSD, freeze/mute, stereo, ect.

5.8 presetting before ex-factory

Item	Setting
PICTURE MODE	STANDARD
COLOR MODE	NORMAL
NR	WEAK
ZOOM	FULL
SOUND MODE	STANDARD
AVC	OFF

Item	Setting
BALANCE	50
VOLUME	50
SLEEP TIMER	OFF
TTX LANGUAGE	WEST
BLUE SCREEN	OFF

Item	Setting
OSD LANGUAGE	English
OSD HPOSITION	50
OSD VPOSITION	50
OSD HALFTONE	50
OSD DURATION	15

Method of software upgrading

1. The tools and software demanded

1) Please confirm that PC has the software of ISP_TOOL and install the parallel interface drive program Port95nt.

2) ISP_TOOL icon is bellow:

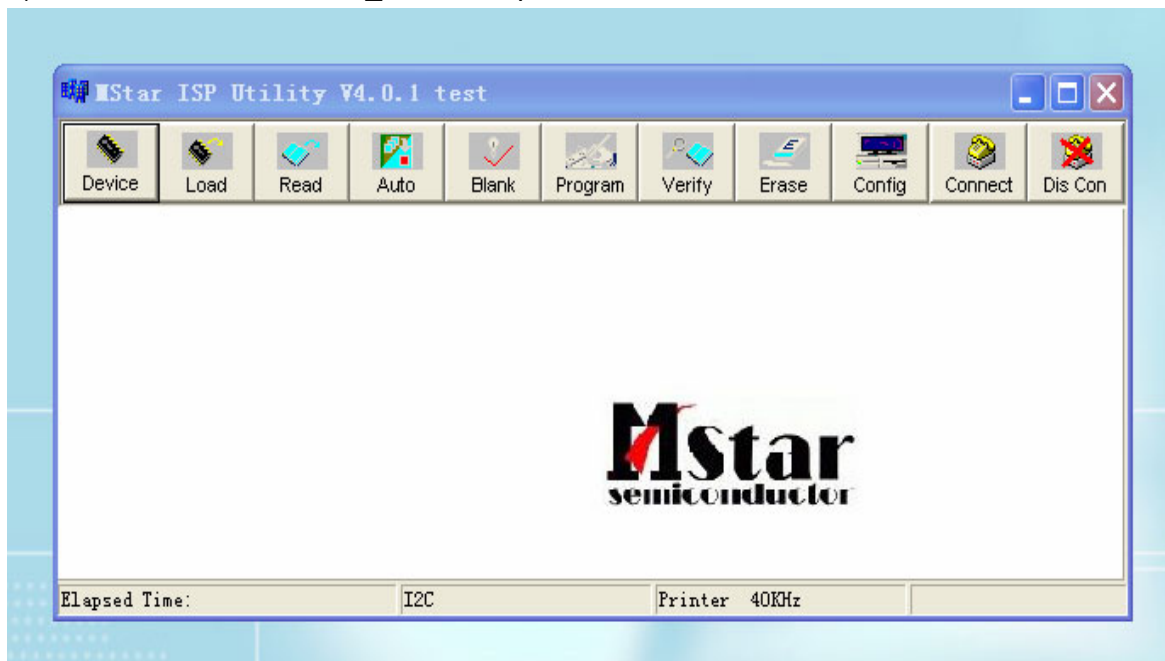


3) One serial cable (25 pins) and one VGA cable (15 pins), the serial cable connects the PC and the upgrade instrument, the VGA cable connects the TV and the upgrade instrument.

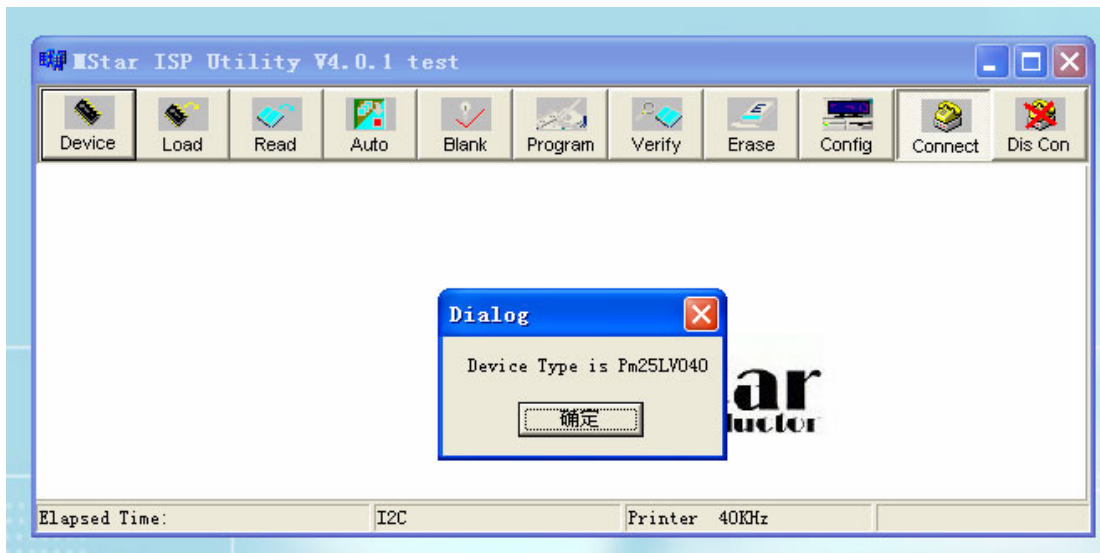
2. The steps for upgrading software

1) Please confirm that the connection wires and the upgrade instrument are connected well before the software written and then power on the TV.

2) Double click the icon ISP_TOOL to open it:

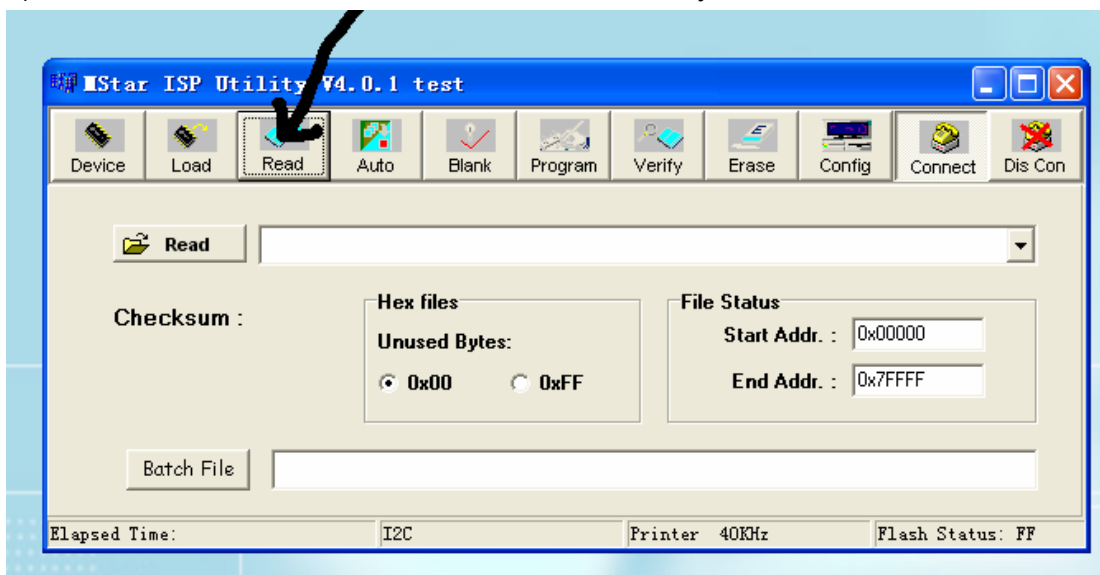


3) Press "Connect" to connect TV, if the connection is done successfully as shown below, then press "enter".

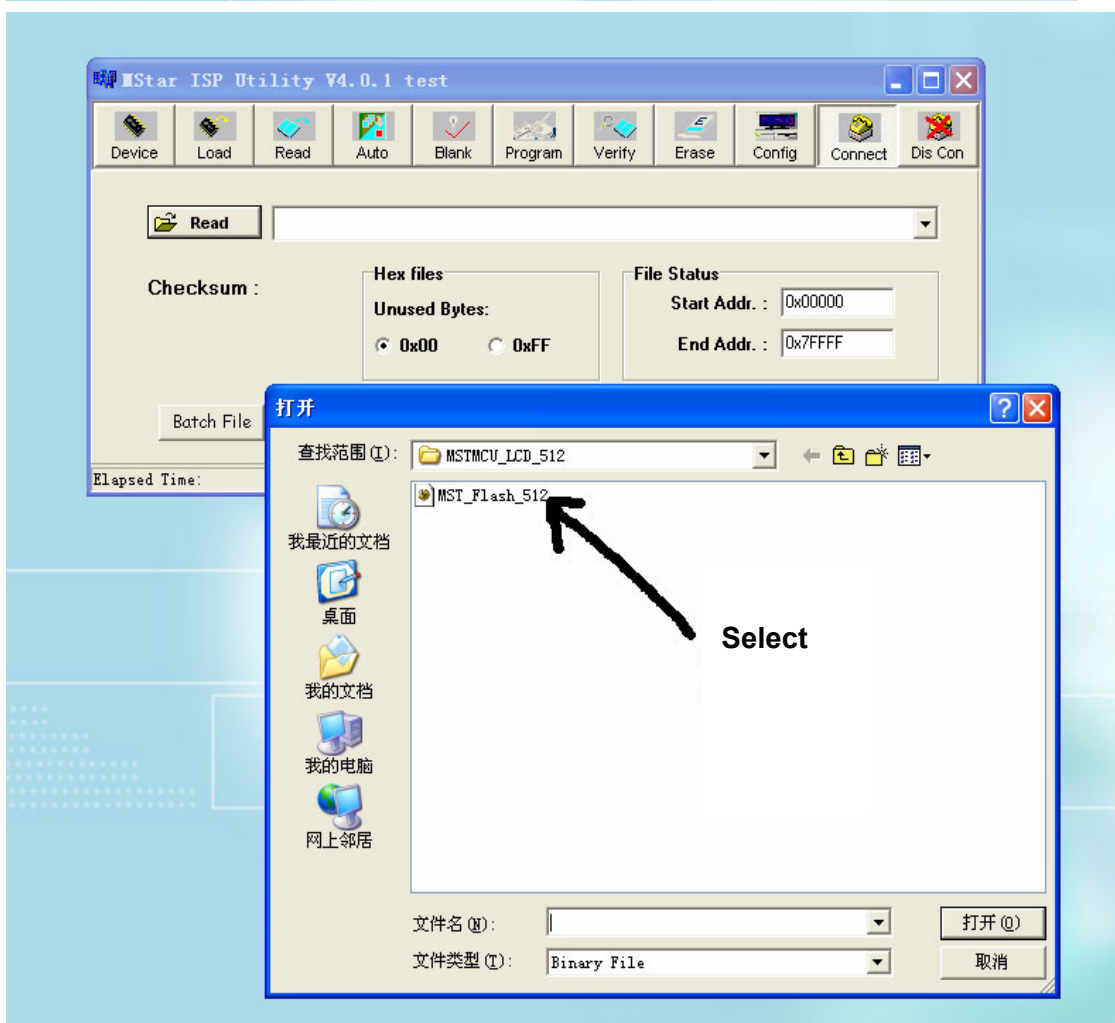
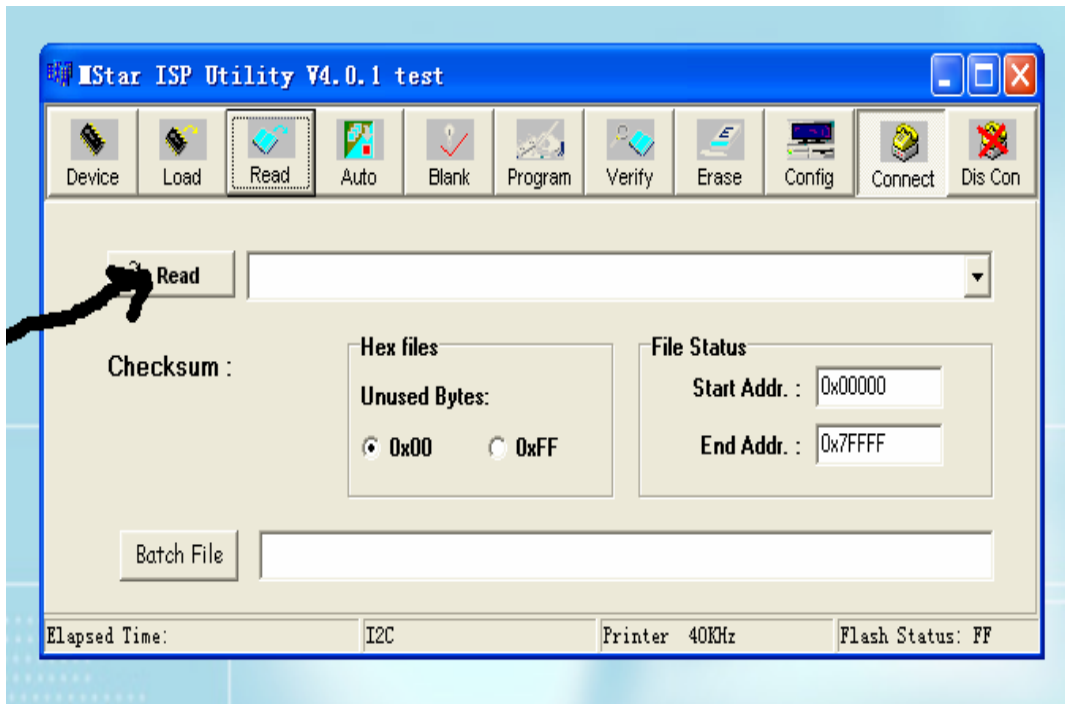


Note: if it appears error, check the connection wires and check if ISP item of the factory menu is set to 1, if not, please set it to 1.

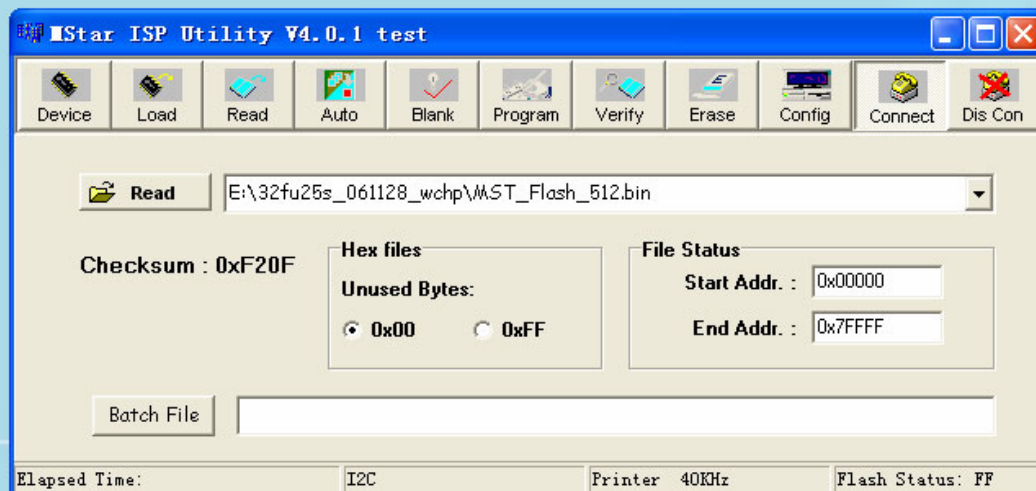
4) After connection is done, it needs to read the Binary document. Press “Read” as shown below:



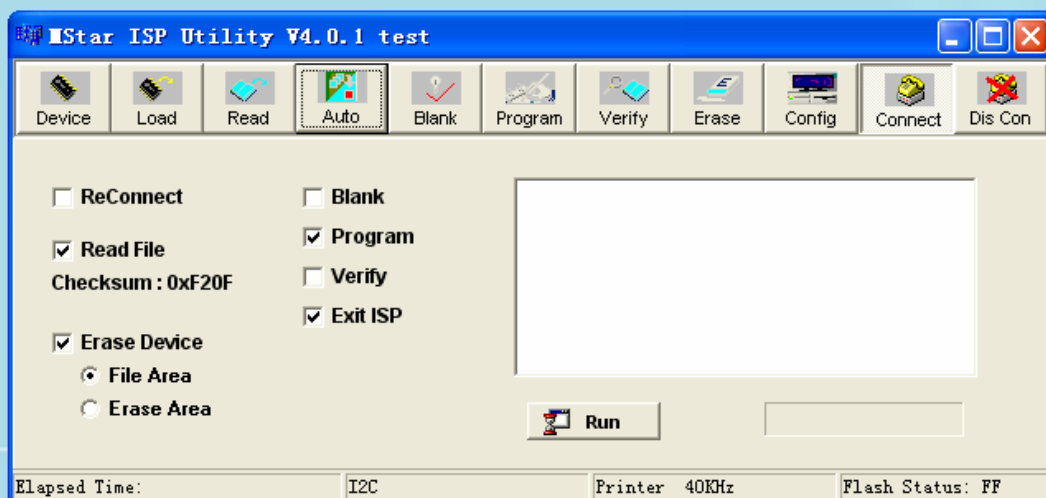
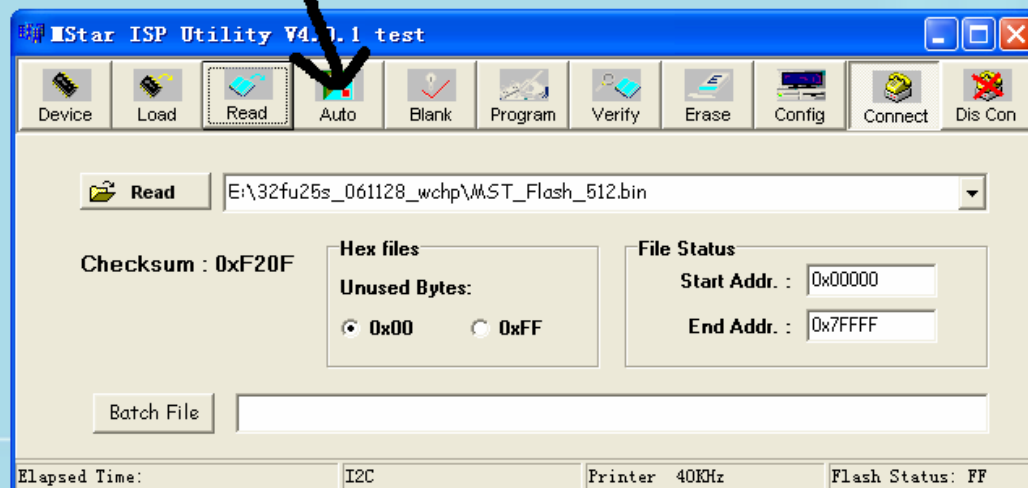
5) Search the document needed to write in the “Read” check box.



6) Select the document then the window will appear as shown below:



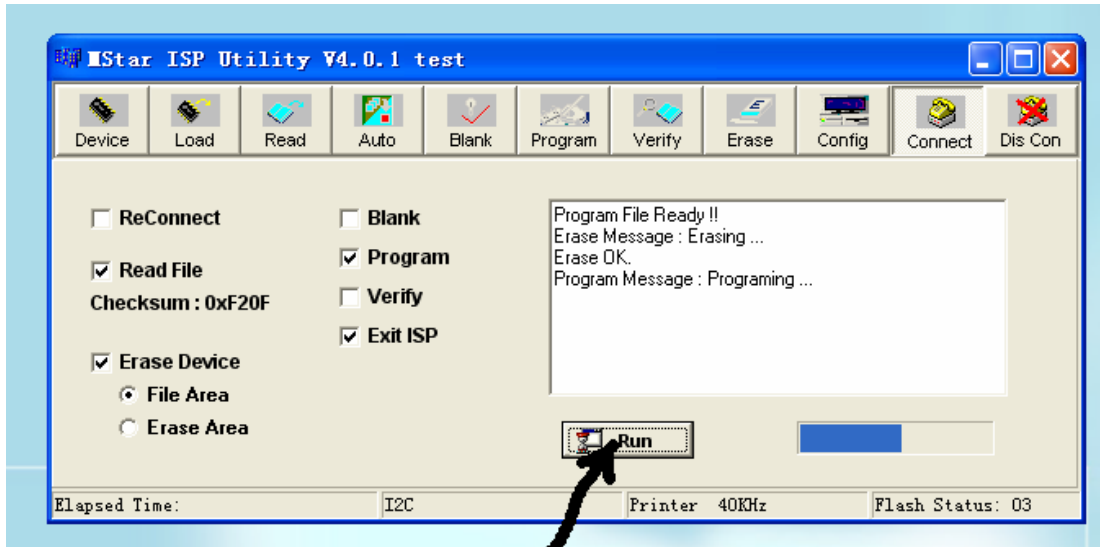
7) Press "Auto" to select the writing function.



Select the items shown in the picture above:

(a) Read File

- (b) Program
- (c) Exit ISP
- (d) Erase Device
- (e) File Area
- 8) Press "Run" to begin the writing program, wait till the blue bar is complete.



After writing, it will display OK:

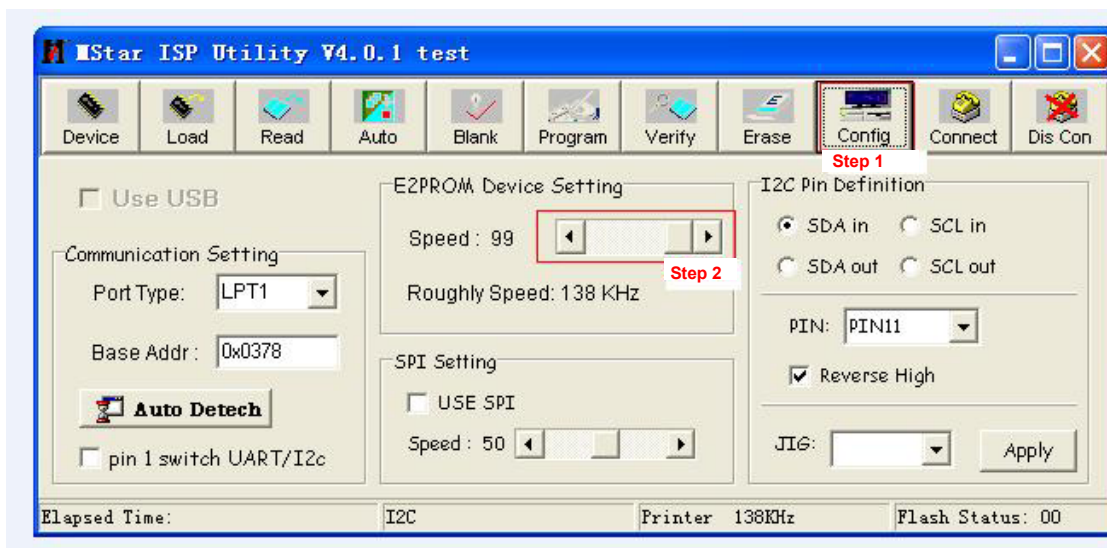


If there is error appeared (shown as below), press "Run" again to rewrite the program till it is success.



Note1: keep the connection well and don't cut off the power during the writing process.

Note2: the writing speed can be adjusted as shown below. Select "Config" then adjust Speed BAR, the value is bigger the speed is faster. But it is easier to appear error when increase the speed, so it need to select a suitable speed according the PC.



Working principle analysis of the unit

The RF signal received by antenna will be sent to tuner TUN401, then IF signal will be obtained through high amplifier and mixed frequency, through pre-intermediate amplified by V408, then it will be sent to acoustic surface-wave Z407 to do IF filter and get better IF characteristics, then it will be sent to N404 (TDA4470) to do intermediate amplification, phase-locked loop VCO and synchronous wave detection to get video signal TV-V; after pre-intermediate amplification IF will also be sent to acoustic surface-wave Z406 to do filter at the same time, then it will be sent to N404 to do intermediate amplification and output the second sound intermediate frequency signal (TV-SIF).

The TV-V signal output from TDA4470 together with TV-SIF will be sent to main IC NS4(MST9E88L).

Video signals of AV1/S, VGA, YPbPr and HDMI will be sent to MST9E88L, too.

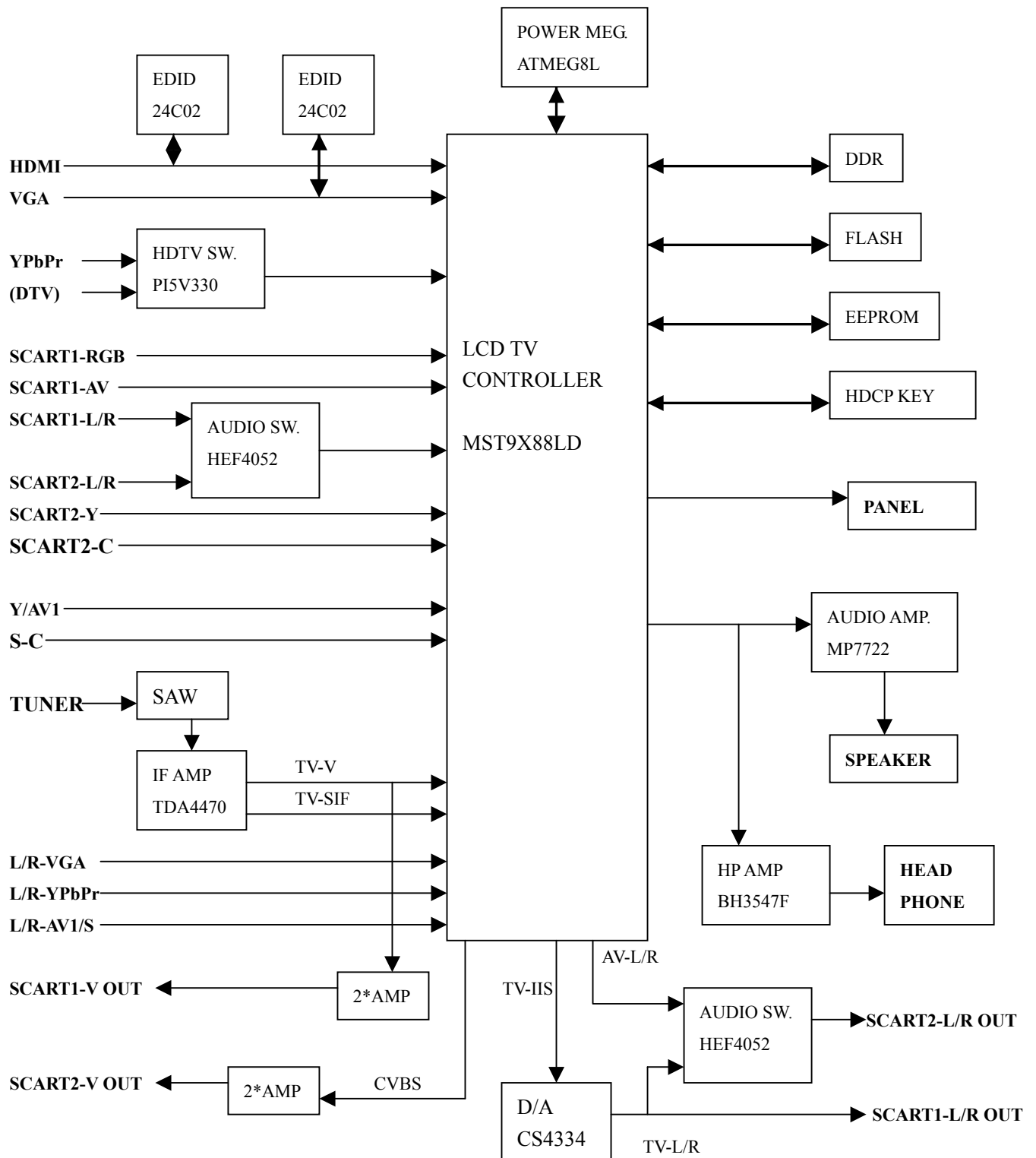
Video RGB of SCART1 and S-Y, S-C of SCART2 will still be sent to MST9E88L, and the audio signal of them via audio switch N302(HEF4052BT) selection after also sent to MST9E88L.

The main IC NS4(MST9E88L) is a high performance and fully integrated IC, which can realize HDMI processing, video demodulating, video switch selection, A/D and D/A conversion, interlace/de-interlace processing, modes conversion, OSD and low-voltage differential output, ect. And it also has functions of audio selection, processing and MCU.

The video signal via MST9E88L processing, output 4 pairs differential signal and 1 pair clock signal for LCD panel display. TV-V output from TDA4470 via double video amplifying, it will be sent to SCART1 for AV-OUT. AV processed by MST9E88L via double video amplifying will be sent to SCART2 for AV-OUT, too.

Audio signal via MST9E88L processing will be sent to sound amplifier N405 (MP7722DF) amplifying to speaker. The audio also sent to earphone amplifier N406(BH3547F) amplifying to earphone. TV audio signal will be sent to D/A converter NS6(DS4344) through I2S bus converting to analog audio signal TV-L/R, then sent to SCART1 for AV-OUT. At the same time, TV-L/R together with AV-L/R processed by MST9E88L will be sent to audio switch NS8(HEF4052BT), after selecting to SCART2 for AV-OUT.

Block diagram



2. MP7722DF

The MP7722 is a stereo 20W Class D Audio Amplifier. It is one of MPS's second generation of fully integrated audio amplifiers which dramatically reduces solution size by integrating the following:

180mΩ power MOSFETs

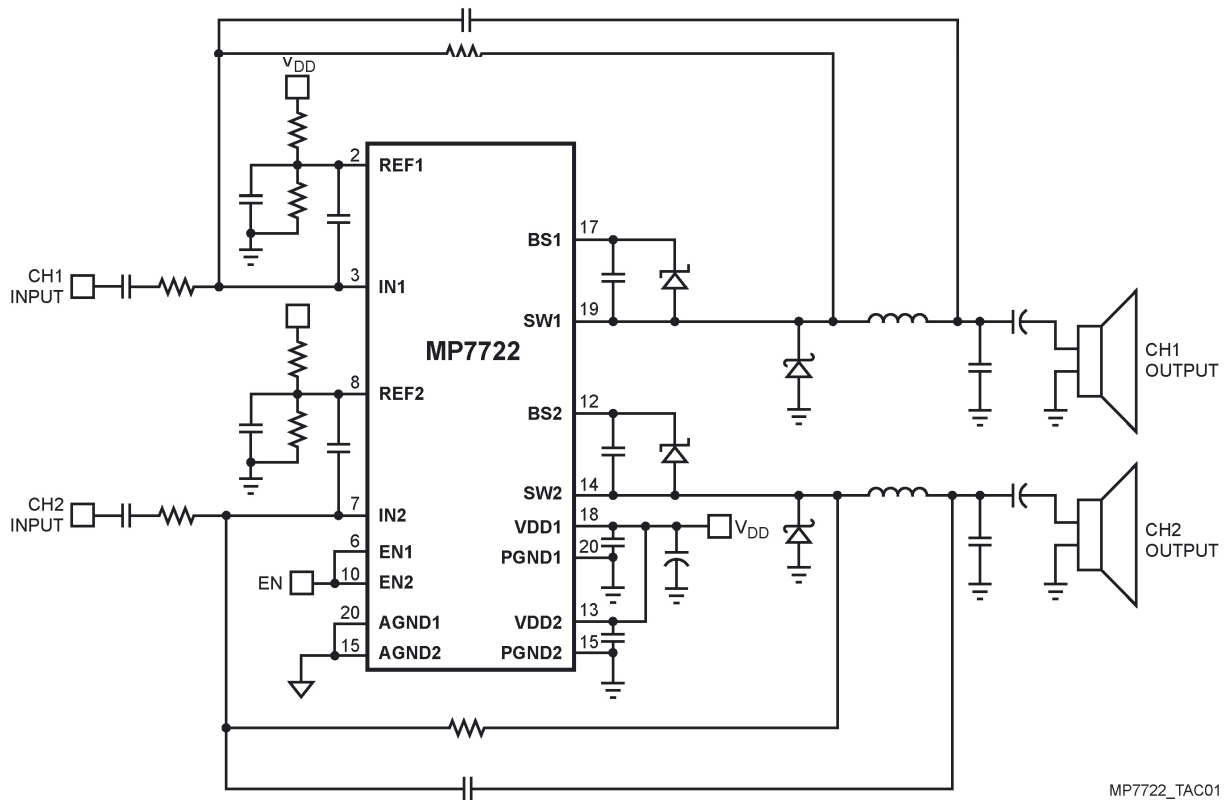
Startup / Shutdown pop elimination

Short circuit protection

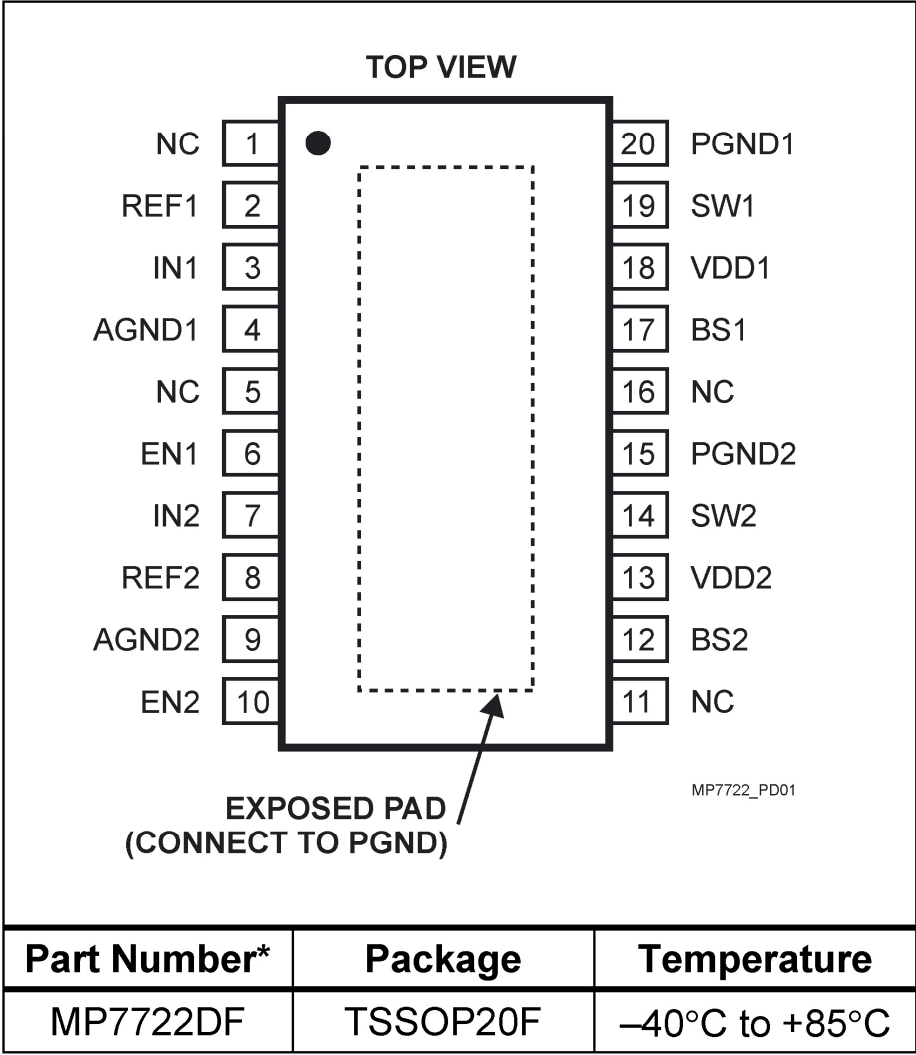
Mute / Standby

The MP7722 utilizes a single ended output structure capable of delivering 2 x 20W into 4Ω speakers. MPS Class D Audio Amplifiers exhibit the high fidelity of a Class A/B amplifier at efficiencies greater than 90%. The circuit is based on the MPS' proprietary variable frequency topology that delivers low distortion, fast response time and operates on a single power supply.

TYPICAL APPLICATION



PACKAGE REFERENCE



3. TDA4470

The TDA4470 is an integrated bipolar circuit for multi-standard video/sound IF(VIF/SIF) signal processing in TV/VCR and multimedia applications. The circuit processed all TV video IF signals with negative modulation (e.g., B/G standard), positive modulation (e.g., L standard) and the AM, FM/NICAM sound IF signals.

Block Diagram

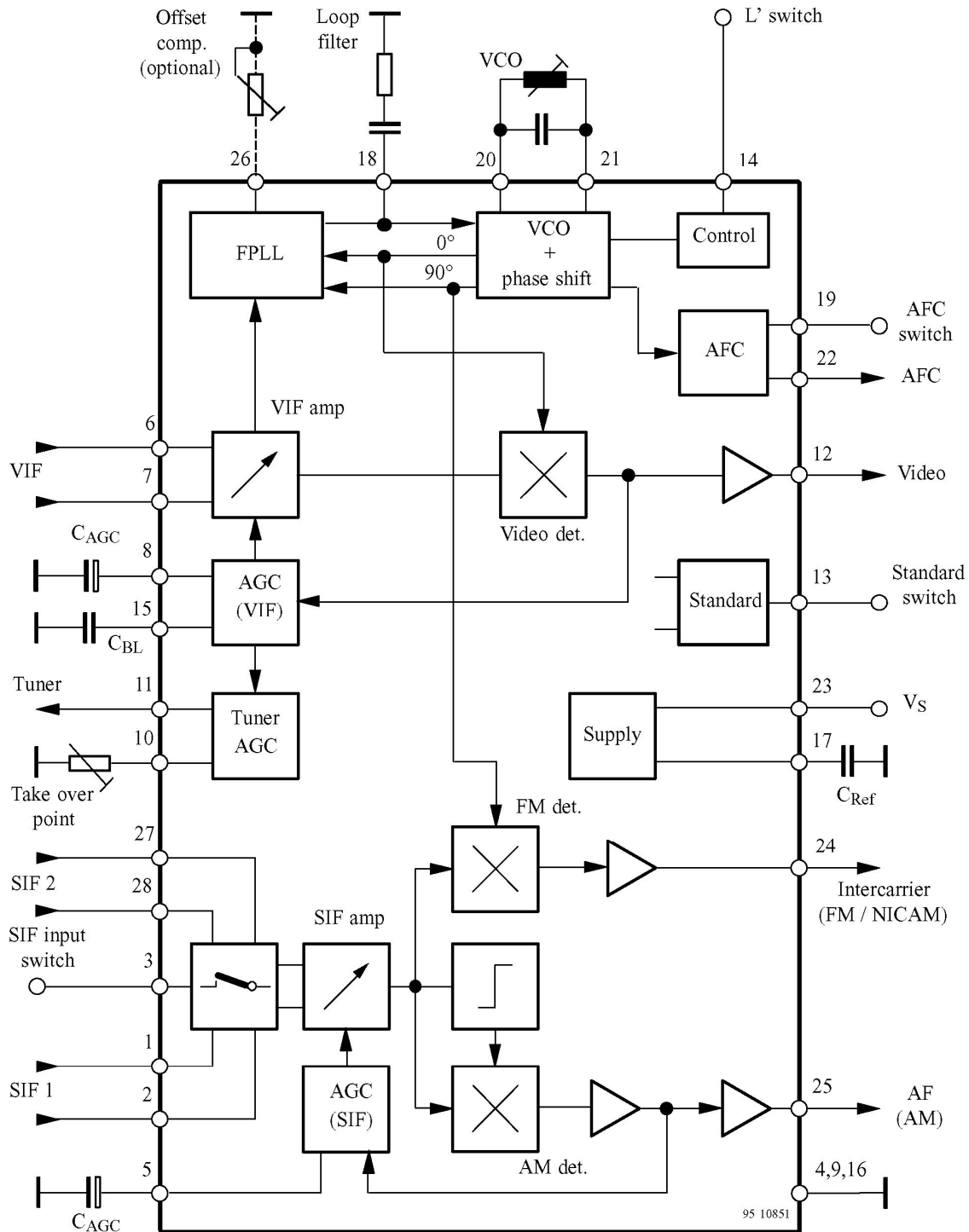


Figure 1. Block diagram

Pin Description

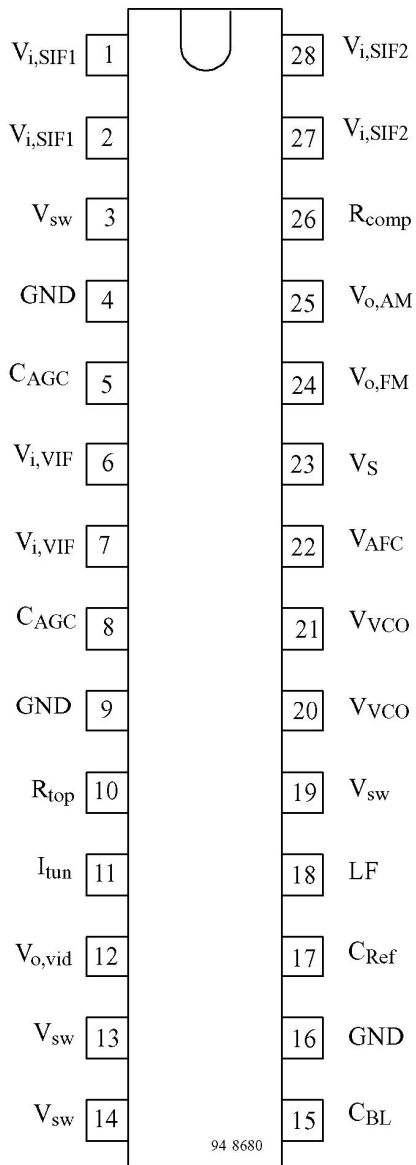
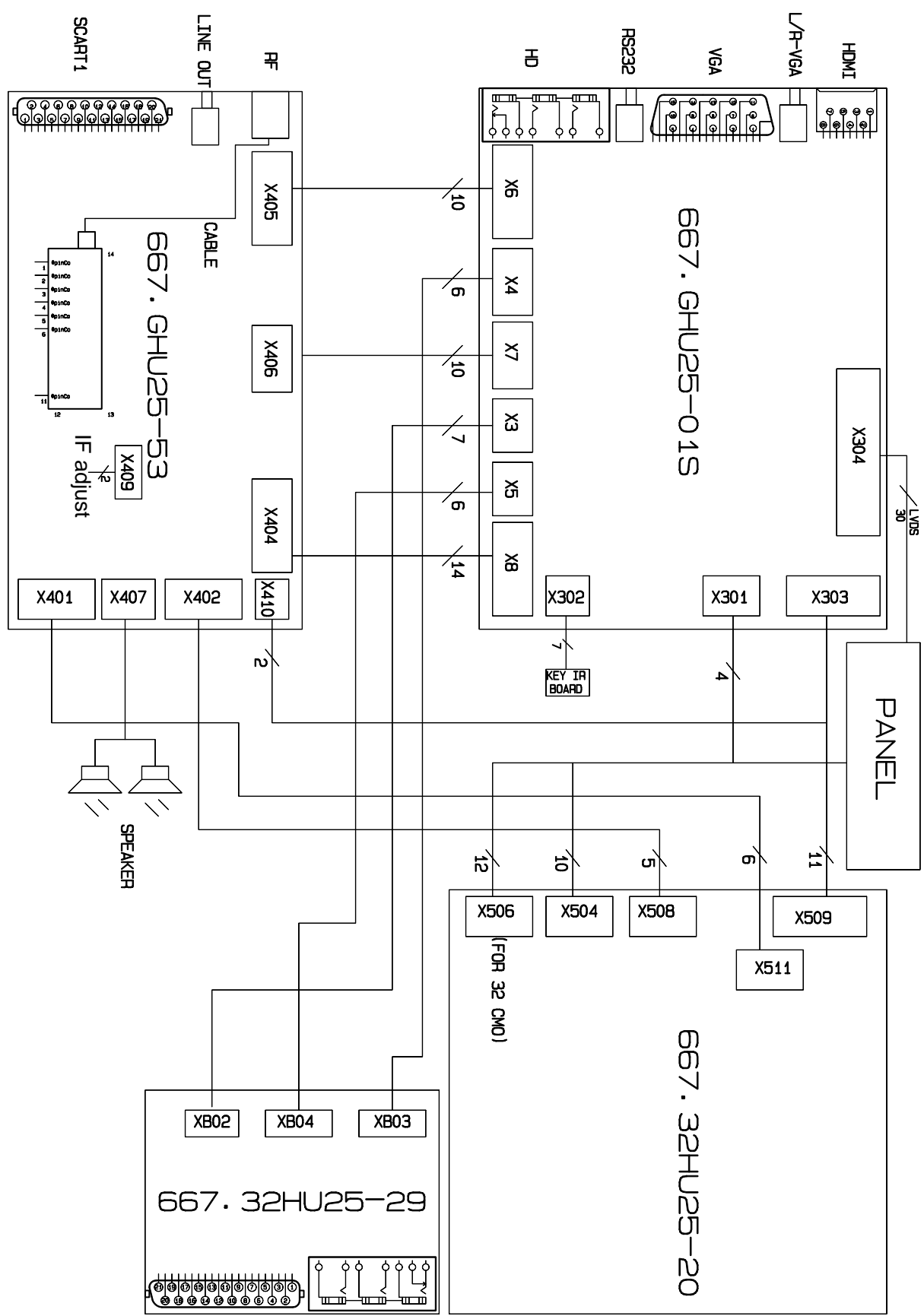


Figure 2. Pinning

Pin	Symbol	Function
1, 2	$V_{i, SIF1}$	SIF1 input (symmetrical)
3	V_{sw}	Input selector switch
4, 9, 16	GND	Ground
5	C_{AGC}	SIF-AGC (time constant)
6, 7	$V_{i, VIF}$	VIF input (symmetrical)
8	C_{AGC}	VIF-AGC (time constant)
10	R_{top}	Take over point, tuner AGC
11	I_{tun}	Tuner AGC output current
12	$V_{o,vid}$	Video output
13	V_{SW}	Standard switch
14	V_{SW}	L' switch
15	C_{bl}	Black level capacitor
17	C_{ref}	Internal reference voltage
18	LF	Loop filter
19	V_{sw}	AFC switch
20, 21	V_{VCO}	VCO circuit
22	V_{AFC}	AFC output
23	V_S	Supply voltage
24	$V_{O, FM}$	Intercarrier output
25	$V_{O, AM}$	AF output – AM sound
26	R_{comp}	Offset compensation
27, 28	$V_{i, SIF2}$	SIF 2 input (symmetrical)

Wiring diagram



Trouble shooting

1. Fault clearance

Before servicing please check to find the possible causes of the troubles according to the table below.

1.1 Antenna (signal):

Picture is out of focus or jumping	<ul style="list-style-type: none">● Bad status in signal receiving● Poor signal● Check if there are failures with the electrical connector or the antenna.● Check if the antenna is properly connected.
Fringe in picture	<ul style="list-style-type: none">● Check if the antenna is correctly oriented.● Maybe there is electric wave reflected from hilltop or building.
Picture is interfered by stripe shaped bright spots	<ul style="list-style-type: none">● Possibly due to interference from automobile, train, high voltage transmission line, neon lamp etc.● Maybe there is interference between antenna and power supply line. Please try to separate them in a longer distance.● Maybe the shielded-layer of signal wire is not connected properly to the connector.
There appear streaks or light color on the screen	<ul style="list-style-type: none">● Check if interfered by other equipment and if interfered possibly by the equipment like transmitting antenna, non-professional radio station and cellular phone.

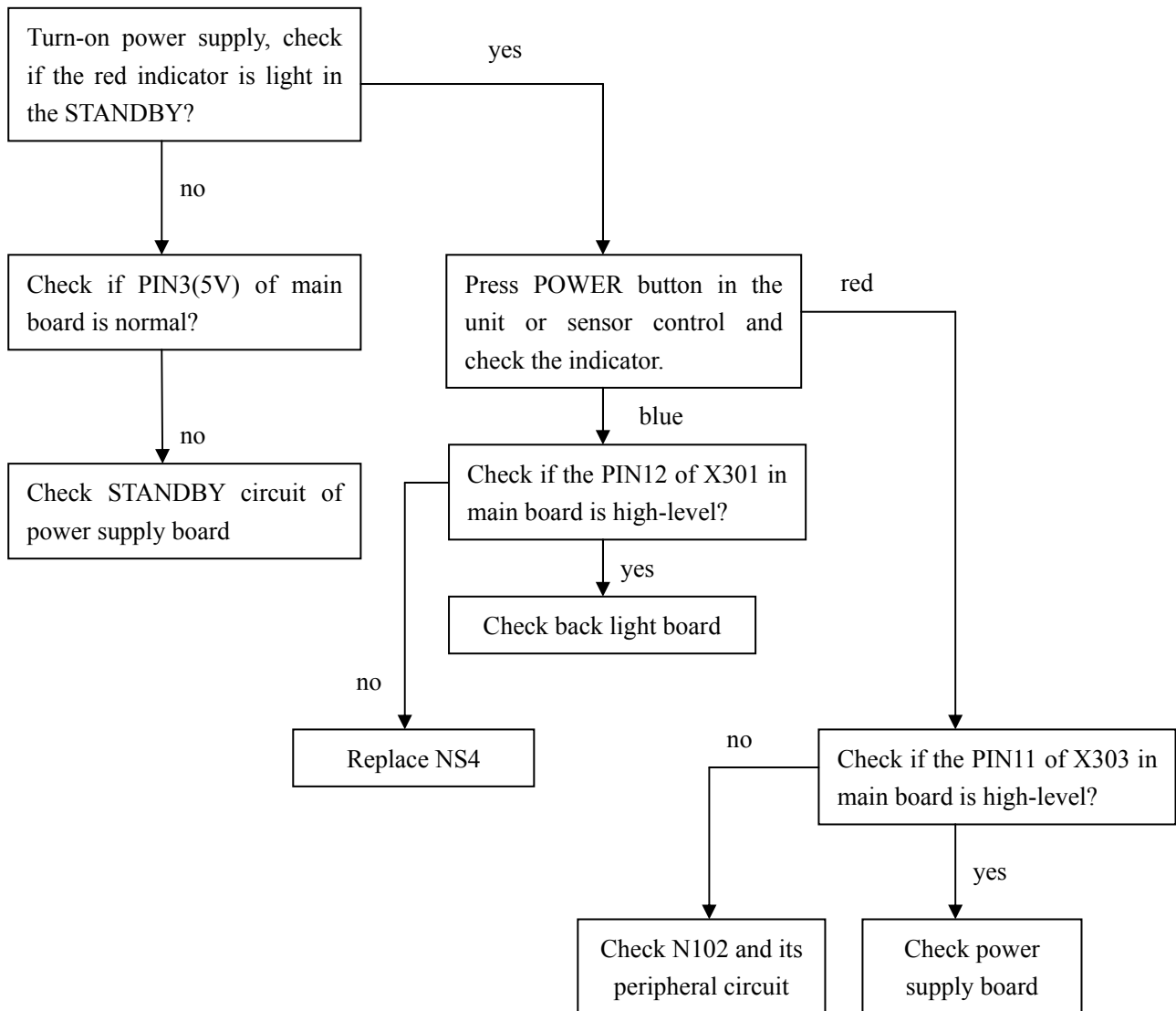
1.2 TV set:

Symptoms	Possible cause
Unable to switch the power on	<ul style="list-style-type: none">● Check to see if the power plug has been inserted properly into the socket.
No picture and sound	<ul style="list-style-type: none">● Check to see if the power supply of liquid crystal TV has been switched on. (As can be indicated by the red LED at the front of the TV set)● See if it's receiving the signal that is transmitted from other source than the station● Check if it's connected to the wrong terminal or if the input mode is correct.● Check if the signal cable connection between video frequency source and the liquid crystal TV set is correct.
Deterioration of color phase or color tone	<ul style="list-style-type: none">● Check if all the picture setups have been corrected.
Screen position or size is not proper	<ul style="list-style-type: none">● Check is the screen position and size is correctly set up.
Picture is twisted and deformed	<ul style="list-style-type: none">● Check to see if the picture-frame ratio is properly set up.
Picture color changed or colorless	<ul style="list-style-type: none">● Check the "Component" or "RGB" settings of the liquid crystal TV set and make proper adjustment according to the

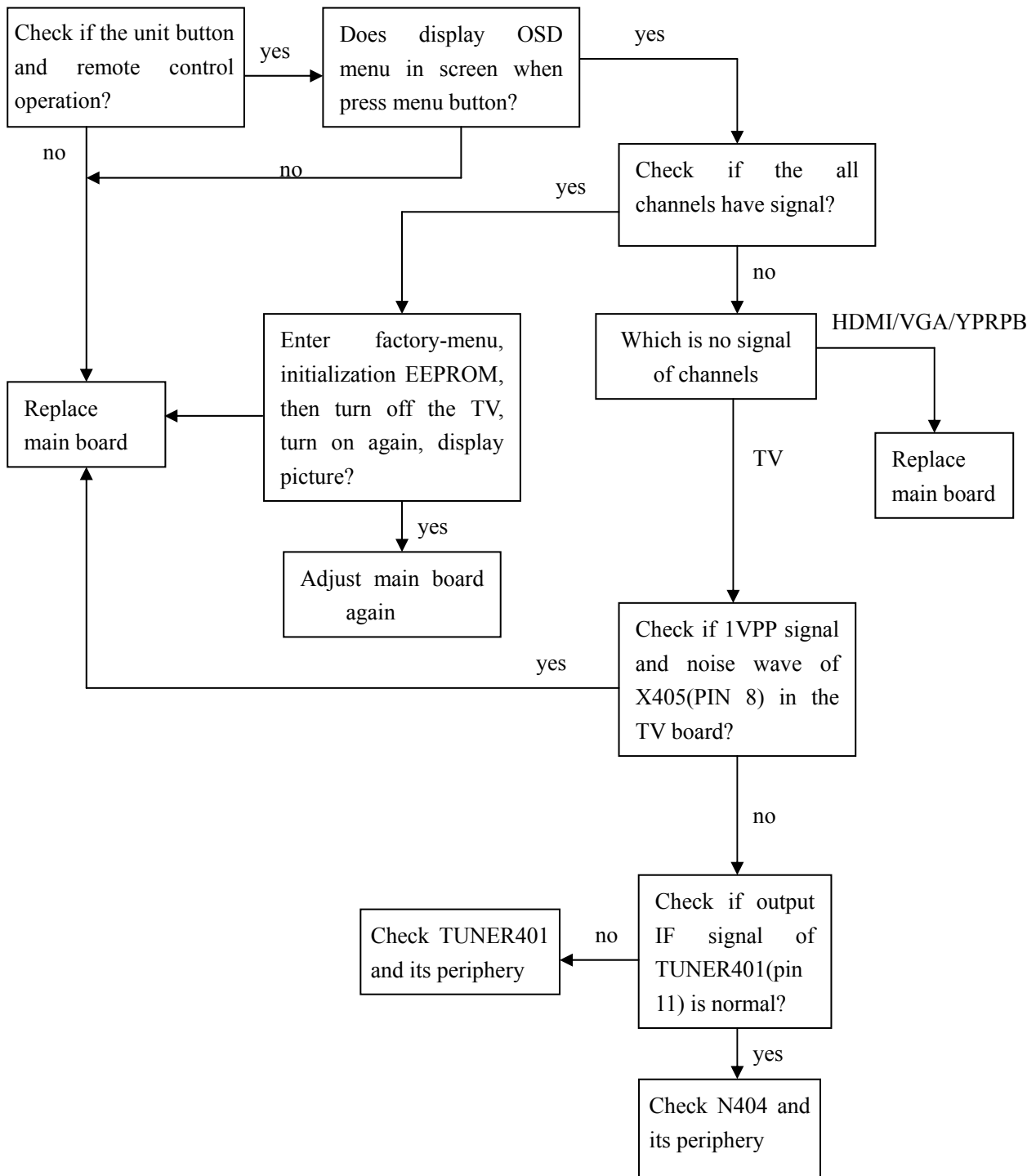
	signal types.
Picture too bright and there is distortion in the brightest area	<ul style="list-style-type: none"> ● Check if the contrast setting is too high. ● Possibly the output quality of DVD broadcaster is set too high. ● It maybe also due to improper terminal connection of the video frequency signal in a certain position of the system.
Picture is whitish or too bright in the darkest area of the picture	<ul style="list-style-type: none"> ● Check if the setting for the brightness is too high ● Possibly the brightness grade of DVD player (broadcaster) is set too high.
No picture or signal produced from the displayer if “XXX in search” appears.	<ul style="list-style-type: none"> ● Check if the cable is disconnected. ● Check if it's connected to the proper terminal or if the input mode is correct.
There appears an indication - “outside the receivable scope)	<ul style="list-style-type: none"> ● Check if the TV set can receive input signal. The signal is not correctly identified and VGA format is beyond the specified scope.
Remote control cannot work properly	<ul style="list-style-type: none"> ● Check if the batteries are installed in the reverse order. ● Check if the battery is effective. ● Check the distance or angle from the monitor. ● Check if there is any obstruct between the remote control and the TV set. ● Check if the remote control signal- receiving window is exposed to strong fluorescence.
No picture and sound, but only hash.	<ul style="list-style-type: none"> ● Check if the antenna cable is correctly connected, or if it has received the video signal correctly.
Blur picture	<ul style="list-style-type: none"> ● Check if the antenna cable is correctly connected. ● Of if it has received the right video signal.
No sound	<ul style="list-style-type: none"> ● Check if the “mute” audio frequency setting is selected. ● Check if the sound volume is set to minimum. ● Make sure the earphone is not connected. ● Check if the cable connection is loose.
When playing VHS picture search tape, there are lines at the top or bottom of the picture.	<ul style="list-style-type: none"> ● When being played or in pause VHS picture search tape sometimes can't provide stable picture, which may lead to incorrect display of the liquid crystal TV, In this case please press “auto” key on the remote control so as to enable the liquid crystal TV set to recheck the signal and then to display correct picture signal

2. Troubleshooting guide

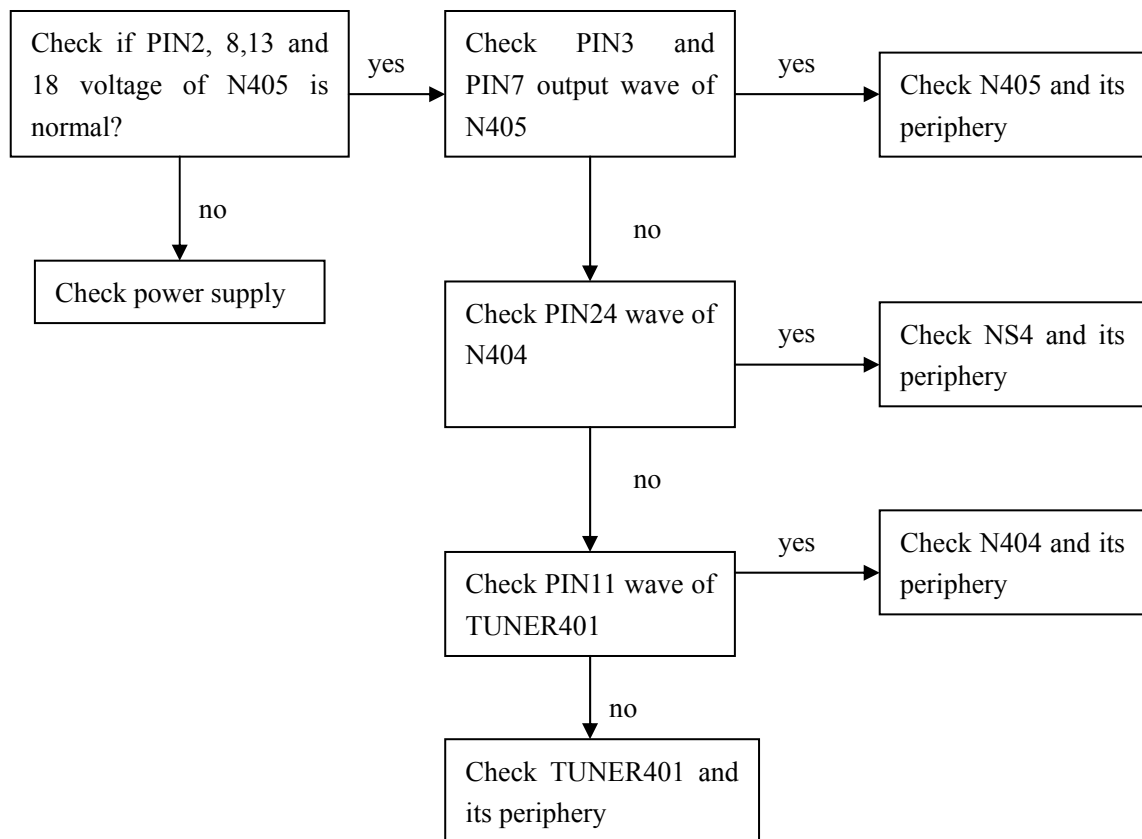
2.1. No raster

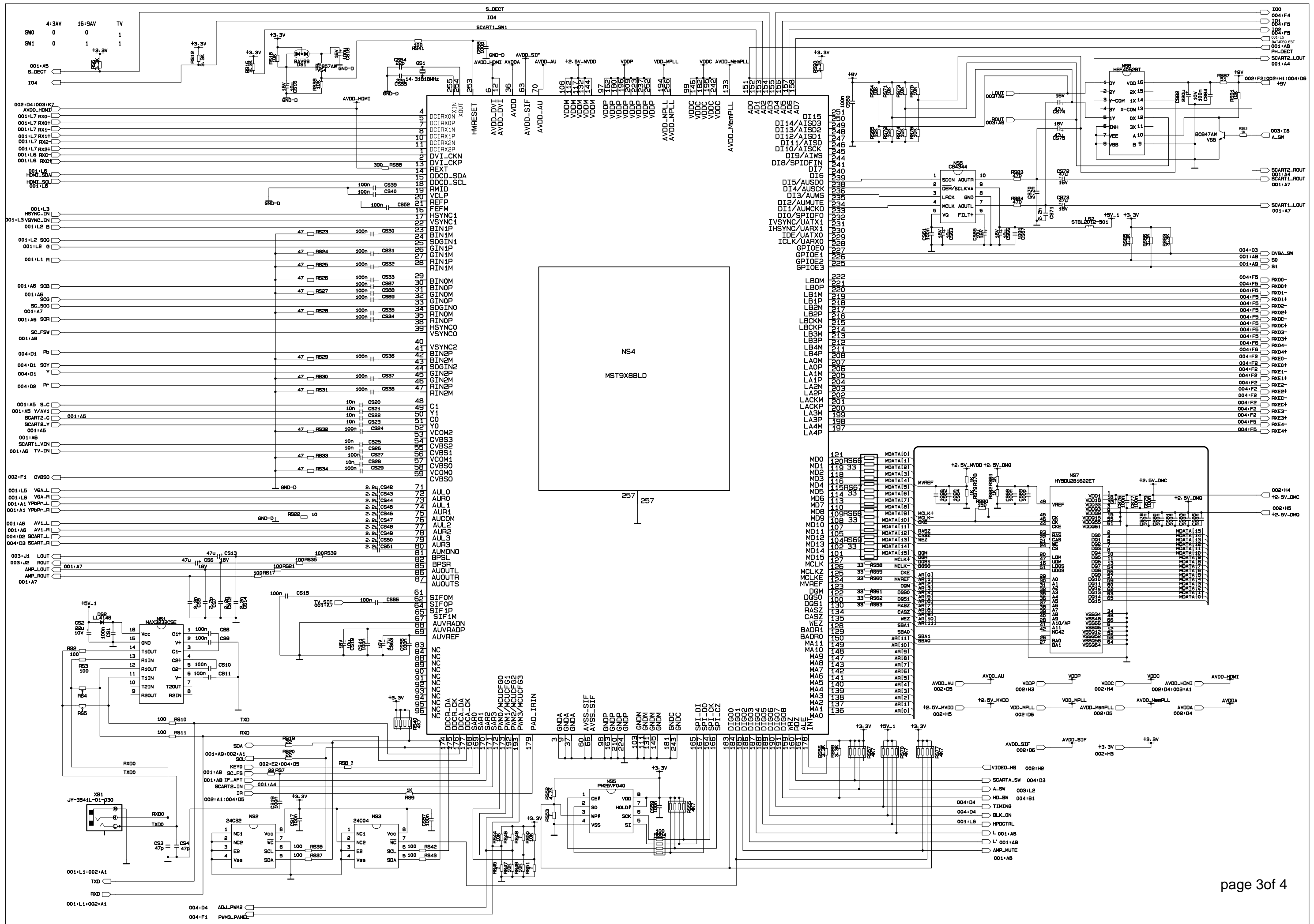


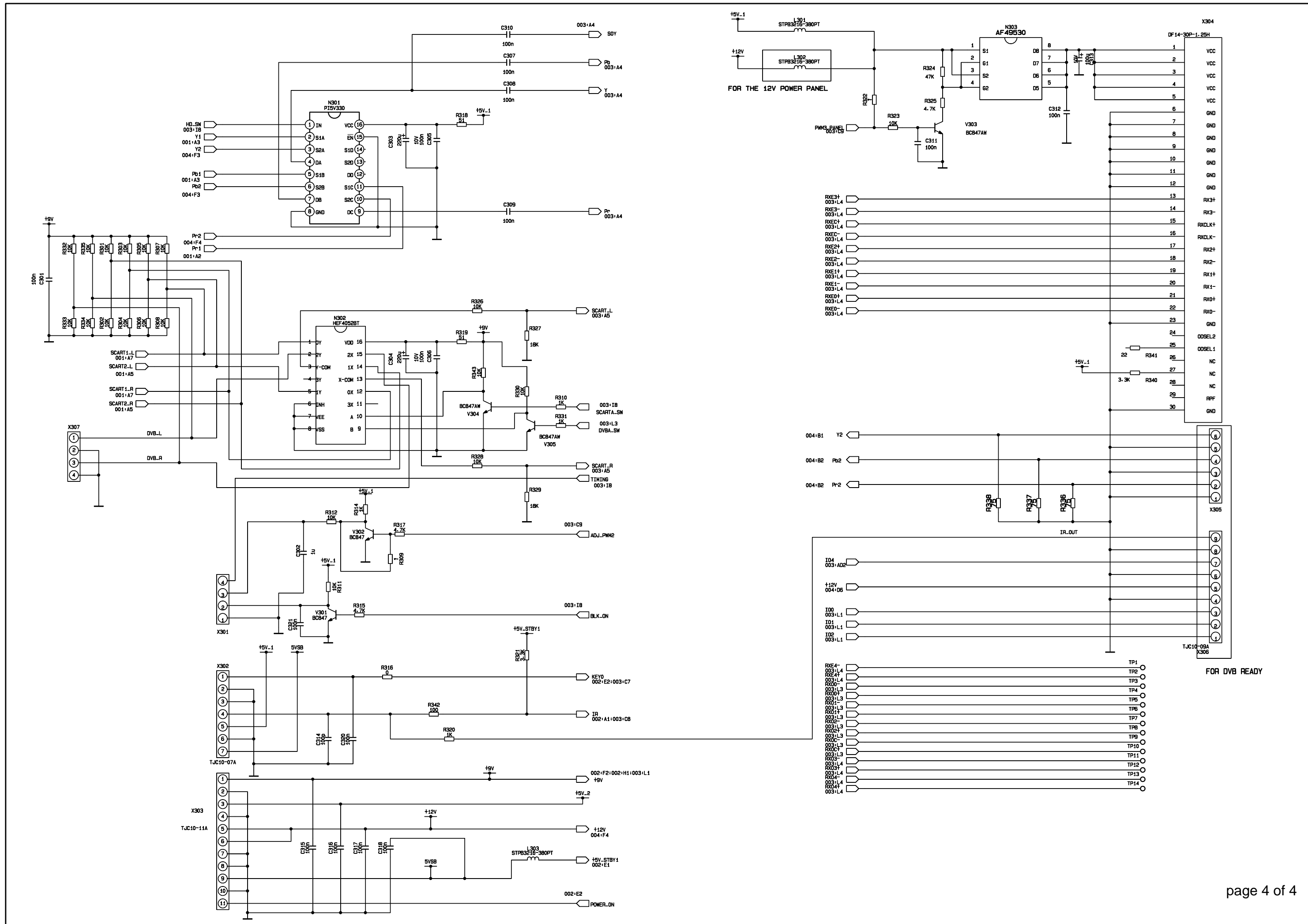
2.2. Raster, but no picture

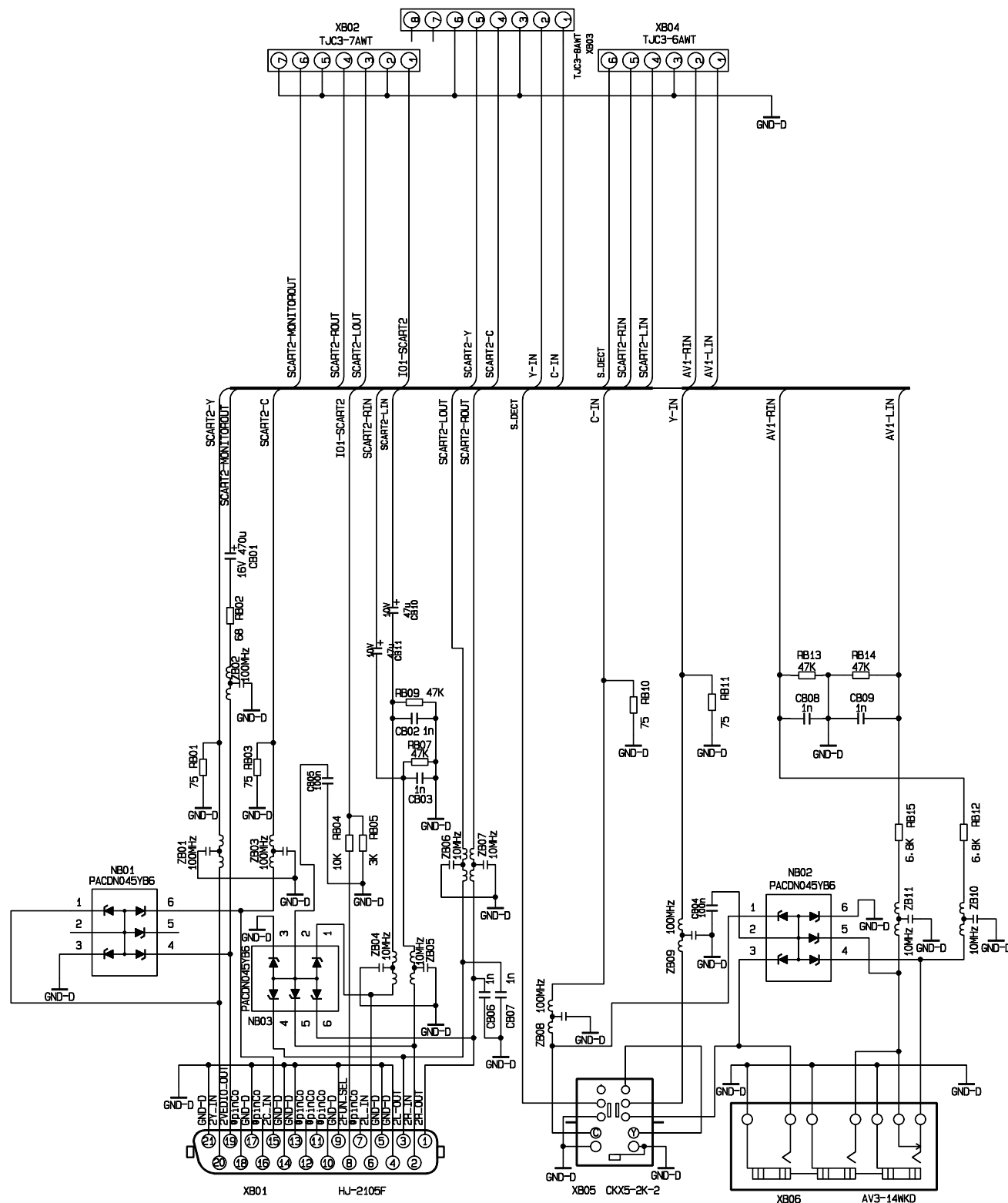


2.3.no sound









interface connector

A

B

C

D

E

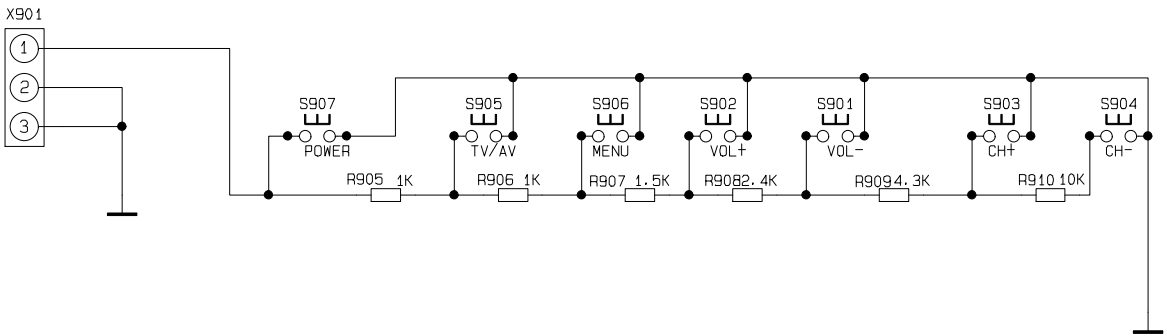
F

1

2

3

4



KEY board

A

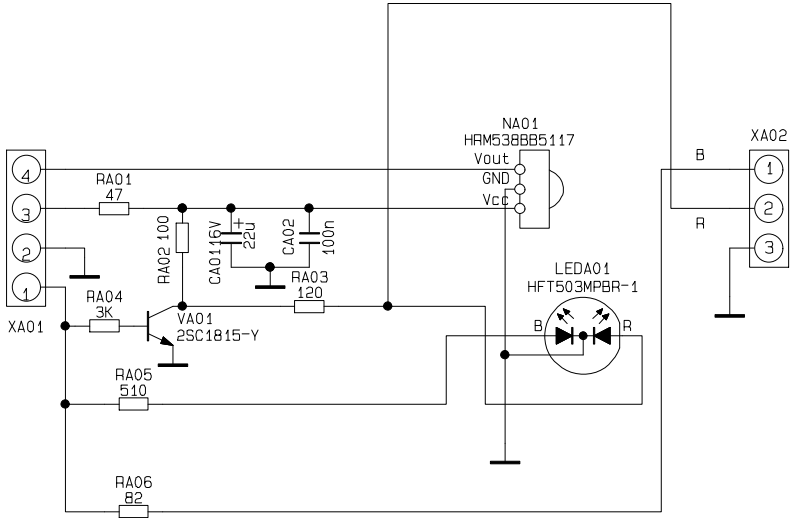
B

C

D

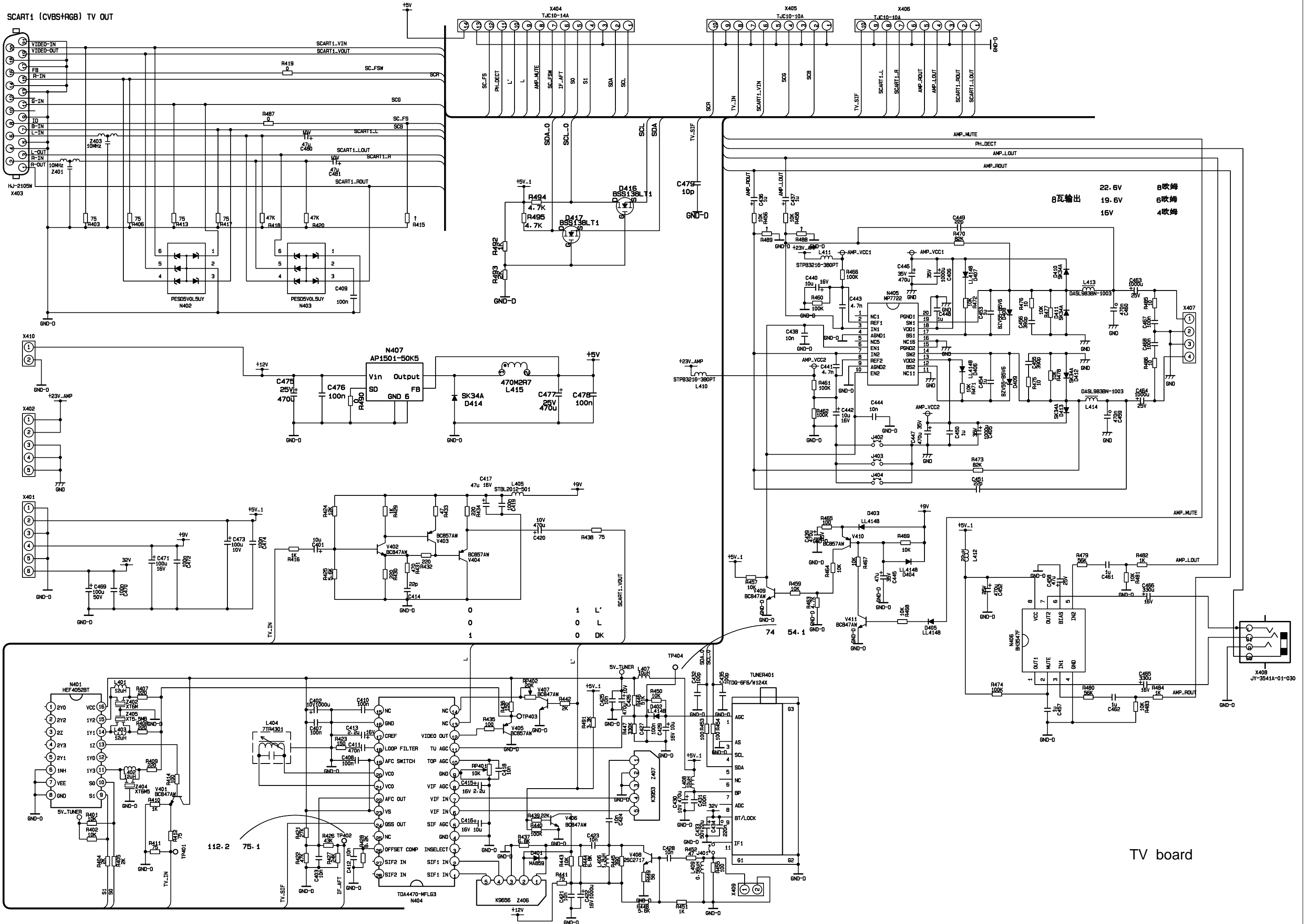
E

F



IR receiver board

SCART1 (CVBS+RGB) TV OUT



TV board

1

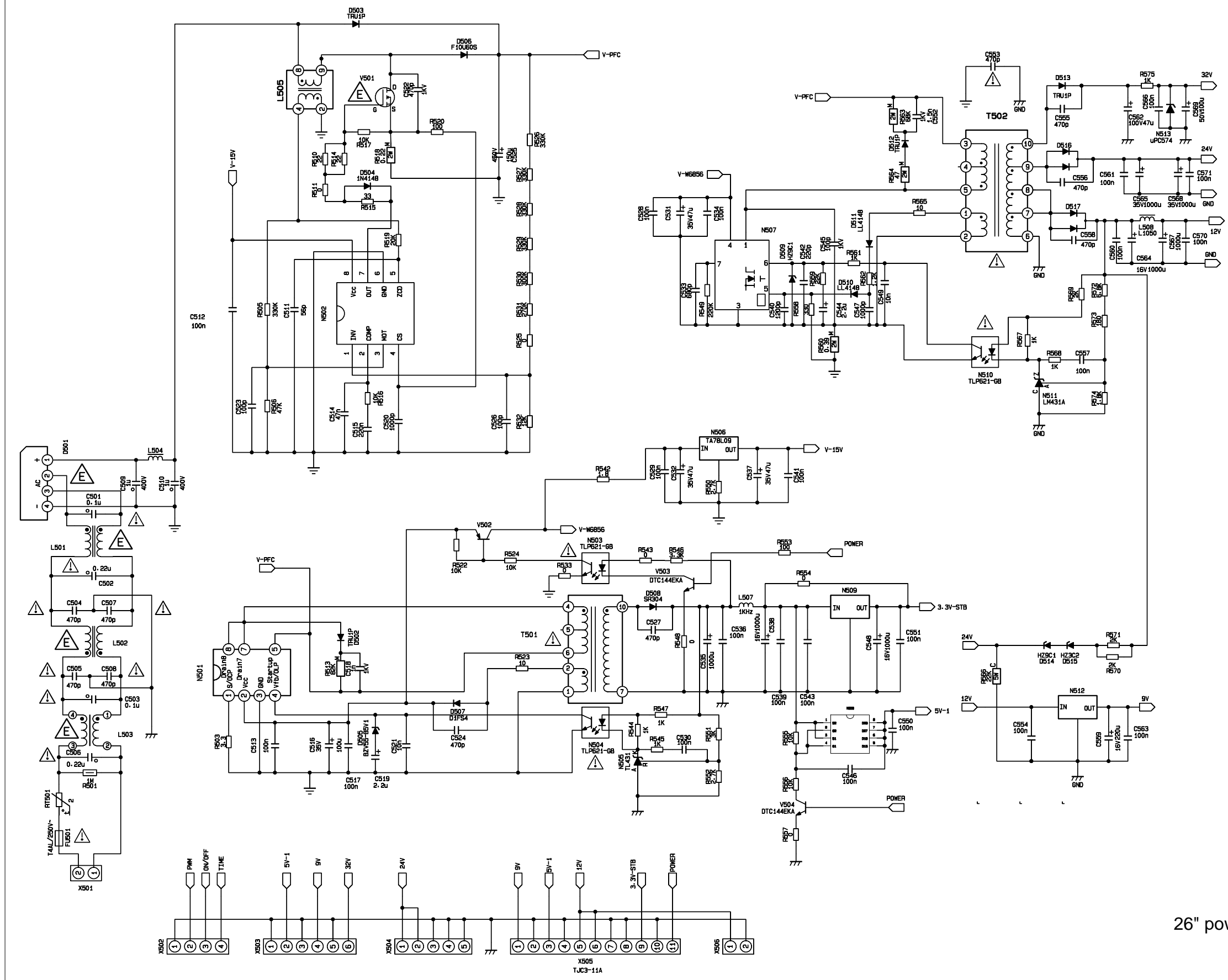
2

3

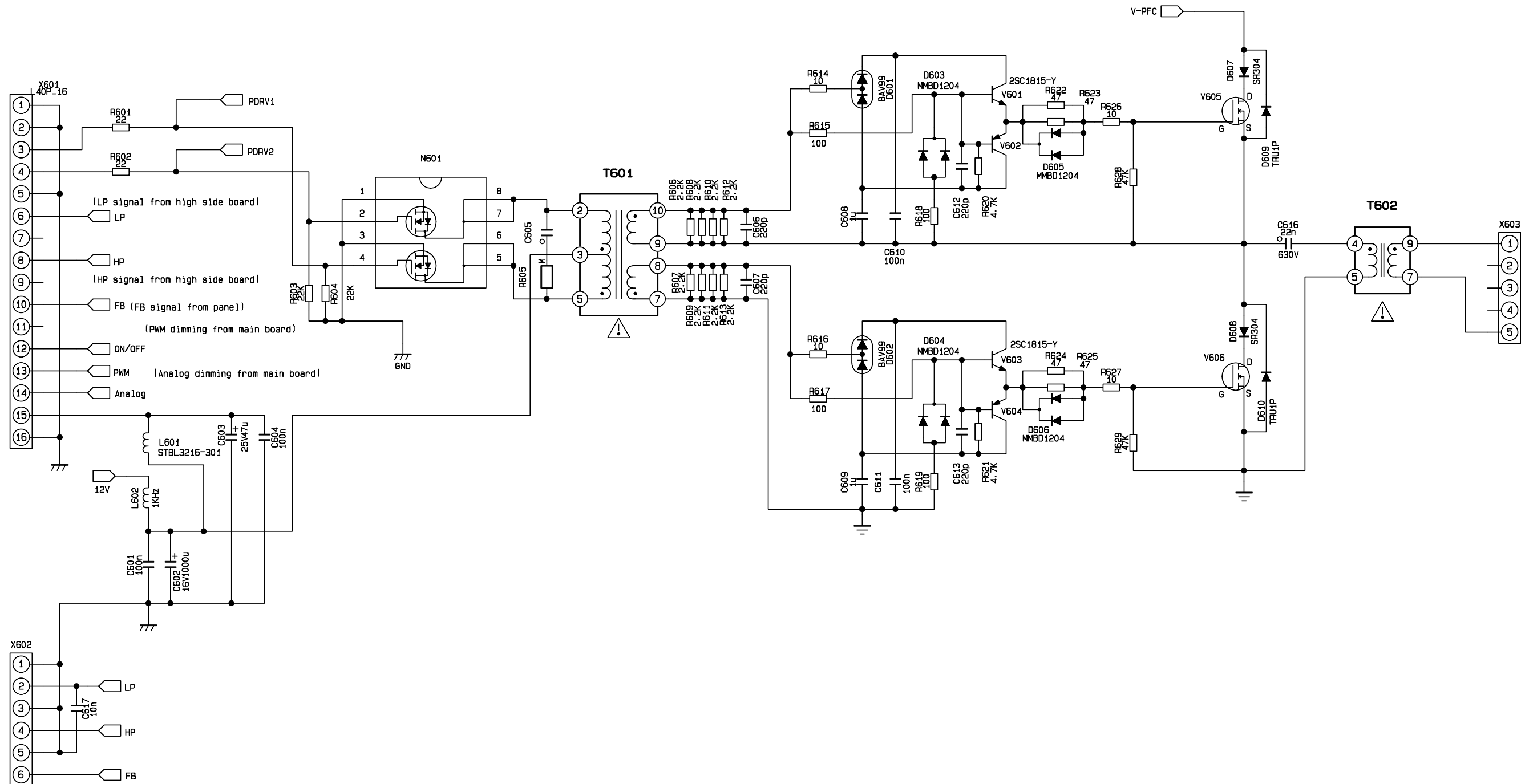
4

5

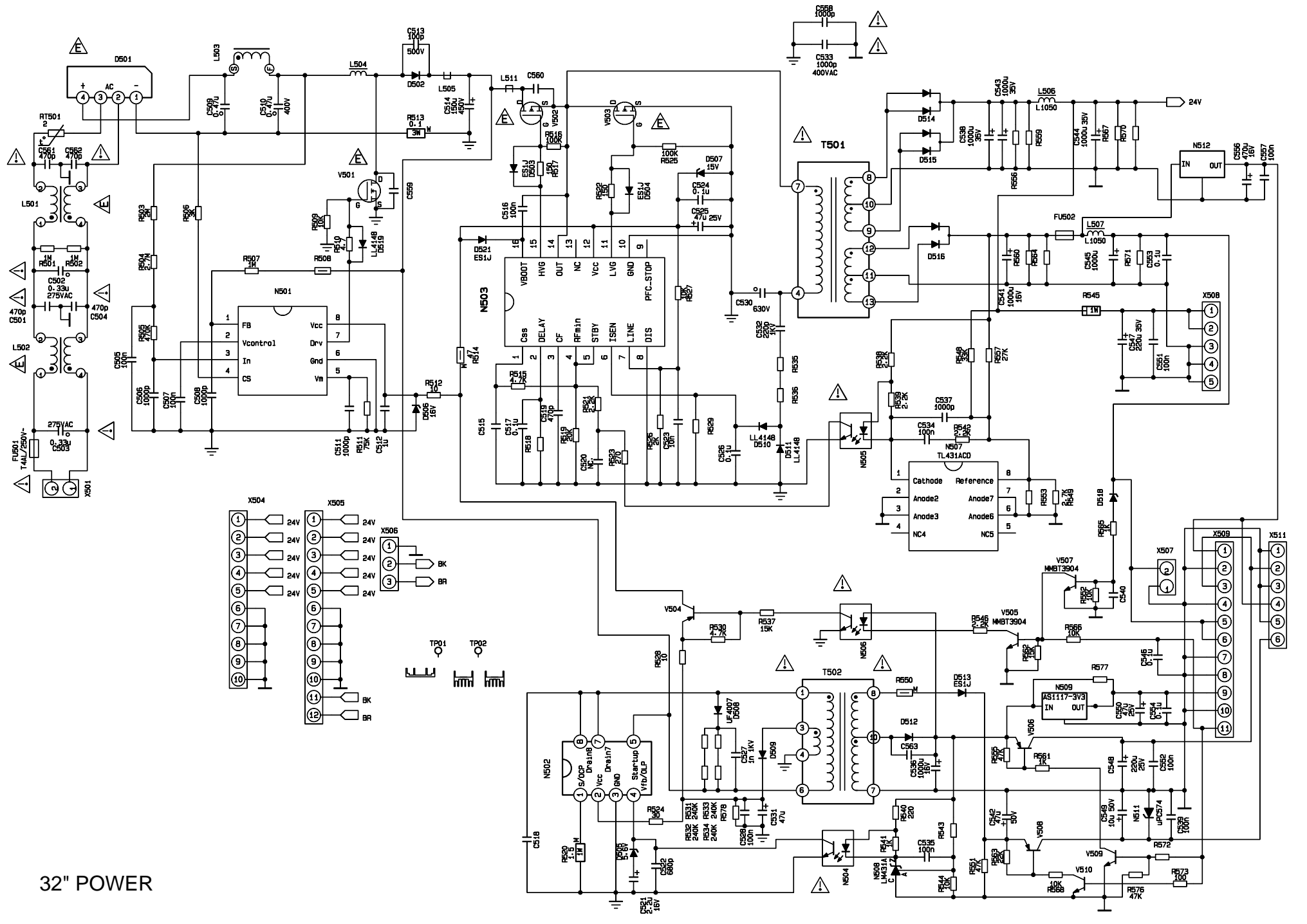
6



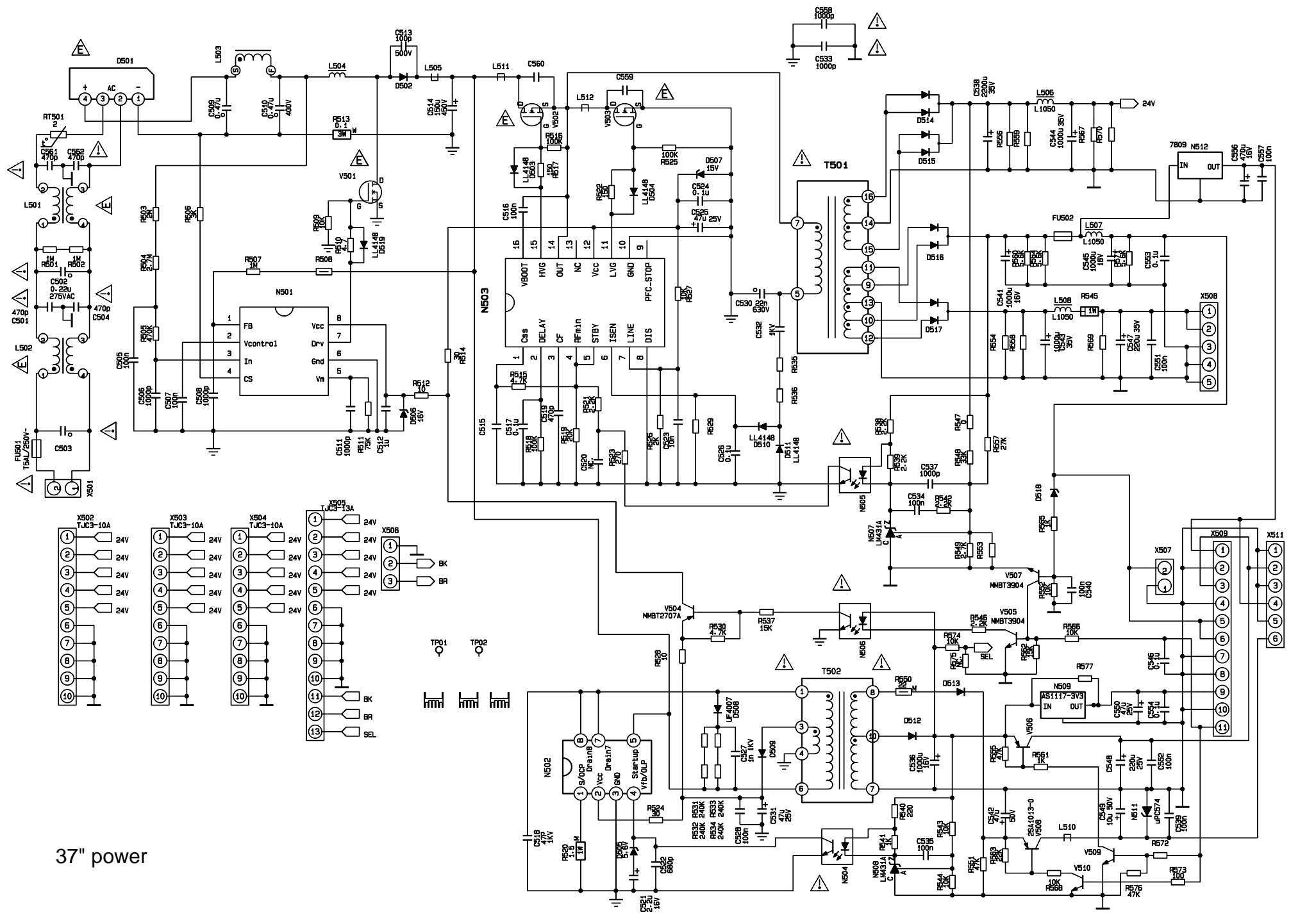
26" power 1



26" power 2

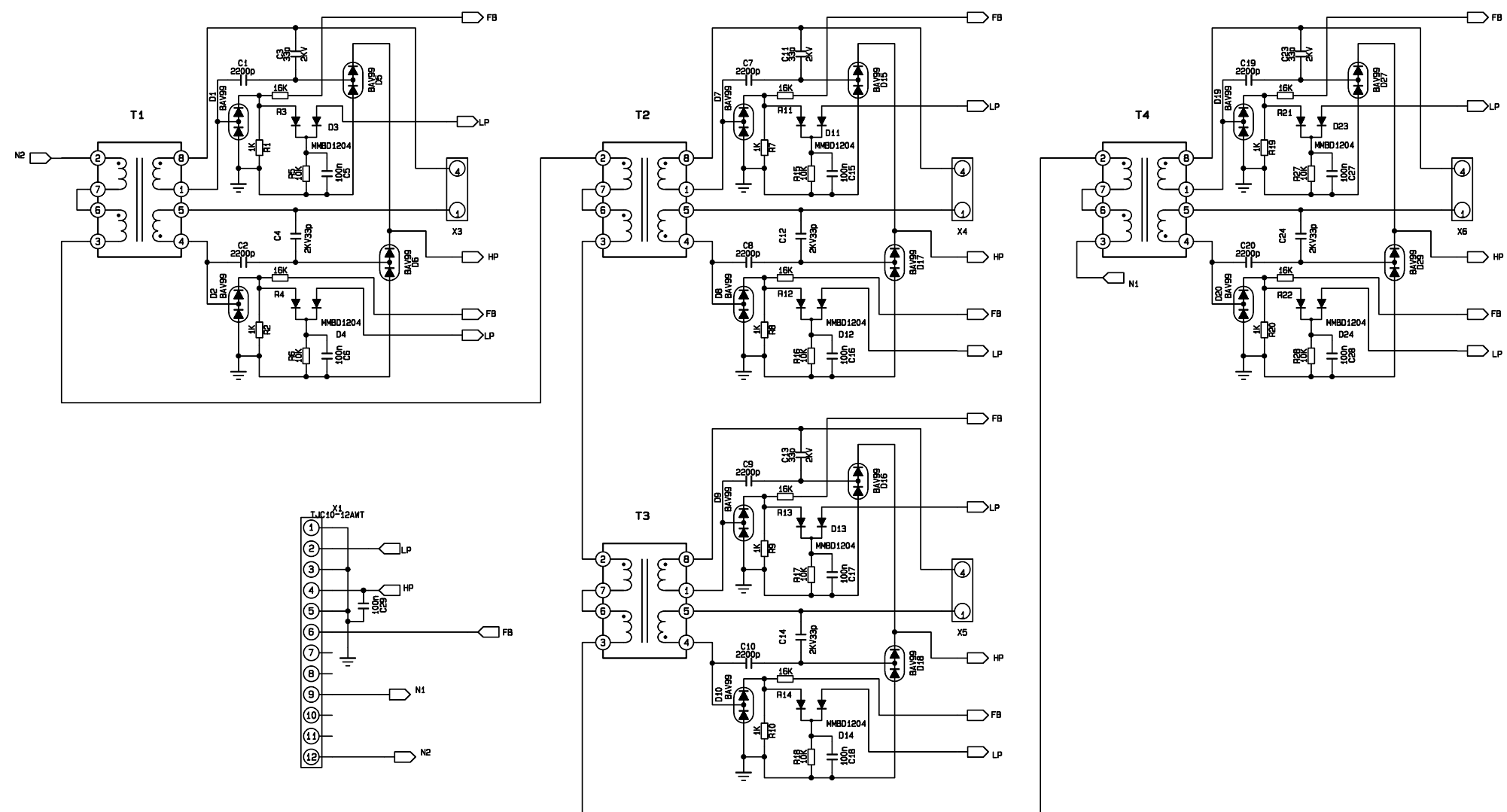


32" POWER

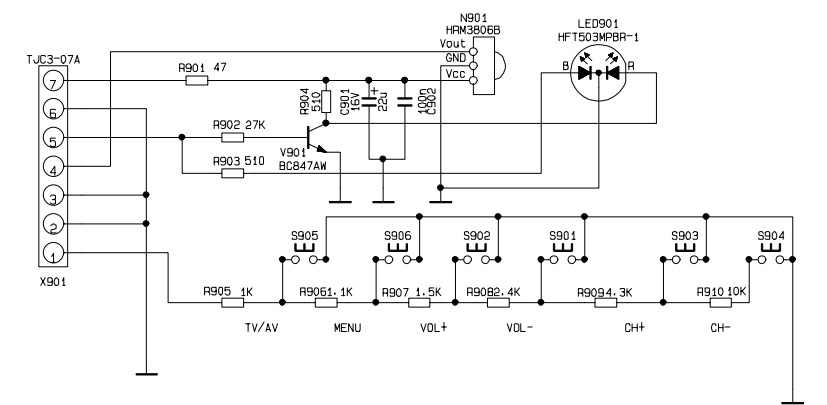
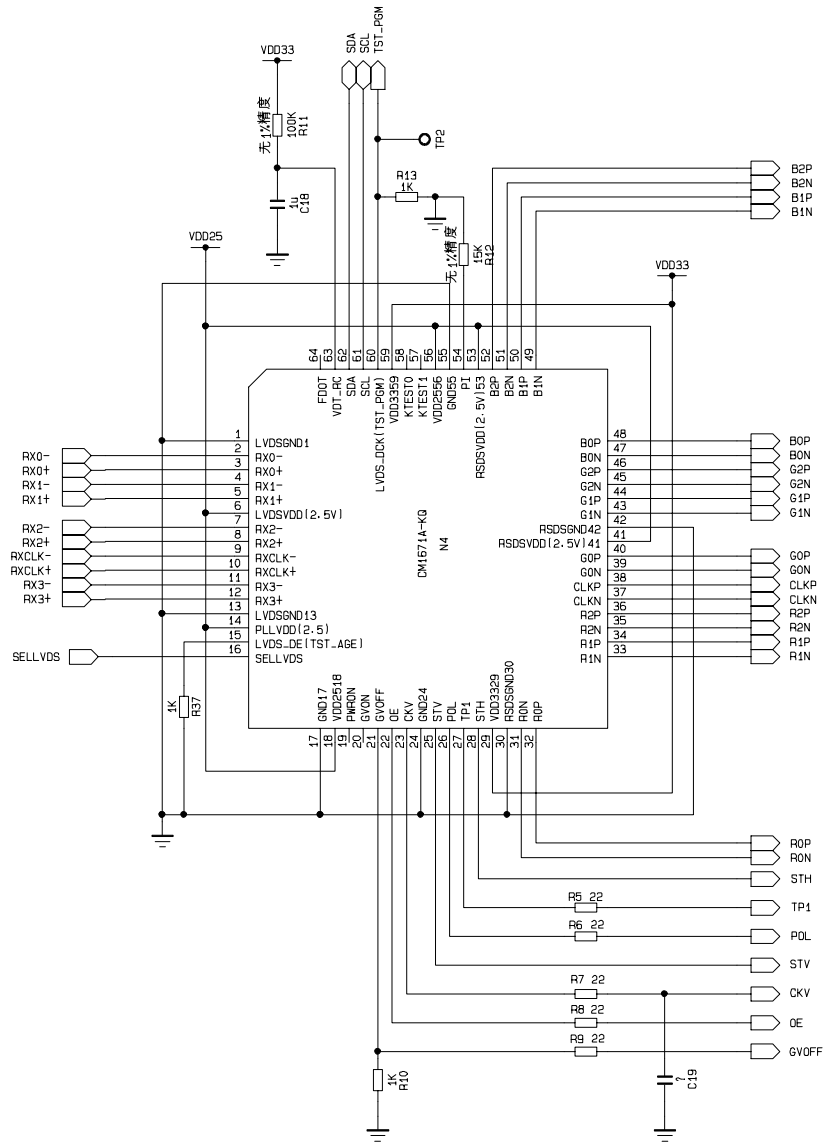
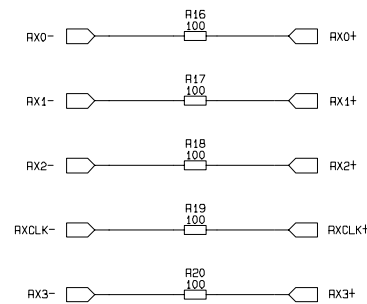
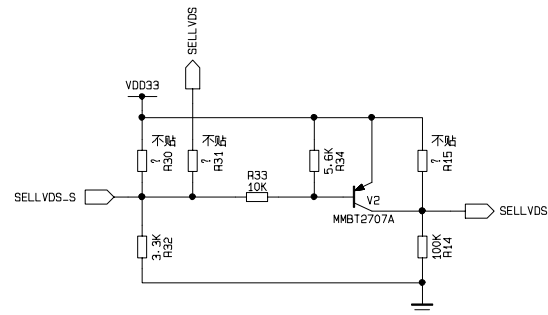
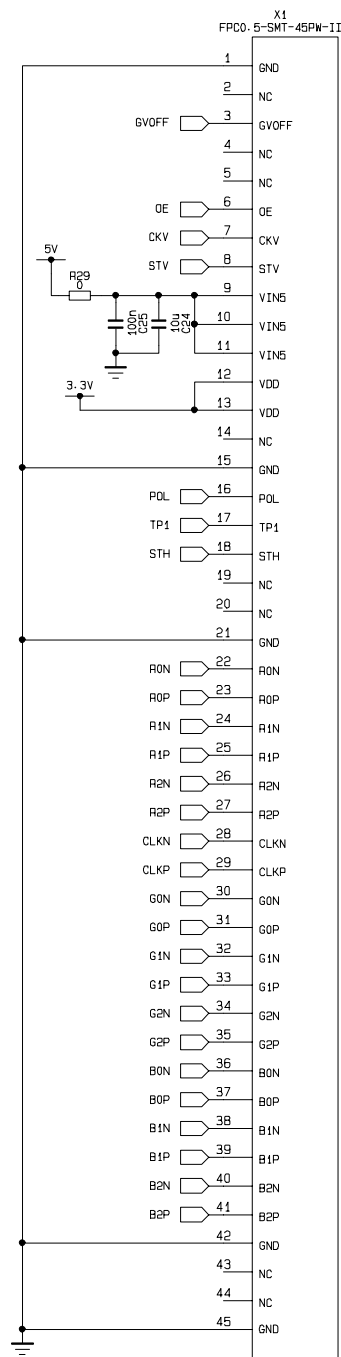


37" power

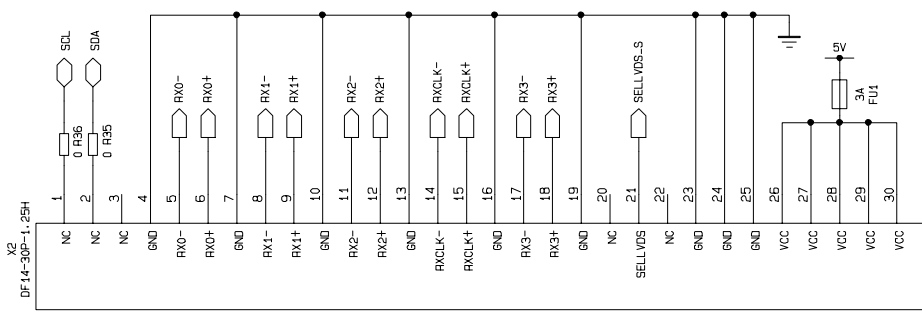
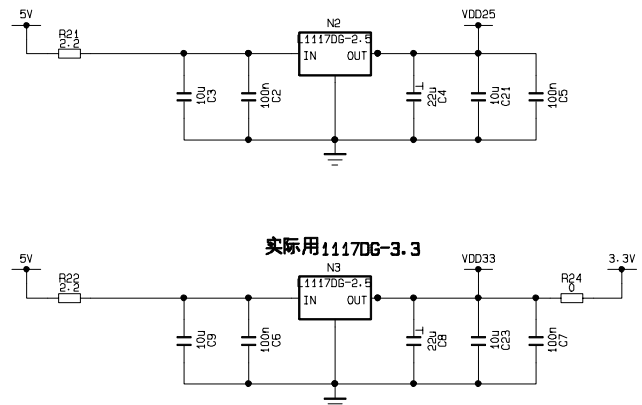
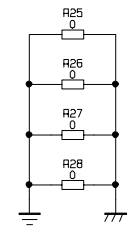
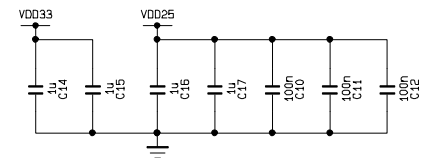
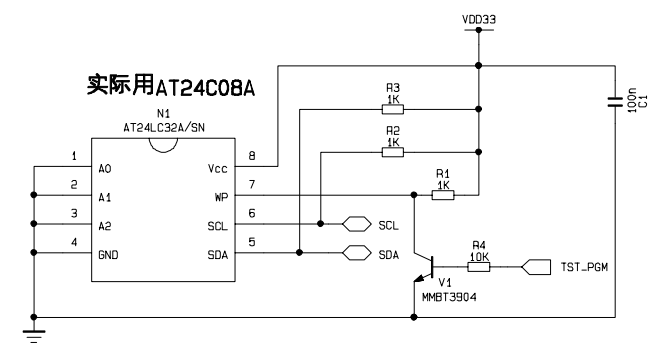
1
2
3
4
5
6

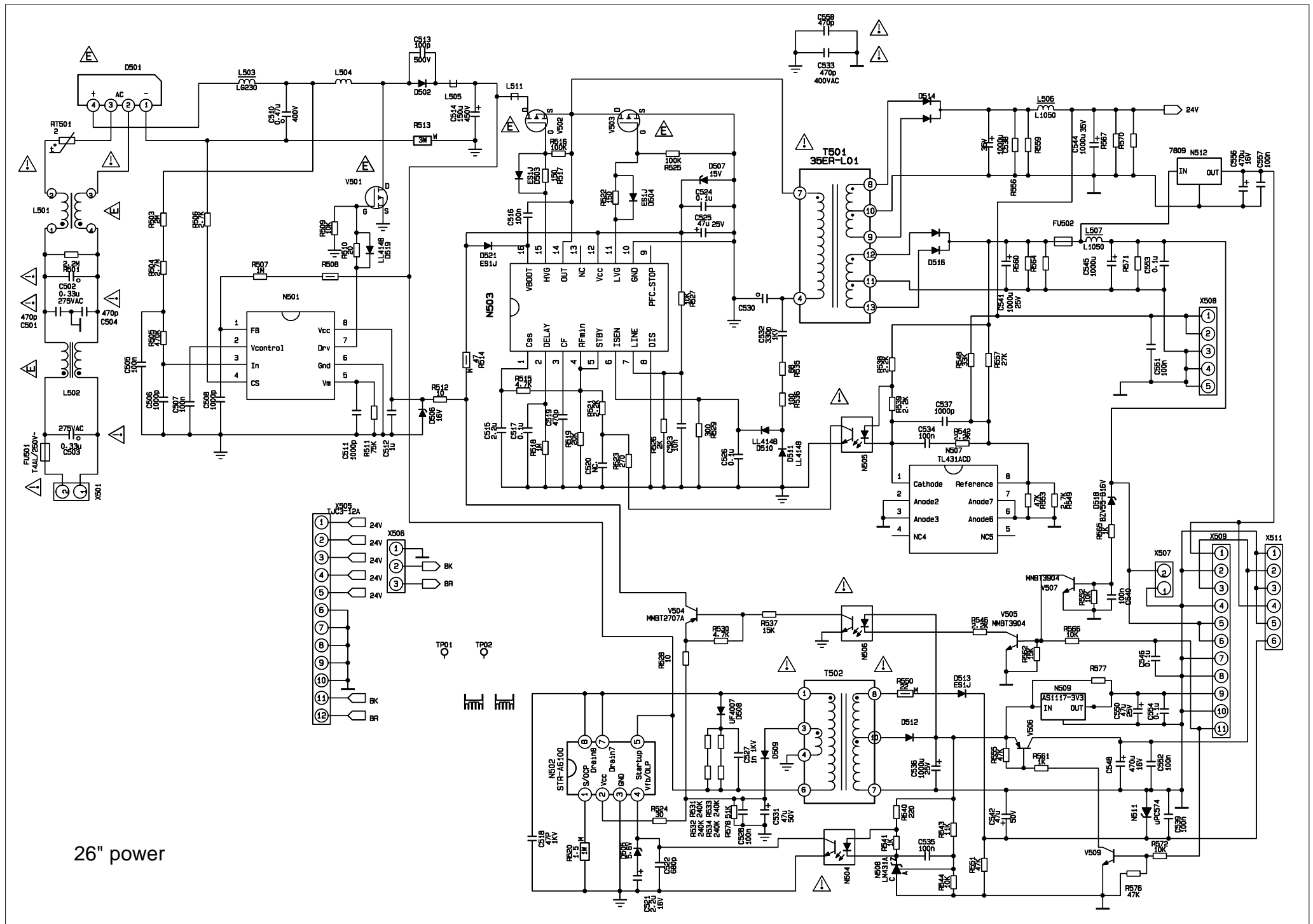


26" backlight



IR&KEY





APPENDIX-A: Main assembly
9226HU2623

NAME	NO.	MAIN COMPONENT AND IT'S NO.	
Analog board	6HU0495310	N404 N405	TDA4470MFL (5274470001) MP7722DF (5277722001)
Main board	6HU0700150	NS4	MST9E88L (5270988002)
IR board	6LW01309A0		
Interface board	6HU0112910		
Key board	6HU0220510		
T-CON board	6HU0122610		
Backlight board	6HU0121410		
Power board	6HU0122010		
Remote control	6010Y03509	RC-Y35-0H	
Panel	5203265502	V260B1-L02	

9226HU2624

NAME	NO.	MAIN COMPONENT AND IT'S NO.	
Analog board	6HU0495310	N404 N405	TDA4470MFL (5274470001) MP7722DF (5277722001)
Main board	6HU07001S0	NS4	MST9E88L (5270988002)
IR board	6LW01309A0		
Interface board	6HU0112910		
Key board	6HU0220510		
Power board	6HU0162010		
Remote control	6010Y03509	RC-Y35-0H	
Panel	5203265501	V260B1-L01	

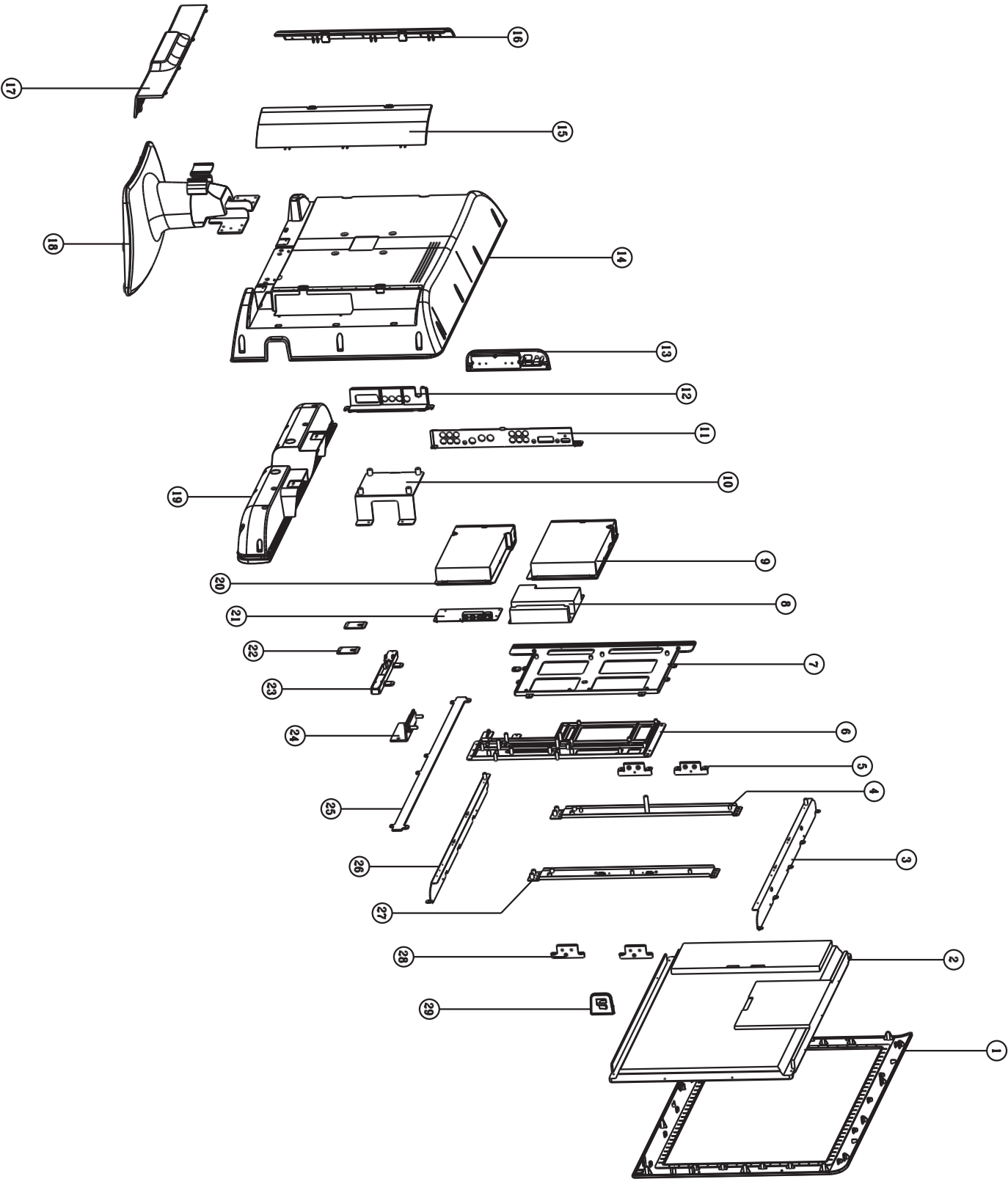
9232HU2623

NAME	NO.	MAIN COMPONENT AND IT'S NO.	
Analog board	6HU0495310	N404 N405	TDA4470MFL (5274470001) MP7722DF (5277722001)
Main board	6HU04901S0	NS4	MST9E88L (5270988002)
IR board	6LW01309A0		
Interface board	6HU0212910		
Key board	6HU0220510		
Power board	6HU0212010		
Remote control	6010Y03509	RC-Y35-0H	
Panel	5203325903	LK315T3LZ54	

9237HU2613

NAME	NO.	MAIN COMPONENT AND IT'S NO.	
Analog board	6HU0495310	N404 N405	TDA4470MFL (5274470001) MP7722DF (5277722001)
Main board	6HU07501S0	NS4	MST9E88L (5270988002)
IR board	6LW01309A0		
Interface board	6HU0212910		
Key board	6HU0220510		
Power board	6HU0282010		
Remote control	6010Y03509	RC-Y35-0H	
Panel	5203375204	CLAA370WF02S	

APPENDIX: Exploded view (LC-27X26)

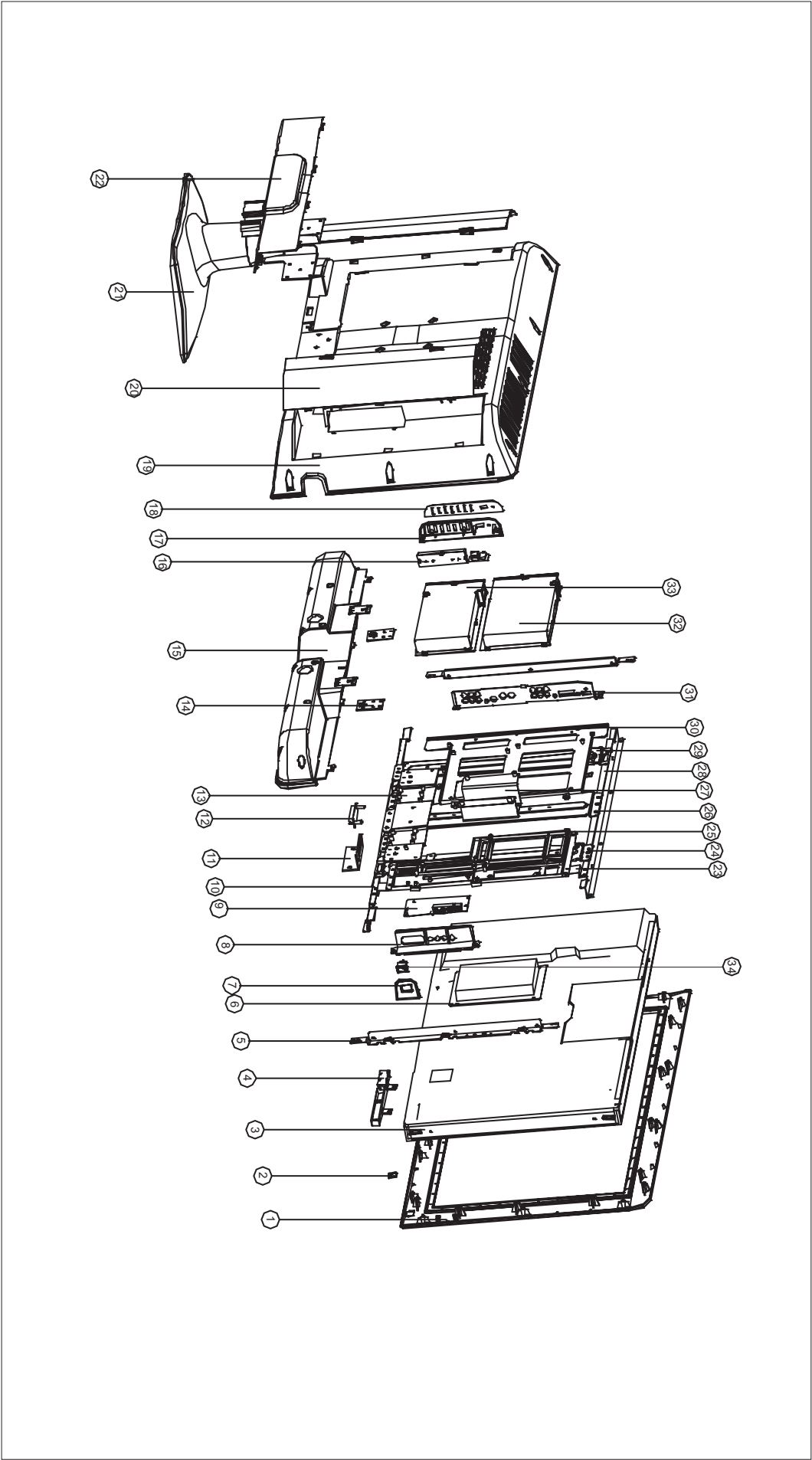


PART LIST OF EXPLODED VIEW (LC-27X26)

NO.	PART NO.	DESCRIPTION
1	5QX26W009D	Front cabinet
2		Screen
3	58A0039100	LCD screen frame (top)
4	58A003930A	LCD screen frame upright1
5	58A0039500	LCD screen connection bracket1
6	574018901B	Power board frame
7	5740188010	Main board frame
8		Power board assy
9		CPU board assy
10	58A0039700	Wall mount connection piece
11	5830D9681B	AV baffle (left)
12	5830D96910	AV baffle (right)
13		Key board assy
14	5HX26WH01C	Back cabinet
15	5830098110	Back cabinet cover (right)
16	5830098010	Back cabinet cover (left)
17	5830098210	Rotor cover
18	6151067520	Stand assy
19	6170575000	Speaker assy
20		Analog board assy
21		trans-connect board assy
22	5810046800	Connecting piece of speaker box
23		IR receice board
24	5830097010	AV baffle (bottom)
25		Active Decorative piece
26	58A0039200	LCD screen frame(bottom)
27	58A0039400	LCD screen frame upright2
28	58A0039600	LCD screen connection bracket2
29	58B0A24110	Main switch bracket

Note: Design and specification are subject to change without notice.

APPENDIX: Exploded view (LC-32X26)



PART LIST OF EXPLODED VIEW (LC-32X26)

NO.	PART NO.	DESCRIPTION
1	5QG26W0090	Front cover
2	6153042500	Trans-connecting bracket assy
3		Screen
4		reception board assy
5	58A0028800	Connecting bracket of screen(left right)
6		Power board assy
7	58B0A24110/ 58B0024110	Main switch bracket
8	5830E96910	AV baffle (right)
9		Trans-connecting board assy
10	58A0041700	crystal FRAME (bottom)
11	5830097010	AV baffle (bottom)
12	5284000031	Socket
13	58A0040900	Stand bracket
14	5810046800	Connecting piece of speaker box(2)
15	6170558000	Speaker box assy
16		button board assy
17	58B0023910	SIDE Button board bracket
18	5840947010	Buttonbaffle
19	5HG26WH01C	Rear cabinet
20	5830096610	Rear cabinetCover(1)
21	6151064900	Stand assy
22	5830096710	Rear cabinetCover(2)
23	58A0041100	trans-connector
24	58A0A40800	crystal frame (right)
25	574018901B	Power board frame
26	58A0040700	crystal frame (middle)
27	58A0041000	Mounting holder
28	58A0041600	crystal frame (upper)
29	58A0A40600	crystal frame (left)
30	Y740188010	Main board frame
31	5830F9681B	AV baffle (left)
32		CPU board assy
33		Analog board assy
34	5293000042	Power switch

Note: Design and specifications are subject to change without notice

