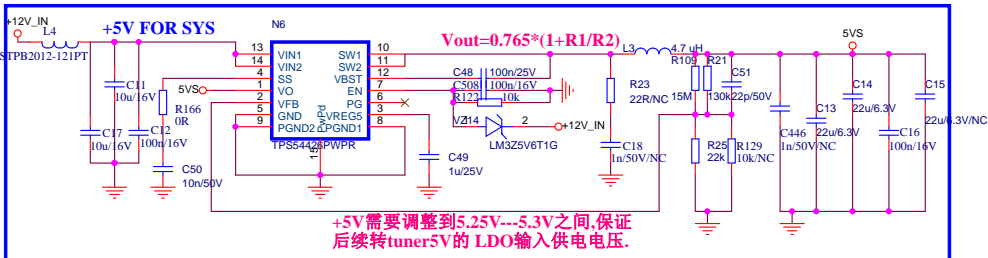
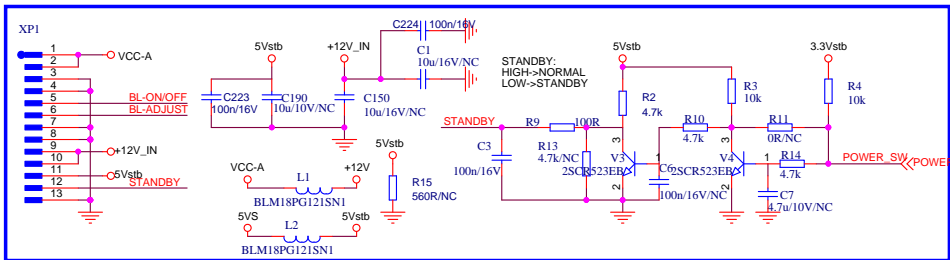
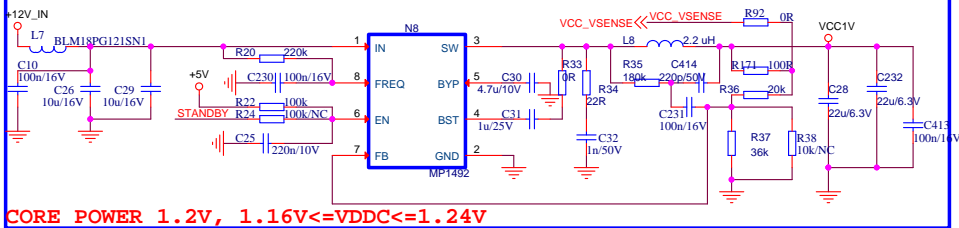


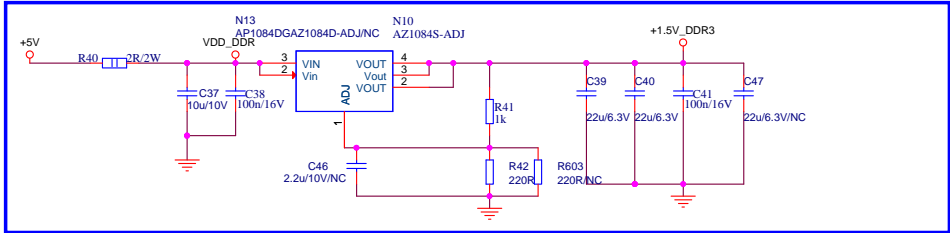
## Power Input



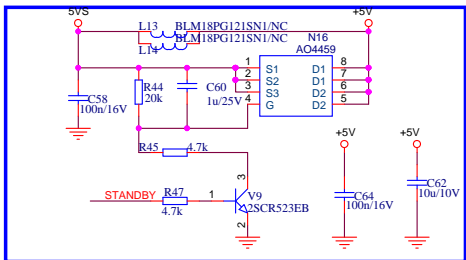
## 1.05V FOR 61982 CORE POWER



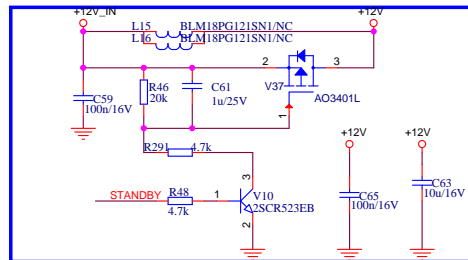
## 1.5V Power\_DDR3(1105681)



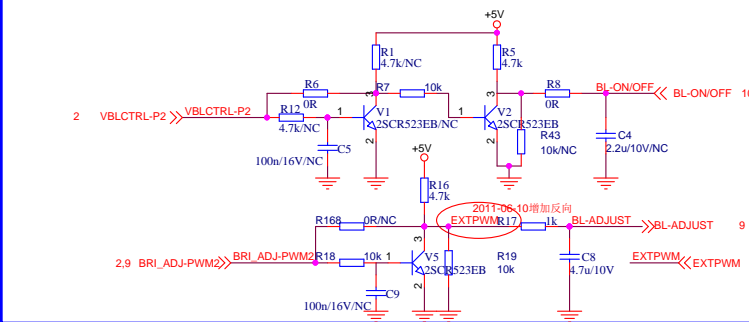
## +5V POWER



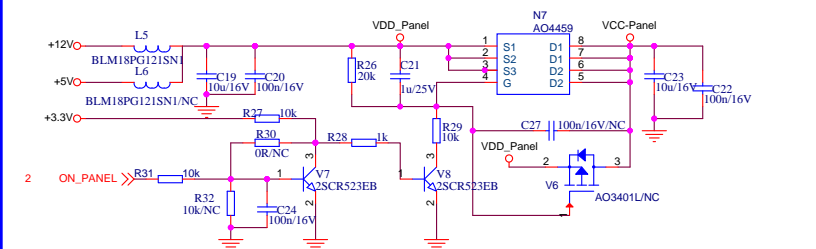
## +12V POWER



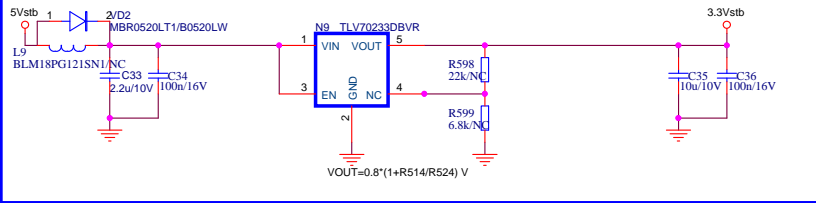
## TO Inverter Board



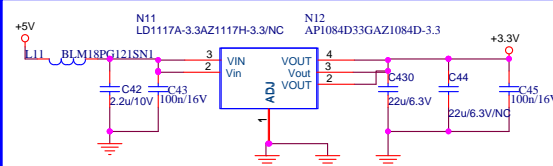
## Power for Panel



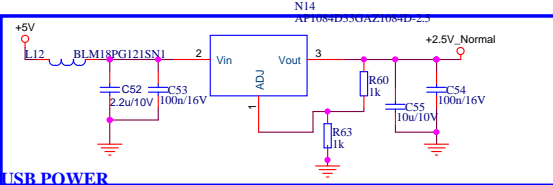
## 3.3V Power\_Standby only for AVDD\_MPLL and IR



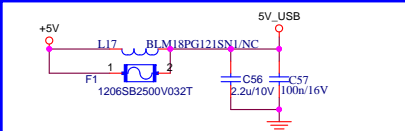
## 3.3V Power\_Normal



## 2.5V FOR 61982

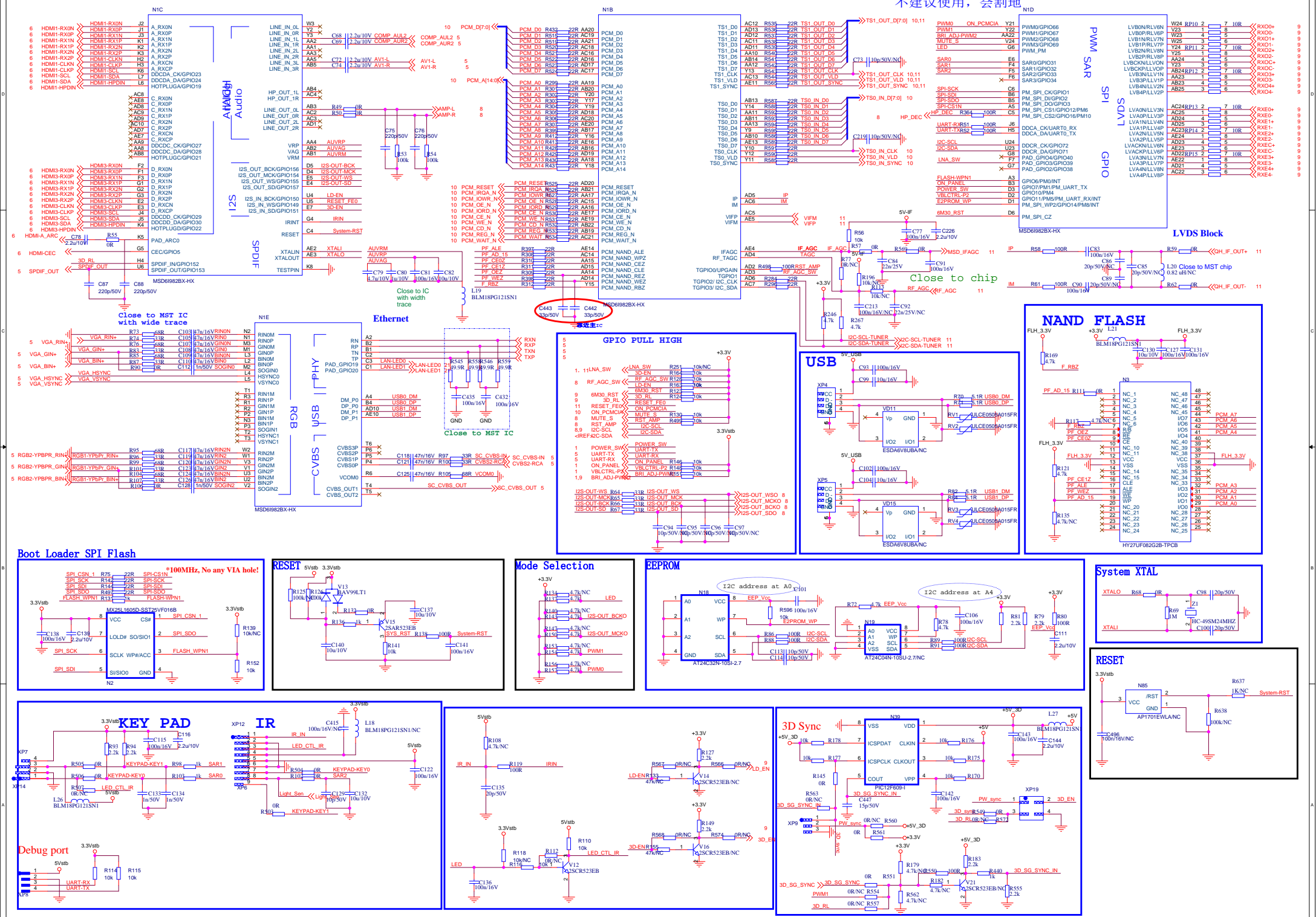


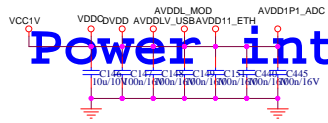
## USB POWER



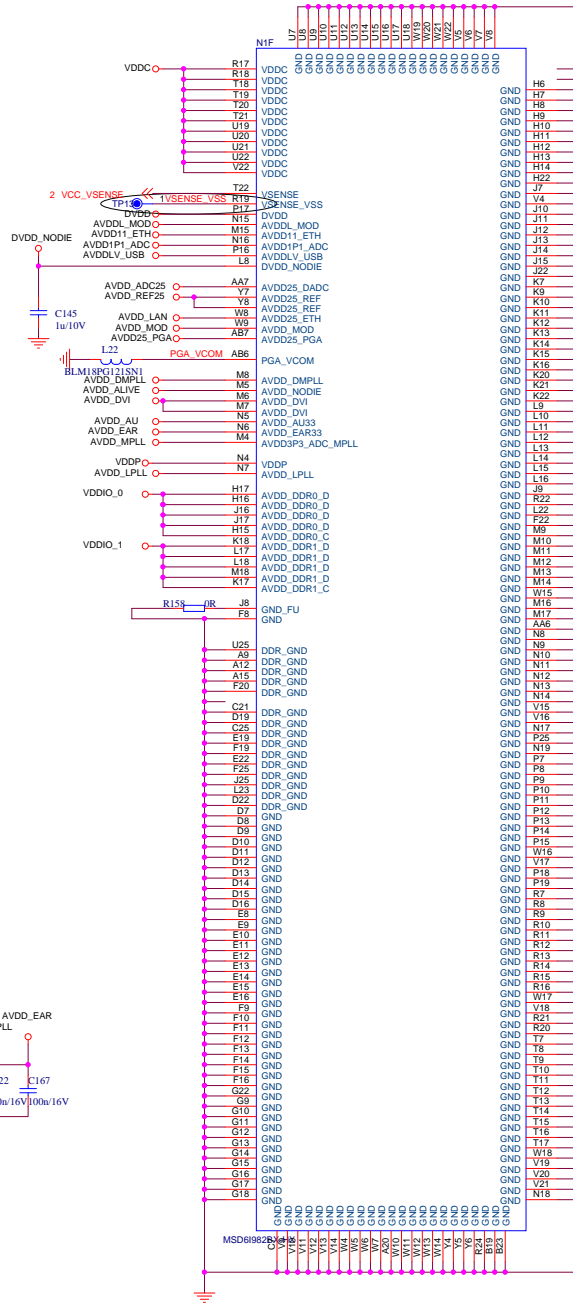
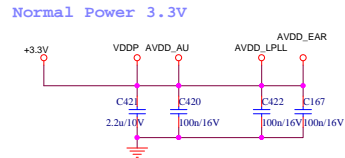
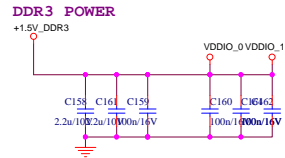
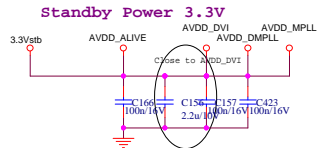
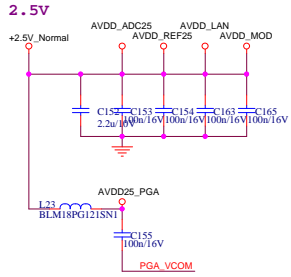
Title	MSD61982BTX		
Size	Document Number	Rev	1.0
Customer	System Power		
Date:	Wednesday, April 02, 2014	Sheet	1 of 11

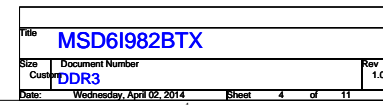
1.Ball G7, Ball G8, Ball F7, Ball D6,  
Ball E7 ONLY SOCKET BOARD HAVE,两层板  
不建议使用,会割地



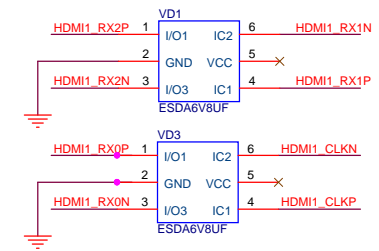
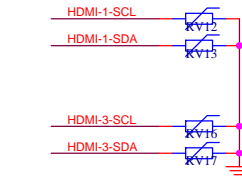
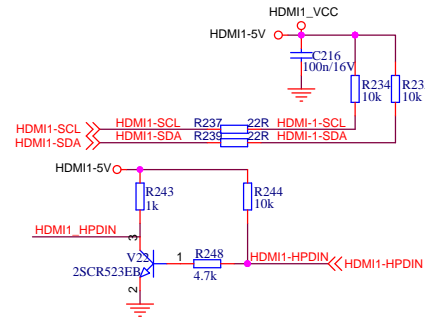


# Power interface







[illegible]

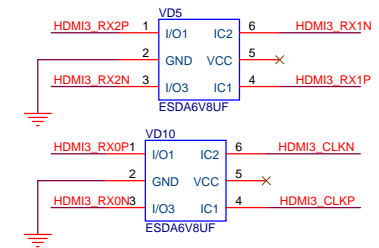
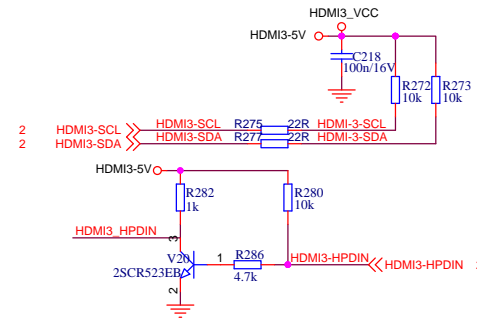
**X99**

Pin	Signal	Connector Pin	Signal
19	HDMI3_HPDIN	2	HDMI3-CLKN
18	HDMI3-5V	3	HDMI3-CLKP
17	HDMI3-5V	4	HDMI3-RX0N
16	HDMI3-SDA	5	HDMI3-RX0P
15	HDMI3-SCL	6	HDMI3-RX1N
14	HDMI-A_ARC	7	HDMI3-RX1P
13	HDMI3_CEC	8	HDMI3-RX2N
12	HDMI3_CEC	9	HDMI3-RX2P
11	CLK+	10	HDMI3-CLKN
10	CLKS	11	HDMI3-CLKP
9	CLK+	12	HDMI3-RX0N
8	DATA0-	13	HDMI3-RX0P
7	DATA0S	14	HDMI3-RX1N
6	DATA0+	15	HDMI3-RX1P
5	DATA1-	16	HDMI3-RX2N
4	DATA1S	17	HDMI3-RX2P
3	DATA1+	18	HDMI3-CLKN
2	DATA2-	19	HDMI3-CLKP
1	DATA2S	20	HDMI3-RX0N
0	DATA2+	21	HDMI3-RX0P

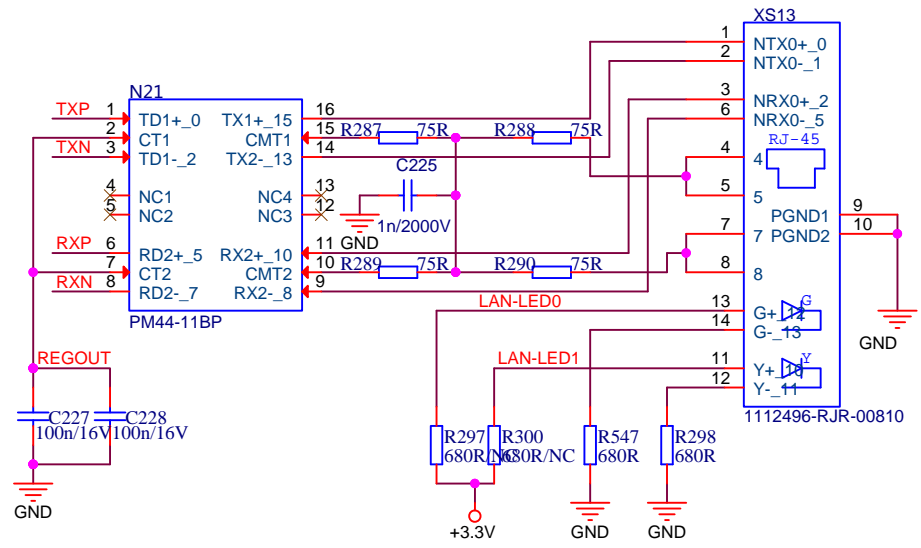
**DCTR019JB1**

**HDMI3 Interface Circuit Diagram:**

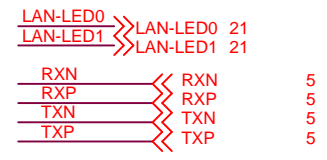
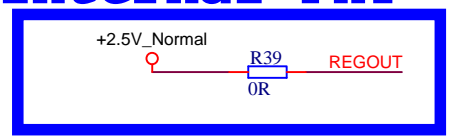
- HDMI3-5V:** Connected to the 5V pin of the DCTR019JB1 connector. A 100nF/16V capacitor (C218) is connected to ground.
- HDMI3-CLKN:** Connected to the CLKN pin of the DCTR019JB1 connector. A 10k resistor (R271) is connected to ground.
- HDMI3-CLKP:** Connected to the CLKP pin of the DCTR019JB1 connector. A 10k resistor (R272) is connected to ground.
- HDMI3-RX0N:** Connected to the RX0N pin of the DCTR019JB1 connector. A 10k resistor (R273) is connected to ground.
- HDMI3-RX0P:** Connected to the RX0P pin of the DCTR019JB1 connector. A 10k resistor (R274) is connected to ground.
- HDMI3-RX1N:** Connected to the RX1N pin of the DCTR019JB1 connector. A 10k resistor (R275) is connected to ground.
- HDMI3-RX1P:** Connected to the RX1P pin of the DCTR019JB1 connector. A 10k resistor (R276) is connected to ground.
- HDMI3-RX2N:** Connected to the RX2N pin of the DCTR019JB1 connector. A 10k resistor (R277) is connected to ground.
- HDMI3-RX2P:** Connected to the RX2P pin of the DCTR019JB1 connector. A 10k resistor (R278) is connected to ground.



Title				
MSD6I982BTX				
Size	Document Number			Rev
A3	HDMI			1.0
Date:	Wednesday, April 02, 2014	Sheet	6	of 11

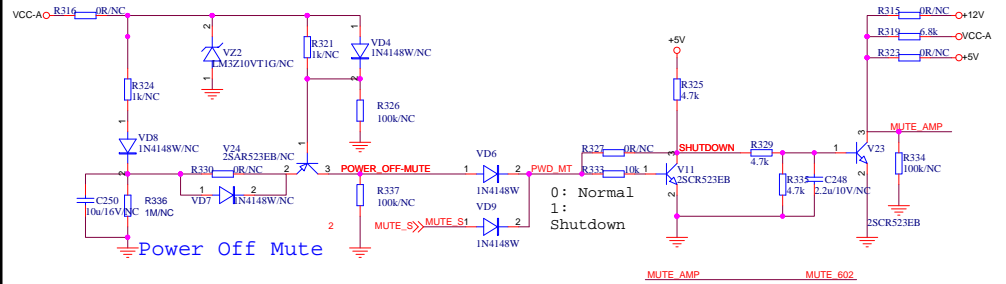


# Internal PHY



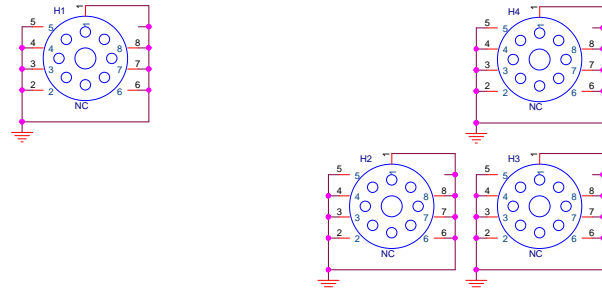
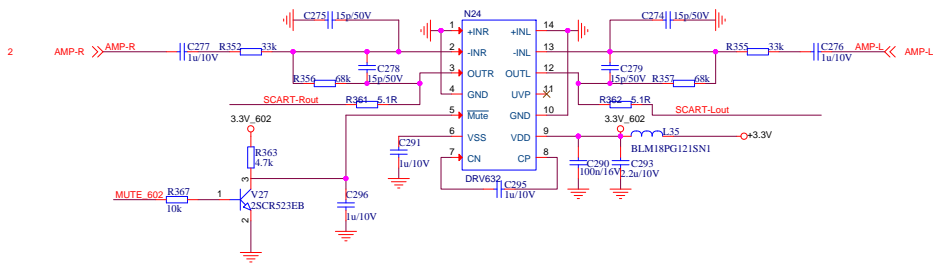


## MUTE

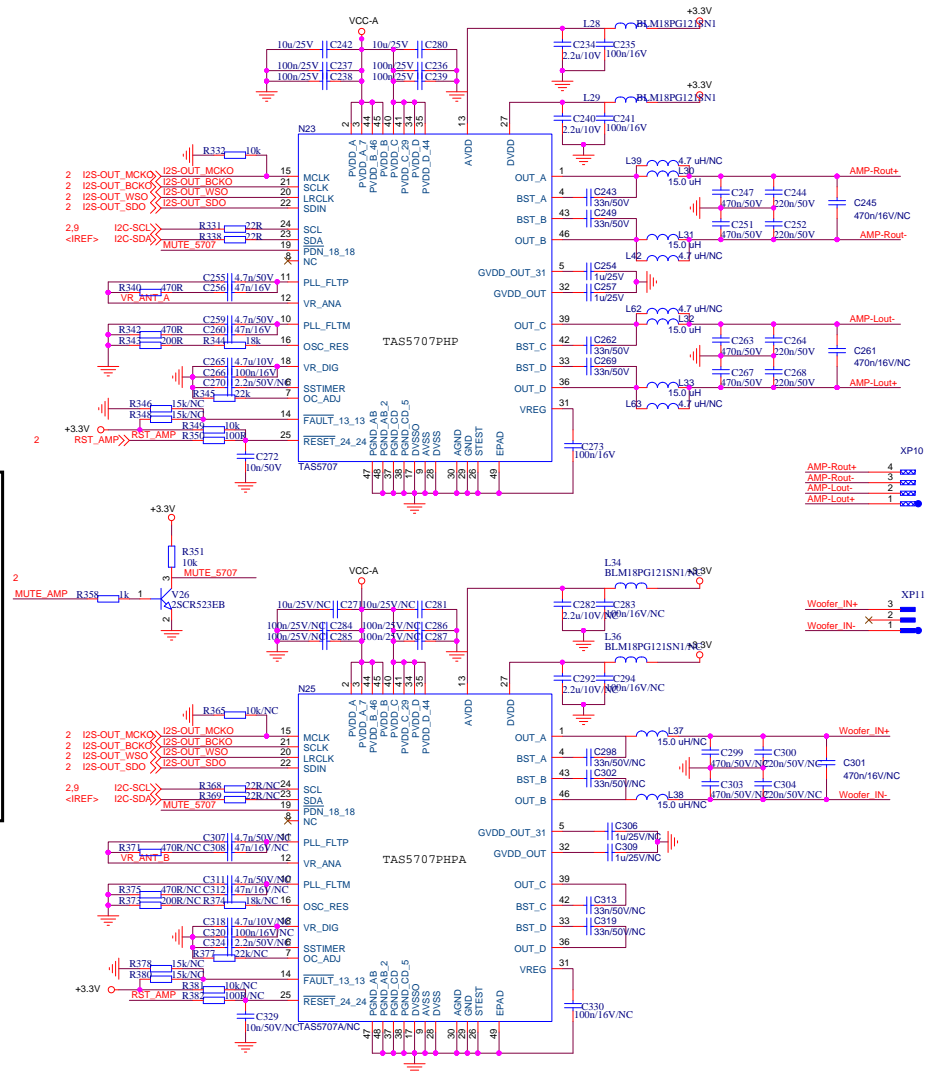
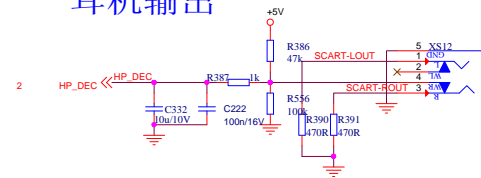


---

audio pre. AMP

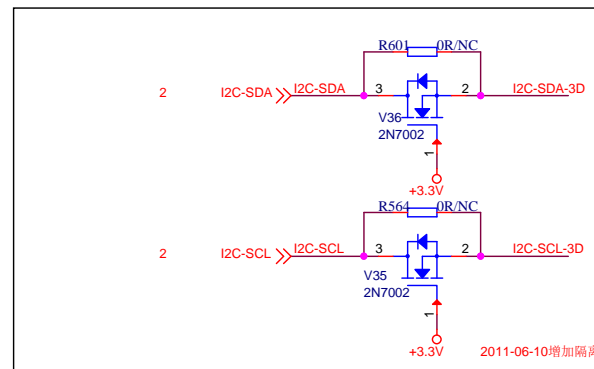
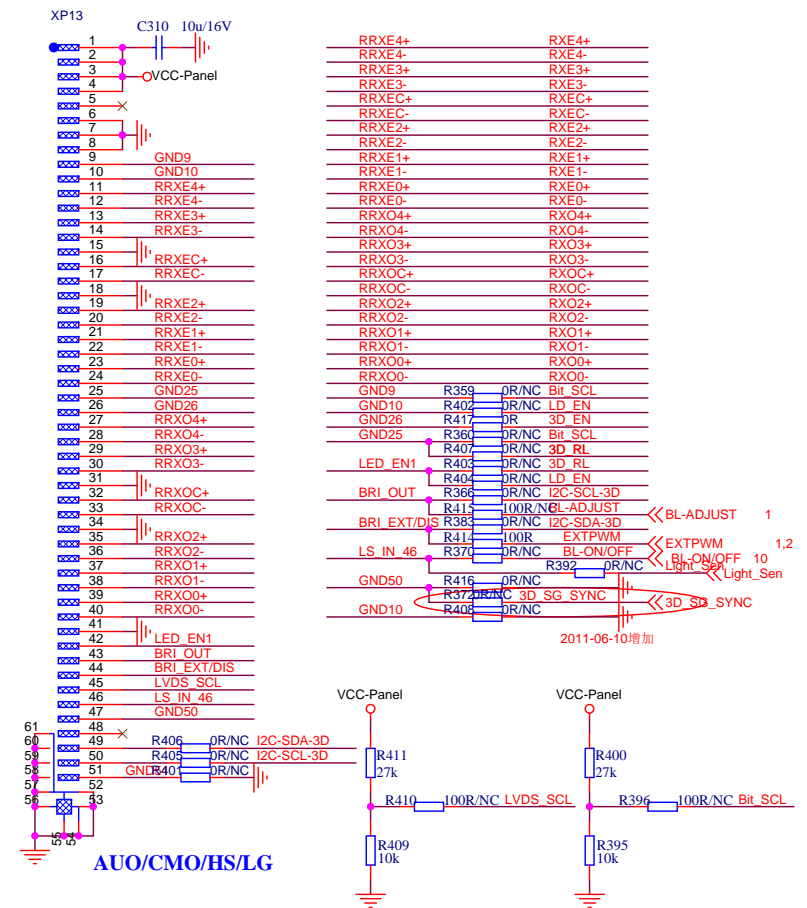
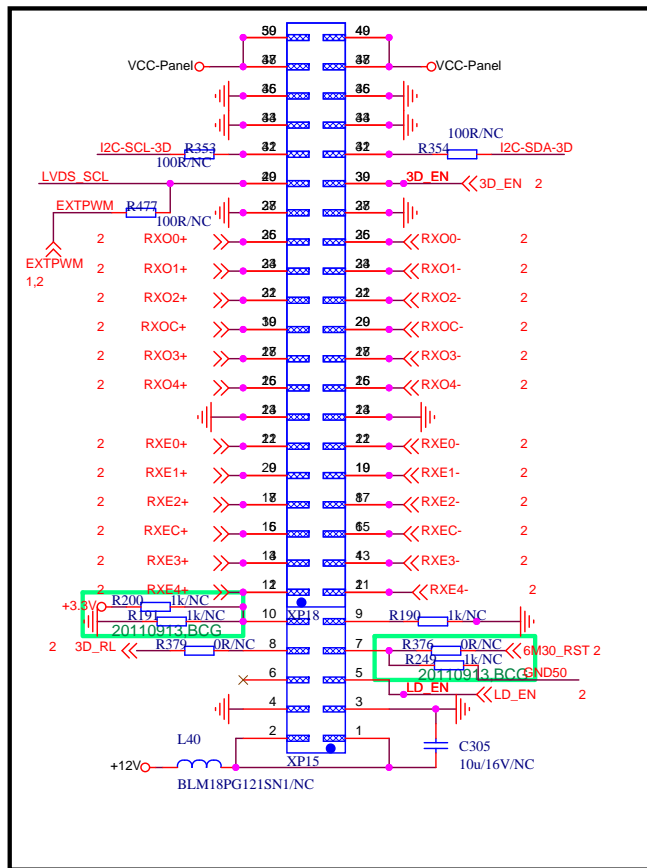


## 耳机输出



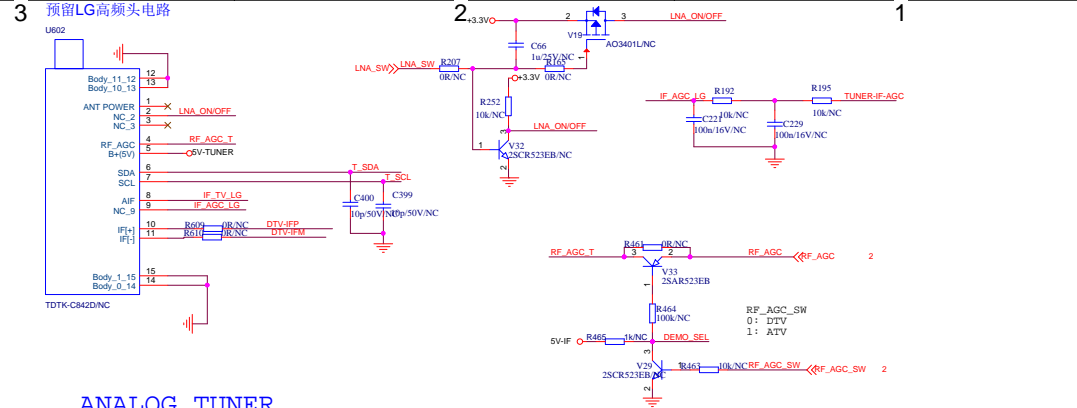
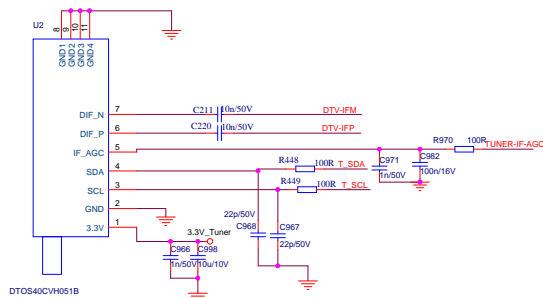
Title					MSD61982BTX				
Size	Document Number								Rev
Customer	Audio Amplifier								1.0
Date:	Wednesday, April 02, 2014				Sheet	8	of	11	





Title										MSD6I982BTX									
Size B		Document Number																Rev	
		LVDS																1.0	
Date:		Wednesday, April 02, 2014								Sheet		9		of		11			





## ANALOG TUNER

