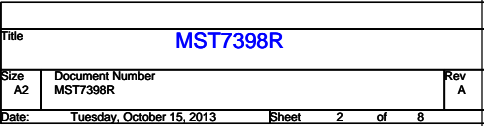
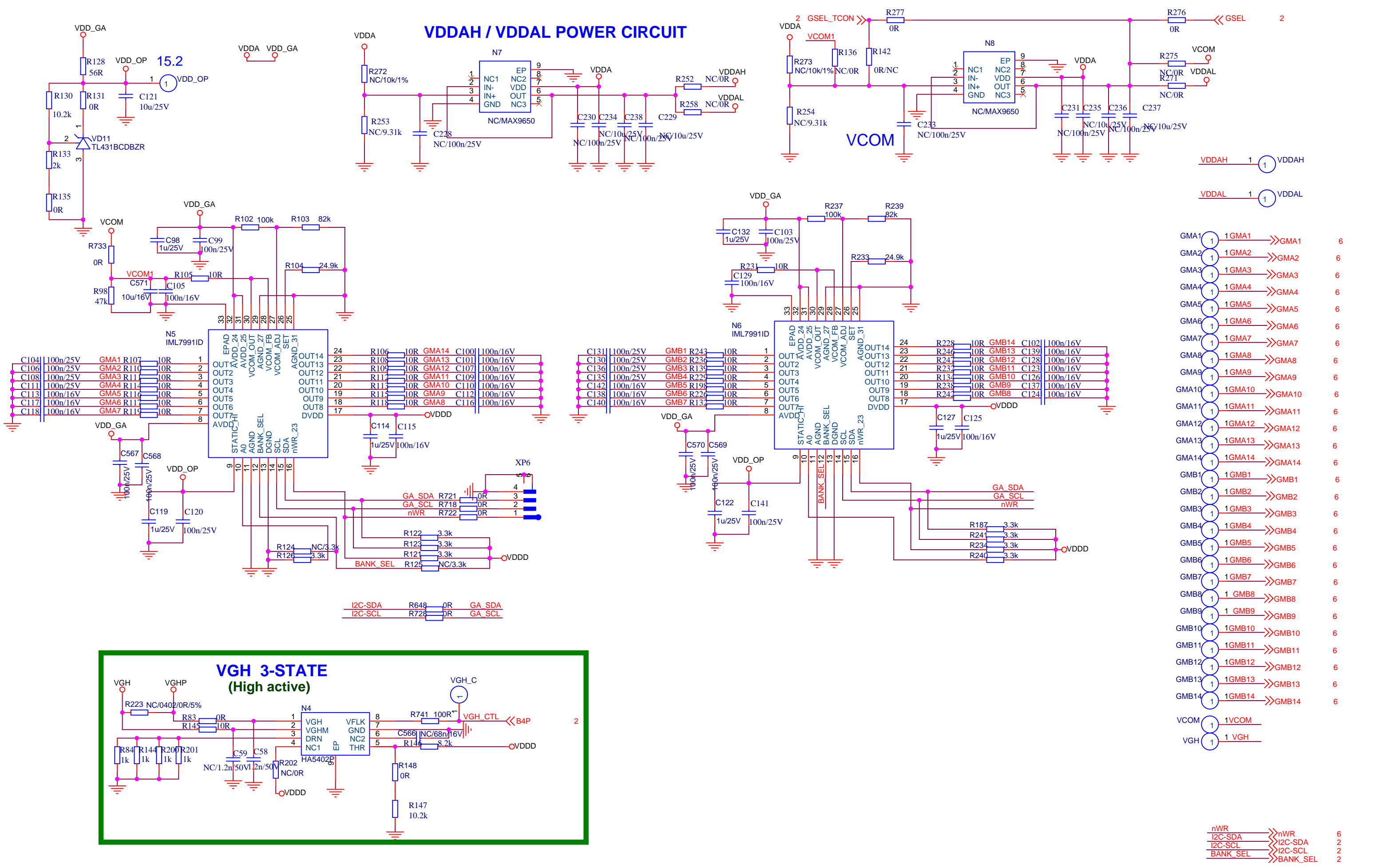
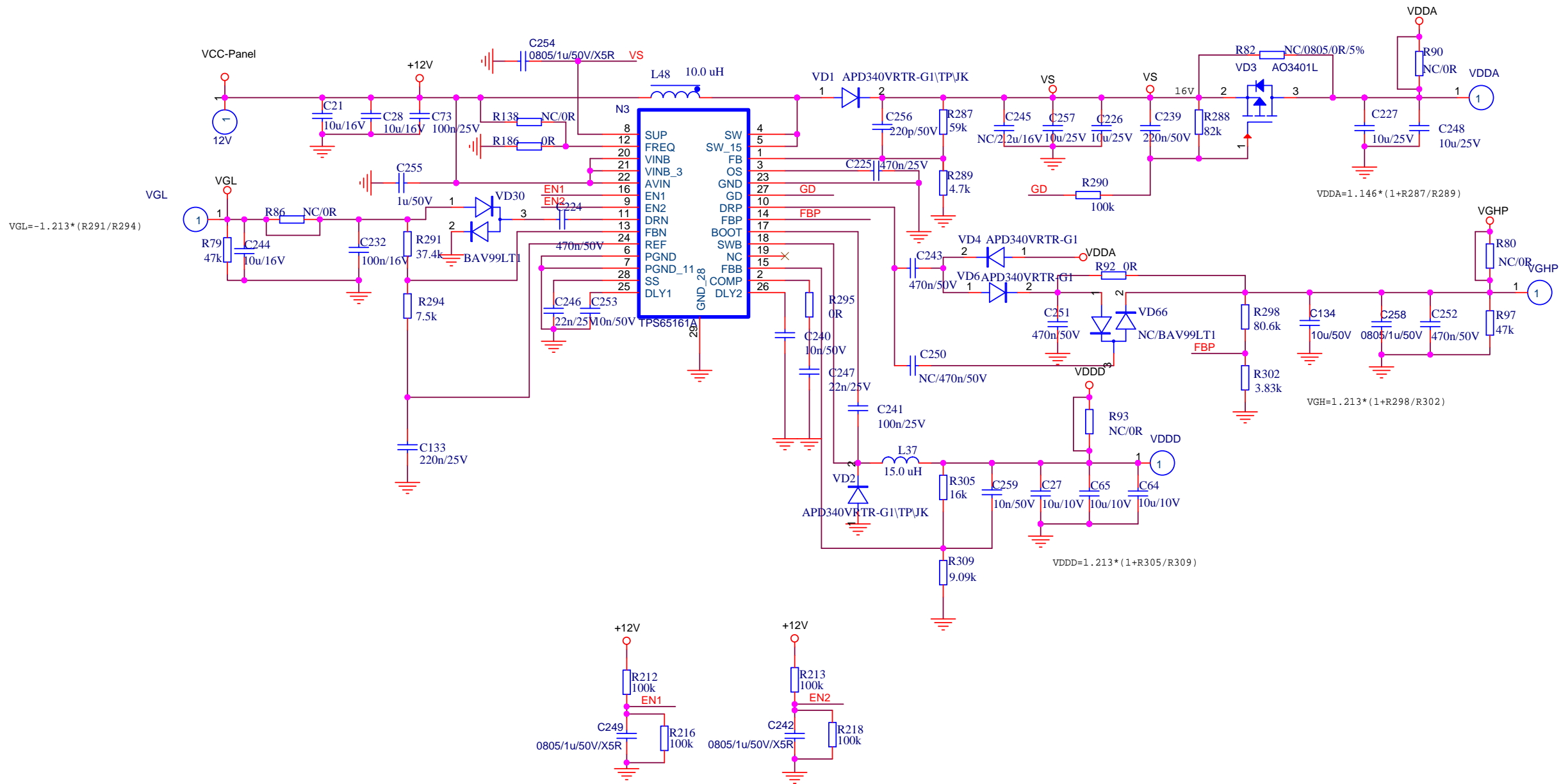


Title				MST7398R
Size	Document Number	Rev		A
Custom	POWER			
Date:	Tuesday, October 15, 2013	Sheet	1	of 8







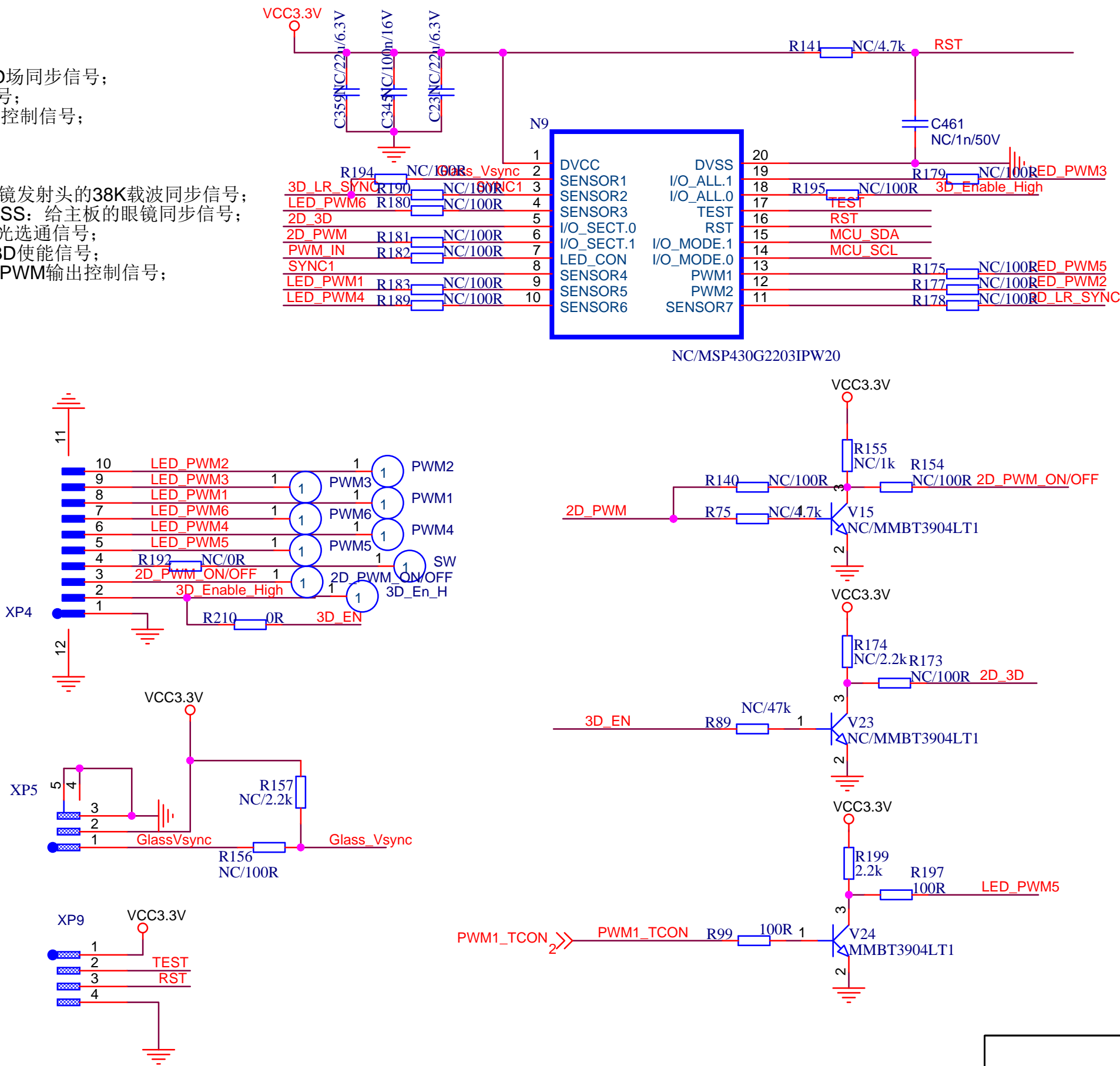
Title			MST7398R		
Size	Document Number				Rev
Custom	Tcon Power				A
Date:	Tuesday, October 15, 2013		Sheet	4	of 8

MCU输入信号:

3D\_LR\_SYNC1: 3D场同步信号;  
2D\_3D: 2D转3D信号;  
PWM\_IN: 背光输入控制信号;

MCU输出信号:

Glass\_Vsync: 给眼镜发射头的38K载波同步信号;  
3D\_LR\_SYNC\_GLASS: 给主板的眼镜同步信号;  
2D\_PWM: PWM背光选通信号;  
3D\_Enable\_High: 3D使能信号;  
LED\_PWM1-6: 6路PWM输出控制信号;



Title			MST7398R		
Size	Document Number				Rev
Custom	MCU				A
Date:	Tuesday, October 15, 2013		Sheet	5	of 8



