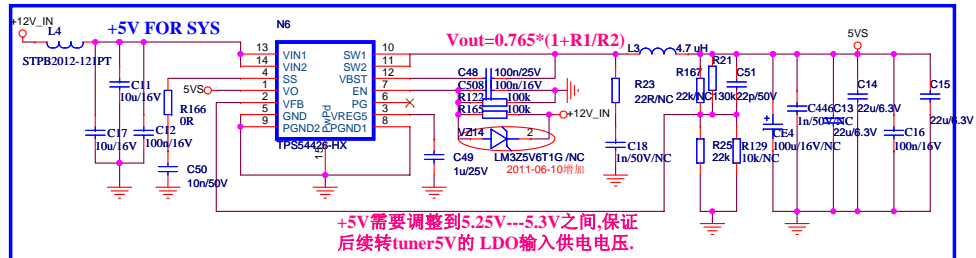
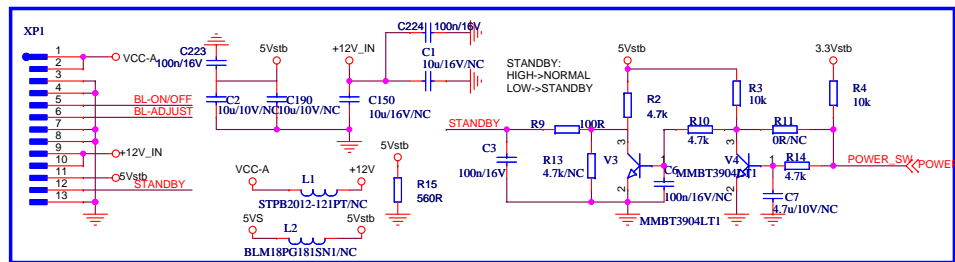
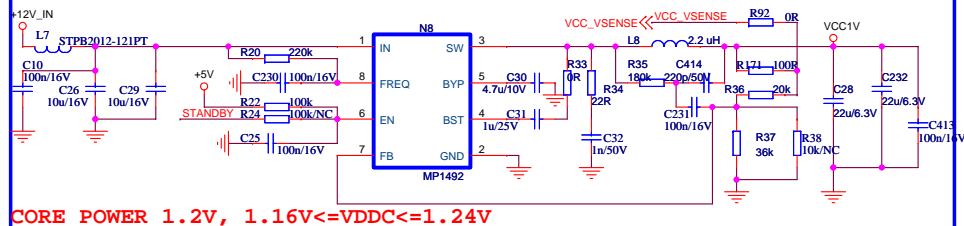


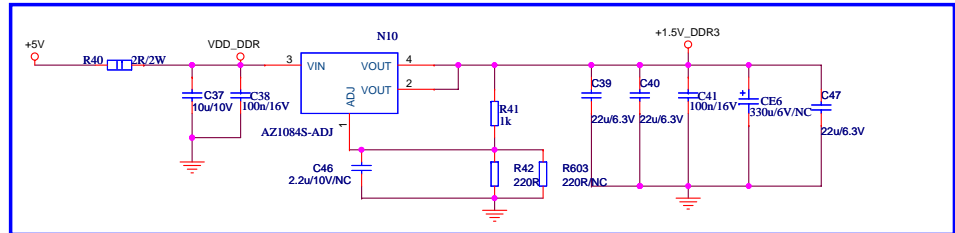
Power Input



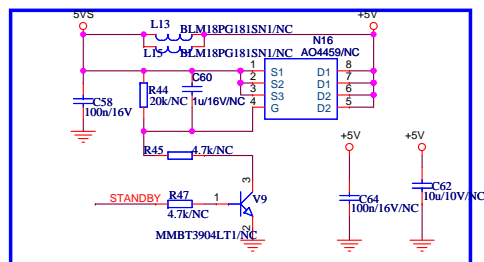
1.05V FOR 61982 CORE POWER



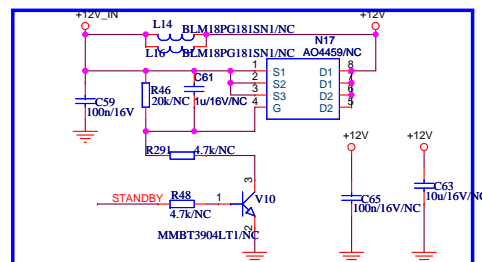
1.5V Power_DDR3(1105681)



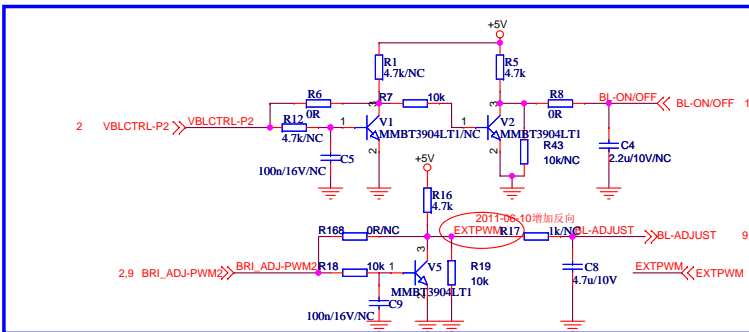
+5V POWER



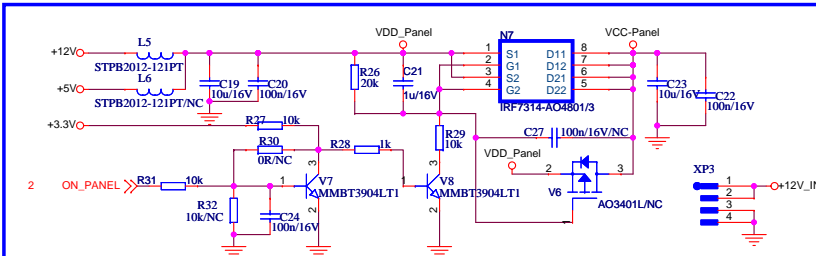
+12V POWER



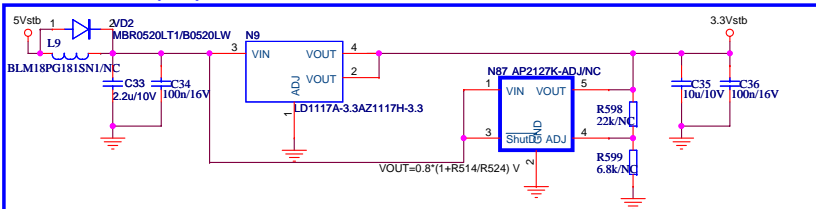
TO Inverter Board



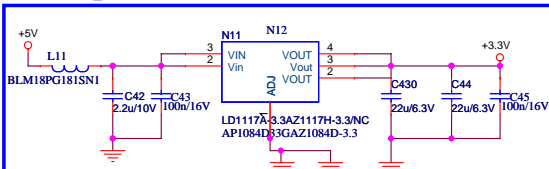
Power for Panel



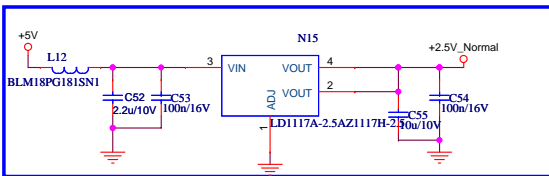
3.3V Power_Standby only for AVDD_MPLL and IR



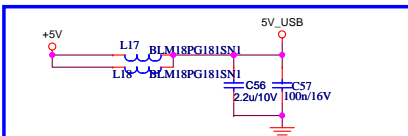
3.3V Power_Normal



2.5V FOR 61982

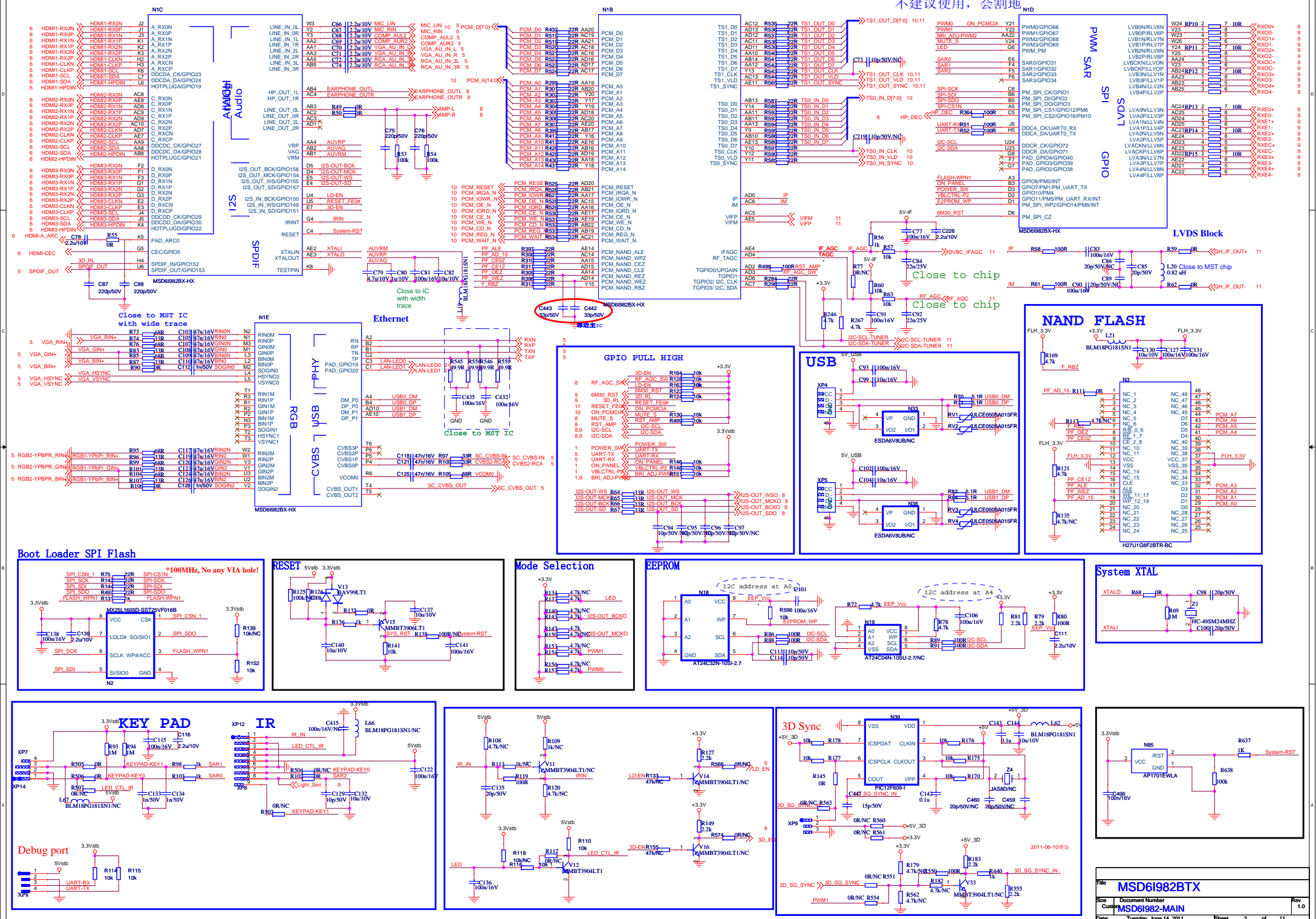


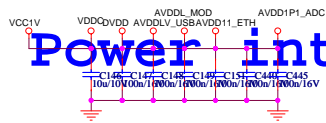
USB POWER



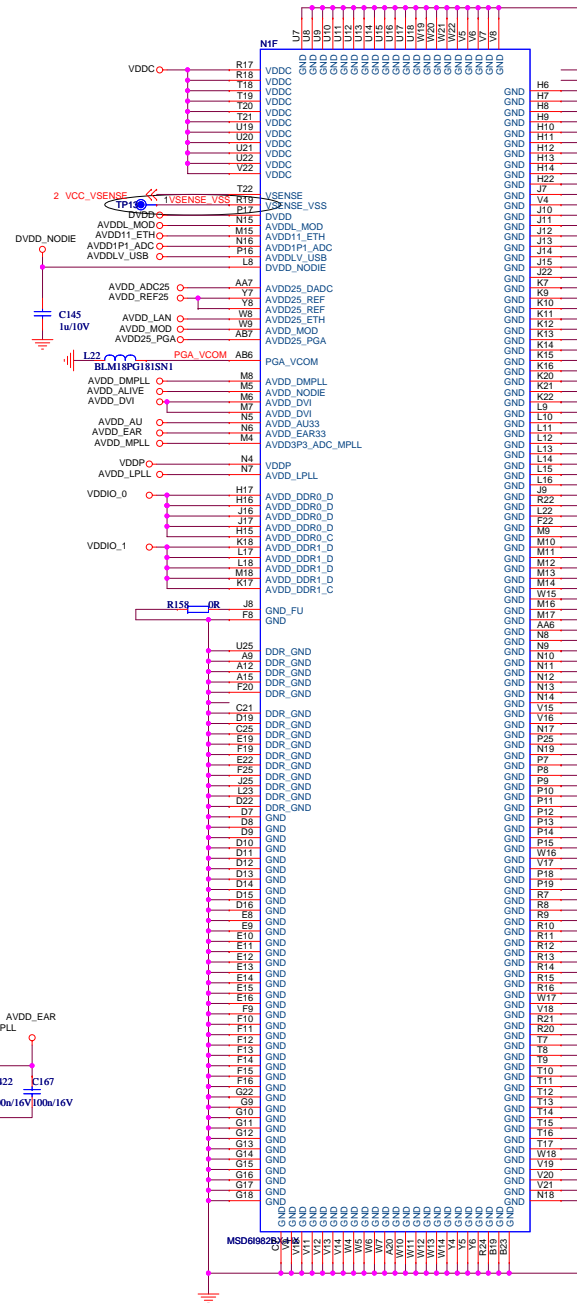
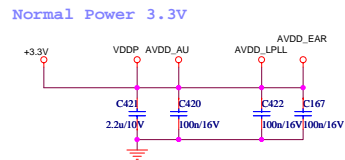
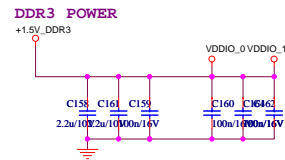
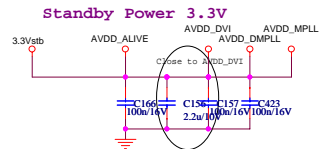
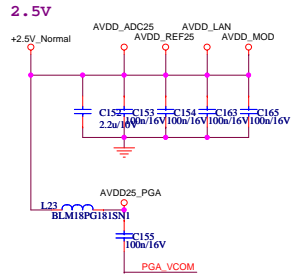
Title	MSD61982BTX	Rev	1.0
Size	Document Number	Sheet	1 of 11
Customer	System Power		
Date	Tuesday, June 14, 2011		

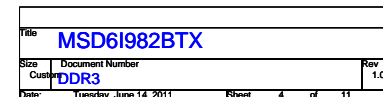
1.Ball G7, Ball G8, Ball F7, Ball D6,
Ball E7 ONLY SOCKET BOARD HAVE,两层板
不建议使用, 会割地

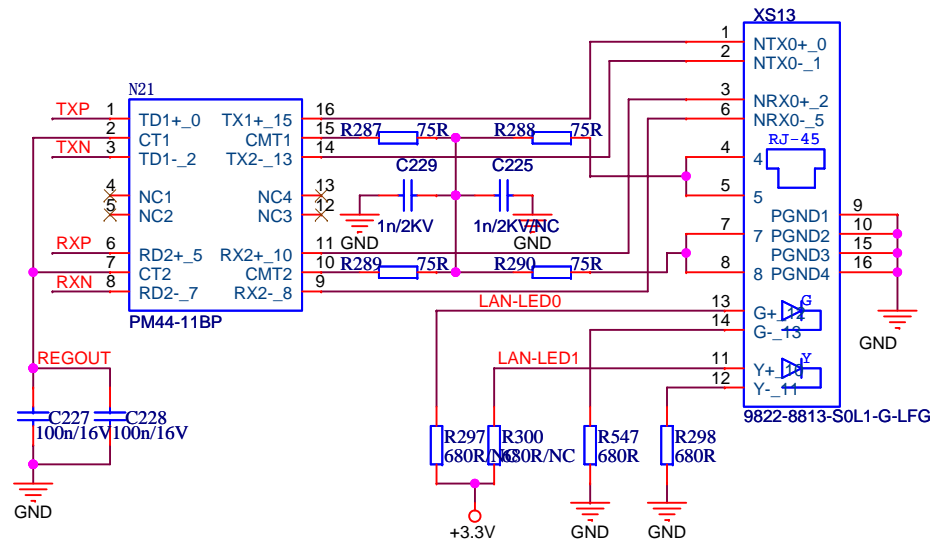




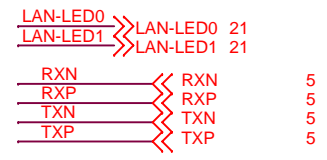
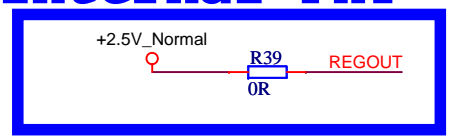
Power interface





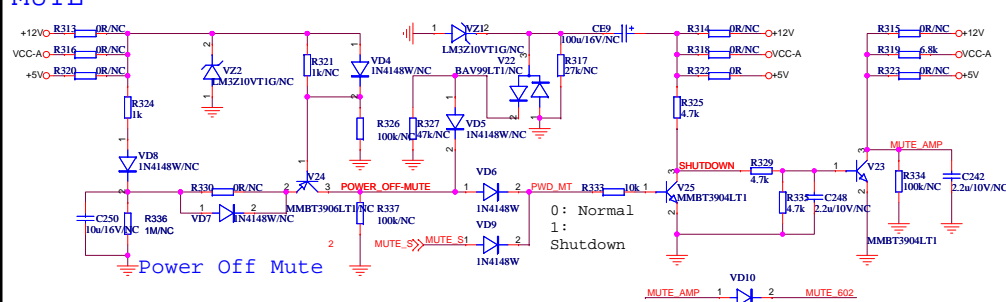


Internal PHY

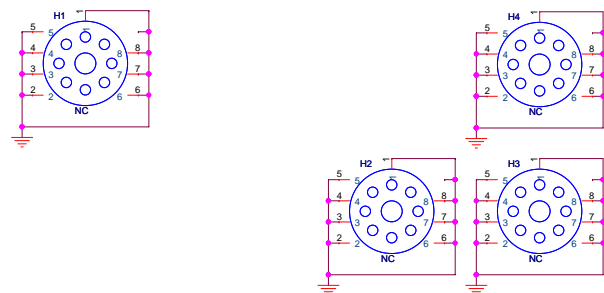
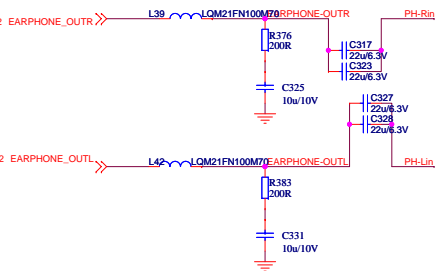
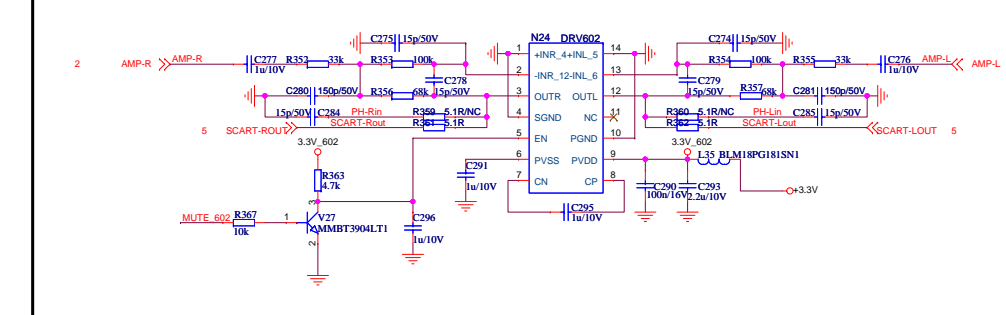


MUTE

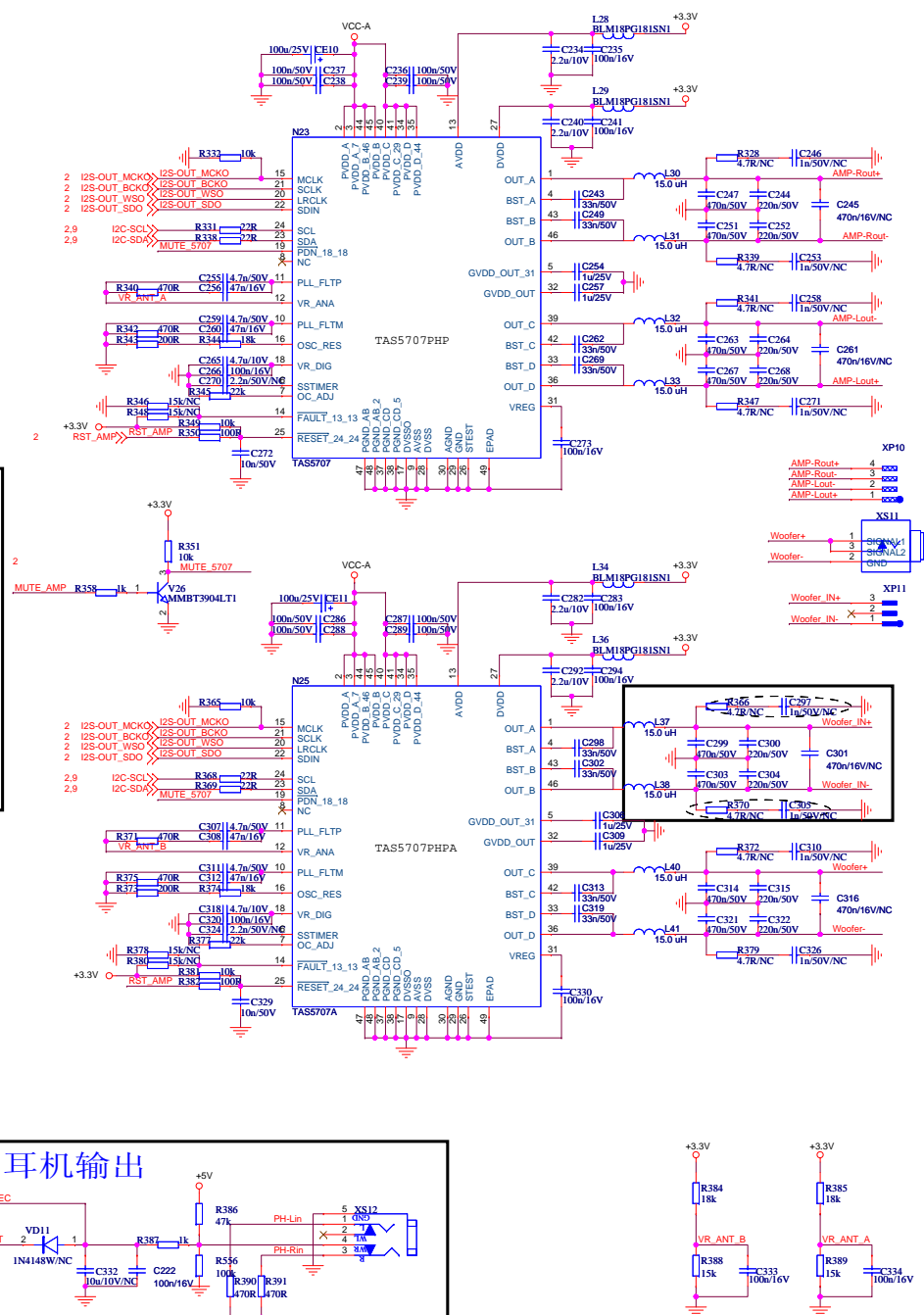
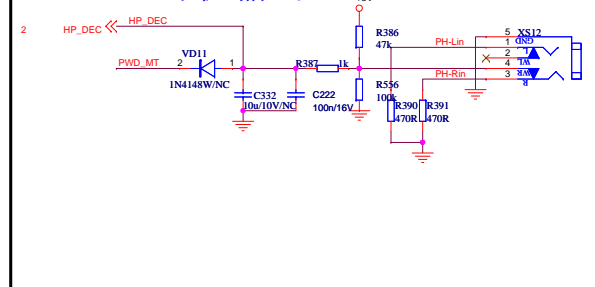
Power On Mute



audio pre. AMP

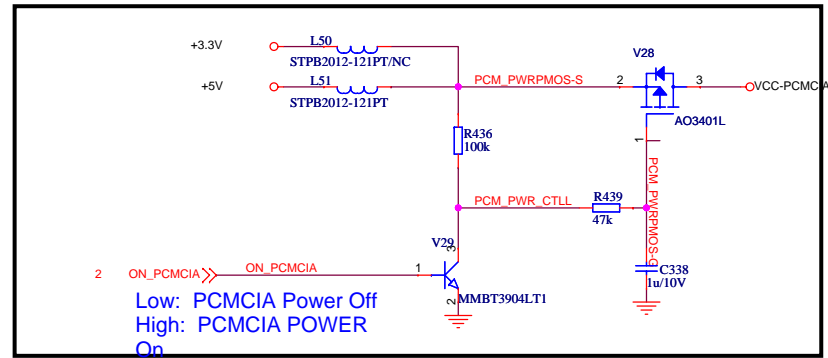


耳机输出



Title MSD6I982BTX				
Size Custom	Document Number Audio Amplifier			Rev 1.0
Date:	Tuesday, June 14, 2011	Sheet	8 of 11	

PCMCIA Power Control



PCMCIA Card Detect

