

SAMSUNG

TFT-LCD TV

Chassis Model
MU20UO LTP2035

***SERVICE* Manual**

TFT-LCD TV



CONTENTS

1. Precautions
2. Product Specifications
3. Disassembly & Reassembly
4. Alignment & Adjustments
5. Troubleshooting
6. Exploded View & Parts List
7. Electrical Parts List
8. Block Diagram
9. Wiring Diagram
10. PCB Layout
11. Schematic Diagrams
12. Panel Description



* This Service Manual is a property of Samsung Electronics Co., Ltd.
Any unauthorized use of Manual can be punished under applicable International and/or domestic law.

Samsung Electronics Co.,Ltd.

416, Maetan-3Dong, Paldal-Gu, Suwon City, Kyungki-Do, Korea, 442-742

Printed in Korea

P/N : BN82-00109E-00

[http : //www.samsungmonitor.com](http://www.samsungmonitor.com) (SyncMaster Worldwide)

[http : //www.samsung-monitor.com](http://www.samsung-monitor.com) (SyncMaster USA)

URL : <http://itself.sec.samsung.co.kr/>

4 Alignments and Adjustments

4-1 General Alignment Instruction

1. Usually, a color TV-VCR needs only slight touch-up adjustment upon installation.
Check the basic characteristics such as height, horizontal and vertical sync.
2. Use the specified test equipment or its equivalent.
3. Correct impedance matching is essential.
4. Avoid overload. Excessive signal from a sweep generator might overload the front-end of the TV.
When inserting signal markers, do not allow the marker generator to distort test result.
5. Connect the TV only to an AC power source with voltage and frequency as specified on the backcover nameplate.
6. Do not attempt to connect or disconnect any wire while the TV is turned on.
Make sure that the power cord is disconnected before replacing any parts.
7. To protect against shock hazard, use an isolation transform.

4-2 Factory Mode Adjustments

4-2-1 Entering Factory Mode

- To enter "Service Mode" Press the remote -control keys in this sequence :

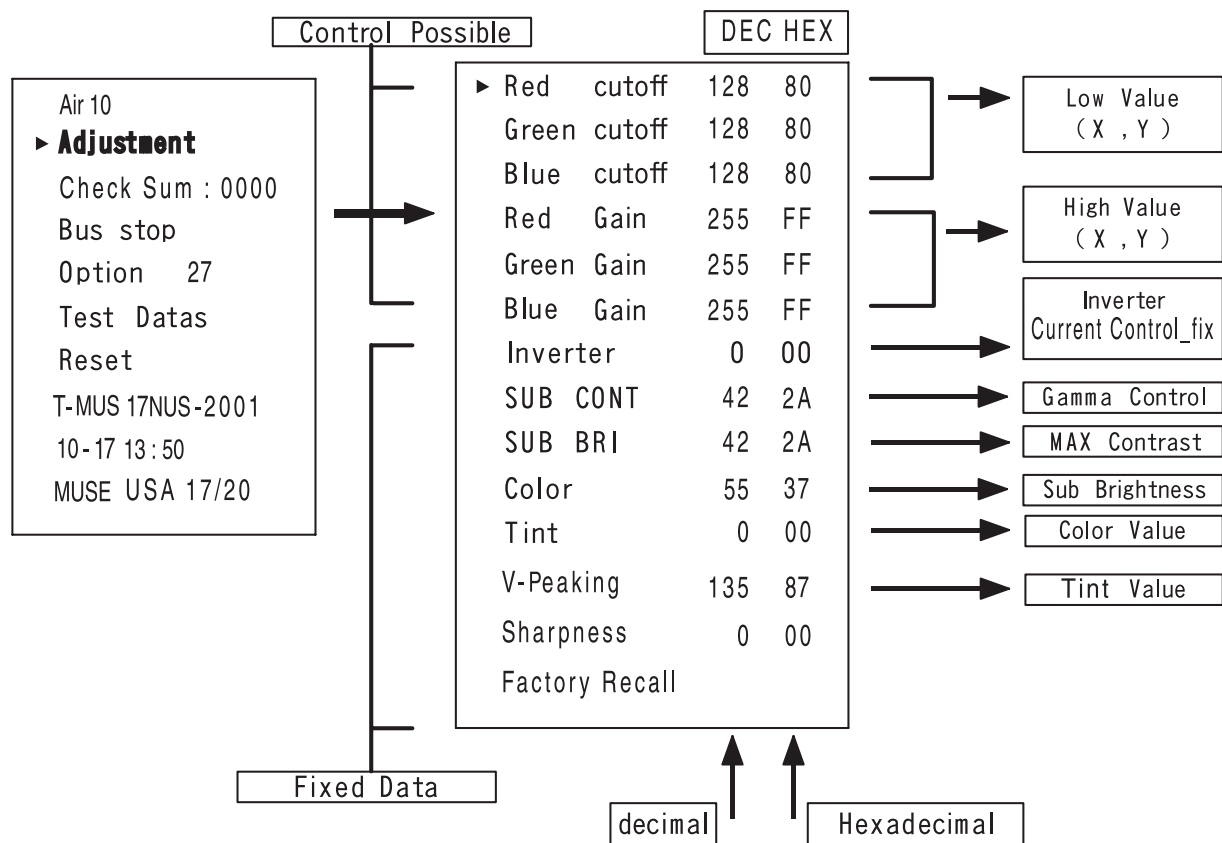
- If you do not have Factory remote - control



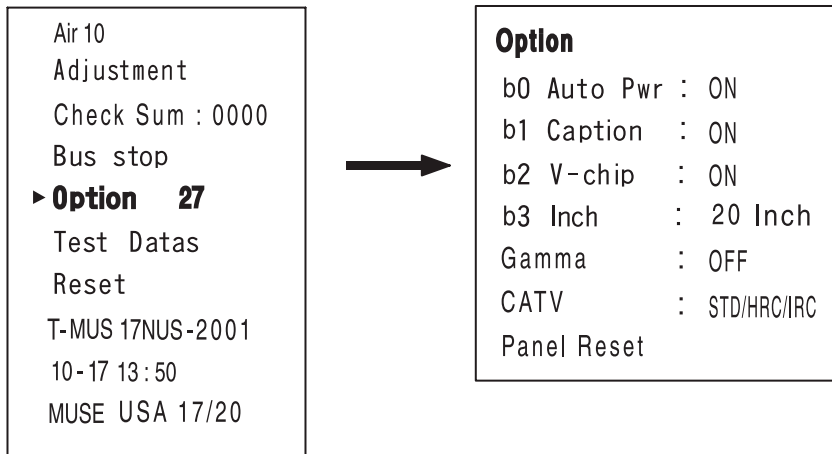
- If you have Factory remote - control



4-2-2 Factory Mode Tree (U.S. Only)



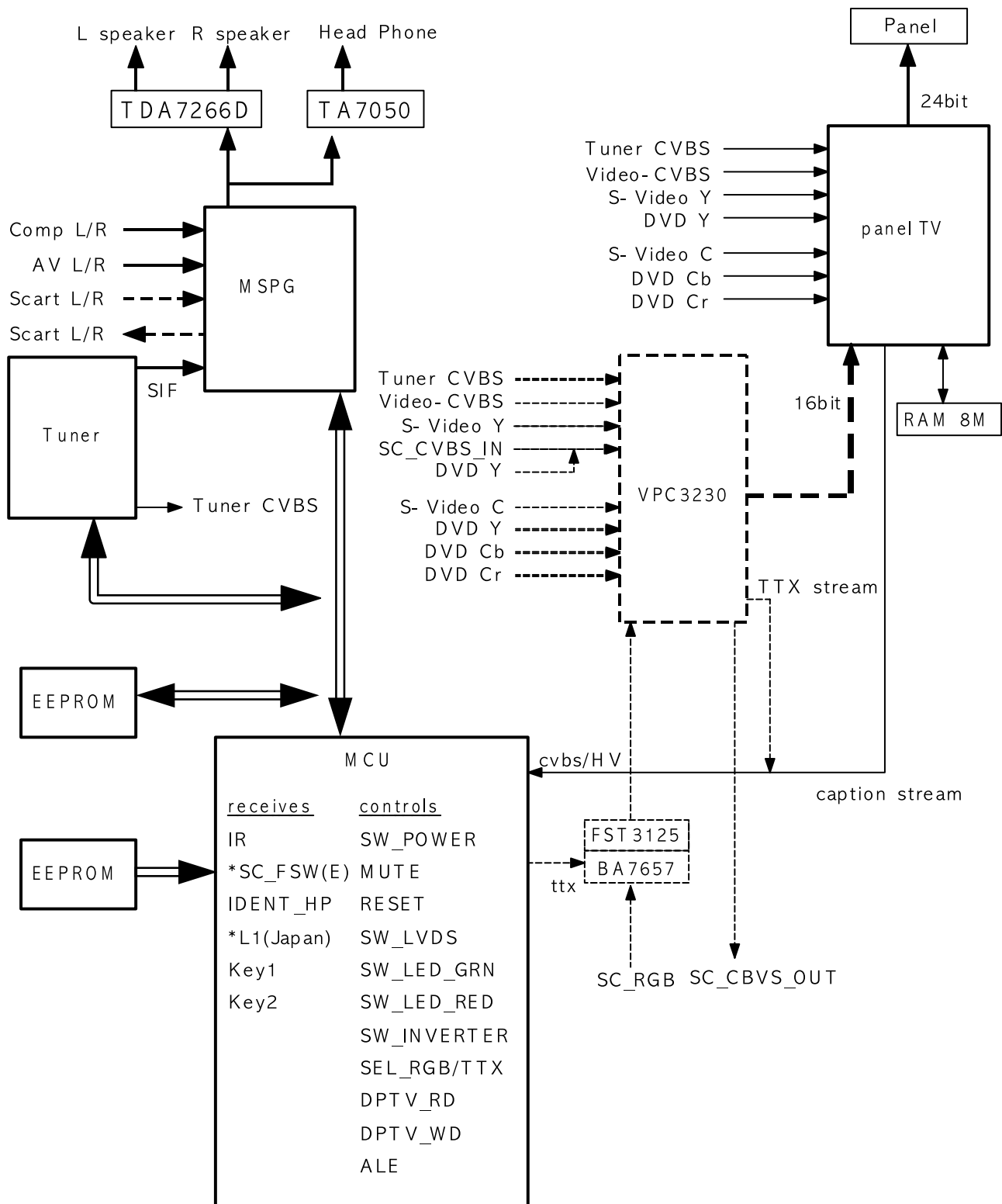
	RF	Component
CONT	42 2A	43 2B
BRI	42 2A	47 2F
COLOR	55 37	55 37

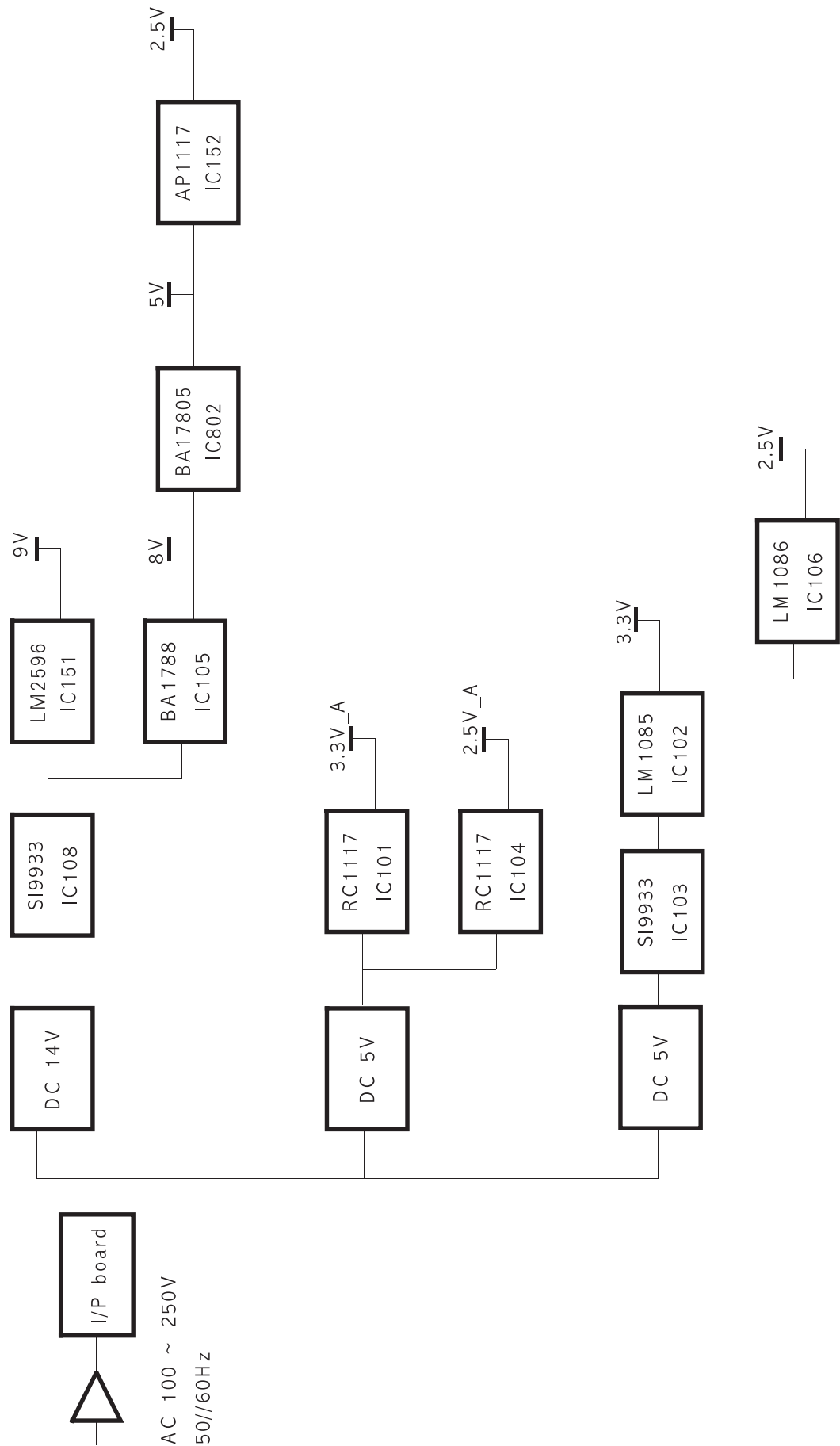


Memo

8 Block Diagram

* This Document can not be used without Samsung's authorization.





3 Disassembly and Reassembly

This section of the service manual describes the disassembly and reassembly procedures for the LTP2035 TFT-LCD monitors.

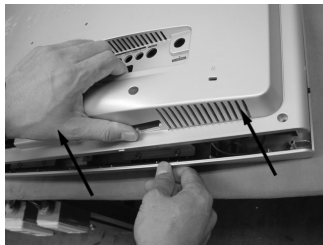
WARNING: This monitor contains electrostatically sensitive devices. Use caution when handling these components.

3-1 Disassembly

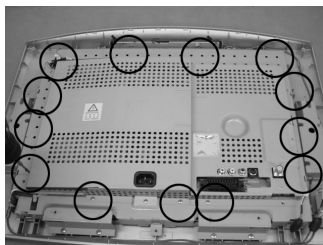
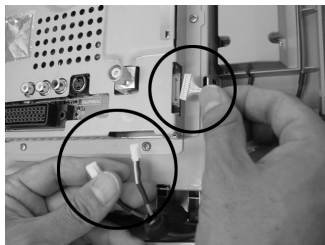
- Cautions:
1. Disconnect the monitor from the power source before disassembly.
 2. Follow these directions carefully; never use metal instruments to pry apart the cabinet.
 3. R/Cover opening jig : BH81-00001A



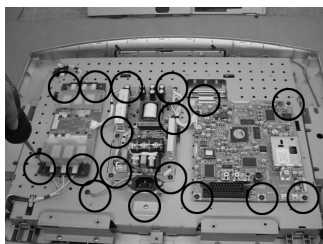
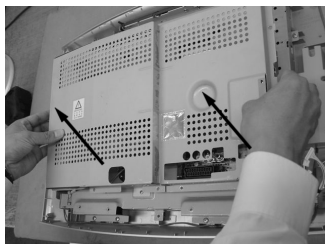
1. Place monitor face down on cushioned table. Remove 4 screws from grip on the stand and remove the stand.



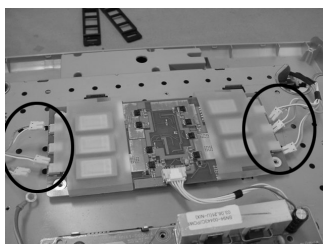
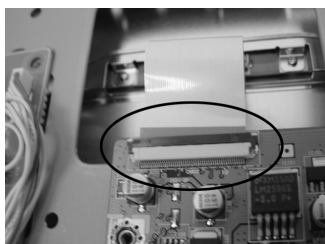
2. Remove 5 screws from the back cover and remove the back cover.



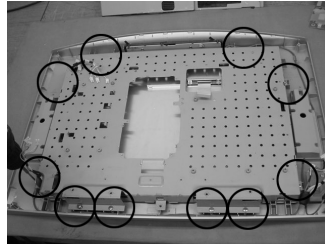
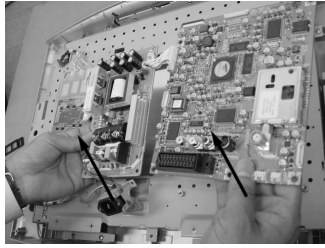
3. Disconnect speaker cable and IR cable from the shield PCB. Remove 13 screws from the shield PCB.



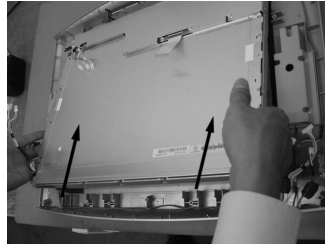
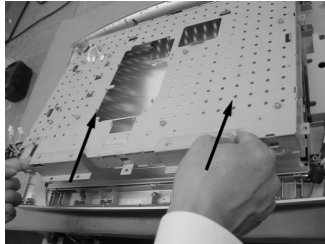
4. Lift up the shield PCB and remove 17 screws from the MAIN boards.



5. Disconnect TTL cable and inverter cables from the MAIN boards.



6. Lift up the boards and remove 10 screws from the shield panel.



7. Remove the shield panel.

3-2 Reassembly

Reassembly procedures are in the reverse order of disassembly procedures.

※ Inverter cable may be inserted to any connector on the monitor board for assembly.

7 Electrical Parts List

* You can search for updated part codes through ITSELF web site.

URL : <http://itself.sec.samsung.co.kr/>

7-1 Main PCB Parts

Level	Loc. No.	Code No.	Description	Specification	Remarks
0		MU20UO			
1	-	CP-MU20UO	1	CHIMEI	-
3	-	BN94-00511A	ASSY PCB MAIN	MU20UO	SNA
4	CIS	3705-001329	CONNECTOR-COAXIAL	NT(F),ADAPTOR,-,75ohm,-	SA
4	CN120	3711-004182	CONNECTOR-HEADER	BOX,10P,1R,-,STRAIGHT,SN	SA
4	CN902	3722-001957	JACK-PIN	1P,-,AU,YEL,-	SNA
4	CN903	3722-001846	JACK-PIN	2P,8.3MM,AU,WHT/RED,-	SA
4	CN905	3722-001846	JACK-PIN	2P,8.3MM,AU,WHT/RED,-	SA
4	CN908	3722-001734	JACK-VHS	4P,-,SN,BLK,-	SA
4	CN925	3722-001845	JACK-PIN	3P,8.3MM,AU,GRN/BLU/RED,-	SA
4	TM701	BN40-00037A	TUNER	TMQH6-003A,MUSE,NTSC,181CH,45.75MHz,75 ohm,75 ohm,PHONE,ASYMM,5V,TR	SA
4	MICOM	BN97-00348B	ASSY MICOM	MU20UO	SNA
5	IC202	1102-001129	IC-EPROM	M27W401,512KX8BIT,PLCC,32P,11.35X13.89MM,80NS,3.3V,10%,PLASTIC,-40TO+85C,-,CMOS,	SA
5	CIS	BN82-00108R	A/S MICOM	MU20UO	SNA
4	-	BN97-00349A	ASSY SMD	MU20UO	SNA
5	20_CHIMEI_PANEL	3301-001145	BEAD-SMD	4.5x1.6x1.6mm,-,-	SNA
5	C001	2402-000135	C-AL,SMD	22uF,20%,16V,GP,TP,5.3x5.3x5.4	SA
5	C002	2203-005005	C-CER,CHIP	100nF,10%,16V,X7R,TP,1608	SA
5	C003	2203-005005	C-CER,CHIP	100nF,10%,16V,X7R,TP,1608	SA
5	C004	2203-005005	C-CER,CHIP	100nF,10%,16V,X7R,TP,1608	SA
5	C005	2203-005005	C-CER,CHIP	100nF,10%,16V,X7R,TP,1608	SA
5	C006	2203-005005	C-CER,CHIP	100nF,10%,16V,X7R,TP,1608	SA
5	C007	2203-005005	C-CER,CHIP	100nF,10%,16V,X7R,TP,1608	SA
5	C008	2203-005005	C-CER,CHIP	100nF,10%,16V,X7R,TP,1608	SA
5	C009	2203-005005	C-CER,CHIP	100nF,10%,16V,X7R,TP,1608	SA
5	C010	2203-005005	C-CER,CHIP	100nF,10%,16V,X7R,TP,1608	SA
5	C011	2203-005005	C-CER,CHIP	100nF,10%,16V,X7R,TP,1608	SA
5	C012	2203-005005	C-CER,CHIP	100nF,10%,16V,X7R,TP,1608	SA
5	C013	2203-005005	C-CER,CHIP	100nF,10%,16V,X7R,TP,1608	SA
5	C014	2203-005005	C-CER,CHIP	100nF,10%,16V,X7R,TP,1608	SA
5	C015	2402-000135	C-AL,SMD	22uF,20%,16V,GP,TP,5.3x5.3x5.4	SA
5	C016	2203-005005	C-CER,CHIP	100nF,10%,16V,X7R,TP,1608	SA
5	C017	2203-005005	C-CER,CHIP	100nF,10%,16V,X7R,TP,1608	SA
5	C018	2203-005005	C-CER,CHIP	100nF,10%,16V,X7R,TP,1608	SA
5	C019	2203-005005	C-CER,CHIP	100nF,10%,16V,X7R,TP,1608	SA
5	C020	2203-005005	C-CER,CHIP	100nF,10%,16V,X7R,TP,1608	SA
5	C021	2203-005005	C-CER,CHIP	100nF,10%,16V,X7R,TP,1608	SA
5	C022	2203-005005	C-CER,CHIP	100nF,10%,16V,X7R,TP,1608	SA
5	C023	2203-005005	C-CER,CHIP	100nF,10%,16V,X7R,TP,1608	SA
5	C024	2203-005005	C-CER,CHIP	100nF,10%,16V,X7R,TP,1608	SA
5	C025	2203-005005	C-CER,CHIP	100nF,10%,16V,X7R,TP,1608	SA
5	C026	2203-005005	C-CER,CHIP	100nF,10%,16V,X7R,TP,1608	SA
5	C027	2203-005005	C-CER,CHIP	100nF,10%,16V,X7R,TP,1608	SA
5	C028	2203-005005	C-CER,CHIP	100nF,10%,16V,X7R,TP,1608	SA
5	C029	2402-000135	C-AL,SMD	22uF,20%,16V,GP,TP,5.3x5.3x5.4	SA
5	C030	2203-005005	C-CER,CHIP	100nF,10%,16V,X7R,TP,1608	SA
5	C031	2203-005005	C-CER,CHIP	100nF,10%,16V,X7R,TP,1608	SA
5	C032	2203-005005	C-CER,CHIP	100nF,10%,16V,X7R,TP,1608	SA
5	C033	2203-005005	C-CER,CHIP	100nF,10%,16V,X7R,TP,1608	SA
5	C034	2203-005005	C-CER,CHIP	100nF,10%,16V,X7R,TP,1608	SA
5	C035	2203-005005	C-CER,CHIP	100nF,10%,16V,X7R,TP,1608	SA
5	C036	2203-005005	C-CER,CHIP	100nF,10%,16V,X7R,TP,1608	SA
5	C037	2203-005005	C-CER,CHIP	100nF,10%,16V,X7R,TP,1608	SA
5	C038	2203-005005	C-CER,CHIP	100nF,10%,16V,X7R,TP,1608	SA
5	C039	2203-005005	C-CER,CHIP	100nF,10%,16V,X7R,TP,1608	SA
5	C040	2203-005005	C-CER,CHIP	100nF,10%,16V,X7R,TP,1608	SA
5	C041	2402-000135	C-AL,SMD	22uF,20%,16V,GP,TP,5.3x5.3x5.4	SA

Level	Loc. No.	CodeNo.	Description	Specification	Remarks
5	C042	2203-005005	C-CER,CHIP	100nF,10%,16V,X7R,TP,1608	SA
5	C043	2203-005005	C-CER,CHIP	100nF,10%,16V,X7R,TP,1608	SA
5	C044	2203-005005	C-CER,CHIP	100nF,10%,16V,X7R,TP,1608	SA
5	C045	2203-005005	C-CER,CHIP	100nF,10%,16V,X7R,TP,1608	SA
5	C046	2203-005005	C-CER,CHIP	100nF,10%,16V,X7R,TP,1608	SA
5	C047	2203-005005	C-CER,CHIP	100nF,10%,16V,X7R,TP,1608	SA
5	C048	2203-005005	C-CER,CHIP	100nF,10%,16V,X7R,TP,1608	SA
5	C049	2203-005005	C-CER,CHIP	100nF,10%,16V,X7R,TP,1608	SA
5	C050	2203-005005	C-CER,CHIP	100nF,10%,16V,X7R,TP,1608	SA
5	C051	2203-005005	C-CER,CHIP	100nF,10%,16V,X7R,TP,1608	SA
5	C052	2402-000135	C-AL,SMD	22uF,20%,16V,GP,TP,5.3x5.3x5.4	SA
5	C053	2203-005005	C-CER,CHIP	100nF,10%,16V,X7R,TP,1608	SA
5	C054	2203-005005	C-CER,CHIP	100nF,10%,16V,X7R,TP,1608	SA
5	C055	2203-005005	C-CER,CHIP	100nF,10%,16V,X7R,TP,1608	SA
5	C056	2203-005005	C-CER,CHIP	100nF,10%,16V,X7R,TP,1608	SA
5	C057	2203-005005	C-CER,CHIP	100nF,10%,16V,X7R,TP,1608	SA
5	C058	2203-005005	C-CER,CHIP	100nF,10%,16V,X7R,TP,1608	SA
5	C059	2203-005005	C-CER,CHIP	100nF,10%,16V,X7R,TP,1608	SA
5	C060	2203-005005	C-CER,CHIP	100nF,10%,16V,X7R,TP,1608	SA
5	C061	2203-005005	C-CER,CHIP	100nF,10%,16V,X7R,TP,1608	SA
5	C062	2203-005005	C-CER,CHIP	100nF,10%,16V,X7R,TP,1608	SA
5	C063	2402-000135	C-AL,SMD	22uF,20%,16V,GP,TP,5.3x5.3x5.4	SA
5	C064	2203-005005	C-CER,CHIP	100nF,10%,16V,X7R,TP,1608	SA
5	C065	2203-005005	C-CER,CHIP	100nF,10%,16V,X7R,TP,1608	SA
5	C066	2203-005005	C-CER,CHIP	100nF,10%,16V,X7R,TP,1608	SA
5	C067	2203-005005	C-CER,CHIP	100nF,10%,16V,X7R,TP,1608	SA
5	C068	2203-005005	C-CER,CHIP	100nF,10%,16V,X7R,TP,1608	SA
5	C069	2203-005005	C-CER,CHIP	100nF,10%,16V,X7R,TP,1608	SA
5	C070	2203-005005	C-CER,CHIP	100nF,10%,16V,X7R,TP,1608	SA
5	C071	2203-005005	C-CER,CHIP	100nF,10%,16V,X7R,TP,1608	SA
5	C072	2203-005005	C-CER,CHIP	100nF,10%,16V,X7R,TP,1608	SA
5	C101	2402-001042	C-AL,SMD	100uF,20%,16V,GP,TP,6.6x6.6x5.4mm	SA
5	C102	2203-000189	C-CER,CHIP	100nF,+80-20%,25V,Y5V,TP,1608,	SA
5	C103	2402-001042	C-AL,SMD	100uF,20%,16V,GP,TP,6.6x6.6x5.4mm	SA
5	C104	2203-000189	C-CER,CHIP	100nF,+80-20%,25V,Y5V,TP,1608,	SA
5	C105	2402-001042	C-AL,SMD	100uF,20%,16V,GP,TP,6.6x6.6x5.4mm	SA
5	C106	2402-000170	C-AL,SMD	1uF,20%,50V,GP,TP,4.3x4.3x5.4,	SA
5	C107	2203-005005	C-CER,CHIP	100nF,10%,16V,X7R,TP,1608	SA
5	C108	2402-001042	C-AL,SMD	100uF,20%,16V,GP,TP,6.6x6.6x5.4mm	SA
5	C109	2402-001042	C-AL,SMD	100uF,20%,16V,GP,TP,6.6x6.6x5.4mm	SA
5	C110	2203-005005	C-CER,CHIP	100nF,10%,16V,X7R,TP,1608	SA
5	C111	2402-001081	C-AL,SMD	100uF,20%,25V,WT,TP,8.3x8.3x10	SA
5	C112	2203-000189	C-CER,CHIP	100nF,+80-20%,25V,Y5V,TP,1608,	SA
5	C113	2402-000170	C-AL,SMD	1uF,20%,50V,GP,TP,4.3x4.3x5.4,	SA
5	C116	2203-000189	C-CER,CHIP	100nF,+80-20%,25V,Y5V,TP,1608,	SA
5	C117	2402-001042	C-AL,SMD	100uF,20%,16V,GP,TP,6.6x6.6x5.4mm	SA
5	C118	2203-000189	C-CER,CHIP	100nF,+80-20%,25V,Y5V,TP,1608,	SA
5	C119	2402-000170	C-AL,SMD	1uF,20%,50V,GP,TP,4.3x4.3x5.4,	SA
5	C120	2402-001070	C-AL,SMD	470uF,20%,16V,GP,TP,10x10.2,-	SA
5	C151	2402-001042	C-AL,SMD	100uF,20%,16V,GP,TP,6.6x6.6x5.4mm	SA
5	C152	2402-001081	C-AL,SMD	100uF,20%,25V,WT,TP,8.3x8.3x10	SA
5	C153	2203-000440	C-CER,CHIP	1nF,10%,50V,X7R,TP,1608,-	SA
5	C154	2203-000189	C-CER,CHIP	100nF,+80-20%,25V,Y5V,TP,1608,	SA
5	C155	2203-000189	C-CER,CHIP	100nF,+80-20%,25V,Y5V,TP,1608,	SA
5	C156	2402-001042	C-AL,SMD	100uF,20%,16V,GP,TP,6.6x6.6x5.4mm	SA
5	C157	2203-000189	C-CER,CHIP	100nF,+80-20%,25V,Y5V,TP,1608,	SA
5	C201	2203-000552	C-CER,CHIP	0.02NF,5%,50V,C0G,TP,1608	SA
5	C202	2203-000552	C-CER,CHIP	0.02NF,5%,50V,C0G,TP,1608	SA
5	C203	2203-005005	C-CER,CHIP	100nF,10%,16V,X7R,TP,1608	SA
5	C204	2402-000179	C-AL,SMD	47uF,20%,16V,GP,TP,6.6x6.6x5.4	SA
5	C205	2203-000236	C-CER,CHIP	0.1NF,5%,50V,C0G,TP,1608	SA
5	C206	2203-005005	C-CER,CHIP	100nF,10%,16V,X7R,TP,1608	SA
5	C207	2203-005005	C-CER,CHIP	100nF,10%,16V,X7R,TP,1608	SA
5	C208	2402-001042	C-AL,SMD	100uF,20%,16V,GP,TP,6.6x6.6x5.4mm	SA
5	C209	2203-000189	C-CER,CHIP	100nF,+80-20%,25V,Y5V,TP,1608,	SA
5	C210	2203-000257	C-CER,CHIP	10nF,10%,50V,X7R,TP,1608	SA
5	C211	2203-005005	C-CER,CHIP	100nF,10%,16V,X7R,TP,1608	SA

Level	Loc. No.	Code No.	Description	Specification	Remarks
5	C212	2203-000189	C-CER,CHIP	100nF,+80-20%,25V,Y5V,TP,1608,	SA
5	C213	2203-005005	C-CER,CHIP	100nF,10%,16V,X7R,TP,1608	SA
5	C214	2203-005005	C-CER,CHIP	100nF,10%,16V,X7R,TP,1608	SA
5	C215	2402-001042	C-AL,SMD	100uF,20%,16V,GP,TP,6.6x6.6x5.4mm	SA
5	C216	2402-000179	C-AL,SMD	47uF,20%,16V,GP,TP,6.6x6.6x5.4	SA
5	C217	2402-000176	C-AL,SMD	10uF,20%,16V,GP,TP,4.3x4.3x5.4	SA
5	C218	2203-005005	C-CER,CHIP	100nF,10%,16V,X7R,TP,1608	SA
5	C219	2203-005005	C-CER,CHIP	100nF,10%,16V,X7R,TP,1608	SA
5	C220	2203-000357	C-CER,CHIP	0.15NF,5%,50V,C0G,TP,1608	SA
5	C221	2203-005005	C-CER,CHIP	100nF,10%,16V,X7R,TP,1608	SA
5	C222	2203-005005	C-CER,CHIP	100nF,10%,16V,X7R,TP,1608	SA
5	C401	2203-000552	C-CER,CHIP	0.02NF,5%,50V,C0G,TP,1608	SA
5	C402	2203-000552	C-CER,CHIP	0.02NF,5%,50V,C0G,TP,1608	SA
5	C403	2203-000236	C-CER,CHIP	0.1NF,5%,50V,C0G,TP,1608	SA
5	C404	2203-000236	C-CER,CHIP	0.1NF,5%,50V,C0G,TP,1608	SA
5	C405	2203-000815	C-CER,CHIP	0.033NF,5%,50V,C0G,TP,1608	SA
5	C406	2203-000815	C-CER,CHIP	0.033NF,5%,50V,C0G,TP,1608	SA
5	C407	2203-000815	C-CER,CHIP	0.033NF,5%,50V,C0G,TP,1608	SA
5	C408	2203-005005	C-CER,CHIP	100nF,10%,16V,X7R,TP,1608	SA
5	C409	2402-000135	C-AL,SMD	22uF,20%,16V,GP,TP,5.3x5.3x5.4	SA
5	C410	2203-005005	C-CER,CHIP	100nF,10%,16V,X7R,TP,1608	SA
5	C411	2402-000135	C-AL,SMD	22uF,20%,16V,GP,TP,5.3x5.3x5.4	SA
5	C412	2203-005005	C-CER,CHIP	100nF,10%,16V,X7R,TP,1608	SA
5	C413	2402-000135	C-AL,SMD	22uF,20%,16V,GP,TP,5.3x5.3x5.4	SA
5	C414	2203-005005	C-CER,CHIP	100nF,10%,16V,X7R,TP,1608	SA
5	C415	2402-000135	C-AL,SMD	22uF,20%,16V,GP,TP,5.3x5.3x5.4	SA
5	C416	2203-005005	C-CER,CHIP	100nF,10%,16V,X7R,TP,1608	SA
5	C417	2402-000135	C-AL,SMD	22uF,20%,16V,GP,TP,5.3x5.3x5.4	SA
5	C418	2203-005005	C-CER,CHIP	100nF,10%,16V,X7R,TP,1608	SA
5	C419	2402-000135	C-AL,SMD	22uF,20%,16V,GP,TP,5.3x5.3x5.4	SA
5	C420	2402-000176	C-AL,SMD	10uF,20%,16V,GP,TP,4.3x4.3x5.4	SA
5	C421	2203-005005	C-CER,CHIP	100nF,10%,16V,X7R,TP,1608	SA
5	C422	2203-005005	C-CER,CHIP	100nF,10%,16V,X7R,TP,1608	SA
5	C423	2402-000176	C-AL,SMD	10uF,20%,16V,GP,TP,4.3x4.3x5.4	SA
5	C431	2203-000236	C-CER,CHIP	0.1NF,5%,50V,C0G,TP,1608	SA
5	C432	2402-000135	C-AL,SMD	22uF,20%,16V,GP,TP,5.3x5.3x5.4	SA
5	C433	2203-000236	C-CER,CHIP	0.1NF,5%,50V,C0G,TP,1608	SA
5	C434	2402-000135	C-AL,SMD	22uF,20%,16V,GP,TP,5.3x5.3x5.4	SA
5	C435	2203-005005	C-CER,CHIP	100nF,10%,16V,X7R,TP,1608	SA
5	C436	2203-000236	C-CER,CHIP	0.1NF,5%,50V,C0G,TP,1608	SA
5	C437	2203-005005	C-CER,CHIP	100nF,10%,16V,X7R,TP,1608	SA
5	C438	2203-000236	C-CER,CHIP	0.1NF,5%,50V,C0G,TP,1608	SA
5	C439	2203-000236	C-CER,CHIP	0.1NF,5%,50V,C0G,TP,1608	SA
5	C440	2203-005005	C-CER,CHIP	100nF,10%,16V,X7R,TP,1608	SA
5	C441	2203-006017	C-CER,CHIP	0.56NF,5%,50V,C0G,TP,1608	SA
5	C442	2203-006017	C-CER,CHIP	0.56NF,5%,50V,C0G,TP,1608	SA
5	C443	2203-005065	C-CER,CHIP	1000nF,+80-20%,10V,Y5V,TP,1608	SA
5	C444	2203-005065	C-CER,CHIP	1000nF,+80-20%,10V,Y5V,TP,1608	SA
5	C445	2402-000135	C-AL,SMD	22uF,20%,16V,GP,TP,5.3x5.3x5.4	SA
5	C446	2402-000135	C-AL,SMD	22uF,20%,16V,GP,TP,5.3x5.3x5.4	SA
5	C447	2203-000236	C-CER,CHIP	0.1NF,5%,50V,C0G,TP,1608	SA
5	C448	2402-001042	C-AL,SMD	100uF,20%,16V,GP,TP,6.6x6.6x5.4mm	SA
5	C449	2402-000135	C-AL,SMD	22uF,20%,16V,GP,TP,5.3x5.3x5.4	SA
5	C450	2402-001042	C-AL,SMD	100uF,20%,16V,GP,TP,6.6x6.6x5.4mm	SA
5	C451	2203-005005	C-CER,CHIP	100nF,10%,16V,X7R,TP,1608	SA
5	C452	2402-000135	C-AL,SMD	22uF,20%,16V,GP,TP,5.3x5.3x5.4	SA
5	C453	2402-000135	C-AL,SMD	22uF,20%,16V,GP,TP,5.3x5.3x5.4	SA
5	C454	2402-000135	C-AL,SMD	22uF,20%,16V,GP,TP,5.3x5.3x5.4	SA
5	C455	2402-000135	C-AL,SMD	22uF,20%,16V,GP,TP,5.3x5.3x5.4	SA
5	C456	2402-000135	C-AL,SMD	22uF,20%,16V,GP,TP,5.3x5.3x5.4	SA
5	C457	2402-000135	C-AL,SMD	22uF,20%,16V,GP,TP,5.3x5.3x5.4	SA
5	C458	2402-000135	C-AL,SMD	22uF,20%,16V,GP,TP,5.3x5.3x5.4	SA
5	C459	2203-000236	C-CER,CHIP	0.1NF,5%,50V,C0G,TP,1608	SA
5	C460	2203-000236	C-CER,CHIP	0.1NF,5%,50V,C0G,TP,1608	SA
5	C461	2203-000236	C-CER,CHIP	0.1NF,5%,50V,C0G,TP,1608	SA
5	C463	2203-000236	C-CER,CHIP	0.1NF,5%,50V,C0G,TP,1608	SA
5	C464	2203-000236	C-CER,CHIP	0.1NF,5%,50V,C0G,TP,1608	SA

Level	Loc. No.	Code No.	Description	Specification	Remarks
5	C465	2203-000815	C-CER,CHIP	0.033NF,5%,50V,COG,TP,1608	SA
5	C466	2402-000176	C-AL,SMD	10uF,20%,16V,GP,TP,4.3x4.3x5.4	SA
5	C467	2402-000179	C-AL,SMD	47uF,20%,16V,GP,TP,6.6x6.6x5.4	SA
5	C501	2402-000179	C-AL,SMD	47uF,20%,16V,GP,TP,6.6x6.6x5.4	SA
5	C502	2203-000972	C-CER,CHIP	47nF,10%,16V,X7R,TP,1608	SA
5	C503	2203-001071	C-CER,CHIP	0.056NF,5%,50V,COG,TP,1608	SA
5	C504	2203-001656	C-CER,CHIP	0.47nF,5%,50V,NP0,TP,1608	SA
5	C505	2203-000140	C-CER,CHIP	1.5nF,10%,50V,X7R,TP,1608,-	SA
5	C506	2402-001042	C-AL,SMD	100uF,20%,16V,GP,TP,6.6x6.6x5.4mm	SA
5	C507	2203-001071	C-CER,CHIP	0.056NF,5%,50V,COG,TP,1608	SA
5	C508	2203-001071	C-CER,CHIP	0.056NF,5%,50V,COG,TP,1608	SA
5	C509	2203-000872	C-CER,CHIP	0.003NF,0.25PF,50V,COG,TP,1608	SA
5	C510	2203-000872	C-CER,CHIP	0.003NF,0.25PF,50V,COG,TP,1608	SA
5	C512	2203-000189	C-CER,CHIP	100nF,+80-20%,25V,Y5V,TP,1608,	SA
5	C513	2402-000176	C-AL,SMD	10uF,20%,16V,GP,TP,4.3x4.3x5.4	SA
5	C514	2203-005005	C-CER,CHIP	100nF,10%,16V,X7R,TP,1608	SA
5	C515	2402-000176	C-AL,SMD	10uF,20%,16V,GP,TP,4.3x4.3x5.4	SA
5	C516	2203-000440	C-CER,CHIP	1nF,10%,50V,X7R,TP,1608,-	SA
5	C517	2203-000440	C-CER,CHIP	1nF,10%,50V,X7R,TP,1608,-	SA
5	C522	2402-000176	C-AL,SMD	10uF,20%,16V,GP,TP,4.3x4.3x5.4	SA
5	C523	2402-000176	C-AL,SMD	10uF,20%,16V,GP,TP,4.3x4.3x5.4	SA
5	C524	2203-001656	C-CER,CHIP	0.47nF,5%,50V,NP0,TP,1608	SA
5	C525	2203-000140	C-CER,CHIP	1.5nF,10%,50V,X7R,TP,1608,-	SA
5	C526	2402-001042	C-AL,SMD	100uF,20%,16V,GP,TP,6.6x6.6x5.4mm	SA
5	C527	2203-005005	C-CER,CHIP	100nF,10%,16V,X7R,TP,1608	SA
5	C528	2402-000173	C-AL,SMD	4.7uF,20%,35V,GP,TP,4.3x4.3x5.	SA
5	C529	2402-000173	C-AL,SMD	4.7uF,20%,35V,GP,TP,4.3x4.3x5.	SA
5	C530	2402-000173	C-AL,SMD	4.7uF,20%,35V,GP,TP,4.3x4.3x5.	SA
5	C531	2402-000173	C-AL,SMD	4.7uF,20%,35V,GP,TP,4.3x4.3x5.	SA
5	C532	2402-000173	C-AL,SMD	4.7uF,20%,35V,GP,TP,4.3x4.3x5.	SA
5	C533	2402-000176	C-AL,SMD	10uF,20%,16V,GP,TP,4.3x4.3x5.4	SA
5	C534	2203-000189	C-CER,CHIP	100nF,+80-20%,25V,Y5V,TP,1608,	SA
5	C601	2203-005065	C-CER,CHIP	1000nF,+80-20%,10V,Y5V,TP,1608	SA
5	C602	2203-005065	C-CER,CHIP	1000nF,+80-20%,10V,Y5V,TP,1608	SA
5	C603	2203-000491	C-CER,CHIP	2.2nF,10%,50V,X7R,TP,1608,-	SA
5	C604	2203-000491	C-CER,CHIP	2.2nF,10%,50V,X7R,TP,1608,-	SA
5	C605	2203-000189	C-CER,CHIP	100nF,+80-20%,25V,Y5V,TP,1608,	SA
5	C606	2402-001042	C-AL,SMD	100uF,20%,16V,GP,TP,6.6x6.6x5.4mm	SA
5	C607	2402-001042	C-AL,SMD	100uF,20%,16V,GP,TP,6.6x6.6x5.4mm	SA
5	C608	2402-001042	C-AL,SMD	100uF,20%,16V,GP,TP,6.6x6.6x5.4mm	SA
5	C609	2402-001042	C-AL,SMD	100uF,20%,16V,GP,TP,6.6x6.6x5.4mm	SA
5	C610	2402-000135	C-AL,SMD	22uF,20%,16V,GP,TP,5.3x5.3x5.4	SA
5	C651	2203-001402	C-CER,CHIP	220nF,+80-20%,16V,Y5V,TP,1608	SA
5	C652	2203-001402	C-CER,CHIP	220nF,+80-20%,16V,Y5V,TP,1608	SA
5	C653	2203-000189	C-CER,CHIP	100nF,+80-20%,25V,Y5V,TP,1608,	SA
5	C654	2402-001081	C-AL,SMD	100uF,20%,25V,WT,TP,8.3x8.3x10	SA
5	C655	2203-001652	C-CER,CHIP	470nF,+80-20%,16V,Y5V,TP,1608	SA
5	C656	2203-001402	C-CER,CHIP	220nF,+80-20%,16V,Y5V,TP,1608	SA
5	C657	2203-001402	C-CER,CHIP	220nF,+80-20%,16V,Y5V,TP,1608	SA
5	C658	2203-000189	C-CER,CHIP	100nF,+80-20%,25V,Y5V,TP,1608,	SA
5	C659	2203-001652	C-CER,CHIP	470nF,+80-20%,16V,Y5V,TP,1608	SA
5	C660	2203-000189	C-CER,CHIP	100nF,+80-20%,25V,Y5V,TP,1608,	SA
5	C661	2203-001402	C-CER,CHIP	220nF,+80-20%,16V,Y5V,TP,1608	SA
5	C662	2203-001402	C-CER,CHIP	220nF,+80-20%,16V,Y5V,TP,1608	SA
5	C701	2402-001042	C-AL,SMD	100uF,20%,16V,GP,TP,6.6x6.6x5.4mm	SA
5	C702	2203-000257	C-CER,CHIP	10nF,10%,50V,X7R,TP,1608	SA
5	C703	2203-000972	C-CER,CHIP	47nF,10%,16V,X7R,TP,1608	SA
5	C704	2203-001607	C-CER,CHIP	0.22nF,5%,50V,NP0,TP,1608	SA
5	C705	2203-000888	C-CER,CHIP	4.7nF,10%,50V,X7R,TP,1608	SA
5	C706	2203-000491	C-CER,CHIP	2.2nF,10%,50V,X7R,TP,1608,-	SA
5	C707	2203-000257	C-CER,CHIP	10nF,10%,50V,X7R,TP,1608	SA
5	C708	2402-001070	C-AL,SMD	470uF,20%,16V,GP,TP,10x10.2,-	SA
5	C709	2203-000236	C-CER,CHIP	0.1NF,5%,50V,COG,TP,1608	SA
5	C710	2203-000189	C-CER,CHIP	100nF,+80-20%,25V,Y5V,TP,1608,	SA
5	C711	2402-001145	C-AL,CHIP	47UF,20%,50V,GP,TP,6.3X7.7MM	SA
5	C712	2203-000189	C-CER,CHIP	100nF,+80-20%,25V,Y5V,TP,1608,	SA
5	C801	2203-000280	C-CER,CHIP	0.01NF,0.5PF,50V,COG,TP,1608	SA

Level	Loc. No.	Code No.	Description	Specification	Remarks
5	C802	2203-000626	C-CER,CHIP	0.022NF,5%,50V,C0G,TP,1608	SA
5	C803	2203-000626	C-CER,CHIP	0.022NF,5%,50V,C0G,TP,1608	SA
5	C804	2203-000626	C-CER,CHIP	0.022NF,5%,50V,C0G,TP,1608	SA
5	C805	2203-000189	C-CER,CHIP	100nF,+80-20%,25V,Y5V,TP,1608,	SA
5	C806	2203-000236	C-CER,CHIP	0.1NF,5%,50V,C0G,TP,1608	SA
5	C809	2402-001042	C-AL,SMD	100uF,20%,16V,GP,TP,6.6x6.6x5.4mm	SA
5	C810	2203-000440	C-CER,CHIP	1nF,10%,50V,X7R,TP,1608,-	SA
5	C815	2402-001042	C-AL,SMD	100uF,20%,16V,GP,TP,6.6x6.6x5.4mm	SA
5	C816	2203-000189	C-CER,CHIP	100nF,+80-20%,25V,Y5V,TP,1608,	SA
5	C901	2203-000815	C-CER,CHIP	0.033NF,5%,50V,C0G,TP,1608	SA
5	C902	2203-000815	C-CER,CHIP	0.033NF,5%,50V,C0G,TP,1608	SA
5	C903	2203-000236	C-CER,CHIP	0.1NF,5%,50V,C0G,TP,1608	SA
5	C904	2203-000236	C-CER,CHIP	0.1NF,5%,50V,C0G,TP,1608	SA
5	C921	2203-000189	C-CER,CHIP	100nF,+80-20%,25V,Y5V,TP,1608,	SA
5	C922	2203-000189	C-CER,CHIP	100nF,+80-20%,25V,Y5V,TP,1608,	SA
5	C923	2203-000189	C-CER,CHIP	100nF,+80-20%,25V,Y5V,TP,1608,	SA
5	C924	2402-000179	C-AL,SMD	47uF,20%,16V,GP,TP,6.6x6.6x5.4	SA
5	C935	2203-000257	C-CER,CHIP	10nF,10%,50V,X7R,TP,1608	SA
5	C936	2402-000176	C-AL,SMD	10uF,20%,16V,GP,TP,4.3x4.3x5.4	SA
5	C937	2203-000257	C-CER,CHIP	10nF,10%,50V,X7R,TP,1608	SA
5	C938	2402-000176	C-AL,SMD	10uF,20%,16V,GP,TP,4.3x4.3x5.4	SA
5	C939	2203-000257	C-CER,CHIP	10nF,10%,50V,X7R,TP,1608	SA
5	C940	2402-000176	C-AL,SMD	10uF,20%,16V,GP,TP,4.3x4.3x5.4	SA
5	C941	2203-000257	C-CER,CHIP	10nF,10%,50V,X7R,TP,1608	SA
5	C942	2402-000176	C-AL,SMD	10uF,20%,16V,GP,TP,4.3x4.3x5.4	SA
5	C943	2203-000257	C-CER,CHIP	10nF,10%,50V,X7R,TP,1608	SA
5	C944	2402-000176	C-AL,SMD	10uF,20%,16V,GP,TP,4.3x4.3x5.4	SA
5	C945	2203-000257	C-CER,CHIP	10nF,10%,50V,X7R,TP,1608	SA
5	C946	2402-000176	C-AL,SMD	10uF,20%,16V,GP,TP,4.3x4.3x5.4	SA
5	C947	2203-001402	C-CER,CHIP	220nF,+80-20%,16V,Y5V,TP,1608	SA
5	C948	2203-001402	C-CER,CHIP	220nF,+80-20%,16V,Y5V,TP,1608	SA
5	C949	2203-001402	C-CER,CHIP	220nF,+80-20%,16V,Y5V,TP,1608	SA
5	C950	2203-000280	C-CER,CHIP	0.01NF,0.5PF,50V,C0G,TP,1608	SA
5	C951	2203-000280	C-CER,CHIP	0.01NF,0.5PF,50V,C0G,TP,1608	SA
5	C952	2203-000280	C-CER,CHIP	0.01NF,0.5PF,50V,C0G,TP,1608	SA
5	C953	2203-000189	C-CER,CHIP	100nF,+80-20%,25V,Y5V,TP,1608,	SA
5	C954	2402-000176	C-AL,SMD	10uF,20%,16V,GP,TP,4.3x4.3x5.4	SA
5	C955	2203-000280	C-CER,CHIP	0.01NF,0.5PF,50V,C0G,TP,1608	SA
5	C956	2203-000280	C-CER,CHIP	0.01NF,0.5PF,50V,C0G,TP,1608	SA
5	C957	2402-000135	C-AL,SMD	22uF,20%,16V,GP,TP,5.3x5.3x5.4	SA
5	C958	2402-000135	C-AL,SMD	22uF,20%,16V,GP,TP,5.3x5.3x5.4	SA
5	C959	2402-000135	C-AL,SMD	22uF,20%,16V,GP,TP,5.3x5.3x5.4	SA
5	C960	2203-000236	C-CER,CHIP	0.1NF,5%,50V,C0G,TP,1608	SA
5	C961	2203-000236	C-CER,CHIP	0.1NF,5%,50V,C0G,TP,1608	SA
5	C962	2203-000236	C-CER,CHIP	0.1NF,5%,50V,C0G,TP,1608	SA
5	C963	2203-000815	C-CER,CHIP	0.033NF,5%,50V,C0G,TP,1608	SA
5	C964	2203-000815	C-CER,CHIP	0.033NF,5%,50V,C0G,TP,1608	SA
5	C965	2203-000815	C-CER,CHIP	0.033NF,5%,50V,C0G,TP,1608	SA
5	CA801	2503-001018	C-NETWORK	15PFX4,10%,50V,-	SA
5	CA802	2503-001018	C-NETWORK	15PFX4,10%,50V,-	SA
5	CA803	2503-001018	C-NETWORK	15PFX4,10%,50V,-	SA
5	CA804	2503-001018	C-NETWORK	15PFX4,10%,50V,-	SA
5	CA805	2503-001018	C-NETWORK	15PFX4,10%,50V,-	SA
5	CA806	2503-001018	C-NETWORK	15PFX4,10%,50V,-	SA
5	CIS5	0202-001162	SOLDER-CREAM	RMA-20-21L,S63,-,SN63/PB36.6/AG0.4,FLUX9.5%	SNA
5	CN201	3711-002046	CONNECTOR-HEADER	BOX,12P,1R,1.25MM,SMD-S,SN,WHT	SA
5	CN202	3704-000249	SOCKET-IC	32P,PLCC,SN,1.27mm	SA
5	CN651	3711-005291	CONNECTOR-HEADER	BOX,2P,1R,2MM,SMD-A,SN,WHT	SA
5	CN652	3711-005292	CONNECTOR-HEADER	BOX,3P,1R,2MM,SMD-A,SN,WHT	SA
5	CN802	3708-001622	CONNECTOR-FPC/FFC/PIC	50P,0.5MM,SMD-A,SN,ZIF,FLIP,BOTTOM	SA
5	CN921	3711-000556	CONNECTOR-HEADER	BOX,12P,1R,1.25mm,SMD-A,SN	SA
5	D151	0402-000553	DIODE-RECTIFIER	SS24,40V,2.0A,DO-214AA	SA
5	D201	0401-001056	DIODE-SWITCHING	MMBD4148SE,75V,200MA,SOT-23,TP	SA
5	D202	0403-000579	DIODE-ZENER	BZX84C5V1,5.1V,5%,200mW,SOT-23	SA
5	D203	0403-000579	DIODE-ZENER	BZX84C5V1,5.1V,5%,200mW,SOT-23	SA
5	D204	0403-000579	DIODE-ZENER	BZX84C5V1,5.1V,5%,200mW,SOT-23	SA
5	D205	0401-001056	DIODE-SWITCHING	MMBD4148SE,75V,200MA,SOT-23,TP	SA

Level	Loc. No.	Code No.	Description	Specification	Remarks
5	D401	0401-001056	DIODE-SWITCHING	MMBD4148SE,75V,200MA,SOT-23,TP	SA
5	D501	0403-001052	DIODE-ZENER	RD8.2MB,8.2V,7.7-8.64V,200mW,S	SA
5	D502	0403-001052	DIODE-ZENER	RD8.2MB,8.2V,7.7-8.64V,200mW,S	SA
5	D503	0403-001052	DIODE-ZENER	RD8.2MB,8.2V,7.7-8.64V,200mW,S	SA
5	D504	0403-001052	DIODE-ZENER	RD8.2MB,8.2V,7.7-8.64V,200mW,S	SA
5	D505	0403-001052	DIODE-ZENER	RD8.2MB,8.2V,7.7-8.64V,200mW,S	SA
5	D506	0403-001052	DIODE-ZENER	RD8.2MB,8.2V,7.7-8.64V,200mW,S	SA
5	D551	0401-001056	DIODE-SWITCHING	MMBD4148SE,75V,200MA,SOT-23,TP	SA
5	D601	0403-001435	DIODE-ZENER	QZX363C5V6,5.32-5.88,200MW,SOT-363,TP	SA
5	D602	0403-001052	DIODE-ZENER	RD8.2MB,8.2V,7.7-8.64V,200mW,S	SA
5	D604	0403-001052	DIODE-ZENER	RD8.2MB,8.2V,7.7-8.64V,200mW,S	SA
5	D701	0401-001056	DIODE-SWITCHING	MMBD4148SE,75V,200MA,SOT-23,TP	SA
5	D702	0403-001425	DIODE-ZENER	BZX84C33,31.0-35.0V,350MW,SOT-23,TP	SA
5	D901	0403-001052	DIODE-ZENER	RD8.2MB,8.2V,7.7-8.64V,200mW,S	SA
5	D902	0403-001052	DIODE-ZENER	RD8.2MB,8.2V,7.7-8.64V,200mW,S	SA
5	D903	0403-000579	DIODE-ZENER	BZX84C5V1,5.1V,5%,200mW,SOT-23	SA
5	D912	0403-001052	DIODE-ZENER	RD8.2MB,8.2V,7.7-8.64V,200mW,S	SA
5	D921	0401-001056	DIODE-SWITCHING	MMBD4148SE,75V,200MA,SOT-23,TP	SA
5	D922	0407-000123	DIODE-ARRAY	DAN202K,80V,100MA,CA2-3,SOT-23,TP	SA
5	D923	0403-001052	DIODE-ZENER	RD8.2MB,8.2V,7.7-8.64V,200mW,S	SA
5	D924	0403-001052	DIODE-ZENER	RD8.2MB,8.2V,7.7-8.64V,200mW,S	SA
5	D925	0403-001052	DIODE-ZENER	RD8.2MB,8.2V,7.7-8.64V,200mW,S	SA
5	D926	0403-001052	DIODE-ZENER	RD8.2MB,8.2V,7.7-8.64V,200mW,S	SA
5	D927	0401-001056	DIODE-SWITCHING	MMBD4148SE,75V,200MA,SOT-23,TP	SA
5	D928	0401-001056	DIODE-SWITCHING	MMBD4148SE,75V,200MA,SOT-23,TP	SA
5	D929	0401-001056	DIODE-SWITCHING	MMBD4148SE,75V,200MA,SOT-23,TP	SA
5	FT101	3301-001145	BEAD-SMD	4.5x1.6x1.6mm,-,-	SNA
5	FT102	3301-001145	BEAD-SMD	4.5x1.6x1.6mm,-,-	SNA
5	FT103	3301-001145	BEAD-SMD	4.5x1.6x1.6mm,-,-	SNA
5	FT104	3301-001145	BEAD-SMD	4.5x1.6x1.6mm,-,-	SNA
5	FT107	3301-001145	BEAD-SMD	4.5x1.6x1.6mm,-,-	SNA
5	FT108	3301-001145	BEAD-SMD	4.5x1.6x1.6mm,-,-	SNA
5	FT109	3301-001145	BEAD-SMD	4.5x1.6x1.6mm,-,-	SNA
5	FT110	3301-001145	BEAD-SMD	4.5x1.6x1.6mm,-,-	SNA
5	FT111	3301-001145	BEAD-SMD	4.5x1.6x1.6mm,-,-	SNA
5	FT151	2901-001114	FILTER-EMI SMD	25VDC,2.0ADC,-,100nF,3.2x1.6x1	SA
5	FT152	3301-001145	BEAD-SMD	4.5x1.6x1.6mm,-,-	SNA
5	FT153	3301-001145	BEAD-SMD	4.5x1.6x1.6mm,-,-	SNA
5	FT154	3301-001145	BEAD-SMD	4.5x1.6x1.6mm,-,-	SNA
5	FT155	3301-001145	BEAD-SMD	4.5x1.6x1.6mm,-,-	SNA
5	FT401	3301-001145	BEAD-SMD	4.5x1.6x1.6mm,-,-	SNA
5	FT402	3301-001145	BEAD-SMD	4.5x1.6x1.6mm,-,-	SNA
5	FT403	3301-001145	BEAD-SMD	4.5x1.6x1.6mm,-,-	SNA
5	FT404	3301-001145	BEAD-SMD	4.5x1.6x1.6mm,-,-	SNA
5	FT801	2901-001114	FILTER-EMI SMD	25VDC,2.0ADC,-,100nF,3.2x1.6x1	SA
5	FT805	2901-001114	FILTER-EMI SMD	25VDC,2.0ADC,-,100nF,3.2x1.6x1	SA
5	FT806	3301-001145	BEAD-SMD	4.5x1.6x1.6mm,-,-	SNA
5	IC101	1203-002425	IC-POSI.FIXED REG.	AP1117,SOT-223,3P,138MIL,PLASTIC,3.3V,-,0TO+150C,1A,-,TP	SA
5	IC102	1203-002708	IC-VOLTAGE REGULATOR	1085,TO-263,3P,340MIL,PLASTIC,3.27/3.33V,-,40TO+125C,3A,-,TP	SA
5	IC103	0505-001170	FET-SILICON	SI9933ADY-T1,P,-20V,3.4A,0.06ohm,2W,SO-8	SA
5	IC104	1203-002945	IC-POSI.FIXED REG.	AP1117E25A,SOT-223,3P,6.5X3.5MM,PLASTIC,2.45/2.55V,-,0 TO+150C,1A,1.225/1.275,TP	SA
5	IC105	1203-001816	IC-POSI.FIXED REG.	78M08,TO-252,3P,-,PLASTIC,7.7/8.3V,1.0W,-40TO+85C,0.5A,-,TP	SA
5	IC106	1203-002328	IC-POSI.FIXED REG.	1086,TO-263,3P,340MIL,PLASTIC,2.475/2.525V,15W,0TO+125C,-,1.238/1.262V,TP	SA
5	IC108	0505-001170	FET-SILICON	SI9933ADY-T1,P,-20V,3.4A,0.06ohm,2W,SO-8	SA
5	IC151	1203-001448	IC-SWITCH VOL REG	2596,TO-263,5P,-,PLASTIC,4.750/5.250V,-,40TO+125C,3A,-,ST	SA
5	IC152	1203-002945	IC-POSI.FIXED REG.	AP1117E25A,SOT-223,3P,6.5X3.5MM,PLASTIC,2.45/2.55V,-,0 TO+150C,1A,1.225/1.275,TP	SA
5	IC201	1204-001912	IC-DECODER	SDA5550M,P-MQFP,100P,-,PLASTIC,3.3V,1.5W,0TO+70C,TR,-	SA
5	IC203	1103-000138	IC-EEPROM	24C16,2Kx8BIT,SOP,8P,150MIL,10	SA
5	IC204	1001-001109	IC-ANALOG SWITCH	FST3125M,BUS SWITCH & CMOS,SOIC,17P,150MIL,QUAD,7V,-40TO+85C,PLASTIC,-,4.00HM,5.	SA
5	IC205	1203-001212	IC-VOL. DETECTOR	7029,SOT-89,3P,-,PLASTIC,-,500	SA
5	IC206	1001-001109	IC-ANALOG SWITCH	FST3125M,BUS SWITCH & CMOS,SOIC,17P,150MIL,QUAD,7V,-40TO+85C,PLASTIC,-,4.00HM,5.	SA
5	IC207	1001-001082	IC-VIDEO SWITCH	BA7657F,-,SOP,24P,300MIL,SINGL	SA
5	IC401	1204-002144	IC-VIDEO PROCESS	PANELTV-3DPRO,BGA,320P,27X27MM,PLASTIC,4V,-,0TO+70C,TR,-	SA
5	IC402	1105-001336	IC-DRAM	4S643232,512Kx32x4Bit,TSOP,86P,400MIL,60nS,3.3V,10% PLASTIC,0to+70C,2mA,CMOS,TP	SA
5	IC403	1105-001336	IC-DRAM	4S643232,512Kx32x4Bit,TSOP,86P,400MIL,60nS,3.3V,10% PLASTIC,0to+70C,2mA,CMOS,TP	SA
5	IC501	1204-001711	IC-SOUND PROCESSOR	MSP3425G,QFP,80P,-,PLASTIC,9V,1000mW,0to+70C,TR,Multistandard Sound	SA
5	IC601	1201-001495	IC-AUDIO AMP	7050,SOP,8P,150MIL,DUAL,26DB,PLASTIC,6V,0.25W,-,40DB,-,-,20NA,-	SA

Level	Loc. No.	Code No.	Description	Specification	Remarks
5	IC651	1201-001980	IC-AUDIO AMP	TDA7266D,S0,20P,16X11.1MM,-,26DB,PLASTIC,12V,25W,0TO+70C,,,,,TP	SA
5	IC802	1203-001488	IC-POS.FIXED REG.	7805,T0-252,3P,-,PLASTIC,4.8/5	SA
5	L201	2703-002327	INDUCTOR-SMD	3.9uH,0.05,3225	SA
5	L202	2703-002327	INDUCTOR-SMD	3.9uH,0.05,3225	SA
5	L203	2703-000412	INDUCTOR-SMD	8.2uH,5%,3225	SA
5	L402	2703-002327	INDUCTOR-SMD	3.9uH,0.05,3225	SA
5	L403	2703-002327	INDUCTOR-SMD	3.9uH,0.05,3225	SA
5	L404	2703-002327	INDUCTOR-SMD	3.9uH,0.05,3225	SA
5	L405	2703-002327	INDUCTOR-SMD	3.9uH,0.05,3225	SA
5	L406	2703-002327	INDUCTOR-SMD	3.9uH,0.05,3225	SA
5	L407	2703-002327	INDUCTOR-SMD	3.9uH,0.05,3225	SA
5	L408	2703-002327	INDUCTOR-SMD	3.9uH,0.05,3225	SA
5	L409	2703-002327	INDUCTOR-SMD	3.9uH,0.05,3225	SA
5	L410	2703-002327	INDUCTOR-SMD	3.9uH,0.05,3225	SA
5	L411	2703-002327	INDUCTOR-SMD	3.9uH,0.05,3225	SA
5	L501	2703-002327	INDUCTOR-SMD	3.9uH,0.05,3225	SA
5	L502	2703-002327	INDUCTOR-SMD	3.9uH,0.05,3225	SA
5	L503	2703-002327	INDUCTOR-SMD	3.9uH,0.05,3225	SA
5	L701	2703-002327	INDUCTOR-SMD	3.9uH,0.05,3225	SA
5	L702	2703-000417	INDUCTOR-SMD	220uH,0.05,3225	SA
5	L703	2703-001426	INDUCTOR-SMD	680uH,20%,7070	SA
5	L704	2703-002327	INDUCTOR-SMD	3.9uH,0.05,3225	SA
5	L705	2703-002327	INDUCTOR-SMD	3.9uH,0.05,3225	SA
5	L707	2703-002327	INDUCTOR-SMD	3.9uH,0.05,3225	SA
5	L904	2703-001778	INDUCTOR-SMD	3.3uH,20%,3225	SA
5	LP151	BN27-20001A	COIL-CHOKE	-.53.0UH,20%,DR10*5,,,,,0.18ohm,,,,,TRAY	SA
5	MP1.0	BN41-00359A	PCB MAIN	MU20U0,4,1.6,160*180	SNA
5	NT_K_U	3301-001145	BEAD-SMD	4.5x1.6x1.6mm,-,-	SNA
5	Q101	0501-002080	TR-SMALL SIGNAL	2SC2412K,NPN,200mW,SC-59,TP,120-270	SA
5	Q102	0501-002080	TR-SMALL SIGNAL	2SC2412K,NPN,200mW,SC-59,TP,120-270	SA
5	Q103	0501-002080	TR-SMALL SIGNAL	2SC2412K,NPN,200mW,SC-59,TP,120-270	SA
5	Q201	0501-000342	TR-SMALL SIGNAL	KSC1623-Y,NPN,200mW,SOT-23,TP,135-270	SA
5	Q203	0501-000342	TR-SMALL SIGNAL	KSC1623-Y,NPN,200mW,SOT-23,TP,135-270	SA
5	Q401	0501-000342	TR-SMALL SIGNAL	KSC1623-Y,NPN,200mW,SOT-23,TP,135-270	SA
5	Q402	0501-000002	TR-SMALL SIGNAL	KSA812,PNP,150mW,SOT-23,TP,130-270	SA
5	Q403	0501-000342	TR-SMALL SIGNAL	KSC1623-Y,NPN,200mW,SOT-23,TP,135-270	SA
5	Q551	0501-000342	TR-SMALL SIGNAL	KSC1623-Y,NPN,200mW,SOT-23,TP,135-270	SA
5	Q552	0501-000342	TR-SMALL SIGNAL	KSC1623-Y,NPN,200mW,SOT-23,TP,135-270	SA
5	Q601	0501-000342	TR-SMALL SIGNAL	KSC1623-Y,NPN,200mW,SOT-23,TP,135-270	SA
5	Q602	0501-000342	TR-SMALL SIGNAL	KSC1623-Y,NPN,200mW,SOT-23,TP,135-270	SA
5	Q701	0501-000342	TR-SMALL SIGNAL	KSC1623-Y,NPN,200mW,SOT-23,TP,135-270	SA
5	Q921	0501-002080	TR-SMALL SIGNAL	2SC2412K,NPN,200mW,SC-59,TP,120-270	SA
5	Q922	0501-002080	TR-SMALL SIGNAL	2SC2412K,NPN,200mW,SC-59,TP,120-270	SA
5	Q970	0501-002080	TR-SMALL SIGNAL	2SC2412K,NPN,200mW,SC-59,TP,120-270	SA
5	R101	2007-000090	R-CHIP	10Kohm,5%,1/10W,TP,1608	SA
5	R102	2007-000102	R-CHIP	100Kohm,5%,1/10W,TP,1608	SA
5	R103	2007-000102	R-CHIP	100Kohm,5%,1/10W,TP,1608	SA
5	R104	2007-000102	R-CHIP	100Kohm,5%,1/10W,TP,1608	SA
5	R105	2007-000939	R-CHIP	47Kohm,1%,1/10W,TP,1608	SA
5	R106	2007-000102	R-CHIP	100Kohm,5%,1/10W,TP,1608	SA
5	R107	2007-000090	R-CHIP	10Kohm,5%,1/10W,TP,1608	SA
5	R151	2007-001179	R-CHIP	8.2Kohm,5%,1/10W,TP,1608	SA
5	R152	2007-000704	R-CHIP	3.6Kohm,5%,1/10W,TP,1608	SA
5	R153	2007-000084	R-CHIP	4.7Kohm,5%,1/10W,TP,1608	SA
5	R201	2007-001167	R-CHIP	75ohm,5%,1/10W,TP,1608	SA
5	R202	2007-000074	R-CHIP	100ohm,5%,1/10W,TP,1608	SA
5	R203	2007-000074	R-CHIP	100ohm,5%,1/10W,TP,1608	SA
5	R204	2007-000074	R-CHIP	100ohm,5%,1/10W,TP,1608	SA
5	R205	2007-000074	R-CHIP	100ohm,5%,1/10W,TP,1608	SA
5	R206	2007-000074	R-CHIP	100ohm,5%,1/10W,TP,1608	SA
5	R207	2007-000074	R-CHIP	100ohm,5%,1/10W,TP,1608	SA
5	R208	2007-000309	R-CHIP	10ohm,5%,1/10W,TP,1608	SA
5	R209	2007-000074	R-CHIP	100ohm,5%,1/10W,TP,1608	SA
5	R210	2007-000074	R-CHIP	100ohm,5%,1/10W,TP,1608	SA
5	R211	2007-000074	R-CHIP	100ohm,5%,1/10W,TP,1608	SA
5	R212	2007-000074	R-CHIP	100ohm,5%,1/10W,TP,1608	SA
5	R213	2007-000074	R-CHIP	100ohm,5%,1/10W,TP,1608	SA

Level	Loc. No.	Code No.	Description	Specification	Remarks
5	R214	2007-000074	R-CHIP	100ohm,5%,1/10W,TP,1608	SA
5	R215	2007-000084	R-CHIP	4.7Kohm,5%,1/10W,TP,1608	SA
5	R216	2007-000074	R-CHIP	100ohm,5%,1/10W,TP,1608	SA
5	R218	2007-000052	R-CHIP	10Kohm,1%,1/10W,TP,1608	SA
5	R220	2007-000052	R-CHIP	10Kohm,1%,1/10W,TP,1608	SA
5	R221	2007-000075	R-CHIP	220ohm,5%,1/10W,TP,1608	SA
5	R222	2007-000120	R-CHIP	680ohm,5%,1/10W,TP,1608	SA
5	R223	2007-000078	R-CHIP	1Kohm,5%,1/10W,TP,1608	SA
5	R224	2007-000078	R-CHIP	1Kohm,5%,1/10W,TP,1608	SA
5	R226	2007-000090	R-CHIP	10Kohm,5%,1/10W,TP,1608	SA
5	R227	2007-000090	R-CHIP	10Kohm,5%,1/10W,TP,1608	SA
5	R228	2007-000077	R-CHIP	470ohm,5%,1/10W,TP,1608	SA
5	R229	2007-000090	R-CHIP	10Kohm,5%,1/10W,TP,1608	SA
5	R230	2007-000074	R-CHIP	100ohm,5%,1/10W,TP,1608	SA
5	R231	2007-000074	R-CHIP	100ohm,5%,1/10W,TP,1608	SA
5	R232	2007-000074	R-CHIP	100ohm,5%,1/10W,TP,1608	SA
5	R233	2007-000074	R-CHIP	100ohm,5%,1/10W,TP,1608	SA
5	R234	2007-000090	R-CHIP	10Kohm,5%,1/10W,TP,1608	SA
5	R235	2007-000090	R-CHIP	10Kohm,5%,1/10W,TP,1608	SA
5	R236	2007-000084	R-CHIP	4.7Kohm,5%,1/10W,TP,1608	SA
5	R237	2007-000084	R-CHIP	4.7Kohm,5%,1/10W,TP,1608	SA
5	R238	2007-000074	R-CHIP	100ohm,5%,1/10W,TP,1608	SA
5	R239	2007-000074	R-CHIP	100ohm,5%,1/10W,TP,1608	SA
5	R240	2007-000076	R-CHIP	330ohm,5%,1/10W,TP,1608	SA
5	R241	2007-000090	R-CHIP	10Kohm,5%,1/10W,TP,1608	SA
5	R242	2007-000239	R-CHIP	1.5Kohm,1%,1/10W,TP,1608	SA
5	R243	2007-000239	R-CHIP	1.5Kohm,1%,1/10W,TP,1608	SA
5	R244	2007-000078	R-CHIP	1Kohm,5%,1/10W,TP,1608	SA
5	R246	2007-000074	R-CHIP	100ohm,5%,1/10W,TP,1608	SA
5	R247	2007-000074	R-CHIP	100ohm,5%,1/10W,TP,1608	SA
5	R248	2007-000090	R-CHIP	10Kohm,5%,1/10W,TP,1608	SA
5	R249	2007-000077	R-CHIP	470ohm,5%,1/10W,TP,1608	SA
5	R250	2007-000074	R-CHIP	100ohm,5%,1/10W,TP,1608	SA
5	R251	2007-000094	R-CHIP	22Kohm,5%,1/10W,TP,1608	SA
5	R253	2007-000097	R-CHIP	47Kohm,5%,1/10W,TP,1608	SA
5	R254	2007-000070	R-CHIP	0ohm,5%,1/10W,TP,1608	SA
5	R255	2007-000090	R-CHIP	10Kohm,5%,1/10W,TP,1608	SA
5	R256	2007-000074	R-CHIP	100ohm,5%,1/10W,TP,1608	SA
5	R257	2007-000052	R-CHIP	10Kohm,1%,1/10W,TP,1608	SA
5	R260_N	2007-000070	R-CHIP	0ohm,5%,1/10W,TP,1608	SA
5	R401	2007-000074	R-CHIP	100ohm,5%,1/10W,TP,1608	SA
5	R402	2007-001167	R-CHIP	75ohm,5%,1/10W,TP,1608	SA
5	R403	2007-000084	R-CHIP	4.7Kohm,5%,1/10W,TP,1608	SA
5	R404	2007-000090	R-CHIP	10Kohm,5%,1/10W,TP,1608	SA
5	R405	2007-000070	R-CHIP	0ohm,5%,1/10W,TP,1608	SA
5	R407	2007-000070	R-CHIP	0ohm,5%,1/10W,TP,1608	SA
5	R408	2007-000070	R-CHIP	0ohm,5%,1/10W,TP,1608	SA
5	R409	2007-000074	R-CHIP	100ohm,5%,1/10W,TP,1608	SA
5	R410	2007-000074	R-CHIP	100ohm,5%,1/10W,TP,1608	SA
5	R411	2007-000074	R-CHIP	100ohm,5%,1/10W,TP,1608	SA
5	R412	2007-000074	R-CHIP	100ohm,5%,1/10W,TP,1608	SA
5	R413	2007-001134	R-CHIP	68ohm,5%,1/10W,TP,1608	SA
5	R414	2007-000074	R-CHIP	100ohm,5%,1/10W,TP,1608	SA
5	R415	2007-000074	R-CHIP	100ohm,5%,1/10W,TP,1608	SA
5	R416	2007-000074	R-CHIP	100ohm,5%,1/10W,TP,1608	SA
5	R417	2007-000402	R-CHIP	150ohm,5%,1/10W,TP,1608	SA
5	R418	2007-000402	R-CHIP	150ohm,5%,1/10W,TP,1608	SA
5	R419	2007-000074	R-CHIP	100ohm,5%,1/10W,TP,1608	SA
5	R423	2007-000113	R-CHIP	33ohm,5%,1/10W,TP,1608	SA
5	R424	2007-000113	R-CHIP	33ohm,5%,1/10W,TP,1608	SA
5	R425	2007-000113	R-CHIP	33ohm,5%,1/10W,TP,1608	SA
5	R426	2007-000113	R-CHIP	33ohm,5%,1/10W,TP,1608	SA
5	R427	2007-000113	R-CHIP	33ohm,5%,1/10W,TP,1608	SA
5	R428	2007-000072	R-CHIP	47ohm,5%,1/10W,TP,1608	SA
5	R429	2007-000070	R-CHIP	0ohm,5%,1/10W,TP,1608	SA
5	R430	2007-000118	R-CHIP	390ohm,5%,1/10W,TP,1608	SA
5	R431	2007-000084	R-CHIP	4.7Kohm,5%,1/10W,TP,1608	SA

Level	Loc. No.	Code No.	Description	Specification	Remarks
5	R432	2007-000084	R-CHIP	4.7Kohm,5%,1/10W,TP,1608	SA
5	R433	2007-000091	R-CHIP	12Kohm,5%,1/10W,TP,1608	SA
5	R434	2007-000070	R-CHIP	0ohm,5%,1/10W,TP,1608	SA
5	R435	2007-000072	R-CHIP	47ohm,5%,1/10W,TP,1608	SA
5	R436	2007-000113	R-CHIP	33ohm,5%,1/10W,TP,1608	SA
5	R437	2007-000309	R-CHIP	10ohm,5%,1/10W,TP,1608	SA
5	R438	2007-000402	R-CHIP	150ohm,5%,1/10W,TP,1608	SA
5	R439	2007-000072	R-CHIP	47ohm,5%,1/10W,TP,1608	SA
5	R440	2007-000072	R-CHIP	47ohm,5%,1/10W,TP,1608	SA
5	R441	2007-000072	R-CHIP	47ohm,5%,1/10W,TP,1608	SA
5	R442	2007-000309	R-CHIP	10ohm,5%,1/10W,TP,1608	SA
5	R450	2007-000094	R-CHIP	22Kohm,5%,1/10W,TP,1608	SA
5	R451	2007-000092	R-CHIP	15Kohm,5%,1/10W,TP,1608	SA
5	R452	2007-000077	R-CHIP	470ohm,5%,1/10W,TP,1608	SA
5	R453	2007-000077	R-CHIP	470ohm,5%,1/10W,TP,1608	SA
5	R454	2007-000077	R-CHIP	470ohm,5%,1/10W,TP,1608	SA
5	R455	2007-000124	R-CHIP	2.2Kohm,5%,1/10W,TP,1608	SA
5	R456	2007-001167	R-CHIP	75ohm,5%,1/10W,TP,1608	SA
5	R457	2007-000129	R-CHIP	27Kohm,5%,1/10W,TP,1608	SA
5	R458	2007-000129	R-CHIP	27Kohm,5%,1/10W,TP,1608	SA
5	R459	2007-000075	R-CHIP	220ohm,5%,1/10W,TP,1608	SA
5	R461	2007-000090	R-CHIP	10Kohm,5%,1/10W,TP,1608	SA
5	R462	2007-000090	R-CHIP	10Kohm,5%,1/10W,TP,1608	SA
5	R480	2007-000077	R-CHIP	470ohm,5%,1/10W,TP,1608	SA
5	R481	2007-000077	R-CHIP	470ohm,5%,1/10W,TP,1608	SA
5	R501	2007-000074	R-CHIP	100ohm,5%,1/10W,TP,1608	SA
5	R502	2007-000074	R-CHIP	100ohm,5%,1/10W,TP,1608	SA
5	R503	2007-000074	R-CHIP	100ohm,5%,1/10W,TP,1608	SA
5	R504	2007-000074	R-CHIP	100ohm,5%,1/10W,TP,1608	SA
5	R505	2007-000078	R-CHIP	1Kohm,5%,1/10W,TP,1608	SA
5	R506	2007-000074	R-CHIP	100ohm,5%,1/10W,TP,1608	SA
5	R509	2007-000077	R-CHIP	470ohm,5%,1/10W,TP,1608	SA
5	R510	2007-000077	R-CHIP	470ohm,5%,1/10W,TP,1608	SA
5	R511	2007-000072	R-CHIP	47ohm,5%,1/10W,TP,1608	SA
5	R5111	2007-000072	R-CHIP	47ohm,5%,1/10W,TP,1608	SA
5	R512	2007-000072	R-CHIP	47ohm,5%,1/10W,TP,1608	SA
5	R5121	2007-000072	R-CHIP	47ohm,5%,1/10W,TP,1608	SA
5	R5122	2007-000070	R-CHIP	0ohm,5%,1/10W,TP,1608	SA
5	R551	2007-000090	R-CHIP	10Kohm,5%,1/10W,TP,1608	SA
5	R552	2007-000102	R-CHIP	100Kohm,5%,1/10W,TP,1608	SA
5	R601	2007-000074	R-CHIP	100ohm,5%,1/10W,TP,1608	SA
5	R602	2007-000074	R-CHIP	100ohm,5%,1/10W,TP,1608	SA
5	R603	2007-000093	R-CHIP	20Kohm,5%,1/10W,TP,1608	SA
5	R604	2007-000093	R-CHIP	20Kohm,5%,1/10W,TP,1608	SA
5	R605	2007-000090	R-CHIP	10Kohm,5%,1/10W,TP,1608	SA
5	R606	2007-000090	R-CHIP	10Kohm,5%,1/10W,TP,1608	SA
5	R607	2007-000090	R-CHIP	10Kohm,5%,1/10W,TP,1608	SA
5	R608	2007-000078	R-CHIP	1Kohm,5%,1/10W,TP,1608	SA
5	R609	2007-000084	R-CHIP	4.7Kohm,5%,1/10W,TP,1608	SA
5	R610	2007-001044	R-CHIP	56ohm,5%,1/10W,TP,1608	SA
5	R611	2007-001044	R-CHIP	56ohm,5%,1/10W,TP,1608	SA
5	R612	2007-000078	R-CHIP	1Kohm,5%,1/10W,TP,1608	SA
5	R613	2007-000078	R-CHIP	1Kohm,5%,1/10W,TP,1608	SA
5	R651	2007-000074	R-CHIP	100ohm,5%,1/10W,TP,1608	SA
5	R652	2007-000074	R-CHIP	100ohm,5%,1/10W,TP,1608	SA
5	R653	2007-000090	R-CHIP	10Kohm,5%,1/10W,TP,1608	SA
5	R655	2007-000309	R-CHIP	10ohm,5%,1/10W,TP,1608	SA
5	R656	2007-000309	R-CHIP	10ohm,5%,1/10W,TP,1608	SA
5	R658	2007-000084	R-CHIP	4.7Kohm,5%,1/10W,TP,1608	SA
5	R670	2007-000090	R-CHIP	10Kohm,5%,1/10W,TP,1608	SA
5	R671	2007-000090	R-CHIP	10Kohm,5%,1/10W,TP,1608	SA
5	R701	2007-000076	R-CHIP	330ohm,5%,1/10W,TP,1608	SA
5	R702	2007-000094	R-CHIP	22Kohm,5%,1/10W,TP,1608	SA
5	R703	2007-000070	R-CHIP	0ohm,5%,1/10W,TP,1608	SA
5	R704	2007-000102	R-CHIP	100Kohm,5%,1/10W,TP,1608	SA
5	R705	2007-001131	R-CHIP	68ohm,1%,1/10W,TP,1608	SA
5	R706	2007-001214	R-CHIP	82ohm,1%,1/10W,TP,1608	SA

Level	Loc. No.	Code No.	Description	Specification	Remarks
5	R707	2007-000074	R-CHIP	100ohm,5%,1/10W,TP,1608	SA
5	R708	2007-000074	R-CHIP	100ohm,5%,1/10W,TP,1608	SA
5	R709	2007-000074	R-CHIP	100ohm,5%,1/10W,TP,1608	SA
5	R801	2007-000072	R-CHIP	47ohm,5%,1/10W,TP,1608	SA
5	R802	2007-000072	R-CHIP	47ohm,5%,1/10W,TP,1608	SA
5	R803	2007-000072	R-CHIP	47ohm,5%,1/10W,TP,1608	SA
5	R804	2007-000072	R-CHIP	47ohm,5%,1/10W,TP,1608	SA
5	R805	2007-000072	R-CHIP	47ohm,5%,1/10W,TP,1608	SA
5	R901	2007-001164	R-CHIP	75ohm,1%,1/10W,TP,1608	SA
5	R902	2007-001164	R-CHIP	75ohm,1%,1/10W,TP,1608	SA
5	R903	2007-001164	R-CHIP	75ohm,1%,1/10W,TP,1608	SA
5	R904	2007-000074	R-CHIP	100ohm,5%,1/10W,TP,1608	SA
5	R905	2007-000074	R-CHIP	100ohm,5%,1/10W,TP,1608	SA
5	R921	2007-000084	R-CHIP	4.7Kohm,5%,1/10W,TP,1608	SA
5	R922	2007-000084	R-CHIP	4.7Kohm,5%,1/10W,TP,1608	SA
5	R923	2007-000402	R-CHIP	150ohm,5%,1/10W,TP,1608	SA
5	R924	2007-000570	R-CHIP	220OHM,1%,1/10W,DA,TP,1608	SA
5	R925	2007-000084	R-CHIP	4.7Kohm,5%,1/10W,TP,1608	SA
5	R926	2007-000084	R-CHIP	4.7Kohm,5%,1/10W,TP,1608	SA
5	R927	2007-000094	R-CHIP	22Kohm,5%,1/10W,TP,1608	SA
5	R929	2007-000052	R-CHIP	10Kohm,1%,1/10W,TP,1608	SA
5	R930	2007-000939	R-CHIP	47Kohm,1%,1/10W,TP,1608	SA
5	R931	2007-000074	R-CHIP	100ohm,5%,1/10W,TP,1608	SA
5	R932	2007-000070	R-CHIP	0ohm,5%,1/10W,TP,1608	SA
5	R933	2007-000805	R-CHIP	36Kohm,5%,1/10W,TP,1608	SA
5	R934	2007-000805	R-CHIP	36Kohm,5%,1/10W,TP,1608	SA
5	R950	2007-000074	R-CHIP	100ohm,5%,1/10W,TP,1608	SA
5	R951	2007-000074	R-CHIP	100ohm,5%,1/10W,TP,1608	SA
5	R952	2007-000113	R-CHIP	33ohm,5%,1/10W,TP,1608	SA
5	R953	2007-000074	R-CHIP	100ohm,5%,1/10W,TP,1608	SA
5	R954	2007-000113	R-CHIP	33ohm,5%,1/10W,TP,1608	SA
5	R955	2007-000113	R-CHIP	33ohm,5%,1/10W,TP,1608	SA
5	R956	2007-000074	R-CHIP	100ohm,5%,1/10W,TP,1608	SA
5	R957	2007-000113	R-CHIP	33ohm,5%,1/10W,TP,1608	SA
5	R958	2007-000084	R-CHIP	4.7Kohm,5%,1/10W,TP,1608	SA
5	R959	2007-000113	R-CHIP	33ohm,5%,1/10W,TP,1608	SA
5	R960	2007-000084	R-CHIP	4.7Kohm,5%,1/10W,TP,1608	SA
5	R961	2007-000074	R-CHIP	100ohm,5%,1/10W,TP,1608	SA
5	R962	2007-000113	R-CHIP	33ohm,5%,1/10W,TP,1608	SA
5	R963	2007-000084	R-CHIP	4.7Kohm,5%,1/10W,TP,1608	SA
5	R964	2007-000078	R-CHIP	1Kohm,5%,1/10W,TP,1608	SA
5	R965	2007-000078	R-CHIP	1Kohm,5%,1/10W,TP,1608	SA
5	R966	2007-000078	R-CHIP	1Kohm,5%,1/10W,TP,1608	SA
5	R967	2007-000078	R-CHIP	1Kohm,5%,1/10W,TP,1608	SA
5	R968	2007-000512	R-CHIP	2.4Kohm,5%,1/10W,TP,1608	SA
5	R969	2007-001167	R-CHIP	75ohm,5%,1/10W,TP,1608	SA
5	R970	2007-000078	R-CHIP	1Kohm,5%,1/10W,TP,1608	SA
5	R971	2007-000090	R-CHIP	10Kohm,5%,1/10W,TP,1608	SA
5	R972	2007-000074	R-CHIP	100ohm,5%,1/10W,TP,1608	SA
5	R973	2007-000074	R-CHIP	100ohm,5%,1/10W,TP,1608	SA
5	R975	2007-000091	R-CHIP	12Kohm,5%,1/10W,TP,1608	SA
5	R976	2007-000071	R-CHIP	22ohm,5%,1/10W,TP,1608	SA
5	R977	2007-000094	R-CHIP	22Kohm,5%,1/10W,TP,1608	SA
5	R978	2007-001167	R-CHIP	75ohm,5%,1/10W,TP,1608	SA
5	R979	2007-000078	R-CHIP	1Kohm,5%,1/10W,TP,1608	SA
5	R980	2007-000102	R-CHIP	100Kohm,5%,1/10W,TP,1608	SA
5	R981	2007-000070	R-CHIP	0ohm,5%,1/10W,TP,1608	SA
5	R982	2007-001131	R-CHIP	68ohm,1%,1/10W,TP,1608	SA
5	R983	2007-001167	R-CHIP	75ohm,5%,1/10W,TP,1608	SA
5	R984	2007-001167	R-CHIP	75ohm,5%,1/10W,TP,1608	SA
5	R985	2007-001167	R-CHIP	75ohm,5%,1/10W,TP,1608	SA
5	R986	2007-001167	R-CHIP	75ohm,5%,1/10W,TP,1608	SA
5	R987	2007-000074	R-CHIP	100ohm,5%,1/10W,TP,1608	SA
5	R988	2007-000074	R-CHIP	100ohm,5%,1/10W,TP,1608	SA
5	R989	2007-000074	R-CHIP	100ohm,5%,1/10W,TP,1608	SA
5	R990	2007-000074	R-CHIP	100ohm,5%,1/10W,TP,1608	SA
5	R991	2007-000074	R-CHIP	100ohm,5%,1/10W,TP,1608	SA

Level	Loc. No.	Code No.	Description	Specification	Remarks
5	R992	2007-000078	R-CHIP	1Kohm,5%,1/10W,TP,1608	SA
5	RA201	2011-000651	R-NET	100HM,5%,1/16W,L,CHIP,8P,TP,3216	SA
5	RA202	2011-000651	R-NET	100HM,5%,1/16W,L,CHIP,8P,TP,3216	SA
5	RA203	2011-000651	R-NET	100HM,5%,1/16W,L,CHIP,8P,TP,3216	SA
5	RA204	2011-000651	R-NET	100HM,5%,1/16W,L,CHIP,8P,TP,3216	SA
5	RA205	2011-000651	R-NET	100HM,5%,1/16W,L,CHIP,8P,TP,3216	SA
5	RA206	2011-000651	R-NET	100HM,5%,1/16W,L,CHIP,8P,TP,3216	SA
5	RA207	2011-000651	R-NET	100HM,5%,1/16W,L,CHIP,8P,TP,3216	SA
5	RA208	2011-000651	R-NET	100HM,5%,1/16W,L,CHIP,8P,TP,3216	SA
5	RA209	2011-000651	R-NET	100HM,5%,1/16W,L,CHIP,8P,TP,3216	SA
5	RA210	2011-000515	R-NET	4.7Kohm,5%,1/16W,L,CHIP,8P,TP	SA
5	RA211	2011-000515	R-NET	4.7Kohm,5%,1/16W,L,CHIP,8P,TP	SA
5	RA401	2011-000002	R-NET	220HM,5%,1/16W,L,CHIP,8P,TP,3216	SA
5	RA402	2011-000002	R-NET	220HM,5%,1/16W,L,CHIP,8P,TP,3216	SA
5	RA403	2011-000002	R-NET	220HM,5%,1/16W,L,CHIP,8P,TP,3216	SA
5	RA404	2011-000002	R-NET	220HM,5%,1/16W,L,CHIP,8P,TP,3216	SA
5	RA405	2011-000002	R-NET	220HM,5%,1/16W,L,CHIP,8P,TP,3216	SA
5	RA406	2011-000002	R-NET	220HM,5%,1/16W,L,CHIP,8P,TP,3216	SA
5	X201	2801-004117	CRYSTAL-SMD	6MHZ,30PPM,28-ABX,20PF,1500HM,TP	SA
5	X401	2801-003667	CRYSTAL-SMD	14.3182MHZ,50PPM,28-AAN,16,500HM,TP	SA
5	X501	2801-004300	CRYSTAL-SMD	18.432MHZ,30ppm,28-ABX,13pF,30ohm,TP	SA
3	-	BN94-00443C	ASSY PCB POWER	MU20EO	SNA
4	C801	2401-003958	C-AL	180uF,20%,450V,WT,BK,25.4x50mm,10	SNA
4	CIS01	0202-000008	SOLDER-WIRE	S63S-W3.0,S63S,D3,63Sn/37Pb,-	SNA
4	CIS02	0204-001527	FLUX	DF-201TVS,MIX,0.820,FLUX 13%, 14KG	SNA
4	CIS03	0202-000187	SOLDER-WIRE FLUX	-,RS60S,D1.2,63Sn/37Pb	SNA
4	CIS04	0204-000442	SOLVENT	1M-1000,C3H7OH,96,-	SNA
4	CIS05	0201-001096	ADHESIVE-HM	#3748,YEL,8500CPS,-	SNA
4	CN801S	3711-002855	CONNECTOR-HEADER	BOX,2P,1R,7.92mm,STRAIGHT,SN	SNA
4	CN802	BN39-00459A	LEAD CONNECTOR	MUSE,UL1007#26,UL/CSA,10P,110mm,#26,YBNH250-10,SMH200-10,BK	SA
4	CN803	BN39-00455A	LEAD CONNECTOR	MUSE,UL1007#26,UL/CSA,6P,100mm,#26,YBNH200-06,SMH200-06,BK,NON-FLAT	SA
4	CX801S	2301-001244	C-FILM,LEAD-PEF	150nF,20%,275Vac,TP,18x8.5x15,	SA
4	CX802S	2301-001244	C-FILM,LEAD-PEF	150nF,20%,275Vac,TP,18x8.5x15,	SA
4	D801S	0402-001227	DIODE-BRIDGE	D3SBA60,600V,2.3A,SIP-4,BK	SA
4	IC801S	1203-002958	IC-PWM CONTROLLER	NCP1200P60,DIP,8P,10.16X6.6MM,PLASTIC,-,550MW,-25TO+125C,110MA,-,ST	SA
4	LX801S	BN29-00002A	FILTER LINE NOISE	LCDMO,LS404110M,0.2ohm,9.0mH,2.0A,250Vac,BK,300&alpha(500Vdc),-25°...+120°...	SA
4	LX802S	BN29-00002A	FILTER LINE NOISE	LCDMO,LS404110M,0.2ohm,9.0mH,2.0A,250Vac,BK,300&alpha(500Vdc),-25°...+120°...	SA
4	NT801S	1404-001076	THERMISTOR-NTC	8ohm,15%,-,17mW/C,TP	SA
4	PC801S	0604-001018	PHOTO-COUPLER	DAR-TR,63-125%,200mW,DIP-4,ST	SA
4	T801S	BN26-00008A	TRANS SWITCHING	ER-3541H,LCDTM,90-264Vac,PL3,PM2A,+14V,ER-3541H,50/60Hz,510uH,14.0uH,H-TYPE	SA
4	-	BN97-00207C	ASSY AUTO-POWER	MU20EO	SNA
5	BD801	3301-000011	BEAD-AXIAL	,3.5x1.0x5.7mm,,BK,,,	SA
5	BD802	3301-000011	BEAD-AXIAL	,3.5x1.0x5.7mm,,BK,,,	SA
5	BD803	3301-000011	BEAD-AXIAL	,3.5x1.0x5.7mm,,BK,,,	SA
5	C802	2301-001661	C-FILM,LEAD-PEF		SA
5	C803	2401-000970	C-AL	22uF,20%,50V,WT,TP,5x11,5	SA
5	C804	2202-000654	C-CERAMIC,MLC-RADIAL	100nF,10%,50V,X7R,TP,5.1x6.6x3.2mm,5	SA
5	C805	2201-000146	C-CERAMIC,DISC	0.1NF,5%,50V,SL,TP,5X3.5MM,5	SA
5	C806	2301-000016	C-FILM,LEAD-PEF	22nF,5%,100V,TP,7.2x4.5x9.0mm,	SA
5	C807	2301-000013	C-FILM,LEAD-PEF	4.7nF,5%,100V,TP,10.5x12.5x6.5	SA
5	C808	2201-000288	C-CERAMIC,DISC	1NF,10%,2KV,Y5P,TP,9X5MM,7.5	SA
5	C809	2401-000142	C-AL	1000uF,20%,16V,WT,TP,10x20,5	SA
5	C810	2401-000142	C-AL	1000uF,20%,16V,WT,TP,10x20,5	SA
5	C811	2401-000142	C-AL	1000uF,20%,16V,WT,TP,10x20,5	SA
5	C812	2401-003139	C-AL	1000uF,20%,25V,WT,TP,10*20,5mm	SA
5	C813	2401-003139	C-AL	1000uF,20%,25V,WT,TP,10*20,5mm	SA
5	C814	2401-003139	C-AL	1000uF,20%,25V,WT,TP,10*20,5mm	SA
5	C815	2202-002244	C-CERAMIC,MLC-RADIAL	1000NF,+80-20%,16V,Y5V,TP,5.1X6.4X3.1MM,-	SA
5	C816	2301-000019	C-FILM,LEAD-PEF	47nF,10%,100V,TP,8.9x5.1x13.5mm	SA
5	C817	2202-000654	C-CERAMIC,MLC-RADIAL	100nF,10%,50V,X7R,TP,5.1x6.6x3.2mm,5	SA
5	C818	2202-000654	C-CERAMIC,MLC-RADIAL	100nF,10%,50V,X7R,TP,5.1x6.6x3.2mm,5	SA
5	C819	2401-003139	C-AL	1000uF,20%,25V,WT,TP,10*20,5mm	SA
5	CY801S	2201-002026	C-CERAMIC,DISC	1NF,20%,400V,Y5P,TP,11X6MM,7.5	SA
5	CY802S	2201-002026	C-CERAMIC,DISC	1NF,20%,400V,Y5P,TP,11X6MM,7.5	SA
5	CY803S	2201-000023	C-CERAMIC,DISC	2.2NF,20%,250V,Y5U,TP,11X7MM,5	SA

Level	Loc. No.	Code No.	Description	Specification	Remarks
5	D802	0402-000012	DIODE-RECTIFIER	UF4007,1KV,1A,DO-41,TP	SA
5	D803	0402-000546	DIODE-RECTIFIER	TVR10G,400V,1.0A,DO-41,TP	SA
5	D804	0403-001327	DIODE-ZENER	MTZJ18A,16.22-17.06V,500mW,DO-34,TP	SA
5	D805	0401-000005	DIODE-SWITCHING	1N4148,100V,200mA,DO-35,TP	SA
5	D806	0403-001328	DIODE-ZENER	MTZJ22A,20.15-21.20V,500mW,DO-34,TP	SA
5	D809	0403-001327	DIODE-ZENER	MTZJ18A,16.22-17.06V,500mW,DO-34,TP	SA
5	D810	0403-001329	DIODE-ZENER	MTZJ24B,22.61-23.77V,500mW,DO-34,TP	SA
5	D811	0403-001211	DIODE-ZENER	MTZJ12B,11.44-12.03V,500mW,DO-34,TP	SA
5	D812	0403-000361	DIODE-ZENER	UZ6.2BSB,6.2V,5.99-6.24V,500mW	SA
5	EY801	6042-000002	EYELET	ID1.5,0D2,L2.8,Ni+SN,BSP3-1/2H	SNA
5	EY802	6042-000002	EYELET	ID1.5,0D2,L2.8,Ni+SN,BSP3-1/2H	SNA
5	EY803	6042-000002	EYELET	ID1.5,0D2,L2.8,Ni+SN,BSP3-1/2H	SNA
5	EY804	6042-000002	EYELET	ID1.5,0D2,L2.8,Ni+SN,BSP3-1/2H	SNA
5	EY805	6042-000002	EYELET	ID1.5,0D2,L2.8,Ni+SN,BSP3-1/2H	SNA
5	EY806	6042-000002	EYELET	ID1.5,0D2,L2.8,Ni+SN,BSP3-1/2H	SNA
5	EY807	6042-000002	EYELET	ID1.5,0D2,L2.8,Ni+SN,BSP3-1/2H	SNA
5	EY808	6042-000002	EYELET	ID1.5,0D2,L2.8,Ni+SN,BSP3-1/2H	SNA
5	FP801S	3601-001226	FUSE-RADIAL LEAD	250V,3.15A,TIME-LAG,PLASTIC,8.5x8mm	SA
5	IC802	1203-000002	IC-POS. ADJUST REG.	431,TO-92,3P,-,PLASTIC,2.44/2.	SA
5	JP801	BH39-40305U	CBF HARNESS	52MM,AWG22(0.6PI),-,-,AWG22(0.	SA
5	JP802	BH39-40305U	CBF HARNESS	52MM,AWG22(0.6PI),-,-,AWG22(0.	SA
5	JP803	BH39-40305U	CBF HARNESS	52MM,AWG22(0.6PI),-,-,AWG22(0.	SA
5	JP804	BH39-40305U	CBF HARNESS	52MM,AWG22(0.6PI),-,-,AWG22(0.	SA
5	JP805	BH39-40305U	CBF HARNESS	52MM,AWG22(0.6PI),-,-,AWG22(0.	SA
5	JP806	BH39-40305U	CBF HARNESS	52MM,AWG22(0.6PI),-,-,AWG22(0.	SA
5	MP1.0	BN41-00357A	PCB SUB	LCDTV_Power,FR1,1,R1.0,1.6mm,100*185mm,MUSE20,2	SNA
5	NT802	1404-001238	THERMISTOR-NTC	100KOHM,0.05A,4000K,2MW/C,-,2.0,TP	SA
5	QR802	0501-000398	TR-SMALL SIGNAL	KSC945,NPN,250mW,TO-92,TP,120-	SA
5	R801	2003-000704	R-METAL OXIDE(S)	47Kohm,5%,1W,AA,TP,3.3x9mm	SA
5	R802	2002-001010	R-COMPOSITION	1.8Mohm,5%,1/2W,AA,TP,3.7x9mm	SA
5	R803	2002-001010	R-COMPOSITION	1.8Mohm,5%,1/2W,AA,TP,3.7x9mm	SA
5	R804	2003-000855	R-METAL OXIDE(S)	47Kohm,5%,3W,AA,TP,6x16mm	SA
5	R805	2001-000281	R-CARBON	100OHM,5%,1/8W,AA,TP,1.8X3.2MM	SA
5	R806	2001-000281	R-CARBON	100OHM,5%,1/8W,AA,TP,1.8X3.2MM	SA
5	R807	2001-000221	R-CARBON	1.2KOHM,5%,1/8W,AA,TP,1.8X3.2MM	SA
5	R808	2001-000633	R-CARBON	30KOHM,5%,1/8W,AA,TP,1.8X3.2MM	SA
5	R809	2005-001058	R-WIRE WOUND	0.39ohm,1%,1W,AA,TP,4.3x12mm	SA
5	R810	2001-000221	R-CARBON	1.2KOHM,5%,1/8W,AA,TP,1.8X3.2MM	SA
5	R811	2001-000429	R-CARBON	1KOHM,5%,1/8W,AA,TP,1.8X3.2MM	SA
5	R812	2001-000633	R-CARBON	30KOHM,5%,1/8W,AA,TP,1.8X3.2MM	SA
5	R813	2004-004090	R-METAL	6.49Kohm,1%,1/4W,AA,TP,2.5x6.5	SA
5	R814	2004-000001	R-METAL	6.2Kohm,1%,1/4W,AA,TP,2.4x6.4m	SA
5	R815	2001-000411	R-CARBON	18KOHM,5%,1/8W,AA,TP,1.8X3.2MM	SA
5	R816	2001-000290	R-CARBON	10KOHM,5%,1/8W,AA,TP,1.8X3.2MM	SA
5	R817	2001-000290	R-CARBON	10KOHM,5%,1/8W,AA,TP,1.8X3.2MM	SA
5	R818	2001-000628	R-CARBON	300OHM,5%,1/8W,AA,TP,1.8X3.2MM	SA
5	R819	2001-000009	R-CARBON	20KOHM,5%,1/8W,AA,TP,1.8X3.2MM	SA
5	R820	2003-000525	R-METAL OXIDE(S)	180ohm,5%,2W,AA,TP,4x12mm	SA
5	R821	2001-000009	R-CARBON	20KOHM,5%,1/8W,AA,TP,1.8X3.2MM	SA
5	RX801S	2002-001052	R-COMPOSITION	820Kohm,5%,1/2W,AA,TP,3.9x10mm	SA
5	RY801S	2002-001012	R-COMPOSITION	8.2Mohm,5%,1/2W,AA,TP,3.7x9mm	SA
5	SCR801	1401-000103	THYRISTOR-SCR	800mA,400V,400V,10A,TO-92	SA
5	SCR802	1401-000103	THYRISTOR-SCR	800mA,400V,400V,10A,TO-92	SA
5	VX801S	1405-000152	VARISTOR	560V,2500A,14x8.5mm,TP	SA
4	HS802	BP96-00288A	ASSY HEAT SINK P	BP62-00032A,SCREW,MBR2045CT,MBR16100CT,RUBBER	SNA
5	CIS	0402-000240	DIODE-RECTIFIER	MBR2045,45V,20A,TO-220,ST	SA
5	CIS	0404-001125	DIODE-SCHOTTKY	MBR16100CT,100V,8000MA,TO-220AB,ST	SA
5	CIS	BH61-00004A	SPRING ETC-TR	CDA,CDB,SUS304,-,-,-,TO.5,-,-	SNA
5	CIS	BN73-00047B	SILICON/RUBBER	NB21BS,TC1370,17*19*TO.4,@3.65	SNA
5	CIS	BP62-00032A	HEAT SINK-ES	NB21BS,A6063S,T2.0,15,70	SNA
4	HS801	BP96-00289A	ASSY HEAT SINK P	BP62-00022A,SCREW,STP6NK60Z,OIL SILICON	SNA
5	CIS	0205-001027	OIL-SILICON	G746,-,-	SNA
5	CIS	0505-001768	FET-SILICON	STP6NK60ZFP(031Y,N,600V,6A,1.2OHM,32W,TO-220	SA
5	CIS	6003-000335	SCREW-TAPTITE	RH,+2S,M3,L8,ZPC(YEL),SWRCH18	SNA
5	CIS	BP62-00022A	HEAT SINK-ES	AQ21Q,A6063S,T2.0,9,50	SNA

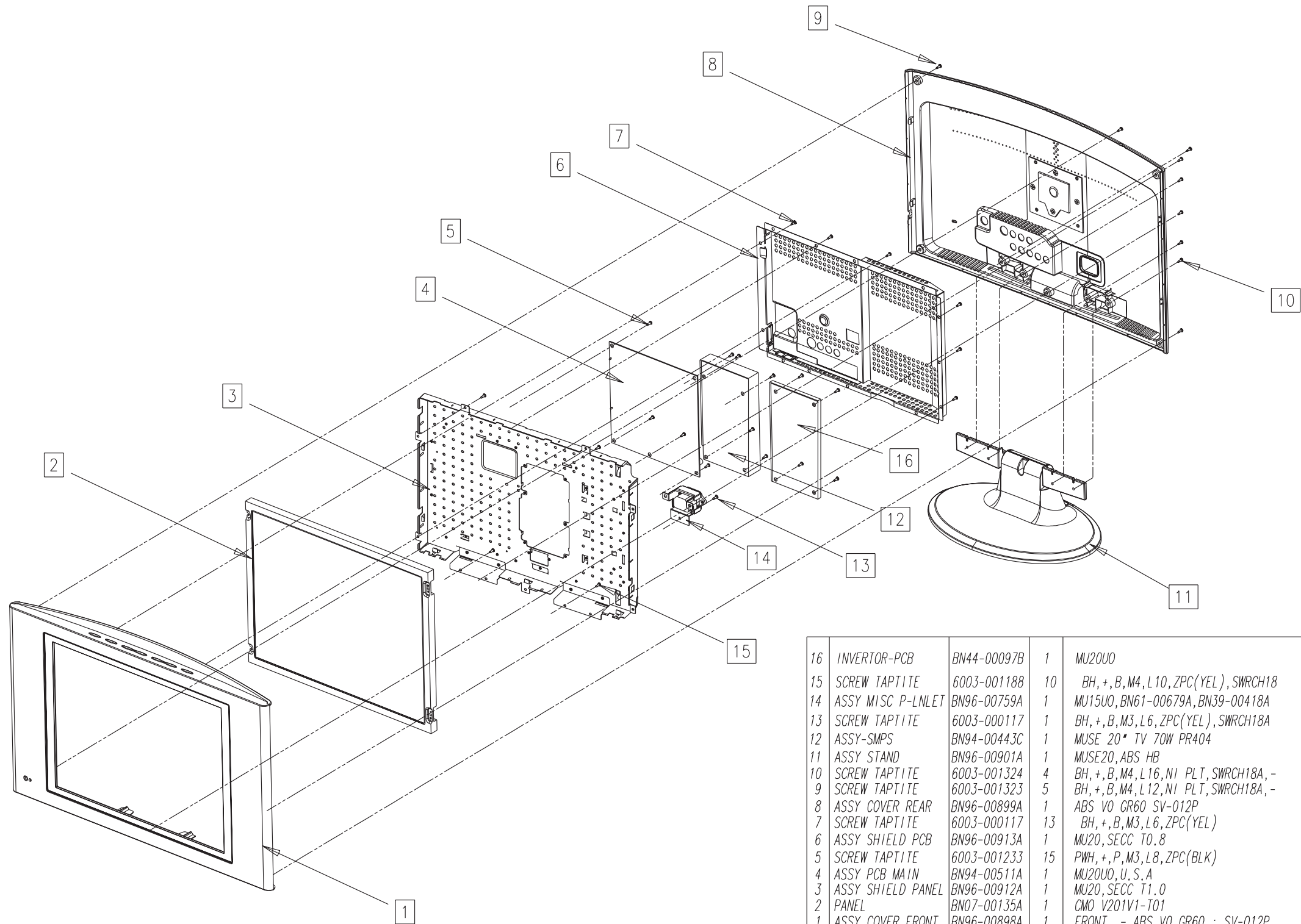
7-2 Others

Level	Loc. No.	Code No.	Description	Specification	Remarks
2	-	BN90-00452A	ASSY STAND	MU20EO	SA
3	STD	BN96-00901A	ASSY STAND P	MUSE 20,SV-012P	SNA
4	STD	6003-000122	SCREW-TAPTITE	BH,+,B,M4,L12,ZPC(YEL),SWRCH18	SA
4	STD	6003-001136	SCREW-TAPTITE	BH,+,B,M4,L8,ZPC(YEL),SWRCH18A	SNA
4	STD	6003-001188	SCREW-TAPTITE	BH,+,B,M4,L10,YEL,SWRCH18A	SNA
4	STD	6003-001337	SCREW-TAPTITE	CH,+,S,M4,L6,ZPC(YEL),SWRCH18A,-	SNA
4	STD	BN61-00903A	BRACKET-FRAME	MUSE 20,SECC,T1.0	SNA
4	STD	BN61-00904A	BRACKET-STAND	MUSE 20,SECC,T1.0	SNA
4	STD	BN61-00907A	STAND-BASE	MUSE 20,ABS HB,GR60	SNA
4	STD	BN61-00908A	STAND-COVER	MUSE 20,ABS HB,GR60	SNA
4	STD	BN73-00052A	RUBBER FOOT	ARES 17,SILICON,DIA 17 * T1.5,BLACK	SNA
4	STD	BN96-00900A	ASSY MISC P-HINGE	MUSE 20	SNA
2	-	BN90-00543A	ASSY COVER REAR	RT17NSJ	SNA
3	C/R+STD	6003-001324	SCREW-TAPTITE	BH,+,B,M4,L16,NI PLT,SWRCH18A,-	SNA
3	C/R	BN96-00899A	ASSY COVER P-REAR	MUSE 20,ABS V0,SV012P	SNA
4	C/R	BN63-01064A	COVER-REAR	MUSE 20,ABS HB	SA
4	C/R	BN63-01140A	FELT	MUSE20,FELT,1.0,122,122	SNA
4	C/R	BN64-00220A	INLAY-REAR	MUSE,PC EMBO,TO.2,GRAY,USA	SNA
4	C/R	BN70-00183A	BRACKET-VESA	RB17AS,SECC,1	SNA
2	-	BN90-00628A	ASSY COVER FRONT	MU20UO	SNA
3	C/F+C/R	6003-001323	SCREW-TAPTITE	BH,+,B,M4,L12,NI PLT,SWRCH18A,-	SNA
3	C/F	BN96-00898A	ASSY COVER P-FRONT	MUSE 20,ABS V0,GR806P,SV012P	SNA
4	C/F	6003-000259	SCREW-TAPTITE	BH,+,B,M3,L8,ZPC(YEL),SWRCH18A	SNA
4	C/F	6003-000276	SCREW-TAPTITE	BH,+,B,M3,L10,ZPC(YEL),SWCH10	SNA
4	C/F	AA63-00723A	COVER-DOME R	MUSE,PS,T2.0	SNA
4	C/F	AA63-00724A	COVER-DOME L	MUSE,PS,T2.0	SNA
4	C/F	BN63-01063A	COVER-FRONT	MUSE 20,ABS HB	SA
4	C/F	BN64-00155A	KNOB-FUNCTION	VR17KO,ABS HB,.....	SNA
4	C/F	BN64-00207A	BADGE-BRAND	POSEIDON,AL,T1.5,8.5,50,BLK,SILVER,SAMSUNG(G/S)	SNA
4	C/F	BN67-00083A	LENS LED-IR	VR17KO,ABS,CLEAR,,,ACRYL	SNA
4	C/F	BN96-00495A	ASSY SPEAKER P	16ohm,Ares 15&17,Left,3W,240mm	SNA
4	C/F	BN96-00752A	ASSY BOARD P-IR	MU15UO,IR	SNA
4	C/F	BN96-00892A	ASSY SPEAKER P	16ohm,Ares 20,Right,3W,690mm	SNA
4	C/F	BN96-00947A	ASSY BOARD P-FUNCTION	MU20EO,FUNCTION	-
2	-	BN91-00349G	ASSY LCD	MU20EO	SNA
3	LCD	BN07-00135A	LCD-PANEL	V201V1-T01,Rubens,640*480,448.6*339.6*25,16.7M,40,0.637*0.637,0-50,5V,TN	SNA
2	-	BN91-00767A	ASSY CHASSIS	MU20UO	SA
2	-	BN91-00768A	ASSY SHIELD	MU20UO	SNA
3	B/SOCK+SH/PAN	6003-000117	SCREW-TAPTITE	BH,+,B,M3,L6,ZPC(YEL),SWRCH18A	SNA
3	C/F+SH/PAN	6003-001188	SCREW-TAPTITE	BH,+,B,M4,L10,YEL,SWRCH18A	SNA
3	CIS	3809-001522	CABLE-FLAT	30V,80C,70mm,50P,0.5mm,-	SNA
3	CIS	BN44-00097B	INVERTER	MU20*JV80174/TB,14V,3.2mA,6.2mA,535Hz,174.3*80*11.5,6 Lamp,48kHz,1800Vrms,IV801	SNA
3	CIS	BN61-01001A	HOLDER-CONNECTER	MUSE 20,ABS V0	SNA
3	CIS	BN73-00024B	SILICON/RUBBER-GAP PAD	POSEIDON,SILICON,28*28 T2.0,BERGQUIST	SNA
3	GRD/WIRE+SH/PAN	6003-001233	SCREW-TAPTITE	PWH,+,P,M3,L8,ZPC(BLK),SWCRH18A	SNA
3	IN/PCB+SH/PAN	6003-001233	SCREW-TAPTITE	PWH,+,P,M3,L8,ZPC(BLK),SWCRH18A	SNA
3	M/PCB+SH/PAN	6003-001233	SCREW-TAPTITE	PWH,+,P,M3,L8,ZPC(BLK),SWCRH18A	SNA
3	POW/PCB+SH/PAN	6003-001233	SCREW-TAPTITE	PWH,+,P,M3,L8,ZPC(BLK),SWCRH18A	SNA
3	SH/PCB+SH/PAN	6003-000117	SCREW-TAPTITE	BH,+,B,M3,L6,ZPC(YEL),SWRCH18A	SNA
3	CIS	BN96-00759A	ASSY MISC P-LNLET	MU15UO,BN61-00679A,BN39-00418A	SNA
3	CIS	BN96-00912A	ASSY MISC P-BRKT PANEL	MU20,SECC T1.0	SNA
4	CIS	BN63-01065A	SHIELD-PANEL CMO	MUSE 20,SECC,T1.0	SA

Level	Loc. No.	Code No.	Description	Specification	Remarks
4	CIS	BN63-01172A	GASKET	MU20,CONDUCTIVE FABRIC,7mm,20mm,110mm,GRAY,45K,71TSFK-20-7-110-13	SNA
3	CIS	BN96-00913A	ASSY MISC P-SHIELD PCB	MU20,SECC T0.8	SNA
4	CIS	BH68-30003C	LABEL-00,HIGH,VOLTAGE	SS,ART 100G,30*33,YEL	SNA
4	CIS	BN63-01067A	SHIELD-PCB CMO	MUSE 20,SECC,T0.8	SA
4	CIS	BN71-00024A	EARTH-PLATE	GH17LS,SUS,T0.15	SNA
2	-	BN92-00701K	ASSY LABEL	VN40JO	SNA
3	LABEL	BN68-00493D	LABEL RATING-00	NO SILK,SS,PE,T0.05,90*45,BLK,POLYESTER	SNA
2	-	BN92-00703K	ASSY P/MATERIAL	MU20EO	SNA
3	P/M	0203-001102	TAPE-OPP MASKING	OPP-2,T0.05,W100,L400M,CLR	SNA
3	P/M	6902-000306	BAG WRAPPING	LDPE,T0.02,L10000,W500,TRP,,,	SNA
3	P/M	6902-000358	BAG PE	HDPE/NITRON(DOUBLE),T0.02/T0.5,W900,L800,WHT,28,4AL29NO	SNA
3	P/M	6902-000576	BAG ROLL	LDPE,T0.05,W2400,L1000,TRP,-,-	SNA
3	P/M	BH69-00256C	PAD-PACKING-EDGE	MV940,B400,W200,L2030,-,-,YEL,-,-	SNA
3	P/M	BH69-00457A	PACKING-PAD BOTTOM	GH17,FOAM,T3.0,1180,1130	SNA
3	P/M	BH69-30360A	BAG-AIR	HDPE,T0.2,W1000*L1800,N,-,ALL	SNA
3	P/M	BN69-00140F	PAD-PALLET COVER	ML17,SW,1100*3800,1248,-,-,-,-	SNA
3	P/M	BN69-00140V	PAD-PALLET COVER	RB15AS,SW4,1200,3530,-,-,-,-	SNA
3	P/M	BN69-00617F	PALLET-PACKING	MUSE 20,WOODEN,1130,1410,120	SNA
3	P/M	BN69-00655A	CUSHION	MUSE 20,EPS M50	SNA
2	-	BN92-00916A	ASSY ACCESSORY	GV17NS	SNA
2	-	BN92-00997A	ASSY BOX	MU20UO	SNA
3	BOX	BH68-00329D	LABEL BAR CODE-01	NO CE,NO WT'Y,MPRII,LABEL-BARCODE,MOJO 90G,90,95,WHT	SNA
3	BOX	BH75-10529C	UNIT-HANDLE/PACKING	S/M170MP,PE-LD,PE-HD,-,WHITE,-	SA
4	CIS	BN72-60001A	LEVER-TOP	LSD210TL,PE-LD,WHITE,TFT_LCD	SNA
4	CIS	BN72-60002C	LEVER-BOTTOM	S/M170MP,PE-HD,BLUE	SNA
3	BOX	BN69-00673B	BOX	LTN2035(MU20UO),SW4,YEL,A-1,SEA(OFFSET)	SNA

6 Exploded View and Parts List

※ You can search for updated part codes through ITSELF web site.
URL : <http://itself.sec.samsung.co.kr/>

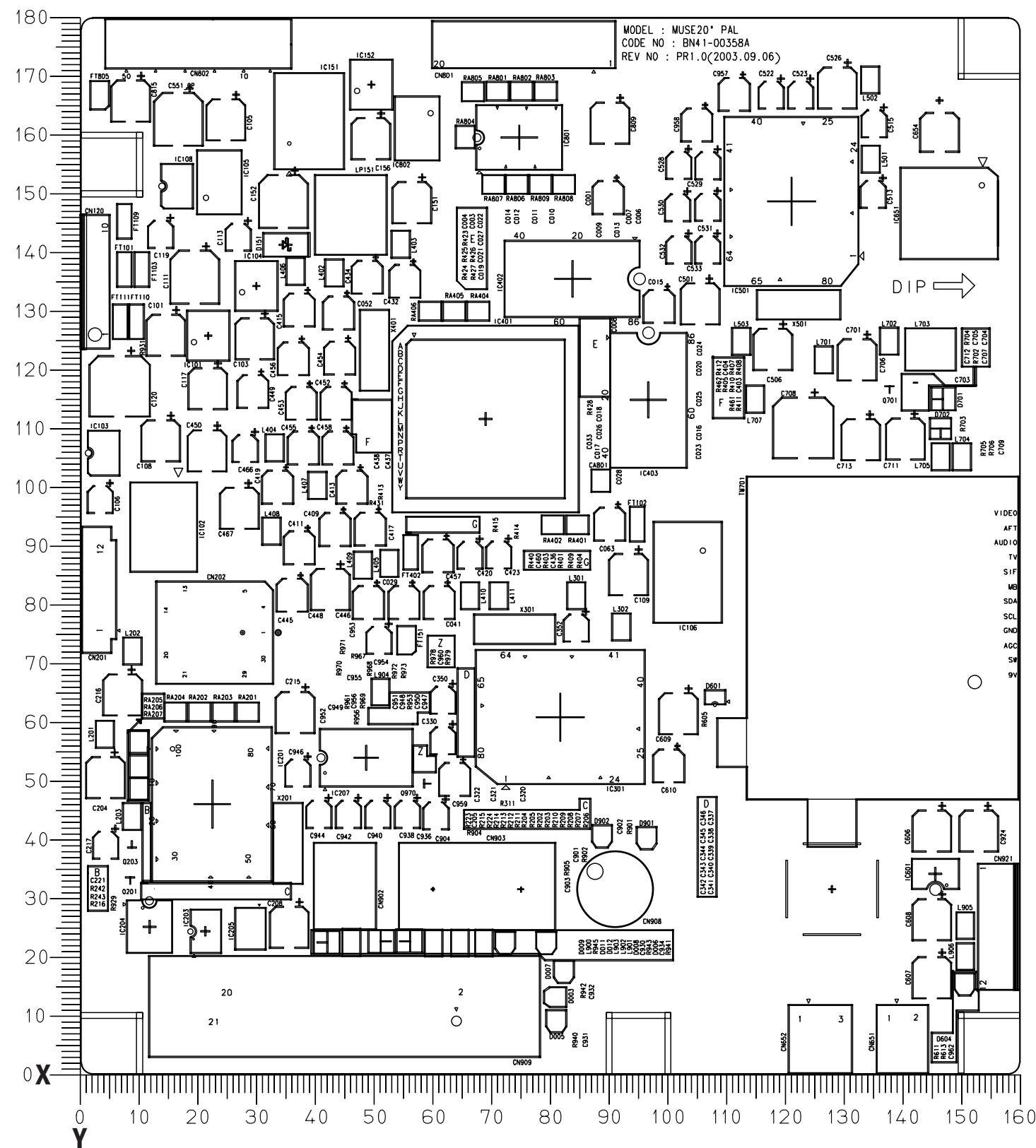


16	INVERTOR-PCB	BN44-00097B	1	MU20U0	SA
15	SCREW TAPTITE	6003-001188	10	BH,+,B,M4,L10,ZPC(YEL),SWRCH18	SA
14	ASSY MISC P-LNLET	BN96-00759A	1	MU15U0,BN61-00679A,BN39-00418A	SNA
13	SCREW TAPTITE	6003-000117	1	BH,+,B,M3,L6,ZPC(YEL),SWRCH18A	SA
12	ASSY-SMPS	BN94-00443C	1	MUSE 20" TV 70W PR404	SNA
11	ASSY STAND	BN96-00901A	1	MUSE20,ABS HB	SA
10	SCREW TAPTITE	6003-001324	4	BH,+,B,M4,L16,NI PLT,SWRCH18A,-	SA
9	SCREW TAPTITE	6003-001323	5	BH,+,B,M4,L12,NI PLT,SWRCH18A,-	SA
8	ASSY COVER REAR	BN96-00899A	1	ABS V0 GR60 SV-012P	SA
7	SCREW TAPTITE	6003-000117	13	BH,+,B,M3,L6,ZPC(YEL)	SA
6	ASSY SHIELD PCB	BN96-00913A	1	MU20,SECC T0.8	SNA
5	SCREW TAPTITE	6003-001233	15	PWH,+,P,M3,L8,ZPC(BLK)	SA
4	ASSY PCB MAIN	BN94-00511A	1	MU20U0,U.S.A	SA
3	ASSY SHIELD PANEL	BN96-00912A	1	MU20,SECC T1.0	SA
2	PANEL	BN07-00135A	1	CMO V201V1-T01	SA
1	ASSY COVER FRONT	BN96-00898A	1	FRONT - ABS V0 GR60 : SV-012P	SA
No	Part Name	Code No	Q'TY	Specification	Remark

Memo

10 PCB Layout

10-1 Main PCB Layout



Loc. No.	Description	X	Y
DIODE			
D151	DIODE-RECTIFIER	39.1	144.2
D201	DIODE-SWITCHING	32.2	28.5
D202	DIODE-ZENER	27.7	27.7
D203	DIODE-ZENER	12.6	37.5
D204	DIODE-ZENER	13.3	41.6
D205	DIODE-SWITCHING	14.4	30.7
D401	DIODE-SWITCHING	47.3	110.2
D501	DIODE-ZENER	117.9	125.1
D502	DIODE-ZENER	103.2	150.7
D503	DIODE-ZENER	102.9	146.8
D504	DIODE-ZENER	108.1	153.8
D505	DIODE-ZENER	108.4	157.7
D506	DIODE-ZENER	132.6	169.5
D551	DIODE-SWITCHING	14.3	161.8
D601	DIODE-ZENER	108.1	64.1
D602	DIODE-ZENER	150.5	26.5
D604	DIODE-ZENER	150.7	17.7
D701	DIODE-SWITCHING	146.9	115.0
D702	DIODE-ZENER	146.5	110.0
D901	DIODE-ZENER	96.4	40.2
D902	DIODE-ZENER	88.8	40.5
D903	DIODE-ZENER	32.6	24.1
D912	DIODE-ZENER	142.8	59.4
D921	DIODE-SWITCHING	148.1	24.2
D922	DIODE-ARRAY	149.8	131.2
D923	DIODE-ZENER	74.5	21.8
D924	DIODE-ZENER	61.0	21.8
D925	DIODE-ZENER	65.0	22.0
D926	DIODE-ZENER	78.5	22.0
D927	DIODE-SWITCHING	41.4	102.2
D928	DIODE-SWITCHING	57.0	82.3
D929	DIODE-SWITCHING	35.0	122.1
IC			
IC101	IC-POS.FIXED REG.	21.7	125.8
IC102	IC-VOLTAGE REGULATOR	14.1	93.2

Loc. No.	Description	X	Y
TRANSISTOR			
IC103	FET-SILICON	3.8	105.8
IC104	IC-POS.FIXED REG.	29.9	134.3
IC105	IC-POS.FIXED REG.	23.6	152.2
IC106	IC-POS.FIXED REG.	103.4	84.9
IC108	FET-SILICON	16.3	151.3
IC151	IC-POS.FIXED REG.	37.1	161.6
IC152	IC-POS.FIXED REG.	49.5	168.6
IC201	IC-DECODER	22.4	46.0
IC203	IC-EEPROM	21.2	24.3
IC204	IC-ANALOG SWITCH	11.7	25.1
IC205	IC-VOL. DETECTOR	28.9	24.6
IC206	IC-ANALOG SWITCH	49.4	69.2
IC207	IC-VIDEO SWITCH	48.6	54.2
IC401	IC-VIDEO PROCESS	69.0	111.6
IC402	IC-DRAM	83.8	135.5
IC403	IC-DRAM	96.7	114.9
IC501	IC-SOUND PROCESSOR	121.1	148.7
IC601	IC-AUDIO AMP	145.6	34.1
IC651	IC-AUDIO AMP	148.0	146.7
IC802	IC-POS.FIXED REG.	57.3	160.9
TRANSISTOR			
Q101	TR-SMALL SIGNAL	18.2	149.9
Q102	TR-SMALL SIGNAL	7.2	98.4
Q103	TR-SMALL SIGNAL	14.1	149.9
Q201	TR-SMALL SIGNAL	8.4	33.5
Q203	TR-SMALL SIGNAL	8.7	38.6
Q401	TR-SMALL SIGNAL	19.4	101.8
Q402	TR-SMALL SIGNAL	19.4	97.2
Q403	TR-SMALL SIGNAL	29.4	99.6
Q551	TR-SMALL SIGNAL	148.8	138.0
Q552	TR-SMALL SIGNAL	12.1	166.2
Q601	TR-SMALL SIGNAL	106.4	62.3
Q602	TR-SMALL SIGNAL	100.9	65.1
Q701	TR-SMALL SIGNAL	137.8	117.2
Q921	TR-SMALL SIGNAL	148.0	29.0
Q922	TR-SMALL SIGNAL	151.4	33.2
Q970	TR-SMALL SIGNAL	58.7	49.3

Memo

1 Precautions

Follow these safety, servicing and ESD precautions to prevent damage and to protect against potential hazards such as electrical shock.

1-1 Safety Precautions

1-1-1 Warnings

1. For continued safety, do not attempt to modify the circuit board.
2. Disconnect the AC power and DC Power Jack before servicing.

1-1-2 Servicing the LCD Monitor

1. When servicing the LCD_TV Disconnect the AC line cord from the AC outlet.
2. It is essential that service technicians have an accurate voltage meter available at all times. Check the calibration of this meter periodically.

1-1-3 Fire and Shock Hazard

Before returning the LCD_TV to the user, perform the following safety checks:

1. Inspect each lead dress to make certain that the leads are not pinched or that hardware is not lodged between the chassis and other metal parts in the LCD_TV.
2. Inspect all protective devices such as nonmetallic control knobs, insulating materials, cabinet backs, adjustment and compartment covers or shields, isolation resistor-capacitor networks, mechanical insulators, etc.

3. Leakage Current Hot Check (Figure 1-1):

WARNING: Do not use an isolation transformer during this test.

Use a leakage current tester or a metering system that complies with American National Standards Institute (ANSI C101.1, *Leakage Current for Appliances*), and Underwriters Laboratories (UL Publication UL1410, 59.7).

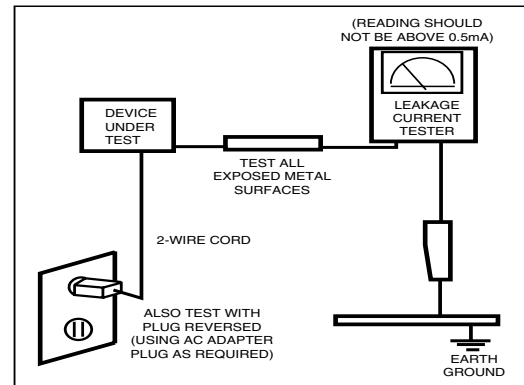


Figure 1-1. Leakage Current Test Circuit

4. With the unit completely reassembled, plug the AC line cord directly into a 120V AC outlet. With the unit's AC switch first in the ON position and then OFF, measure the current between a known earth ground (metal water pipe, conduit, etc.) and all exposed metal parts, including: metal cabinets, screwheads and control shafts. The current measured should not exceed 0.5 milliamp. Reverse the power-plug prongs in the AC outlet and repeat the test.

1-1-4 Product Safety Notices

Some electrical and mechanical parts have special safety-related characteristics which are often not evident from visual inspection. The protection they give may not be obtained by replacing them with components rated for higher voltage, wattage, etc. Parts that have special safety characteristics are identified by ⚠ on schematics and parts lists. A substitute replacement that does not have the same safety characteristics as the recommended replacement part might create shock, fire and / or other hazards. Product safety is under review continuously and new instructions are issued whenever appropriate.

1-2 Servicing Precautions

WARNING: An electrolytic capacitor installed with the wrong polarity might explode.

Caution: Before servicing units covered by this service manual, read and follow the Safety Precautions section of this manual.

Note: If unforeseen circumstances create conflict between the following servicing precautions and any of the safety precautions, always follow the safety precautions.

1-2-1 General Servicing Precautions

1. Always unplug the unit's AC power cord from the AC power source and disconnect the DC Power Jack before attempting to:
 - (a) remove or reinstall any component or assembly,
 - (b) disconnect PCB plugs or connectors, (c) connect a test component in parallel with an electrolytic capacitor.
2. Some components are raised above the printed circuit board for safety. An insulation tube or tape is sometimes used. The internal wiring is sometimes clamped to prevent contact with thermally hot components. Reinstall all such elements to their original position.
3. After servicing, always check that the screws, components and wiring have been correctly reinstalled. Make sure that the area around the serviced part has not been damaged.
4. Check the insulation between the blades of the AC plug and accessible conductive parts (examples: metal panels, input terminals and earphone jacks).
5. Insulation Checking Procedure: Disconnect the power cord from the AC source and turn the power switch ON. Connect an insulation resistance meter (500 V) to the blades of the AC plug.
The insulation resistance between each blade of the AC plug and accessible conductive parts (see above) should be greater than 1 megohm.
6. Always connect a test instrument's ground lead to the instrument chassis ground before connecting the positive lead; always remove the instrument's ground lead last.

1-3 Electrostatically Sensitive Devices (ESD) Precautions

Some semiconductor (solid state) devices can be easily damaged by static electricity. Such components are commonly called Electrostatically Sensitive Devices (ESD). Examples of typical ESD are integrated circuits and some field-effect transistors. The following techniques will reduce the incidence of component damage caused by static electricity.

1. Immediately before handling any semiconductor components or assemblies, drain the electrostatic charge from your body by touching a known earth ground. Alternatively, wear a discharging wrist-strap device. To avoid a shock hazard, be sure to remove the wrist strap before applying power to the monitor.
2. After removing an ESD-equipped assembly, place it on a conductive surface such as aluminum foil to prevent accumulation of an electrostatic charge.
3. Do not use freon-propelled chemicals. These can generate electrical charges sufficient to damage ESDs.
4. Use only a grounded-tip soldering iron to solder or desolder ESDs.
5. Use only an anti-static solder removal device. Some solder removal devices not classified as "anti-static" can generate electrical charges sufficient to damage ESDs.
6. Do not remove a replacement ESD from its protective package until you are ready to install it. Most replacement ESDs are packaged with leads that are electrically shorted together by conductive foam, aluminum foil or other conductive materials.
7. Immediately before removing the protective material from the leads of a replacement ESD, touch the protective material to the chassis or circuit assembly into which the device will be installed.
Caution: Be sure no power is applied to the chassis or circuit and observe all other safety precautions.
8. Minimize body motions when handling unpackaged replacement ESDs. Motions such as brushing clothes together, or lifting your foot from a carpeted floor can generate enough static electricity to damage an ESD.

2 Product Specifications

2-1 Specifications

Item	Description	
LCD Panel	TFT-LCD panel, RGB vertical stripe, normaly white, 20-Inch viewable, 0.64 mm pixel pitch	
Display Colors	16.7 Million colors	
Maximum Resolution	Horizontal : 640 Pixels Vertical : 480 Pixels	
Input Video Signal	Analog 0.7 Vp-p \pm 5% positive at 75 Ω , internally terminated	
Input Sync Signal	Type : Seperate H/V Level : TTL level	
Maximum Pixel Clock rate	80 MHz	
Active Display Horizontal/Vertical	408 mm(H) / 306 mm(V)	
AC power voltage & Frequency	AC 100 ~ 250 Volts, 50 Hz ~ 60 Hz	
Power Consumption	65 W	
Dimensions (W x D x H) Set Package	23.4 x 9.9 x 19.3 Inches (594 x 252 x 489.5 mm) / 23.4 x 3.5 x 16.8 Inches (594 x 90 x 427 mm) 27.6 x 11.5 x 22.2 Inches (700 x 293 x 563 mm)	
Weight (Set/Package)	9.81 Kg (21.62 lbs) / 11.5 Kg (25.4 lbs)	
Environmental Considerations	Operating Temperature : 50 °F ~ 104 °F (10 °C ~ 40 °C) Operating Humidity : 10 % ~ 80 % Storage Temperature : -4 °F ~ 113 °F (-20 °C ~ 45 °C) Storage Humidity : 5 % ~ 95 %	
TV System	Tunning	Frequency Synthesize
	System	NTSC-M
	Sound	STEREO
Antena Input	75 Ω , Coaxial Cable	
Sound Characteristic	– MAX Internal speaker Output : Right => 3W Left => 3W	
	– BASS Control Range : -12 dB~ + 12 dB – TREBLE Control Range : -12 dB~ + 12 dB – Headphone Out: 5mW max (400m Vrms) – Output Frequency : RF => 80 Hz ~ 15 kHz A/V => 80 Hz ~ 15 kHz	

2-2 Pin Assignments

2-2-1 DVD

RCA Green	Y
	GND
RCA Blue	Pb (Cb)
	GND
RCA Red	Pr (Cr)
	GND
RCA White	Audio L
	GND
RCA Red	Audio R
	GND

2-2-2 S-Video

Pin	Separate
1	GND
2	Y
3	C
4	GND
5	GND

2-2-3 A/V

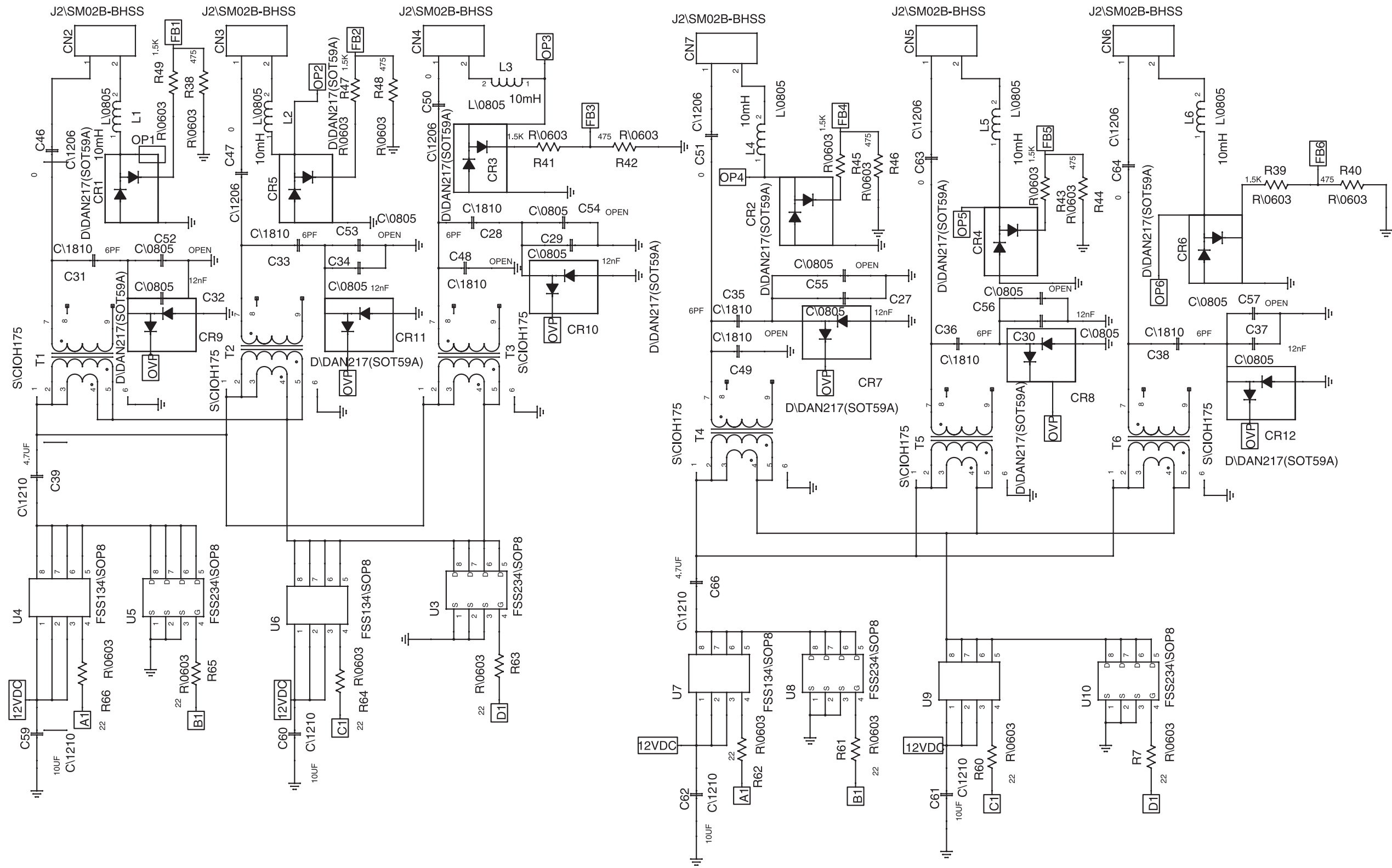
RCA Yellow	CVBS
RCA White	Audio L
	GND
RCA Red	Audio R
	GND

* This Document can not be used without Samsung's authorization.

LTP2035

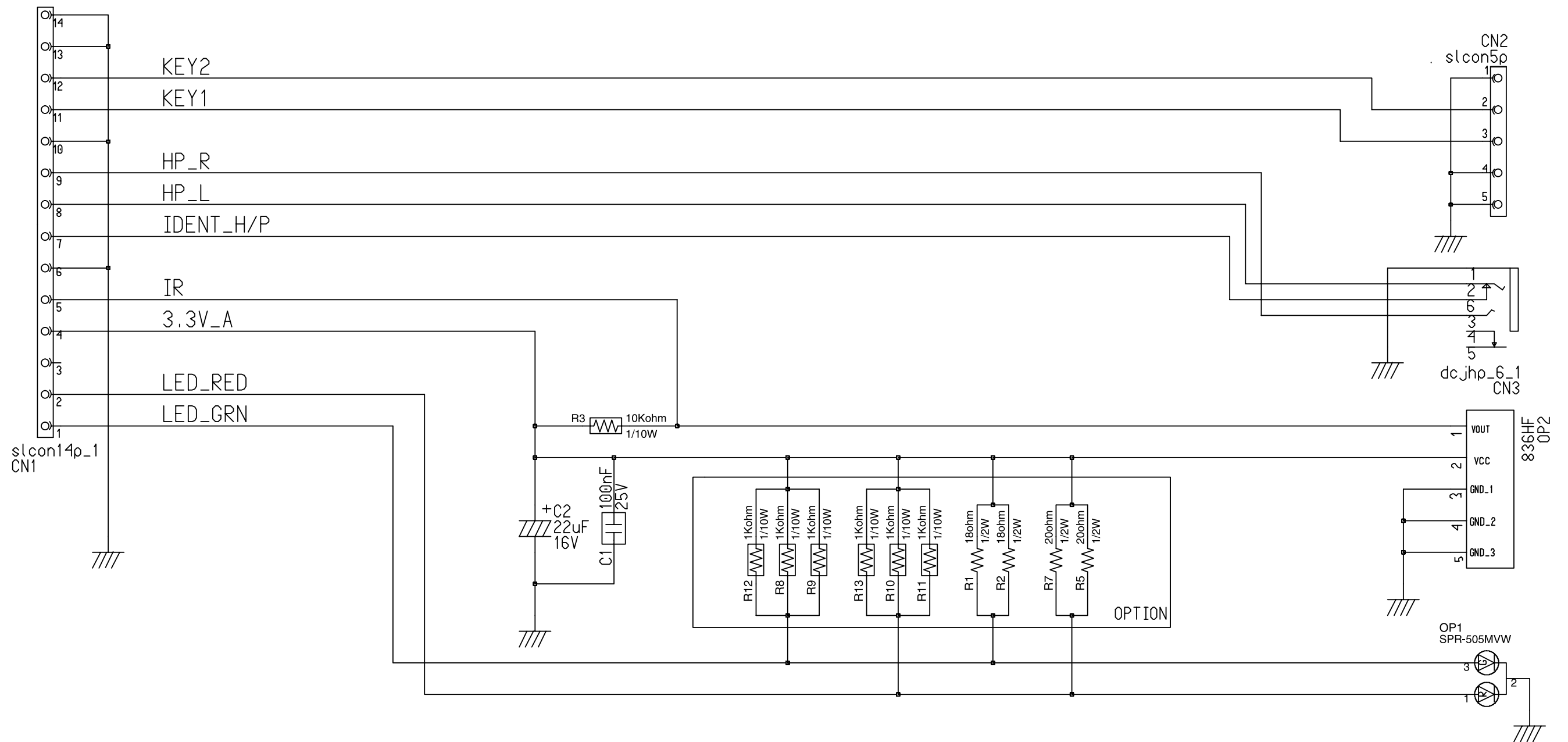
* This Document can not be used without Samsung's authorization.

11-4 Inverter Schematic Circuit



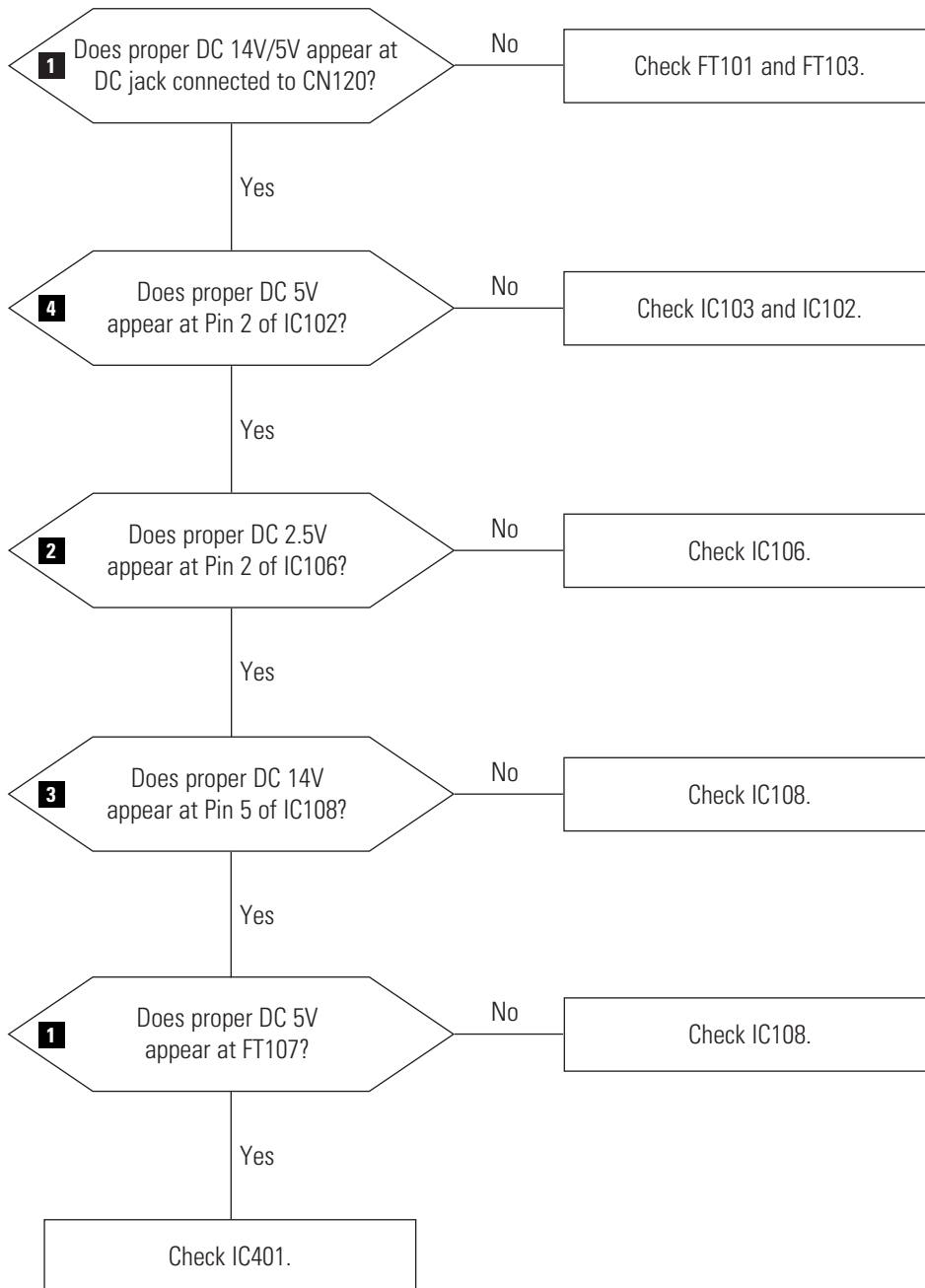
* This Document can not be used without Samsung's authorization.

11-6 IR board Schematic Diagram

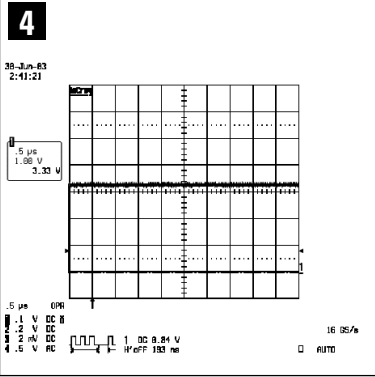
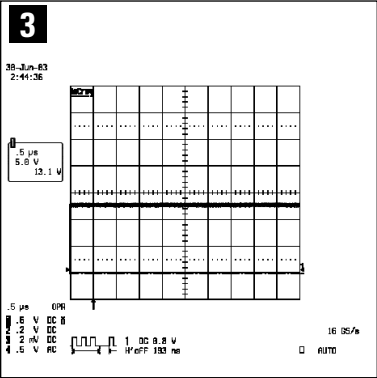
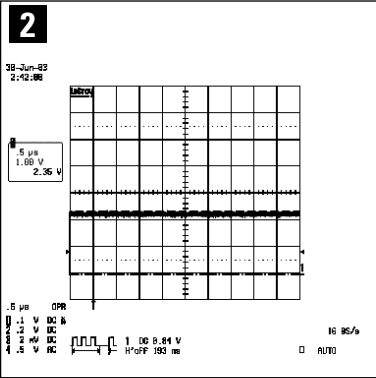
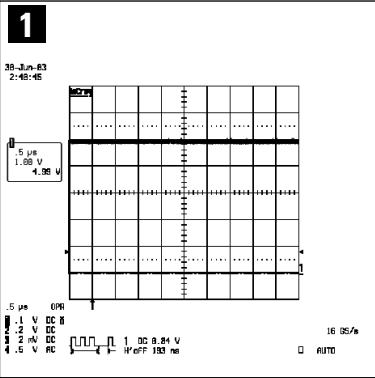


5 Troubleshooting

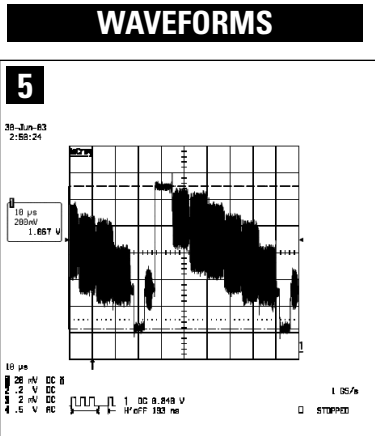
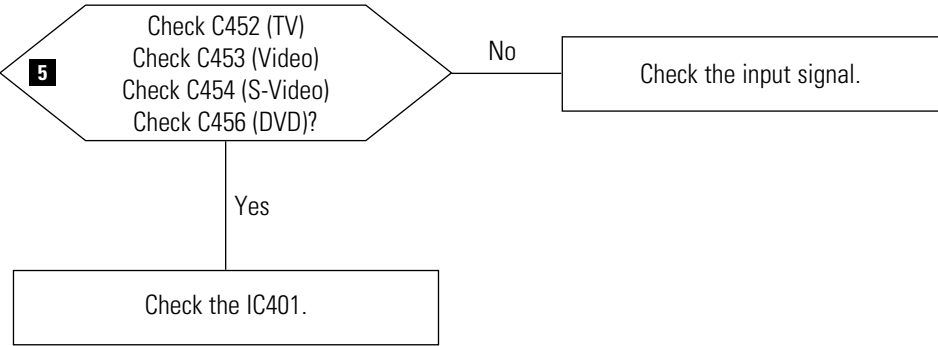
5-1 No Power

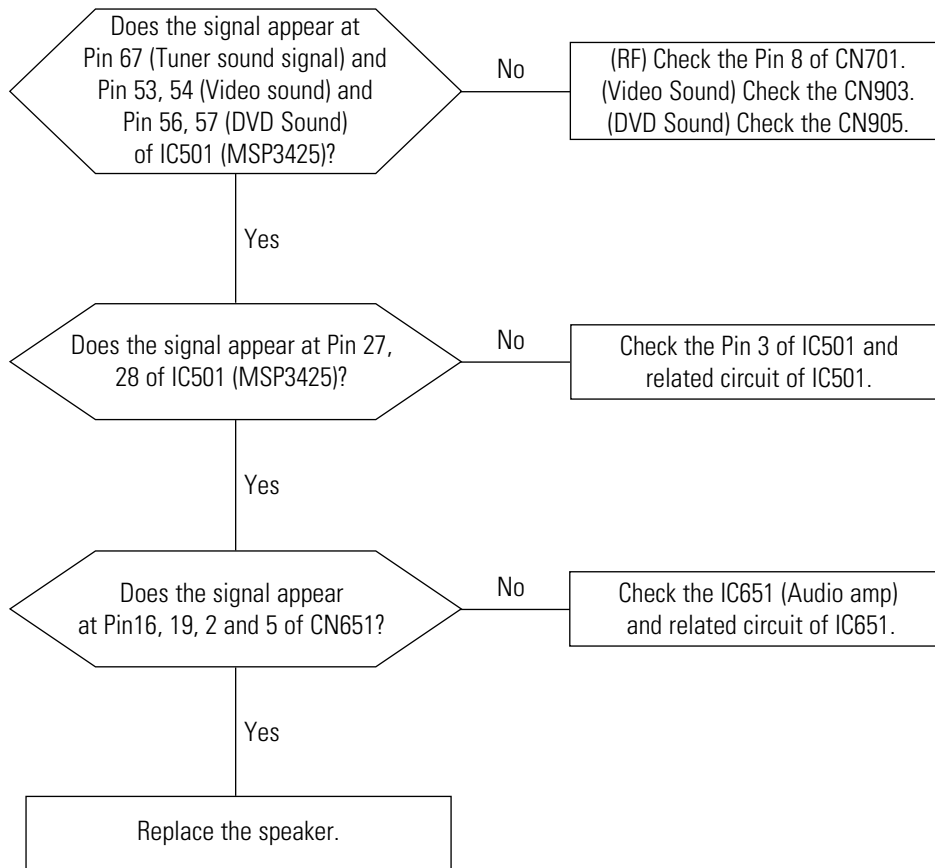


WAVEFORMS

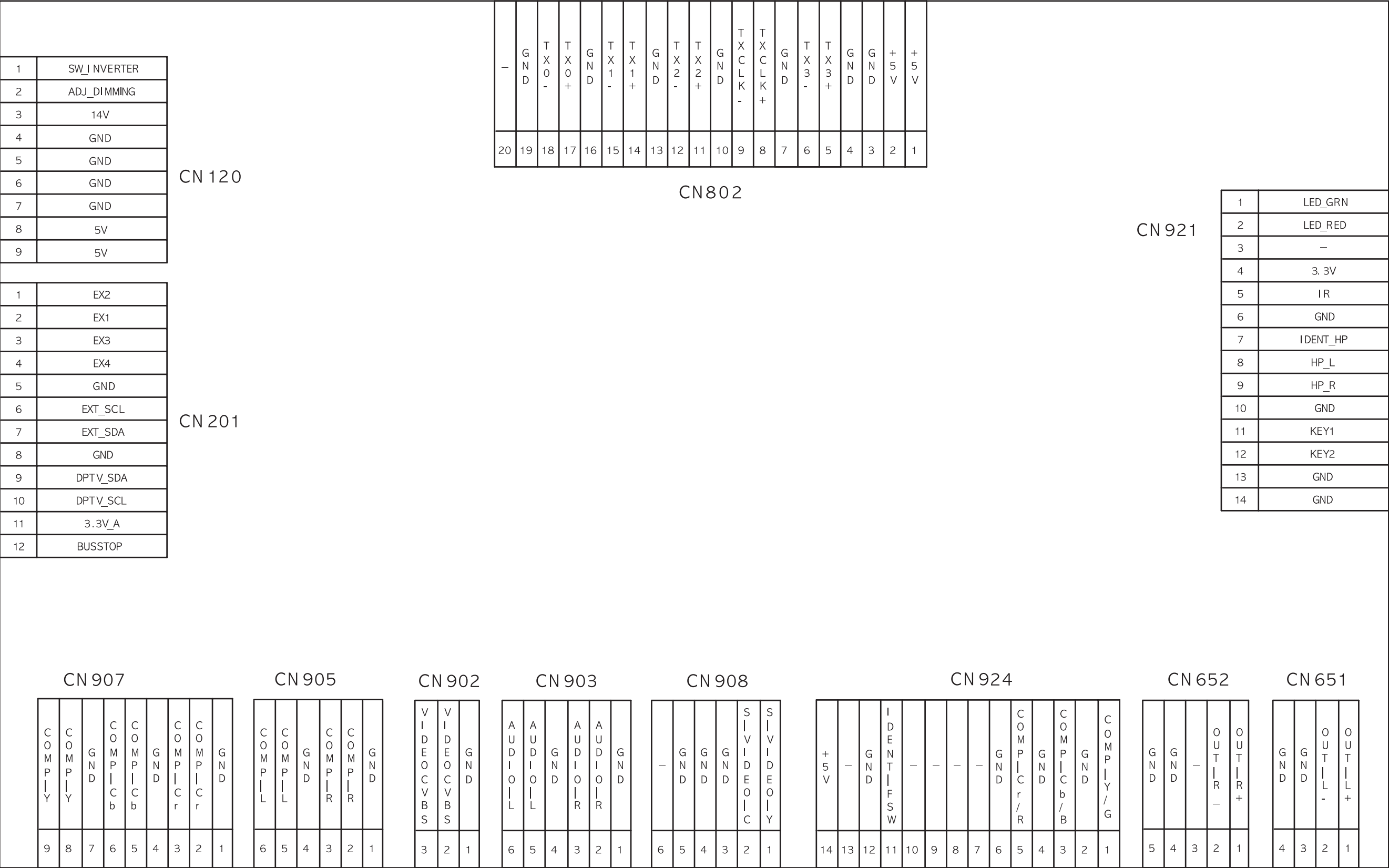


5-2 No Picture (TV, Video, S-Video, DVD)



5-3 No Sound

9 Wiring Diagram



Memo