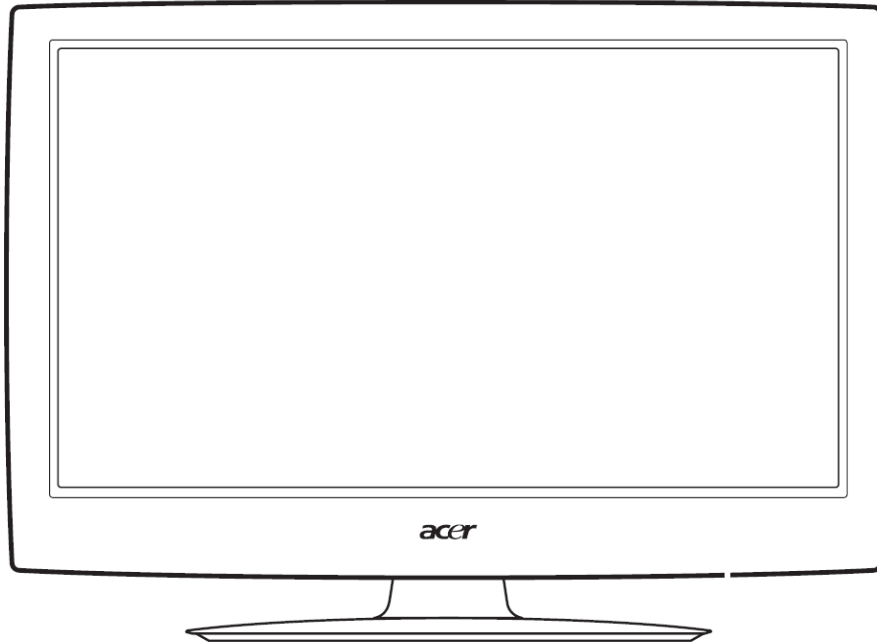


acer



**Acer AT2058ML&AT2358ML&AT2358MWL
Service Guide**

Copyright

Copyright 2010 Acer Technology Corp.

All rights reserved.

This manual may not, in whole or in part, be copied, photocopied, reproduced, translated, or converted to any electronic machine readable form without prior written permission of Acer Technology Corp.

ACER AT2058ML&AT2358ML&AT2358MWL Service Manual. Printed in Fujian.

Disclaimer

The information in this guide is subject to change without notice. Acer Incorporated makes no representations or warranties, either expressed or implied, with respect to the contents hereof and specifically disclaims any warranties of merchantability or fitness for any particular purpose. Any Acer Incorporated software described in this manual is sold or licensed "as is". Should the programs prove defective following their purchase, the buyer (and not Acer Incorporated, its distributor, or its dealer) assumes the entire cost of all necessary servicing, repair, and any incidental or consequential damages resulting from any defect in the software.

Acer is a registered trademark of Acer Corporation.

Intel is a registered trademark of Intel Corporation.

Pentium and Pentium II/III are trademarks of Intel Corporation.

Other brand and product names are trademarks and/or registered trademarks of their respective holders.

Trademarks

All other trademarks are property of their respective owners.

Conventions

The following conventions are used in this manual:

Screen messages	Denotes actual messages that appear on screen.
NOTE	Gives bits and pieces of additional information related to the current topic.
WARNING	Alerts you to any damage that might result from doing or not doing specific actions.
CAUTION	Gives precautionary measures to avoid possible hardware or software problems.
IMPORTANT	Remind you to do specific actions relevant to the accomplishment of procedures.

Preface

Before using this information and the product it supports, please read the following general information.

1. This Service Guide provides you with all technical information relating to the BASIC CONFIGURATION decided for Acer's "global" product offering. To better fit local market requirements and enhance product competitiveness, your regional office may have decided to extend the functionality of a machine (e.g. add-on card, modem, or extra memory capability). These LOCALIZED FEATURES will NOT be covered in this generic service guide. In such cases, please contact your regional offices or the responsible personnel/channel to provide you with further technical details.
2. Please note WHEN ORDERING FRU PARTS, that you should check the most up-to-date information available on your regional web or channel. If, for whatever reason, a part number change is made, it will not be noted in the printed Service Guide. For ACER-AUTHORIZED SERVICE PROVIDERS, your Acer office may have a DIFFERENT part number code to those given in the FRU list of this printed Service Guide. You MUST use the list provided by your regional Acer office to order FRU parts for repair and service of customer machines.

Warning: (For FCC Certified Models)

Note: This equipment has been tested and found to comply with the limits for a Class B digital device, pursuant to Part 15 of the FCC Rules. These limits are designed to provide reasonable protection against harmful interference in a residential installation. This equipment generates uses and can radiate radio frequency energy, and if not installed and used in accordance with the instructions, may cause harmful interference to radio communications. However, there is no guarantee that interference will not occur in a particular installation. If this equipment does cause harmful interference to radio or television reception, which can be determined by turning the equipment off and on, the user is encouraged to try to correct the interference by one or more of the following measures:

1. Reorient or relocate the receiving antenna.
2. Increase the separation between the equipment and receiver.
3. Connect the equipment into an outlet on a circuit different from that to which the receiver is connected.
4. Consult the dealer or an experienced radio/TV technician for help.

Notice:

1. The changes or modifications not expressly approved by the party responsible for compliance could void the user's authority to operate the equipment.
2. Shielded interface cables and AC power cord, if any, must be used in order to comply with the emission limits.
3. The manufacturer is not responsible for any radio or TV interference caused by unauthorized modification to this equipment. It is the responsibility of the user to correct such interference.

As ENERGY STAR® Partner our company has determined that this product meets the ENERGY STAR® guidelines for energy efficiency.

Warning:

To prevent fire or shock hazard, do not expose the monitor to rain or moisture. Dangerous high voltages are present inside the monitor. Do not open the cabinet. Refer servicing to qualified personnel only.

Precautions

- Do not use the monitor near water, e.g. near a bathtub, washbowl, kitchen sink, laundry tub, swimming pool or in a wet basement.
- Do not place the monitor on an unstable trolley, stand, or table. If the monitor falls, it can injure a person and cause serious damage to the appliance. Use only a trolley or stand recommended by the manufacturer or sold with the monitor. If you mount the monitor on a wall or shelf, use a mounting kit approved by the manufacturer and follow the kit instructions.
- Slots and openings in the back and bottom of the cabinet are provided for ventilation. To ensure reliable operation of the monitor and to protect it from overheating, be sure these openings are not blocked or covered. Do not place the monitor on a bed, sofa, rug, or similar surface. Do not place the monitor near or over a radiator or heat register. Do not place the monitor in a bookcase or cabinet unless proper ventilation is provided.
- The monitor should be operated only from the type of power source indicated on the label. If you are not sure of the type of power supplied to your home, consult your dealer or local power company.
- The monitor is equipped with a three-pronged grounded plug, a plug with a third (grounding) pin. This plug will fit only into a grounded power outlet as a safety feature. If your outlet does not accommodate the three-wire plug, have an electrician install the correct outlet, or use an adapter to ground the appliance safely. Do not defeat the safety purpose of the grounded plug.
- Unplug the unit during a lightning storm or when it will not be used for long periods of time. This will protect the monitor from damage due to power surges.
- Do not overload power strips and extension cords. Overloading can result in fire or electric shock.
- Never push any object into the slot on the monitor cabinet. It could short circuit parts causing a fire or electric shock. Never spill liquids on the monitor.
- Do not attempt to service the monitor yourself; opening or removing covers can expose you to dangerous voltages and other hazards. Please refer all servicing to qualified service personnel
- To ensure satisfactory operation, use the monitor only with UL listed computers which have appropriate configured receptacles marked between 100 - 240V AC, Min. 5A.
- The wall socket shall be installed near the equipment and shall be easily accessible.

Special Notes on TV

The following symptoms are normal with TV and do not indicate a problem.

Notes

- Due to the nature of the fluorescent light, the screen may flicker during initial use. Turn off the Power Switch and then turn it on again to make sure the flicker disappears.
- You may find slightly uneven brightness on the screen depending on the desktop pattern you use.
- The TV screen has effective pixels of 99.99% or more. It may include blemishes of 0.01% or less such as a missing pixel or a pixel lit all of the time.
- Due to the nature of the TV screen, an afterimage of the previous screen may remain after switching the image, when the same image is displayed for hours. In this case, the screen is recovered slowly by changing the image or turning off the Power Switch for hours.

Table of Contents

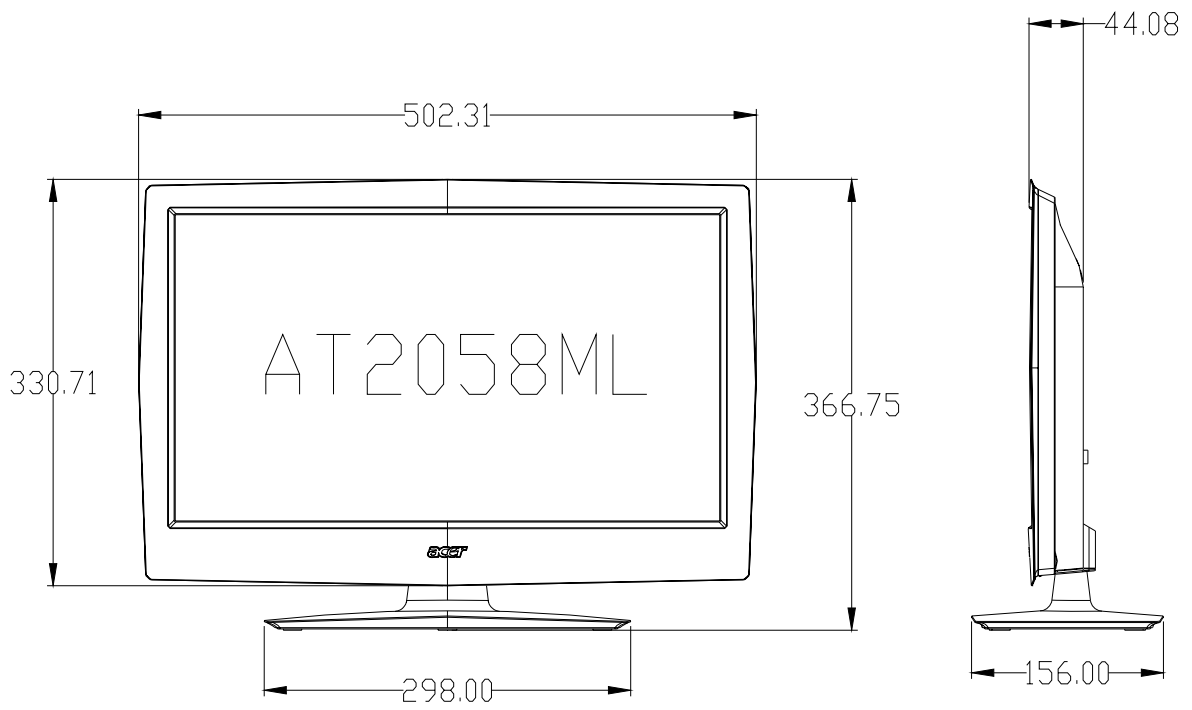
Chapter 1	Monitor Features	7
	General Specifications	7
	TV Description	10
	Precautions and Notices	10
	D-SUB / HDMI Digital Connector	11
	Factory Preset Display Modes	12
	TV Panel Specification	13
	General Specifications	13
	Electrical Specifications	14
	Optical Specifications	16
Chapter 2	Connecting Peripherals	18
	Front Panel Controls	18
Chapter 3	Remote Control & OSD Operating Instructions	20
	Using the Remote Control	20
	Using the OSD Menus	22
Chapter 4	Machine Disassembly	33
Chapter 5	Trouble Shooting	38
Chapter 6	Upgrade Firmware	45
Chapter 7	White-Balance, Luminance Adjustment	47
Chapter 8	FRU (Field Replaceable Unit) List	48
	Exploded Diagram	48
	EDID Data	53
Chapter 9	PCB Layout	54
Chapter 10	Schematic Diagram	60

General Specifications

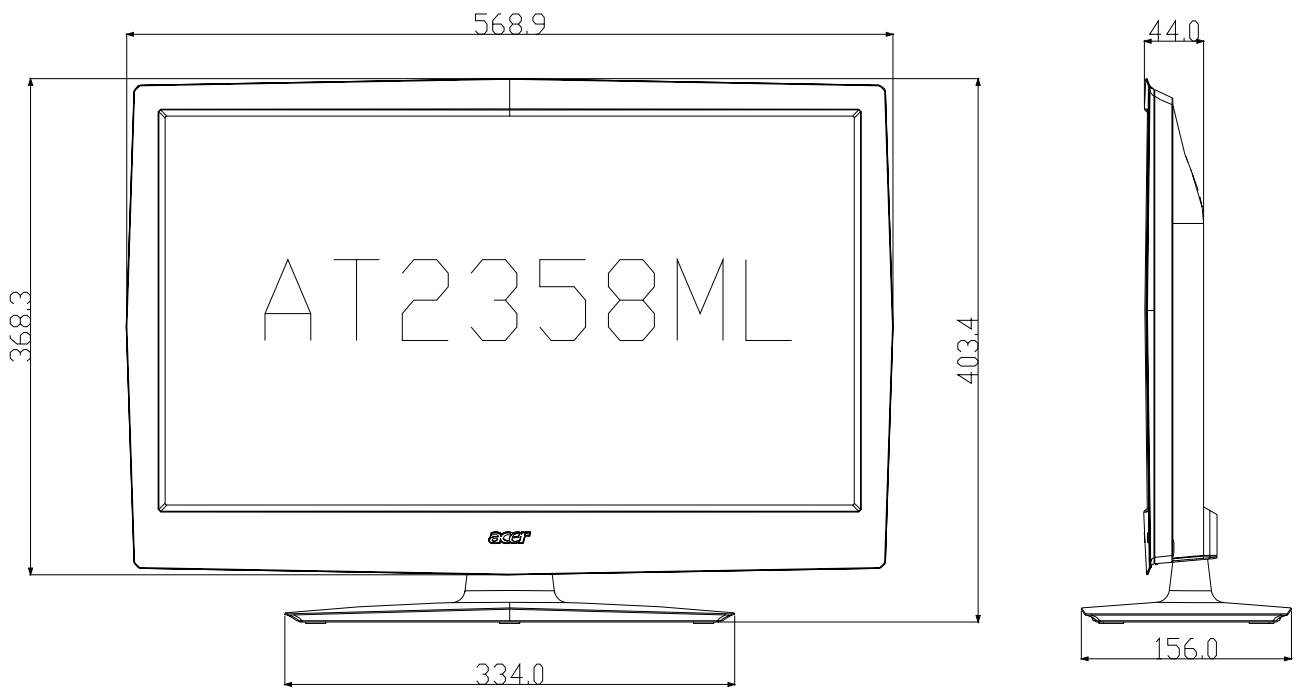
Model	AT2058ML	AT2358ML/AT2358MWL
Panel spec		
Resolution (pixels)	1600 x 900	1920 x 1080
Brightness (typ.)	250 nit	
Contrast Ratio (typ.)	1000:1	
Dynamic Contrast Ratio (max.)	InfiniteCons	
Viewing angle (typ.)	170x160(CR>=10)	
Response (typ.)	5 ms (Gray to Gray)	
Power supply		
Input	100VAC~220VAC, 50/60 Hz	
Max. power consumption	50W	
Power saving	<1 W	
Mechanical		
Dimensions (W x H x D mm)	502.3 x 366.7 x 156	572.2 x 405.8 x 156
Weight (kg)	3.47	4.49
Weight (lbs.)	7.67	10.79
Gross weight (Kg)	4.9	6.2
Gross weight (lbs)	10.83	13.7
Wall-mounting holes	VESA, 75mm x 75mm	
Analog TV system		
Colour system	PAL, SECAM	
Sound system	B/G/D/K/I/L	
Stereo system	NICAM/A2	
Subtitle	Teletext 1.5 (1000 pages)	
Digital TV system		
Digital TV standard	DVB-T HD (H.264)/DVB-C	
Sound system	ISO11172-3 layer1 & layer2 32KHz, 44.1KHz, 48KHz	
Stereo system	MPEG (Layer I & II), HE-AAC Dolby AC-3/AC-3 +	
Frequency	7/8 MHz	

Model	AT2058ML	AT2358ML/AT2358MWL
Terminal		
Analog/Digital Tuner In	Hybrid	
SCART	CVBS (In/Out), RGB (In), Audio R/L	
Component in	YPbPr, Audio (R/L)	
AV-in	CVBS, S Video, Audio (R/L)	
AV-out	CVBS, Audio (R/L)	
HDMI 1	Yes (HDMI 1.3)	
HDMI 2	Yes (HDMI 1.3)	
PC D-sub in	Yes	
PC audio in	Yes	
SPDIF out	Yes (Coaxial)	
Headphone out	Yes	
USB Port	Yes	
Resolution		
HDMI	480i/p, 576i/p, 720p, 1080i	480i/p, 576i/p, 720p, 1080i, 1080p
Audio system		
Speakers	5 W + 5 W	
Multimedia support via USB		
Photo	JPG, BMP, PNG	
Audio	MP3, AAC	
Video	MPEG-2, H.264	

AT2058ML



AT2358ML & AT2358MWL



TV Description

The TV will contain a main board, a converter board, a function key board, a LED board and an IR board. The main board and converter board will house the flat panel to control logic I²C bus, DDC, brightness control logic for LCD panel, DC-DC conversion to supply the appropriate power to the whole board and transmitting TTL level signals into LCD Module to drive the LCD display circuit.

The converter board will drive the LED backlight.

The function keyboard and Remote Control will provide the OSD control signal to the Main Board.

Precautions and Notices

1-1 Assembly Precaution

- (1) Please do not press or scratch LCD panel surface with anything hard. And do not soil LCD panel surface by touching with bare hands (Polarize film, surface of LCD panel is easy to be flawed)
In the LCD panel, the gap between two glass plates is kept perfectly even to maintain display characteristic and reliability. If this panel is subject to hard pressing, the following occurs:
 - (a) Uniform color
 - (b) Orientation of liquid crystal becomes disorder
- (2) Please wipe out LCD panel surface with absorbent cotton or soft cloth in case of it being soiled.
- (3) Please wipe out drops of adhesive like saliva and water in LCD panel surface immediately.
They might damage to cause panel surface variation and color change.
- (4) Do not apply any strong mechanical shock to the LCD panel.

1-2 Operating Precaution

- (1) Please be sure to unplug the power cord before remove the back-cover. (Be sure the power is turn-off)
- (2) Please do not change variable resistance settings in MAIN-BOARD; they are adjusted to the most suitable value. If they are changed, it might happen LUMINANCE does not satisfy the white balance spec.
- (3) Please consider that LCD backlight takes longer time to become stable of radiation characteristic in low temperature than in room temperature.
- (4) Please pay attention to displaying the same pattern for very long-time. Image might stick on LCD.

1-3 Storage Precaution

- (1) When you store LCD for a long time, it is recommended to keep the temperature between -20°C - 60°C without the exposure of sunlight and to keep the humidity less than 85% RH.
- (2) Please do not leave the LCD in the environment of high humidity and high temperature such as 60°C, 95%RH.
- (3) Please do not operate the LCD in the environment of abnormal temperature, below 0°C.

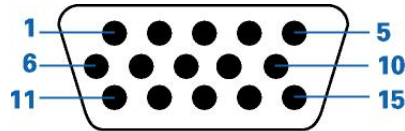
1-4 High Voltage Warning

The high voltage was only generated by Power support part, if carelessly contacted the transformer on this module, can cause a serious shock.

D-SUB Pin Distribution

This procedure gives you instructions for installing and using the TV display.

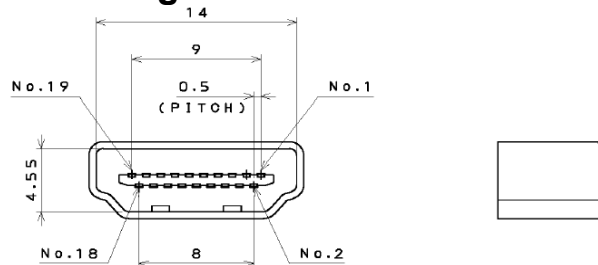
- (1) Position the display on the desired operation and plug the power cord into a convenient AC outlet. Three-wire power cord must be shielded and is provided as a safety precaution as it connects the chassis and cabinet to the electrical conduct ground. If the AC outlet in your location does not have provisions for the grounded type plug, the installer should attach the proper adapter to ensure a safe ground potential.
- (2) Connect the 15-pin color display shielded signal cable to your signal system device and lock both screws on the connector to ensure firm grounding. The connector information is as follow:



15 - Pin Color Display Signal Cable

Pin No.	Description	Pin No.	Description
1	Red	9	+5V (Supply from PC)
2	Green	10	Sync GND
3	Blue	11	NC
4	NC	12	Bi-directional data(SDA)
5	GND	13	H-sync
6	Red GND	14	V-sync (vclk)
7	Green GND	15	Data clock(SCL)
8	Blue GND		

HDMI Digital Connector Pin Assignments



Pin No.	Description	Pin No.	Description
1	TMDS Data2+	2	TMDS Data2 Shield
3	TMDS Data2-	4	TMDS Data1+
5	TMDS Data1 Shield	6	TMDS Data1-
7	TMDS Data0+	8	TMDS Data0 Shield
9	TMDS Data0-	10	TMDS Clock+
11	TMDS Clock Shield	12	TMDS Clock-
13	CEC	14	Reserved (N.C. on device)
15	SCL	16	SDA
17	DDC/CEC Ground	18	+5V Power
19	Hot Plug Detect		

Factory Preset Display Modes:

AT2058ML

Item	H.Freq. (KHz)	Mode	Resolution	V.Freq. (Hz)
1	31.469	IBM VGA 12H	640x480	59.94
2	35.156	VESA	800x600	56.25
3	37.879	VESA	800x600	60.317
4	48.363	VESA	1024x768	60.004
5	44.772	HD	1280x720	59.855
6	44.776	CVT 2.3MA	1280x768	60
7	47.712	VESA	1360x768	60
8	55.54	VESA	1600x900	59.987

AT2358ML&AT2358MWL

Item	H.Freq. (KHz)	Mode	Resolution	V.Freq. (Hz)
1	31.469	IBM VGA 12H	640x480	59.94
2	35.156	VESA	800x600	56.25
3	37.879	VESA	800x600	60.317
4	48.363	VESA	1024x768	60.004
5	44.772	HD	1280x720	59.855
6	44.776	CVT 2.3MA	1280x768	60
7	47.712	VESA	1360x768	60
8	63.981	VESA	1280x1024	60
9	66.587	FHD	1920x1080	60

TV Panel Specification

AT2058ML

LM200WD3-TLA1 is a Color Active Matrix Liquid Crystal Display with an integral Light Emitting Diode(LED) backlight system. The matrix employs a-Si Thin Film Transistor as the active element. It is a transmissive type display operating in the normally white mode. It has a 20.0 inch diagonally measured active display area with HD+ resolution (900 vertical by 1600 horizontal pixel array) Each pixel is divided into Red, Green and Blue sub-pixels or dots which are arranged in vertical stripes. Gray scale or the brightness of the sub-pixel color is determined with an 8-bit gray scale signal for each dot, thus, presenting a palette of more than 16.7M colors with Advanced-FRC (Frame Rate Control). It has been designed to apply the interface method that enables low power, high speed, low EMI. FPD Link or compatible must be used as a LVDS (Low Voltage Differential Signaling) chip. It is intended to support applications where thin thickness, wide viewing angle, low power are critical factors and graphic displays are important. In combination with the vertical arrangement of the sub-pixels, the LM200WD3-TLA1 characteristics provide an excellent flat panel display for office automation products such as monitors.

AT2358ML & AT2358MWL

LM230WF5-TLA1 is a Color Active Matrix Liquid Crystal Display Light Emitting Diode (White LED) backlight system without LED driver. The matrix employs a-Si Thin Film Transistor as the active element. It is a transmissive type display operating in the normally white mode. It has a 23 inch diagonally measured active display area with FHD resolution (1080 vertical by 1920 horizontal pixel array) Each pixel is divided into Red, Green and Blue sub-pixels or dots which are arranged in vertical stripes. Gray scale or the brightness of the sub-pixel color is determined with an 8-bit gray scale signal for each dot, thus, presenting a palette of more than 16.7M colors with Advanced-FRC (Frame Rate Control). It has been designed to apply the interface method that enables low power, high speed, low EMI. FPD Link or compatible must be used as a LVDS (Low Voltage Differential Signaling) chip. It is intended to support applications where thin thickness, wide viewing angle, low power are critical factors and graphic displays are important. In combination with the vertical arrangement of the sub-pixels, the LM230WF5-TLA1 characteristics provide an excellent flat panel display for office automation products such as monitors.

General Specifications

AT2058ML

Active screen size	20.0 inches (508.05mm) diagonal
Outline Dimension	462.8(H) x 272.0(V) x 11.5(D) mm(Typ.)
Pixel Pitch	0.09225*RGB(H)mm x 0.27675(V)mm
Pixel Format	1600 horizontal By 900 vertical Pixels. RGB stripe arrangement
Interface	LVDS 2Port
Color depth	16.7M colors
Luminance, white	250 cd/m ² (Center 1Point, typ)
Viewing Angle (CR>10)	R/L 170(Typ.), U/D 160(Typ.)
Power Consumption	Total 14.5W(Typ.), (3.9W@V _{LCD} , 10.6W@I _{BL} =110mA)
Weight	1360g (Typ.)
Display operating mode	Transmissive mode, normally White
Surface treatments	Hard coating (3H), Anti-glare treatment of the front polarizer

AT2358ML& AT2358MWL

Active screen size	23 inches(58.42cm) diagonal(Aspect ratio 16:9)
Outline Dimension	533.2(H) x 312.0(V) x 11.5(D) mm(Typ.)
Pixel Pitch	0.265mm x 0.265mm
Pixel Format	1920 horizontal By 1080 vertical Pixels. RGB stripe arrangement
Interface	LVDS 2Port
Color depth	16.7M colors
Luminance, white	250 cd/m ² (Center 1Point, typ)
Viewing Angle (CR>10)	R/L 170(Typ.), U/D 160(Typ.)
Power Consumption	Total 18.95 W (Typ.), (4.5 W@V _{LCD} , 14.45 W@W/O_Driver)
Weight	1900 g (Typ.)
Display operating mode	Transmissive mode, normally White
Surface treatments	Hard coating (3H), Anti-glare treatment of the front polarizer

Electrical specifications

AT2058ML

Parameter	Symbol	Values			Unit
		Min	Typ	Max	
MODULE :					
Power Supply Input Voltage	V _{LCD}	4.5	5.0	5.5	Vdc
Permissive Power Input Ripple	V _{LCD}	-	-	0.2	V
Power Supply Input Current	I _{LCD-MOSAIC}	-	780	935	mA
	I _{LCD-BLACK}	-	950	1140	mA
Power Consumption	P _{LCD}	-	3.9	4.7	Watt
Inrush current	I _{RUSH}	-	-	3.0	A

Parameter	Symbol	Condition	Values			Unit
			Min.	Typ.	Max.	
LED :						
LED String Current	I _s		-	110	120	mA
LED String Voltage	V _s		-	48.0	51.0	V
Power Consumption	P _{array}		-	10.6	11.3	Watt
LED Life Time	LED_LT		30,000	-	-	Hrs

AT2358ML& AT2358MWL

Parameter	Symbol	Values			Unit
		Min	Typ	Max	
MODULE :					
Power Supply Input Voltage	V_{LCD}	4.5	5.0	5.5	Vdc
Permissive Power Input Ripple	V_{LCD}	-	-	0.4	V
Power Supply Input Current	$I_{LCD-MOSAIC}$	-	900	1100	mA
	$I_{LCD-BLACK}$	-	1100	1250	mA
Power Consumption	P_{LCD}	-	4.5	5.5	Watt
Inrush current	I_{RUSH}	-	-	3.0	A

Parameter	Symbol	Condition	Values			Unit
			Min.	Typ.	Max.	
LED :						
LED String Current	I_{s_peak}		-	110	120	mA
LED String Voltage	V_s		41	43.8	46.6	V
Power Consumption	P_{Bar}		13.53	14.45	15.38	Watt
LED Life Time	LED_LT		30,000	-	-	Hrs

Optical Specifications
AT2058ML

Ta= 25°C, V_{LCD}=5.0V, f_v=60Hz f_{CLK}=48.9MHz

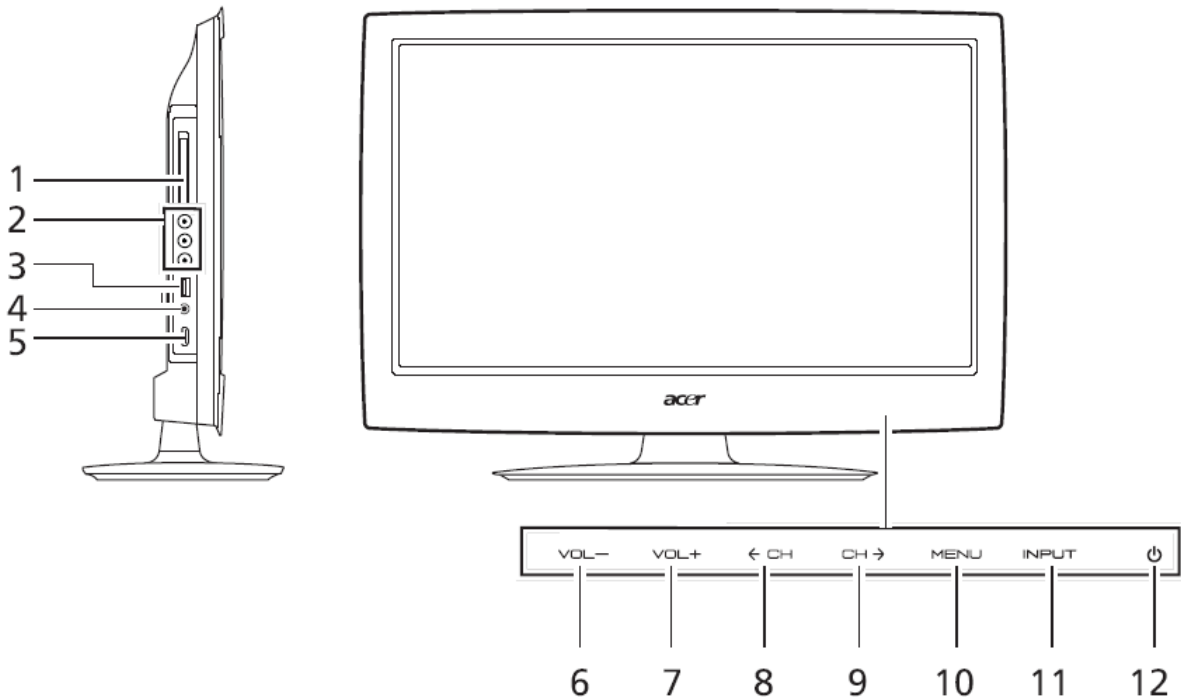
Parameter		Symbol	Values			Units
			Min	Typ	Max	
Contrast Ratio		CR	700	1000	-	
Surface Luminance, white		L _{WH}	200	250	-	cd/m ²
Luminance Variation		δ _{WHITE} 9P	75	-	-	%
Response Time	Rise Time	Tr _R	-	1.1	2.6	ms
	Decay Time	Tr _D	-	3.9	7.4	ms
Color Coordinates [CIE1931] (By PR650)	RED	Rx	Typ -0.03	0.631	Typ +0.03	
		Ry		0.349		
	GREEN	Gx		0.341		
		Gy		0.622		
	BLUE	Bx		0.152		
		By		0.058		
	WHITE	Wx		0.313		
		Wy		0.329		
Color Gamut			-	68	-	%
Viewing Angle (CR>5)						
	x axis, right(φ=0°)	θ _r	75	88	-	Degree
	x axis, left (φ=180°)	θ _l	75	88	-	
	y axis, up (φ=90°)	θ _u	70	85	-	
	y axis, down (φ=270°)	θ _d	70	85	-	
Viewing Angle (CR>10)						
	x axis, right(φ=0°)	θ _r	70	85	-	Degree
	x axis, left (φ=180°)	θ _l	70	85	-	
	y axis, up (φ=90°)	θ _u	60	75	-	
	y axis, down (φ=270°)	θ _d	70	85	-	
Crosstalk			-	-	1.5	%
Luminance uniformity - Angular dependence (TCO'5.0)		LR	-	-	1.73	
Color grayscale linearity		Δu'v'	-	0.018	-	

AT2358ML& AT2358MWL

 Ta= 25°C, V_{LCD}=5.0V, f_V=60Hz f_{CLK}=119MHz

Parameter	Symbol	Values			Units	
		Min	Typ	Max		
Contrast Ratio	CR	700	1000	-		
Surface Luminance, white	L _{WH}	200	250	-	cd/m ²	
Luminance Variation	δ _{WHITE} 9P	75			%	
Response Time	Rise Time	Tr _R	-	1.3	2.6	ms
	Decay Time	Tr _D	-	3.7	7.4	ms
Color Coordinates [CIE1931]	RED	Rx	Typ -0.03	0.628	Typ +0.03	
		Ry		0.348		
	GREEN	Gx		0.345		
		Gy		0.615		
	BLUE	Bx		0.153		
		By		0.057		
	WHITE	Wx		0.313		
		Wy		0.329		
Viewing Angle (CR>5)						
	x axis, right(φ=0°)	θ _r	75	88		Degree
	x axis, left (φ=180°)	θ _l	75	88		
	y axis, up (φ=90°)	θ _u	70	85		
	y axis, down (φ=270°)	θ _d	70	85		
Viewing Angle (CR>10)						
	x axis, right(φ=0°)	θ _r	70	85		Degree
	x axis, left (φ=180°)	θ _l	70	85		
	y axis, up (φ=90°)	θ _u	60	75		
	y axis, down (φ=270°)	θ _d	70	85		
Crosstalk				1.5		%
Luminance uniformity - Angular dependence (TCO'03)	LR	-	-	1.7		

Front panel controls



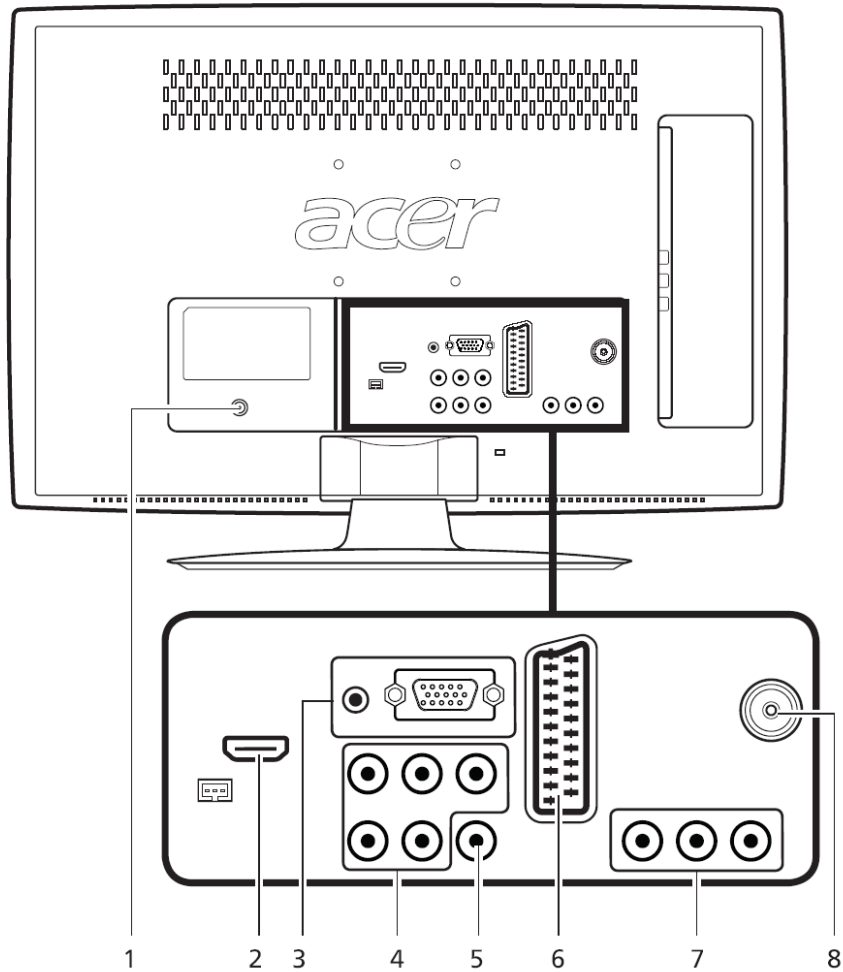
Front and side panels	
1	Common interface
2	AV in-COMPOSITE + Audio L/R
3	USB port
4	Earphone
5	HDMI port

6	Volume down	When the OSD is on, functions the same as the Left arrow.
7	Volume up	When the OSD is on, functions the same as the Right arrow.
8	Channel down	When the OSD is on, functions the same as the Down arrow.
9	Channel up	When the OSD is on, functions the same as the Up arrow.
10	Menu key	Turns the OSD menu ON and OFF.
11	Source (Input) key	Press to change input source. When the OSD is on, press this button to confirm selection.
12	Power button	



.....
The control buttons are touch-sensitive. Simply touch the area to activate the function.

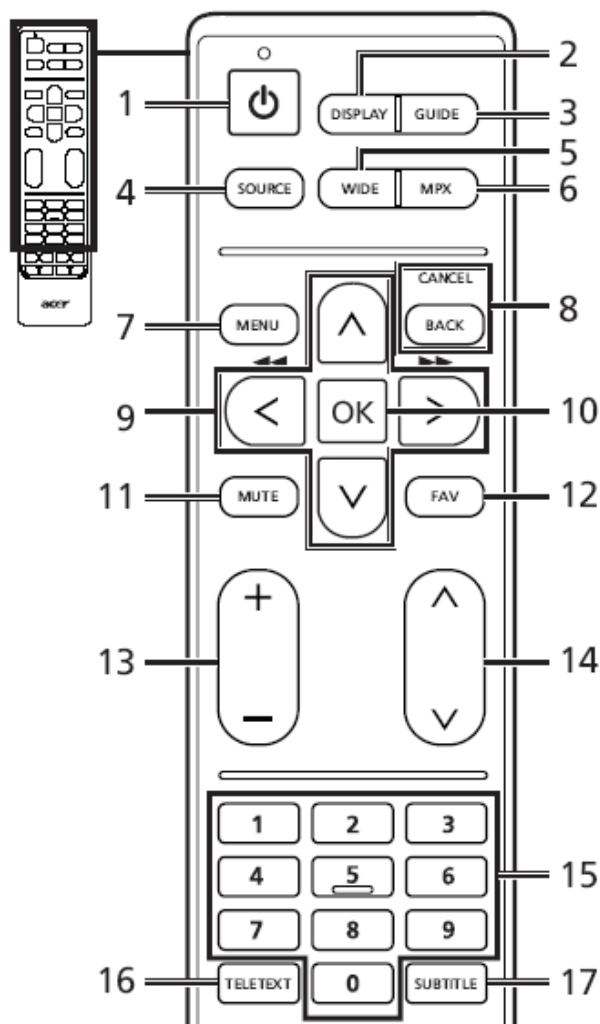
Peripheral connection guide



Rear panel view			
1	DC-in	5	SPDIF out
2	HDMI port	6	SCART
3	VGA-in + PC Audio-in	7	AV out-CVBS + Audio L/R
4	AV in-COMPONENT + Audio L/R	8	Tuner (hybrid)

Using the Remote Control

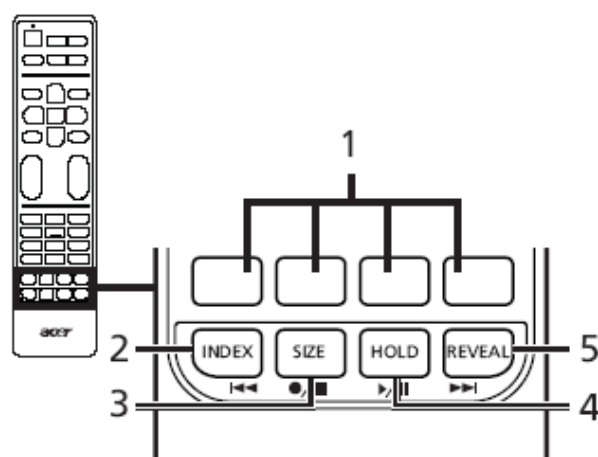
General keys



- 1 **POWER**
Press to turn your TV on/off.
- 2 **DISPLAY**
Press to display or change input/channel information (dependent on input/source type).
- 3 **GUIDE**
Press to launch Electronic Programme Guide (EPG) mode (Digital TV mode only). See page 34.
- 4 **SOURCE**
(TV/YPbPr/AV/SCART/PC/HDMI/USB)
Press to select correct input mode.

- 5 **WIDE**
Press to toggle scaling mode between Auto, Normal, Zoom1, Zoom2 and Wide modes.
- 6 **MPX**
Press to display and select the audio signal.
- 7 **MENU**
Press to open or close the Menu.
- 8 **Back/CANCEL**
Press to back to previous Menu.
- 9 **Directional keys**
On certain models, the left and right directional keys also function as rewind and fast-forward keys when viewing multimedia files.
- 10 **OK/ENTER/CH LIST**
ENTER: Press to confirm channel number selection.
CH LIST: Press to launch the channel list. See page 33.
- 11 **MUTE**
Press to toggle audio on and off.
- 12 **FAV**
Press to display the favorite channel list.
- 13 **VOL (+/-)**
Press to increase or decrease the volume.
- 14 **CH (up/down)**
Press to sequentially select the TV channel.
- 15 **Number keys.**
- 16 **TELETEXT/MIX**
Press to switch from TV/AV to Teletext mode.
Press again to overlay teletext page on the TV image.
- 17 **SUBTITLE**
Press to view subtitles on the screen.

Teletext and Multimedia



Teletext

- 1 Colour buttons (R/G/Y/B)**
Operates corresponding button on the teletext page.
- 2 INDEX**
Press to go to the index page.
- 3 SIZE**
Press once to zoom teletext page to 2X.
Press again to resume.
- 4 HOLD**
Press to pause the current teletext page.
- 5 REVEAL**
Press to reveal hidden teletext information.

Multimedia

- 1 Colour buttons (R/G/Y/B)**
No function when using the multimedia interface.
- 2 Previous Track**
Press to go to the beginning of a track, or the previous track.
- 3 Stop**
Press to stop playback.
On certain televisions the remote control can start recording programmes. This feature is not available on your television.
- 4 Play/Pause**
Press to start playing the selected track, or pause a track if it is already playing.
- 5 Next track**
Press to skip to the next track if multiple tracks have been selected.
- 6** You may use the left and right directional buttons to advance or rewind in a track. Press the button again to increase how fast the track advances (x2/x4/x8/x16). Press the Play/Pause button to resume playback.

The left and right directional keys also function as rewind and fast-forward keys when viewing multimedia files.

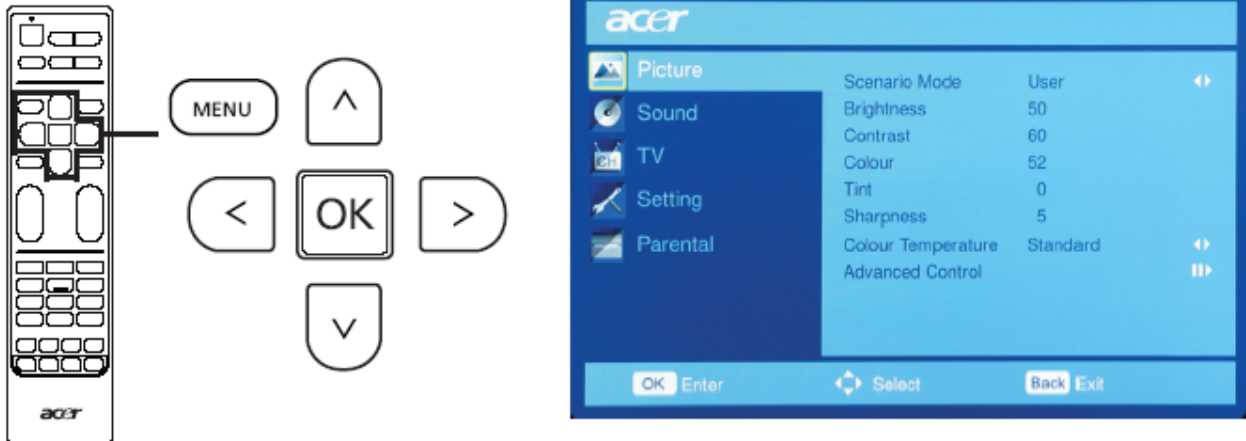
Using the OSD Menus

OSD navigation

Many of the advanced settings and adjustments are available through using the OSD (onscreen display) menus, as shown in the example screenshot below.

Basic operations required to navigate these menus (Picture, Audio, Channel management, Settings and Advanced) are described in this section.

Navigating the OSD with the remote control



You can also interact with these menus using the right panel controls. Please see "Front panel view" on page 5 for details.

<p>There are five main OSD menus. These are: Picture, Audio, Channel management, Settings and Advanced. Use the following method to navigate these menus.</p>		
1		<p>Press the MENU button on the remote control or the MENU button on the control panel.</p>
2		<p>Select your desired menu by using the up and down directional keys to switch between the five menus.</p> <p>Press OK or the right directional key to enter a menu.</p> <p>Press BACK or the left directional key to return to the menus.</p>
3		<p>Use the directional keys to interact with the menu. The up / down directions will scroll through the menu options, while left/right will adjust the different settings (for example, in the Picture menu, settings such as brightness, contrast, etc.). Press MENU to exit.</p>

Adjusting the OSD settings

The OSD can be used for adjusting the settings of your LCD TV.

Press the **MENU** key to open the OSD. You can use the OSD to adjust the picture quality, audio settings, channel settings and general settings. For advanced settings, please refer to following page:

Adjusting picture quality



- 1 Press the **MENU** key to bring up the OSD.
- 2 Using the directional keys, select **Picture** from the OSD. Then navigate to the picture element you wish to adjust.
- 3 Use the left or right keys to adjust the sliding scales or select one of the preset scenario modes. Press **MENU** to save and exit.
- 4 The **Picture** menu can be used to adjust the current **Scenario Mode, Brightness, Contrast, Colour, Tint, Sharpness** and other image-related qualities.

Adjusting sound settings



- 1 Press the **MENU** key to bring up the OSD.
- 2 Using the directional keys, select **Sound** from the onscreen display. Then navigate to the feature you wish to adjust.
- 3 Use the left or right keys to adjust the sliding scales or select one of the preset scenario modes. Press **MENU** to save and exit.
- 4 The **Sound** menu can also be used to adjust the the current **Sound Mode, Equaliter, Steady Sound, Sound Effects** and other important sound-related settings.

Adjusting TV settings



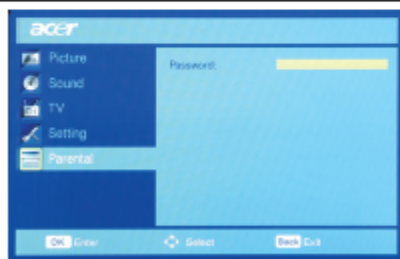
- 1 Press the **MENU** key to bring up the OSD.
- 2 Using the directional keys, select **TV** from the OSD.
- 3 Use the directional keys to navigate the menus.
- 4 The **TV** menu can be used to adjust **Tuner mode, Country, Channels, Channel Edit** and other important channel-related settings.

Adjusting settings



- 1 Press the **MENU** key to bring up the OSD.
- 2 Using the directional keys, select **Settings** from the OSD. Then navigate to the feature you wish to adjust.
- 3 The **Settings** menu can be used to adjust the screen **Menu Language, Time, Subtitle, Teletext** and other important settings.

Adjusting Parental settings



- 1 Press the **MENU** key to bring up the OSD.
- 2 Using the directional keys, select **Parental** from the OSD. Then navigate to the feature you wish to adjust.
- 3 The **Parental** menu can be used to adjust the **Channel block, Parental guidance, Input block, Change password** and other important settings.



The options available on the OSD may vary depending on the TV signal source and model. Some digital options may not be available with an analog signal and vice versa.

OSD menus

Picture settings

Open the Picture menu as described in the **OSD navigation** section. This menu provides the following settings:

Scenario mode

Scenario mode provides preset viewing modes designed to give you the best picture quality when watching a particular kind of programme. These provide preset values for brightness, contrast, hue colour and sharpness. There are pre-defined audio and video settings for optimal enjoyment of the following scenarios: Standard, Movie, Game, Sport, Concert, User.

Mode	Information
Standard	Standard mode allows you to watch your favourite channels with sharp, brilliant imagery via adaptive brightness and contrast adjustments.
Movie	For comfortably enjoying movies at home, Movie mode displays dim scenes in clear detail; compensates for colour; and smoothly presents motion images. This is accomplished through optimal Gamma correction plus saturation, brightness and contrast adjustments.
Sport	Sport mode is suited for outdoor sports programmes, with accurate background depth and clear gradation between the bright, outdoor playing field and darker auditoriums. Sports mode also brilliantly enhances colours and presents swiftly moving pictures without residual images. All of this is achieved via specific Gamma corrections and saturation adjustments.
Concert	Concert mode places you in a virtual concert hall, opera house or other dim environment by means of adaptive brightness and contrast adjustments.
Game	Game mode carefully details the exquisite graphics of modern video games, providing lifelike entertainment while protecting your eyesight by adjusting brightness and contrast.
User	User mode allows you to save your favourite video settings.

Brightness

Change the brightness of the image.

Contrast

Change the contrast of the image.

Colour

Change the colour depth of the image.

Tint

Change the tint of the image.

Sharpness

Change the sharpness of the image.

Colour temperature

This setting adjusts the colour temperature of the image. You can set it to Standard, Cold, User or Warm depending on your preference. With the User setting, you may change the colour values individually.

Advanced

Noise reduction

Reduce any noise on the video signal

Flesh tone

Enhanced flesh tones in the video

Backlight

Change the brightness of the TV backlight

ACM

Activates Automatic Contrast Management to adjust the backlight brightness depending on the video

Sound settings

Open the Audio menu as described in the **OSD navigation** section. This menu provides the following settings:

Sound mode

Scenario mode provides preset audio modes designed to give you the best sound quality when listening to a particular kind of programme. These provide preset values for treble and bass. There are pre-defined audio and video settings for optimal enjoyment of the following scenarios: Music, Speech, User. For example, Music mode accentuates symphonic harmonies and the tenor audio range.

Equalizer 120 Hz / 500 Hz / 1.5 KHz / 5 KHz / 10 KHz

Adjust the volume for certain frequency bands

Balance

Change the balance between the left and right speakers.

Sound effect

Turn Sound Effects on to add virtual surround sound. If Sound Effects are on, Treble and Bass settings are not available.

Digital Audio Out

This allows you to set the type of Digital audio signal that is used.

Steady sound

This function prevents sudden changes in the audio output level. If this function is On, volume levels will be consistent when switching between input sources and changing channels.

Audio type

Access audio options for the hard of hearing or visually impaired.

Audio description

Adjust the volume for the spoken menu description for the visually impaired.

TV settings

Open the TV menu as described in the OSD navigation section. This menu provides the following settings:

Tuner mode

Adjust the signal settings to receive Antenna or Cable signals.

Country

Select the country you live in to scan for the correct signals.

Channels

Channel scan

Channel scan allows you to scan for channels. If you completed the setup wizard the first time you turned on your TV, all available channels are listed.

Wait until the scan has finished; this will take several minutes.

Update scan

Update scan allows you to scan for new or deleted channels.

Wait until the scan has finished; this will take several minutes.

Single RF scan

You can manually add a digital channel by searching in specific UHF channels.

Analogue manual scan

You can manually add an analog channel by adjusting the settings here.

Channel edit

You can edit the detected channels, to change how they are displayed in the channel list. Use the up or down directional keys to select a channel, direction, OK and number keys to change the channel number or name.

Intelligent zapping

If Intelligent Zapping is on, then channels viewed for less than the period defined here will not be added to the zapping memory.

Settings

Open the Settings menu as described in the OSD navigation section. This menu provides the following settings:

Menu language

Set the language displayed for the OSD menus.

Wide mode

Press to toggle scaling mode between Normal, Wide and different zoom modes (1, 2). Auto is also available when viewing digital TV and HDMI signals.

Time

Use these settings to adjust the time and set the sleep delay.

Time zone

Set your time zone.

Time

Set the time and date.

Sleep

You can set a time delay, after which the TV will turn off. The delay can be 15, 30, 45, 60, 90 or 120 minutes.

Subtitle

Use these settings to adjust subtitles.

Analogue subtitles

Set if subtitles are displayed when available.

1st / 2nd subtitle

Set the 1st and 2nd priority for subtitle languages, if more than one subtitle is available.

Subtitle type

You can choose between normal subtitles and subtitles for the hearing impaired, when these are available.

Teletext language

Use these settings to adjust digital teletext settings.

Digital Teletext language

Set the language used for digital teletext pages.

Decode page language

Set the type of text used for teletext pages.

Common interface

Displays information about any card installed in the common interface slot.

Reset default

Return all settings to default values, removing any changes.

Automatic power off

If Automatic Power Off is active, if the TV on for four hours without any channel changes or other activity, it will turn off. A warning message is displayed before the TV turns off.

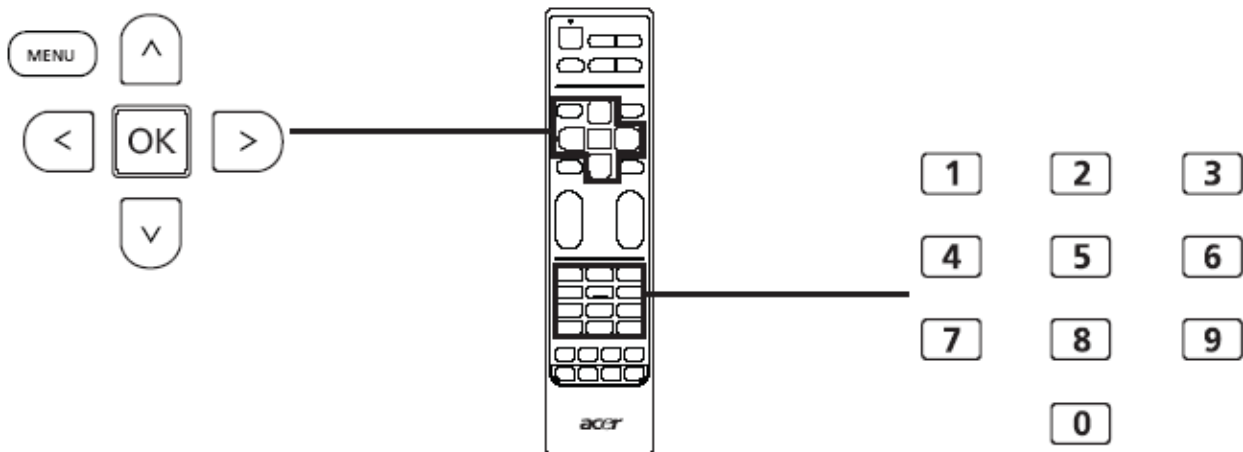
On screen help

Show onscreen help messages.

Parental

Open the Parental menu as described in the OSD navigation section. Enter your Password (see below), then select one of the three options.

Parental control allows you to enter a password and effectively stop anyone without the password from watching TV. Three options are available: Channel Block, Age Rating and Change Password.



This menu provides the following settings:

Channel block

Press OK to see the list of channels. Use the up and down directional keys to select the channel to block and then press OK. A padlock symbol is displayed next to blocked channels. Press the OK again to unblock a channel.

When viewing channels, if a blocked channel is selected the TV will ask for your password. Enter your password to view the channel.

Parental Guidance

Most digital TV allows you to block content according to rating systems. The rating system used is dependent on region, and is only available on digital channels. Analog channels will not be blocked with this option.

Age rating (for digital TV)

The settings cover from 4 to 18 years of age. When you lock a category, the categories for that age and younger will be blocked.

Input block

Press OK to see the list of input sources (SCART, HDMI, etc.). Use the up and down directional keys to select the input source to block and then press OK. A padlock symbol is displayed next to blocked input sources. Press the OK again to unblock an input source.

Set password

You can change the default password to a 4-digit code of your choice. If you are using the parental controls, then we recommend you change the password periodically.

Clear all

Return all parental settings to default values, removing any changes.



The default password for this TV is "0000." If you forget your password, please enter 6163 to reset.

How to Optimize the DOS-Mode

Plug and Play

Plug & Play DDC2B Feature

This monitor is equipped with VESA DDC2B capabilities according to the VESA DDC STANDARD. It allows the monitor to inform the host system of its identity and, depending on the level of DDC used, communicate additional information about its display capabilities.

The DDC2B is a bi-directional data channel based on the I²C protocol. The host can request EDID information over the DDC2B channel.

This monitor will appear to be non-functional if there is no video input signal. In order for this monitor to operate properly, there must be a video input signal.

This monitor meets the Green monitor standards as set by the Video Electronics Standards Association (VESA) and/or the United States Environmental Protection Agency (EPA) and The Swedish Confederation Employees (NUTEK). This feature is designed to conserve electrical energy by reducing power consumption when there is no video-input signal present. When there is no video input signals this monitor, following a time-out period, will automatically switch to an OFF mode. This reduces the monitor's internal power supply consumption. After the video input signal is restored, full power is restored and the display is automatically redrawn. The appearance is similar to a "Screen Saver" feature except the display is completely off. The display is restored by pressing a key on the keyboard, or clicking the mouse.

Using the Right Power Cord

The accessory power cord for the Northern American region is the wallet plug with NEMA 5-15 style and is UL listed and CSA labeled. The voltage rating for the power cord shall be 125 volts AC.

Supplied with units intended for connection to power outlet of personal computer: Please use a cord set consisting of a minimum No. 18 AWG, type SJT or SVT three conductors flexible cord. One end terminates with a grounding type attachment plug, rated 10A, 250V, CEE-22 male configuration. The other end terminates with a molded-on type connector body, rated 10A, 250V, having standard CEE-22 female configuration.

Please note that power supply cord needs to use VDE 0602, 0625, 0821 approval power cord in European countries.

This chapter contains step-by-step procedures on how to disassemble the monitor for maintenance.

The tools listed as below are that we may use during this procedure:

1. A proper screwdriver
2. A pair of glove
3. A pliers
4. A putty knife

For AT2358MWL, machine color is white; BASE ASS'Y is different from AT2058ML&AT2358ML.
Take AT2058ML&AT2358ML for example.

Disassembly Procedure

1. Put the monitor on a clean soft cloth.



2. Unscrew the 4 screws to pull out the stand.



3. Remove the rear cover.

(1) Unscrew the screws on the rear cover.



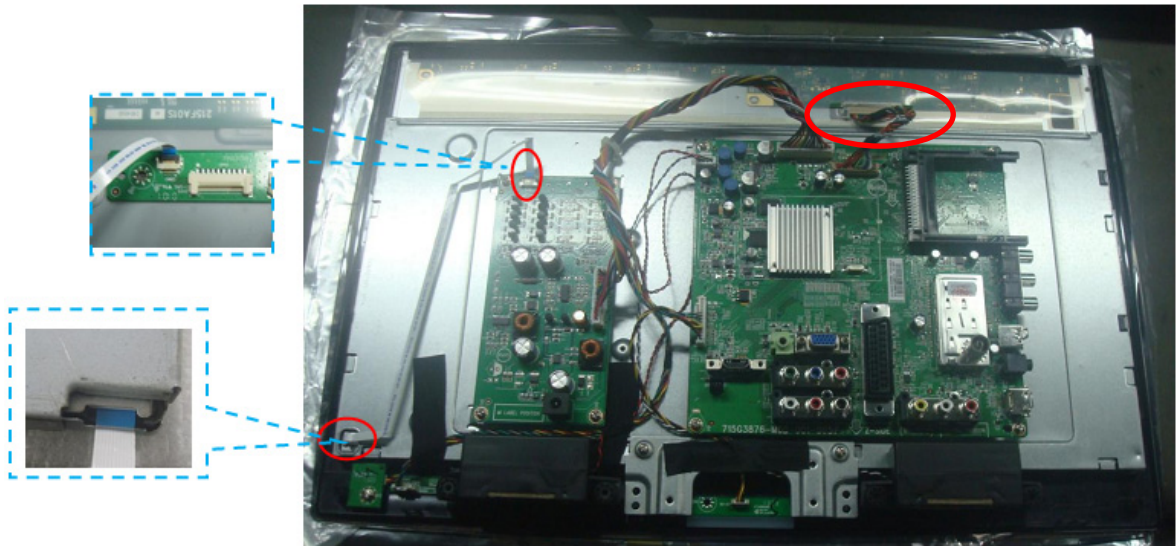
(2) Pry the monitor up then find out the hooks' position, use the tool to open all latches.



(3) Remove the rear cover.

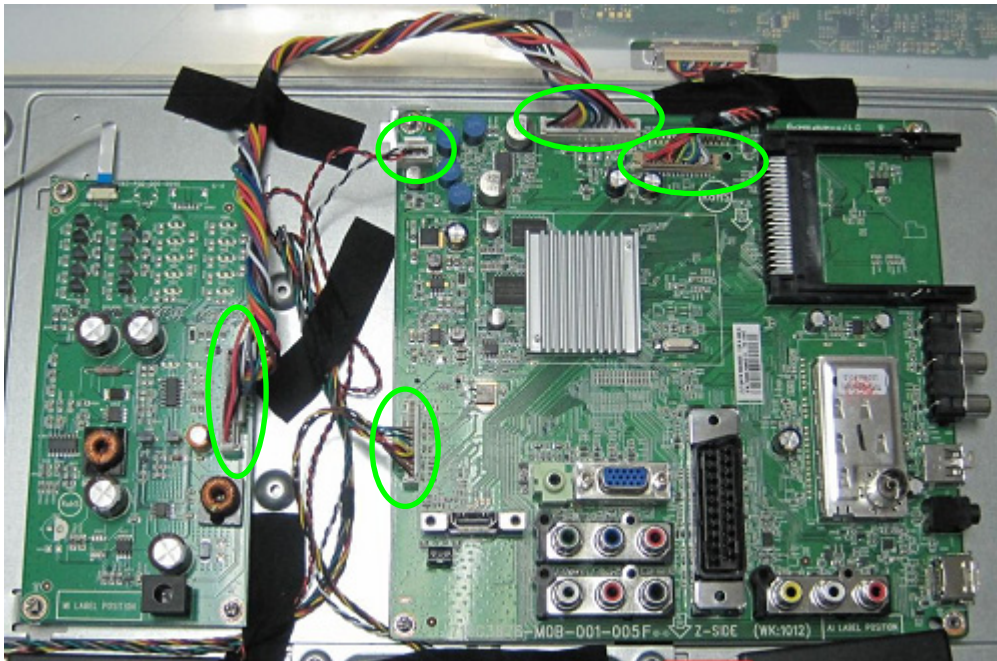


4. Disconnect the LVDS cable and FFC cable.

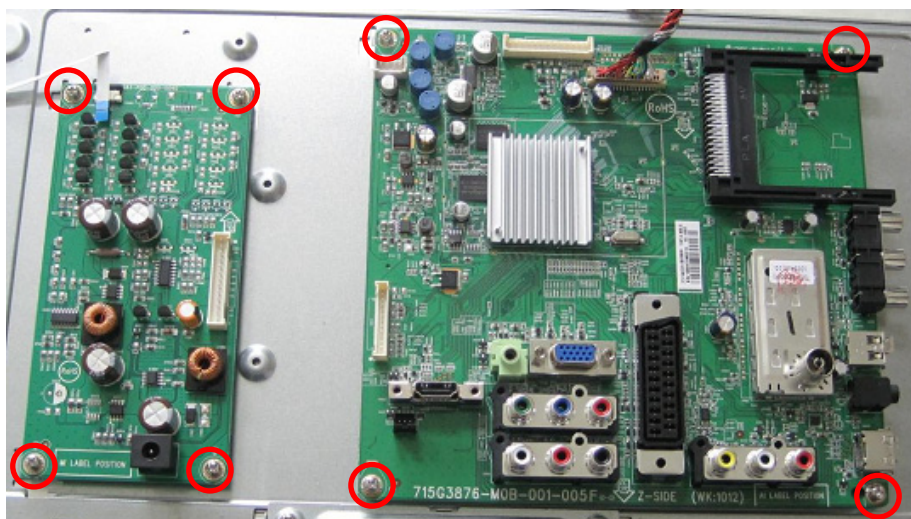


5. Remove the main board and power board.

(1) Disconnect the cables marked in green.



(2) Unscrew the screws marked in red.



6. Unscrew the screws.



7. Remove the speakers.



8. Remove the bezel.



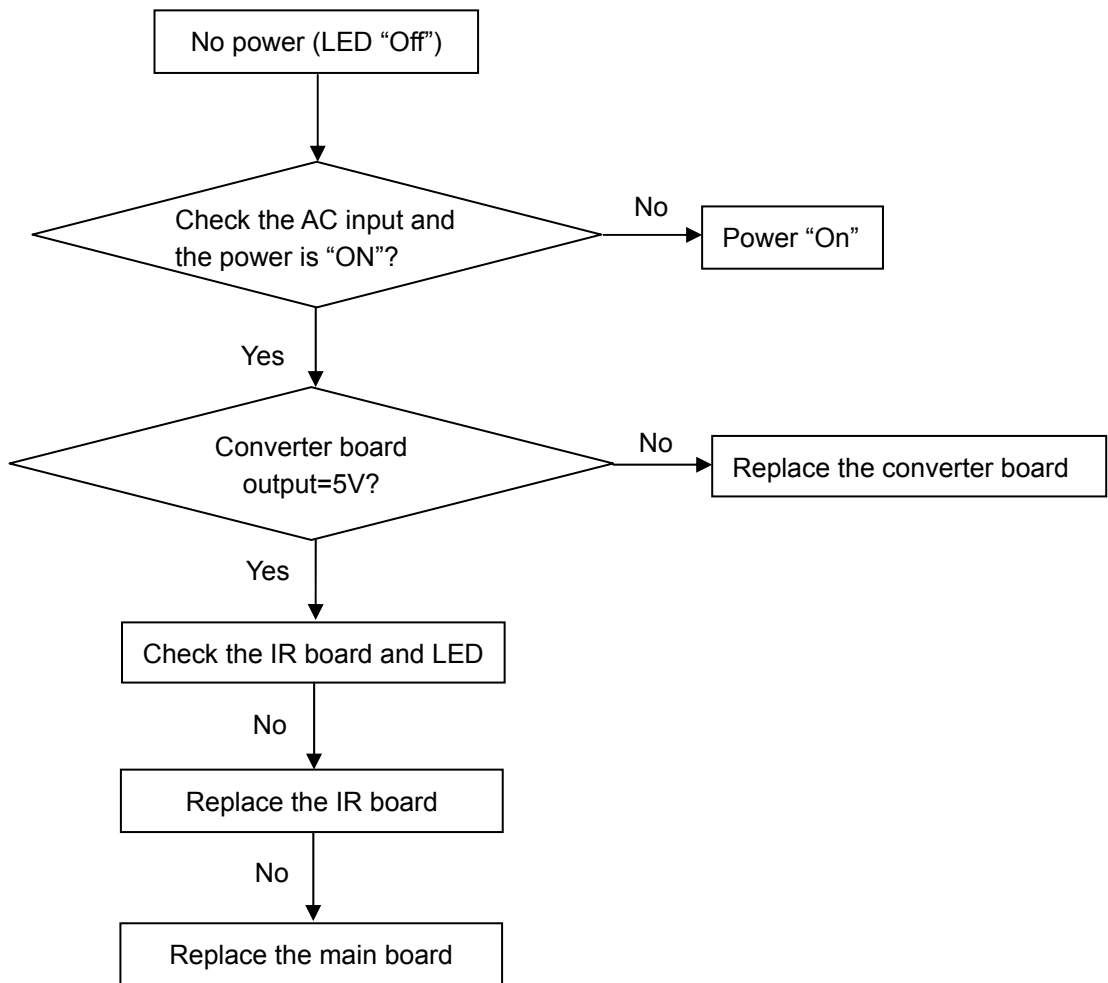
9. Remove the main frame.



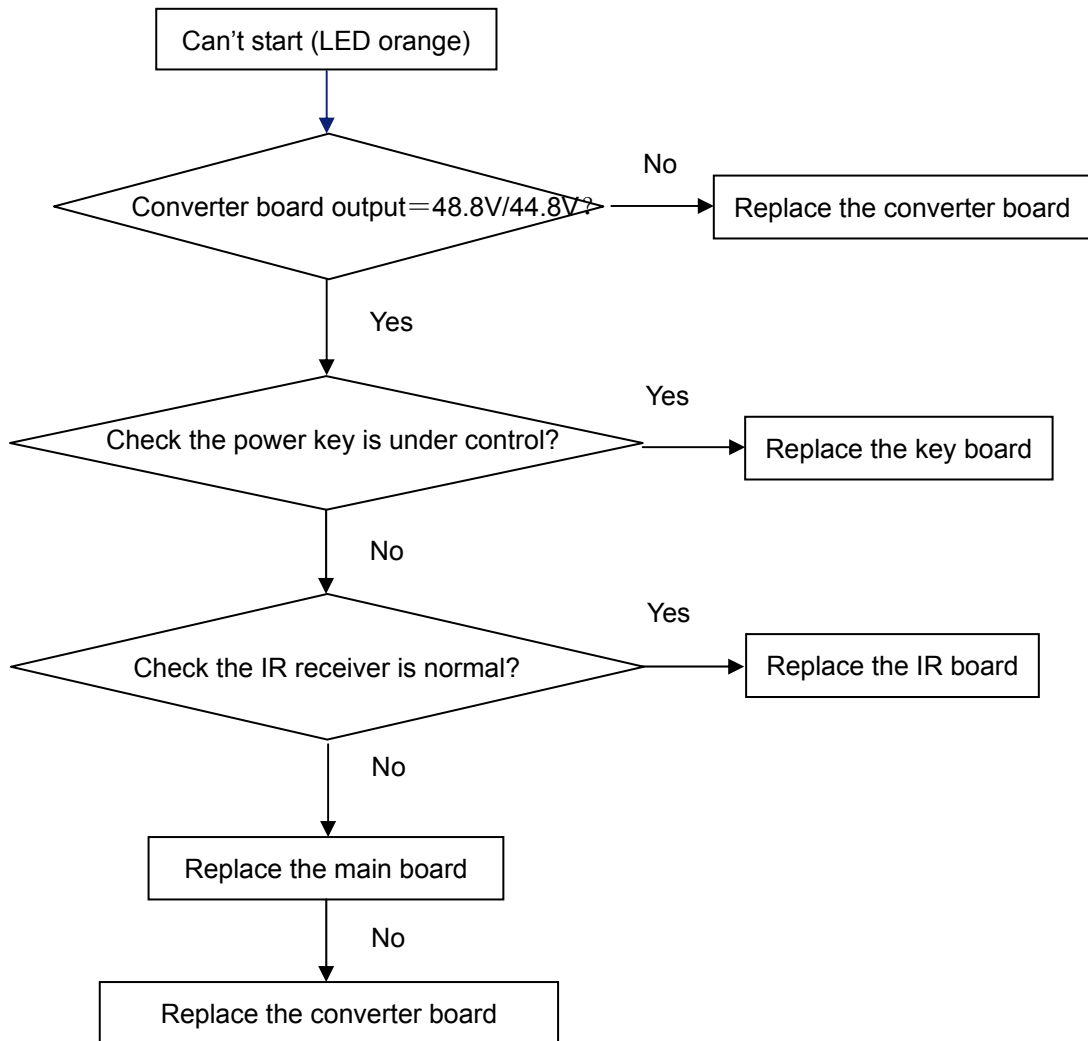
10. The panel.



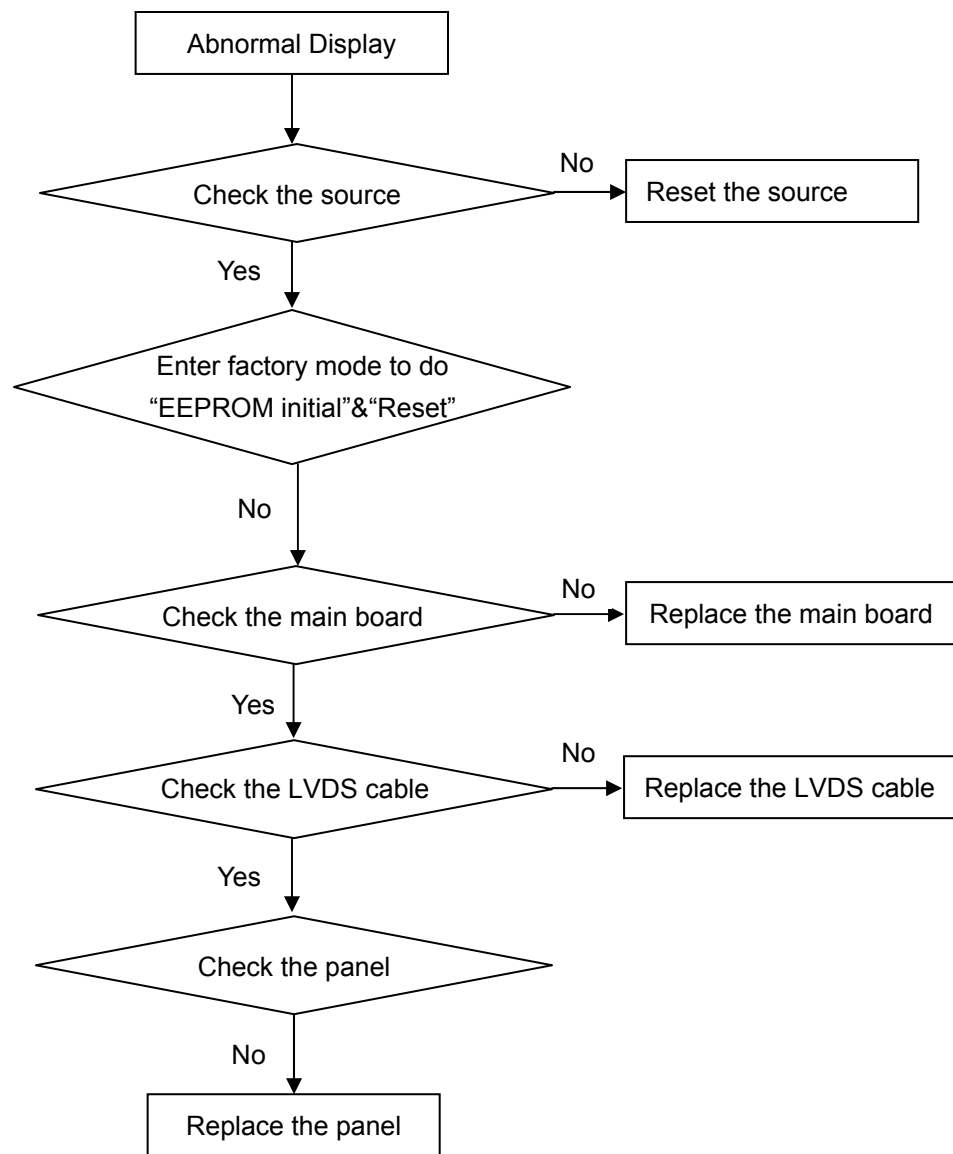
1. No power



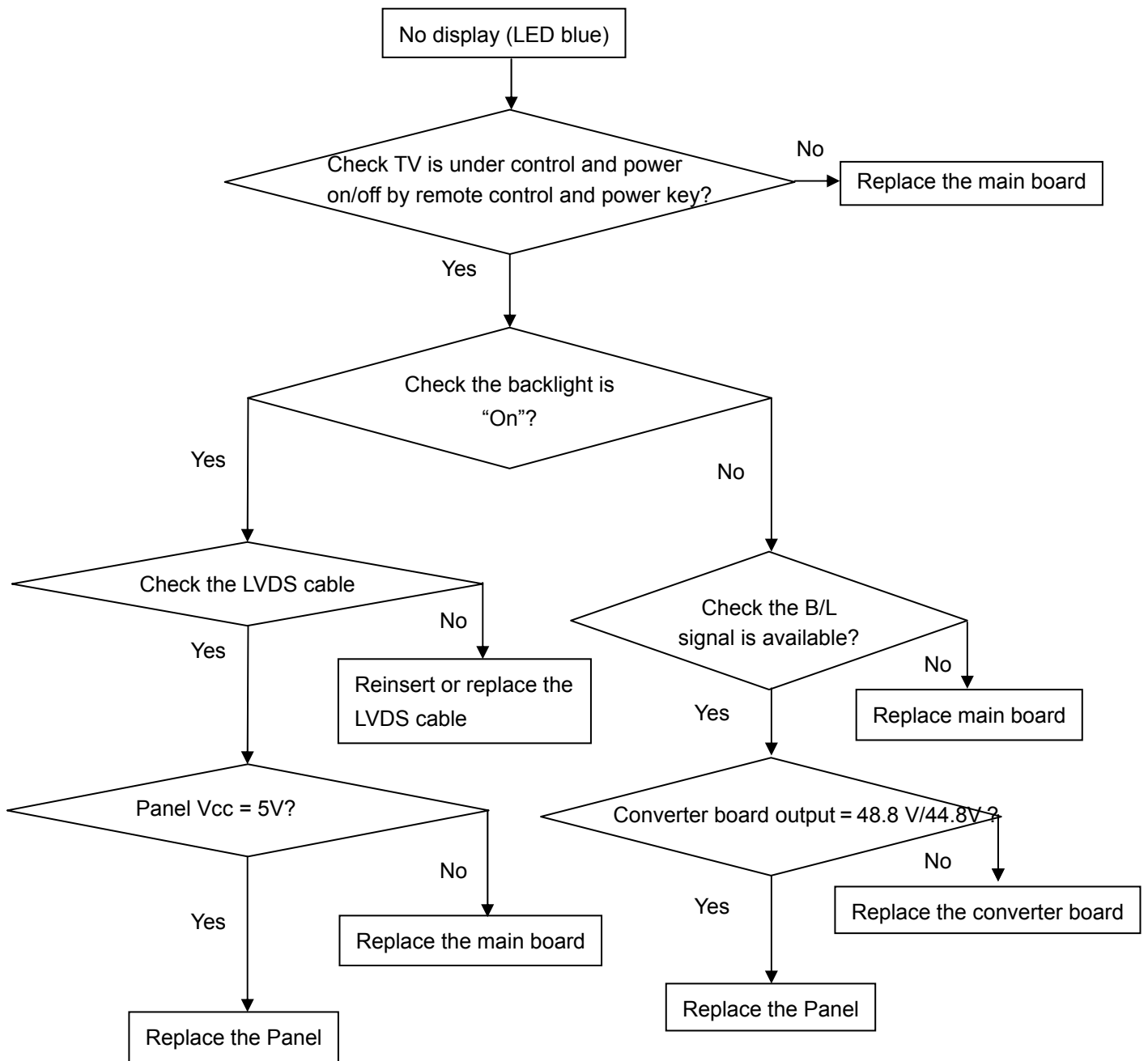
2. Can't start



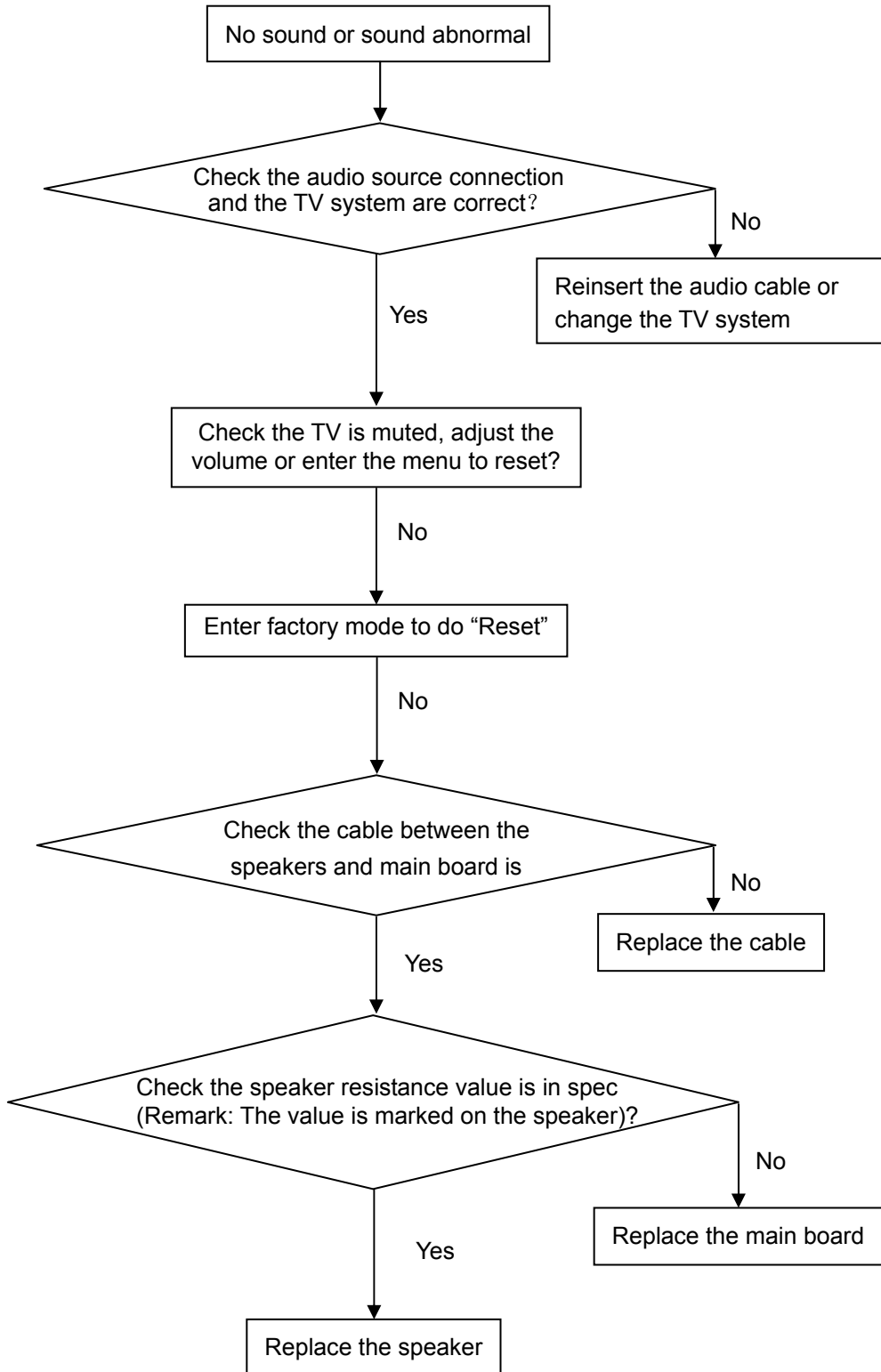
3. Abnormal Display



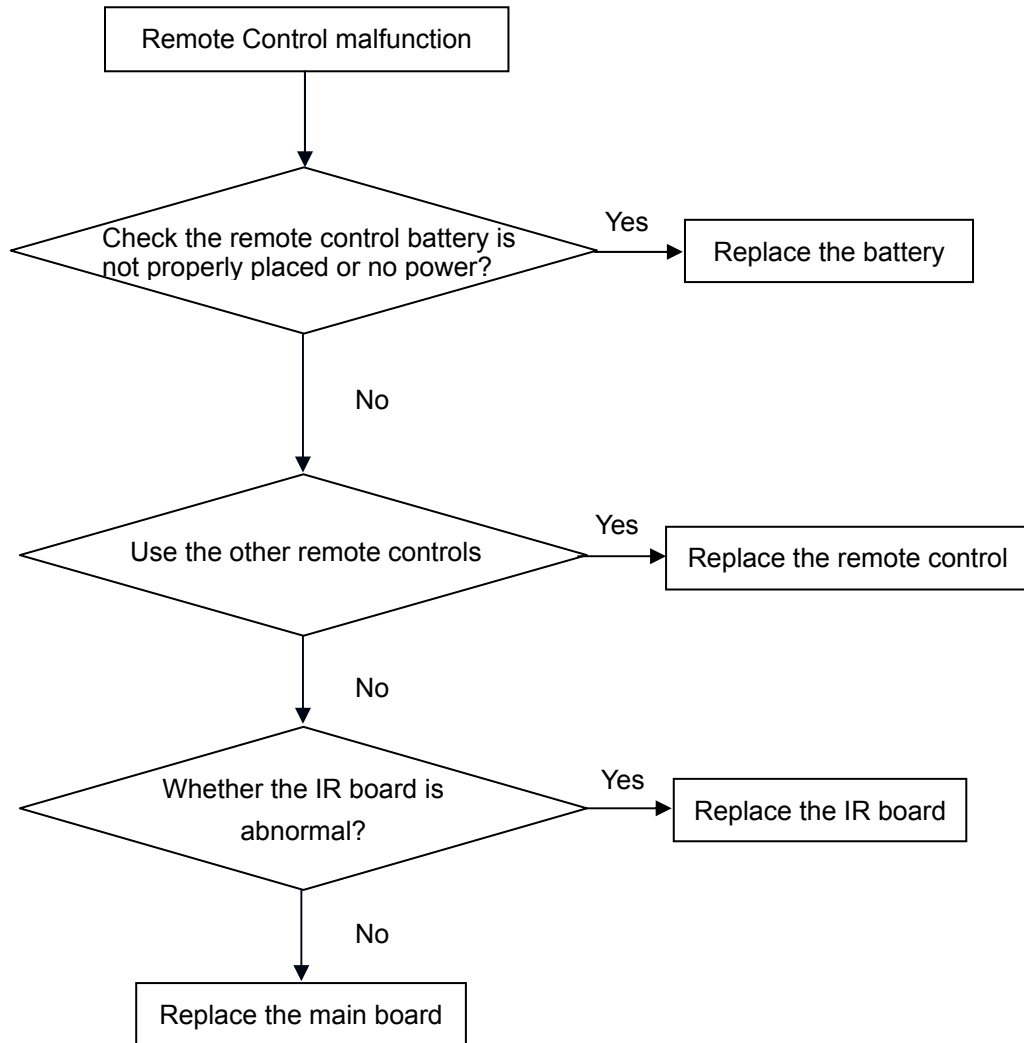
4. No display



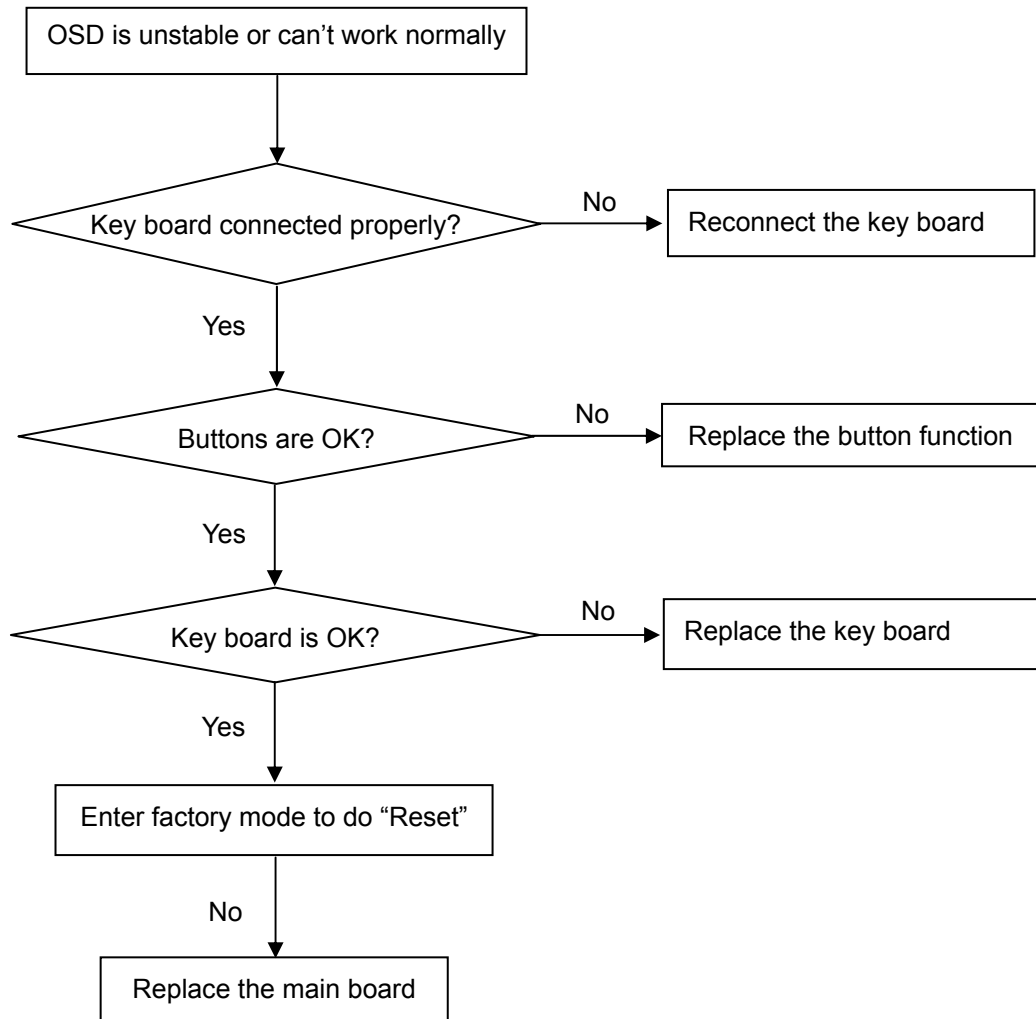
5. Sound problem



6. Remote Control malfunction

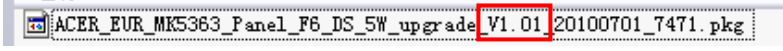


7. OSD is unstable or can't work normally



Step 1: Ready for F/W Upgrade

1.1 Change the software file name to " upgrade.pkg" ,e.g.:

Before change: 

After change: 

- 1.2 Prepare a USB memory (The file system of USB memory must be FAT16 or FAT 32).
- 1.3 Copy the file (upgrade.pkg) from your computer to the USB memory, and remove the USB disk from computer's USB port!

Note: 1). Note the version of this F/W is **V1.01** before you change the software file name.
2). The software file name must be changed, or TV can't detect the F/W.

Step 2: F/W Upgrade

- 2.1 When TV is DC off, unplug the AC power.
- 2.2 Plug the USB disk to the USB port on the side I/O port of TV.(Figure 2.1)



Figure 2.1

- 2.4 Plug the AC power to AC ON TV, TV will upgrade automatically after it detects the USB disk , the TV display black screen and the LED light is glinting.
- 2.5 About 40 secs. TV LED will show red light, and TV is standby, unplug the USB disk.

Step 3: Check the F/W version and reset to default.

3.1 Turn on TV, press "MENU"+"1"+"9" +"9" +"9" key rapidly on the Remote control to enter the factory mode (Figure 3.1).

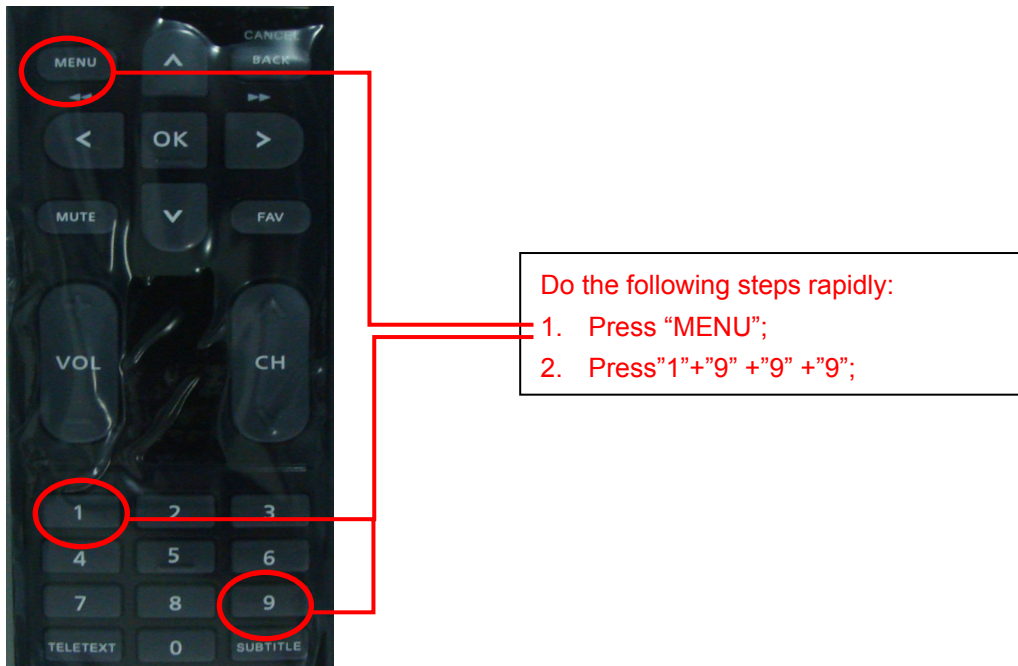


Figure 3.1

3.2 Check the F/W version on the second row of the factory mode info (e.g. the “Ver.” info is **V1.01**). If F/W version is incorrect, please check the version of F/W in your USB memory, else let’s go to Step 3.3.

FACTORY	
1. Brand	OTS 2K10 ..
2. Ver	V1.01
3. Loader Ver	V0.030A
4. Date	Jun 3 2010
5. Model name	ACER_F6...
6. Scaler	MT5363H
7. Tuner type	LG_TDTW...
8. Panel type	PANEL_A...
9. Current source	TV
10. Auto color	No
Exit	

Figure 3.2

3.3 Press ‘BACK’ Key on the Remote control to be off factory mode.

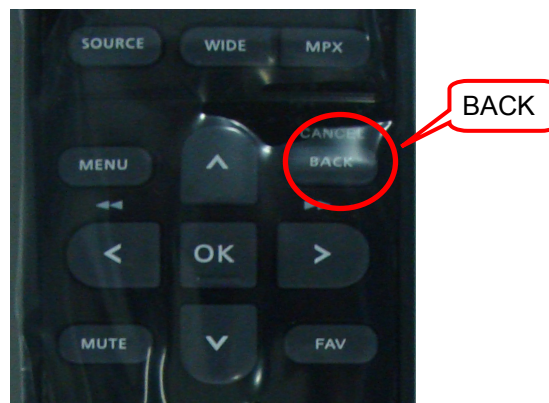


Figure 3.3

Introduction of adjust item:

They only need adjust WB (Ypbpr's Normal/Warm/Cool).

WB Adjust Method

1. Enter into the factory mode:

Turn on the TV, press RC key 'MENU'+ '1' + '9' + '9' + '9'.

2. Take an example of adjust Ypbpr_Normal:

a. Select item "Source": Ypbpr and item "Color Temp": Normal

b. Adjust gain of RGB to meet spec in the below setting of TIM\PAT.

(COMPONENT mode: TIM = 314(720P); PAT = 141(80IRE))

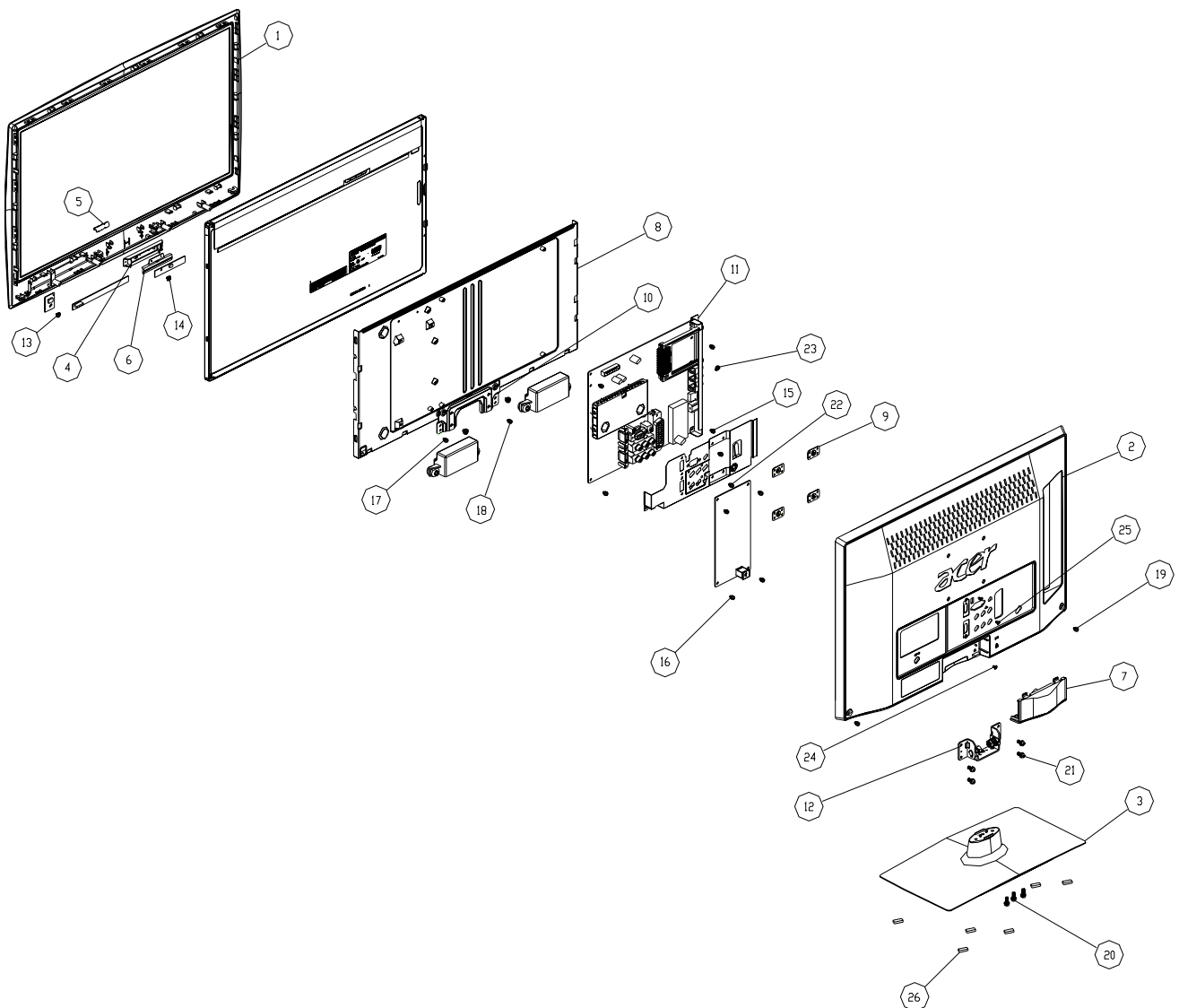
	Normal/ (7500°K)	Warm/ (6500°K)	Cool / (9300°K)
x (center)	0.300 ± 0.015	0.314 ± 0.015	0.285 ± 0.015
y (center)	0.310 ± 0.015	0.329 ± 0.015	0.293 ± 0.015
Lv(center)	$>200\text{cd/m}^2$	$>200\text{cd/m}^2$	$>200\text{cd/m}^2$

This chapter gives you the FRU (Field Replaceable Unit) listing in global configurations of AT2058ML&AT2358ML&AT2358MWL. Refer to this chapter whenever ordering for parts to repair or for RMA (Return Merchandise Authorization).

NOTE: Please note WHEN ORDERING FRU PARTS that you should check the most up-to-date information available on your regional web or channel (<http://aicsl.acer.com.tw/spl/>). For whatever reasons a part number change is made, it will not be noted in the printed Service Guide. For ACER AUTHORIZED SERVICE PROVIDERS, your Acer office may have a different part number code from those given in the FRU list of this printed Service Guide. You must use the local FRU list provided by your regional Acer office to order FRU parts for repair and service of customer machines.

NOTE: To scrap or to return the defective parts, you should follow the local government ordinance or regulations on how to dispose it properly, or follow the rules set by your regional Acer office on how to return it.

Exploded Diagram (Model: AT2058ML&AT2358ML&AT2358MWL)



Note: The parts information listed below are for reference only, and are subject to change without notice. Please go to <http://cs.tpv.com.cn/hello1.asp> for the latest information.

AT2058ML

Item	Description	TPV Part No.	Acer Part No.	Q`ty
1	BEZEL_TV200W-ACER2	A34T2102ALCA1C0130	60.MB10B.001	1
2	REAR_COVER_TV200W-ACER2	A34T2103ADT 1T0130	60.MB10B.002	1
3	BASE_TV200W-ACER2	A34T2104ALB 1X0133	60.MB10B.003	1
4	LENS_COVER	A33T1036ADT 1T0100	N/A	1
5	LOGO ACER	Q23T317878610A	N/A	1
6	LENS_POWER	A33T1038 1 1C0100	N/A	1
7	COVER_HINGE	A34T2108ADT 1T0100	42.MB10B.001	1
8	MAIN FRAME	A15T1359103	33.MB10B.002	1
9	BRACKET VESA	A15T1360101	N/A	4
10	BRACKET_HINGE	A15T1381101	N/A	1
11	SIDE BKT	A15T1380201	N/A	1
12	HINGE	A37T0202011	33.MB10B.001	1
13	SCREW(IR BOARD/BEZEL)	0Q1G1030 6120	N/A	1
14	SCREW(LED BOARD/ LENS_COVER)	0Q1G1030 6120	N/A	1
15	SCREW(MAIN BOARD/MAIN FRAME)	0M1G1730 6120	N/A	4
16	SCREW(POWER BOARD/MAIN FRAME)	0M1G1730 6120	N/A	4
17	SCREW(BRACKET_HINGE/MAIN FRAME)	0M1G1730 6 47 CR3	N/A	2
18	SCREW(BRACKET_HINGE/BEZEL)	0Q1G 940 8 47 CR3	N/A	2
19	SCREW(REAR COVER/BEZEL)	0Q1G 940 8 47 CR3	N/A	2
20	SCREW(BASE/HINGE A'SSY)	AM1G1740 12225 CR3	N/A	3
21	SCREW(HINGE A'SSY/REAR COVER/ BRACKET_HINGE)	AM1G1740 12225 CR3	N/A	4
22	SCREW(IO SHIELD/SCART)	0Q1G 330 8 47 CR3	N/A	1
23	SCREW(SIDE IO BKT/RCA IO)	0Q1G 330 8 47 CR3	N/A	1
24	SCREW(REAR COVER/HDMI IO)	0M1G 130 6 47 CR3	N/A	2
25	SCREW(REAR COVER/RCA IO)	0Q1G 130 8 47 CR3	N/A	1
26	FOOT PAD	Q12G6082 3	N/A	6

AT2358ML&AT2358MWL

Item	Description	TPV Part No.	Acer Part No.	Q'ty
1	BEZEL_TV23W	A34T2106ALCA1C0130(AT2358ML)	60.MB30B.001	1
		A34T2106AFAB1T0130(AT2358MWL)	60.MB40B.001	
2	REAR_COVER 23	A34T2107ADT 1T0130(AT2358ML)	60.MB30B.002	1
		A34T2107AFA 1T0130(AT2358MWL)	60.MB40B.002	
3	BASE_TV230W-ACER2	A34T2109ALB 1X0133(AT2358ML)	60.MB30B.003	1
	BASE	A34T2290AFA 1T0133(AT2358MWL)	60.MB40B.003	
4	LENS_COVER	A33T1036ADT 1T0100(AT2358ML)	N/A	1
		A33T1036AFA 1T0100(AT2358MWL)	N/A	
5	LOGO ACER	Q23T317878610A(AT2358ML)	N/A	1
		Q23T317878610B(AT2358MWL)	N/A	
6	LENS_POWER	A33T1038 1 1C0100(AT2358ML)	N/A	1
7	COVER_HINGE	A34T2108ADT 1T0100(AT2358ML)	42.MB10B.001	1
		A34T2108AFA 1T0100(AT2358MWL)	42.MB40B.001	
8	MAIN FRAME	A15T1358201	33.MB30B.001	1
9	BRACKET VESA	A15T1360101	N/A	4
10	BRACKET_HINGE	A15T1381101	N/A	1
11	BRACKET_IO	A15T1380101(AT2358ML)	N/A	1
	SIDE BKT	A15T1380201(AT2358MWL)	N/A	
12	HINGE	A37T0202011(AT2358ML)	33.MB10B.001	1
13	SCREW(IR BOARD/BEZEL)	0Q1G1030 6120	N/A	1
14	SCREW(LED BOARD/ LENS_COVER)	0Q1G1030 6120	N/A	1
15	SCREW(MAIN BOARD/MAIN FRAME)	0M1G1730 6120	N/A	4
16	SCREW(POWER BOARD/MAIN FRAME)	0M1G1730 6120	N/A	4
17	SCREW(BRACKET_HINGE/MAIN FRAME)	0M1G 930 4120	N/A	2
18	SCREW(BRACKET_HINGE/BEZEL)	0Q1G 940 8 47 CR3	N/A	2
19	SCREW(REAR COVER/BEZEL)	0Q1G 940 8 47 CR3	N/A	2
20	SCREW(BASE/HINGE A'SSY)	0M1G1740 10120	N/A	3
21	SCREW(HINGE A'SSY/REAR COVER/ BRACKET_HINGE)	0M1G1740 10120	N/A	4
22	SCREW(IO SHIELD/SCART)	0Q1G 330 8 47 CR3	N/A	1
23	SCREW(SIDE IO BKT/RCA IO)	0Q1G 330 8 47 CR3	N/A	1
24	SCREW(REAR COVER/HDMI IO)	0M1G 930 8 47 CR3	N/A	2
25	SCREW(REAR COVER/RCA IO)	0Q1G 930 8 47 CR3	N/A	1
26	FOOT PAD	Q12G6082 3(AT2358ML)	N/A	6
		Q12G6082 1(AT2358MWL)	N/A	

Part List

Below picture show the description of the component.

Description	Picture	TPV Part No.	Acer Part No.
Bezel		A34T2102ALCA1C0130(AT2058ML)	60.MB10B.001
		A34T2106ALCA1C0130(AT2358ML)	60.MB30B.001
		A34T2106AFAB1T0130(AT2358MWL)	60.MB40B.001
Panel		750TVG200W3A13N0AC(AT2058ML)	LK.20008.008
		750TVG230F5A13N0AC(AT2358ML)	LK.23008.010
		750TVG230F5A13N000(AT2358MWL)	LK.23008.010
Rear Cover		A34T2103ADT 1T0130(AT2058ML)	60.MB10B.002
		A34T2107ADT 1T0130(AT2358ML)	60.MB30B.002
		A34T2107AFA 1T0130(AT2358MWL)	60.MB40B.002
Base		A34T2104ALB 1X0133(AT2058ML)	60.MB10B.003
		A34T2109ALB 1X0133(AT2358ML)	60.MB30B.003
		A34T2290AFA 1T0133(AT2358MWL)	60.MB40B.003

Converter Board		LNTVAA482GAA2(AT2058ML)	55.MB10B.002
		LNTVAD443GAA5(AT2358ML& AT2358MWL)	55.MB30B.002
Main Board		756TQACB 2B038 00(AT2058ML)	55.MB10B.001
		756TQACB 2B040 00(AT2358ML)	55.MB30B.001
		756TQACB 2B083 00(AT2358MWL)	55.MB40B.001
LED Board		LEPFAQA6	55.MB10B.005
IR Board		IRPFAQE3	55.MB10B.003
Key Board		KEPFAQC9	55.MB10B.004
SPK		078G050A500 Y	23.MB10B.001
Main frame		A15T1359103(AT2058ML)	33.MB10B.002
		A15T1358201(AT2358ML& AT2358MWL)	33.MB30B.001

EDID Data

DDC DATA for D-Sub Input

AT2058ML

00 01 02 03 04 05 06 07 08 09 0A 0B 0C 0D 0E 0F

00| 00 FF FF FF FF FF FF 00 04 72 58 20 01 01 01 01
10| 00 14 01 03 68 40 24 78 2A C1 EC A1 53 46 97 24
20| 11 47 49 23 08 00 81 C0 8B C0 01 01 01 01 01 01
30| 01 01 01 01 01 01 2F 26 40 A0 60 84 1A 30 30 20
40| 35 00 80 68 21 00 00 1A 0E 1F 00 80 51 00 1E 30
50| 40 80 37 00 80 80 21 00 00 1C 00 00 00 FC 00 41
60| 54 32 30 35 38 4D 4C 0A 20 20 20 20 00 00 00 FD
70| 00 37 3E 1E 46 10 00 0A 20 20 20 20 20 20 00 CA

AT2358ML

00 01 02 03 04 05 06 07 08 09 0A 0B 0C 0D 0E 0F

00| 00 FF FF FF FF FF FF 00 04 72 58 23 01 01 01 01
10| 00 14 01 03 68 5D 34 78 2A C1 EC A1 53 46 97 24
20| 11 47 49 23 08 00 81 80 81 C0 D1 C0 01 01 01 01
30| 01 01 01 01 01 01 0E 1F 00 80 51 00 1E 30 40 80
40| 37 00 80 80 21 00 00 1C 66 21 50 B0 51 00 1B 30
50| 40 70 36 00 80 68 21 00 00 1E 00 00 00 FC 00 41
60| 54 32 33 35 38 4D 4C 0A 20 20 20 20 00 00 00 FD
70| 00 37 3E 1E 46 12 00 0A 20 20 20 20 20 20 00 2B

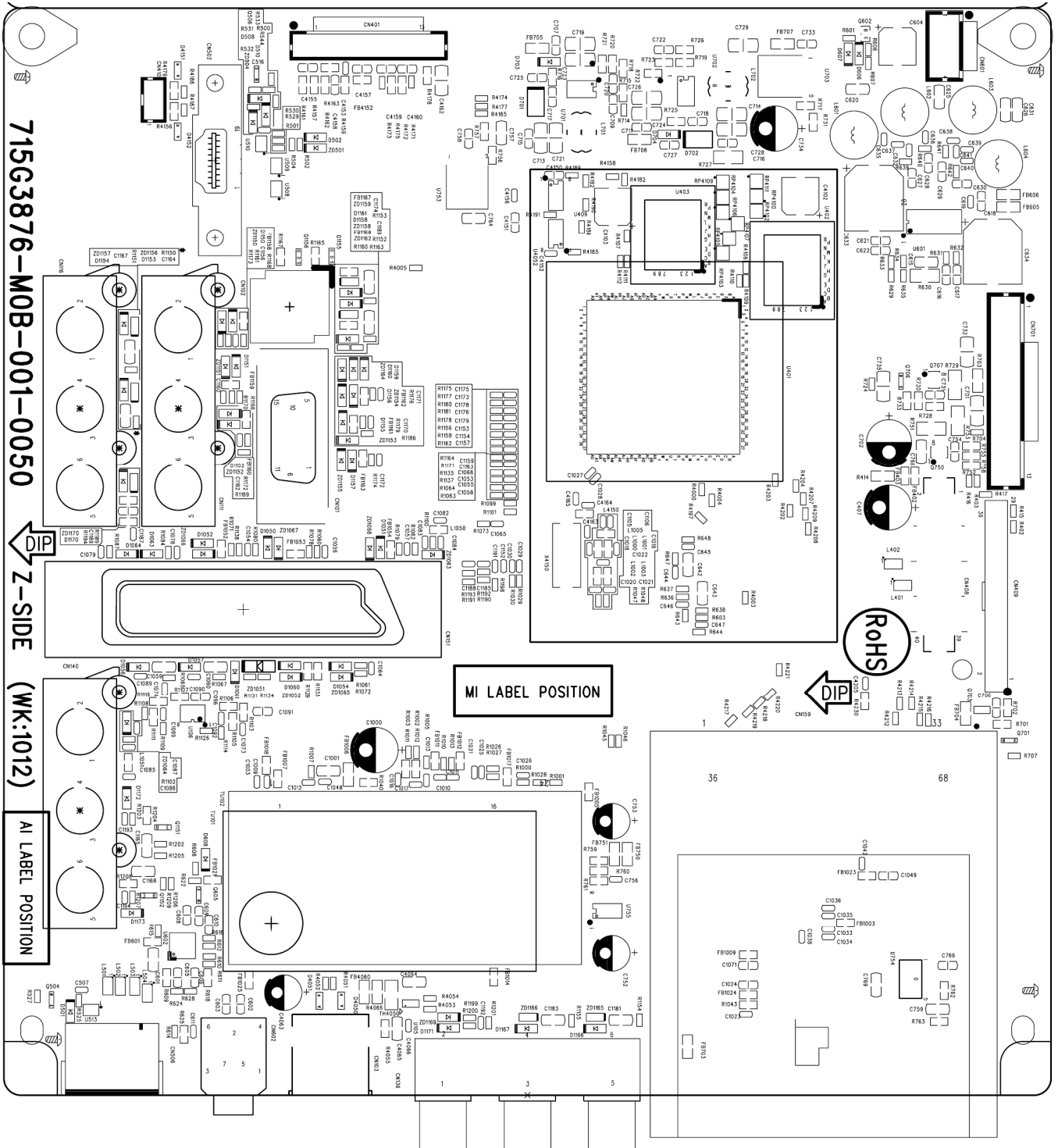
AT2358MWL

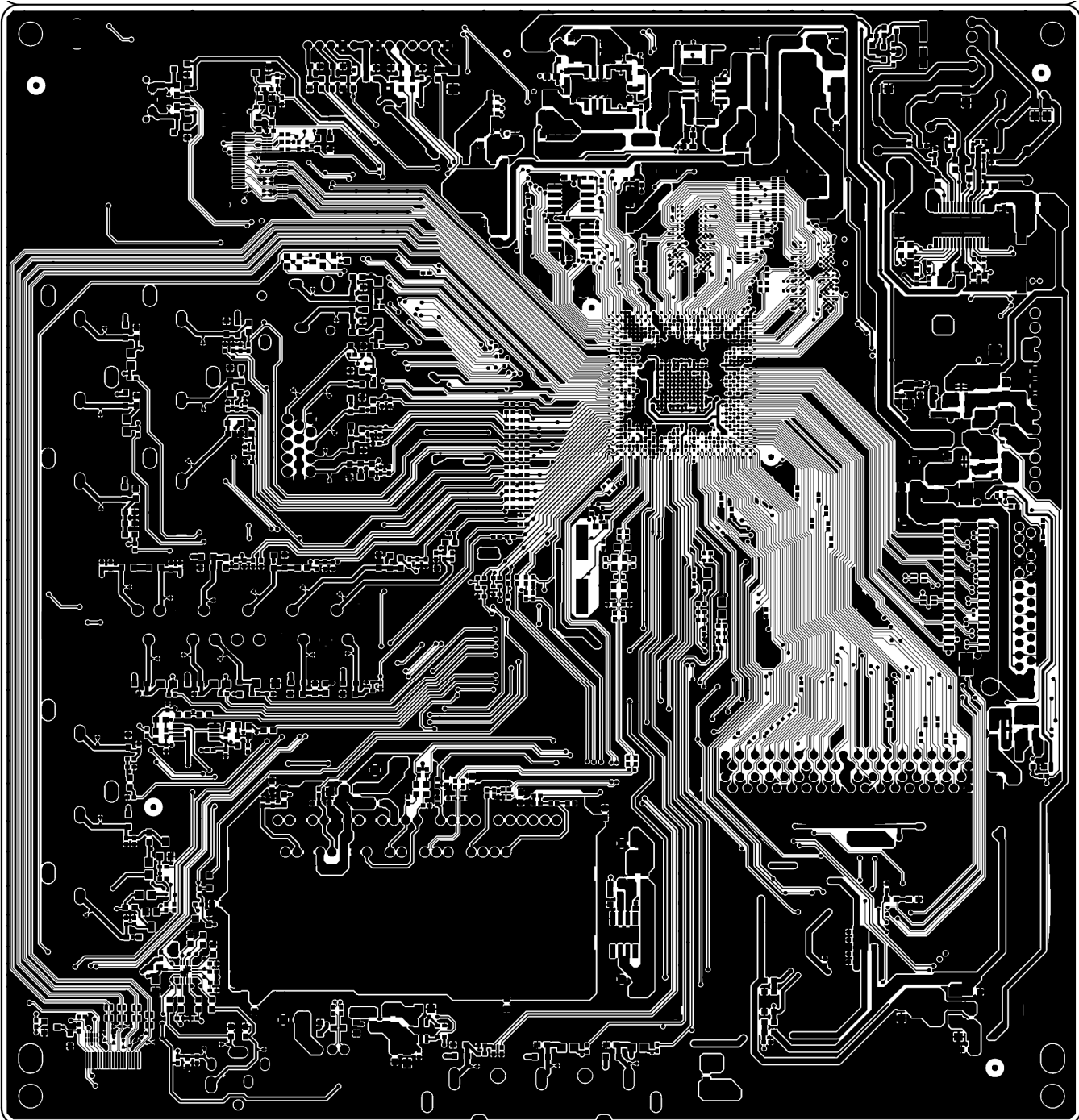
00 01 02 03 04 05 06 07 08 09 0A 0B 0C 0D 0E 0F

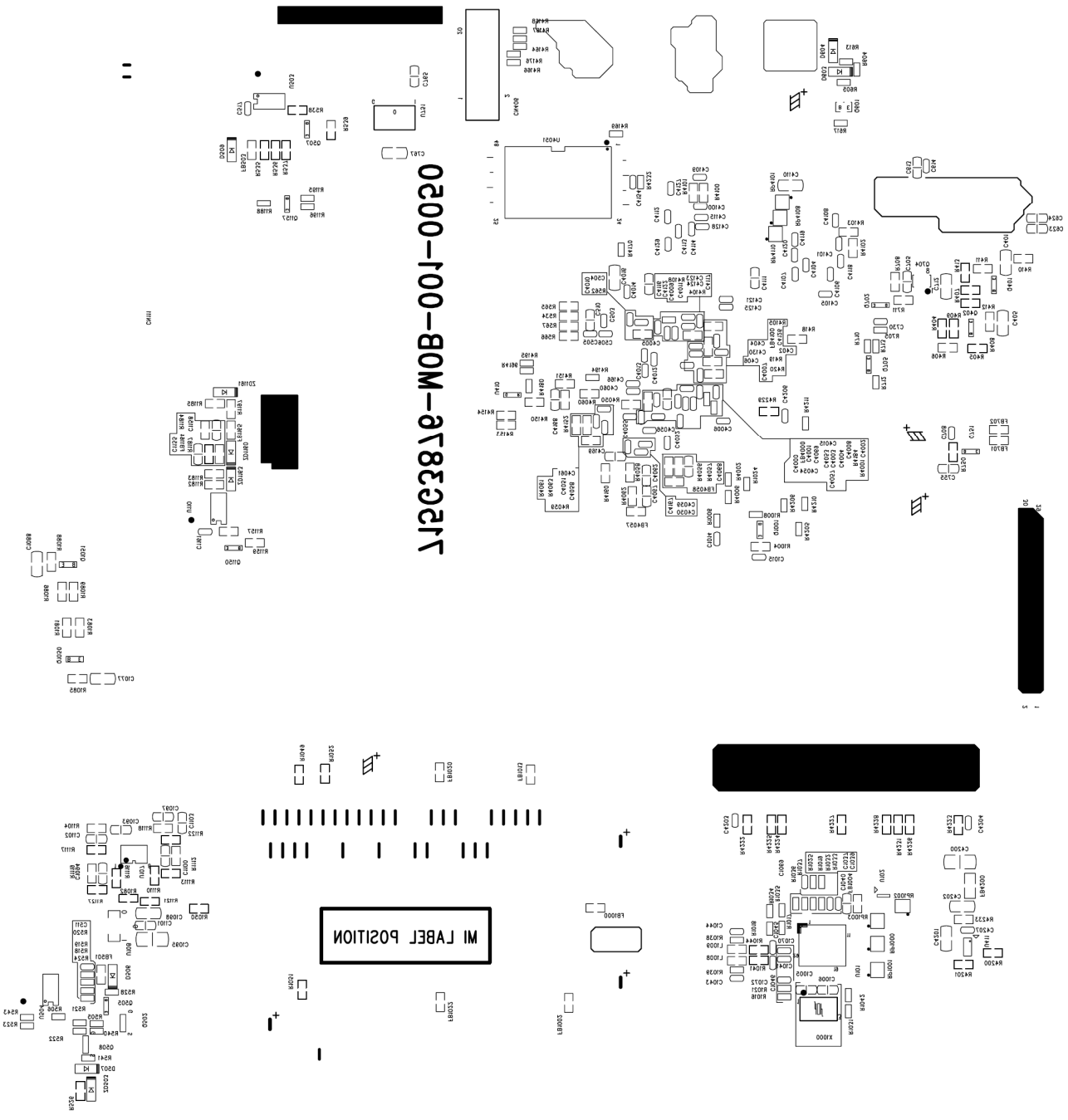
00| 00 FF FF FF FF FF FF 00 04 72 58 23 01 01 01 01
10| 00 14 01 03 68 5D 34 78 2A C1 EC A1 53 46 97 24
20| 11 47 49 23 08 00 81 80 81 C0 D1 C0 01 01 01 01
30| 01 01 01 01 01 01 0E 1F 00 80 51 00 1E 30 40 80
40| 37 00 80 80 21 00 00 1C 66 21 50 B0 51 00 1B 30
50| 40 70 36 00 80 68 21 00 00 1E 00 00 00 FC 00 41
60| 54 32 33 35 38 4D 57 4C 0A 20 20 20 00 00 00 FD
70| 00 37 3E 1E 46 12 00 0A 20 20 20 20 20 20 00 F4

Main Board

715G3876M0B001005K





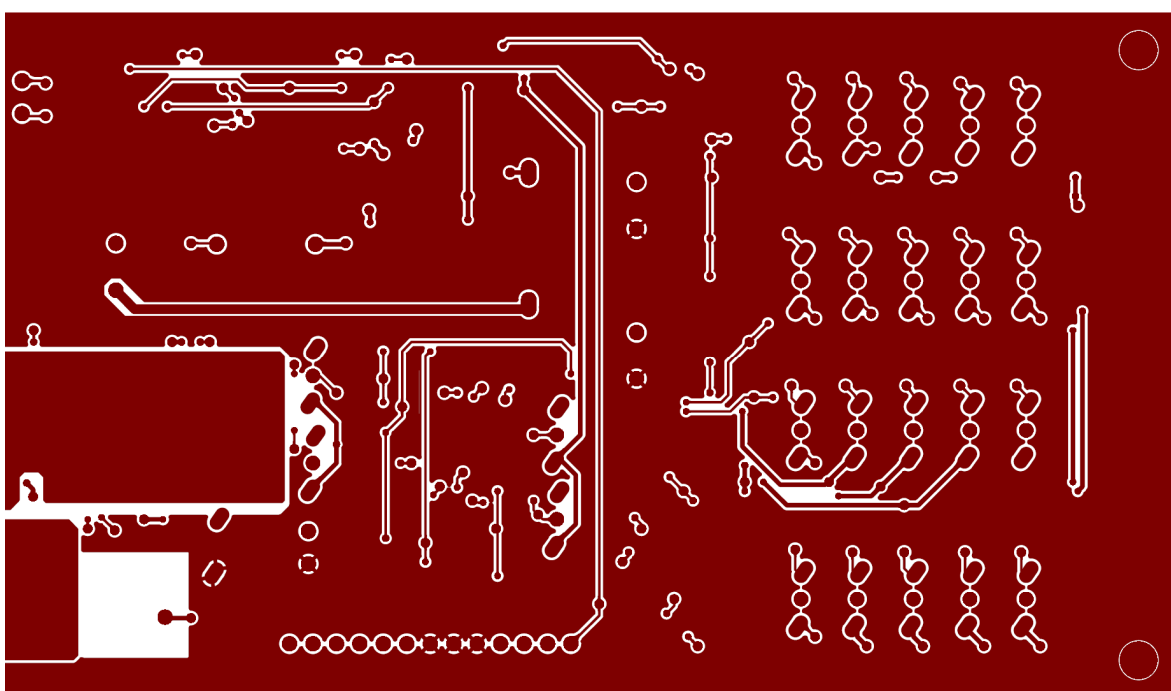
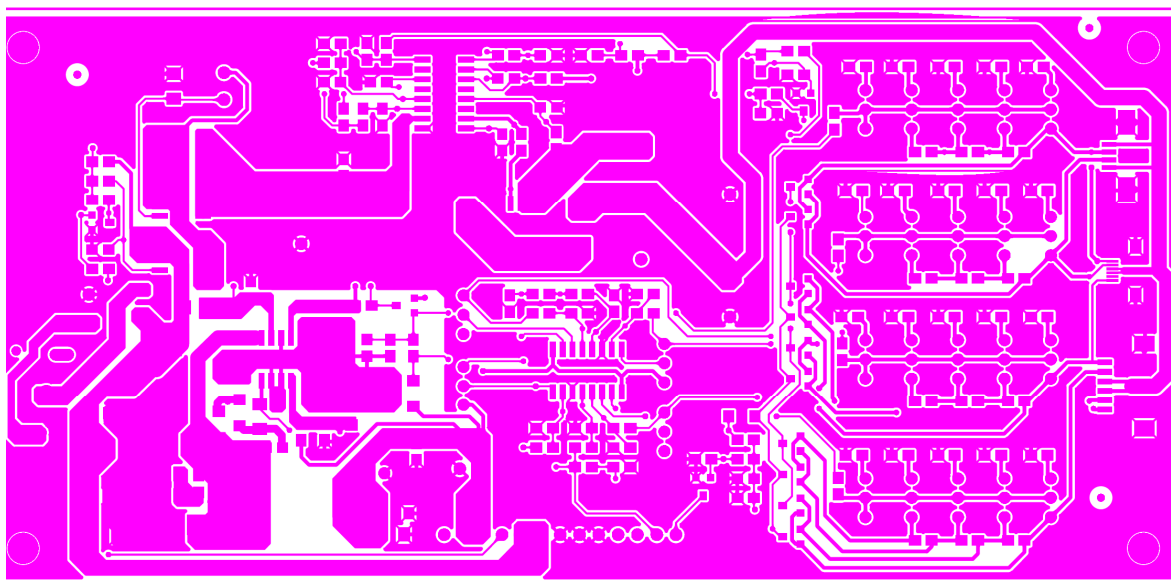
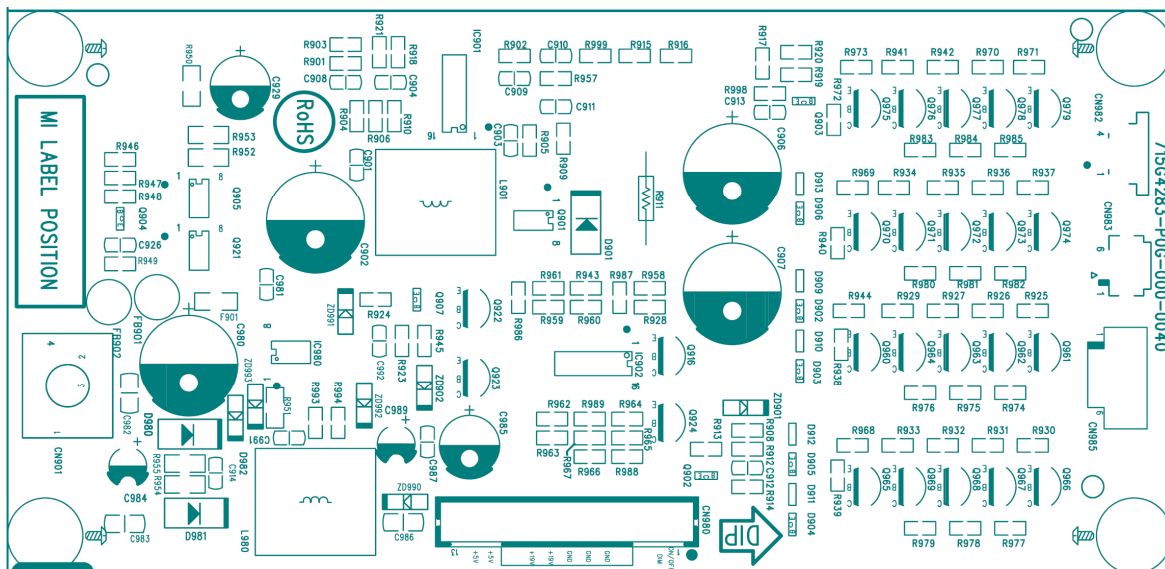


0200-100-0020

MI LABEL POSITION

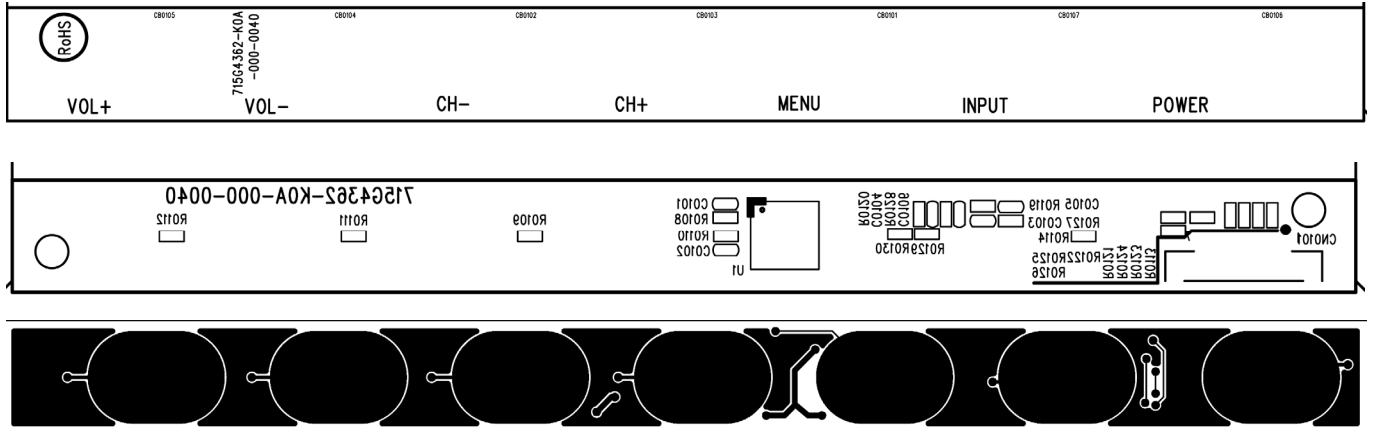
Converter Board

715G4283P0G000040



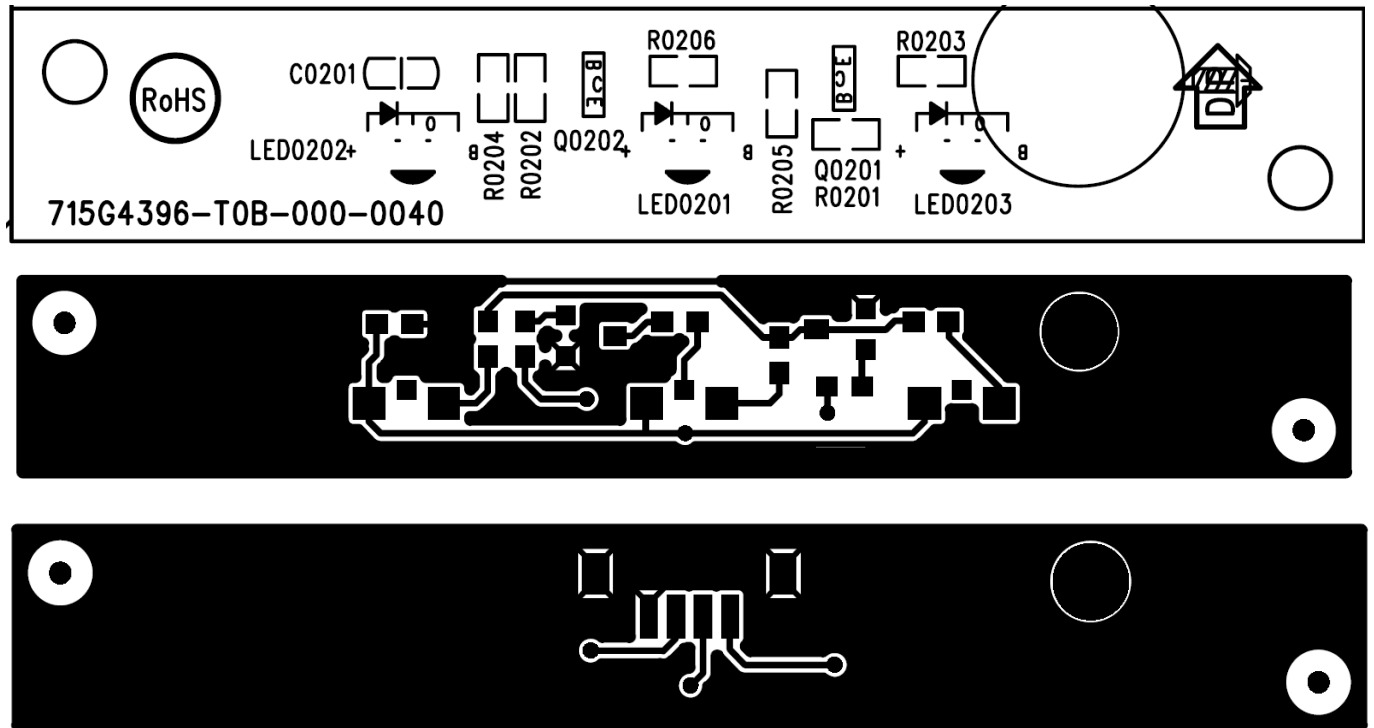
Key Board

715G4362K0A000004S



LED Board

715G4396T0B000004M



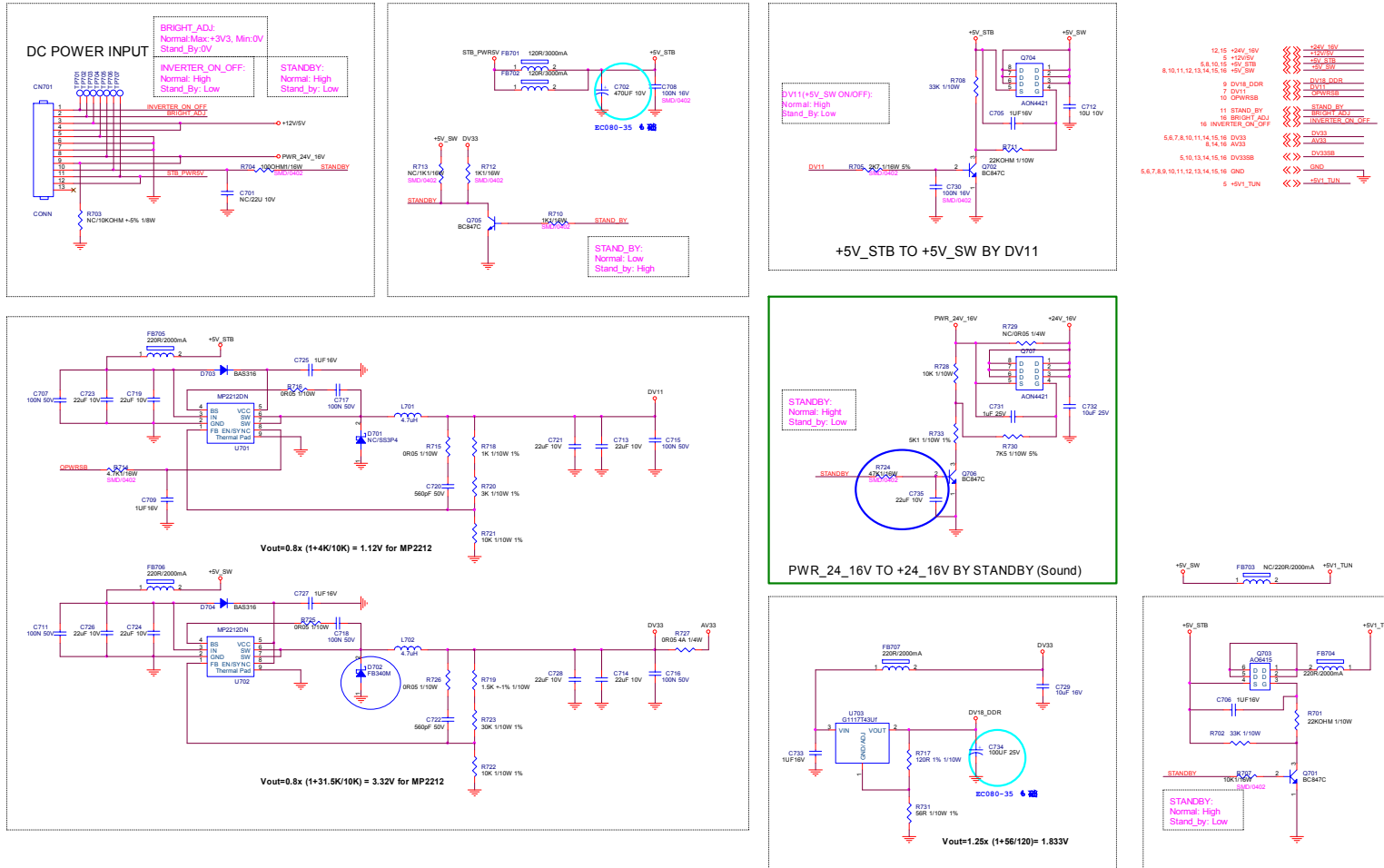
Schematic Diagram

Chapter 10

Main Board

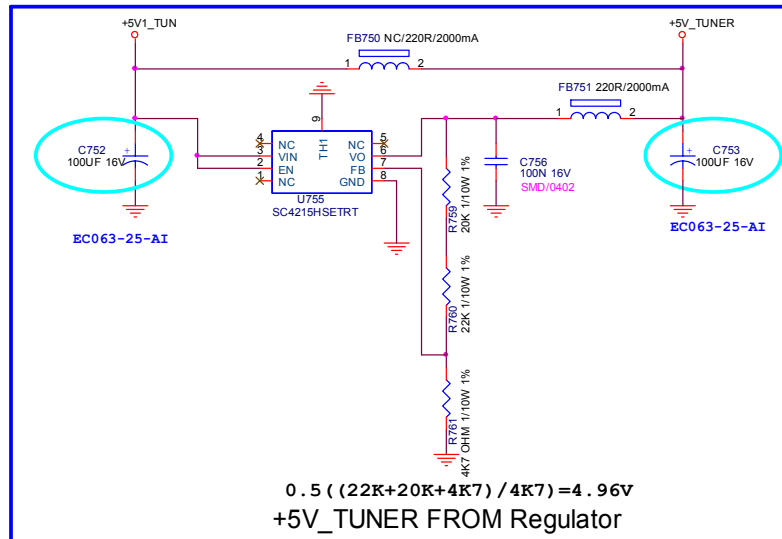
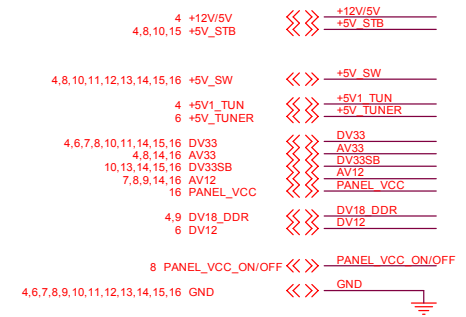
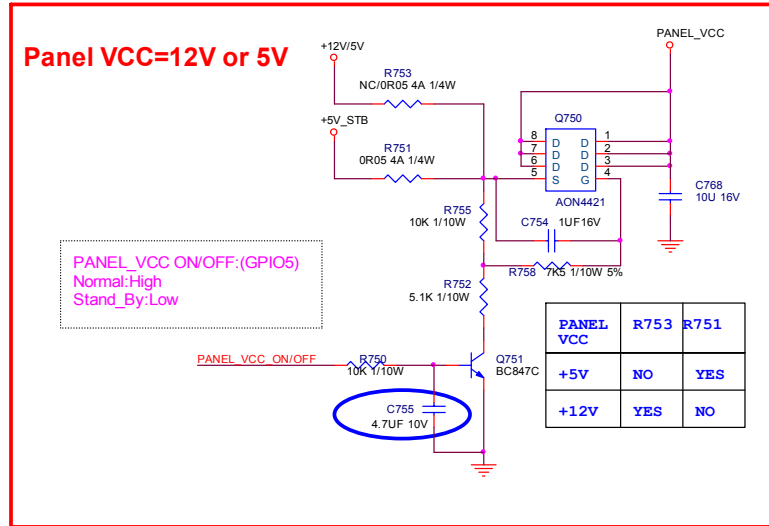
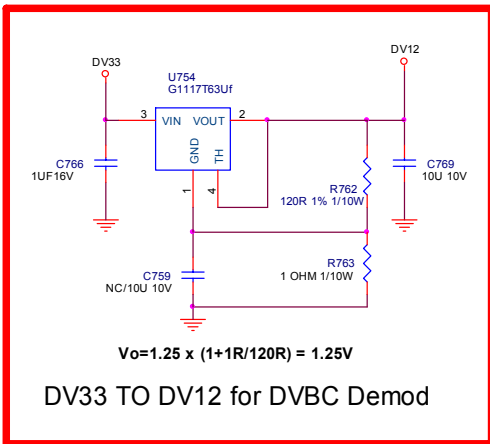
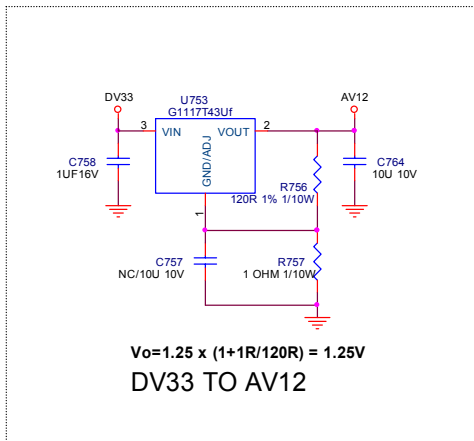
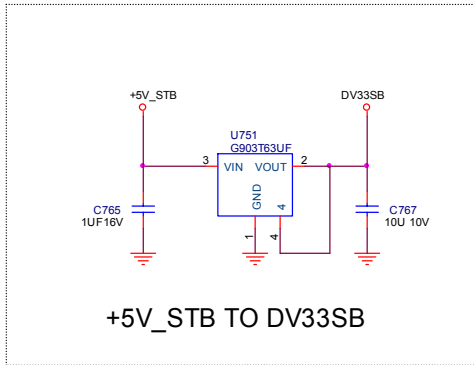
715G3876M0B001005K

EU MT5363 - 4 LAYERS for small size



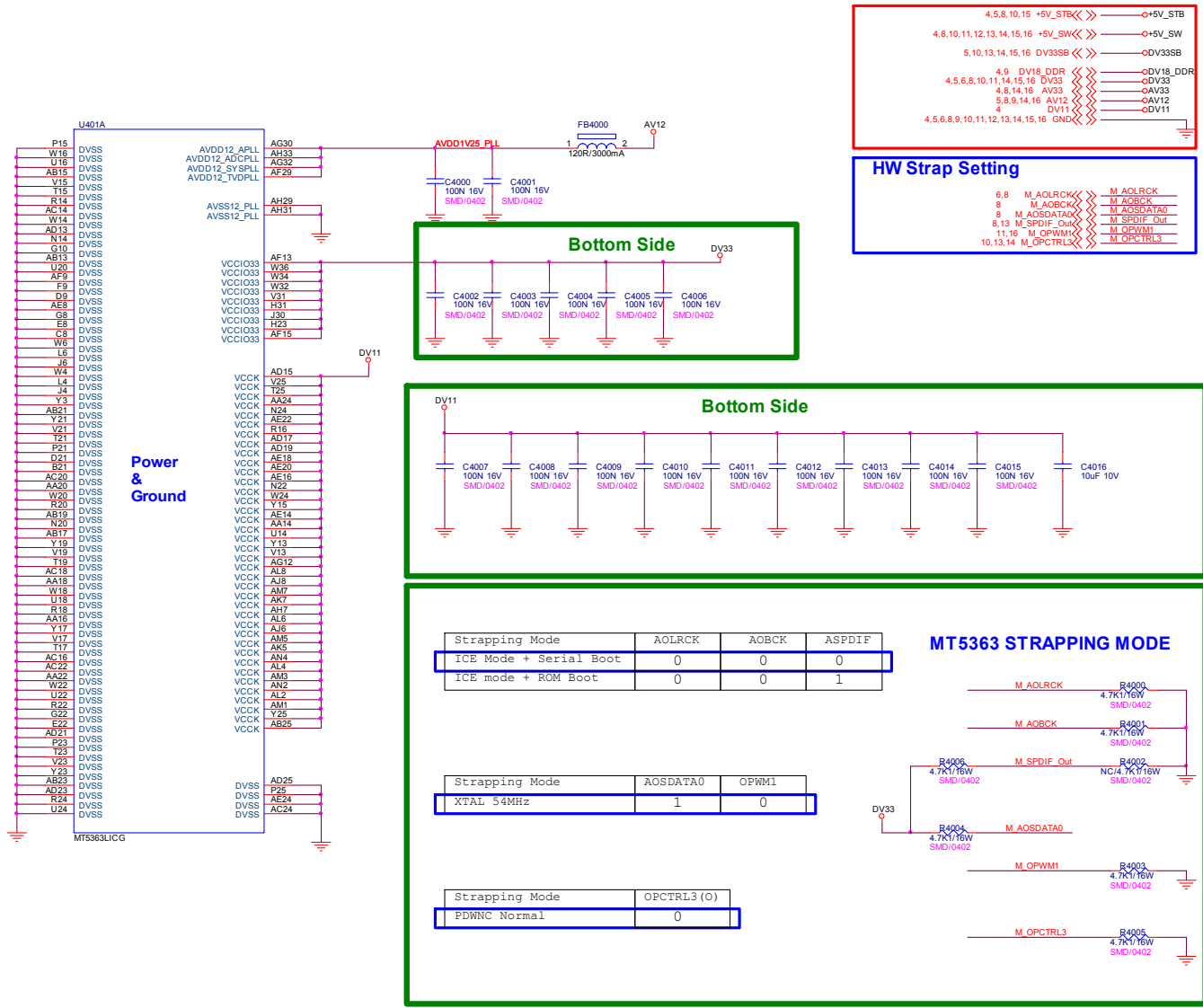
The item of this page start from *701*

T P V (Top_Victory_Electronics_Co.,_Ltd.)	OEM MODEL	DIV ACER AT7320M MAIN BOARD	Size	Custom
TPV MODEL	C3876-1A-AT7320M-10044			
Rev:00000001	SK_POWER.1	PCB NAME: 715G3876-1A		
Date: Tuesday, April 13, 2010	Sheet	4	of	10



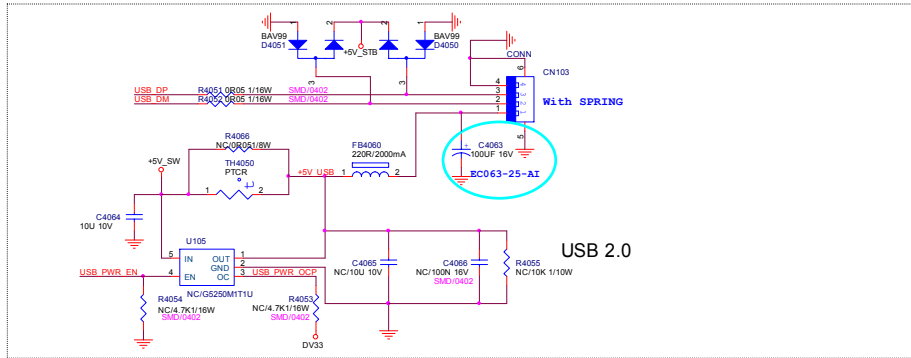
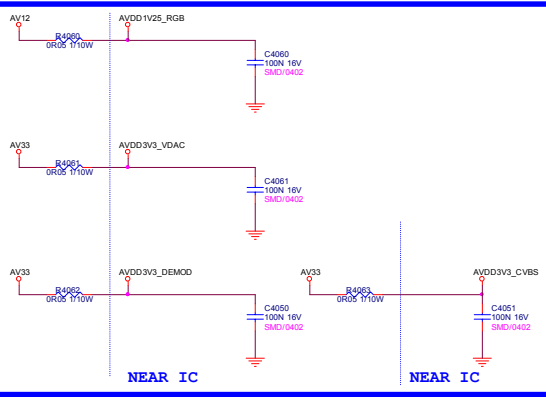
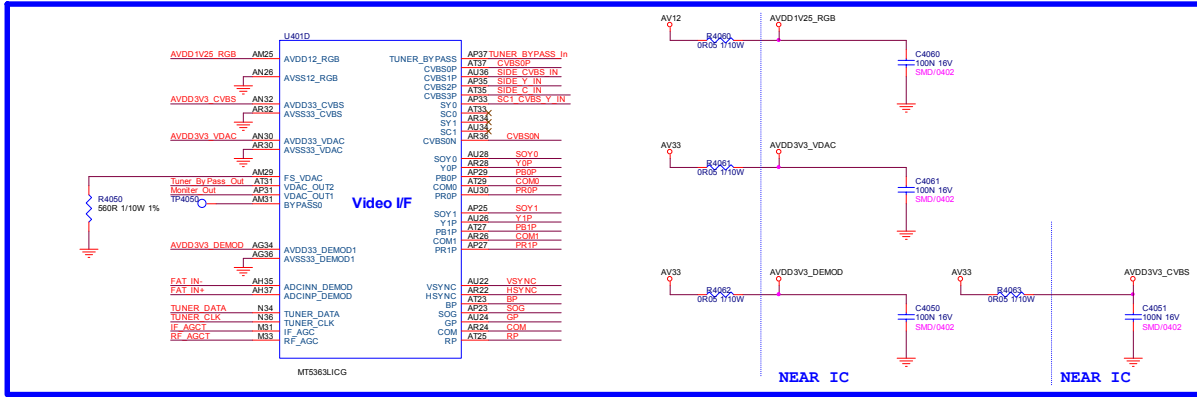
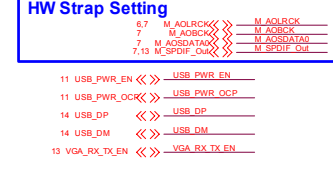
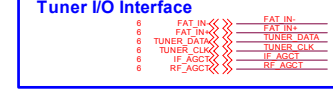
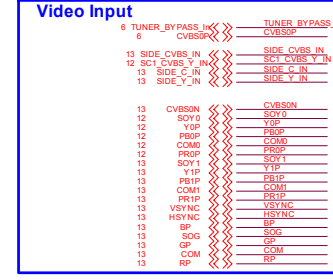
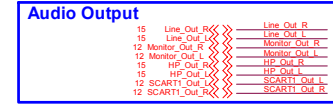
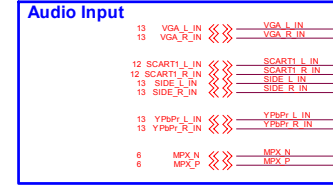
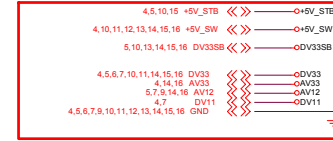
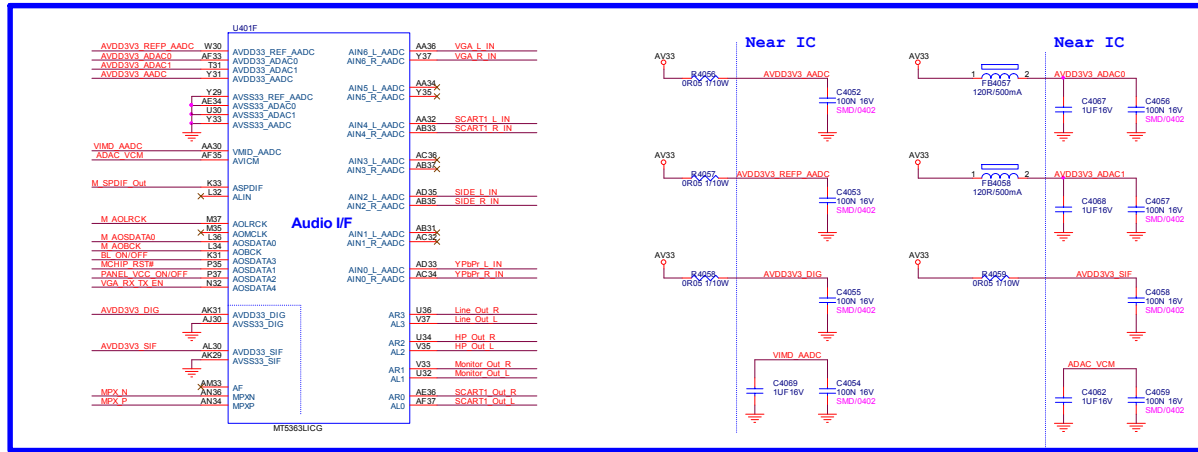
The item of this page start from "750"

T.P.V (Top Victory Electronics Co., Ltd.)	OEM MODEL	DTV ACER AT2326M MAIN BOARD	Size	Custom
紙扇瓜 廣 廠	G3876-1A-AT2326M-100414	TPV MODEL	Rev	2
Key Component	05. POWER-2	PCB NAME	715G3876-1A	稱 號
Date	Tuesday, April 13, 2010	Sheet	5 of 16	



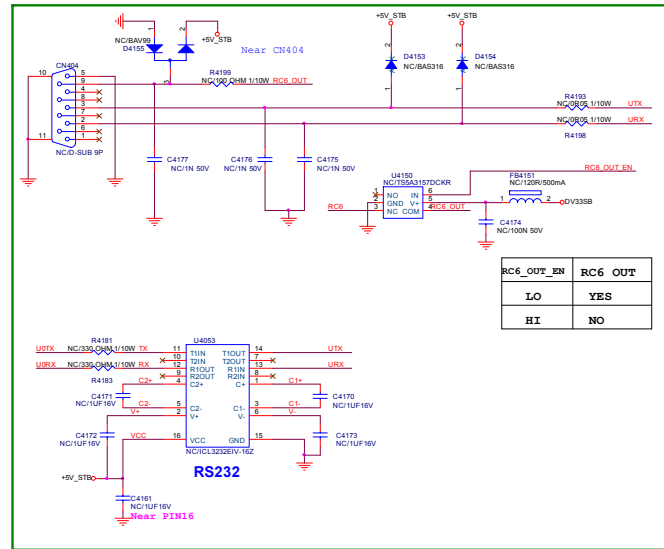
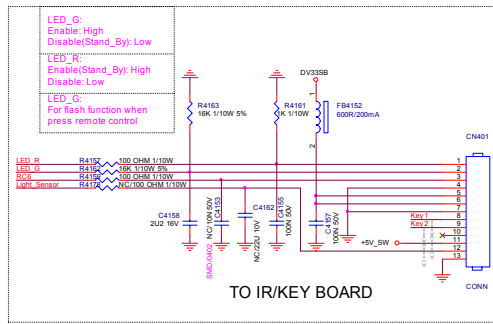
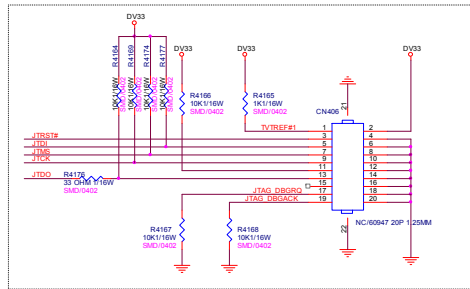
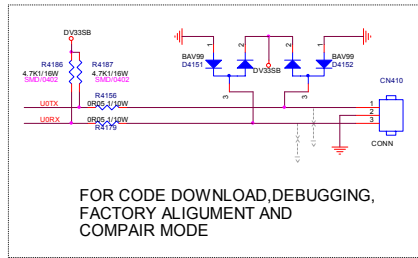
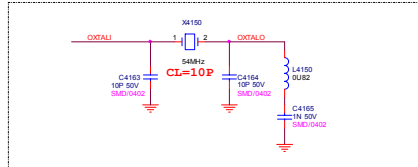
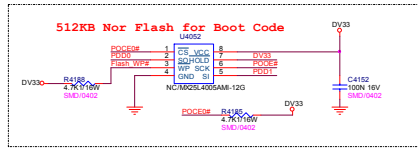
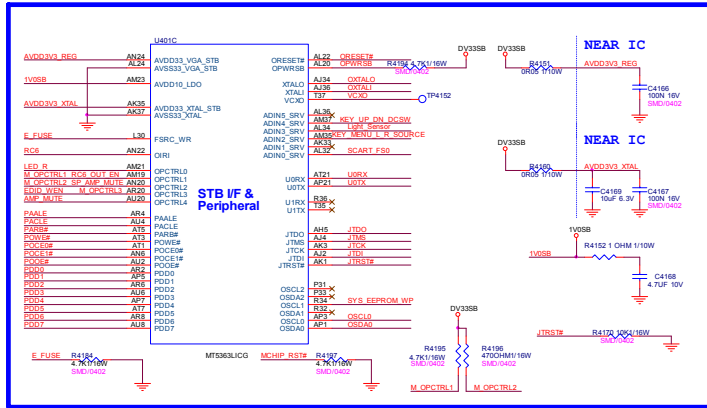
The item of this page start from "4000"

TPV (Top Victory Electronics Co., Ltd.)	OEM MODEL	DTV ACER AT2326M MAIN BOARD	Size	Custom
威爾瓦爾	G3876-1A-AT2326M-100414	TPV MODEL	Rev	
Key Component	07_MT5362 BYPASS/TRAP.	PCB NAME	715G3876-1A	※
Date	Tuesday, April 13, 2010	Sheet	7 of 16	

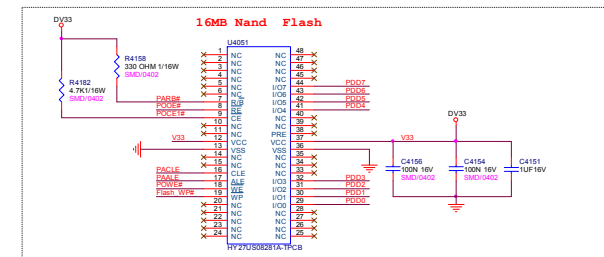
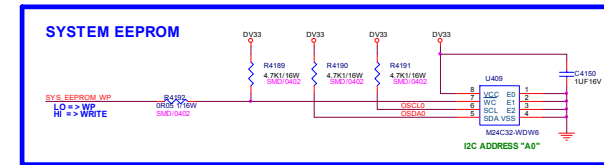
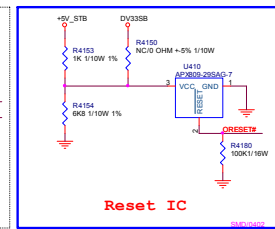
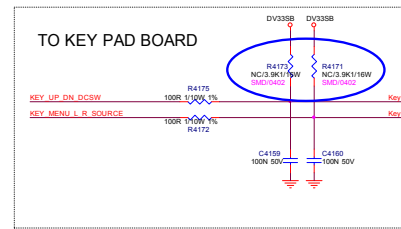


The item of this page start from "4050"

T.P.V (Top Victory Electronics Co., Ltd.)	OEM MODEL	DTV ACER AT2326M MAIN BOARD	Size	Custom
產品名稱	G3876-1A-AT2326M-100414	TPV MODEL		Rev
Key Component	08_MTS362 PERIPHERAL/USB2.0	PCB NAME	715G3876-1A	
Date	Tuesday, April 13, 2010	Sheet	8 of 16	

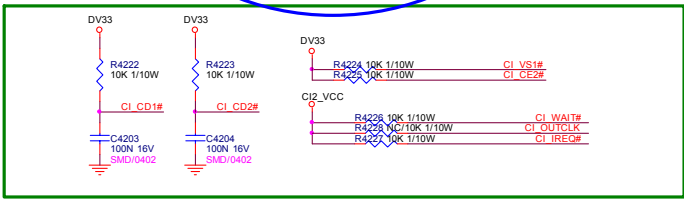
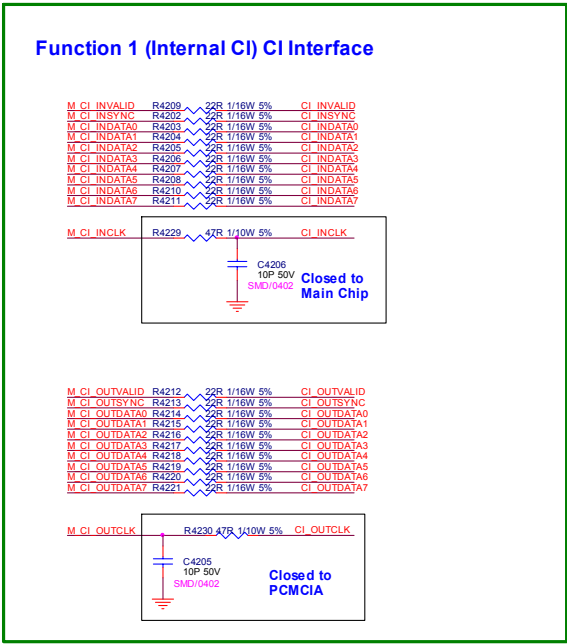
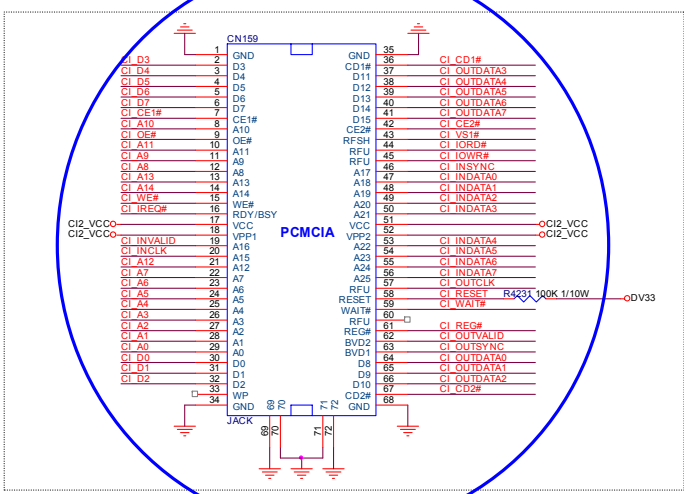
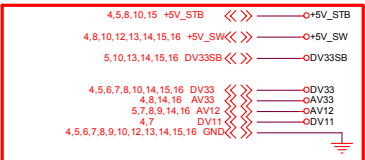
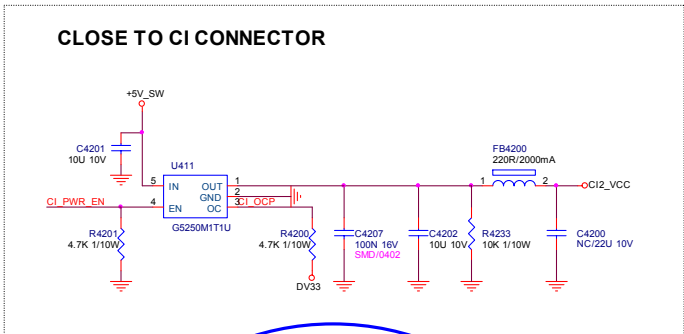
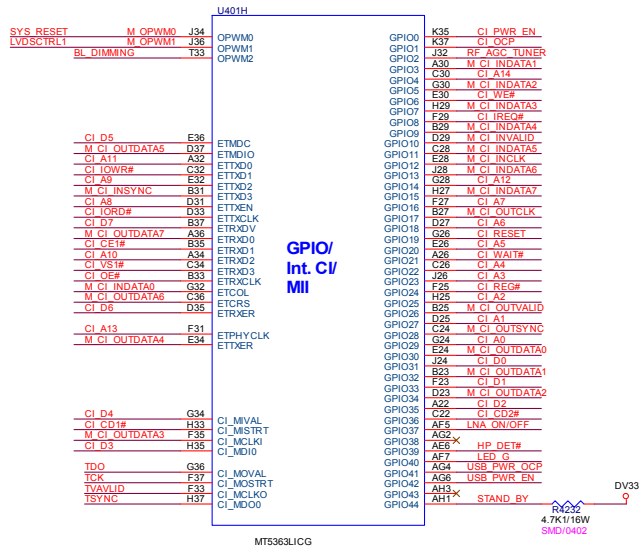


RC6_OUT_EN	RC6_OUT
LO	YES
HI	NO



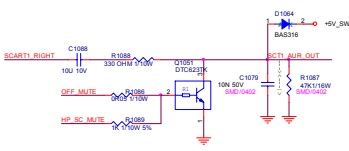
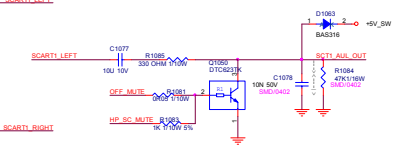
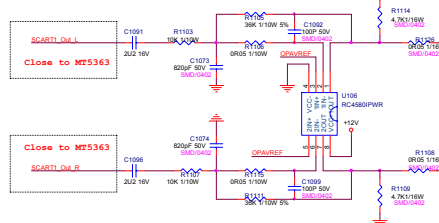
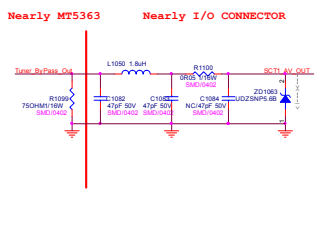
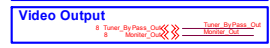
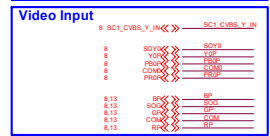
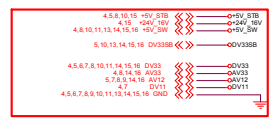
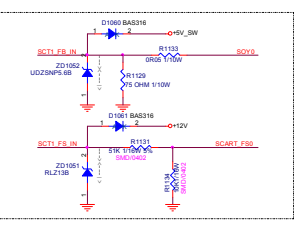
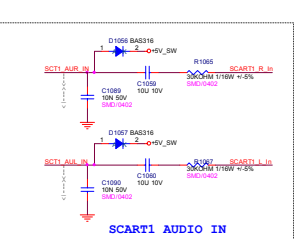
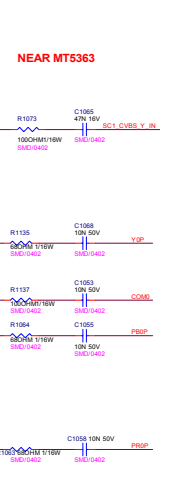
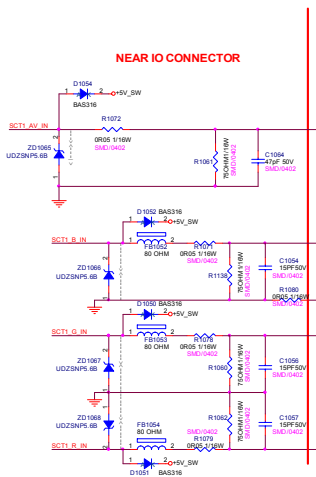
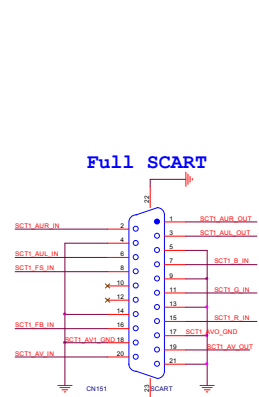
The item of this page start from "4150"

T P V	Top Victory Electronics Co., Ltd.	DEM MODEL	DIV ACER AT2328M MAIN BOARD	Size	Custom
图 纸 号 目 录	G3876-1A/AT2328M-100414	TPV MODEL			Rev
Key Component	10_FLASH/JTAG/UART/IR/RS232	PCB NAME	71503876-1A		Rev
Date	Wednesday, May 05, 2010	Sheet	10 of 16		Rev

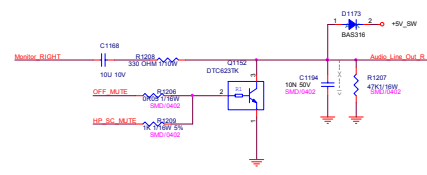
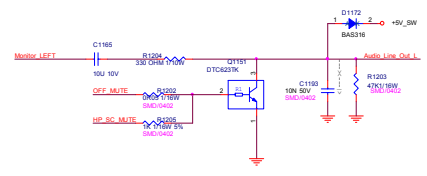
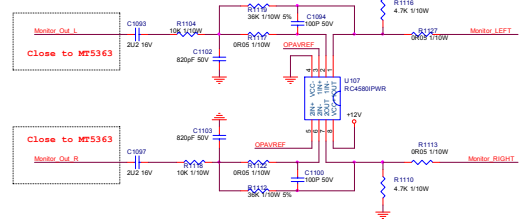
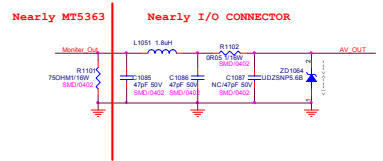
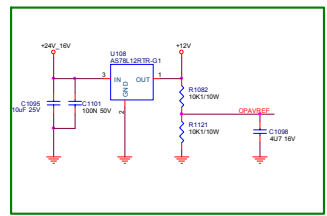
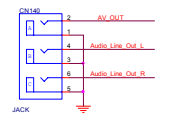


The item of this page start from "4200"

T P V (Top Victory Electronics Co., Ltd.)	OEM MODEL	DTV ACER AT2326M MAIN BOARD	Size	Custom
新南成 新南成	G3876-1A-AT2326M-100414	TPV MODEL		Rev
Key Component	11. CI CARD	PCB NAME	715G3876-1A	料号
Date	Wednesday, April 14, 2010	Sheet	11 of 16	

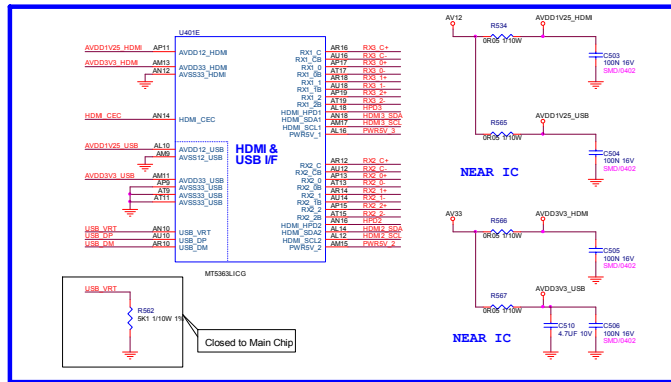
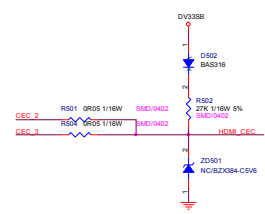


MONITOR OUT

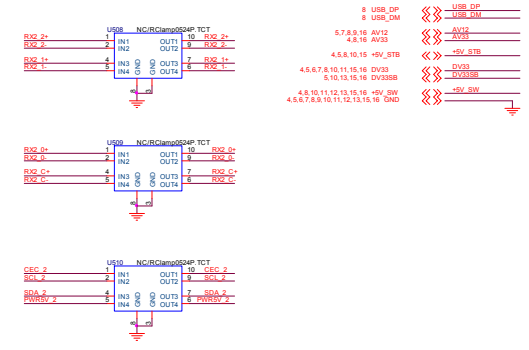


The item of this page start from "1050"

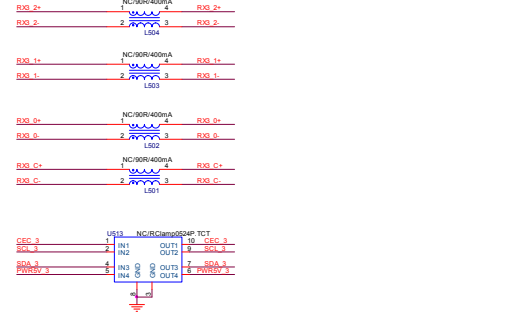
T P V (Top Victory Electronics Co., Ltd.)	DEM MODEL	DTV ACER AT220M MAIN BOARD	Stat	Custom
U. B. C. II	Q3876-1A-AT220M-10044	TPV MODEL	Rev	
Key Component	10_SCART1-Monitor OUT	PCB NAME	715033876-1A	0 0
Date	200809_09/13/2010	Sheet	12	16



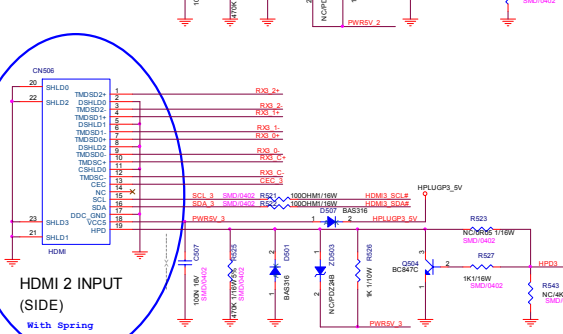
HDMI1 ESD PROTECTOR

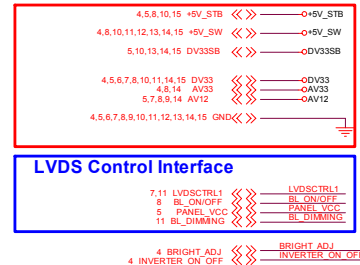
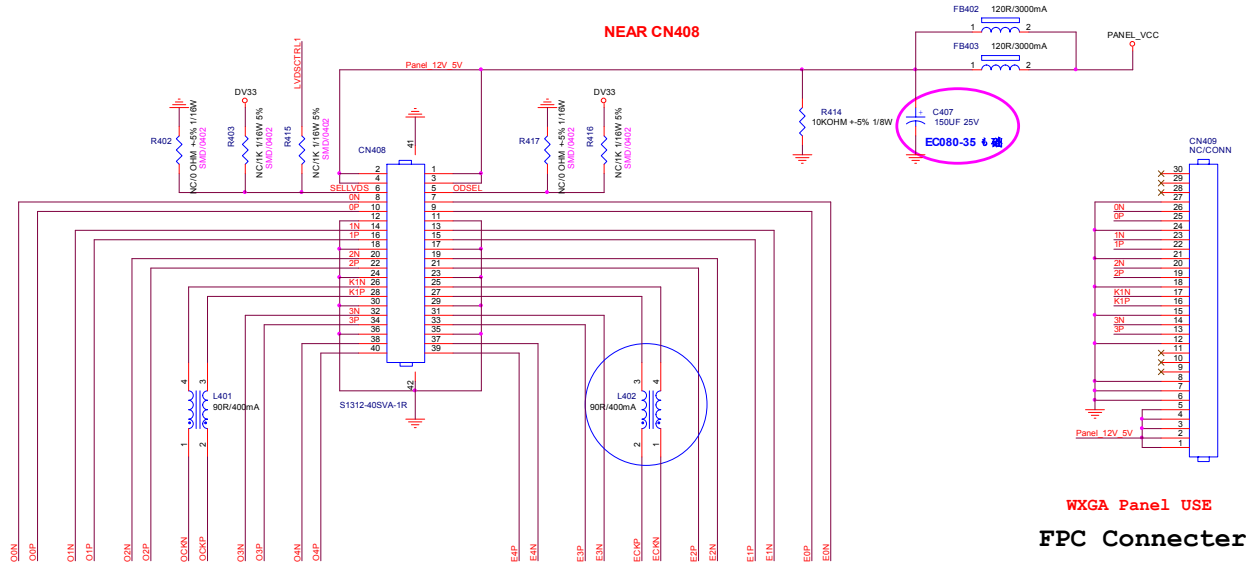


HDMI2 ESD PROTECTOR (SIDE)



HDMI 1 INPUT

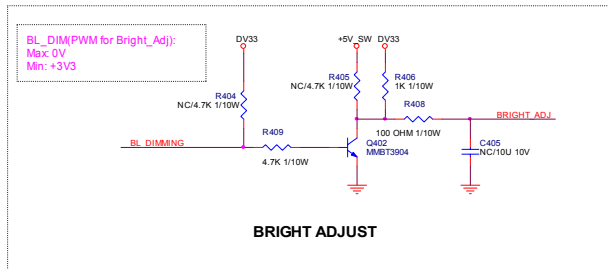




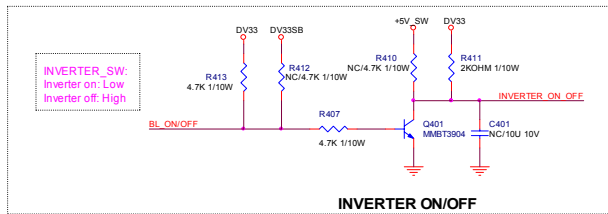
WXGA Panel USE
FPC Connector

FOR WXGA PANEL

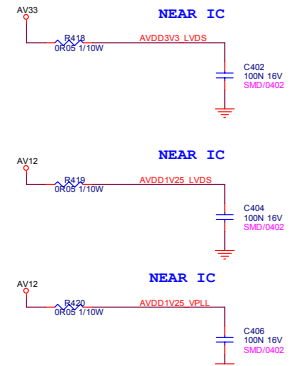
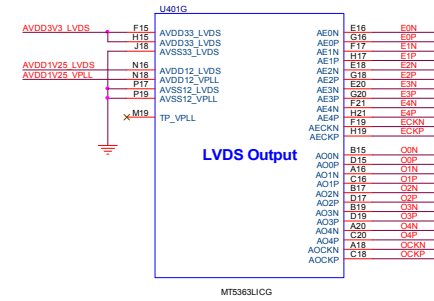
FOR FULL HD PANEL



BL CONTROL	R408	R406	C405
PWM CONTROL	100R	1K	N/C
DC CONTROL	5K6	1K	10U



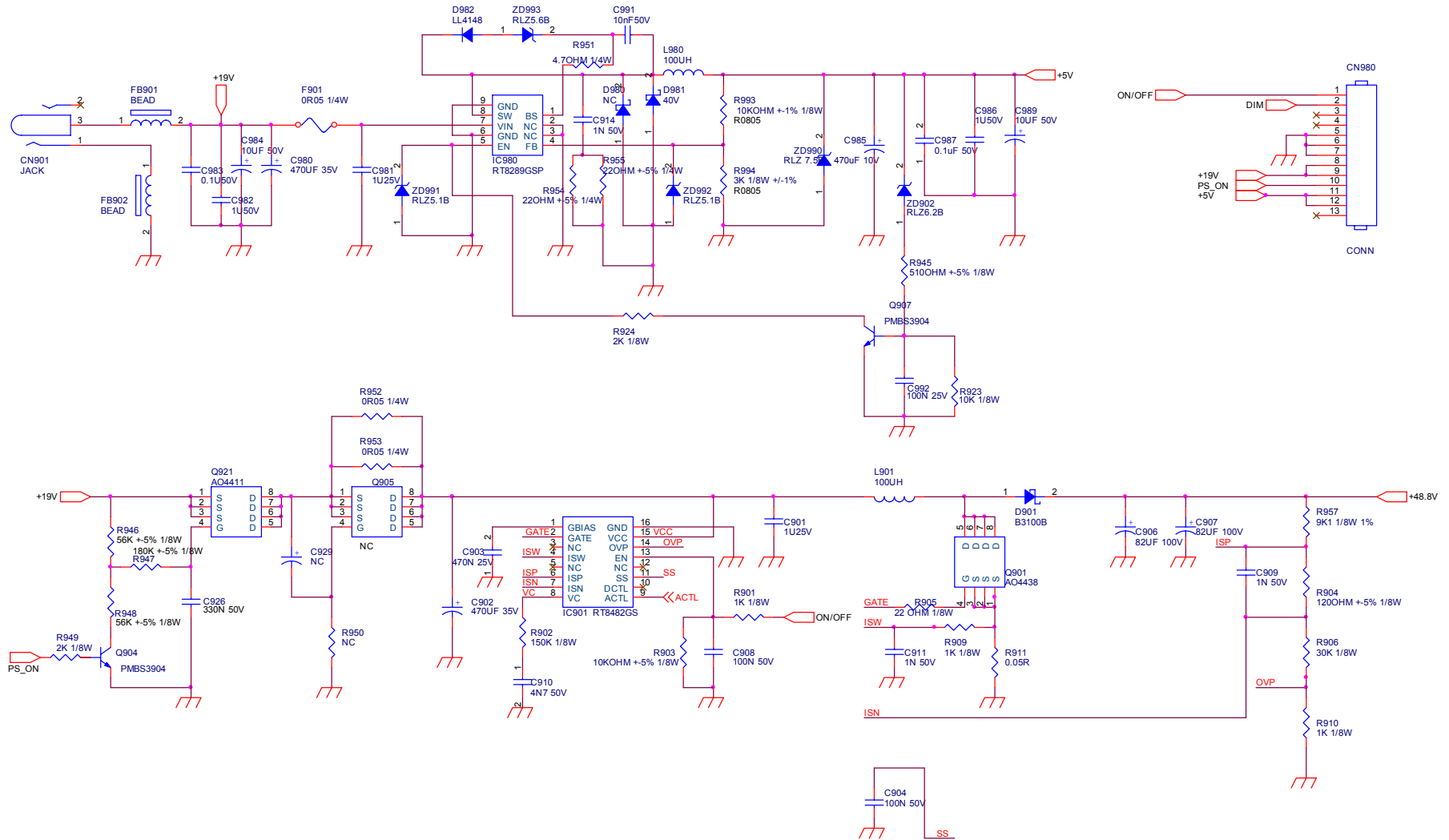
INVERTER ON/OFF	R410	R411
3V3	N/C	2K
5V	4K7	N/C



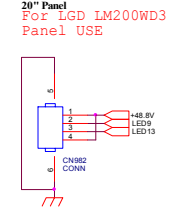
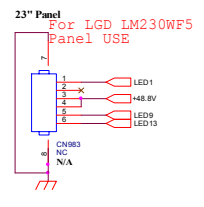
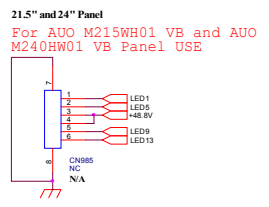
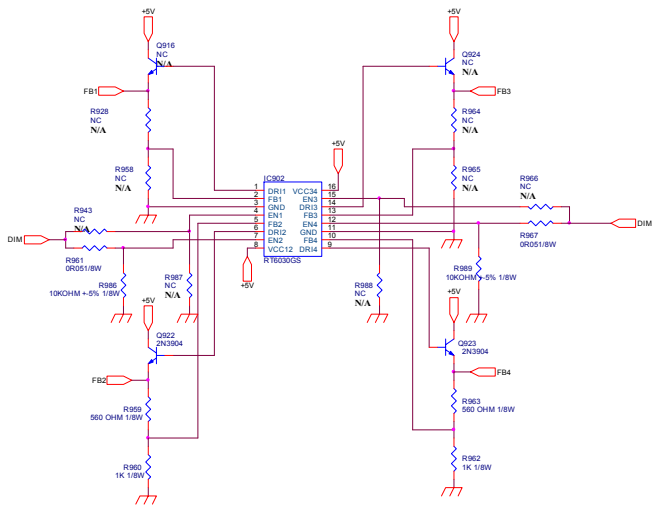
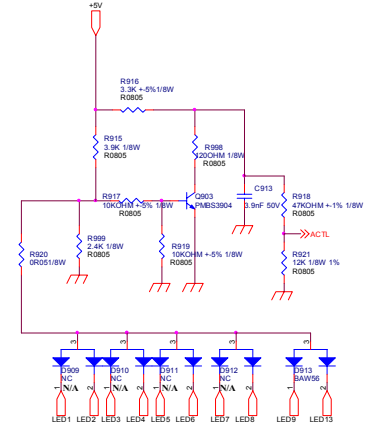
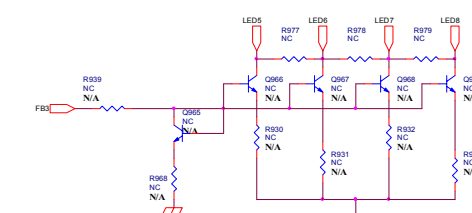
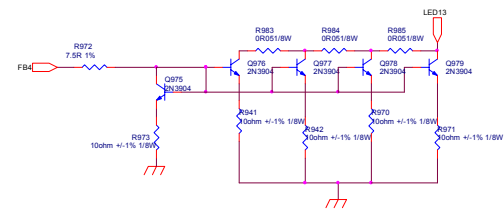
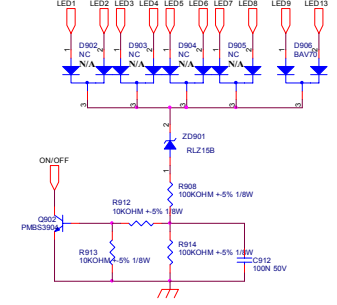
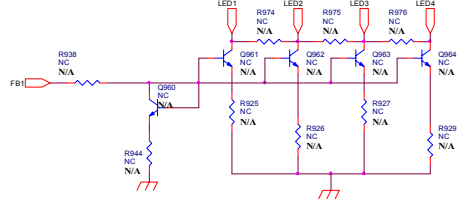
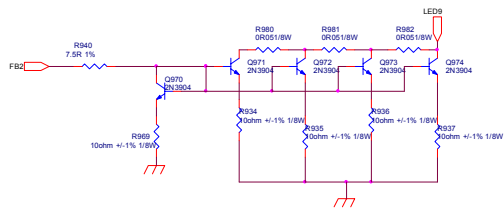
The item of this page start from "401"

T P V (Top Victory Electronics Co., Ltd.)	OEM MODEL	DTV ACER AT2326M MAIN BOARD	Size	Custom
話 術 成 果 表	G3876-1A-AT2326M-100414	TPV MODEL		Rev
Key Component	16. LVDS OUTPUT	PCB NAME	715G3876-1A	修 裝
Date	Wednesday, April 14, 2010	Sheet	16 of 16	

Converter Board
715G4283P0G0000040
AT2058ML

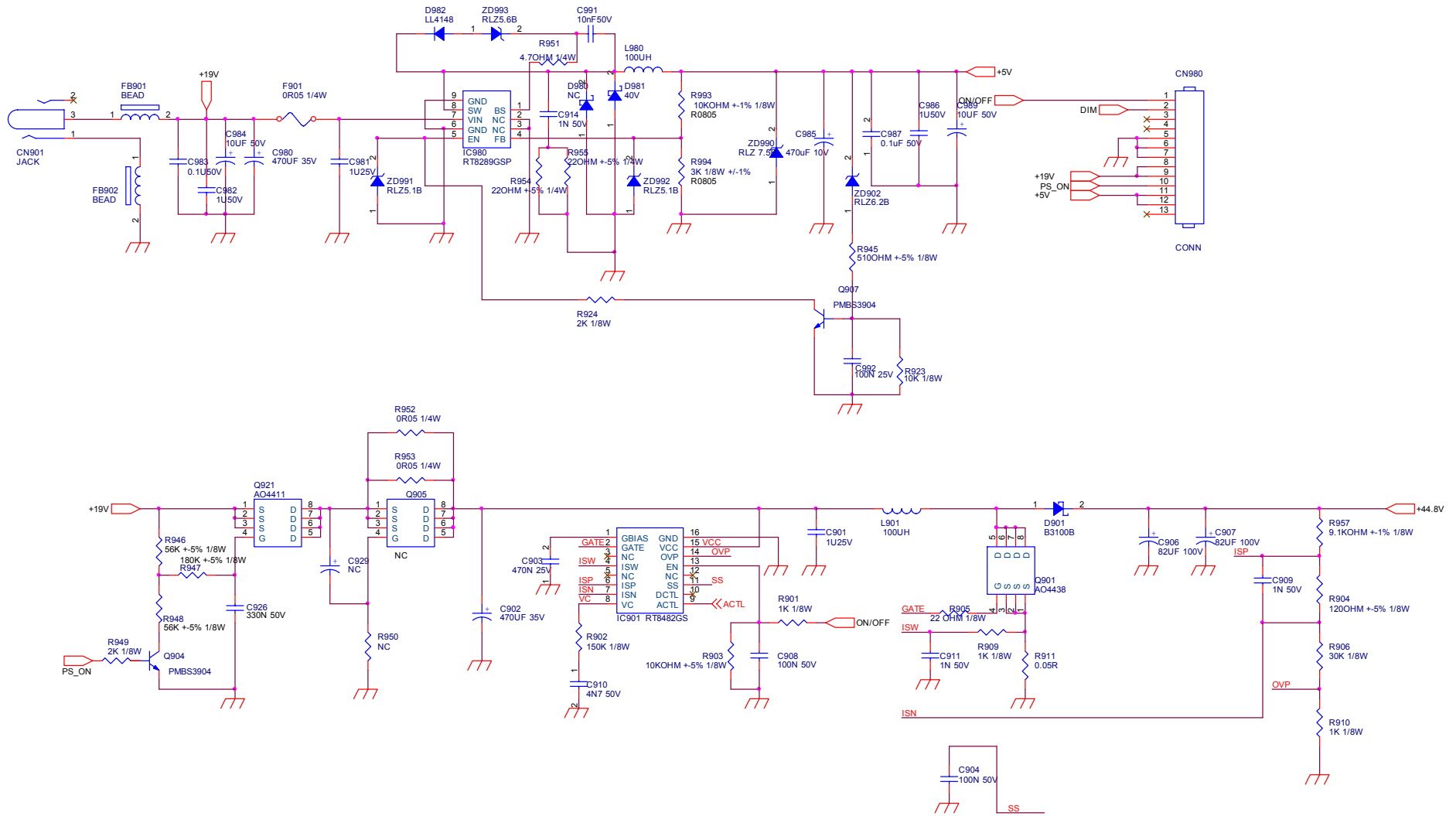


T P V (Top Victory Electronics Co., Ltd.)	OEM MODEL	Size
話筒 瓜 網 膜	TPV MODEL	Rev C
Key Component 02.D2D	PCB NAME	715G4283-POF-000-0040
Date Tuesday, July 13, 2010	Sheet	2 of 3

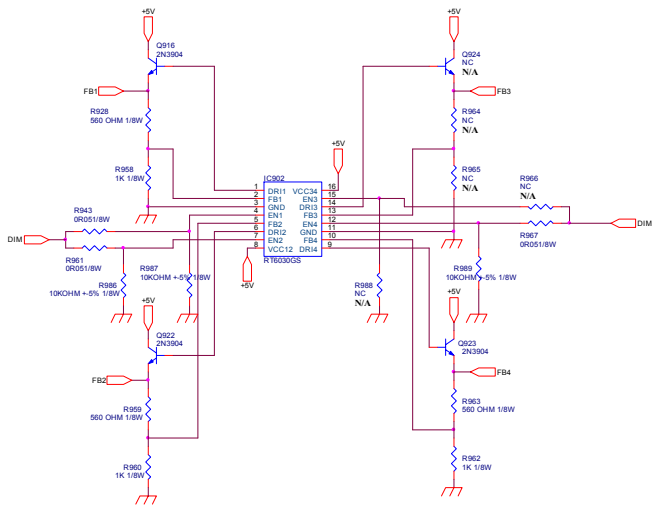
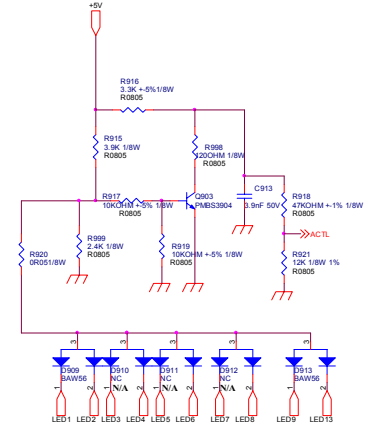
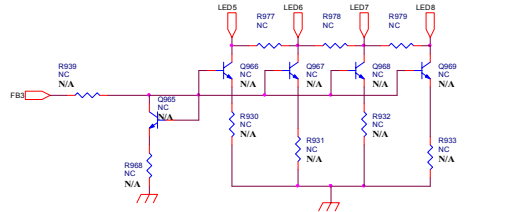
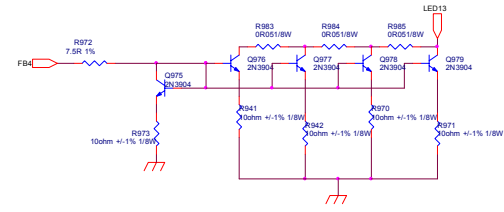
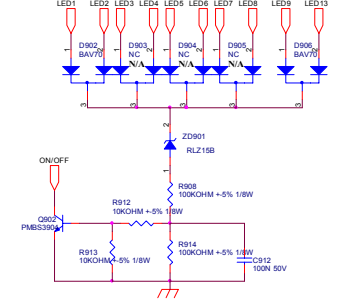
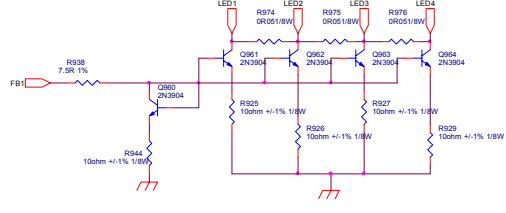
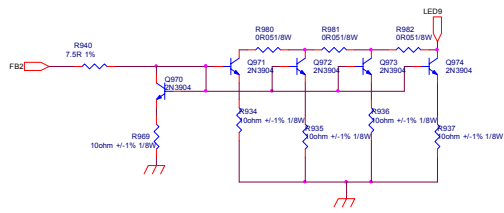


TPV (Top Victory Electronics Co., Ltd.)	OEM MODEL	Size
頂奇電通	TPV MODEL	Rev
Part Number 03.LED DRIVER	PCB NAME 71654283.PDF-000-0040	C
Date Monday, June 21, 2010	Sheet 3 of 3	R#

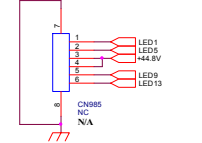
AT2358ML&AT2358MWL



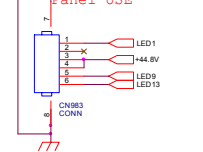
TPV (Top Victory Electronics Co., Ltd.)	OEM MODEL	Size
盛隔瓜銅廠	TPV MODEL LNTVAD443GAA5 FOR LGD LM230WF5	Rev B
Key Component 02.D2D	PCB NAME 715G4283-P0E-000-0040	修審
Date Tuesday, July 13, 2010	Sheet 2 of 3	



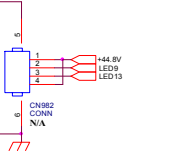
21.5" and 24" Panel
For AUO M215WH01 VB and AUO M240HW01 VB Panel USE



23" Panel
For LGD LM230WF5 Panel USE



20" Panel
For LGD LM200WD3 Panel USE

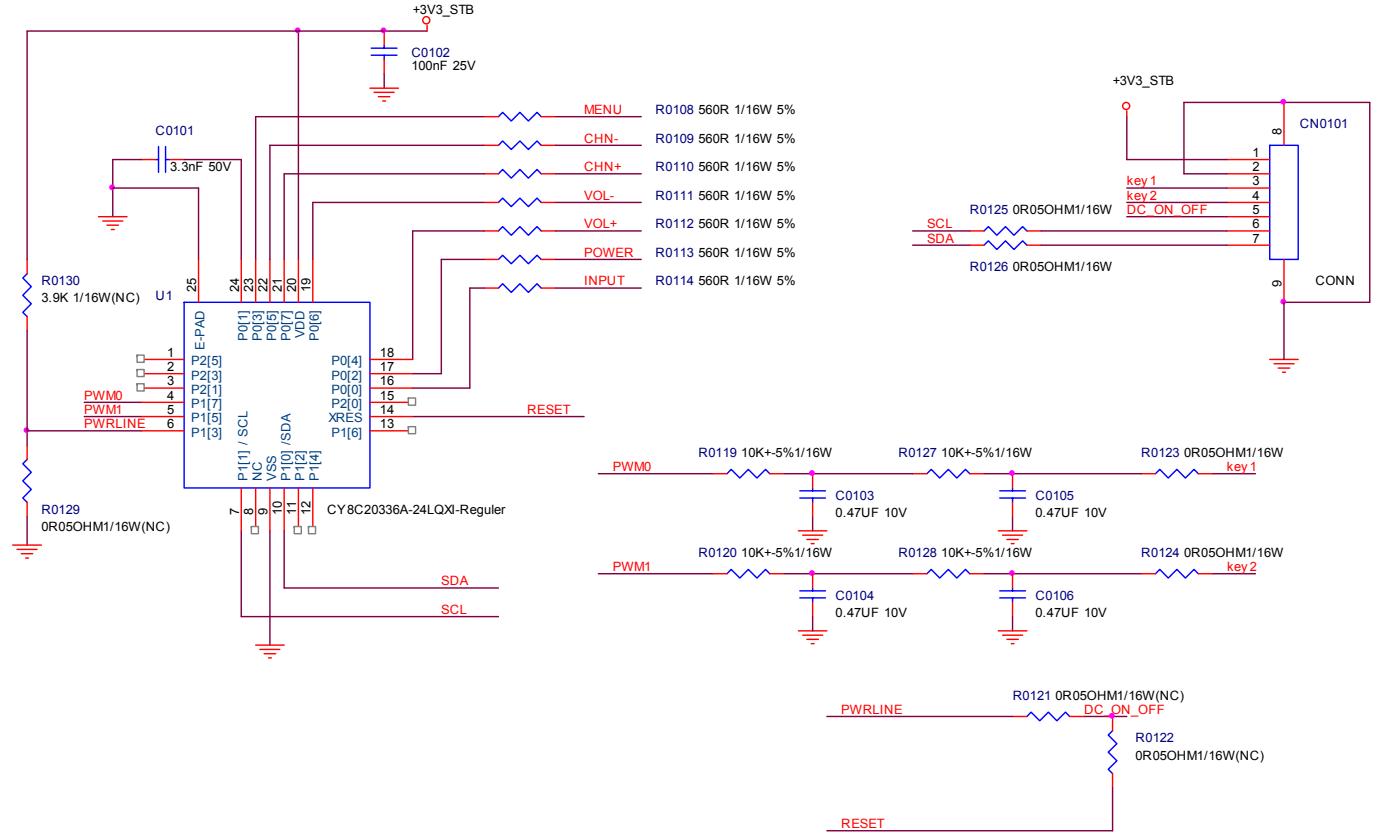


T P V (Top Victory Electronics Co., Ltd.)	DEM MODEL	Size
頂 威 電 子	TPV MODEL	Rev B
Part Number 03.LED DRIVER	PCB NAME 71650283.PRE-000-0040	R#
Date Friday, July 09, 2010	Sheet 3 of 3	

Key Board

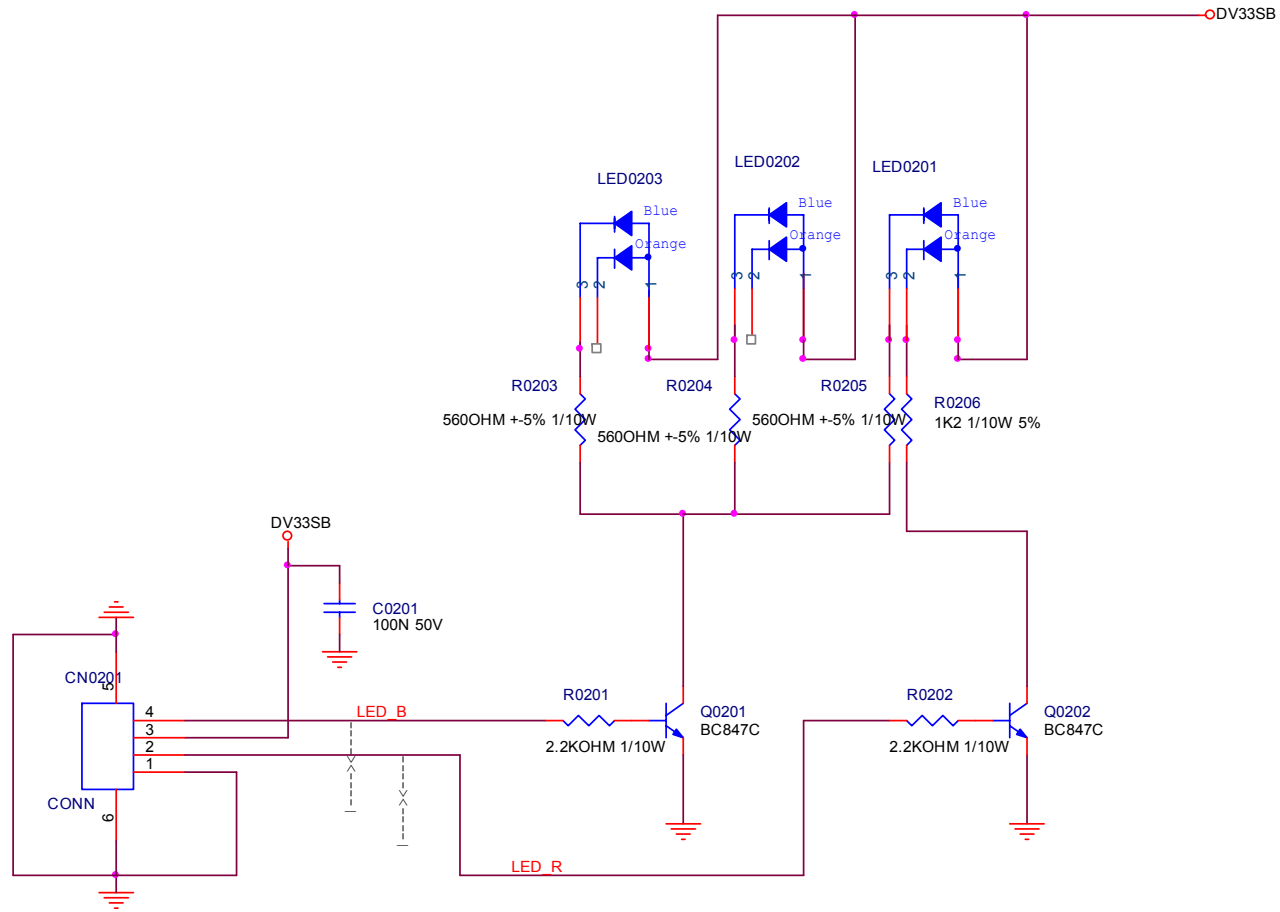
715G4362K0A000004S

- CB0101 MENU
TOUCH PAD 8X12 1 MENU
- CB0102 CHN-
TOUCH PAD 8X12 1 CHN-
- CB0103 CHN+
TOUCH PAD 8X12 1 CHN+
- CB0104 VOL-
TOUCH PAD 8X12 1 VOL-
- CB0105 VOL+
TOUCH PAD 8X12 1 VOL+
- CB0106 POWER
TOUCH PAD 8X12 1 POWER
- CB0107 INPUT
TOUCH PAD 8X12 1 INPUT



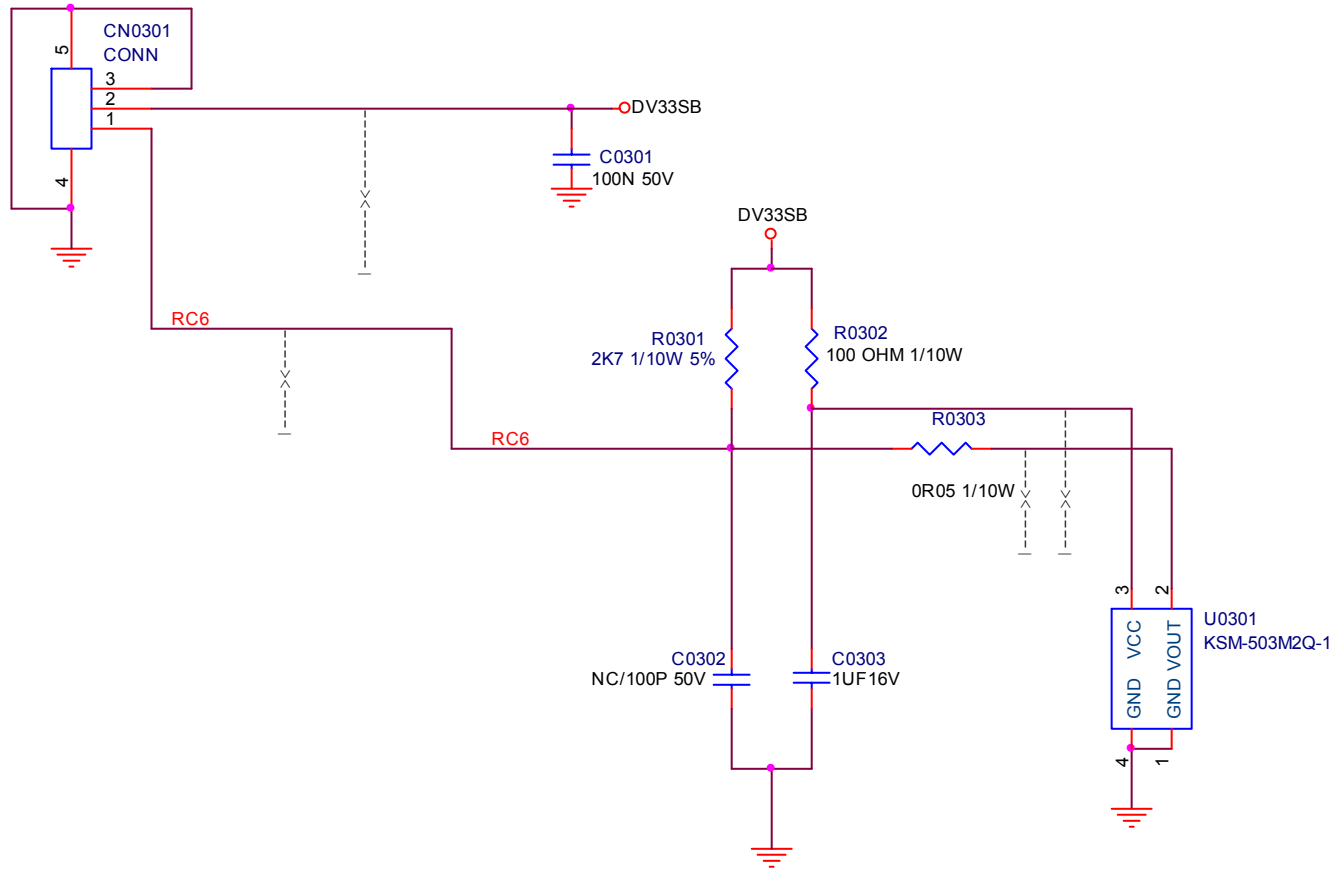
TPV (Top Victory Electronics Co., Ltd.)	OEM MODEL	Acer DVB KEY BOARD	Size	B
紙隔瓜網膜	G4362-K0A-000-0040	TPV MODEL	Rev	B
Key Component	2.0 Touch key	PCB NAME	715G4362-K0A	称參
Date	Friday, July 02, 2010	Sheet	2 of 2	<称參>

LED Board
715G4396T0B000004M



TPV (Top Victory Electronics Co. , Ltd.)	OEM MODEL	2K10 DVB ACER LED BOARD	Size	A
紙隔瓜網膜	G4396-1-ACER 100528	TPV MODEL	Rev	1
Key Component	01. LED	PCB NAME	715G4396	称爹 XX
Date	Friday, June 04, 2010	Sheet	2 of 2	

IR Board
715G4363R0B000004S



TPV (Top Victory Electronics Co., Ltd.)	OEM MODEL	2K10 DVB ACER IR BOARD	Size	Custom
結隔瓜網腹	G42363-1-ACER 100528	TPV MODEL	Rev	1
Key Component	02. IR	PCB NAME	715G4363	称爹
Date	Friday, May 28, 2010	Sheet	2 of 2	XX