



Liquid Crystal Display Television Service Manual

Chassis: CORTEZ+HUDSON

Product Type: LCD3704EU/LCD3705EU/LCD3706EU

LCD4204EU/LCD4033EU

Ver 1.0

Hisense Electric Co., Ltd.

R&D Center LCD Institute

Apr. 5 2006

Contents

Contents	- 2 -
Service Manual	- 4 -
1. Product Safety Servicing Guidelines	- 4 -
1-1 Fire And Shock Precautions.....	- 4 -
1-2 Warning.....	- 5 -
2. Product Function Specifications	- 5 -
2-1 LCD3704EU Product Function.....	- 5 -
2-2 LCD3704EU Specifications.....	- 8 -
3. Lcd Panel Spec	- 9 -
3-1 General Description.....	- 9 -
3-2 General Features.....	- 11 -
4. Block Diagram	- 12 -
4-1 Chassis Block Diagram.....	- 12 -
4-2 Video Processing Part.....	- 16 -
4-3 Audio Processing Part.....	- 17 -
5. Service Mode And Adjustment	- 18 -

5-1 Service Mode.....	- 18 -
6. Software Updating	- 21 -
6-1、Updating Cable.....	- 21 -
6-2、LCD3704EU Software Updating.....	- 22 -
7. LCD3704EU Explode View And Bom	- 31 -
8. Spare Parts List	- 32 -
9. Troubleshooting	- 33 -
10. Circuit Diagram	- 34 -

Service Manual

1. Product Safety Servicing Guidelines

1-1 Fire And Shock Precautions

1、Adequate ventilation must be provided to prevent heat build up inside unit. Keep the inside of unit free from foreign objects, such as hairpins, nails, paper, etc. Do not build the set into a bookcase or other enclosures in which it would be poorly ventilated. Do not place it on carpet or a bed as low ventilation boles could become obstructed.

2、Do not set liquids, including flower vases and vessels filled with chemicals or water etc., On top of the unit as liquid could get inside the unit. If a hazardous object falls inside the TV set, unplug it immediately and call a qualified technician for removal.

3、When placing or moving the TV set, take care to insure that the power cord is fitted into the allocated slot.

To avoid damage to the power cord, never allow heavy objects such as the TV set itself to be placed on the power cord. Keep cord away from radiating appliances. Do not allow cord to become knotted or tangled. Do not lengthen the cord. When removing the power plug from the socket, always hold onto the plug, never pull by the cord.

4、This TV set shall be connected to a main socket outlet with a protective earthing contactation.

5、The main plug and main switch should be remain readily operable after installation.

6、 No naked flame sources, such as lighted candles, should be placed on the apparatus.

7、 Minimum distances around the apparatus for sufficient ventilation

8、 The use of apparatus in moderate climates.

1-2 Warning

1、 During vacation or other occasions when you will not be using the set for an extended period, remove the power plug from the socket.

2、 This appliance should not be operated by children or infirm persons without adequate supervision.



The lightning flash with arrowhead symbol, within an equilateral triangle is intended to alert the user to the presence of uninsulated dangerous voltage within the products enclosure that may be of sufficient magnitude to constitute a risk of electric shock.



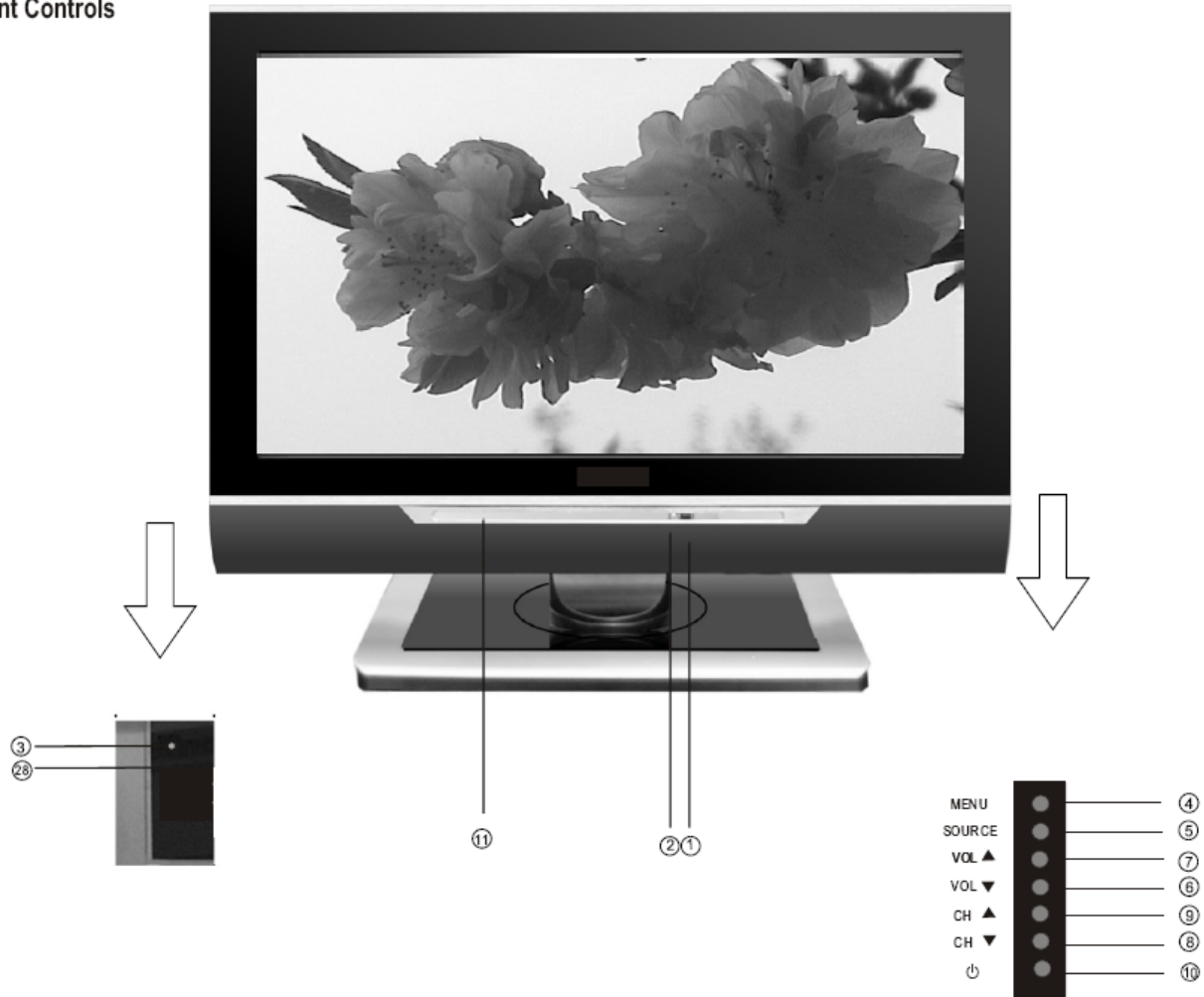
The exclamation point within an equilateral triangle is intended to alert the user to the presence of important operating and maintenance(servicing) instructions in the literature accompanying the set.

2. Product Function Specifications

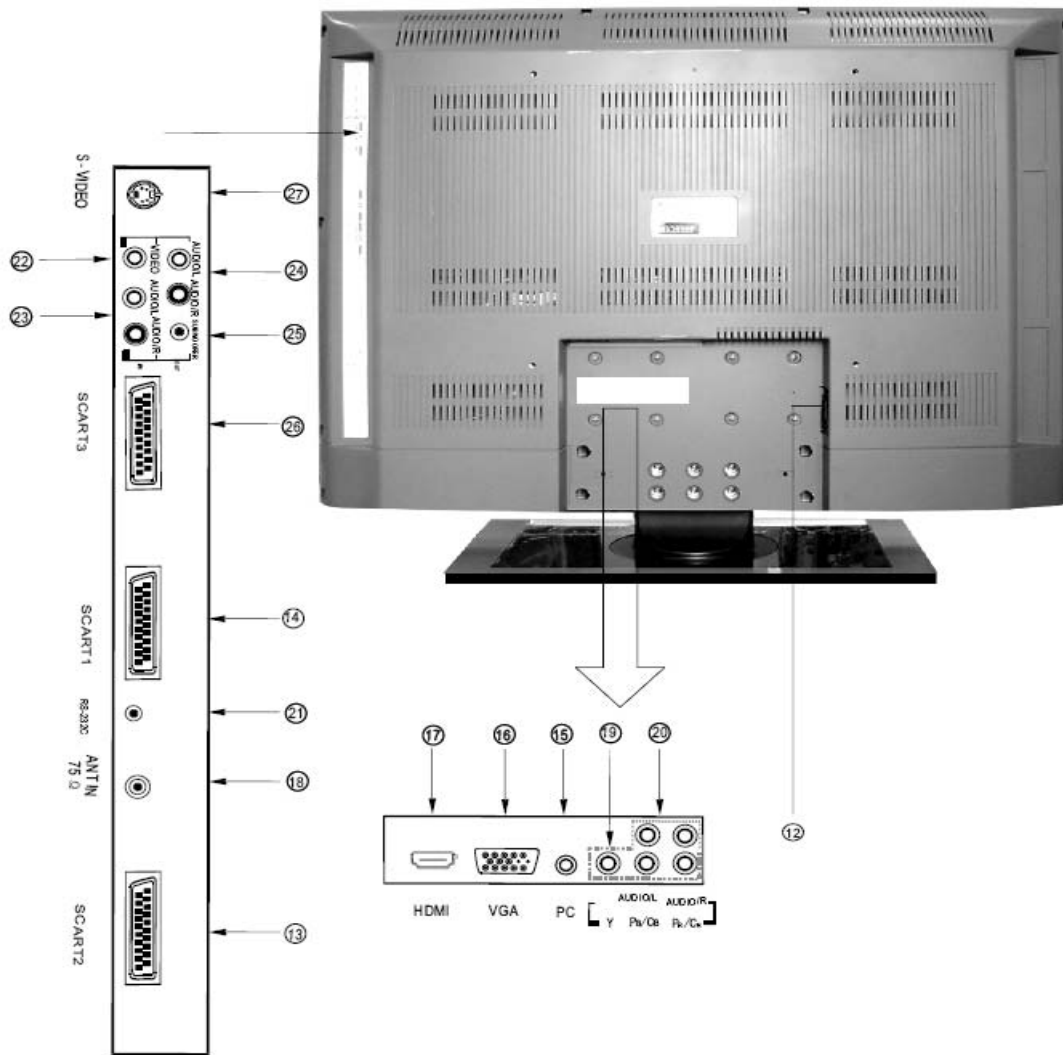
2-1 LCD3704EU Product Function

LCD TV Service Manual

Front Controls



LCD TV Service Manual



- ① Remote Sensing Window
- ② Power indicator
- ③ Headphone output
- ④ Menu button
- ⑤ Source select
- ⑥ Volume down / cursor left
- ⑦ Volume up / cursor right
- ⑧ Channel down / cursor down
- ⑨ Channel up / cursor up
- ⑩ Power button (standby)

- ⑪ Power Switch (ON/OFF)
- ⑫ AC Power Socket
- ⑬ SCART2 connector
- ⑭ SCART1 connector
- ⑮ PC audio input
- ⑯ PC VGA input
- ⑰ HDMI input
- ⑱ CATV antenna input
- ⑲ YPBPr/YCbCr input
- ⑳ Audio input

- ㉑ RS232C DEBUG input
- ㉒ AV video input
- ㉓ AV audio input
- ㉔ Audio output
- ㉕ Subwoofer output
- ㉖ SCART3 connector
- ㉗ S-video input
- ㉘ PIP headphone output

Note: The above figures are for reference only, please refer to the actual units to determine their appearance.

LCD TV Service Manual

- Multimedia – TV receiver, Video monitor and PC display, all in one.
- Wider viewing angle, 16:9 display – 176° viewing angle at typical value.
- Digital display device – truthfully reproducing the images, without distortion or blurring, irrespective of magnetic or geomagnetic effect.
- 200 channels storage
- Sleep timer
- Teletext with 1000 pages memory
- NICAM
- Three SCART interface
- Multi-language OSD

2-2 LCD3704EU Specifications

LCD panel	940.3mm TFT LCD
Television system	Multi- system(PAL, SECAM)
Channel coverage	VHF-L: E2-S8 VHF-H: S9-S37 UHF: S38-E69
Analog RGB mode	640X480/60Hz, 800X600/60Hz, 1024X768/60Hz, 1280X1024/60Hz
Y PB/CB PR/CR mode	480I/60Hz, 480P/60Hz, 576I/50Hz, 576P/50Hz, 720P/50Hz, 720P/60Hz, 1080I/50Hz, 1080I/60Hz
Resolution	1366X768
Contrast	600:1
Brightness	500cd/m2
Viewing angle	176°(H)/176°(V)
Power source	AC160V--240V, 50/60Hz
Power consumption	200W
Audio output	5W+5W

LCD TV Service Manual

Connection interface	RF input: Cable/ antenna RF ×1 VIDEO input: YPBPR ×1 (1.0/0.286Vp-p 75W) , CVBS×1, Y/C×1, GRAPHIC input: Analog RGB 15pin(VGA) ×1(0.7Vp-p 75W) Digital RGB(DVI-D) X1 AUDIO input: SCART 1 audio, SCART 2 audio and SCART3 audio CVBS audio, Mini-jack for PC (3.5 Φ)X1 AUDIO output: SCART 1 audio, SCART 2 audio and SCART3 audio Subwoof audioX1 SCART INPUT: SCART1 (for RGB) SCART2 (for CANAL+) SCART3 (for Video and Y/C) OTHER: HDMI RS232C X 1 (for software updating)
Dimensions	950mmX760mmX107mm
Weight	32kg
Supplied accessories	remote control ac power cord batteries
Design and specifications are subject to change without notice.	

3. Lcd Panel Spec

3-1 General Description

LCD3704EU' S Lcd Panel is a Color Active Matrix Liquid Crystal Display with an integral External Electrode Fluorescent Lamp (EEFL) backlight system. The matrix employs a-Si Thin Film Transistor as the active element.

It is a transmissive type display operating in the normally black mode. It has a 37.02 inch diagonally measured active display area with WXGA resolution (768 vertical by 1366 horizontal pixel array)

Each pixel is divided into Red, Green and Blue sub-pixels or dots which are arranged in vertical stripes.

Gray scale or the luminance of the sub-pixel color is determined with

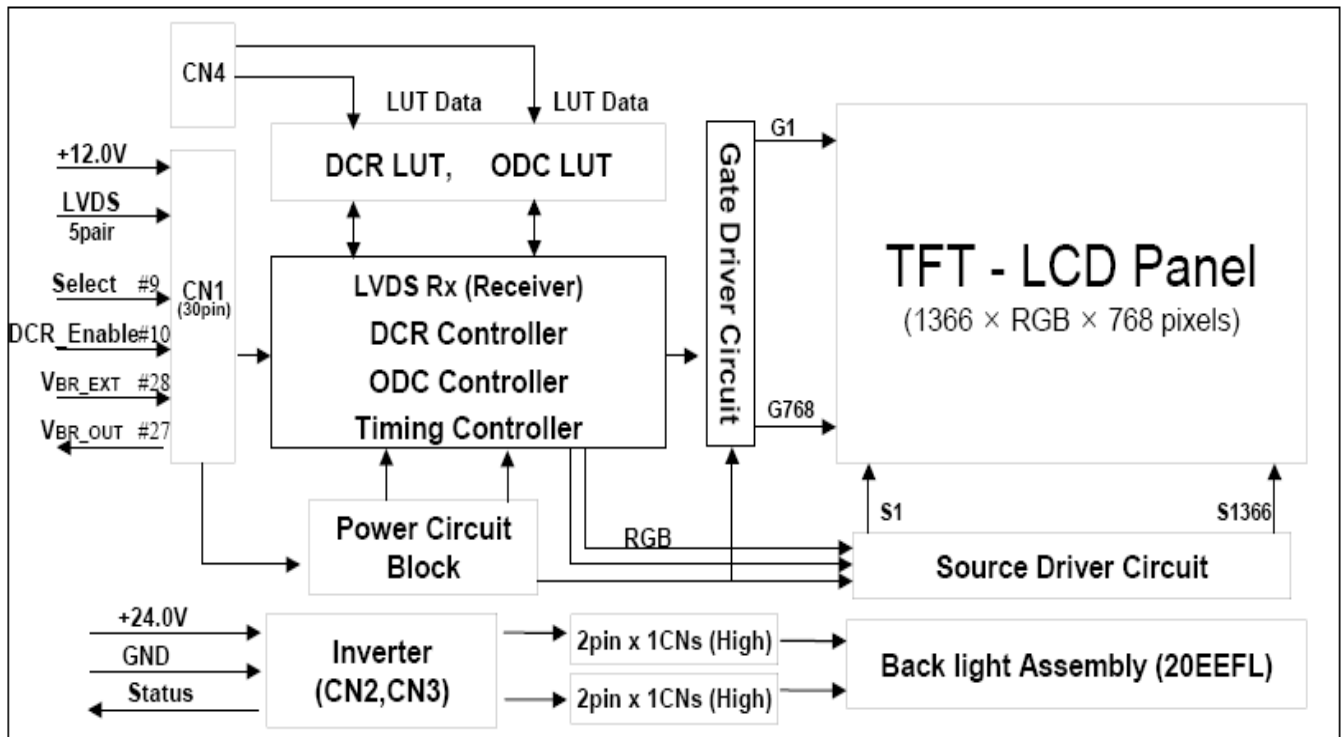
a 8-bit gray scale signal for each dot,

thus presenting a palette of more than 16.7M(true) colors.

It has been designed to apply the 8-bit 1 port LVDS interface.

It is intended to support LCD TV, PCTV where high brightness, super wide viewing angle, high color gamut,

high color depth and fast response time are important.



The LC420W02 is a Color Active Matrix Liquid Crystal Display with an integral Cold Cathode Fluorescent

Lamp (CCFL) backlight system. The matrix employs a-Si Thin Film Transistor as the active element.

It is a transmissive type display operating in the normally black mode.

It has a 42.0 inch diagonally measured active display area with WXGA

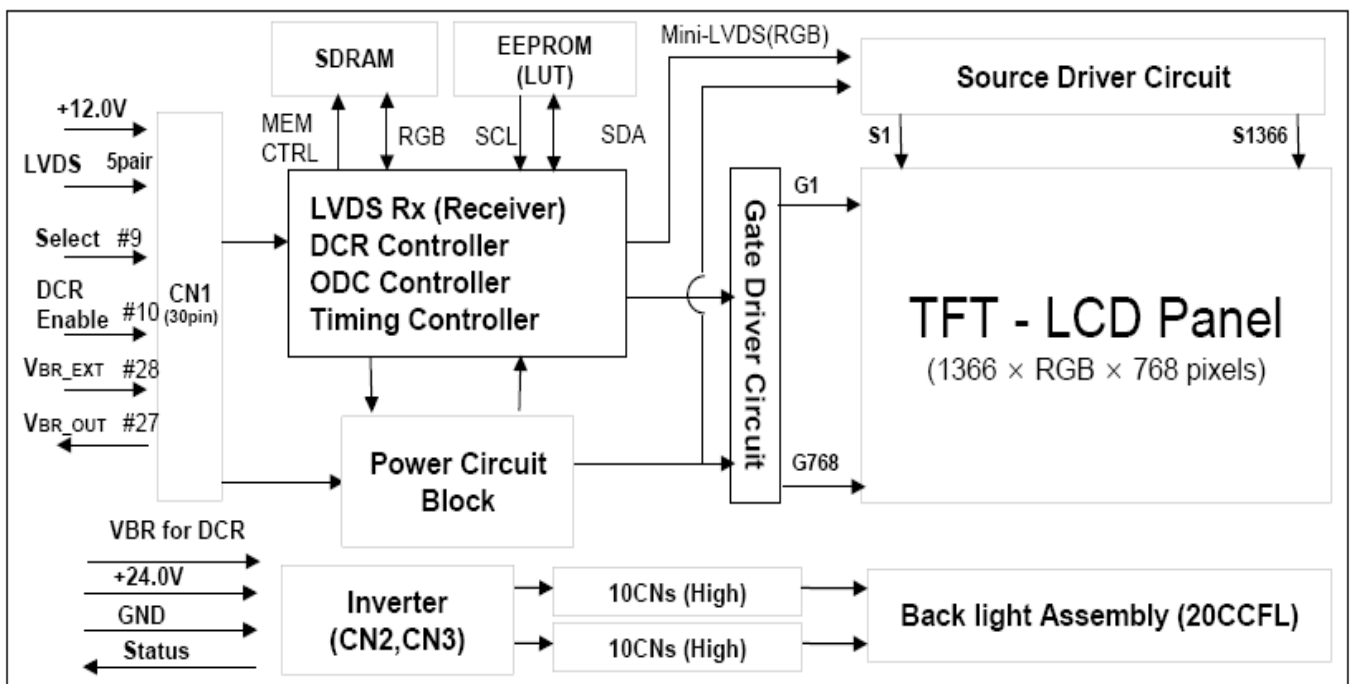
resolution (768 vertical by 1366 horizontal pixel array).

Each pixel is divided into Red, Green and Blue sub-pixels or dots which are arranged in vertical stripes.

Gray scale or the luminance of the sub-pixel color is determined with a 8-bit gray scale signal for each dot, thus presenting a palette of more than 16.7M(true) colors.

It has been designed to apply the 8-bit 1-port LVDS interface.

It is intended to support LCD TV, PCTV where high brightness, super wide viewing angle, high color gamut, high color depth and fast response time are important.



3-2 General Features

LCD TV Service Manual

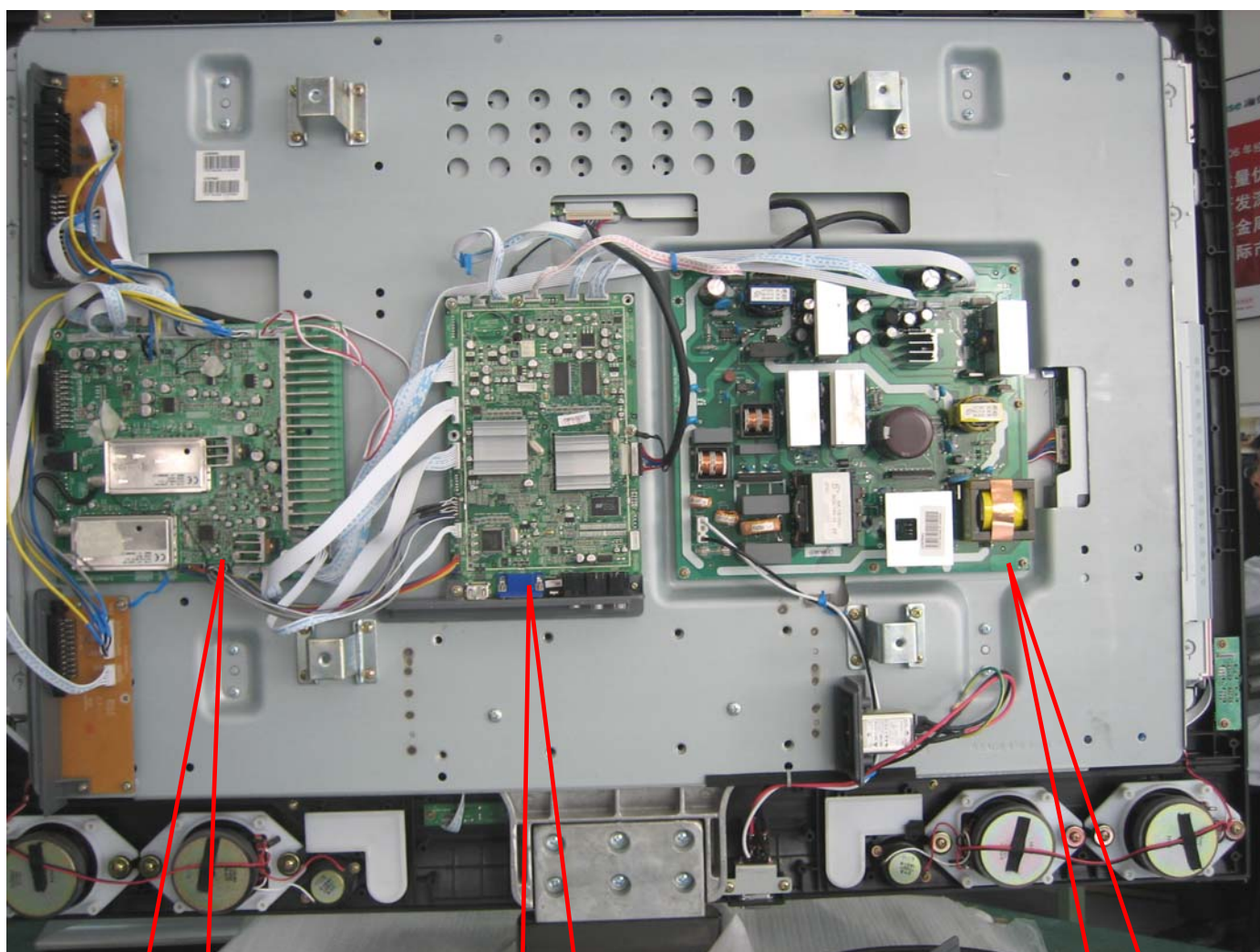
Active Screen Size	37.02 inches(940.3mm) diagonal
Outline Dimension	877.0mm(H) x 516.8mm(V) x 55.5mm(D) (Typ.)
Pixel Pitch	0.200mm x 0.600mm x RGB
Pixel Format	1366 horiz. by 768 vert. pixels RGB stripe arrangement
Color Depth	8-bit, 16.7 M colors
Luminance, White	500 cd/m ² (Center 1 point Typ.)
Viewing Angle (CR>10)	Viewing angle free (R/L 178(Typ.), U/D 178(Typ.))
Power Consumption	Total 126Watt (Typ.) (Logic=5.6W, B/L=120W [$I_{LAMP}=100mA$])
Weight	10,500g (Typ.)
Display Operating Mode	Transmissive mode, normally black
Surface Treatment	Hard coating(3H), Anti-glare treatment of the front polarizer

Active Screen Size	42.02 inches(1067.308mm) diagonal
Outline Dimension	1006 mm(H) x 610 mm(V) x 56 mm(D) (Typ.)
Pixel Pitch	0.227mm x 0.681mm x RGB
Pixel Format	1366 horiz. by 768 vert. Pixels RGB stripe arrangement
Color Depth	8-bit, 16.7 M colors
Luminance, White	500 cd/m ² (Center 1-point) (Typ.)
Viewing Angle (CR>10)	Viewing Angle Free (R/L 178 (Typ.), U/D 178 (Typ))
Power Consumption	Total 167.34W (Typ.) (Logic=5.34W, Inverter=162W [$I_{BL}=6.5mA$])
Weight	14.5Kg (Typ.)
Display Operating Mode	Transmissive mode, Normally black
Surface Treatment	Hard coating(3H), Anti-glare treatment of the front polarizer

4. Block Diagram

4-1 Chassis Block Diagram

LCD TV Service Manual



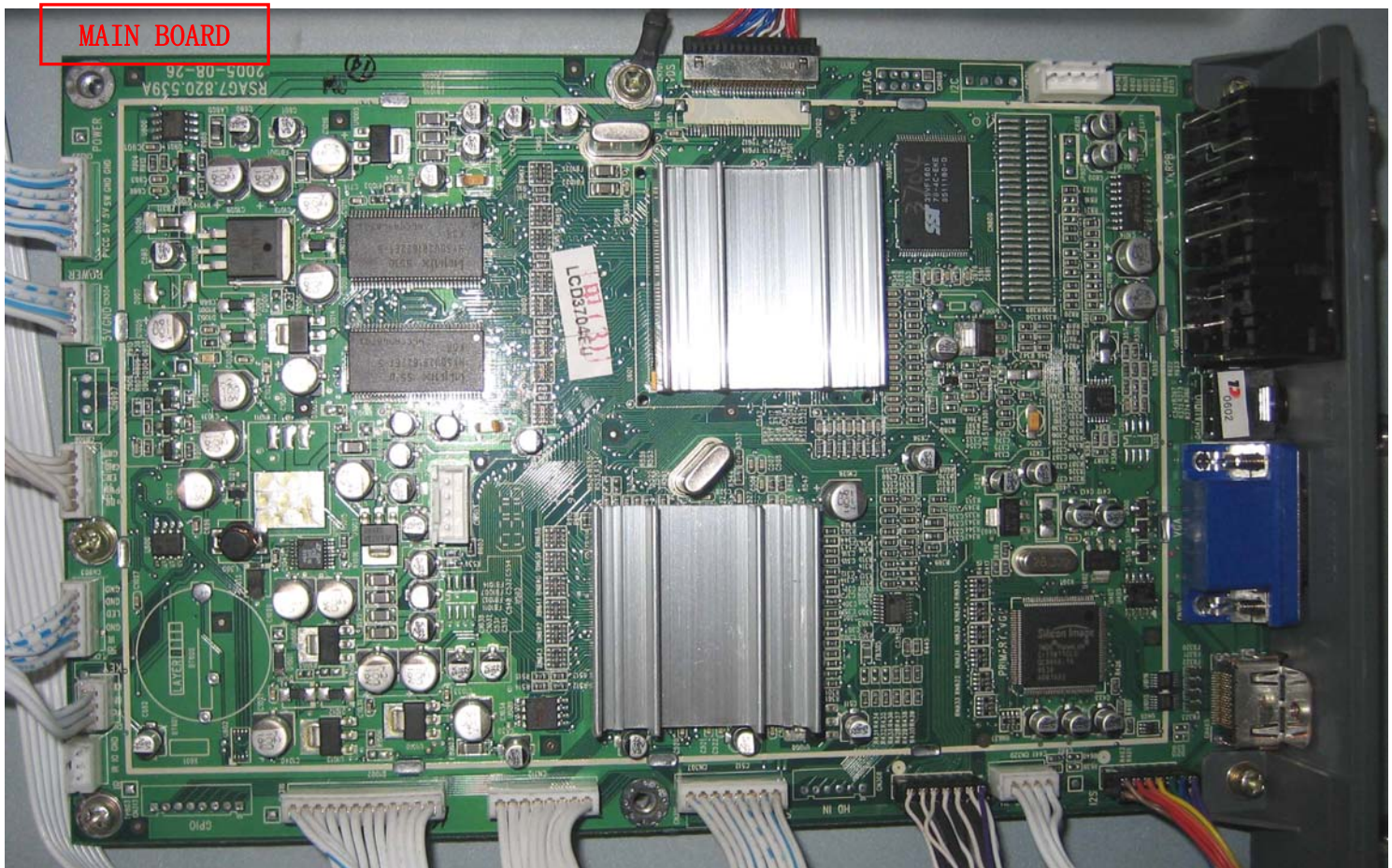
TUNNER BOARD

MAIN BOARD

POWER BOARD

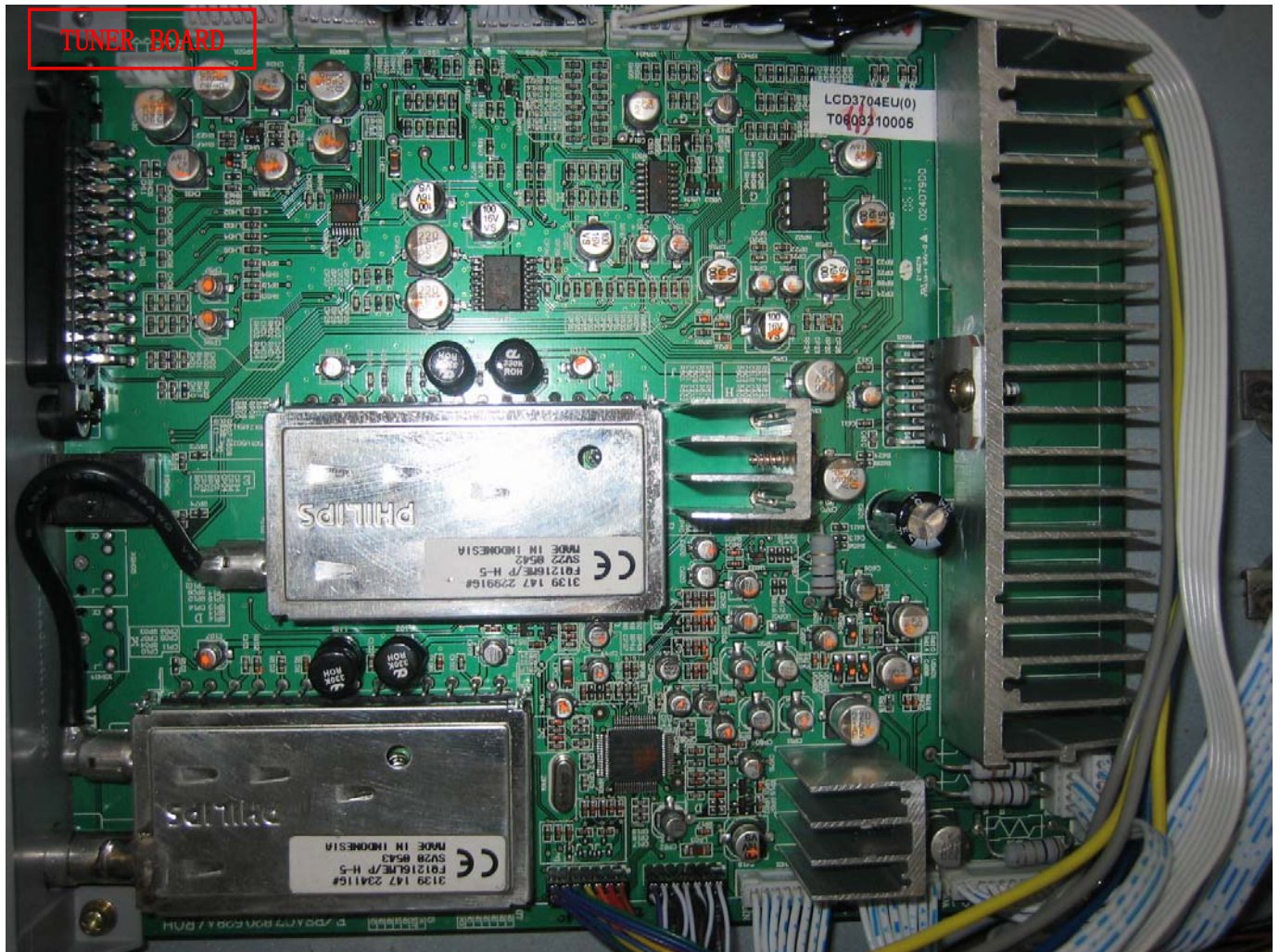
Hisense Confidential

LCD TV Service Manual



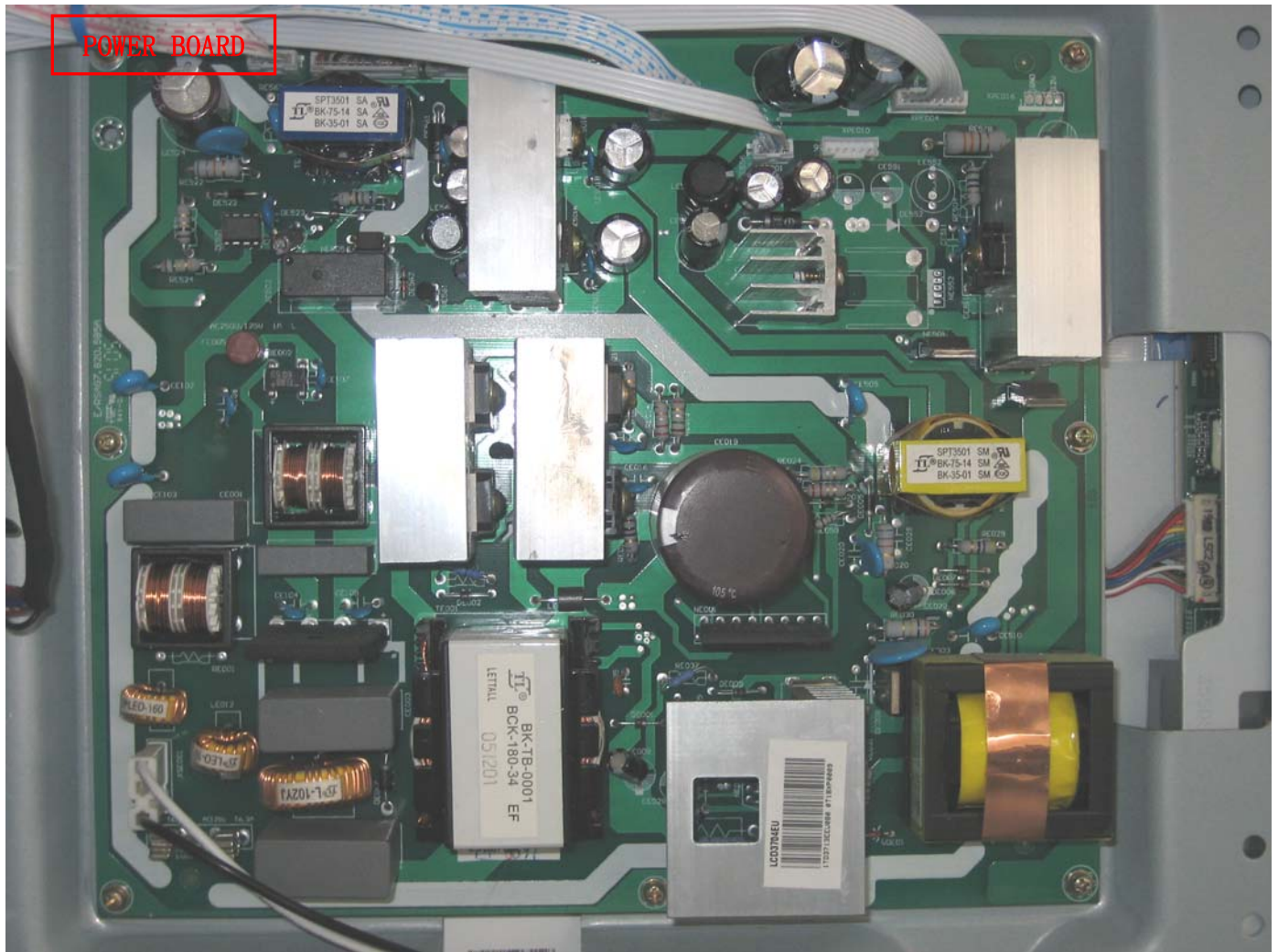
Hisense Confidential

LCD TV Service Manual



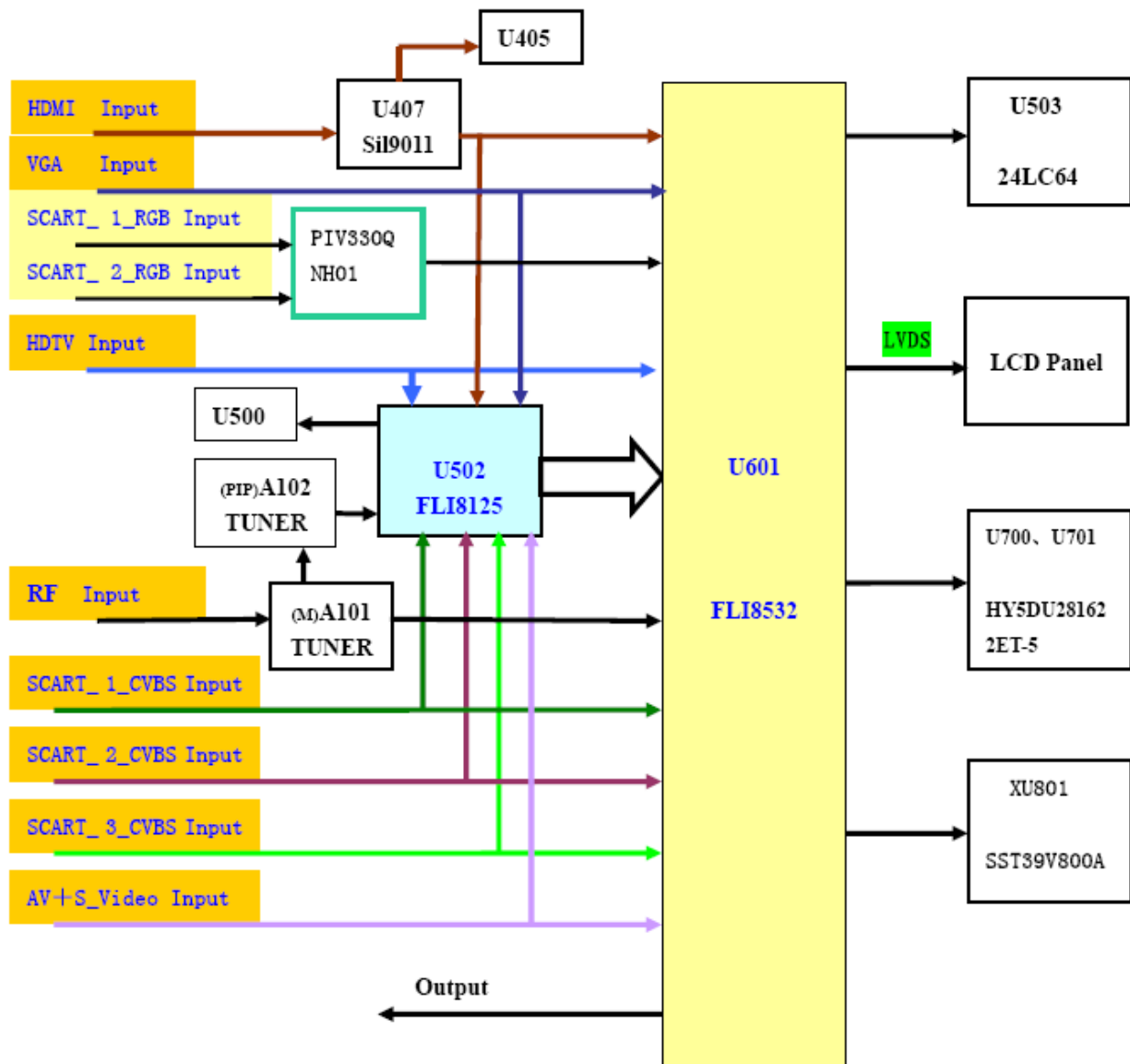
Hisense Confidential

LCD TV Service Manual

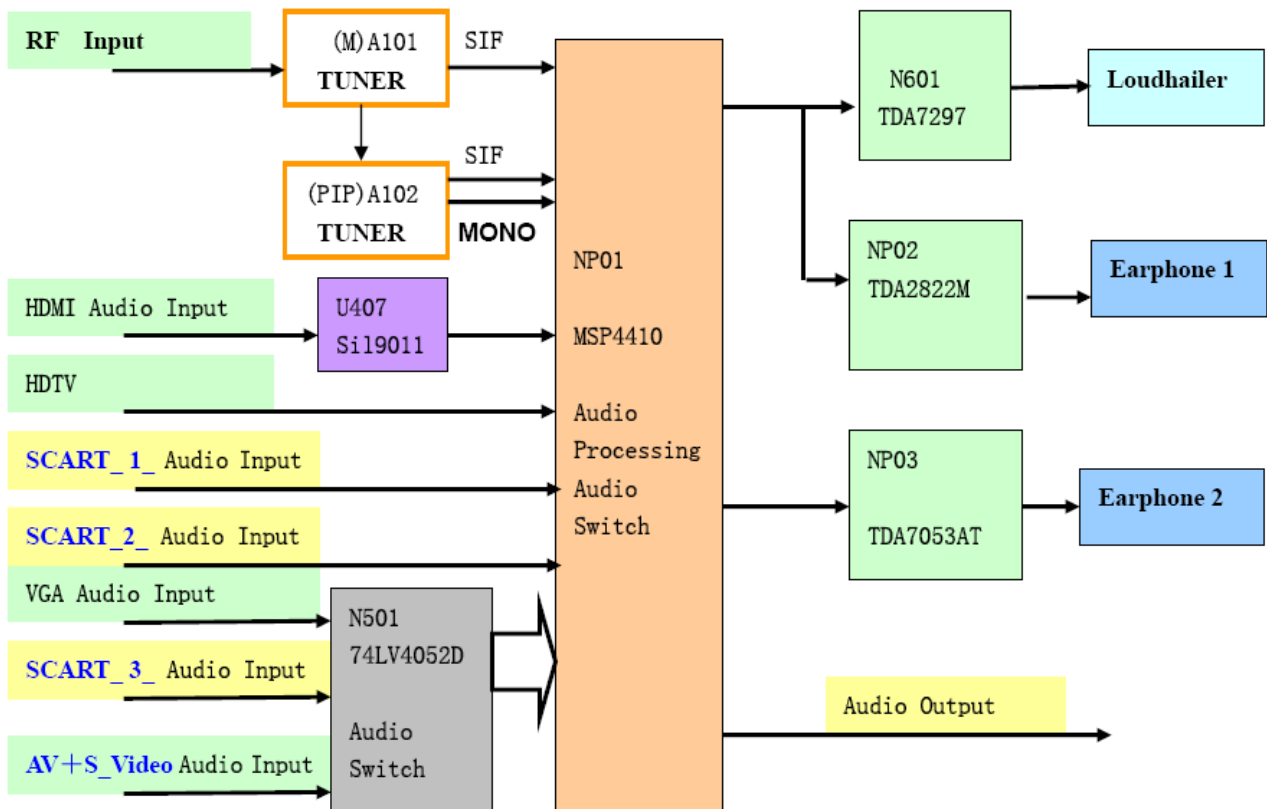


4-2 Video Processing Part

Hisense Confidential



4-3 Audio Processing Part



5. Service Mode And Adjustment

5-1 Service Mode

Use the remote control, first open MAIN MENU with MENU button, and choose AUDIO SETTING with the CHANNEL UP/DOWN button, then choose the BALANCE with VOLUME UP/DOWN, In this condition, press 0、5、3、2, you can enter factory menu.

5-1-1、Fac. Menu

1、White Balance:

NO.	NAME	DEFAULT	Alternative value	Remarks
1	RDRV	220		Adjustment white balance use
2	GDRV	220		Adjustment white balance use

LCD TV Service Manual

3	BDRV	220		Adjustment white balance use
4	Bright	0		No use
5	Contrast	145		No use
6	Color	50		No use

2、Factory Init

Set Channel

Clear Rom(It is best not to use)

3、Options:

NO.	NAME	DEFAULT	ALTERNATIVE VALUE	REMARKS
1	To Factory	1	0	
2	Key PadEn	1		No use

4、auto color:

NO.	NAME	ALTERNATIVE VALUE	REMARKS
1	ADC Graphics	auto calibration	VGA
2	ADC CVBS	auto calibration	AV
3	ADC scart RGB	auto calibration	SCART RGB
4	ADC -S-video	auto calibration	S-video
5	ADC compl	Calibrating ADC	

5-1-2、Design Menu

1、Picture Setting:

NO.	NAME	ALTERNATIVE VALUE	REMARKS	NO.	NAME	ALTERNATIVE VALUE	REMARKS
1	BriB	85	brightness	7	ColN	70	standard
2	ConB	65	brightness	8	ShoN	0	No use
3	ColB	75	brightness	9	BriS	75	softness
4	ShoB	0	No use	10	ConS	50	softness
5	BriN	80	standard	11	ColS	60	softness
6	ConN	55	standard	12	ShoS	0	No use

2、Sound Setting

3、Sound Options:

NO.	NAME	NAME	ALTERNATIVE VALUE	REMARKS
1	Devitation	HDEV option	1	
		FMAM Devitation	100	
		Carry mute	0	
2	Prescale	Scart prescale	100	Voice (except TV、HDMI)

Hisense Confidential

LCD TV Service Manual

		I ² s prescale	100	HDMI Voice adjustment
		SIF prescale	0	No use,
3	MAX volume	—	110	
4	MIN volume	—	45	
5	volume 20	—	80	
6	Mid volume	—	98	
7	HDMI option		0	No use,

4、PWM Conttol

NO.	NAME	DEFAULT	ALTERNATIVE VALUE	REMARKS
1	PWM Normal	1		
2	PWM mode 1	100		
3	PWM mode 2	255		
4	Pwm period	140		Do not use

5、PIP Options:

NO.	NAME	DEFAULT	ALTERNATIVE VALUE	REMARKS
1	PIP size	16:9	4: 3	

6、EMI:

NO.	NAME	DEFAULT	ALTERNATIVE VALUE	REMARKS
1	EMI	0		Do not use

7、VDSP:

NO.	NAME	DEFAULT	ALTERNATIVE VALUE	REMARKS
1	Gamma	ON	2. 2	No use, Do not use
2	ChromaBugReduction	ON		No use, Do not use
3	LCD Overdrive	OFF		No use, Do not use
4	ACM saturation	red	0	No use, Do not use
		green	0	No use, Do not use
		blue	0	No use, Do not use
		yellow	0	No use, Do not use
		magen	0	No use, Do not use
		cyan	0	No use, Do not use
5	ACM hue	red	0	No use, Do not use
		green	0	No use, Do not use
		blue	0	No use, Do not use
		yellow	0	No use, Do not use
		magen	0	No use, Do not use
		cyan	0	No use, Do not use

8、Debug

LCD TV Service Manual

NO.	NAME	DEFAULT	ALTERNATIVE VALUE	REMARKS
1	adress	0×8		Do not use
2	value	0×		Do not use
3	action			Do not use
4	custom	ON		

9、Hardware Info

panel LC370WX1

tuner PHILIPS FQ1216LME

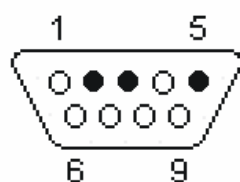
flash sst39vf1601*48s

LCD3704EU_r2.00.2006.03.24

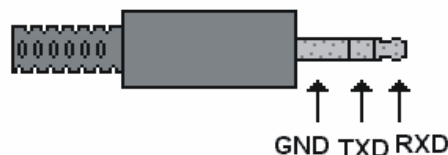
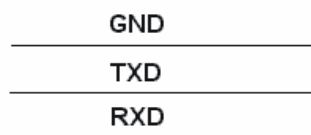
6. Software Updating

6-1、Updating Cable

– You can update our LCD’ s software through a special RS232 cable(show as below)



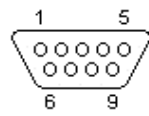
9 PIN D-SUB FEMALE



3.5mm Stereo Earphone plug

– This RS232 cable includes a 9 PIN D-SUB FEMALE, a 3.5mm Stereo Earphone plug and 3 wires Built the cable as show

Serial (PC 9)



(At the Computer)

9 PIN D-SUB MALE at the Computer.

Pin	Name	Dir	Description
1	CD	←	Carrier Detect
2	RXD	←	Receive Data
3	TXD	→	Transmit Data
4	DTR	→	Data Terminal Ready
5	GND	—	System Ground
6	DSR	←	Data Set Ready
7	RTS	→	Request to Send
8	CTS	←	Clear to Send
9	RI	←	Ring Indicator

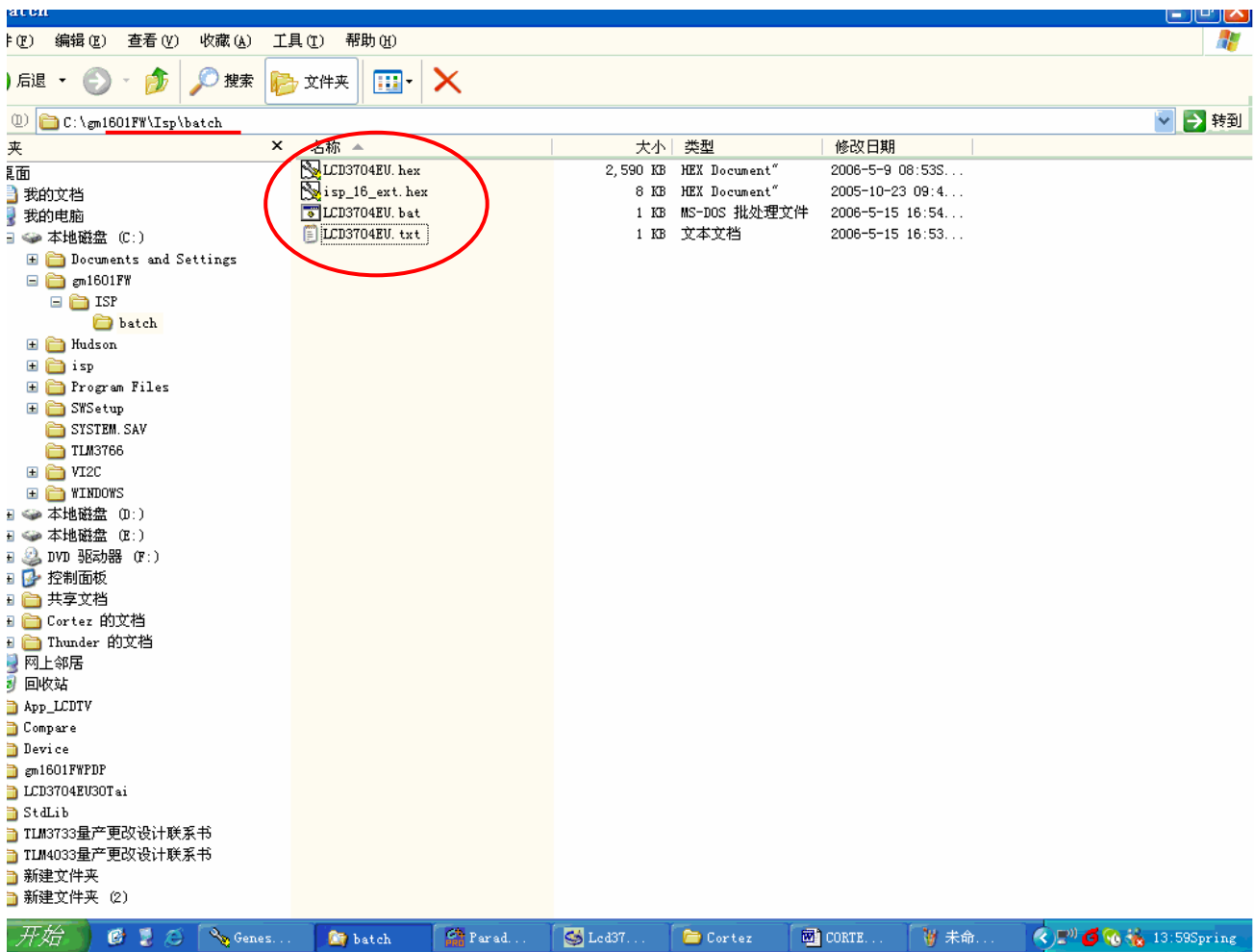
6-2、LCD3704EU Software Updating

First pls turn off the TV, then plug one end of the serial cable to the COM port of PC and other end to RS232 port of TV.

6-2-1、CORTEZ Chassis Updating Operation

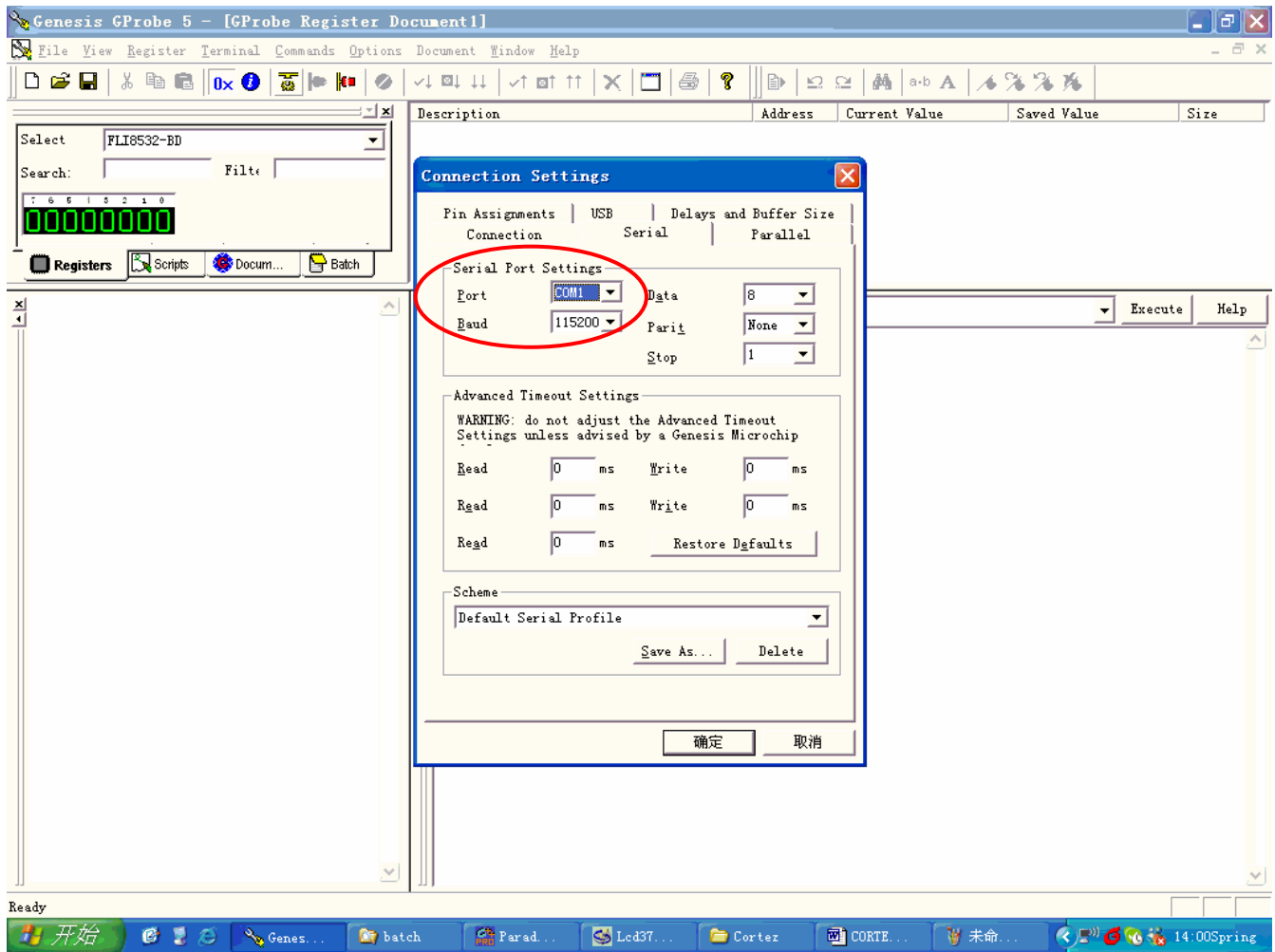
1、 Before the updating , updating the documents which needs:isp_16_ext.hex document, LCD3704EU.txt document, LCD3704EU.bat document, LCD3704EU.hex document duplicates to C:\Gm1601FW\ISP\ batch folder.

LCD TV Service Manual



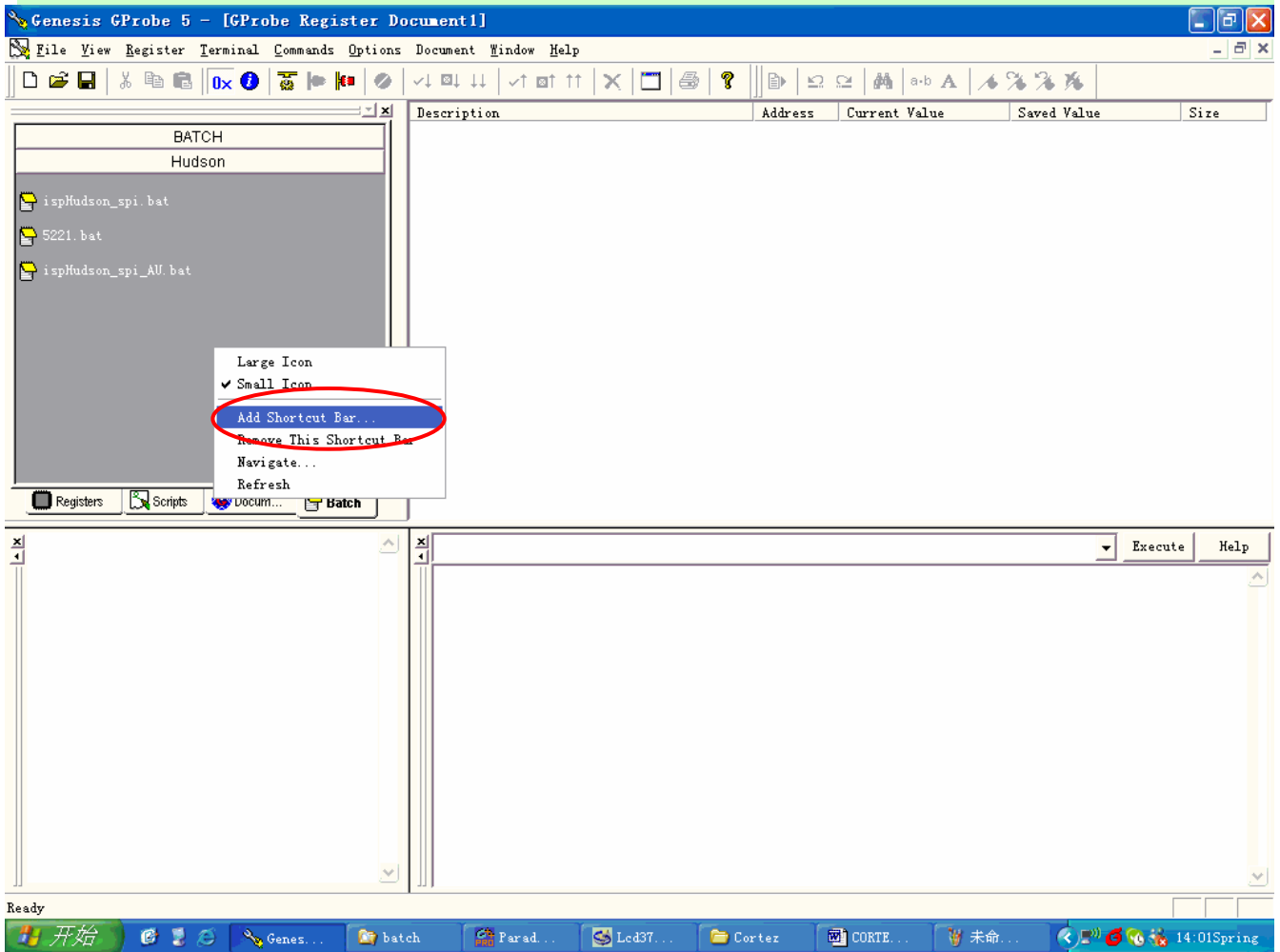
2、Double-clicks tabletop update software quick way **G-Probe**, enters the software update contact surface, establishes the good **COM** port, Speed set up 115200.

LCD TV Service Manual

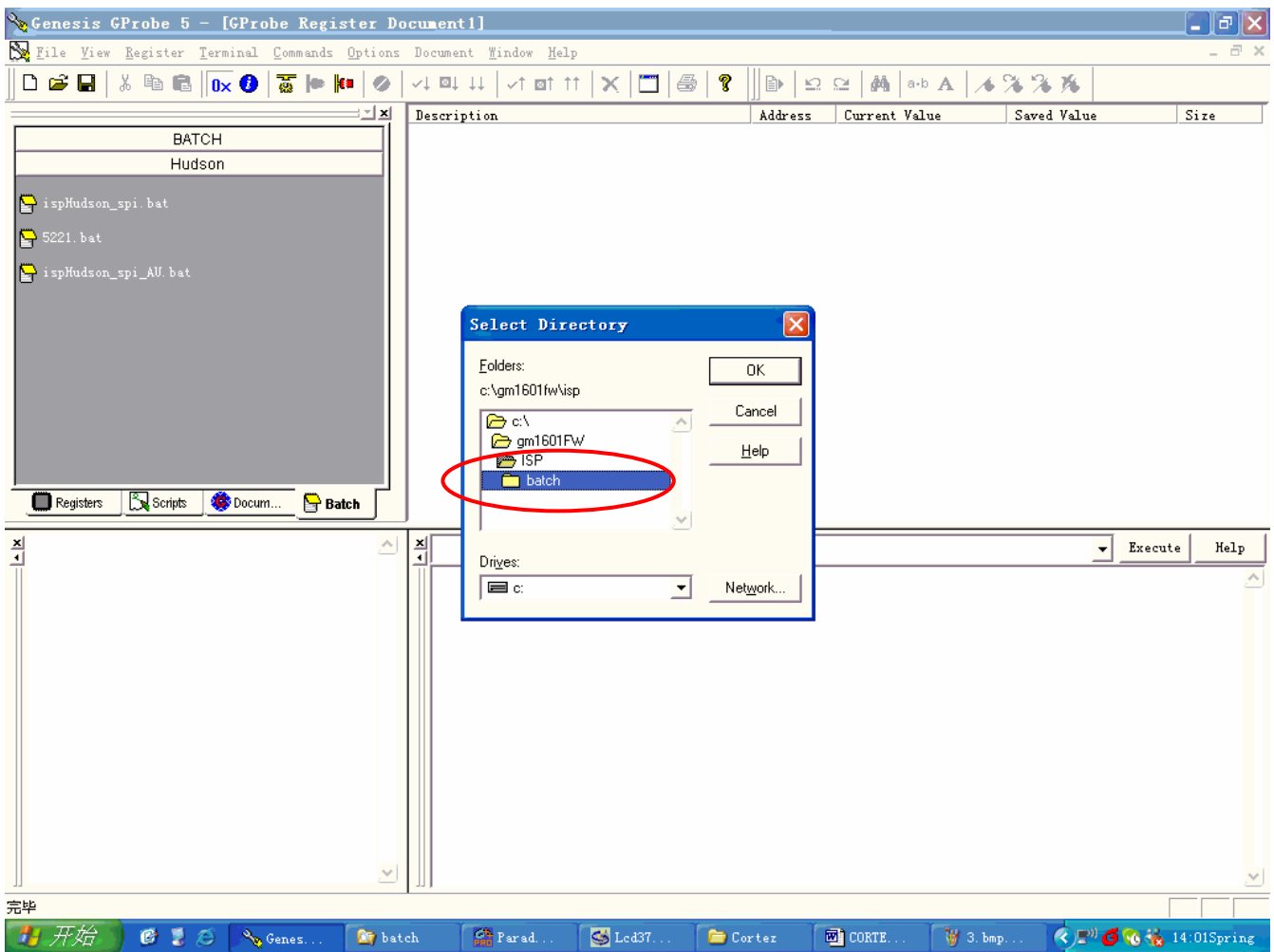


3、Clicks on the mouse right key in the promotion contact surface
G-Probe upper left Batch fence blank to move Add shortcut Bar...Chooses
C:\Gm1601FW\ISP\ batch Under way LCD3704EU.Bat document.

LCD TV Service Manual

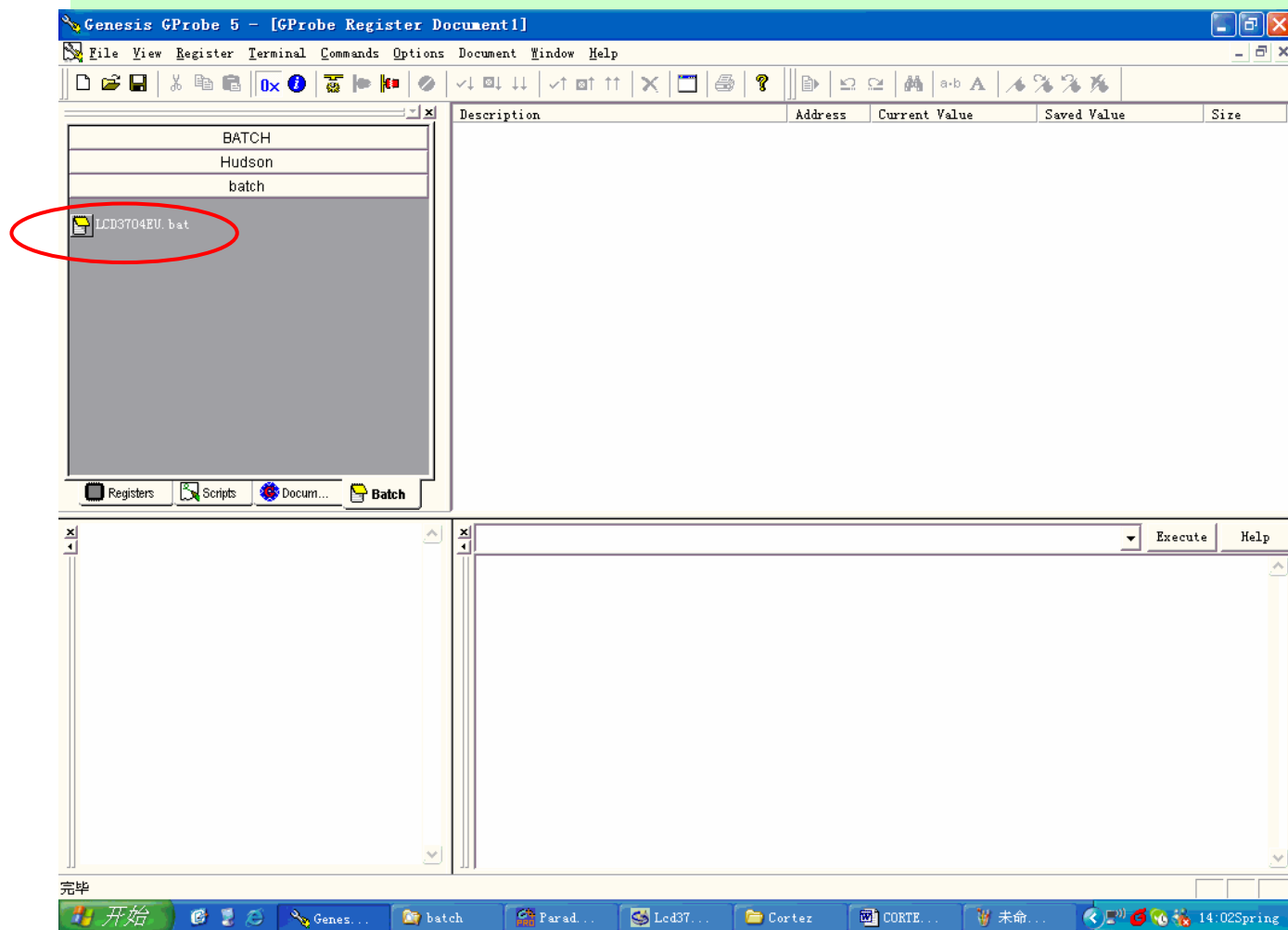


LCD TV Service Manual

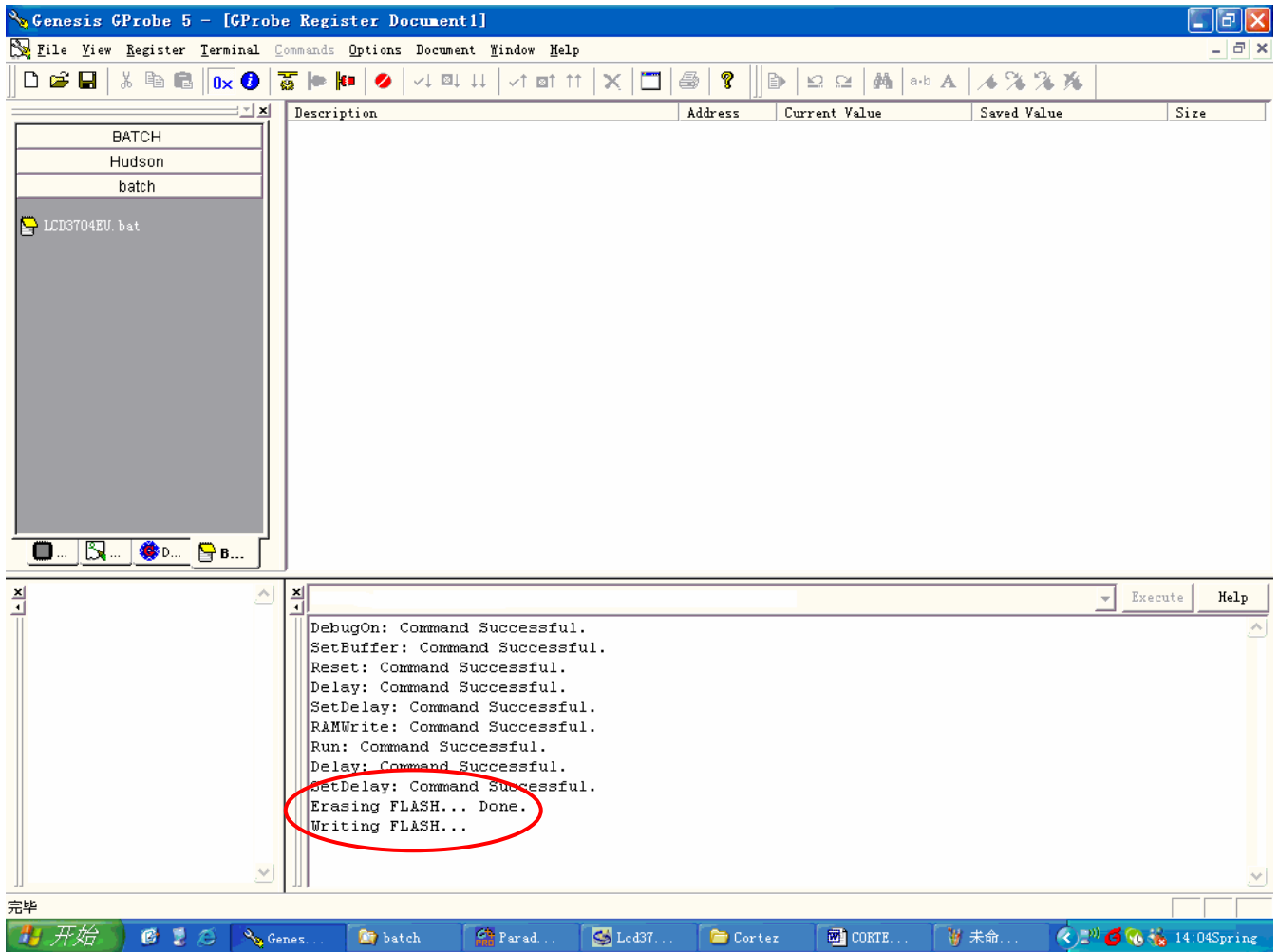


4、Clicks on in the Batch fence **LCD3704EU.dat** document updating starts, at the same time the screen demonstrates **Erasing Flash..** (Clear spatial Flash), **Writing Flash..** (Procedure reads in) until demonstrated **EXCUTION TIMES** is the updating finished. (About demonstration updating time 88s);

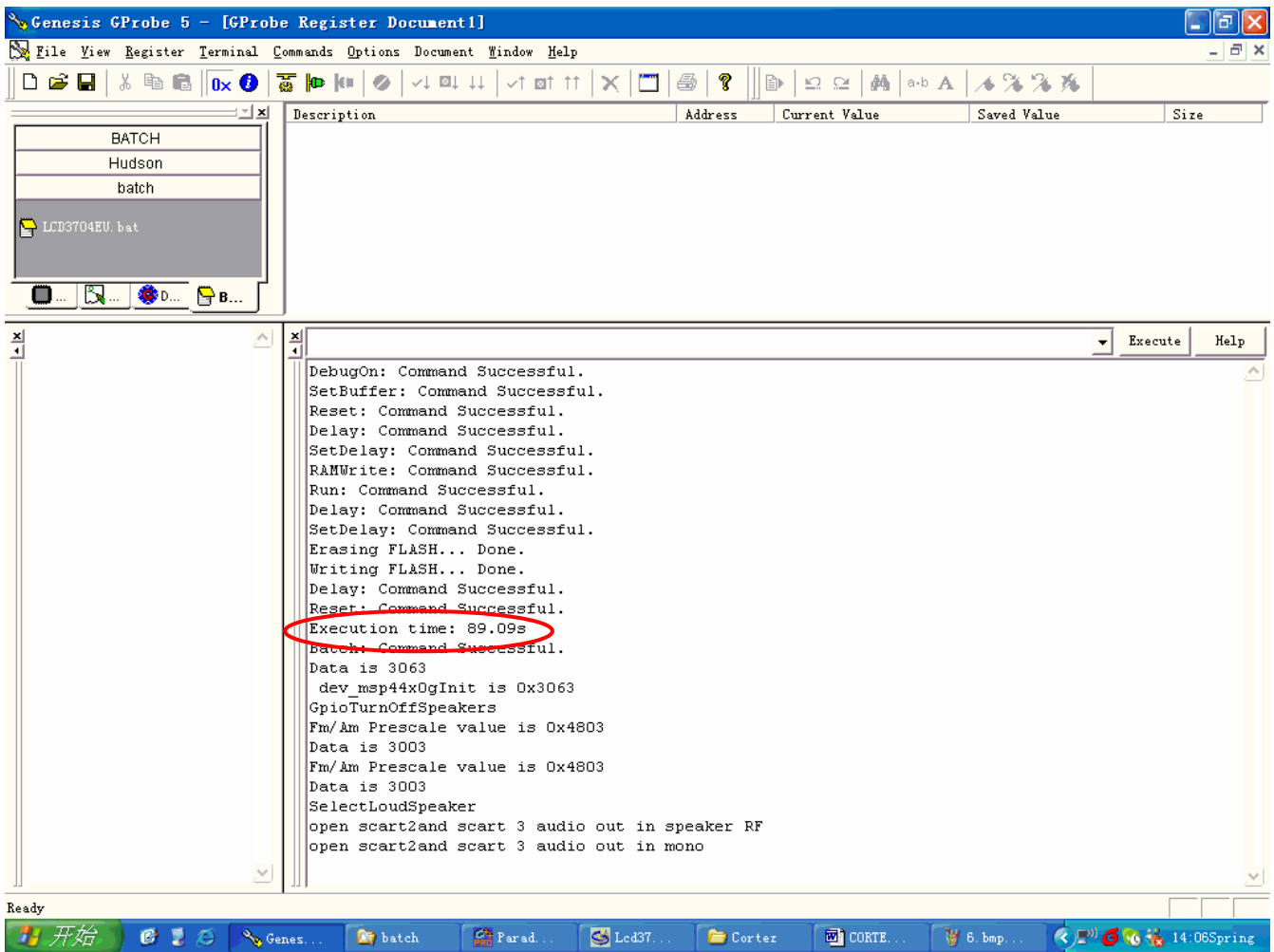
LCD TV Service Manual



LCD TV Service Manual

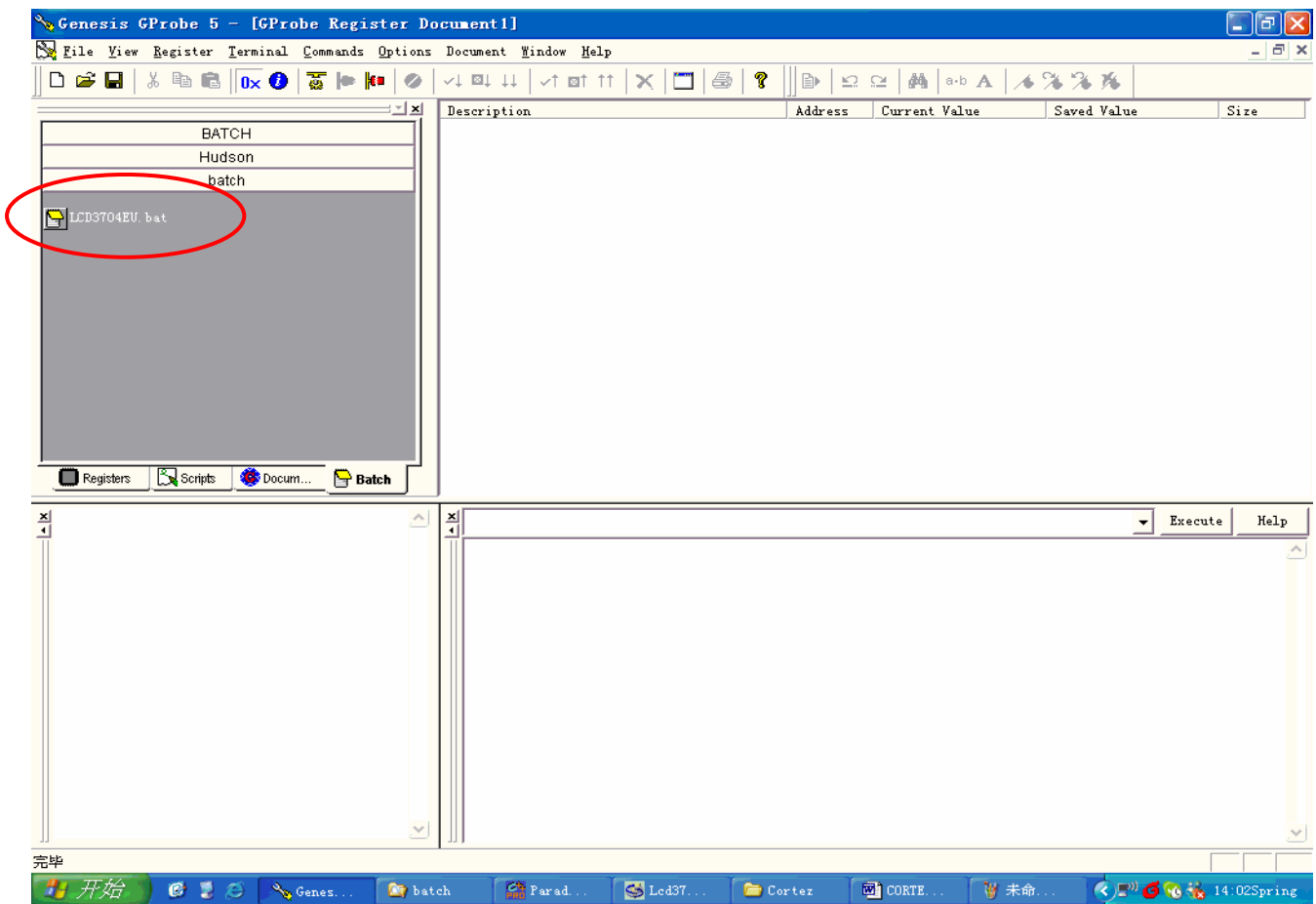


LCD TV Service Manual



5、On the entire machine exchange power failure again electricity, then enters the factory menu confirmation software edition number again through the factory remote control is whether correct;

LCD TV Service Manual



6、The next updating clicks on in directly the Batch fence LCD3704EU.dat document then.

2、Software Updating Operation notice

1、Uses the HEX filename in view of the different updating, in copy to "C:\Gm1601FW\ISP\Batch\" Under when table of contents, must with XXXX.txt document requests the filename is same.

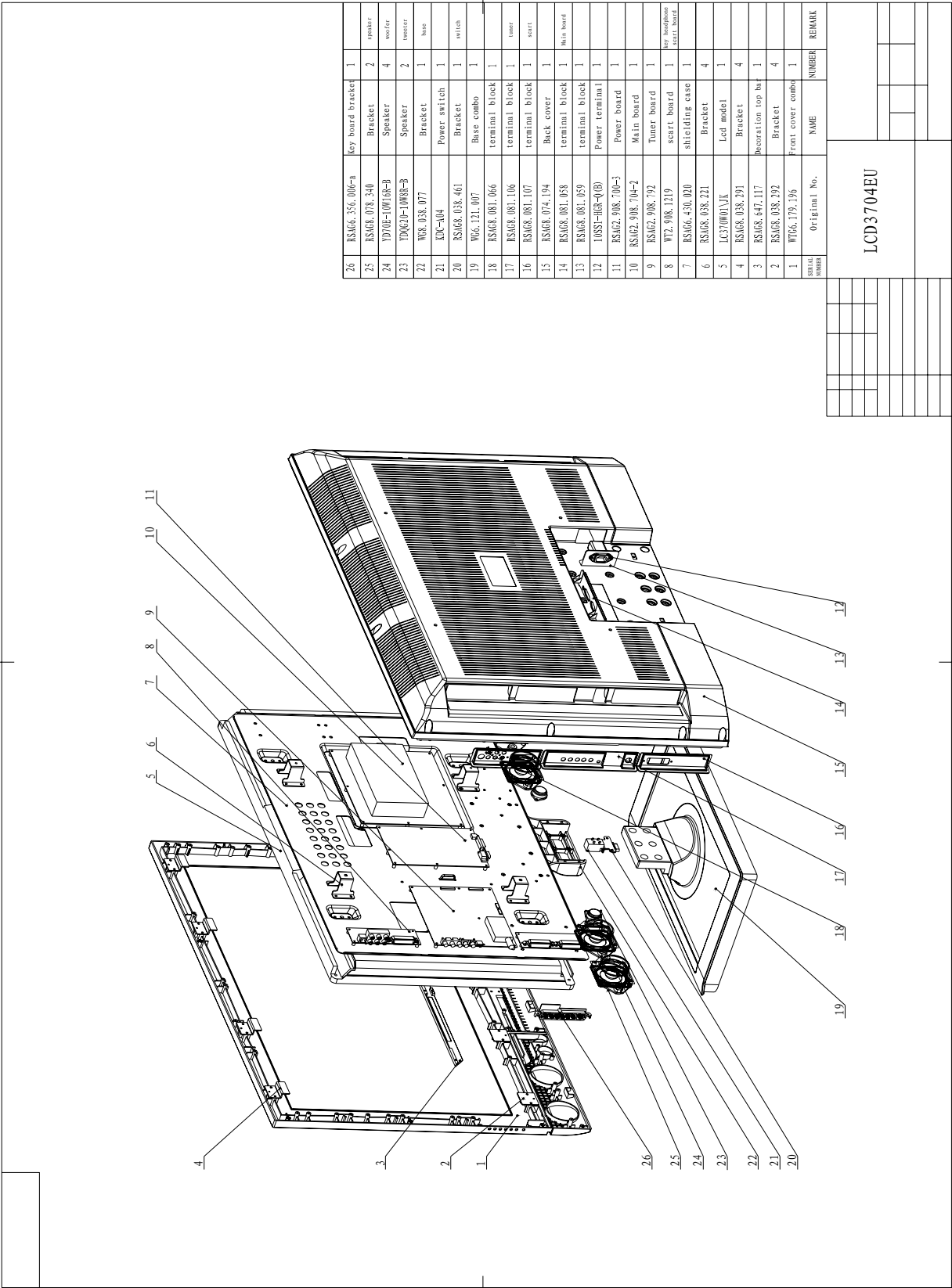
2、When is unable the updating, on again electricity, in Gprobe: > After enters the order "debugon", presses the Enter key. Appears Gprobe: > After, the explanation serial circuit is normal.

3、After the entire machine on electricity and confirmed in the updating contact surface left bottom frame examines the content to stop only then carrying on the promotion operation.

Caution: Pls do not hot plug the serial cable.

7. LCD3704EU Explode View And Bom

LCD TV Service Manual



LCD3704EU			

A 10x10 grid with a 2x2 block of cells in the top-left corner shaded gray.

8. Spare Parts List

NAME	PART NUMBER	SAP NO.	REMARK
Main Board	RSAG2.908.704-2	109099	
Tunner Board	RSAG2.908.792	109052	
Power Board	RSAG2.908.700-3	109059	
Carton BOX	E/RSR8.865.2108	1032234	
Front Cover	WTG6.179.196	108343	
Back Cover	RSAG8.074.194	1023589	
Remote Cotrol	EN-21606A	1032243	
Pedestal Groupware	WG6.121.007	1031387	
Lcd Panel (LGL)	LC370WX1-SL01	1030460	
Power Wire	PHP-206+PHS-301	1004693	

9. Troubleshooting

No.	Trouble	Measure
1	Turn on the TV, The LED is red, no display on screen	- Pls replace the main board or updating the software. (it ' s the software is wrong)
2	Turn on the TV, The LED is blue, but no picture or/and no sound	you should to replace the main board or/and tuner board
3	In TV state, can not to tuning	you should to replace the tuner board

LCD TV Service Manual

4	No teletext	You should to replace the tuner board(the teletext IC bad)
5	No sound	You should to replace the tuner board
6	can not to updating software	You should to replace the main board
7	No reaction with PC	You should change the main board

10. Circuit Diagram

Cortez + Hudson RD2 Reference Board Design
FLI8532 Cortez and FLI8125 Hudson

CONTENTS


SCHEMATIC Name	SHEET
01. Contents, Revision History	1
02. Top Level	2
03. Inputs	3
04. HDMI I/F	4
05. FLI8125 Hudson	5
06. FLI8532 Cortez	6
07. Frame Store	7
08. CORTEZ Memory I/F	8
09. Outputs	9
10. Power	10

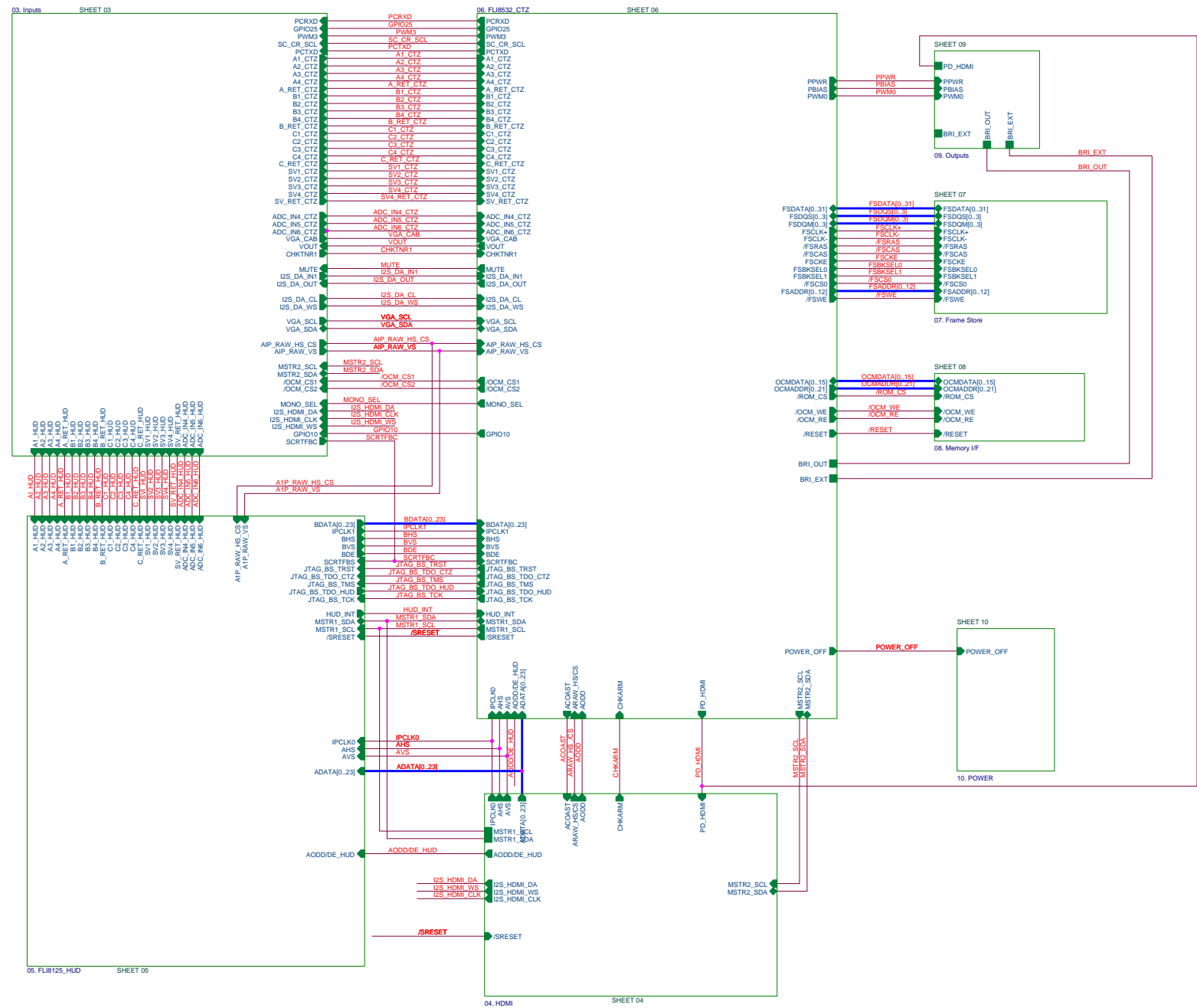
REVISION HISTORY

Date	Author	Ver	Comments
June 2004	Abdul Aziz	1	Draft Release PCB# 400-243 Rev 1
Aug 9, 2004	Max Tang	2	PCB# 400-243 Rev 2 Added jumpers to select b/w NTSC/SCART input modules; Added option to connect FSEL from SCART3 connector; Added switches for reducing stubs from external DIP connector, Fixed Hudson Pin-out errors and IROM bootstrap, Added jumper option for new keypad interface, Changed U1011 regulator to LDO, Hudson Bootstrap
Aug 9, 2004	Max Tang	3	PCB# 400-243 Rev 3 Add more Option for AFE signal.

Approval	Position	Signature	Date
Abdul Aziz	Genesis		
Waqar Hyder	Genesis		

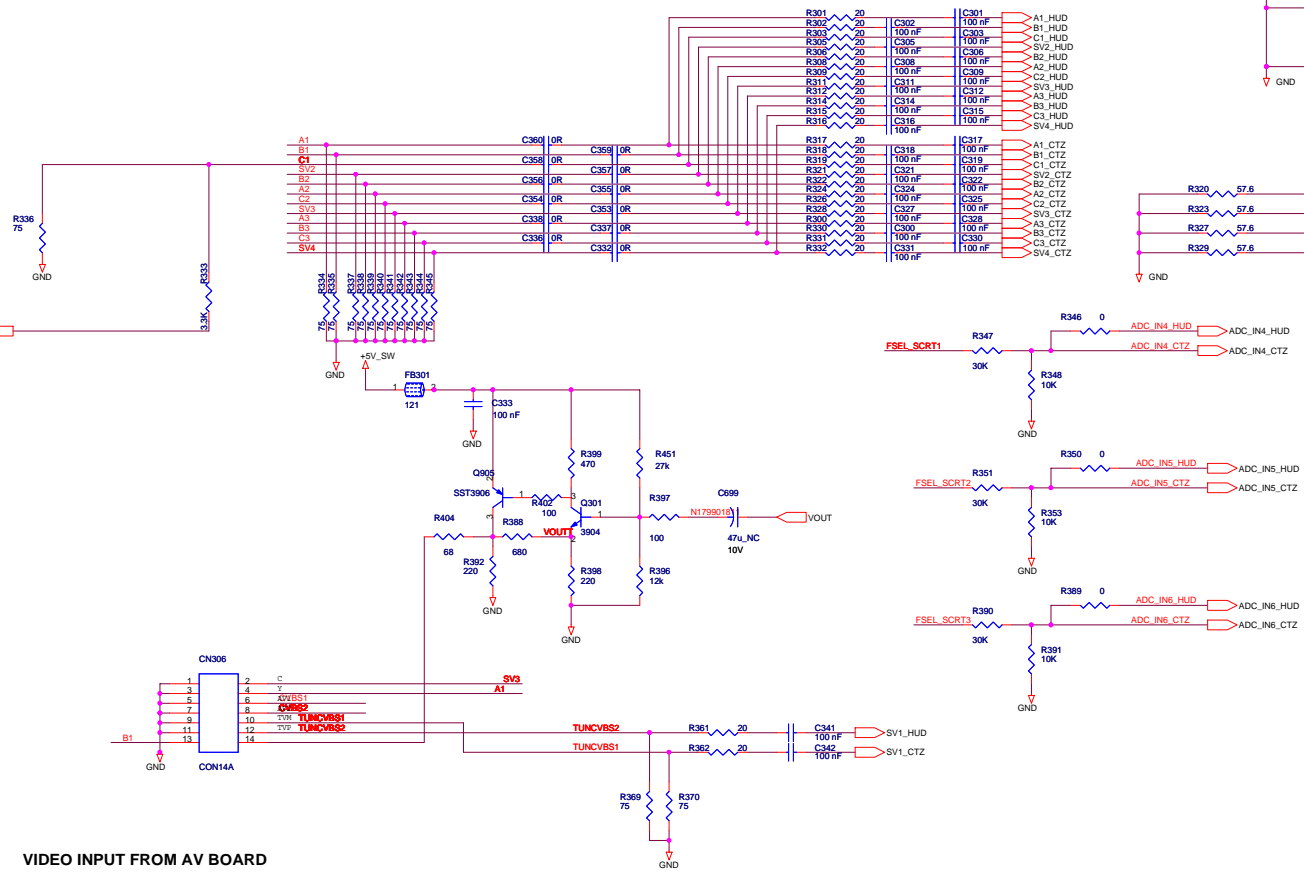
<Variant Name>

			Genesis Microchip Inc.		
			Title 01. Contents		
Size B		Document Number B0253-SCH-01			Rev 3
Date:		Wednesday, October 19, 2005		Sheet	1 of 10

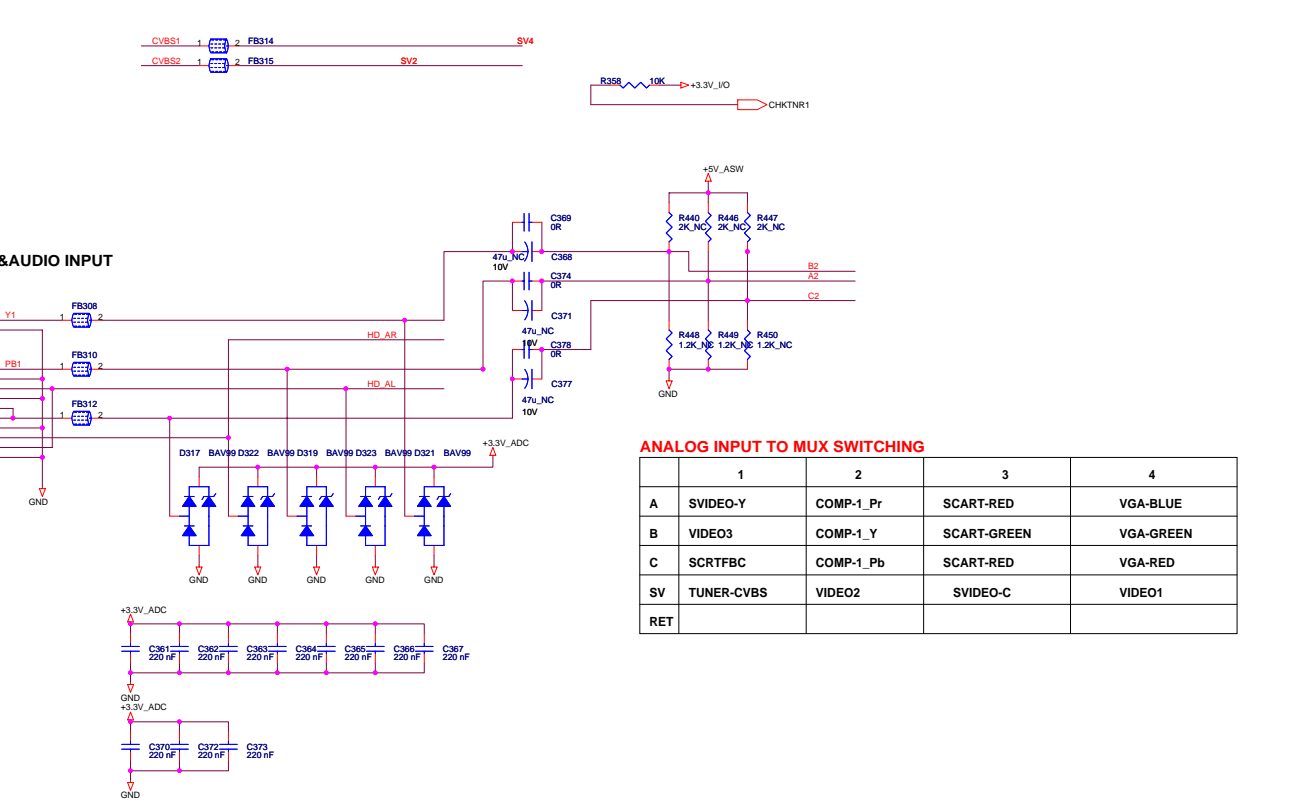


<Variant Name>

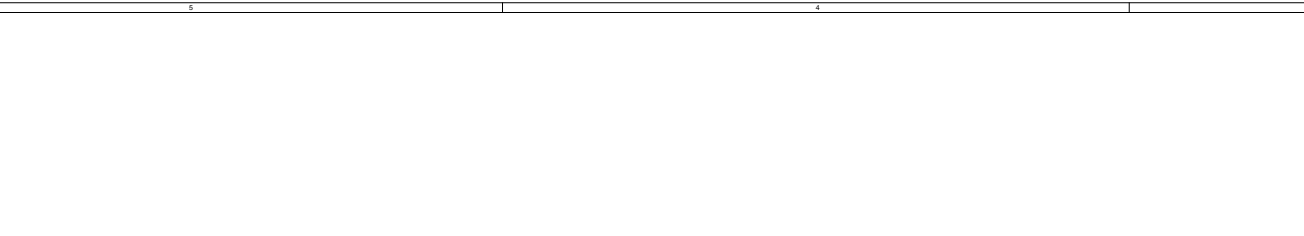
ANALOG VIDEO INPUT



VIDEO INPUT FROM AV BOARD



HD&AUDIO INPUT

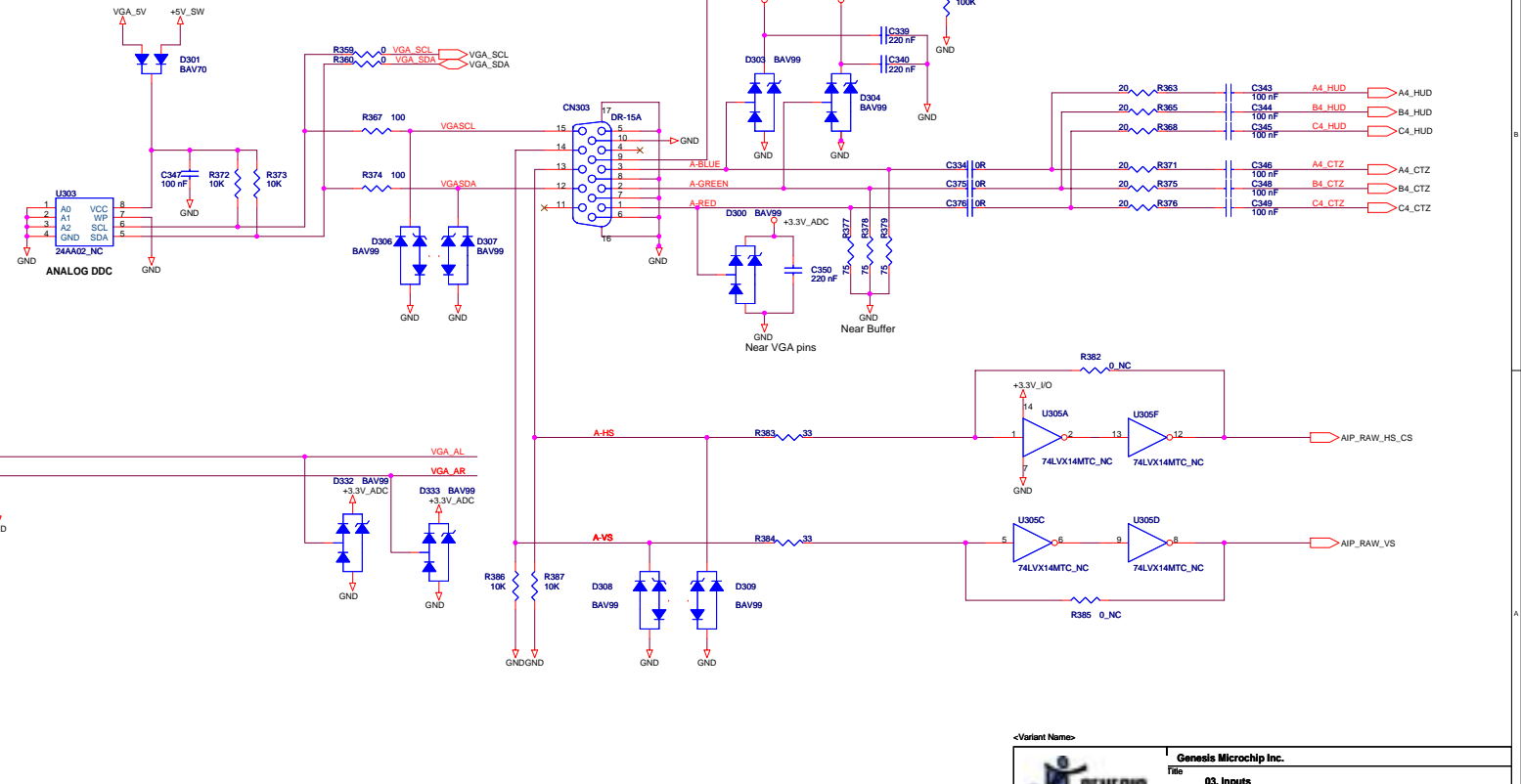


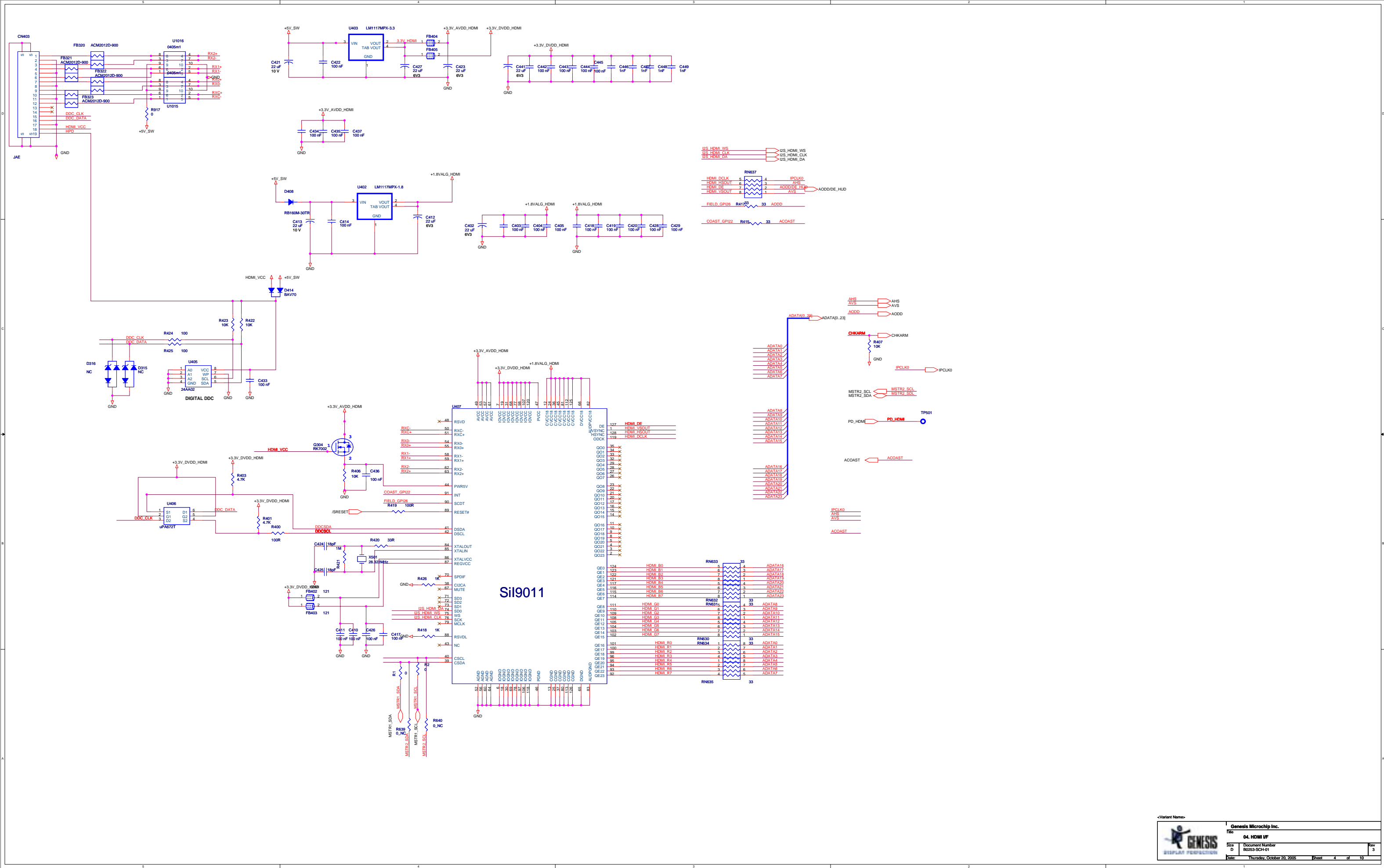
ANALOG INPUT TO MUX SWITCHING

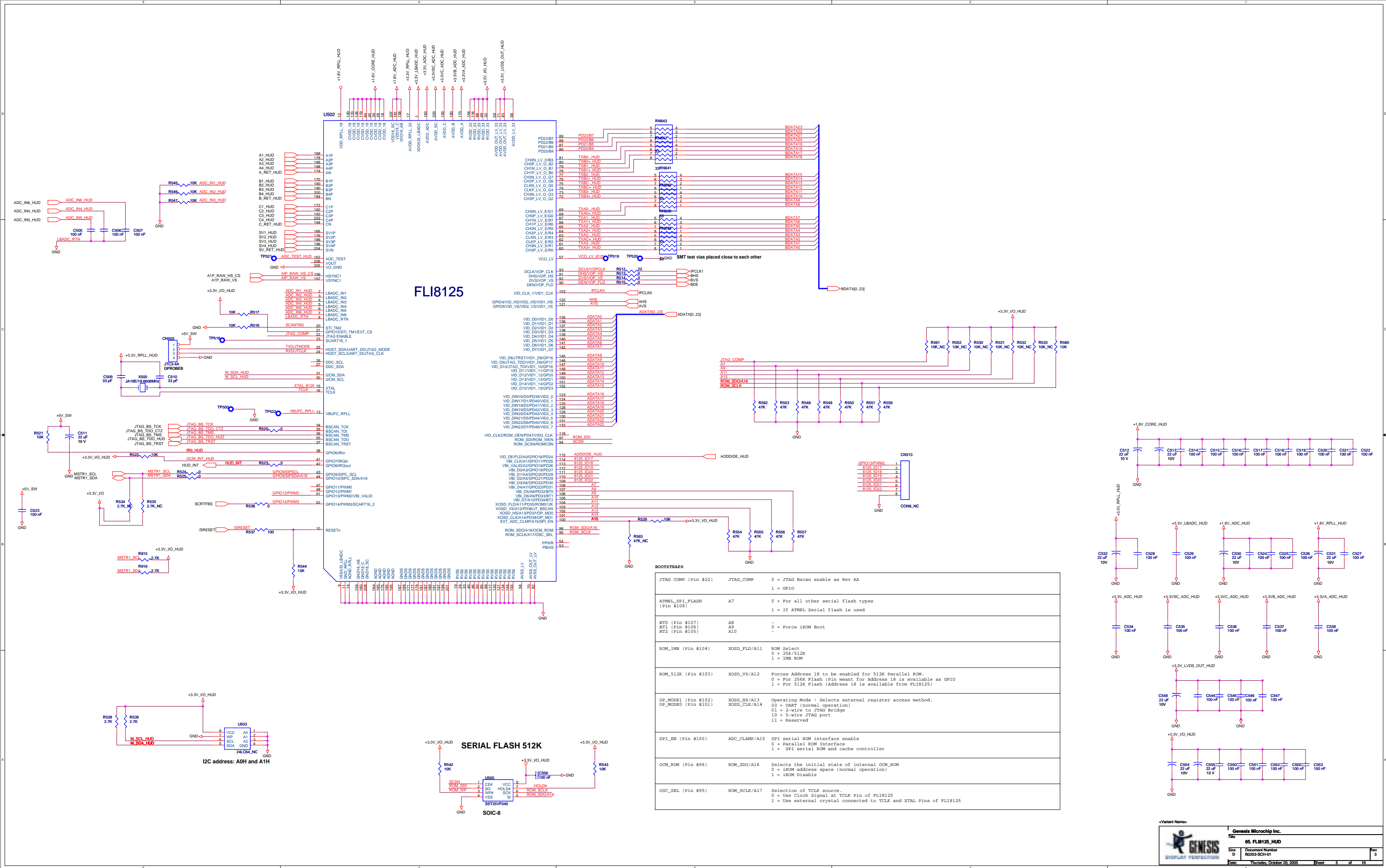
	1	2	3	4
A	SVIDEO-Y	COMP-1_Pr	SCART-RED	VGA-BLUE
B	VIDEO3	COMP-1_Y	SCART-GREEN	VGA-GREEN
C	SCRTFBC	COMP-1_Pb	SCART-RED	VGA-RED
SV	TUNER-CVBS	VIDEO2	SVIDEO-C	VIDEO1
RET				

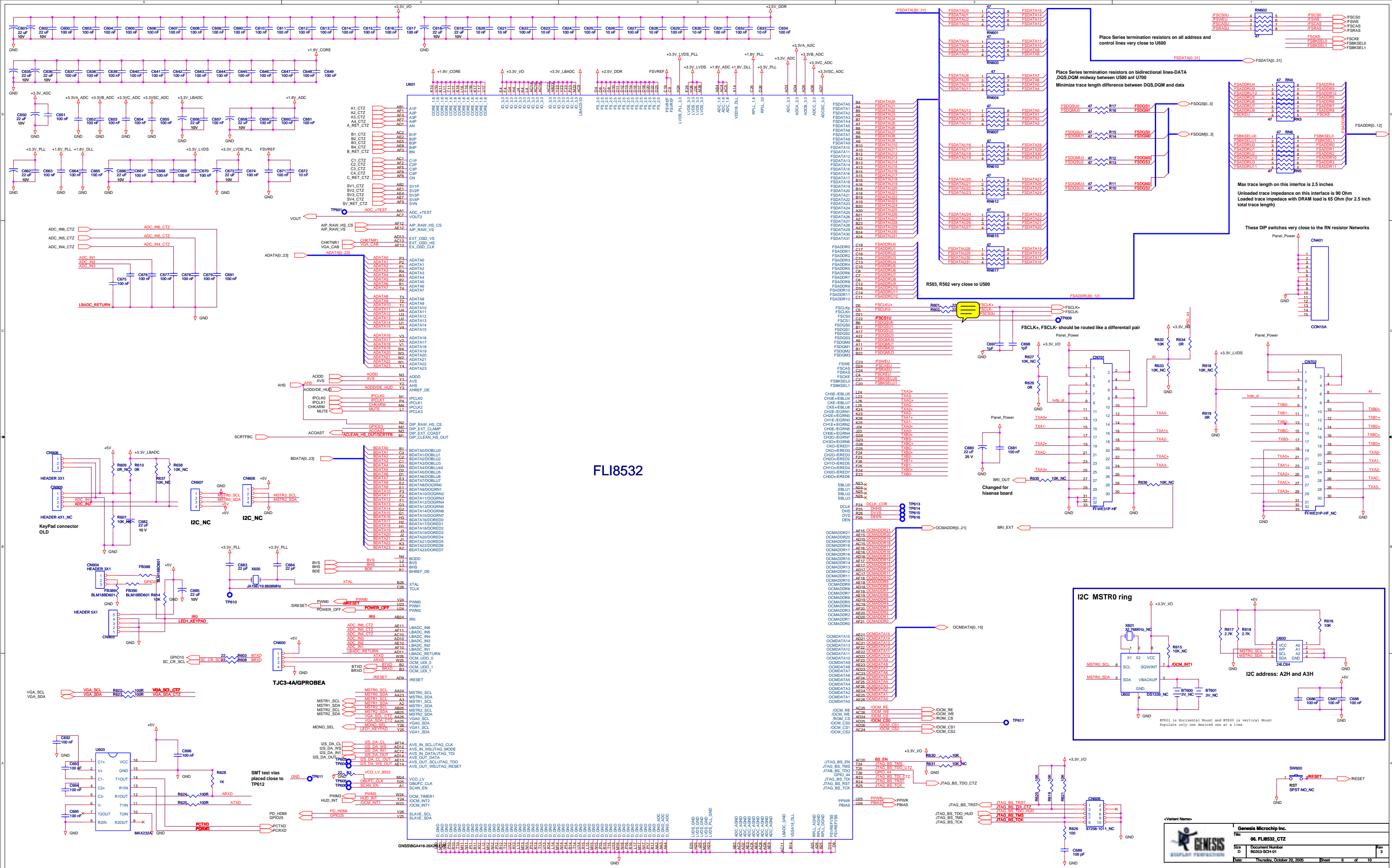
Related Components	Separate Clamping	Single Clamping
JP304, JP305, JP306, JP307	2-3 100nF	1-2 0 Ohm
C304, C307, C310, C313	Do Not Stuff	0 Ohm
R320, R323, R327, R329	57.6Ohm	37.5Ohm
C332, C336, C337, C338, C353, C354, C355, C356, C357, C358, C359, C360, C361, C362, C363	0 Ohm	100nF
C301, C302, C303, C305, C306, C308, C309, C311, C312, C314, C315, C316, C317, C318, C319, C321, C322, C324, C325, C327, C328, C300, C330, C331, C343, C344, C345, C346, C348, C349	100nF	0 Ohm
R301, R302, R303, R305, R306, R308, R309, R311, R312, R314, R315, R316, R317, R318, R319, R321, R322, R324, R325, R328, R300, R330, R331, R332	20Ohm	0 Ohm

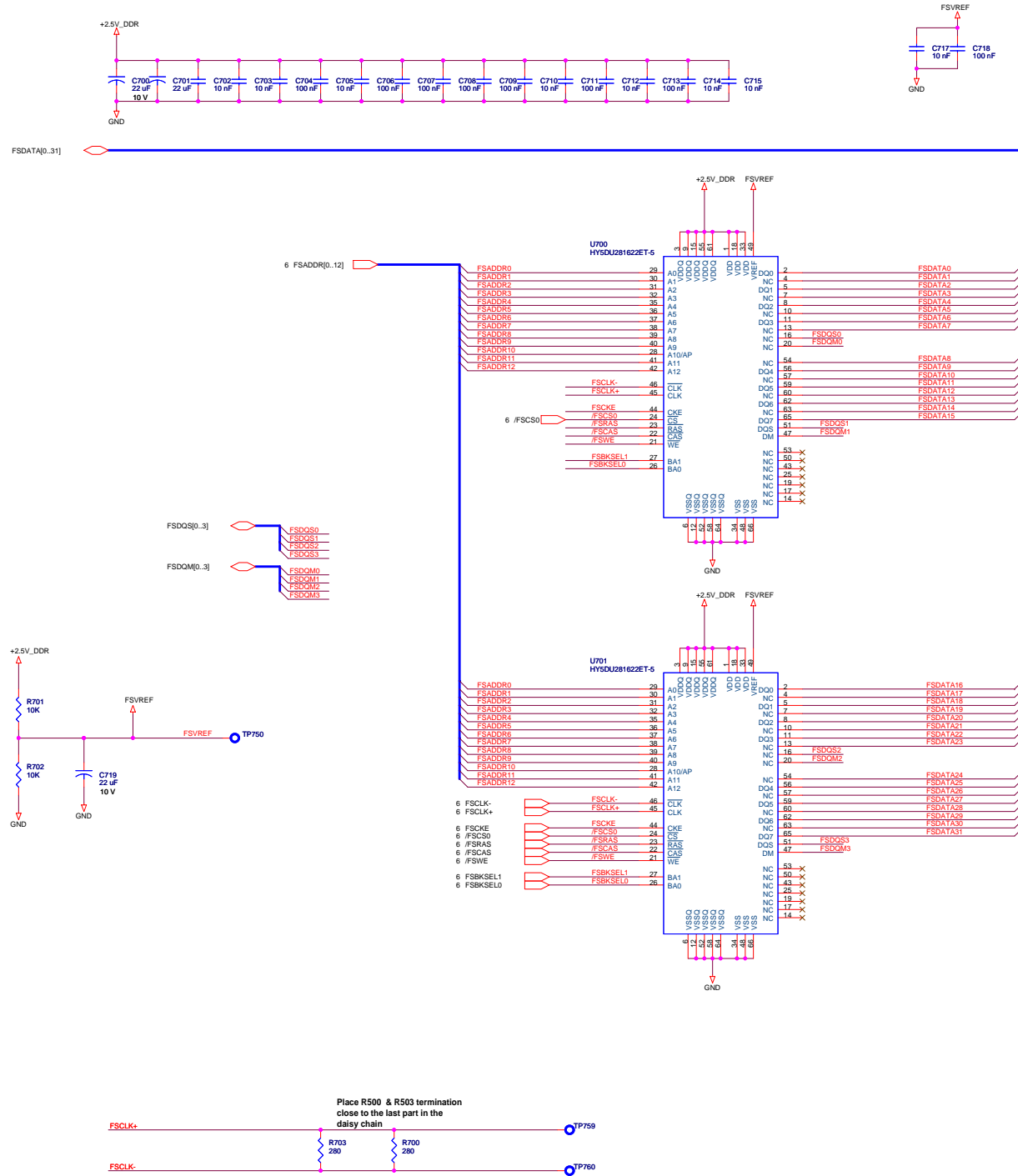
VGA INPUT

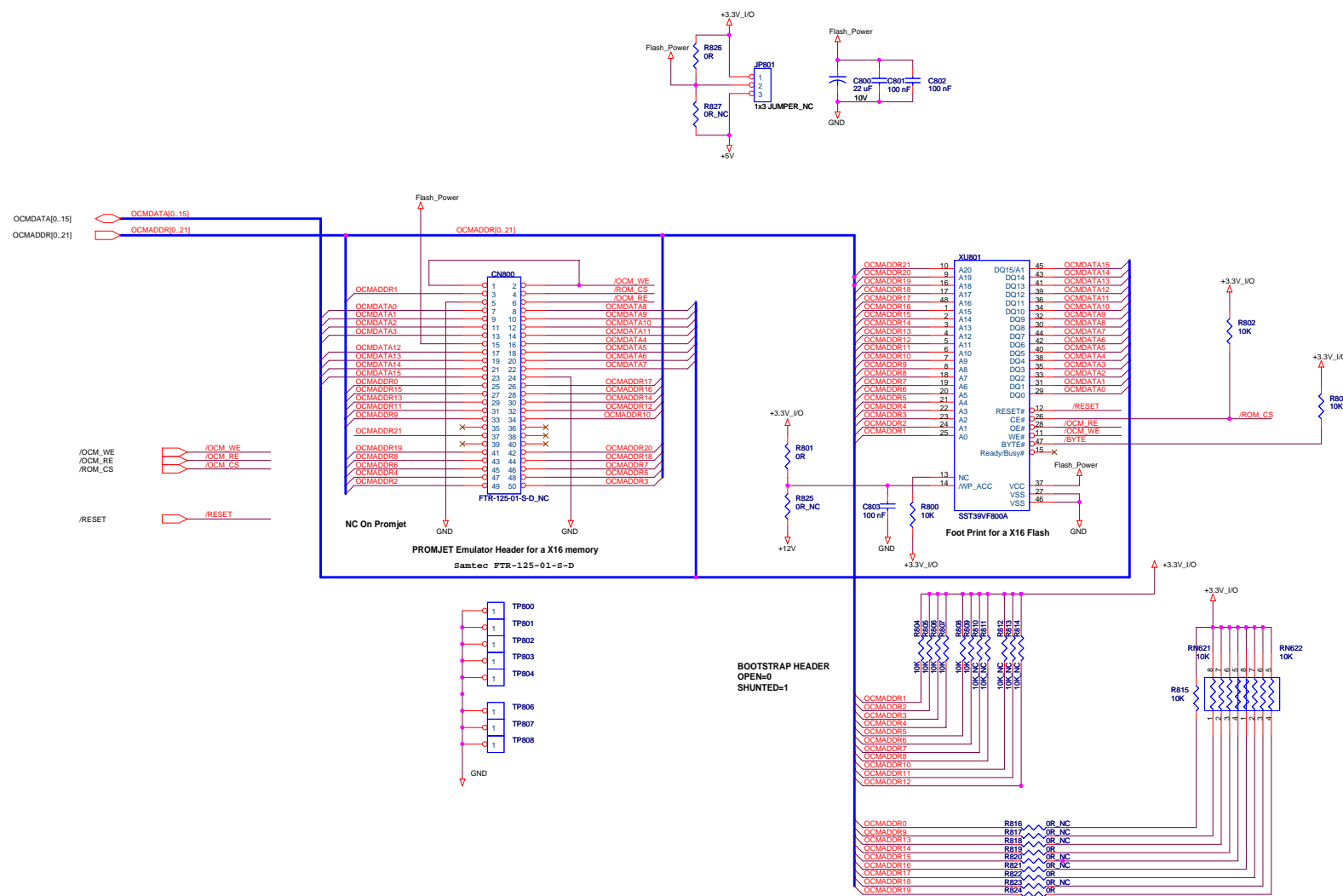








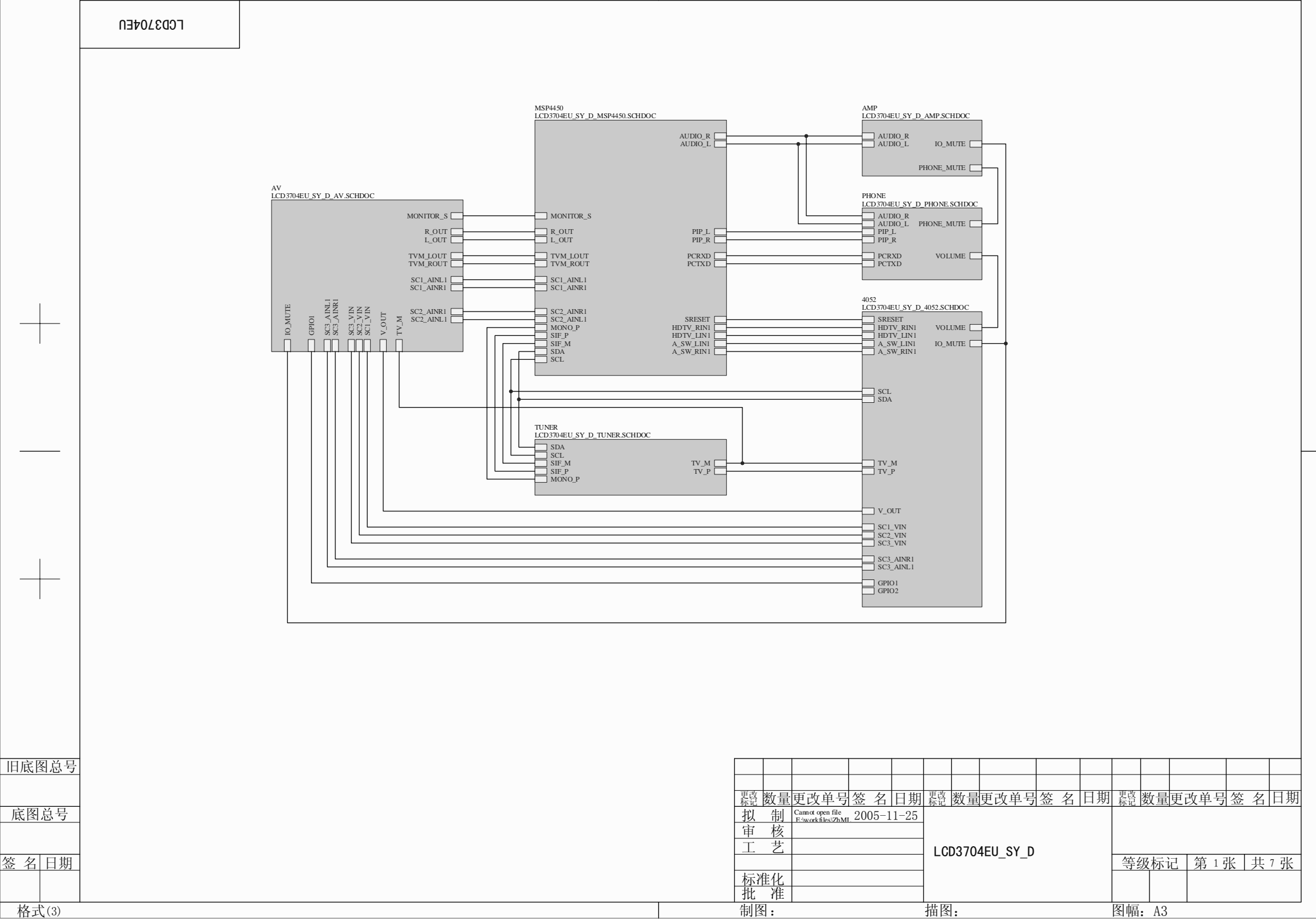




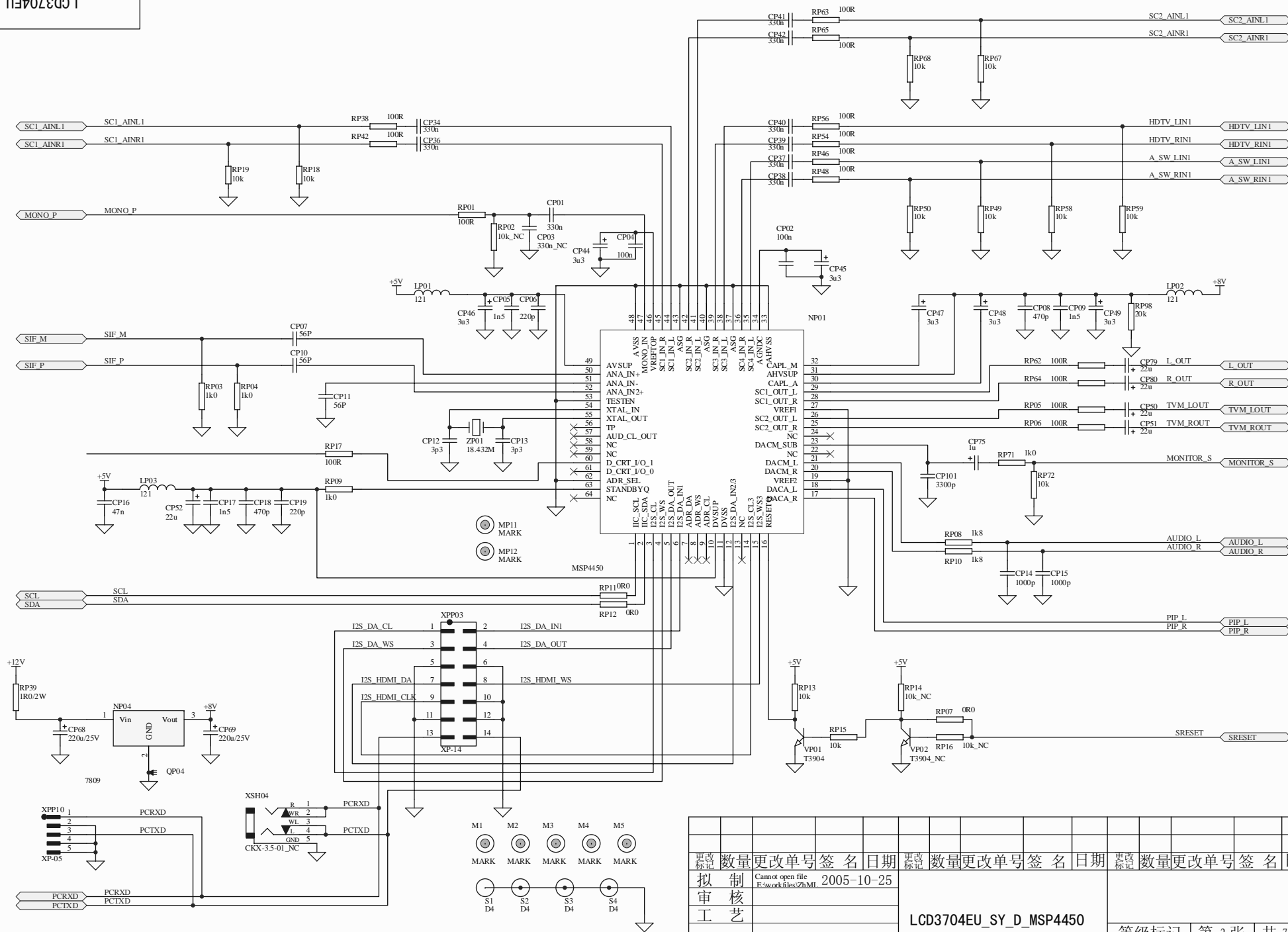
For default Bootstrap don't populate R810 to R813
And Slot JP804 Pin 13 - 14 and Pin 17 - 18

6:0:	I2C to JTAG bridge address or General use
12:7:	For General Purpose use
13:	000 = 20-bit address, 8-bit EXT I/F
14:	001 = 24-bit address, 8-bit EXT I/F
15:	010 = 20-bit address, 16-bit EXT I/F
	011 = 24-bit address, 16-bit EXT I/F
	1XX = OCM disabled, external parallel control bus (testbench)
16:	Open (Internal ROM on, and mapped to top 32K) Close (Internal ROM off-boot from ext ROM)
17:	00 = I2C to JTAG bridge disabled
18:	01 = ICD_SDA on VGA1_SDA, ICD_SCL on VGA1_SCL 10 = ICD_SDA on VGA0_SDA, ICD_SCL on VGA0_SCL 11 = I2C to JTAG bridge disabled, 5 JTAG signals mapped to AVS Pins
19:	Open/0 (External Oscillator on TCLK pin) Close/1 (XTAL and Internal Oscillator)

<Variant Name>



U3704EU



旧底图总号

底图总号

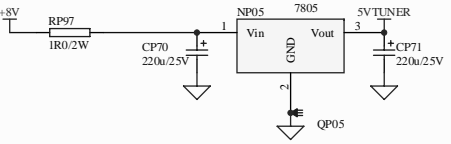
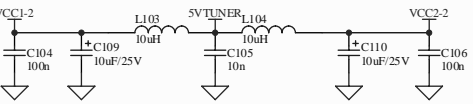
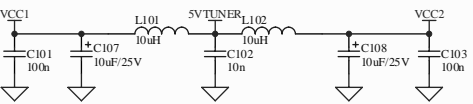
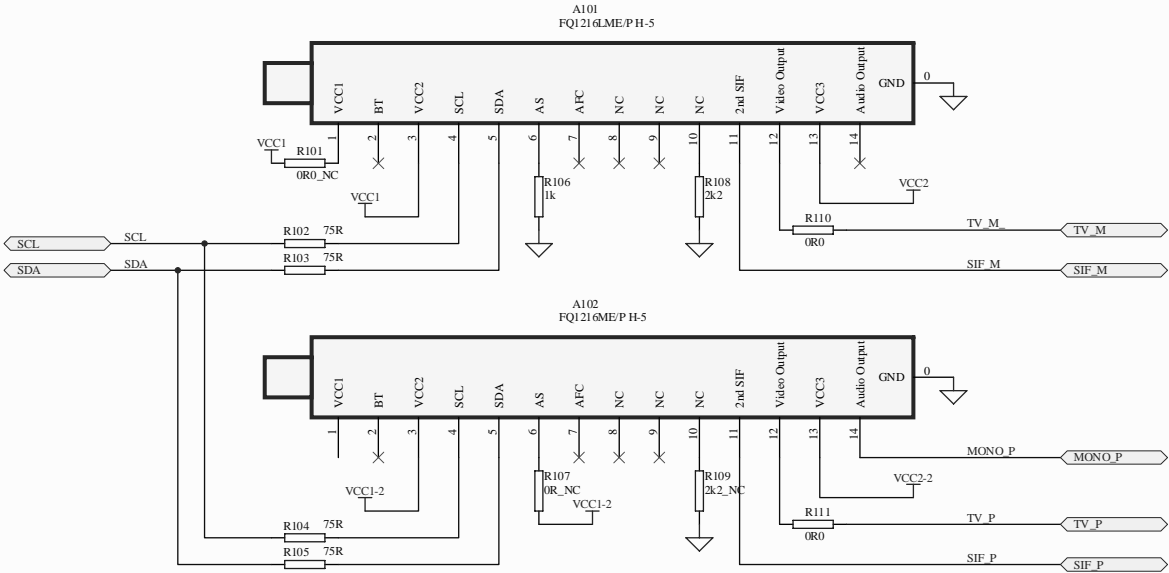
签 名 日期

格式(3)

更改 标记	数量	更改单号	签 名	日期	更改 标记	数量	更改单号	签 名	日期	更改 标记	数量	更改单号	签 名	日期
拟 制				2005-10-25	审 核					LCD3704EU_SY_D_MSP4450				
工 艺														
标准														
化 批														
准 准														
制图：										描图：				
										图幅：A3				

等级标记 第 2 张 共 7 张

LCD3704EU



旧底图总号

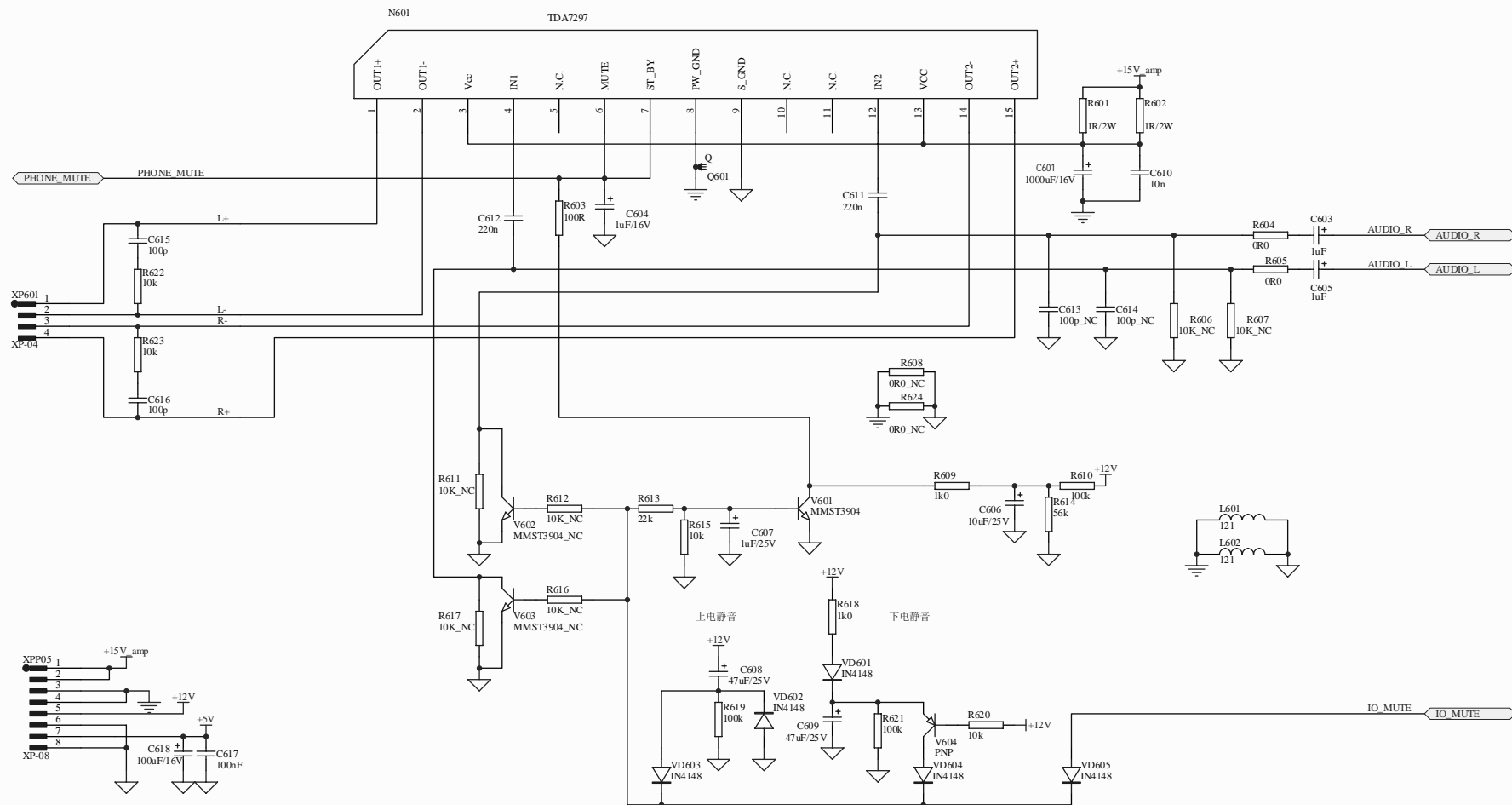
底图总号

签 名 日期

格式(3)

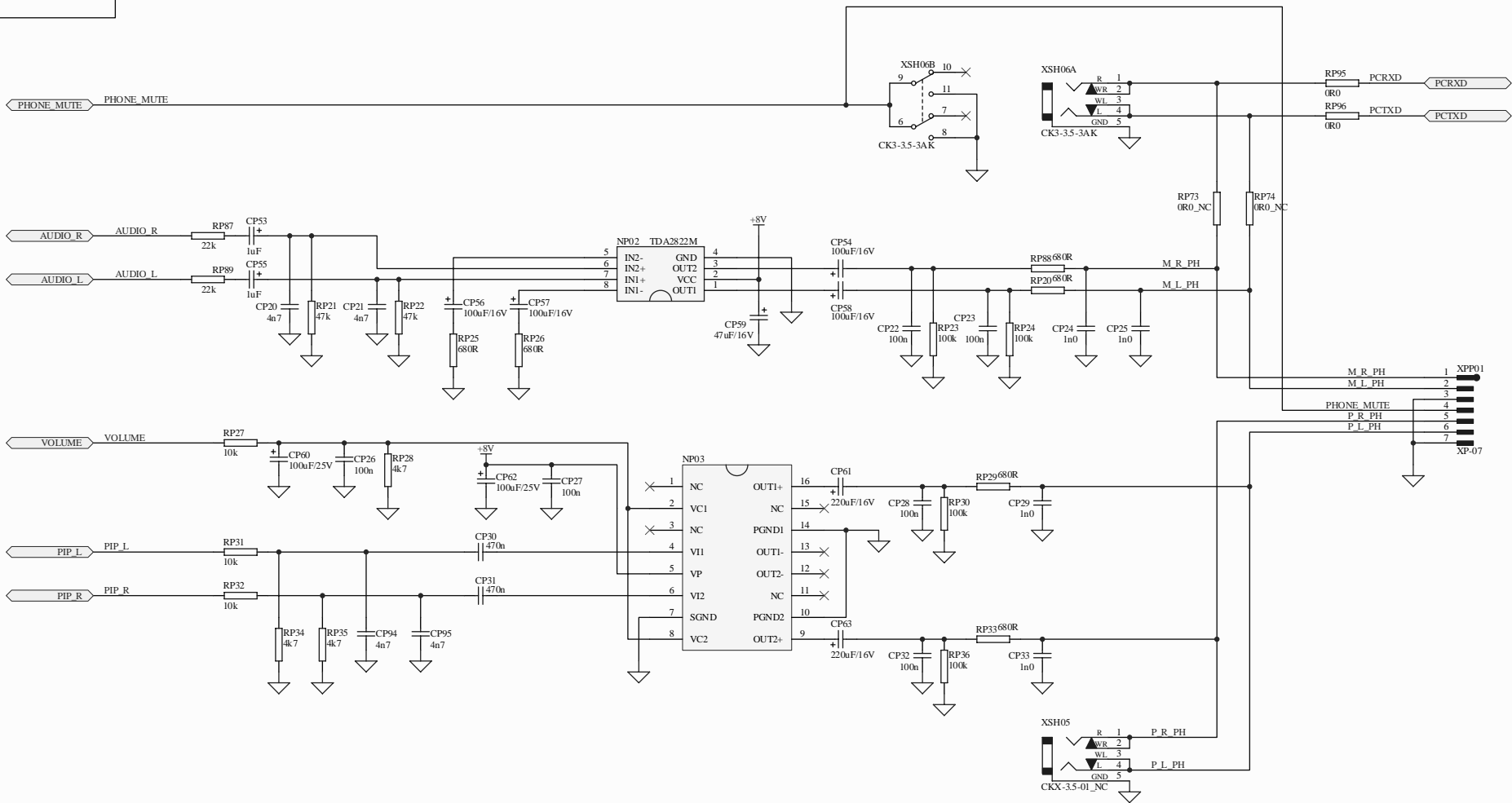
更改 标记	数量	更改单号	签 名	日期	更改 标记	数量	更改单号	签 名	日期	更改 标记	数量	更改单号	签 名	日期					
拟 制				2005-10-25															
审 核																			
工 艺																			
标准 化																			
批 准																			

制图： 描图： 图幅： A3

[illegible]

描图:

图幅: A3



旧底图总号

底图总号

签 名 日期

格式(3)

更改 标记	数量	更改单号	签 名	日期	更改 标记	数量	更改单号	签 名	日期	更改 标记	数量	更改单号	签 名	日期						
拟 制		Cannot open file E:\work files\ZbMI	2005-10-25																	
审 核																				
工 艺																				
标准 化																				
批 准																				

LCD3704EU_SY_D_PHONE

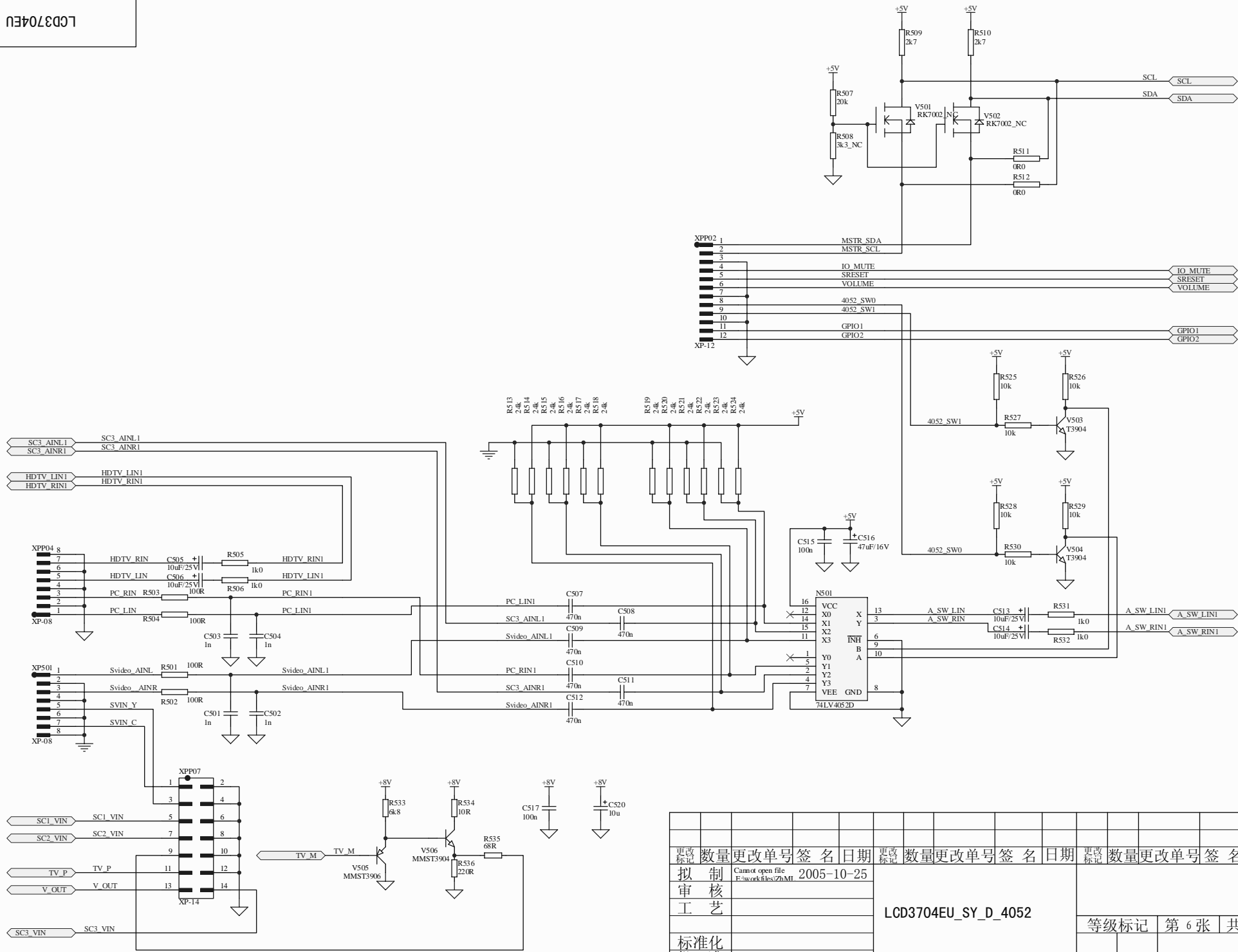
等级标记 第 5 张 共 7 张

制图：

描图：

图幅：A3

LCD3704EU



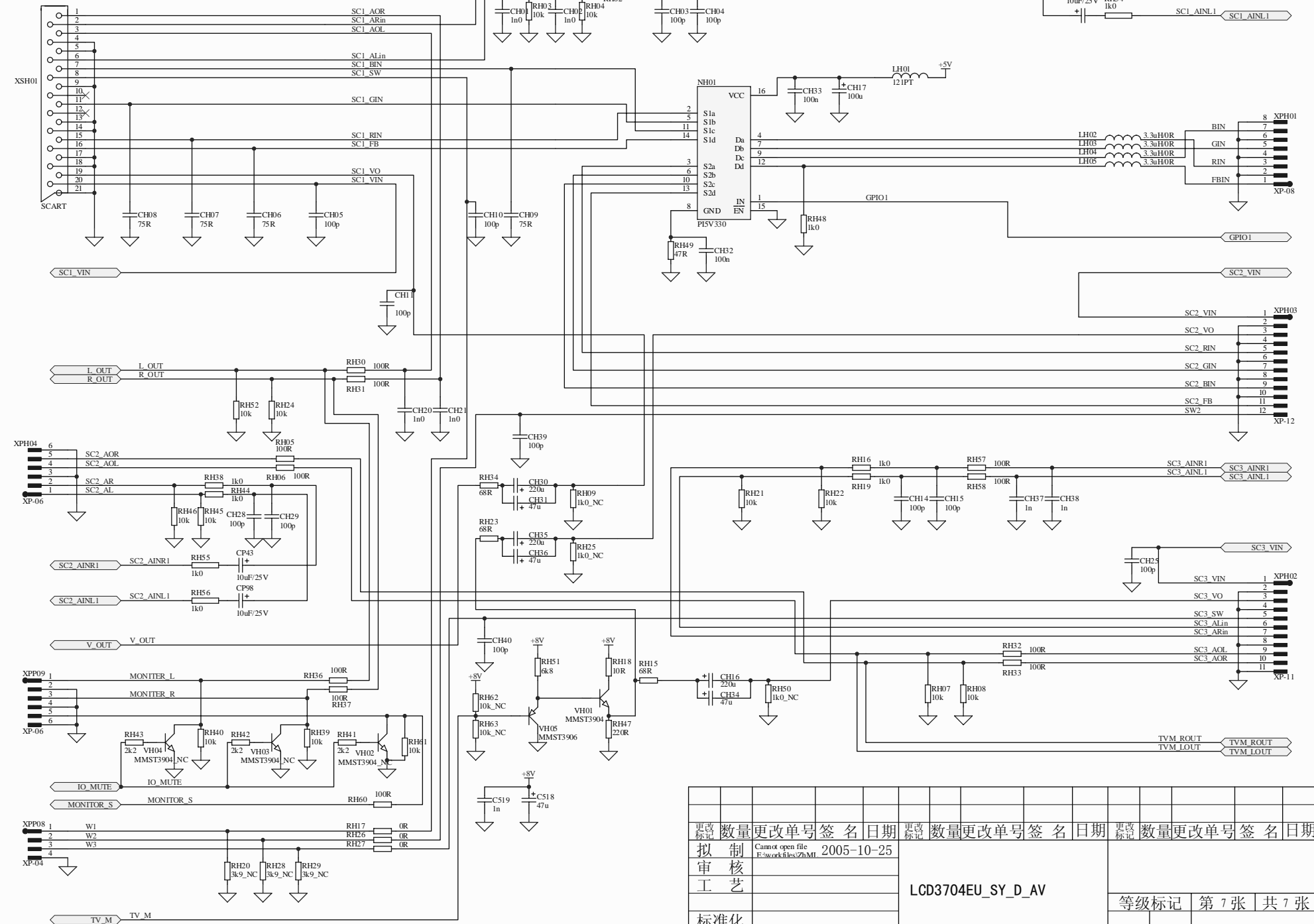
旧底图总号

底图总号

签 名 日期

格式(3)

																																																																																																																																																																																																																																																																																																																																																																																																																																																																																																																																																																																																																																																																																																																																																																																																																																																																																																																																																																																																																																																																																																																																																																																																																																																																																																																																																																																																																																																																																																					</
--	--	--	--	--	--	--	--	--	--	--	--	--	--	--	--	--	--	--	--	--	--	--	--	--	--	--	--	--	--	--	--	--	--	--	--	--	--	--	--	--	--	--	--	--	--	--	--	--	--	--	--	--	--	--	--	--	--	--	--	--	--	--	--	--	--	--	--	--	--	--	--	--	--	--	--	--	--	--	--	--	--	--	--	--	--	--	--	--	--	--	--	--	--	--	--	--	--	--	--	--	--	--	--	--	--	--	--	--	--	--	--	--	--	--	--	--	--	--	--	--	--	--	--	--	--	--	--	--	--	--	--	--	--	--	--	--	--	--	--	--	--	--	--	--	--	--	--	--	--	--	--	--	--	--	--	--	--	--	--	--	--	--	--	--	--	--	--	--	--	--	--	--	--	--	--	--	--	--	--	--	--	--	--	--	--	--	--	--	--	--	--	--	--	--	--	--	--	--	--	--	--	--	--	--	--	--	--	--	--	--	--	--	--	--	--	--	--	--	--	--	--	--	--	--	--	--	--	--	--	--	--	--	--	--	--	--	--	--	--	--	--	--	--	--	--	--	--	--	--	--	--	--	--	--	--	--	--	--	--	--	--	--	--	--	--	--	--	--	--	--	--	--	--	--	--	--	--	--	--	--	--	--	--	--	--	--	--	--	--	--	--	--	--	--	--	--	--	--	--	--	--	--	--	--	--	--	--	--	--	--	--	--	--	--	--	--	--	--	--	--	--	--	--	--	--	--	--	--	--	--	--	--	--	--	--	--	--	--	--	--	--	--	--	--	--	--	--	--	--	--	--	--	--	--	--	--	--	--	--	--	--	--	--	--	--	--	--	--	--	--	--	--	--	--	--	--	--	--	--	--	--	--	--	--	--	--	--	--	--	--	--	--	--	--	--	--	--	--	--	--	--	--	--	--	--	--	--	--	--	--	--	--	--	--	--	--	--	--	--	--	--	--	--	--	--	--	--	--	--	--	--	--	--	--	--	--	--	--	--	--	--	--	--	--	--	--	--	--	--	--	--	--	--	--	--	--	--	--	--	--	--	--	--	--	--	--	--	--	--	--	--	--	--	--	--	--	--	--	--	--	--	--	--	--	--	--	--	--	--	--	--	--	--	--	--	--	--	--	--	--	--	--	--	--	--	--	--	--	--	--	--	--	--	--	--	--	--	--	--	--	--	--	--	--	--	--	--	--	--	--	--	--	--	--	--	--	--	--	--	--	--	--	--	--	--	--	--	--	--	--	--	--	--	--	--	--	--	--	--	--	--	--	--	--	--	--	--	--	--	--	--	--	--	--	--	--	--	--	--	--	--	--	--	--	--	--	--	--	--	--	--	--	--	--	--	--	--	--	--	--	--	--	--	--	--	--	--	--	--	--	--	--	--	--	--	--	--	--	--	--	--	--	--	--	--	--	--	--	--	--	--	--	--	--	--	--	--	--	--	--	--	--	--	--	--	--	--	--	--	--	--	--	--	--	--	--	--	--	--	--	--	--	--	--	--	--	--	--	--	--	--	--	--	--	--	--	--	--	--	--	--	--	--	--	--	--	--	--	--	--	--	--	--	--	--	--	--	--	--	--	--	--	--	--	--	--	--	--	--	--	--	--	--	--	--	--	--	--	--	--	--	--	--	--	--	--	--	--	--	--	--	--	--	--	--	--	--	--	--	--	--	--	--	--	--	--	--	--	--	--	--	--	--	--	--	--	--	--	--	--	--	--	--	--	--	--	--	--	--	--	--	--	--	--	--	--	--	--	--	--	--	--	--	--	--	--	--	--	--	--	--	--	--	--	--	--	--	--	--	--	--	--	--	--	--	--	--	--	--	--	--	--	--	--	--	--	--	--	--	--	--	--	--	--	--	--	--	--	--	--	--	--	--	--	--	--	--	--	--	--	--	--	--	--	--	--	--	--	--	--	--	--	--	--	--	--	--	--	--	--	--	--	--	--	--	--	--	--	--	--	--	--	--	--	--	--	--	--	--	--	--	--	--	--	--	--	--	--	--	--	--	--	--	--	--	--	--	--	--	--	--	--	--	--	--	--	--	--	--	--	--	--	--	--	--	--	--	--	--	--	--	--	--	--	--	--	--	--	--	--	--	--	--	--	--	--	--	--	--	--	--	--	--	--	--	--	--	--	--	--	--	--	--	--	--	--	--	--	--	--	--	--	--	--	--	--	--	--	--	--	--	--	--	--	--	--	--	--	--	--	--	--	--	--	--	--	--	--	--	--	--	--	--	--	--	--	--	--	--	--	--	--	--	--	--	--	--	--	--	--	--	--	--	--	--	--	--	--	--	--	--	--	--	--	--	--	--	--	--	--	--	--	--	--	--	--	--	--	--	--	--	--	--	--	--	--	--	--	--	--	--	--	--	--	--	--	--	--	--	--	--	--	--	--	--	--	--	--	--	--	--	--	--	--	--	--	--	--	--	--	--	--	--	--	--	--	--	--	--	--	--	--	--	--	--	--	--	--	--	--	--	--	--	--	--	--	--	--	--	--	--	--	--	--	--	--	--	--	--	--	--	--	--	--	--	--	--	--	--	--	--	--	--	--	--	--	--	--	--	--	--	--	--	--	--	--	--	--	--	--	--	--	--	--	--	--	--	--	--	--	--	--	--	--	--	--	--	--	--	--	--	--	--	--	--	--	--	--	--	--	--	--	--	--	--	--	--	--	--	--	--	--	--	--	--	--	--	--	--	--	--	--	--	--	--	--	--	--	--	--	--	--	--	--	--	--	--	--	--	--	--	--	--	--	--	--	--	--	--	--	--	--	--	--	--	--	--	--	--	--	--	--	--	--	--	--	--	--	--	--	--	--	--	--	--	--	--	--	--	--	--	--	--	--	--	--	--	--	--	--	--	--	--	--	--	--	--	--	--	--	--	--	--	--	--	--	--	--	--	--	--	--	--	--	--	--	--	--	--	--	--	--	--	--	--	--	--	--	--	--	--	--	--	--	--	--	--	--	--	--	--	--	--	--	--	--	--	--	--	--	--	--	--	--	--	--	--	--	--	--	--	--	--	--	--	--	--	--	--	--	--	--	--	--	--	--	--	--	--	--	--	--	--	--	--	--	--	--	--	--	--	--	--	--	--	--	--	--	--	--	--	--	--	--	--	--	--	--	--	--	--	--	--	--	--	--	--	--	--	--	--	--	--	--	--	--	--	--	--	--	--	--	--	--	--	--	--	--	--	--	--	--	--	--	--	--	--	--	--	--	--	--	--	--	--	--	--	--	--	--	--	--	--	--	----

[illegible]

图幅: A3