

LCD Television

Service Manual

Chassis: MT5653

Product:

LHD32K370WTEU<DN40K370WTEU & LTDN50K370WTGEU

Main board: 5880

Digital system: DVB-T+C+T2

Ver 1.0

June, 2014

Contents

Contents	- 2 -
Service Manual	- 3 -
1. Precautions and notices.....	- 3 -
1.1 Warning.....	- 4 -
1.2 Notes.....	- 7 -
2. Product Function Specifications	- 9 -
3. Factory/Service OSD Menu and Adjustment.....	- 15 -
3.1 How to enter the Factory OSD Menu	- 15 -
3.2 Factory OSD Menu.....	- 18 -
3.3 Designer Menu.....	- 22 -
4. Software Upgrading.....	- 24 -
Before upgrading, read the following	- 24 -
4.1 USB Software Upgrading directly	- 24 -
4.2 USB upgrade defeat.....	- 24 -
4.3 Upgrading with the FlashTool V0.6.0.exe	- 27 -
4.4 Software update	- 31 -
Software update comprises three ways.....	- 31 -
5. Trouble shooting	- 37 -
5.1 Troubleshooting for Remote Control	- 38 -
5.2 Troubleshooting for Function Key.....	- 39 -
5.3 TV won't Power On.....	- 40 -
5.4 Troubleshooting for Audio.....	- 41 -
5.5 Troubleshooting for TV/VGA/HDMI input.....	- 42 -
5.6 Troubleshooting for YPbPr input.....	- 43 -
5.7 Troubleshooting for Video input.....	- 44 -
6. Signals Block Diagram and power assign:	- 44 -
7. Schematic circuit diagram	- 44 -
8. Explode View.....	- 44 -

Service Manual

1. Precautions and notices

BEFORE SERVICING THE LCD TV, READ THE SAFETY PRECAUTIONS IN THIS MANUAL.

USE ONLY MANUFACTURER SPECIFIED REPLACEMENT PARTS WHEN SERVICING.

USE OF NON-AUTHORIZED PARTS WILL VOID THE MANUFACTURE'S WARRANTY

Proper service and repair is important to the safe, reliable operation of all Hisense Equipment. The service procedures recommended by Hisense and described in this Service Guide are effective methods of performing service operations. Some of these service operations require the use of tools specially designed for the purpose. The special tools should be used when and as recommended.

It is important to note that this manual contains various CAUTIONS and NOTICES which should be carefully read in order to minimize the risk of personal injury to service personnel. The possibility exists that improper service methods may damage the equipment and pose risk of personal injury

. It is also important to understand that these CAUTIONS and NOTICES ARE NOT EXHAUSTIVE. Service should only be performed by an experienced electronics

technician trained in the proper Television safety and service methods and procedures
Hereafter throughout this manual, HISENSE will be referred to.

1.1 Warning

1.1.1

Critical components having special safety characteristics are identified with a ▲ by the Ref. No. in the parts list. Use of non-manufacturer's recommended parts may create shock, fire, or other hazards. Under no circumstances should the original design be modified or altered without written permission from RCA. Hisense Eassumes no liability, express or implied, arising out of any unauthorized modification of design. Servicetech assumes all liability.

DANGER CAUTION

TO ENSURE THE CONTINUED RELIABILITY OF THIS PRODUCT, USE ONLY ORIGINAL MANUFACTURER'S REPLACEMENT PARTS, WHICH ARE LISTED WITH THEIR PART NUMBERS IN THE PARTS LIST SECTION OF THIS SERVICE GUIDE.

1.1.2.

All ICs and many other semiconductors are susceptible to electrostatic discharges (ESD). Careless handling during repair can reduce life drastically. When repairing, be sure to use anti-static table mats and properly use a grounding wrist stra. Keep components and tools also at this same potential.

IMPORTANT:

Always disconnect the power cord from AC outlet before replacing parts or modules.

1.1.3

To prevent electrical shock, use only a properly grounded 3 prong outlet or extension cord.

1.1.4

When replacement parts are required, be sure to use replacement parts specified by the manufacturer or have the same characteristics as the original part. Unauthorized substitutions may result in fire, electric shock, or other hazards and will void the manufacturer's warranty.

1.1.5

Safety regulations require that after a repair the set must be returned in its original condition. In addition, prior to closing set, check that:

-Note:

>All wire harnesses and flex cables are properly routed and secured with factory tape and/or mounted cable clamps.

> All cables and connectors are properly insulated and do not have any bare wires/lead exposed

1.1.6

(1) Do not supply a voltage higher than that specified to this product. This may

damage the product and may cause a fire.

(2) Do not use this product:

> High humidity areas

> In an area where any water could enter or splash into the unit.

High humidity and water could damage the product and cause fire.

(3) If a foreign substance (such as water, metal, or liquid) gets inside the panel module, immediately turn off the power. Continuing to use the product may cause fire or electric shock.

(4) If the product emits smoke, and abnormal smell, or makes an abnormal sound, immediately turn off the power. Continuing to use the product, it may cause fire or electric shock.

(5) Do not pull out or insert the power cable from/to an outlet with wet hands. It may cause electric shock.

(6) Do not damage or modify the power cable. It may cause fire or electric shock.

(7) If the power cable is damaged, or if the connector is loose, do not use the product: otherwise, this can lead to fire or electric shock.

(8) If the power connector or the connector of the power cable becomes dirty or dusty, wipe it with a dry cloth. Otherwise, this can lead to fire.

(9) Use only with the cart, stand, tripod, bracket, or table specified by the manufacturer, or sold with the apparatus. When a cart is used, use caution when moving the cart/apparatus combination to avoid injury from tip-over

1.2 Notes

Notes on Safe Handling of the LCD panel and during service

The work procedures shown with the Note indication are important for ensuring the safety of the product and the servicing work. Be sure to follow these instructions.

- Before starting the work, secure a sufficient working space.
- At all times other than when adjusting and checking the product, be sure to turn OFF the POWER Button and disconnect the power cable from the power source of the TV during servicing.
- To prevent electric shock and breakage of PC board, start the servicing work at least 30 seconds after the main power has been turned off. Especially when installing and removing the power board, start servicing at least 2 minutes after the main power has been turned off.
- While the main power is on, do not touch any parts or circuits other than the ones specified. If any connection other than the one specified is made between the measuring equipment and the high voltage power supply block, it can result in electric shock or may trip the main circuit breaker When installing the LCD module in, and removing it from the packing carton, be sure to have at least two persons perform the work.
- When the surface of the panel comes into contact with the cushioning materials, be sure to confirm that there is no foreign matter on top of the cushioning materials before the surface of the panel comes into contact with the cushioning materials. Failure to observe this precaution may result in, the surface of the panel being scratched by foreign

matter.

- Be sure to handle the circuit board by holding the large parts as the heat sink or transformer. Failure to observe this precaution may result in the occurrence of an abnormality in the soldered areas.
- Do not stack the circuit boards. Failure to observe this precaution may result in problems resulting from scratches on the parts, the deformation of parts, and short-circuits due to residual electric charge.
- Perform a safety check when servicing is completed. Verify that the peripherals of the serviced points have not undergone any deterioration during servicing. Also verify that the screws, parts and cables removed for servicing purposes have all been returned to their proper locations in accordance with the original setup.



The lightning flash with arrowhead symbol, within an equilateral triangle is intended to alert the user to the presence of uninsulated dangerous voltage within the products enclosure that may be of sufficient magnitude to constitute a risk of electric shock.



The exclamation point within an equilateral triangle is intended to alert the user to the presence of important operating and maintenance (servicing) instructions in the literature accompanying the set.

2. Product Function Specifications

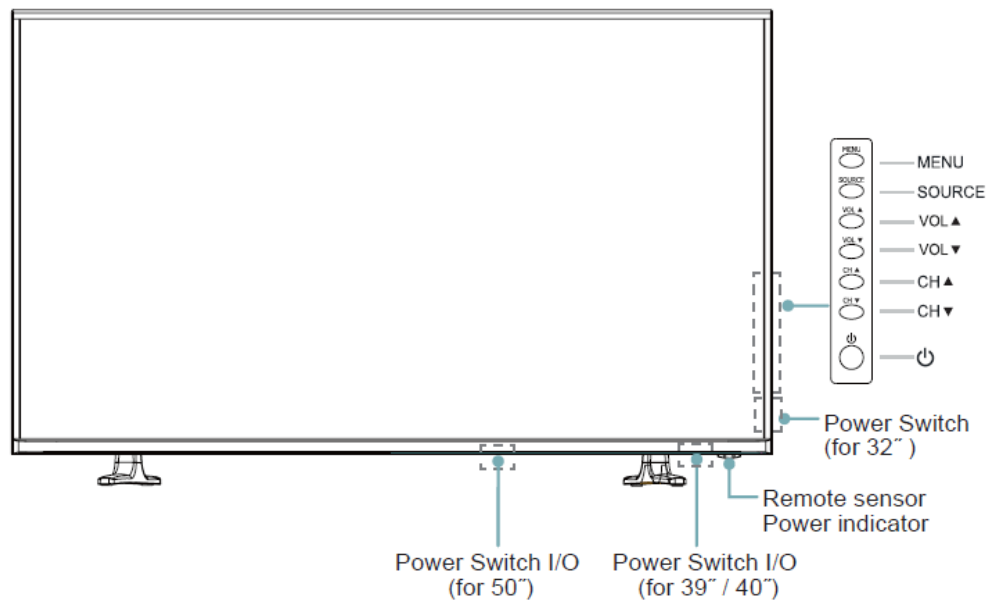
2.1 Feature


Product Type	Main & Power board	Feature	panel	LVDS cable
LHD32K370WTEU	5880 、 5427	DVB-T+C+T2 ，HBBTV，DLNA,Wifi, ASTRA LCN,PC channel editing/CI CARD/DMP, VISION; Linux、	HE315GH-E31	HX2-2x22KLB500P-HS-1ROH\ROH
LTDN40K370WTEU	5880 、 5737		HE400HF-B31	HX2-2x22KLB500P-HS\ROH
LTDN50K370WTGEU	5880 、 5687		HE500HF-B57	HX2-2x22KLB550P-HS-

2.2 Layout

K370 mould

TV Front

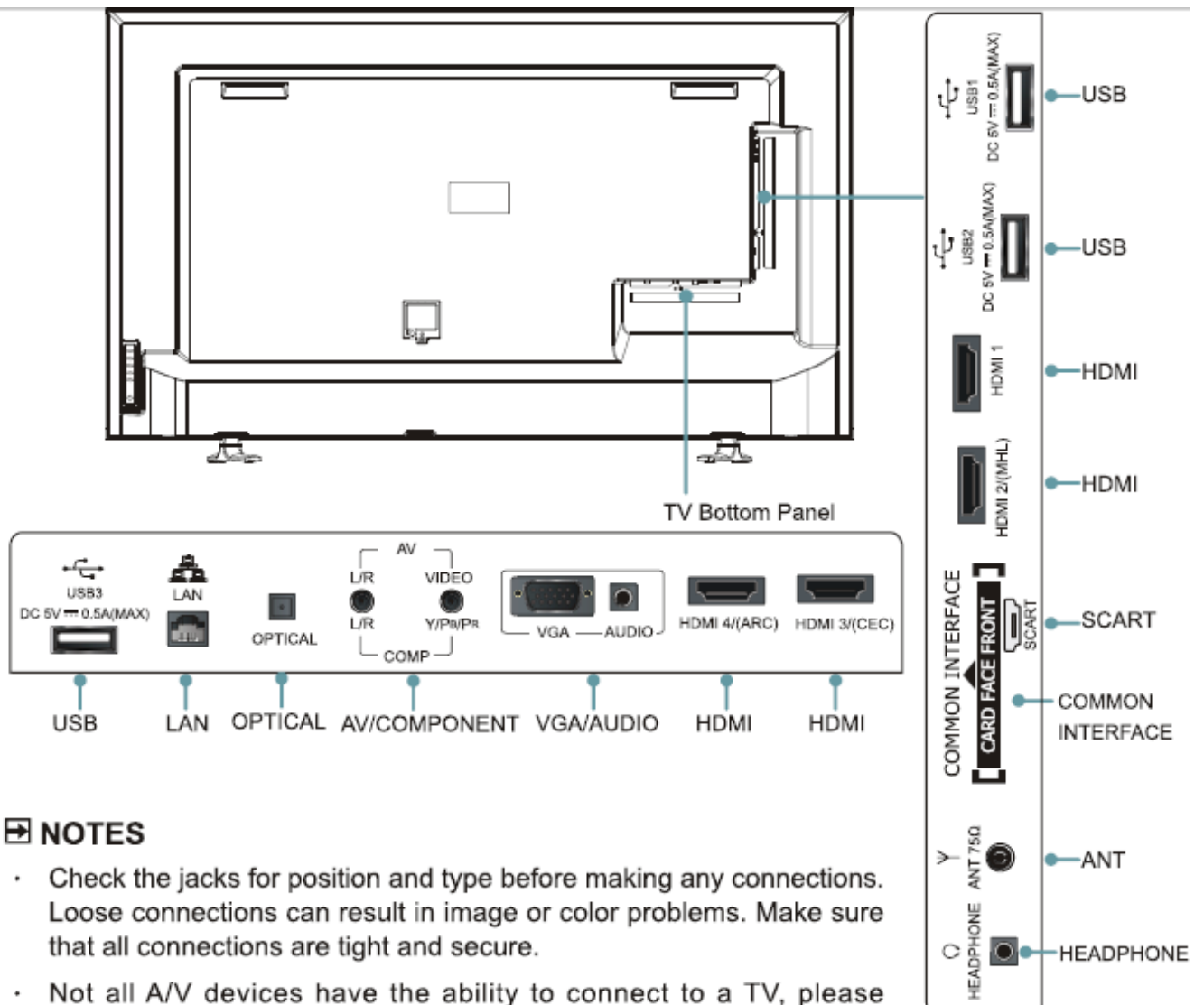


Item	Description
Power Switch I/O	Switch the I/O power ON or OFF.
Power Indicator	Red lights up in standby mode. Blue lights up when the TV is switched on.
Remote Sensor	Receives remote signals from the remote control. Caution: Do not put anything near the sensor, as its function may be affected.
MENU	Display an on-screen menu to setup your TV's features.
SOURCE	Select among the different input signal sources.
VOL ▲ / ▼	Adjust the volume.
CH ▲ / ▼	Switch between channels.
Power Button 	Turn on the TV from the standby mode or switch the TV back to standby mode. Caution: The TV consumes the power even in standby mode. Please turn the power off or unplug the power cord to save the power.

NOTES

- The Picture is Only for Reference.
- Powering on the TV requires several seconds to load program. Do not rapidly turn the TV off as it may cause the TV to work abnormally.

TV Rear (only one tuner)



NOTES

- Check the jacks for position and type before making any connections. Loose connections can result in image or color problems. Make sure that all connections are tight and secure.
- Not all A/V devices have the ability to connect to a TV, please

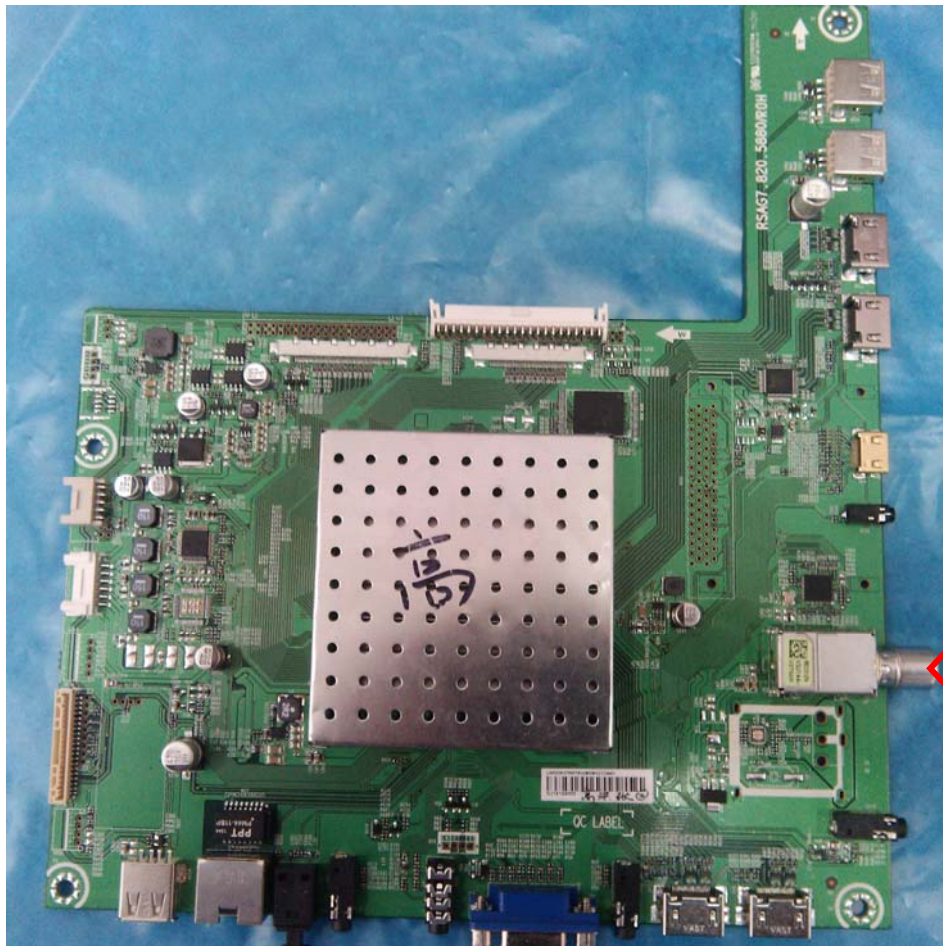
refer to the user's manual of your A/V device for compatibility and connections procedure.

Before connecting external equipment, remove the mains plug from the wall socket. This may cause electric shock.

LTDN50K370WTGEU & LTDN40K370WTEU main board :5880

Main board :5880

The TOP



DVB-T2
(SU-REZ212N)

The bottom of main board :5880



- Before connecting external equipment, remove the mains plug from the wall socket. This may cause electric shock.

2.3 Specification

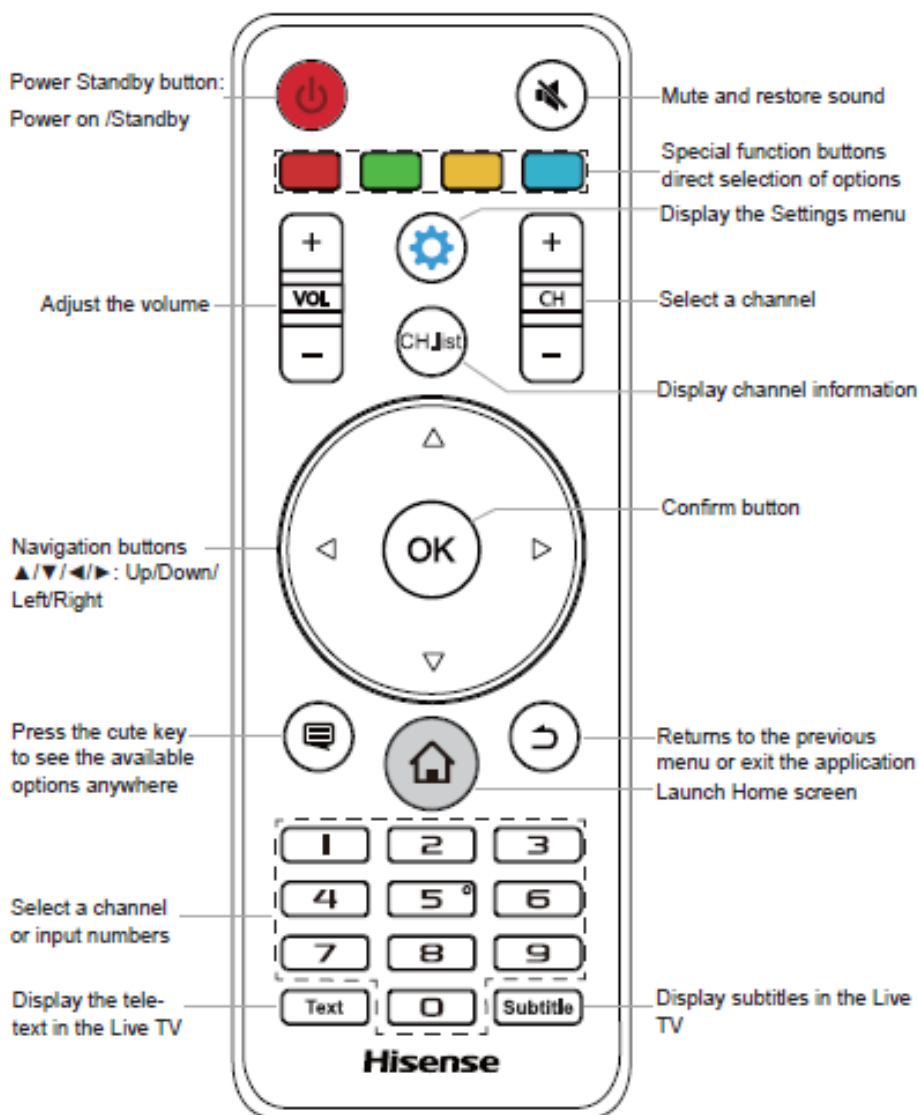
Model Name		LHD32K370WTEU	LTDN40K370WTEU	LTDN50K370WTGEU
Dimension	Without Stand (W×H×D)	29.1×17.1×2.3 inches (738×434×59 mm)	35.9×21.1×2.6 inches (911×536×65 mm)	44.0×25.7×2.4 inches (1118×652×60 mm)
	With Stand (W×H×D)	29.1×18.4×6.9 inches (738×468×175 mm)	35.9×22.4×7.5 inches (911×568×190 mm)	44.0×27.0×8.5 inches (1118×686×215 mm)
Weight	Without Stand	13.2 lbs (6 kg)	24.3 lbs (11 kg)	35.3 lbs (16 kg)
	With Stand	13.7 lbs (6.2 kg)	24.9 lbs (11.3 kg)	36.4 lbs (16.5 kg)
Active Screen Size (Diagonal)		32 inches	40 inches	50 inches
Screen resolution		1366×768	1920×1080	1920×1080
Audio power		6W + 6W	7W + 7W	10W + 10W
Power consumption		Please refer to the rating label.		
Power supply		Please refer to the rating label.		
Receiving systems	Analog	PAL-D/K, B/G, I SECAM-D/K, B/G, L/L'		
	Digital	DVB-T, DVB-T2, DVB-C (for some countries)		
Environmental conditions		Temperature: 41°F - 95°F (5°C - 35°C) Humidity: 20% - 80% RH Atmospheric pressure: 86 kPa - 106 kPa		
Power supply		Please refer to the rating label.		
Receiving systems	Analog	PAL-D/K, B/G, I SECAM-D/K, B/G, L/L'		
	Digital	DVB-T, DVB-T2, DVB-C (for some countries)		
Environmental conditions		Temperature: 41°F - 95°F (5°C - 35°C) Humidity: 20% - 80% RH Atmospheric pressure: 86 kPa - 106 kPa		
Component Input		480 I / 60 Hz, 480 P / 60 Hz, 576 I / 50 Hz, 576 P / 50 Hz, 720 P / 50 Hz, 720 P / 60 Hz, 1080 I / 50 Hz, 1080 I / 60 Hz, 1080 P / 50 Hz, 1080 P / 60 Hz		
VGA Input		VGA (640×480 / 60 Hz), SVGA (800×600 / 60 Hz), XGA (1024×768 / 60 Hz)		
HDMI Input		RGB / 60 Hz (640×480, 800×600, 1024×768) YUV / 60 Hz (480 I, 480 P, 720 P, 1080 I, 1080 P) YUV / 50 Hz (576 I, 576 P, 720 P, 1080 I, 1080 P)		

3. Factory/Service OSD Menu and Adjustment


3.1 How to enter the Factory OSD Menu

Remote control picture as below

Note: The picture is only for reference, detail see the User Manual, Please.



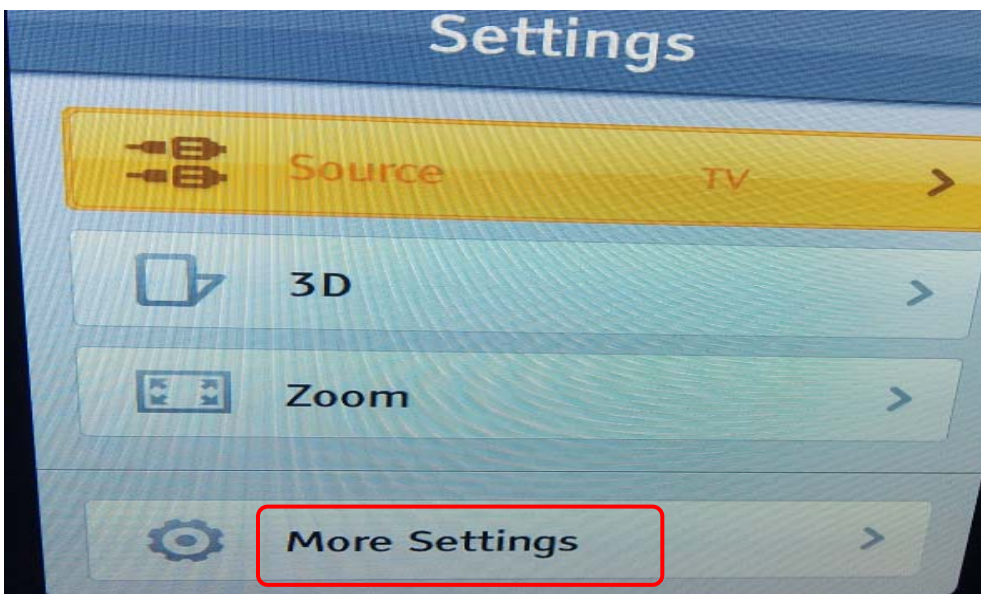
. With user's RC

1. Power TV On
2. Press  button and call up Setting Menu.
3. Setting -> More setting,,then press "Ok" button on RC.
4. Select Sound-> Speaker setting -> Balance
5. when Balance is "0" ,Enter 1->9->6->9 in sequence.

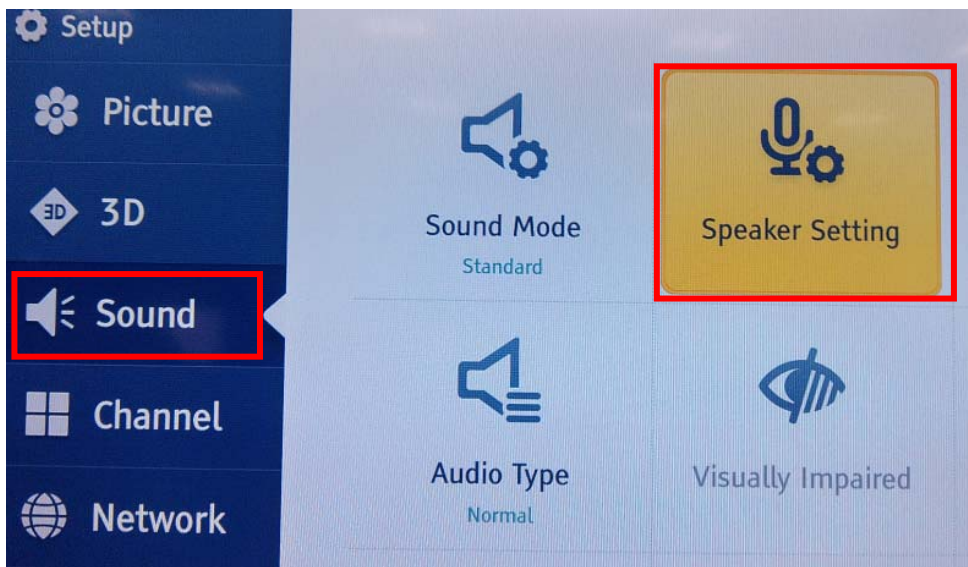
Note: If necessary, re-enter number keys.

6. Factory OSD appears.
7. DC turn off and turn on the TV, which can exit the factory OSD.

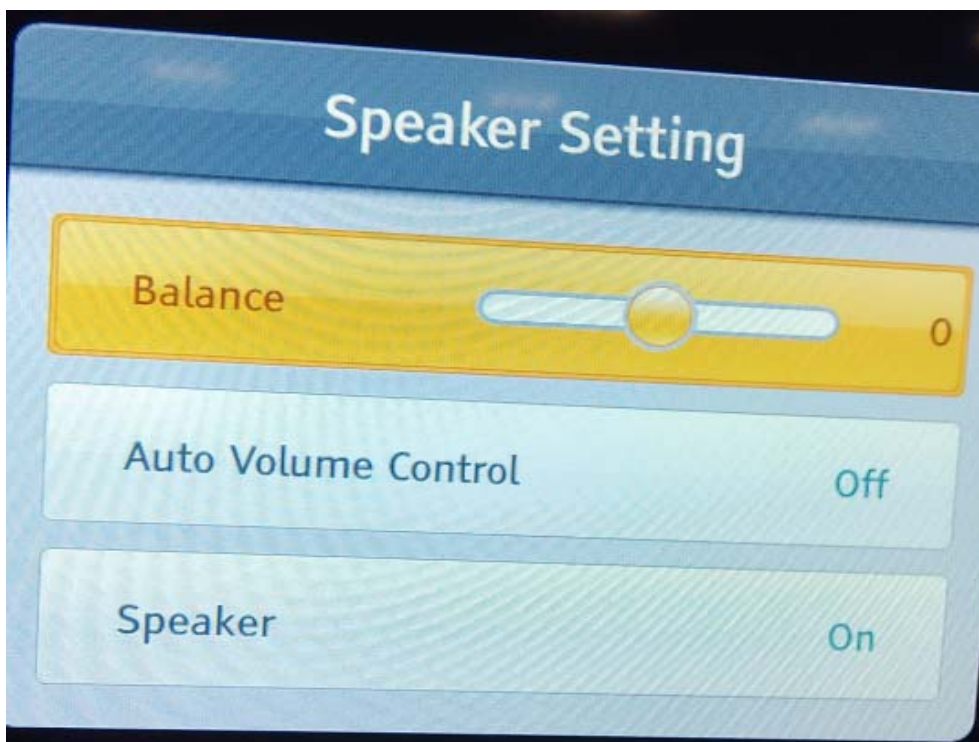
Figures as following:



Next

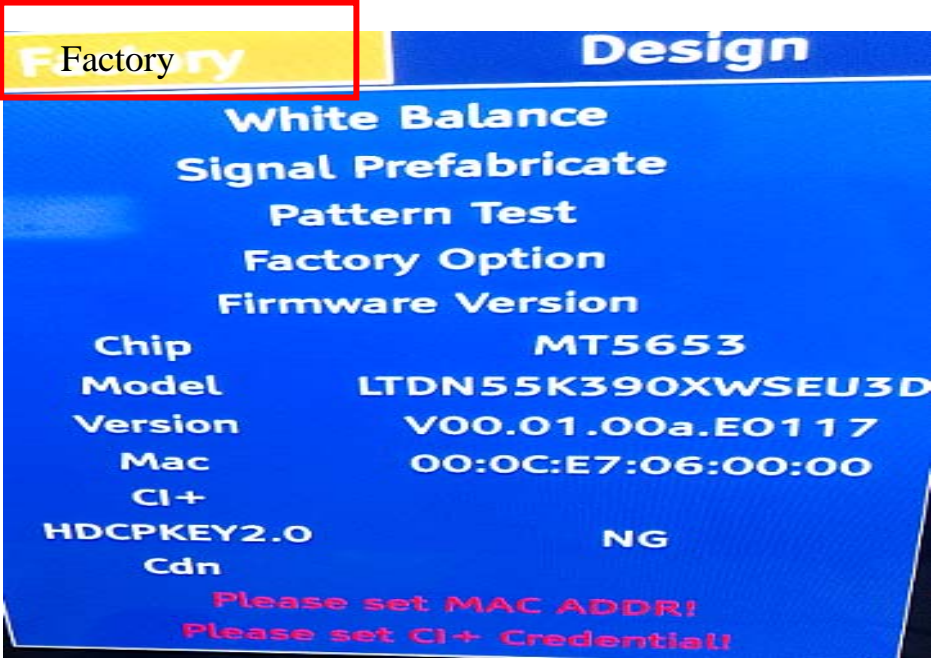


when Balance is “0” ,Enter 1->9->6->9 in sequence.



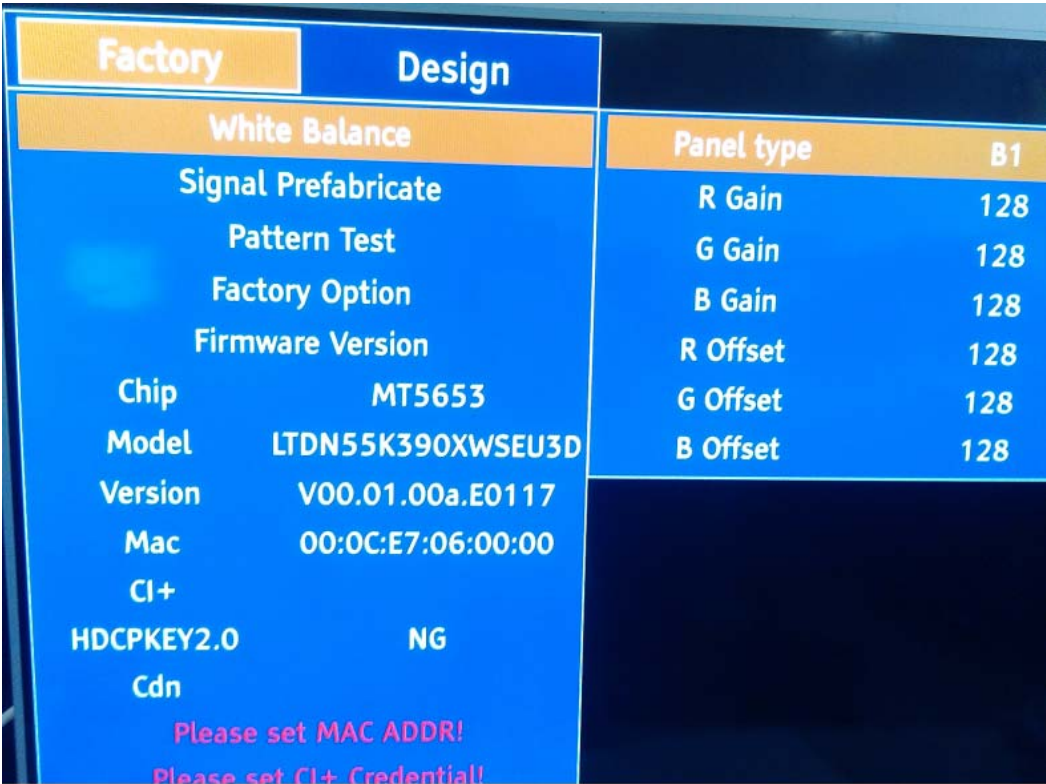
3.2 Factory OSD Menu

(Take LTDN55K390XWSEU3D for example)



3.2.1 White Balance

Note: Different source has different WB values. Before adjusting, please change to desired source.



3.2.1 Signal prefabricate

White Balance			
Signal Prefabricate		Huang Dao (old)	
Pattern Test		Huang Dao (new)	
Factory Option		Qing Dao	
Firmware Version		Gui Yang	
Chip	MT5653	Jiang Men	
Model	LTDN55K390XWSEU3D	Egypt	
Version	V00.01.00a.E0117	South Africa	
Mac	00:0C:E7:06:00:00	Algeria	
CI+		Syria	
HDCPKEY2.0	NG	Malaysia	
Cdn		Iran	
Please set MAC ADDR!		Indonesia	
Please set CI+ Credential!		Russia	
		Poland	

3.2.3 Factory Option

Factory	Design		
White Balance			
Signal Prefabricate			
Pattern Test			
Factory Option		TO FAC	M
Firmware Version		Blue Mute	Off
Chip	MT5653	HbbTV Support	On
Model	LTDN55K390XWSEU3D	Clone	
Version	V00.01.00a.E0117	LVDS Spread	0
Mac	00:0C:E7:06:00:00	OSD Language	English
CI+		Country	Austria
HDCPKEY2.0	NG	Update CI+ Credential	
Cdn		Query CI + Credential	
Please set MAC ADDR!		Clean Protected	
Please set CI+ Credential!		Clean All	

	Item	Default	Options	Notes
1	MODE	M	M, U	M-Can enter factory mode with factory RC or user RC. U-Can enter factory mode only with user' s RC.

Note: MODE “M” is only used for factory production.

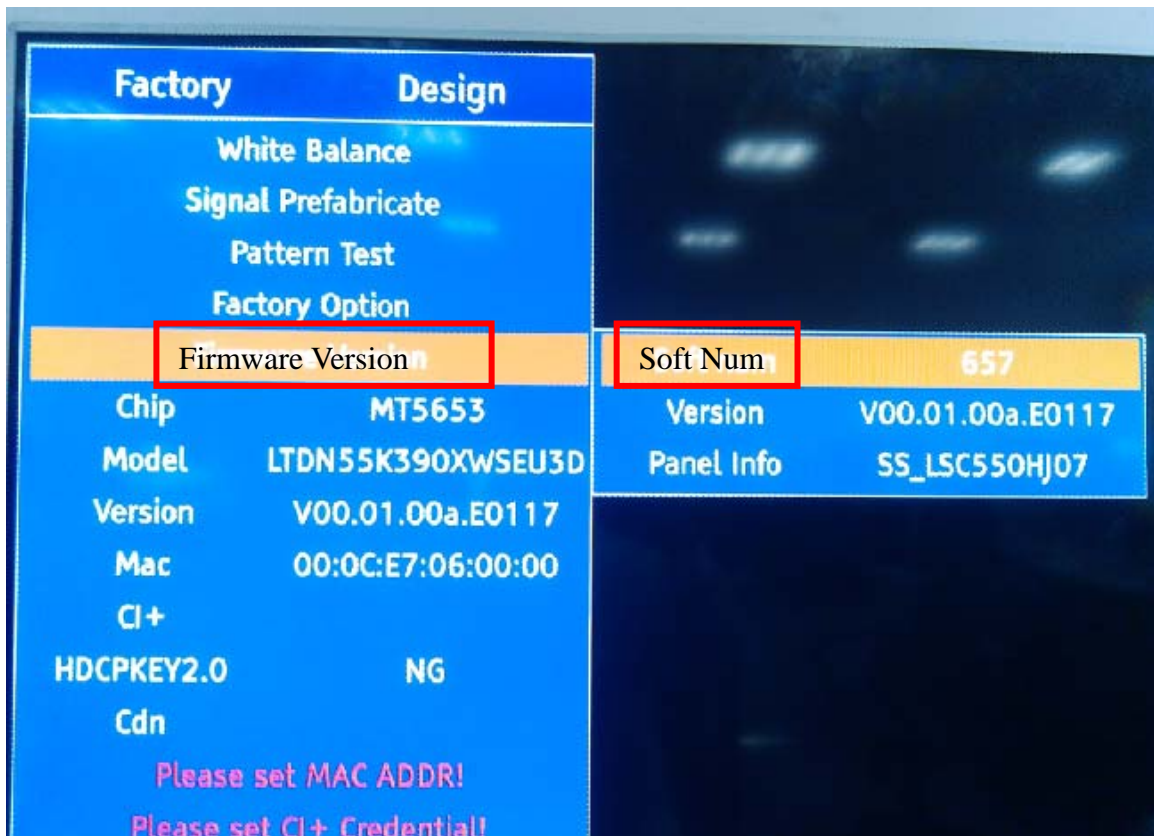
Clear the EEPROM

Item	Meaning	Note
Clean Protected	Clear partly	Clean data except WB data and Auto Color data
Clean All	Clear completely	Clean all data

Update CI+Credential

Query CI+Credential

3.2.4 Firmware Version



Note: The factory menu data varies according to different sources. In case of changing the factory data by error, you can choose to "Clean Protected", by which you can resume the default value.

To clear the EEPROM:

- Select the item "Clean Protected".
- Press VOL+ button to clear the EEPROM data.
- Close the OSD menu after 5 seconds.
- Restart the TV.

3.3 Designer Menu

Factory	Design
Colour Temp	
Video Curve	
Audio	
Setup	
DRC & PA gain	

Colour Temp:

Factory	Design	
Colour Temp		Colour Temp
Video Curve		R Gain
Audio		G Gain
Setup		B Gain
DRC & PA gain		R Offset
		G Offset
		B Offset

Video Curve:

Factory	Design	
Colour Temp		
Video Curve		Video Curve
Audio		Backlight
Setup		
DRC & PA gain		

Audio:



Set up:



DRC&PA gain



Note:

Above “Factory/Service OSD Menu” is reference for chassis MTK5653 , please refer to the actual units to determine the appearances.

4. Software Upgrading

Before upgrading, read the following.

First: Upgrade the software.

Second: To clear the EEPROM .

- A Select the item “Clear Unprotected”.
- B Press VOL+ button to clear the EEPROM data.
- C Close the OSD menu after 5 seconds.
- D Restart the TV.

Last: After the operation above all, necessarily, Re-search the channels for the users

4.1 USB Software Upgrading directly

The software can be upgraded by USB Disk.

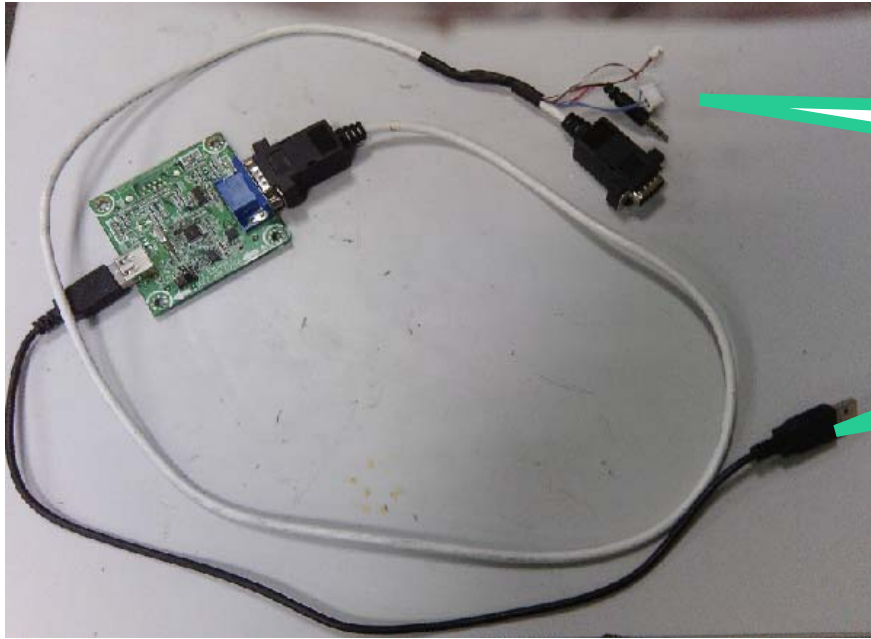
- First, copy the upgrade_loader.pkg file to USB Disk;.
- Second, make sure there is no other .pkg file in the root directory of USB Disk .
- Insert USB Disk to USB port, and then turn on the TV.
- The TV will identify the software and upgrade automatically.

4.2 USB upgrade defeat

If USB upgrading defeat, then need burning the emmc flash program file“ *.bin ”to the flash IC.

Hardware connecting

Connect the unit to your pc with a USB-to-serial port cable. USB port connects to your PC and serial port to the TV’s RS232 port. As following

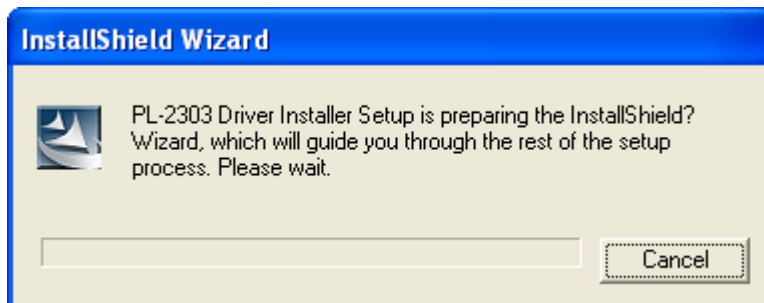


Connect to
the TV RS232
port

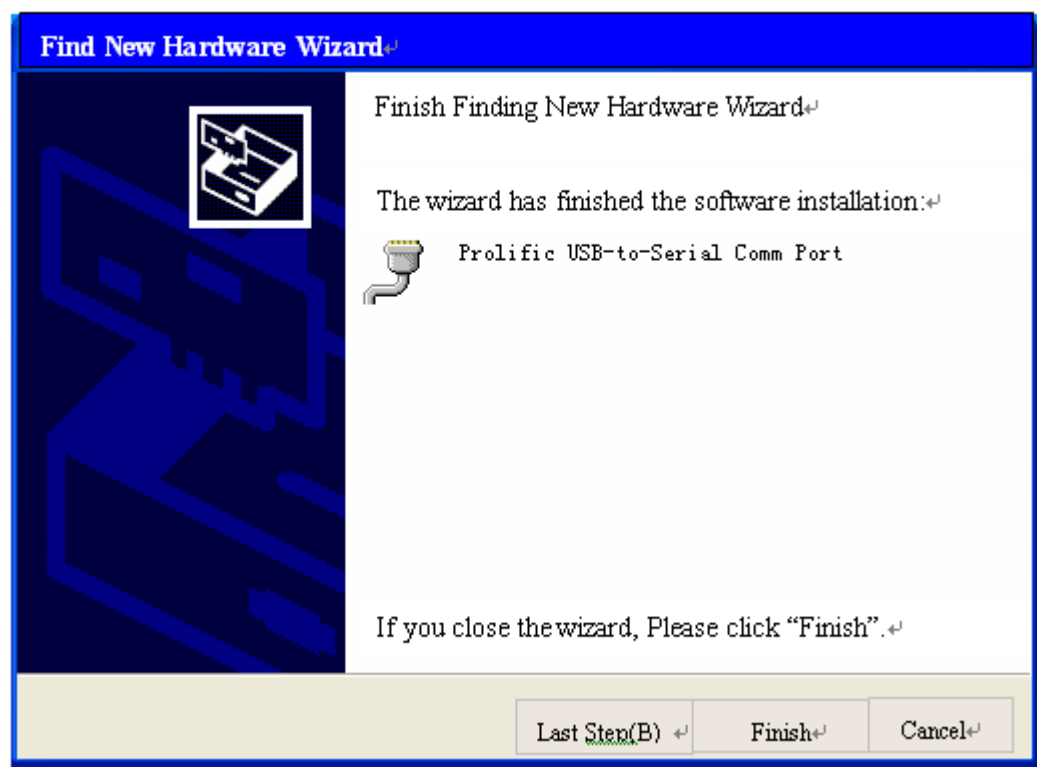
USB Connect to
the PC

4.2.1 Install the driver

Double click the icon  `PL-2303 Driver Installer.exe`, install the driver.

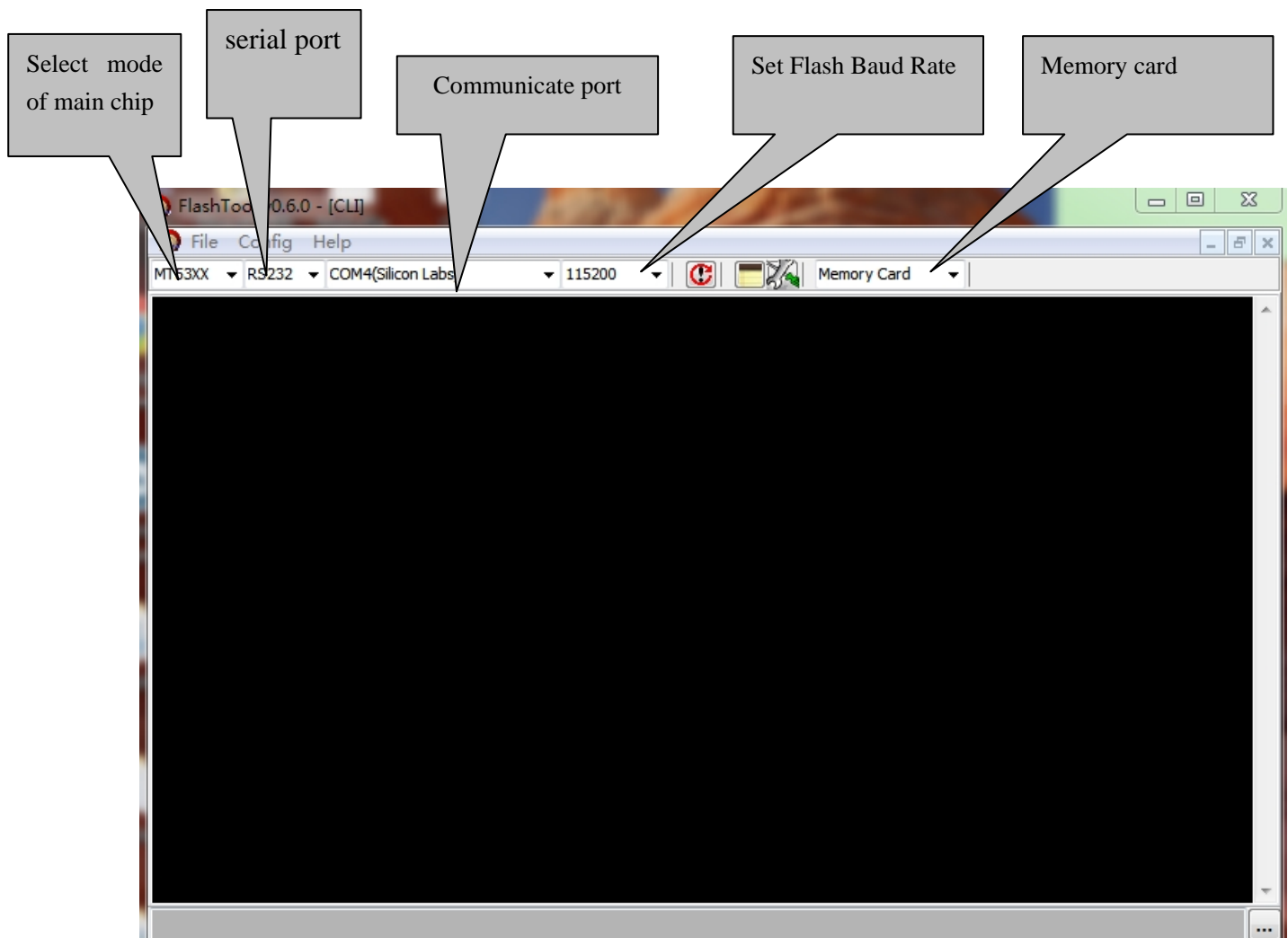


Select the default value, the driver will be installed step by step.



4.3 Upgrading with the FlashTool V0.6.0.exe

1、FlashTool is a green program needing no installation. After Connect the unit to your pc with a USB-to-serial port cable, run FlashTool0.6.0.exe. Please refer to the following steps to set.






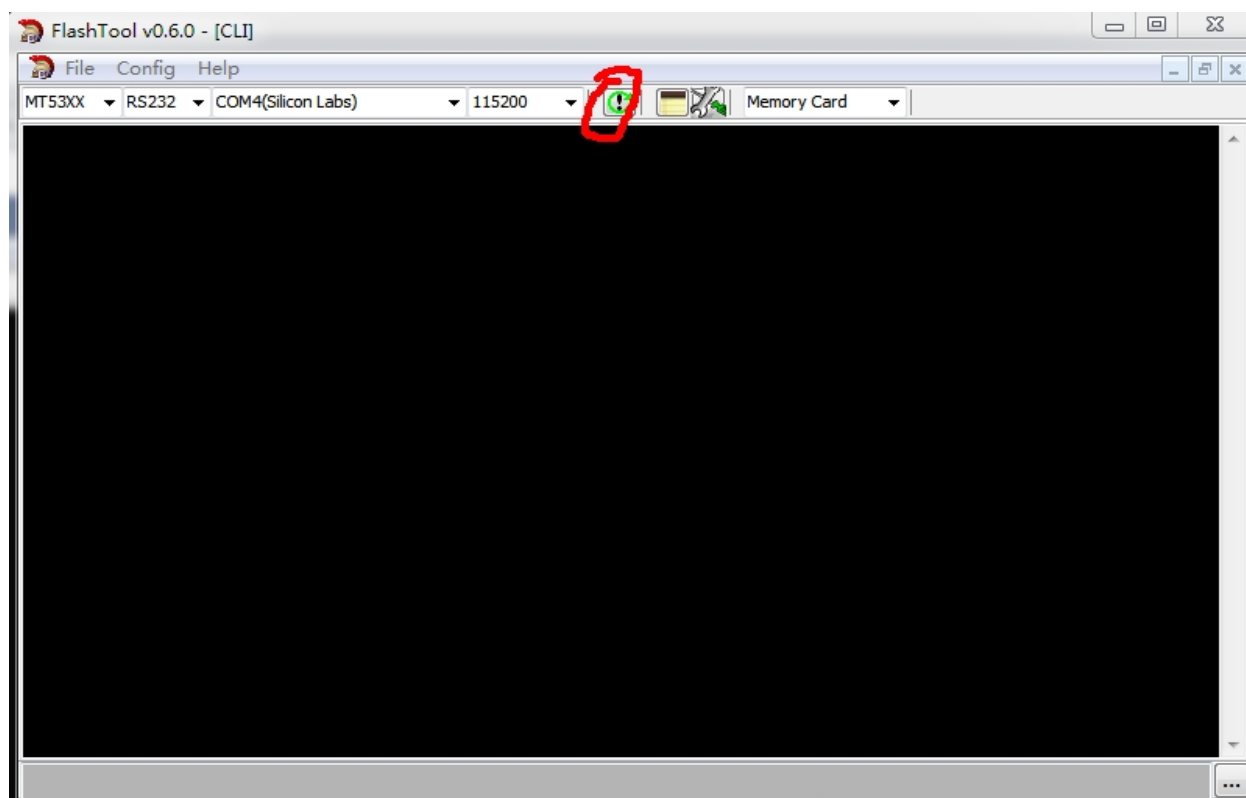
How to choose Communicate port and flash baud rate? See the following instruction..


How to choose Communicate port and flash baud rate? See the following instruction..



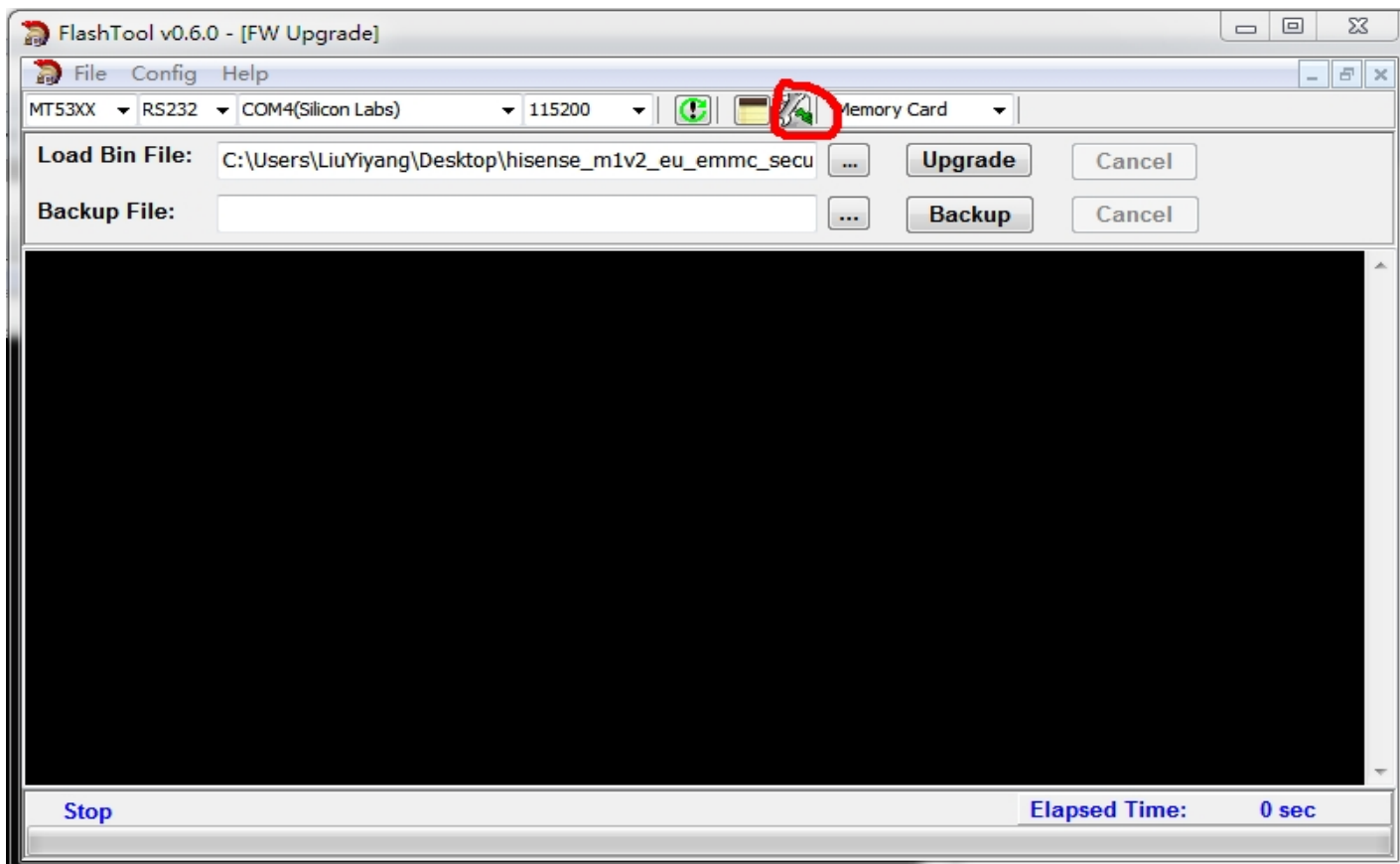
Open “Device Manager” and find which port is connected with the TV. In above picture, COM4 is connected to the TV, so, select “COM4” and if COM6 is connected to the TV, so select “COM6”. Select the right baud rate according to chip model. For this unit(chip model is MT5651), select 115200.

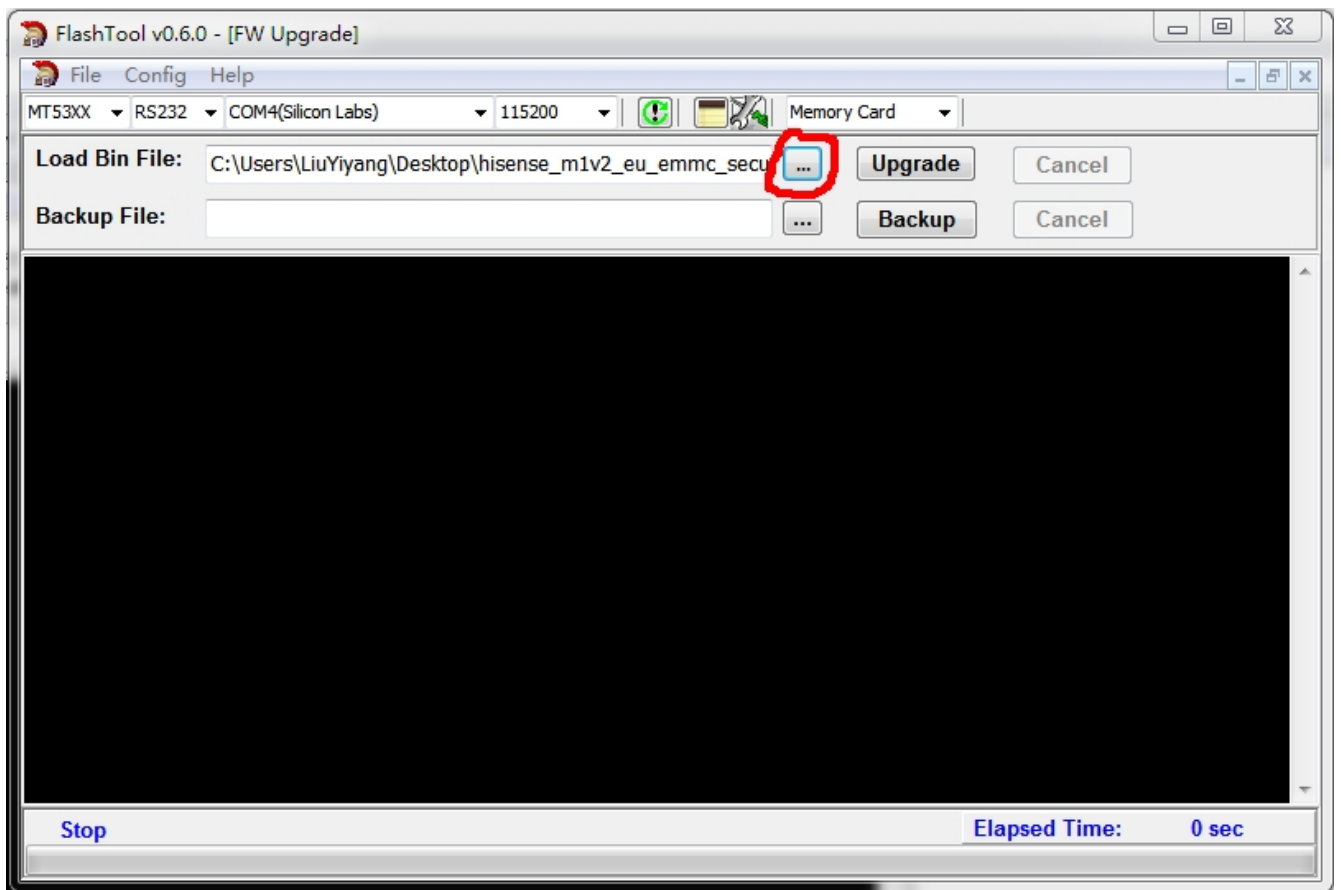
2、 Click  to connect, if connect successfully then button  from red turn green .



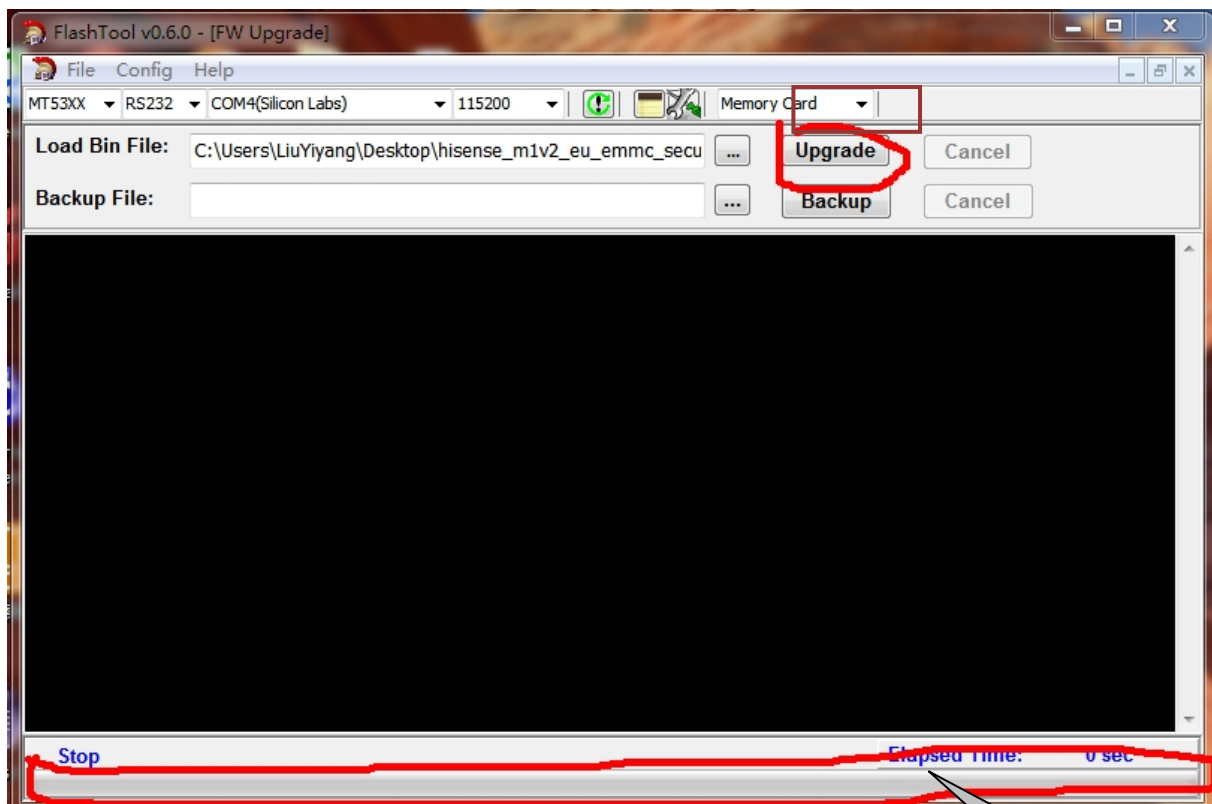
Click , bounce the following dialog box. Load Bin File: find the upgrading program file, and select it. for example: hisense_m1v2_EU_emmc_secure_emmcboot.bin.

Press “Upgrade” button and start upgrading., if update defeat, try again.





Last .click upgrade button to start upgrade.



Start upgrade
PROCESS.....

4.4 Software update

Software update comprises three ways.

USB、Internet and Auto Upgrade

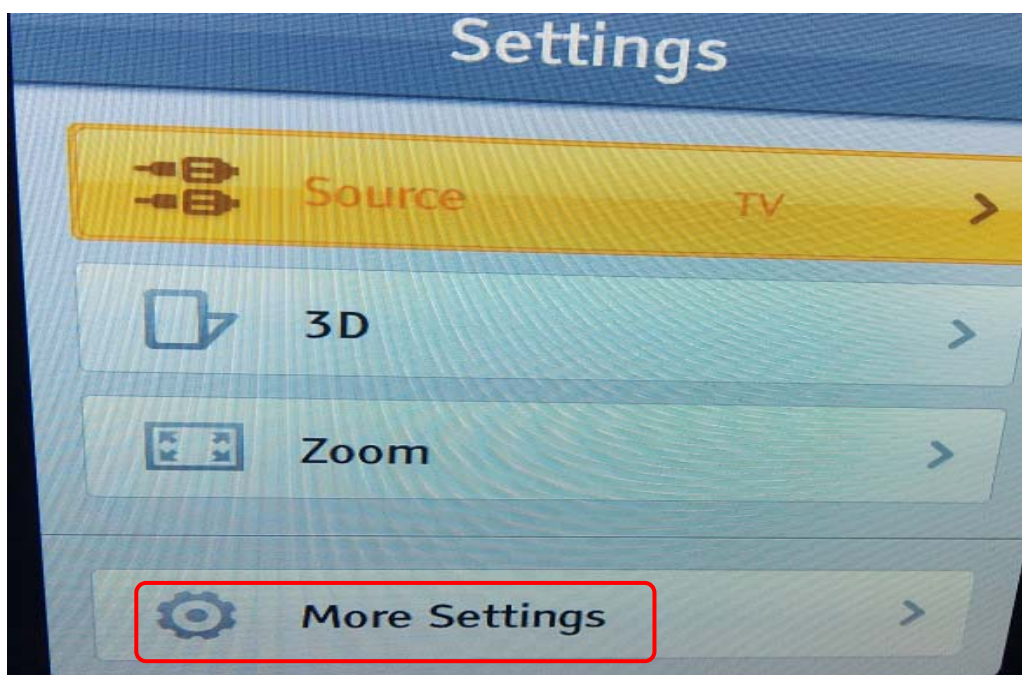
1、 USB update

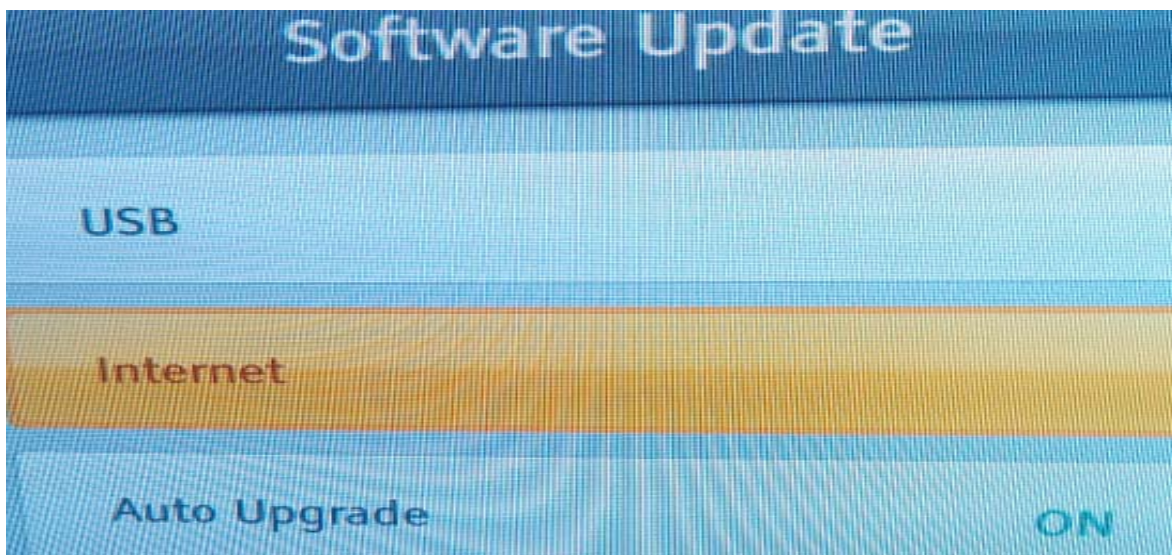
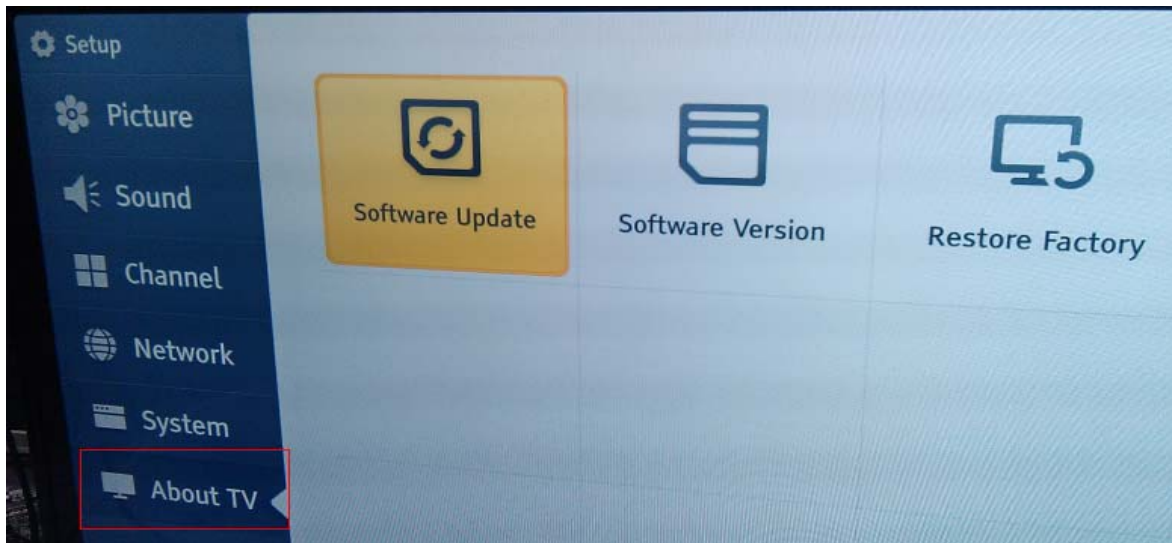
- First, copy the upgrade_loader.pkg file to USB Disk;.
- Second, make sure there is no other .pkg file in the root directory of USB Disk .
- Insert USB Disk to USB port, About TV->**Software Update** select **USB**.
- The TV will identify the software and upgrade automatically.

2、 Internet update

First, TV connects with internet.

Diagram figures as following:

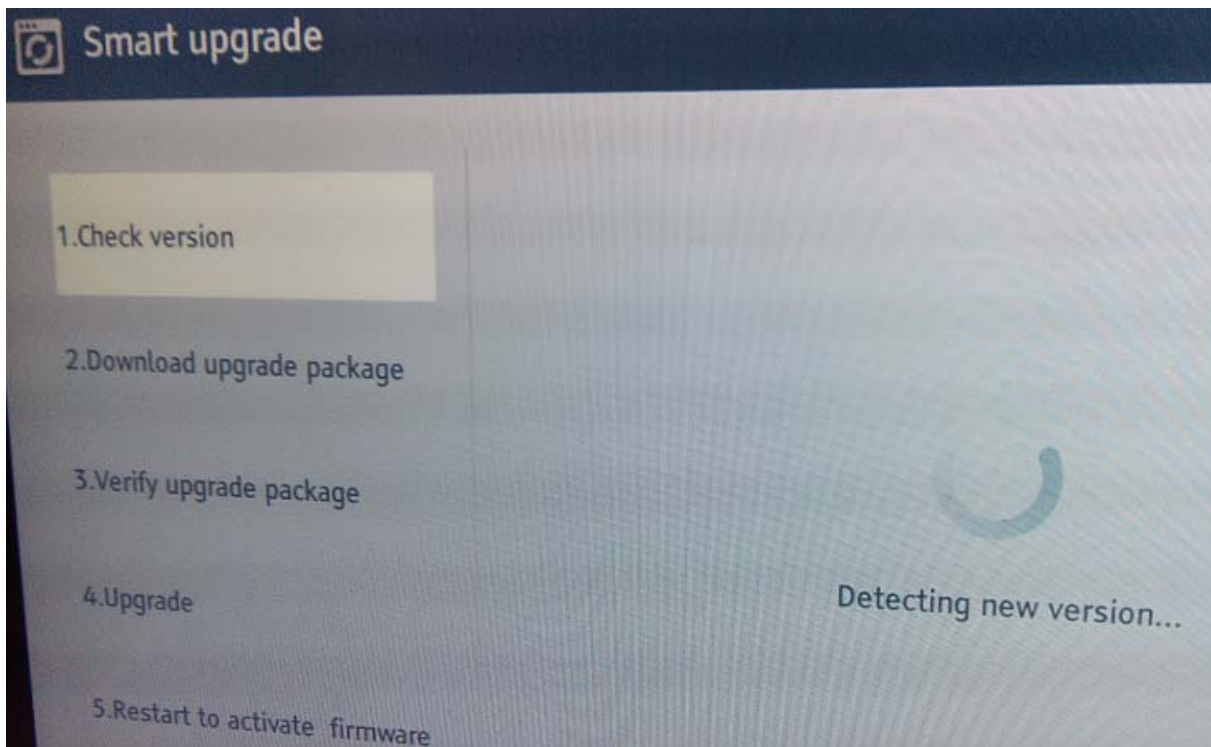




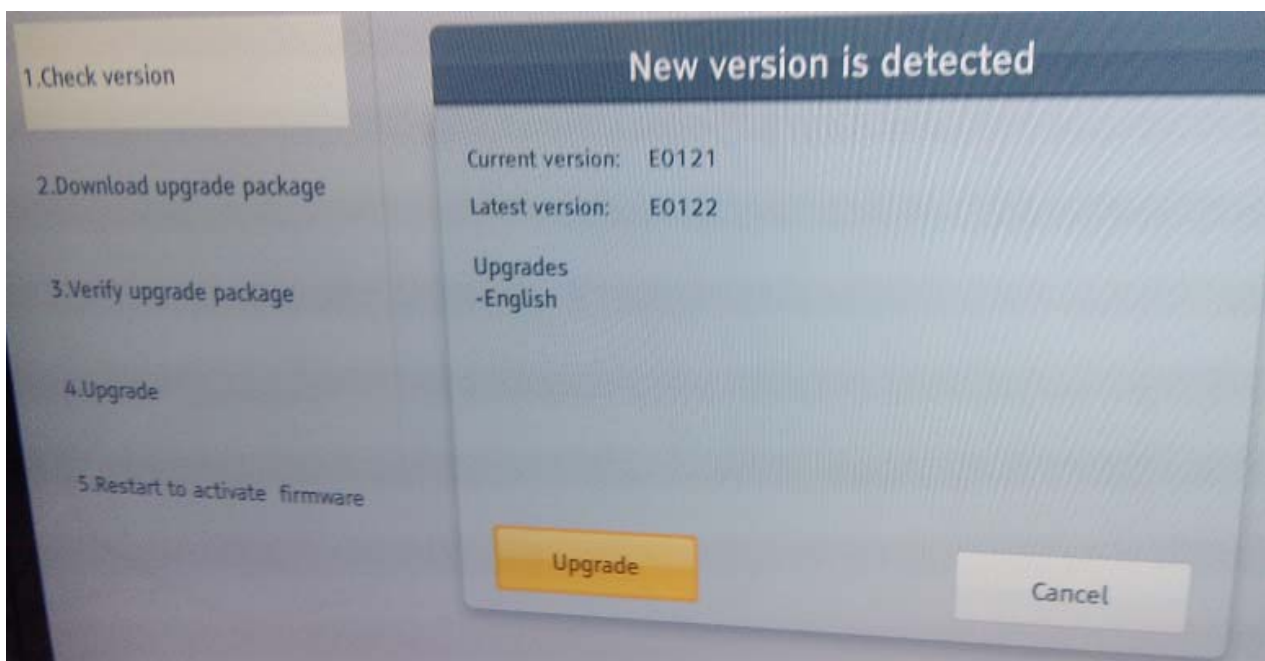
Press **ok** button, then appear “Smart upgrade” interface. Comprise five parts.

It can process step by step. See next processing figures. Please.

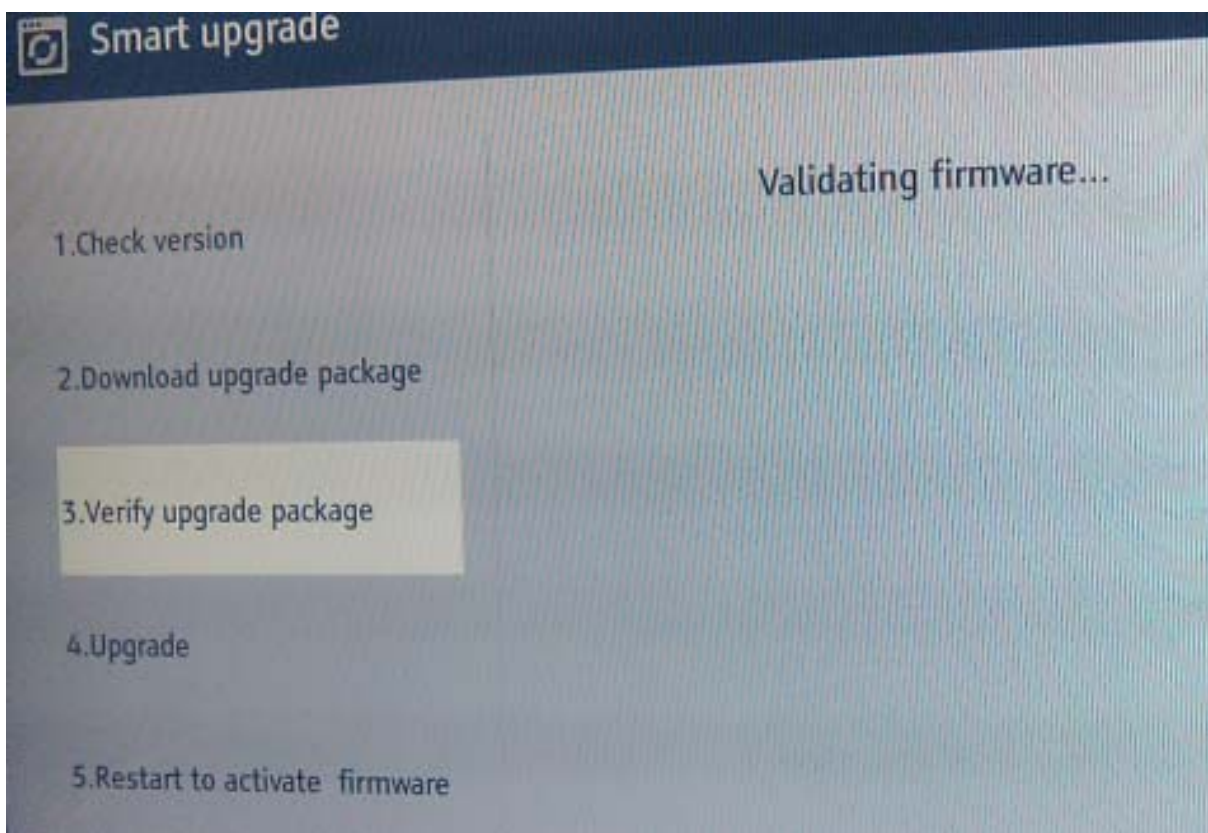
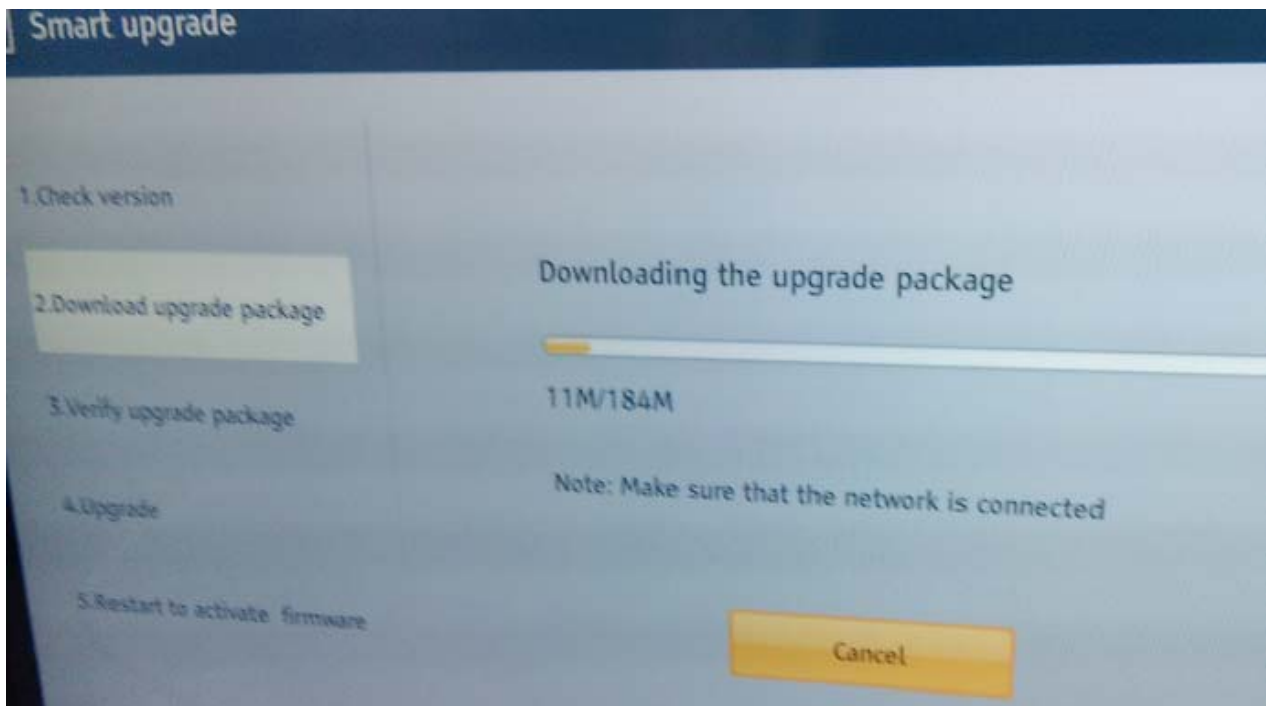
- 1、 Check Version
- 2、 Download upgrade package
- 3、 Verify upgrade package
- 4、 Upgrade
- 5、 Restart active firmware

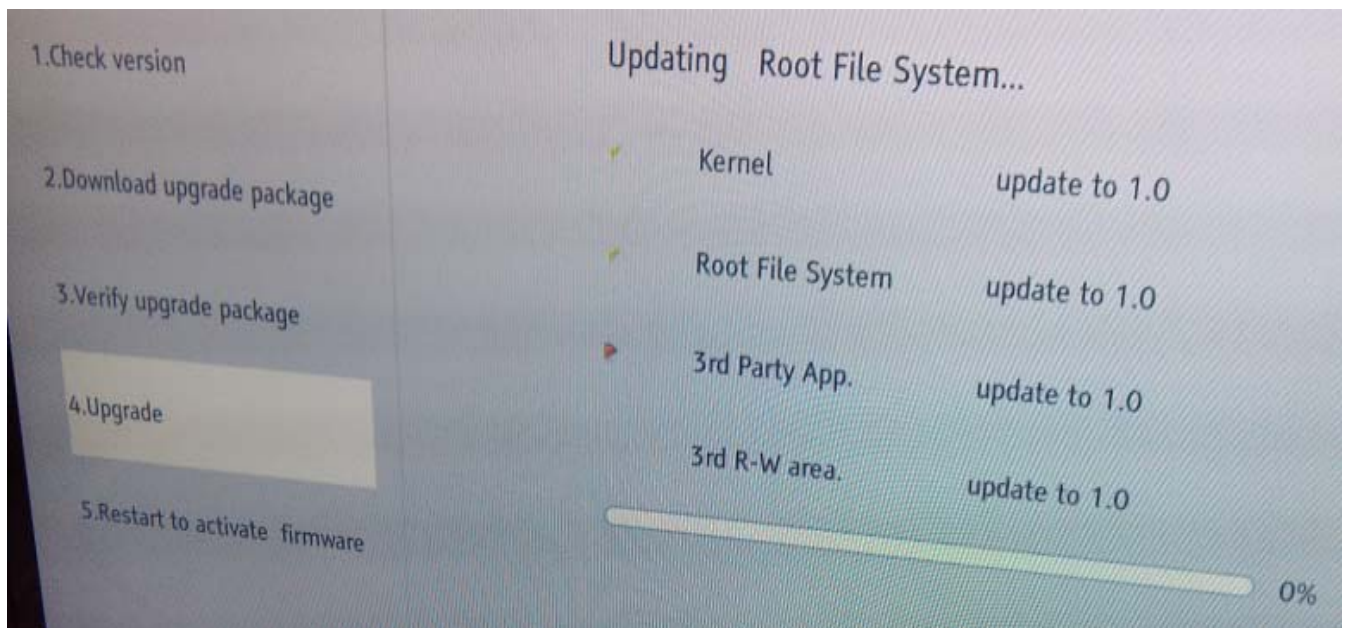
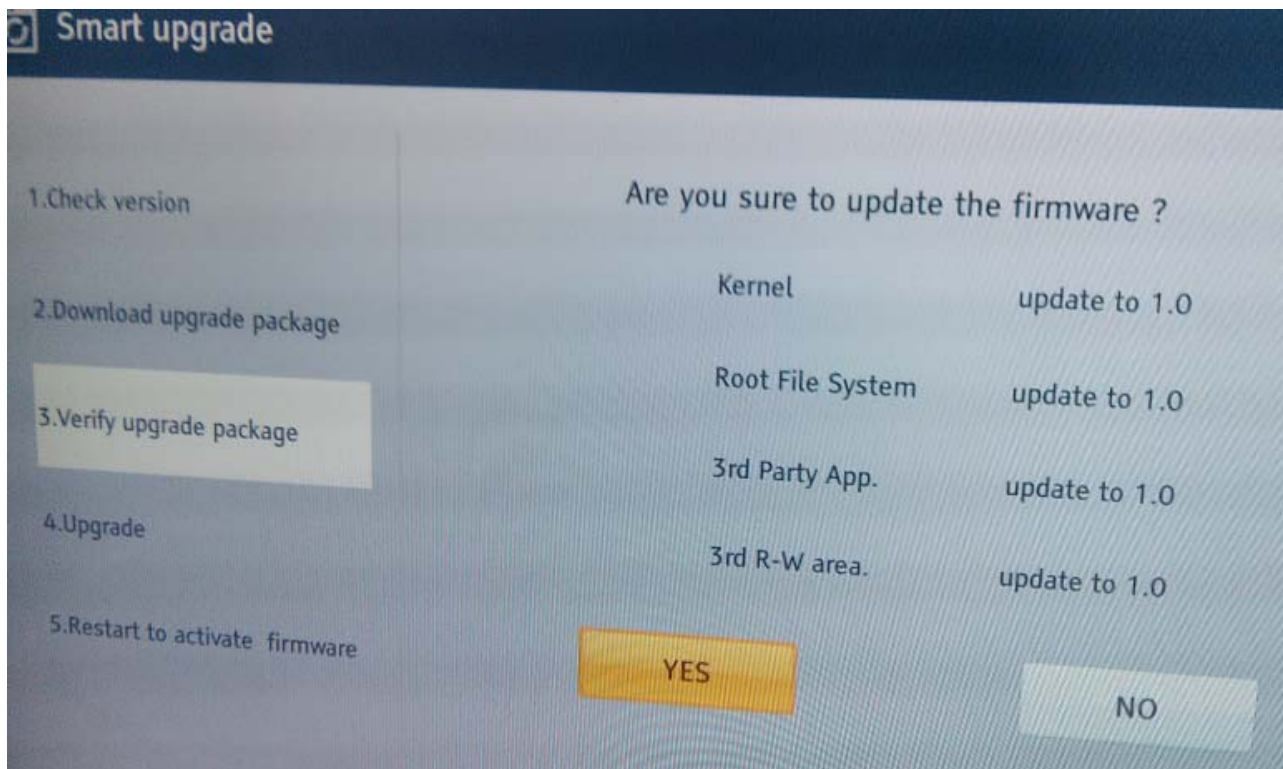


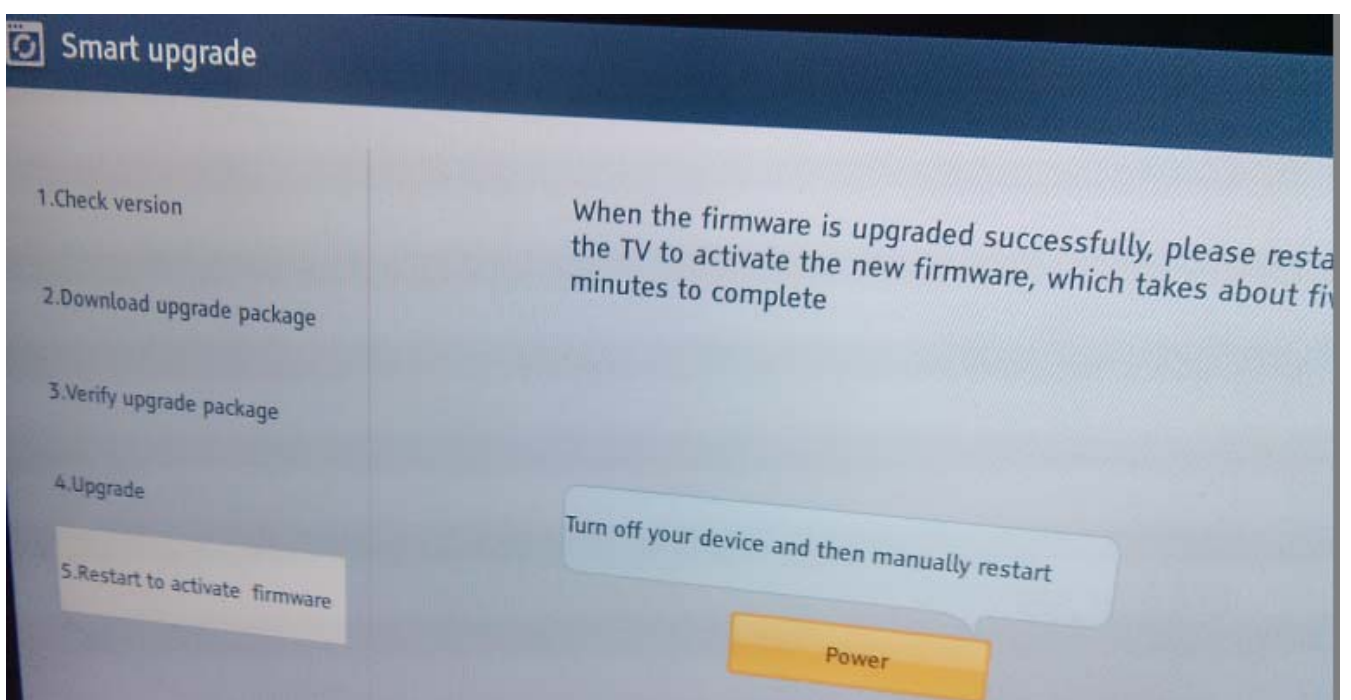
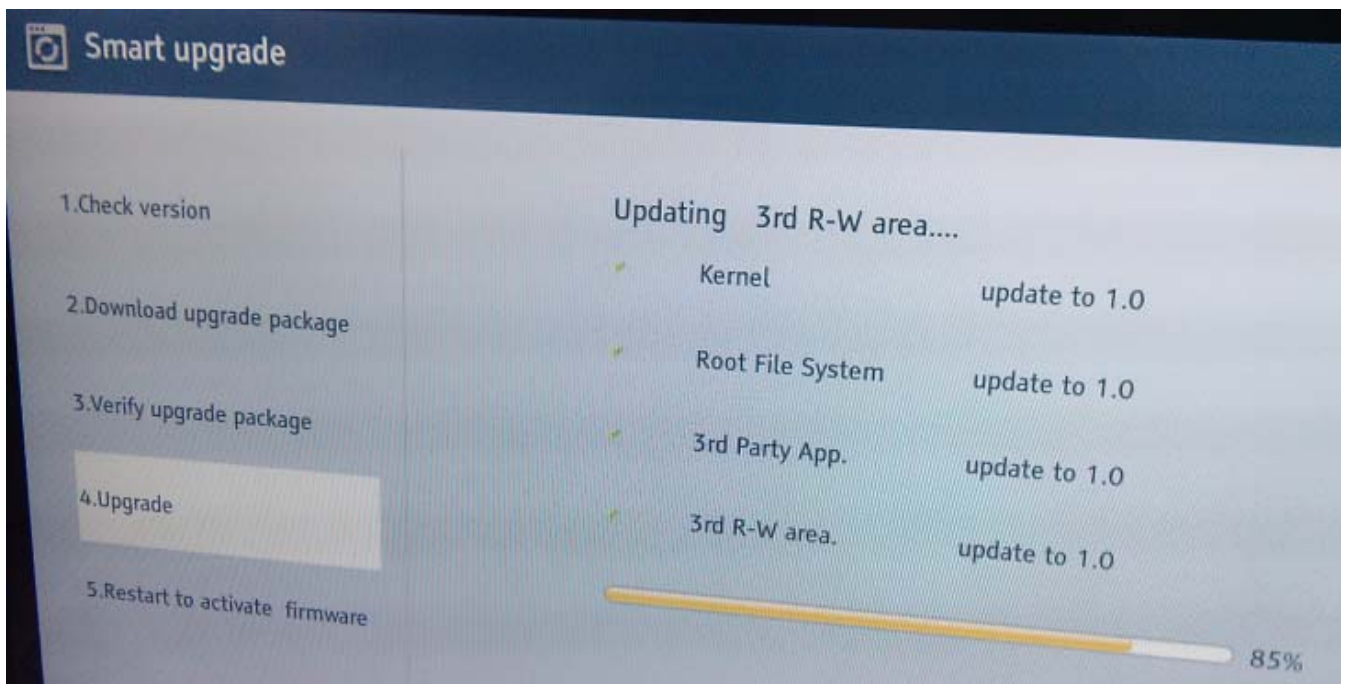
next



next







3、 Auto Upgrade

First, TV connects with internet.

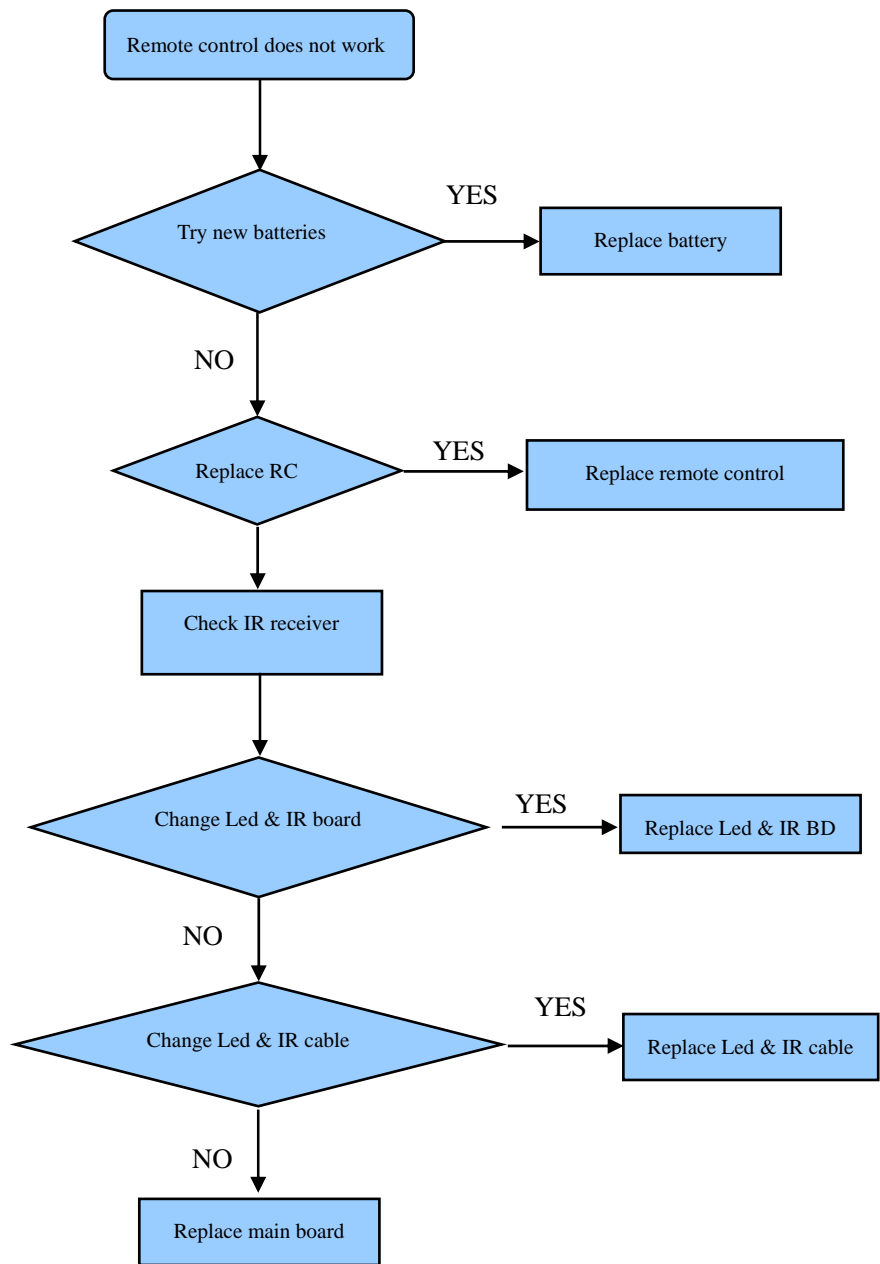
Second, according the indication,TV can automatically upgrade.

5. Trouble shooting

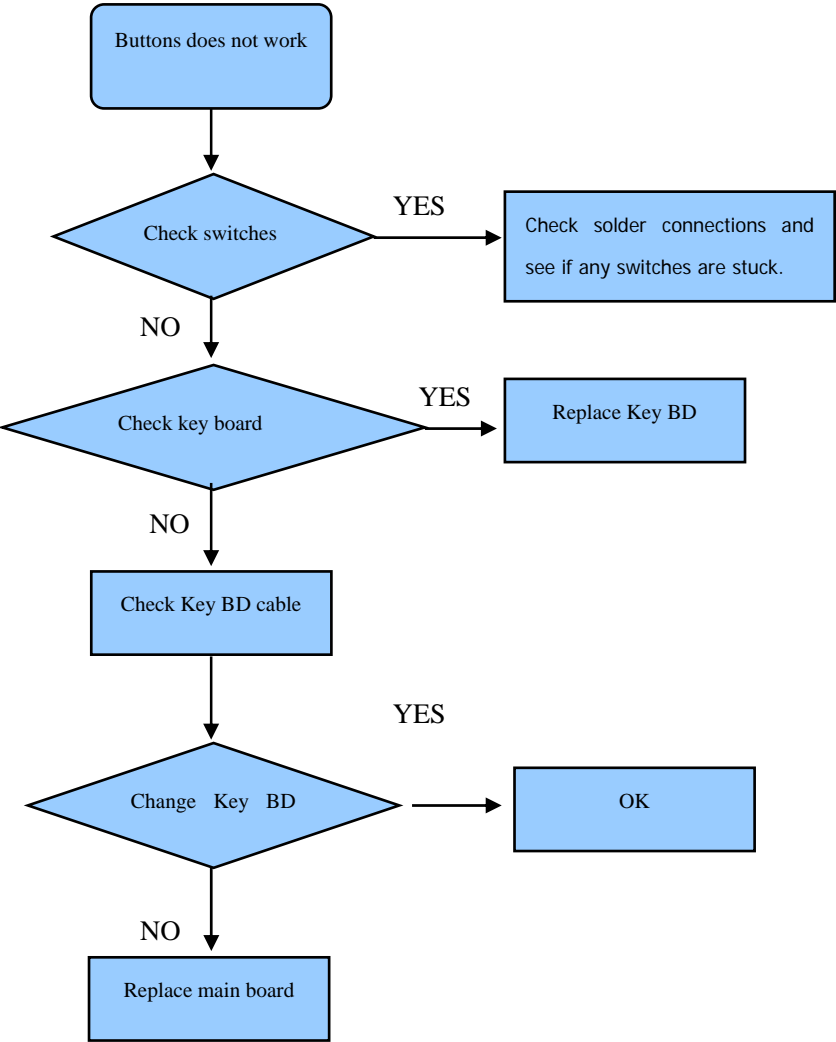
When there is something wrong with your TV, you can try turning off the TV and then restart it. You can also operate according to the follow chart. If the problems still can't be solved, please contact the profession technician.

No sound or picture	<ol style="list-style-type: none">1. Check if the power line is in the outlet and if it has electricity.2. Check if you have pressed Power button on the TV or Power button on the remote control3. Check the setting of picture brightness and contrast.4. Check the volume.
The picture is normal but there is no sound	<ol style="list-style-type: none">1. Check the volume.2. Check if Mute mode is set.
No picture and white or black picture	<ol style="list-style-type: none">1. Adjust Picture Setting.2. Check Color System.
The sound and picture are interfered	<ol style="list-style-type: none">1 Try to find the appliance affecting TV set, and move it far away from the TV set.2. Try to insert the power plug of the TV set into another outlet.
Unclear picture or picture with snow	<ol style="list-style-type: none">1. Check the direction, position and connection of your antenna.2. Adjust the direction of your antenna or reset or fine tune the channel
The remote control does not work	<ol style="list-style-type: none">1. Change the batteries in the remote control.2. Clean the upper side of the remote control (radiating window)3. Check the contacting points of the batteries.4. Check if there is obstruction between the remote control and the monitor.5. Check if the batteries are correctly installed.
H/V strip or the picture shaking	Check if there is an interfering source nearby, such as appliance or electric tools.
The cabinet of the TV makes "Click" sound	makes "Click" sound"Sometimes the room temperature change can cause the television cabinet to inflate or contra, which makes this sound. This does not mean the TV breaks down.

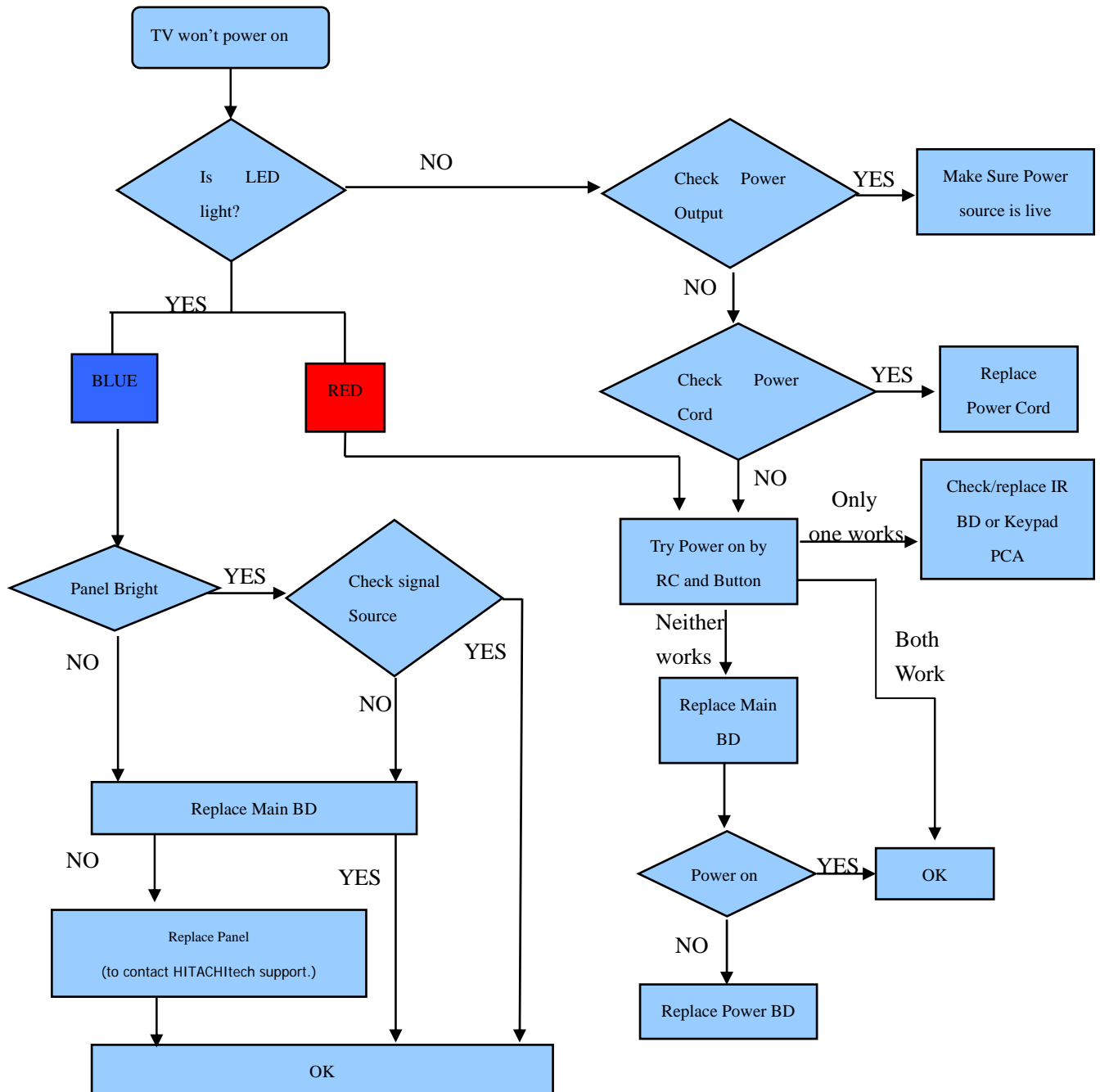
5.1 Troubleshooting for Remote Control



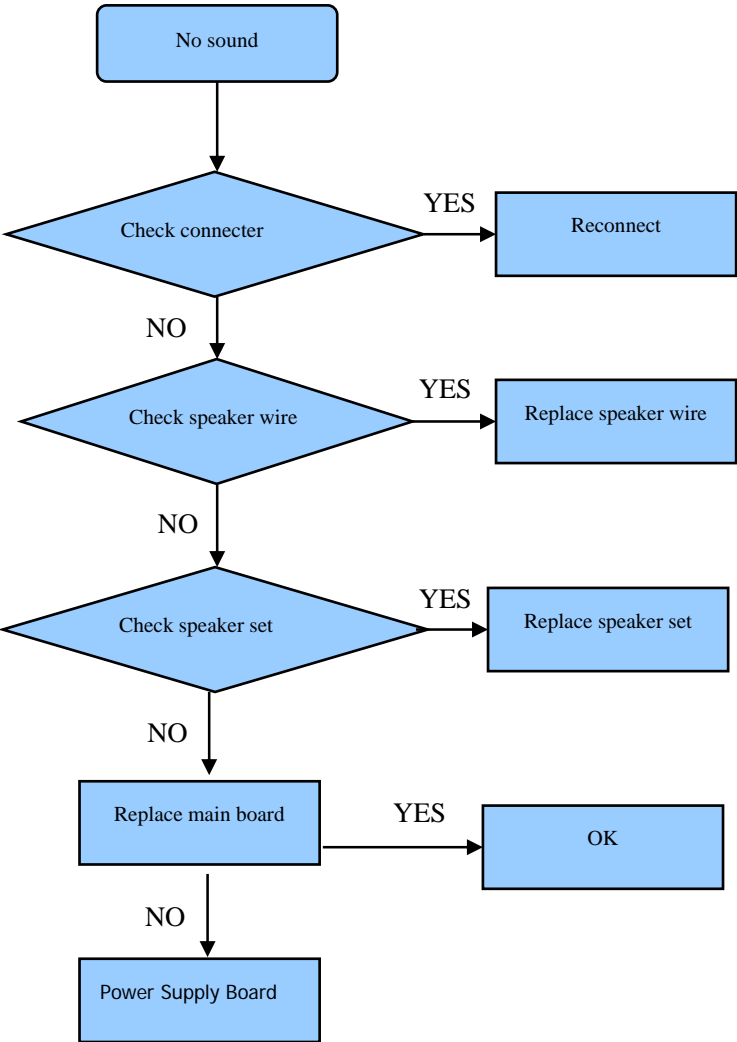
5.2 Troubleshooting for Function Key



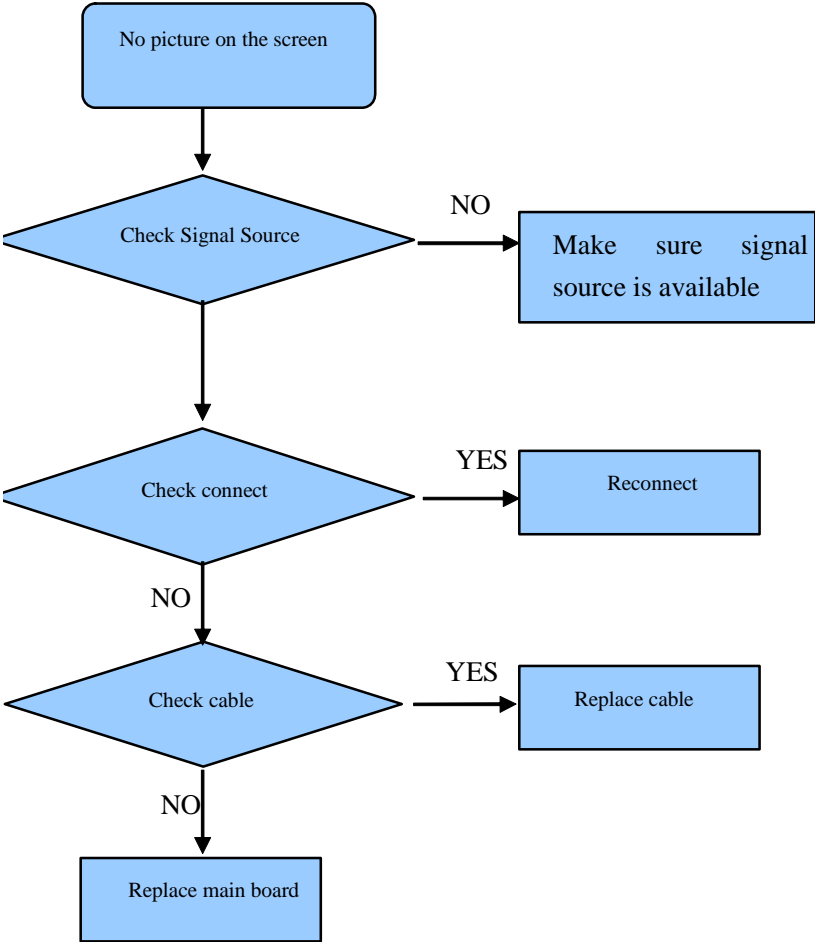
5.3 TV won't Power On



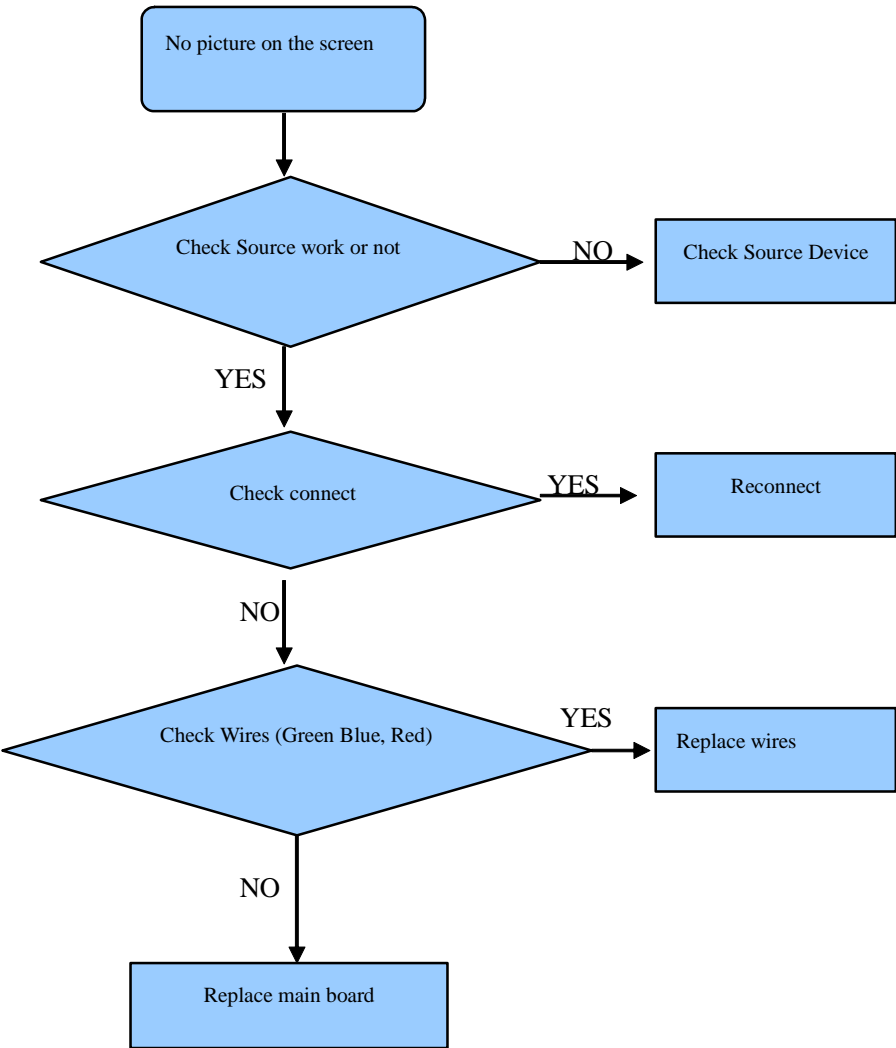
5.4 Troubleshooting for Audio



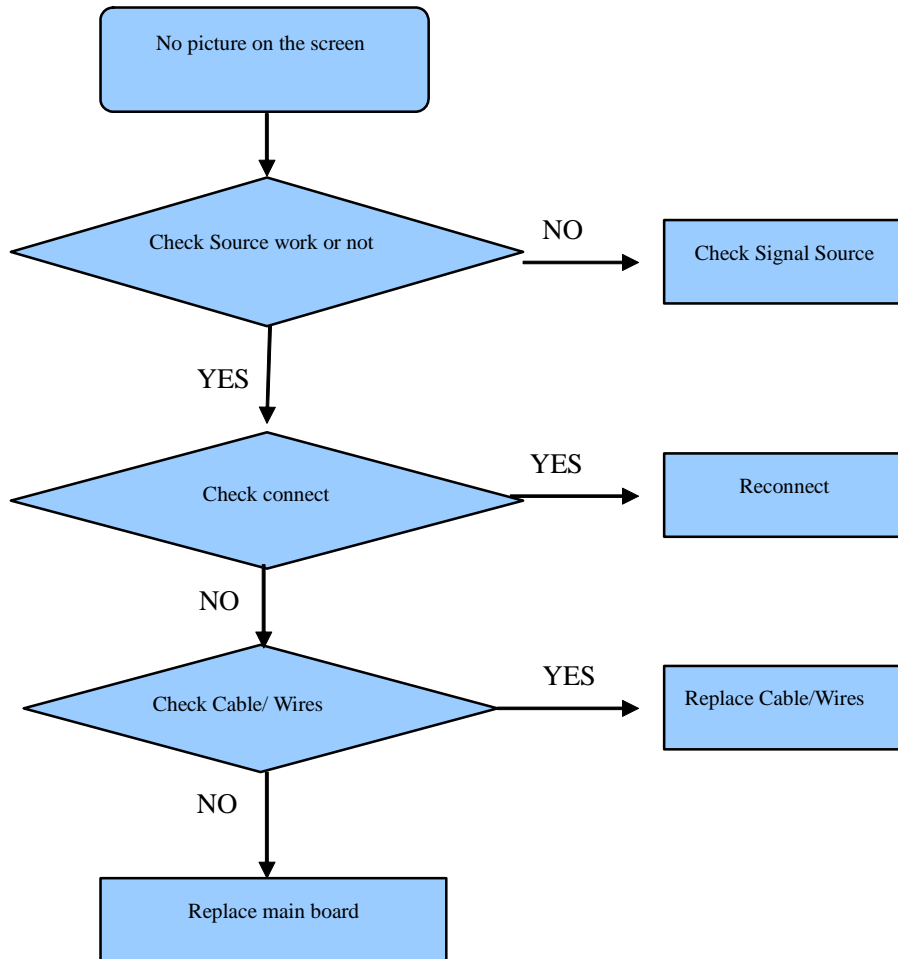
5.5 Troubleshooting for TV/VGA/HDMI input



5.6 Troubleshooting for YPbPr input



5.7 Troubleshooting for Video input

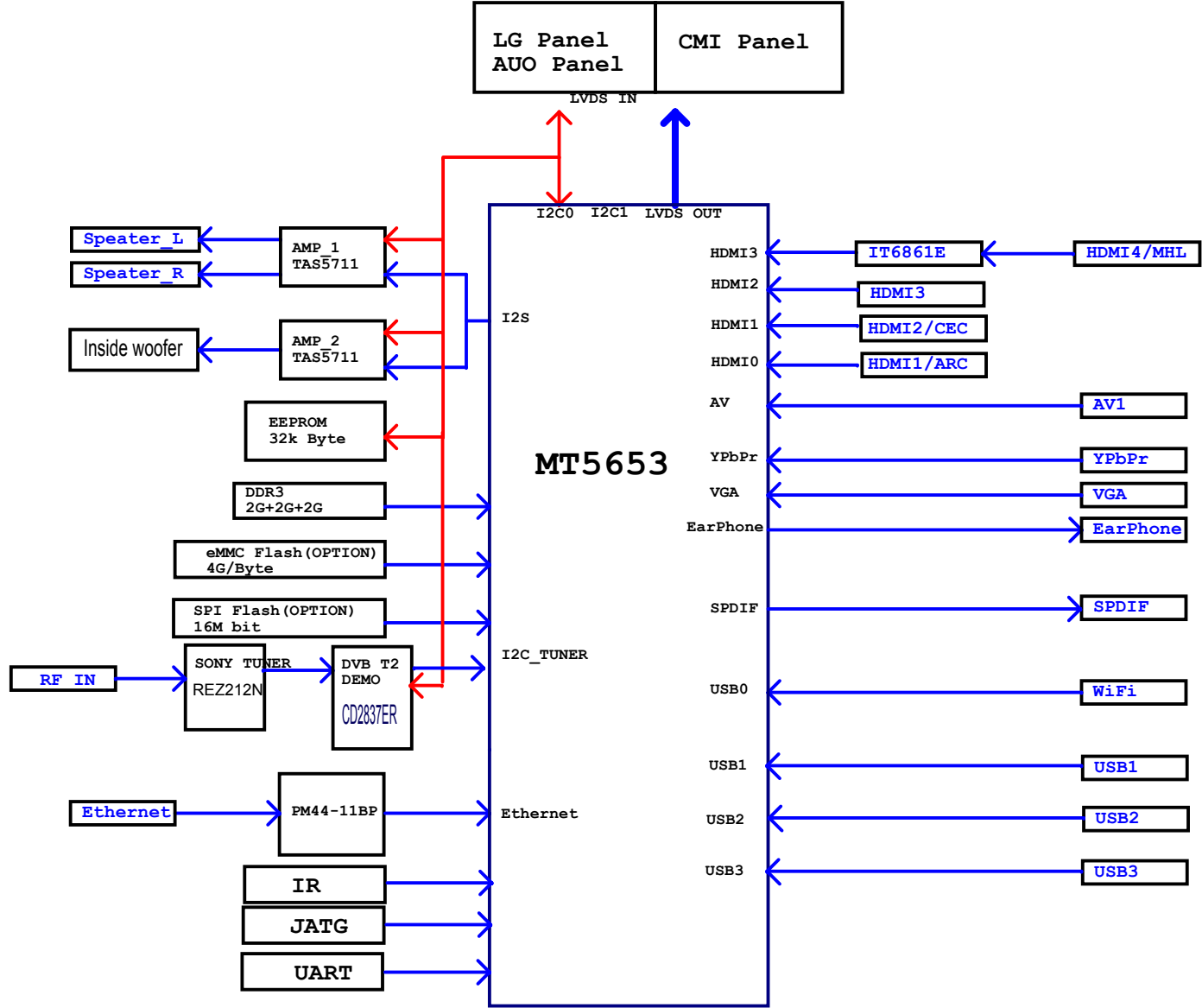


6. Signals Block Diagram and power assign:

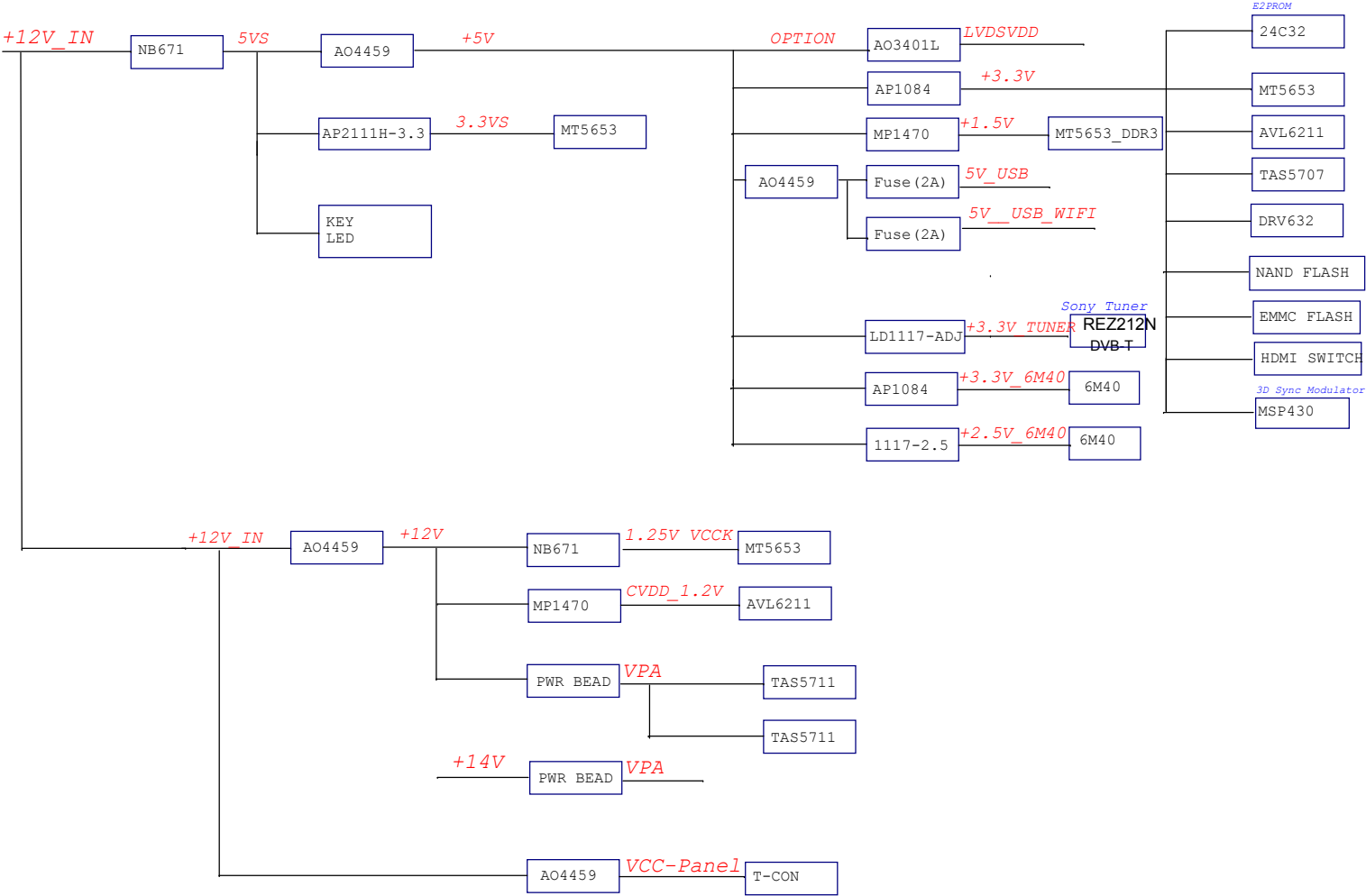
7. Schematic circuit diagram

8. Explode View

Main board:5880 signal block diagram

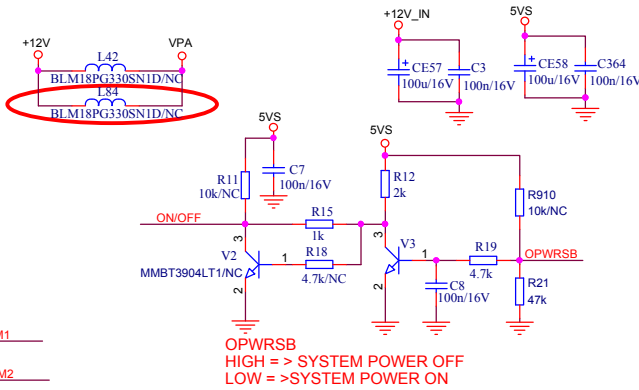
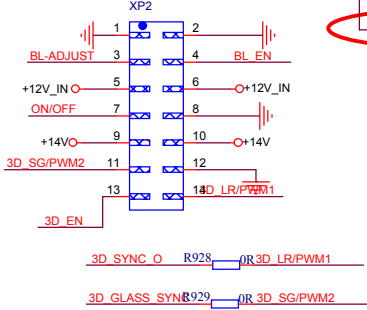


Main board:5880 power assign

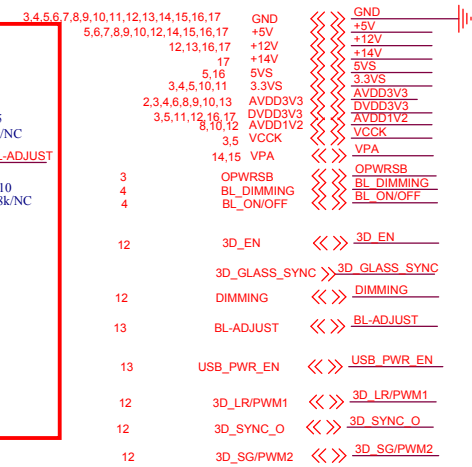
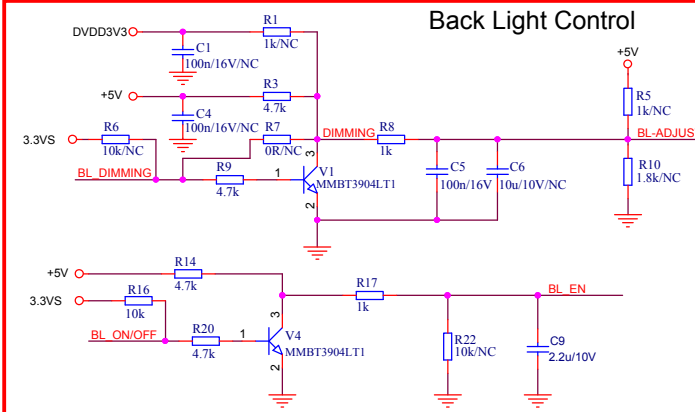


MAIN POWER

兼容2X6Pin 双排插座

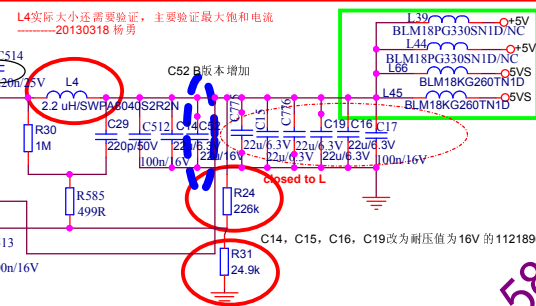


Back Light Control

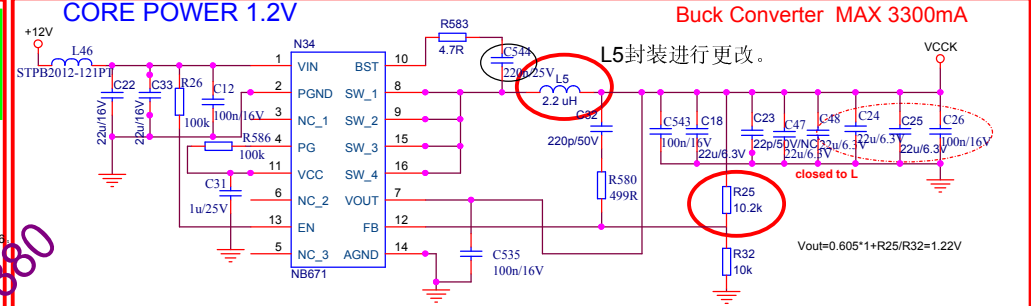


12V-->5VS

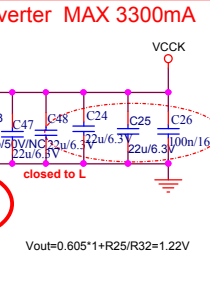
Buck Converter 6A



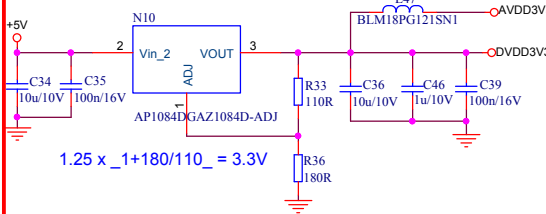
CORE POWER 1.2V



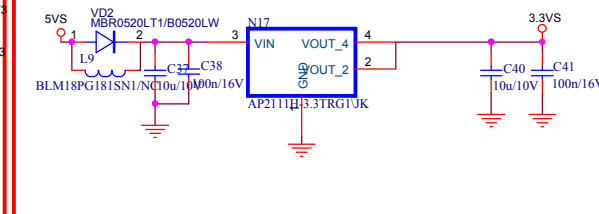
Buck Converter MAX 3300mA



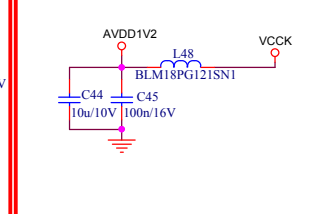
DIGITAL POWER DVDD3V3



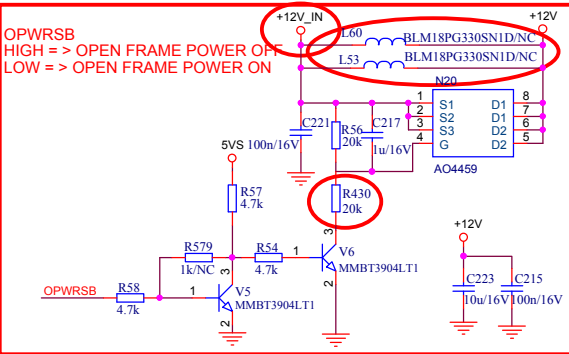
STANDBY POWER 3V3SB



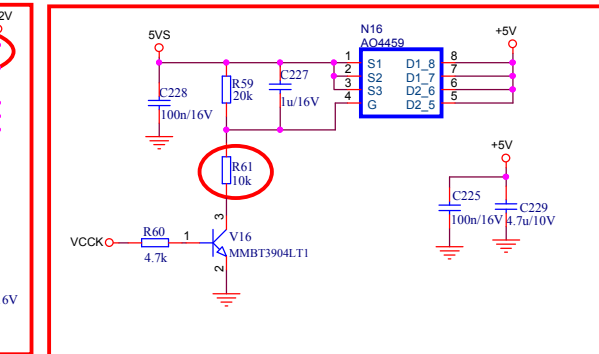
ANALOG POWER AVDD1V2



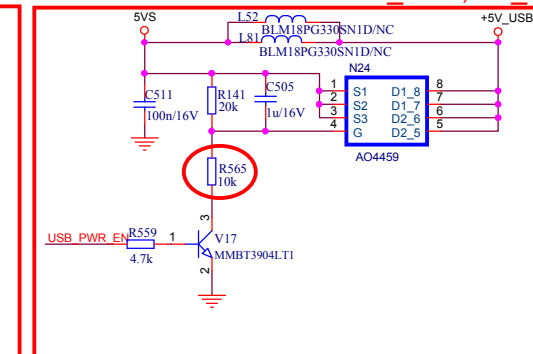
POWER CONTROL +12V



POWER CONTROL +5V



POWER CONTROL +5V_USB, 5V_CI



Hisense Electric Co.,LTD

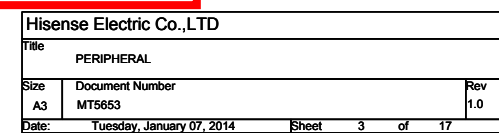
POWER AND INVERTOR

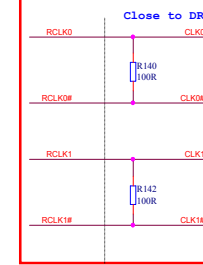
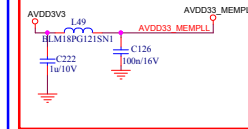
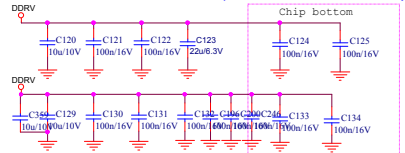
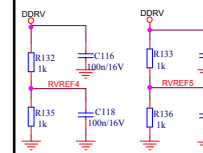
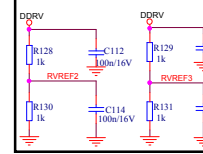
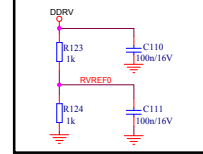
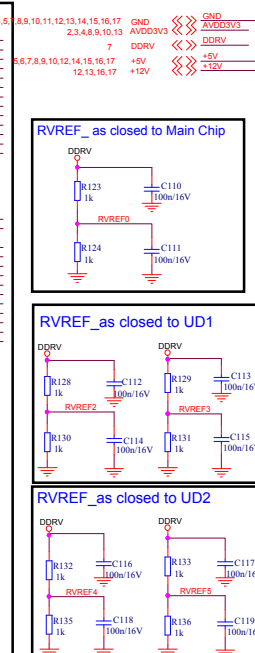
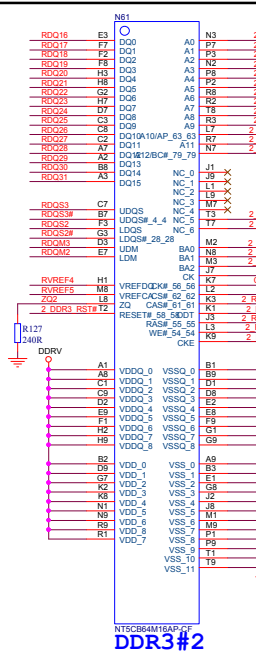
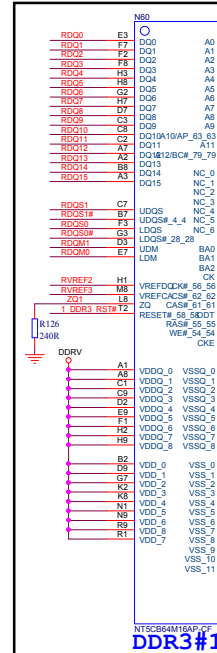
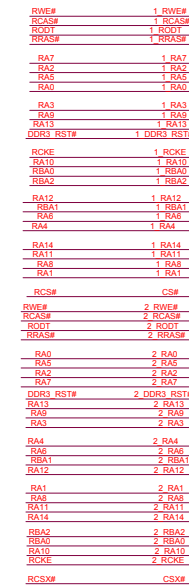
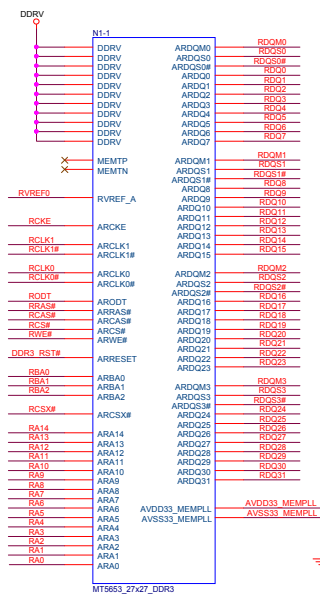
Size A3 Document Number MT5653

Date: Tuesday, January 07, 2014

Rev 1.0

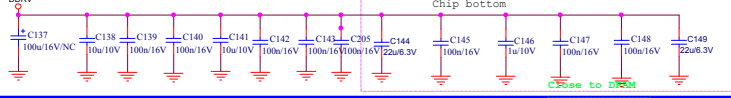
Sheet 2 of 17



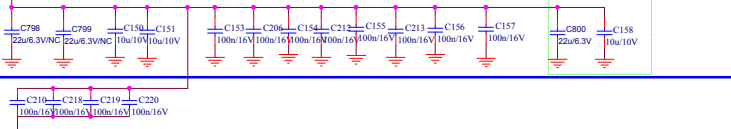


MB:5880

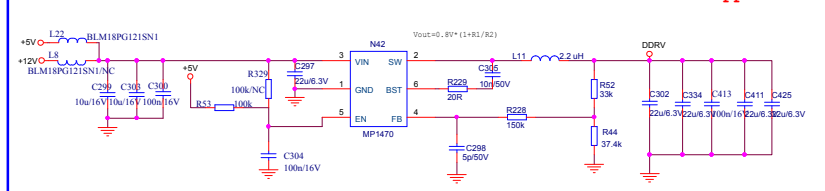
CAPs for DRAM IO Power (Beneath the DDR#



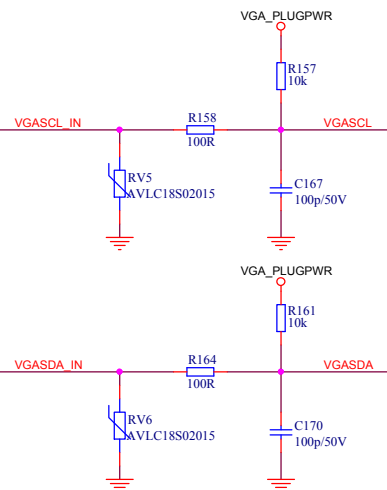
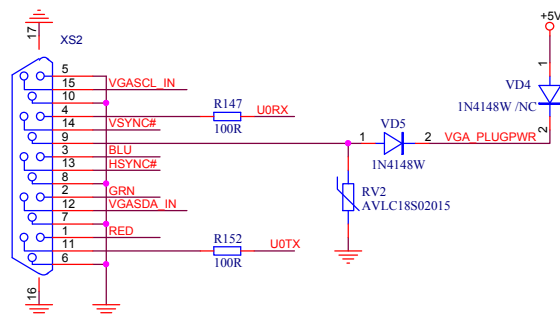
CAPs for DRAM IO Power (Beneath the DDR#1



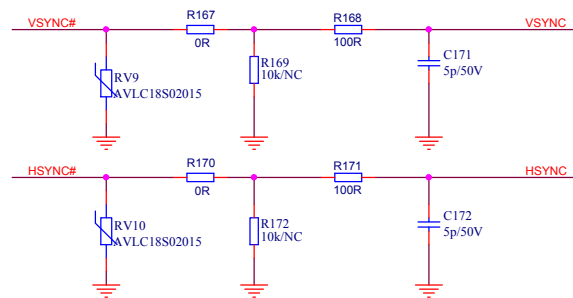
DDR POWER

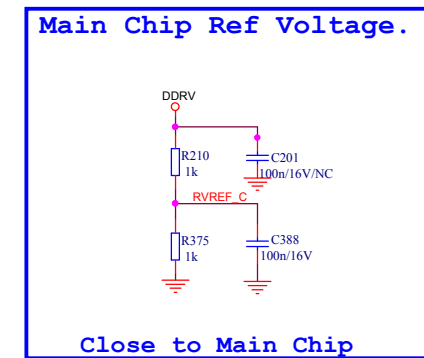
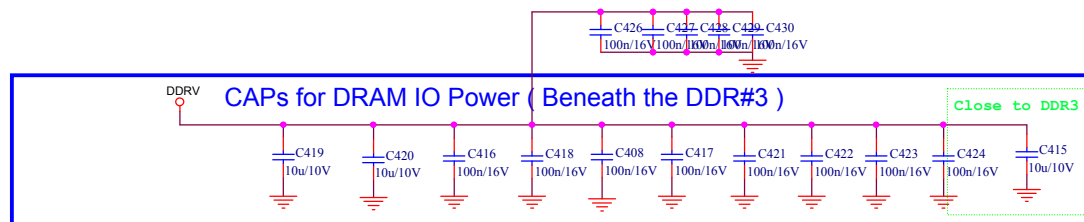
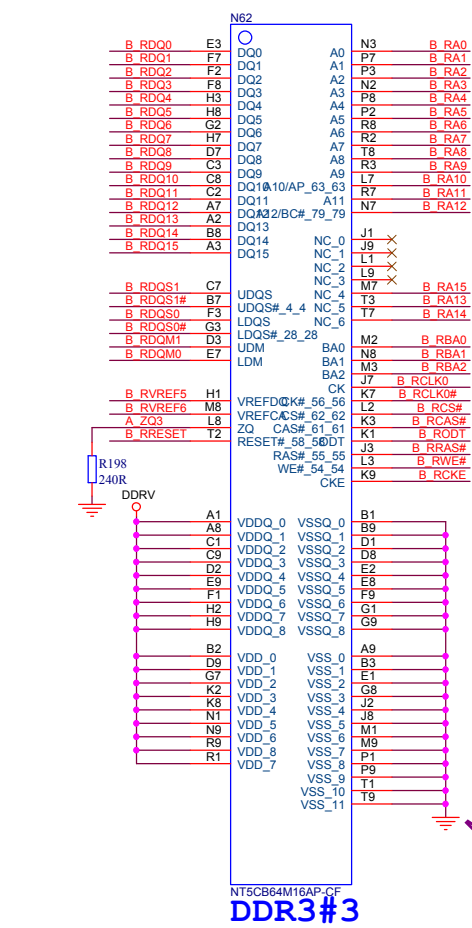


VGA INPUT



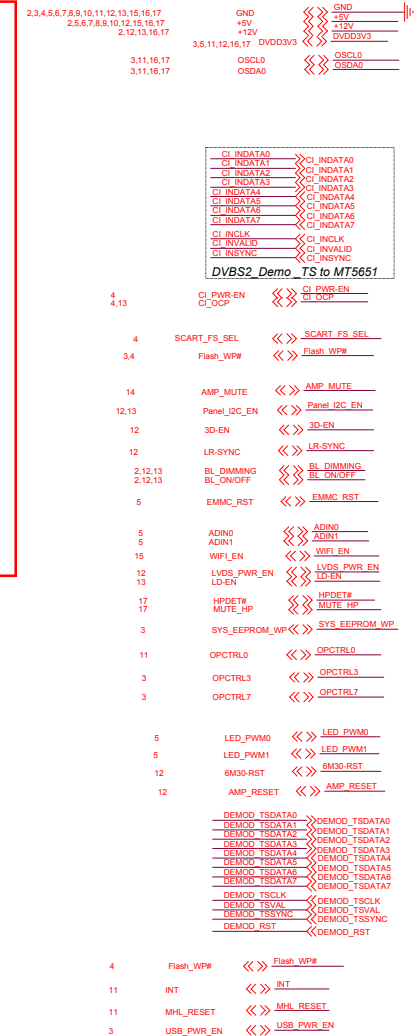
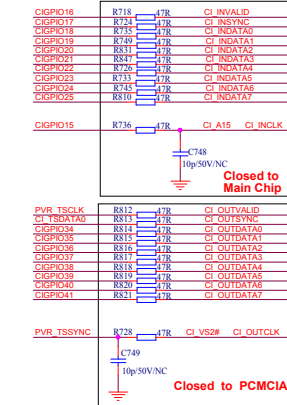
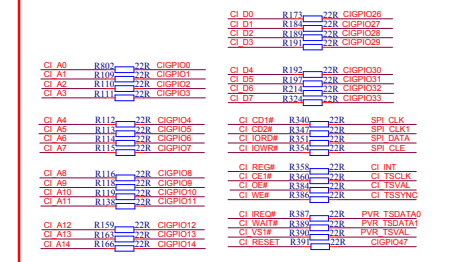
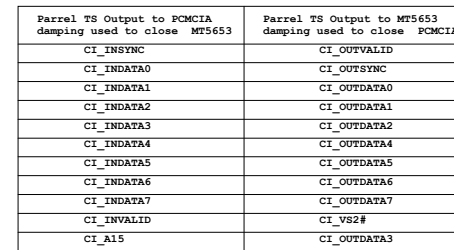
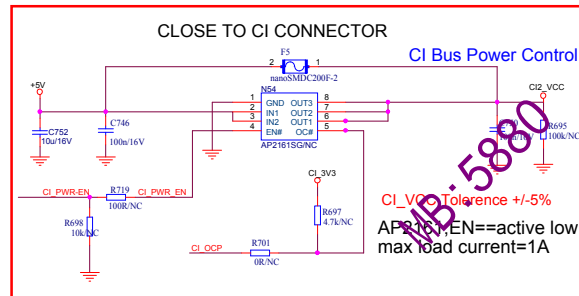
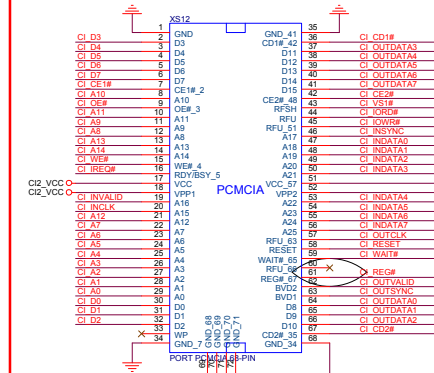
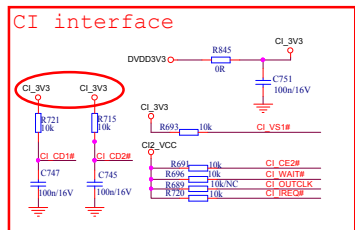
VGA SYNC SLICER

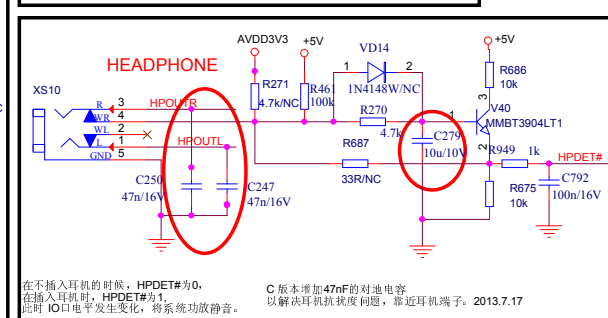
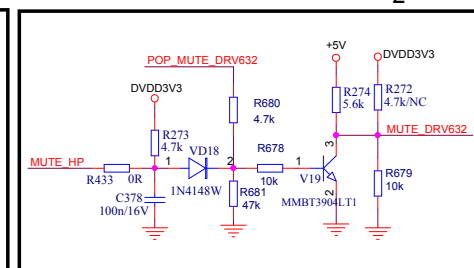
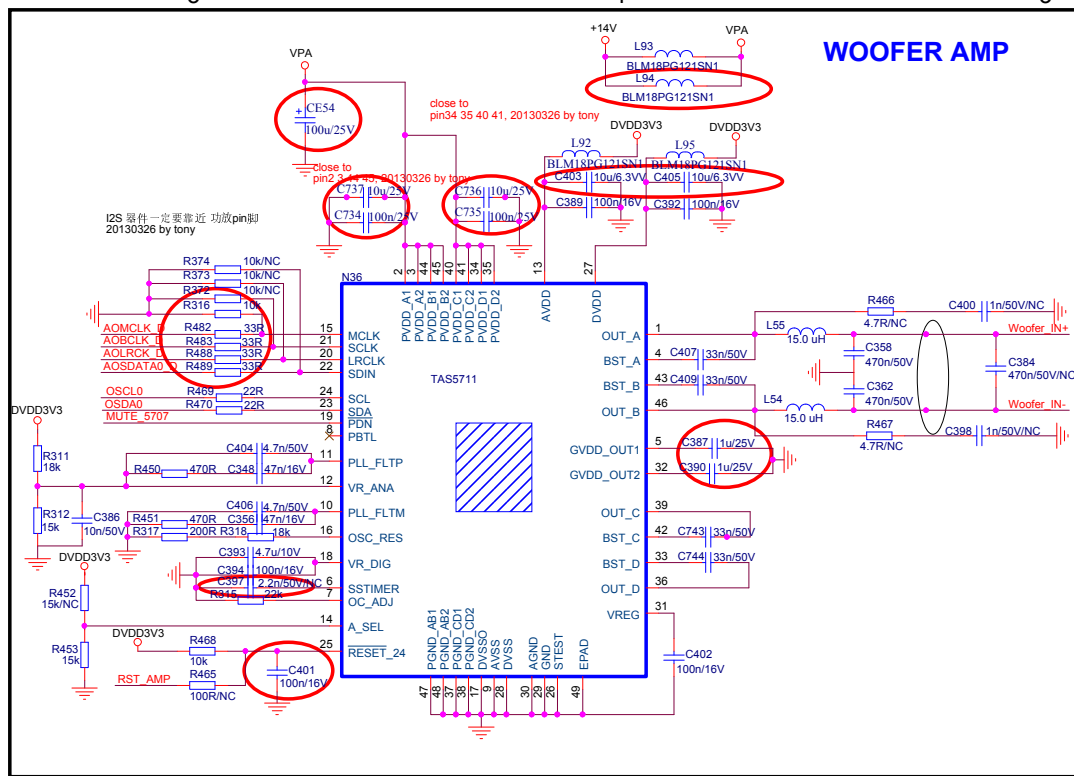




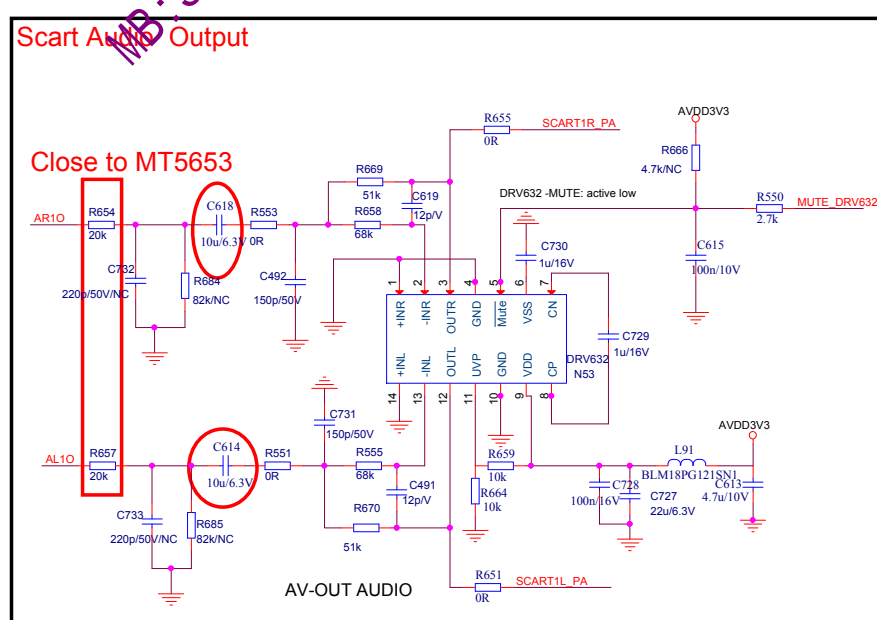
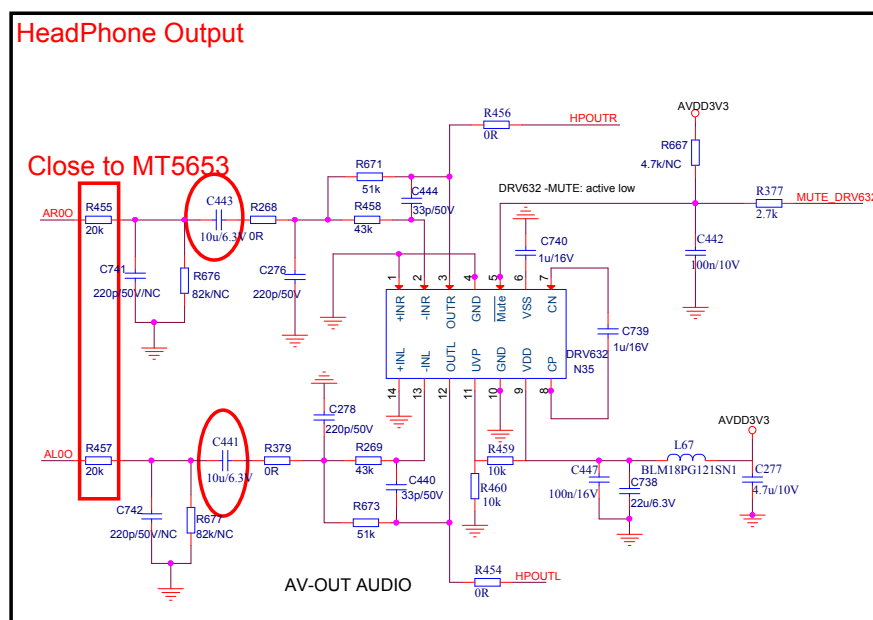
2,3,4,5,6,7,8,9,11,12,13,14,15,16,17	GND	《》	GND	
2,3,4,6,8,9,13	AVDDIOV3	《》	AVDDIOV3	
2,8,12	AVDDIOV2	《》	AVDDIOV2	
2,3,4,5,11	3VS	《》	3VS	
2,5,6,7,8,9,12,14,15,16,17	5VS	《》	5VS	
	3.5 VCCK	《》	VCCK	
	5.16 5VS	《》	5VS	
10	HDMI_ARC	《》	HDMI_ARC	
4,12	OSDA0	《》	OSDA0	
4,12	OSCL0	《》	OSCL0	
13	INT	《》	INT	
13	MHL_RESET	《》	MHL_RESET	
13	OPCTRL0	《》	OPCTRL0	

Hisense Electric Co.,LTD			
Title		LVDS POWER CONTROL	
Size	Document Number	Rev	
A2	MT5653	1.0	
Date:	Tuesday, January 07, 2014	Sheet	12 of 17

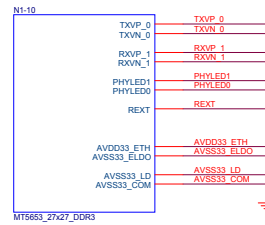
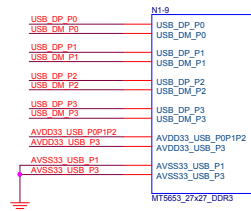




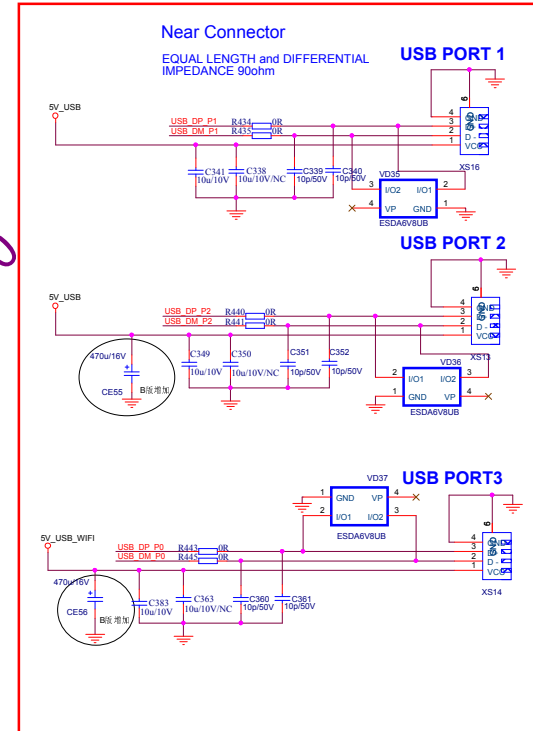
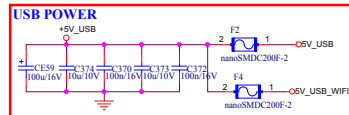
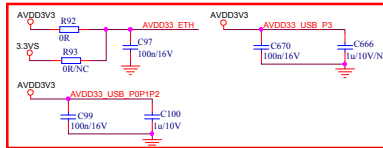
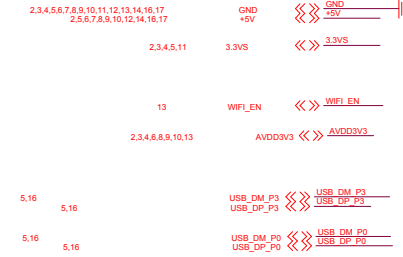
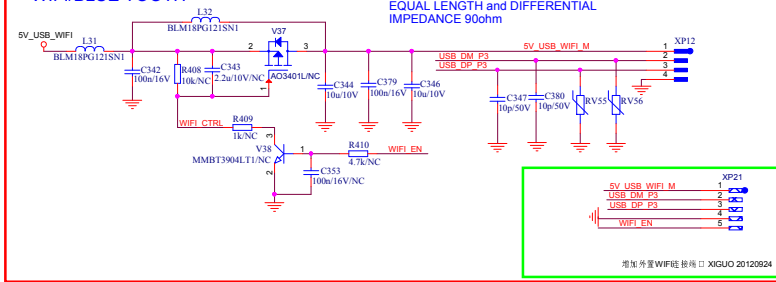
AVDD3V3	<<>>	AVDD3V3
GND	<<>>	GND
+5V	<<>>	+5V
+12V	<<>>	+12V
+14V	<<>>	+14V
5VS	<<>>	5VS
DVDD3V3	<<>>	DVDD3V3
3.3VS	<<>>	3.3VS
OSCL0	<<>>	OSCL0
OSDA0	<<>>	OSDA0
AOMCLK_D	<<>>	AOMCLK_D
AOBCLK_D	<<>>	AOBCLK_D
AOLRCK_D	<<>>	AOLRCK_D
AOSDATA0_D	<<>>	AOSDATA0_D
HPDET#	<<>>	HPDET#
MUTE_HP	<<>>	MUTE_HP
ALIO	<<>>	ALIO
AR0	<<>>	AR0
RSTAMP	<<>>	RSTAMP
MUTE_5707	<<>>	MUTE_5707
POP_MUTE_DRV632	<<>>	POP_MUTE_DRV632
14,15 VPA	<<>>	VPA
16 Woofer_IN+	<<>>	Woofer_IN+
16 Woofer_IN-	<<>>	Woofer_IN-
17 ALIO	<<>>	ALIO
17 AR10	<<>>	AR10
9 SCART1L_PA	<<>>	SCART1L_PA
9 SCART1R_PA	<<>>	SCART1R_PA



USB&WIFIÐER

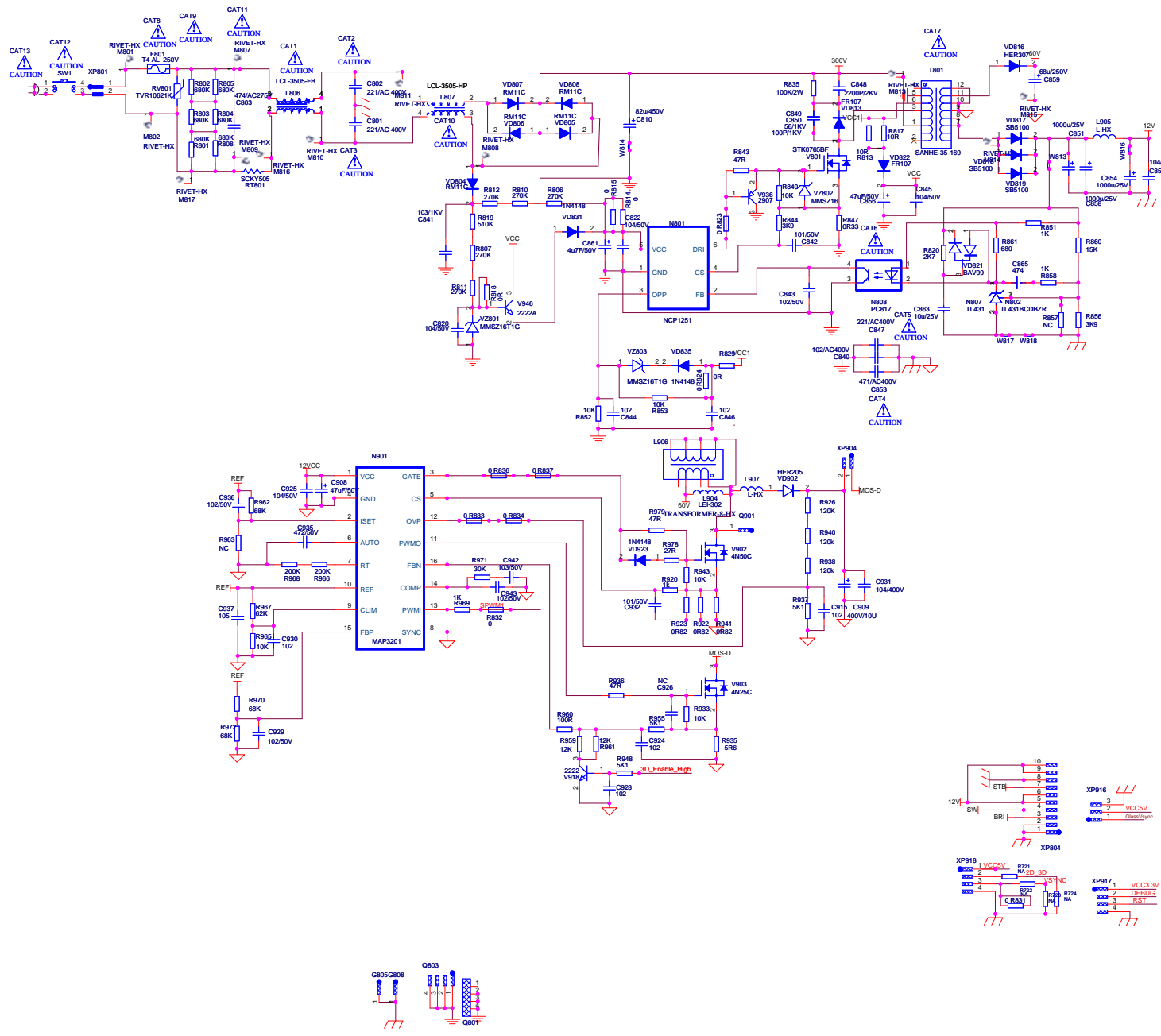


WIFI/BLUE TOOTH



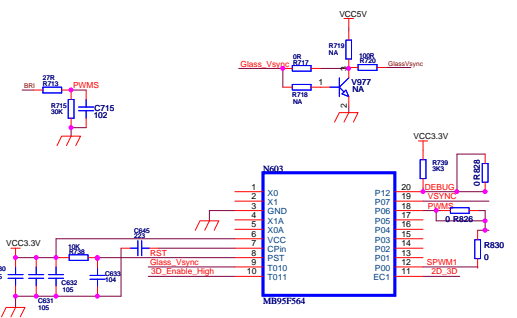
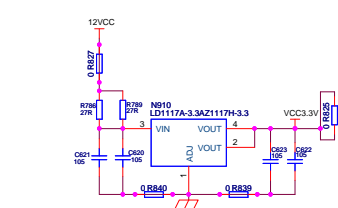
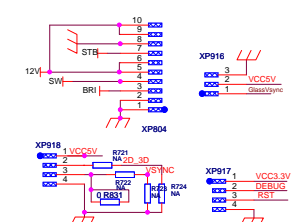
I2C Address
= 0x6A

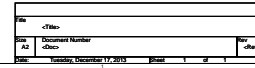


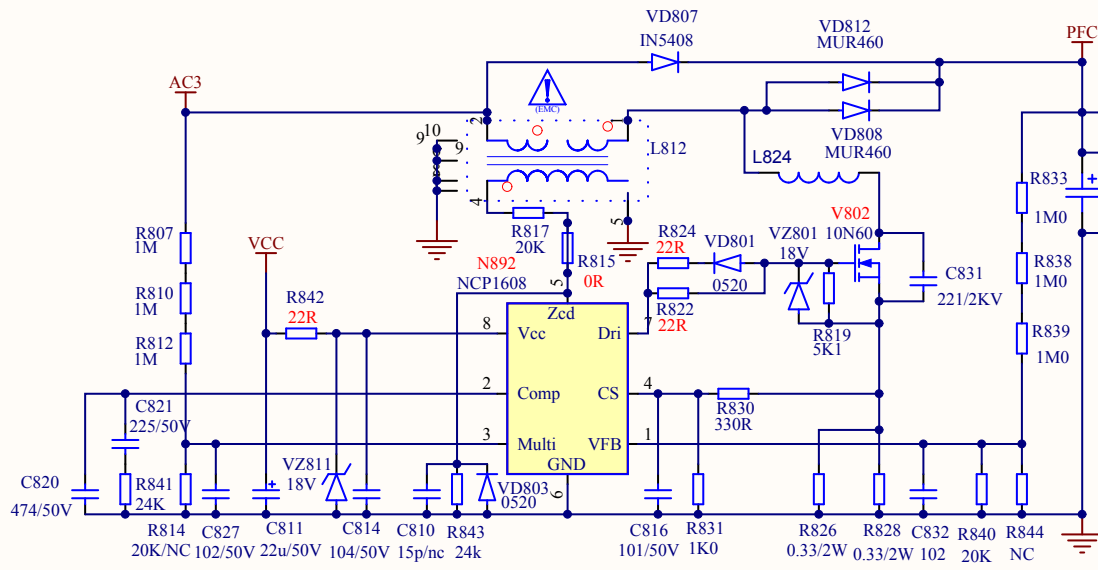
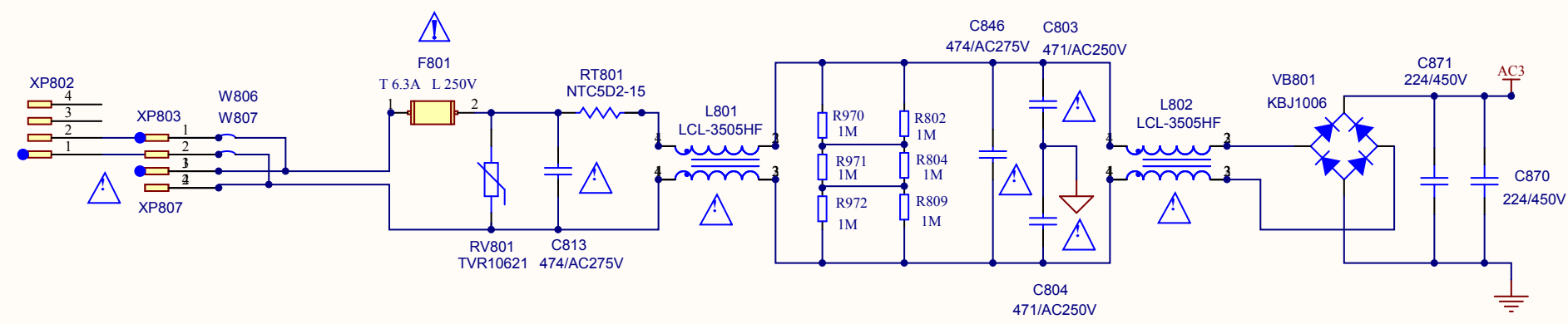


power board:5427

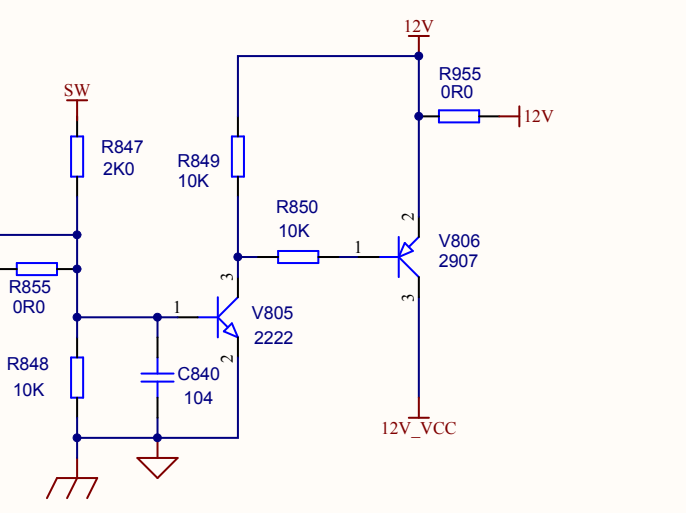
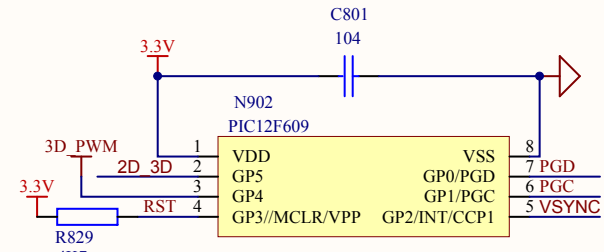
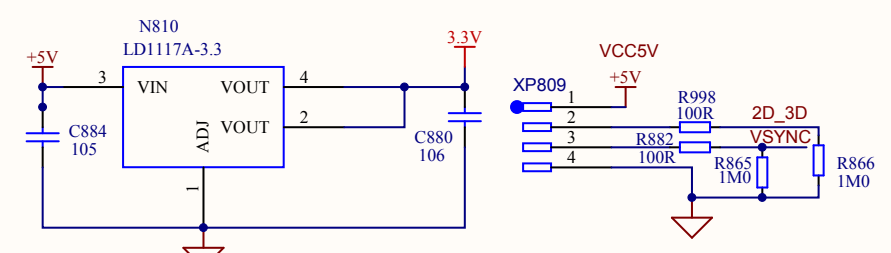
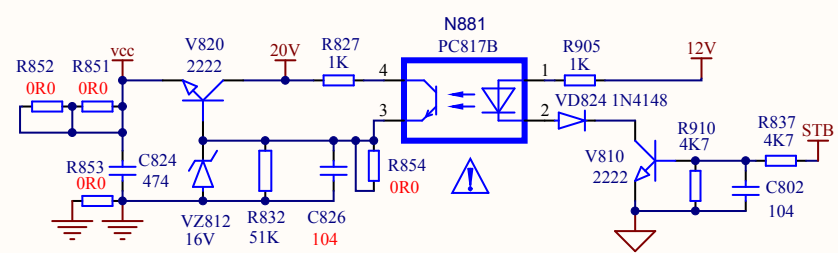
LHD32K370WTEU PB



[illegible]



power board:5687



LTDN50K370W7GEU PB

