

# **LCD Television Service Manual**

---

**Chassis: MT5651HROI+MST6M40A**

**Product Type: LTDN50K3801UWTRU、LTDN50XT880XWT3D(1)**

**Ver 1.0**

**Hisense Electric Co., Ltd.**

**December, 2014**

---

---

# Contents

<b>Contents</b> .....	2 -
<b>Service Manual</b> .....	3 -
1. Precautions and notices.....	3 -
1.1 Warning.....	4 -
1.2 Notes.....	7 -
2. Product Function Specifications .....	9 -
3. Factory/Service OSD Menu and Adjustment.....	17 -
3.1 To enter the Factory OSD Menu .....	17 -
3.2 Factory OSD Menu.....	17 -
3.3 Designer Menu.....	20 -
4. Software Upgrading.....	20 -
Before upgrading, read the following .....	20 -
4.1 USB Software Upgrading directly .....	20 -
4.2 USB upgrading failure .....	21 -
4.3 Upgrading with the FlashTool0.6.0.exe .....	23 -
4.4 Network updating .....	26 -
5. Trouble shooting .....	31 -
5.1 Troubleshooting for Remote Control .....	32 -
5.2 Troubleshooting for Function Key.....	33 -
5.3 TV won't Power On.....	34 -
5.4 Troubleshooting for Audio.....	35 -
5.5 Troubleshooting for TV/VGA/HDMI input.....	36 -
5.6 Troubleshooting for YPbPr input.....	37 -
5.7 Troubleshooting for Video input.....	38 -
6. Signals Block Diagram and power assign: .....	38 -
7. Schematic circuit diagram .....	38 -
8. Explode View.....	38 -

---

# Service Manual

## 1. Precautions and notices

BEFORE SERVICING THE LCD TV, READ THE SAFETY PRECAUTIONS IN THIS MANUAL.

USE ONLY MANUFACTURER SPECIFIED REPLACEMENT PARTS WHEN SERVICING.

USE OF NON-AUTHORIZED PARTS WILL VOID THE MANUFACTURE'S WARRANTY

Proper service and repair is important to the safe, reliable operation of all Hisense Equipment. The service procedures recommended by Hisense and described in this Service Guide are effective methods of performing service operations. Some of these service operations require the use of tools specially designed for the purpose. The special tools should be used when and as recommended.

It is important to note that this manual contains various CAUTIONS and NOTICES which should be carefully read in order to minimize the risk of personal injury to service personnel. The possibility exists that improper service methods may damage the equipment and pose risk of personal injury

. It is also important to understand that these CAUTIONS and NOTICES ARE NOT EXHAUSTIVE. Service should only be performed by an experienced electronics

---

technician trained in the proper Television safety and service methods and procedures  
Hereafter throughout this manual, HISENSE will be referred to.

## **1.1 Warning**

### **1.1.1**

Critical components having special safety characteristics are identified with a ▲ by the Ref. No. in the parts list. Use of non-manufacturer's recommended parts may create shock, fire, or other hazards. Under no circumstances should the original design be modified or altered without written permission from RCA. Hisense Eassumes no liability, express or implied, arising out of any unauthorized modification of design. Servicetech assumes all liability.

#### **DANGER CAUTION**

TO ENSURE THE CONTINUED RELIABILITY OF THIS PRODUCT, USE ONLY ORIGINAL MANUFACTURER'S REPLACEMENT PARTS, WHICH ARE LISTED WITH THEIR PART NUMBERS IN THE PARTS LIST SECTION OF THIS SERVICE GUIDE.

### **1.1.2.**

All ICs and many other semiconductors are susceptible to electrostatic discharges (ESD). Careless handling during repair can reduce life drastically. When repairing, be sure to use anti-static table mats and properly use a grounding wrist stra. Keep components and tools also at this same potential.

---

## IMPORTANT:

Always disconnect the power cord from AC outlet before replacing parts or modules.

### 1.1.3

To prevent electrical shock, use only a properly grounded 3 prong outlet or extension cord.

### 1.1.4

When replacement parts are required, be sure to use replacement parts specified by the manufacturer or have the same characteristics as the original part. Unauthorized substitutions may result in fire, electric shock, or other hazards and will void the manufacturer's warranty.

### 1.1.5

Safety regulations require that after a repair the set must be returned in its original condition. In addition, prior to closing set, check that:

-Note:

>All wire harnesses and flex cables are properly routed and secured with factory tape and/or mounted cable clamps.

> All cables and connectors are properly insulated and do not have any bare wires/lead exposed

### 1.1.6

(1) Do not supply a voltage higher than that specified to this product. This may

---

damage the product and may cause a fire.

(2) Do not use this product:

> High humidity areas

> In an area where any water could enter or splash into the unit.

High humidity and water could damage the product and cause fire.

(3) If a foreign substance (such as water, metal, or liquid) gets inside the panel module, immediately turn off the power. Continuing to use the product may cause fire or electric shock.

(4) If the product emits smoke, and abnormal smell, or makes an abnormal sound, immediately turn off the power. Continuing to use the product, it may cause fire or electric shock.

(5) Do not pull out or insert the power cable from/to an outlet with wet hands. It may cause electric shock.

(6) Do not damage or modify the power cable. It may cause fire or electric shock.

(7) If the power cable is damaged, or if the connector is loose, do not use the product: otherwise, this can lead to fire or electric shock.

(8) If the power connector or the connector of the power cable becomes dirty or dusty, wipe it with a dry cloth. Otherwise, this can lead to fire.

(9) Use only with the cart, stand, tripod, bracket, or table specified by the manufacturer, or sold with the apparatus. When a cart is used, use caution when moving the cart/apparatus combination to avoid injury from tip-over

---

## 1.2 Notes

Notes on Safe Handling of the LCD panel and during service

The work procedures shown with the Note indication are important for ensuring the safety of the product and the servicing work. Be sure to follow these instructions.

- Before starting the work, secure a sufficient working space.
- At all times other than when adjusting and checking the product, be sure to turn OFF the POWER Button and disconnect the power cable from the power source of the TV during servicing.
- To prevent electric shock and breakage of PC board, start the servicing work at least 30 seconds after the main power has been turned off. Especially when installing and removing the power board, start servicing at least 2 minutes after the main power has been turned off.
- While the main power is on, do not touch any parts or circuits other than the ones specified. If any connection other than the one specified is made between the measuring equipment and the high voltage power supply block, it can result in electric shock or may trip the main circuit breaker When installing the LCD module in, and removing it from the packing carton, be sure to have at least two persons perform the work.
- When the surface of the panel comes into contact with the cushioning materials, be sure to confirm that there is no foreign matter on top of the cushioning materials before the surface of the panel comes into contact with the cushioning materials. Failure to observe this precaution may result in, the surface of the panel being scratched by foreign

---

matter.

- Be sure to handle the circuit board by holding the large parts as the heat sink or transformer. Failure to observe this precaution may result in the occurrence of an abnormality in the soldered areas.
- Do not stack the circuit boards. Failure to observe this precaution may result in problems resulting from scratches on the parts, the deformation of parts, and short-circuits due to residual electric charge.
- Perform a safety check when servicing is completed. Verify that the peripherals of the serviced points have not undergone any deterioration during servicing. Also verify that the screws, parts and cables removed for servicing purposes have all been returned to their proper locations in accordance with the original setup.



The lightning flash with arrowhead symbol, within an equilateral triangle is intended to alert the user to the presence of uninsulated dangerous voltage within the products enclosure that may be of sufficient magnitude to constitute a risk of electric shock.



The exclamation point within an equilateral triangle is intended to alert the user to the presence of important operating and maintenance (servicing) instructions in the literature accompanying the set.



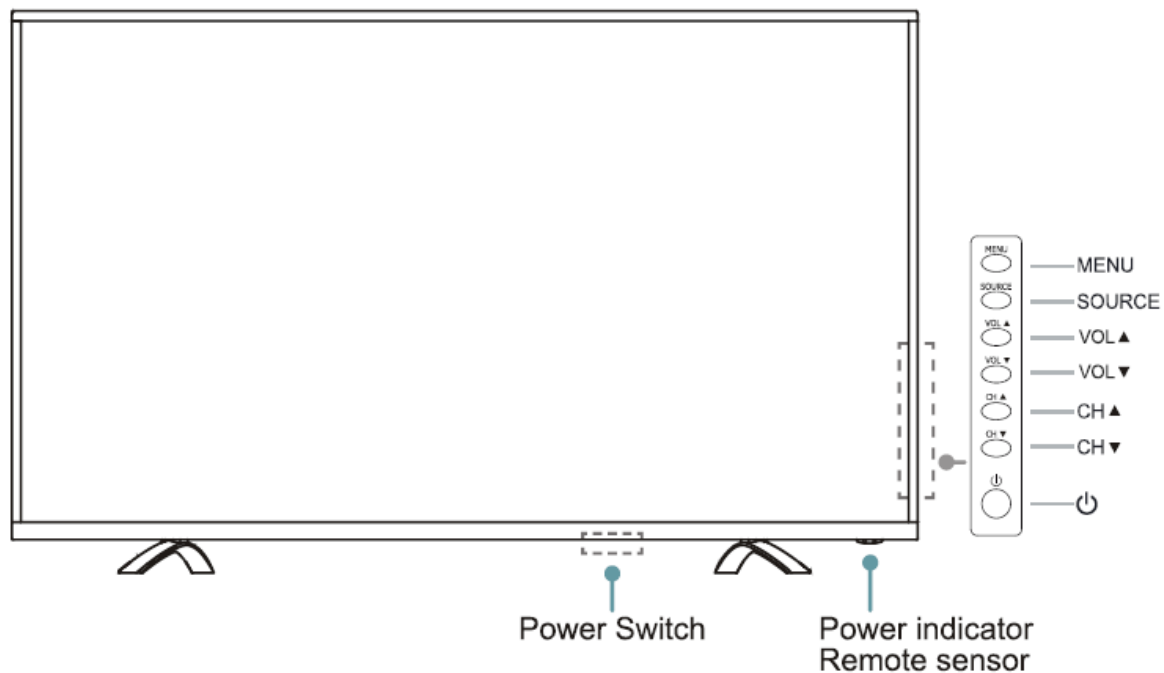
---


## 2. Product Function Specifications

### 2.1 TV Front and Rear

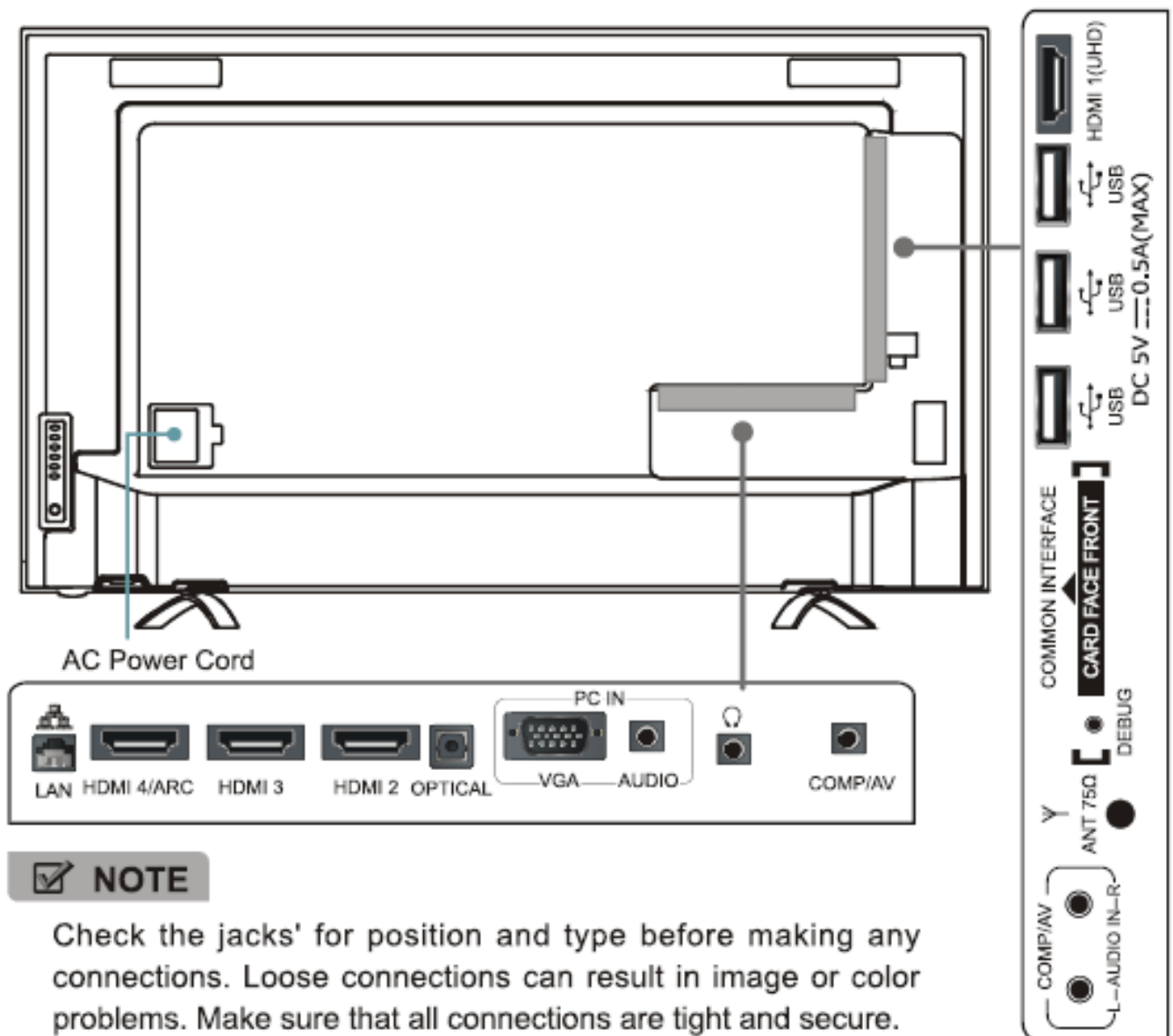
LTDN50K3801UWTRU:

#### TV Front



Item	Description
Power Switch	Turn the main power ON or OFF.
Power indicator	Red lights up in standby mode. Blue lights up when the TV is switched on.
Remote sensor	Receives remote signals from the remote control. Do not put anything near the sensor, as its function may be affected.
MENU	Display an on-screen menu to setup your TV's features.
SOURCE	Select among the different input signal sources.
VOL ▲ / ▼	Adjust the volume.
CH ▲ / ▼	Select the channel.
Power Standby button 	Turn on the TV or put the TV in standby mode. <b>Caution:</b> The TV continues to receive power even in standby mode. Unplug the power cord to disconnect power.

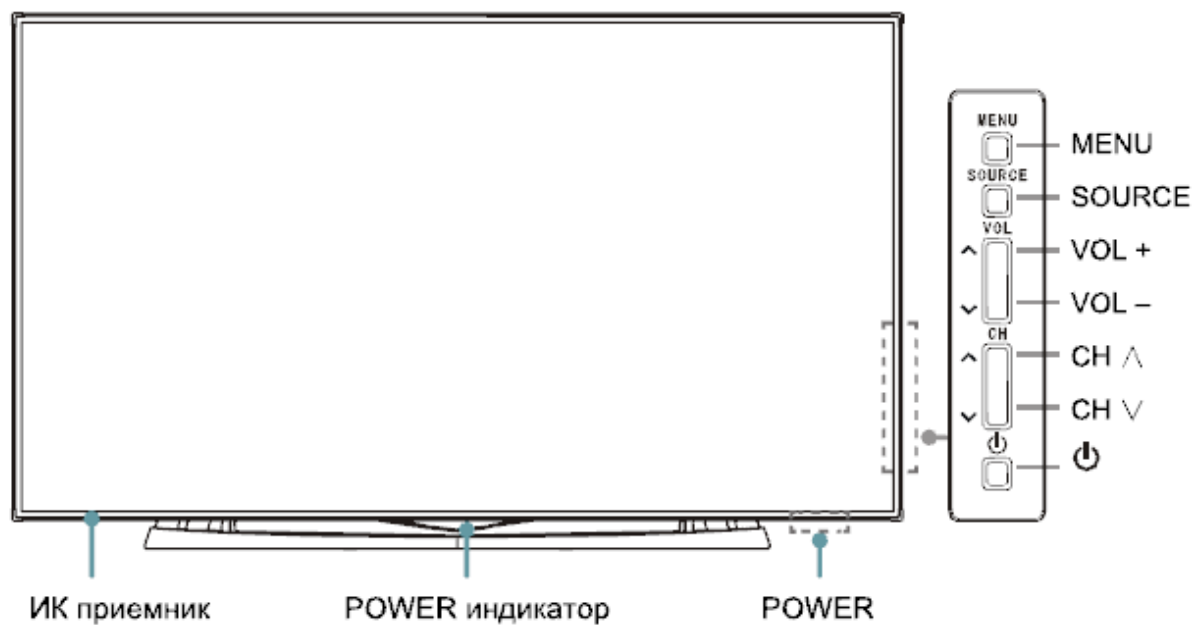
## TV Rear



---

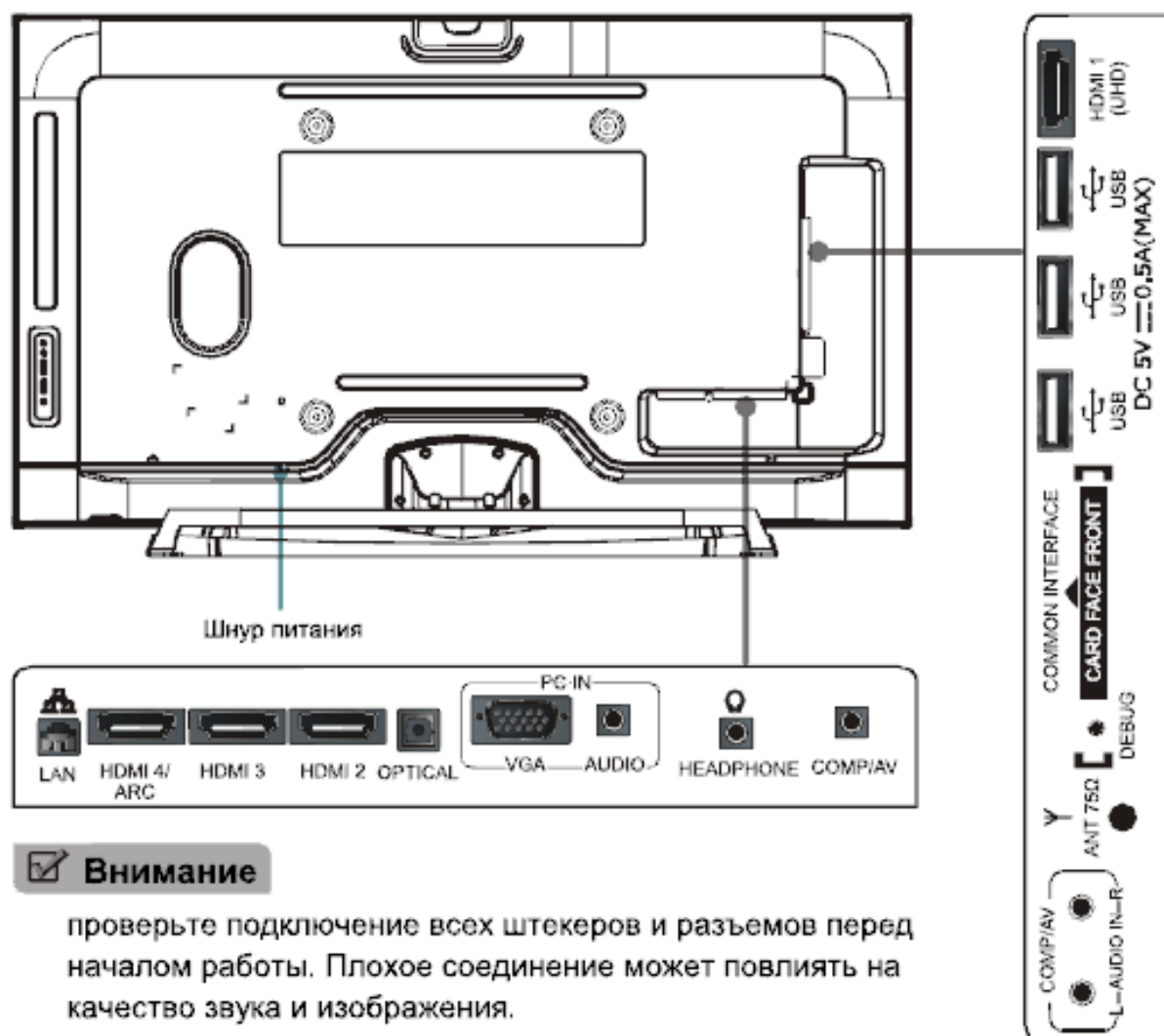
## LTDN50XT880XWT3D(1)

### TV Front



Элемент	Описание
POWER	Включение и выключение телевизора
POWER индикатор	Индикатор состояния телевизора
ИК приемник	Приемник инфракрасного сигнала от ПДУ
MENU	Вызов экранного меню
SOURCE	Выбор источника сигнала
VOL +/-	Регулировка громкости
CH ^/v	Переключение каналов
POWER	Включение и выключение телевизора

## TV Rear



### **Внимание**

проверьте подключение всех штекеров и разъемов перед началом работы. Плохое соединение может повлиять на качество звука и изображения.

---

## 2.2 Main board: 5784

The top:



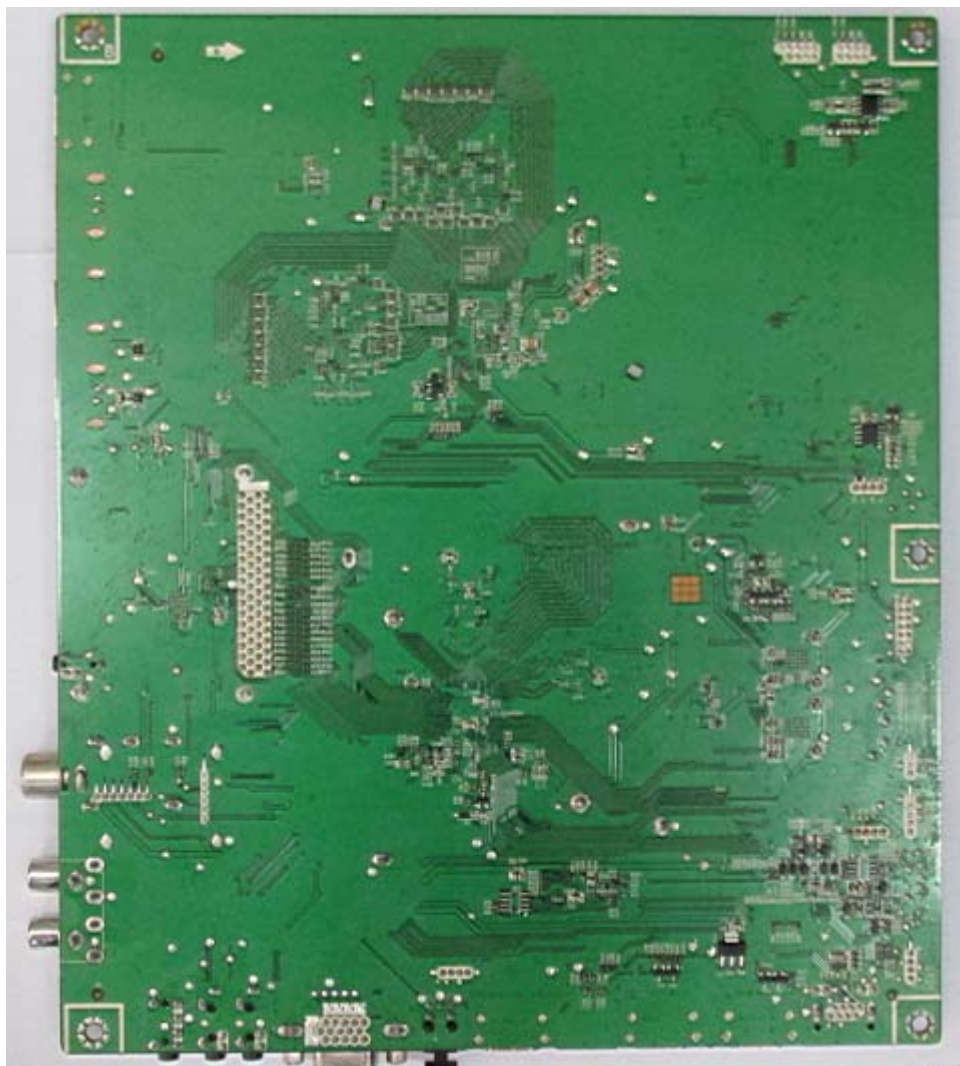
Note:

The terminal function of main board can refer to the TV Rear instruction.

(page 10 or page 12)

---

## The Bottom



### Basic feature:

Product	Main & Power board	Screen Resolution	Panel	LVDS cable
LTDN50K3801UWTRU	MB: RSAG2.908.5784\ROH ; PB: RSAG2.908.5687-26\ROH	3840*2160	HE500HU-B01\S1	HX2-2X25KLB500-LG-1\ROH
LTDN50XT880XWT3D(1)	MB: RSAG2.908.5784\ROH 、 PB: RSAG2.908.4903-07\ROH	3840*2160	V500DK2-KS1\JK\ROH	FFC-51-505\505.0\白\ROH



---

## 2.3 Spec.

### LTDN50K3801UWTRU

<b>Model Name</b>	<b>LTDN50K3801UWTRU</b>
<b>Size with base (mm)</b>	1118 × 691 × 226
<b>Size without base (mm)</b>	1118 × 650 × 60
<b>Weight with base (kg)</b>	16
<b>Weight without base (kg)</b>	16.5
<b>Screen Diagonal Size</b>	50 inches
<b>Screen resolution</b>	3840 × 2160
<b>Sound Output (RMS)</b>	10 W +10 W
<b>Power consumption</b>	Please refer to the rating label
<b>Power supply</b>	Please refer to the rating label
<b>AV Colour System</b>	PAL NTSC SECAM
<b>Television System</b>	PAL/SECAM-B/G,D/K DVB-T+C DVB-T2
<b>Environmental conditions</b>	Temperature: 5°C - 45°C Humidity: 20% - 80% RH Atmospheric pressure: 86 kPa - 106 kPa
<b>Component mode</b>	480I/60Hz, 480P/60Hz, 576I/50Hz, 576P/50Hz, 720P/50Hz, 720P/60Hz, 1080I/50Hz, 1080I/60Hz, 1080P/50Hz, 1080P/60Hz
<b>VGA mode</b>	640×480, 800×600, 1024×768, 1280×1024 60Hz
<b>HDMI mode</b>	480I/60Hz, 480P/60Hz, 576I/50Hz, 576P/50Hz, 720P/50Hz, 720P/60Hz, 1080I/50Hz, 1080I/60Hz, 1080P/50Hz, 1080P/60Hz 640×480, 800×600, 1024×768 60Hz 3840x2160/24Hz, 3840x2160/25Hz, 3840x2160/30Hz only for UHD port

<b>Модель</b>	<b>50XT880XWT3D</b>
<b>Размер с подставкой (mm)</b>	1123 x 675 x 259
<b>Размер без подставки (mm)</b>	1123 x 646 x 58
<b>Вес с подставки</b>	24 кг.
<b>Вес без подставки</b>	20,5 кг.
<b>Диагональ экрана</b>	50 дюймов
<b>Разрешение экрана</b>	3840x2160
<b>Аудио (RMS)</b>	10 Вт. + 10 Вт.
<b>Энергопотребление</b>	155 Вт.
<b>Источник питания</b>	AC 100-240 В 50/60 Гц
<b>AV система цветов</b>	PAL NTSC SECAM
<b>Система телевидения</b>	PAL/SECAM-BG/DK DVB-T+C DVB-T2
<b>Условия работы</b>	температура (5-45°C), влажность (20%-80%), давление (86 КПа – 106 КПа)
<b>Компонентный режим</b>	480I/60 Гц, 480P/60 Гц, 576I/50 Гц, 576P/50 Гц, 720P/50 Гц, 720P/60 Гц, 1080I/50 Гц, 1080I/60 Гц, 1080P/50 Гц, 1080P/60 Гц
<b>VGA режим</b>	640×480, 800×600, 1024×768, 1280×1024 60 Гц
<b>HDMI режим</b>	480I/60 Гц, 480P/60 Гц, 576I/50 Гц, 576P/50 Гц, 720P/50 Гц, 720P/60 Гц, 1080I/50 Гц, 1080I/60 Гц, 1080P/50 Гц, 1080P/60 Гц 640×480, 800×600, 1024×768 60 Гц HDMI1(UHD) 3840x2160/24 Гц, 3840x2160/25 Гц, 3840x2160/30 Гц



---

## 3. Factory/Service OSD Menu and Adjustment

### 3.1 To enter the Factory OSD Menu

- a. With factory RC (remote control)
  1. Press “M” button and enter factory mode.
  2. Press “Menu” button and enter factory OSD menu.
  3. Press “CH+”/“CH-” button select the function menu, press “VOL+”/“VOL-” enter the selected function menu. Press “VOL+”/“VOL-” button adjust values in the menu.
- b. With user’s RC
  1. Power TV On
  2. Press Menu button and call up User OSD Menu
  3. Select Audio-> Balance, when Balance is “0”
  4. Enter 1->9->6->9 in sequence.  
Note: If necessary, re-enter number keys.
  5. Factory OSD appears.
  6. Press Menu again and leave factory OSD.

### 3.2 Factory OSD Menu

(Take LTDN55K600XWSEU3D for example)

#### 3.2.1 White Balance

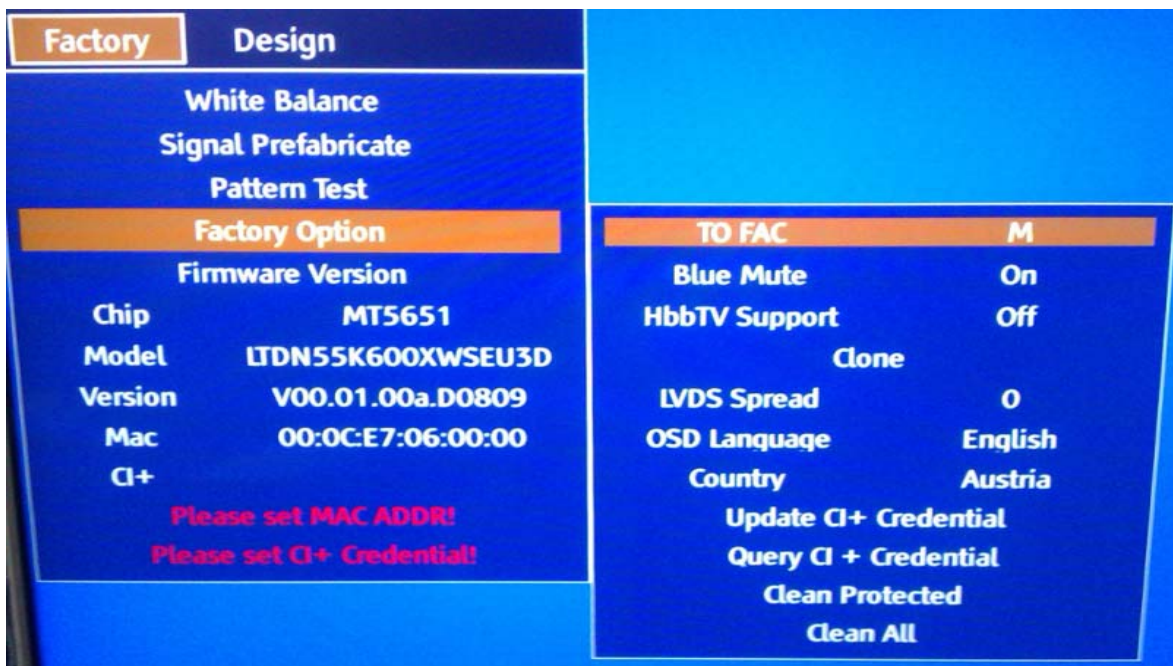
**Note: Different source has different WB values. Before adjusting, please change to desired source.**

Factory	Design		
White Balance		Panel type	B2
Signal Prefabricate		R Gain	129
Pattern Test		G Gain	128
Factory Option		B Gain	126
Firmware Version		R Offset	128
Chip	MT5651	G Offset	128
Model	LTDN55K600XWSEU3D	B Offset	127
Version	V00.01.00a.D0809		
Mac	00:0C:E7:06:00:00		
CI+			
Please set MAC ADDR!			
Please set CI+ Credential!			

### 3.2.1 Signal prefabricate



### 3.2.3 Factory Option



	Item	Default	Options	Notes
1	MODE	M	M, U	M-Can enter factory mode with factory RC or user RC. U-Can enter factory mode only with user' s RC.

Note: MODE “M” is only used for factory production.

---

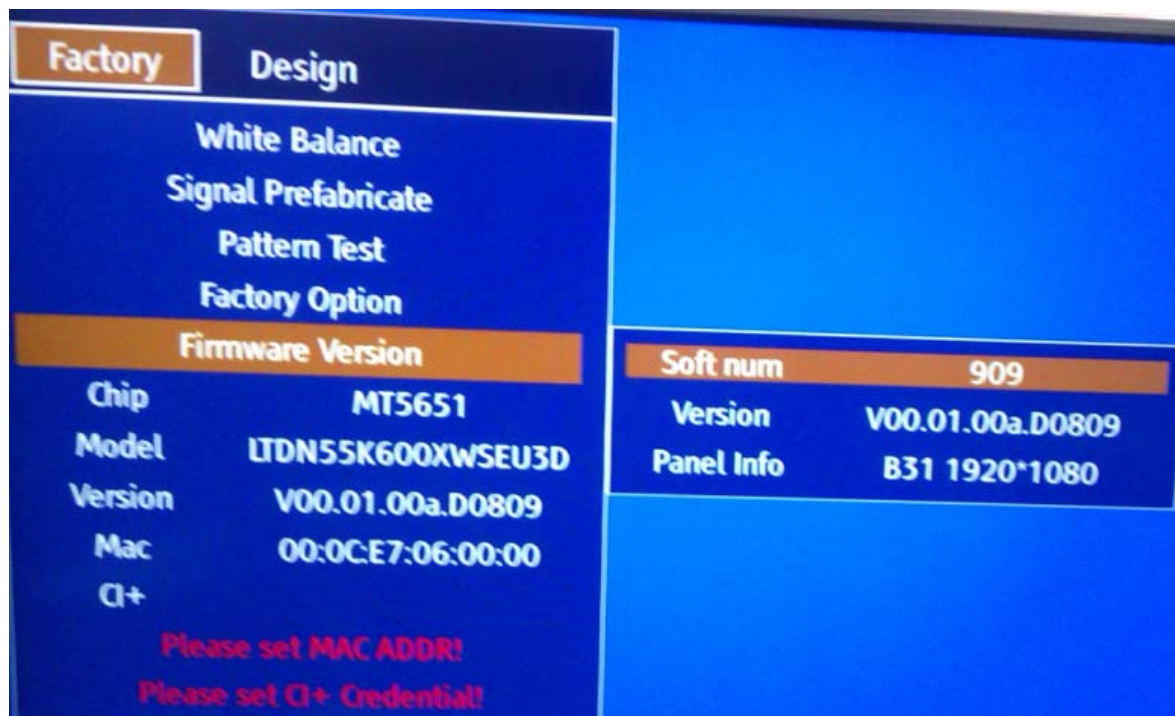
## Clear the EEPROM

Item	Meaning	Note
Clean Protected	Clear partly	Clean data except WB data and Auto Color data
Clean All	Clear completely	Clean all data

Update CI+Credential

Query CI+Credential

### 3.2.4 Firmware



**Note:** The factory menu data varies according to different sources. In case changing the factory data by error, you can choose to "Clean Protected", by which you can resume the default value.

**To clear the EEPROM:**

- Select the item "Clean Protected".
- Press VOL+ button to clear the EEPROM data.
- Close the OSD menu after 5 seconds.
- Restart the TV.

---

### 3.3 Designer Menu



**Note:**

Above “Factory/Service OSD Menu” is reference for chassis MTK5651 , please refer to the actual units to determine the appearances.

### 4. Software Upgrading

**Before upgrading, read the following.**

First: Upgrade the software.

Second: To clear the EEPROM .

- A Select the item “Clear Unprotected”.
- B Press VOL+ button to clear the EEPROM data.
- C Close the OSD menu after 5 seconds.
- D Restart the TV.

Last: After the operation above all, necessarily, Re-search the channels for the users

#### 4.1 USB Software Upgrading directly

The software can be upgraded by USB Disk.

- First, copy the upgrade\_loader.pkg file to USB Disk;.
- Second, make sure there is no other .pkg file in the root directory of USB Disk .
- Insert USB Disk to USB port, and then turn on the TV.
- The TV will identify the software and upgrade automatically.



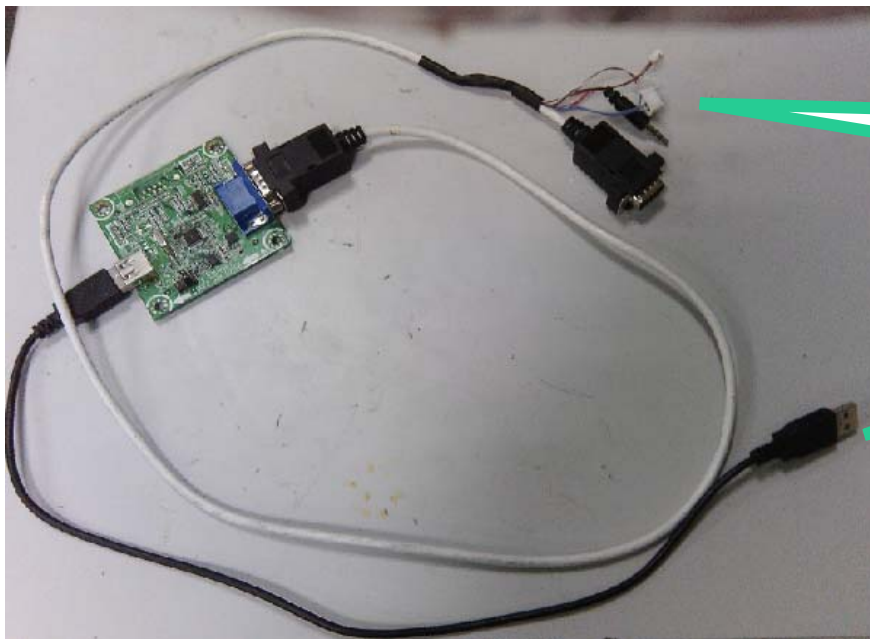
---

## 4.2 USB upgrading failure

If USB upgrading failure, then need burning the Nand Flash program file“ \*.bin ”to the Nand Flash.

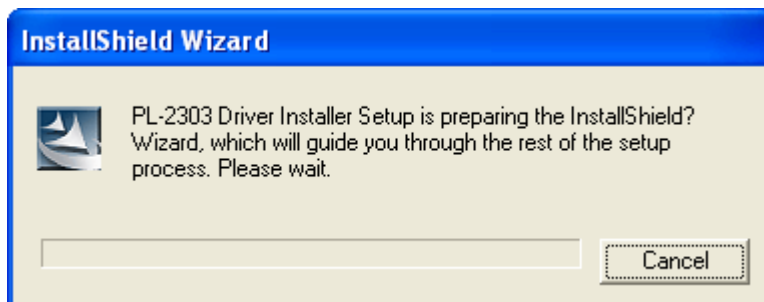
### Hardware connecting

Connect the unit to your pc with a USB-to-serial port cable. USB port connects to your PC and serial port to the TV's RS232 port. As following

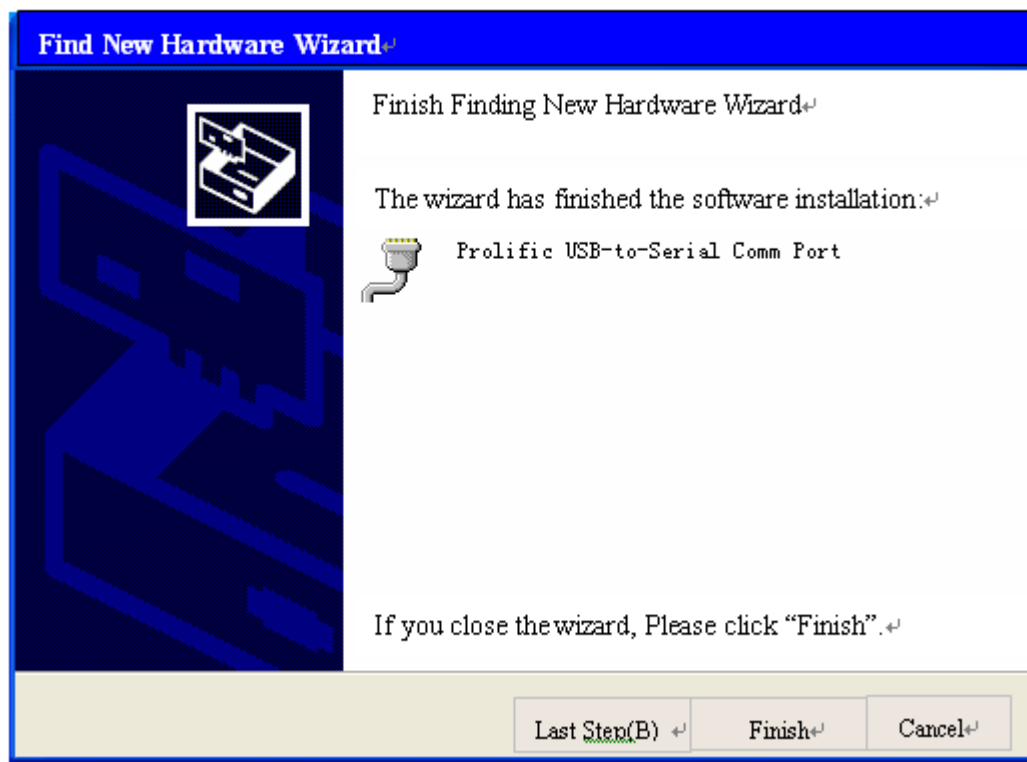


### 4.2.1 Install the driver

Double click the icon  , install the driver.



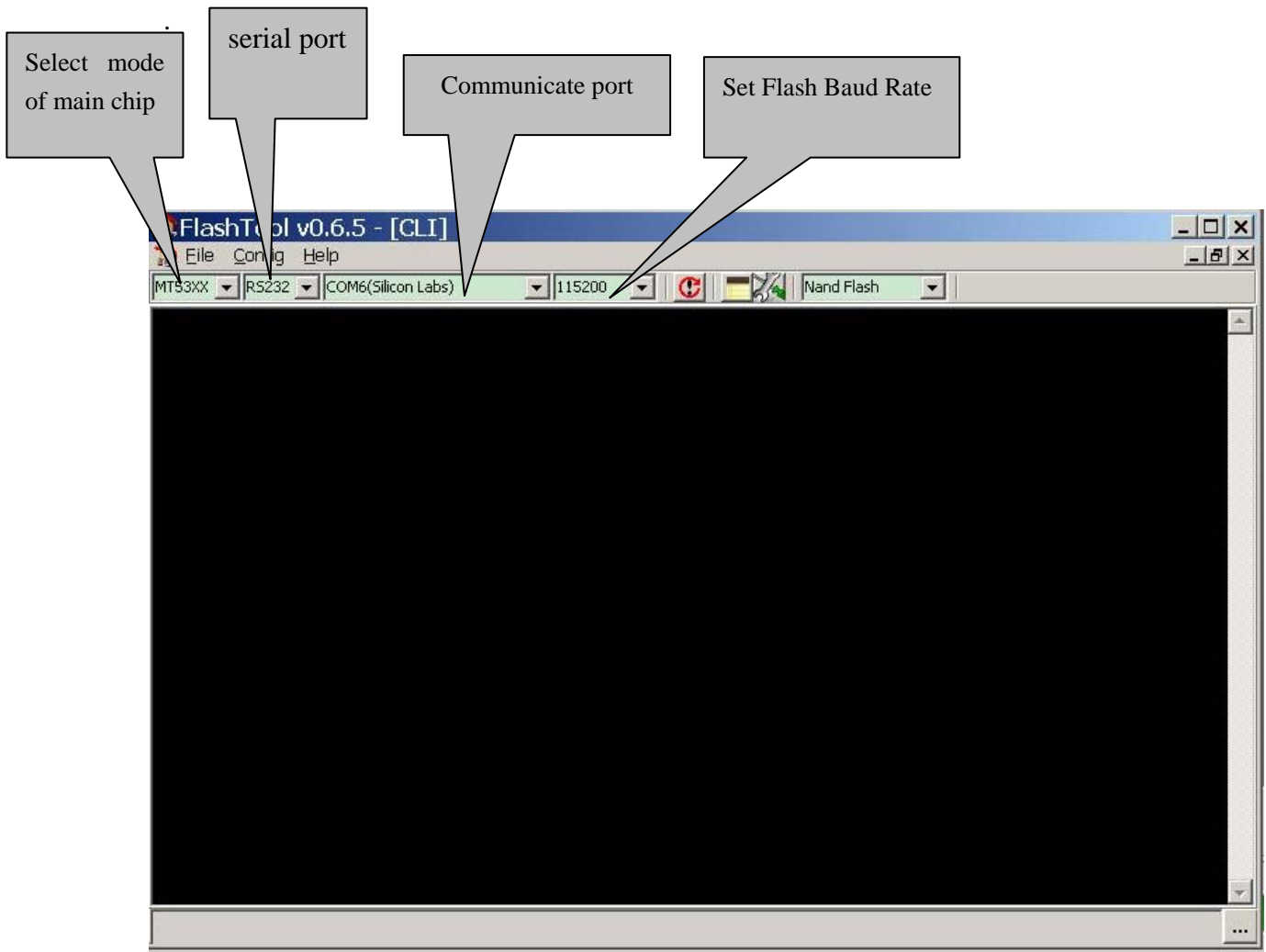
Select the default value, the driver will be installed step by step.



---

## 4.3 Upgrading with the FlashTool0.6.0.exe




1、FlashTool is a green program needing no installation. After Connect the unit to your pc with a USB-to-serial port cable, run FlashTool0.6.0.exe. Please refer to the following steps to set.

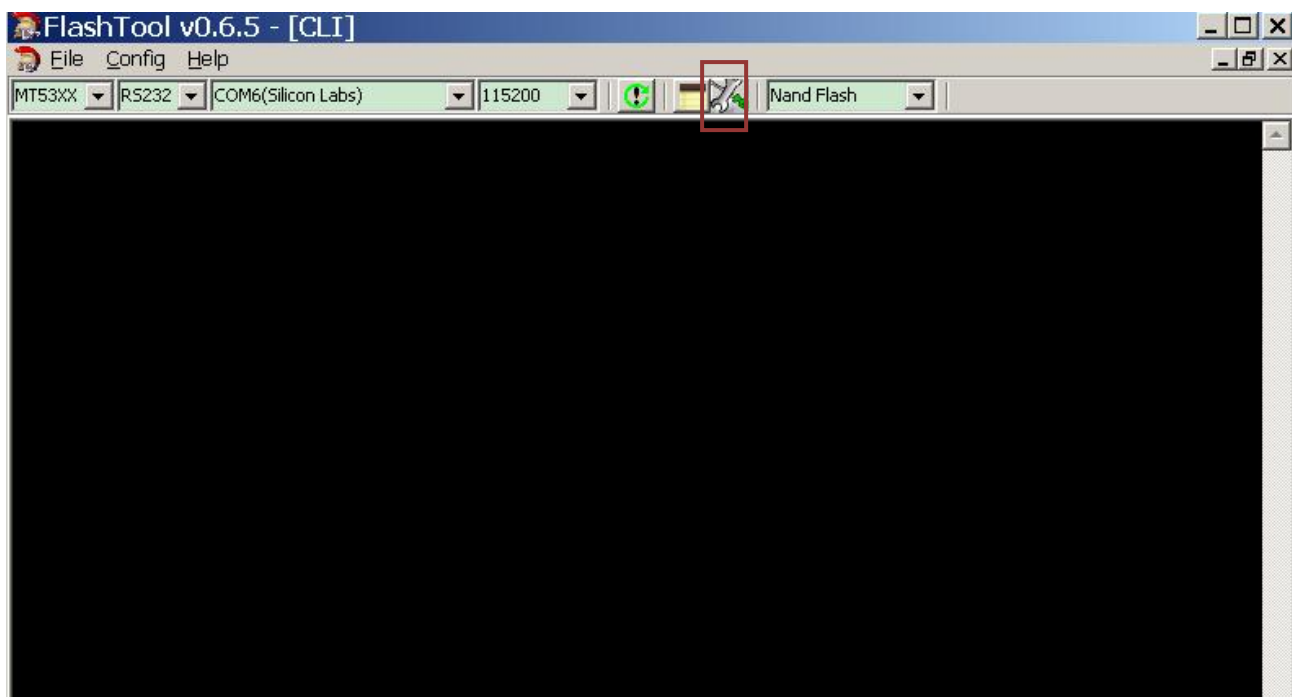


How to choose Communicate port and flash baud rate? See the following instruction..




Open “Device Manager” and find which port is connected with the TV. In above picture, COM4 is connected to the TV, so, select “COM4” and if COM6 is connected to the TV, so select “COM6”. Select the right baud rate according to chip model. For this unit( chip model is MT5651), select 115200.

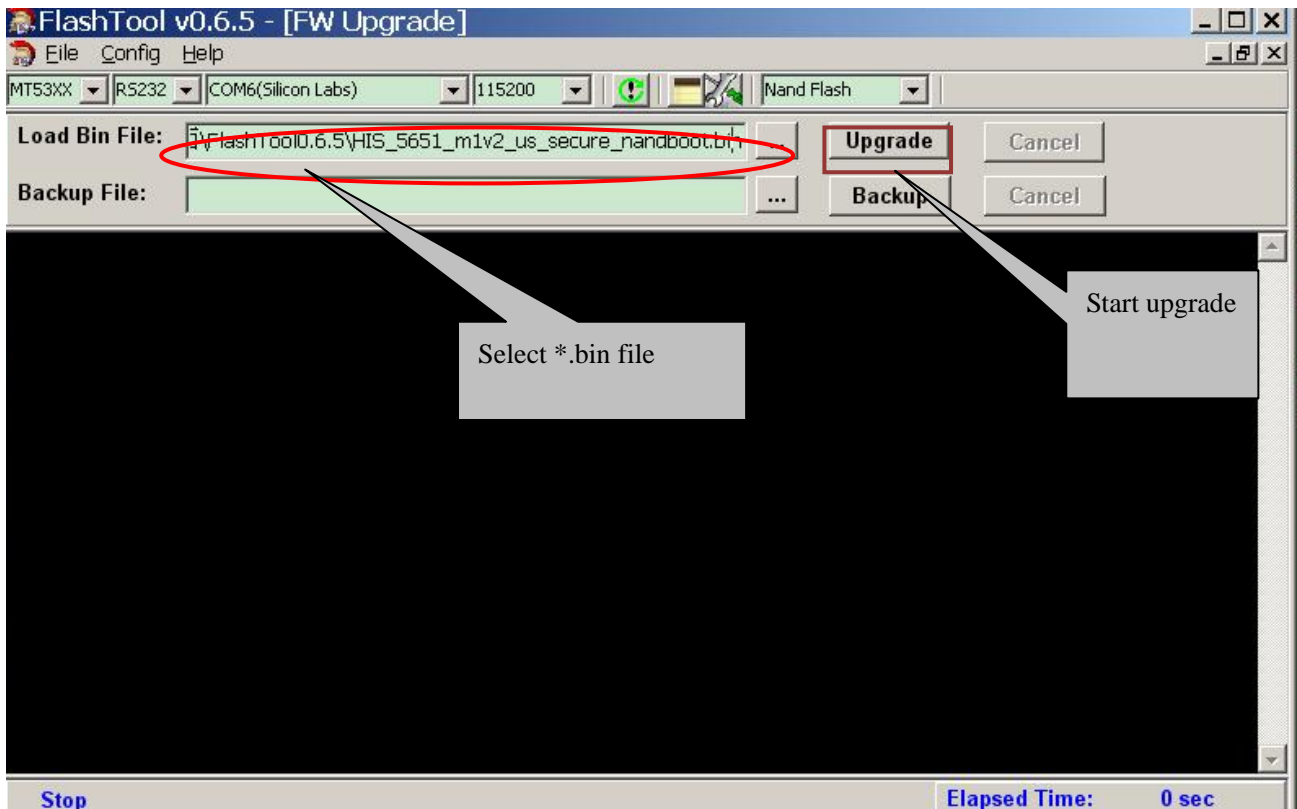
2、 Click  to connect, if connect successfully then button  from red turn green .





---

Click , bounce the following dialog box. Load Bin File: find the upgrading program file, and select it. for example: HIS\_5651\_m1v2\_oceania\_secure\_nandboot.bin. Press “Upgrade” button and start upgrading., if update defeat, try again.



---

## 4.4 Network updating

Network updating includes two ways. one is “Auto Upgrade ”the other is “Internet”. Whether Auto Upgrade is ON or Off, Network Upgrade is validated

Auto Upgrade---- When it is set to “on” , Turn on automatic check whether or not have any new updating file in servers when connects to the network. Customer can download and update according to the guide.

Internet” ---- Check the process and it will prompt you to upgrade the software.

### 1、Internet

Power on---Press “menu” key on RC, select as following.

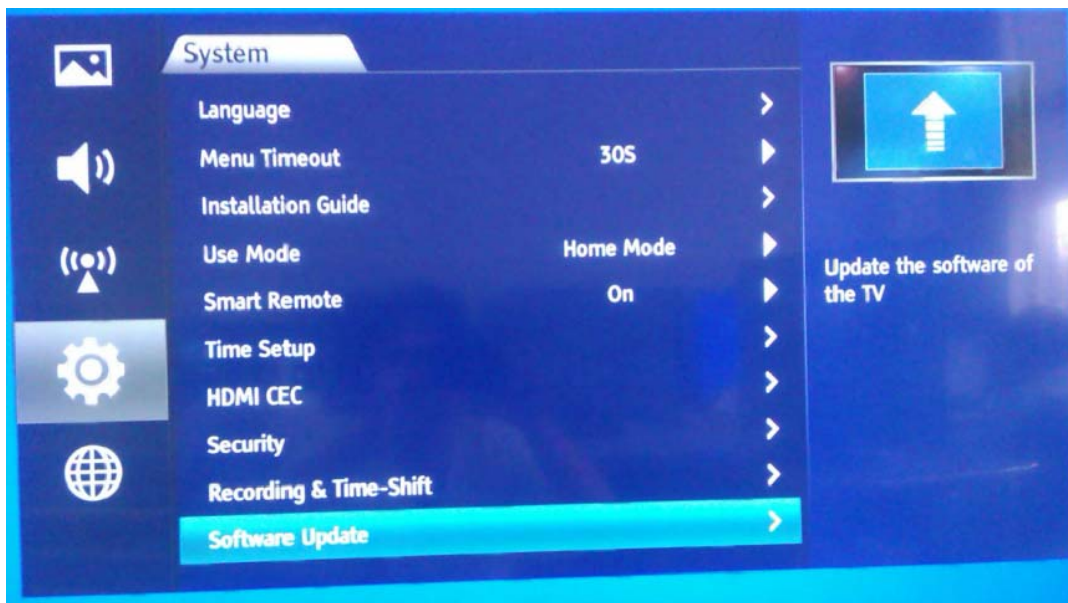


Figure-1

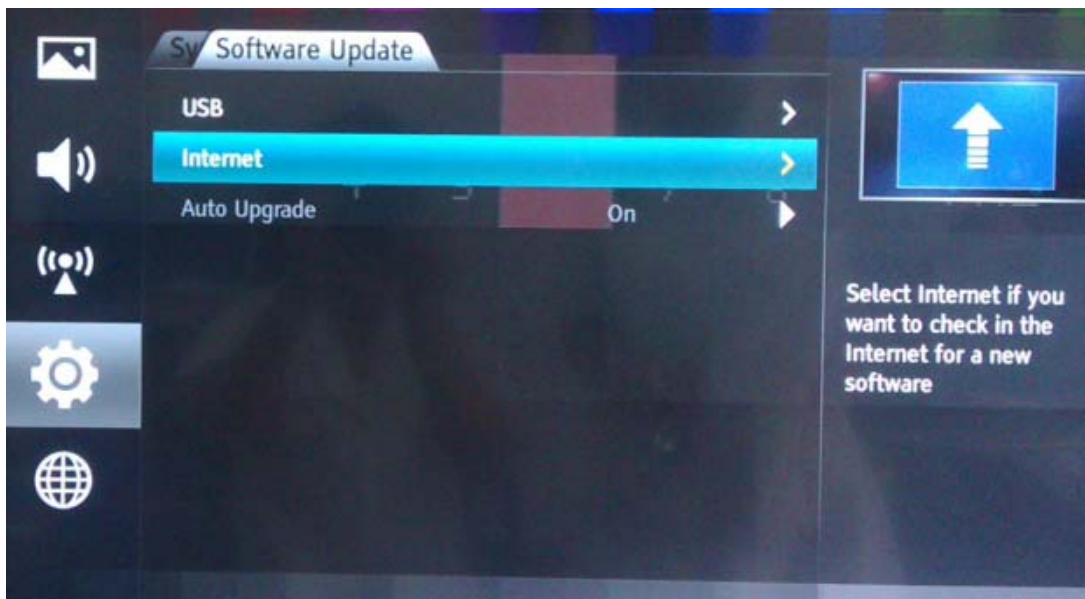


Figure-2

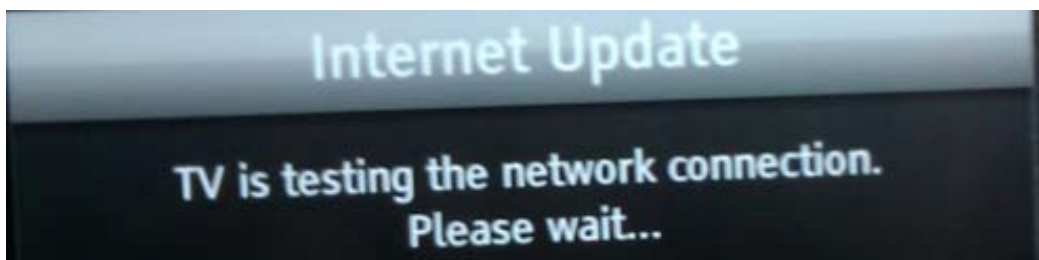


Figure-3

Check new version, then bounce the following .

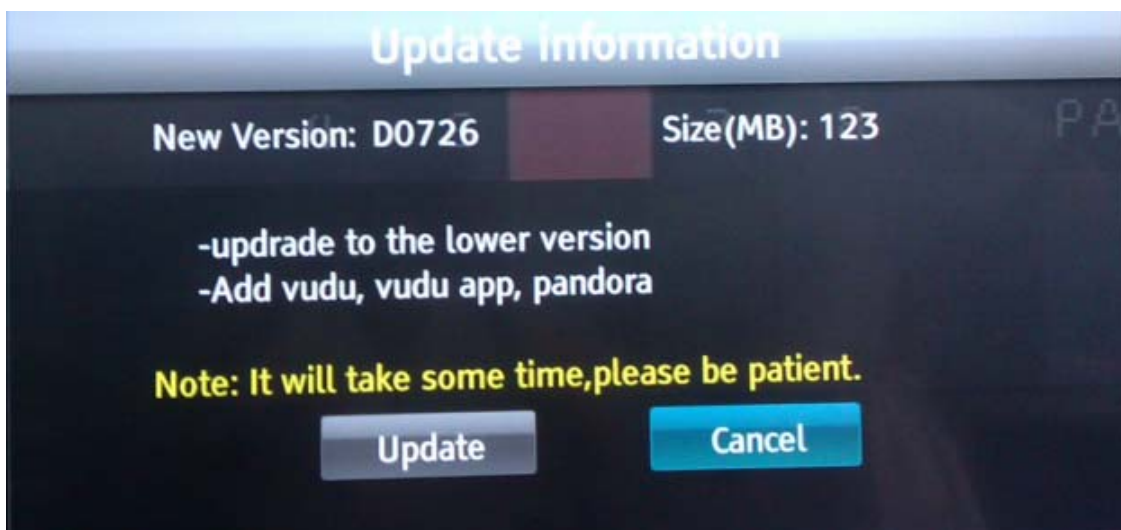


Figure-4

Select update to downloading.....

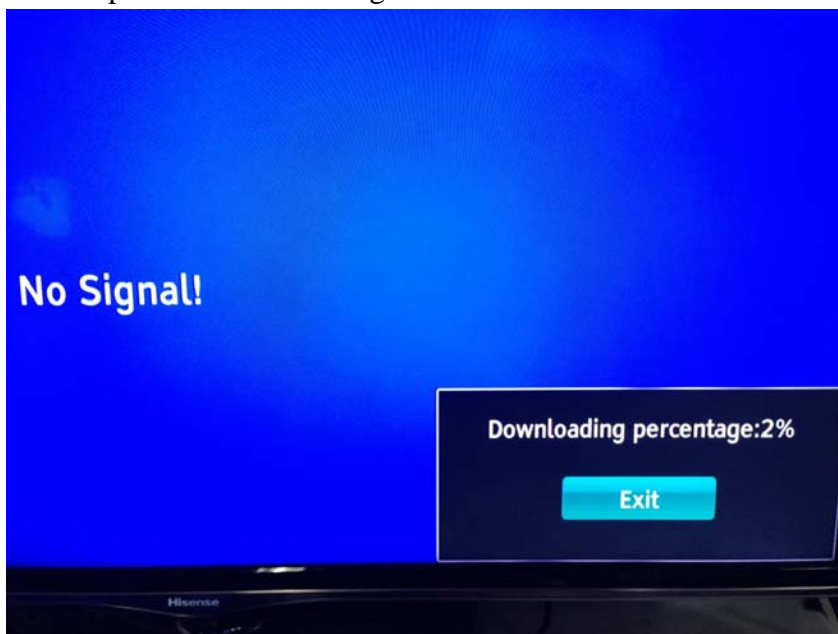


Figure-5

After verify, bounce dialog to select “yes” to sure to update the firmware. Waiting.....



Figure-6



---

Bounding following interface that indicates firmware update is sussessful.

Figure-7



Figure-8

Upgrade successfully. power off and restart TV can bounce following prompt message. otherwise upgrade is defeat.

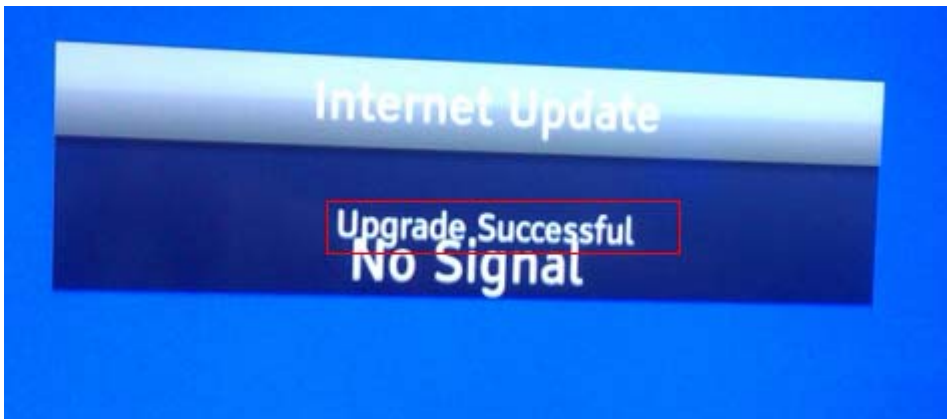


Figure-9

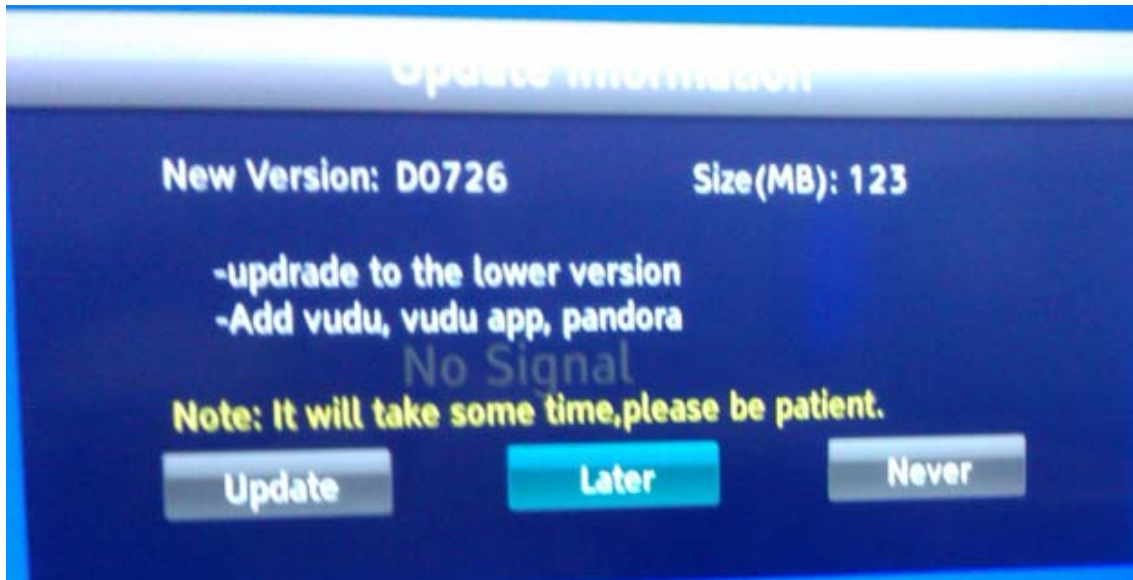


---

## 2、 Auto upgrade

Auto upgrade and Network have little difference only in figure-4. As following

Auto Upgrade:



Network upgrade:

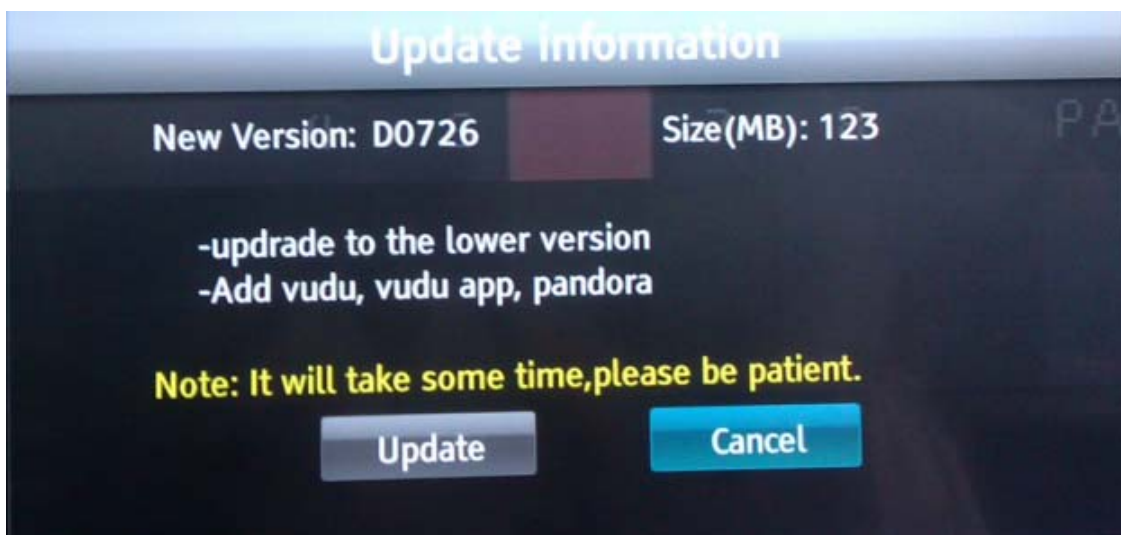


figure-2

---

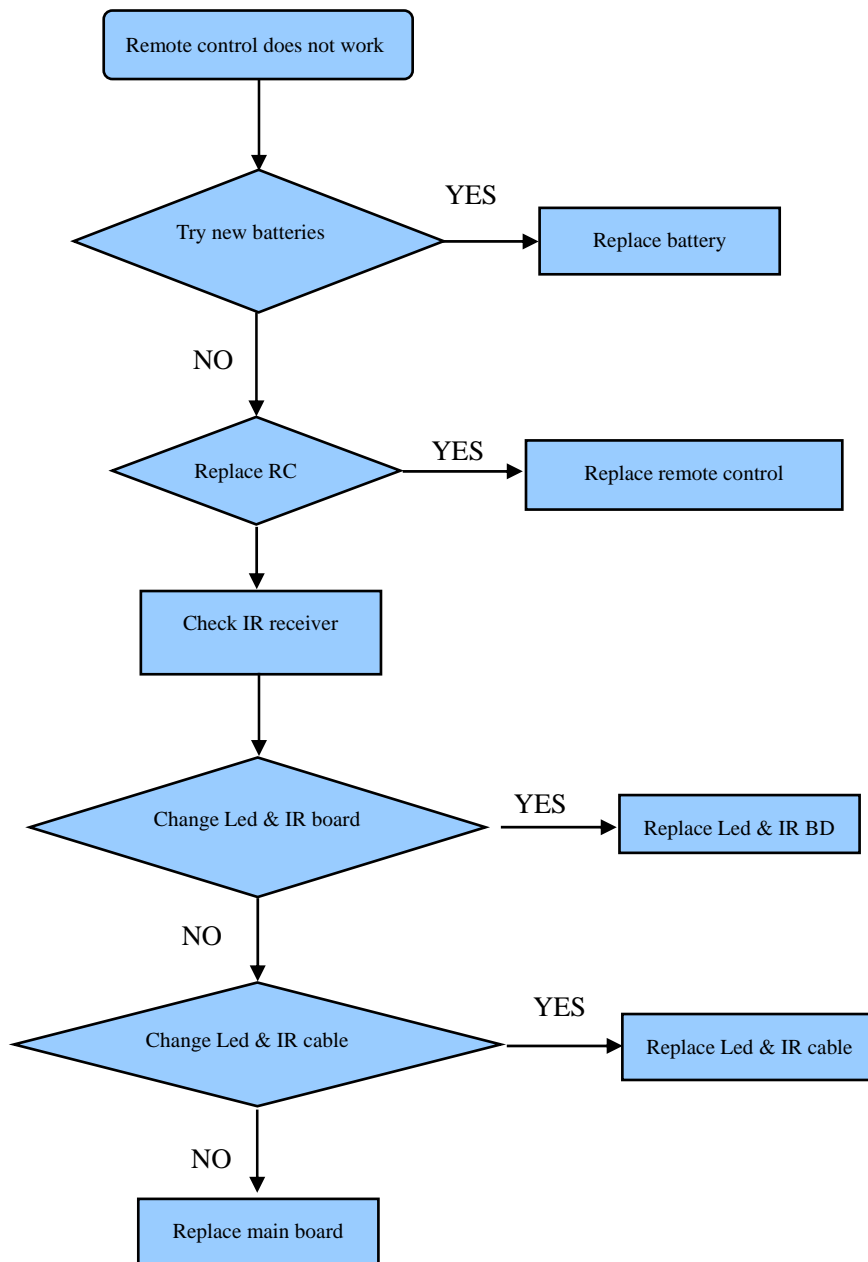
## 5. Trouble shooting

When there is something wrong with your TV, you can try turning off the TV and then restart it. You can also operate according to the follow chart. If the problems still can't be solved, please contact the profession technician.

No sound or picture	<ol style="list-style-type: none"><li>1. Check if the power line is in the outlet and if it has electricity.</li><li>2. Check if you have pressed Power button on the TV or Power button on the remote control</li><li>3. Check the setting of picture brightness and contrast.</li><li>4. Check the volume.</li></ol>
The picture is normal but there is no sound	<ol style="list-style-type: none"><li>1. Check the volume.</li><li>2. Check if Mute mode is set.</li></ol>
No picture and white or black picture	<ol style="list-style-type: none"><li>1. Adjust Picture Setting.</li><li>2. Check Color System.</li></ol>
The sound and picture are interfered	<ol style="list-style-type: none"><li>1 Try to find the appliance affecting TV set, and move it far away from the TV set.</li><li>2. Try to insert the power plug of the TV set into another outlet.</li></ol>
Unclear picture or picture with snow	<ol style="list-style-type: none"><li>1. Check the direction, position and connection of your antenna.</li><li>2. Adjust the direction of your antenna or reset or fine tune the channel</li></ol>
The remote control does not work	<ol style="list-style-type: none"><li>1. Change the batteries in the remote control.</li><li>2. Clean the upper side of the remote control (radiating window)</li><li>3. Check the contacting points of the batteries.</li><li>4. Check if there is obstruction between the remote control and the monitor.</li><li>5. Check if the batteries are correctly installed.</li></ol>
H/V strip or the picture shaking	Check if there is an interfering source nearby, such as appliance or electric tools.
The cabinet of the TV makes "Click" sound	makes "Click" sound"Sometimes the room temperature change can cause the television cabinet to inflate or contra, which makes this sound. This does not mean the TV breaks down.

---

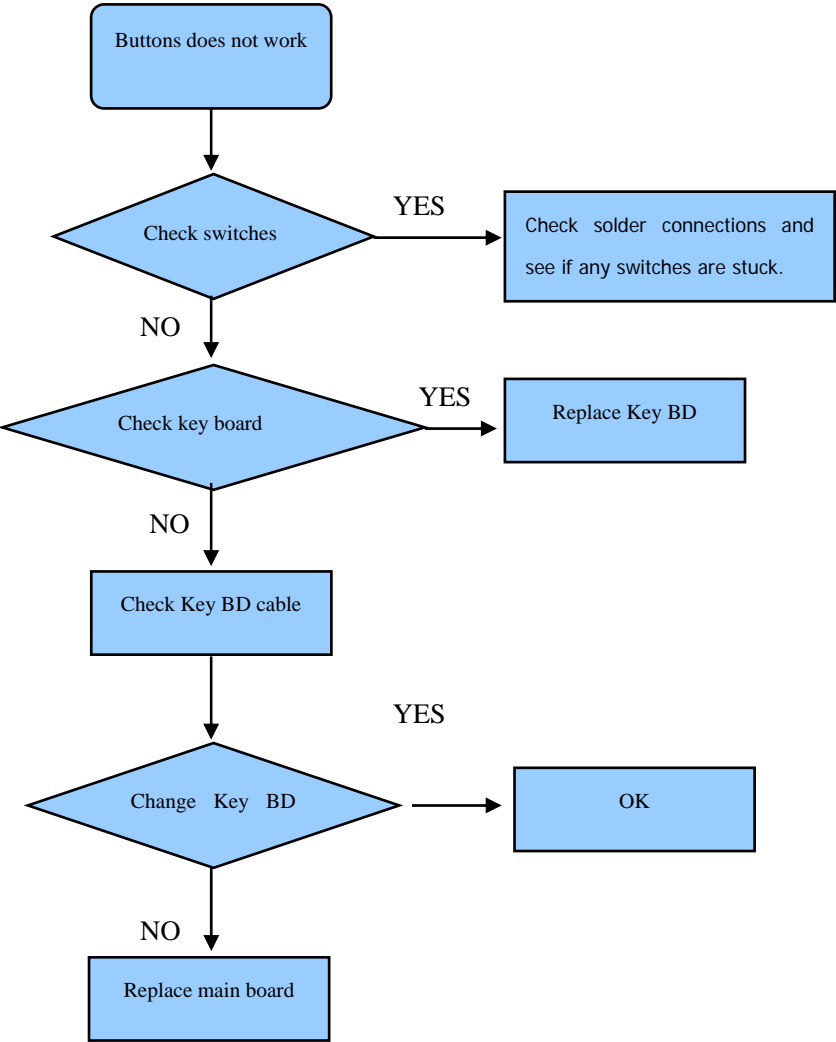
## 5.1 Troubleshooting for Remote Control





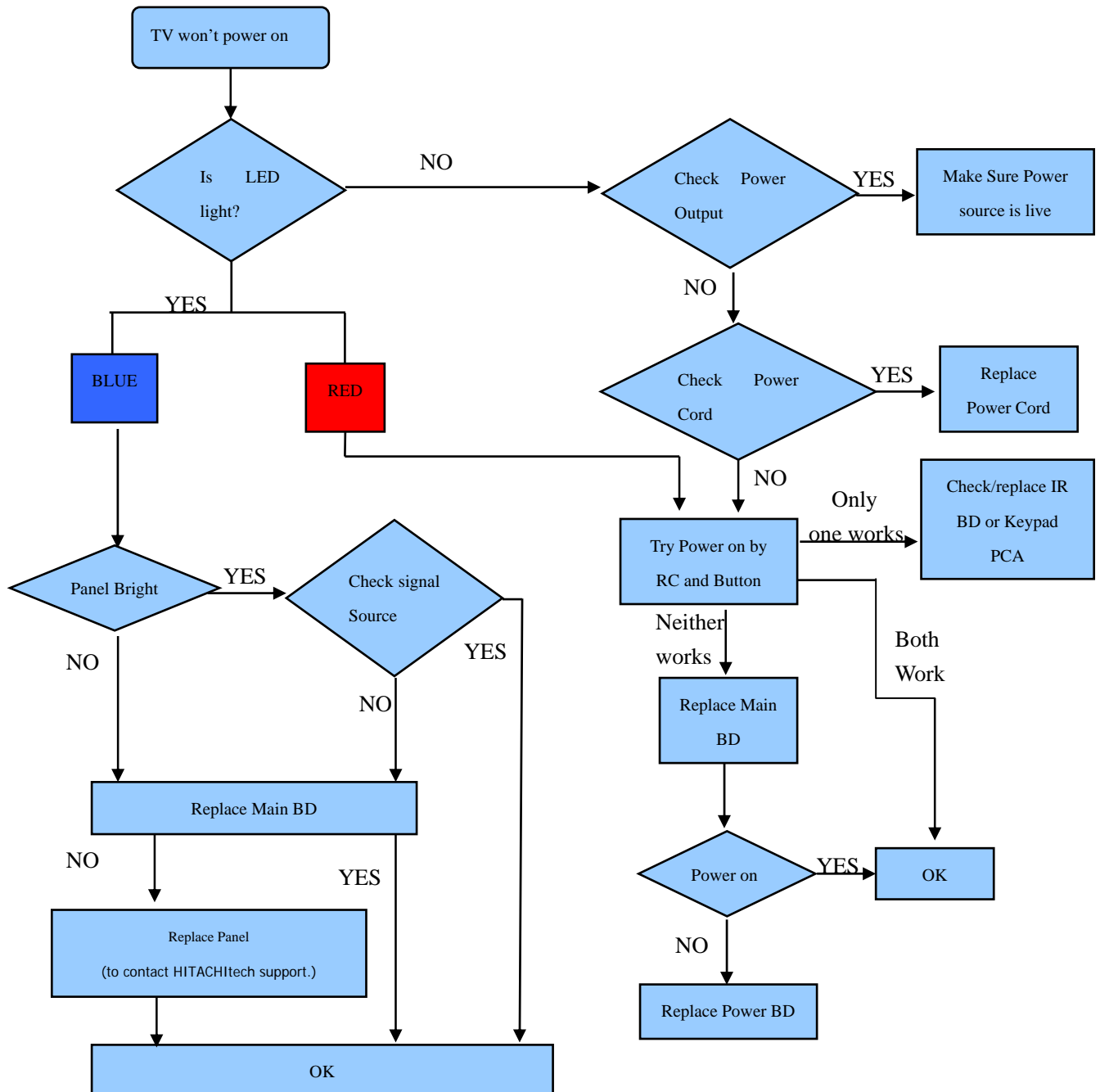
---

# 5.2 Troubleshooting for Function Key



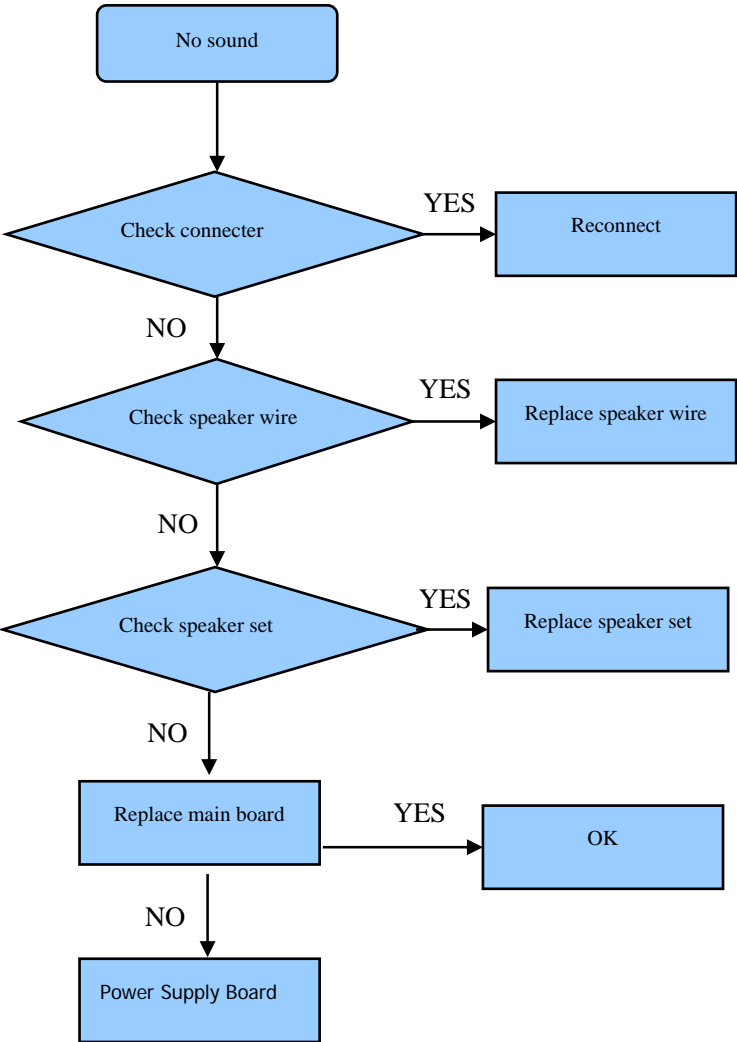
---

## 5.3 TV won't Power On



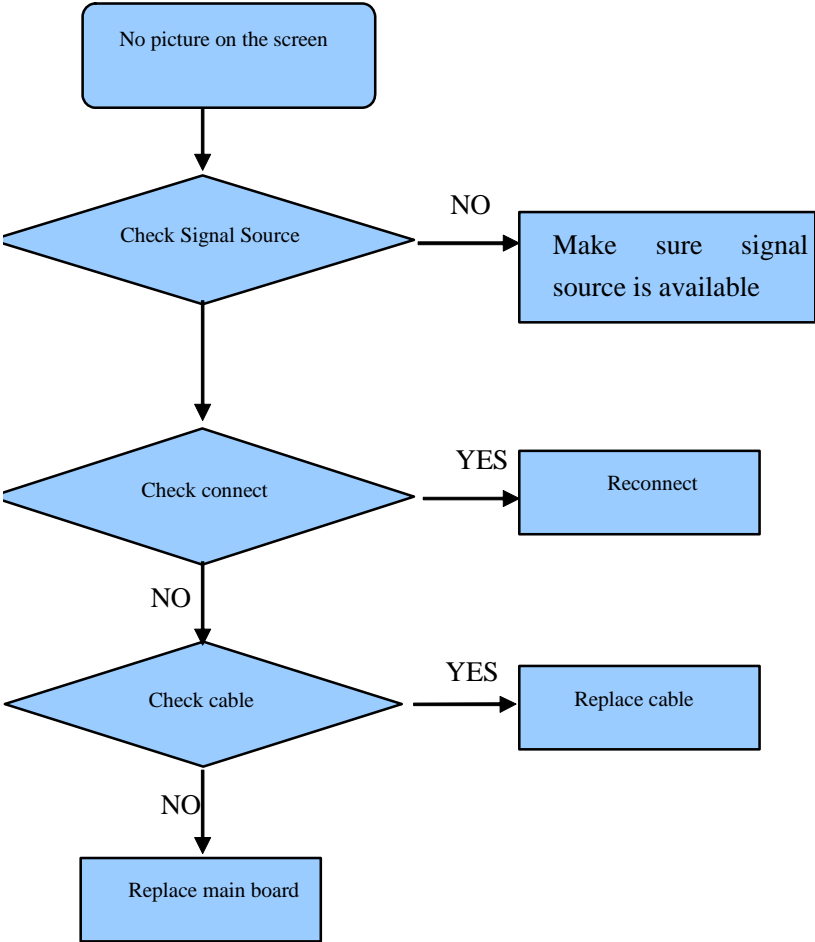
---

# 5.4 Troubleshooting for Audio



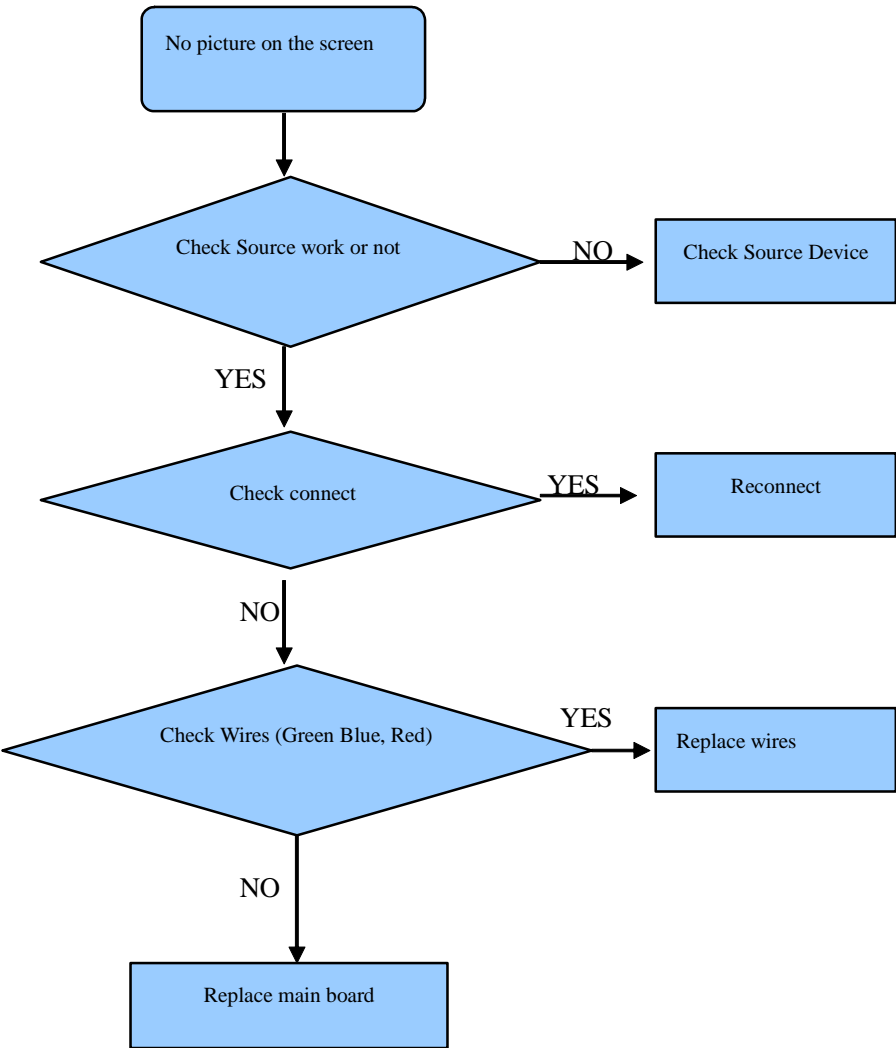
---

# 5.5 Troubleshooting for TV/VGA/HDMI input



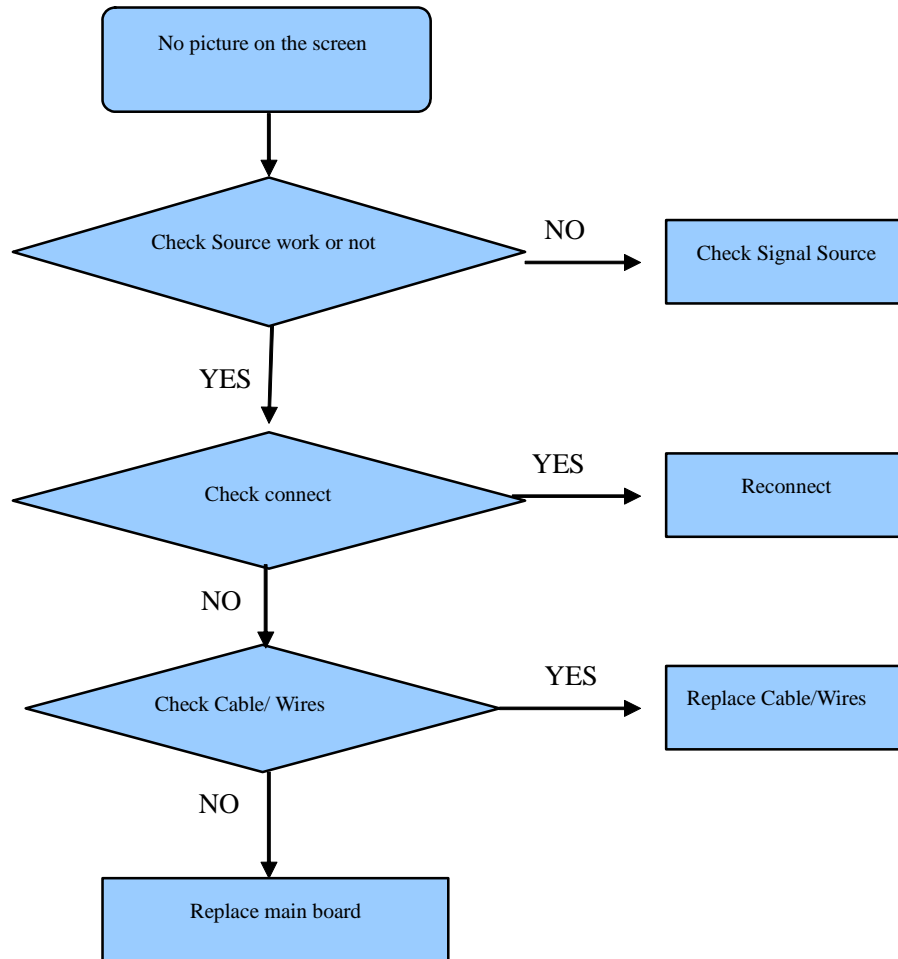
---

# 5.6 Troubleshooting for YPbPr input



---

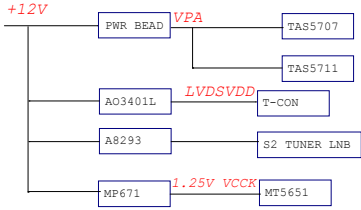
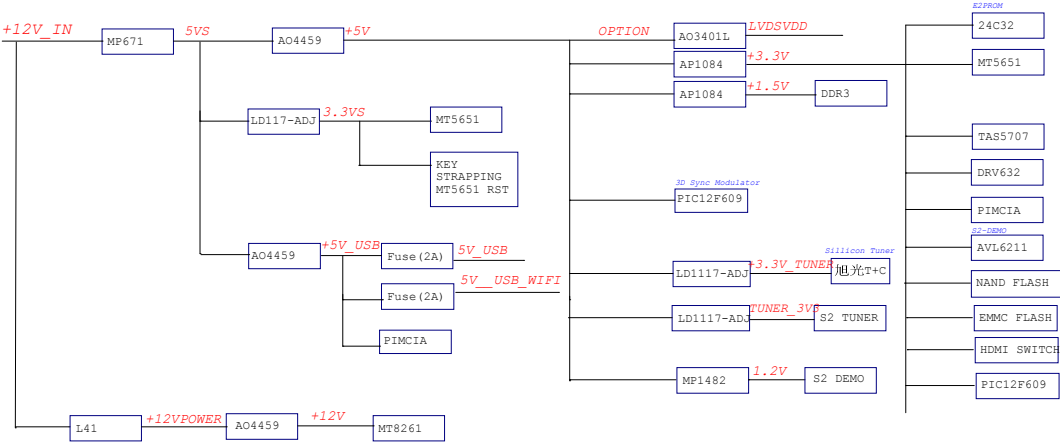
## 5.7 Troubleshooting for Video input



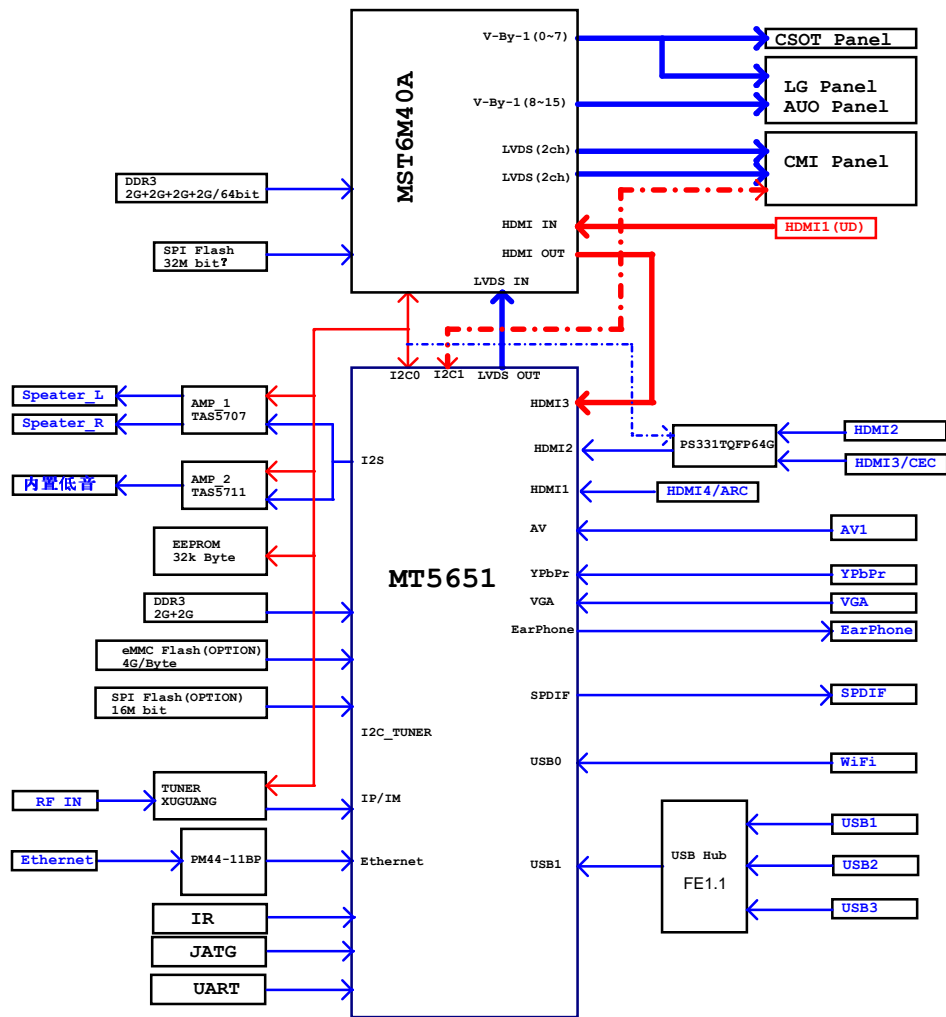
### 6. Signals Block Diagram and power assign:

### 7. Schematic circuit diagram

### 8. Explode View



Hisense Electric Co.,LTD		
Title: Power Tree		

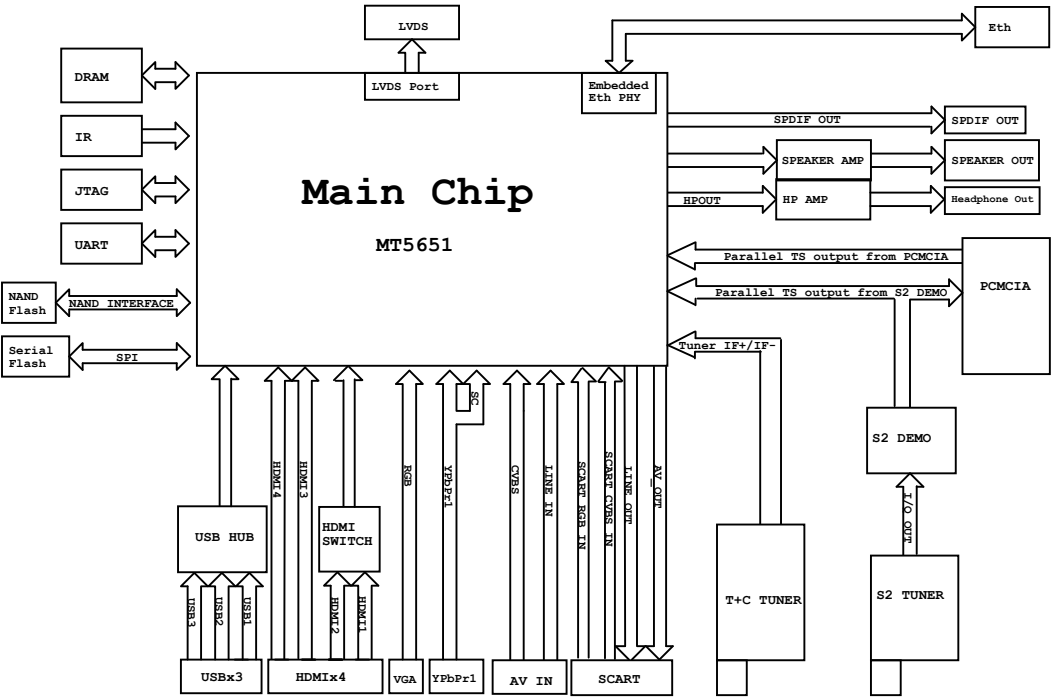




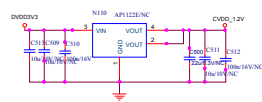
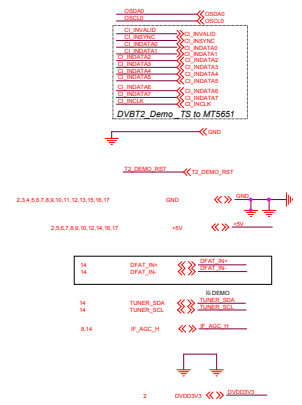
GPIO LIST

PIN NAME	GPIO Function	Function define
GPIO_0		LOCAL_DIM_EN
GPIO_1		PWR_FAULT#
GPIO_2		LVDS_PWR_EN
GPIO_3		EMMC_RST
GPIO_4		WIFI_EN
GPIO_5		
GPIO_6		3D_EN
GPIO_7		3D_SYNC_I
GPIO_8		3D_SYNC_O
GPIO_9		3D_OUT
GPIO_10		HPDET#
GPIO_11		SYS_EEPROM_WP
ADIN0		SCART_FS_SEL
ADIN1		ADIN0
ADIN2		ADIN1
ADIN3		LED_DX
ADIN4		POWER_LED
ADIN5		
OPCTRL0		strap[1] / Flash_WP#
OPCTRL1		BL_ON/OFF
OPCTRL2		AMP_MUTE
OPCTRL3		strap[2]
OPCTRL4		strap[3] RST AMP
OPWM0		S2 DEMO_RST
OPWM1		MEMC_ON/OFF
OPWM2		BL_DIMMING
OPWM3		MUTE_HP
OPWM4		3D_CTRL
OPWM5		LED2/PHYAD2
OPWM6		LED3/PHYAD3
PACLE		strap[0]

Block Diagram

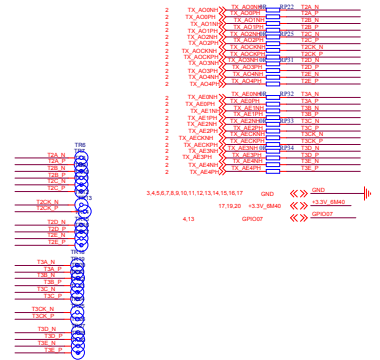
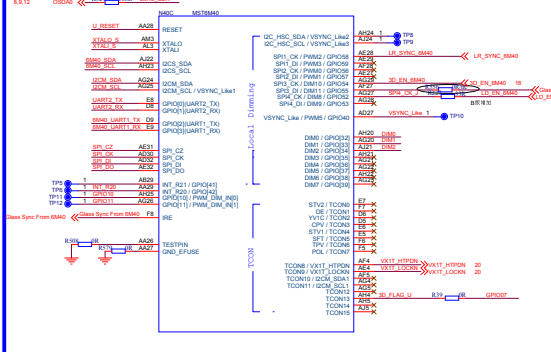
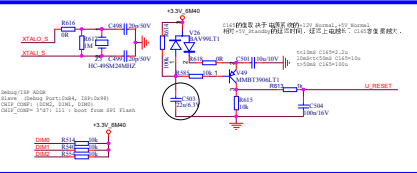
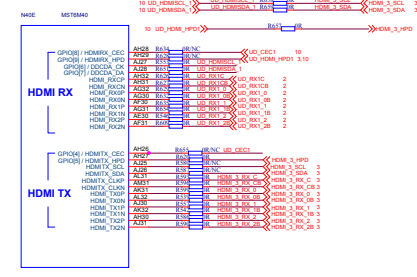


Main board:5784

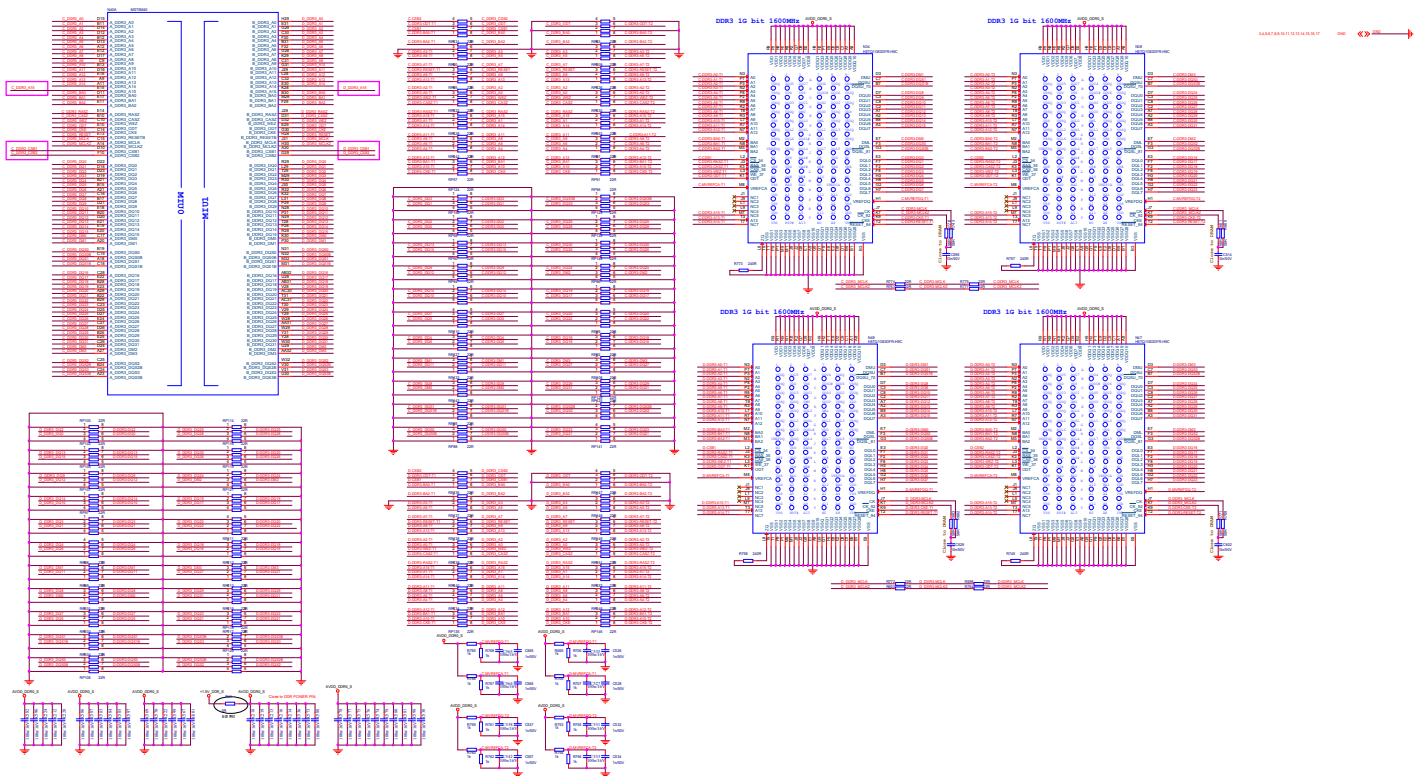
[illegible]

Main board:5784

## HDMI

[illegible]

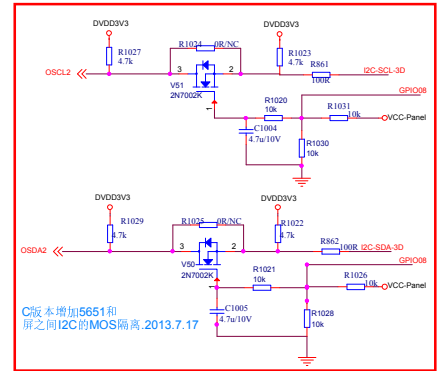
Main board:5784



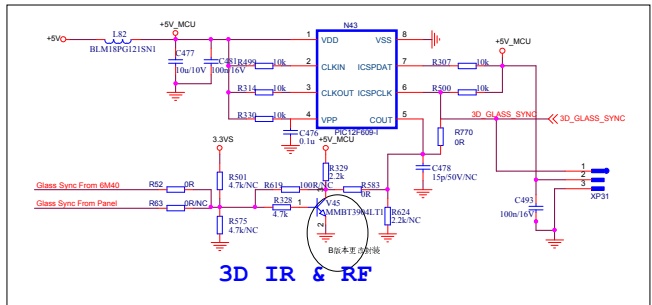
Main board:5784



## VB1 for SAMSUNG 75



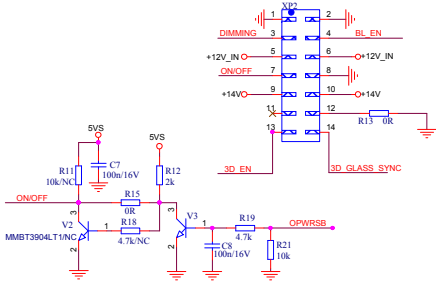
2 DVD03V3 << >> DVD03V3



Main board:5784

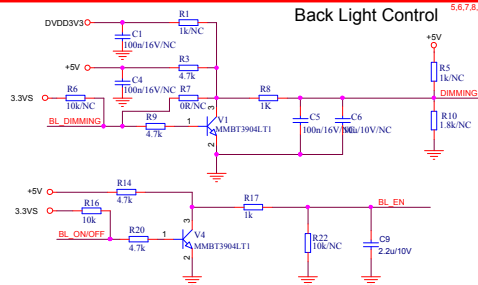
# MAIN POWER

## 兼容14Pin双排插座



OPWRSB  
HIGH => OPEN FRAME POWER OFF  
LOW => OPEN FRAME POWER ON

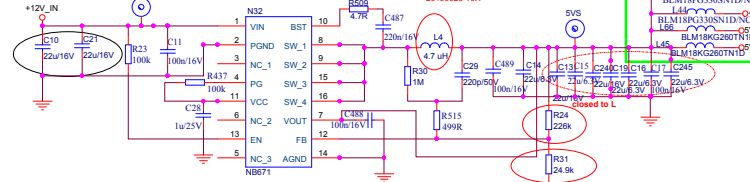
# Back Light Control



3.4,5,6,7,8,9,10,11,12,13,14,15,16,17,18,19,20,21,22,23,24,25,26,27,28,29,30,31,32,33,34,35,36,37,38,39,40,41,42,43,44,45,46,47,48,49,50,51,52,53,54,55,56,57,58,59,60,61,62,63,64,65,66,67,68,69,70,71,72,73,74,75,76,77,78,79,80,81,82,83,84,85,86,87,88,89,90,91,92,93,94,95,96,97,98,99,100	3.4,5,6,7,8,9,10,11,12,13,14,15,16,17,18,19,20,21,22,23,24,25,26,27,28,29,30,31,32,33,34,35,36,37,38,39,40,41,42,43,44,45,46,47,48,49,50,51,52,53,54,55,56,57,58,59,60,61,62,63,64,65,66,67,68,69,70,71,72,73,74,75,76,77,78,79,80,81,82,83,84,85,86,87,88,89,90,91,92,93,94,95,96,97,98,99,100
---	---

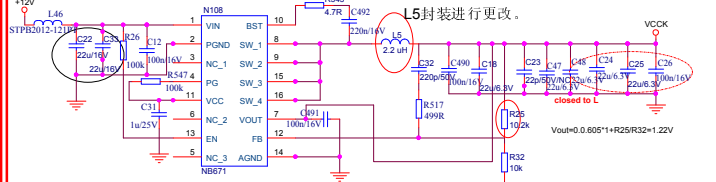
# 12V-->5VS

## Buck Converter 5A

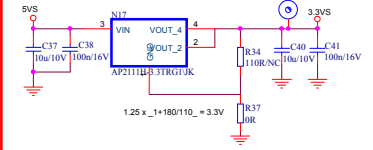


# CORE POWER 1.2V

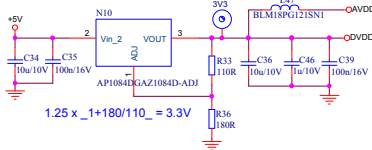
## Buck Converter MAX 3300mA



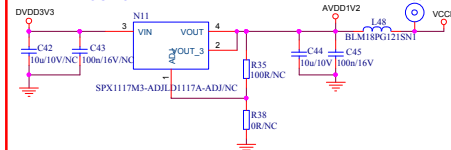
# STANDBY POWER 3V3SB MAX 15mA



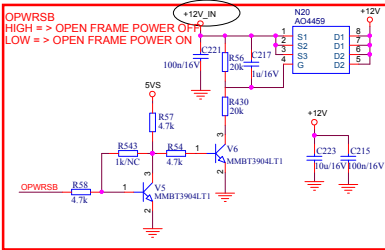
# DIGITAL POWER DVDD3V3 MAX 225mA



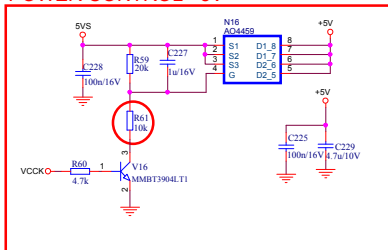
# ANALOG POWER AVDD1V2



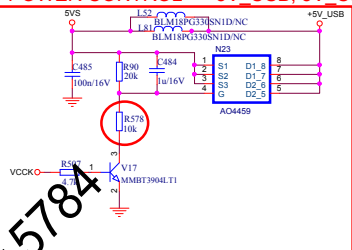
# POWER CONTROL +12V



# POWER CONTROL +5V



# POWER CONTROL +5V\_USB, 5V\_CI



Hisense Electric Co.,LTD			
POWER AND INVERTOR			
Size	Document Number	Rev	
A3	MTS325	1.0	
Date:	Friday, November 08, 2013	Sheet	2 of 17

Main board:5784

XP3

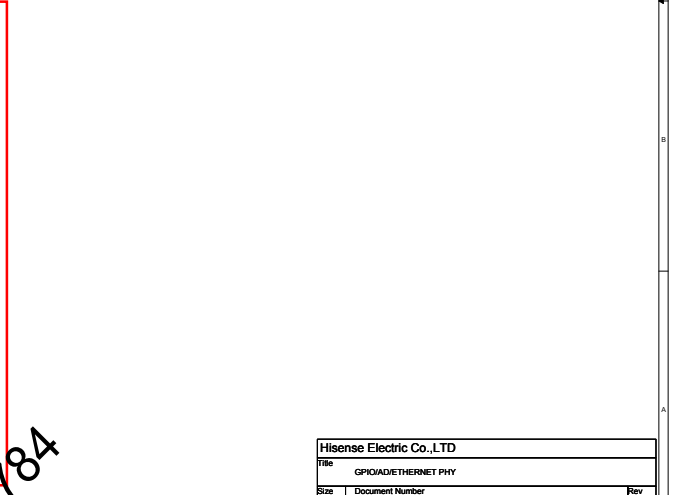
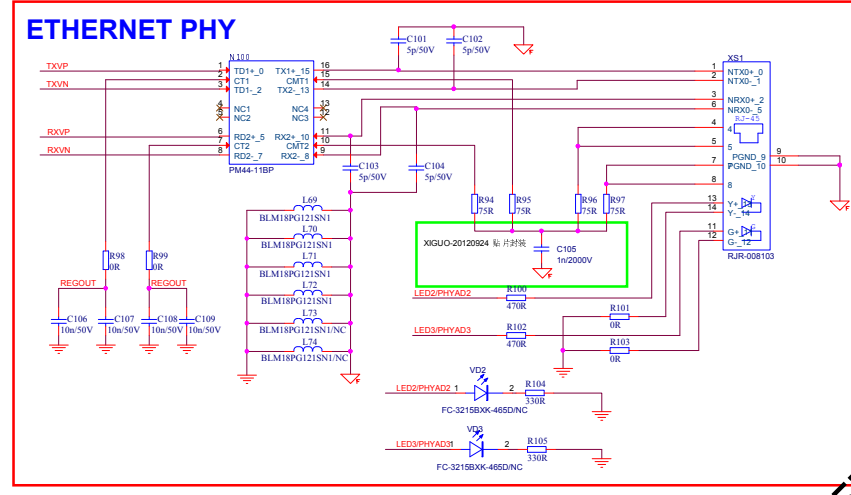
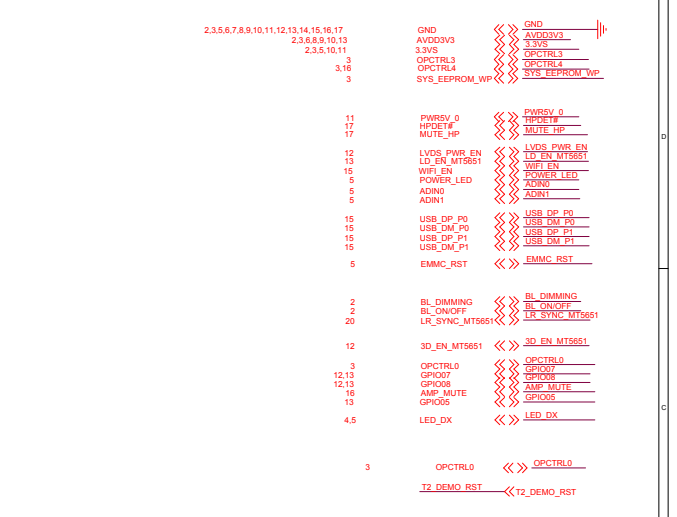
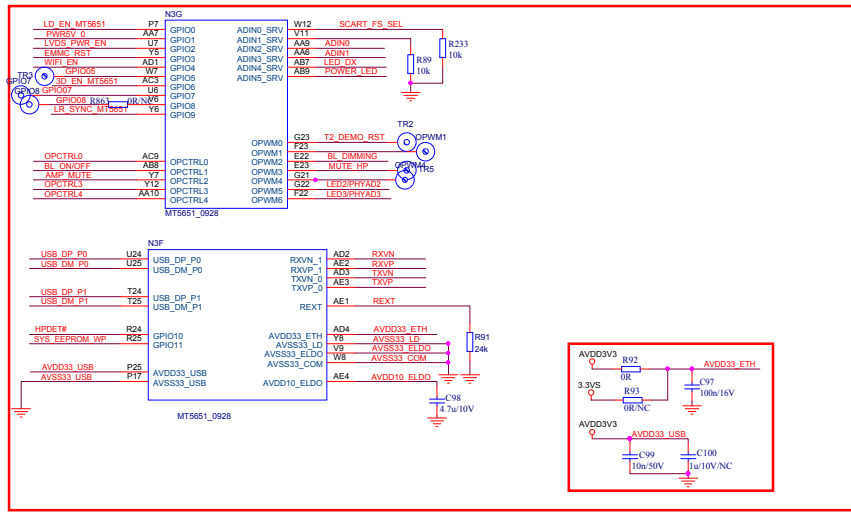
CE mode = 270° + serial boot	0	1
CE mode = 270° + ROM boot	0	0
CE mode = 270° + ROM + EMC	0	0

3

1

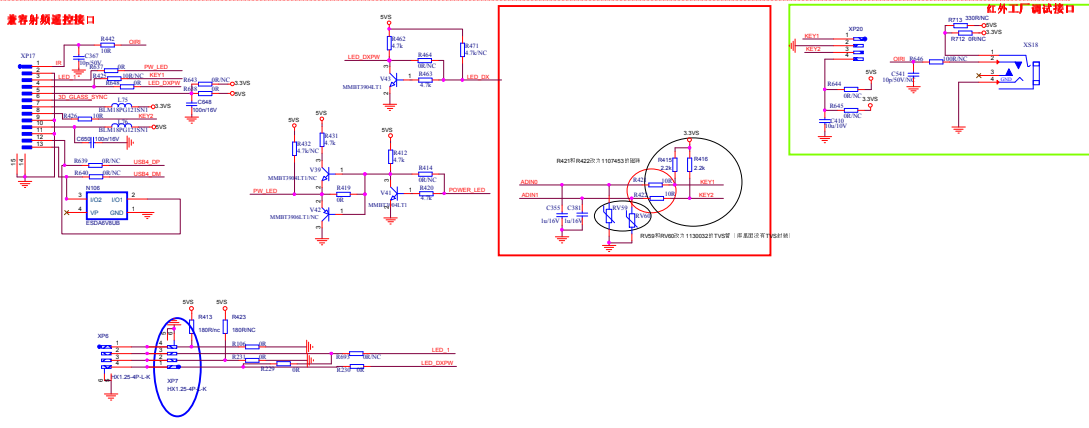
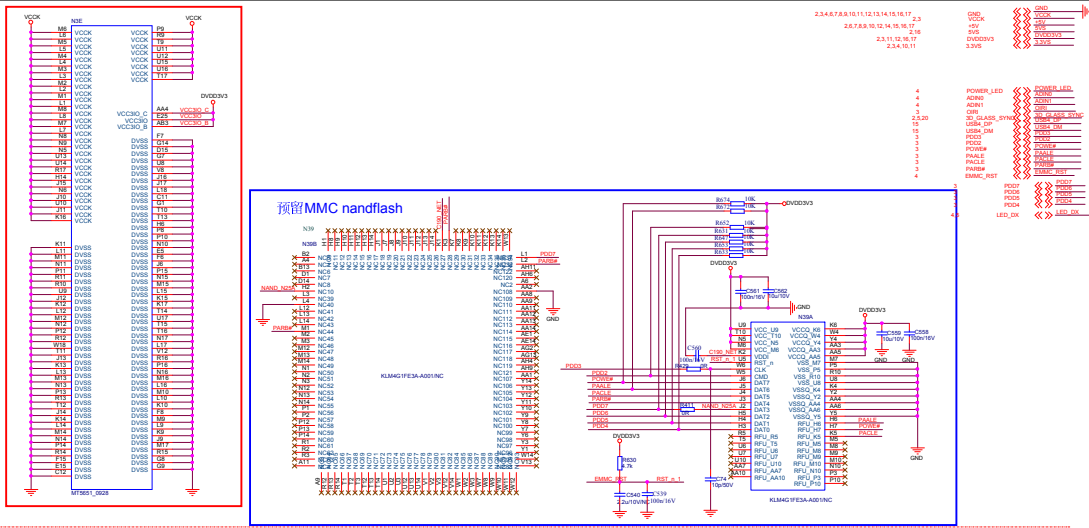
Main board: 5784



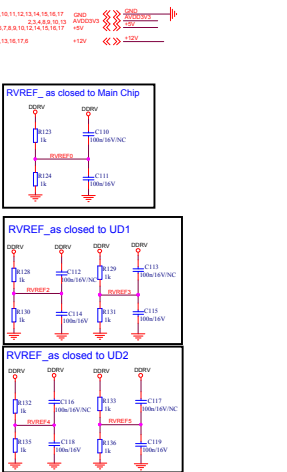
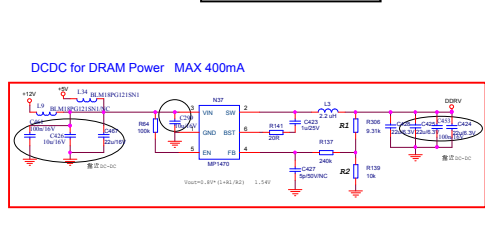
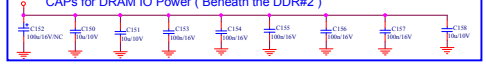
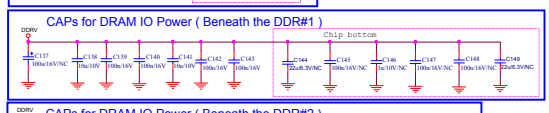
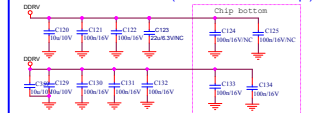
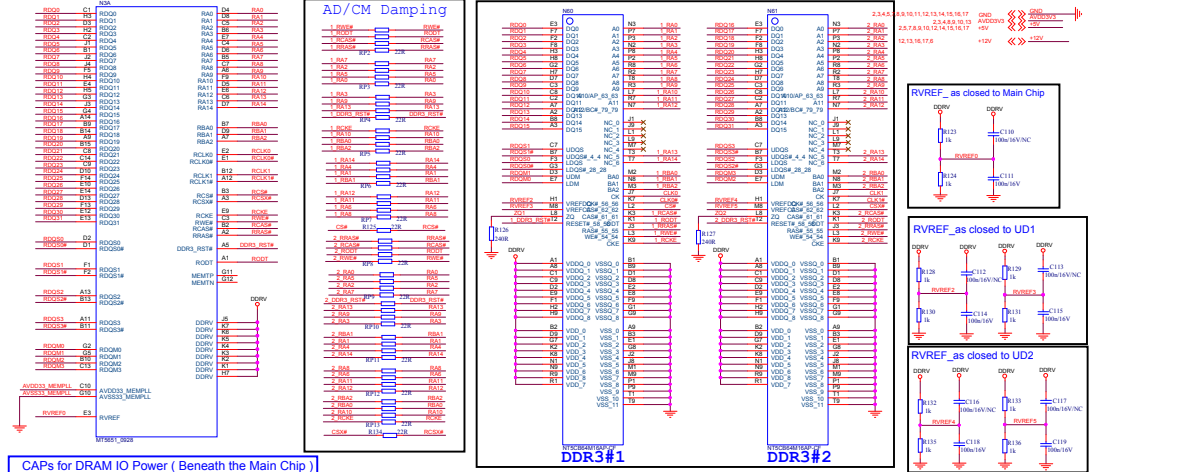


Hisense Electric Co.,LTD			
Title GPIOAD/ETHERNET PHY			
Size Document Number			
A3 MTS325			
Date Friday, November 08, 2013			
Sheet 4 of 17			
Rev 1.0			

Main board:5784

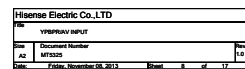


Main board:5784



Main board:5784

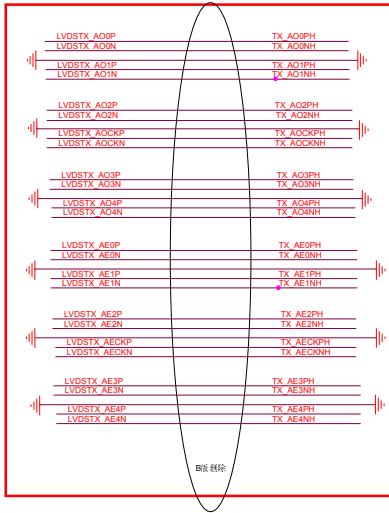
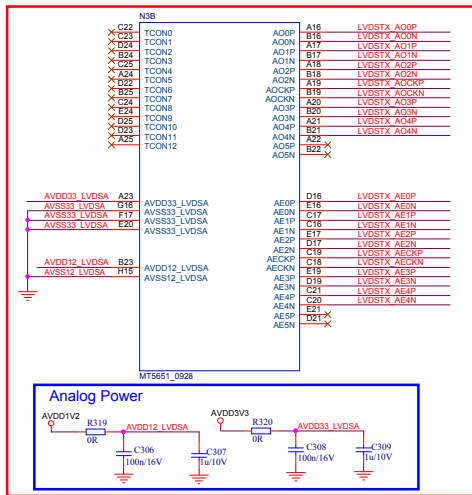




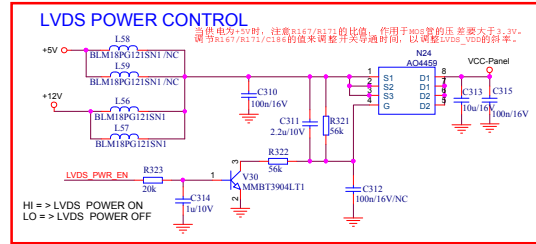
Main board:5784







TX_A00PH	TX_A00NH	2,3,4,5,6,7,8,9,10,11,13,14,15,16,17	GND	AVDD1V2
TX_A01PH	TX_A01NH	2,5,6,7,8,9,10,14,15,16,17	+5V	AVDD1V2
TX_A02PH	TX_A02NH	2,8,10	+5V	AVDD1V2
TX_A03PH	TX_A03NH	2,3,4,6,8,9,10,13	AVDD03V3	AVDD03V3
TX_A04PH	TX_A04NH	2,13,16,17	+12V	+12V
TX_A05PH	TX_A05NH			
TX_A06PH	TX_A06NH			
TX_A07PH	TX_A07NH			
TX_A08PH	TX_A08NH			
TX_A09PH	TX_A09NH			
TX_A10PH	TX_A10NH			
TX_A11PH	TX_A11NH			
TX_A12PH	TX_A12NH			
TX_A13PH	TX_A13NH			
TX_A14PH	TX_A14NH			
TX_A15PH	TX_A15NH			
TX_A16PH	TX_A16NH			
TX_A17PH	TX_A17NH			
TX_A18PH	TX_A18NH			
TX_A19PH	TX_A19NH			
TX_A20PH	TX_A20NH			
TX_A21PH	TX_A21NH			
TX_A22PH	TX_A22NH			
TX_A23PH	TX_A23NH			
TX_A24PH	TX_A24NH			
TX_A25PH	TX_A25NH			
TX_A26PH	TX_A26NH			
TX_A27PH	TX_A27NH			
TX_A28PH	TX_A28NH			
TX_A29PH	TX_A29NH			
TX_A30PH	TX_A30NH			
TX_A31PH	TX_A31NH			
TX_A32PH	TX_A32NH			
TX_A33PH	TX_A33NH			
TX_A34PH	TX_A34NH			
TX_A35PH	TX_A35NH			
TX_A36PH	TX_A36NH			
TX_A37PH	TX_A37NH			
TX_A38PH	TX_A38NH			
TX_A39PH	TX_A39NH			
TX_A40PH	TX_A40NH			
TX_A41PH	TX_A41NH			
TX_A42PH	TX_A42NH			
TX_A43PH	TX_A43NH			
TX_A44PH	TX_A44NH			
TX_A45PH	TX_A45NH			
TX_A46PH	TX_A46NH			
TX_A47PH	TX_A47NH			
TX_A48PH	TX_A48NH			
TX_A49PH	TX_A49NH			
TX_A50PH	TX_A50NH			
TX_A51PH	TX_A51NH			
TX_A52PH	TX_A52NH			
TX_A53PH	TX_A53NH			
TX_A54PH	TX_A54NH			
TX_A55PH	TX_A55NH			
TX_A56PH	TX_A56NH			
TX_A57PH	TX_A57NH			
TX_A58PH	TX_A58NH			
TX_A59PH	TX_A59NH			
TX_A60PH	TX_A60NH			
TX_A61PH	TX_A61NH			
TX_A62PH	TX_A62NH			
TX_A63PH	TX_A63NH			
TX_A64PH	TX_A64NH			
TX_A65PH	TX_A65NH			
TX_A66PH	TX_A66NH			
TX_A67PH	TX_A67NH			
TX_A68PH	TX_A68NH			
TX_A69PH	TX_A69NH			
TX_A70PH	TX_A70NH			
TX_A71PH	TX_A71NH			
TX_A72PH	TX_A72NH			
TX_A73PH	TX_A73NH			
TX_A74PH	TX_A74NH			
TX_A75PH	TX_A75NH			
TX_A76PH	TX_A76NH			
TX_A77PH	TX_A77NH			
TX_A78PH	TX_A78NH			
TX_A79PH	TX_A79NH			
TX_A80PH	TX_A80NH			
TX_A81PH	TX_A81NH			
TX_A82PH	TX_A82NH			
TX_A83PH	TX_A83NH			
TX_A84PH	TX_A84NH			
TX_A85PH	TX_A85NH			
TX_A86PH	TX_A86NH			
TX_A87PH	TX_A87NH			
TX_A88PH	TX_A88NH			
TX_A89PH	TX_A89NH			
TX_A90PH	TX_A90NH			
TX_A91PH	TX_A91NH			
TX_A92PH	TX_A92NH			
TX_A93PH	TX_A93NH			
TX_A94PH	TX_A94NH			
TX_A95PH	TX_A95NH			
TX_A96PH	TX_A96NH			
TX_A97PH	TX_A97NH			
TX_A98PH	TX_A98NH			
TX_A99PH	TX_A99NH			



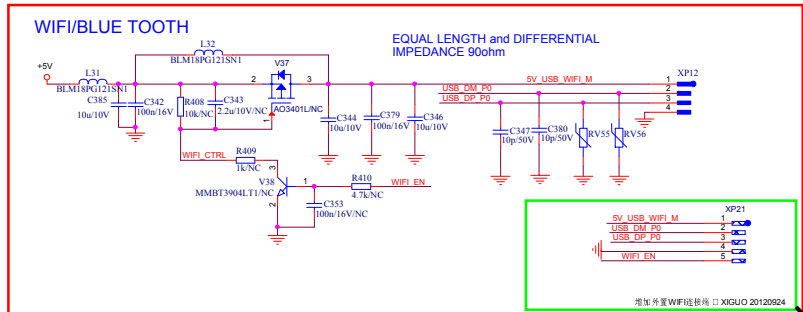
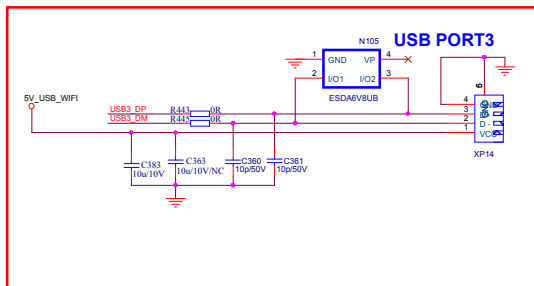
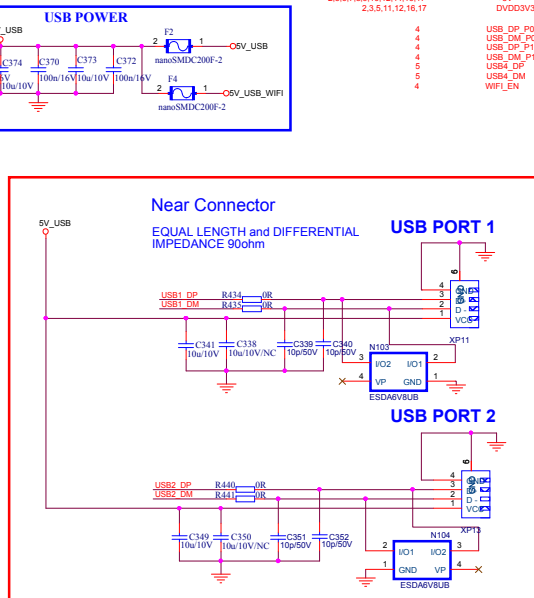
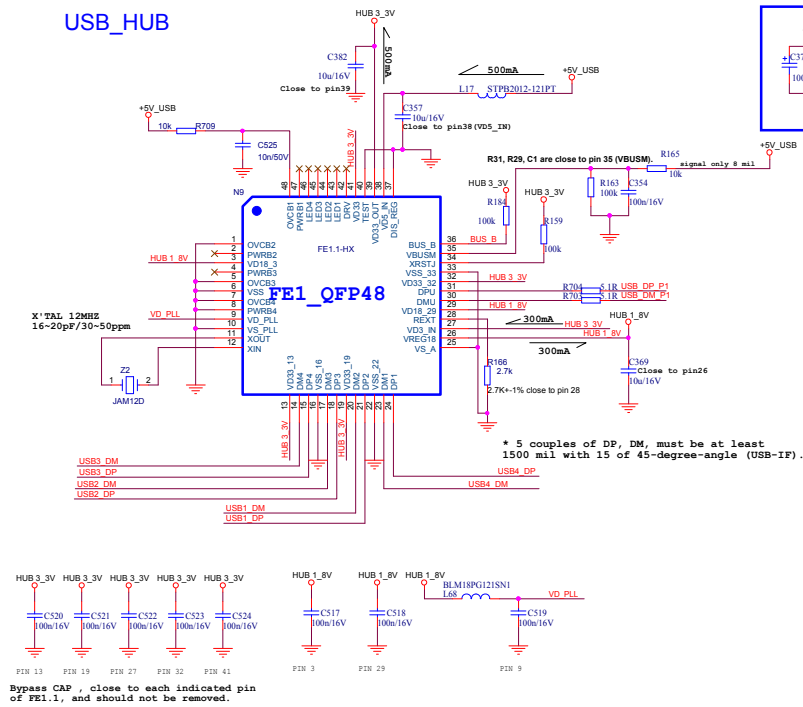
Main board:5784

Hisense Electric Co.,LTD			
Title			
LVDS POWER CONTROL			
Size	Document Number	Rev	
A3	MT5651	1.0	
Date:	Friday, November 08, 2013	Sheet	12 of 17





## USB\_HUB



Hisense Electric Co.,LTD		
Title USB/WIFI		
Size A3	Document Number MT5325	Rev 1.0
Date:	Friday, November 08, 2013	Sheet 15 of 17

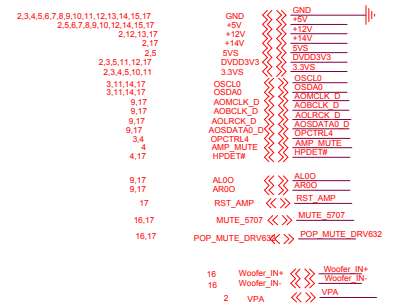
5V	USB	WIFI	M	1	
USB	DM	PO		2	🔌
USB	DP	PO		3	🔌
WIFI	EN			4	🔌
				5	🔌

增加外置WIFI连接 □ XIGUO 20120924

▲

Main board: 5784

I2C Address  
= 0x6A

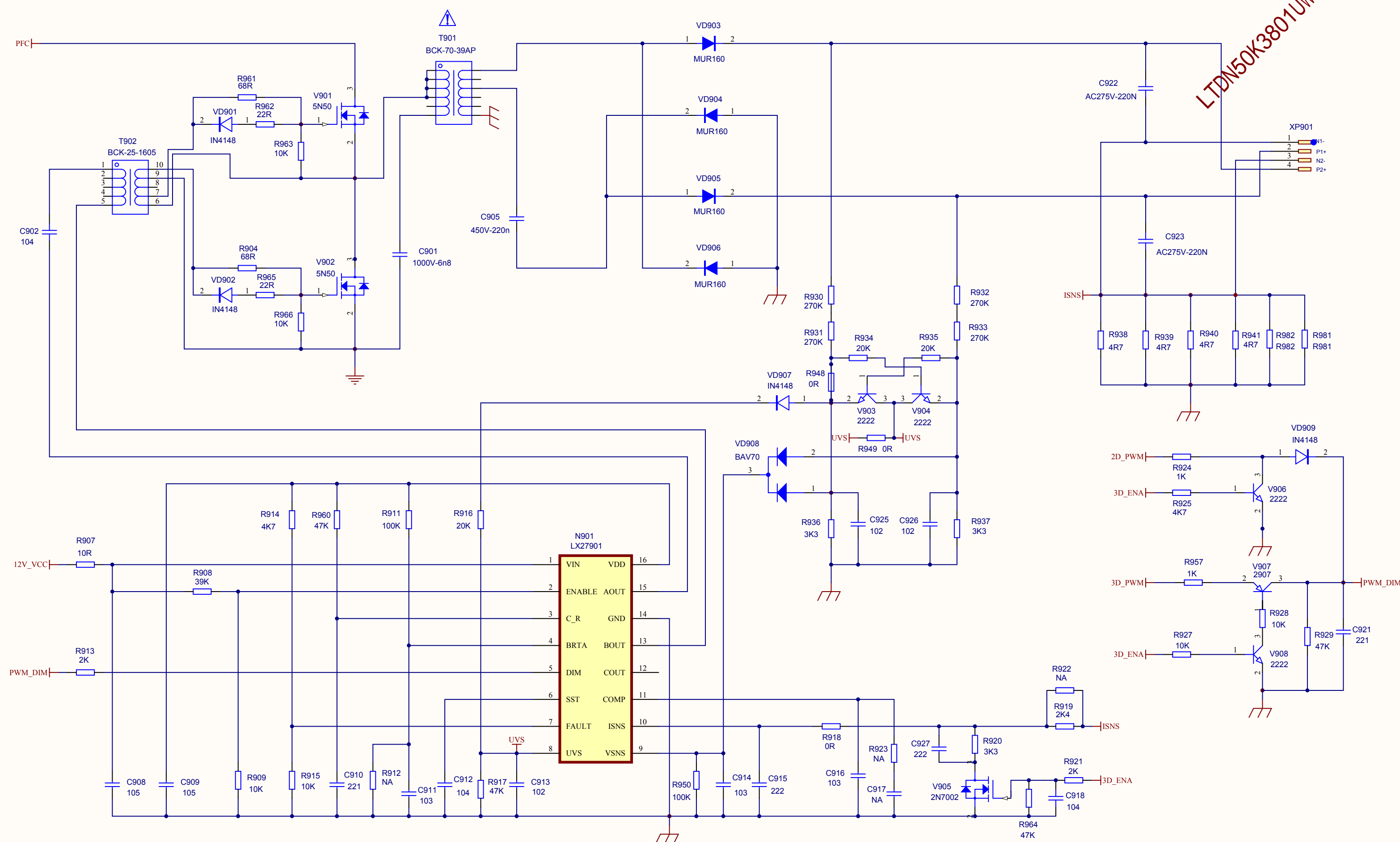
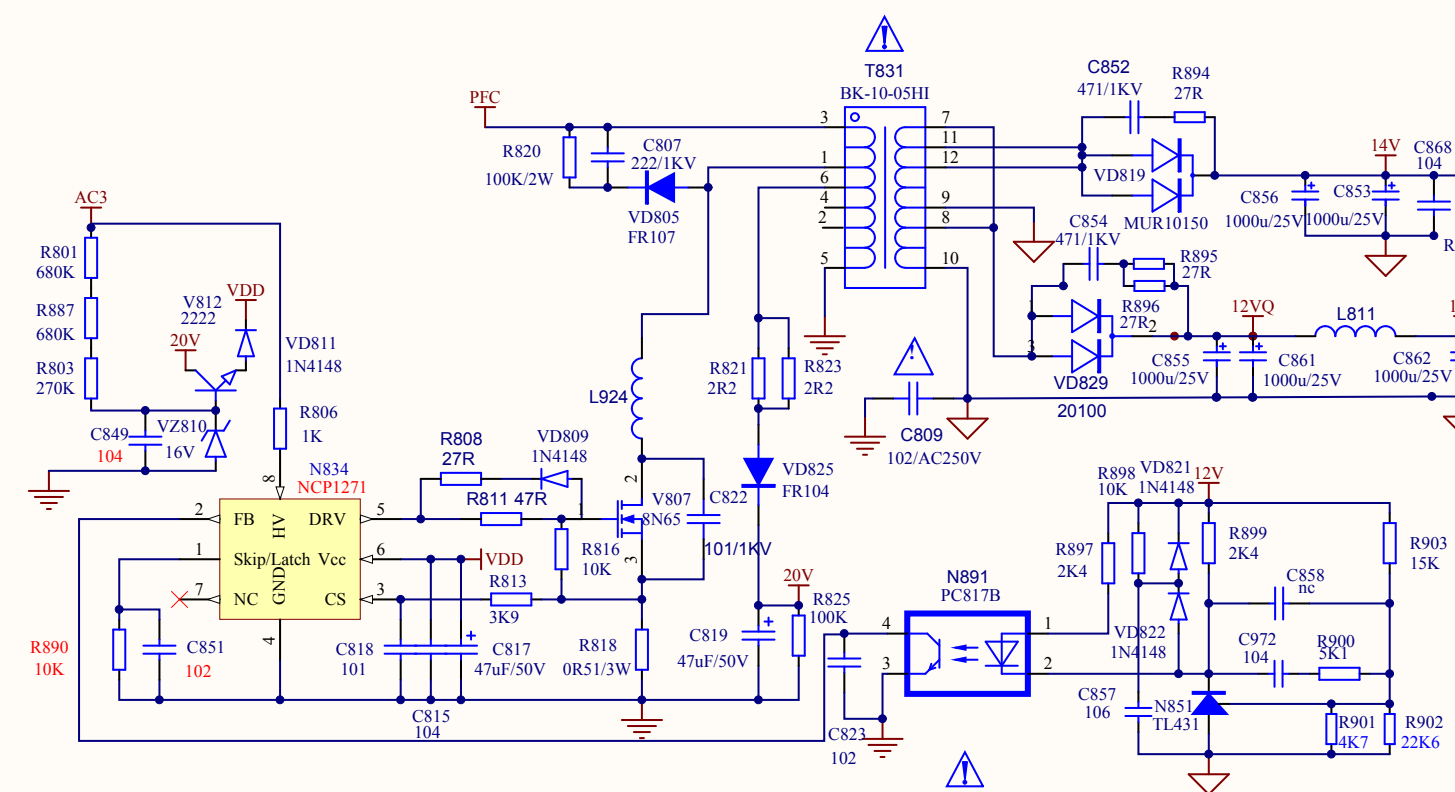
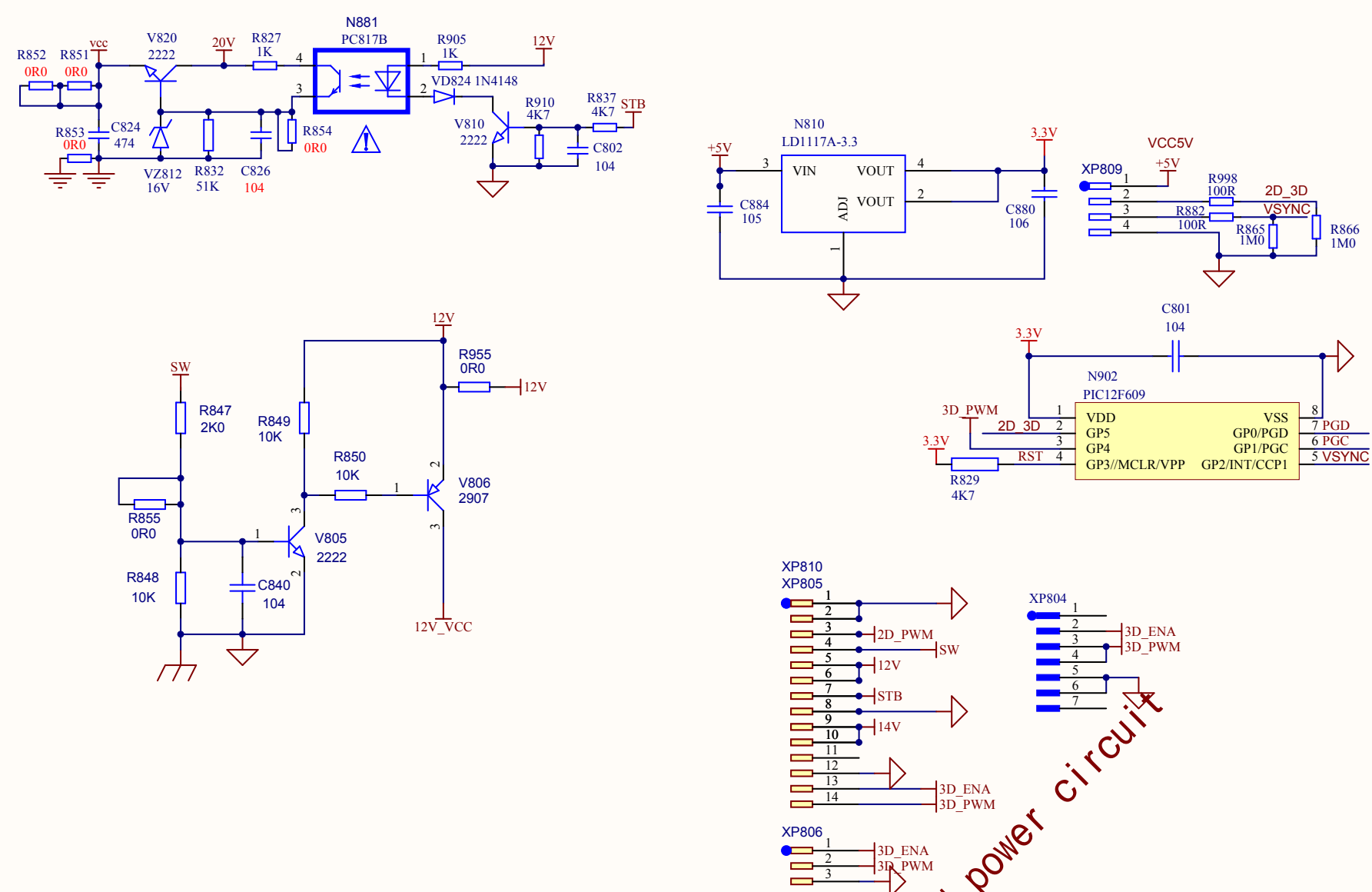
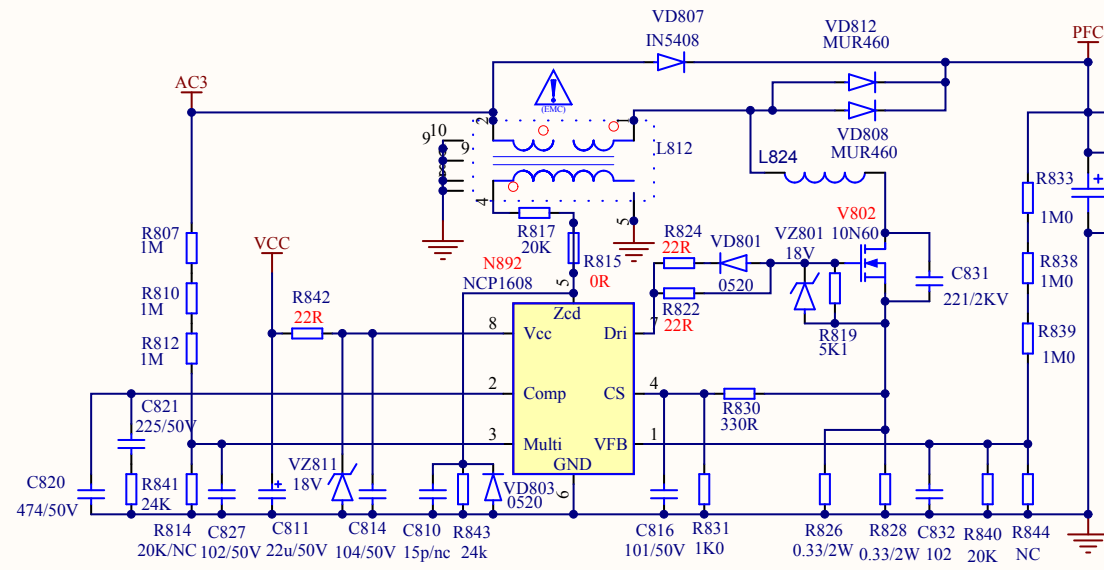
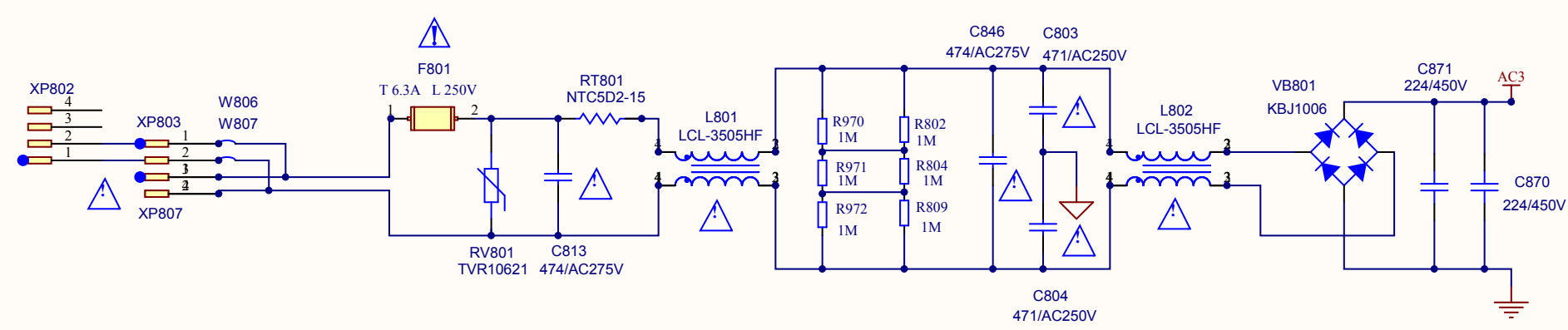


Hisense Electric Co.,LTD			
Title SPEAKER/MUTE			
Size A3	Document Number MT5311G		Rev 1.0
Date:	Friday, November 08, 2013	Sheet	16 of 17

2S 器件一定要靠近 功放pin脚  
0130326 by tony

Main board:5784











22	23	24	25	26	27
更正版本	更正内容		更正人		更正日期
更正	W.1				
更改	W.2				
删除	W.3				
	W.4				
	W.5				