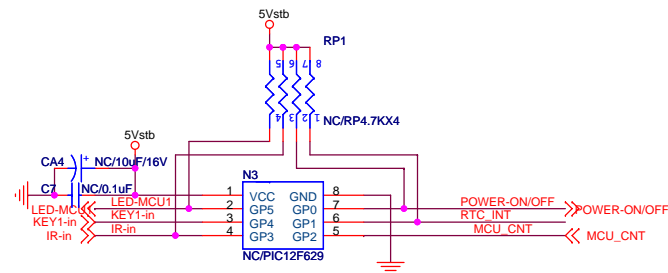
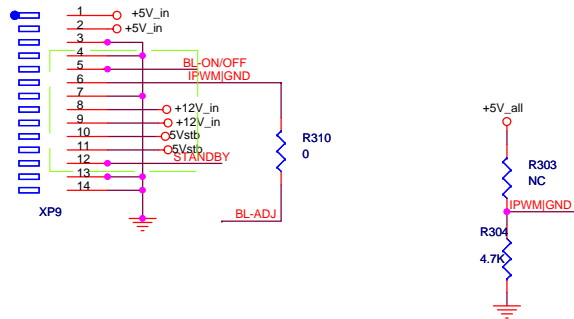
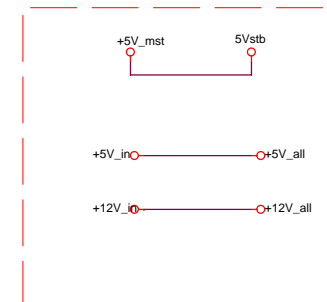
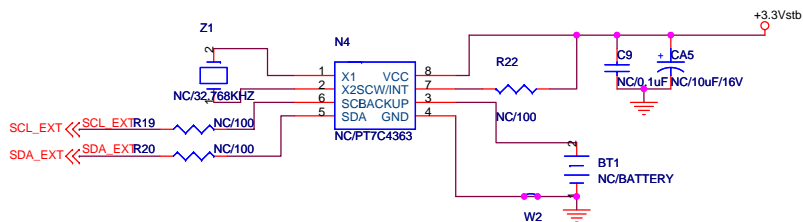
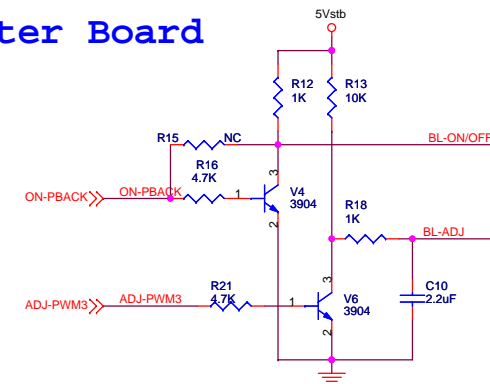


更改部分



TO Inverter Board



1、系统供电/控制信号部分电路

$$0.81 \times (1 + R_{up}/R_{down}) = 1.8V - V_{DD} = 1.8V - 1.2V = 0.6V$$

Vcc3.3for MST9E19A analog

Vcc1.8 for MST9E19A

+3.3AVDD for AVDD_HDMI

+3.3AVDD for AVDD_AU

+3.3AVDD for AVDDA

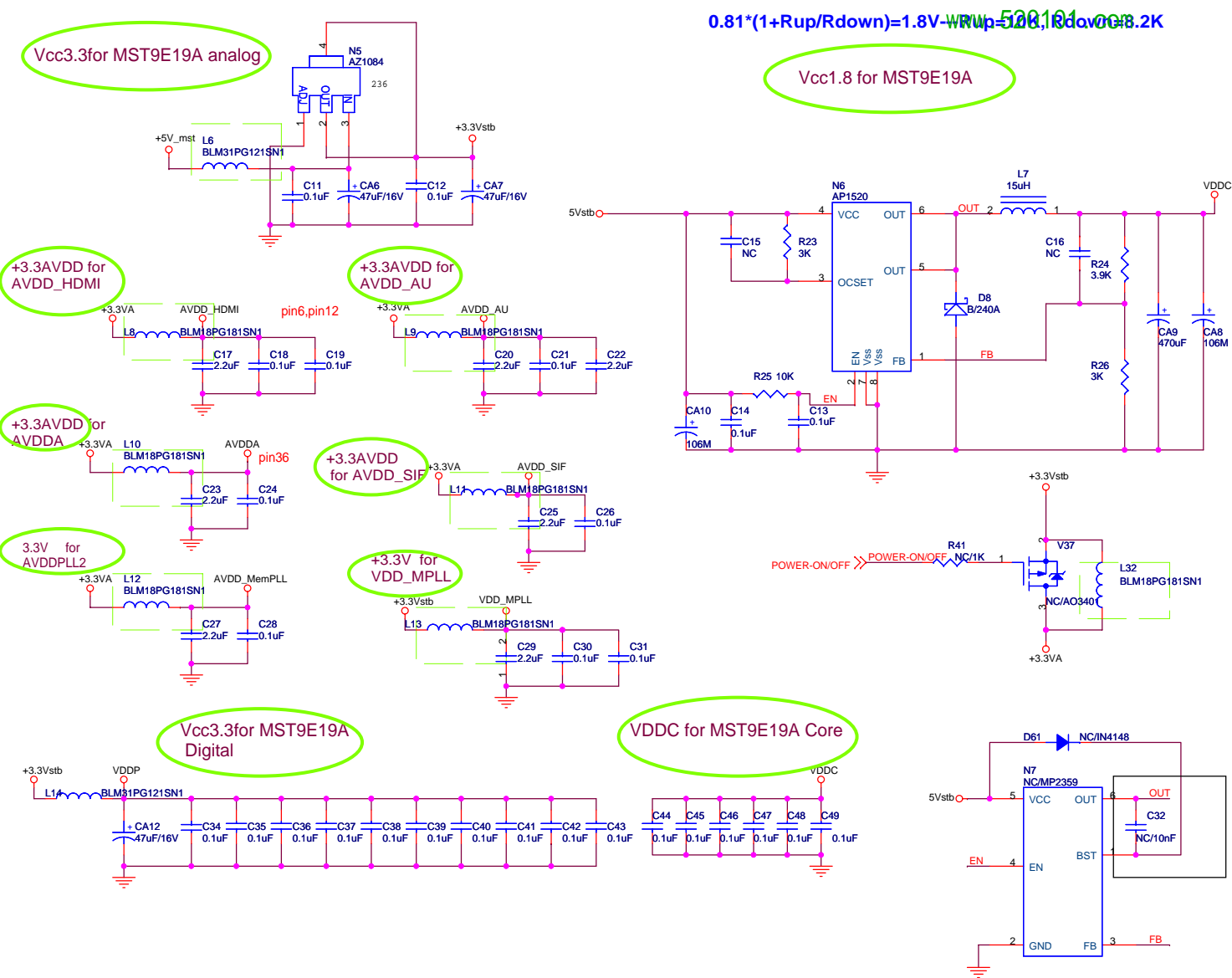
+3.3AVDD for AVDD_SIF

3.3V for AVDDPLL2

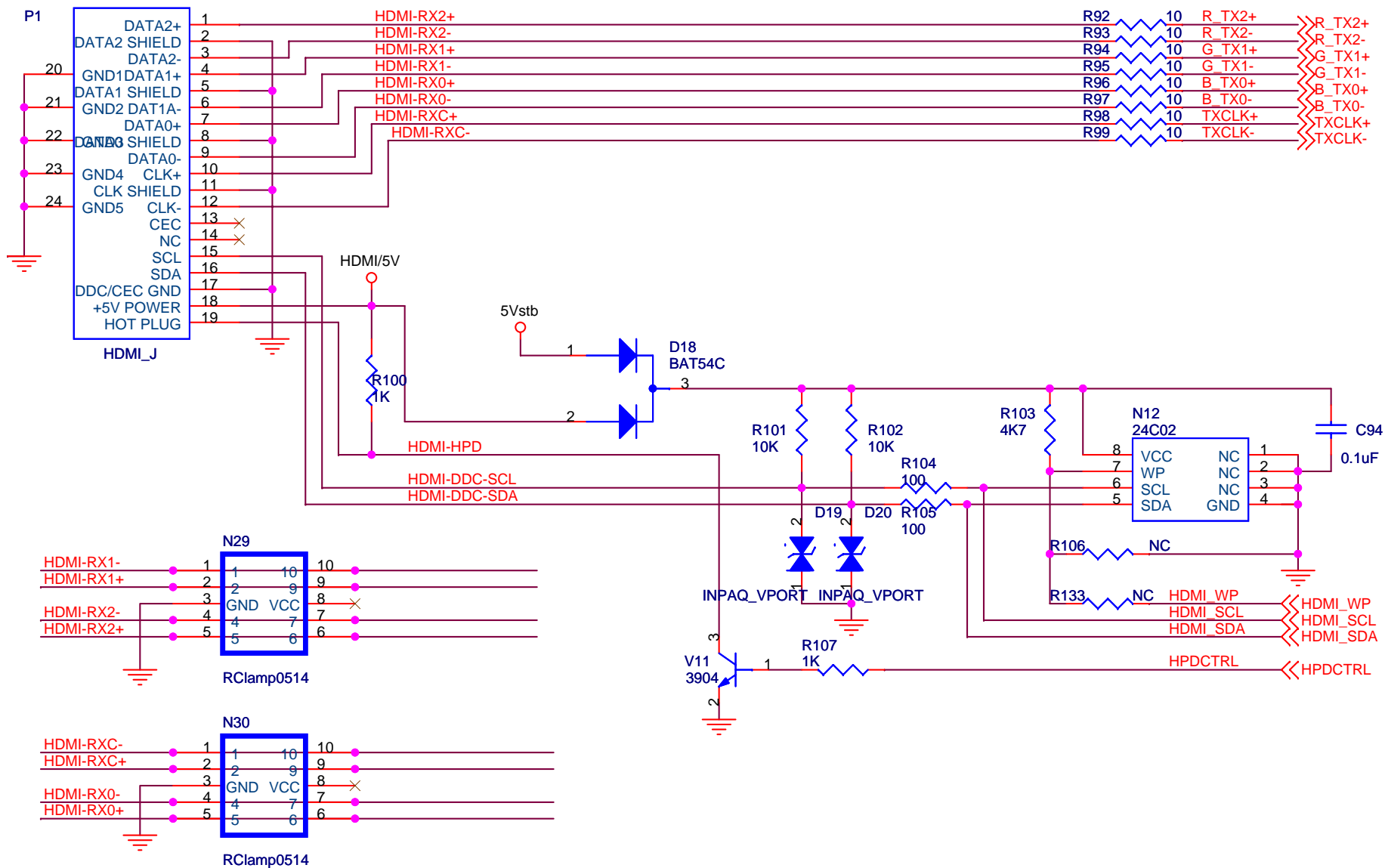
+3.3V for VDD_MPLL

Vcc3.3for MST9E19A Digital

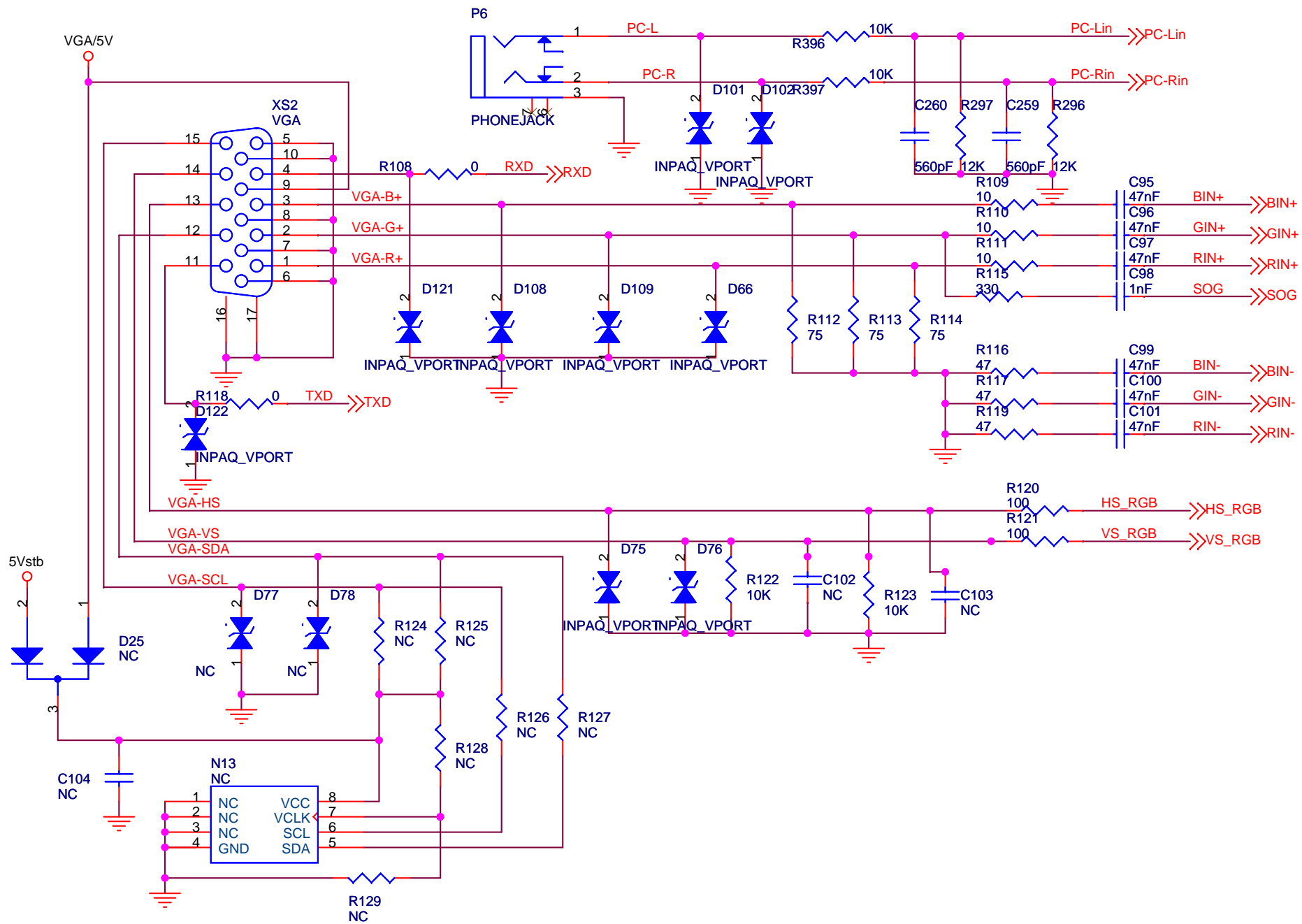
VDDC for MST9E19A Core



2、MST9U19B小信号电源供电部分电路

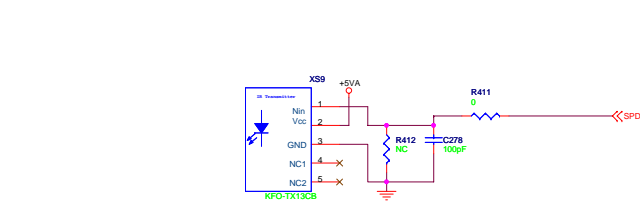
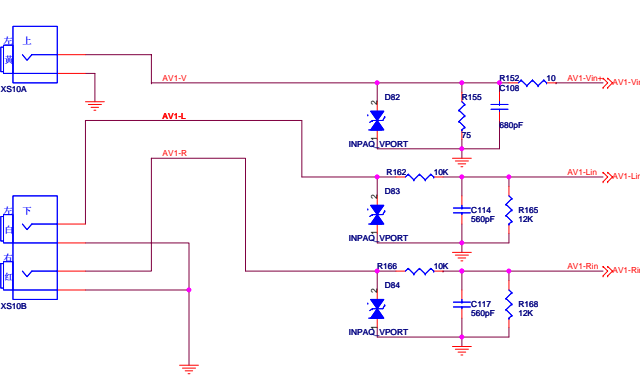
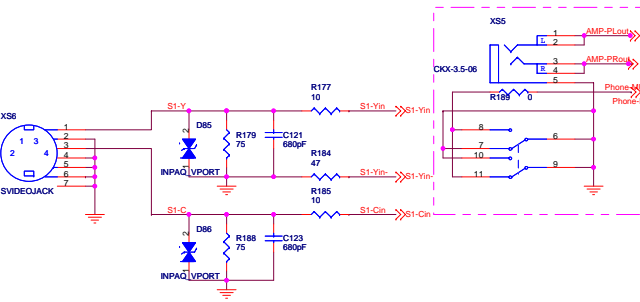
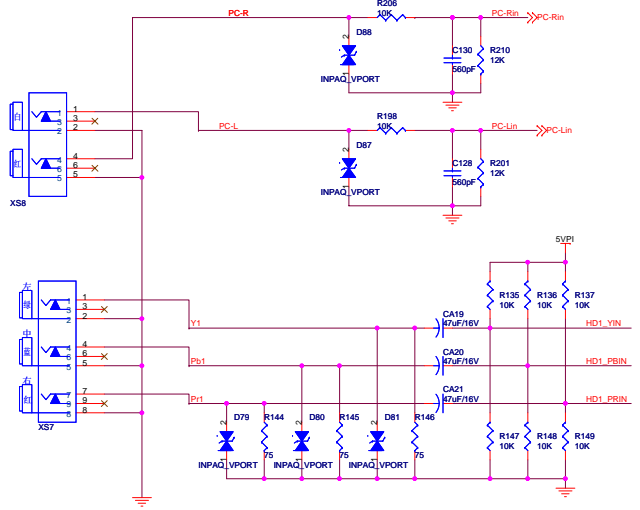


4、HDMI输入及其接口匹配部分电路



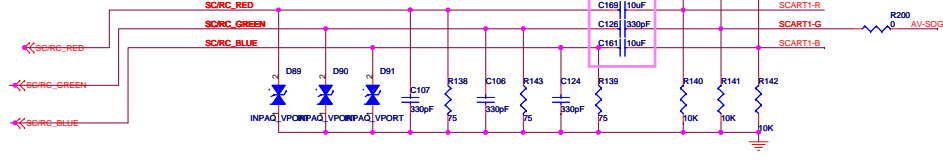
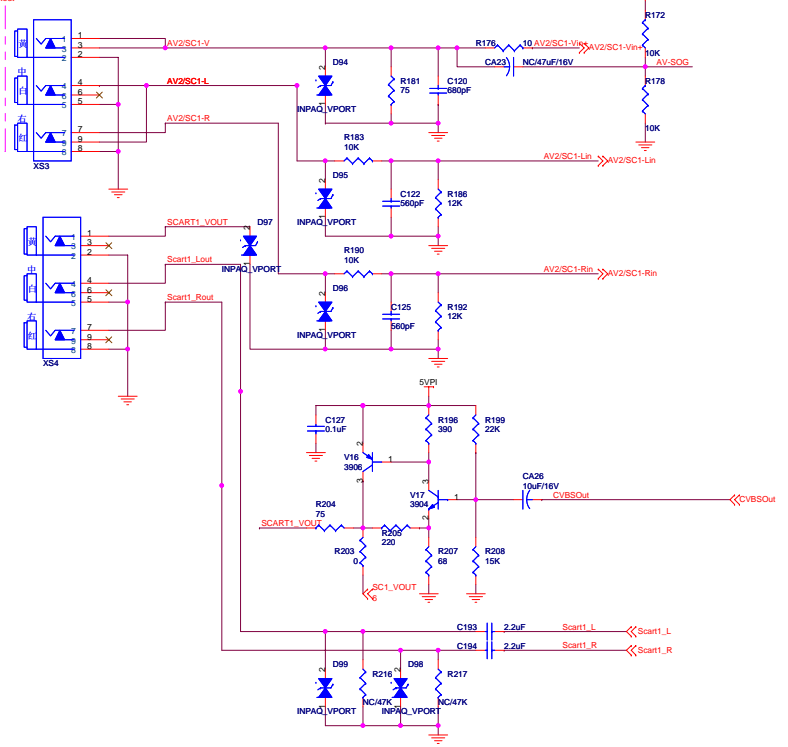
5、VGA输入及其接口匹配部分电路

HDTV Input PC Audio Input

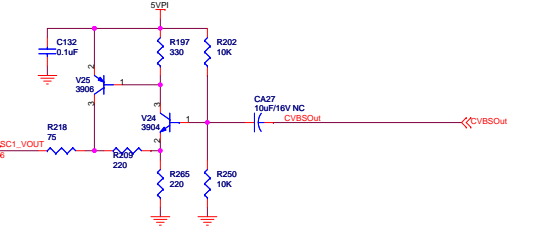
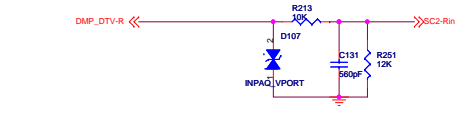
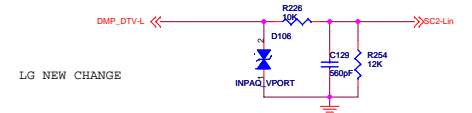
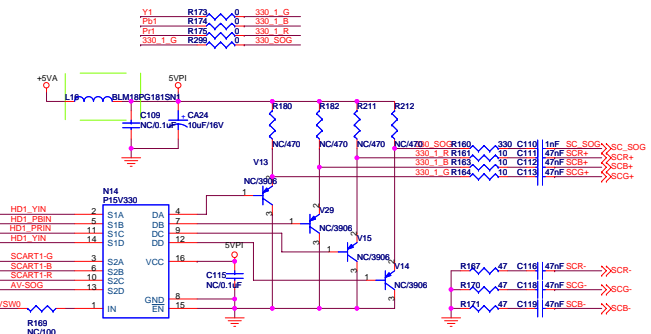


和scab库对应L、k管脚

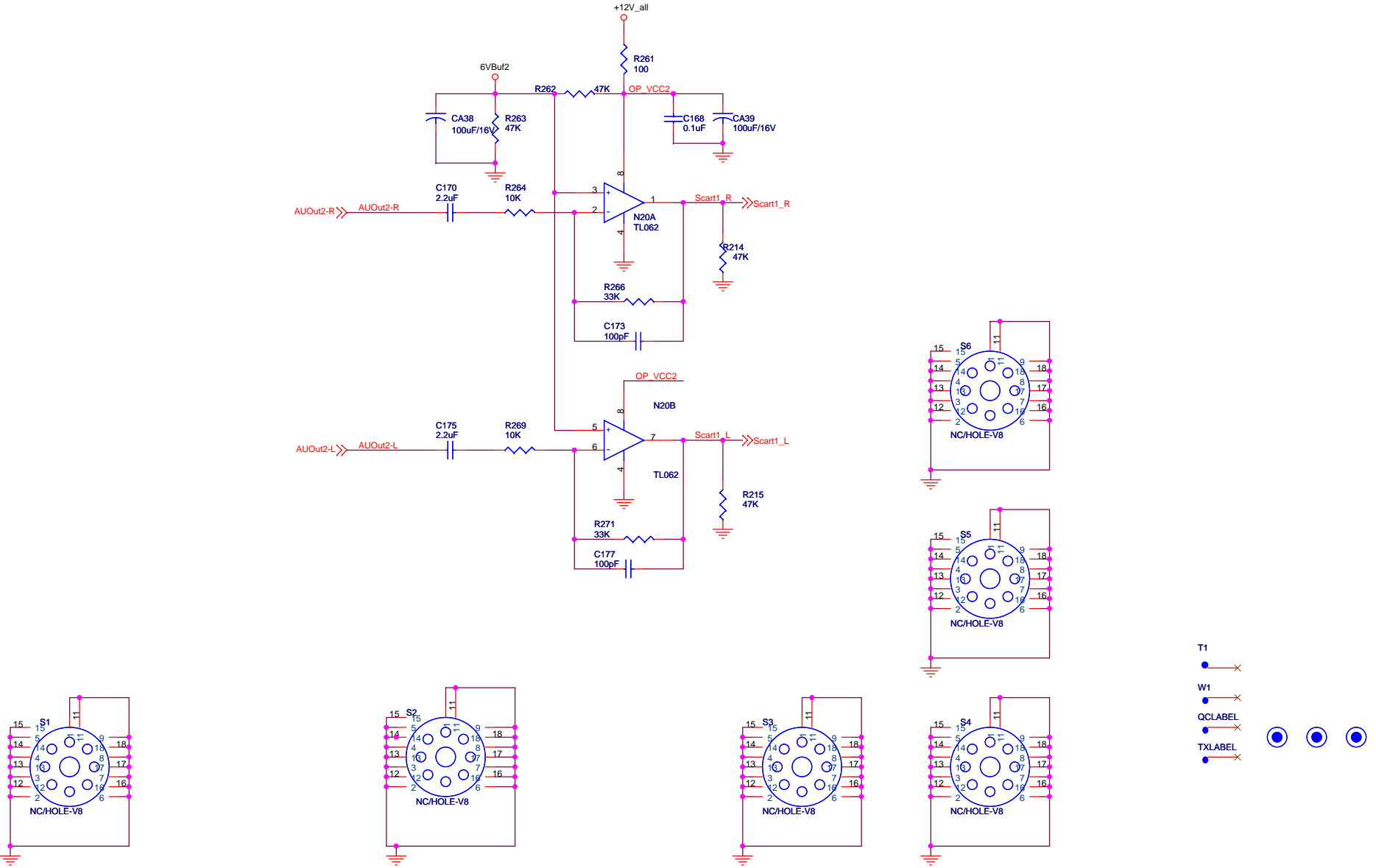
OR AV2&AVOUT



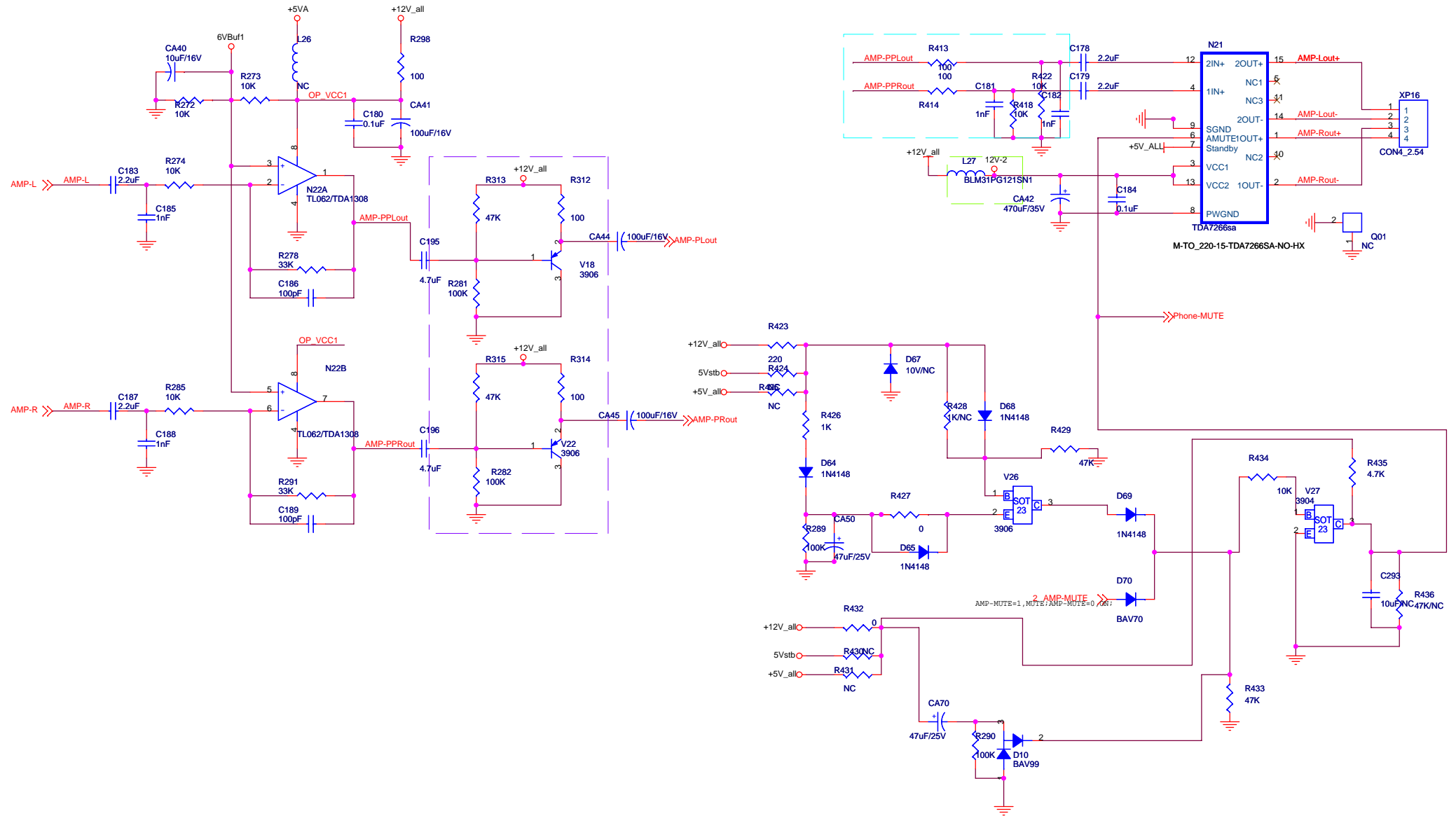
USB读卡器的图像YPbPr格式与SCART1的RGB共用



6、AV1/AV2/S端子/HDTV输入、AV输出、光纤输出、PC音频输入部分电路

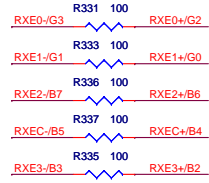


FOR TDA1308/PT2308 L26 FB,R298 NC;
FOR TL062 L26 NC,R298 0;

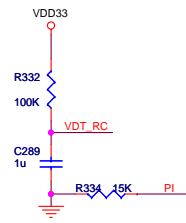


9、音频前置运放、伴音功放及静音控制部分电路

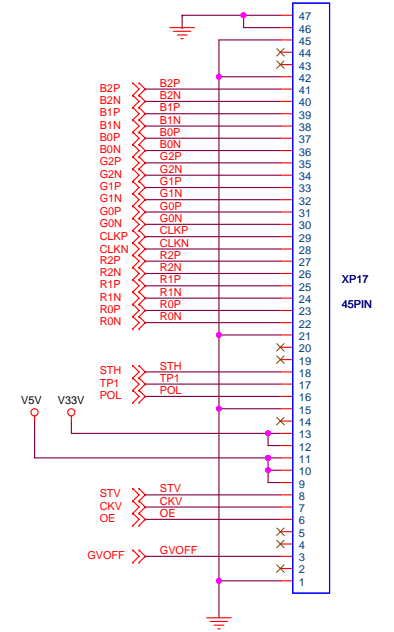
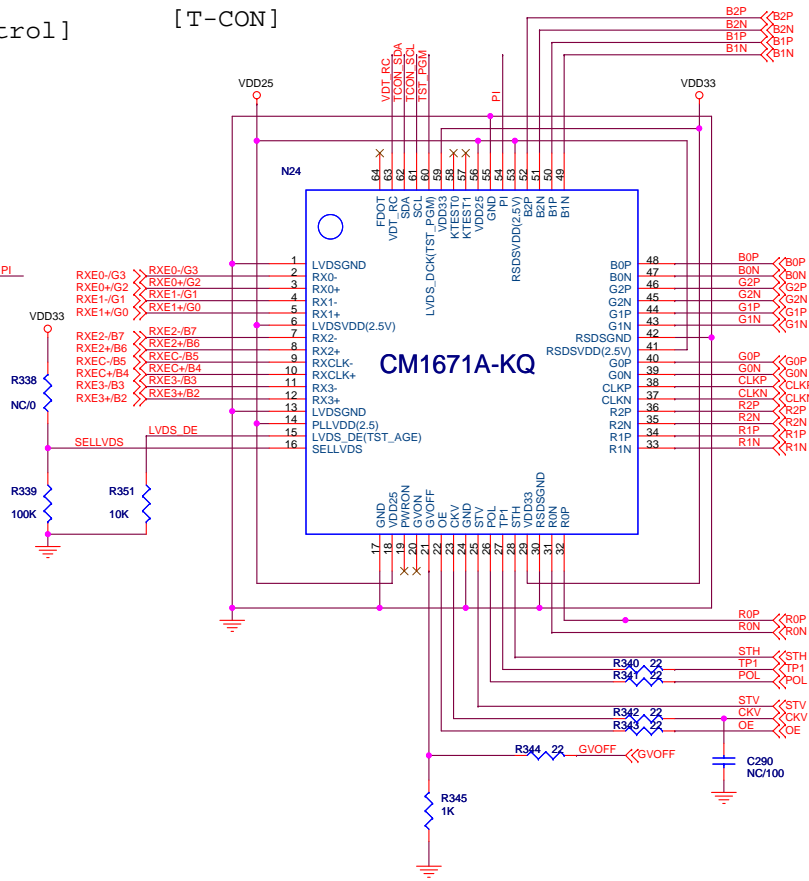
[Terminator near T-CON]



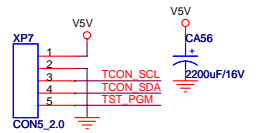
[ASIC Control]



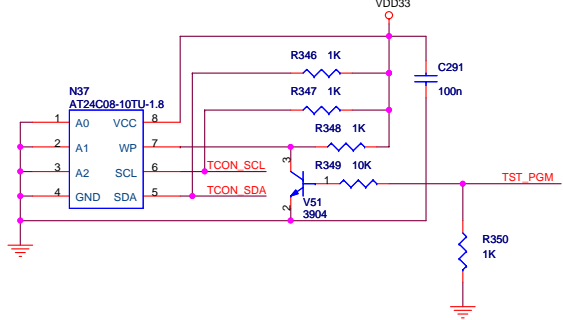
[T-CON]



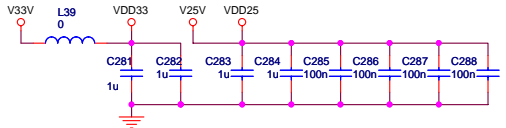
Debug port



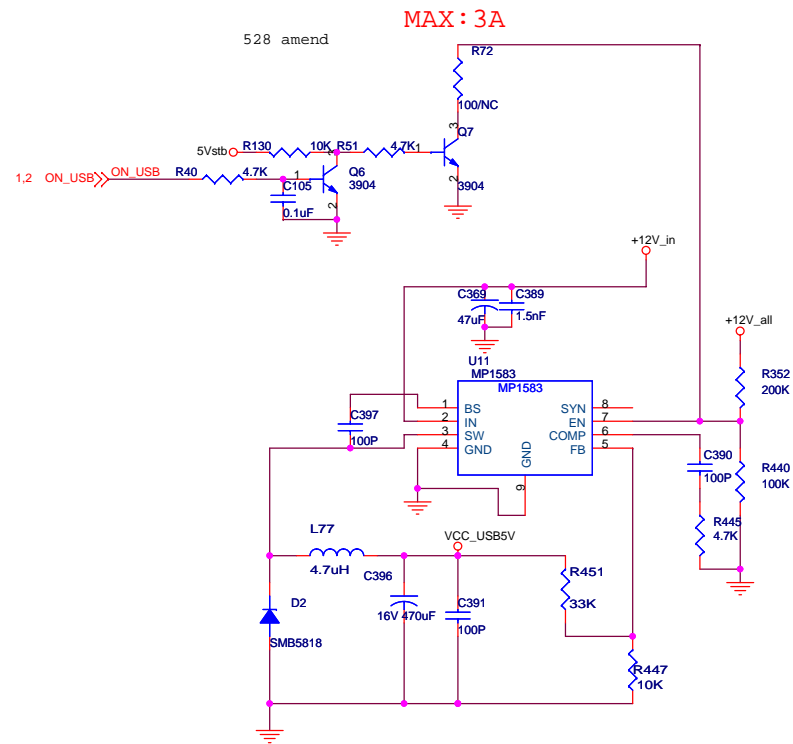
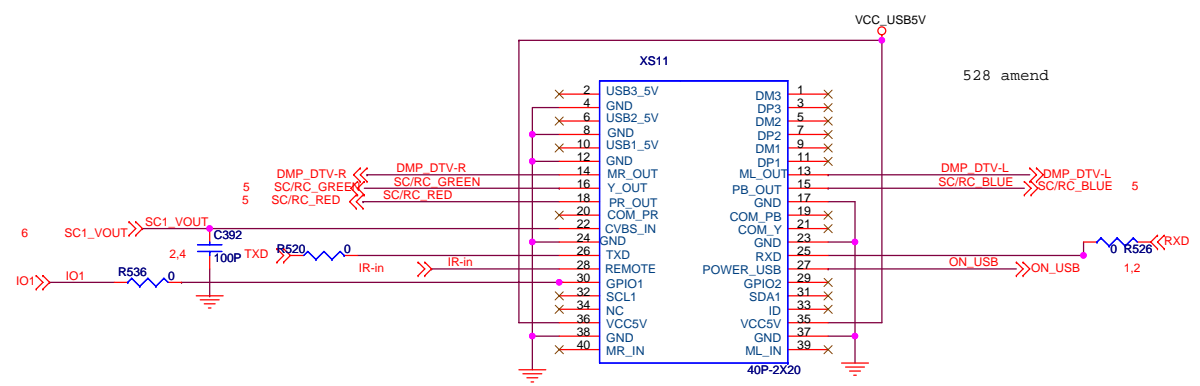
[I2C EEPROM for LUT]



[Filter near T-CON]



10、TCON芯片（CM1671A-KQ）、屏供电及LVDS接口部分电路



11、DMP供电控制及DMP音频输出接口部分电路

海信液晶TLM26E58系列彩色电视接收机电源电路原理图

