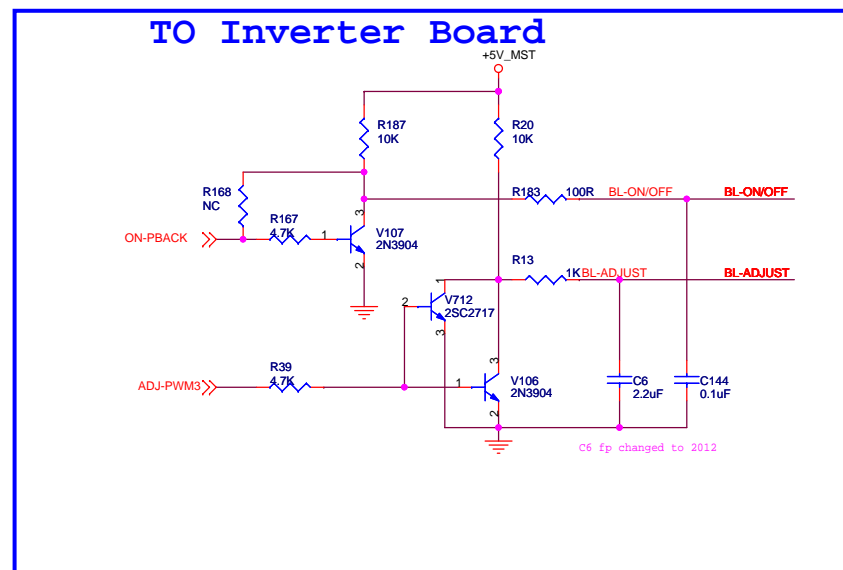
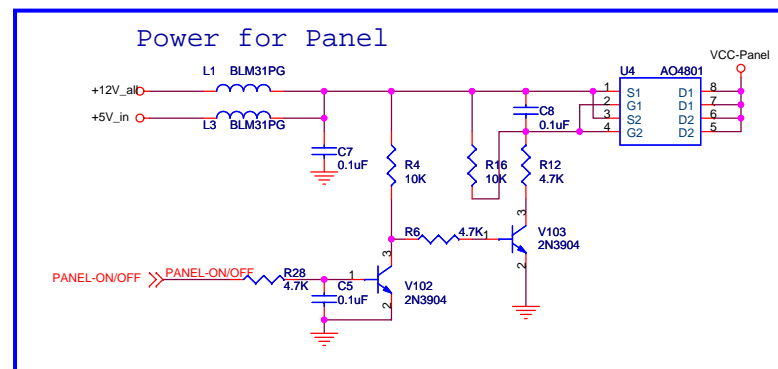
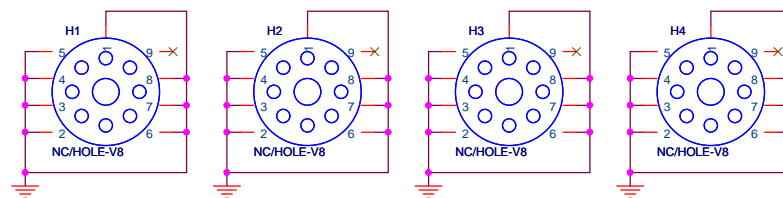


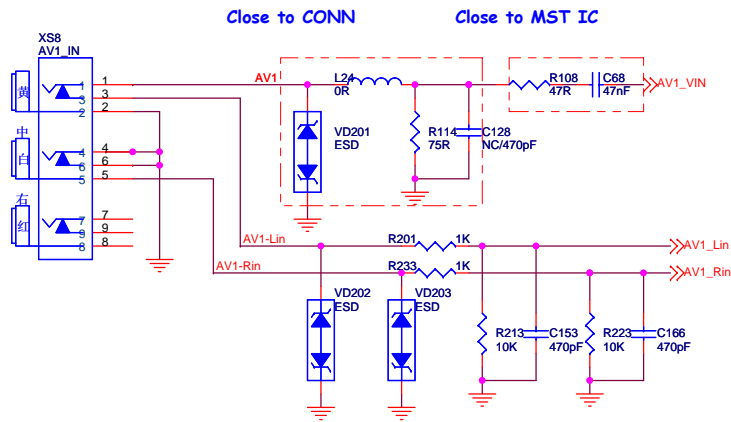
+5V_in	主5V电源
+12V_IN	12V电源
+5V_MST	待机5V
BL-ON/OFF	背光开关
BL-ADJUST	背光亮度
STANDBY	待机



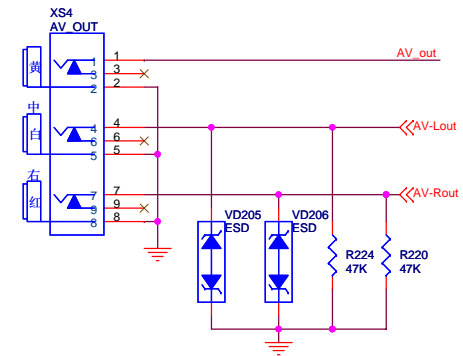
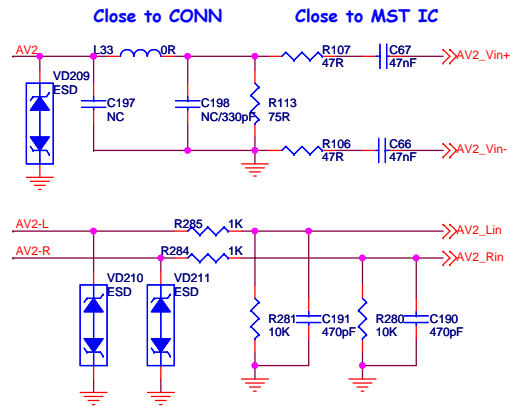
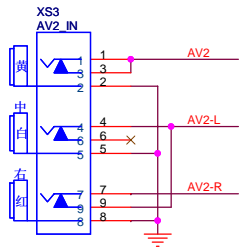
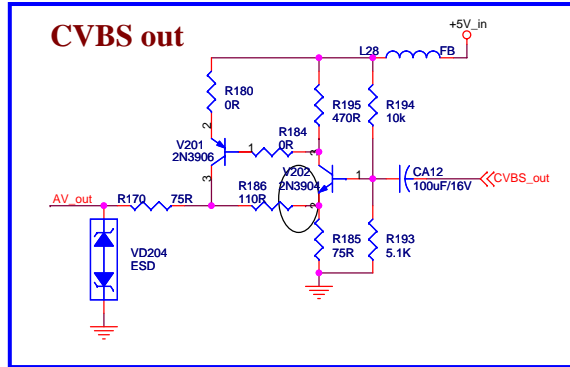
1、系统供电、控制信号部分电路

VIDEO

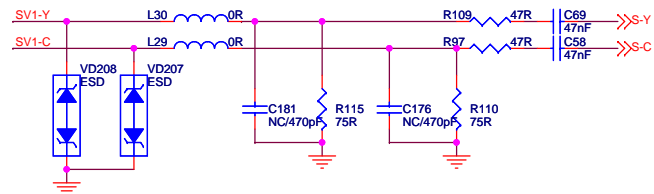
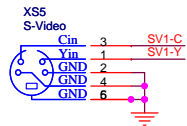
AV In



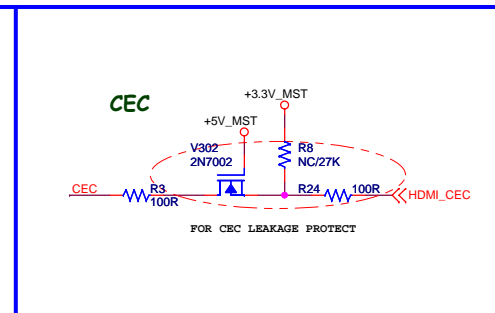
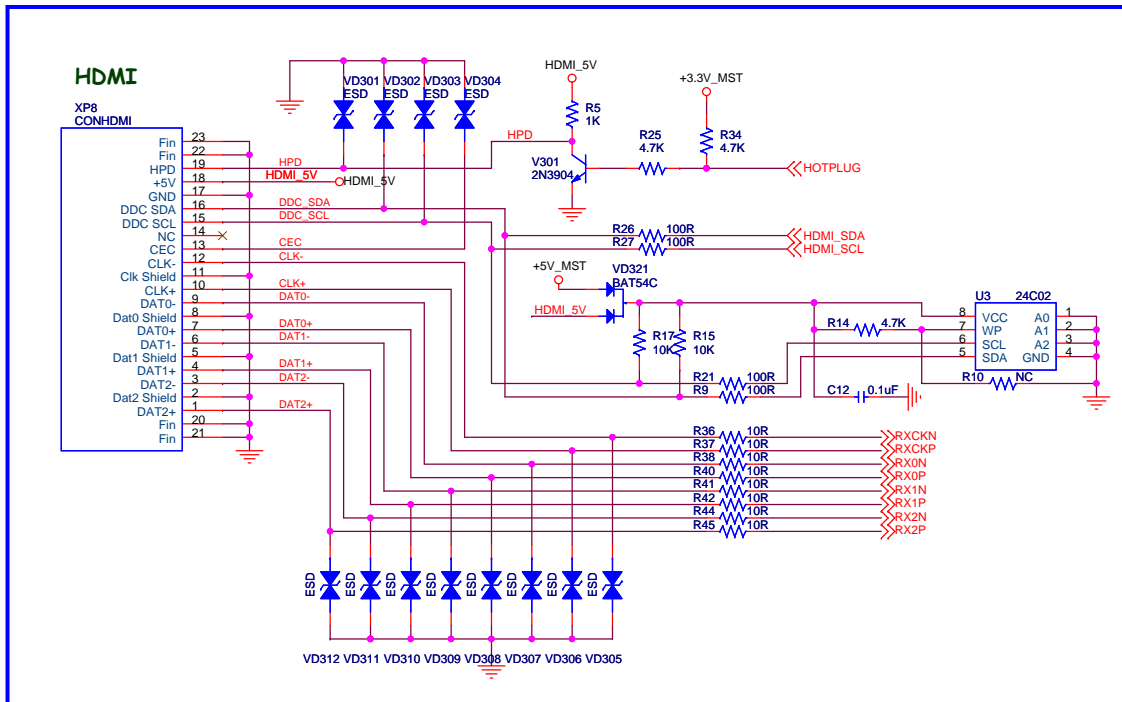
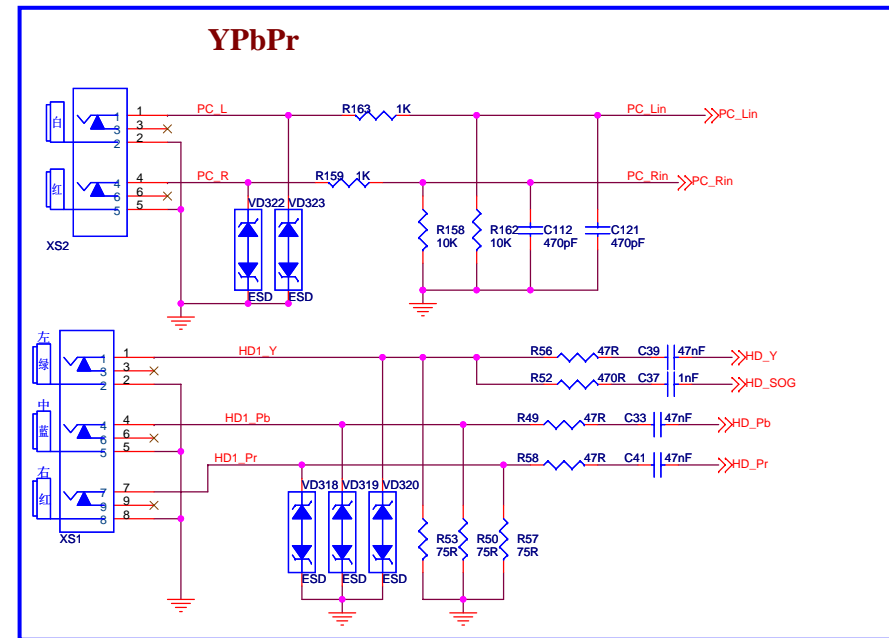
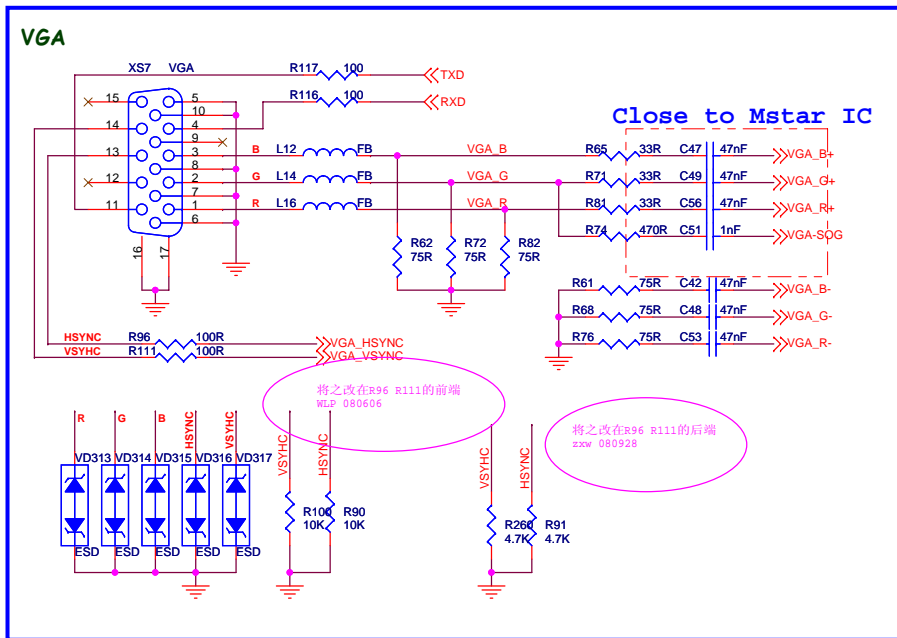
AV out



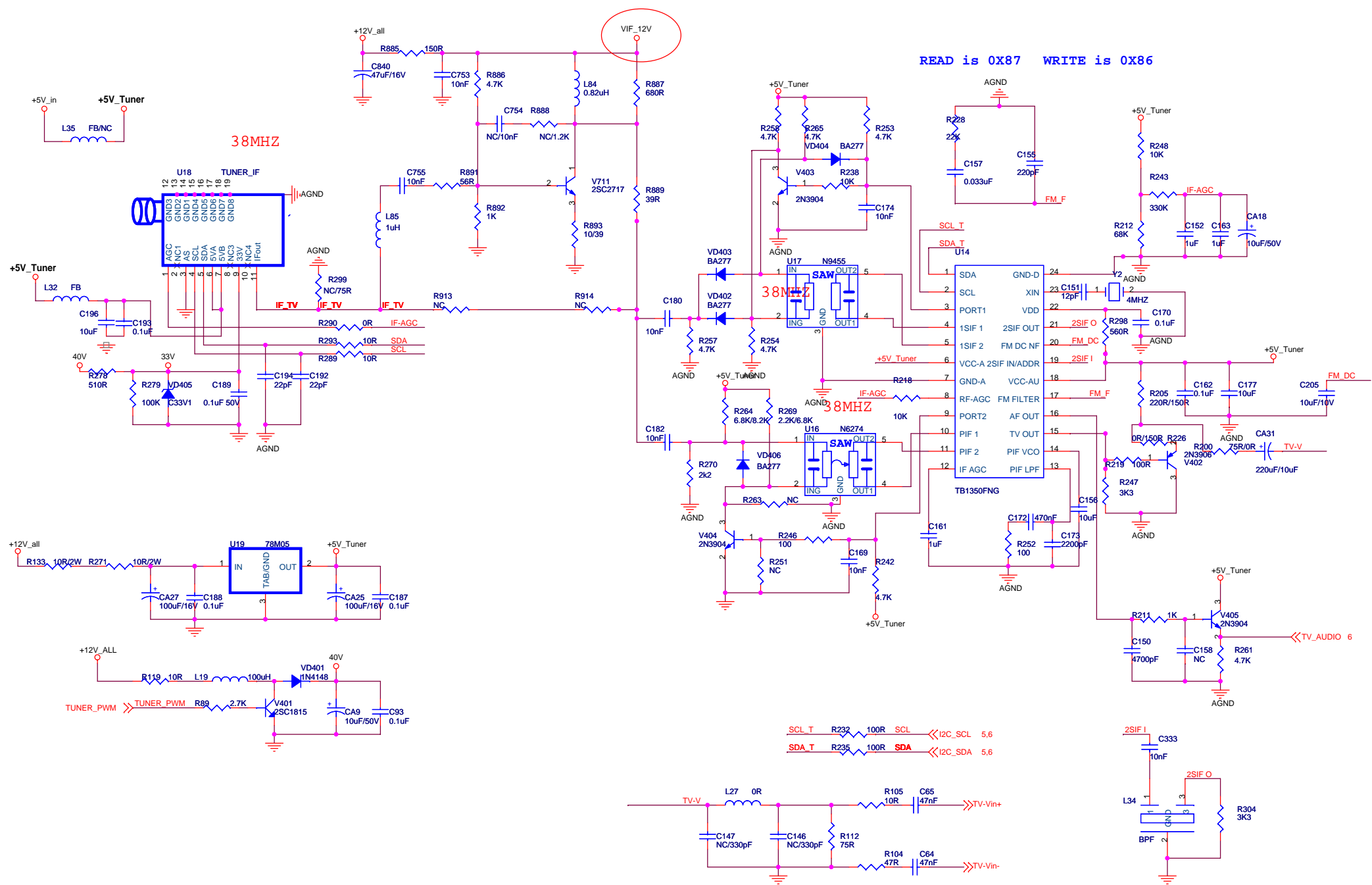
S-Video



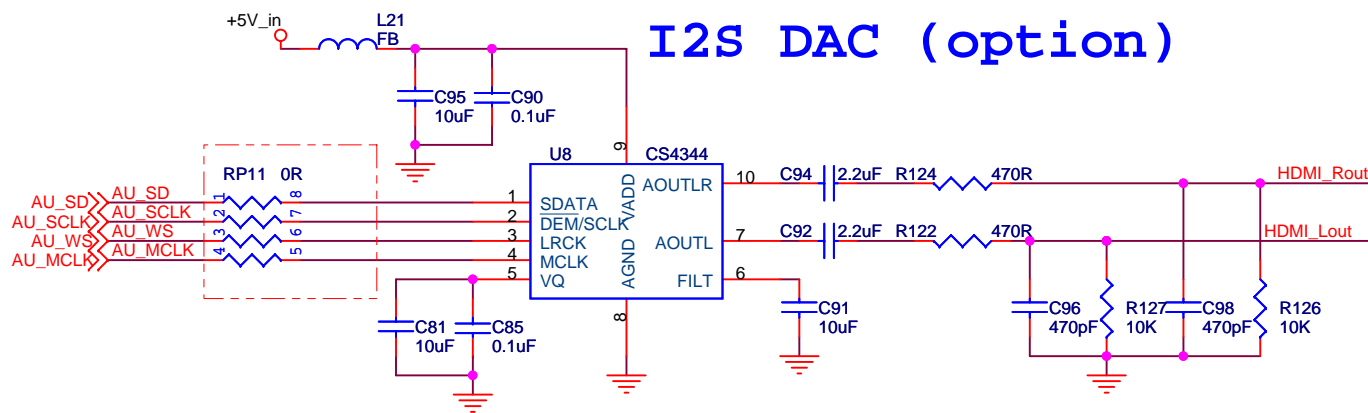
2、AV1、AV2、S端子、AV输出及匹配网络部分电路



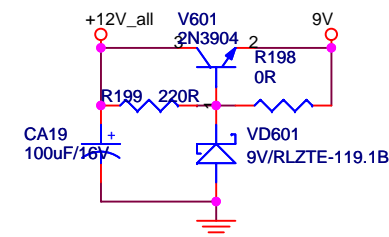
3、VGA/HDTV/HDMI输入/PC音频输入/CEC控制及匹配网络部分电路



4、TV接收、中频放大、图像解调部分电路

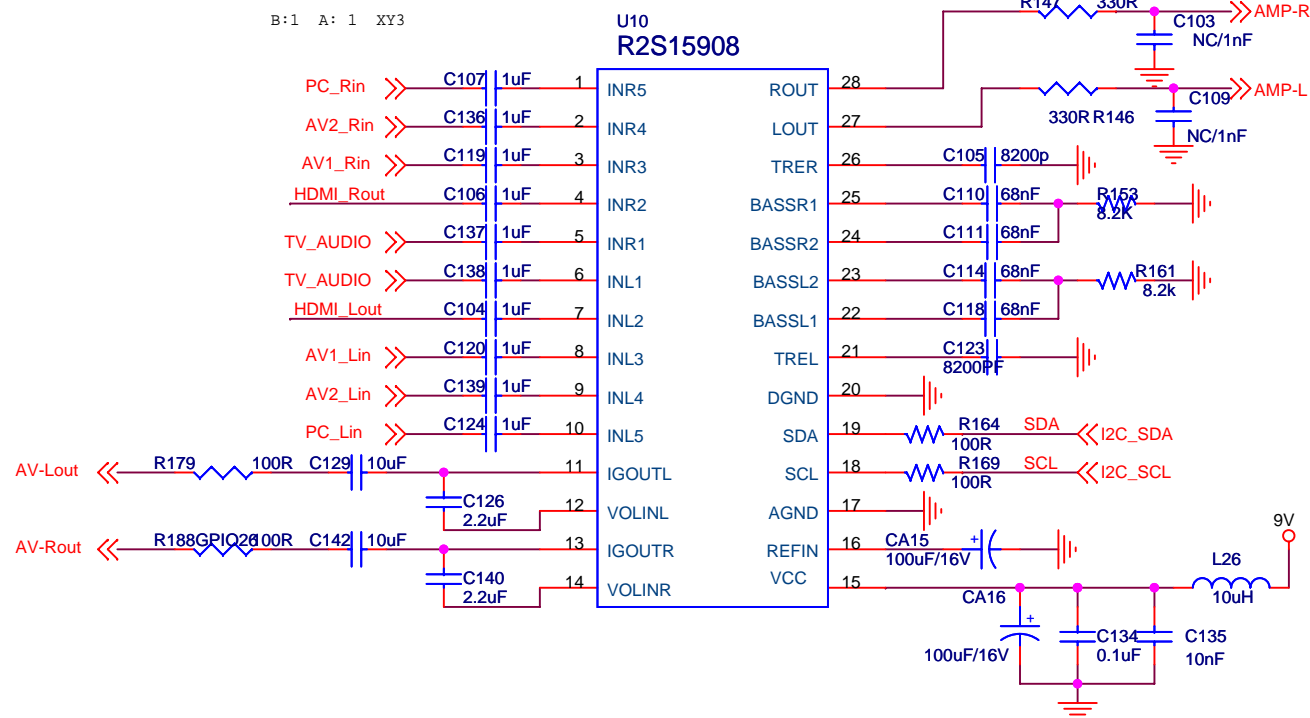


9V for Audio



Address: 0x82

B:1 A: 1 XY3



6、HDMI数字伴音D/A变换、伴音切换部分电路

