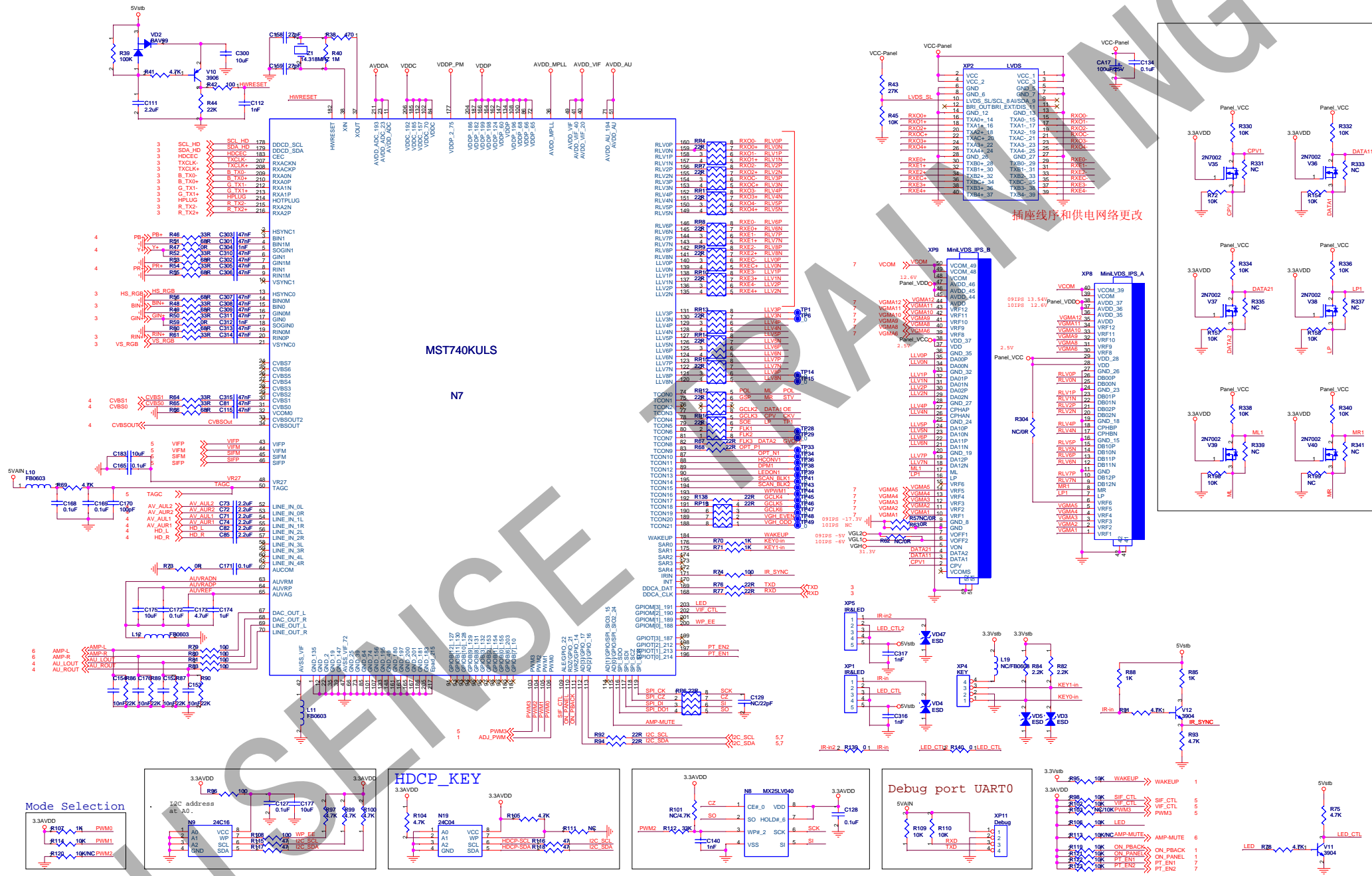
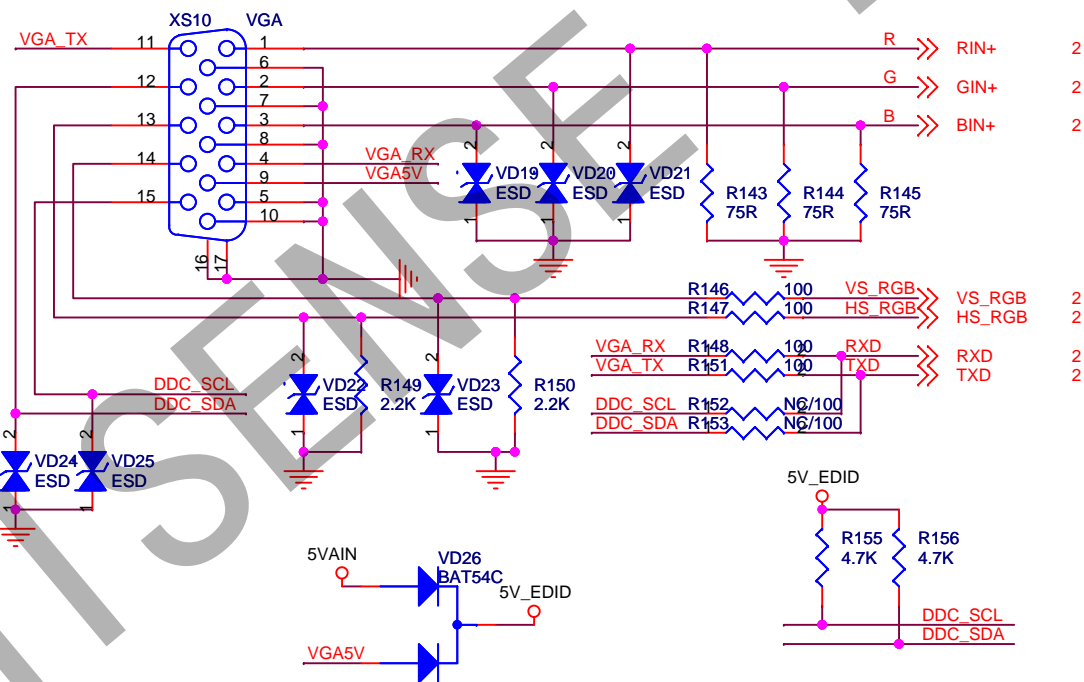
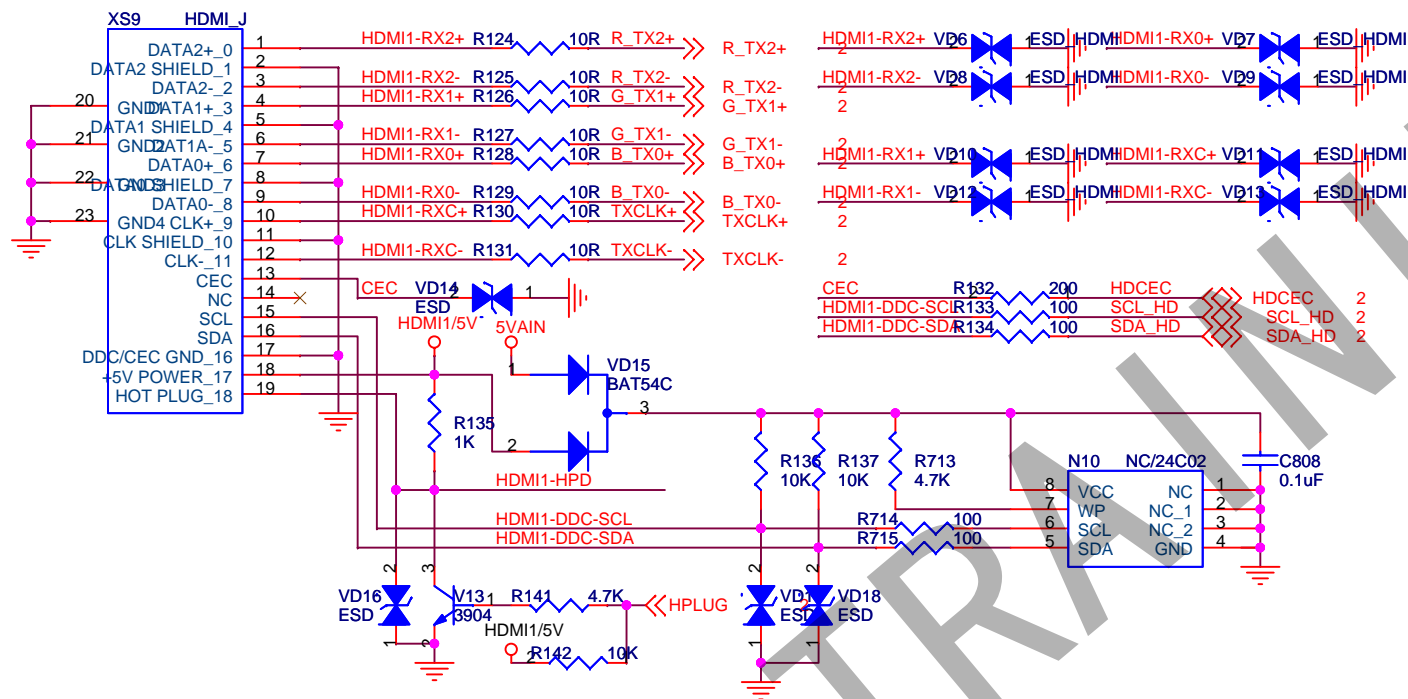


Title		
MST739DU		
Size	Document Number	Rev
A3	Power	B
Date:	Friday, July 16, 2010	Sheet 1 of 7



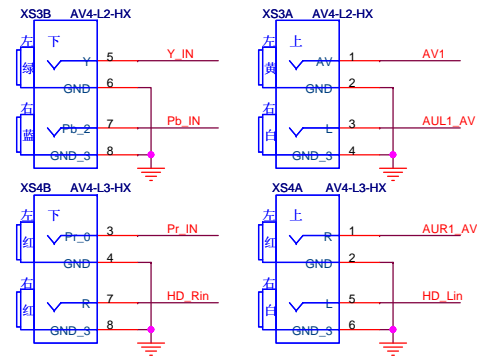
插座线序和供电网络更改

Title			MST739DU
Size	Document Number	MST739DU	
Date:	Friday, July 18, 2010	Sheet	2 of 7

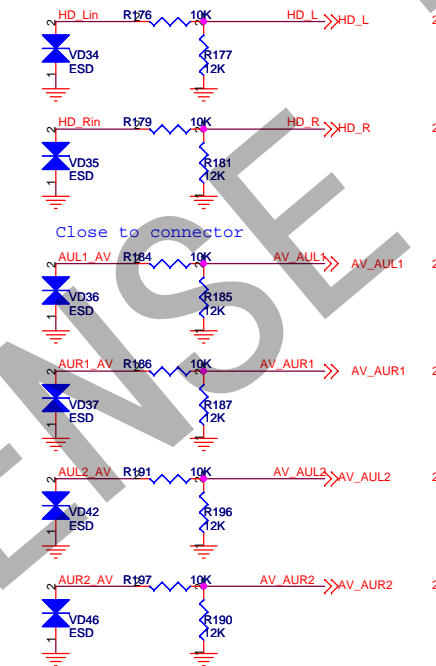
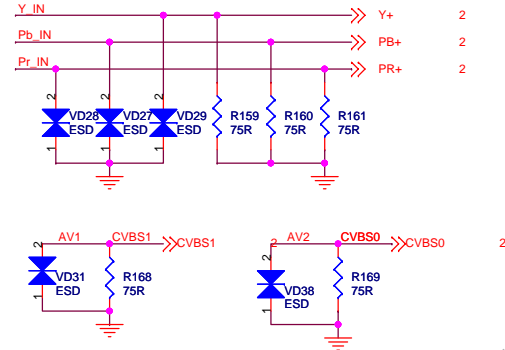
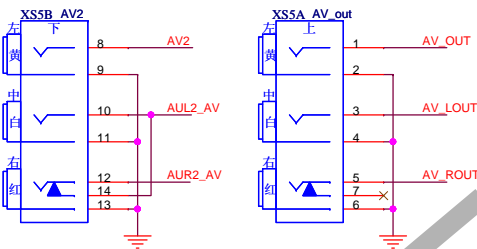


Title		
MST739DU		
Size	Document Number	Rev
A4	HDMI & VGA interface	B
Date:	Friday, July 16, 2010	Sheet 3 of 7

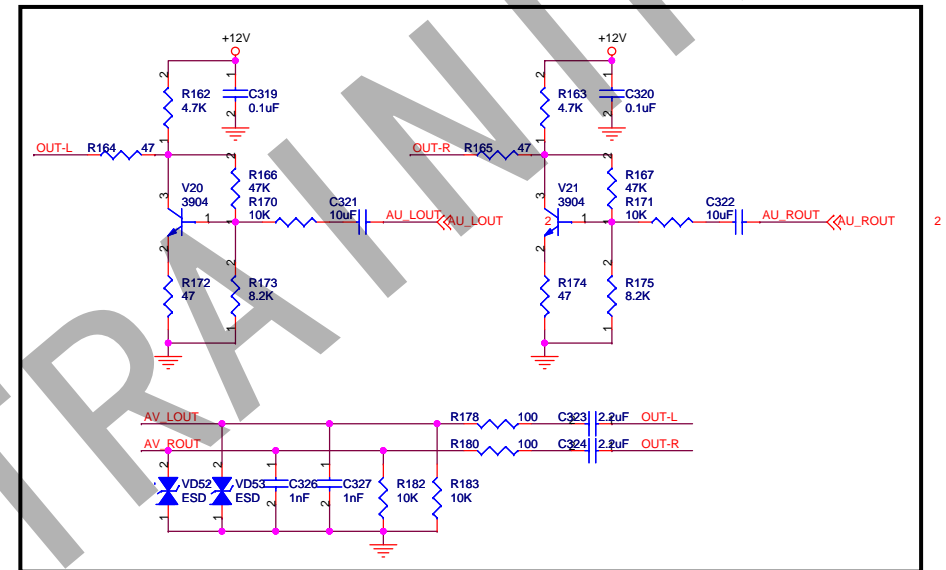
HDTV&AV1_input



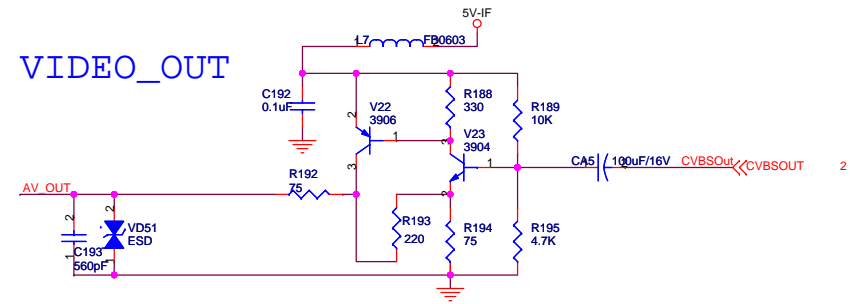
AV2_input&AV_out



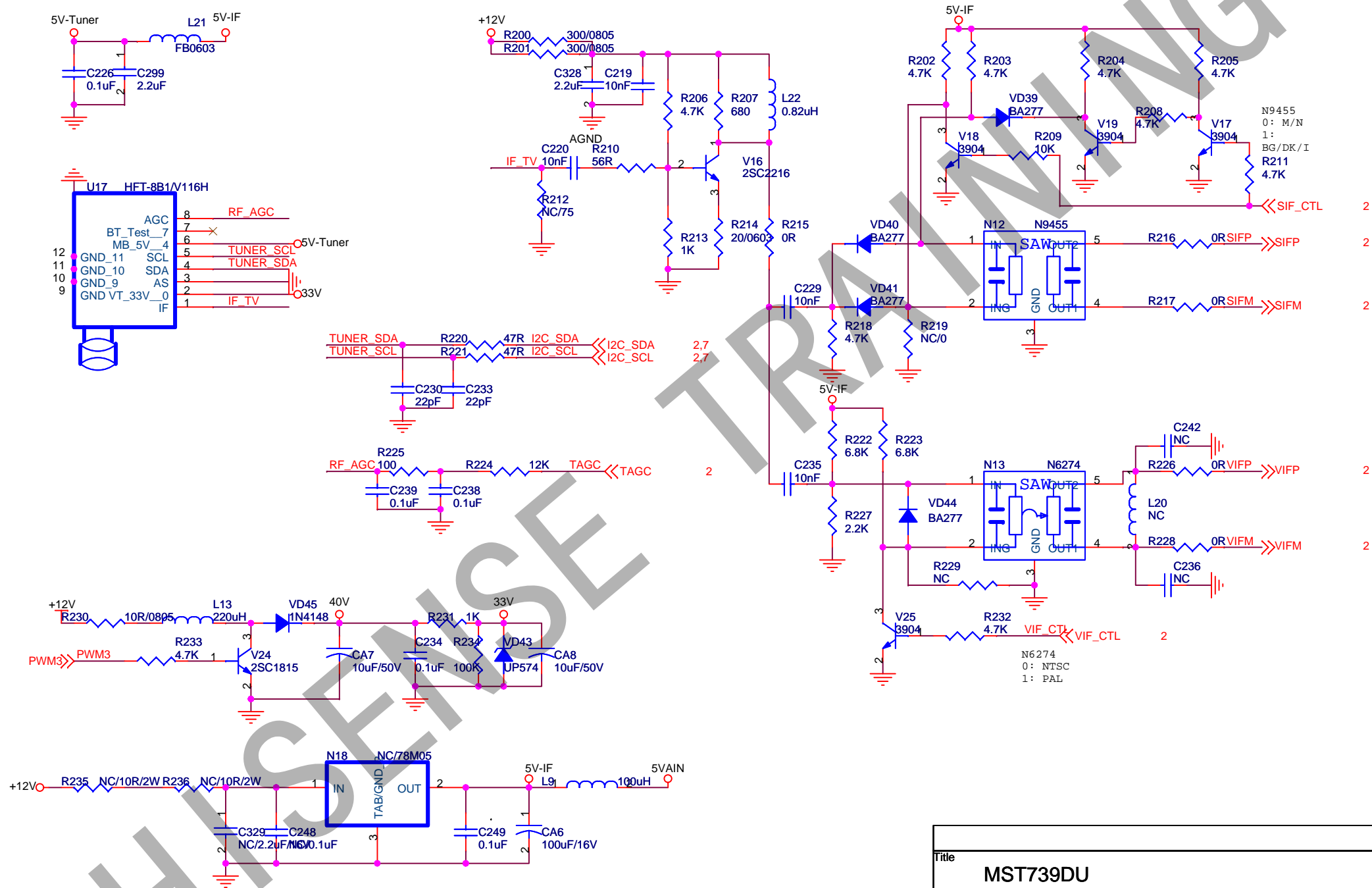
Audio Line out



VIDEO_OUT

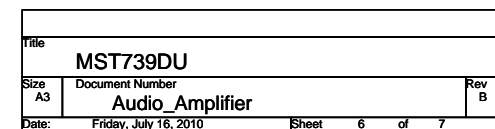
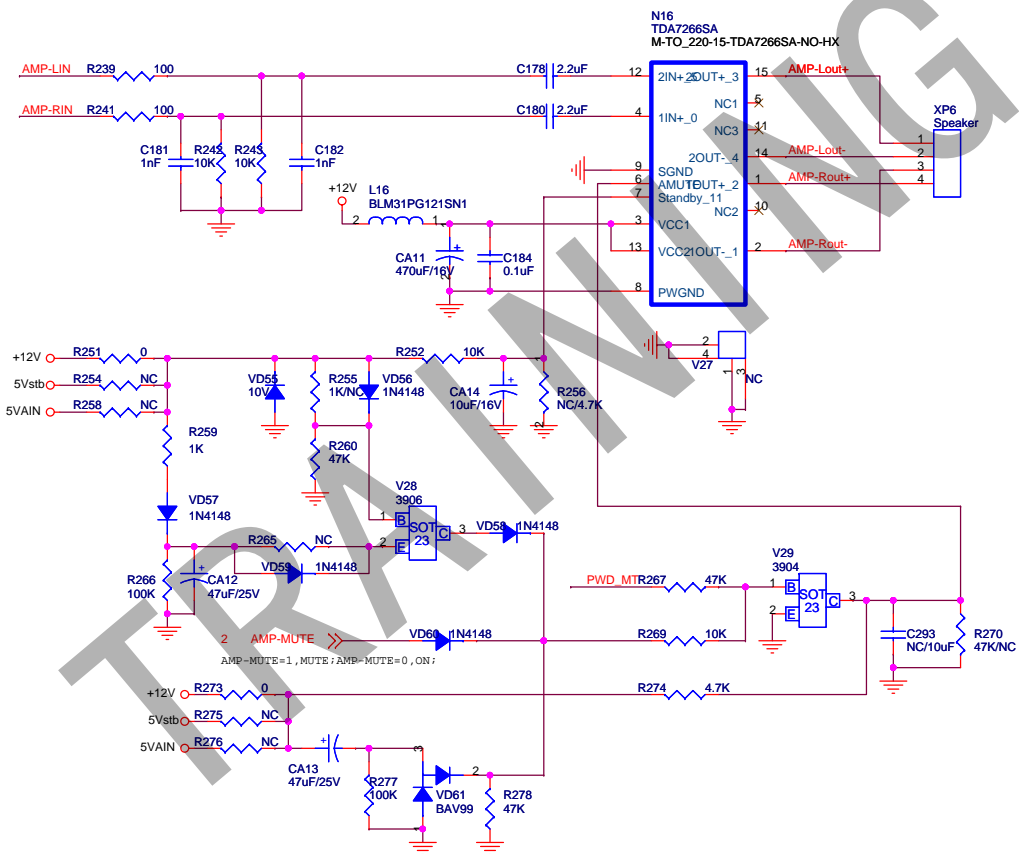


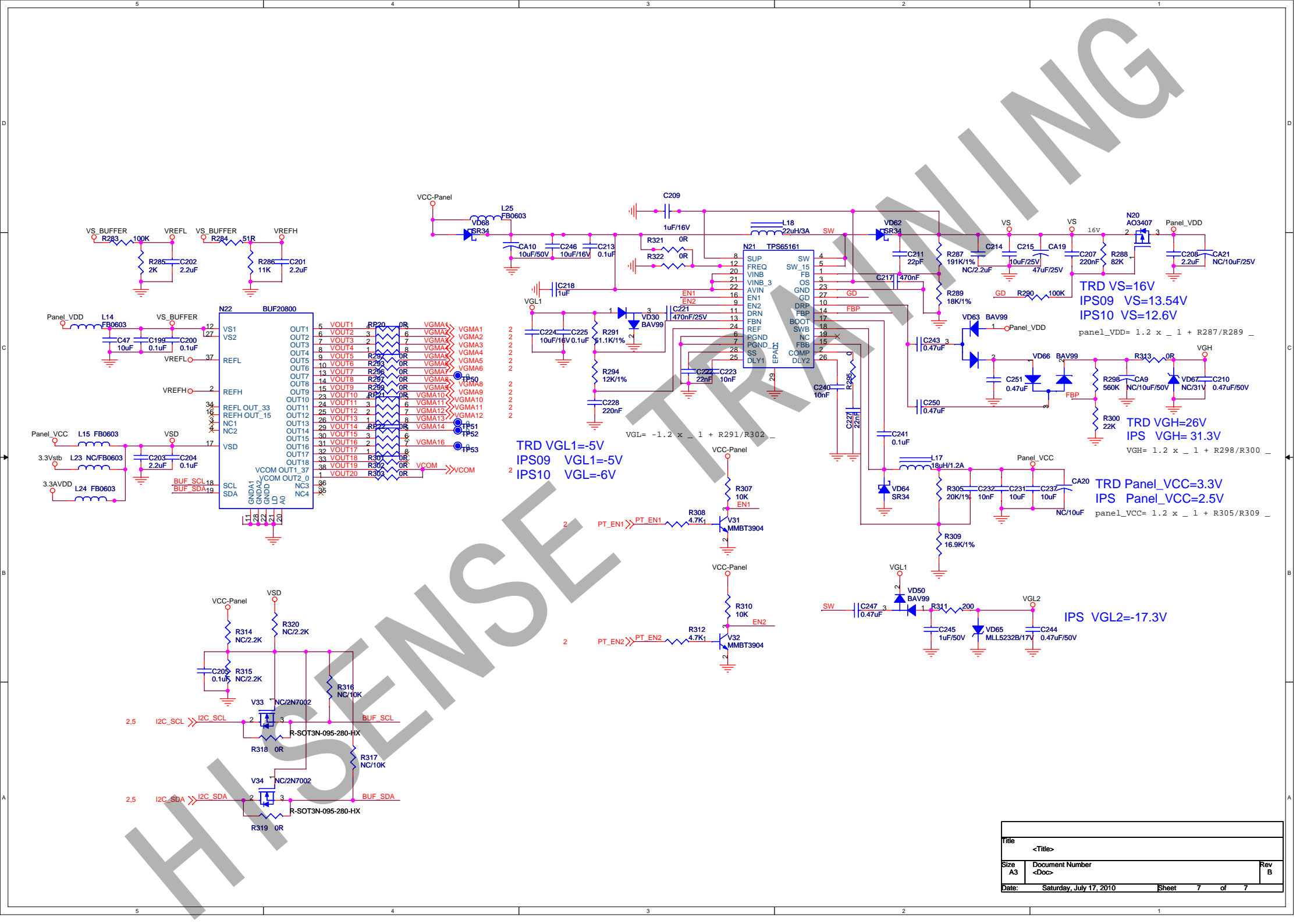
Title			MST739DU
Size	Document Number	Rev	
A3	Video & Audio Interface	B	
Date:	Friday, July 16, 2010	Sheet	4 of 7



HY Add For 14pin Power 090811

Title		
MST739DU		
Size	Document Number	Rev
A4	IF_Interface	B
Date:	Friday, July 16, 2010	Sheet 5 of 7





TRD VGL1=-5V
IPS09 VGL1=-5V
IPS10 VGL=-6V

TRD VS=16V
IPS09 VS=13.54V
IPS10 VS=12.6V

TRD VGH=26V
IPS VGH= 31.3V

TRD Panel_VCC=3.3V
IPS Panel_VCC=2.5V

IPS VGL2=-17.3V

Title			<Title>
Size	Document Number	Rev	
A3	<Doc>	B	
Date:	Saturday, July 17, 2010	Sheet	7 of 7