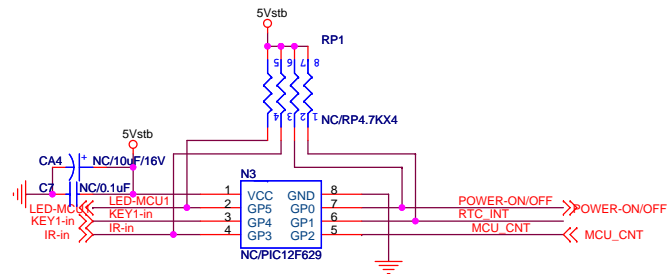
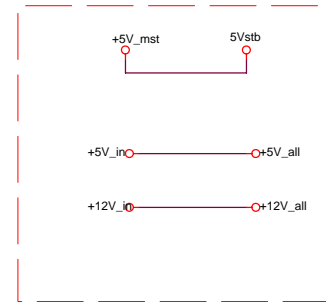
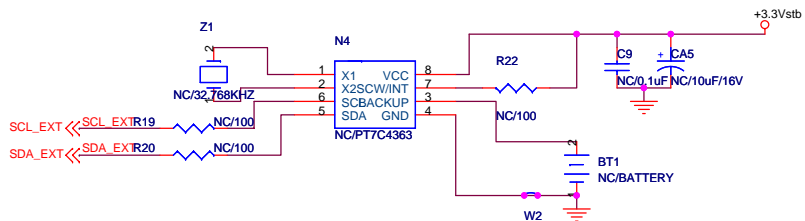
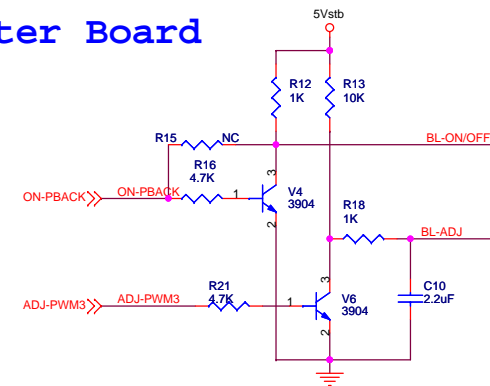


更改部分

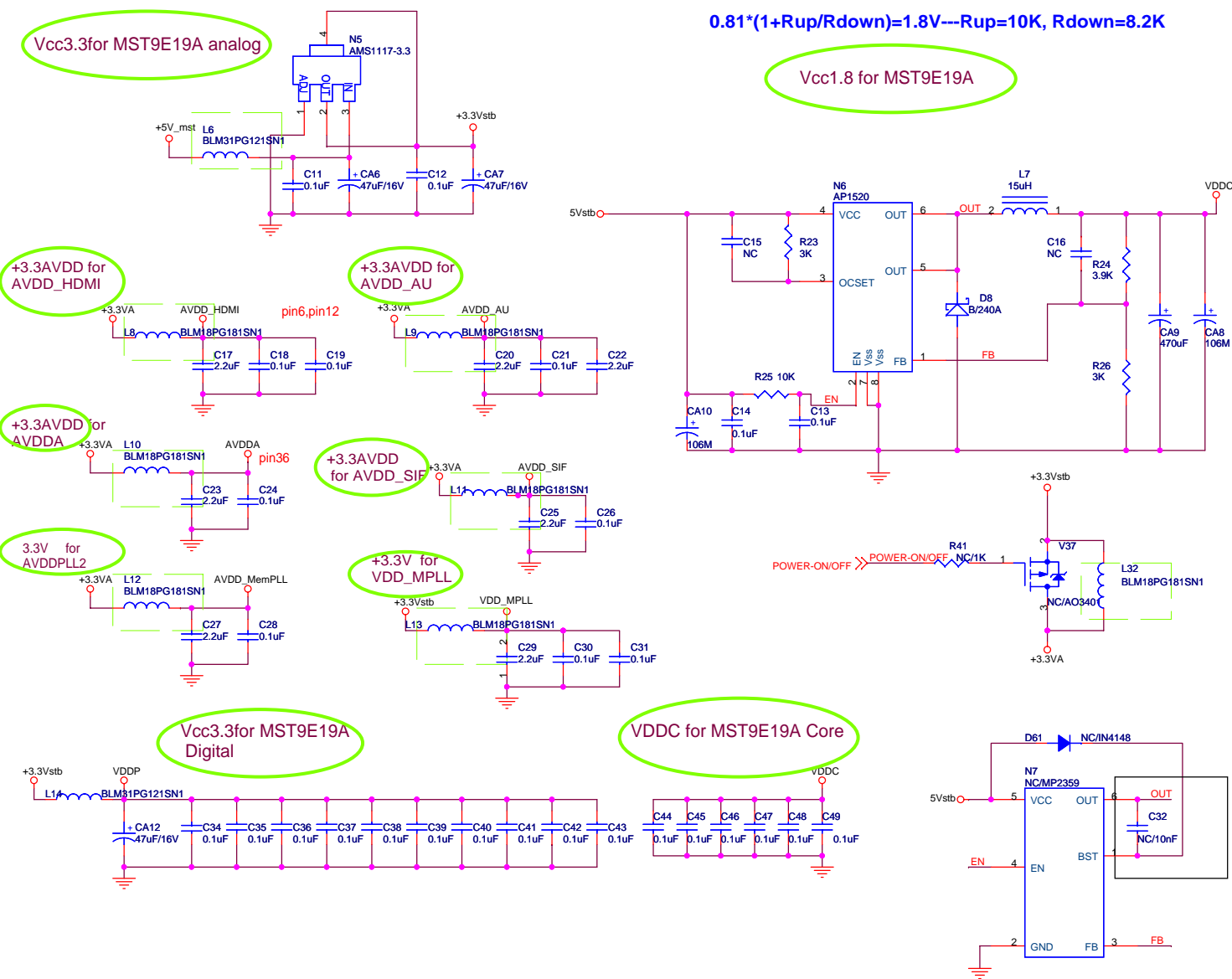


TO Inverter Board

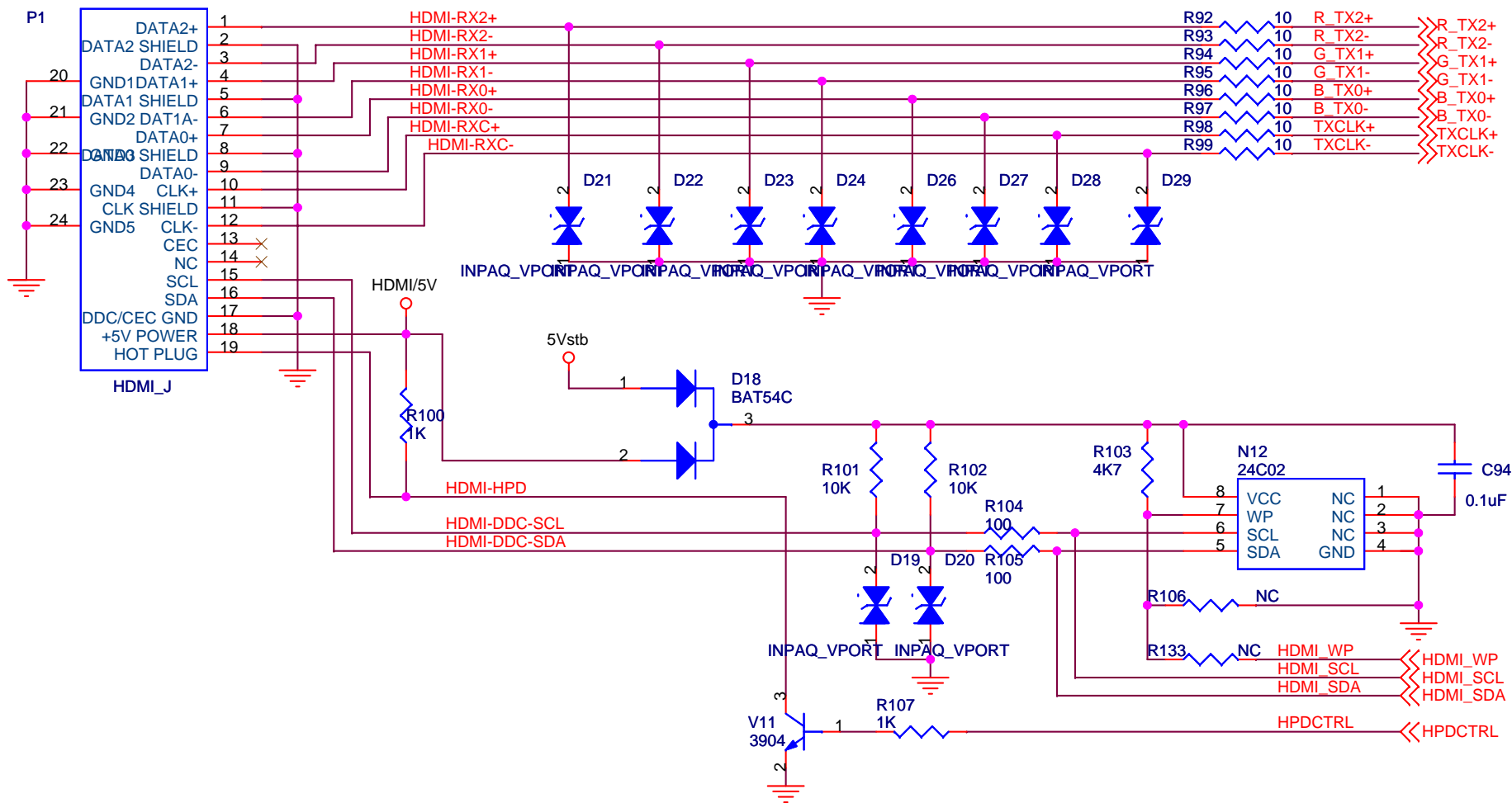


1、系统供电、控制信号部分电路

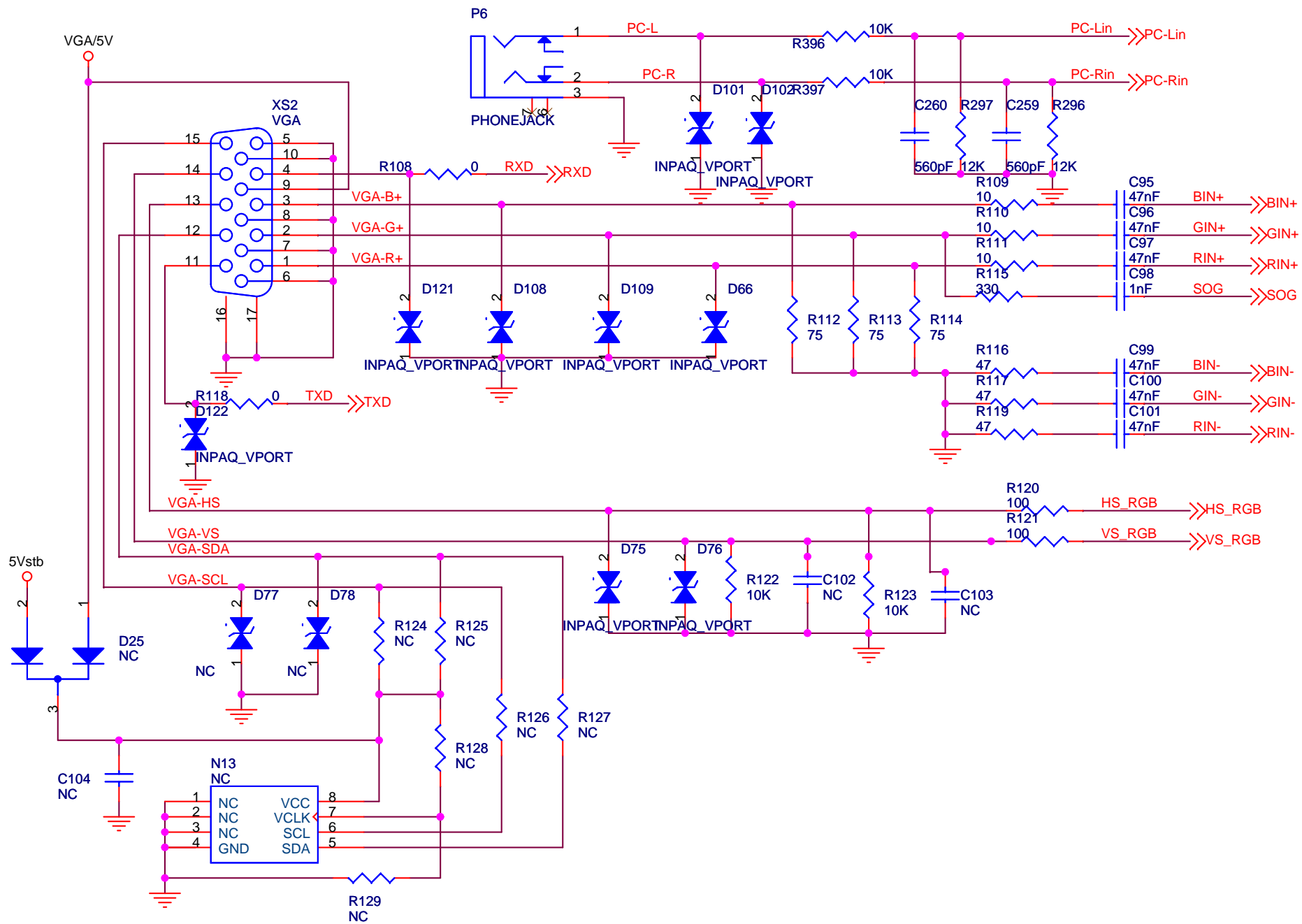
$$0.81 \times (1 + R_{up}/R_{down}) = 1.8V \text{---} R_{up} = 10K, R_{down} = 8.2K$$



2、MST9U19B小信号电源供电部分电路



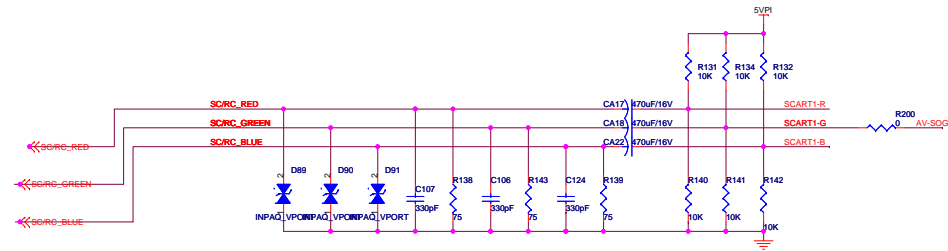
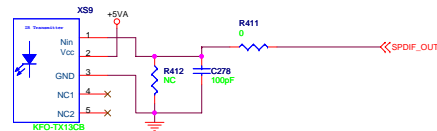
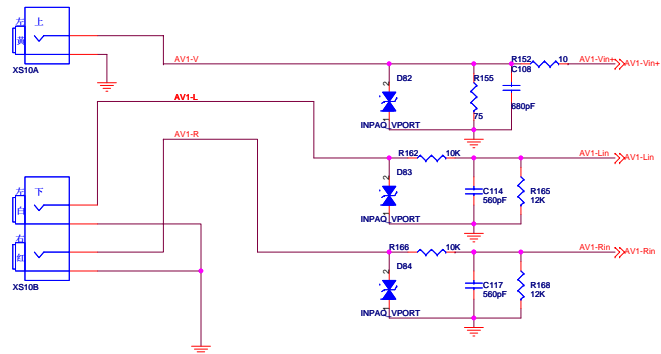
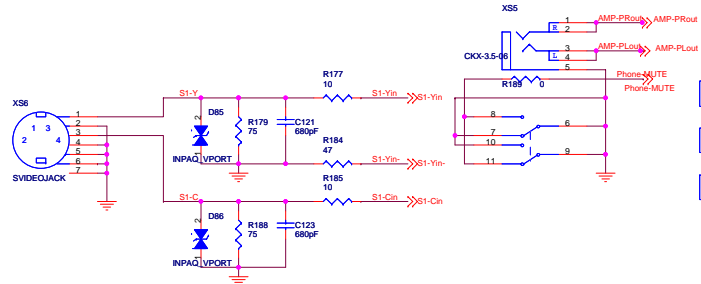
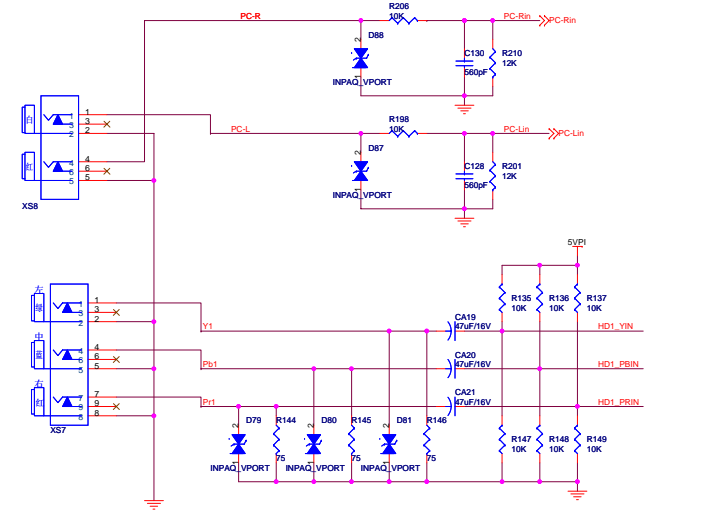
4、HDMI输入及其接口匹配部分电路



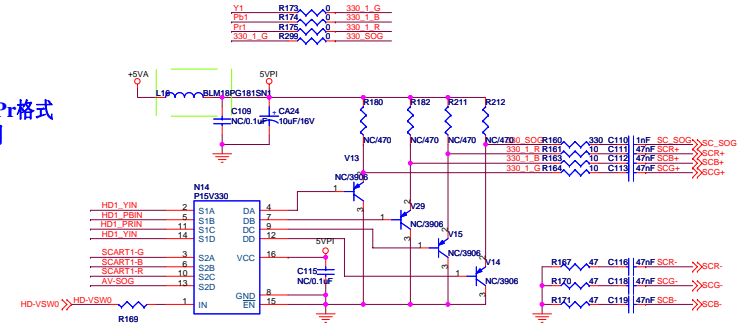
5、VGA输入及其接口匹配部分电路

HDTV Input

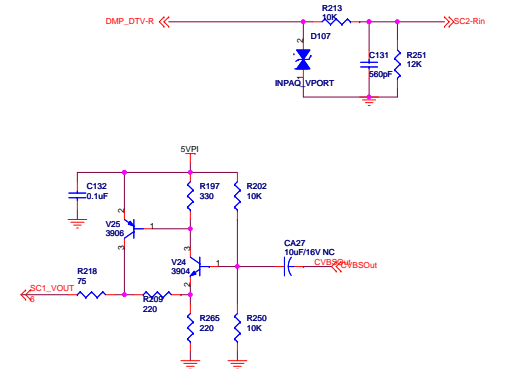
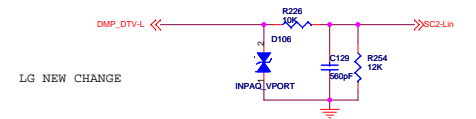
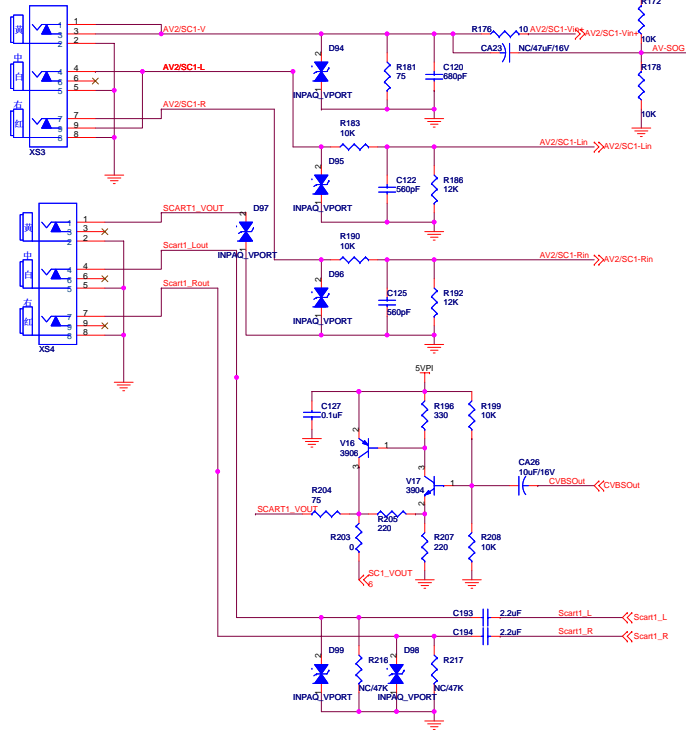
PC Audio Input



USB读卡器的图像YPbPr格式与SCART1的RGB共用

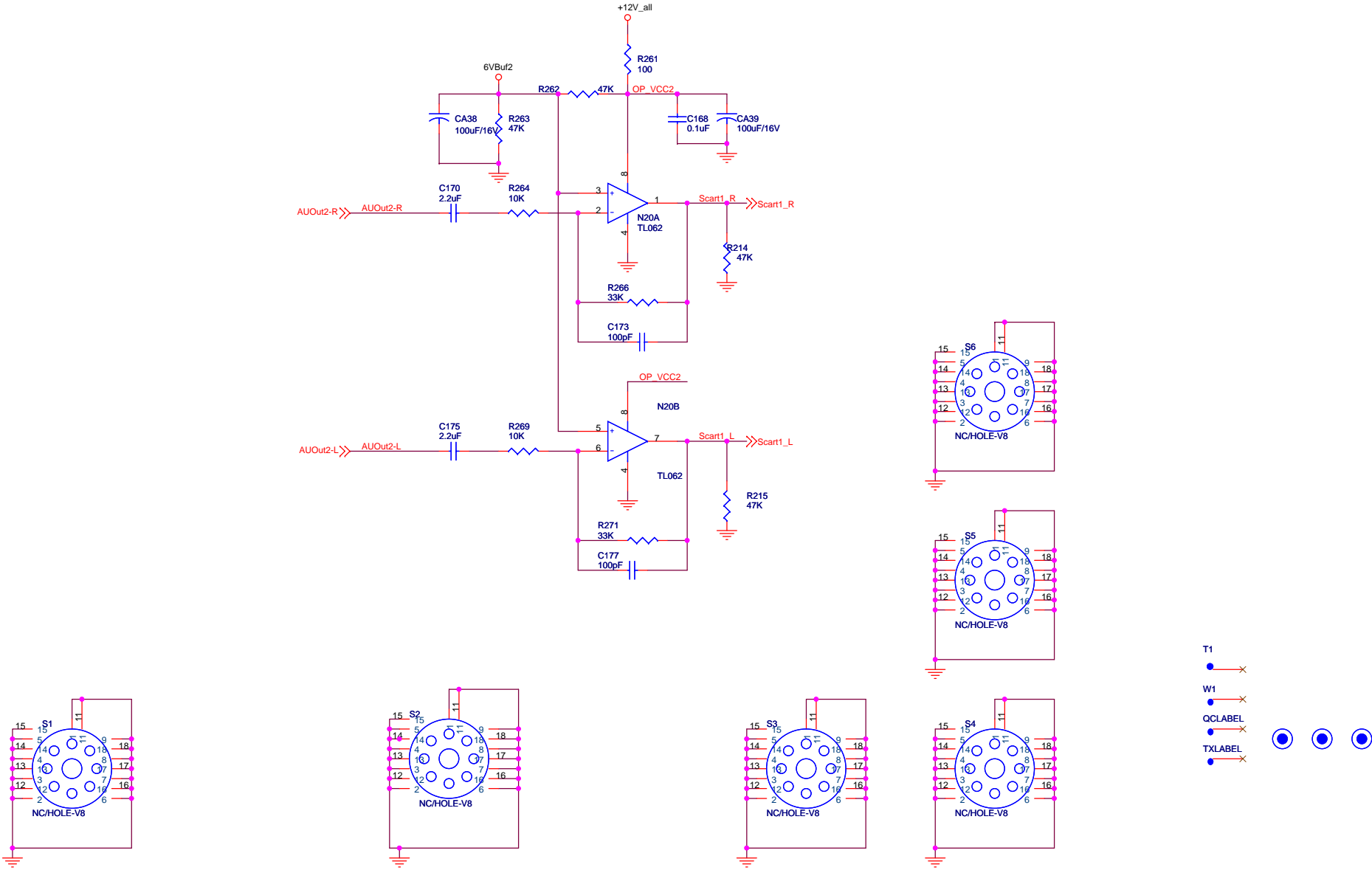


OR AV2&AVOUT



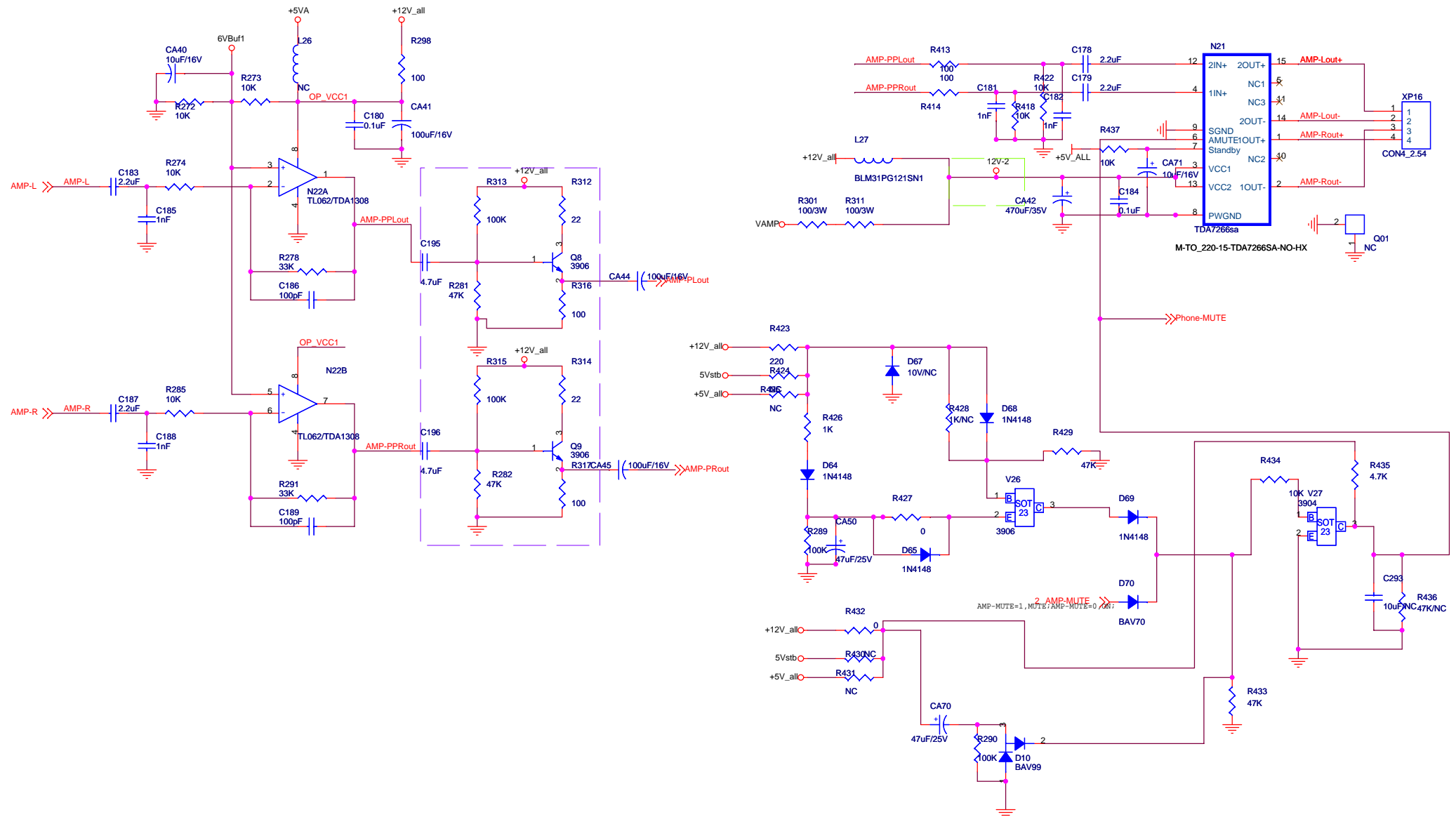
+5VA





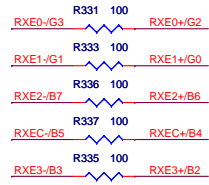
8、AV音频输出部分电路（SCART接口）

FOR TDA1308/PT2308 L26 FB,R298 NC;
FOR TL062 L26 NC,R298 0;

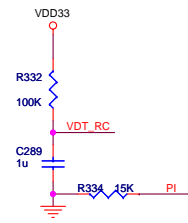


9、音频前置运放、伴音功放及静音控制部分电路

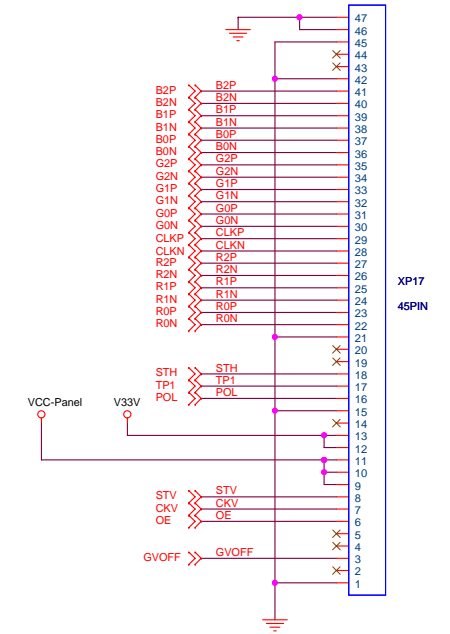
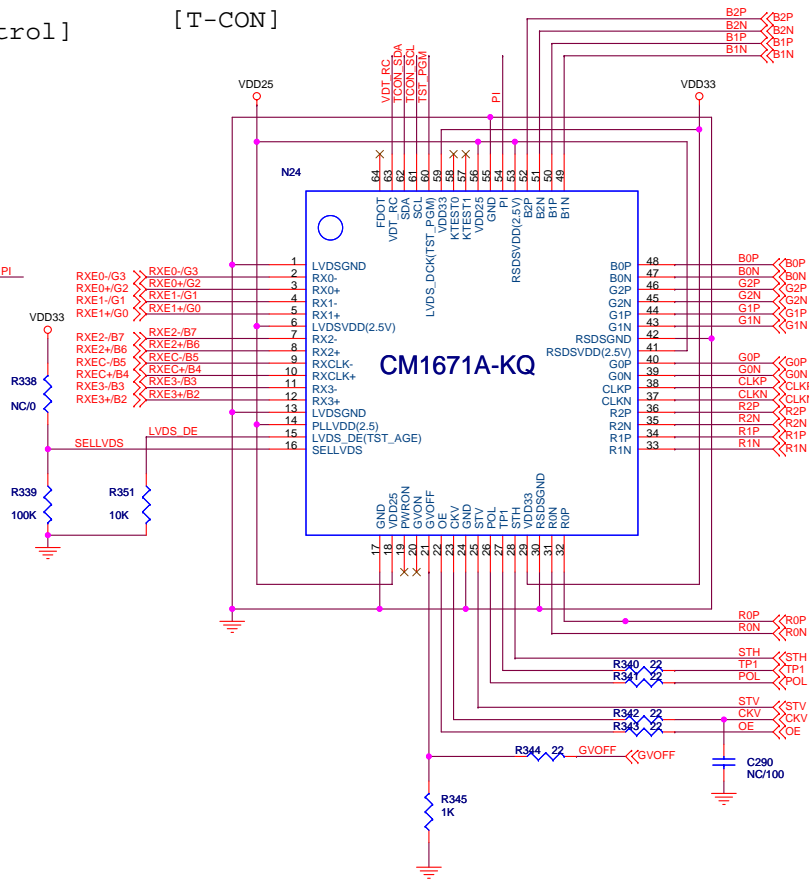
[Terminator near T-CON]



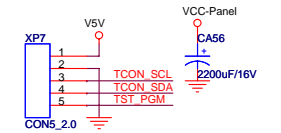
[ASIC Control]



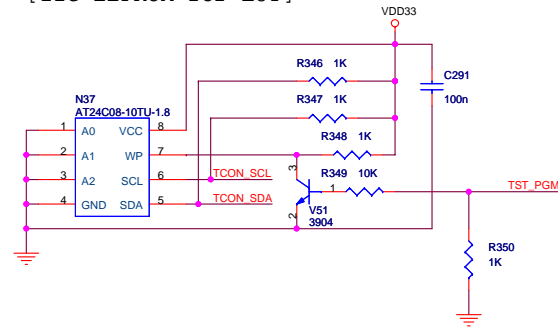
[T-CON]



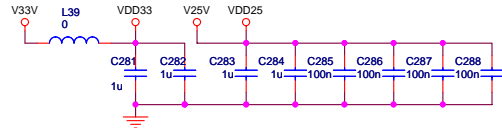
Debug port



[I2C EEPROM for LUT]



[Filter near T-CON]



10、TCON芯片（CM1671A-KQ）、屏供电及LVDS接口部分电路

