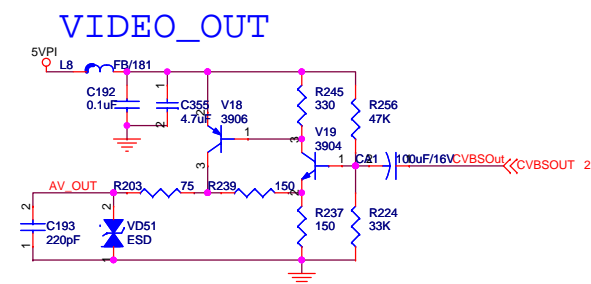
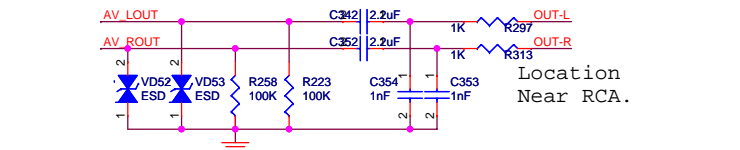
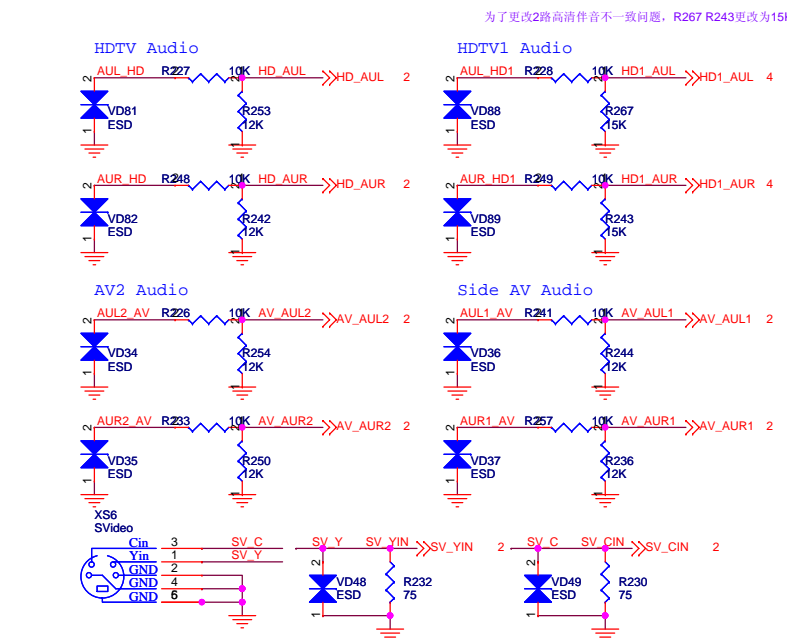
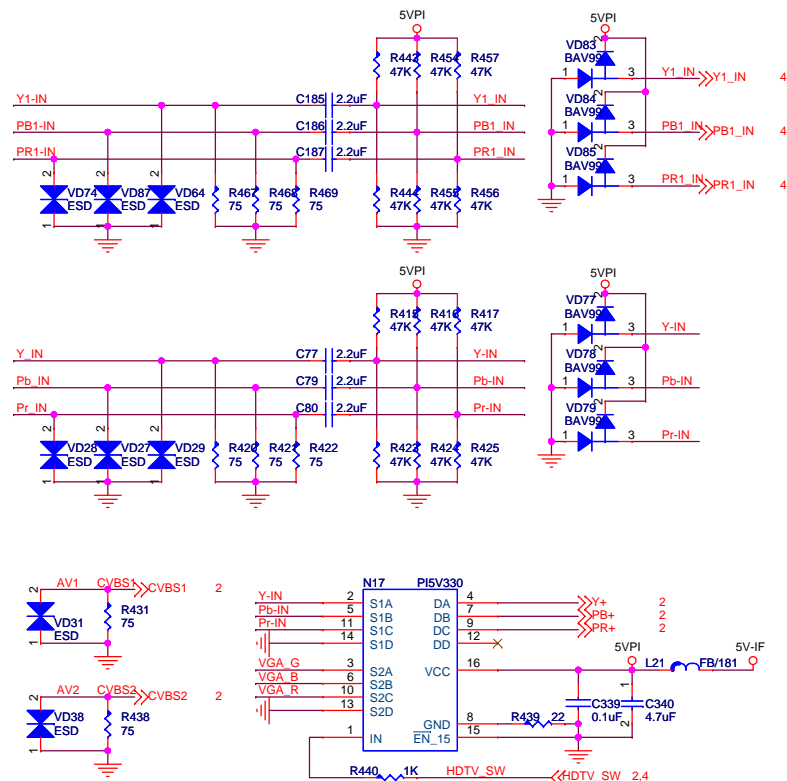
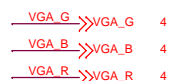
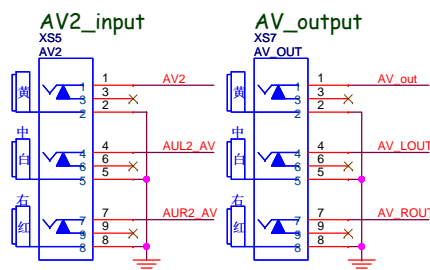
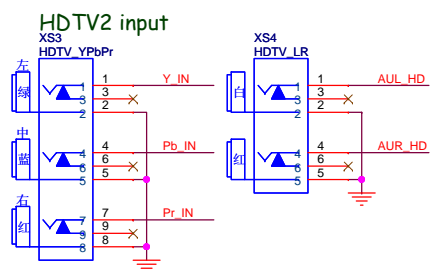
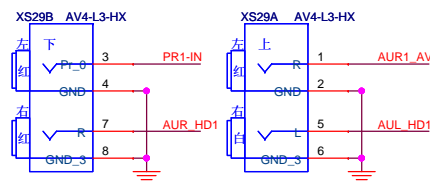
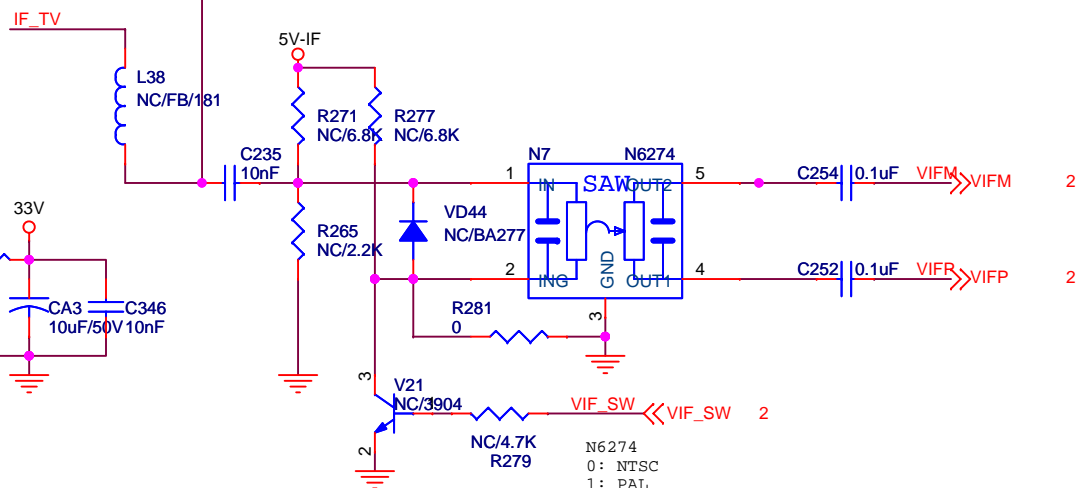
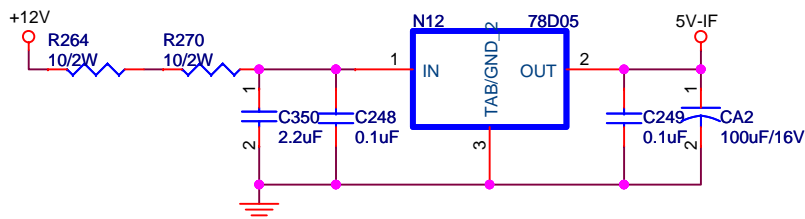
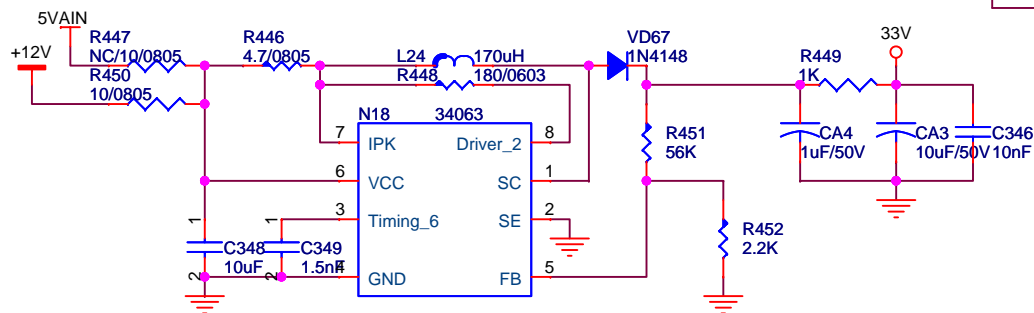
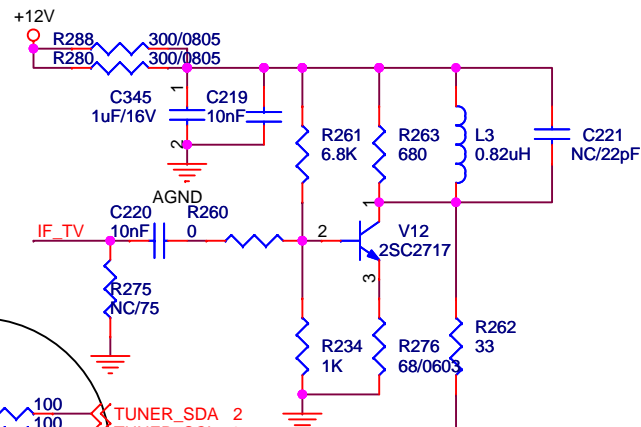
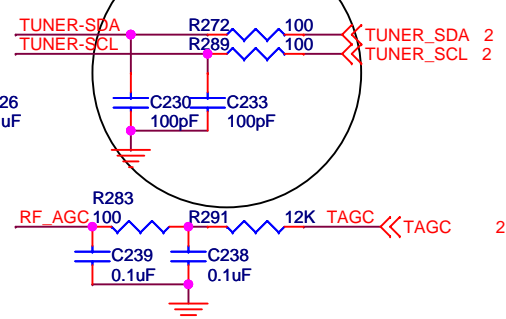
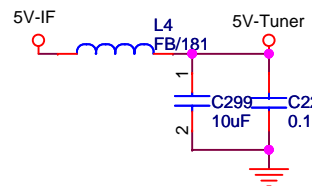
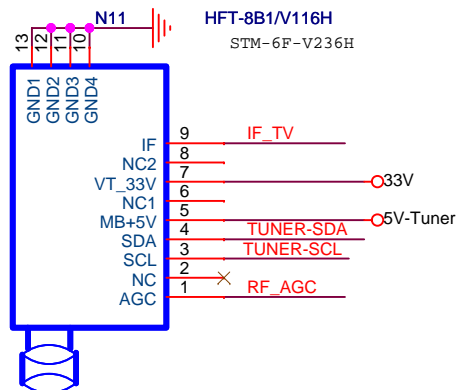


The diagrams show the internal wiring of the XES-1000 camera module for four different models. Each diagram includes a color-coded label for the left and right sides of the module and the corresponding external connection points.

- XS30B AV4-L2-HX:** Left side (Green) has pins 5 (Y1-IN), 6 (GND), 7 (PB1-IN), and 8 (GND_3). Right side (Blue) has pins 1 (Y1-IN), 2 (GND), 3 (PB1-IN), and 4 (GND_3).
- XS30A AV4-L2-HX:** Left side (Yellow) has pins 1 (AV1), 2 (GND), 3 (AUL1), and 4 (AUL1 AV). Right side (White) has pins 1 (AV1), 2 (GND), 3 (AUL1), and 4 (AUL1 AV).
- XS29B AV4-L3-HX:** Left side (Red) has pins 3 (PR1-IN), 4 (GND), 7 (AUR HD1), and 8 (GND_3). Right side (Red) has pins 1 (PR1-IN), 2 (GND), 5 (AUR HD1), and 6 (GND_3).
- XS29A AV4-L3-HX:** Left side (Red) has pins 1 (AUR1 AV), 2 (GND), 5 (AUL HD1), and 6 (GND_3). Right side (White) has pins 1 (AUR1 AV), 2 (GND), 5 (AUL HD1), and 6 (GND_3).



Title				
MST6M48RXS				
Size A3	Document Number			Rev A
Video & Audio				
Date:	Thursday, July 15, 2010	Sheet	5	of 7



Title		
MST6M48RXS		
Size	Document Number	Rev
A4	Tuner	A
Date:	Thursday, July 15, 2010	Sheet 6 of 7

