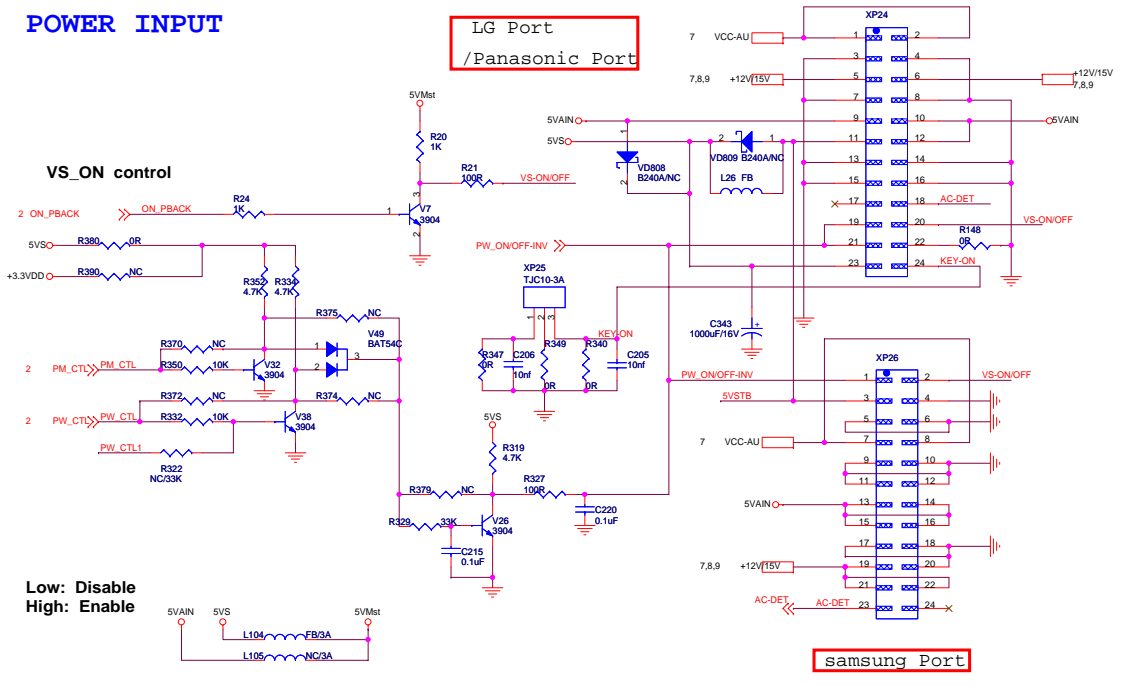
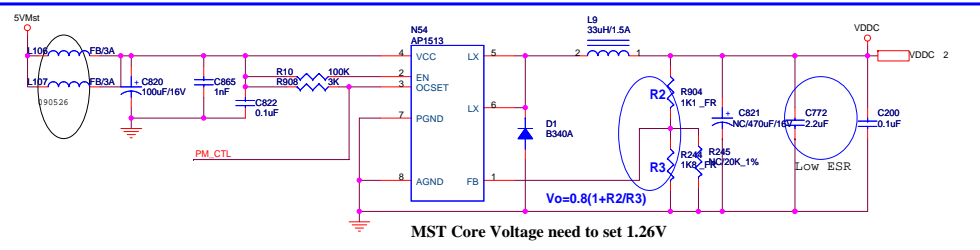


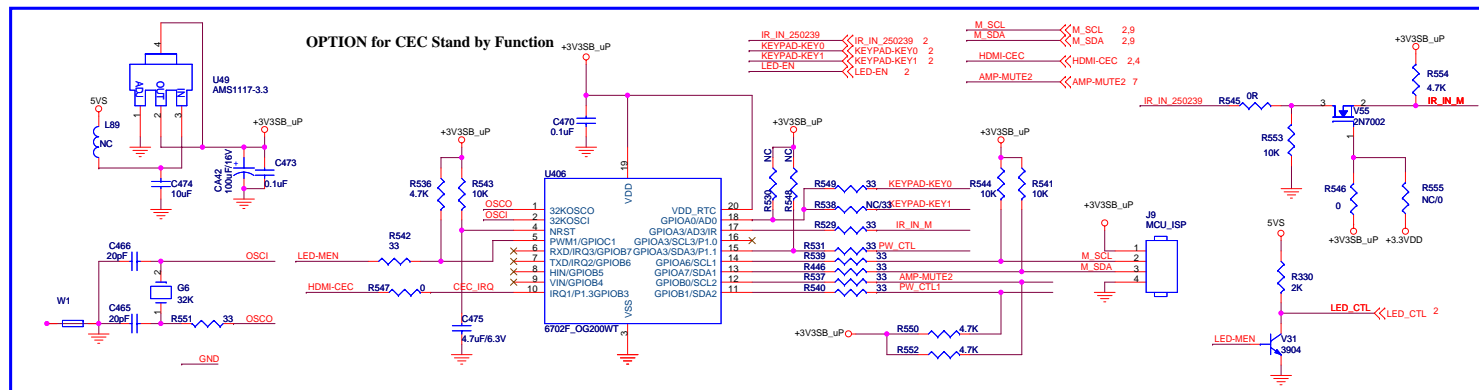
POWER INPUT



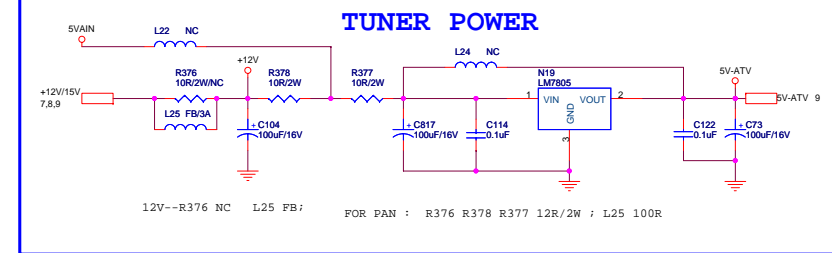
+1.26V FOR MSTAR IC STANDBY POWER



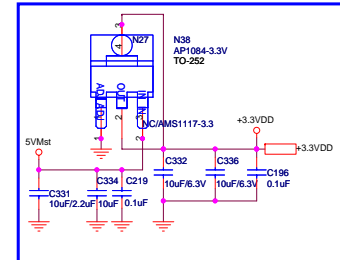
SUB POWER SUPPLY



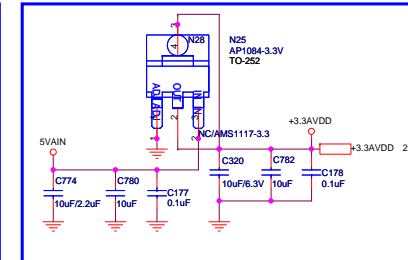
TUNER POWER



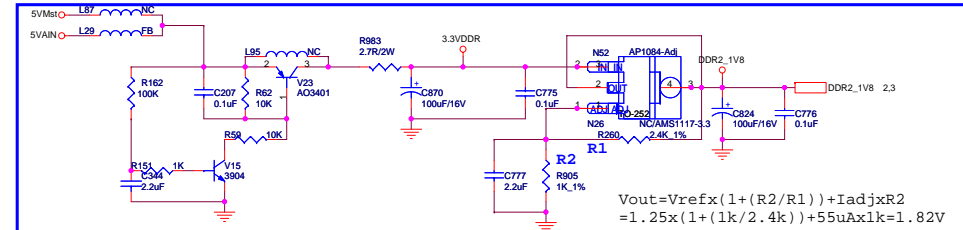
+3.3V STANDBY POWER



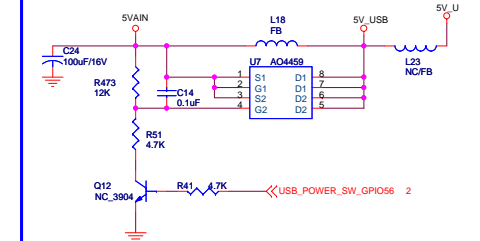
+3.3V NORMAL POWER



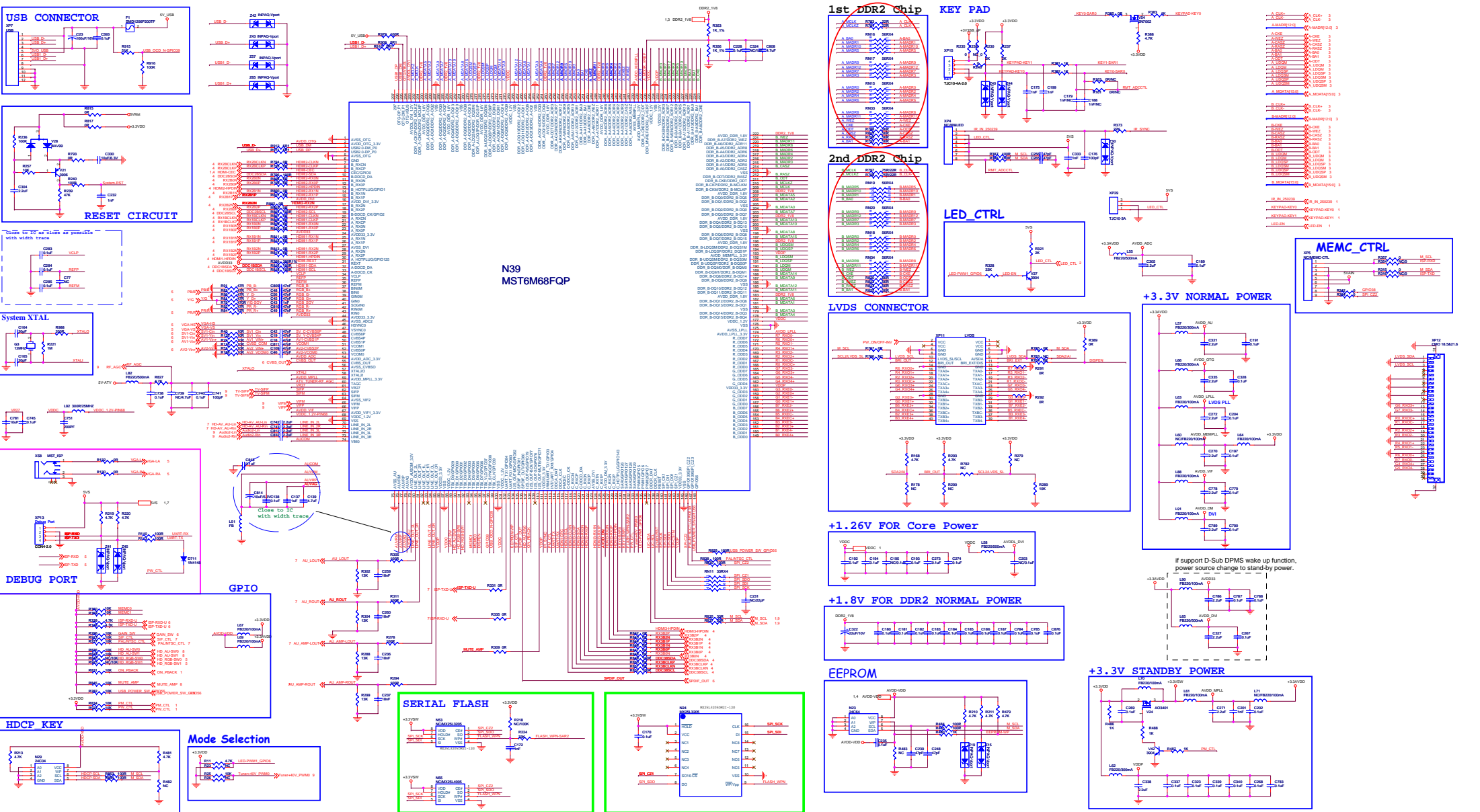
DDR2 Power



USB Power

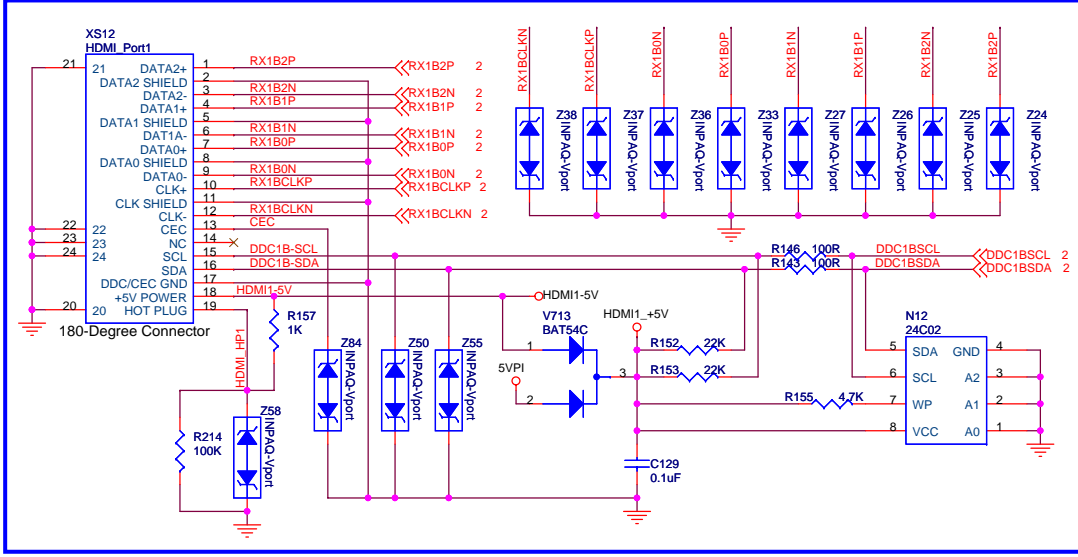


1、电源输入接口、调谐器、待机/正常电源、DDR、MSTAR IC待机、副电源、USB电源供电部分电路

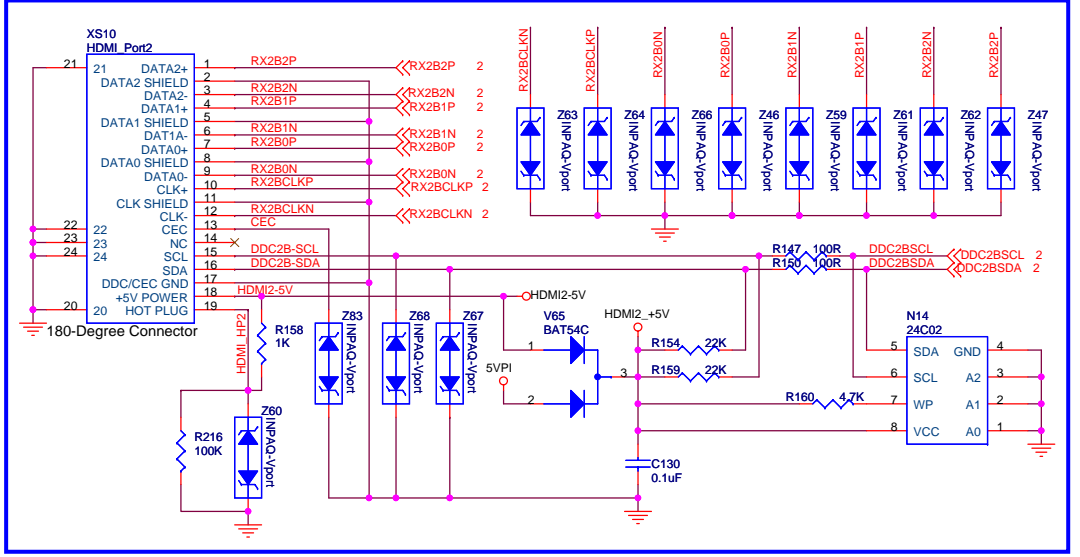


2、MST6M68FQ主芯片及外围匹配网络、复位、USB接口、串行FLASH、EEPROM、LVDS接口部分电路

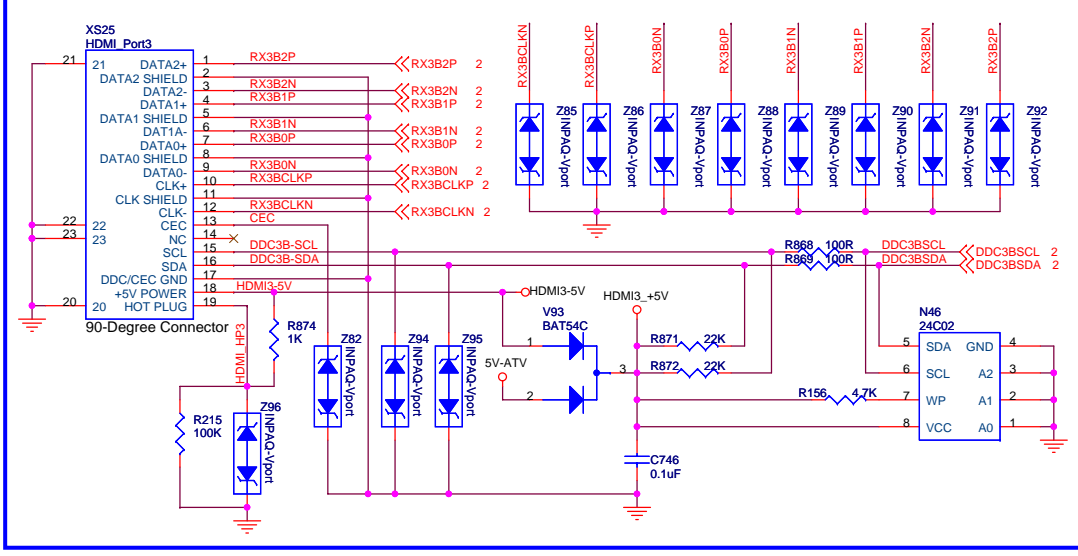
2st HDMI



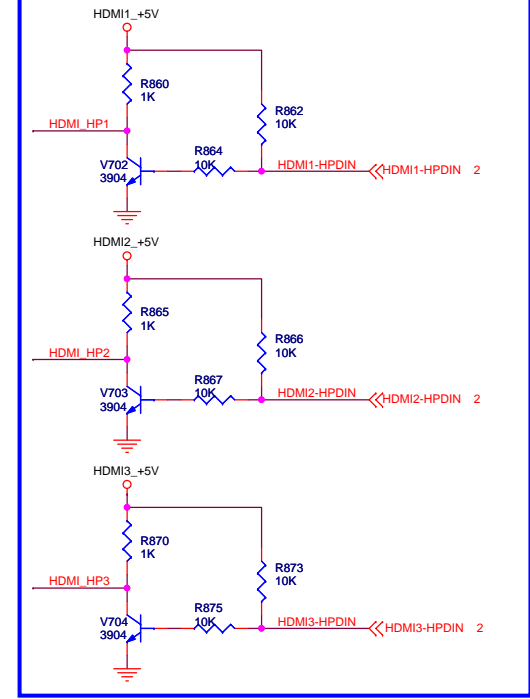
1nd HDMI



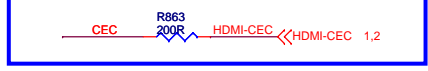
3rd HDMI



HDMI HOTPLUG

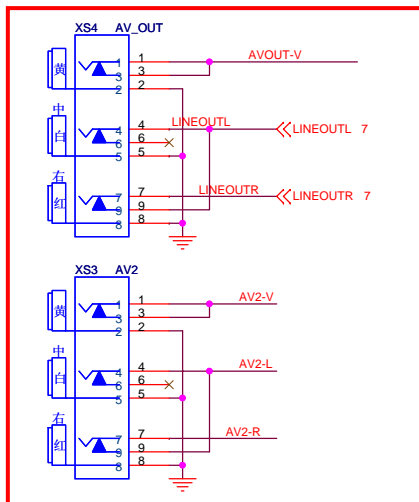


HDMI CEC

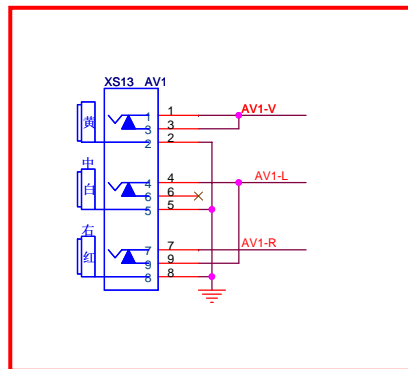
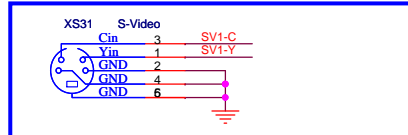


4、HDMI输入接口及外围匹配网络部分电路

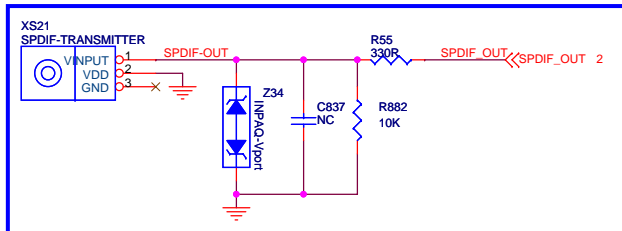
AV INPUT/OUTPUT



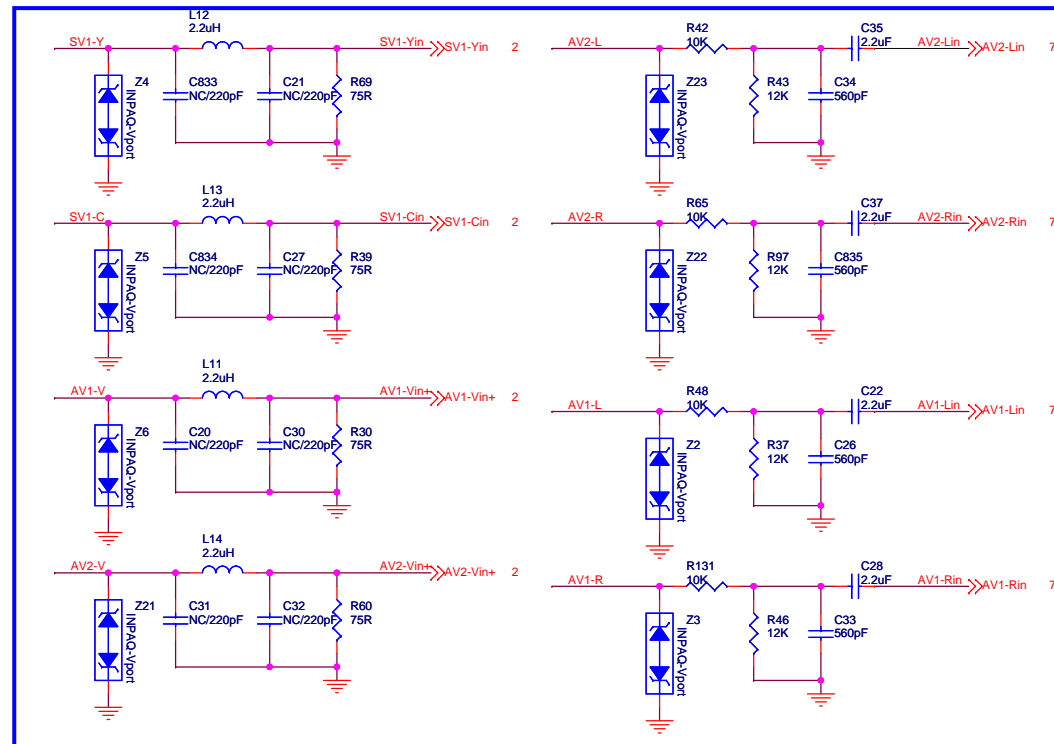
S-Video INPUT



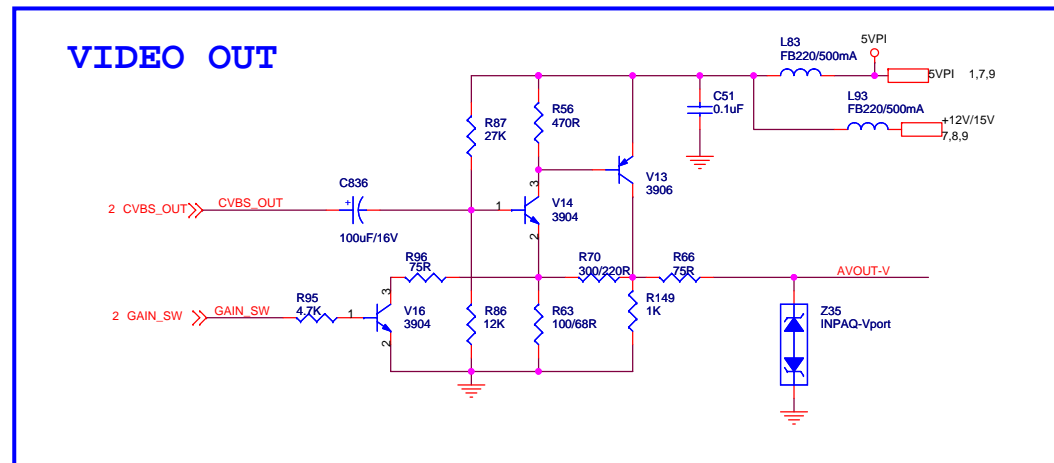
SPDIF OUT



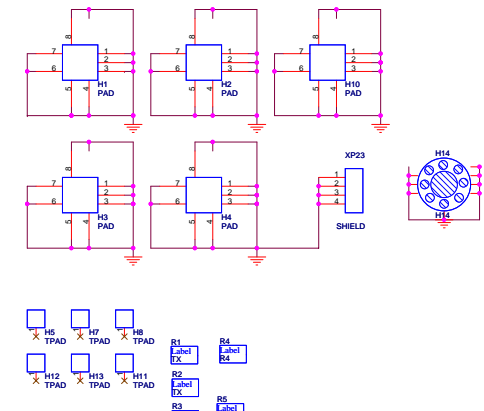
Keep trace width(12mil+)
Keep AGND trace with signal



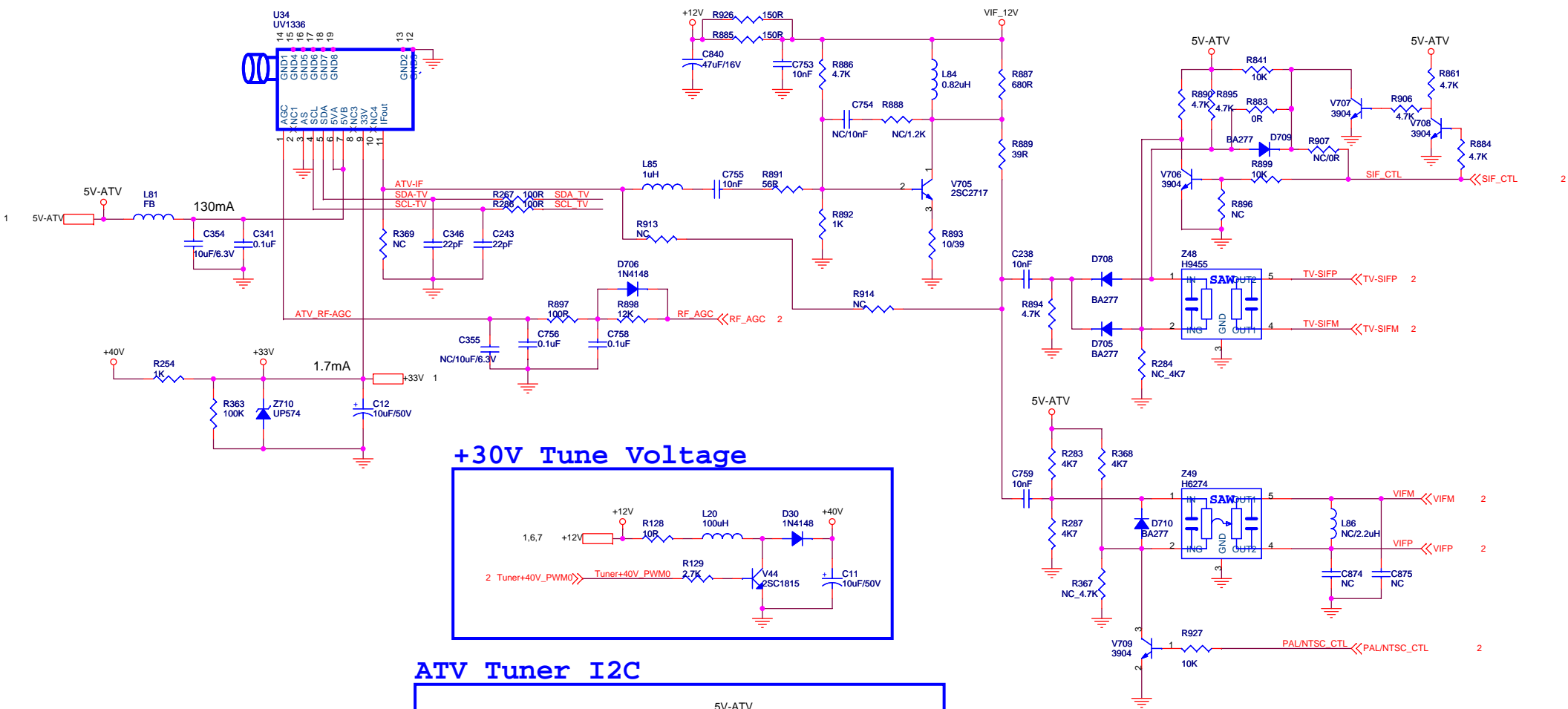
VIDEO OUT



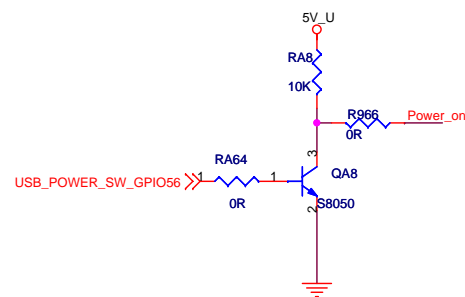
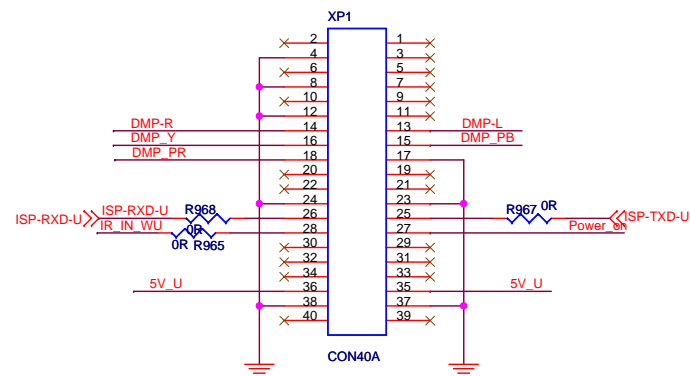
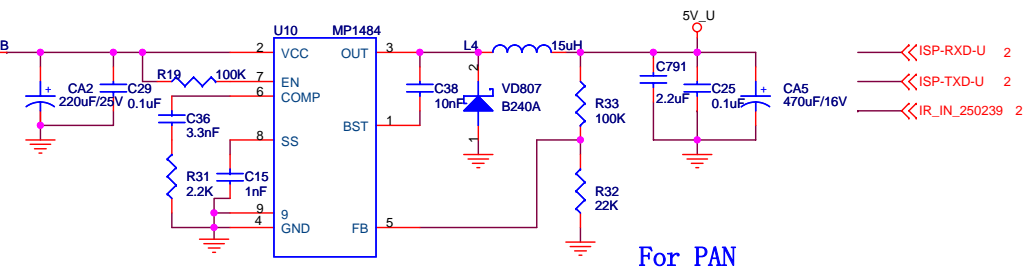
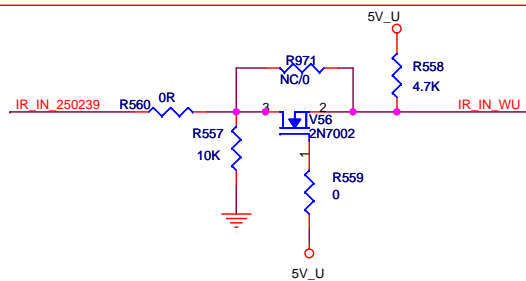
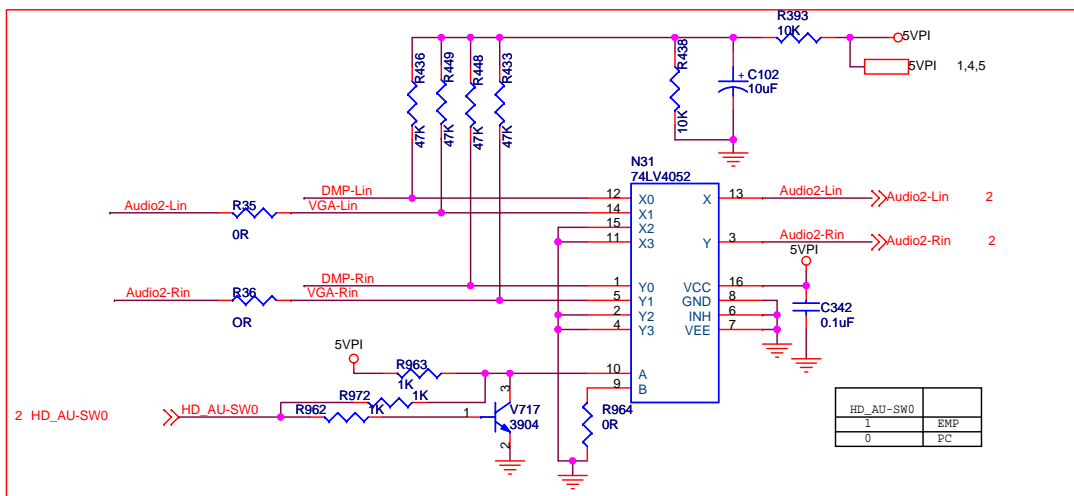
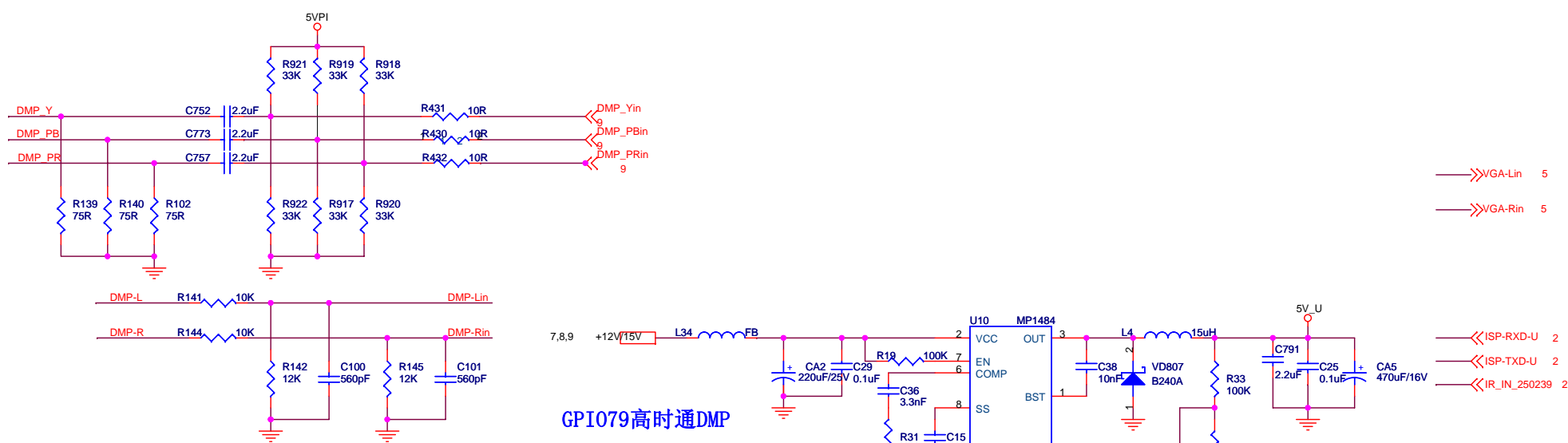
6、AV输入&输出、S端子输入、同轴输出接口及外围匹配网络部分电路

[illegible][illegible]

7、开/关机静音、音频预放大、耳机驱动、音频输出、音频切换、伴音功放及外围匹配网络部分电路



8、高频头、预中放&声表、30V升压电路及I2C总线隔离部分电路



9、DMP接口、DMP&VGA音频切换、DMP遥控、开关控制信号、供电及外围匹配网络部分电路