

请至以下互联网址注册产品以获得
完整的信息服务

www.philips.com/welcome

使用产品前请阅读用户手册（具体操作详见操作
导引）并请保留备用！



产品外形根据型号不同会有所差异，
请以实际机型为准！



6600系列商用智能电视机

32BHF6656/T3

43BFF6656/T3

49BFF6656/T3

55BFF6656/T3

快速 使用指南

PHILIPS

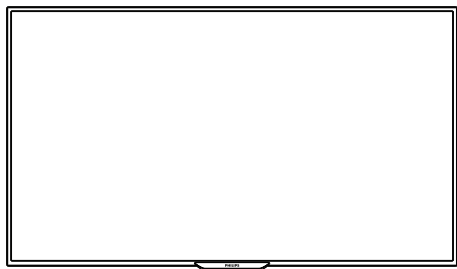
目录

包装清单	3
电池安装方式	4
安装底座	5
连接	6
打开电视	10
操作导引	11

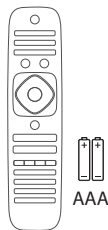


包装清单

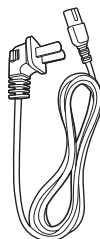
您的产品包装箱内应该含有下列物品：



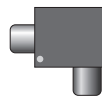
电视机(不含底座)



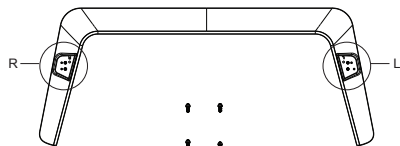
遥控器与
2颗AAA电池



电源线



天线隔离器x1

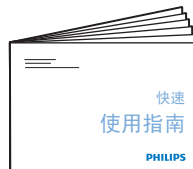


底座含4颗M4的螺丝

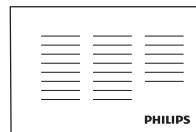
底座（含螺丝）



使用手册



快速使用指南



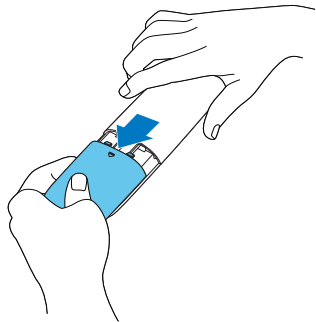
保修卡

1

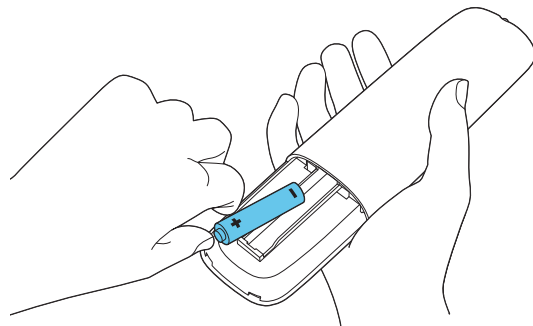
电池安装方式

按下遥控器后方的电池盖后打开电池盖

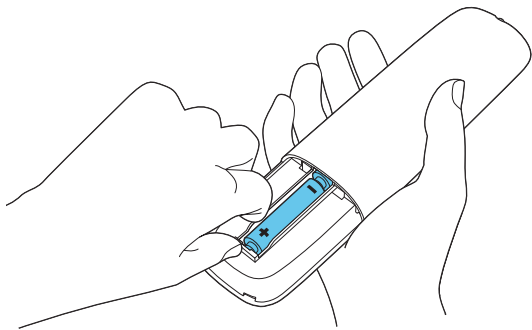
①



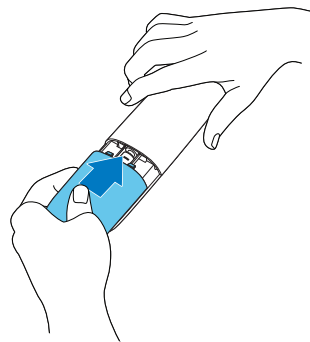
②



③

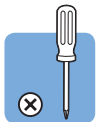


④



依图所示方向放入2颗AAA电池

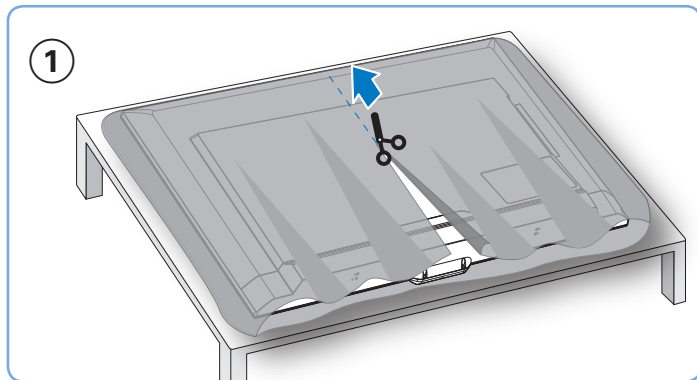
2



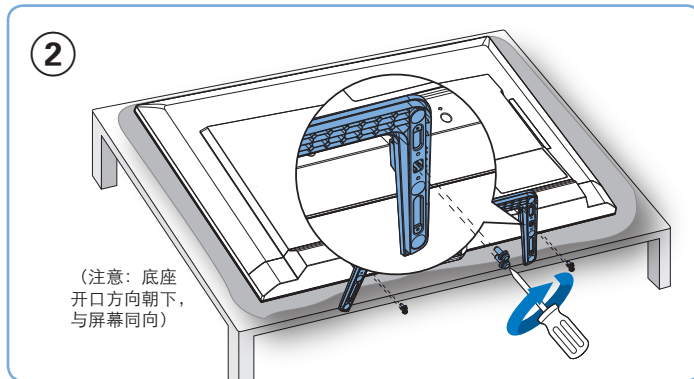
安装底座



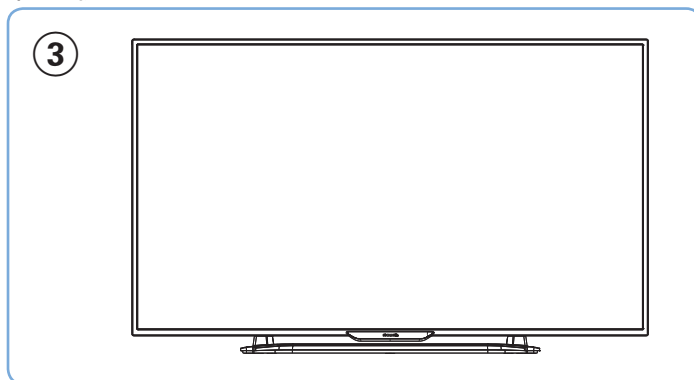
将电视机正面朝下置于平坦处，依图示方向剪开外包装



参照包装清单标识的底座凸点说明，将底座依所示方向装上并锁上螺丝。

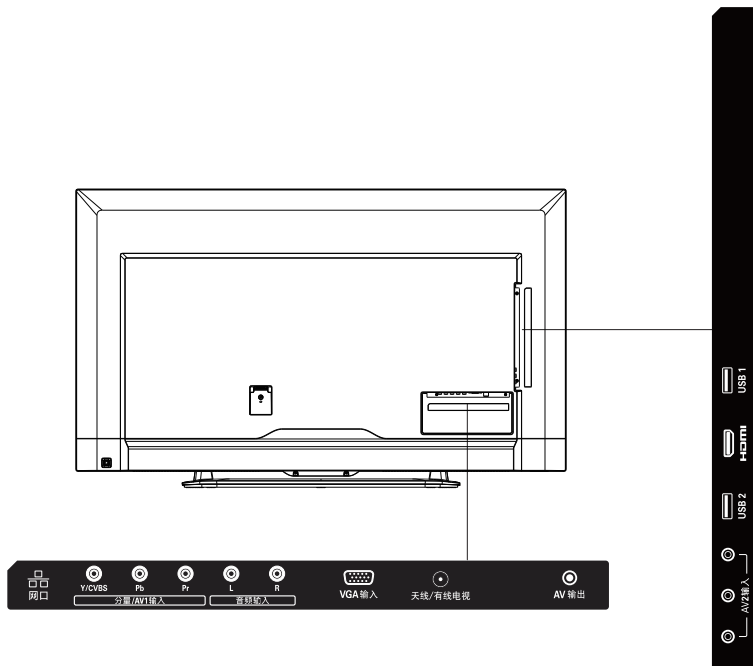


将电视扶起放好



3

连接



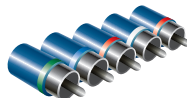
建议使用的影像端子接口：

HDMI



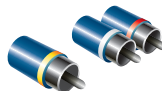
HDMI:
影像画质最佳

YPbPr & AUDIO L/R



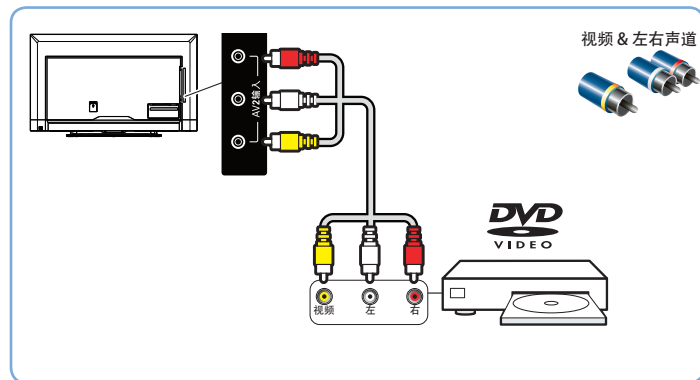
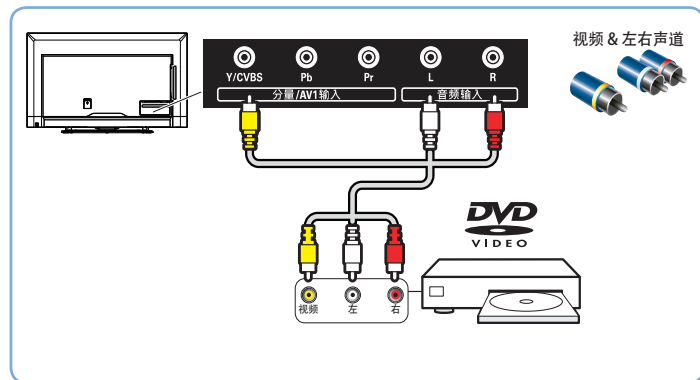
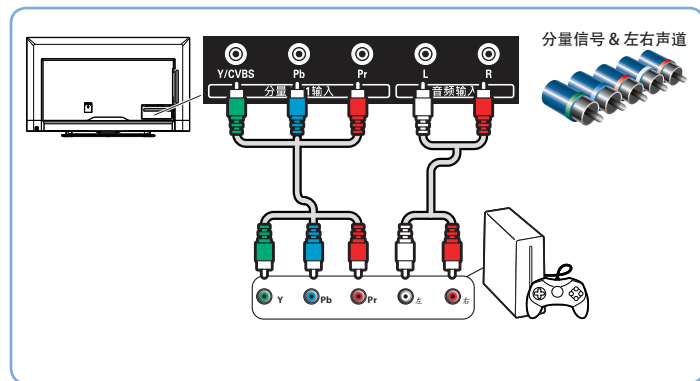
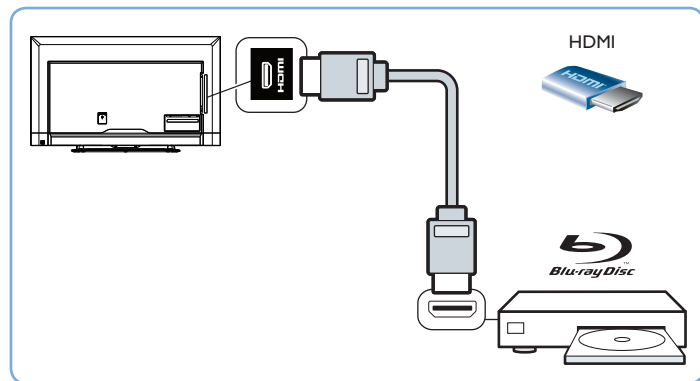
分量端子:
影像画质次佳

视频输入&音频



AV端子:
影像画质普通

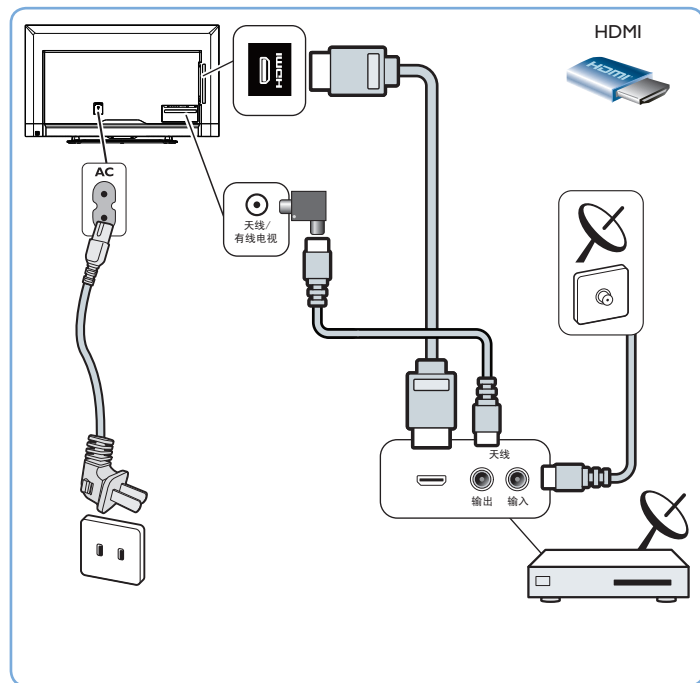
影音端子连接方式



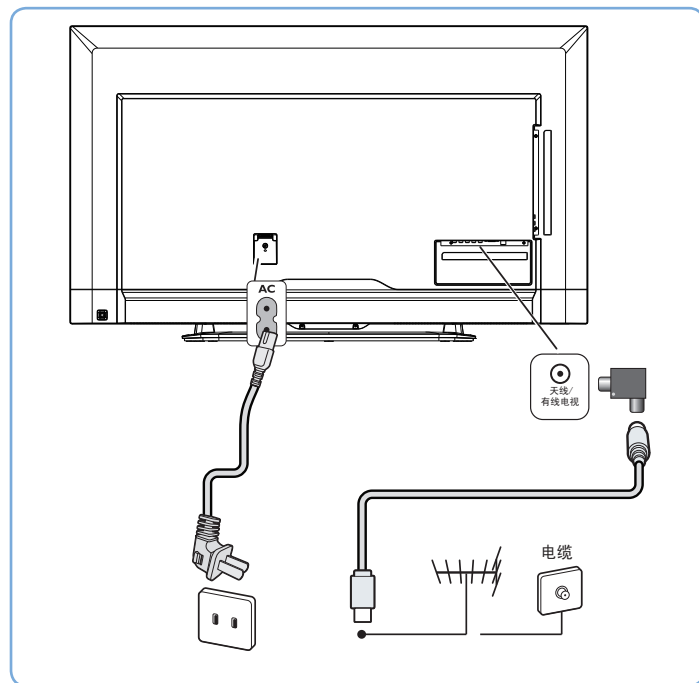
4

接上电源与电视信号

通过机顶盒连接



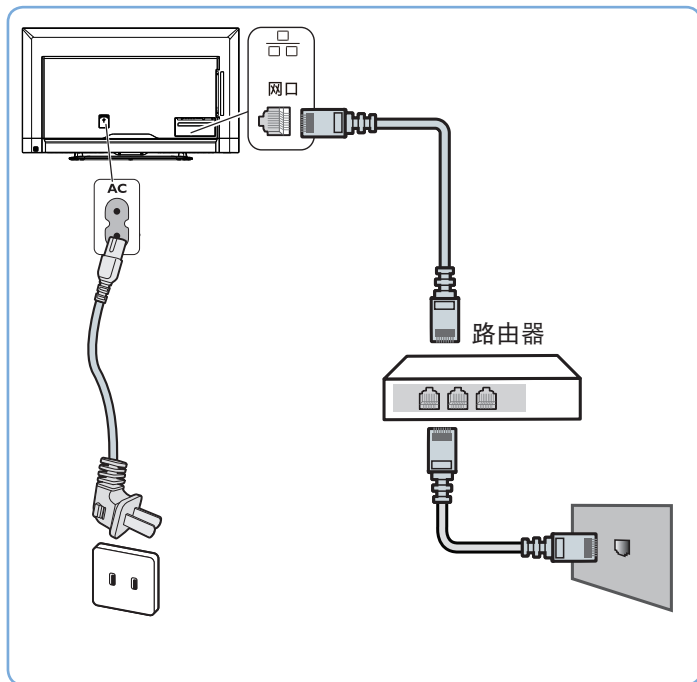
通过天线连接



我们随机附送天线隔离器,请在安装电视的同时一并安装上天线隔离器(安装方式如上图示)。请用户在使用前务必确认天线隔离器是否有安装,若为直接接入,电视机的有线网络天线必须与保护接地隔离,否则可能会引起着火等危险。

5

接上网络信号 有线安装—通过网络电缆

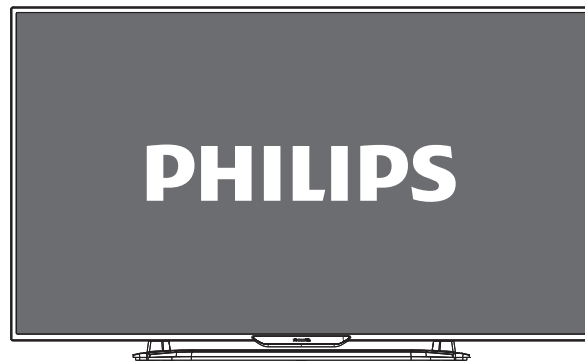
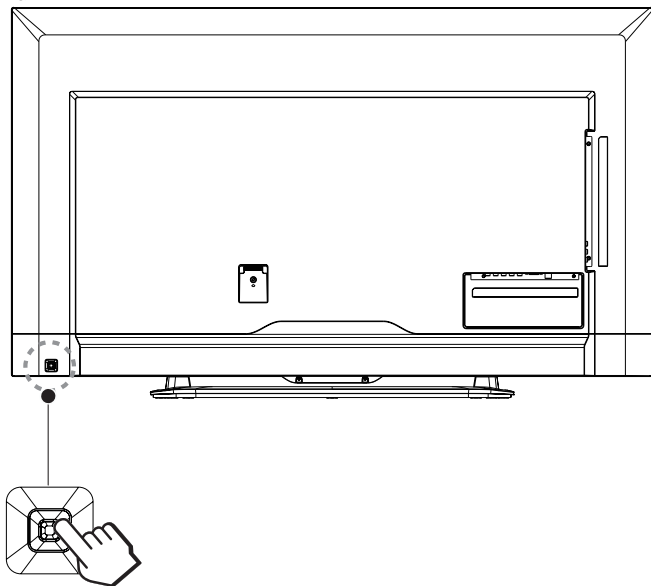


6

打开电视

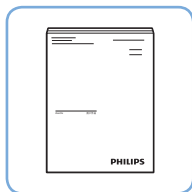
按下电视背面多功能方向键的中间键，打开电视机。

背视图





更多操作信息请参考使用手册与PHILIPS support网站。



www.philips.com/support



扫一扫，马上加入飞迷俱乐部！

享受专属延保、售后等服务，从这里开始！

www.philips.com.cn



所有注册和未注册的商标是其各自所有者的财产。
规格如有变更，恕不另行通知。

Philips 和 Philips 盾牌图形是皇家飞利浦有限公司的注册商标，
其使用需遵循皇家飞利浦有限公司的许可。

出版日期：2015年5月

USB 升级方式

1.拷贝对应机种名软体，如40PFF5650T3

EBONYLite_40PFF5650T3_CN_MSD8561VXM_PCB715G7204_USB_FullHD_TPV_LV
M400J6PE1ADP2P0X_V2.01_20141211.bin到U盘根目录。

2.插U盘到电视USB接口。

3.AC上电or RC power on

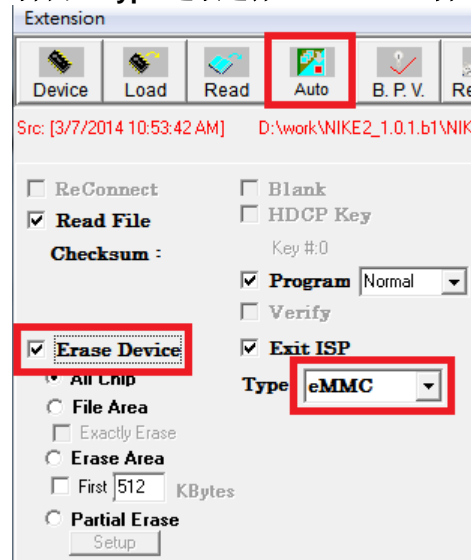
4.TV自动升级(LED灯闪烁)，升级完成后会自动开启，升级过程请勿断电。

5.升级完成后，按RC“功能列表+1999+返回”，进工厂菜单进行reset。

ISP 升级方式

必须用 **v4.6.t2** 以上版本的 ISP tool 工具。

- a. 在“Auto”界面，Type 选项选择“eMMC”，并选中“Erase Device”，具体如下图：



- b. 连接设备

2.1 选择“Read”选项

2.2 选择 Mboot 文件

2.2.1 EISP Loader File 1 → muninn_EISP_boot_xx_xx.bin

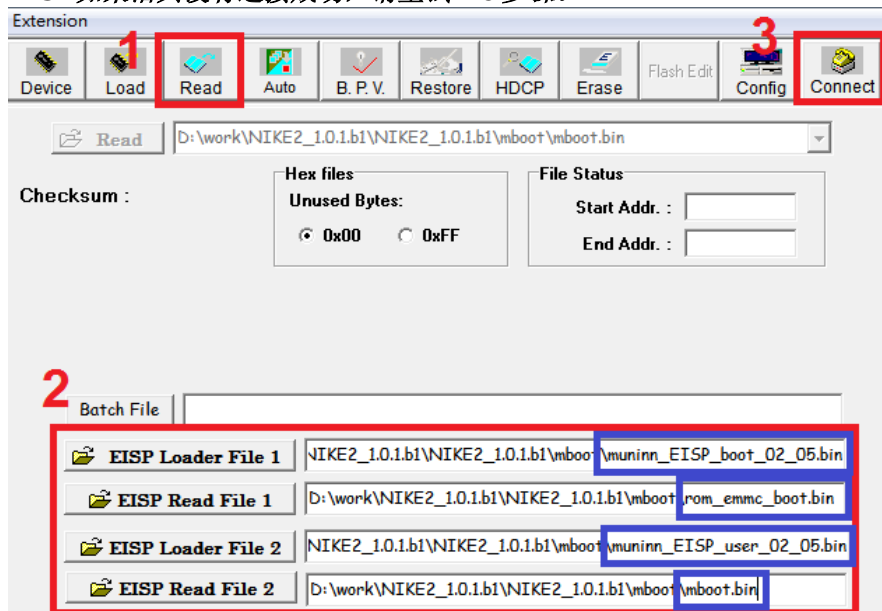
2.2.2 EISP Read File 1 → rom_emmc_boot.bin

2.2.3 EISP Loader File 2 → muninn_EISP_user_xx_xx.bin

2.2.4 EISP Read File 2 → mboot.bin

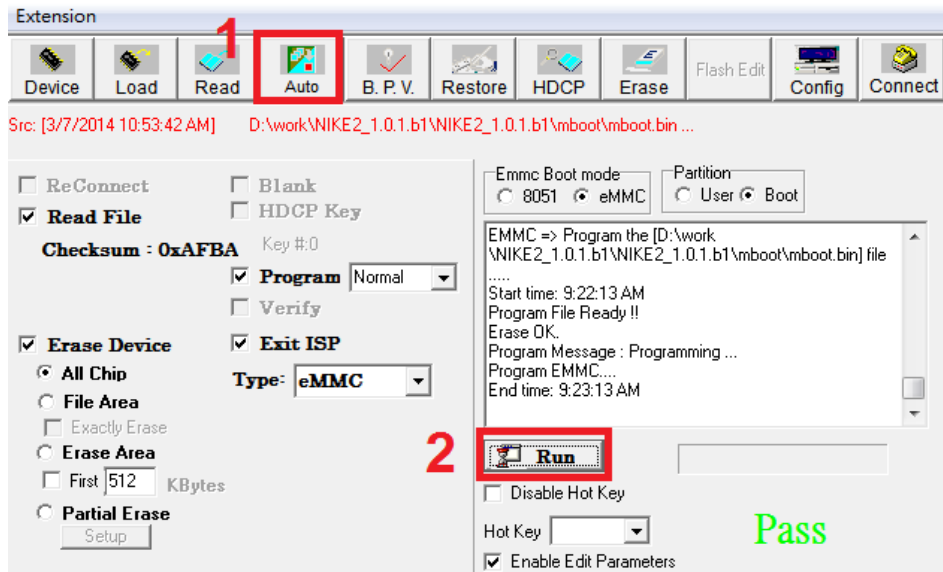
2.3 给设备上电，选择“Connect”进行连接

PS. 如果治具没有连接成功，请重试 2.3 步骤。



c. 治具连接成功后

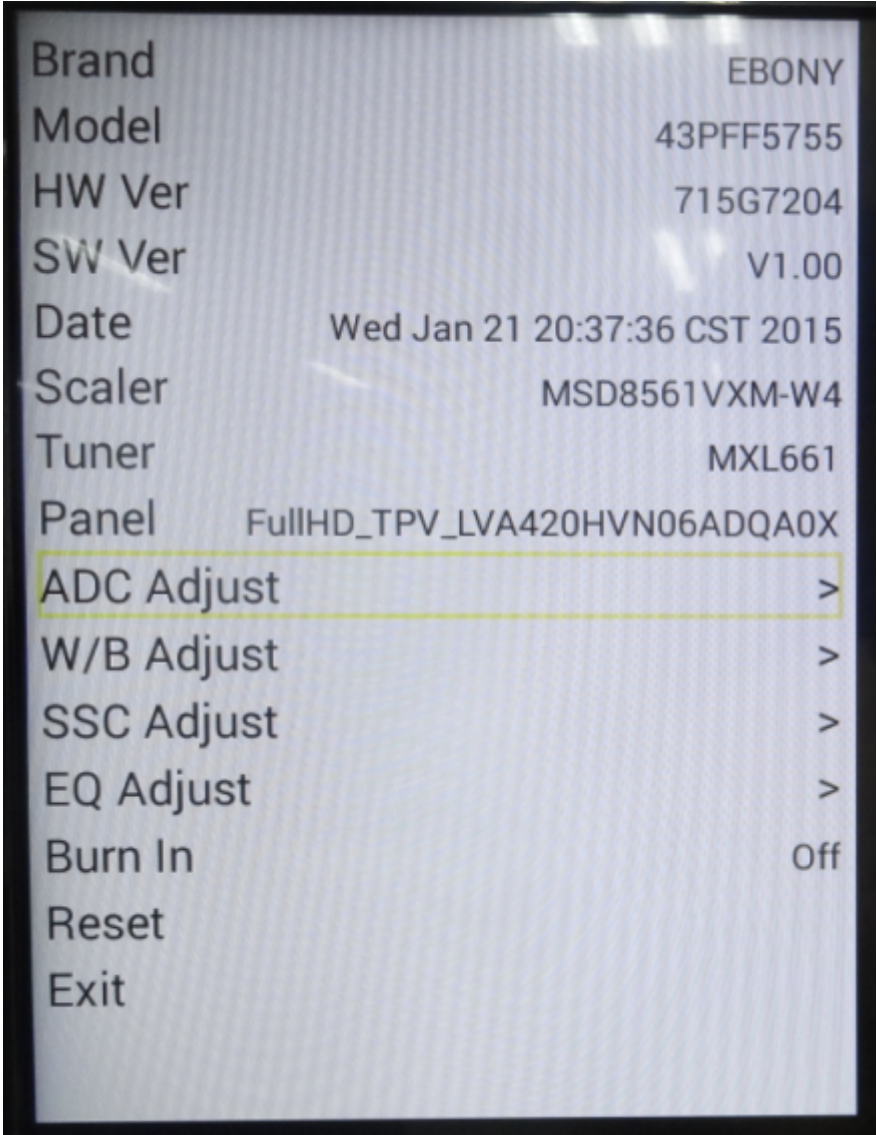
3.1 在“Auto”界面选择“Run”开始烧录



d. 请耐心等待，直至 ISP 治具提示“Pass”，烧录完成。

55BFF6656/T3 机种工厂菜单同 43PFF5755/T3

工厂模式调整：菜单（功能列表）+1999+回看



项目名称	功能说明	备注
Brand	机种品牌	不可调整
Model	机器型号	不可调整
HW Ver	硬体板号	不可调整
SW Ver	软体版本	不可调整
Date	软体发布日期	不可调整
Scaler	主芯片型号	不可调整
Tuner	高频头型号	不可调整
Panel	液晶屏型号	不可调整
ADC	ADC调整	免调

WB	白平衡调整	不建议调整
SSC Adjust	展频调整	不建议调整
EQ Adjust		不建议调整
Burn In	拷机模式	On/Off
Reset	复位	
Exit	退出工厂模式	

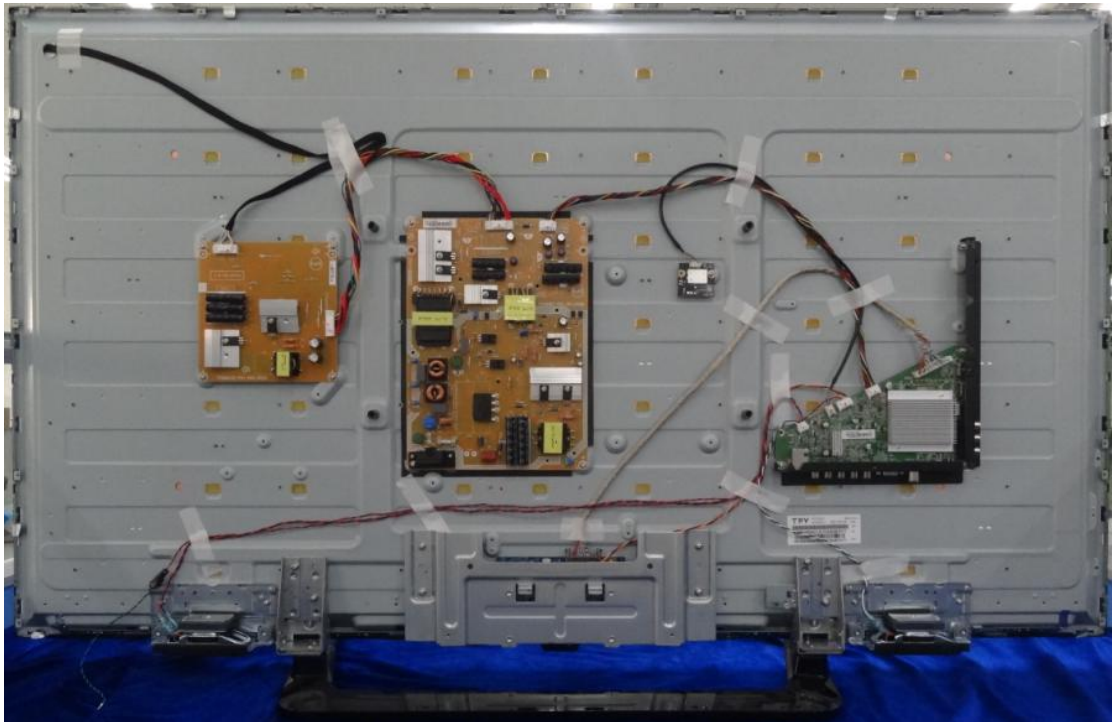
1. 正视图



2. 后视图



3. 内部结构图



版本	发布日期	变更说明	对外机种名
A00	6/26/2015	首次发布	55BFF6656/T3

对内机种名	Scalar
E55F41NDBBP3NNX	MSD8561VXM-W4 HSBGA-590

屏	主板板号	电源板板号
TPT550J1-HVN06.U S410B XM TPV	715G7204M0E000004Y	715G6607P02001002M

升压板板号	按键板板号	遥控板板号
715G6432P01000002H	715G7088K01000004K	715G7055R01000004Y

级别	点位	组件	对象描述
1		036T 600 18129	NONWOVEN FABRTC
1		041G 68508 A	control card
1	Q051	051G 2 14	FUSE GEL
1		0M1G 130 6 47 CR3	SCREW M3 6
1		0M1G1030 4120	SCREW M3 4
1		0M1G1030 6 47 CR3	SCREW M3 6
1		0M1G1730 6120	SCREW M3 6
1		0M1G1730 8120	SCREW M3 8
1		0M1G1740 10120	SCREW M4 10
1		0M1G1740 10120	SCREW M4 10
1		0Q1G 930 8 47 CR3	SCREW
1		0Q1G1030 6 47 CR3	SCREW M3 6
1	317G01	317GAAWF550TCL	WIFI USB IEEE 802.11 b/g/n WF0KRT1510W
1	SP01	378G0110567CDX	6 OHM 11W 132*34*37mm 0 UNIT
1	SP01	378G0110567YDX	6 OHM 11W 132*34*37mm 0 UNIT
1	ECN01	395G801302LC04	HARNESS 2P pitch 2.5-2P pitch 1.25 200m
1	ECN01	395G801302XC04	HARNESS 2P pitch 2.5-2P pitch 1.25 200m
1	ECN9102	395G801414RC52	HARNESS 13P pitch2.0-14P pitch2.0 380mm
1	ECN9102	395G801414XC52	HARNESS 13P pitch2.0-14P pitch2.0 380mm
1	ECN700	395G801416DD32	HARNESS 12P pitch2.0-16P pitch2.0 500mm
1	ECN700	395G801416RD32	HARNESS 12P pitch2.0-16P pitch2.0 500mm
1	ECN107	395GH12506DT003000	HARNESS 5P pitch1.25-6P pitch2.0 400mm
1	ECN107	395GH12506HT003000	HARNESS 5P pitch1.25-6P pitch2.0 400mm
1	ECN600	395GH20004DT002000	HARNESS 4P pitch2.0-B&R+B&W 850 + 400 m
1	ECN600	395GH20004RT002000	HARNESS 4P pitch2.0-B&R+B&W 850 + 400 m
1	ECN400	395GH20014DT013000	HARNESS 14P pitch2.0-5P pitch1.25+2P pi
1	ECN400	395GH20014XT013000	HARNESS 14P pitch2.0-5P pitch1.25+2P pi
1	ECN401	395GLT5140R0010000	LVDS CABLE 51P(0.5mm)-40P(2.0mm) 600mm
1	ECN401	395GLT5140X0010000	LVDS CABLE 51P(0.5mm)-40P(2.0mm) 600mm
1	RC01	398GR08BCPH00H	REMOTE Philips HOF-44K-GJ12867 chinese
1		708GVB020WPX01	Ebony 40 (208 NA)
1	E750	750TBV550V64B8N000	LCD TPT550J1-HVN06.U S410B XM TPV
1		756TXFCB01D065000X	MCU ASSY
1		ADTVE1220XB8	ADAPTER BOARD NA
1		CBPFEMSDA5	CONVERSION BOARD NA
1		IRPFFAA9	IR BOARD
1		KEPFEEA9	KEY BOARD
1		LNTVEW661XXA6	CONVERTER BOARD --
1	E750	LVA550HVN06ACL2P0X	PANEL TPT550J1-HVN06.U S410B XM TPV
1		P33E0738XJL01T0100	KEY_FUNCTION
1		P33E0756ALDZ1C0100	DECO_LOGO
1		P33E0757ADT01L0100	DECO_REAR_COVER
1		P34E23680GM0FK0400	REAR_COVER NA
1		P34E2486ADT02L0200	BASE NA
1		P40GD000813 9A	A4 PALLET LABEL -for A4 paper
1		Q02G707105000100XL	BOLT
1		Q02G708105500100HX	BOLT
1		Q11G701100500100JY	CB-SUPPORT
1		Q12G6300 25 1	FOOT PAD

1	EQ52C1	Q12G714001200100HK	HEAT PAD
1		Q40G0001624 4A	产线需求的栈板LABEL
1		Q44T3231 21 11	EVA WASHER
1		Q45G88010TV05500WN	PROTECT BAG
1		Q45G88010TV12000WN	PROTECT BAG 1200*1600
1		Q49G 51500 HF	panel清洁剂
1		Q50G 500 TV005	CABLE TIE
1	Q052	Q52G100203000A00ZA	AL FOIL
1		Q52G130118600000YY	TAPE
1		Q52G1501150523AWBK	TAPE_INSULATING
1		Q52G160119100A00YY	TAPE
1		X15T966610100000BL	BKT_BASE
1		X15T968010100000NP	BKT_STAND
1		X15T968110100000NP	BKT_STAND
1		X15T984710100000GH	BKT_STAND
1		X15T986310100000GH	BKT_SPEAKER
1		X15T995630100000BL	BKT_IO
1		X15T9957501000GMYF	BKT_IO
1		X40G2014040X8100XY	IO LABEL
1		X40G2014055X2500ZA	IO LABEL
1		X44GVB021010FA	CUSHION-TL N/A China(2002)
1		X44GVB022010FA	CUSHION-B N/A China(2002)
1		X44GVB023010FA	CUSHION-BL N/A China(2002)
1		X44GVB024010FA	CUSHION-BR N/A China(2002)
1		X44GVB02501EPE	CUSHION N/A China(2002)
1		X44GVB0281303A00JA	ARTWORK CARTON Ebony 55BFF6656/T3 china
1		X52G18012660000ALF	INSULATING SHEET
1		X52G200124700000BK	TAPE
1		0M1G1740 18120 H1	SCREW M4 18
1	317G02	317GARFM008TCL	RF MODULE GL03-2-E
1	E08901	389G214A15NHLL	AC POWER CORD 1500 for China
1	BT01	392GB1JA1A3E2C	BATTERY 1.5V 2P LR03(KA)2S/G
1		Q45G88010TV05600X1	PROTECT BAG
1		X41G43MV81303A	MANUAL 32BHF6656/T3 43_49_55BFF6656/T3
1		X41G43SV81309A	QSG 32BHF6656/T3 43_49_55BFF6656/T3 BTV
1		X41G78DV81311D	WARRANTY CARD TPV address china
1		040G 58162435A	MANUAL P/N LABEL
1		Q40G000162492A	CEL LABEL FOR TV MODEL G3/1.3/0.5
1		X40G0001624 2A	Label for screw pe bag
1		X40G000181310C	CARTON LABEL
1		X40G055081372A	RATING LABEL 55BFF6656/T3
1		Z40G0002ALL01A	OTHER LABEL
1		708GVB020WPX01	Ebony 40 (208 NA)
2		Q07G010513802C00BL	WOOD PALLET
2		Q07G012313802C00BL	WOOD PALLET
2		Q44G6002134101	PAPER BOARD
2		Q44G6002137120	PAPER BOARD
2		Q44G9003180	CORNER PAPER
2		Q45G 77 5	PE PACKING
2		Q50G 4 10	TIE (Y1900221)

2		Q52G1301 9	BIG TAPE FOR PHILIPS
2		X44G6002CP521A	PAPER CAP5
2		X44G6002CP551A	PAPER CAP5
1		756TXFCB01D065000X	MCU ASSY
2	SMTF-U404	100TPMVS019DTX	PHP 55BFF6656/T3 EMMC V2.02 3B309AFF
2	U404	356G333304A600	sAND FLASH THGBMBG5D1KBAIT 4G BGA 153
1		ADTVE1220XB8	ADAPTER BOARD NA
2		Z40G0002ALL01A	OTHER LABEL
2	CN9102	033G380214B YH	WAFER 2.0mm 14P W2015-14RVA-S01
2	IC9104	056G 139 9	IC EL817M(X) photocoupler DIP-4
2	IC9304	056G 139 9	IC EL817M(X) photocoupler DIP-4
2	IC9102	056G 139 9	IC EL817M(X) photocoupler DIP-4
2	Q9105	057G 667929	MOSFET AOTF8N50 8A 500V TO-220FP
2	Q9106	057G 667929	MOSFET AOTF8N50 8A 500V TO-220FP
2	C9906	063G107M47410M	CAP X2 470NF 20% 275V R46KI3470HAP1M
2	C9905	063G107M47410M	CAP X2 470NF 20% 275V R46KI3470HAP1M
2	C9117	067G215Z102 6K	LOW ESR EC 1000uF M 35V 10*35mm
2	C9131	067G215Z102 6K	LOW ESR EC 1000uF M 35V 10*35mm
2	C9307	067G215Z152 6K	EC 1500UF 20% 35V 10*40 5000 hr
2	C9306	067G215Z152 6K	EC 1500UF 20% 35V 10*40 5000 hr
2	FB9801	071G 55906	FERRITE CORE 510R C8B R6H 6x9.2(A)
2	L9103	073G 253191 HP	CHOKE COIL 1.1uH VOC
2	L9103	073G 253191 LP	CHOKE COIL 1.1uH VOC
2	CN9901	087G 50147D HC HF	AC R/A 2P 12.81mm
2	D9801	093G 52918	RECTIFIER 1N5408G-04 X0 3A 1000V DO201AD
2	FORCN9901	0Q1G 340 8140	SCREW Q1-SELF TAPING SCREW :Q x8.0
2	CN9101	311GW200C16BBX	ONN 2.0mm 16P R/A W2010-16RVA-S04,B200
2	RV9901	361G0046681KZE	VARISTOR 680V 10%
2	NR9901	361G0058259MYW006A	NTCR 2.5R 20% 3.1W SCK132R56MTY504
2	NR9902	361G0058259MYW006A	NTCR 2.5R 20% 3.1W SCK132R56MTY504
2	R9808	361G3SWJ10859B00TZ	RST NWR 0.1R 5% 3W NKNP3WS0R1JMS10
2	C9801	363G210K105GZP	CAP MPP 1uF 10% 450V 18.1*12.6*8.5 ECWF
2	C9111	363G211J2235HA	CAP MPP 22nF 5% 1KV 18*5*11 R75QI2220HA0
2	C9812	367G215X680PKZ000S	EC 68uF 20% 450V 12.5*50 2000 hr 620mA
2	C9811	367G215X680PKZ000S	EC 68uF 20% 450V 12.5*50 2000 hr 620mA
2	L9903	373G0174301H00	LINE FILTER 0.25mH MIN 2A LCL-11010 HA
2	L9903	373G0174301X00	LINE FILTER 0.25mH MIN 2A 3LFT1064-251M
2	L9902	373G0174303H00	LINE FILTER 18mH MIN 1.26A LCL-11822 HA
2	L9901	373G0174303H00	LINE FILTER 18mH MIN 1.26A LCL-11822 HA
2	L9901	373G0174303X00	LINE FILTER 18mH MIN 1.26 3LFT18106-183
2	L9902	373G0174303X00	LINE FILTER 18mH MIN 1.26 3LFT18106-183
2	L9801	373G0174308H01	PFC CHOKE 220uH 10% 2A GL-13240 HA
2	L9801	373G0174308X01	PFC CHOKE 220uH 10% 2A 3TRATQ32-221K
2	L9302	373G0253247H00	CHOKE COIL 3UH 15% DR8*8 5A
2	L9301	373G0253247H00	CHOKE COIL 3UH 15% DR8*8 5A
2	L9302	373G0253247X00	CHOKE COIL 3UH 15% DR8*8 5A
2	L9301	373G0253247X00	CHOKE COIL 3UH 15% DR8*8 5A
2	T9301	380GL32P141H02	X'FMR 360uH 10% 5uH ER31 BCK-13142-HA
2	T9301	380GL32P141N02	X'FMR 360uH 10% 5uH ER31 YUVA-2133-26
2	T9101	380GL52P186H00	X'FMR 830uH 12% 160uH EE42 BCK-14234-H

2	T9101	380GL52P186YS0	X'FMR 830uH 12% 160uH EE42 YS04160730
2	BD9902	393G0050460600	BRIDGE TS10P06G-04 10A 800V TS-6P
2		705TAD84023	F9901
2		705TAD93119	Q9801&Q9802
2		705TAD93120	Q9301
2		705TAD93121	Q9303
2		705TXE93083	D9103&D9104 ASSY
2		ADE1220XB8SMT	ADAPTER BOARD FOR SMT
1		CBPFEMSDA5	CONVERSION BOARD NA
2		Z40G0002ALL01A	OTHER LABEL
2	C607	067G315M1514LV	EC 150UF 20% 25V RTR151M1ECCF0807P 8*7
2	C608	067G315M1514LV	EC 150UF 20% 25V RTR151M1ECCF0807P 8*7
2	CN101	088G 78G152ACL	RCA JACK R/A 12P G/BL/R/W/R 1*5 H=10.5
2	CN108	088G352E912AXH	USB A TYPE R/A 9P 1*1 BLUE 6.96mm
2	CN104	088G353GFF1ACL	D-SUB CONN 15P BLUE R/A H=10mm
2	CN600	311GW200A04ABL	CONN 2.0mm 4P R/A B2009W04HTK0
2	CN107	311GW200C06ABL	WAFER 2.0mm 6P R/A B2000W06HTKB
2	CN700	311GW200C12BBX	CONN 2.0mm 12P R/A W2010-12RVA-S04
2	CN400	311GW200C14BBX	CONN 2.0mm 14P R/A W2010-14RVA-S04
2	CN401	311GW200C40AAL	WAFER 2.0mm 40P
2	CN103	388G078G13NAYG	RCA R/A 6P 1*3 Y/W/R 9.5mm
2	CN100	388G302F5B1ACL	PHONE JACK R/A 5P 1*1 BLACK 8.5mm
2	CN109	388G342GFB6AGN	RJ45 R/A 15P 1*1 BLACK 11.2
2	CN106	388G352F6B3AXH	USB A TYPE R/A 6P 1*1 BLACK 8.4
2	J100	388G510H401AHC	RF IFP-007 4P 1*1 W --
2	Q85T01	Q85T 583162	GASKET
2	HS600	Q90G6119 6	EAT SINK
2		SMTFEMSDA5	MAIN BOARD FOR SMT
2	X85	X85T806910100000LH	SHIELD_TUNER
2	HS400	X90G070310100000SY	HEAT SINK
1		IRPFFAA9	IR BOARD
2		SMTIRPFFAA9	IR BOARD FOR SMT
1		KEPFEEA9	KEY BOARD
2		SMTKEPFEEA9	KEY BOARD FOR SMT
1		LNTVEW661XXA6	CONVERTER BOARD --
2		Z40G0002ALL01A	OTHER LABEL
2	CN8102	033G380212B YH	wafer 12P 2.0 DIP
2	CN8101	033G380213B YH	AFER 2.0mm 13P
2	C8105	067G515Z271 9K	EC 270UF 20% 100V 10*40 5000 hr
2	C8107	067G515Z271 9K	EC 270UF 20% 100V 10*40 5000 hr
2	C8106	067G515Z271 9K	EC 270UF 20% 100V 10*40 5000 hr
2	C8102	367G415X3317KT	EC 330UF 20% 50V 12.5*12
2	C8101	367G415X3317KT	EC 330UF 20% 50V 12.5*12
2	L8101	373G0253353X00	BOOST CHOKE 33uH 10% 4A 3LCEQ2513-330K
2		705TXD57224	Q8101
2		705TXD93200	D8101
2		LNEW661XXA6SMT	CONVERTER BOARD FOR SMT
2		705TAD84023	F9901
3	EF9901	084G 34 14	bSE -- -- --
3	F9901	084G 41 7 C	FUSE 5A 250V UDA005(PF)

2		705TAD93119	Q9801&Q9802
3	Q9801	057G 667954	MOSFET TK18A60V 18A 600V SC-67
3	D9802	093G 52905	DIODE FMNS-1106S TO-220
3		0M1G1730 8120	SCREW M3 8
3	HS9801	Q90T0236002A0000HG	HEAT SINK
2		705TAD93120	Q9301
3	Q9301	057G 667931	MOSFET AOTF8N65 8A 650V TO-220FP
3		0M1G1730 8120	SCREW M3 8
3	HS9301	Q90G0219 4	HEAT SINK Đ ² Ä/Profile
2		705TAD93121	Q9303
3		0M1G1730 8120	SCREW M3 8
3	Q9303	357G0600100020	MOSFET AOTF298L 33A 100V TO-220F
3	HS9303	Q90T0236001A0000HG	HEAT SINK
2		705TXE93083	D9103&D9104 ASSY
3	D9103	093G 60247	ME-220A
3	D9104	093G 60247	ME-220A
3		0M1G1730 8120	SCREW M3 8
3	HS9103	Q90T0236003A0000HG	HEAT SINK
2		ADE1220XB8SMT	ADAPTER BOARD FOR SMT
3	IC9305	056G 158501	DC/DC AS431ANTR-E1 150mA 40V SOT23-3
3	IC9101	056G 379211	AC/DC SSC9522S-TL SOP-18
3	Q9103	057G 417517	Tra LMBT3906LT1G -200mA/-40V SOT-23 LRC
3	Q9104	057G 417518	TRA LMBT3904LT1G 200mA/40V SOT-23 LRC
3	Q9101	057G 419912 T	RANSISTOR 2SD1624T-TD-E PCP
3	R9148	061G0805000 JF	RST CHIPR 0 OHM +-5% 1/8W FENGHUA
3	R9162	061G0805000 JT	RST 0805 0.05R MAX 1/8W
3	R9802	061G0805100 JF	RST CHIPR 10 OHM +-5% 1/8W FENGHUA
3	R9109	061G0805100 JT	RST CHIP 10R 1/8W 5% TZAI YUAN
3	R9311	061G0805100 JT	RST CHIP 10R 1/8W 5% TZAI YUAN
3	R9133	061G08051001FT	RST CHIP 1K 1/8W 1%
3	R9332	061G08051001FT	RST CHIP 1K 1/8W 1%
3	R9137	061G08051001FT	RST CHIP 1K 1/8W 1%
3	R9156	061G08051002FT	RST CHIP 10K 1/8W 1%
3	R9152	061G08051002FT	RST CHIP 10K 1/8W 1%
3	R9151	061G08051009FT	RST CHIP R 10ohm +/-1% 1/8W
3	R9150	061G08051009FT	RST CHIP R 10ohm +/-1% 1/8W
3	R9810	061G0805102 JF	RST CHIPR 1K OHM +-5% 1/8W FENGHUA
3	R9134	061G0805102 JT	RST CHIPR 1K OHM +- 5% 1/8W TZAI YUAN
3	R9806	061G0805103 JF	RST CHIPR 10K OHM +-5% 1/8W FENGHUA
3	R9813	061G0805103 JF	RST CHIPR 10K OHM +-5% 1/8W FENGHUA
3	R9314	061G0805103 JT	RST 0805 10K 5% 1/8W
3	R9341	061G08051200FT	RST CHIP 120R 1/8W 1%
3	R9103	061G08051600FF	RST 0805 160R 1% 1/8W FENGHUA
3	R9127	061G08051802FT	RST 0805 18K 1% 1/8W
3	R9116	061G08051802FY	RST CHIP 18K 1/8W 1%
3	R9811	061G08051912FT	RST CHIPR 19K1 +-1% 1/8W TZAI YUAN
3	R9128	061G0805202 JF	RST CHIPR 2KOHM +-5% 1/8W FENGHUA
3	R9814	061G0805202 JF	RST CHIPR 2KOHM +-5% 1/8W FENGHUA
3	R9136	061G0805202 JT	RST CHIP 2K 1/8W 5% TZAI YUAN
3	R9122	061G08052101FT	RST CHIPR 2.1KOHM +-1% 1/8W TZAI YUAN

3	R9340	061G08052201FT	CHIP 2K2 1/8W 1%
3	R9312	061G08052209FT	RST 0805 22R 1% 1/8W
3	R9112	061G0805229 JF	RST CHIPR 2R2 +-5% 1/8W FENGHUA
3	R9120	061G0805242 JF	RST CHIPR 2.4KOHM +-5% 1/8W FENGHUA
3	R9163	061G08052431FT	RST CHIP 2K43 1/8W 1%
3	R9118	061G0805302 JY	RST CHIPR 3K +-5% 1/8W YAGEO
3	R9803	061G0805330 JT	RST CHIP 33R 1/8W 5% TZAI YUAN
3	R9812	061G0805363 JF	ST CHIPR 36KOHM +-5% 1/8W FENGHUA
3	R9119	061G08054701FT	RST CHIP 4K7 1/8W 1%
3	R9117	061G0805471 JF	RST CHIPR 470 OHM +-5% 1/8W FENGHUA
3	R9328	061G0805472 JT	RST CHIPR 4K7 +-5% 1/8W TZAI YUAN
3	R9130	061G0805514 JF	ST CHIPR 510KOHM +-5% 1/8W FENGHUA
3	R9149	061G0805820 JY	RST CHIP R 82ohm 1/8W +/-5% YAGEO
3	R9154	061G0805820 JY	RST CHIP R 82ohm 1/8W +/-5% YAGEO
3	R9329	061G08059101FT	RST CHIP 9K1 1/8W 1%
3	JR903	061G1206000 JT	RST CHIPR MAX0R05 1/4W TZAI YUAN
3	JR907	061G1206000 JT	RST CHIPR MAX0R05 1/4W TZAI YUAN
3	JR906	061G1206000 JT	RST CHIPR MAX0R05 1/4W TZAI YUAN
3	JR904	061G1206000 JT	RST CHIPR MAX0R05 1/4W TZAI YUAN
3	JR901	061G1206000 JT	RST CHIPR MAX0R05 1/4W TZAI YUAN
3	JR902	061G1206000 JT	RST CHIPR MAX0R05 1/4W TZAI YUAN
3	JR905	061G1206000 JT	RST CHIPR MAX0R05 1/4W TZAI YUAN
3	R9308	061G1206100 JT	RST CHIPR 10 OHM +-5% 1/4W TZAI YUAN
3	R9804	061G12061004FF E	RST CHIP 1M 1% 1/4W 500V FENGHUA
3	R9809	061G12061004FF E	RST CHIP 1M 1% 1/4W 500V FENGHUA
3	R9807	061G12061004FF E	RST CHIP 1M 1% 1/4W 500V FENGHUA
3	R9131	061G1206101 JF	RST CHIPR 100 OHM +-5% 1/4W FENGHUA
3	R9132	061G1206101 JF	RST CHIPR 100 OHM +-5% 1/4W FENGHUA
3	R9102	061G1206101 JT	RST CHIPR 100 OHM +-5% 1/4W TZAI YUAN
3	R9101	061G1206101 JT	RST CHIPR 100 OHM +-5% 1/4W TZAI YUAN
3	R9129	061G1206102 JF	RST CHIPR 1KOHM +-5% 1/4W FENGHUA
3	R9324	061G1206103 JT	RST CHIPR 10KOHM +-5% 1/4W TZAI YUAN
3	R9138	061G1206104 JT	RST CHIPR 100KOHM +-5% 1/4W TZAI YUAN
3	R9143	061G1206123 JF	RST CHIPR 12KOHM +-5% 1/4W FENGHUA
3	R9141	061G1206123 JF	RST CHIPR 12KOHM +-5% 1/4W FENGHUA
3	R9124	061G1206123 JF	RST CHIPR 12KOHM +-5% 1/4W FENGHUA
3	R9139	061G1206123 JF	RST CHIPR 12KOHM +-5% 1/4W FENGHUA
3	R9142	061G1206123 JF	RST CHIPR 12KOHM +-5% 1/4W FENGHUA
3	R9327	061G12061501FF	RST CHIPR 1.5KOHM +-1% 1/4W FENGHUA
3	R9113	061G12061504FT	RST CHIP 1M5 1/4W 1%
3	R9115	061G12061504FT	RST CHIP 1M5 1/4W 1%
3	R9114	061G12061504FT	RST CHIP 1M5 1/4W 1%
3	R9316	061G1206201 JT	RST CHIPR 200 OHM +-5% 1/4W TZAI YUAN
3	R9315	061G1206201 JT	RST CHIPR 200 OHM +-5% 1/4W TZAI YUAN
3	R9322	061G1206201 JT	RST CHIPR 200 OHM +-5% 1/4W TZAI YUAN
3	R9320	061G1206201 JT	RST CHIPR 200 OHM +-5% 1/4W TZAI YUAN
3	R9323	061G1206201 JT	RST CHIPR 200 OHM +-5% 1/4W TZAI YUAN
3	R9319	061G1206201 JT	RST CHIPR 200 OHM +-5% 1/4W TZAI YUAN
3	R9805	061G1206203 JF	RST CHIPR 20KOHM +-5% 1/4W FENGHUA
3	R9305	061G12062202FT	RST 1206 22K 1% 1/4W TZAI YUAN

3	R9318	061G1206471 JT	ST CHIPR 470 OHM +-5% 1/4W TZAI YUAN
3	R9303	061G1206479 JT	RST 1206 4.7R 5% 1/4W
3	R9309	061G1206479 JT	RST 1206 4.7R 5% 1/4W
3	R9310	061G1206512 JT	RST CHIPR 5.1 KOHM +-5% 1/4W TZAI YUAN
3	R9325	061G1206512 JT	RST CHIPR 5.1 KOHM +-5% 1/4W TZAI YUAN
3	R9905	061G1206514 JF E	RST CHIP 510K 5% 1/4W 500V FENGHUA
3	R9904	061G1206514 JF E	RST CHIP 510K 5% 1/4W 500V FENGHUA
3	R9903	061G1206514 JF E	RST CHIP 510K 5% 1/4W 500V FENGHUA
3	R9902	061G1206514 JF E	RST CHIP 510K 5% 1/4W 500V FENGHUA
3	R9105	061G1206561 JT	RST CHIPR 560 OHM +-5% 1/4W TZAI YUAN
3	C9316	065G080510131J Y	CAP CHIP 0805 100P 50V NP0 +/-5%
3	C9315	065G080510131J Y	CAP CHIP 0805 100P 50V NP0 +/-5%
3	C9322	065G080510232K Y	CAP CHIP 0805 1N 50V X7R +/-10%
3	C9102	065G080510232K Y	CAP CHIP 0805 1N 50V X7R +/-10%
3	C9323	065G080510232K Y	CAP CHIP 0805 1N 50V X7R +/-10%
3	C9101	065G080510232K Y	CAP CHIP 0805 1N 50V X7R +/-10%
3	C9320	065G080510432K F	CAP CHIP 0805 0.1UF K 50V X7R
3	C9113	065G080510432K F	CAP CHIP 0805 0.1UF K 50V X7R
3	C9318	065G080510432K F	CAP CHIP 0805 0.1UF K 50V X7R
3	C9119	065G080510432K Y	CAP CHIP 0805 100N 50V X7R +/-10%
3	C9135	065G080510432K Y	CAP CHIP 0805 100N 50V X7R +/-10%
3	C9806	065G080510432K Y	CAP CHIP 0805 100N 50V X7R +/-10%
3	C9137	065G080510432K Y	CAP CHIP 0805 100N 50V X7R +/-10%
3	C9128	065G080510432K Y	CAP CHIP 0805 100N 50V X7R +/-10%
3	C9123	065G080510432K Y	CAP CHIP 0805 100N 50V X7R +/-10%
3	C9108	065G080510432K Y	CAP CHIP 0805 100N 50V X7R +/-10%
3	C9144	065G080510432K Y	CAP CHIP 0805 100N 50V X7R +/-10%
3	C9314	065G080510432K Y	CAP CHIP 0805 100N 50V X7R +/-10%
3	C9302	065G080510432K Y	CAP CHIP 0805 100N 50V X7R +/-10%
3	C9337	065G080510532K M	CAP 0805 1UF 10% 50V X7R
3	C9141	065G080510532K M	CAP 0805 1UF 10% 50V X7R
3	C9145	065G080510532K M	CAP 0805 1UF 10% 50V X7R
3	C9143	065G080510532K M	CAP 0805 1UF 10% 50V X7R
3	C9312	065G080510532K M	CAP 0805 1UF 10% 50V X7R
3	C9134	065G080510532K M	CAP 0805 1UF 10% 50V X7R
3	C9313	065G080510532K M	CAP 0805 1UF 10% 50V X7R
3	C9807	065G080522131J F	CAP CHIP 0805 220PF J 50V NP0
3	C9109	065G080522131J M	CAP 0805 220PF 5% 50V NP0
3	C9129	065G080522432K T	CAP 0805 220nF 10% 50V X7R UMK212 B7224
3	C9132	065G080522432K T	CAP 0805 220nF 10% 50V X7R UMK212 B7224
3	C9130	065G080522432K T	CAP 0805 220nF 10% 50V X7R UMK212 B7224
3	C9133	065G080522432K T	CAP 0805 220nF 10% 50V X7R UMK212 B7224
3	C9116	065G080522432K T	CAP 0805 220nF 10% 50V X7R UMK212 B7224
3	C9138	065G080522432K T	CAP 0805 220nF 10% 50V X7R UMK212 B7224
3	C9329	065G080522432K Y	CAP CHIP 0805 220N 50V X7R +/-10%
3	C9804	065G080547031J Y	AP CHIP 0805 47P 50V NP0 +/-5%
3	C9106	065G080547031J Y	AP CHIP 0805 47P 50V NP0 +/-5%
3	C9808	065G080547031J Y	AP CHIP 0805 47P 50V NP0 +/-5%
3	C9324	065G080547131J Y	CAP CHIP 0805 470P 50V NP0 +/-5%
3	C9326	065G080547232K A	CAP 0805 4.7NF 10% 50V X7R

3	C9809	065G080547332K Y	CAP CHIP 0805 47N 50V X7R +/-10%
3	C9810	065G080547432K T	CAP CHIP 0805 0.47UF K 50V X7R
3	C9142	065G0805475A2K T	CAP CHIP 0805 4.7uF K 10V X7R
3	C9139	065G080556131J Y	CAP CHIP 0805 560P 50V NP0 +/-5%
3	IC9305	356G01585020HF	Shunt Regu TL431G-AE2-R SOT23-3
3	IC9801	356G0379008218	PFC LD7591T GS SOP-8
3	IC9301	356G0379213	AC/DC SSC2S110 SOP-8
3	IC9302	356GD563008152000Z	DC/DC SP6018S8RGB 1A 16V SOP-8
3	Q9102	357G07630620HF	HF MOSFET 2N7002K_R1_00001 0.3A 60V
3	R9901	361G12069103FT	RST 1206 910K 1% 1/4W RC1206FR-07910KL,
3	R9906	361G12069103FT	RST 1206 910K 1% 1/4W RC1206FR-07910KL,
3	D9109	393G006432S0HF	SWITCHING 1N4148W 0.15A 75V SOD-123
3	ZD9107	393G039S95200T00HF	HF BZT52-B6V2_R1_00001 6.2V 0.41W
3	ZD9106	393G039S95200T00HF	HF BZT52-B6V2_R1_00001 6.2V 0.41W
3	ZD9302	393G039SA1300T	ZENER BZT52-B39_R1_00001 39V 0.41W
3	ZD9301	393G039SA1300T	ZENER BZT52-B39_R1_00001 39V 0.41W
3	ZD9103	393G039SA2900T	ZENER BZT52-B15 15V 0.41 SOD-123
3	ZD9101	393G039SA2900T	ZENER BZT52-B15 15V 0.41 SOD-123
3	ZD9105	393G039SA2900T	ZENER BZT52-B15 15V 0.41 SOD-123
3	D9113	393G060S50000T00HF	HF SS1060FL_R1_00001 1A 60V SOD123FL
3	D9302	393G060S50000T00HF	HF SS1060FL_R1_00001 1A 60V SOD123FL
3	D9110	393G060S50000T00HF	HF SS1060FL_R1_00001 1A 60V SOD123FL
3	D9107	393G060S50000T00HF	HF SS1060FL_R1_00001 1A 60V SOD123FL
3	D9803	393G060S50000T00HF	HF SS1060FL_R1_00001 1A 60V SOD123FL
3	D9304	393G060S50000T00HF	HF SS1060FL_R1_00001 1A 60V SOD123FL
3	D9114	393G060S50000T00HF	HF SS1060FL_R1_00001 1A 60V SOD123FL
3	D9307	393G060SA0700T	SCHOTTKY MB810 8A 100V SMC
3		ADE1220XB8AI	ADAPTER BOARD FOR AI
2		SMTFEMSDA5	MAIN BOARD FOR SMT
3	U105	056G 581 9	IC G5250K1T1U SOT23-5
3	U101	056G 581 9	IC G5250K1T1U SOT23-5
3	U107	056G 585 4A	LDO AP1117E33G-13 1A 3.3V SOT-223
3	U702	056G 585 4A	LDO AP1117E33G-13 1A 3.3V SOT-223
3	U700	056G 585 4A	LDO AP1117E33G-13 1A 3.3V SOT-223
3	U102	056G 616 55	AUDIO DRV602PW 870mW TSSOP-14
3	U402	056G 643 5B	IC G690H293T73Uf SOT-23 GMT
3	U501	056G 665918	IC STMP52171STR SOT23-5L
3	Q705	057G 417511	MMBT3904
3	Q406	057G 417511	MMBT3904
3	Q701	057G 417511	MMBT3904
3	Q703	057G 417511	MMBT3904
3	Q601	057G 417511	MMBT3904
3	Q702	057G 417511	MMBT3904
3	Q600	057G 417512	MMBT3906
3	Q602	057G 417512	MMBT3906
3	Q400	057G 417512	MMBT3906
3	Q405	057G 763 79	FET AO4449 -7A/-30V SOIC-8
3	Q700	057G 763 79	FET AO4449 -7A/-30V SOIC-8
3	RP301	061G 1260008JT	RST NET OR 5% 1/16W
3	RP302	061G 1260008JT	RST NET OR 5% 1/16W

3	FB500	061G0402000 JT	RST 0402 0.05R MAX 1/16W -
3	C142	061G0402000 JT	RST 0402 0.05R MAX 1/16W -
3	C143	061G0402000 JT	RST 0402 0.05R MAX 1/16W -
3	R4219	061G0402000 JT	RST 0402 0.05R MAX 1/16W -
3	C313	061G0402000 JY	RST CHIPR MAX 0R05 OHM 1/16W YAGEO
3	R4103	061G0402000 JY	RST CHIPR MAX 0R05 OHM 1/16W YAGEO
3	R100	061G0402000 JY	RST CHIPR MAX 0R05 OHM 1/16W YAGEO
3	R4105	061G0402000 JY	RST CHIPR MAX 0R05 OHM 1/16W YAGEO
3	R4107	061G0402000 JY	RST CHIPR MAX 0R05 OHM 1/16W YAGEO
3	R117	061G0402000 JY	RST CHIPR MAX 0R05 OHM 1/16W YAGEO
3	R4108	061G0402000 JY	RST CHIPR MAX 0R05 OHM 1/16W YAGEO
3	C308	061G0402000 JY	RST CHIPR MAX 0R05 OHM 1/16W YAGEO
3	R744	061G0402000 JY	RST CHIPR MAX 0R05 OHM 1/16W YAGEO
3	R527	061G0402000 JY	RST CHIPR MAX 0R05 OHM 1/16W YAGEO
3	R4052	061G0402000 JY	RST CHIPR MAX 0R05 OHM 1/16W YAGEO
3	R748	061G0402000 JY	RST CHIPR MAX 0R05 OHM 1/16W YAGEO
3	R4054	061G0402000 JY	RST CHIPR MAX 0R05 OHM 1/16W YAGEO
3	R150	061G0402000 JY	RST CHIPR MAX 0R05 OHM 1/16W YAGEO
3	R171	061G0402000 JY	RST CHIPR MAX 0R05 OHM 1/16W YAGEO
3	C309	061G0402000 JY	RST CHIPR MAX 0R05 OHM 1/16W YAGEO
3	R160	061G0402000 JY	RST CHIPR MAX 0R05 OHM 1/16W YAGEO
3	C310	061G0402000 JY	RST CHIPR MAX 0R05 OHM 1/16W YAGEO
3	R101	061G0402000 JY	RST CHIPR MAX 0R05 OHM 1/16W YAGEO
3	R623	061G0402000 JY	RST CHIPR MAX 0R05 OHM 1/16W YAGEO
3	R717	061G0402000 JY	RST CHIPR MAX 0R05 OHM 1/16W YAGEO
3	R4110	061G0402000 JY	RST CHIPR MAX 0R05 OHM 1/16W YAGEO
3	R631	061G0402000 JY	RST CHIPR MAX 0R05 OHM 1/16W YAGEO
3	C311	061G0402000 JY	RST CHIPR MAX 0R05 OHM 1/16W YAGEO
3	R626	061G0402000 JY	RST CHIPR MAX 0R05 OHM 1/16W YAGEO
3	C306	061G0402000 JY	RST CHIPR MAX 0R05 OHM 1/16W YAGEO
3	R729	061G0402000 JY	RST CHIPR MAX 0R05 OHM 1/16W YAGEO
3	R4111	061G0402000 JY	RST CHIPR MAX 0R05 OHM 1/16W YAGEO
3	R616	061G0402000 JY	RST CHIPR MAX 0R05 OHM 1/16W YAGEO
3	R4104	061G0402000 JY	RST CHIPR MAX 0R05 OHM 1/16W YAGEO
3	R123	061G0402000 JY	RST CHIPR MAX 0R05 OHM 1/16W YAGEO
3	R734	061G0402000 JY	RST CHIPR MAX 0R05 OHM 1/16W YAGEO
3	C312	061G0402000 JY	RST CHIPR MAX 0R05 OHM 1/16W YAGEO
3	R4106	061G0402000 JY	RST CHIPR MAX 0R05 OHM 1/16W YAGEO
3	R174	061G0402000 JY	RST CHIPR MAX 0R05 OHM 1/16W YAGEO
3	C307	061G0402000 JY	RST CHIPR MAX 0R05 OHM 1/16W YAGEO
3	R4109	061G0402000 JY	RST CHIPR MAX 0R05 OHM 1/16W YAGEO
3	R4102	061G0402000 JY	RST CHIPR MAX 0R05 OHM 1/16W YAGEO
3	R522	061G0402100 JY	RST CHIPR 10 OHM +-5% 1/16W YAGEO
3	R161	061G0402100 JY	RST CHIPR 10 OHM +-5% 1/16W YAGEO
3	R4036	061G0402100 JY	RST CHIPR 10 OHM +-5% 1/16W YAGEO
3	R4035	061G0402100 JY	RST CHIPR 10 OHM +-5% 1/16W YAGEO
3	R162	061G0402100 JY	RST CHIPR 10 OHM +-5% 1/16W YAGEO
3	R4037	061G04021000FY	RST CHIP 100R 1/16W 1%
3	R152	061G04021000FY	RST CHIP 100R 1/16W 1%
3	R720	061G04021000FY	RST CHIP 100R 1/16W 1%

3	R119	061G04021000FY	RST CHIP 100R 1/16W 1%
3	R4044	061G04021000FY	RST CHIP 100R 1/16W 1%
3	R124	061G04021000FY	RST CHIP 100R 1/16W 1%
3	R502	061G04021000FY	RST CHIP 100R 1/16W 1%
3	R118	061G04021000FY	RST CHIP 100R 1/16W 1%
3	R719	061G04021000FY	RST CHIP 100R 1/16W 1%
3	R4043	061G04021000FY	RST CHIP 100R 1/16W 1%
3	R120	061G04021000FY	RST CHIP 100R 1/16W 1%
3	R618	061G04021001FY	RST CHIP 1K 1/16W 1%
3	R507	061G04021001FY	RST CHIP 1K 1/16W 1%
3	R4027	061G04021001FY	RST CHIP 1K 1/16W 1%
3	R4026	061G04021001FY	RST CHIP 1K 1/16W 1%
3	R4025	061G04021001FY	RST CHIP 1K 1/16W 1%
3	R4051	061G04021001FY	RST CHIP 1K 1/16W 1%
3	R4028	061G04021001FY	RST CHIP 1K 1/16W 1%
3	R773	061G04021001FY	RST CHIP 1K 1/16W 1%
3	R4015	061G04021002FY	RST CHIP 10K 1/16W 1% YAGEO
3	R106	061G04021002FY	RST CHIP 10K 1/16W 1% YAGEO
3	R115	061G04021002FY	RST CHIP 10K 1/16W 1% YAGEO
3	R4093	061G04021002FY	RST CHIP 10K 1/16W 1% YAGEO
3	R634	061G04021002FY	RST CHIP 10K 1/16W 1% YAGEO
3	R4094	061G04021002FY	RST CHIP 10K 1/16W 1% YAGEO
3	R4096	061G04021002FY	RST CHIP 10K 1/16W 1% YAGEO
3	R632	061G04021002FY	RST CHIP 10K 1/16W 1% YAGEO
3	R633	061G04021002FY	RST CHIP 10K 1/16W 1% YAGEO
3	R4100	061G04021002FY	RST CHIP 10K 1/16W 1% YAGEO
3	R4020	061G04021002FY	RST CHIP 10K 1/16W 1% YAGEO
3	R621	061G04021002FY	RST CHIP 10K 1/16W 1% YAGEO
3	R4099	061G04021002FY	RST CHIP 10K 1/16W 1% YAGEO
3	R776	061G04021002FY	RST CHIP 10K 1/16W 1% YAGEO
3	R4000	061G04021002FY	RST CHIP 10K 1/16W 1% YAGEO
3	R4092	061G04021002FY	RST CHIP 10K 1/16W 1% YAGEO
3	R750	061G04021002FY	RST CHIP 10K 1/16W 1% YAGEO
3	R112	061G04021002FY	RST CHIP 10K 1/16W 1% YAGEO
3	R4042	061G04021002FY	RST CHIP 10K 1/16W 1% YAGEO
3	R4098	061G04021002FY	RST CHIP 10K 1/16W 1% YAGEO
3	R107	061G04021002FY	RST CHIP 10K 1/16W 1% YAGEO
3	R704	061G04021002FY	RST CHIP 10K 1/16W 1% YAGEO
3	R4019	061G04021002FY	RST CHIP 10K 1/16W 1% YAGEO
3	R624	061G04021002FY	RST CHIP 10K 1/16W 1% YAGEO
3	R4014	061G04021002FY	RST CHIP 10K 1/16W 1% YAGEO
3	R525	061G04021002FY	RST CHIP 10K 1/16W 1% YAGEO
3	R4095	061G04021002FY	RST CHIP 10K 1/16W 1% YAGEO
3	R4097	061G04021002FY	RST CHIP 10K 1/16W 1% YAGEO
3	R111	061G04021002FY	RST CHIP 10K 1/16W 1% YAGEO
3	R116	061G04021002FY	RST CHIP 10K 1/16W 1% YAGEO
3	R4065	061G04021003FY	RST CHIP 100K 1/16W 1%
3	R625	061G04021003FY	RST CHIP 100K 1/16W 1%
3	R164	061G04021003FY	RST CHIP 100K 1/16W 1%
3	R165	061G04021003FY	RST CHIP 100K 1/16W 1%

3	R4055	061G04021003FY	RST CHIP 100K 1/16W 1%
3	R166	061G04021003FY	RST CHIP 100K 1/16W 1%
3	R4039	061G04021003FY	RST CHIP 100K 1/16W 1%
3	R163	061G04021003FY	RST CHIP 100K 1/16W 1%
3	R4046	061G04021004FT	RST CHIPR 1M +-1% 1/16W TZAI YUAN
3	R148	061G04021004FT	RST CHIPR 1M +-1% 1/16W TZAI YUAN
3	R4061	061G04021004FT	RST CHIPR 1M +-1% 1/16W TZAI YUAN
3	R770	061G0402103 JF	RST CHIPR 10KOHM +-5% 1/16W FENGHUA
3	R134	061G0402103 JY	RST CHIPR 10KOHM +-5% 1/16W YAGEO
3	R108	061G0402123 JY	RST CHIPR 12KOHM £«-5£¥ 1/16W YAGEO
3	R114	061G0402123 JY	RST CHIPR 12KOHM £«-5£¥ 1/16W YAGEO
3	R109	061G0402123 JY	RST CHIPR 12KOHM £«-5£¥ 1/16W YAGEO
3	R113	061G0402123 JY	RST CHIPR 12KOHM £«-5£¥ 1/16W YAGEO
3	R772	061G04021243FY	RST CHIP 124K 1/16W 1%
3	R761	061G04021243FY	RST CHIP 124K 1/16W 1%
3	R4133	061G0402152 JY	RST CHIPR 1.5KOHM +-5% 1/16W YAGEO
3	R4060	061G0402220 JY	RST CHIPR 22 OHM +-5% 1/16W YAGEO
3	R611	061G0402220 JY	RST CHIPR 22 OHM +-5% 1/16W YAGEO
3	R766	061G0402220 JY	RST CHIPR 22 OHM +-5% 1/16W YAGEO
3	R4101	061G0402220 JY	RST CHIPR 22 OHM +-5% 1/16W YAGEO
3	R145	061G0402220 JY	RST CHIPR 22 OHM +-5% 1/16W YAGEO
3	R610	061G0402220 JY	RST CHIPR 22 OHM +-5% 1/16W YAGEO
3	R131	061G0402220 JY	RST CHIPR 22 OHM +-5% 1/16W YAGEO
3	R763	061G04022202FT	RST CHIP 22K 1/16W 1% TZAI YUAN
3	R735	061G04022202FT	RST CHIP 22K 1/16W 1% TZAI YUAN
3	R774	061G04022212FF	RST 0402 22.1K 1% 1/16W FENGHUA
3	R739	061G0402222 JY	RST 0402 2.2K 5% 1/16W RC0402JR-072K2L
3	R4132	061G0402222 JY	RST 0402 2.2K 5% 1/16W RC0402JR-072K2L
3	R126	061G0402222 JY	RST 0402 2.2K 5% 1/16W RC0402JR-072K2L
3	R725	061G0402222 JY	RST 0402 2.2K 5% 1/16W RC0402JR-072K2L
3	R127	061G0402222 JY	RST 0402 2.2K 5% 1/16W RC0402JR-072K2L
3	R740	061G0402222 JY	RST 0402 2.2K 5% 1/16W RC0402JR-072K2L
3	R4024	061G04022400FY	RST CHIPR 0402 240 OHM +-1% 1/16W YAGEO
3	R4023	061G04022400FY	RST CHIPR 0402 240 OHM +-1% 1/16W YAGEO
3	R620	061G04022400FY	RST CHIPR 0402 240 OHM +-1% 1/16W YAGEO
3	R504	061G0402304 JT	RST 0402 300K 5% 1/16W TZAI YUAN
3	R4009	061G0402330 JY	RST CHIPR 33 OHM £«-5£¥ 1/16W YAGEO
3	R4011	061G0402330 JY	RST CHIPR 33 OHM £«-5£¥ 1/16W YAGEO
3	R701	061G0402330 JY	RST CHIPR 33 OHM £«-5£¥ 1/16W YAGEO
3	R514	061G0402330 JY	RST CHIPR 33 OHM £«-5£¥ 1/16W YAGEO
3	R746	061G0402330 JY	RST CHIPR 33 OHM £«-5£¥ 1/16W YAGEO
3	R516	061G0402330 JY	RST CHIPR 33 OHM £«-5£¥ 1/16W YAGEO
3	R520	061G0402330 JY	RST CHIPR 33 OHM £«-5£¥ 1/16W YAGEO
3	R4021	061G0402330 JY	RST CHIPR 33 OHM £«-5£¥ 1/16W YAGEO
3	R4018	061G0402330 JY	RST CHIPR 33 OHM £«-5£¥ 1/16W YAGEO
3	R4013	061G0402330 JY	RST CHIPR 33 OHM £«-5£¥ 1/16W YAGEO
3	R4007	061G0402330 JY	RST CHIPR 33 OHM £«-5£¥ 1/16W YAGEO
3	R4006	061G0402330 JY	RST CHIPR 33 OHM £«-5£¥ 1/16W YAGEO
3	R702	061G0402330 JY	RST CHIPR 33 OHM £«-5£¥ 1/16W YAGEO
3	R700	061G0402330 JY	RST CHIPR 33 OHM £«-5£¥ 1/16W YAGEO

3	R4010	061G0402330 JY	RST CHIPR 33 OHM $\pm 5\%$ 1/16W YAGEO
3	R760	061G04023301FF	RST CHIP 3K3 1/16W 1% FENGHUA
3	R731	061G04023302FF	RST 0402 33K 1% 1/16W FENGHUA
3	R4034	061G0402332 JF	RST CHIPR 3.3KOHM 5% 1/16W FENGHUA
3	R724	061G0402332 JY	RST CHIPR 3.3KOHM 5% 1/16W YAGEO
3	R153	061G0402391 JT	RST CHIP 390R 1/16W 5% TZAI YUAN
3	R154	061G0402391 JT	RST CHIP 390R 1/16W 5% TZAI YUAN
3	R168	061G0402393 JY	RST CHIP 39K 1/16W 5% YAGEO
3	R526	061G0402393 JY	RST CHIP 39K 1/16W 5% YAGEO
3	R167	061G0402393 JY	RST CHIP 39K 1/16W 5% YAGEO
3	R722	061G04024702FF	RST CHIPR 0402 47K $\pm 1\%$ 1/16W FENGHUA
3	R510	061G04024702FF	RST CHIPR 0402 47K $\pm 1\%$ 1/16W FENGHUA
3	R509	061G04024702FF	RST CHIPR 0402 47K $\pm 1\%$ 1/16W FENGHUA
3	R4078	061G0402472 JY	RST 0402 4.7K 5% 1/16W RC0402JR-074K7L
3	R4073	061G0402472 JY	RST 0402 4.7K 5% 1/16W RC0402JR-074K7L
3	R4016	061G0402472 JY	RST 0402 4.7K 5% 1/16W RC0402JR-074K7L
3	R4002	061G0402472 JY	RST 0402 4.7K 5% 1/16W RC0402JR-074K7L
3	R4090	061G0402472 JY	RST 0402 4.7K 5% 1/16W RC0402JR-074K7L
3	R716	061G0402472 JY	RST 0402 4.7K 5% 1/16W RC0402JR-074K7L
3	R749	061G0402472 JY	RST 0402 4.7K 5% 1/16W RC0402JR-074K7L
3	R4017	061G0402472 JY	RST 0402 4.7K 5% 1/16W RC0402JR-074K7L
3	R4068	061G0402472 JY	RST 0402 4.7K 5% 1/16W RC0402JR-074K7L
3	R4059	061G0402472 JY	RST 0402 4.7K 5% 1/16W RC0402JR-074K7L
3	R4003	061G0402472 JY	RST 0402 4.7K 5% 1/16W RC0402JR-074K7L
3	R4091	061G0402472 JY	RST 0402 4.7K 5% 1/16W RC0402JR-074K7L
3	R4005	061G0402472 JY	RST 0402 4.7K 5% 1/16W RC0402JR-074K7L
3	R726	061G0402472 JY	RST 0402 4.7K 5% 1/16W RC0402JR-074K7L
3	R727	061G0402472 JY	RST 0402 4.7K 5% 1/16W RC0402JR-074K7L
3	R4001	061G0402472 JY	RST 0402 4.7K 5% 1/16W RC0402JR-074K7L
3	R4004	061G0402472 JY	RST 0402 4.7K 5% 1/16W RC0402JR-074K7L
3	R775	061G04025101FT	RST CHIP 5.1K 1/16W 1% TZAI YUAN
3	R721	061G04026201FY	RST CHIP 6.2K 1/16W 1%
3	R169	061G0402623 JY	RST CHIP R 62K 1/16W $\pm 5\%$ YAGEO
3	R170	061G0402623 JY	RST CHIP R 62K 1/16W $\pm 5\%$ YAGEO
3	R4008	061G0402680 JY	RST CHIPR 68 OHM $\pm 5\%$ 1/16W YAGEO
3	R4012	061G0402680 JY	RST CHIPR 68 OHM $\pm 5\%$ 1/16W YAGEO
3	R4022	061G0402680 JY	RST CHIPR 68 OHM $\pm 5\%$ 1/16W YAGEO
3	R105	061G04027509FY	RST CHIP 75R 1/16W 1%
3	R125	061G04027509FY	RST CHIP 75R 1/16W 1%
3	R121	061G04027509FY	RST CHIP 75R 1/16W 1%
3	R102	061G04027509FY	RST CHIP 75R 1/16W 1%
3	R104	061G04027509FY	RST CHIP 75R 1/16W 1%
3	R122	061G04027509FY	RST CHIP 75R 1/16W 1%
3	R103	061G04027509FY	RST CHIP 75R 1/16W 1%
3	R110	061G04027509FY	RST CHIP 75R 1/16W 1%
3	R706	061G04029101FF	RST CHIP 9K1 1/16W 1% FENGHUA
3	R707	061G0603000 JY	RST CHIPR MAX0R05 1/10W YAGEO
3	R4088	061G0603000 JY	RST CHIPR MAX0R05 1/10W YAGEO
3	R4218	061G0603000 JY	RST CHIPR MAX0R05 1/10W YAGEO
3	R607	061G0603000 JY	RST CHIPR MAX0R05 1/10W YAGEO

3	R606	061G0603000 JY	RST CHIPR MAX0R05 1/10W YAGEO
3	R712	061G0603000 JY	RST CHIPR MAX0R05 1/10W YAGEO
3	R635	061G0603102 JY	RST CHIPR 1KOHM +-5% 1/10W YAGEO
3	R723	061G0603102 JY	RST CHIPR 1KOHM +-5% 1/10W YAGEO
3	R4029	061G06031501FF	RST CHIPR 1.5K OHM +-1% 1/10W FENGHUA
3	R619	061G06031502FY	RST CHIP 15K 1/10W 1%
3	R713	061G0603154 JY	RST CHIPR 150K +-5% 1/10W YAGEO
3	R4089	061G0603154 JY	RST CHIPR 150K +-5% 1/10W YAGEO
3	R710	061G06031802FY	RST CHIPR 18 KOHM +-1% 1/10W YAGEO
3	R523	061G0603201 JY	RST CHIPR 200 OHM +-5% 1/10W YAGEO
3	R4030	061G06033301FY	RST CHIP 3K3 1/10W 1%
3	R4031	061G06033301FY	RST CHIP 3K3 1/10W 1%
3	R4080	061G0603473 JY	RST CHIPR 47KOHM 1/10W YAGEO
3	R711	061G0603473 JY	RST CHIPR 47KOHM 1/10W YAGEO
3	FB105	061G0805000 JY	RST CHIPR MAX 0R05 OHM 1/8W YAGEO
3	R147	061G1206000 JY	RST CHIPR MAX0R05 1/4W YAGEO
3	R602	061G1206100 JY	RST CHIPR 10 OHM +-5% 1/4W YAGEO
3	R614	061G1206100 JY	RST CHIPR 10 OHM +-5% 1/4W YAGEO
3	R615	061G1206100 JY	RST CHIPR 10 OHM +-5% 1/4W YAGEO
3	R603	061G1206100 JY	RST CHIPR 10 OHM +-5% 1/4W YAGEO
3	R613	061G1206100 JY	RST CHIPR 10 OHM +-5% 1/4W YAGEO
3	R601	061G1206100 JY	RST CHIPR 10 OHM +-5% 1/4W YAGEO
3	R612	061G1206100 JY	RST CHIPR 10 OHM +-5% 1/4W YAGEO
3	R604	061G1206100 JY	RST CHIPR 10 OHM +-5% 1/4W YAGEO
3	R600	061G1206103 JT	RST CHIPR 10KOHM +-5% 1/4W TZAI YUAN
3	C4078	065G040210131J Y	CAP CHIP 0402 100P 50V NP0 +/-5%
3	C4130	065G040210232K F	CAP 0402 1NF 10% 50V X7R
3	C128	065G040210232K F	CAP 0402 1NF 10% 50V X7R
3	C4131	065G040210232K F	CAP 0402 1NF 10% 50V X7R
3	C133	065G040210232K F	CAP 0402 1NF 10% 50V X7R
3	C4090	065G040210232K Y	CAP 0402 1NF 10% 50V X7R CC0402KRX7R9BB
3	C702	065G040210232K Y	CAP 0402 1NF 10% 50V X7R CC0402KRX7R9BB
3	C131	065G040210232K Y	CAP 0402 1NF 10% 50V X7R CC0402KRX7R9BB
3	C4074	065G040210232K Y	CAP 0402 1NF 10% 50V X7R CC0402KRX7R9BB
3	C719	065G040210232K Y	CAP 0402 1NF 10% 50V X7R CC0402KRX7R9BB
3	C615	065G040210332K F	CAP 0402 10NF 10% 50V X7R
3	C630	065G040210332K F	CAP 0402 10NF 10% 50V X7R
3	C624	065G040210332K F	CAP 0402 10NF 10% 50V X7R
3	C609	065G040210332K F	CAP 0402 10NF 10% 50V X7R
3	C127	065G040210332K F	CAP 0402 10NF 10% 50V X7R
3	C763	065G040210332K F	CAP 0402 10NF 10% 50V X7R
3	C721	065G040210332K Y	CAP CHIP 0402 10N 50V X7R +/-10%
3	C783	065G040210332K Y	CAP CHIP 0402 10N 50V X7R +/-10%
3	C762	065G040210412K Y	CAP 0402 100NF 10% 16V X7R
3	C761	065G040210412K Y	CAP 0402 100NF 10% 16V X7R
3	C129	065G040210412K Y	CAP 0402 100NF 10% 16V X7R
3	C4097	065G040210425K Y	CAP 0402 100nF 10% 25V X5R
3	C741	065G040210425K Y	CAP 0402 100nF 10% 25V X5R
3	C4014	065G040210425K Y	CAP 0402 100nF 10% 25V X5R
3	C119	065G040210425K Y	CAP 0402 100nF 10% 25V X5R

3	C780	065G040210425K Y	CAP 0402 100nF 10% 25V X5R
3	C4037	065G040210425K Y	CAP 0402 100nF 10% 25V X5R
3	C726	065G040210425K Y	CAP 0402 100nF 10% 25V X5R
3	C709	065G040210425K Y	CAP 0402 100nF 10% 25V X5R
3	C4117	065G040210425K Y	CAP 0402 100nF 10% 25V X5R
3	C4021	065G040210425K Y	CAP 0402 100nF 10% 25V X5R
3	C749	065G040210425K Y	CAP 0402 100nF 10% 25V X5R
3	C703	065G040210425K Y	CAP 0402 100nF 10% 25V X5R
3	C4070	065G040210425K Y	CAP 0402 100nF 10% 25V X5R
3	C4022	065G040210425K Y	CAP 0402 100nF 10% 25V X5R
3	C729	065G040210425K Y	CAP 0402 100nF 10% 25V X5R
3	C4124	065G040210425K Y	CAP 0402 100nF 10% 25V X5R
3	C4093	065G040210425K Y	CAP 0402 100nF 10% 25V X5R
3	C121	065G040210425K Y	CAP 0402 100nF 10% 25V X5R
3	C4084	065G040210425K Y	CAP 0402 100nF 10% 25V X5R
3	C4030	065G040210425K Y	CAP 0402 100nF 10% 25V X5R
3	C4033	065G040210425K Y	CAP 0402 100nF 10% 25V X5R
3	C4086	065G040210425K Y	CAP 0402 100nF 10% 25V X5R
3	C4032	065G040210425K Y	CAP 0402 100nF 10% 25V X5R
3	C4094	065G040210425K Y	CAP 0402 100nF 10% 25V X5R
3	C125	065G040210425K Y	CAP 0402 100nF 10% 25V X5R
3	C4031	065G040210425K Y	CAP 0402 100nF 10% 25V X5R
3	C4122	065G040210425K Y	CAP 0402 100nF 10% 25V X5R
3	C145	065G040210425K Y	CAP 0402 100nF 10% 25V X5R
3	C4024	065G040210425K Y	CAP 0402 100nF 10% 25V X5R
3	C760	065G040210425K Y	CAP 0402 100nF 10% 25V X5R
3	C141	065G040210425K Y	CAP 0402 100nF 10% 25V X5R
3	C4073	065G040210425K Y	CAP 0402 100nF 10% 25V X5R
3	C4098	065G040210425K Y	CAP 0402 100nF 10% 25V X5R
3	C4036	065G040210425K Y	CAP 0402 100nF 10% 25V X5R
3	C150	065G040210425K Y	CAP 0402 100nF 10% 25V X5R
3	C727	065G040210425K Y	CAP 0402 100nF 10% 25V X5R
3	C4009	065G040210425K Y	CAP 0402 100nF 10% 25V X5R
3	C4106	065G040210425K Y	CAP 0402 100nF 10% 25V X5R
3	C4072	065G040210425K Y	CAP 0402 100nF 10% 25V X5R
3	C115	065G040210425K Y	CAP 0402 100nF 10% 25V X5R
3	C4035	065G040210425K Y	CAP 0402 100nF 10% 25V X5R
3	C4046	065G040210425K Y	CAP 0402 100nF 10% 25V X5R
3	C136	065G040210425K Y	CAP 0402 100nF 10% 25V X5R
3	C4016	065G040210425K Y	CAP 0402 100nF 10% 25V X5R
3	C4026	065G040210425K Y	CAP 0402 100nF 10% 25V X5R
3	C4000	065G040210425K Y	CAP 0402 100nF 10% 25V X5R
3	C782	065G040210425K Y	CAP 0402 100nF 10% 25V X5R
3	C781	065G040210425K Y	CAP 0402 100nF 10% 25V X5R
3	C733	065G040210425K Y	CAP 0402 100nF 10% 25V X5R
3	C4003	065G040210425K Y	CAP 0402 100nF 10% 25V X5R
3	C4007	065G040210425K Y	CAP 0402 100nF 10% 25V X5R
3	C752	065G040210425K Y	CAP 0402 100nF 10% 25V X5R
3	C4123	065G040210425K Y	CAP 0402 100nF 10% 25V X5R
3	C4023	065G040210425K Y	CAP 0402 100nF 10% 25V X5R

3	C4091	065G040210425K Y	CAP 0402 100nF 10% 25V X5R
3	C4089	065G040210425K Y	CAP 0402 100nF 10% 25V X5R
3	C742	065G040210425K Y	CAP 0402 100nF 10% 25V X5R
3	C4027	065G040210425K Y	CAP 0402 100nF 10% 25V X5R
3	C4025	065G040210425K Y	CAP 0402 100nF 10% 25V X5R
3	C140	065G040210425K Y	CAP 0402 100nF 10% 25V X5R
3	C732	065G040210425K Y	CAP 0402 100nF 10% 25V X5R
3	C4039	065G040210425K Y	CAP 0402 100nF 10% 25V X5R
3	C4085	065G040210425K Y	CAP 0402 100nF 10% 25V X5R
3	C4081	065G040210425K Y	CAP 0402 100nF 10% 25V X5R
3	C745	065G040210425K Y	CAP 0402 100nF 10% 25V X5R
3	C4065	065G040210425K Y	CAP 0402 100nF 10% 25V X5R
3	C120	065G040210425K Y	CAP 0402 100nF 10% 25V X5R
3	C122	065G040210425K Y	CAP 0402 100nF 10% 25V X5R
3	C144	065G040210425K Y	CAP 0402 100nF 10% 25V X5R
3	C4045	065G040210425K Y	CAP 0402 100nF 10% 25V X5R
3	C4092	065G040210425K Y	CAP 0402 100nF 10% 25V X5R
3	C716	065G040210425K Y	CAP 0402 100nF 10% 25V X5R
3	C4062	065G040210425K Y	CAP 0402 100nF 10% 25V X5R
3	C708	065G040210425K Y	CAP 0402 100nF 10% 25V X5R
3	C705	065G040210425K Y	CAP 0402 100nF 10% 25V X5R
3	C118	065G040210425K Y	CAP 0402 100nF 10% 25V X5R
3	C4010	065G040210425K Y	CAP 0402 100nF 10% 25V X5R
3	C4008	065G040210425K Y	CAP 0402 100nF 10% 25V X5R
3	C4047	065G040210425K Y	CAP 0402 100nF 10% 25V X5R
3	C4038	065G040210425K Y	CAP 0402 100nF 10% 25V X5R
3	C4002	065G040210425K Y	CAP 0402 100nF 10% 25V X5R
3	C149	065G040210425K Y	CAP 0402 100nF 10% 25V X5R
3	C4015	065G040210425K Y	CAP 0402 100nF 10% 25V X5R
3	C4080	065G040210425K Y	CAP 0402 100nF 10% 25V X5R
3	C4001	065G0402105A5K T	CAP 0402 1uF 10% 10V X5R LMK105 BJ105KV
3	C4018	065G0402105A5K T	CAP 0402 1uF 10% 10V X5R LMK105 BJ105KV
3	C4118	065G0402105A5K T	CAP 0402 1uF 10% 10V X5R LMK105 BJ105KV
3	C4107	065G040218031J T	CAP CHIP 0402 18PF 50V J NPO
3	C4108	065G040218031J T	CAP CHIP 0402 18PF 50V J NPO
3	C768	065G040222031J Y	CAP CHIP 0402 22P 50V NPO +/-5%
3	C747	065G040222031J Y	CAP CHIP 0402 22P 50V NPO +/-5%
3	C788	065G040222031J Y	CAP CHIP 0402 22P 50V NPO +/-5%
3	C139	065G040222232K F	CAP 0402 2.2NF K 50V X7R
3	C151	065G040222232K F	CAP 0402 2.2NF K 50V X7R
3	C4017	065G040222322K Y	CAP 0402 22NF 10% 25V X7R
3	C147	065G040233031J Y	CAP CHIP 0402 33P 50V NPO +/-5%
3	C148	065G040233031J Y	CAP CHIP 0402 33P 50V NPO +/-5%
3	C734	065G040233031J Y	CAP CHIP 0402 33P 50V NPO +/-5%
3	C4069	065G040233031J Y	CAP CHIP 0402 33P 50V NPO +/-5%
3	C154	065G040247031J F	CAP 0402 47PF 5% 50V NPO
3	C146	065G040247031J F	CAP 0402 47PF 5% 50V NPO
3	C623	065G040247131J Y	0402 470pF J 50V NPO
3	C631	065G040247131J Y	0402 470pF J 50V NPO
3	C602	065G040247131J Y	0402 470pF J 50V NPO

3	C616	065G040247131J Y	0402 470pF J 50V NPO
3	C500	065G040247312K Y	CAP 0402 47NF 10% 16V X7R
3	C4048	065G040247312K Y	CAP 0402 47NF 10% 16V X7R
3	C4058	065G040247312K Y	CAP 0402 47NF 10% 16V X7R
3	C4040	065G040247312K Y	CAP 0402 47NF 10% 16V X7R
3	C4042	065G040247312K Y	CAP 0402 47NF 10% 16V X7R
3	C4060	065G040247312K Y	CAP 0402 47NF 10% 16V X7R
3	C4066	065G040247312K Y	CAP 0402 47NF 10% 16V X7R
3	C4063	065G040247312K Y	CAP 0402 47NF 10% 16V X7R
3	C4050	065G040247312K Y	CAP 0402 47NF 10% 16V X7R
3	C152	065G040247312K Y	CAP 0402 47NF 10% 16V X7R
3	C4061	065G040247312K Y	CAP 0402 47NF 10% 16V X7R
3	C4059	065G040247312K Y	CAP 0402 47NF 10% 16V X7R
3	C4064	065G040247312K Y	CAP 0402 47NF 10% 16V X7R
3	C126	065G0402474A5K F	CAP 0402 470NF 10% 10V X5R
3	C111	065G040256132K Y	CAP 0402 560pF 50V X7R +/-10%
3	C105	065G040256132K Y	CAP 0402 560pF 50V X7R +/-10%
3	C110	065G040256132K Y	CAP 0402 560pF 50V X7R +/-10%
3	C106	065G040256132K Y	CAP 0402 560pF 50V X7R +/-10%
3	C718	065G060310432K Y	CAP 0603 100NF 10% 50V X7R
3	C601	065G060310432K Y	CAP 0603 100NF 10% 50V X7R
3	C617	065G060310432K Y	CAP 0603 100NF 10% 50V X7R
3	C613	065G060310432K Y	CAP 0603 100NF 10% 50V X7R
3	C605	065G060310432K Y	CAP 0603 100NF 10% 50V X7R
3	C701	065G060310432K Y	CAP 0603 100NF 10% 50V X7R
3	C604	065G060310432K Y	CAP 0603 100NF 10% 50V X7R
3	C621	065G060310432K Y	CAP 0603 100NF 10% 50V X7R
3	C603	065G060310432K Y	CAP 0603 100NF 10% 50V X7R
3	C4113	065G060310432K Y	CAP 0603 100NF 10% 50V X7R
3	C619	065G060310432K Y	CAP 0603 100NF 10% 50V X7R
3	C622	065G060310432K Y	CAP 0603 100NF 10% 50V X7R
3	C503	065G060310432K Y	CAP 0603 100NF 10% 50V X7R
3	C606	065G060310432K Y	CAP 0603 100NF 10% 50V X7R
3	C632	065G060310432K Y	CAP 0603 100NF 10% 50V X7R
3	C165	065G060310512K A	CAP 0603 1UF 10% 16V X7R
3	C109	065G060310512K A	CAP 0603 1UF 10% 16V X7R
3	C103	065G060310512K A	CAP 0603 1UF 10% 16V X7R
3	C767	065G060310512K A	CAP 0603 1UF 10% 16V X7R
3	C164	065G060310512K A	CAP 0603 1UF 10% 16V X7R
3	C104	065G060310512K A	CAP 0603 1UF 10% 16V X7R
3	C504	065G060310512K A	CAP 0603 1UF 10% 16V X7R
3	C720	065G060310512K A	CAP 0603 1UF 10% 16V X7R
3	C163	065G060310512K A	CAP 0603 1UF 10% 16V X7R
3	C787	065G060310512K A	CAP 0603 1UF 10% 16V X7R
3	C707	065G060310512K A	CAP 0603 1UF 10% 16V X7R
3	C166	065G060310512K A	CAP 0603 1UF 10% 16V X7R
3	C786	065G060310512K A	CAP 0603 1UF 10% 16V X7R
3	C108	065G060310512K A	CAP 0603 1UF 10% 16V X7R
3	C743	065G060310522K M	CAP MLCC 0603 1uF K 25V X7R
3	C4006	065G060310605M A	MLCC 0603 10UF 6.3V X5R +-20%

3	C4020	065G060310605M A	MLCC 0603 10UF 6.3V X5R +-20%
3	C4071	065G060310605M A	MLCC 0603 10UF 6.3V X5R +-20%
3	C4019	065G060310605M A	MLCC 0603 10UF 6.3V X5R +-20%
3	C4120	065G060310605M A	MLCC 0603 10UF 6.3V X5R +-20%
3	C4005	065G060310605M A	MLCC 0603 10UF 6.3V X5R +-20%
3	C730	065G060322422K Y	CAP 0603 220N 25V X7R 10%
3	C4112	065G060322422K Y	CAP 0603 220N 25V X7R 10%
3	C4116	065G060322515K A	0603 2.2UF K 16V X5R
3	C4043	065G060322515K A	0603 2.2UF K 16V X5R
3	C4121	065G060322515K A	0603 2.2UF K 16V X5R
3	C4049	065G060322515K A	0603 2.2UF K 16V X5R
3	C4041	065G060322515K A	0603 2.2UF K 16V X5R
3	C4051	065G060322515K A	0603 2.2UF K 16V X5R
3	C634	065G060347412K Y	CAP CHIP 0.47uF 16V +/-10% X7R
3	C611	065G080510432K Y	CAP CHIP 0805 100N 50V X7R +/-10%
3	C628	065G080510432K Y	CAP CHIP 0805 100N 50V X7R +/-10%
3	C153	065G080510615K T	CHIP 10uF 16V X5R 0805
3	C746	065G080510615K T	CHIP 10uF 16V X5R 0805
3	C4096	065G080510615K T	CHIP 10uF 16V X5R 0805
3	C117	065G080510615K T	CHIP 10uF 16V X5R 0805
3	C750	065G080510615K T	CHIP 10uF 16V X5R 0805
3	C748	065G080510615K T	CHIP 10uF 16V X5R 0805
3	C502	065G080510615K T	CHIP 10uF 16V X5R 0805
3	C162	065G080510615K T	CHIP 10uF 16V X5R 0805
3	C501	065G080510615K T	CHIP 10uF 16V X5R 0805
3	C123	065G080510615K T	CHIP 10uF 16V X5R 0805
3	C4114	065G080510615K T	CHIP 10uF 16V X5R 0805
3	C744	065G080510615K T	CHIP 10uF 16V X5R 0805
3	C612	065G080510615K T	CHIP 10uF 16V X5R 0805
3	C735	065G080510615K T	CHIP 10uF 16V X5R 0805
3	C116	065G080510615K T	CHIP 10uF 16V X5R 0805
3	C160	065G080510615K T	CHIP 10uF 16V X5R 0805
3	C736	065G080510615K T	CHIP 10uF 16V X5R 0805
3	C161	065G080510615K T	CHIP 10uF 16V X5R 0805
3	C610	065G080522432K Y	CAP CHIP 0805 220N 50V X7R +/-10%
3	C625	065G080522432K Y	CAP CHIP 0805 220N 50V X7R +/-10%
3	C614	065G080522432K Y	CAP CHIP 0805 220N 50V X7R +/-10%
3	C629	065G080522432K Y	CAP CHIP 0805 220N 50V X7R +/-10%
3	C168	065G080547515K M	CAP 0805 4.7UF 10% 16V X5R
3	C167	065G080547515K M	CAP 0805 4.7UF 10% 16V X5R
3	C785	065G120610622K M	CAP 1206 10UF 10% 25V X7R
3	C764	065G120610622K M	CAP 1206 10UF 10% 25V X7R
3	C784	065G120610622K M	CAP 1206 10UF 10% 25V X7R
3	C765	065G120610622K M	CAP 1206 10UF 10% 25V X7R
3	C706	065G120610622K M	CAP 1206 10UF 10% 25V X7R
3	C633	067G311C1013LT	EC SMD 100UF 20% 16V 6.3*7.7 3000 hr 2
3	C731	067G311C1013LT	EC SMD 100UF 20% 16V 6.3*7.7 3000 hr 2
3	C717	067G311F4713LT	EC SMD 470UF 20% 16V 8*10 VZH471M1CTR-0
3	HDCP-U404	070GHDCP500HDC	HDCP CODE
3	FB703	071G 56G301 MA	CHIP BEAD 0805 300OHM 4A

3	FB706	071G 56G301 MA	CHIP BEAD 0805 300OHM 4A
3	FB601	071G 56G301 MA	CHIP BEAD 0805 300OHM 4A
3	FB106	071G 56G301 MA	CHIP BEAD 0805 300OHM 4A
3	FB705	071G 56G301 MA	CHIP BEAD 0805 300OHM 4A
3	FB700	071G 56G301 MA	CHIP BEAD 0805 300OHM 4A
3	FB713	071G 56K121 M	CHIP BEAD 0805 120R 25% MGLB2012E121T-L
3	FB714	071G 56K121 M	CHIP BEAD 0805 120R 25% MGLB2012E121T-L
3	FB712	071G 56K121 M	CHIP BEAD 0805 120R 25% MGLB2012E121T-L
3	FB711	071G 56K121 M	CHIP BEAD 0805 120R 25% MGLB2012E121T-L
3	FB606	071G 57G121 TA	CHIP BEAD 1206 120R 25% HCB3216KF-121T30
3	FB600	071G 57G121 TA	CHIP BEAD 1206 120R 25% HCB3216KF-121T30
3	FB604	071G 57G121 TA	CHIP BEAD 1206 120R 25% HCB3216KF-121T30
3	FB603	071G 57G121 TA	CHIP BEAD 1206 120R 25% HCB3216KF-121T30
3	FB408	071G 59A121 TA	CHIP BEAD 120R/3000mA HCB1608KF-121T30
3	L105	073G 6322810M	SMD CHOKE 0.22UH 10% 0.05A 2.1R MGF160
3	L106	073G 6322810M	SMD CHOKE 0.22UH 10% 0.05A 2.1R MGF160
3	L705	073G253S 67 M	SMD CHOKE 3.3UH 20% 0.028R 6.5A
3	L706	073G253S 67 M	SMD CHOKE 3.3UH 20% 0.028R 6.5A
3	L701	073G253S 68 H	SMD CHOKE 2.2UH 30% 2.04A 0.031R SPI530L
3	CN500	088G 34019K AV	HDMI HEADER R/A 19P BLACK H=8.4
3	D101	093G 64 33	SWITCHING BAV99 0.2A 85V SOT-23
3	D601	093G 6432P	LL4148
3	ZD409	093G 39S911 T	ZENER BZX84-C5V6 5.6V 0.25W SOT-23
3	ZD700	093G 39S923 T	ZENER BZX84B6V8 6.8 0.5 SOT-23
3	D702	093G 60S 37 T	SCHOTTKY SM260A 2A 40V DO-214AC
3	ZD120	093G 64S500 SU	ESD MLVG04025R0QV05BP INPAQ
3	ZD100	093G 64S500 SU	ESD MLVG04025R0QV05BP INPAQ
3	ZD104	093G 64S500 SU	ESD MLVG04025R0QV05BP INPAQ
3	ZD108	093G 64S500 SU	ESD MLVG04025R0QV05BP INPAQ
3	ZD102	093G 64S500 SU	ESD MLVG04025R0QV05BP INPAQ
3	ZD109	093G 64S500 SU	ESD MLVG04025R0QV05BP INPAQ
3	ZD106	093G 64S500 SU	ESD MLVG04025R0QV05BP INPAQ
3	ZD103	093G 64S500 SU	ESD MLVG04025R0QV05BP INPAQ
3	ZD123	093G 64S500 SU	ESD MLVG04025R0QV05BP INPAQ
3	ZD112	093G 64S500 SU	ESD MLVG04025R0QV05BP INPAQ
3	ZD119	093G 64S500 SU	ESD MLVG04025R0QV05BP INPAQ
3	ZD113	093G 64S500 SU	ESD MLVG04025R0QV05BP INPAQ
3	ZD107	093G 64S500 SU	ESD MLVG04025R0QV05BP INPAQ
3	ZD105	093G 64S500 SU	ESD MLVG04025R0QV05BP INPAQ
3	ZD114	093G 64S500 SU	ESD MLVG04025R0QV05BP INPAQ
3	ZD115	093G 64S500 SU	ESD MLVG04025R0QV05BP INPAQ
3	ZD110	093G 64S500 SU	ESD MLVG04025R0QV05BP INPAQ
3	ZD124	093G 64S500 SU	ESD MLVG04025R0QV05BP INPAQ
3	ZD111	093G 64S500 SU	ESD MLVG04025R0QV05BP INPAQ
3	ZD101	093G 64S500 SU	ESD MLVG04025R0QV05BP INPAQ
3	U106	356G0566024600	Silicon Tuner MxL661-AG-R
3	U400	356G0568590601	SCALER MSD8561VXM-W4 HSBGA-590
3	U600	356G061613300A	AUDIO AD82588B-LG48NAY 2x15W stereo E-LQ
3	U404	356G333304A600	sAND FLASH THGBMBG5D1KBAIT 4G BGA 153
3	U704	356GD563006183	DC/DC SY8009BABC 2A 3.3V SOT23-6

3	U701	356GD563008140	DC/DC TPS54328DDAR 3A 0.76~7V DDA
3	U706	356GD563008141	DC/DC TPS54528DDAR 5A ADJ DDA
3	U705	356GD563008141	DC/DC TPS54528DDAR 5A ADJ DDA
3	U703	356GD563008609	DC/DC MSH6000A 5A ADJ ESOP-8
3	Q501	357G07630620HF	HF MOSFET 2N7002K_R1_00001 0.3A 60V
3	R515	361G04025108FT	RST 0402 5.1 ohm 1% 1/16W SMD04025R1FT
3	R140	361G04025108FT	RST 0402 5.1 ohm 1% 1/16W SMD04025R1FT
3	R501	361G04025108FT	RST 0402 5.1 ohm 1% 1/16W SMD04025R1FT
3	R512	361G04025108FT	RST 0402 5.1 ohm 1% 1/16W SMD04025R1FT
3	R138	361G04025108FT	RST 0402 5.1 ohm 1% 1/16W SMD04025R1FT
3	R505	361G04025108FT	RST 0402 5.1 ohm 1% 1/16W SMD04025R1FT
3	R500	361G04025108FT	RST 0402 5.1 ohm 1% 1/16W SMD04025R1FT
3	R141	361G04025108FT	RST 0402 5.1 ohm 1% 1/16W SMD04025R1FT
3	R143	361G04025108FT	RST 0402 5.1 ohm 1% 1/16W SMD04025R1FT
3	R517	361G04025108FT	RST 0402 5.1 ohm 1% 1/16W SMD04025R1FT
3	R142	361G04025108FT	RST 0402 5.1 ohm 1% 1/16W SMD04025R1FT
3	R137	361G04025108FT	RST 0402 5.1 ohm 1% 1/16W SMD04025R1FT
3	R503	361G04025108FT	RST 0402 5.1 ohm 1% 1/16W SMD04025R1FT
3	R136	361G04025108FT	RST 0402 5.1 ohm 1% 1/16W SMD04025R1FT
3	R513	361G04025108FT	RST 0402 5.1 ohm 1% 1/16W SMD04025R1FT
3	R139	361G04025108FT	RST 0402 5.1 ohm 1% 1/16W SMD04025R1FT
3	C704	365G040222502K000M	CAP 0402 2.2uF 20% 6.3V X7S GRM155C70J2
3	C4150	365G040222502K000M	CAP 0402 2.2uF 20% 6.3V X7S GRM155C70J2
3	C4082	365G040222502K000M	CAP 0402 2.2uF 20% 6.3V X7S GRM155C70J2
3	C4034	365G040222502K000M	CAP 0402 2.2uF 20% 6.3V X7S GRM155C70J2
3	C4044	365G040222502K000M	CAP 0402 2.2uF 20% 6.3V X7S GRM155C70J2
3	C4011	365G040222502K000M	CAP 0402 2.2uF 20% 6.3V X7S GRM155C70J2
3	C728	365G040222502K000M	CAP 0402 2.2uF 20% 6.3V X7S GRM155C70J2
3	C4083	365G040222502K000M	CAP 0402 2.2uF 20% 6.3V X7S GRM155C70J2
3	C738	365G080522606M000M	CAP 0805 22uF 20% 6.3V X6S GRM21BC80J22
3	C739	365G080522606M000M	CAP 0805 22uF 20% 6.3V X6S GRM21BC80J22
3	C723	365G080522606M000M	CAP 0805 22uF 20% 6.3V X6S GRM21BC80J22
3	C724	365G080522606M000M	CAP 0805 22uF 20% 6.3V X6S GRM21BC80J22
3	C620	365G080522606M000M	CAP 0805 22uF 20% 6.3V X6S GRM21BC80J22
3	C771	365G1206226A2K000M	CAP 1206 22UF 10% 10V X7R GRM31CR71A226
3	C770	365G1206226A2K000M	CAP 1206 22UF 10% 10V X7R GRM31CR71A226
3	C769	365G1206226A2K000M	CAP 1206 22UF 10% 10V X7R GRM31CR71A226
3	C791	365G1206226A2K000M	CAP 1206 22UF 10% 10V X7R GRM31CR71A226
3	C789	365G1206226A2K000M	CAP 1206 22UF 10% 10V X7R GRM31CR71A226
3	C790	365G1206226A2K000M	CAP 1206 22UF 10% 10V X7R GRM31CR71A226
3	C600	365G121010632K000T	CAP 1210 10UF 10% 50V X7R UMK325AB7106K
3	MAC-U404	370G0MAC635MGO	Buy key Mango TV-MSD8561VXM
3	HDCP2-U404	370GHDCP603PHP	CD CD HDCP2.2 code for Wifi Miracast
3	FB409	371G042P121M02	CHIP BEAD 0402 120R 25% MGLB1005M121T1R3
3	FB405	371G042P121M02	CHIP BEAD 0402 120R 25% MGLB1005M121T1R3
3	FB407	371G042P121M02	CHIP BEAD 0402 120R 25% MGLB1005M121T1R3
3	FB403	371G042P121M02	CHIP BEAD 0402 120R 25% MGLB1005M121T1R3
3	FB406	371G042P121M02	CHIP BEAD 0402 120R 25% MGLB1005M121T1R3
3	FB402	371G042P121M02	CHIP BEAD 0402 120R 25% MGLB1005M121T1R3
3	FB101	371G042P121M02	CHIP BEAD 0402 120R 25% MGLB1005M121T1R3

3	FB404	371G042P121M02	CHIP BEAD 0402 120R 25% MGLB1005M121T1R3
3	FB103	371G042P121M02	CHIP BEAD 0402 120R 25% MGLB1005M121T1R3
3	FB400	371G042P121M02	CHIP BEAD 0402 120R 25% MGLB1005M121T1R3
3	FB401	371G042P121M02	CHIP BEAD 0402 120R 25% MGLB1005M121T1R3
3	FB104	371G042U102C00	CHIP BEAD 0402 1000 25% FCM1005KF-102T0
3	L702	373G253S140Y01	SMD CHOKE 2.2uH 20% 1.48A 0.058R NRS301
3	L601	373G253S147Y00	SMD CHOKE 22uH 20% 1.5A 0.115R NR6045T22
3	L600	373G253S147Y00	SMD CHOKE 22uH 20% 1.5A 0.115R NR6045T22
3	L602	373G253S147Y00	SMD CHOKE 22uH 20% 1.5A 0.115R NR6045T22
3	L603	373G253S147Y00	SMD CHOKE 22uH 20% 1.5A 0.115R NR6045T22
3	L101	373G253S239D00	SMD CHOKE 75R 25% 280mA 75R BW21S7511B01
3	L700	373G253S366M00	SMD CHOKE 4.7UH 20% 2.2A 0.057 MPIT5020
3	X100	393G022S60100J	CRYSTAL NXH16.000AE18F-KAB8-PA 16MHz 18
3	X400	393G022SA8200J	CRYSTAL NXK24.000AE12F-KAB8 24MHz 12pF
3	D400	393G060S03000T00HF	SCHOTTKY BAT54C_R1_00001 0.2A 30V SOT-2
3	D500	393G060S03000T00HF	SCHOTTKY BAT54C_R1_00001 0.2A 30V SOT-2
3	D600	393G060S04300T00HF	SCHOTTKY SX36 HF 3A 60V SMA
3	E715	715G7204M0E000004N	MAIN PCB FR4 DS 133.5*207*1.6mm
3	E715	715G7204M0E000004Y	MAIN PCB FR4 DS 133.5*207*1.6mm
2		SMTIRPFFAA9	IR BOARD FOR SMT
3	R202	061G0603101 JT	RST CHIP 100R 1/10W 5% TZAI YUAN
3	R301	061G0402102 JT	RST CHIP 1K 1/16W 5% TZAI YUAN
3	R201	061G0402103 JT	RST CHIP 10K 1/16W 5% TZAI YUAN
3	R302	061G0402222 JT	RST CHIP 2K2 1/16W 5% TZAI YUAN
3	CN201	033G8032 5F S HR	CONNECTOR
3	C304	065G0402105A5K M	CAP 0402 1UF 10% 10V X5R
3	C305	065G0402105A5K M	CAP 0402 1UF 10% 10V X5R
3	Q301	057G 477904 T	TRA BC847BW 100mA/45V SOT-323
3	LED301	081G 63R 1 EL	CHIP LED RED 19-21B/R6C-BL1M2VY/3T
3	LED301	081G 63R 1 GP	CHIP LED RED GPTS06033RC3-PB
3	U201	356GS927075	IR RECEIVER TSOP75336WTT 36 KHz
3	E715	715G7055R01000004M	IR PCB FR4 DS 30*8.5*1.6mm
3	E715	715G7055R01000004Y	IR PCB FR4 DS 30*8.5*1.6mm
2		SMTKEPFEEA9	KEY BOARD FOR SMT
3	R01	061G06031201FF	RST CHIPR 1.2KOHM +-1% 1/10W
3	R01	061G06031201FT	RST CHIP 1K2 1/10W 1%
3	R01	061G06031201FY	RST CHIPR 1.2KOHM +-1% 1/10W
3	R05	061G06031502FF	RST CHIPR 15KOHM +-1% 1/10W FENGHUA
3	R05	061G06031502FT	RST CHIP 15K 1/10W 1%
3	R05	061G06031502FY	RST CHIP 15K 1/10W 1%
3	R04	061G06032201FT	RST CHIP 2K2 1/10W 1%
3	R04	061G06032201FY	RST CHIP 2K2 1/10W 1%
3	R02	061G0603470 JF	RST CHIPR 47OHM +-5% 1/10W FENGHUA
3	R02	061G0603470 JT	RST CHIP 47R 1/10W 5% TZAI YUAN
3	R03	061G06036801FF	RST CHIPR 6.8KOHM +-1% 1/10W FENGHUA
3	R03	061G06036801FT	RST CHIP 6K8 1/10W 1%
3	R03	061G06036801FY	RST CHIP 6K8 1/10W 1%
3	C06	065G060310432K A	CAP 0603 100NF 10% 50V X7R
3	C06	065G060310432K F	CAP CHIP 0603 0.1UF K 50V X7R
3	C06	065G060310432K Y	CAP 0603 100NF 10% 50V X7R

3	CN01	311GW125D02ADX	WAFER 1.25mm 2P R/A S1315-02RVB-S03-K
3	SW01	377G060902C0CJ	CHIP TACT SW 6P 6mm 160g SMD
3	SW01	377G060902C0HC	CHIP TACT SW 6P 6mm 160g SMD
3	E715	715G7088K01000004K	KEY PCB FR4 DS 22*29.5*1.6mm
2		705TXD57224	Q8101
3		0M1G1730 8120	SCREW M3 8
3	Q8101	357G0600100020	MOSFET AOTF298L 33A 100V TO-220F
3	HS8101	Q90T0236007A0000SY	HEAT SINK
2		705TXD93200	D8101
3	D8101	093G 60500	FMEN210A TO-220 SANKEN
3		0M1G1730 8120	SCREW M3 8
3	HS8102	Q90T0236007A0000SY	HEAT SINK
2		LNEW661XXA6SMT	CONVERTER BOARD FOR SMT
3	R8117	061G08051003FY	RST CHIP 100K 1/8W 1%
3		LNEW661XXA6AI	CONVERTER BOARD FOR AI
3	R8149	061G0805203 JT	RST CHIPR 20K +-5% 1/8W TZAI YUAN
3	R8119	061G08051003FY	RST CHIP 100K 1/8W 1%
3	C8104	065G080522432K F	CAP 0805 220NF 10% 50V X7R
3	R8109	061G08051003FY	RST CHIP 100K 1/8W 1%
3	R8105	061G12064700FT	RST 1206 470R 1% 1/4W TZAI YUAN
3	C8115	065G080510532K T	CAP 0805 1UF 10% 50V X7R
3	ZD8101	393G039S95300T00HF	HF BZT52-B9V1_R1_00001 9.1V 0.41W
3	R8169	061G12061508FT	RST 1206 1.5R 1% 1/4W
3	R8132	061G08056202FY	RST 0805 62K 1% 1/8W -
3	R8144	361G12061108FT	RST 1206 1.1R 1% 1/4W SMD12061R1F
3	R8146	361G12061108FT	RST 1206 1.1R 1% 1/4W SMD12061R1F
3	C8132	065G080510432K Y	CAP CHIP 0805 100N 50V X7R +/-10%
3	R8147	061G12061508FT	RST 1206 1.5R 1% 1/4W
3	R8168	061G12061508FT	RST 1206 1.5R 1% 1/4W
3	R8145	061G12061508FT	RST 1206 1.5R 1% 1/4W
3	C8112	065G080510432K Y	CAP CHIP 0805 100N 50V X7R +/-10%
3	R8139	061G1206101 JT	RST CHIPR 100 OHM +-5% 1/4W TZAI YUAN
3	C8134	065G080510432K Y	CAP CHIP 0805 100N 50V X7R +/-10%
3	R8170	061G12061508FT	RST 1206 1.5R 1% 1/4W
3	C8133	065G080522522K T	CAP 0805 2.2uF 10% 25V X7R
3	R8106	061G12061002FT	RST CHIPR 10KOHM +-1% 1/4W 1206
3	R8110	061G08052203FT	RST CHIPR 220KOHM +-1% 1/8W
3	R8137	061G08051003FY	RST CHIP 100K 1/8W 1%
3	R8112	061G08051103FF	RST CHIPR 110KOHM +-1% 1/8W FENGHUA
3	Q8102	057G 417907 T	TRA PMBT3906 PNP -200mA/-40V SOT-23
3	C8110	065G080510432K F	CAP CHIP 0805 0.1UF K 50V X7R
3	R8103	061G08051002FT	RST CHIP 10K 1/8W 1%
3	R8107	061G0805302 JY	RST CHIPR 3K +-5% 1/8W YAGEO
3	C8114	065G080522232K A	CAP 0805 2.2NF 10% 50V X7R
3	R8151	061G08051003FY	RST CHIP 100K 1/8W 1%
3	R8134	061G0805103 JT	RST 0805 10K 5% 1/8W
3	R8131	061G08053302FT	RST CHIP 33K 1/8W 1%
3	R8160	361G12061208FY	RST 1206 1.2R 1% 1/4W -
3	R8120	061G0805103 JT	RST 0805 10K 5% 1/8W
3	C8145	065G080522232K Y	CAP CHIP 0805 2N2 50V X7R +/-10%

3	Q8103	357G07630620HF	HF MOSFET 2N7002K_R1_00001 0.3A 60V
3	R8141	061G1206000 JF	RST CHIPR MAX0R05 1/4W FENGHUA
3	C8146	065G080522232K Y	CAP CHIP 0805 2N2 50V X7R +/-10%
3	R8153	061G08052203FT	RST CHIPR 220KOHM +-1% 1/8W
3	R8152	061G08050004JT	RST CHIPR 0805 0 OHM 4A
3	R8138	061G1206101 JT	RST CHIPR 100 OHM +-5% 1/4W TZAI YUAN
3	R8140	061G1206101 JT	RST CHIPR 100 OHM +-5% 1/4W TZAI YUAN
3	R8116	061G08052203FT	RST CHIPR 220KOHM +-1% 1/8W
3	C8103	065G080522432K F	CAP 0805 220NF 10% 50V X7R
3	R8150	061G08050004JT	RST CHIPR 0805 0 OHM 4A
3	C8143	065G080510131J Y	CAP CHIP 0805 100P 50V NP0 +/-5%
3	R8148	061G0805000 JY	RST CHIPR MAX 0R05 OHM 1/8W YAGEO
3	C8131	065G080510432K Y	CAP CHIP 0805 100N 50V X7R +/-10%
3	C8109	065G080510522K M	AP 0805 1UF 10% 25V X7R
3	R8115	061G0805205 JT	RST CHIPR 2M +-5% 1/8W TZAI YUAN
3	D8102	393G0605S0000T00HF	HF SS1060FL_R1_00001 1A 60V SOD123FL
3	R8113	061G08051052FF	RST CHIPR 10.5K OHM +- 1% 1/8W FENGHUA
3	R8136	061G0805304 JY	RST CHIPR 300K +-5% 1/8W YAGEO
3	R8111	061G08051003FT	RST CHIP 100K 1/8W 1%
3	R8108	061G08053303FT	RST CHIP 330K 1% 1/8W
3	IC8101	356G0700024600	LED DRIVER LD7890GS SOP-24
3	R8101	061G0805229 JT	RST CHIPR 2R2 +-5% 1/8W TZAI YUAN
3	R8155	061G08052003FT	RST CHIP 200K 1/8W 1%
3	C8111	065G080547131J M	CAP 0805 470PF 5% 50V NP0
3	Q8143	057G 763139	MOSFET AOD478 11A 100V TO-252
3	R8102	061G0805330 JT	RST CHIP 33R 1/8W 5% TZAI YUAN
3	R8133	061G08051002FT	RST CHIP 10K 1/8W 1%
3	R8135	061G08051009FT	RST CHIP R 10ohm +/-1% 1/8W
3	R8112	061G08051103FT	RST CHIP R 110K 1/8W +/-1%
3	Q8102	057G 417517	Tra LMBT3906LT1G -200mA/-40V SOT-23 LRC
3	R8103	061G08051002FF	RST CHIPR 10KOHM +-1% 1/8W FENGHUA
3	R8107	061G0805302 JT	RST CHIP 3K 1/8W 5% TZAI YUAN
3	R8151	061G08051003FT	RST CHIP 100K 1/8W 1%
3	R8134	061G0805103 JF	RST CHIPR 10K OHM +-5% 1/8W FENGHUA
3	R8131	061G08053302FF	RST CHIPR 33KOHM +-1% 1/8W FENGHUA
3	R8160	361G12061208FT	RST 1206 1.2R 1% 1/4W -
3	R8141	061G1206000 JT	RST CHIPR MAX0R05 1/4W TZAI YUAN
3	R8138	061G1206101 JF	RST CHIPR 100 OHM +-5% 1/4W FENGHUA
3	R8140	061G1206101 JF	RST CHIPR 100 OHM +-5% 1/4W FENGHUA
3	R8117	061G08051003FT	RST CHIP 100K 1/8W 1%
3	R8149	061G0805203 JF	RST CHIPR 20KOHM +-5% 1/8W FENGHUA
3	R8109	061G08051003FT	RST CHIP 100K 1/8W 1%
3	R8105	061G12064700FF	RST 1206 470R 1% 1/4W FENGHUA
3	R8115	061G0805205 JF	RST CHIPR 2M +-5% 1/8W FENGHUA
3	R8113	061G08051052FT	RST CHIP 10.5K OHM 1/8W 1% TZAI YUAN
3	R8111	061G08051003FF	RST CHIPR 100KOHM +-1% 1/8W FENGHUA
3	R8108	061G08053303FF	RST CHIP 330K 1/8W 1%
3	R8101	061G0805229 JF	RST CHIPR 2R2 +-5% 1/8W FENGHUA
3	R8155	061G08052003FF	RST CHIPR 200KOHM +-1% 1/8W FENGHUA
3	R8102	061G0805330 JF	RST CHIPR 33 OHM +-5% 1/8W FENGHUA

3	R8133	061G08051002FF	RST CHIPR 10KOHM +-1% 1/8W FENGHUA
3	R8135	061G08051009FF	RST CHIPR 10 OHM+-1% 1/8W FENGHUA
3	R8148	061G0805000 JT	RST 0805 0.05R MAX 1/8W
3	R8106	061G12061002FF	RST CHIPR 10KOHM +-1% 1/4W FENGHUA
3	R8139	061G1206101 JF	RST CHIPR 100 OHM +-5% 1/4W FENGHUA
3	R8146	361G12061108FY	RST 1206 1.1R 1% 1/4W RC1206FR-071R1L
3	R8144	361G12061108FY	RST 1206 1.1R 1% 1/4W RC1206FR-071R1L
3	C8115	065G080510532K M	CAP 0805 1UF 10% 50V X7R
3		ADE1220XB8AI	ADAPTER BOARD FOR AI
4	C9319	067G 5151017KT	EC 100UF 20% 50V 10*9 EJ
4	BD9902	006G 31 4	1.7MM RIVET
4	T9301	006G 31 4	1.7MM RIVET
4	CN9901	006G 31500	EYELET
4	T9101	006G 31500	EYELET
4	L9901	006G 31502	EYELET
4	NR9902	006G 31502	EYELET
4	L9902	006G 31502	EYELET
4	NR9901	006G 31502	EYELET
4	IC9103	056G 158 10 T	DC/DC AS431AZTR-E1 150MA 40V TO-92
4	C9110	065G 1K101 2T6921	CAP CER 100pF 1KV K Y5P
4	C9813	065G 1K101 2T6921	CAP CER 100pF 1KV K Y5P
4	C9817	065G 1K10193T	CAP CER 100PF 10% 1KV R
4	C9303	065G 1K22293S	CAP CER 2.2NF 10% 1KV R TAPING
4	C9904	065G306K10123R	CAP Y1 100PF 10% 250V Y5P
4	C9908	065G306K22123R	CAP Y1 220PF 10% 250V Y5P
4	C9907	065G306K33123R	CAP Y1 330PF 10% 250V Y5P
4	C9902	065G306K33123R	CAP Y1 330PF 10% 250V Y5P
4	C9325	065G306M10233R	CAP Y1 1NF 20% 250V Y5U
4	C9122	067G 3151007KB A	EC 10UF 20% 50V 6.3*7 3000H ER
4	C9114	067G 5153316KT	EC 330UF 20% 35V 10*12 5000H EV
4	C9317	067G 5154714KT	EC 470UF 20% 25V 10*12 5000 hr 1.45A EV
4	C9304	067G 5154714KT	EC 470UF 20% 25V 10*12 5000 hr 1.45A EV
4	C9805	067G315M2207KB	EC 22UF 20% 50V 6.3*7 3000 hr
4	C9124	067G315M2207KB	EC 22UF 20% 50V 6.3*7 3000 hr
4	FB9301	071G 55 23 S	FERRITE BEAD LB 3.5*0.8*7.5A
4	FB9302	071G 55 23 S	FERRITE BEAD LB 3.5*0.8*7.5A
4	FB9802	071G 55 23 S	FERRITE BEAD LB 3.5*0.8*7.5A
4	FB9803	071G 55 23 S	FERRITE BEAD LB 3.5*0.8*7.5A
4	FB9904	071G 55 23 S	FERRITE BEAD LB 3.5*0.8*7.5A
4	D9102	093G 52908	RECTIFIER UF4007 A0 1 1000 DO-41
4	D9303	093G 60953	SCHOTTKY FR107G-A0 1A 1000V DO-41
4	ZD9102	093G 39G 7	ZENER GDZJ15B 15 0.5 DO-35
4	D9301	093G1080 252T	RECTIFIER SARS01-V1 1.2A 800V DO-41
4	J909	095G 90 23	JUMP WIRE - -
4	J918	095G 90 23	JUMP WIRE - -
4	J914	095G 90 23	JUMP WIRE - -
4	J920	095G 90 23	JUMP WIRE - -
4	J913	095G 90 23	JUMP WIRE - -
4	J912	095G 90 23	JUMP WIRE - -
4	J910	095G 90 23	JUMP WIRE - -

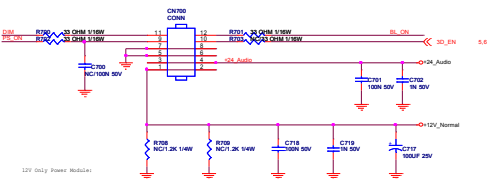
4	J906	095G 90 23	JUMP WIRE --
4	FB9102	095G 90 23	JUMP WIRE --
4	J916	095G 90 23	JUMP WIRE --
4	J919	095G 90 23	JUMP WIRE --
4	J923	095G 90 23	JUMP WIRE --
4	J915	095G 90 23	JUMP WIRE --
4	J904	095G 90 23	JUMP WIRE --
4	J902	095G 90 23	JUMP WIRE --
4	J907	095G 90 23	JUMP WIRE --
4	J921	095G 90 23	JUMP WIRE --
4	J905	095G 90 23	JUMP WIRE --
4	J911	095G 90 23	JUMP WIRE --
4	J903	095G 90 23	JUMP WIRE --
4	J917	095G 90 23	JUMP WIRE --
4	R9301	361G01SJ10852T00TZ	RST WD 0.1R 5% 1W NKNP1WS0R1JT52E8
4	R9306	361G152M22052T00TZ	RST MOF 22R 5% 2W MOF2WS22RJT52
4	R9302	361G152M82352T00TZ	RST MOF 82K 5% 2W MOF2WS82KJT52
4	R9321	361G2SWJ36852T00TZ	RST NWR 0R36 5% 2W NKNP2WS0R36JT52
4	RV9902	362G0010501MIT	SPARK GAP 500V -20/+30%
4	RV9903	362G0010501MIT	SPARK GAP 500V -20/+30%
4	C9140	365G001D5096WT	CAP CER 5PF 0.5pF 1KV SL CC81-1KV-06d-S
4	E715	715G6607P02001002M	PWR PCB FR2 CTI>600 SS 195.5*271*1.6MM
3		LNEW661XXA6AI	CONVERTER BOARD FOR AI
4	J8108	095G 90 23	JUMP WIRE --
4	J8107	095G 90 23	JUMP WIRE --
4	J8106	095G 90 23	JUMP WIRE --
4	J8105	095G 90 23	JUMP WIRE --
4	J8110	095G 90 23	JUMP WIRE --
4	J8103	095G 90 23	JUMP WIRE --
4	J8111	095G 90 23	JUMP WIRE --
4	J8102	095G 90 23	JUMP WIRE --
4	R8104	361G152M10852T00TZ	RST MOF 0.1R 5% 2W MOF2W0R1JT52
4	E715	715G6432P01000002H	PWR PCB FR1 CTI>600 SS 150*150mm
4	J8101	095G 90 23	JUMP WIRE --
4	J8104	095G 90 23	JUMP WIRE --
4	R8118	361G152M10852T00TZ	RST MOF 0.1R 5% 2W MOF2W0R1JT52
4	R8104	061G152M10852T SY	RST MOF 0R1 5% 2W
4	R8118	061G152M10852T SY	RST MOF 0R1 5% 2W

REVISION HISTORY

TPV (Top Victory Electronics Co., Ltd.)		OEM MODEL	Size	B
結構圖		TPV MODEL	Rev	A
Key Component	01. COVER	PCB NAME		
Date	Wednesday, October 08, 2014	Sheet	1 of 13	稱參 <稱參>

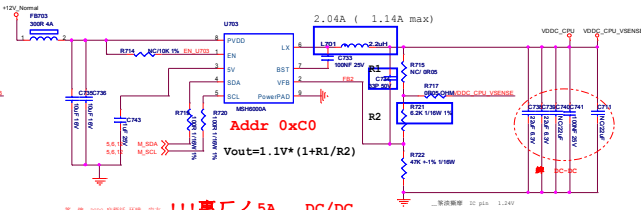
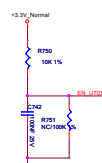
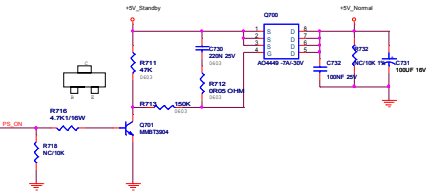
Connetor

CN700 14pin 12pin 夹非 connector.



12V Only Power Module

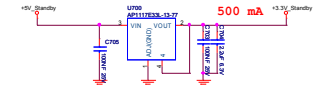
+5V_Standby => +5V_Normal



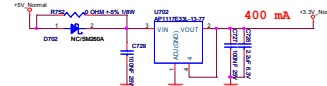
!!! 惠厂ノ 5A DC/DC

LDO

+5V_Standby => +3.3V_Standby

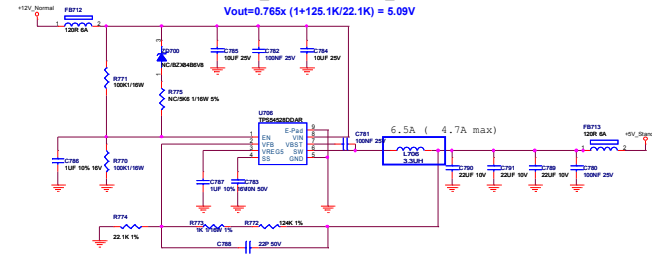


+5V_Normal => +3.3V_Normal



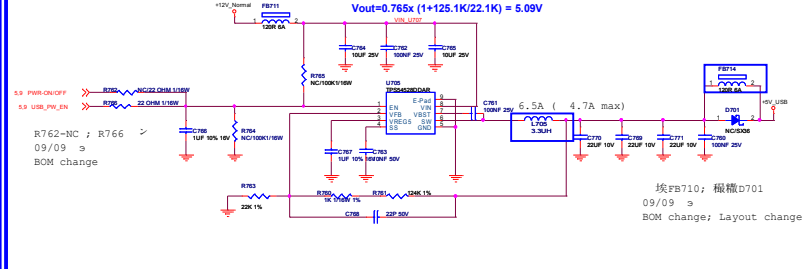
+12V_Normal => +5V_Standby

Vout=0.765x((+125.1K/22.1K) = 5.09V



+12V_SW => +5VUSB

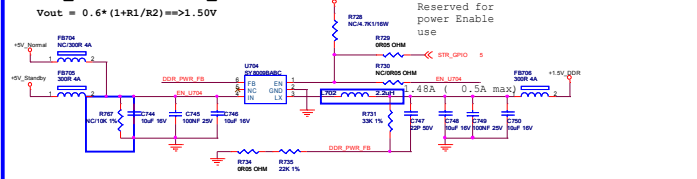
Vout=0.765x((+125.1K/22.1K) = 5.09V



埃FB710; 板槽D701
09/09 a
BOM change; Layout change

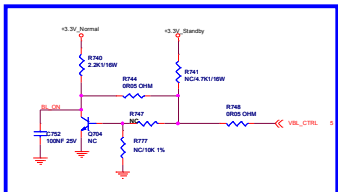
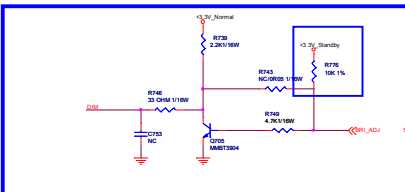
+5V_Normal => +1.5V_DDR

Vout = 0.6*(1+R1/R2) => 1.50V



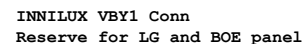
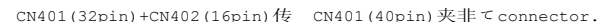
惠厂ノ 500mA DC/DC!!

Reserved for power Enable use

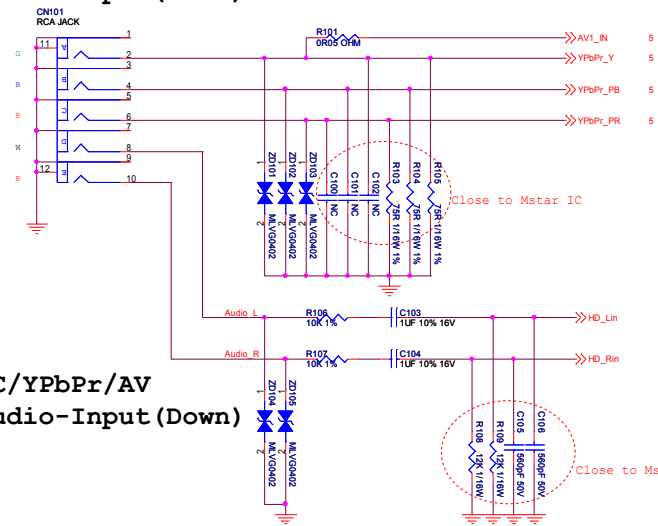


TPV (Top Victory Electronics Co., Ltd.)	QW-MODEL	Rev	D
TPV MODEL	TPV MODEL	Rev	A
DA SYSTEM POWER	PCB NAME		
Date: Thursday, October 05, 2014	Sheet	1 of 15	B-B





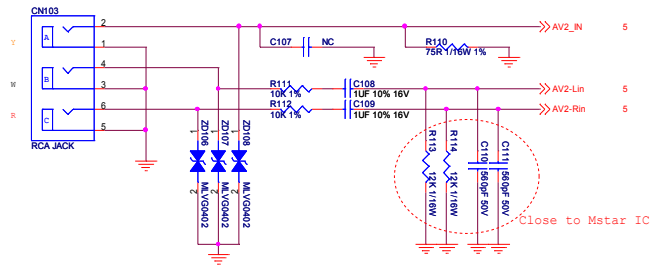
Video-Input (Down)



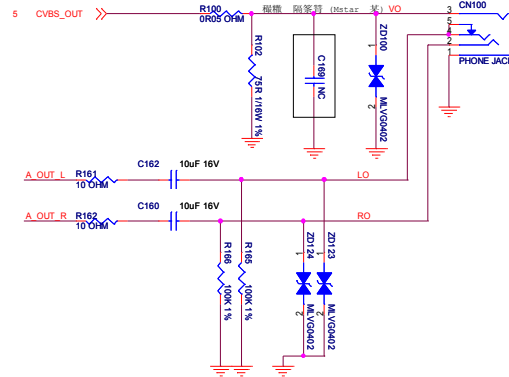
PC/YPbPr/AV
Audio-Input (Down)



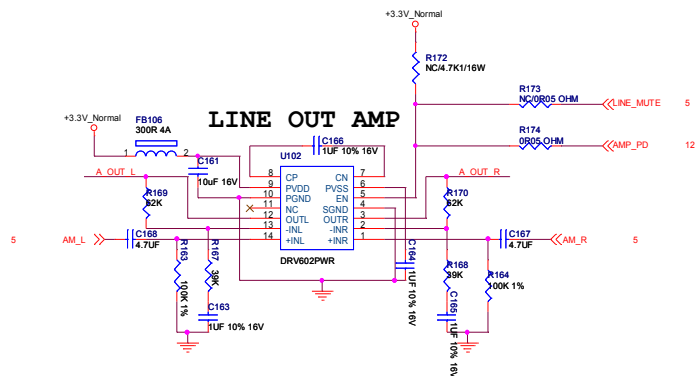
Side AV Input

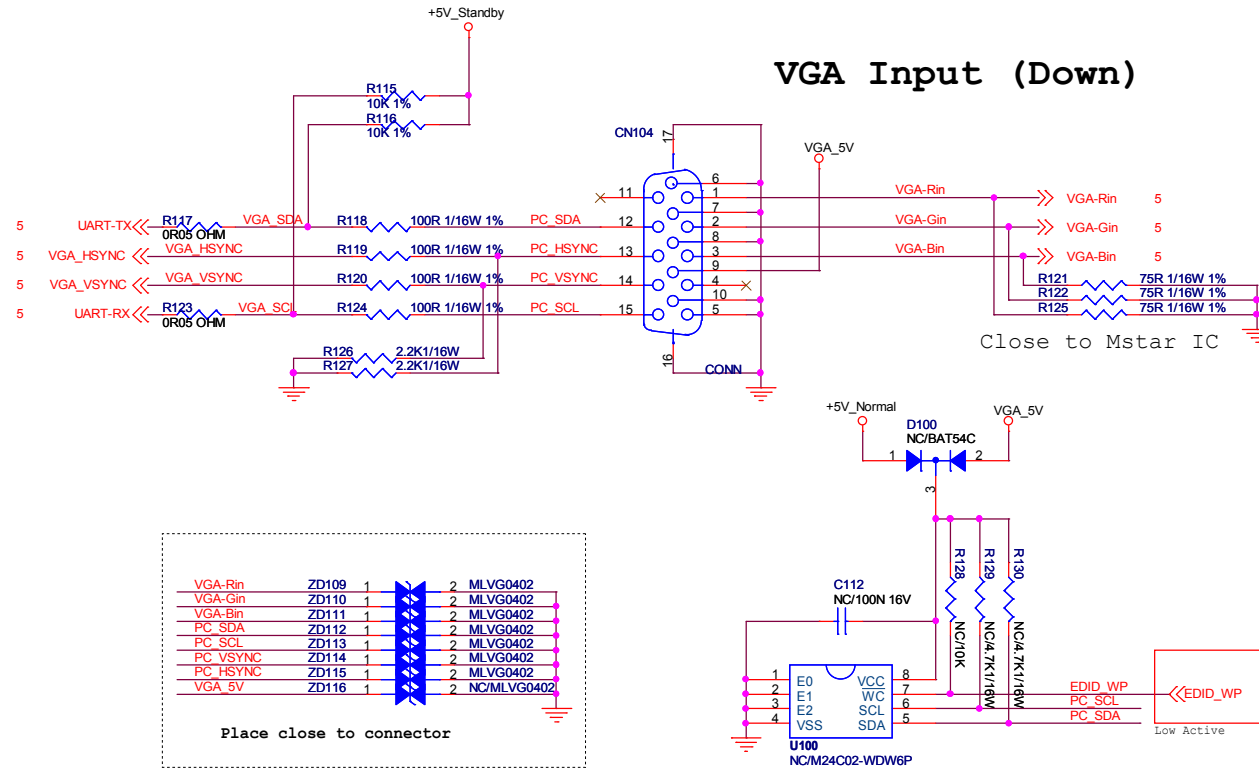


AV OUT (Side)

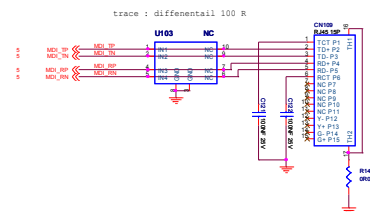
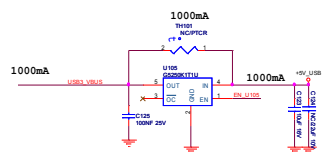
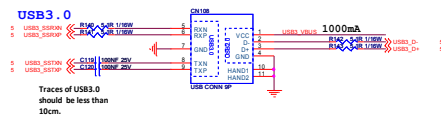
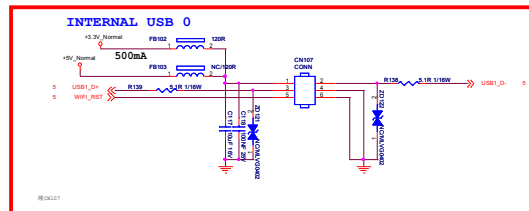
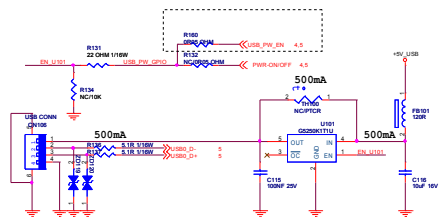


LINE OUT AMP



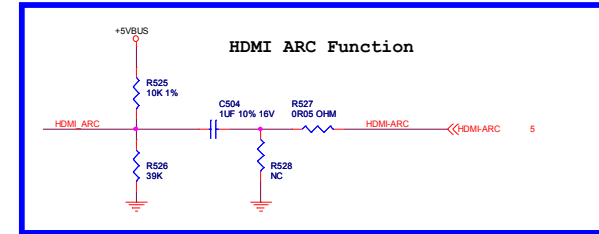
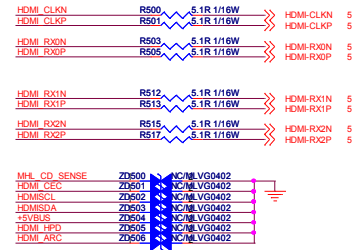
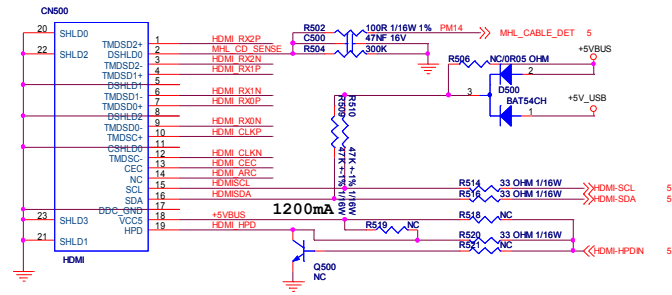


TPV (Top Victory Electronics Co., Ltd.)		OEM MODEL		Size	B
鋸隔瓜網膜		TPV MODEL		Rev	A
Key Component	08. VGA	PCB NAME		称爹 <称爹>	
Date	Thursday, October 09, 2014	Sheet	8 of 13		

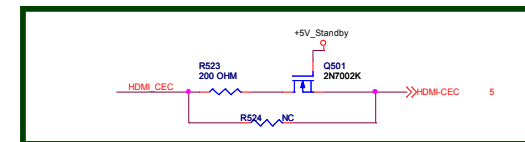
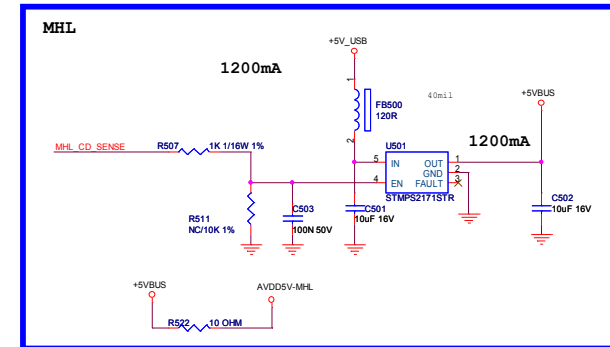


TPV (Top Valley Electronics Co., Ltd.)	DESIGNER	Rev.	D
DESIGNER	YIN MINGJIAN	Rev.	A
PCB NAME	48 USB & ETHERNET	Sheet	9 of 13
Date	Thursday, October 28, 2016		

HDMI? (Side) / (MHL)

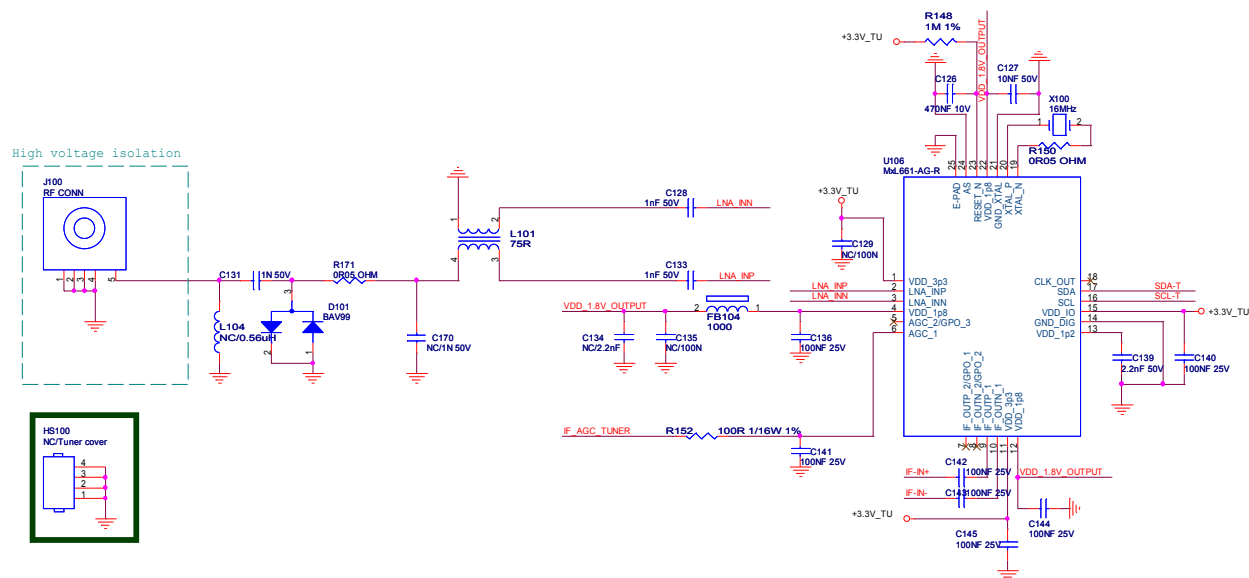


HDMI ARC
DC voltage level = 4V
Signal voltage p-p = 500 mV +/-100mV
(Test need add 55 ohm terminal resistor to GND)
Tr,Tf <= 60 ns

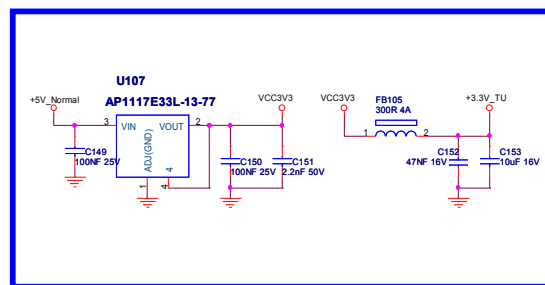


TPV (Top Victory Electronics Co., Ltd.)		OEM MODEL		Size	C
蘇陽風扇廠		TPV MODEL		Rev	A
Key Component	10. HDMI	PCB NAME		料號	<修番>
Date	Thursday, October 09, 2014	Sheet	10 of 13		

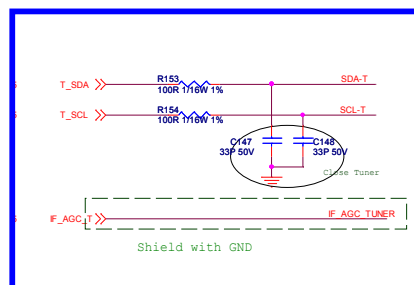
SI TUNER



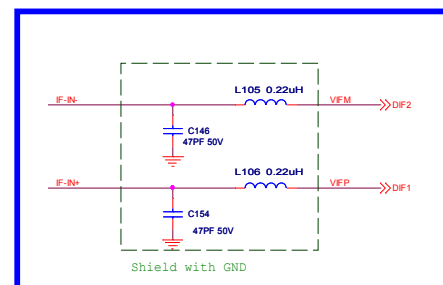
Tuner Power

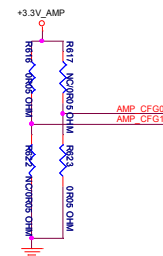
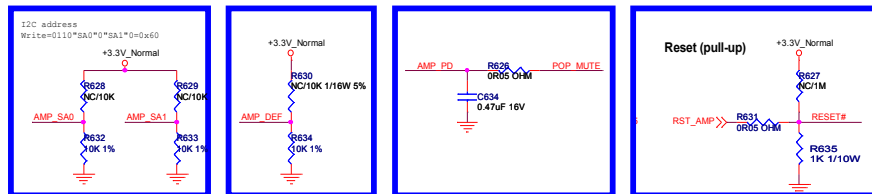
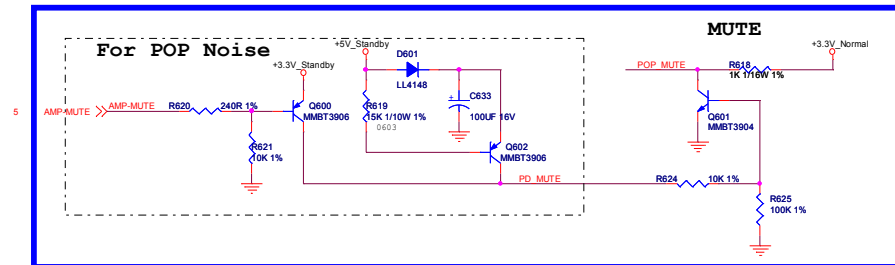
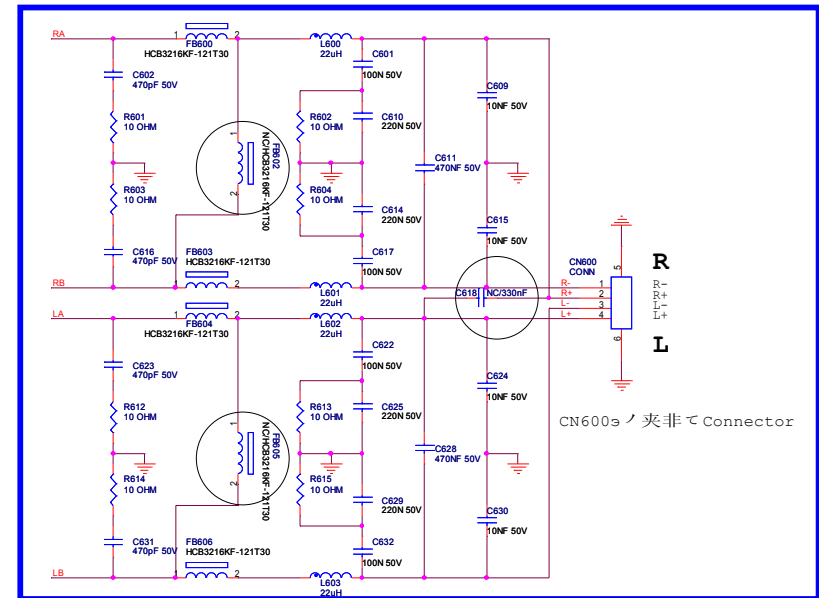
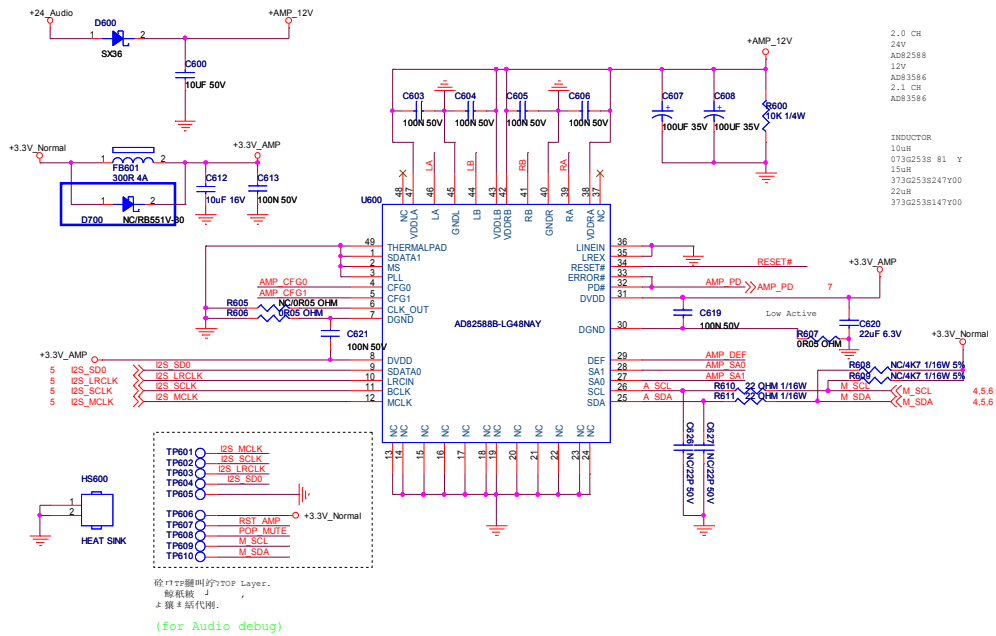


AGC RC Filter & I2C



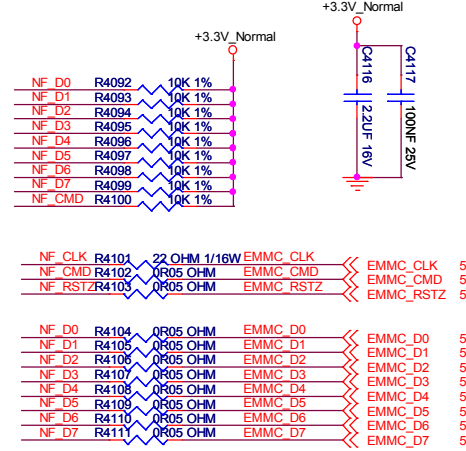
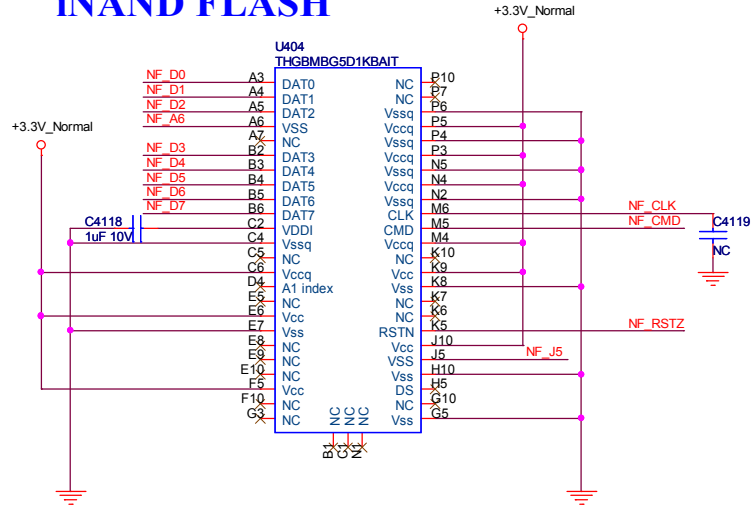
DIF IN&OUT





TPV (Top Victory Electronics Co., Ltd.)	OEM MODEL	Size	C
振興企画課	TPV MODEL	Rev	A
Key Component	12. AUDIO AMPLIFIER	PCB NAME	
Date	Thursday, October 09, 2014	Sheet	12 of 13

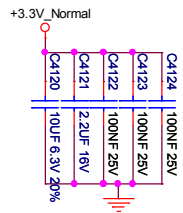
iNAND FLASH



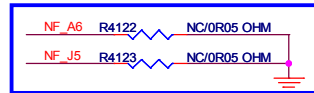
E-MMC Layout 結構圖：

NF_D0 (A3)-A3
NF_D1 (A4)-A4
NF_D2 (A5)-A5
NF_D3 (B2)-B2, A2
NF_D4 (B3)-B3, C3, D2, D1
NF_D5 (B4)-B4, D4, E3, F2, F1
NF_D6 (B5)-B5
NF_D7 (B6)-B6, A7
VDDI (C2)-C2, C1

NF_CLK (M6)-M6, N7, P8
NF_CMD (M5)-M5, M8, N9, P9
NF_RSTZ (K5)-K5, M9, N10, P10



E-MMC (Ver4.5 Application): R4122 and R4123
E-MMC (Ver5.0 Application): R4122 and R4123

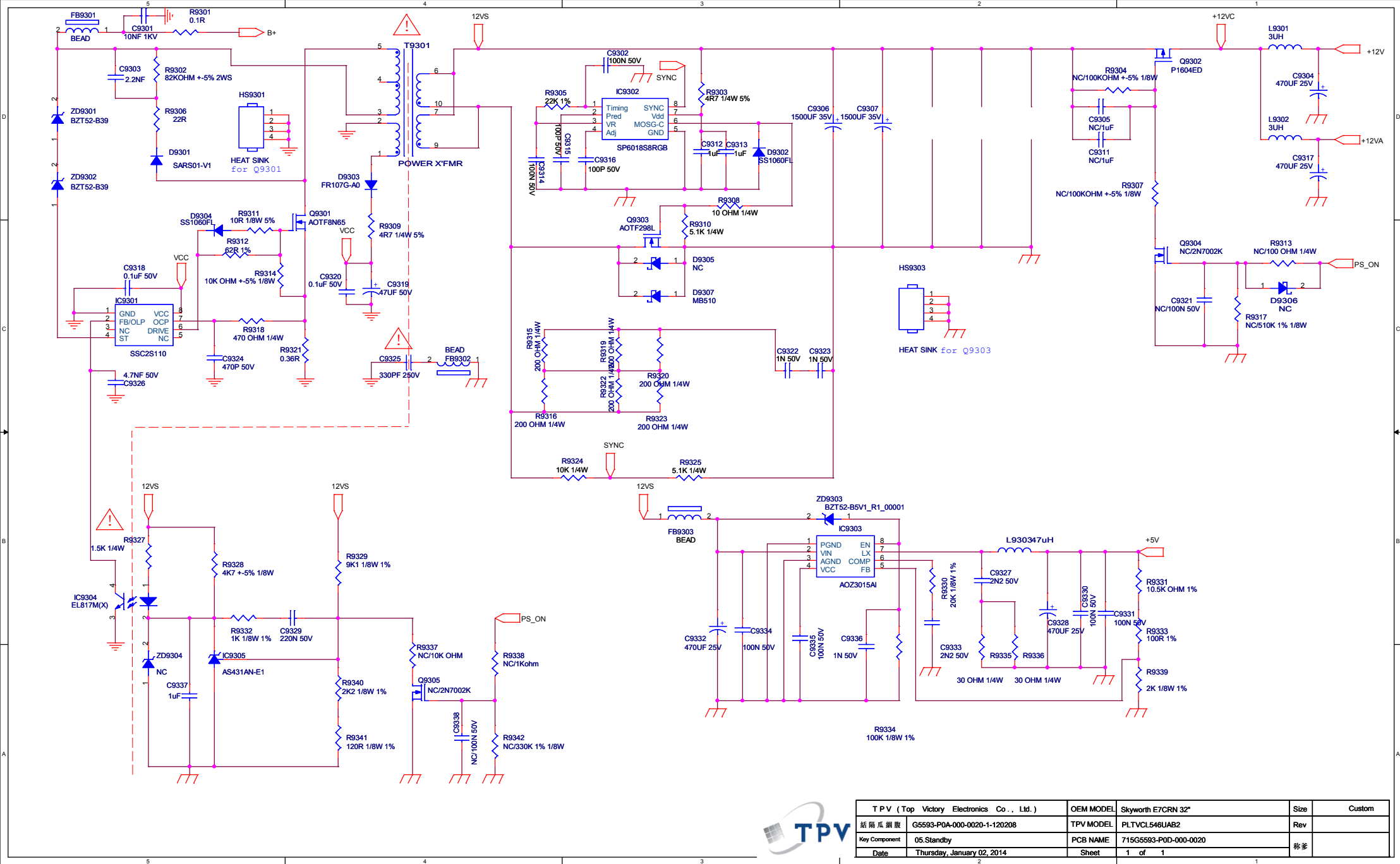


TPV (Top Victory Electronics Co., Ltd.)	OEM MODEL		Size	B
蘇隔瓜網廠	TPV MODEL		Rev	A
Key Component	13. NAND FLASH	PCB NAME		称爹 <称爹>
Date	Thursday, October 09, 2014	Sheet	13 of 13	

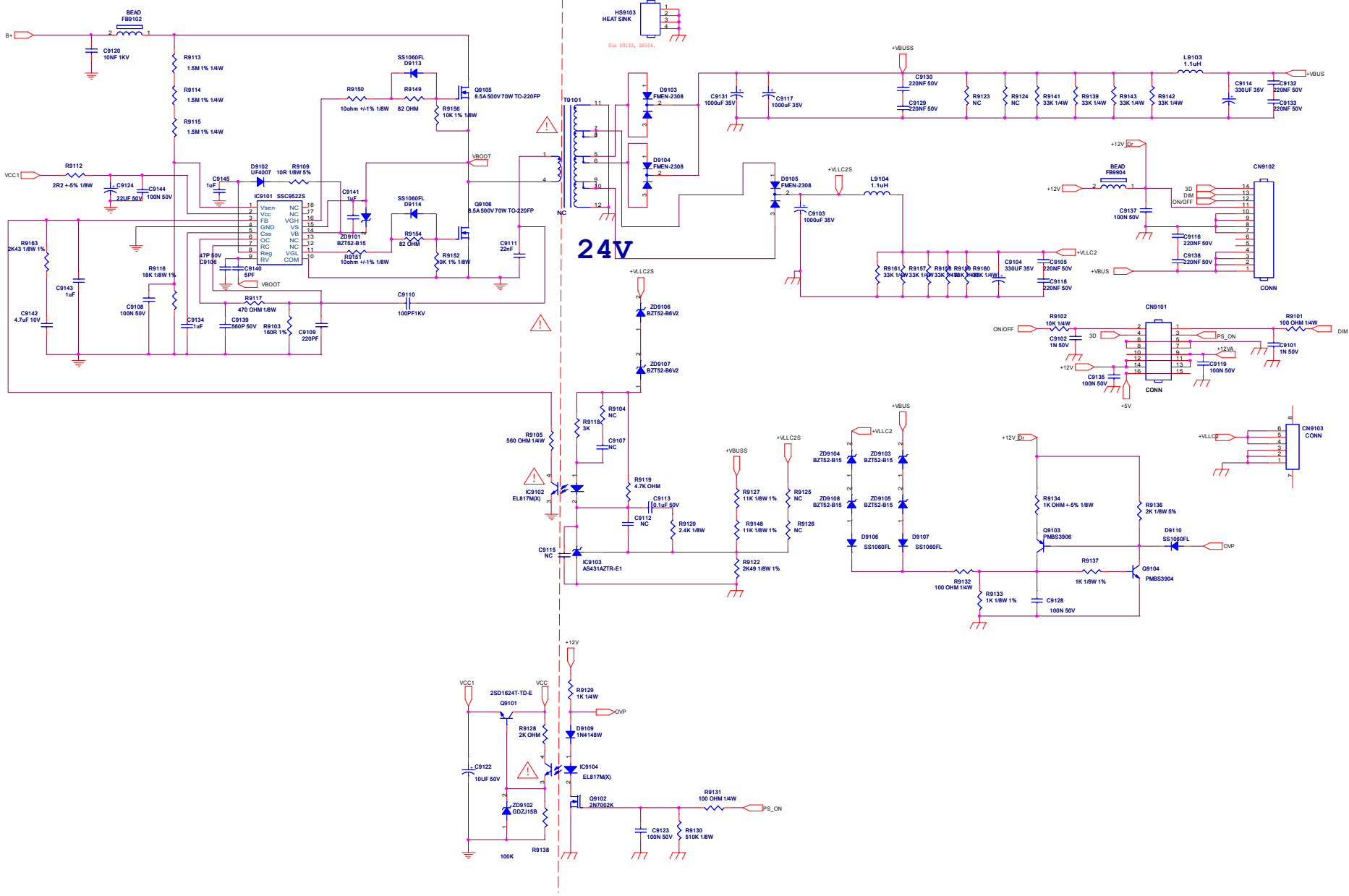
J9901~J9903



T P V (Top Victory Electronics Co., Ltd.)		OEM MODEL	Skyworth E7CRN 32"	Size	A
結 隔 瓜 網 膠	G5593-P0A-000-0020-1-120208	TPV MODEL	PLTVCL546UAB2	Rev	
Key Component	01.AC input	PCB NAME	715G5593-P0D-000-0020	称爹	
Date	Tuesday, July 15, 2014	Sheet	1 of 5		



T P V (Top Victory Electronics Co., Ltd.)	OEM MODEL	Skyworth E7CRN 32"	Size	Custom
話筒瓜網膜	G5593-POA-000-0020-1-120208	TPV MODEL	PLTVCL548UAB2	Rev
Key Component	05.Standby	PCB NAME	715G5593-POD-000-0020	称審
Date	Thursday, January 02, 2014	Sheet	1 of 1	



TPV (Top Victory Electronics Co., Ltd.)		OEM MODEL	Skyworth E7CRN 32"	Size	Custom
經銷商名稱		TPV MODEL	PLTVCL54EJAB2	Rev	
Key Component		PCB NAME	716G5663-POD-000-0020	Rev	
Date		Tuesday, July 15, 2014	Sheet	3 of 5	1

24V

Vsin

FB9801 BEAD

L9801

220uH

C9801 1uF 450V

R9805 20K 1/4W

R9814 2K 1/8W

LD7591T IC9801

VCC1

C9806 100N 50V

C9805 10uF/50V

R9812 36K 1/8W

R9813 10K 1/8W

C9809 47N 50V

C9810 0.47uF 50V

R9810 1K 1/8W

C9807 220pF 50V

R9802 10 OHM 1/8W

D9803 RB160M

33R 1/8W 5% R9803

10K 1/8W R9806

0.1R R9808

Q9801 TK18A60V

R9804 1M 1% 1/4W

R9807 1M 1% 1/4W

R9809 1M 1% 1/4W

R9811 19K1 +-1% 1/8W

C9808 47P 50V

C9802 10NF 1KV

FB9803 BEAD

D9802 FMNS-1106S

C9817 100PF

FB9802 BEAD

C9811 68UF 450V

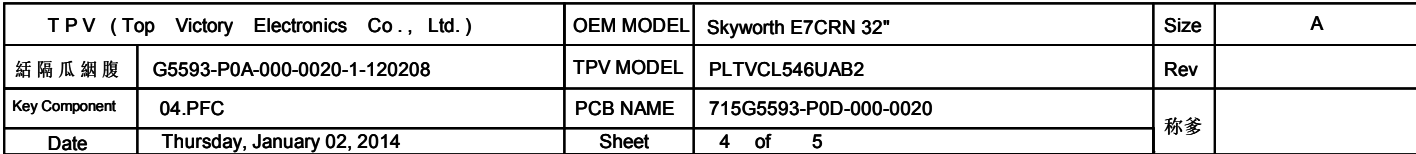
C9812 68UF 450V

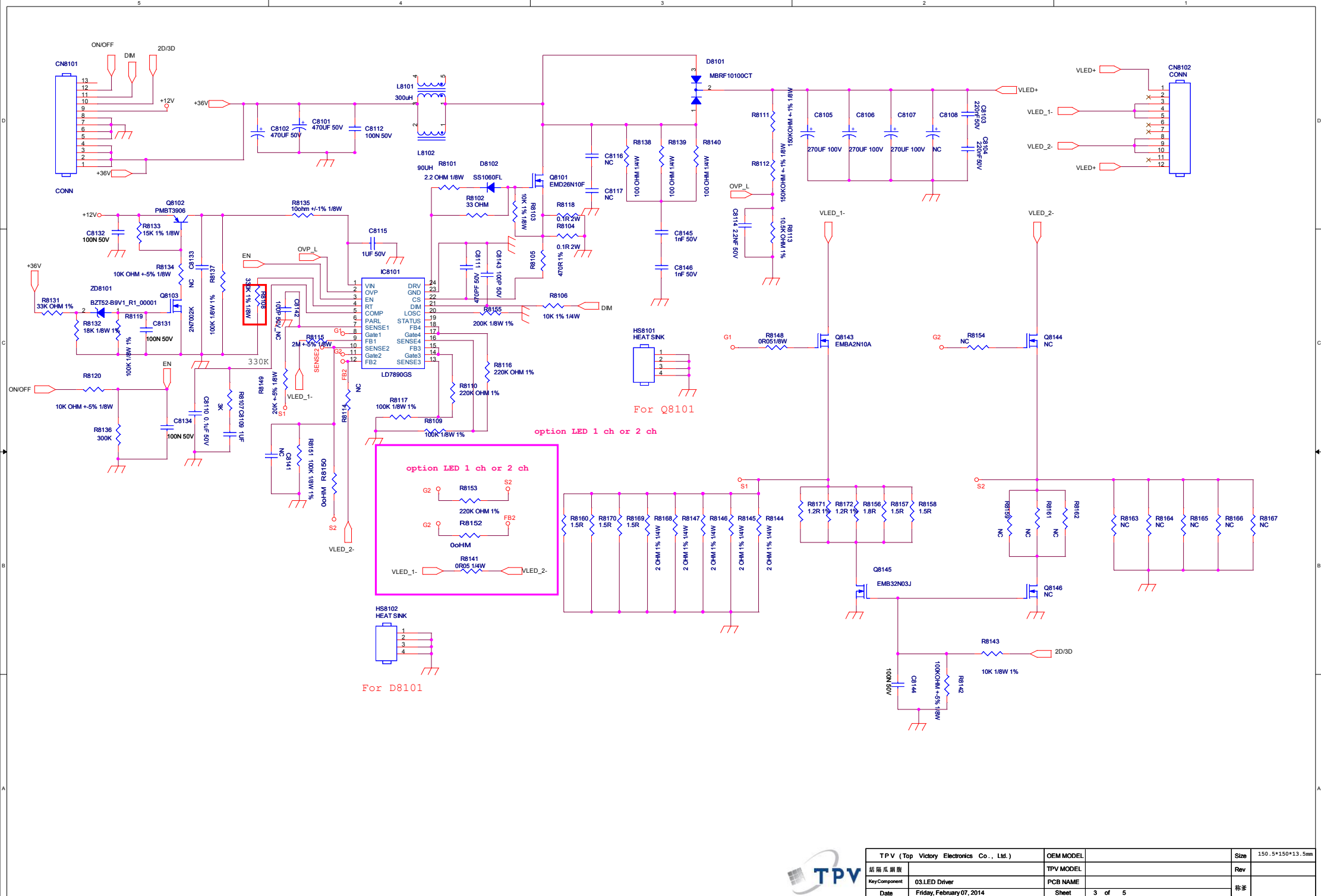
B+

J9801~J9803
JR9801~JR9802

HS9801

For Q9801
HEAT SINK





TPV (Top Victory Electronics Co., Ltd.)	OEM MODEL		Size	150.5*150*13.5mm
結構圖	TPV MODEL		Rev	
Key Component	03 LED Driver			
Date	Friday, February 07, 2014	Sheet	3 of 5	標參

CONTENTS

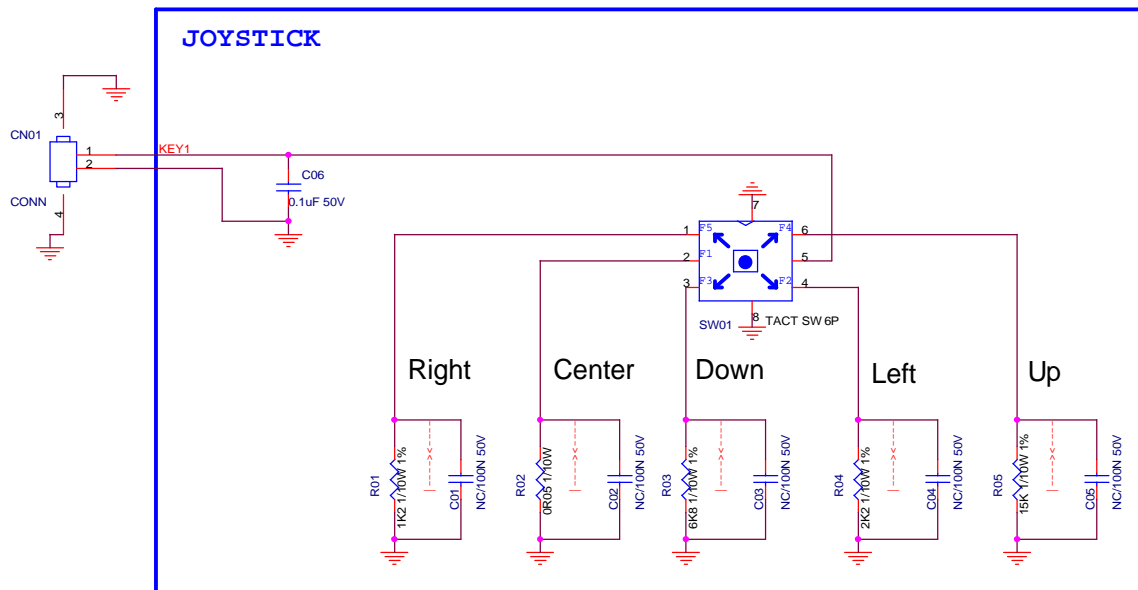
SCHEMATIC NAME	SHEET
01.COVER	1
02.KEY	2

REVISION HISTORY

Date	Author	Ver	Reviser reason	FN
2014/5/13	William Ou	A	Drawing released.	
2014/5/28	William Ou	B	PCB Demension change to 22mmX29.5mm to meet D2P5 panel.	



T P V (Top Victory Electronics Co. , Ltd.)		OEM MODEL	2K15 PHILIPS6000 KEY CONTROL BOARD	Size	Custom
線路圖編	G7088-B-PHILIPS6000	TPV MODEL		Rev	1
Key Component	01. COVER	PCB NAME	715G7088-K0B	備註	XX
Date	Wednesday, May 28, 2014	Sheet	1 of 2		



Direction	switch	Key function	Resistance	Voltage
Center	2-5 short	Menu	0R	0V
Right	1-5 short	CH+	1K2	0.5V
Left	4-5 short	CH-	2K2	0.81V
Down	3-5 short	VOL-	6K8	1.65V
Up	6-5 short	VOL+	15K	2.27V
		No function		3.3V

Joystick circuit diagram

	pin1	pin2	pin3	pin4	pin5	pin6
F1		○			○	
F2				○	○	
F3			○		○	
F4					○	○
F5	○				○	



TPV (Top Victory Electronics Co., Ltd.)		OEM MODEL	2K15 PHILIPS6000 KEY CONTROL BOARD		Size	B
線路圖編	G7088-B-PHILIPS5000	TPV MODEL			Rev	1
Key Component	02. KEY	PCB NAME	715G7088-K0B		備註	XX
Date	Monday, September 01, 2014	Sheet	2 of 2			

CONTENTS

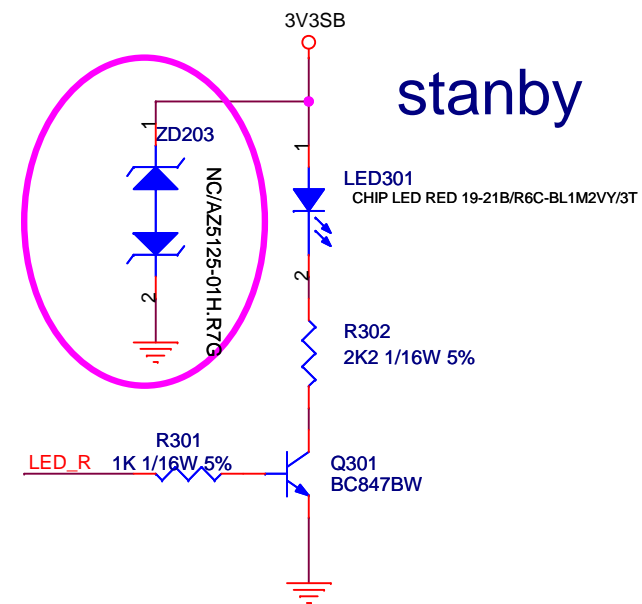
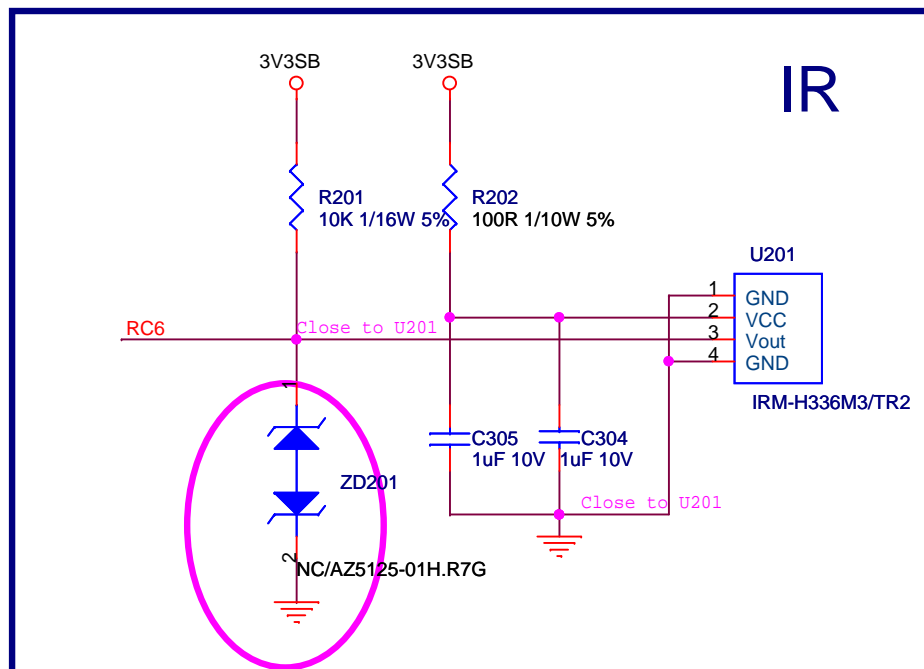
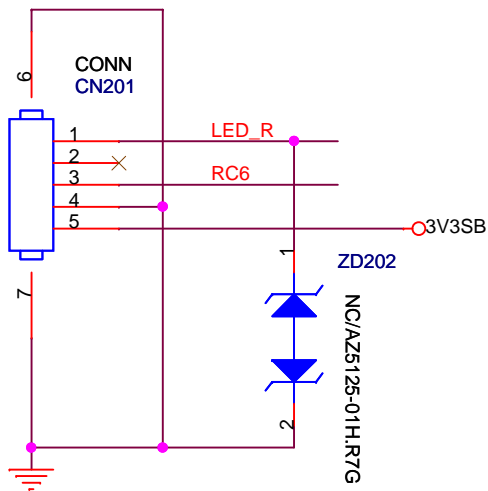
REVISION HISTORY

[illegible]

Date	Author	Ver	Reviser reason	FN
2014/04/23	Gene	A	First release	
2014/06/26	Gene	B	ME DXF update	
2014/10/21	Chiu	D	ME DXF update, LED position modify (ESD reason)	



TPV (Top Victory Electronics Co., Ltd.)		OEM MODEL	PHILIPS 6500 IR board	Size	A
線路圖編號	GXXXX-1-XXPFLXXX-120618	TPV MODEL	?	Rev	0
Key Component	01. COVER	PCB NAME	715Gxxxx_R0A_000_0040	備註	<備註>
Date	Friday, October 24, 2014	Sheet	1 of 2		



TPV (Top Victory Electronics Co., Ltd.)		OEM MODEL	PHILIPS 6500 IR board		Size	A
線路圖編號	G5251-1-32PFL3507-111005	TPV MODEL			Rev	0
Key Component	02. LED&IR&3D&Light sensor	PCB NAME	715Gxxxx-R0A-000-0040		備註	<備註>
Date	Tuesday, November 11, 2014	Sheet	2 of 2			