

工厂模式调整：菜单+1999+返回

```
Brand : PHILIPS
Main-MCU Ver : V2.00
Bootloader Ver : V0.01
Sub-MCU Ver : V0.01
EEPROM Ver : V0.01
Date : Dec 9 2015
ModelName : 32PHF3601/3611
Scaler : MSD8314K2_XZ
Panel Type : LVB315WHBN0AJ42F0X
输入源 : HDMI
Auto Color : GO
W/B Pattern : 关
V-COM : 关
SSC Enable : 开
LVDS Span : 35.0 KHz
LVDS Step : 2.00 %
ADC : YPbPr(SD)
Gain : R 4431 G 4370 B 4452
Offset : R 2048 G 256 B 2048
ColorTemp : 冷色
Scaler
Gain : R 115 G 128 B 135
Offset : R 1024 G 1024 B 1024
Burn in : 开
EEPROM Init
Back LIT Time : 00000.0Hrs
Total Time : 00000.0Hrs
BackLight : 100
Language : English
System Reset
Exit
```

项目名称	功能说明	备注
Brand	机种品牌	不可调整
Main-MCU Ver	主软体版本	不可调整
Bootloader Ver	Boot 软体版本	不可调整
Sub-MCU Ver		不可调整
EEPROM Ver		不可调整
Date	软体发布日期	不可调整
Model Name	机器型号	不可调整
Scaler	主芯片型号	不可调整
Panel Type	液晶屏型号	不可调整
输入源	当前信源	可选择信源
Auto Color		
W/B Pattern	白平衡调整	不建议调整
V-COM Panel	门电压调整	不建议调整
SSC Enable	展频调整	不建议调整
LVDS Span	展频调整	不建议调整
LVDS Step	展频调整	不建议调整
ADC	ADC 调整	免调
Gain		
Offset		
Color Temper	色温选择	Cool/Normal/Warm
Scaler.		不建议调整
Gain		
Offset		
Burn In	拷机模式	On/off
EEPROM Init		
Back LIT Time	屏使用时间	
Total Time	机器总使用时间	
Backlight	背光强度	
Language	语言	
System Reset	复位	
Exit	退出工厂模式	

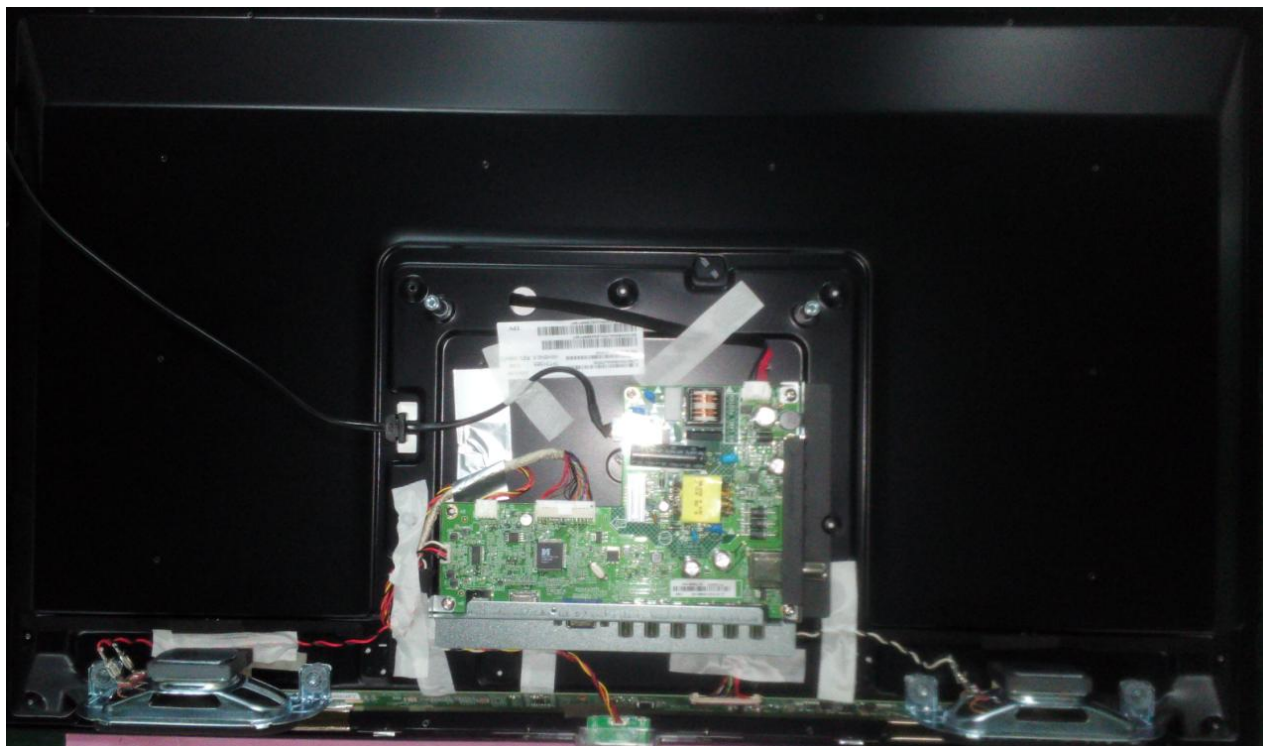
1. 正视图



2. 后视图



3、内部结构图



冠捷科技

用心專注 領航視界

MSD8314 軟體升級

CTA T3201M MSD8314 软体升级方法

- 1.开机状态下MSD8314 软体升级
- 2.TV Standby下MSD8314 软体升级
- 3.用tool升级MSD8314 软体

一、开机状态下 MSD8314软体升级

- 1.1 MSD8314平台会自动生成如下命名格式的软体（不可随意修改软体名字）：

AOC_机种名_CN_平台_LV03151A058AEC2A0X_SVN3934_版本_日期_Checksum.bin;

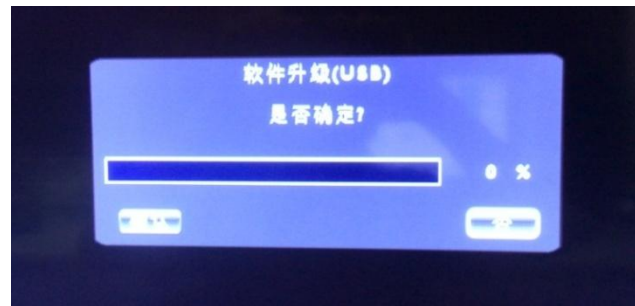
例子： AOC_T3201M_CN_MST8314Z2_XZ_LV03151A058AEC2A0X_SVN3934_V0.09_20140918_602F.bin

- 1.2 将对应机种名的软体（如1.1格式命名的）拷贝至U盘；

- 1.3 在TV开机状态，且非USB source下，将U盘插接上；

- 1.4 TV会弹出“软体升级(USB)”提示框，选择“确认”可以对MSD8314软体进行升级，选择“否”取消对软体升级。升级过程中，TV的灯会在无灯、蓝灯间闪动，且提示框进度条也逐渐升级到100%；

- 1.5 软体升级后TV会自动重启。



二、TV Standby下MSD8314 软体升级

2.1 MSD8314平台会自动生成如下命名格式的软体（不可随意修改软体名字）：

AOC_机种名_CN_平台_LV03151A058AEC2A0X_SVN3934_版本_日期_Checksum.bin;

例子：AOC_T3201M_CN_MST8314Z2_XZ_LV03151A058AEC2A0X_SVN3934_V0.09_20140918_602F.bin

2.2 将对应机种名的软体（如2.1格式命名的）拷贝至U盘；

2.3 在TV AC off状态下将U盘插接上；

2.4 然后AC on，TV自动进行“MSD8314”软体升级，升级过程中，TV的灯会在无灯、蓝灯间闪动；

2.5 “MSD8314”软体升级后TV会自动重启，完成软体升级。

三、用tool升级MSD8314 软体

3.1 将MSD8314软体命名为：MERGE.bin;

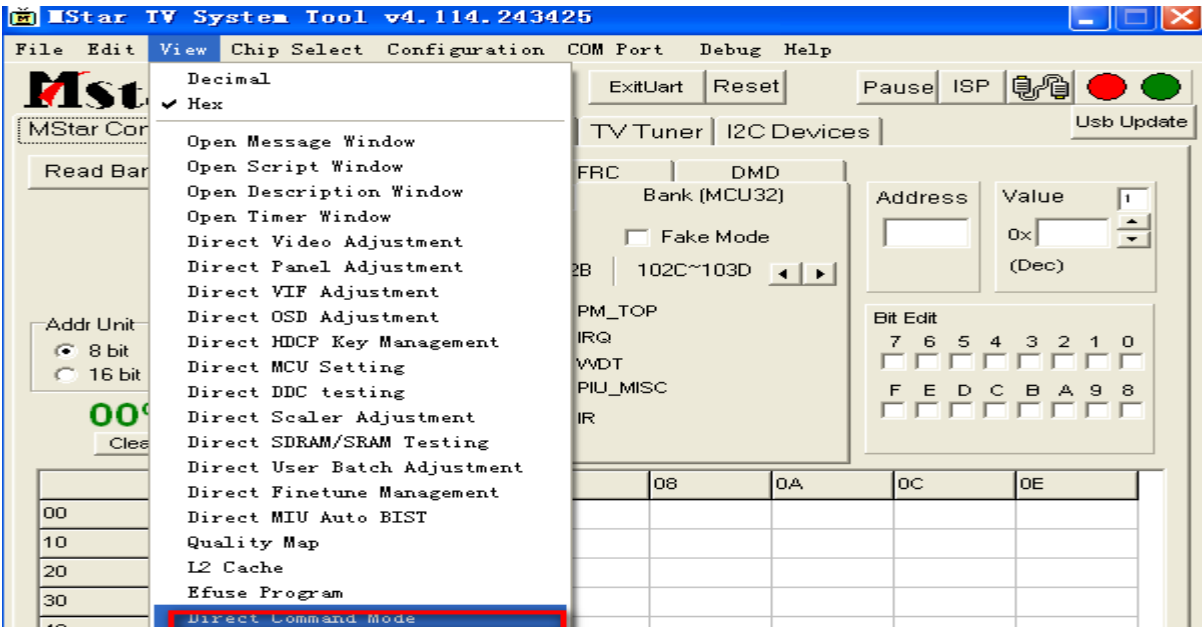
3.2 将重命名后的软体拷贝至U盘;

3.3 在TV开机状态，且非USB source下，将U盘插接上，
将串口设置为开，连接上debug tool;

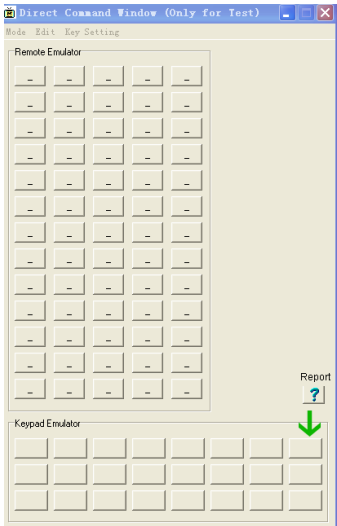
3.4 打开“MSTV_Tool”工具，选择“view->Direct
Command Mode ”（如图一），然后点击如图二 箭头所示按钮，就可以开始升级软体（如图二）；

3.5软体升级后TV会自动重启，完成软体升级。

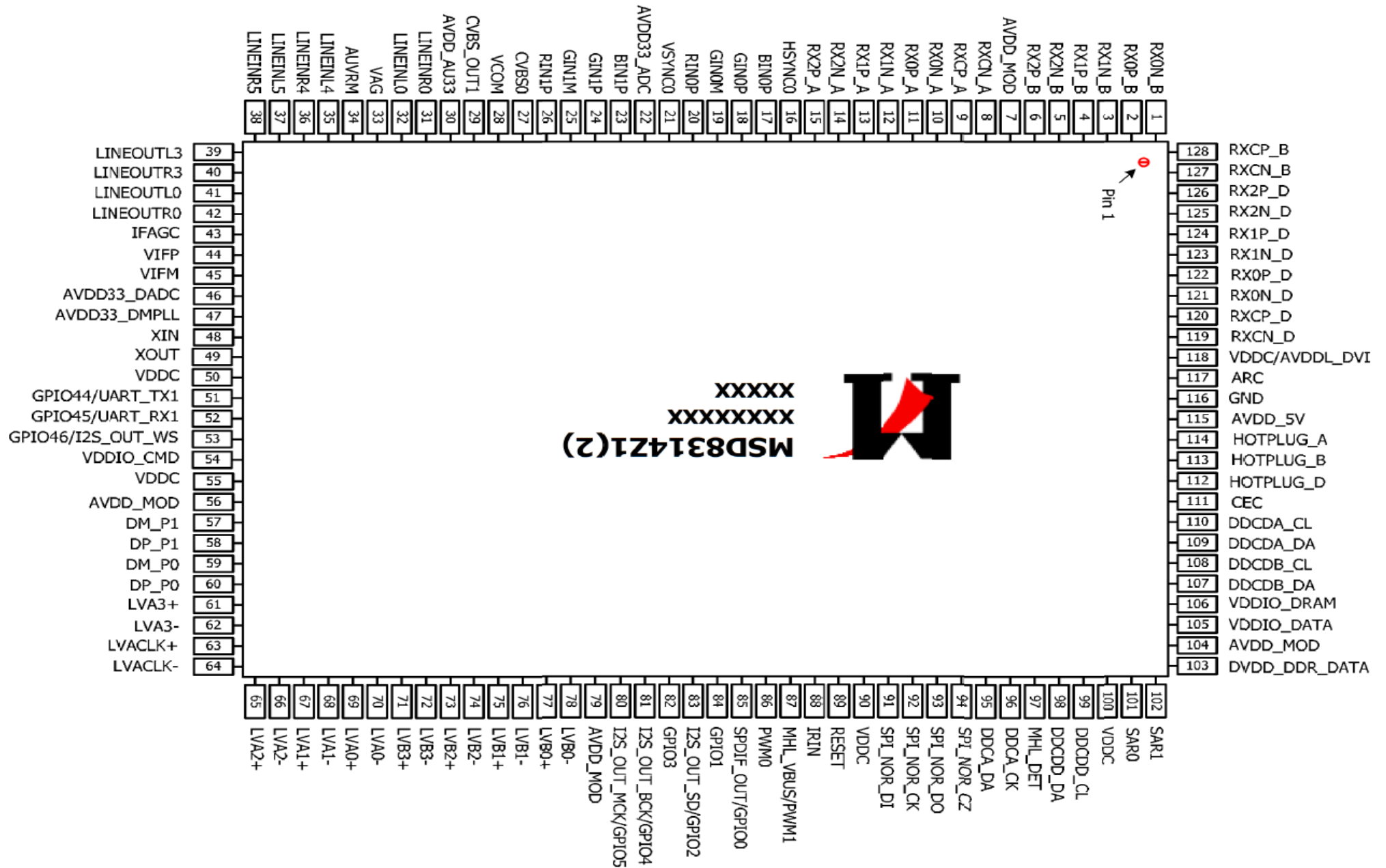
图一



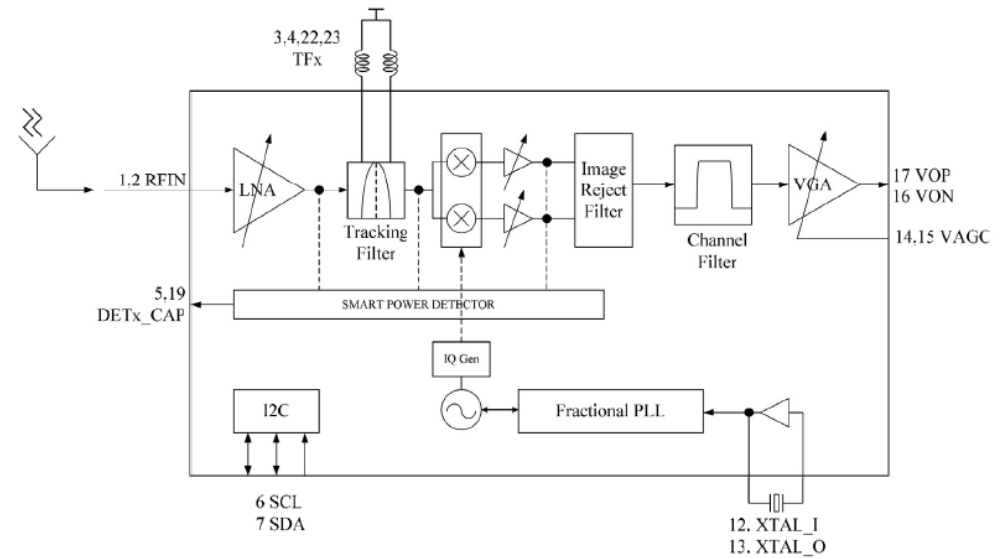
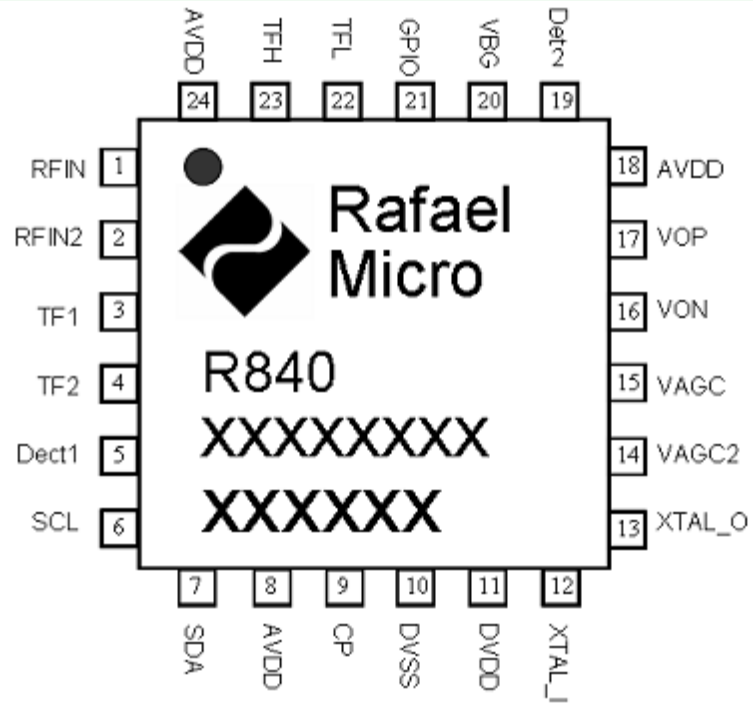
图二



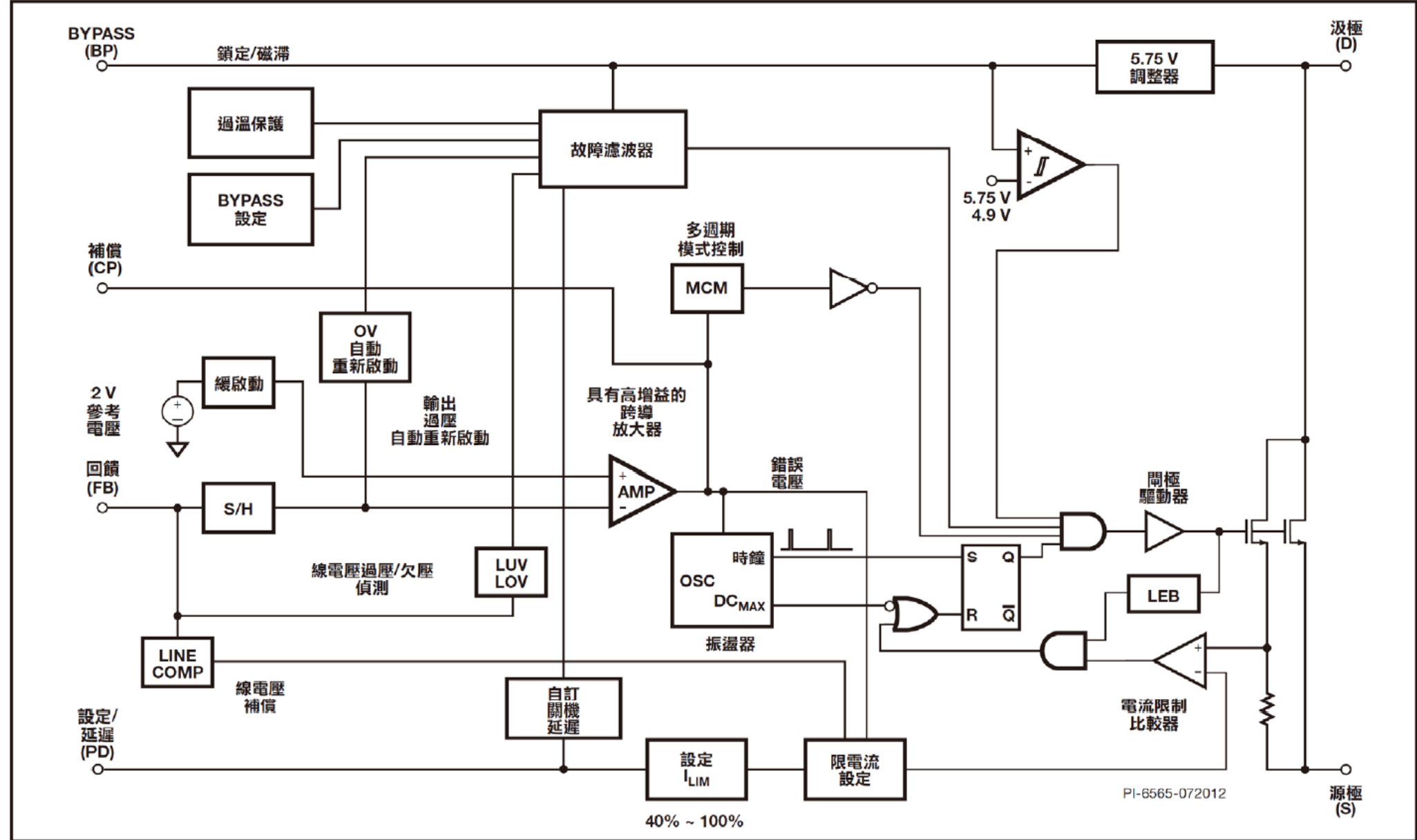
1. SCALER MSD8314Z2-XZ



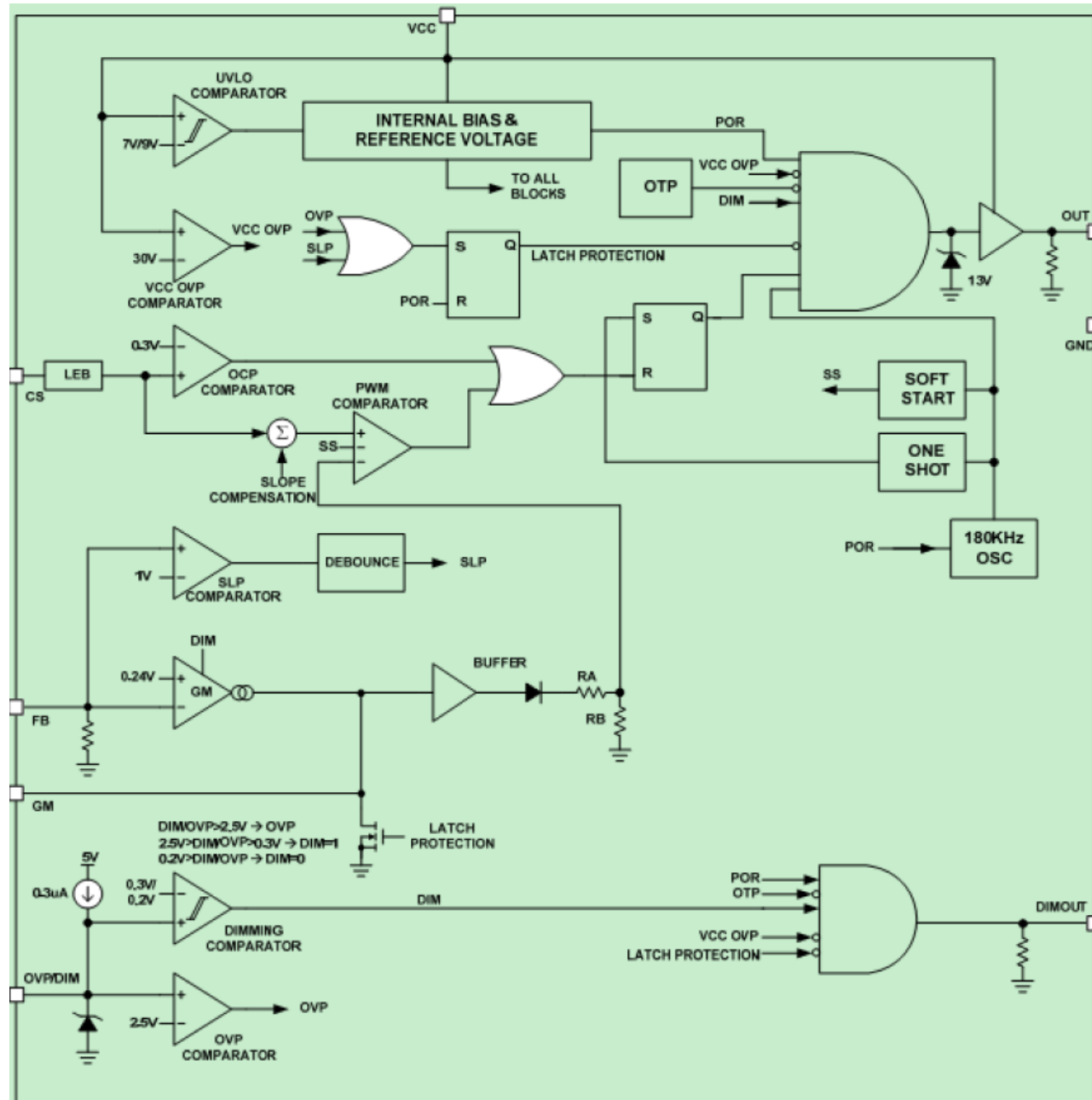
2. Tuner R840



3. AC/DC LNK6776V



4. DRIVER PF7903BS



点位	物料	物料描述	组件数量	单位
	040G 58162435A	MANUAL P/N LABEL	1	PCS
	052G 1186	SMALL TAPE	10	CM
	052G 2191 A	TAPE_OTHER(PET,PAPER,SECURITY,ETC...)	12	CM
	0M1G 130 6120	SCREW M3 6	2	PCS
	0M1G1030 6 47 CR3	SCREW M3 6	10	PCS
	0M1G1030 6120	SCREW M3 6	4	PCS
	0Q1G 940 18 47 CR3	screw	4	PCS
RFB01	317GARFM006CHH	RF MODULE CBIP-X	1	PCS
SP01	378G0060498CAB	8 OHM 6W 132*45*39 0 UNIT	2	PCS
ECN9901	389G214A15NCX500X5	AC POWER CORD 1500/140mm for China	1	PCS
ECN9901	389G214A15NYH500X5	AC POWER CORD 1500/140mm for China	1	PCS
E39201	392GB1JA1A3D2C	BATTERY 1.5V 2P LR03(KH)2S/G	1	PAA
ECN601	395G801404DD18	HARNESS 4P-B&R+B&W 320/400mm	1	PCS
ECN601	395G801404FD18	HARNESS 4P-B&R+B&W 320/400mm	1	PCS
ECN403	395G801830LC71	LVDS CABLE 30P-30P 400mm	1	PCS
ECN403	395G801830RC71	LVDS CABLE 30P-30P 400mm	1	PCS
ECN401	395GH20005RT013000	HARNESS 5P-5P 320MM	1	PCS
ECN401	395GH20005XT013000	HARNESS 5P-5P 320MM	1	PCS
E09801	398GR08BCPHN0001C	REMOTE PHILIPS RL134B chinese	1	PCS
	708TJ9018130WPZ1CH	PHILIPS 40(896 CH)	1	PCS
	J07G011508302C00MY	WOOD PALLET	0.031	PCS
	J44G6002 S 84	PAPER PLATE	0.156	PCS
	J45G 77 6	PE PACKING	0.770	M
	Q44G9003210	CORNER PAPER	0.125	PCS
	Q50G 4 10	TIE (Y1900221)	37	CM
	Q52G1301 9	BIG TAPE FOR PHILIPS	194	CM
	X50G500500600000JY	TIE	0.500	PCS
E750	750TBV315B85BDN000	LCD TPT315B5-WHBN0.K S8945B BJ TPV	1	PCS
	756TXFCC01D056010X	MCU ASSY	1	PCS
U402	056G2233 34	FLASH MX25L3206EM2I-12G 32Mb SOP-8	1	PCS
SCCP-U402	100TP1VK017D1X	PHP 32PFL3601/T3 FLASH V2.00 0A8A	1	PCS
	CCPFFSADXCL	MAIN BOARD+POWER BOARD	1	PCS
	Z40G0002ALL01A	OTHER LABEL	1	PCS
CN401	033G3802 5B YH L	WAFER 2.0mm 5P R/A 11.98mm 7.8mm	1	PCS
CN9901	033G8029 3A H	CONN 3.96mm 3(2N)P R/A 11.88mm 9.5mm	1	PCS
C9901	063G107M47410M	CAP X2 470NF 20% 275V R46KI3470HAP1M	1	PCS
L9901	073G 174192 H	LINE FILTER 30MH MIN LCL-12012 HA	1	PCS
L9901	073G 174192 X	LINE FILTER 30MH MIN ET20 0.8A	1	PCS
L8101	073G 253214 H	CHOKE COIL 47UH 10% L470R HA	1	PCS
L8101	073G 253214 X	CHOKE COIL 47UH 10% ,HF	1	PCS
SW405	077G602S 3A HJ	TACT SW 4P 5.85 200g TSDBYC2202	1	PCS
SW404	077G602S 3A HJ	TACT SW 4P 5.85 200g TSDBYC2202	1	PCS
SW402	077G602S 3A HJ	TACT SW 4P 5.85 200g TSDBYC2202	1	PCS
SW401	077G602S 3A HJ	TACT SW 4P 5.85 200g TSDBYC2202	1	PCS
SW403	077G602S 3A HJ	TACT SW 4P 5.85 200g TSDBYC2202	1	PCS
CN106	088G352F6B3ACL	USB A TYPE R/A 6P BLACK H=8.4	1	PCS
CN105	088G353GFF1AXH	D-SUB CONN 15P BLUE - R/A 10	1	PCS
D8108	093G 60537	SCHOTTKY SB560-E 5A 60V DO-201AD	1	PCS
D9102	093G 60924	SCHOTTKY SR510-22 5A 100V DO-201AD	1	PCS
D9101	093G 60924	SCHOTTKY SR510-22 5A 100V DO-201AD	1	PCS

D9104	093G 60924	SCHOTTKY SR510-22 5A 100V DO-201AD	1 PCS
D9105	093G 60953	SCHOTTKY FR107G-A0 1A 1000V DO-41	1 PCS
D9103	093G 60953	SCHOTTKY FR107G-A0 1A 1000V DO-41	1 PCS
CN601	311GW200A04AAL	WAFER 2.0mm 4P V/T B2009W04VTAB	1 PCS
CN8103	311GW200A06ABL	CONN 2.0mm 6P R/A B2009W06HTK0 16mm	1 PCS
CN8103	311GW200A06ABX	WAFER 2.0mm 6P	1 PCS
CN403	311GW200C30ABL	WAFER 2.0mm 2*15P	1 PCS
IC9101	356G0379012601	AC/DC LNK6776V eDIP-12B	1 PCS
NR9901	361G0058309LAW004A	NTCR 3R 15% 2.4W SCK10034LJY501	1 PCS
C9901	363G107M474AUM0001	CAP X2 0.47uF 20% 305V 18x12.5x9mm MPX2	1 PCS
C9101	367G215X560PHZ000S	EC 56uF 20% 450V 12.5*40 2000 hr 580mA	1 PCS
C9101	367G215X560PKZ000S	EC 56UF 20% 450V 12.5*40 2000 hr 580mA	1 PCS
T9101	380GL32P132H00	X'FMR 580uH 10% 15uH P2311 BCK-12320-H	1 PCS
CN101	388G510G0040HC	RF RF connector 5P 1*1 -- 14.6mm	1 PCS
BD9101	393G0050460A05	BRIDGE GBL08-07 X0 4A 800V GBL	1 PCS
HIC91	Q90G611900900000HG	HEAT SINK	1 PCS
CN102	388G078G137ACL0001	RCA JACK 6P 1*3 Y/W/R --	1 PCS
CN103	388G078G137ACL0001	RCA JACK 6P 1*3 Y/W/R --	1 PCS
	709T66190ZM001	COMSUMPTIVE ASSY	1 PCS
	Q55G 23524 HF	无卤助焊剂	1 G
	Q49G 51100	cleaner	0.880 G
	Q55G50SW3AS0HF	Solder Wire	1 G
	Q55G 100655	Sn-Cu Solder	3.394 G
	Q51G 6 4509	GLUE_RTV	0.480 ML
	051G 200 1	OIL FOR DISAPPEAR	0.028 G
	052G 2191 A	TAPE_OTHER(PET,PAPER,SECURITY,ETC...)	0.200 CM
	055G 23524	WELDING FLUX WITHOUT PB	3.760 G
	AICCPFFSADXCL	MAIN BOARD+POWER BOARD FOR AI	1 PCS
	709T66190ZA001	COMSUMPTIVE ASSY	1 PCS
	052G 2191 A	TAPE_OTHER(PET,PAPER,SECURITY,ETC...)	0.030 CM
	SMTCCPFFSADXCL	MAIN BOARD+POWER BOARD FOR SMT	1 PCS
Q403	057G 417511	MMBT3904	1 PCS
U402	056G2233 34	FLASH MX25L3206EM2I-12G 32Mb SOP-8	1 PCS
R410	061G0402680 JT	RST CHIP 68R 1/16W 5% TZAI YUAN	1 PCS
R419	061G0402680 JT	RST CHIP 68R 1/16W 5% TZAI YUAN	1 PCS
R419	061G0402680 JY	RST CHIPR 68 OHM +-5% 1/16W YAGEO	1 PCS
R410	061G0402680 JY	RST CHIPR 68 OHM +-5% 1/16W YAGEO	1 PCS
R8109	061G0805100 JT	RST CHIP 10R 1/8W 5% TZAI YUAN	1 PCS
C409	065G040210232K E	NO-SUGGEST 0402 1000pF K 50V X7R	1 PCS
C406	065G040210232K E	NO-SUGGEST 0402 1000pF K 50V X7R	1 PCS
C441	065G040210232K E	NO-SUGGEST 0402 1000pF K 50V X7R	1 PCS
C440	065G040210232K E	NO-SUGGEST 0402 1000pF K 50V X7R	1 PCS
C445	065G040210232K E	NO-SUGGEST 0402 1000pF K 50V X7R	1 PCS
C446	065G040210232K E	NO-SUGGEST 0402 1000pF K 50V X7R	1 PCS
C409	065G040210232K Y	CAP 0402 1NF 10% 50V X7R CC0402KRX7R9BB	1 PCS
C446	065G040210232K Y	CAP 0402 1NF 10% 50V X7R CC0402KRX7R9BB	1 PCS
C440	065G040210232K Y	CAP 0402 1NF 10% 50V X7R CC0402KRX7R9BB	1 PCS
C406	065G040210232K Y	CAP 0402 1NF 10% 50V X7R CC0402KRX7R9BB	1 PCS
C445	065G040210232K Y	CAP 0402 1NF 10% 50V X7R CC0402KRX7R9BB	1 PCS
C441	065G040210232K Y	CAP 0402 1NF 10% 50V X7R CC0402KRX7R9BB	1 PCS
C449	065G040210412K E	CAP 0402 100NF 10% 16V X7R	1 PCS

[illegible]

C704	065G040222031J	E	CAP 0402 22PF 5% 50V NP0 C0402C0G220J50	1 PCS
C704	065G040222031J	T	CAP 0402 22pF 5% 50V NP0 UMK105 CG220JV	1 PCS
C101	065G040247131J	E	CAP 0402 470PF 5% 50V NP0	1 PCS
C101	065G040247131J	Y	0402 470pF J 50V NP0	1 PCS
	709T66190ZS001		COMSUMPTIVE ASSY	1 PCS
	Q49G01WB1JL0HF000		(Water-based Cleaning Agent	1.605 ML
	055G 100610		Solder Paste	0.920 G
	Q52G1701 7	XW	MESH PRINTTING_PAPER	2.550 CM
	Q05G6054 1		SHEET	0.070 PCS
	052G 2191 A		TAPE_OTHER(PET,PAPER,SECURITY,ETC...)	0.280 CM
	Q55G 100622		TIN STICK(SAC0507)	0.002 G
FB420	061G0603000 JF		RST CHIPR MAX 0R05 1/10W FENGHUA	1 PCS
C106	065G040268232K	A	CAP 0402 6.8NF 10% 50V X7R	1 PCS
FB414	061G0603000 JF		RST CHIPR MAX 0R05 1/10W FENGHUA	1 PCS
FB416	061G0603000 JF		RST CHIPR MAX 0R05 1/10W FENGHUA	1 PCS
R721	061G04021001FT		RST CHIP R 1Kohm 1/16W +/-1%	1 PCS
FB412	061G0603000 JF		RST CHIPR MAX 0R05 1/10W FENGHUA	1 PCS
R148	061G0402151 JF		RST CHIPR 150 OHM +-5% 1/16W FENGHUA	1 PCS
FB415	061G0603000 JF		RST CHIPR MAX 0R05 1/10W FENGHUA	1 PCS
C639	065G040210232K	A	CAP 0402 1NF 10% 50V X7R	1 PCS
FB419	061G0603000 JF		RST CHIPR MAX 0R05 1/10W FENGHUA	1 PCS
R414	061G04021001FT		RST CHIP R 1Kohm 1/16W +/-1%	1 PCS
R8113	061G0603102 JT		RST CHIP 1K 1/10W 5% TZAI YUAN	1 PCS
C404	065G040210232K	A	CAP 0402 1NF 10% 50V X7R	1 PCS
R412	061G04022701FY		RST CHIP 2.7K 1/16W 1%	1 PCS
C712	065G060310512K	T	CAP 0603 1UF 10% 16V X7R EMK107B7105KA	1 PCS
R105	061G0402221 JF		RST CHIPR 220 OHM £«-5£¥ 1/16W FENGHUA	1 PCS
L402	371G059Z102M00		CHIP BEAD 0603 1000ohm 25% MGGB1608M102	1 PCS
C135	065G040256031J	Y	CAP CHIP 0402 56pF 50V NP0 +/-5%	1 PCS
R415	061G0402181 JF		RST CHIP 180R 1/16W 5% FENGHUA	1 PCS
FB409	071G 56K121 TA		HIP BEAD 120R/6000mA HCB2012KF-121T60	1 PCS
R515	061G04024998FT		RST 0402 4.99R 1% 1/16W SMD04024R99F	1 PCS
C121	365G040218931C000F		CAP 0402 1.8PF 0.25pF 50V NP0 0402CG1R8	1 PCS
R521	061G04024998FT		RST 0402 4.99R 1% 1/16W SMD04024R99F	1 PCS
R712	061G0402102 JY		RST CHIPR 1KOHM +-5% 1/16W YAGEO	1 PCS
D8102	393G006432S0HF		SWITCHING 1N4148W 0.15A 75V SOD-123	1 PCS
R522	061G04024998FT		RST 0402 4.99R 1% 1/16W SMD04024R99F	1 PCS
C8111	065G080510432K	Y	CAP CHIP 0805 100N 50V X7R +/-10%	1 PCS
R445	061G0402102 JY		RST CHIPR 1KOHM +-5% 1/16W YAGEO	1 PCS
R517	061G04024998FT		RST 0402 4.99R 1% 1/16W SMD04024R99F	1 PCS
R520	061G04024998FT		RST 0402 4.99R 1% 1/16W SMD04024R99F	1 PCS
R139	061G04024998FT		RST 0402 4.99R 1% 1/16W SMD04024R99F	1 PCS
R733	061G04028202FF		RST CHIPR 82KOHM +-1% 1/16W FENGHUA	1 PCS
FB418	061G0603000 JF		RST CHIPR MAX 0R05 1/10W FENGHUA	1 PCS
R138	061G04024998FT		RST 0402 4.99R 1% 1/16W SMD04024R99F	1 PCS
FB417	061G0603000 JF		RST CHIPR MAX 0R05 1/10W FENGHUA	1 PCS
R8122	061G0603104 JT		RST CHIP 100K 1/10W 5% TZAI YUAN	1 PCS
R510	061G0402101 JF		RST CHIPR 100 OHM +-5% 1/16W FENGHUA	1 PCS
Q706	057G 417511		MMBT3904	1 PCS
ZD505	093G 64S500 SU		ESD MLVG04025R0QV05BP INPAQ	1 PCS
R405	061G0402101 JF		RST CHIPR 100 OHM +-5% 1/16W FENGHUA	1 PCS

R516	061G04024998FT	RST 0402 4.99R 1% 1/16W SMD04024R99F	1 PCS
Q601	057G 417511	MMBT3904	1 PCS
Q8105	057G 417511	MMBT3904	1 PCS
Q502	057G 417511	MMBT3904	1 PCS
U703	056G 563143 C	LDO G1084PT43U 5A ADJ TO-252	1 PCS
R440	061G1206202 JF	RST CHIPR 2KOHM +-5% 1/4W FENGHUA	1 PCS
C128	065G0402105A5K A	CAP CHIP 0402 1UF K 10V X5R	1 PCS
C458	065G040210506K A	CAP 0402 1UF 10% 6.3V X6S	1 PCS
R132	061G0402101 JY	RST CHIPR 100 OHM +-5% 1/16W YAGEO	1 PCS
C457	065G040210506K A	CAP 0402 1UF 10% 6.3V X6S	1 PCS
R435	061G0402472 JT	RST CHIP 4K7 1/16W 5% TZAI YUAN	1 PCS
R134	061G0402101 JY	RST CHIPR 100 OHM +-5% 1/16W YAGEO	1 PCS
C459	065G040210506K A	CAP 0402 1UF 10% 6.3V X6S	1 PCS
R464	061G0402101 JY	RST CHIPR 100 OHM +-5% 1/16W YAGEO	1 PCS
R503	061G0603102 JY	RST CHIPR 1KOHM +-5% 1/10W YAGEO	1 PCS
C405	065G040210506K A	CAP 0402 1UF 10% 6.3V X6S	1 PCS
C719	065G080522605M T	CAP 0805 22uF 20% 6.3V X5R JMK212 BJ226	1 PCS
CN501	088G 34019G AD	HDMI HEADER 19P - -	1 PCS
C125	365G040218931C000F	CAP 0402 1.8PF 0.25pF 50V NP0 0402CG1R8	1 PCS
R9126	061G1206330 JF	RST CHIPR 33 OHM +-5% 1/4W FENGHUA	1 PCS
R8101	061G0805103 JT	RST 0805 10K 5% 1/8W	1 PCS
R437	061G08050004JT	RST CHIPR 0805 0 OHM 4A	1 PCS
R633	061G04022702FF	RST CHIP 27K 1/16W 1% FENGHUA	1 PCS
U702	056G 585 4A	LDO AP1117E33G-13 1A 3.3V SOT-223	1 PCS
C634	065G060347412K Y	CAP CHIP 0.47uF 16V +/-10% X7R	1 PCS
FB402	071G 59G301 M	CHIP BEAD 0603 300R 25% 200mA	1 PCS
L403	371G059Z102M00	CHIP BEAD 0603 1000ohm 25% MGGB1608M102	1 PCS
Q401	357G0763A06	MOSFET AO3407A -25A -30V 1.4W SOT23	1 PCS
FB413	061G0603000 JF	RST CHIPR MAX 0R05 1/10W FENGHUA	1 PCS
C8106	065G120610272K Y	CAP 1206 1NF 10% 500V X7R	1 PCS
FB101	071G 56D102 MA	CHIP BEAD 1000ohm 0805 1A	1 PCS
R408	061G04021801FY	RST CHIP 1K8 1/16W 1%	1 PCS
R719	061G04022401FF	RST CHIP 2.4K 1% 1/16W FENGHUA	1 PCS
C9113	065G080547131J A	CAP 0805 470PF 5% 50V NP0	1 PCS
R9102	061G0603563 JT	RST CHIPR 56KOHM +-5% 1/10W TZAI YUAN	1 PCS
C9111	065G080547131J A	CAP 0805 470PF 5% 50V NP0	1 PCS
C9107	065G080547131J A	CAP 0805 470PF 5% 50V NP0	1 PCS
Q8101	357G0600100010	MOSFET AOD2916 25A 100V TO252	1 PCS
C9109	065G080547131J A	CAP 0805 470PF 5% 50V NP0	1 PCS
U401	356G0568128604	SCALER MSD8314K2-XZ S2EPLQFP-128	1 PCS
C9108	065G080547131J A	CAP 0805 470PF 5% 50V NP0	1 PCS
R531	061G0402201 JF	RST CHIPR 200 OHM +-5% 1/16W FENGHUA	1 PCS
R734	061G04026202FF	RST CHIP 62K 1/16W 1% FENGHUA	1 PCS
Q8103	357G07630620HF	HF MOSFET 2N7002K_R1_00001 0.3A 60V	1 PCS
R613	061G0402101 JY	RST CHIPR 100 OHM +-5% 1/16W YAGEO	1 PCS
C447	065G060310512K T	CAP 0603 1UF 10% 16V X7R EMK107B7105KA	1 PCS
C637	065G040233131J T	AP CHIP 0402 330PF 50V J NPO	1 PCS
R102	061G0402103 JY	RST CHIPR 10KOHM +-5% 1/16W YAGEO	1 PCS
C623	065G040233131J T	AP CHIP 0402 330PF 50V J NPO	1 PCS
C630	065G040233131J T	AP CHIP 0402 330PF 50V J NPO	1 PCS
C638	065G060310432K Y	CAP 0603 100NF 10% 50V X7R	1 PCS

C119	065G040247131J	A	CAP CHIP 0402 470PF J 50V NPO	1 PCS
R741	061G0402103 JY		RST CHIPR 10KOHM +-5% 1/16W YAGEO	1 PCS
R109	061G0402000 JF		RST CHIPR MAX0R05 1/16W FENGHUA	1 PCS
R729	061G0402473 JF		RST CHIPR 47KOHM +-5% 1/16W FENGHUA	1 PCS
R409	061G0402473 JF		RST CHIPR 47KOHM +-5% 1/16W FENGHUA	1 PCS
FB403	071G 59C600 TA		CHIP BEAD 0603 60R 25% 600mA	1 PCS
C438	067G311C1013LT		EC SMD 100UF 20% 16V 6.3*7.7 3000 hr 2	1 PCS
R129	061G0402330 JT		RST CHIP 33R 1/16W 5% TZAI YUAN	1 PCS
R601	061G0402000 JF		RST CHIPR MAX0R05 1/16W FENGHUA	1 PCS
R128	061G06037509FF		ST CHIPR 75 OHM +-1% 1/10W FENGHUA	1 PCS
R450	061G0402000 JF		RST CHIPR MAX0R05 1/16W FENGHUA	1 PCS
C622	065G040222415K	Y	CAP CHIP 0402 220nF 16V X5R	1 PCS
C635	065G040222415K	Y	CAP CHIP 0402 220nF 16V X5R	1 PCS
R508	061G0402473 JF		RST CHIPR 47KOHM +-5% 1/16W FENGHUA	1 PCS
R701	061G0402000 JF		RST CHIPR MAX0R05 1/16W FENGHUA	1 PCS
R502	061G0402473 JF		RST CHIPR 47KOHM +-5% 1/16W FENGHUA	1 PCS
R509	061G0402473 JF		RST CHIPR 47KOHM +-5% 1/16W FENGHUA	1 PCS
L702	373G253S198D00		SMD CHOKE 4.7UH 20% 3.3A 0.026R SWPG604	1 PCS
L115	373G0402206FSD		CHIP IND 2nh ±0.3nH 0.3 0.2 SDCL1005C2N	1 PCS
R451	061G0402000 JF		RST CHIPR MAX0R05 1/16W FENGHUA	1 PCS
R416	061G0402000 JF		RST CHIPR MAX0R05 1/16W FENGHUA	1 PCS
L604	373G253S245M00		SMD CHOKE 22uH 20% 1A 0.225R MPIT4030-2	1 PCS
R147	061G0603750 JY		RST CHIPR 75 OHM +-5% 1/10W YAGEO	1 PCS
C126	065G120610612K	A	MLCC 1206 10UF 16V X7R +-10%	1 PCS
C114	065G040247131J	A	CAP CHIP 0402 470PF J 50V NPO	1 PCS
	070GHDCP500HDC		HDCP CODE	1 PCS
R8115	361G12068207FT		RST 1206 0.82R 1% 1/4W SMD12060R82FT	1 PCS
R8107	061G12062007FF		RST CHIPR 0.2 OHM +-1% 1/4W FENGHUA	1 PCS
L605	373G253S245M00		SMD CHOKE 22uH 20% 1A 0.225R MPIT4030-2	1 PCS
R8127	061G12062007FF		RST CHIPR 0.2 OHM +-1% 1/4W FENGHUA	1 PCS
L602	373G253S245M00		SMD CHOKE 22uH 20% 1A 0.225R MPIT4030-2	1 PCS
R108	061G0402000 JF		RST CHIPR MAX0R05 1/16W FENGHUA	1 PCS
R9101	061G08059101FF		RST CHIPR 9.1KOHM +-1% 1/8W FENGHUA	1 PCS
R107	061G0603750 JY		RST CHIPR 75 OHM +-5% 1/10W YAGEO	1 PCS
C8104	065G060310232K	F	CAP CHIP 0603 1NF K 50V X7R	1 PCS
R717	061G04021102FT		RST 0402 11K 1% 1/16W	1 PCS
C8109	065G080547432K	M	CAP 0805 470NF 10% 50V X7R	1 PCS
R8112	061G12063303FT		RST CHIPR 330 KOHM +-1% 1/4W TZAI YUAN	1 PCS
C436	065G040222031J	A	CAP 0402 22PF J 50V NPO	1 PCS
R8116	061G12063303FT		RST CHIPR 330 KOHM +-1% 1/4W TZAI YUAN	1 PCS
R144	061G0402103 JY		RST CHIPR 10KOHM +-5% 1/16W YAGEO	1 PCS
R423	061G0402000 JF		RST CHIPR MAX0R05 1/16W FENGHUA	1 PCS
L601	373G253S245M00		SMD CHOKE 22uH 20% 1A 0.225R MPIT4030-2	1 PCS
C401	065G060310432K	Y	CAP 0603 100NF 10% 50V X7R	1 PCS
R146	061G0402000 JF		RST CHIPR MAX0R05 1/16W FENGHUA	1 PCS
R732	061G0402104 JT		RST CHIP 100K 1/16W 5% TZAI YUAN	1 PCS
IC8101	356G0700008054		LED DRIVER PF7903BS SOP-8	1 PCS
R626	061G0402100 JF		RST CHIPR 10 OHM +-5% 1/16W FENGHUA	1 PCS
R730	061G0402104 JT		RST CHIP 100K 1/16W 5% TZAI YUAN	1 PCS
R519	061G04024998FT		RST 0402 4.99R 1% 1/16W SMD04024R99F	1 PCS
X101	393G022S60100J		CRYSTAL NXH16.000AE18F-KAB8-PA 16MHz 18	1 PCS

R623	061G0402100 JF		RST CHIPR 10 OHM +-5% 1/16W FENGHUA	1 PCS
R133	061G0402330 JT		RST CHIP 33R 1/16W 5% TZAI YUAN	1 PCS
R616	061G0402100 JF		RST CHIPR 10 OHM +-5% 1/16W FENGHUA	1 PCS
R621	061G0402100 JF		RST CHIPR 10 OHM +-5% 1/16W FENGHUA	1 PCS
R135	061G0402330 JT		RST CHIP 33R 1/16W 5% TZAI YUAN	1 PCS
R122	061G0402330 JT		RST CHIP 33R 1/16W 5% TZAI YUAN	1 PCS
R126	061G0402330 JT		RST CHIP 33R 1/16W 5% TZAI YUAN	1 PCS
R413	061G0402101 JF		RST CHIPR 100 OHM +-5% 1/16W FENGHUA	1 PCS
R518	061G04024998FT		RST 0402 4.99R 1% 1/16W SMD04024R99F	1 PCS
R501	061G0402101 JF		RST CHIPR 100 OHM +-5% 1/16W FENGHUA	1 PCS
R725	061G06031332FF		RST 0603 13.3K 1% 1/10W FENGHUA	1 PCS
R404	061G0402101 JF		RST CHIPR 100 OHM +-5% 1/16W FENGHUA	1 PCS
R104	061G0402221 JF		RST CHIPR 220 OHM ±5% 1/16W FENGHUA	1 PCS
C619	065G040210232K	A	CAP 0402 1NF 10% 50V X7R	1 PCS
R9103	061G0603104 JT		RST CHIP 100K 1/10W 5% TZAI YUAN	1 PCS
C103	065G040222322K	Y	CAP 0402 22NF 10% 25V X7R	1 PCS
ZD8102	393G039SA1200T		ZENER BZT52-B22 22V 0.41W SOD-123 150C	1 PCS
C633	065G040222415K	Y	CAP CHIP 0402 220nF 16V X5R	1 PCS
C616	065G040222415K	Y	CAP CHIP 0402 220nF 16V X5R	1 PCS
R125	061G06037509FF		ST CHIPR 75 OHM +-1% 1/10W FENGHUA	1 PCS
C8112	065G060310231J	Y	CHIP 0603 1000pF 50V NPO	1 PCS
TH1002	061G 56A100 WT		061g 56a100 wt	1 PCS
C730	065G040222031J	Y	CAP CHIP 0402 22P 50V NP0 +/-5%	1 PCS
R8125	361G12068207FT		RST 1206 0.82R 1% 1/4W SMD12060R82FT	1 PCS
R401	061G0402000 JF		RST CHIPR MAX0R05 1/16W FENGHUA	1 PCS
L108	373G0603687GJM		CHIP IND 68nH 5% 0.3A 0.75R MGCI1608H68	1 PCS
C8110	065G060310231J	Y	CHIP 0603 1000pF 50V NPO	1 PCS
Q602	057G 417512		MMBT3906	1 PCS
Q8104	057G 417511		MMBT3904	1 PCS
Q404	057G 417511		MMBT3904	1 PCS
Q405	057G 417511		MMBT3904	1 PCS
Q8106	057G 417512		MMBT3906	1 PCS
R731	061G0402104 JY		RST CHIPR 100KOHM +-5% 1/16W YAGEO	1 PCS
R628	061G0402104 JT		RST CHIP 100K 1/16W 5% TZAI YUAN	1 PCS
C136	065G040256031J	Y	CAP CHIP 0402 56pF 50V NP0 +/-5%	1 PCS
R720	061G0402104 JT		RST CHIP 100K 1/16W 5% TZAI YUAN	1 PCS
R439	061G0402104 JT		RST CHIP 100K 1/16W 5% TZAI YUAN	1 PCS
R441	061G0402104 JT		RST CHIP 100K 1/16W 5% TZAI YUAN	1 PCS
Q402	057G 417512		MMBT3906	1 PCS
U102	356G0566024611		Silicon Tuner R840	1 PCS
C118	065G0603225A5K	M	CAP MLCC 0603 2.2uF K 10V X5R	1 PCS
C107	065G040233131J	Y	0402 330PF J 50V NPO	1 PCS
R710	061G0402000 JT		RST 0402 0.05R MAX 1/16W -	1 PCS
U601	356G0616028600		AUDIO AD52580-QG28NAR (AF) 15W E-TSSOP	1 PCS
R8128	061G0603333 JT		RST CHIP 33K 1/10W 5% TZAI YUAN	1 PCS
	040G 45762420A		LABEL 25x6mm	0.260 PCS
R418	061G0402204 JF		RST 0402 200K 5% 1/16W FENGHUA	1 PCS
R411	061G04027500FT		RST 0402 750R 1% 1/16W	1 PCS
C112	065G0603225A5K	M	CAP MLCC 0603 2.2uF K 10V X5R	1 PCS
C111	065G0603225A5K	M	CAP MLCC 0603 2.2uF K 10V X5R	1 PCS
R425	061G0402204 JF		RST 0402 200K 5% 1/16W FENGHUA	1 PCS

E715	715G6619C01002004N	MAIN PCB FR4 DS 193*125*1.6mm	1 PCS
R9104	061G1206221 JT	ST CHIPR 220 OHM +-5% 1/4W TZAI YUAN	1 PCS
R446	061G0402103 JT	RST CHIP 10K 1/16W 5% TZAI YUAN	1 PCS
R443	061G0402103 JT	RST CHIP 10K 1/16W 5% TZAI YUAN	1 PCS
R9124	061G1206123 JT	RST CHIP 12K 5% 1/4W TZAI YUAN	1 PCS
C615	065G080510615K A	CAP 0805 10UF 10% 16V X5R	1 PCS
R447	061G0402103 JT	RST CHIP 10K 1/16W 5% TZAI YUAN	1 PCS
C614	065G080510615K A	CAP 0805 10UF 10% 16V X5R	1 PCS
R137	061G0402103 JT	RST CHIP 10K 1/16W 5% TZAI YUAN	1 PCS
R116	061G0402103 JT	RST CHIP 10K 1/16W 5% TZAI YUAN	1 PCS
R629	061G0402103 JT	RST CHIP 10K 1/16W 5% TZAI YUAN	1 PCS
R117	061G0402103 JT	RST CHIP 10K 1/16W 5% TZAI YUAN	1 PCS
R9105	061G1206221 JT	ST CHIPR 220 OHM +-5% 1/4W TZAI YUAN	1 PCS
C718	065G0805106A5K A	CAP 0805 10UF 10% 10V X5R	1 PCS
L110	373G0402186FSM	CHIP IND 1.8nh ±0.3nh 0.3 0.1 MGCI1005T	1 PCS
R9110	061G08057501FT	RST CHIP R 7K5 1/8W +/-1%	1 PCS
R402	061G0402472 JF	RST CHIPR 4.7KOHM +-5% 1/16W FENGHUA	1 PCS
L106	371G042Z102D00	CHIP BEAD 0402 1000 25% GZ1005D102CTF 0	1 PCS
R9109	061G08051001FT	RST CHIP 1K 1/8W 1%	1 PCS
L114	373G0402336FSD	CHIP IND 3.3nh 0.3nh 0.3A 0.2R SDCL1005	1 PCS
R118	061G0402123 JF	RST CHIPR 12KOHM +-5% 1/16W FENGHUA	1 PCS
R8121	061G0603513 JT	RST CHIP 51K 1/10W 5% TZAI YUAN	1 PCS
Q708	057G 763940	MOSFET AO3401A SOT-23	1 PCS
R407	061G04027500FT	RST 0402 750R 1% 1/16W	1 PCS
R9106	061G1206204 JT	ST CHIPR 200KOHM +-5% 1/4W TZAI YUAN	1 PCS
R9107	061G1206204 JT	ST CHIPR 200KOHM +-5% 1/4W TZAI YUAN	1 PCS
U706	356GD563006600	DC/DC SY8104ADC 4A 18V TSOT23-6	1 PCS
R123	061G0402123 JF	RST CHIPR 12KOHM +-5% 1/16W FENGHUA	1 PCS
R506	061G0402103 JT	RST CHIP 10K 1/16W 5% TZAI YUAN	1 PCS
R119	061G0402123 JF	RST CHIPR 12KOHM +-5% 1/16W FENGHUA	1 PCS
C413	065G060310605M M	CAP 0603 10UF 20% 6.3V X5R	1 PCS
C461	065G060310605M M	CAP 0603 10UF 20% 6.3V X5R	1 PCS
R120	061G0402123 JF	RST CHIPR 12KOHM +-5% 1/16W FENGHUA	1 PCS
C456	065G060310605M M	CAP 0603 10UF 20% 6.3V X5R	1 PCS
R619	061G0402103 JT	RST CHIP 10K 1/16W 5% TZAI YUAN	1 PCS
R742	061G0402000 JT	RST 0402 0.05R MAX 1/16W -	1 PCS
C140	065G040222322K F	CAP 0402 22NF 10% 25V X7R	1 PCS
C728	065G1206226A5K A	1206 22UF K 10V X5R	1 PCS
C727	065G1206226A5K A	1206 22UF K 10V X5R	1 PCS
R707	061G0402472 JT	RST CHIP 4K7 1/16W 5% TZAI YUAN	1 PCS
U101	056G 563149	IC G903T63UF 0.6A/3.3V SOT-223	1 PCS
R465	061G0402103 JF	RST CHIPR 10KOHM +-5% 1/16W FENGHUA	1 PCS
R9906	061G0805564 JT	RST CHIPR 560K +-5% 1/8W TZAI YUAN	1 PCS
L703	373G253S256D00	SMD CHOKE 2.2uH 30% 2.95A 0.030R SWPG40	1 PCS
R9907	061G0805564 JT	RST CHIPR 560K +-5% 1/8W TZAI YUAN	1 PCS
R461	061G0402103 JF	RST CHIPR 10KOHM +-5% 1/16W FENGHUA	1 PCS
R9903	061G0805564 JT	RST CHIPR 560K +-5% 1/8W TZAI YUAN	1 PCS
R428	061G0402105 JF	RST CHIPR 1MOHM 5% 1/16W FENGHUA	1 PCS
R427	061G0402000 JY	RST CHIPR MAX 0R05 OHM 1/16W YAGEO	1 PCS
R9904	061G0805564 JT	RST CHIPR 560K +-5% 1/8W TZAI YUAN	1 PCS
R723	061G0402472 JT	RST CHIP 4K7 1/16W 5% TZAI YUAN	1 PCS

C722	065G0805106A5K	A	CAP 0805 10UF 10% 10V X5R	1 PCS
R9902	061G0805564 JT		RST CHIPR 560K +-5% 1/8W TZAI YUAN	1 PCS
R727	061G0402472 JT		RST CHIP 4K7 1/16W 5% TZAI YUAN	1 PCS
C403	065G060310605M	A	MLCC 0603 10UF 6.3V X5R +-20%	1 PCS
C130	065G060310605M	A	MLCC 0603 10UF 6.3V X5R +-20%	1 PCS
C721	065G0805106A5K	A	CAP 0805 10UF 10% 10V X5R	1 PCS
C402	065G060310605M	A	MLCC 0603 10UF 6.3V X5R +-20%	1 PCS
C716	065G0805106A5K	A	CAP 0805 10UF 10% 10V X5R	1 PCS
C142	065G060310605M	A	MLCC 0603 10UF 6.3V X5R +-20%	1 PCS
R718	061G12060004JY		RST CHIPR MAX0R05 4A 1/4W YAGEO	1 PCS
C711	065G0805106A5K	A	CAP 0805 10UF 10% 10V X5R	1 PCS
C141	065G040210412K	F	CAP 0402 100NF 10% 16V X7R	1 PCS
ZD8101	393G039S96300T00HF		ZENER BZT52-B4V7 4.7V 410mW SOD-123	1 PCS
C425	065G040227031J	F	CAP 0402 27PF 5% 50V NP0	1 PCS
Q8107	057G 763125		MOSFET AO4486 4.2A 100V SO-8	1 PCS
R457	061G04024701FF		RST 0402 4.7K 1% 1/16W	1 PCS
R121	061G0402103 JT		RST CHIP 10K 1/16W 5% TZAI YUAN	1 PCS
C454	065G060310605M	M	CAP 0603 10UF 20% 6.3V X5R	1 PCS
R627	061G0402103 JT		RST CHIP 10K 1/16W 5% TZAI YUAN	1 PCS
C460	065G060310605M	M	CAP 0603 10UF 20% 6.3V X5R	1 PCS
R611	061G0402103 JT		RST CHIP 10K 1/16W 5% TZAI YUAN	1 PCS
R101	061G0402103 JF		RST CHIPR 10KOHM +-5% 1/16W FENGHUA	1 PCS
R473	061G0402103 JT		RST CHIP 10K 1/16W 5% TZAI YUAN	1 PCS
C439	065G060310605M	M	CAP 0603 10UF 20% 6.3V X5R	1 PCS
C8103	065G080510532K	M	CAP 0805 1UF 10% 50V X7R	1 PCS
R136	061G0402103 JT		RST CHIP 10K 1/16W 5% TZAI YUAN	1 PCS
R8102	061G06034702FF		RST CHIPR 47KOHM +-1% 1/10W FENGHUA	1 PCS
R124	061G0402103 JT		RST CHIP 10K 1/16W 5% TZAI YUAN	1 PCS
R612	061G0402103 JT		RST CHIP 10K 1/16W 5% TZAI YUAN	1 PCS
R9112	061G1206330 JT		RST CHIP R 33ohm 1/4W +/-5%	1 PCS
R722	061G0402103 JT		RST CHIP 10K 1/16W 5% TZAI YUAN	1 PCS
R9113	061G1206330 JT		RST CHIP R 33ohm 1/4W +/-5%	1 PCS
C437	065G040210412K	F	CAP 0402 100NF 10% 16V X7R	1 PCS
C444	065G040210412K	F	CAP 0402 100NF 10% 16V X7R	1 PCS
C8114	065G080510532K	M	CAP 0805 1UF 10% 50V X7R	1 PCS
C430	065G040227031J	F	CAP 0402 27PF 5% 50V NP0	1 PCS
R9905	061G0805564 JT		RST CHIPR 560K +-5% 1/8W TZAI YUAN	1 PCS
C724	065G040210412K	F	CAP 0402 100NF 10% 16V X7R	1 PCS
R406	061G0402103 JF		RST CHIPR 10KOHM +-5% 1/16W FENGHUA	1 PCS
R417	061G0402472 JF		RST CHIPR 4.7KOHM +-5% 1/16W FENGHUA	1 PCS
C9106	065G060310131J	M	CAP 0603 100PF 5% 50V NP0 -	1 PCS
R8110	061G0603101 JT		RST CHIP 100R 1/10W 5% TZAI YUAN	1 PCS
R8103	061G0603103 JT		RST CHIP 10K 1/10W 5% TZAI YUAN	1 PCS
R634	061G0402104 JF		RST CHIPR 100KOHM +-5% 1/16W FENGHUA	1 PCS
R431	061G0402472 JY		RST 0402 4.7K 5% 1/16W RC0402JR-074K7L	1 PCS
R711	061G0402104 JF		RST CHIPR 100KOHM +-5% 1/16W FENGHUA	1 PCS
R434	061G0402472 JY		RST 0402 4.7K 5% 1/16W RC0402JR-074K7L	1 PCS
R103	061G0402182 JF		RST CHIPR 1.8KOHM 5% 1/16W FENGHUA	1 PCS
R421	061G0402472 JY		RST 0402 4.7K 5% 1/16W RC0402JR-074K7L	1 PCS
R8111	061G0603103 JT		RST CHIP 10K 1/10W 5% TZAI YUAN	1 PCS
FB704	071G 56G301 MA		CHIP BEAD 0805 300OHM 4A	1 PCS

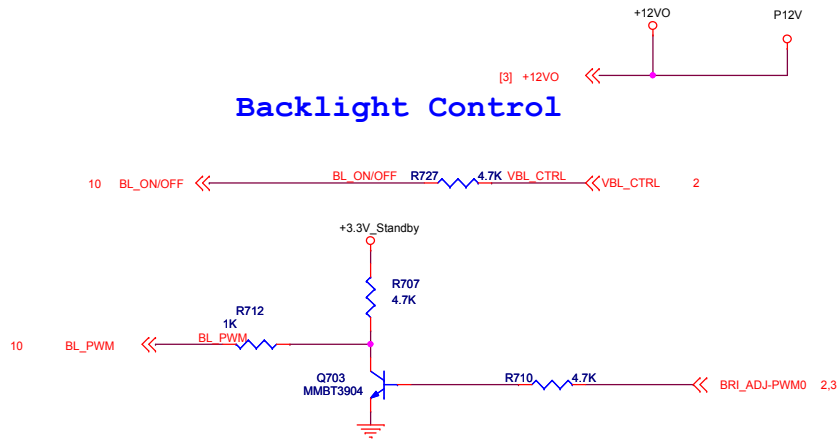
C414	065G040247312K	A	CAP 0402 47NF 10% 16V X7R	1 PCS
R8126	361G12069107FT		RST 1206 0.91R 1% 1/4W SMD12060R91FT	1 PCS
R9120	061G1206330 JF		RST CHIPR 33 OHM +-5% 1/4W FENGHUA	1 PCS
R149	061G0402101 JY		RST CHIPR 100 OHM +-5% 1/16W YAGEO	1 PCS
R9121	061G1206330 JF		RST CHIPR 33 OHM +-5% 1/4W FENGHUA	1 PCS
R8106	061G0805103 JT		RST 0805 10K 5% 1/8W	1 PCS
C122	065G040247312K	A	CAP 0402 47NF 10% 16V X7R	1 PCS
R9122	061G1206330 JF		RST CHIPR 33 OHM +-5% 1/4W FENGHUA	1 PCS
R448	061G0402510 JF		RST CHIP 51R 1/16W 5% FENGHUA	1 PCS
C629	065G060347412K	Y	CAP CHIP 0.47uF 16V +/-10% X7R	1 PCS
R726	061G04021003FT		RST 0402 100K 1% 1/16W TZAI YUAN	1 PCS
R140	061G0402471 JT		RST CHIP 470R 1/16W 5% TZAI YUAN	1 PCS
C726	065G060310432K	F	CAP CHIP 0603 0.1UF K 50V X7R	1 PCS
C450	065G0805106A5K	A	CAP 0805 10UF 10% 10V X5R	1 PCS
R625	061G0402101 JY		RST CHIPR 100 OHM +-5% 1/16W YAGEO	1 PCS
C8105	065G060310432K	F	CAP CHIP 0603 0.1UF K 50V X7R	1 PCS
C624	065G060347412K	Y	CAP CHIP 0.47uF 16V +/-10% X7R	1 PCS
R724	061G04021003FT		RST 0402 100K 1% 1/16W TZAI YUAN	1 PCS
C641	065G060347412K	Y	CAP CHIP 0.47uF 16V +/-10% X7R	1 PCS
R630	061G0402472 JT		RST CHIP 4K7 1/16W 5% TZAI YUAN	1 PCS
R8118	361G12069107FT		RST 1206 0.91R 1% 1/4W SMD12060R91FT	1 PCS
R442	061G0402472 JT		RST CHIP 4K7 1/16W 5% TZAI YUAN	1 PCS
R8114	061G0603101 JT		RST CHIP 100R 1/10W 5% TZAI YUAN	1 PCS
R735	061G0402472 JT		RST CHIP 4K7 1/16W 5% TZAI YUAN	1 PCS
R9123	061G1206100 JT		RST CHIPR 10 OHM +-5% 1/4W TZAI YUAN	1 PCS
C9114	065G080547131J	A	CAP 0805 470PF 5% 50V NP0	1 PCS
L105	373G253S254M00		SMD CHOKE 180NH 5% 0.24A 1.25R MGTC0603	1 PCS
R458	061G0402101 JY		RST CHIPR 100 OHM +-5% 1/16W YAGEO	1 PCS
C631	065G060310512K	A	UF 10% 16V X7R	1 PCS
D101	393G006433P0HF		HF BAV99_R1_00001 0.5A 100V SOT-23	1 PCS
L109	371G042Z102D00		CHIP BEAD 0402 1000 25% GZ1005D102CTF 0	1 PCS
D401	393G006433P0HF		HF BAV99_R1_00001 0.5A 100V SOT-23	1 PCS
R8120	061G12062007FF		RST CHIPR 0.2 OHM +-1% 1/4W FENGHUA	1 PCS
C713	065G080510615K	T	CHIP 10uF 16V X5R 0805	1 PCS
R113	061G0402330 JF		RST CHIPR 33 OHM +-5% 1/16W FENGHUA	1 PCS
X401	093G 22SX02 YC		CRYSTAL YC 49U/SMD 24MHz 20PPM 18PF	1 PCS
C115	065G0603225A5K	M	CAP MLCC 0603 2.2uF K 10V X5R	1 PCS
R130	061G06037509FF		ST CHIPR 75 OHM +-1% 1/10W FENGHUA	1 PCS
R9111	061G08055602FT		RST CHIP R 56K 1/8W +/-1%	1 PCS
C9104	065G080547525K	T	CAP MLCC 0805 4.7uF K 25V X5R	1 PCS
R8117	061G08055602FT		RST CHIP R 56K 1/8W +/-1%	1 PCS
R8123	061G06031502FT		RST CHIP 15K 1/10W 1%	1 PCS
C632	065G060310512K	A	UF 10% 16V X7R	1 PCS
C613	065G060310432K	Y	CAP 0603 100NF 10% 50V X7R	1 PCS
R403	061G0402472 JF		RST CHIPR 4.7KOHM +-5% 1/16W FENGHUA	1 PCS
C113	065G040247131J	A	CAP CHIP 0402 470PF J 50V NPO	1 PCS
C9110	065G060310432K	Y	CAP 0603 100NF 10% 50V X7R	1 PCS
C116	065G040247131J	A	CAP CHIP 0402 470PF J 50V NPO	1 PCS
C626	065G040233131J	T	AP CHIP 0402 330PF 50V J NPO	1 PCS
R436	061G0402103 JY		RST CHIPR 10KOHM +-5% 1/16W YAGEO	1 PCS
C618	065G060310432K	Y	CAP 0603 100NF 10% 50V X7R	1 PCS

R8108	061G0805331 JT	RST CHIP 330R 1/8W 5% TZAI YUAN	1 PCS
L107	371G042Z102D00	CHIP BEAD 0402 1000 25% GZ1005D102CTF 0	1 PCS
C117	065G040247312K A	CAP 0402 47NF 10% 16V X7R	1 PCS
C717	065G080522605M T	CAP 0805 22uF 20% 6.3V X5R JMK212 BJ226	1 PCS
FB603	071G 56G301 MA	CHIP BEAD 0805 300OHM 4A	1 PCS
C8113	065G060310432K F	CAP CHIP 0603 0.1UF K 50V X7R	1 PCS
R9127	061G1206330 JF	RST CHIPR 33 OHM +-5% 1/4W FENGHUA	1 PCS
C9115	065G060310432K F	CAP CHIP 0603 0.1UF K 50V X7R	1 PCS
R8104	061G0805470 JT	RST CHIPR 47OHM +-5% 1/8W TZAI YUAN	1 PCS
R9125	061G1206330 JF	RST CHIPR 33 OHM +-5% 1/4W FENGHUA	1 PCS
C110	065G040247312K A	CAP 0402 47NF 10% 16V X7R	1 PCS
R150	061G0402101 JY	RST CHIPR 100 OHM +-5% 1/16W YAGEO	1 PCS
C407	065G040247312K A	CAP 0402 47NF 10% 16V X7R	1 PCS
R740	061G0805000 JY	RST CHIPR MAX 0R05 OHM 1/8W YAGEO	1 PCS
C147	065G040247312K A	CAP 0402 47NF 10% 16V X7R	1 PCS
U707	356GD563008601	DC/DC SY8003ADFC 3A 5.5V DFN2x2-8	1 PCS
R422	061G0402472 JY	RST 0402 4.7K 5% 1/16W RC0402JR-074K7L	1 PCS
C408	065G040247312K A	CAP 0402 47NF 10% 16V X7R	1 PCS
C410	065G040247312K A	CAP 0402 47NF 10% 16V X7R	1 PCS
C411	065G040247312K A	CAP 0402 47NF 10% 16V X7R	1 PCS
C120	065G040247312K A	CAP 0402 47NF 10% 16V X7R	1 PCS
R8124	061G0603103 JT	RST CHIP 10K 1/10W 5% TZAI YUAN	1 PCS
R9101	061G08059101FY	RST CHIP 9K1 1/8W 1%	1 PCS
R132	061G0402101 JF	RST CHIPR 100 OHM +-5% 1/16W FENGHUA	1 PCS
R134	061G0402101 JF	RST CHIPR 100 OHM +-5% 1/16W FENGHUA	1 PCS
R9126	061G1206330 JT	RST CHIP R 33ohm 1/4W +/-5%	1 PCS
R9123	061G1206100 JF	RST CHIPR 10 OHM +-5% 1/4W FENGHUA	1 PCS
R9120	061G1206330 JT	RST CHIP R 33ohm 1/4W +/-5%	1 PCS
R9121	061G1206330 JT	RST CHIP R 33ohm 1/4W +/-5%	1 PCS
R9122	061G1206330 JT	RST CHIP R 33ohm 1/4W +/-5%	1 PCS
R9127	061G1206330 JT	RST CHIP R 33ohm 1/4W +/-5%	1 PCS
R9125	061G1206330 JT	RST CHIP R 33ohm 1/4W +/-5%	1 PCS
C9104	065G080547525K M	CAP 0805 4.7UF 10% 25V X5R	1 PCS
E715	715G6619C01002004C	MAIN PCB FR4 DS 193*125*1.6mm	1 PCS
C9126	065G 1K470 2T6921	CAP CER 47pF K 1KV	1 PCS
C9103	065G 1K4719ST	CAP CER 470PF 10% 1KV R	1 PCS
C9905	065G306K10123R	CAP Y1 100PF 10% 250V Y5P	1 PCS
C9905	065G306K1012WR	CAP Y1 100PF 10% 250V Y5P CT7-Y1-250V-06	1 PCS
C9908	065G306K68123R	CAP Y1 680PF 10% 250V Y5P	1 PCS
C9105	067G 5154707KB	EC 47UF 20% 50V 6.3*11 EY	1 PCS
C9112	067G 5154714KT	EC 470UF 20% 25V 10*12 5000 hr 1.45A EV	1 PCS
C8101	067G215D3314KT	EC 330UF 20% 25V 10*12 ED	1 PCS
FB8101	071G 55 26 H	BEAD 3.5*6.0*0.8 127R 25% BF-I35060R-79	1 PCS
FB8101	071G 55 26 S	BEAD 3.5*6 127R 25% LB3.5*0.8*6-2	1 PCS
F902	084G 56 4 C	FUSE 4A 250V MST 4A 250V	1 PCS
F902	084G 56 4W	FUSE 4A 250V	1 PCS
C9907	365G306J47063R	CAP Y1 47PF 5% 250V SL CD45SL2GA470JDSKA	1 PCS
C9906	365G306J47063R	CAP Y1 47PF 5% 250V SL CD45SL2GA470JDSKA	1 PCS
C9906	365G306J4706PR	CAP Y1 47PF 5% 250V SL SL0AH470J07SXAMS	1 PCS
C9907	365G306J4706PR	CAP Y1 47PF 5% 250V SL SL0AH470J07SXAMS	1 PCS
C9908	365G306K6812WR	CAP Y1 680PF 10% 250V Y5P	1 PCS

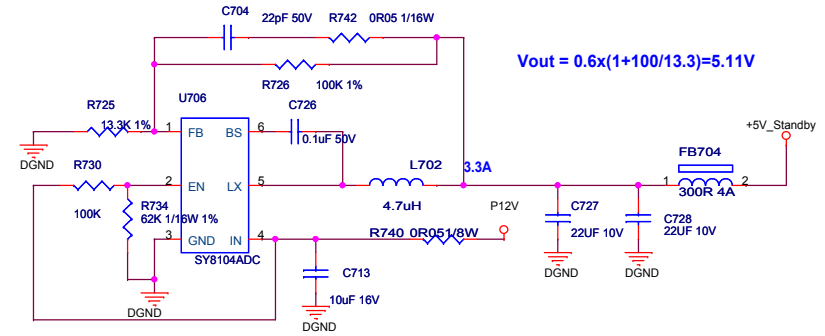
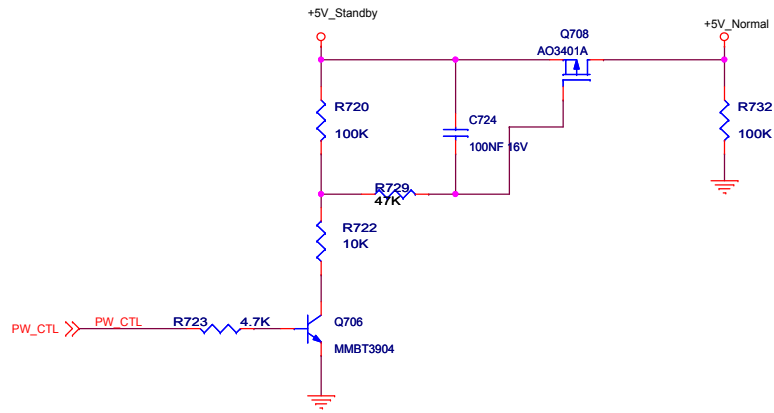
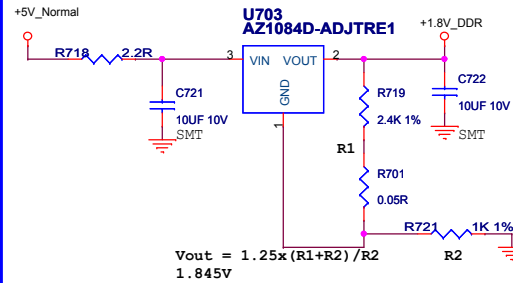
C9116	367G315X2214KT	EC 220uF 20% 25V 10*7 3000 hr 0.8A ER1E	1 PCS
C8102	367G415X3317KT	EC 330UF 20% 50V 12.5*12	1 PCS
	IRPFFXB9	IR BOARD G7626-R0A-003-0040-20151102	1 PCS
	SMTIRPFFXB9	IR BOARD FOR SMT	1 PCS
LED001	081G 15W 1 GP	CHIP LED White GPSS008WC1-D	1 PCS
ZD001	093G 64 37 N	VPORT0603100KV05	1 PCS
	709T67260ZS001	COMSUMPTIVE ASSY	1 PCS
	Q52G1701 7 XW	MESH PRINTTING_PAPER	0.050 CM
	055G 100610	Solder Paste	0.028 G
	Q49G01WB1JL0HF000	Water-based Cleaning Agent	0.100 ML
	Q05G6054 1	SHEET	0.003 PCS
E715	715G6726R01003004C	IR PCB FR4 DS 35x15x1.6mm	1 PCS
E715	715G6726R01003004K	IR PCB FR4 DS 35x15x1.6mm	1 PCS
Q001	057G 477900 T	RA SIG SM BC847C (KEC0) R	1 PCS
R004	061G0402101 JT	RST CHIP 100R 1/16W 5% TZAI YUAN	1 PCS
R002	061G0402102 JT	RST CHIP 1K 1/16W 5% TZAI YUAN	1 PCS
R003	061G0402272 JT	RST CHIP 2K7 1/16W 5% TZAI YUAN	1 PCS
R001	061G0402471 JT	RST CHIP 470R 1/16W 5% TZAI YUAN	1 PCS
C002	065G040210232K E	NO-SUGGEST 0402 1000pF K 50V X7R	1 PCS
C002	065G040210232K Y	CAP 0402 1NF 10% 50V X7R CC0402KRX7R9BB	1 PCS
C003	065G040210412K E	CAP 0402 100NF 10% 16V X7R	1 PCS
C003	065G040210412K Y	CAP 0402 100NF 10% 16V X7R	1 PCS
C001	065G060310512K T	CAP 0603 1UF 10% 16V X7R EMK107B7105KA	1 PCS
CN001	311GW125D05ACL	CONN 1.25mm 5P V/T B1254W05VUM2	1 PCS
U001	356GS927052	IR RECEIVER TSOP75436WTT 36 KHZ	1 PCS
	J40G000281353A	CEL LABEL	1 PCS
	J40G032081306A	RATING LABEL 32PHF3601/T3	1 PCS
	J41G32MV81309B	MANUAL 32PHF3601	1 PCS
	J41G32SV81304B	QSG 32PHF3601	1 PCS
	J44GJ90181301C00JA	ARTWORK CARTON 32PHF3601/T3 & 32PHF36	1 PCS
	J44GJ9041010KM	CUSHION-T N/A China(2002)	1 PCS
	J44GJ9042010KM	CUSHION-B N/A China(2002)	1 PCS
E750	LVB315WHBN0AJ42F0	PANEL TPT315B5-WHBN0.K S8945B BJ TP	1 PCS
E750	LVB315WHBN0ALF2F0	TPT315B5-WHBN0.K S8947J BJ TPV	1 PCS
	P34E2652XLN01LC100	BASE_RIGHT TV315W-14c-ph15-16ph09	1 PCS
	P34E2653XLN01LC100	BASE_LEFT TV315W-14c-ph15-16ph09	1 PCS
	P40GD000813 9A	A4 PALLET LABEL -for A4 paper	0.050 PCS
	Q12G71400610HF0AJF	HEAT PAD	1 PCS
M01601	Q16G0001020089AFDG	EVA WASHER	2 PCS
M01601	Q16G0001020089AFJF	EVA WASHER	2 PCS
	Q36T 600 30 6	NONWOVEN FABRIC	1 PCS
	Q36T 600 49 7	NON-WOVEN FABRIC	2 PCS
	Q40G0001624 4A	产线需求的栈板LABEL	0.100 PCS
	Q45G88010TV05600SJ	PROTECT BAG	1 PCS
	Q45G99010TV03900SZ	PROTECT BAG	1 PCS
	Q49G 51500 HF	panel清洁剂	0.244 G
	Q52G100203000A00JY	AL FOIL	9 CM
	Q52G1501150523 W	INSULATING PLATE	64 CM
	X15T8967301000GMNP	BKT_IO	1 PCS
	X15T896840100000JH	BKT_IO	1 PCS
	X33E0196001Z1C0100	DECO_BEZEL	1 PCS

	X34V0171XJY0BD0100	REAR_COVER TV315W-14c-ph15-16ph09	1 PCS
	X40G0001624 2A	Label for screw pe bag	1 PCS
	X40G000181310C	CARTON LABEL	1 PCS
	X40G000881328A	OTHER LABEL 开机必读标签	1 PCS
	X41G78DV81311E	WARRANTY CARD TPV address china	1 PCS
R05201	X52G150100300000BK	TAPE_INSULATING	12 CM
R05201	X52G150100300000YY	TAPE_INSULATING	12 CM
	X52G180144100000BK	INSULATING SHEET	1 PCS
	X52G180144400000JF	INSULATING SHEET	1 PCS
	X52G200124700000BK	TAPE	90 MM

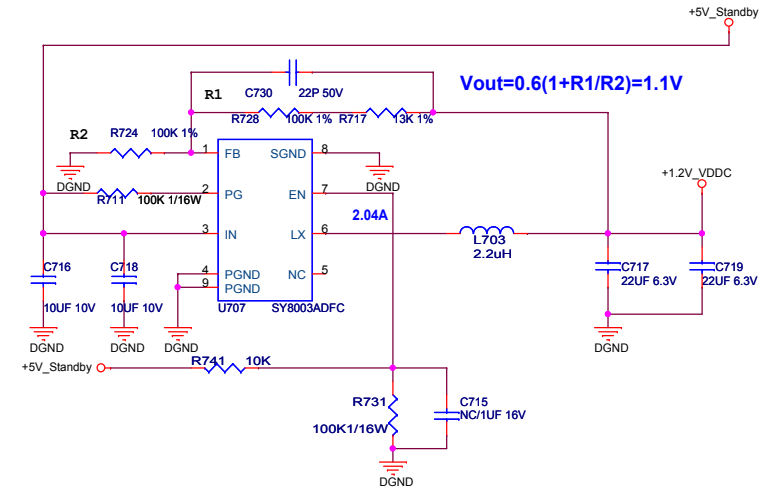
Backlight Control



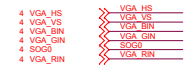
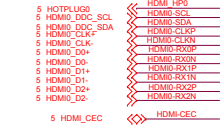
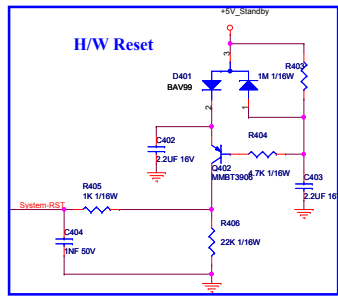
DDR Power



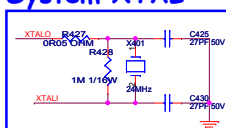
CORE POWER 1.28V

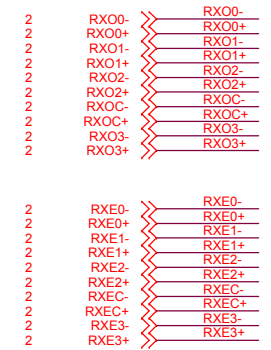


TPV (Top Victory Electronics Co., Ltd.)	OEM MODEL	NA	Size	A3
Key Component	715GXXXX-M0A-000-0040	TPV MODEL	Rev	A
Date	Wednesday, November 20, 2013	Sheet	1 of 10	<終審>

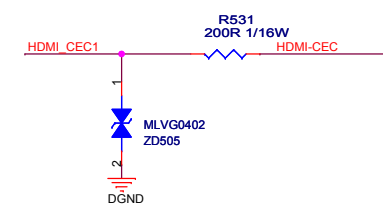
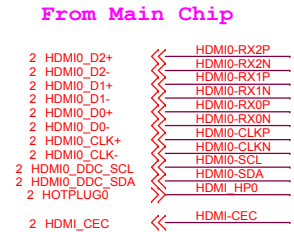
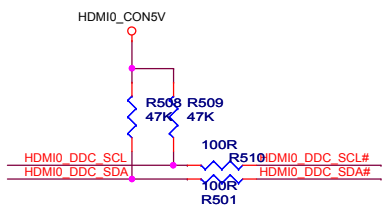
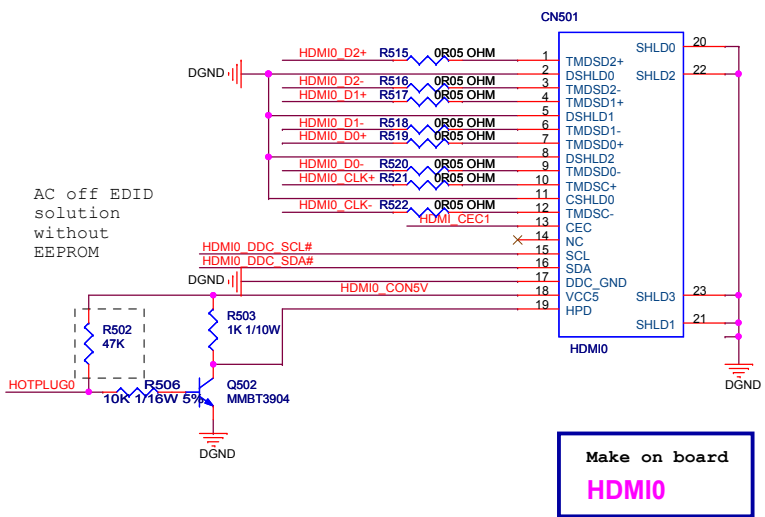


System XTAL

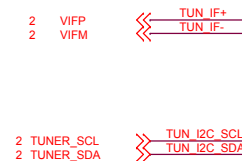




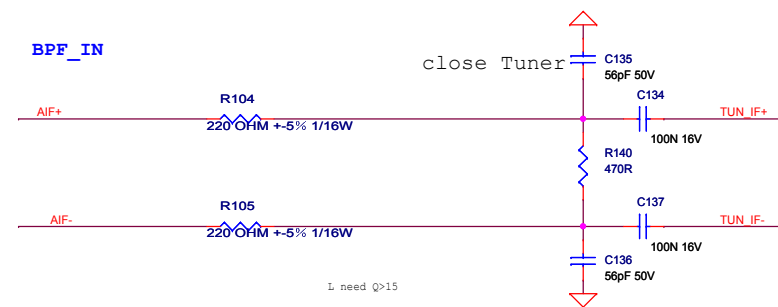
TPV (Top Victory Electronics Co., Ltd.)		OEM MODEL	NA	Size	B
絨隔瓜網膜	GXXXX-M0A-000-0040	TPV MODEL	NA	Rev	A
Key Component	03. LVDS	PCB NAME	715GXXXX-M0A-000-0040	瑞夢	<瑞夢>
Date	Wednesday, November 20, 2013	Sheet	3 of 10		



TPV (Top Victory Electronics Co., Ltd.)		OEM MODEL	NA	Size	Custom
產品編號	GXXXX-M0A-000-0040	TPV MODEL	NA	Rev	A
Key Component	05. Input_HDMI	PCB NAME	715GXXXX-M0A-000-0040	稱重	<稱重>
Date	Wednesday, November 20, 2013	Sheet	5 of 10		



Close to Main chip



Close to Main chip
+3.3V Standby

R144
10K

R148
0R05 OHM

C140
22NF 25V

AGND

IF AGC from IC

IF AGC

Close to Tuner

R101
10K

C41
100NF 16V

AGND

R145
NC/100K

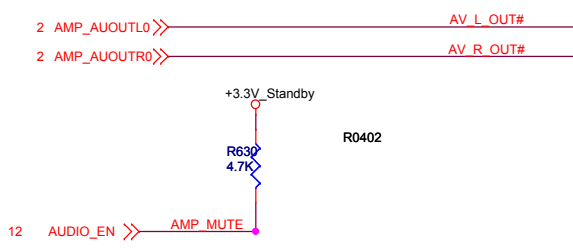
IF AGC

To tuner

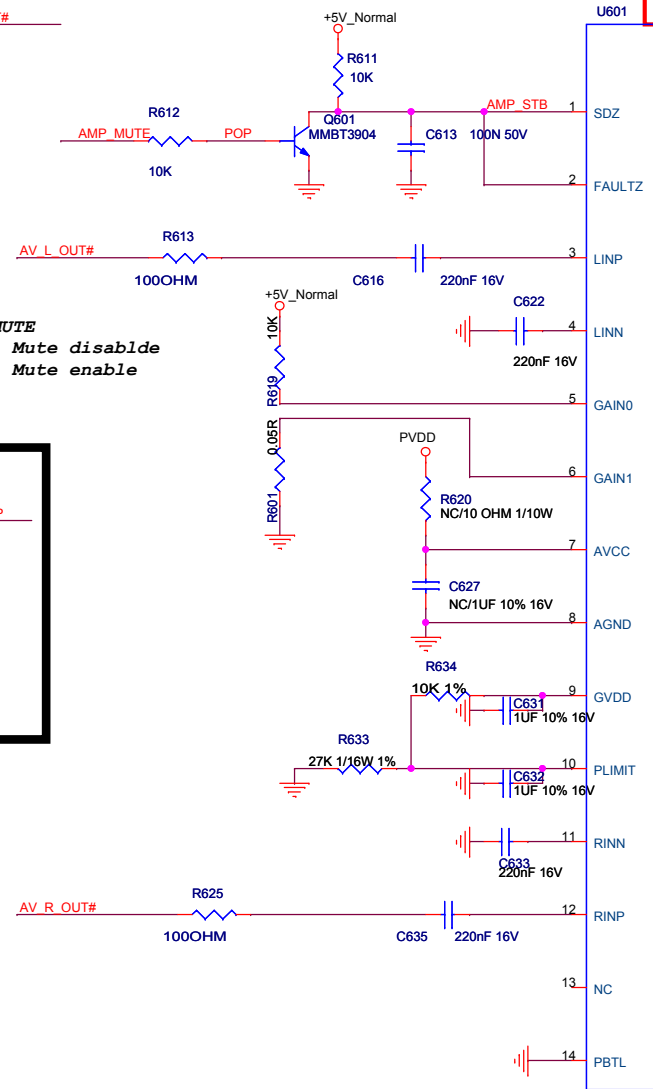
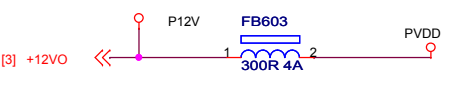
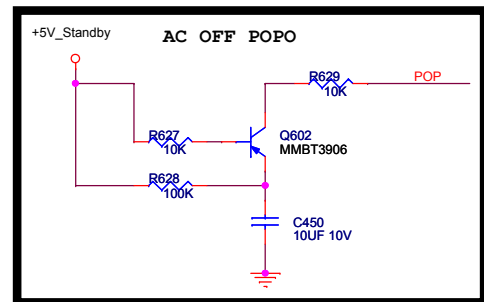
IF AGC trace shielding by I2C



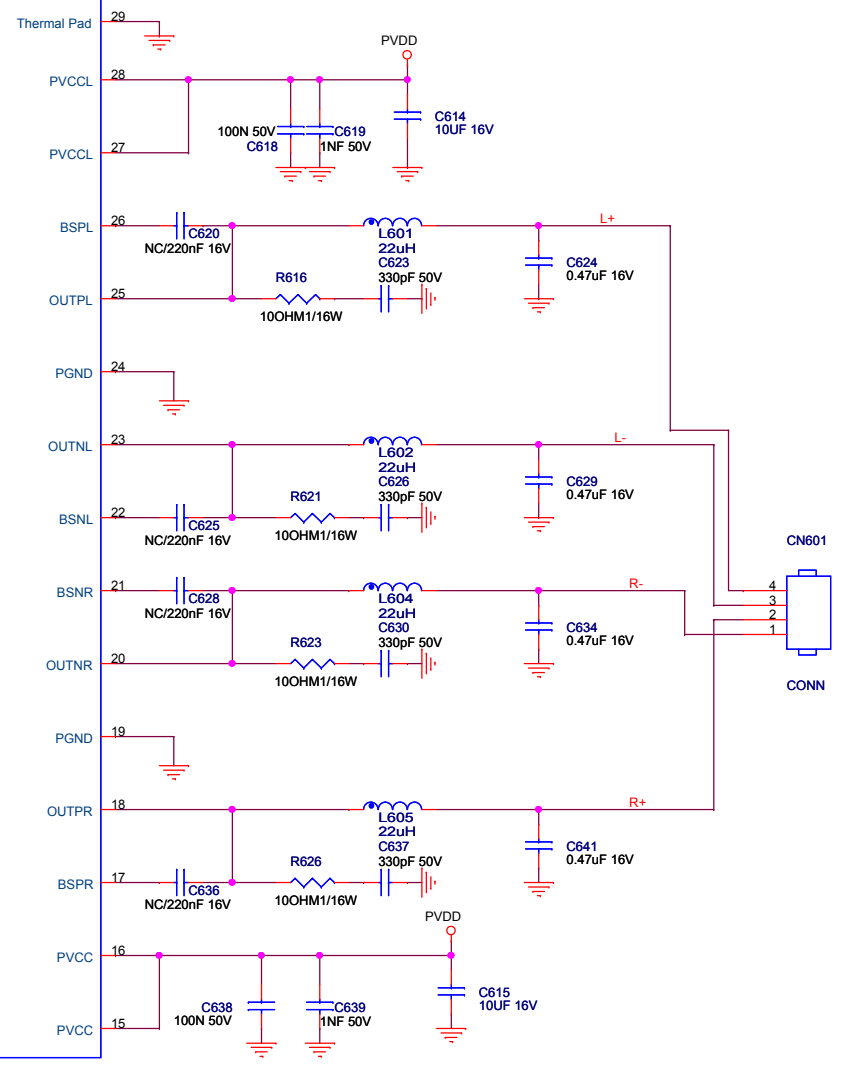
TPV (Top Victory Electronics Co., Ltd.)	OEM MODEL	NA	Size	A3
底隔爪鎖頭	GXXXX-M0A-000-0040	TPV MODEL	NA	Rev
Key Component	07. Tuner	PCB NAME	715GXXXX-M0A-000-0040	A
Date	Wednesday, November 20, 2013	Sheet	7 of 10	陈孝 <陈孝>



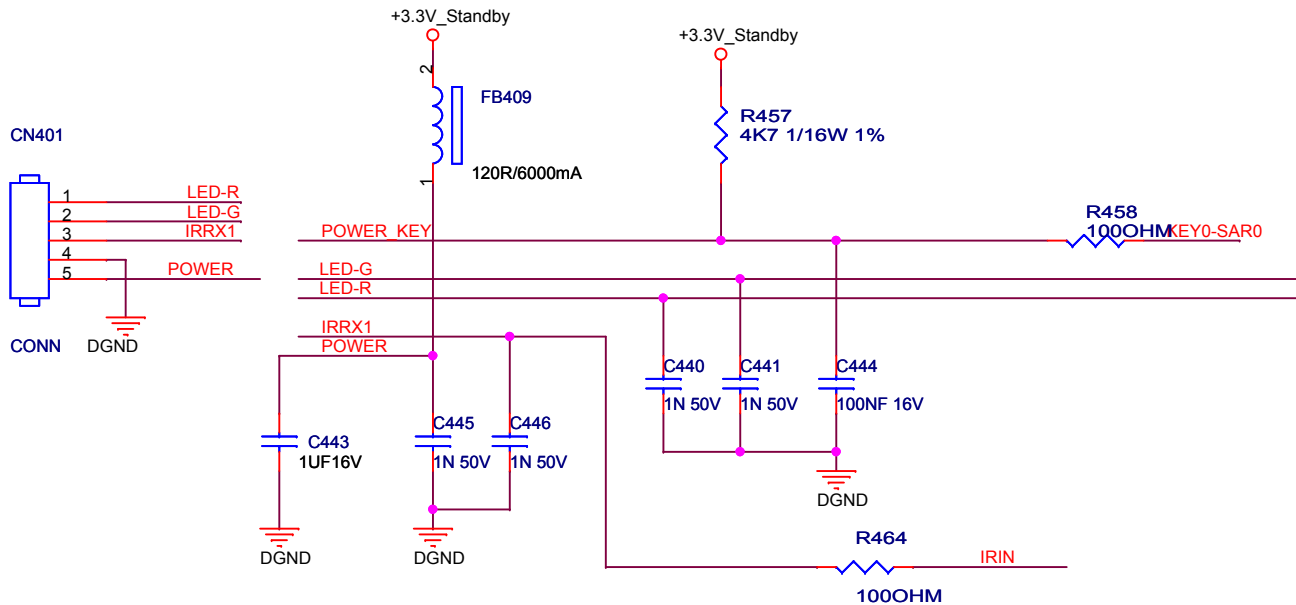
AMP_MUTE
Low: Mute disablde
High: Mute enable



1.2A Max

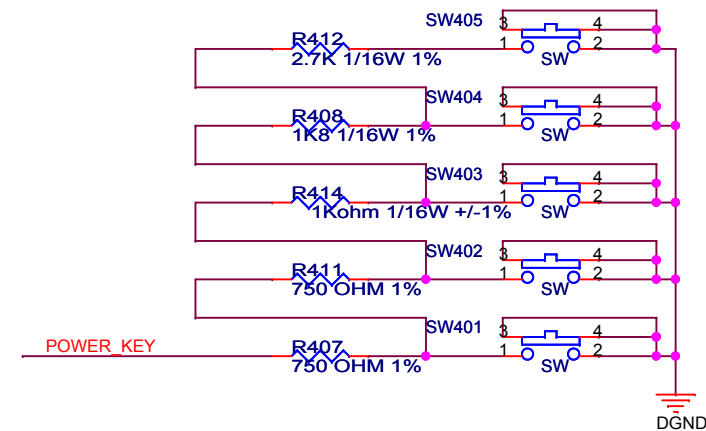
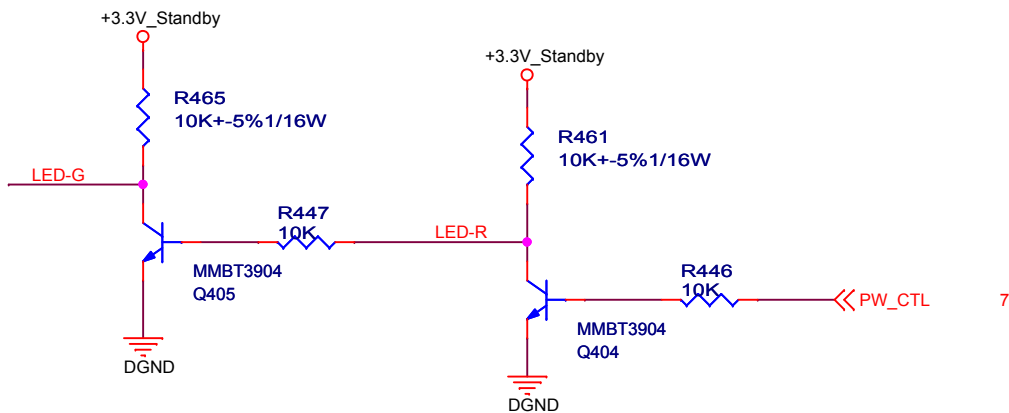


TPV (Top Victory Electronics Co., Ltd.)	OEM MODEL	NA	Size	B
結構瓜銀腹	GXXXX-M0A-000-0040	TPV MODEL	NA	Rev
Key Component	08. AUDIO AMP	PCB NAME	715GXXXX-M0A-000-0040	稱筆
Date	Wednesday, November 20, 2013	Sheet	8 of 12	<稱筆>



From Main Chip

2 KEY0-SAR0 << KEY0-SAR0
2 IRIN << IRIN



TPV (Top Victory Electronics Co., Ltd.)		OEM MODEL	NA	Size	A4
紙隔瓜網腹	GXXXX-M0A-000-0040	TPV MODEL	NA	Rev	A
Key Component	09. Keypad/IR	PCB NAME	715GXXXX-M0A-000-0040	称爹	<称爹>
Date	Wednesday, November 20, 2013	Sheet	9 of 10		

Layout trace 電流與 trace 寬度，1A=最少 1mm 以上寬度 銅厚:1(Oz)			
序號	電流值(I _{dc} or I _{rms})	最少銅寬(mm)	線路圖顏色
1		線路圖上標示	——

CONTENTS

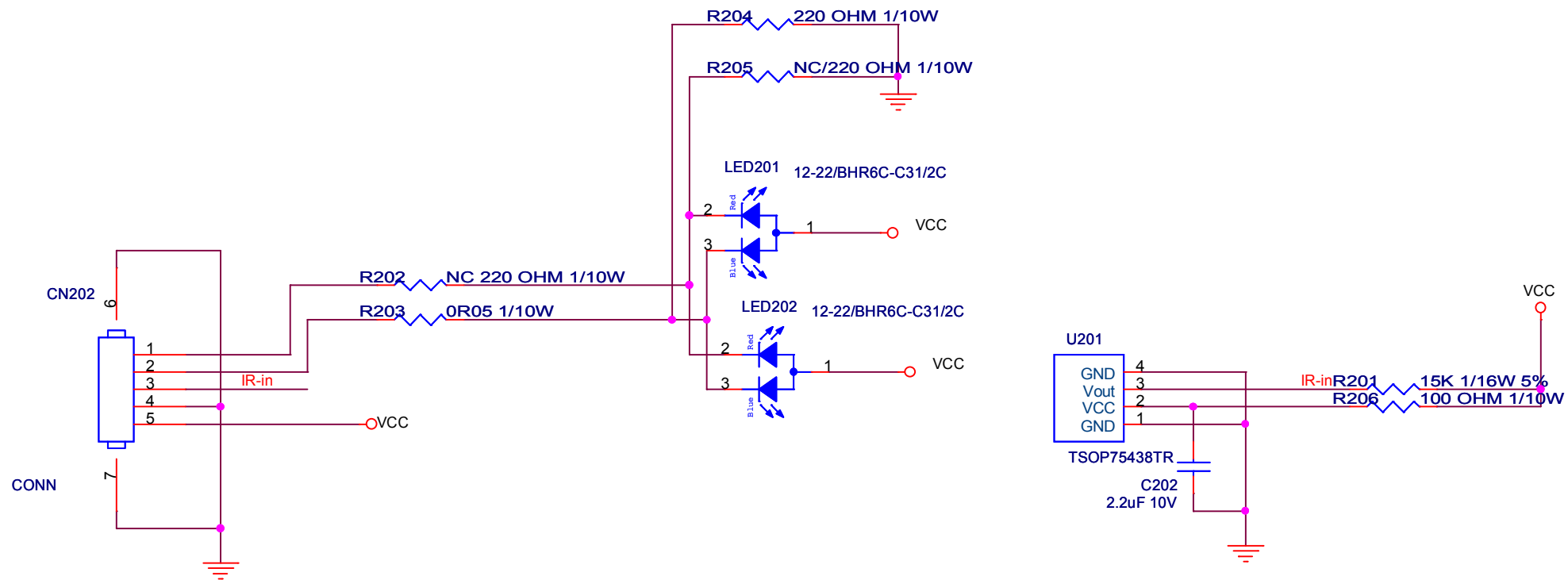
REVISION HISTORY

01.	Cover
02.	IR_board

Date	Author	Ver	Reviser reason	FN
12/19 2012	Harrison	A		
04/16 2013	Jamie Tsai		This IR_LED board modification is for LD58U3000 lighting logo design.	



T P V (Top Victory Electronics Co., Ltd.)		OEM MODEL	X	Size	Custom
原隔瓜鋼腹		TPV MODEL		Rev	A
Key Component	01-Cover	PCB NAME			
Date		Sheet	1 of 2	指蓋	<指蓋>



TPV (Top Victory Electronics Co., Ltd.)		OEM MODEL		Size	A
結構瓜網腹		TPV MODEL		Rev	A
Key Component	IR BOARD	PCB NAME		称爹	<称爹>
Date		Sheet	2 of 2		