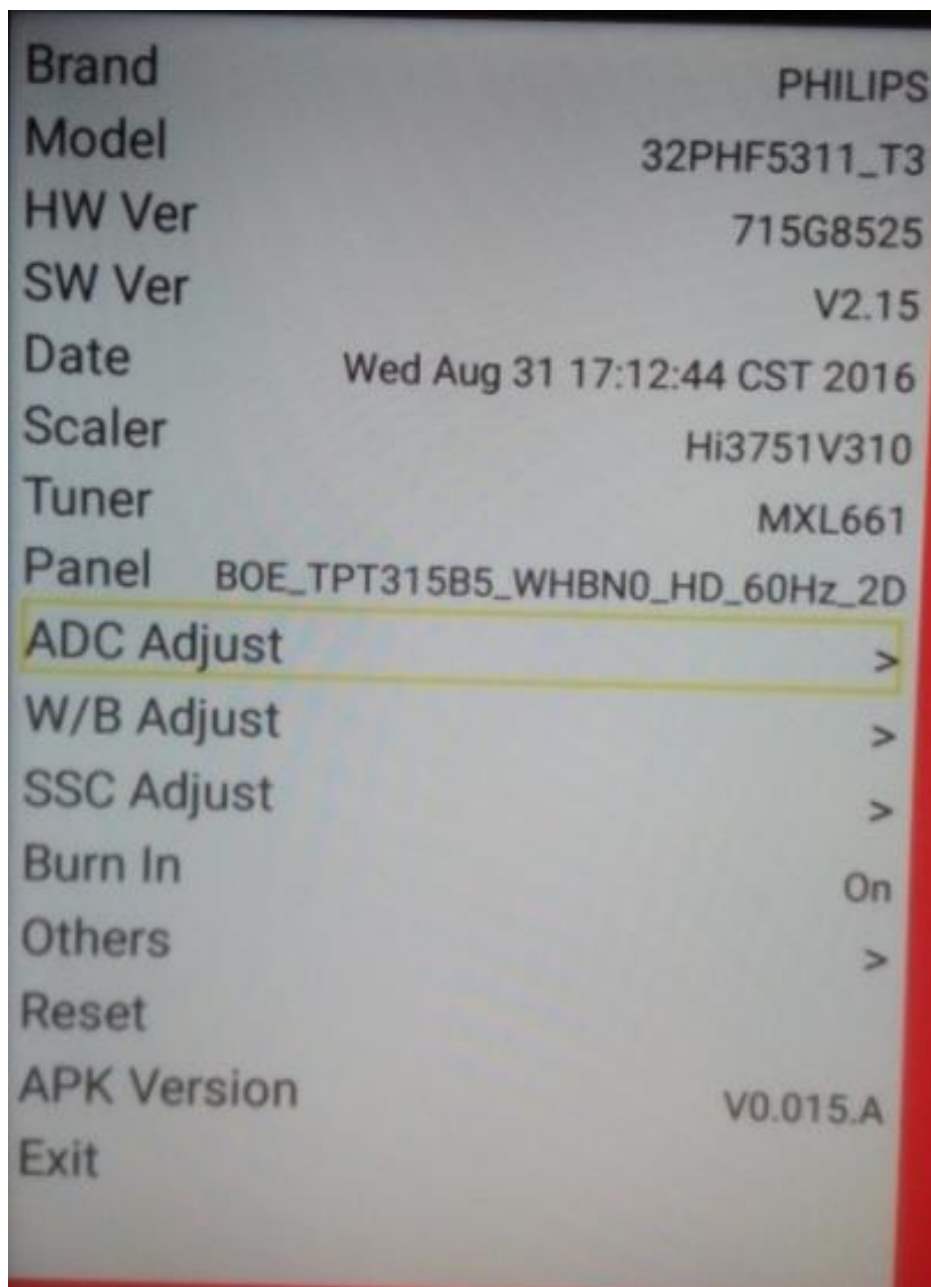


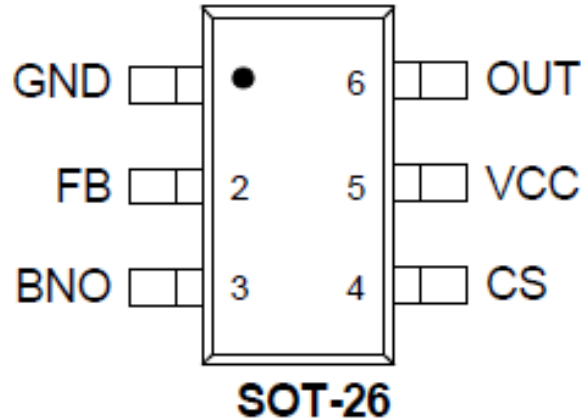
工厂模式调整：菜单+1999+返回



项目名称	功能说明	备注
Brand	机种品牌	不可调整
Model	机器型号	不可调整
HW Ver	硬体板号	不可调整
SW Ver	软体版本	不可调整
Date	软体发布日期	不可调整
Scaler	主芯片型号	不可调整
Tuner	高频头型号	不可调整
Panel	液晶屏型号	不可调整
ADC Adjust	ADC 调整	免调
W/B Adjust	白平衡调整	不建议调整
SSC Adjust	展频调整	不建议调整
Burn In	拷机模式	On/Off
Reset	复位	
Exit	退出工厂模式	

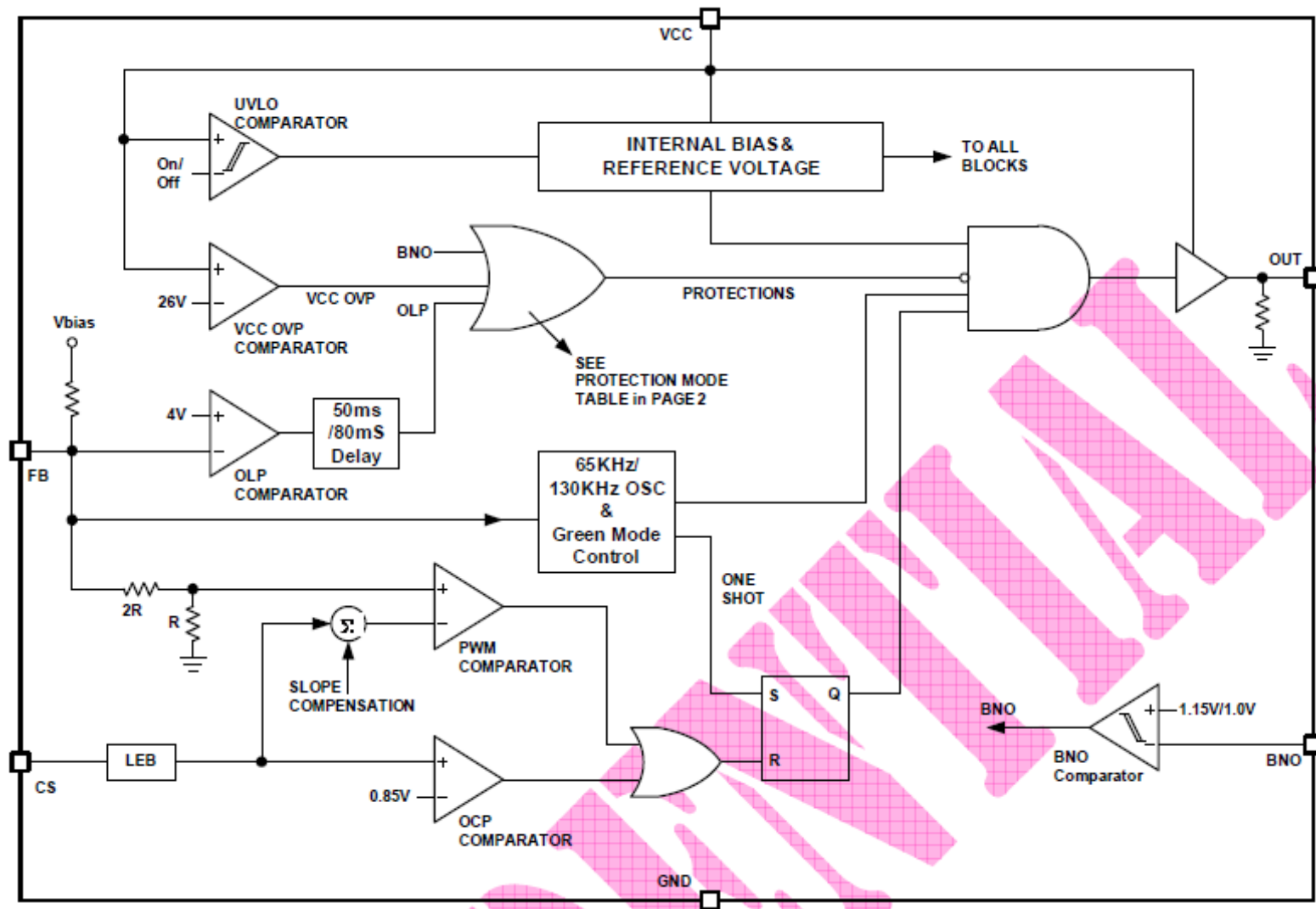
主要IC管脚及内部方框图

PIN DESCRIPTIONS

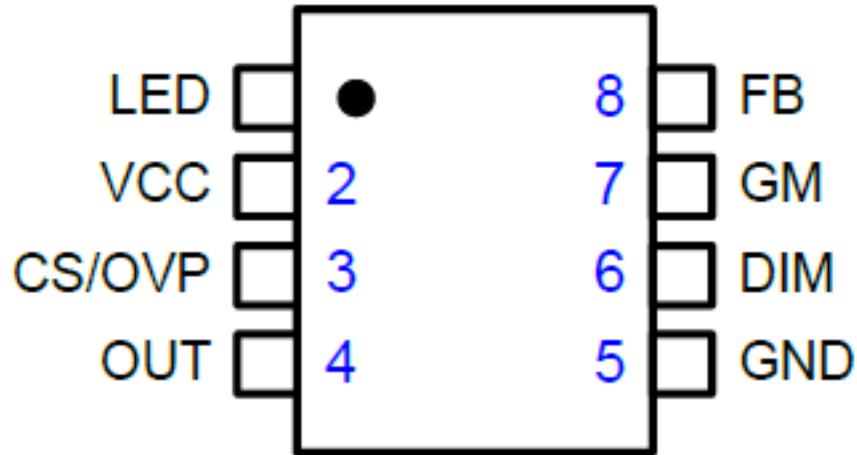


NAME	PIN NO.	DESCRIPTION
GND	1	Ground
FB	2	Voltage loop feedback pin. Connecting the collector of a photocoupler to this pin to close the voltage feedback loop.
BNO	3	Brownout Protection Pin. A resistor divider from this pin to bulk voltage to set the brownout level.
CS	4	Current loop feedback pin. Connect this pin to the primary sensing resistor to achieve the current mode control.
VCC	5	Supply voltage
OUT	6	MOSFET gate driver output

BLOCK DIAGRAM

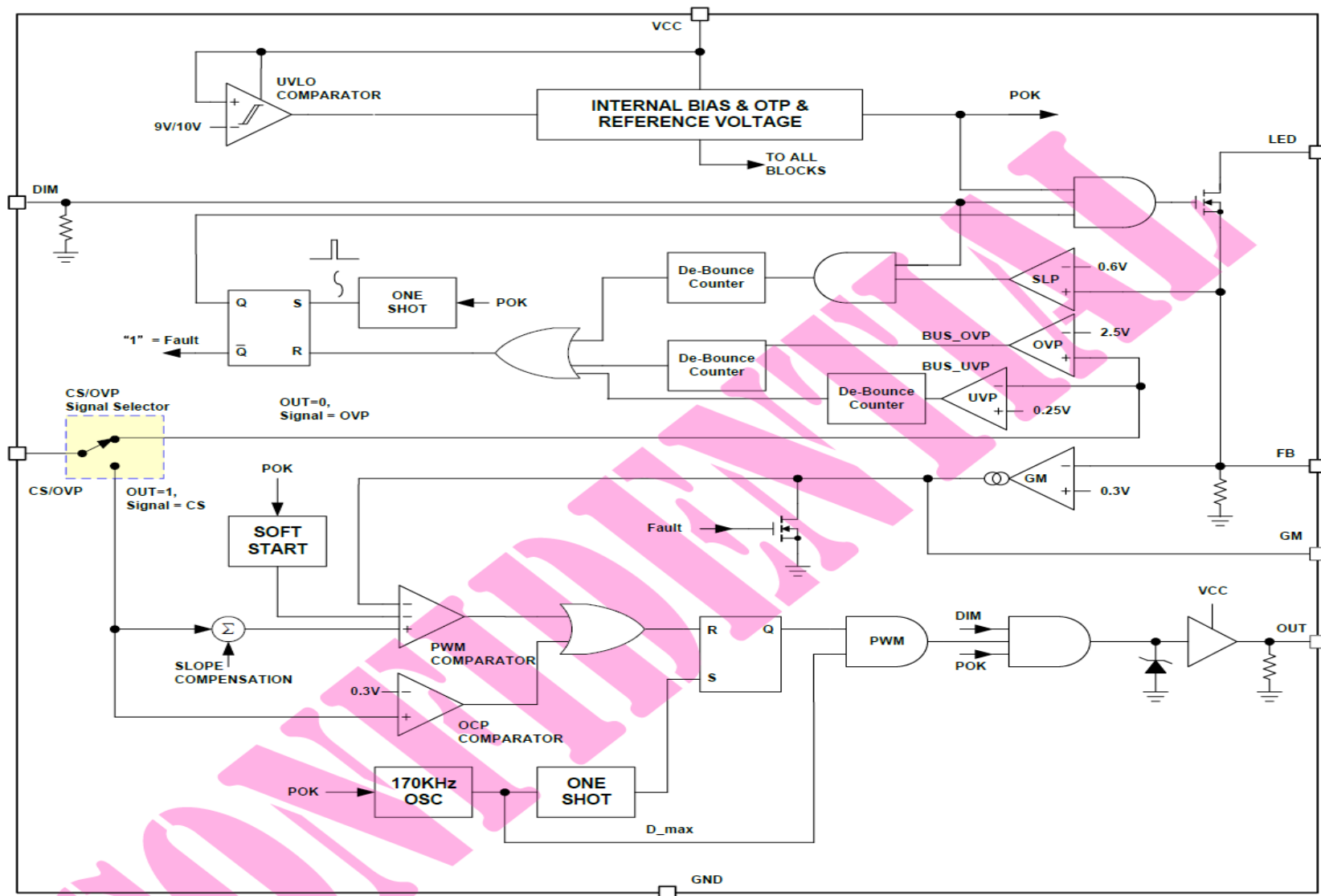


PIN DESCRIPTIONS



NAME	PIN NO.	DESCRIPTION
LED	1	Drain Terminal of Dimming MOSFET for LED PWM Dimming Control .
CS/OVP	3	Dual Function Pin for Both Over Voltage Protection of Boost Output and & Current Sensing of Boost Switch.
OUT	4	Output to Drive Boost MOSFET .
GM	7	Compensation Output .
FB	8	Source Terminal of Dimming MOSFET. It Is also the Feedback Input, Connecting LED Sensing Resistor .

BLOCK DIAGRAM



Thank you!

层次	项目	物料	物料描述	点位	组件数量
1	53	040G 58162435A	MANUAL P/N LABEL		1
1	7	0M1G 130 6120	SCREW M3 6		2
1	47	0M1G1030 5120	Screw		4
1	61	0M1G1030 6 47 CR3	SCREW M3 6		12
1	28	0Q1G 930 6 47 CR3	SCREW		2
1	51	0Q1G 940 18 47 CR3	screw		4
1	39	317GAAWF634XUG	WIFI USB IEEE 802.11 b/g/n SDWF-2F/GJ	317G01	1
1	36	378G0060498CAB	8 OHM 6W 132*45*39 0 UNIT	SP01	2
1	24	389G214A15NHS500X2	AC POWER CORD 1500+60 for China	ECN9903	1
1	3	389G214A15NYH500X2	AC POWER CORD 1500+60 for China	ECN9903	1
1	40	392GB1TA1A3C2C	BATTERY 1.5V 2P R03(KI)2S/PG		1
1	65	395GH20004AT078000	HARNESS 4Pin pitch2.0-B&R+B&W 320mm/200m	ECN602	1
1	64	395GH20004XT078000	HARNESS 4Pin pitch2.0-B&R+B&W 320mm/200m	ECN602	1
1	58	395GH20006AT010000	HARNESS 5P pitch1.25-6P pitch2.0 600mm	ECN102	1
1	59	395GH20006DT010000	HARNESS 5P pitch1.25-6P pitch2.0 600mm	ECN102	1
1	26	395GH20010DT054000	HARNESS 10P pitch2.0-5P pitch1.25 240mm	ECN400	1
1	35	395GH20010XT054000	HARNESS 10P pitch2.0-5P pitch1.25 240mm	ECN400	1
1	25	395GLT3032D0120000	LVDS CABLE 30P(1.0mm)-32P(2.0mm) 600mm	ECN402	1
1	21	395GLT3032X0120000	LVDS CABLE 30P(1.0mm)-32P(2.0mm) 600mm	ECN402	1
1	19	398GR08BCPHN0001C	REMOTE PHILIPS RL134B chinese	RC01	1
1	34	708TJ9078130WPZ1CH	PHILIPS 40(588 CH)		1
2	7	J44G6002514138	PAPER BOARD		1
2	1	J45G 77 6	PE PACKING		1.290
2	2	Q44G6002695 1A	PAPER BOARD		0.095
2	10	Q44G6002900 78	PAPER BOARD		0.095
2	8	Q44G9003 16	Corner paper		0.190
2	4	Q50G 4 10	TIE (Y1900221)		37
2	5	Q52G1301 9	BIG TAPE FOR PHILIPS		193
2	9	X07G009508302C	WOOD PALLET		0.024
2	3	X07G012508302C	WOOD PALLET		0.024
2	6	X50G500500600000JY	TIE		0.500
1	57	750TBV315B62BDN000	LCD TPT315B5-WHBN0.K S8D62B BJ TPV	E750	1
1	70	756TXGCB07D014040X	MCU ASSY		1
2	3	100TP7VK003D4X	PHP 32PHF5311/T3 EMMC V2.15 919A2417	SMTF-U406	1
2	2	356G3333004612	EMMC THGBMDG5D1LBAIT 4GB FBGA153	U406	1
1	67	CCPFG9DDX2	MAIN BOARD+POWER BOARD		1
2	40	033G3802 3 BH L	conn 2.0mm 3p	CN104	1
2	20	033G8029 3A H	CONN 3.96mm 3(2N)P R/A 11.88mm 9.5mm	CN9903	1
2	38	056G 139 9	IC EL817M(X) photocoupler DIP-4	IC9102	1
2	9	061G152M33852T HX	RST MOF 0.33R 5% 2WS	R9114	1
2	35	067G315M1016KV	EC 100UF 20% 35V 8*7	C620	1
2	13	067G315M1016KV	EC 100UF 20% 35V 8*7	C621	1
2	36	071G 55 29	FERRITE BEAD	FB8101	1
2	12	071G 55 29	FERRITE BEAD	FB8102	1
2	5	071G 55 29	FERRITE BEAD	FB9905	1
2	8	073G 174 76 V	INE FILTER 4mH MIN	L9902	1
2	32	073G 174192 X	LINE FILTER 30MH MIN ET20 0.8A	L9901	1
2	30	073G 253214 X	CHOKE COIL 47UH 10% ,HF	L8102	1
2	19	077G602S 3A HJ	TACT SW 4P 5.85 200g TSDBYC2202	SW401	1
2	14	088G302G7B1AYG	PHONE JACK R/A 7P BLACK 10.5mm	CN603	1

2 4	093G 50460519	BRIDGE KBP206G X0 2A 800V KBP 80A	BD9901	1
2 16	093G 60334	3HOTTKY SR506-44 5A 60V DO-201AD	D8601	1
2 26	093G 60335	DIODE SR515 5A/150V DO-201AD	D9108	1
2 27	093G 60335	DIODE SR515 5A/150V DO-201AD	D9109	1
2 41	093G 60335	DIODE SR515 5A/150V DO-201AD	D9107	1
2 24	093G 60927	SCHOTTKY PR1007G 1A 1000V DO-41	D9106	1
2 46	093G 60953	SCHOTTKY FR107G-A0 1A 1000V DO-41	D9105	1
2 6	311GW200A04ABX	WAFER 2.0mm 4P	CN602	1
2 2	311GW200A06ABX	WAFER 2.0mm 6P	CN8604	1
2 42	311GW200C06AAL	WAFER 2.0mm 6P	CN108	1
2 10	311GW200C10ABL	WAFER 2.0mm 10P R/A B2000W10HTKB	CN400	1
2 28	311GW200C32AAL	WAFER 2.0mm 32P	CN402	1
2 11	361G0058309LAW004A	NTCR 3R 15% 2.4W SCK10034LJY501	NR9901	1
2 3	363G107M334BEC	CAP X2 330NF 20% 275V 18*7*12.5 B32922E2	C9902	1
2 23	363G107M334BEC	CAP X2 330NF 20% 275V 18*7*12.5 B32922E2	C9901	1
2 37	367G215S680PHZ00AS	EC 68uF 20% 450V 12.5*40 2000 hr 620mA H	C9101	1
2 22	371G0055021H02	BEAD 6.5*12.5 700R 25% BF-I60100R-815	FB9908	1
2 25	371G0055021H02	BEAD 6.5*12.5 700R 25% BF-I60100R-815	FB9909	1
2 18	380GL32P171H00	X'FMR 480uH 10% 8u EQ28 BCK-12877-HA	T9101	1
2 44	388G078G137ACL0001	RCA JACK 6P 1*3 Y/W/R --	CN103	1
2 45	388G078G137AYG0001	RCA JACK 6P 1*3 Y/W/R --	CN103	1
2 29	388G352F6B3AXH	USB A TYPE R/A 6P 1*1 BLACK 8.4	CN102	1
2 15	388G352F6B3AXH	USB A TYPE R/A 6P 1*1 BLACK 8.4	CN101	1
2 34	388G510G502ACL	RF RF CONNECTOR 5P 1*1 GRAY 9.5MM	SH102	1
2 31	388G510H402AHC	RF IFP-013 4P 1*1 W --	TU100	1
2 1	705TXF93178	D9101 ASS'Y		1
3 1	051G 200 1	OIL FOR DISAPPEAR		0.018
3 4	093G 60329	IODE FMEN-220A 20A/100V TO-220	D9101	1
3 2	0M1G1730 8120	SCREW M3 8		1
3 3	Q90G0219 2	HEAT SINK 24.8 19.5 7	HS9101	1
2 43	AICCPFG9DDX2	MAIN BOARD+POWER BOARD FOR AI		1
3 11	065G 1K10193T	CAP CER 100PF 10% 1KV R	C9100	1
3 8	065G 1K22293S	CAP CER 2.2NF 10% 1KV R TAPING	C9102	1
3 9	065G306K47123R	CAP Y1 470PF 10% 250V Y5P	C9906	1
3 13	065G306K47123R	CAP Y1 470PF 10% 250V Y5P	C9907	1
3 2	065G306M15233R	CAP Y1 1.5NF 20% 250V Y5U	C9905	1
3 1	067G 5153316KT	EC 330UF 20% 35V 10*12 5000H EV	C9123	1
3 6	067G 5153316KT	EC 330UF 20% 35V 10*12 5000H EV	C9122	1
3 3	067G 5154714KT	EC 470UF 20% 25V 10*12 5000 hr 1.45A EV	C9118	1
3 7	067G 5154714KT	EC 470UF 20% 25V 10*12 5000 hr 1.45A EV	C9117	1
3 4	067G 5154797KB	EC 4.7UF 20% 50V 5*11 EY	C9106	1
3 14	071G 55 26 H	BEAD 3.5*6.0*0.8 127R 25% BF-I35060R-79	FB9910	1
3 10	084G 56 4W	FUSE 4A 250V	F9901	1
3 22	365G306J47063R	CAP Y1 47PF 5% 250V SL CD45SL2GA470JDSKA	C9904	1
3 19	365G306K2206WR	CAP Y1 22PF 10% 250V SL CT7-Y1-250V-06d	C9903	1
3 21	365G306K2206WR	CAP Y1 22PF 10% 250V SL CT7-Y1-250V-06d	C9908	1
3 5	367G415X3317KT	EC 330UF 20% 50V 12.5*12	C8602	1
3 16	SMTCCPFG9DDX2	MAIN BOARD+POWER BOARD FOR SMT		1
4 254	056G 158501	C/DC AS431ANTR-E1 150mA 40V SOT23-3	IC9103	1
4 489	056G 563114	LDO G1117-33T63UF 1A 3.3V SOT-223	U702	1
4 406	056G 662 18	ESD PROTECT AZ1045-04F.R7G DFN2510P10E	U105	1

4 275	056G 665528	IC IC G5250M1T1U 1A SOT23-5	U100	1
4 237	056G 665528	IC IC G5250M1T1U 1A SOT23-5	U101	1
4 430	057G 417511	MMBT3904	Q701	1
4 434	057G 417511	MMBT3904	Q503	1
4 426	057G 417511	MMBT3904	Q504	1
4 412	057G 417511	MMBT3904	Q702	1
4 441	057G 417511	MMBT3904	Q600	1
4 408	057G 417511	MMBT3904	Q404	1
4 621	057G 600941	MOSFET AOD482 32A 100V TO-252	Q8601	1
4 77	057G 760 4A	DTA144WN3/S SOT-23	Q8603	1
4 131	057G 763940	MOSFET AO3401A SOT-23	Q700	1
4 202	061G 1260008JT	RST NET 0R 5% 1/16W	RP504	1
4 205	061G 1260008JT	RST NET 0R 5% 1/16W	RP502	1
4 208	061G 1260008JT	RST NET 0R 5% 1/16W	RP503	1
4 232	061G 1260008JT	RST NET 0R 5% 1/16W	RP505	1
4 375	061G 1263308JY	RST CHIP ARRAY 33R 1/16W 5% 8P4R	RP404	1
4 484	061G 1263308JY	RST CHIP ARRAY 33R 1/16W 5% 8P4R	RP402	1
4 373	061G 1263308JY	RST CHIP ARRAY 33R 1/16W 5% 8P4R	RP403	1
4 370	061G 1263308JY	RST CHIP ARRAY 33R 1/16W 5% 8P4R	RP410	1
4 366	061G 1263308JY	RST CHIP ARRAY 33R 1/16W 5% 8P4R	RP411	1
4 364	061G 1263308JY	RST CHIP ARRAY 33R 1/16W 5% 8P4R	RP409	1
4 362	061G 1263308JY	RST CHIP ARRAY 33R 1/16W 5% 8P4R	RP405	1
4 359	061G 1263308JY	RST CHIP ARRAY 33R 1/16W 5% 8P4R	RP412	1
4 309	061G 1263308JY	RST CHIP ARRAY 33R 1/16W 5% 8P4R	RP406	1
4 327	061G 1263308JY	RST CHIP ARRAY 33R 1/16W 5% 8P4R	RP407	1
4 486	061G 1263308JY	RST CHIP ARRAY 33R 1/16W 5% 8P4R	RP413	1
4 487	061G 1263308JY	RST CHIP ARRAY 33R 1/16W 5% 8P4R	RP408	1
4 490	061G 1263308JY	RST CHIP ARRAY 33R 1/16W 5% 8P4R	RP400	1
4 495	061G 1263308JY	RST CHIP ARRAY 33R 1/16W 5% 8P4R	RP401	1
4 214	061G0402000 JF	RST CHIPR MAX0R05 1/16W FENGHUA	R461	1
4 216	061G0402000 JF	RST CHIPR MAX0R05 1/16W FENGHUA	R113	1
4 239	061G0402000 JF	RST CHIPR MAX0R05 1/16W FENGHUA	R541	1
4 241	061G0402000 JF	RST CHIPR MAX0R05 1/16W FENGHUA	R543	1
4 578	061G0402000 JF	RST CHIPR MAX0R05 1/16W FENGHUA	R7011	1
4 582	061G0402000 JF	RST CHIPR MAX0R05 1/16W FENGHUA	R544	1
4 586	061G0402000 JF	RST CHIPR MAX0R05 1/16W FENGHUA	R649	1
4 482	061G0402000 JT	RST 0402 0.05R MAX 1/16W -	R4121	1
4 294	061G0402000 JY	RST CHIPR MAX 0R05 OHM 1/16W YAGEO	R114	1
4 192	061G0402000 JY	RST CHIPR MAX 0R05 OHM 1/16W YAGEO	R148	1
4 189	061G0402000 JY	RST CHIPR MAX 0R05 OHM 1/16W YAGEO	R537	1
4 165	061G0402000 JY	RST CHIPR MAX 0R05 OHM 1/16W YAGEO	R117	1
4 161	061G0402000 JY	RST CHIPR MAX 0R05 OHM 1/16W YAGEO	R147	1
4 213	061G0402100 JY	RST CHIPR 10 OHM +-5% 1/16W YAGEO	R611	1
4 217	061G0402100 JY	RST CHIPR 10 OHM +-5% 1/16W YAGEO	R612	1
4 289	061G04021000FY	RST CHIP 100R 1/16W 1%	R508	1
4 293	061G04021000FY	RST CHIP 100R 1/16W 1%	R4035	1
4 2	061G04021001FY	RST CHIP 1K 1/16W 1%	R4049	1
4 3	061G04021001FY	RST CHIP 1K 1/16W 1%	R4057	1
4 21	061G04021001FY	RST CHIP 1K 1/16W 1%	R4051	1
4 42	061G04021001FY	RST CHIP 1K 1/16W 1%	R4056	1
4 46	061G04021001FY	RST CHIP 1K 1/16W 1%	R4054	1

4 50	061G04021001FY	RST CHIP 1K 1/16W 1%	R621	1
4 143	061G04021001FY	RST CHIP 1K 1/16W 1%	R4036	1
4 144	061G04021001FY	RST CHIP 1K 1/16W 1%	R4050	1
4 149	061G04021001FY	RST CHIP 1K 1/16W 1%	R4055	1
4 158	061G04021001FY	RST CHIP 1K 1/16W 1%	R4048	1
4 321	061G04021002FT	RST CHIPR 10K +-1% 1/16W TZAI YUAN	R133	1
4 322	061G04021002FT	RST CHIPR 10K +-1% 1/16W TZAI YUAN	R132	1
4 52	061G04021002FY	RST CHIP 10K 1/16W 1% YAGEO	R138	1
4 320	061G04021002FY	RST CHIP 10K 1/16W 1% YAGEO	R131	1
4 92	061G0402101 JF	RST CHIPR 100 OHM +-5% 1/16W FENGHUA	R161	1
4 468	061G0402101 JF	RST CHIPR 100 OHM +-5% 1/16W FENGHUA	R191	1
4 472	061G0402101 JF	RST CHIPR 100 OHM +-5% 1/16W FENGHUA	R162	1
4 592	061G0402101 JY	RST CHIPR 100 OHM +-5% 1/16W YAGEO	R524	1
4 574	061G0402101 JY	RST CHIPR 100 OHM +-5% 1/16W YAGEO	R124	1
4 564	061G0402101 JY	RST CHIPR 100 OHM +-5% 1/16W YAGEO	R123	1
4 562	061G0402101 JY	RST CHIPR 100 OHM +-5% 1/16W YAGEO	R118	1
4 551	061G0402101 JY	RST CHIPR 100 OHM +-5% 1/16W YAGEO	R125	1
4 497	061G0402101 JY	RST CHIPR 100 OHM +-5% 1/16W YAGEO	R534	1
4 269	061G0402101 JY	RST CHIPR 100 OHM +-5% 1/16W YAGEO	R617	1
4 249	061G0402101 JY	RST CHIPR 100 OHM +-5% 1/16W YAGEO	R4077	1
4 248	061G0402101 JY	RST CHIPR 100 OHM +-5% 1/16W YAGEO	R523	1
4 244	061G0402101 JY	RST CHIPR 100 OHM +-5% 1/16W YAGEO	R609	1
4 242	061G0402101 JY	RST CHIPR 100 OHM +-5% 1/16W YAGEO	R533	1
4 222	061G0402101 JY	RST CHIPR 100 OHM +-5% 1/16W YAGEO	R115	1
4 12	061G0402102 JY	RST CHIPR 1KOHM +-5% 1/16W YAGEO	R535	1
4 17	061G0402102 JY	RST CHIPR 1KOHM +-5% 1/16W YAGEO	R4002	1
4 37	061G0402102 JY	RST CHIPR 1KOHM +-5% 1/16W YAGEO	R631	1
4 40	061G0402102 JY	RST CHIPR 1KOHM +-5% 1/16W YAGEO	R620	1
4 53	061G0402102 JY	RST CHIPR 1KOHM +-5% 1/16W YAGEO	R518	1
4 54	061G0402102 JY	RST CHIPR 1KOHM +-5% 1/16W YAGEO	R7037	1
4 61	061G0402102 JY	RST CHIPR 1KOHM +-5% 1/16W YAGEO	R7020	1
4 63	061G0402102 JY	RST CHIPR 1KOHM +-5% 1/16W YAGEO	R7043	1
4 70	061G0402102 JY	RST CHIPR 1KOHM +-5% 1/16W YAGEO	R7038	1
4 73	061G0402102 JY	RST CHIPR 1KOHM +-5% 1/16W YAGEO	R7031	1
4 75	061G0402102 JY	RST CHIPR 1KOHM +-5% 1/16W YAGEO	R525	1
4 82	061G0402102 JY	RST CHIPR 1KOHM +-5% 1/16W YAGEO	R656	1
4 116	061G0402102 JY	RST CHIPR 1KOHM +-5% 1/16W YAGEO	R7050	1
4 121	061G0402102 JY	RST CHIPR 1KOHM +-5% 1/16W YAGEO	R527	1
4 450	061G0402103 JF	RST CHIPR 10KOHM +-5% 1/16W FENGHUA	R130	1
4 454	061G0402103 JF	RST CHIPR 10KOHM +-5% 1/16W FENGHUA	R625	1
4 521	061G0402103 JF	RST CHIPR 10KOHM +-5% 1/16W FENGHUA	R129	1
4 581	061G0402103 JF	RST CHIPR 10KOHM +-5% 1/16W FENGHUA	R731	1
4 99	061G0402103 JT	RST CHIP 10K 1/16W 5% TZAI YUAN	R651	1
4 167	061G0402103 JY	RST CHIPR 10KOHM +-5% 1/16W YAGEO	R4001	1
4 163	061G0402103 JY	RST CHIPR 10KOHM +-5% 1/16W YAGEO	R135	1
4 159	061G0402103 JY	RST CHIPR 10KOHM +-5% 1/16W YAGEO	R655	1
4 157	061G0402103 JY	RST CHIPR 10KOHM +-5% 1/16W YAGEO	R4003	1
4 153	061G0402103 JY	RST CHIPR 10KOHM +-5% 1/16W YAGEO	R530	1
4 150	061G0402103 JY	RST CHIPR 10KOHM +-5% 1/16W YAGEO	R4080	1
4 67	061G0402103 JY	RST CHIPR 10KOHM +-5% 1/16W YAGEO	R653	1
4 51	061G0402103 JY	RST CHIPR 10KOHM +-5% 1/16W YAGEO	R4000	1

4 47	061G0402103 JY	RST CHIPR 10KOHM +-5% 1/16W YAGEO	R528	1
4 39	061G0402103 JY	RST CHIPR 10KOHM +-5% 1/16W YAGEO	R7007	1
4 38	061G0402103 JY	RST CHIPR 10KOHM +-5% 1/16W YAGEO	R531	1
4 35	061G0402103 JY	RST CHIPR 10KOHM +-5% 1/16W YAGEO	R520	1
4 34	061G0402103 JY	RST CHIPR 10KOHM +-5% 1/16W YAGEO	R4007	1
4 33	061G0402103 JY	RST CHIPR 10KOHM +-5% 1/16W YAGEO	R521	1
4 32	061G0402103 JY	RST CHIPR 10KOHM +-5% 1/16W YAGEO	R7035	1
4 28	061G0402103 JY	RST CHIPR 10KOHM +-5% 1/16W YAGEO	R4006	1
4 27	061G0402103 JY	RST CHIPR 10KOHM +-5% 1/16W YAGEO	R4109	1
4 26	061G0402103 JY	RST CHIPR 10KOHM +-5% 1/16W YAGEO	R502	1
4 23	061G0402103 JY	RST CHIPR 10KOHM +-5% 1/16W YAGEO	R7009	1
4 10	061G0402103 JY	RST CHIPR 10KOHM +-5% 1/16W YAGEO	R112	1
4 9	061G0402103 JY	RST CHIPR 10KOHM +-5% 1/16W YAGEO	R4008	1
4 7	061G0402103 JY	RST CHIPR 10KOHM +-5% 1/16W YAGEO	R7017	1
4 4	061G0402103 JY	RST CHIPR 10KOHM +-5% 1/16W YAGEO	R519	1
4 1	061G0402103 JY	RST CHIPR 10KOHM +-5% 1/16W YAGEO	R134	1
4 152	061G0402104 JF	RST CHIPR 100KOHM +-5% 1/16W FENGHUA	R7036	1
4 162	061G0402104 JF	RST CHIPR 100KOHM +-5% 1/16W FENGHUA	R627	1
4 166	061G0402104 JF	RST CHIPR 100KOHM +-5% 1/16W FENGHUA	R7042	1
4 566	061G0402104 JY	RST CHIPR 100KOHM +-5% 1/16W YAGEO	R616	1
4 570	061G0402104 JY	RST CHIPR 100KOHM +-5% 1/16W YAGEO	R615	1
4 102	061G0402105 JT	RST CHIP R 1Mohm 1/16W +/-5% TZAI YUAN	R4071	1
4 31	061G04021053FT	RST 0402 105K 1/16W 1% TZAI YUAN	R727	1
4 30	061G04021201FY	RST CHIP 1.2K 1/16W 1%	R4101	1
4 319	061G04021212FF	RST 0402 12.1K 1% 1/16W FENGHUA	R7039	1
4 501	061G0402123 JY	RST CHIPR 12KOHM £«-5£¥ 1/16W YAGEO	R137	1
4 498	061G0402123 JY	RST CHIPR 12KOHM £«-5£¥ 1/16W YAGEO	R136	1
4 308	061G04021372FY	RST CHIP 13.7K 1/16W 1%	R728	1
4 245	061G0402152 JF	RST CHIPR 1.5KOHM +-5% 1/16W FENGHUA	R610	1
4 261	061G04021692FY	RST 0402 16.9K 1% 1/16W -	R7032	1
4 419	061G0402201 JY	RST CHIP 200R 1/16W 5% YAGEO	R4047	1
4 64	061G0402203 JF	RST CHIPR 20KOHM +-5% 1/16W FENGHUA	R622	1
4 29	061G0402203 JF	RST CHIPR 20KOHM +-5% 1/16W FENGHUA	R659	1
4 379	061G0402220 JY	RST CHIPR 22 OHM +-5% 1/16W YAGEO	R632	1
4 378	061G0402220 JY	RST CHIPR 22 OHM +-5% 1/16W YAGEO	R633	1
4 377	061G0402220 JY	RST CHIPR 22 OHM +-5% 1/16W YAGEO	R634	1
4 376	061G0402220 JY	RST CHIPR 22 OHM +-5% 1/16W YAGEO	R635	1
4 187	061G04022202FT	RST CHIP 22K 1/16W 1% TZAI YUAN	R7025	1
4 36	061G0402241 JY	RST CHIPR 240 OHM +-5% 1/16W YAGEO	R7048	1
4 22	061G0402241 JY	RST CHIPR 240 OHM +-5% 1/16W YAGEO	R4053	1
4 11	061G0402241 JY	RST CHIPR 240 OHM +-5% 1/16W YAGEO	R4046	1
4 83	061G04022702FT	RST 0402 27K 1% 1/16W	R509	1
4 81	061G04022702FT	RST 0402 27K 1% 1/16W	R7041	1
4 552	061G0402303 JF	RST 0402 30K 5% 1/16W	R624	1
4 443	061G0402330 JT	RST CHIP 33R 1/16W 5% TZAI YUAN	R127	1
4 446	061G0402330 JT	RST CHIP 33R 1/16W 5% TZAI YUAN	R642	1
4 464	061G0402330 JT	RST CHIP 33R 1/16W 5% TZAI YUAN	R126	1
4 542	061G0402330 JT	RST CHIP 33R 1/16W 5% TZAI YUAN	R641	1
4 231	061G0402330 JY	RST CHIPR 33 OHM £«-5£¥ 1/16W YAGEO	R4079	1
4 397	061G0402330 JY	RST CHIPR 33 OHM £«-5£¥ 1/16W YAGEO	R4072	1
4 529	061G0402330 JY	RST CHIPR 33 OHM £«-5£¥ 1/16W YAGEO	R4070	1

4 533	061G0402330 JY	RST CHIPR 33 OHM £«-5£¥ 1/16W YAGEO	R4076	1
4 127	061G0402330 JY	RST CHIPR 33 OHM £«-5£¥ 1/16W YAGEO	R4075	1
4 128	061G0402330 JY	RST CHIPR 33 OHM £«-5£¥ 1/16W YAGEO	R4069	1
4 199	061G0402330 JY	RST CHIPR 33 OHM £«-5£¥ 1/16W YAGEO	R4078	1
4 200	061G0402330 JY	RST CHIPR 33 OHM £«-5£¥ 1/16W YAGEO	R4067	1
4 203	061G0402330 JY	RST CHIPR 33 OHM £«-5£¥ 1/16W YAGEO	R4074	1
4 206	061G0402330 JY	RST CHIPR 33 OHM £«-5£¥ 1/16W YAGEO	R4068	1
4 226	061G0402330 JY	RST CHIPR 33 OHM £«-5£¥ 1/16W YAGEO	R4073	1
4 511	061G04023302FF	RST 0402 33K 1% 1/16W FENGHUA	R7023	1
4 451	061G0402472 JF	RST CHIPR 4.7KOHM +-5% 1/16W FENGHUA	R116	1
4 455	061G0402472 JF	RST CHIPR 4.7KOHM +-5% 1/16W FENGHUA	R603	1
4 461	061G0402472 JF	RST CHIPR 4.7KOHM +-5% 1/16W FENGHUA	R602	1
4 466	061G0402472 JF	RST CHIPR 4.7KOHM +-5% 1/16W FENGHUA	R643	1
4 499	061G0402472 JF	RST CHIPR 4.7KOHM +-5% 1/16W FENGHUA	R644	1
4 512	061G0402472 JF	RST CHIPR 4.7KOHM +-5% 1/16W FENGHUA	R4133	1
4 522	061G0402472 JF	RST CHIPR 4.7KOHM +-5% 1/16W FENGHUA	R4132	1
4 367	061G0402472 JY	RST 0402 4.7K 5% 1/16W RC0402JR-074K7L	R4052	1
4 369	061G0402472 JY	RST 0402 4.7K 5% 1/16W RC0402JR-074K7L	R529	1
4 372	061G0402472 JY	RST 0402 4.7K 5% 1/16W RC0402JR-074K7L	R7013	1
4 374	061G0402472 JY	RST 0402 4.7K 5% 1/16W RC0402JR-074K7L	R522	1
4 473	061G0402472 JY	RST 0402 4.7K 5% 1/16W RC0402JR-074K7L	R121	1
4 479	061G0402472 JY	RST 0402 4.7K 5% 1/16W RC0402JR-074K7L	R7010	1
4 491	061G0402472 JY	RST 0402 4.7K 5% 1/16W RC0402JR-074K7L	R122	1
4 577	061G0402472 JY	RST 0402 4.7K 5% 1/16W RC0402JR-074K7L	R7014	1
4 606	061G0402472 JY	RST 0402 4.7K 5% 1/16W RC0402JR-074K7L	R7018	1
4 608	061G0402472 JY	RST 0402 4.7K 5% 1/16W RC0402JR-074K7L	R4045	1
4 338	061G0402473 JY	RST CHIPR 47KOHM +-5% 1/16W YAGEO	R4081	1
4 332	061G0402473 JY	RST CHIPR 47KOHM +-5% 1/16W YAGEO	R648	1
4 8	061G0402474 JT	RST CHIP 470K 1/16W 5% TZAI YUAN	R7049	1
4 24	061G0402474 JT	RST CHIP 470K 1/16W 5% TZAI YUAN	R623	1
4 467	061G04025101FF	RST CHIP 5.1K 1/16W 1% FENGHUA	R613	1
4 508	061G04025101FF	RST CHIP 5.1K 1/16W 1% FENGHUA	R619	1
4 478	061G04025103FF	RST 0402 510K 1% 1/16W FENGHUA	R119	1
4 296	061G0402561 JF	RST CHIP 560R 1/16W 5% FENGHUA	R660	1
4 328	061G0402561 JF	RST CHIP 560R 1/16W 5% FENGHUA	R661	1
4 301	061G04026202FT	RST CHIP 62K 1/16W 1% TZAI YUAN	R735	1
4 401	061G04026801FY	RST CHIP 6K8 1/16W 1%	R4028	1
4 69	061G04027509FY	RST CHIP 75R 1/16W 1%	R128	1
4 265	061G0402823 JF	RST CHIPR 82KOHM +-5% 1/16W FENGHUA	R618	1
4 276	061G0402823 JF	RST CHIPR 82KOHM +-5% 1/16W FENGHUA	R614	1
4 330	061G06031001FY	RST CHIPR 1KOHM +-1% 1/10W YAGEO	R743	1
4 597	061G0603154 JY	RST CHIPR 150K +-5% 1/10W YAGEO	R7006	1
4 604	061G0603154 JY	RST CHIPR 150K +-5% 1/10W YAGEO	R4131	1
4 257	061G0603473 JY	RST CHIPR 47KOHM 1/10W YAGEO	R7004	1
4 272	061G0603473 JY	RST CHIPR 47KOHM 1/10W YAGEO	R4130	1
4 60	061G06037509FF	ST CHIPR 75 OHM +-1% 1/10W FENGHUA	R174	1
4 62	061G06037509FF	ST CHIPR 75 OHM +-1% 1/10W FENGHUA	R177	1
4 66	061G06037509FF	ST CHIPR 75 OHM +-1% 1/10W FENGHUA	R175	1
4 72	061G06037509FF	ST CHIPR 75 OHM +-1% 1/10W FENGHUA	R176	1
4 210	061G0805000 JT	RST 0805 0.05R MAX 1/8W	R9131	1
4 313	061G08051003FT	RST CHIP 100K 1/8W 1%	R9103	1

4 416	061G0805102 JT	RST CHIPR 1K OHM +- 5% 1/8W TZAI YUAN	R8615	1
4 442	061G0805103 JT	RST 0805 10K 5% 1/8W	R8613	1
4 532	061G0805103 JT	RST 0805 10K 5% 1/8W	R8603	1
4 536	061G0805103 JT	RST 0805 10K 5% 1/8W	R9123	1
4 541	061G0805103 JT	RST 0805 10K 5% 1/8W	R9121	1
4 346	061G08051501FT	RST CHIPR 1K5 +-1% 1/8W TZAI YAUN	R9128	1
4 615	061G08051623FF	.ST CHIPR 162KOHM +-1% 1/8W FENGHUA	R9136	1
4 13	061G08052208FT	RST 0805 2.2R 1% 1/8W	R729	1
4 122	061G08052402FF	RST CHIPR 24KOHM +-1% 1/8W FENGHUA	R9120	1
4 403	061G08053302FT	RST CHIP 33K 1/8W 1%	R8605	1
4 414	061G08053302FT	RST CHIP 33K 1/8W 1%	R8607	1
4 340	061G08053303FF	RST CHIP 330K 1/8W 1%	R9134	1
4 347	061G08053303FF	RST CHIP 330K 1/8W 1%	R9106	1
4 349	061G08053303FF	RST CHIP 330K 1/8W 1%	R9104	1
4 317	061G0805334 JT	RST CHIP 330K 1/8W 5% TZAI YUAN	R8616	1
4 95	061G0805335 JF	RST CHIPR 3.3 MOHM +-5% 1/8W	R9135	1
4 110	061G0805335 JF	RST CHIPR 3.3 MOHM +-5% 1/8W	R9101	1
4 136	061G0805335 JF	RST CHIPR 3.3 MOHM +-5% 1/8W	R9102	1
4 219	061G08053609FT	RST 0805 36R 1% 1/8W	R9111	1
4 629	061G08054709FT	RST 0805 47R 1% 1/8W	R8602	1
4 593	061G0805471 JT	RST CHIPR 470OHM +-5% 1/8W TZAI YUAN	R9115	1
4 156	061G08055101FT	RST CHIP 5K1 1/8W 1%	R9126	1
4 518	061G0805562 JF	RST CHIPR 5.6kOHM +-5% 1/8W FENGHUA	R8608	1
4 623	061G0805680 JF	RST CHIPR 68OHM +-5% 1/8W FENGHUA	R9112	1
4 627	061G0805680 JF	RST CHIPR 68OHM +-5% 1/8W FENGHUA	R8601	1
4 236	061G08056800FT	RST CHIP 680R 1/8W 1%	R9125	1
4 545	061G1206000 JY	RST CHIPR MAX0R05 1/4W YAGEO	R178	1
4 547	061G1206000 JY	RST CHIPR MAX0R05 1/4W YAGEO	R143	1
4 6	061G1206100 JY	RST CHIPR 10 OHM +-5% 1/4W YAGEO	R637	1
4 56	061G1206100 JY	RST CHIPR 10 OHM +-5% 1/4W YAGEO	R638	1
4 85	061G1206100 JY	RST CHIPR 10 OHM +-5% 1/4W YAGEO	R640	1
4 86	061G1206100 JY	RST CHIPR 10 OHM +-5% 1/4W YAGEO	R639	1
4 271	061G1206123 JT	RST CHIP 12K 5% 1/4W TZAI YUAN	R9137	1
4 300	061G1206123 JT	RST CHIP 12K 5% 1/4W TZAI YUAN	R9138	1
4 307	061G1206123 JT	RST CHIP 12K 5% 1/4W TZAI YUAN	R9132	1
4 326	061G1206123 JT	RST CHIP 12K 5% 1/4W TZAI YUAN	R9122	1
4 504	061G1206123 JT	RST CHIP 12K 5% 1/4W TZAI YUAN	R9139	1
4 59	061G12062007FF	RST CHIPR 0.2 OHM +-1% 1/4W FENGHUA	R8617	1
4 58	061G12062007FF	RST CHIPR 0.2 OHM +-1% 1/4W FENGHUA	R8604	1
4 57	061G12062007FF	RST CHIPR 0.2 OHM +-1% 1/4W FENGHUA	R8610	1
4 352	061G1206300 JT	RST CHIPR 30 OHM +-5% 1/4W TZAI YUAN	R9133	1
4 350	061G1206300 JT	RST CHIPR 30 OHM +-5% 1/4W TZAI YUAN	R9130	1
4 348	061G1206300 JT	RST CHIPR 30 OHM +-5% 1/4W TZAI YUAN	R9140	1
4 343	061G1206300 JT	RST CHIPR 30 OHM +-5% 1/4W TZAI YUAN	R9141	1
4 339	061G1206300 JT	RST CHIPR 30 OHM +-5% 1/4W TZAI YUAN	R9129	1
4 336	061G1206300 JT	RST CHIPR 30 OHM +-5% 1/4W TZAI YUAN	R9116	1
4 381	061G1206479 JT	RST 1206 4.7R 5% 1/4W	R9105	1
4 524	061G1206754 JT	RST CHIPR 750K +-5% 1/4W TZAI YUAN	R9901	1
4 519	061G1206754 JT	RST CHIPR 750K +-5% 1/4W TZAI YUAN	R9902	1
4 516	061G1206754 JT	RST CHIPR 750K +-5% 1/4W TZAI YUAN	R9905	1
4 509	061G1206754 JT	RST CHIPR 750K +-5% 1/4W TZAI YUAN	R9904	1

4 506	061G1206754 JT	RST CHIPR 750K +-5% 1/4W TZAI YUAN	R9906	1
4 465	061G1206754 JT	RST CHIPR 750K +-5% 1/4W TZAI YUAN	R9903	1
4 573	061G12068202FT	RST CHIPR 82KOHM +-1% 1/4W TZAI YUAN	R9109	1
4 560	061G12068202FT	RST CHIPR 82KOHM +-1% 1/4W TZAI YUAN	R9117	1
4 556	061G12068202FT	RST CHIPR 82KOHM +-1% 1/4W TZAI YUAN	R9107	1
4 550	061G12068202FT	RST CHIPR 82KOHM +-1% 1/4W TZAI YUAN	R9108	1
4 548	061G12068202FT	RST CHIPR 82KOHM +-1% 1/4W TZAI YUAN	R9110	1
4 546	061G12068202FT	RST CHIPR 82KOHM +-1% 1/4W TZAI YUAN	R9118	1
4 525	065G040210031J A	CAP 0402 10PF 5% 50V NP0 -	C4090	1
4 544	065G040210031J A	CAP 0402 10PF 5% 50V NP0 -	C131	1
4 78	065G040210131J T	CAP CHIP 0402 100pF 50V NPO	C4008	1
4 575	065G040210232K F	CAP 0402 1NF 10% 50V X7R	C654	1
4 590	065G040210232K F	CAP 0402 1NF 10% 50V X7R	C7132	1
4 428	065G040210232K Y	CAP 0402 1NF 10% 50V X7R CC0402KRX7R9BB	C128	1
4 432	065G040210232K Y	CAP 0402 1NF 10% 50V X7R CC0402KRX7R9BB	C4033	1
4 500	065G040210232K Y	CAP 0402 1NF 10% 50V X7R CC0402KRX7R9BB	C4012	1
4 505	065G040210232K Y	CAP 0402 1NF 10% 50V X7R CC0402KRX7R9BB	C125	1
4 250	065G040210332K A	CAP 0402 10NF 10% 50V X7R	C133	1
4 263	065G040210412K A	CAP CHIP 0402 100nF K 16V X7R	C4046	1
4 259	065G040210412K A	CAP CHIP 0402 100nF K 16V X7R	C7111	1
4 255	065G040210412K A	CAP CHIP 0402 100nF K 16V X7R	C507	1
4 251	065G040210412K A	CAP CHIP 0402 100nF K 16V X7R	C4025	1
4 247	065G040210412K A	CAP CHIP 0402 100nF K 16V X7R	C102	1
4 234	065G040210412K A	CAP CHIP 0402 100nF K 16V X7R	C7077	1
4 230	065G040210412K A	CAP CHIP 0402 100nF K 16V X7R	C4100	1
4 227	065G040210412K A	CAP CHIP 0402 100nF K 16V X7R	C4022	1
4 223	065G040210412K A	CAP CHIP 0402 100nF K 16V X7R	C7112	1
4 218	065G040210412K A	CAP CHIP 0402 100nF K 16V X7R	C7110	1
4 215	065G040210412K A	CAP CHIP 0402 100nF K 16V X7R	C144	1
4 212	065G040210412K A	CAP CHIP 0402 100nF K 16V X7R	C4040	1
4 211	065G040210412K A	CAP CHIP 0402 100nF K 16V X7R	C7113	1
4 209	065G040210412K A	CAP CHIP 0402 100nF K 16V X7R	C7104	1
4 207	065G040210412K A	CAP CHIP 0402 100nF K 16V X7R	C4049	1
4 204	065G040210412K A	CAP CHIP 0402 100nF K 16V X7R	C137	1
4 198	065G040210412K A	CAP CHIP 0402 100nF K 16V X7R	C611	1
4 196	065G040210412K A	CAP CHIP 0402 100nF K 16V X7R	C7059	1
4 194	065G040210412K A	CAP CHIP 0402 100nF K 16V X7R	C7091	1
4 154	065G040210412K A	CAP CHIP 0402 100nF K 16V X7R	C7042	1
4 146	065G040210412K A	CAP CHIP 0402 100nF K 16V X7R	C4050	1
4 145	065G040210412K A	CAP CHIP 0402 100nF K 16V X7R	C7031	1
4 140	065G040210412K A	CAP CHIP 0402 100nF K 16V X7R	C4031	1
4 139	065G040210412K A	CAP CHIP 0402 100nF K 16V X7R	C4081	1
4 135	065G040210412K A	CAP CHIP 0402 100nF K 16V X7R	C506	1
4 421	065G040210412K A	CAP CHIP 0402 100nF K 16V X7R	C7014	1
4 396	065G040210412K A	CAP CHIP 0402 100nF K 16V X7R	C7045	1
4 393	065G040210412K A	CAP CHIP 0402 100nF K 16V X7R	C7118	1
4 391	065G040210412K A	CAP CHIP 0402 100nF K 16V X7R	C115	1
4 390	065G040210412K A	CAP CHIP 0402 100nF K 16V X7R	C7049	1
4 389	065G040210412K A	CAP CHIP 0402 100nF K 16V X7R	C7048	1
4 388	065G040210412K A	CAP CHIP 0402 100nF K 16V X7R	C146	1
4 387	065G040210412K A	CAP CHIP 0402 100nF K 16V X7R	C4021	1

4 386	065G040210412K	A	CAP CHIP 0402 100nF K 16V X7R	C7078	1
4 385	065G040210412K	A	CAP CHIP 0402 100nF K 16V X7R	C612	1
4 384	065G040210412K	A	CAP CHIP 0402 100nF K 16V X7R	C7060	1
4 382	065G040210412K	A	CAP CHIP 0402 100nF K 16V X7R	C4026	1
4 274	065G040210412K	A	CAP CHIP 0402 100nF K 16V X7R	C4028	1
4 270	065G040210412K	A	CAP CHIP 0402 100nF K 16V X7R	C7069	1
4 266	065G040210412K	A	CAP CHIP 0402 100nF K 16V X7R	C143	1
4 423	065G040210412K	A	CAP CHIP 0402 100nF K 16V X7R	C4045	1
4 425	065G040210412K	A	CAP CHIP 0402 100nF K 16V X7R	C7108	1
4 429	065G040210412K	A	CAP CHIP 0402 100nF K 16V X7R	C7056	1
4 433	065G040210412K	A	CAP CHIP 0402 100nF K 16V X7R	C107	1
4 436	065G040210412K	A	CAP CHIP 0402 100nF K 16V X7R	C619	1
4 438	065G040210412K	A	CAP CHIP 0402 100nF K 16V X7R	C4017	1
4 537	065G040210412K	A	CAP CHIP 0402 100nF K 16V X7R	C7079	1
4 534	065G040210412K	A	CAP CHIP 0402 100nF K 16V X7R	C112	1
4 530	065G040210412K	A	CAP CHIP 0402 100nF K 16V X7R	C4043	1
4 528	065G040210412K	A	CAP CHIP 0402 100nF K 16V X7R	C4039	1
4 517	065G040210412K	A	CAP CHIP 0402 100nF K 16V X7R	C4041	1
4 515	065G040210412K	A	CAP CHIP 0402 100nF K 16V X7R	C7082	1
4 514	065G040210412K	A	CAP CHIP 0402 100nF K 16V X7R	C109	1
4 503	065G040210412K	A	CAP CHIP 0402 100nF K 16V X7R	C7051	1
4 502	065G040210412K	A	CAP CHIP 0402 100nF K 16V X7R	C7125	1
4 449	065G040210412K	A	CAP CHIP 0402 100nF K 16V X7R	C147	1
4 400	065G040210412K	A	CAP CHIP 0402 100nF K 16V X7R	C4101	1
4 404	065G040210412K	A	CAP CHIP 0402 100nF K 16V X7R	C159	1
4 409	065G040210412K	A	CAP CHIP 0402 100nF K 16V X7R	C160	1
4 413	065G040210412K	A	CAP CHIP 0402 100nF K 16V X7R	C145	1
4 417	065G040210412K	A	CAP CHIP 0402 100nF K 16V X7R	C4084	1
4 20	065G040210412K	A	CAP CHIP 0402 100nF K 16V X7R	C4042	1
4 25	065G040210412K	A	CAP CHIP 0402 100nF K 16V X7R	C4034	1
4 79	065G040210412K	A	CAP CHIP 0402 100nF K 16V X7R	C4023	1
4 80	065G040210412K	A	CAP CHIP 0402 100nF K 16V X7R	C4092	1
4 84	065G040210412K	A	CAP CHIP 0402 100nF K 16V X7R	C4044	1
4 89	065G040210412K	A	CAP CHIP 0402 100nF K 16V X7R	C7081	1
4 91	065G040210412K	A	CAP CHIP 0402 100nF K 16V X7R	C132	1
4 93	065G040210412K	A	CAP CHIP 0402 100nF K 16V X7R	C140	1
4 94	065G040210412K	A	CAP CHIP 0402 100nF K 16V X7R	C7114	1
4 98	065G040210412K	A	CAP CHIP 0402 100nF K 16V X7R	C4088	1
4 101	065G040210412K	A	CAP CHIP 0402 100nF K 16V X7R	C7117	1
4 105	065G040210412K	A	CAP CHIP 0402 100nF K 16V X7R	C4018	1
4 107	065G040210412K	A	CAP CHIP 0402 100nF K 16V X7R	C4083	1
4 108	065G040210412K	A	CAP CHIP 0402 100nF K 16V X7R	C4082	1
4 109	065G040210412K	A	CAP CHIP 0402 100nF K 16V X7R	C7034	1
4 111	065G040210412K	A	CAP CHIP 0402 100nF K 16V X7R	C4024	1
4 112	065G040210412K	A	CAP CHIP 0402 100nF K 16V X7R	C7055	1
4 114	065G040210412K	A	CAP CHIP 0402 100nF K 16V X7R	C4032	1
4 115	065G040210412K	A	CAP CHIP 0402 100nF K 16V X7R	C4020	1
4 117	065G040210412K	A	CAP CHIP 0402 100nF K 16V X7R	C7016	1
4 119	065G040210412K	A	CAP CHIP 0402 100nF K 16V X7R	C7068	1
4 123	065G040210412K	A	CAP CHIP 0402 100nF K 16V X7R	C141	1
4 124	065G040210412K	A	CAP CHIP 0402 100nF K 16V X7R	C7107	1

4 129	065G040210412K	A	CAP CHIP 0402 100nF K 16V X7R	C4027	1
4 130	065G040210412K	A	CAP CHIP 0402 100nF K 16V X7R	C7071	1
4 291	065G040210412K	F	CAP 0402 100NF 10% 16V X7R	C200	1
4 180	065G0402105A5K	A	CAP CHIP 0402 1UF K 10V X5R	C122	1
4 182	065G0402105A5K	A	CAP CHIP 0402 1UF K 10V X5R	C7086	1
4 184	065G0402105A5K	A	CAP CHIP 0402 1UF K 10V X5R	C7095	1
4 190	065G0402105A5K	A	CAP CHIP 0402 1UF K 10V X5R	C7123	1
4 288	065G0402105A5K	A	CAP CHIP 0402 1UF K 10V X5R	C7109	1
4 292	065G0402105A5K	A	CAP CHIP 0402 1UF K 10V X5R	C4048	1
4 295	065G0402105A5K	A	CAP CHIP 0402 1UF K 10V X5R	C7011	1
4 310	065G0402105A5K	A	CAP CHIP 0402 1UF K 10V X5R	C4099	1
4 311	065G0402105A5K	A	CAP CHIP 0402 1UF K 10V X5R	C7058	1
4 314	065G0402105A5K	A	CAP CHIP 0402 1UF K 10V X5R	C121	1
4 315	065G0402105A5K	A	CAP CHIP 0402 1UF K 10V X5R	C4029	1
4 331	065G0402105A5K	A	CAP CHIP 0402 1UF K 10V X5R	C7085	1
4 334	065G0402105A5K	A	CAP CHIP 0402 1UF K 10V X5R	C4030	1
4 337	065G0402105A5K	A	CAP CHIP 0402 1UF K 10V X5R	C7043	1
4 341	065G0402105A5K	A	CAP CHIP 0402 1UF K 10V X5R	C7092	1
4 360	065G0402105A5K	A	CAP CHIP 0402 1UF K 10V X5R	C4047	1
4 361	065G0402105A5K	A	CAP CHIP 0402 1UF K 10V X5R	C7122	1
4 363	065G0402105A5K	A	CAP CHIP 0402 1UF K 10V X5R	C7124	1
4 365	065G0402105A5K	A	CAP CHIP 0402 1UF K 10V X5R	C7088	1
4 368	065G0402105A5K	A	CAP CHIP 0402 1UF K 10V X5R	C153	1
4 371	065G0402105A5K	A	CAP CHIP 0402 1UF K 10V X5R	C7089	1
4 399	065G0402105A5K	A	CAP CHIP 0402 1UF K 10V X5R	C7121	1
4 410	065G0402105A5K	A	CAP CHIP 0402 1UF K 10V X5R	C7098	1
4 435	065G0402105A5K	A	CAP CHIP 0402 1UF K 10V X5R	C7087	1
4 439	065G0402105A5K	A	CAP CHIP 0402 1UF K 10V X5R	C7106	1
4 447	065G0402105A5K	A	CAP CHIP 0402 1UF K 10V X5R	C7100	1
4 448	065G0402105A5K	A	CAP CHIP 0402 1UF K 10V X5R	C7057	1
4 469	065G0402105A5K	A	CAP CHIP 0402 1UF K 10V X5R	C7126	1
4 470	065G0402105A5K	A	CAP CHIP 0402 1UF K 10V X5R	C4015	1
4 471	065G0402105A5K	A	CAP CHIP 0402 1UF K 10V X5R	C7090	1
4 474	065G0402105A5K	A	CAP CHIP 0402 1UF K 10V X5R	C7062	1
4 476	065G0402105A5K	A	CAP CHIP 0402 1UF K 10V X5R	C7105	1
4 481	065G0402105A5K	A	CAP CHIP 0402 1UF K 10V X5R	C7076	1
4 483	065G0402105A5K	A	CAP CHIP 0402 1UF K 10V X5R	C136	1
4 485	065G0402105A5K	A	CAP CHIP 0402 1UF K 10V X5R	C7094	1
4 488	065G0402105A5K	A	CAP CHIP 0402 1UF K 10V X5R	C7120	1
4 492	065G0402105A5K	A	CAP CHIP 0402 1UF K 10V X5R	C7099	1
4 493	065G0402105A5K	A	CAP CHIP 0402 1UF K 10V X5R	C120	1
4 494	065G0402105A5K	A	CAP CHIP 0402 1UF K 10V X5R	C154	1
4 179	065G0402105A5K	A	CAP CHIP 0402 1UF K 10V X5R	C4016	1
4 174	065G0402105A5K	A	CAP CHIP 0402 1UF K 10V X5R	C7096	1
4 173	065G0402105A5K	A	CAP CHIP 0402 1UF K 10V X5R	C7097	1
4 601	065G040210605M	A	CAP 0402 10UF 20% 6.3V X5R CL05A106MQ5N	C7015	1
4 96	065G040222031J	F	CAP 0402 22PF 5% 50V NP0	C634	1
4 97	065G040222031J	F	CAP 0402 22PF 5% 50V NP0	C635	1
4 118	065G040222031J	F	CAP 0402 22PF 5% 50V NP0	C7020	1
4 134	065G040222031J	F	CAP 0402 22PF 5% 50V NP0	C637	1
4 138	065G040222031J	F	CAP 0402 22PF 5% 50V NP0	C636	1

4 229	065G040222232K	F	CAP 0402 2.2NF K 50V X7R	C142	1
4 246	065G040222415K	Y	CAP CHIP 0402 220nF 16V X5R	C7072	1
4 262	065G040222415K	Y	CAP CHIP 0402 220nF 16V X5R	C7052	1
4 44	065G040233031J	F	CAP 0402 33PF 5% 50V NP0	C117	1
4 41	065G040233031J	F	CAP 0402 33PF 5% 50V NP0	C124	1
4 45	065G040233031J	F	CAP 0402 33PF 5% 50V NP0	C139	1
4 168	065G040233031J	F	CAP 0402 33PF 5% 50V NP0	C138	1
4 49	065G040233131J	A	LCC 0402 330pF 50V NP0 +-5%	C603	1
4 553	065G040239031J	A	CAP CHIP 0402 39PF J 50V NPO	C4087	1
4 558	065G040239031J	A	CAP CHIP 0402 39PF J 50V NPO	C4086	1
4 329	065G040247031J	Y	CAP 0402 47PF 5% 50V NP0	C148	1
4 475	065G040247031J	Y	CAP 0402 47PF 5% 50V NP0	C657	1
4 477	065G040247031J	Y	CAP 0402 47PF 5% 50V NP0	C149	1
4 480	065G040247031J	Y	CAP 0402 47PF 5% 50V NP0	C607	1
4 596	065G040247312K	F	CAP 0402 47NF 10% 16V X7R	C151	1
4 599	065G040247312K	F	CAP 0402 47NF 10% 16V X7R	C150	1
4 612	065G040247312K	F	CAP 0402 47NF 10% 16V X7R	C119	1
4 617	065G040247312K	F	CAP 0402 47NF 10% 16V X7R	C118	1
4 392	065G0402474A5K	F	CAP 0402 470NF 10% 10V X5R	C4036	1
4 395	065G0402474A5K	F	CAP 0402 470NF 10% 10V X5R	C4035	1
4 402	065G0402474A5K	F	CAP 0402 470NF 10% 10V X5R	C4014	1
4 405	065G0402474A5K	F	CAP 0402 470NF 10% 10V X5R	C7115	1
4 415	065G0402474A5K	F	CAP 0402 470NF 10% 10V X5R	C4013	1
4 424	065G0402474A5K	F	CAP 0402 470NF 10% 10V X5R	C4037	1
4 427	065G0402474A5K	F	CAP 0402 470NF 10% 10V X5R	C7116	1
4 420	065G040268132K	F	CAP 0402 680PF 10% 50V X7R	C656	1
4 422	065G040268132K	F	CAP 0402 680PF 10% 50V X7R	C655	1
4 297	065G060310432K	F	CAP CHIP 0603 0.1UF K 50V X7R	C617	1
4 344	065G060310432K	F	CAP CHIP 0603 0.1UF K 50V X7R	C615	1
4 353	065G060310432K	F	CAP CHIP 0603 0.1UF K 50V X7R	C4007	1
4 356	065G060310432K	F	CAP CHIP 0603 0.1UF K 50V X7R	C731	1
4 325	065G060310432K	Y	CAP 0603 100NF 10% 50V X7R	C4116	1
4 589	065G060310512K	A	CAP 0603 1UF 10% 16V X7R	C608	1
4 576	065G060310512K	A	CAP 0603 1UF 10% 16V X7R	C508	1
4 572	065G060310512K	A	CAP 0603 1UF 10% 16V X7R	C605	1
4 561	065G060310512K	A	CAP 0603 1UF 10% 16V X7R	C604	1
4 431	065G060310512K	T	CAP 0603 1UF 10% 16V X7R EMK107B7105KA	C7131	1
4 298	065G060310605M	A	MLCC 0603 10UF 6.3V X5R +-20%	C7017	1
4 460	065G060310605M	M	CAP 0603 10UF 20% 6.3V X5R	C7032	1
4 463	065G060310605M	M	CAP 0603 10UF 20% 6.3V X5R	C108	1
4 513	065G060310605M	M	CAP 0603 10UF 20% 6.3V X5R	C630	1
4 520	065G060310605M	M	CAP 0603 10UF 20% 6.3V X5R	C631	1
4 526	065G060310605M	M	CAP 0603 10UF 20% 6.3V X5R	C7044	1
4 527	065G060310605M	M	CAP 0603 10UF 20% 6.3V X5R	C629	1
4 531	065G060310605M	M	CAP 0603 10UF 20% 6.3V X5R	C7064	1
4 538	065G060310605M	M	CAP 0603 10UF 20% 6.3V X5R	C113	1
4 539	065G060310605M	M	CAP 0603 10UF 20% 6.3V X5R	C7033	1
4 543	065G060310605M	M	CAP 0603 10UF 20% 6.3V X5R	C7063	1
4 610	065G060310605M	M	CAP 0603 10UF 20% 6.3V X5R	C130	1
4 76	065G060322232K	Y	.AP CHIP 0603 2N2 50V X7R +/-10%	C705	1
4 286	065G060322422K	T	CAP CHIP0603 220NF K 25V X7R	C7001	1

4 253	065G0603225A5K	A	CAP 0603 2.2UF K 10V X5R	C732	1
4 281	065G0603225A5K	A	CAP 0603 2.2UF K 10V X5R	C7065	1
4 282	065G0603225A5K	A	CAP 0603 2.2UF K 10V X5R	C7075	1
4 141	065G060347131J	Y	CAP CHIP 0603 470P 50V NP0 +/-5%	C625	1
4 193	065G060347131J	Y	CAP CHIP 0603 470P 50V NP0 +/-5%	C627	1
4 197	065G060347131J	Y	CAP CHIP 0603 470P 50V NP0 +/-5%	C628	1
4 258	065G060347131J	Y	CAP CHIP 0603 470P 50V NP0 +/-5%	C626	1
4 177	065G0603475A5K	A	CAP 0603 4.7UF 10% 10V X5R CL10A475KP8NN	C602	1
4 188	065G0603475A5K	A	CAP 0603 4.7UF 10% 10V X5R CL10A475KP8NN	C4089	1
4 191	065G0603475A5K	A	CAP 0603 4.7UF 10% 10V X5R CL10A475KP8NN	C601	1
4 628	065G080510031J	Y	CAP CHIP 0805 10PF J 50V NPO	C8609	1
4 569	065G080510231J	F	CAP 0805 1NF 5% 50V NPO	C8607	1
4 605	065G080510231J	F	CAP 0805 1NF 5% 50V NPO	C8612	1
4 355	065G080510232K	M	CAP 0805 1NF 10% 50V X7R	C9109	1
4 535	065G080510432K	Y	CAP CHIP 0805 100N 50V X7R +/-10%	C8611	1
4 549	065G080510432K	Y	CAP CHIP 0805 100N 50V X7R +/-10%	C9108	1
4 554	065G080510432K	Y	CAP CHIP 0805 100N 50V X7R +/-10%	C8608	1
4 555	065G080510432K	Y	CAP CHIP 0805 100N 50V X7R +/-10%	C8604	1
4 557	065G080510432K	Y	CAP CHIP 0805 100N 50V X7R +/-10%	C8610	1
4 563	065G080510432K	Y	CAP CHIP 0805 100N 50V X7R +/-10%	C8603	1
4 567	065G080510432K	Y	CAP CHIP 0805 100N 50V X7R +/-10%	C9113	1
4 171	065G080510532K	M	CAP 0805 1UF 10% 50V X7R	C9104	1
4 172	065G080510532K	M	CAP 0805 1UF 10% 50V X7R	C9110	1
4 583	065G080510615K	A	CAP 0805 10UF 10% 16V X5R	C7127	1
4 585	065G080510615K	A	CAP 0805 10UF 10% 16V X5R	C4113	1
4 607	065G080510615K	A	CAP 0805 10UF 10% 16V X5R	C7128	1
4 299	065G080510615K	T	CHIP 10uF 16V X5R 0805	C715	1
4 185	065G0805106A5K	A	CAP 0805 10UF 10% 10V X5R	C197	1
4 394	065G080522131J	Y	CAP CHIP 0805 220P 50V NP0 +/-5%	C9105	1
4 233	065G080522232K	Y	CAP CHIP 0805 2N2 50V X7R +/-10%	C9119	1
4 142	065G080522432K	M	CAP 0805 220nF 10% 50V X7R GRM21BR71H224	C8613	1
4 164	065G080522432K	Y	CAP CHIP 0805 220N 50V X7R +/-10%	C9112	1
4 496	065G080522605M	M	CAP 0805 22UF 20% 6.3V X5R	C740	1
4 579	065G080522605M	M	CAP 0805 22UF 20% 6.3V X5R	C729	1
4 580	065G080522605M	M	CAP 0805 22UF 20% 6.3V X5R	C730	1
4 584	065G080522605M	M	CAP 0805 22UF 20% 6.3V X5R	C738	1
4 588	065G080522605M	M	CAP 0805 22UF 20% 6.3V X5R	C735	1
4 600	065G080522605M	M	CAP 0805 22UF 20% 6.3V X5R	C737	1
4 609	065G080522605M	M	CAP 0805 22UF 20% 6.3V X5R	C736	1
4 614	065G080522605M	M	CAP 0805 22UF 20% 6.3V X5R	C739	1
4 18	065G080568412K	F	CAP CHIP 0805 680NF K 16V X7R	C613	1
4 103	065G080568412K	F	CAP CHIP 0805 680NF K 16V X7R	C618	1
4 133	065G080568412K	F	CAP CHIP 0805 680NF K 16V X7R	C616	1
4 137	065G080568412K	F	CAP CHIP 0805 680NF K 16V X7R	C614	1
4 398	065G120610272K	Y	CAP 1206 1NF 10% 500V X7R	C9111	1
4 418	065G120610272K	Y	CAP 1206 1NF 10% 500V X7R	C9121	1
4 611	065G120610272K	Y	CAP 1206 1NF 10% 500V X7R	C8606	1
4 228	065G120622272K	Y	CER 1206 2N2 500V X7R 10%	C9107	1
4 224	065G120622272K	Y	CER 1206 2N2 500V X7R 10%	C9120	1
4 267	067G311C1013LT		EC SMD 100UF 20% 16V 6.3*7.7 3000 hr 2	C4093	1
4 380	070GHDCP500HDC		HDCP CODE	HDCP-U406	1

4 559	071G 56K121 TA	HIP BEAD 120R/6000mA HCB2012KF-121T60	FB600	1
4 357	071G 59A121 TA	CHIP BEAD 120R/3000mA HCB1608KF-121T30	FB700	1
4 565	073G 6333810M	CHIP INDUCTOR 0.33UH 10% 0.75R 100mA	L102	1
4 55	073G253S 71 M	SMD CHOKE 2.2UH 20% 0.020R 8.2A	L705	1
4 126	088G 34019K AV	HDMI HEADER R/A 19P BLACK H=8.4	CN501	1
4 598	088G 34019K AV	HDMI HEADER R/A 19P BLACK H=8.4	CN502	1
4 87	093G 6433S	switching diode BAV99	D100	1
4 240	093G 39S923 T	ZENER BZX84B6V8 6.8 0.5 SOT-23	ZD700	1
4 354	093G 60S 37 T	SCHOTTKY SM260A 2A 40V DO-214AC	D700	1
4 279	093G 64S500 SU	ESD MLVG04025R0QV05BP INPAQ	ZD600	1
4 283	093G 64S500 SU	ESD MLVG04025R0QV05BP INPAQ	ZD406	1
4 284	093G 64S500 SU	ESD MLVG04025R0QV05BP INPAQ	ZD601	1
4 285	093G 64S500 SU	ESD MLVG04025R0QV05BP INPAQ	ZD404	1
4 287	093G 64S500 SU	ESD MLVG04025R0QV05BP INPAQ	ZD405	1
4 74	093G 64S526SEM	SWITCHING BAS316WS 250mA 100V SOD323	D501	1
4 407	353G0045502J00	LAN FILTER S16013 LF	T100	1
4 175	356G0379006600	AC/DC PF6003AG SOT-26	IC9101	1
4 351	356G056313200C00HF	LDO AZ1117CH-1.2TRG1 1A 1.2V SOT-223	U704	1
4 318	356G0563223607	LDO LD1117AG33AA3AR 1A 3.3V SOT-223	U706	1
4 594	356G0563252601	LDO UZ1084G33TN3R 5A 3.3V TO-252	U707	1
4 290	356G0566024600	Silicon Tuner MxL661-AG-R	U102	1
4 5	356G0568577605	SCALER Hi3751ARBCV3100D00 PBGA-577	U401	1
4 88	356G0615004613	DRAM NT5CB256M16DP-EK 4Gb VFBGA-96	U402	1
4 90	356G0615004613	DRAM NT5CB256M16DP-EK 4Gb VFBGA-96	U403	1
4 160	356G0616048601	AUDIO AD82584D-LG48NAR 20 E-LQFP-48L 7x7	U601	1
4 568	356G0616136	AUDIO AD22650-QH14NAR - TSSOP-14	U600	1
4 411	356G0700008603	LED DRIVER PF7708BS SOP-8	IC8601	1
4 65	356G3333004612	EMMC THGBMDG5D1LBAIT 4GB FBGA153	U406	1
4 333	356GD563006183	DC/DC SY8009BABC 2A 3.3V SOT23-6	U701	1
4 220	356GD563006610	DC/DC TPS563201DDCR 17V 3A SOT-23-6	U708	1
4 221	356GD563006610	DC/DC TPS563201DDCR 17V 3A SOT-23-6	U703	1
4 587	356GD563010205	DC/DC SY8366QNC 6A 28V QFN3x3-10	U710	1
4 453	357G07630620HF	.F MOSFET 2N7002K_R1_00001 0.3A 60V	Q8602	1
4 456	357G07630620HF	.F MOSFET 2N7002K_R1_00001 0.3A 60V	Q500	1
4 304	357G0763650600	MOSFET TK8P65W 7.8A 650V DPAK	Q9101	1
4 591	357G0763A06	MOSFET AO3407A -25A -30V 1.4W SOT23	Q401	1
4 280	361G04022492FY	RST 0402 24.9K 1% 1/16W RC0402FR-0724K9	R7034	1
4 571	361G04022492FY	RST 0402 24.9K 1% 1/16W RC0402FR-0724K9	R7040	1
4 43	361G04025108FT	RST 0402 5.1 ohm 1% 1/16W SMD04025R1FT	R110	1
4 48	361G04025108FT	RST 0402 5.1 ohm 1% 1/16W SMD04025R1FT	R109	1
4 147	361G04025108FT	RST 0402 5.1 ohm 1% 1/16W SMD04025R1FT	R108	1
4 169	361G04025108FT	RST 0402 5.1 ohm 1% 1/16W SMD04025R1FT	R111	1
4 148	361G06031330FY	RST 0603 133Ω 1% 1/10W N/A	R101	1
4 323	361G12061508FY	RST 1206 1.5R 1% 1/4W RC1206FR-071R5L	R8618	1
4 342	361G12061508FY	RST 1206 1.5R 1% 1/4W RC1206FR-071R5L	R8619	1
4 71	361G12061808FT	RST 1206 1.8R 1% 1/4W SMD12061R8F	R8614	1
4 68	361G12061808FT	RST 1206 1.8R 1% 1/4W SMD12061R8F	R8606	1
4 16	361G12061808FT	RST 1206 1.8R 1% 1/4W SMD12061R8F	R8609	1
4 15	361G12061808FT	RST 1206 1.8R 1% 1/4W SMD12061R8F	R8611	1
4 243	365G040222502K000M	CAP 0402 2.2uF 20% 6.3V X7S GRM155C70J2	C7080	1
4 312	365G040222505M000T	CAP 0402 2.2UF 20% 6.3V X5R JMK105BJ225M	C4085	1

4 183	365G040222505M000T	CAP 0402 2.2uF 20% 6.3V X5R JMK105BJ225M	C4001	1
4 616	365G040247931C000M	CAP 0402 4.7pF 0.25pF 50V NP0 GRM1555C1H	C104	1
4 603	365G040247931C000M	CAP 0402 4.7pF 0.25pF 50V NP0 GRM1555C1H	C105	1
4 458	365G060310606M000A	CAP 0603 10uF 20% 6.3V X6S CL10X106MQ8N	C4102	1
4 452	365G060310606M000A	CAP 0603 10uF 20% 6.3V X6S CL10X106MQ8N	C7103	1
4 445	365G060310606M000A	CAP 0603 10uF 20% 6.3V X6S CL10X106MQ8N	C103	1
4 440	365G060310606M000A	CAP 0603 10uF 20% 6.3V X6S CL10X106MQ8N	C100	1
4 437	365G060310606M000A	CAP 0603 10uF 20% 6.3V X6S CL10X106MQ8N	C7084	1
4 645	365G060322606M000M	CAP 0603 22uF 20% 6.3V X6S GRM188C80J226	C4038	1
4 644	365G060322606M000M	CAP 0603 22uF 20% 6.3V X6S GRM188C80J226	C7018	1
4 643	365G060322606M000M	CAP 0603 22uF 20% 6.3V X6S GRM188C80J226	C7019	1
4 642	365G060322606M000M	CAP 0603 22uF 20% 6.3V X6S GRM188C80J226	C4019	1
4 641	365G060322606M000M	CAP 0603 22uF 20% 6.3V X6S GRM188C80J226	C7119	1
4 650	365G060322606M000T	CAP 0603 22uF 20% 6.3V X6S JMK107BC6226	C7119	1
4 649	365G060322606M000T	CAP 0603 22uF 20% 6.3V X6S JMK107BC6226	C4019	1
4 648	365G060322606M000T	CAP 0603 22uF 20% 6.3V X6S JMK107BC6226	C7019	1
4 647	365G060322606M000T	CAP 0603 22uF 20% 6.3V X6S JMK107BC6226	C7018	1
4 646	365G060322606M000T	CAP 0603 22uF 20% 6.3V X6S JMK107BC6226	C4038	1
4 19	365G080522606M000M	CAP 0805 22uF 20% 6.3V X6S GRM21BC80J22	C7083	1
4 14	365G080522606M000M	CAP 0805 22uF 20% 6.3V X6S GRM21BC80J22	C7101	1
4 306	365G080547172K000F	CAP 0805 470pF 10% 500V X7R -	C126	1
4 178	365G120610292K000F	CAP 1206 1nF 10% 2KV X7R 1206B102K202NT	C196	1
4 507	365G120647282K000Y	CAP 1206 4.7nf 10% 1KV X7R CC1206KKX7RC	C180	1
4 462	365G120647282K000Y	CAP 1206 4.7nf 10% 1KV X7R CC1206KKX7RC	C182	1
4 459	365G120647282K000Y	CAP 1206 4.7nf 10% 1KV X7R CC1206KKX7RC	C176	1
4 457	365G120647282K000Y	CAP 1206 4.7nf 10% 1KV X7R CC1206KKX7RC	C127	1
4 444	365G120647282K000Y	CAP 1206 4.7nf 10% 1KV X7R CC1206KKX7RC	C161	1
4 305	365G120647282K000Y	CAP 1206 4.7nf 10% 1KV X7R CC1206KKX7RC	C135	1
4 303	365G120647282K000Y	CAP 1206 4.7nf 10% 1KV X7R CC1206KKX7RC	C181	1
4 302	365G120647282K000Y	CAP 1206 4.7nf 10% 1KV X7R CC1206KKX7RC	C179	1
4 510	365G120647282K000Y	CAP 1206 4.7nf 10% 1KV X7R CC1206KKX7RC	C168	1
4 523	365G120647282K000Y	CAP 1206 4.7nf 10% 1KV X7R CC1206KKX7RC	C183	1
4 618	370G0MAC642CNT	Buy key CNTV腾讯版MAC for 海	MAC-U406	1
4 316	370GHDCP603PHP	CD CD HDCP2.2 code for Wifi Miracast	HDCP2-U413	1
4 176	371G042P121M02	CHIP BEAD 0402 120R 25% MGLB1005M121T1R3	FB601	1
4 181	371G042P121M02	CHIP BEAD 0402 120R 25% MGLB1005M121T1R3	FB704	1
4 358	371G042P121M02	CHIP BEAD 0402 120R 25% MGLB1005M121T1R3	FB712	1
4 151	371G042P221M00	CHIP BEAD 0402 220R 25% MGLB1005M221T1R	FB706	1
4 186	371G042P221M00	CHIP BEAD 0402 220R 25% MGLB1005M221T1R	FB705	1
4 104	371G042U102C00	CHIP BEAD 0402 1000 25% FCM1005KF-102T0	FB101	1
4 120	371G042U102C00	CHIP BEAD 0402 1000 25% FCM1005KF-102T0	FB100	1
4 345	373G253S239D00	SMD CHOKE 75R 25% 280mA 75R BW21S7511B(L	L101	1
4 100	373G253S245M00	SMD CHOKE 22uH 20% 1A 0.225R MPIT4030-2	L603	1
4 106	373G253S245M00	SMD CHOKE 22uH 20% 1A 0.225R MPIT4030-2	L600	1
4 113	373G253S245M00	SMD CHOKE 22uH 20% 1A 0.225R MPIT4030-2	L601	1
4 238	373G253S245M00	SMD CHOKE 22uH 20% 1A 0.225R MPIT4030-2	L602	1
4 125	373G253S356M00	0804D09092	L704	1
4 201	373G253S356M00	0804D09092	L703	1
4 595	373G253S526M00	SMD CHOKE 4.7uH 20% 0.9A 0.444R -	L701	1
4 383	388G342G8B5FCL	RJ45 R/A 8P 1*1 BLACK 10.75mm	CN105	1
4 235	393G006432S0HF	SWITCHING 1N4148W 0.15A 75V SOD-123	D9103	1

4 252	393G006432S0HF	SWITCHING 1N4148W 0.15A 75V SOD-123	D9104	1
4 260	393G006432S0HF	SWITCHING 1N4148W 0.15A 75V SOD-123	D8604	1
4 626	393G006432S0HF	SWITCHING 1N4148W 0.15A 75V SOD-123	D8602	1
4 278	393G022S60100J	CRYSTAL NXH16.000AE18F-KAB8-PA 16MHz 18	X100	1
4 335	393G022S66300J	CRYSTAL NXXK24.000AE18F-KAB7-2 24.000MHz	X400	1
4 602	393G039SA2900T	ZENER BZT52-B15 15V 0.41 SOD-123	ZD9101	1
4 651	715G8525C01000004Y	MAIN PCB FR4 DS 193*140*1.6mm	E715	1
2 39	P90T0051301	Heat Sink	HS401	1
2 17	Q90G6119 6	EAT SINK	HS601	1
1 8	IRPFGXA9	IR BOARD 715G6726R010030040		1
2 1	SMTIRPFGXA9	IR BOARD FOR SMT		1
3 15	061G0402472 JT	RST CHIP 4K7 1/16W 5% TZAI YUAN	R001	1
3 16	709T67260ZS001	COMSUMPTIVE ASSY		1
4 1	Q52G1701 7 XW	MESH PRINTTING_PAPER		0.050
4 2	055G 100610	Solder Paste		0.028
4 3	Q49G01WB1JL0HF000	Water-based Cleaning Agent - Decotron 23		0.100
4 4	Q05G6054 1	SHEET		0.003
3 12	057G 477900 T	RA SIG SM BC847C (KEC0) R	Q001	1
3 6	061G0402101 JT	RST CHIP 100R 1/16W 5% TZAI YUAN	R004	1
3 3	061G0402102 JT	RST CHIP 1K 1/16W 5% TZAI YUAN	R002	1
3 8	061G0402272 JT	RST CHIP 2K7 1/16W 5% TZAI YUAN	R003	1
3 7	065G040210232K Y	CAP 0402 1NF 10% 50V X7R CC0402KRX7R9BB	C002	1
3 11	065G040210412K Y	CAP 0402 100NF 10% 16V X7R	C003	1
3 4	065G060310512K T	CAP 0603 1UF 10% 16V X7R EMK107B7105KA	C001	1
3 9	093G 64 37 N	VPORT0603100KV05	ZD001	1
3 13	311GW125D05ACL	CONN 1.25mm 5P V/T B1254W05VUM2	CN001	1
3 1	356GS927052	IR RECEIVER TSOP75436WTT 36 KHZ	U001	1
3 10	381G0A1500R1GP	LED R GPSS008RC4	LED001	1
3 2	715G6726R01003004C	IR PCB FR4 DS 35x15x1.6mm	E715	1
3 14	715G6726R01003004K	IR PCB FR4 DS 35x15x1.6mm	E715	1
1 68	J40G000281357B	CEL LABEL G3		1
1 5	J40G032081310A	RATING LABEL 32PHF5311/T3		1
1 41	J41G32SV81310A	QSG 32PHF5311/T3		1
1 13	J44GJ9071010KM	CUSHION-T NA China(2002)		1
1 14	J44GJ9072010KM	CUSHION-B NA China(2002)		1
1 63	J44GJ90781302B00JA	ARTWORK CARTON 32PHF 5361/5301/5311/5351		1
1 56	LVB315WHBN0AKT2F0	TPT315B5-WHBN0.K S8D62B BJ TPV	E750	1
1 44	P34E2652XLN01L0100	BASE_RIGHT TV315W-14c-ph15-16ph09		1
1 17	P34E2653XLN01L0100	BASE_LEFT TV315W-14c-ph15-16ph09		1
1 32	P40GD000813 9A	A4 PALLET LABEL -for A4 paper		0.050
1 2	Q11G701016000L00PJ	PCB-SUPPORT D3.5xH16		1
1 16	Q12G71400610HF0AJF	HEAT PAD		1
1 46	Q36T 600 49 7	NON-WOVEN FABRIC		2
1 37	Q40G0001624 4A	产线需求的栈板LABEL		0.050
1 50	Q45G88010TV05600SJ	PROTECT BAG		1
1 18	Q45G99010TV03900SZ	PROTECT BAG		1
1 30	Q49G 51500 HF	panel清洁剂		1.842
1 12	Q52G130118600000YY	TAPE		20
1 29	Q52G1501150523 W	NSULATING PLATE		56
1 54	Q52G160119100A00YY	TAPE		24
1 4	X15T264610100000JH	BKT_IO_BTM		1

1	11	X15T8967701000GMNP	BKT_IO_SIDE			1
1	6	X33E0196001Z1C0100	DECO_BEZEL			1
1	22	X34V0299XJY02D0100	REAR_COVER	NA		1
1	23	X40G0001624	2A	Label for screw	pe bag	1
1	1	X40G000181310C	CARTON LABEL			1
1	49	X40G000881328A	OTHER LABEL	开机必读标签		1
1	33	X41G78DV81311E	WARRANTY CARD	TPV address china		1
1	52	X52G150100300000BK	TAPE_INSULATING		R05201	12
1	27	X52G150100300000YY	TAPE_INSULATING		R05201	12
1	9	X52G180137700000BK	INSULATING SHEET			1
1	60	X52G180144100000BK	INSULATING SHEET			1
1	66	X52G20012470000ABK	TAPE			95

1. 正视图



2. 后视图



3. 内部结构图



HI3751AV500 DEMO VER.A

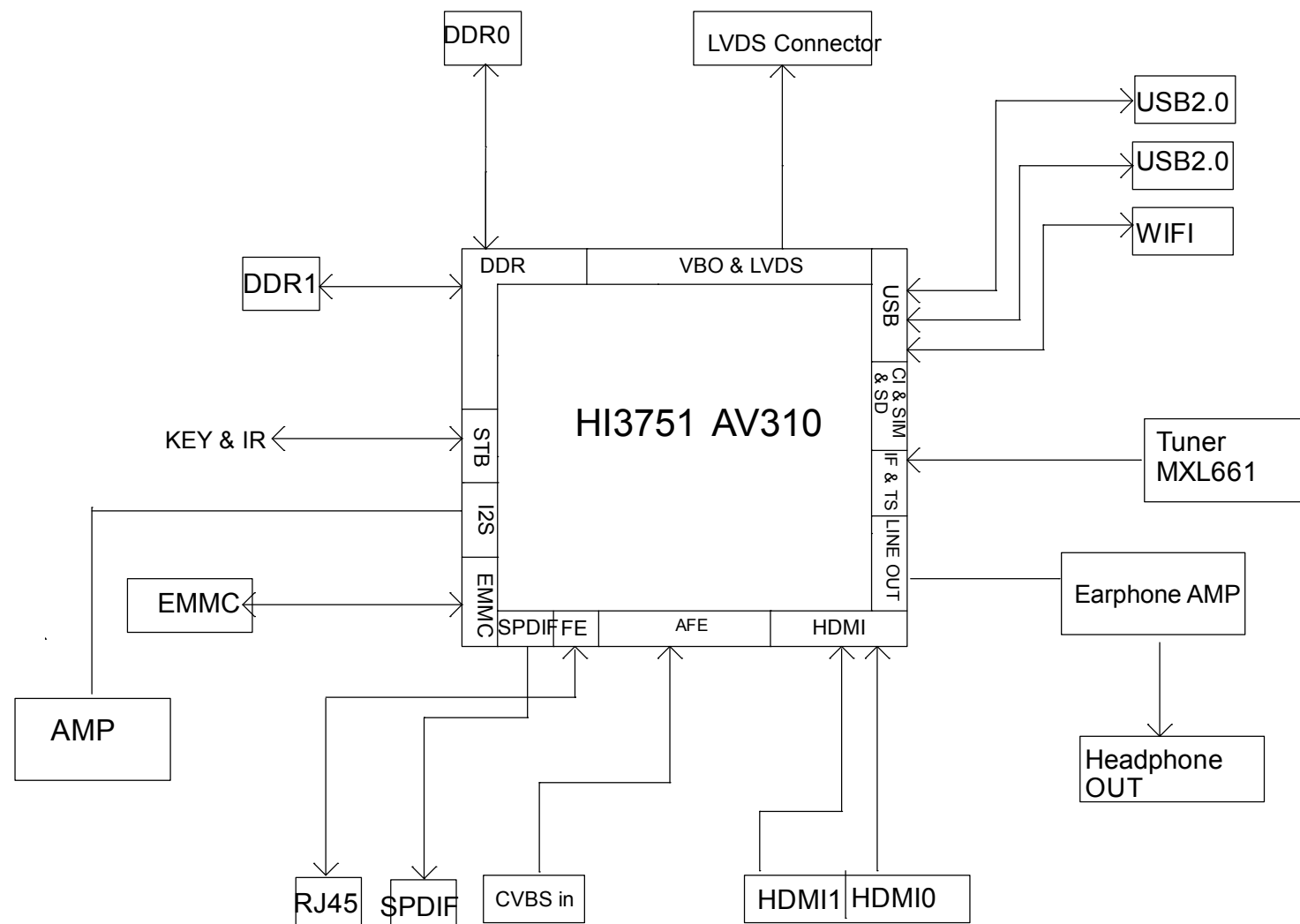
Update 2014.02.07

Hi3751AV500 Schematic Circuit Version and Page Information

Page	Comment	Page	Comment
1	Information indicator	12	V-BY-ONE
2	Block diagram	13	USB2.0 & USB3.0 & WIFI
3	Power tree & Boot strap	14	CI & CA
4	Power and Signal switching control	15	Tuner socket
5	Power supply management	16	MIC YPBPR & AV IN & CVBS OUT
6	UART & JTAG socket & IR & KEY	17	Audio Output
7	Chip Power	18	AMP
8	DDRIII_Chip Power	19	HDMI0 & MHL
9	DDRIII_0	20	HDMI1(ARC) & HDMI2
10	DDRIII_1	21	Ethernet & SD
11	eMMC & eeprom & xtal	22	Power switching control

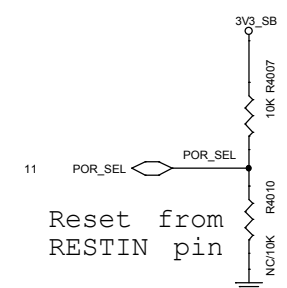
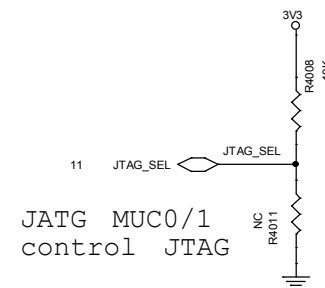
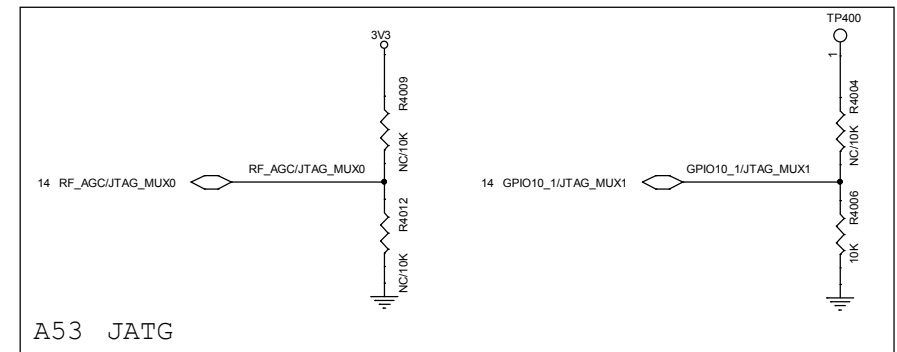
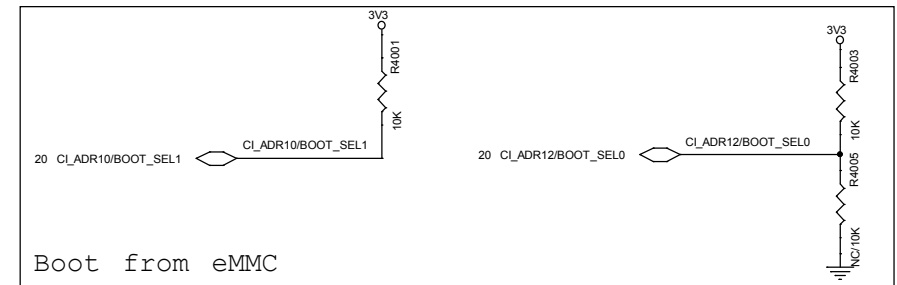
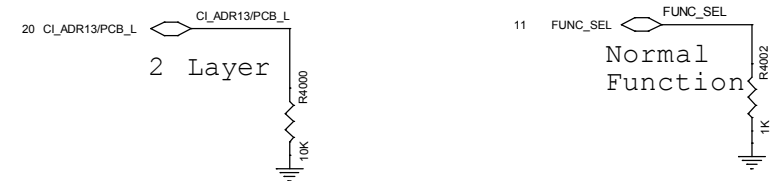
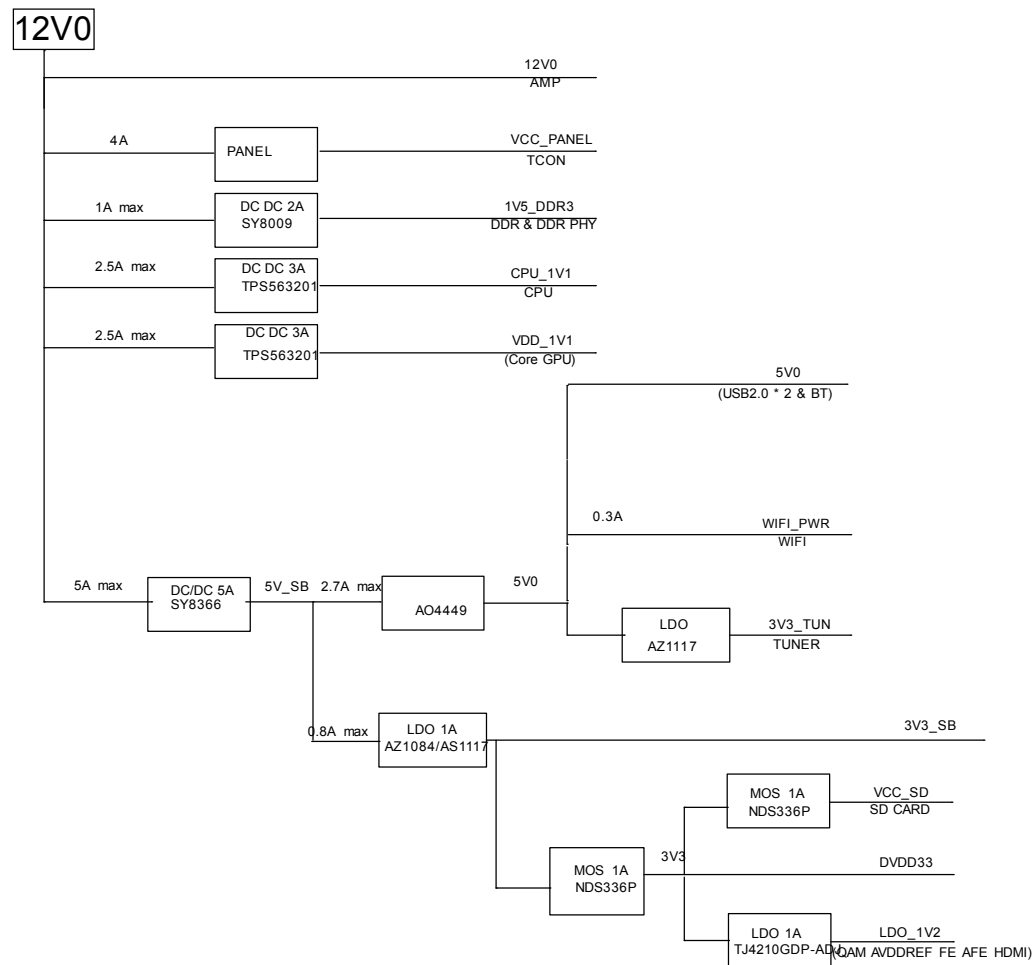


TPV (Top Victory Electronics Co., Ltd.)		OEM MODEL		Size	A3
新隔瓜銅板V310		TPV MODEL		Rev	
Key Component		PCB NAME		称 號	
Date	Friday, July 01, 2016	Sheet	1 of 21		



TPV (Top Victory Electronics Co., Ltd.)	OEM MODEL		Size	A3
结隔瓜组 810	TPV MODEL		Rev	
Key Component	PCB NAME		称	
Date	Friday, July 01, 2016	Sheet	2 of 21	

Power tree & Boot strap



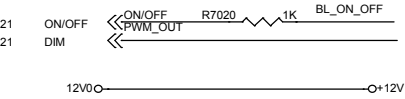
Boot Strap Selection

PCB LAYER	PCB_L	DS	0:2 LAYERS 1:4 LAYERS	0
FUNCTION MODE	FUNC_SEL	DS	0:NORMAL FUNCTION 1:TEST	0
BOOT DEVICE SEL	BOOT_SEL0	DS	0X:SPI FLASH	11
	BOOT_SEL1	US	10:FSD 11:eMMC	
JTAG CHANNEL SEL	JTAG_MUX1	S	00:A53_JTAG	00
	JTAG_MUX0	S	01:DSP_JTAG 10:DDRC_JTAG 11:A53_JTAG	
JTAG CONTROL SEL	JTAG_SEL	DS	0:registers control JTAG 1:JTAG_MUX0/1 control JTAG	1
POWER ON RESET SEL	POR_SEL	US	0:reset from RESTIN pin 1:reset from internal POR signal	1

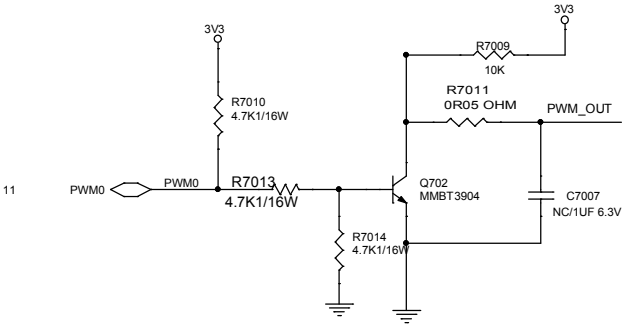


T P V (Top Victory Electronics Co., Ltd.)		OEM MODEL		Size	A3
結隔瓜網數V310		TPV MODEL		Rev	
Key Component		PCB NAME			
Date	Friday, July 01, 2016	Sheet	3 of 23	称	密

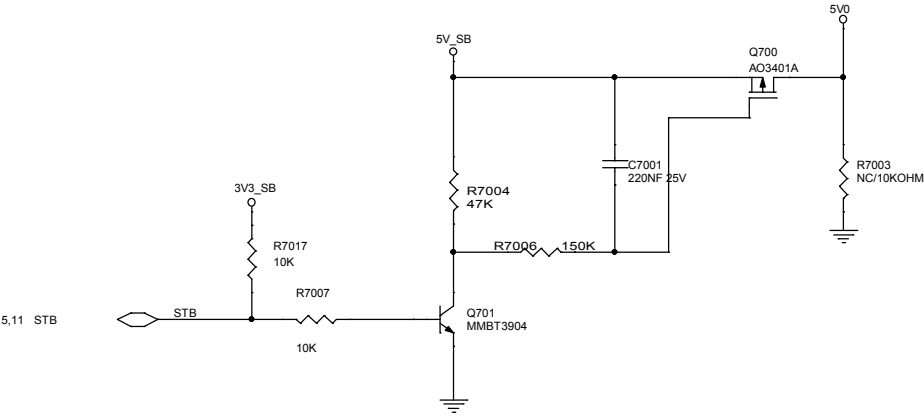
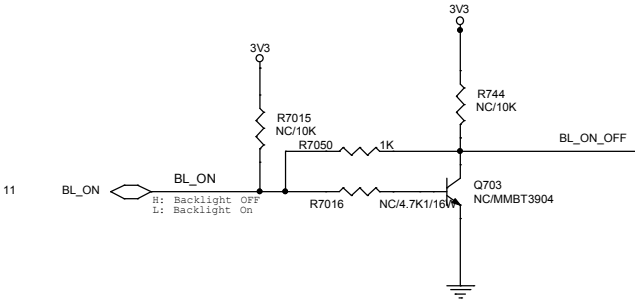
Connetor



Panel bright control



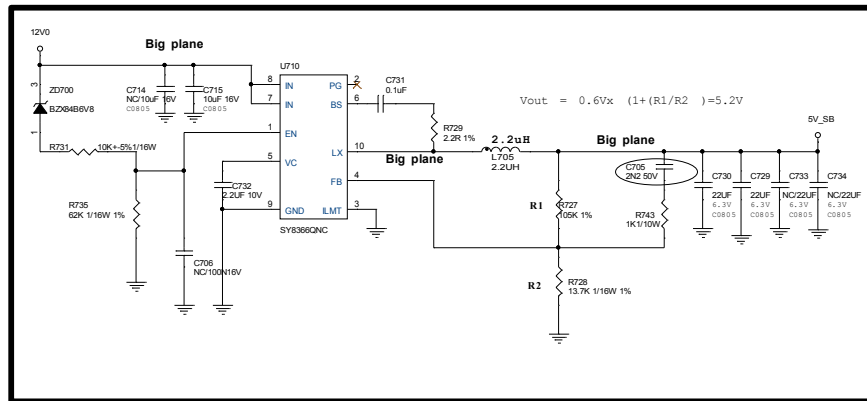
Power on off switch



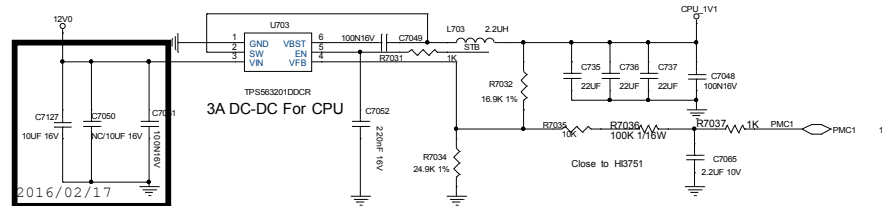
T P V (Top Victory Electronics Co . , Ltd.)		OEM MODEL		Size	A3
新 隔 瓜 銅 製		TPV MODEL		Rev	
Key Component		PCB NAME		称 號	
Date	Friday, July 01, 2016	Sheet	4 of 23		

Power supply management

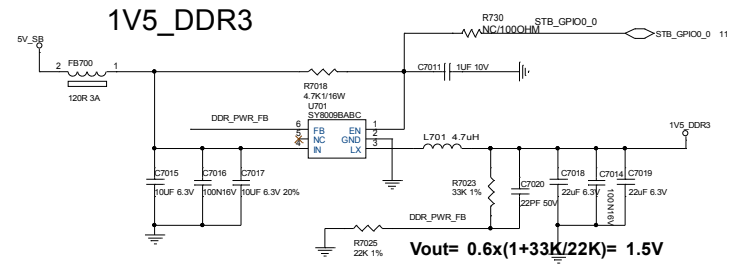
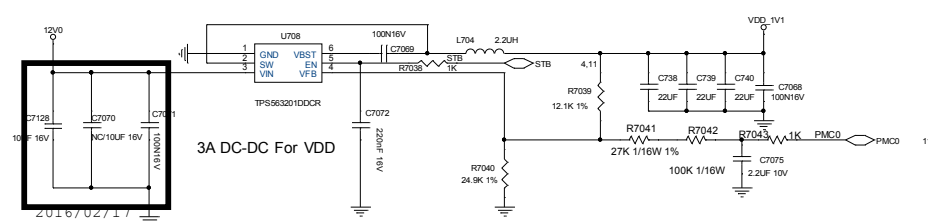
SY8368QNC: Max:8A
Vin 4V~25V



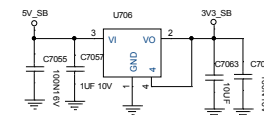
CPU_1V1



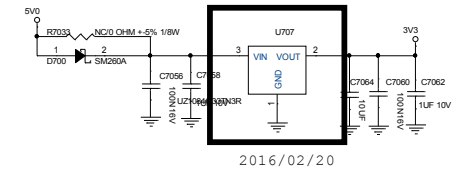
VDD_1V1



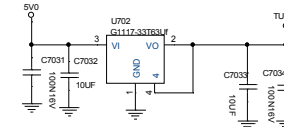
3V3_SB



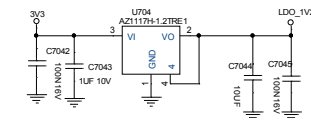
3V3



TU3V3

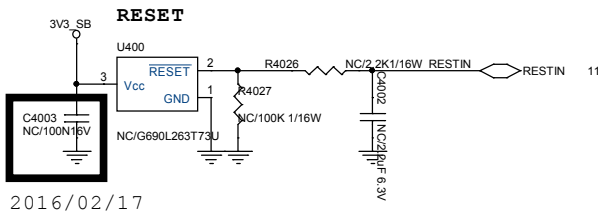
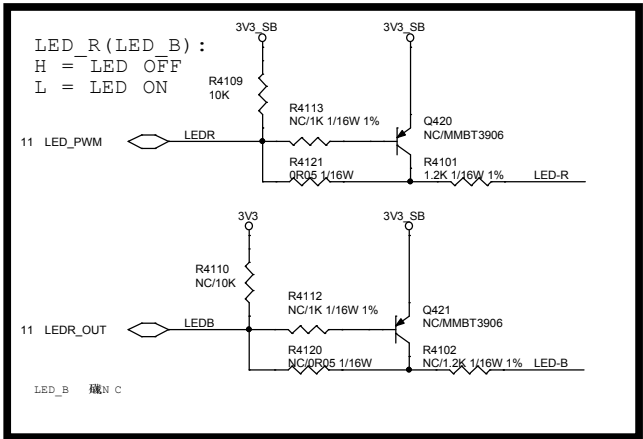
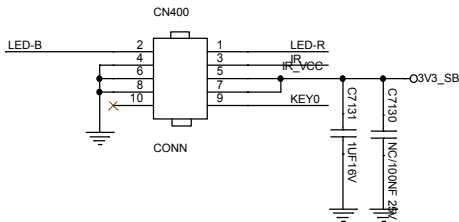


LDO_1V2

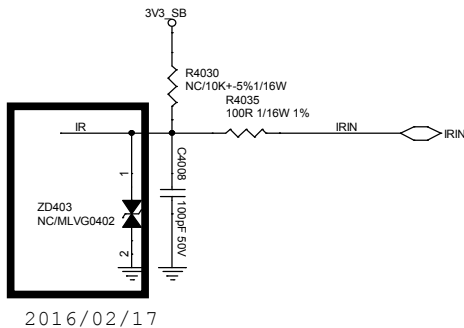
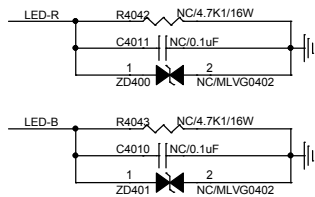


T P V (Top Victory Electronics Co., Ltd.)		OEM MODEL		Size	A2
結構 爪 鋼 線		TPV MODEL		Rev	
Key Component		PCB NAME			
Date		Friday, July 01, 2016	Sheet	5 of 23	修 改

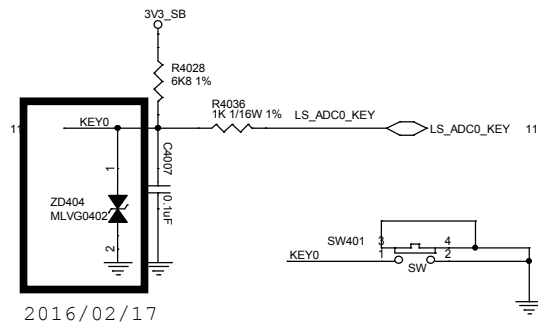
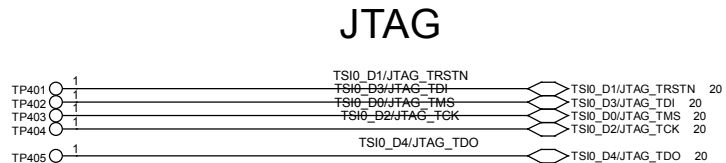
JTAG socket & IR & KEY



2016/02/17



2016/02/17

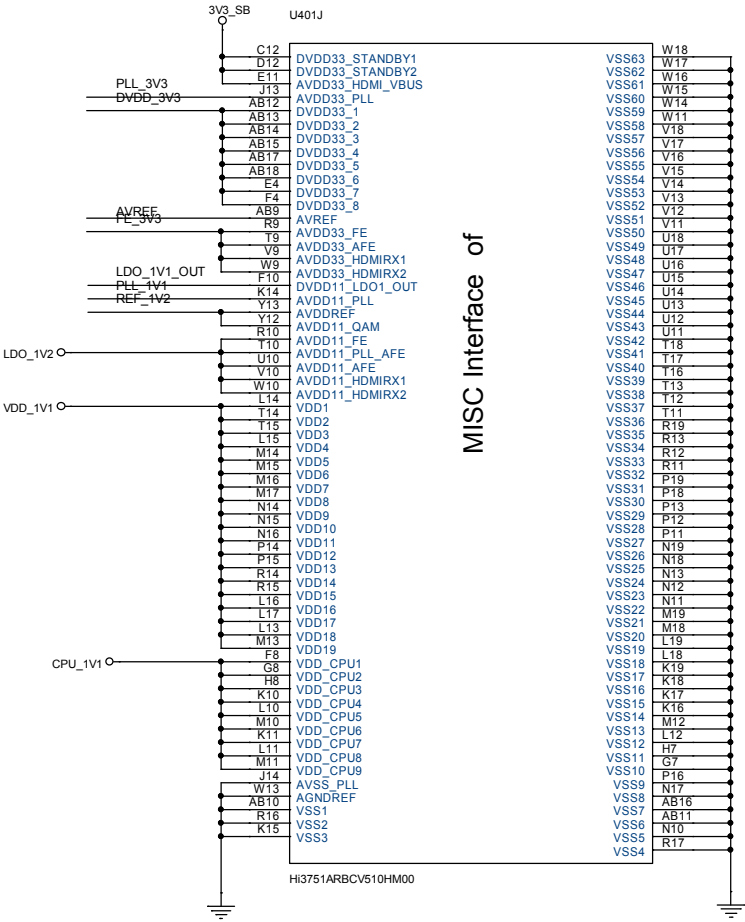
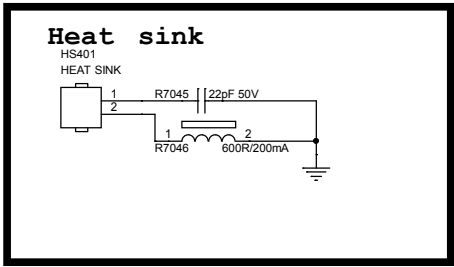
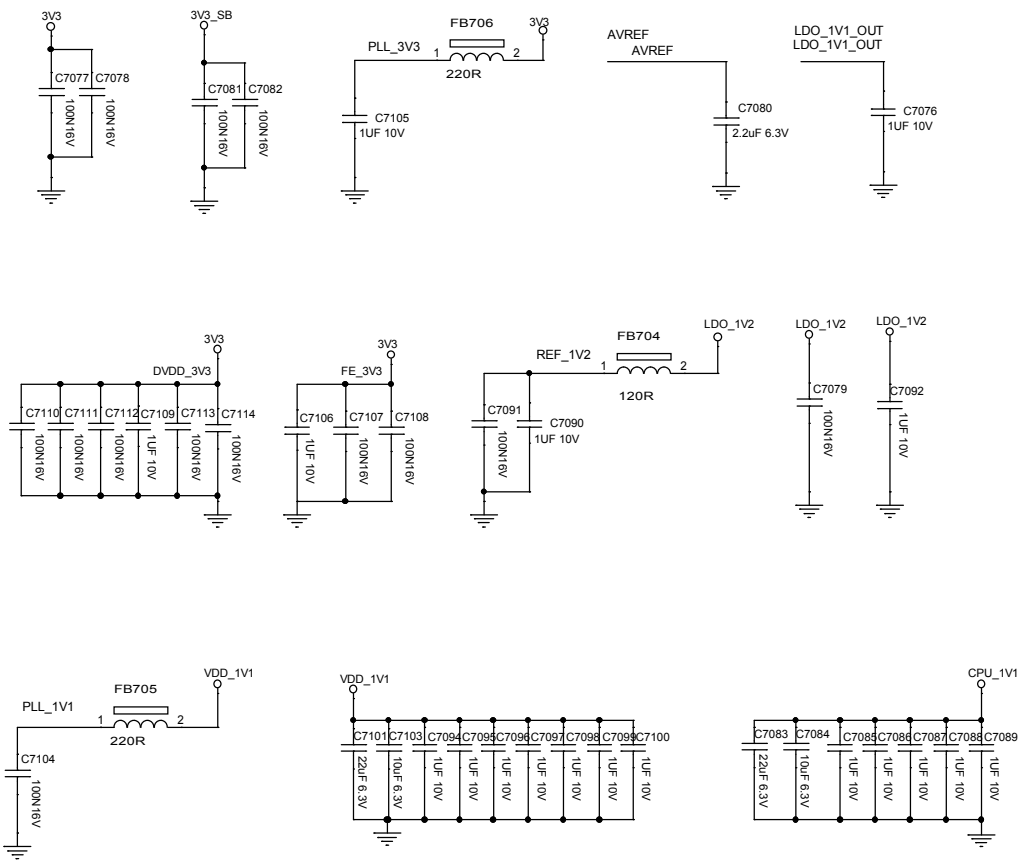


2016/02/17



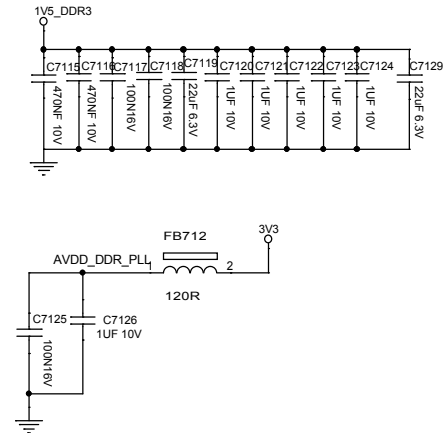
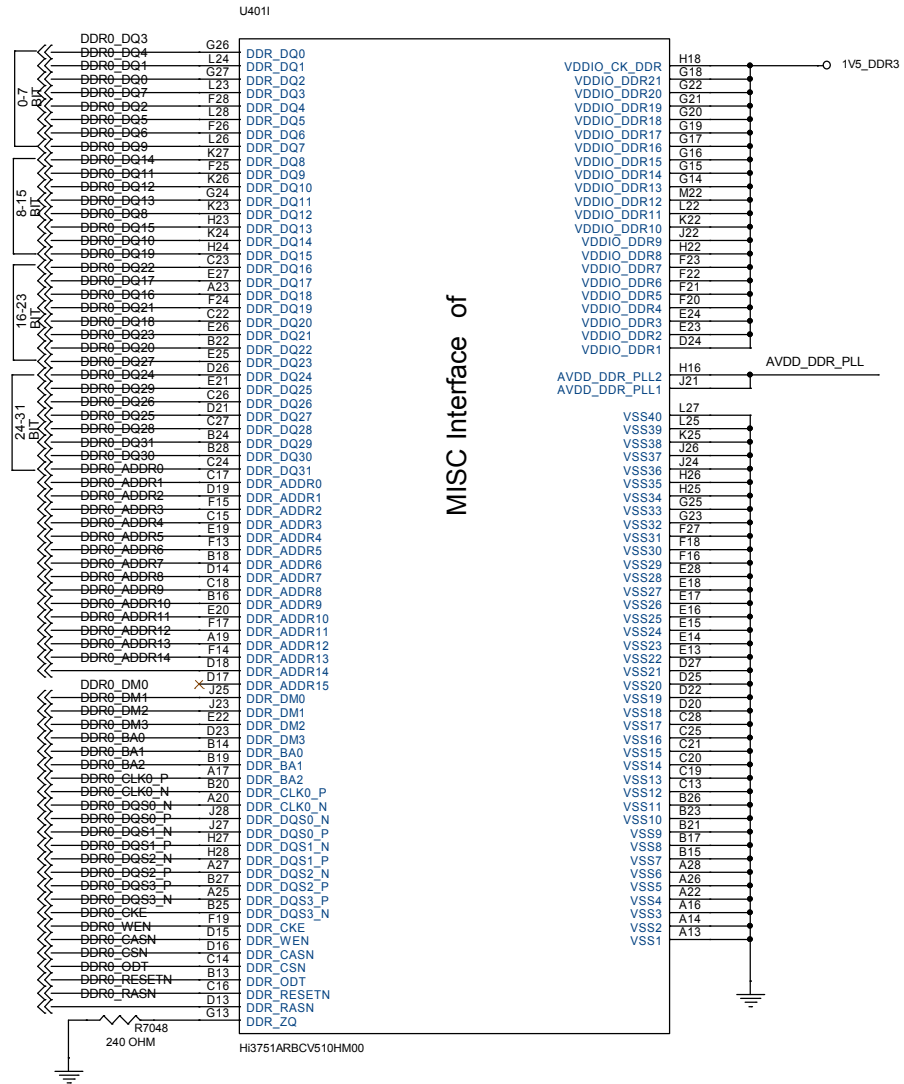
TPV (Top Victory Electronics Co . , Ltd.)		OEM MODEL		Size	A3
新隔瓜銅製		TPV MODEL		Rev	
Key Component		PCB NAME		称	
Date	Friday, July 01, 2016	Sheet	6 of 23		

Chip Power



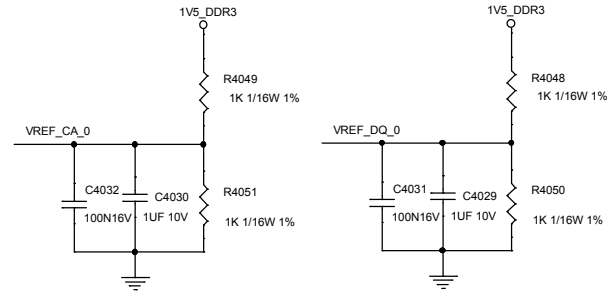
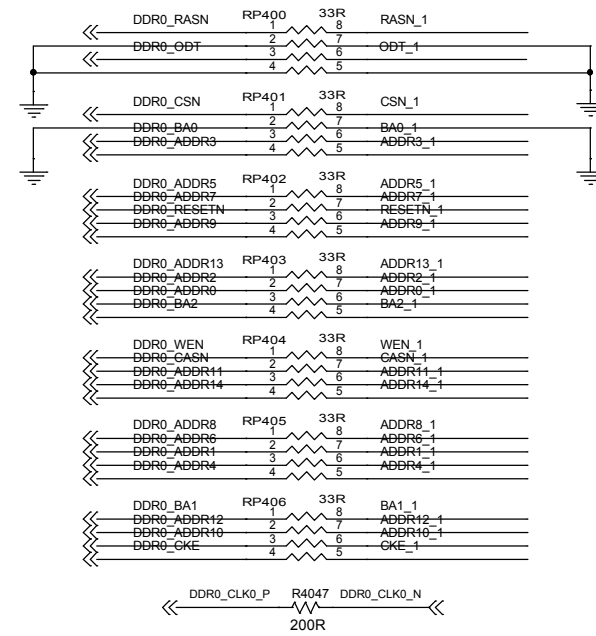
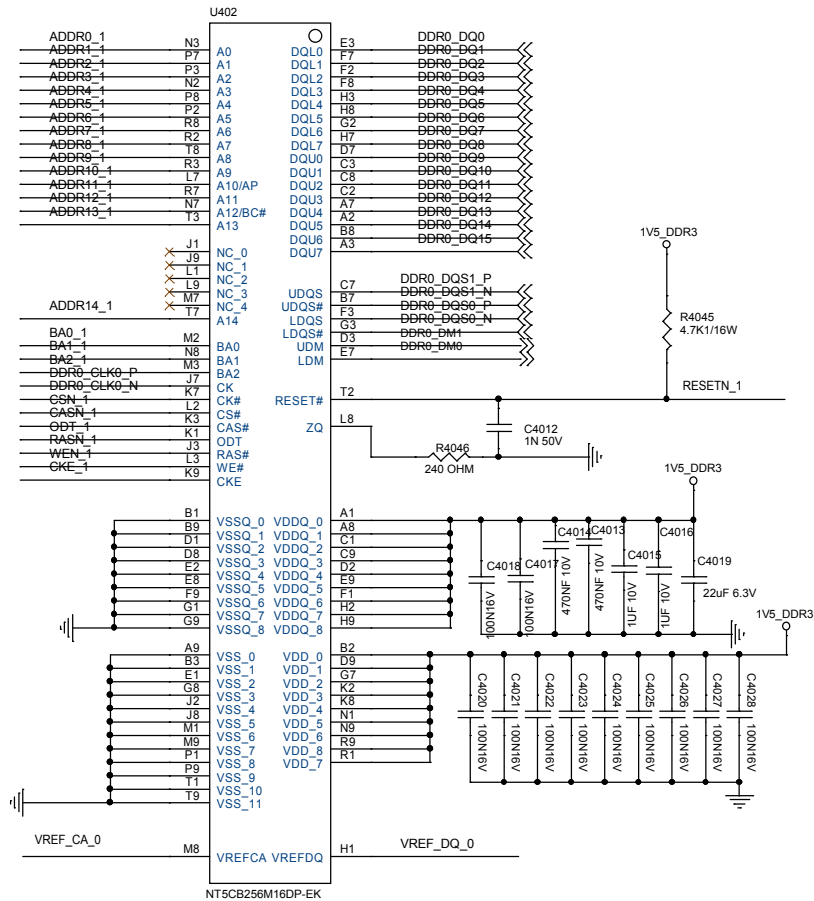
TPV (Top Victory Electronics Co., Ltd.)				OEM MODEL		Size	A3
新隔瓜銅製				TPV MODEL		Rev	
Key Component				PCB NAME		称	
Date	Friday, July 01, 2016			Sheet	7 of 23		

DDRIII_Chip Power



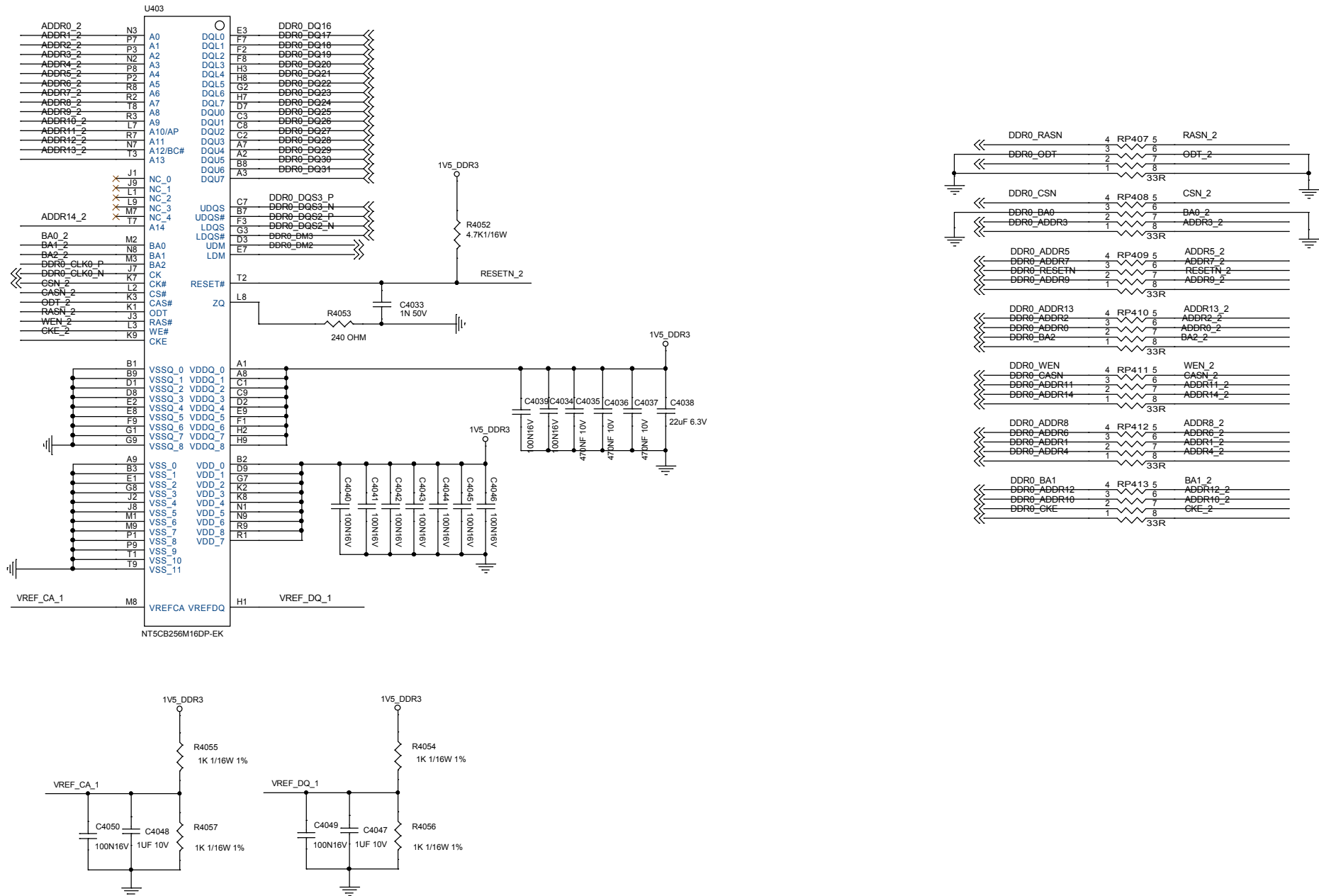
T P V (Top Victory Electronics Co., Ltd.)			OEM MODEL		Size	A3
鋅隔瓜銅板			TPV MODEL		Rev	
Key Component			PCB NAME		称 密	
Date	Friday, July 01, 2016		Sheet	8 of 23		

DDRIII_1



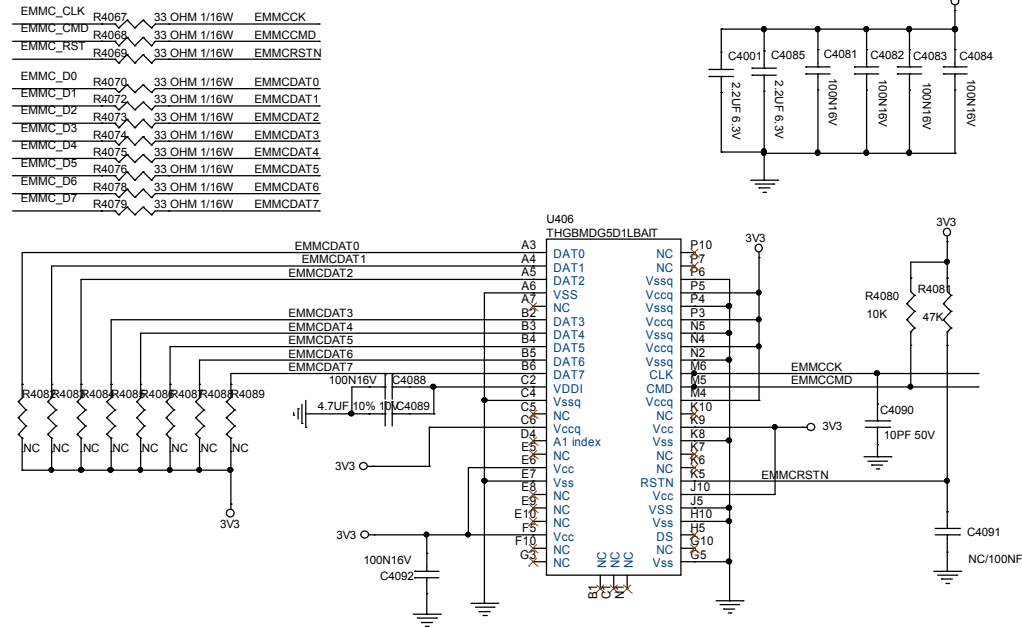
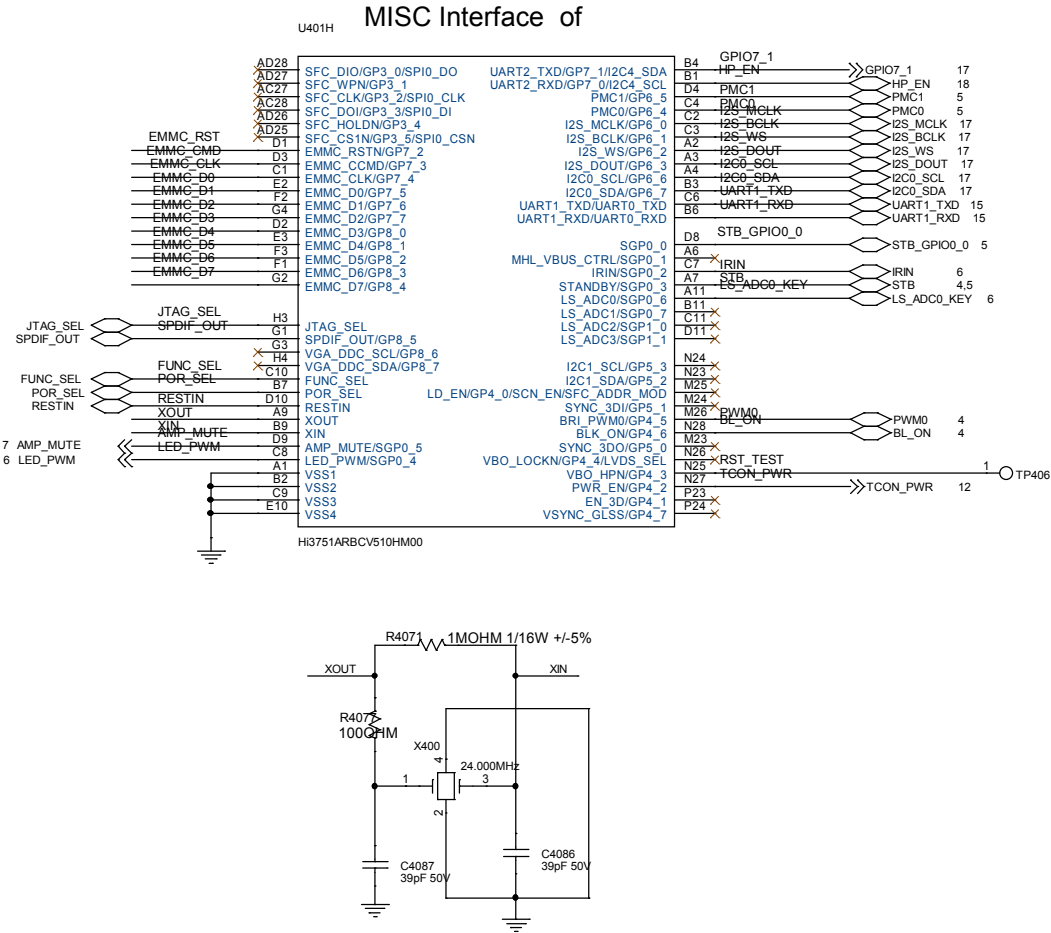
TPV (Top Victory Electronics Co., Ltd.)		OEM MODEL		Size	A3
新隔瓜銅製		TPV MODEL		Rev	
Key Component		PCB NAME		称	號
Date	Friday, July 01, 2016	Sheet	9 of 23		

DDR3_2



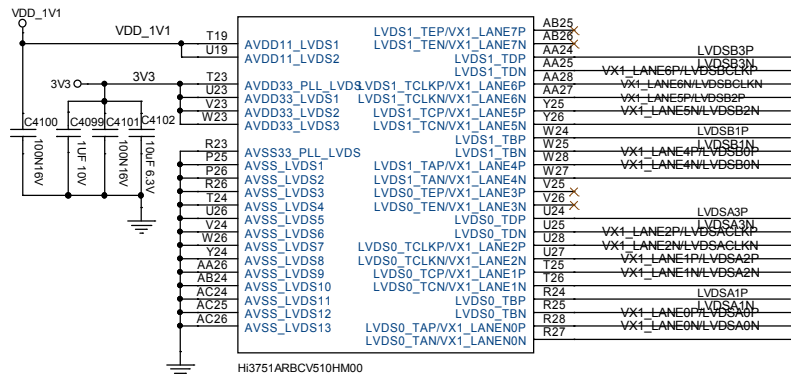
TPV (Top Victory Electronics Co., Ltd.)		OEM MODEL		Size	A3
話隔瓜銅製		TPV MODEL		Rev	
Key Component		PCB NAME		称	號
Date	Friday, July 01, 2016	Sheet	10 of 23		

eMMC & eeprom & xtal

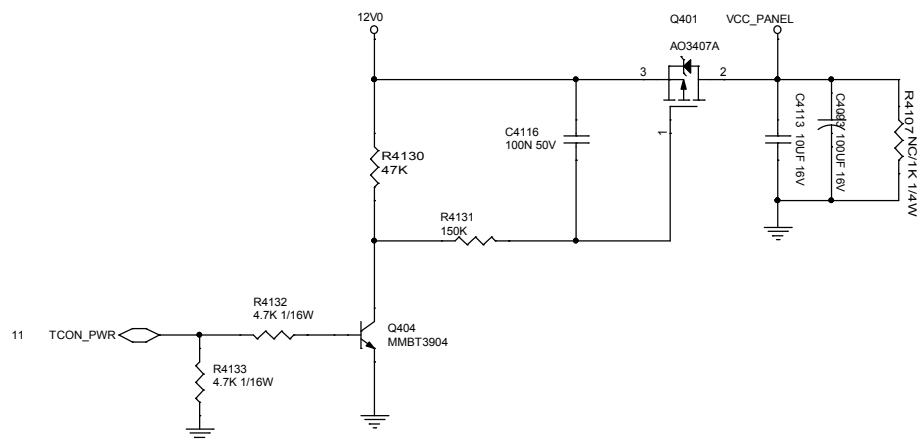
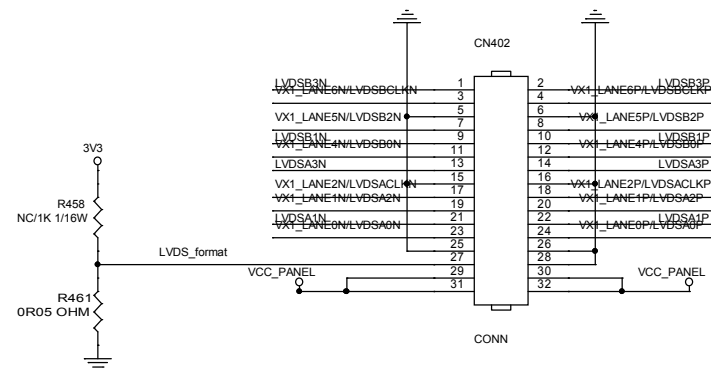


V-BY-ONE socket

MISC Interface of U401G



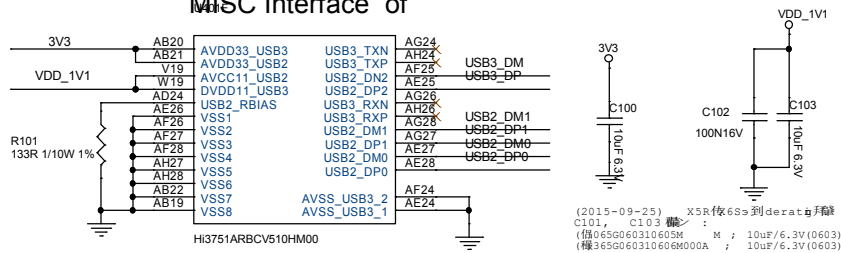
FOR FULL HD PANEL



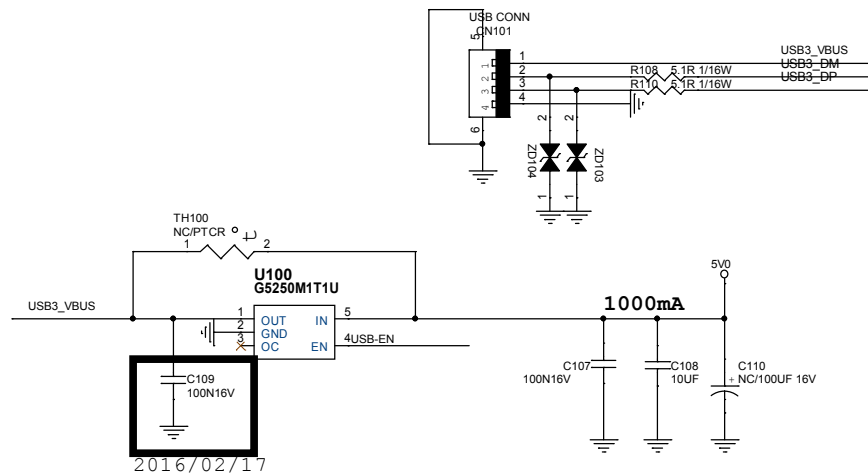
T P V (Top Victory Electronics Co . , Ltd .)		OEM MODEL		Size	A3
紙隔瓜網複		TPV MODEL		Rev	
Key Component		PCB NAME		称 號	
Date	Friday, July 01, 2016	Sheet	12 of 23		

USB2.0 & USB3.0 & WIFI

MISC Interface of

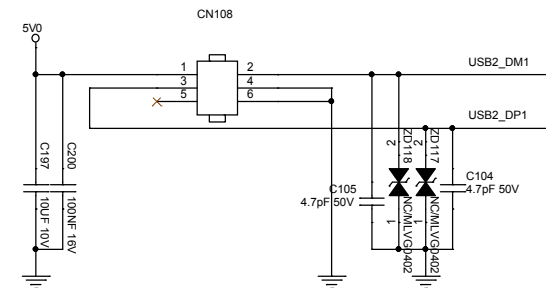


USB2.0 Port

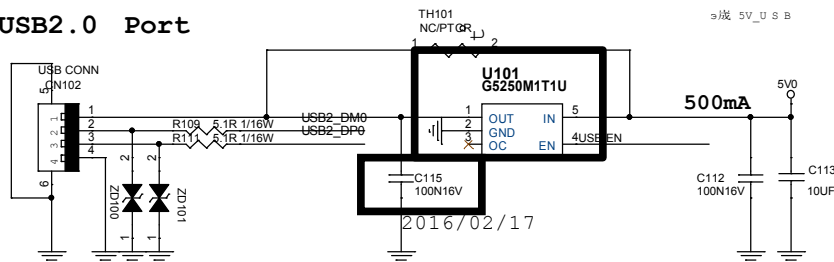


USB-EN R191 100OHM1/16W USB-EN1 USB-EN1 20

WIFI & BT (Internal)



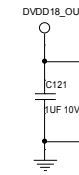
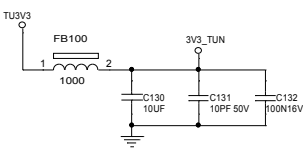
USB2.0 Port



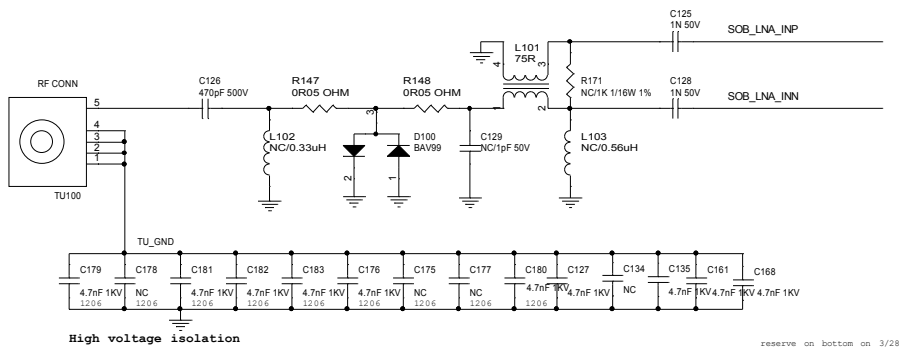
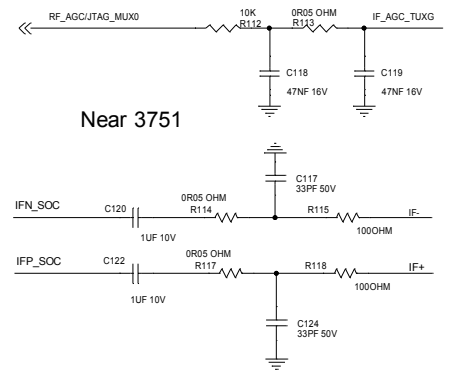
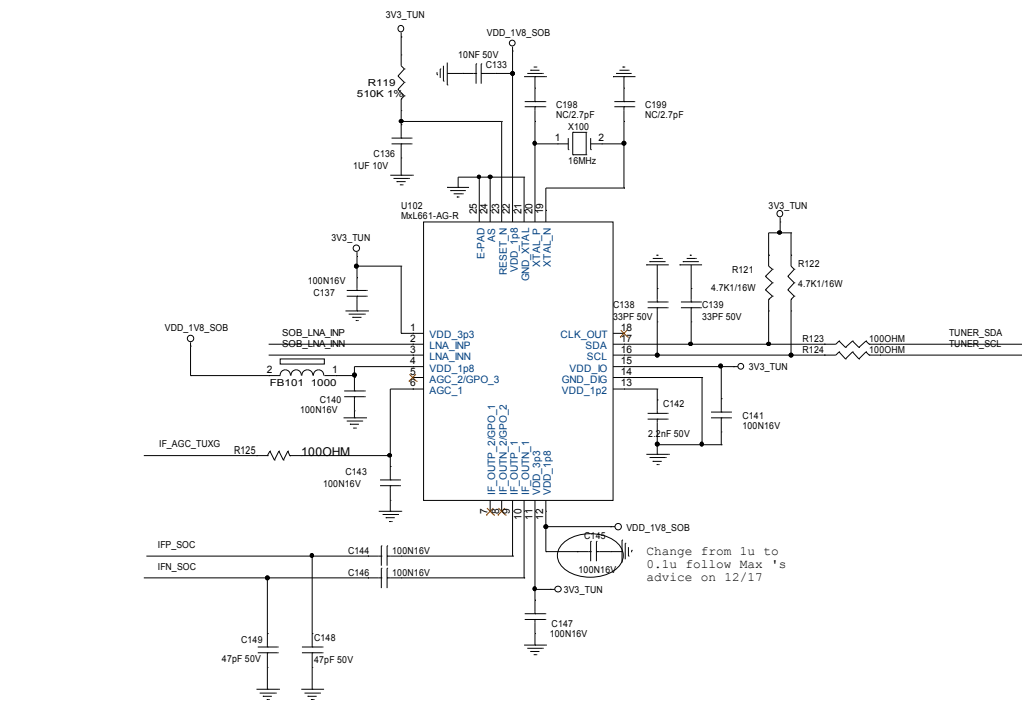
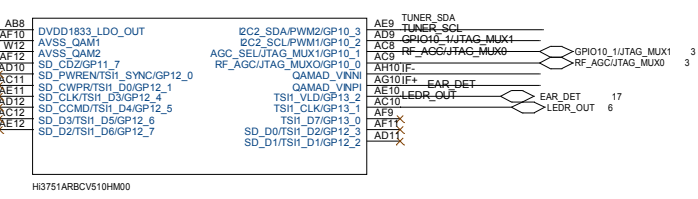
U101/G5250K1T1U(1.5A) 500mA G5250M1T1U (A)
for cost down(2016/01/25)



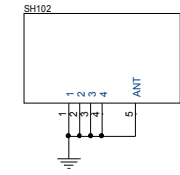
TPV (Top Victory Electronics Co., Ltd.)		OEM MODEL		Size	A3
新隔瓜銅線		TPV MODEL		Rev	
Key Component		PCB NAME		称	番
Date	Friday, July 01, 2016	Sheet	13 of 23		



Tuner MISC Interface of



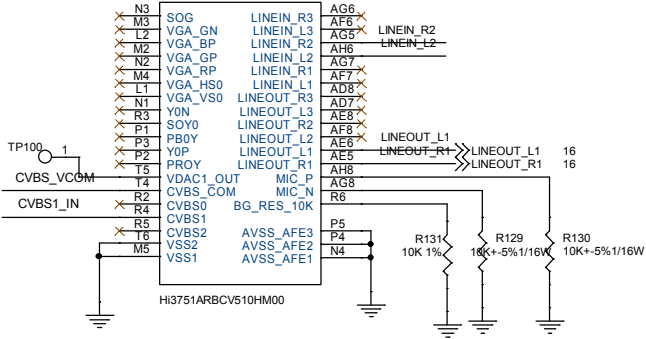
Shield Cover



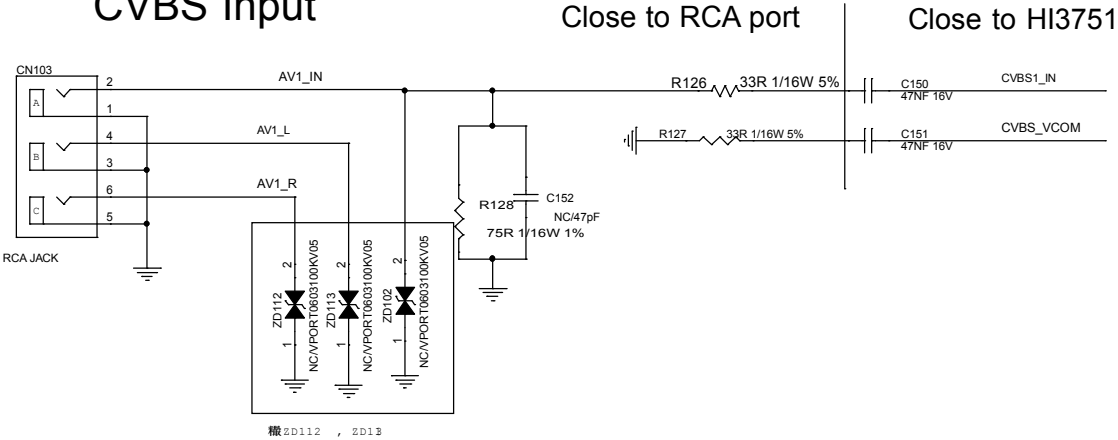
TPV (Top Victory Electronics Co., Ltd.)		OEM MODEL		Size	Custom
經隔瓜廟製		TPV MODEL		Rev	
KeyComponent		PCB NAME		稱	
Date Friday, July 01, 2016		Sheet 14 of 23			

MIC & YPBPR & AV IN & CVBS OUT

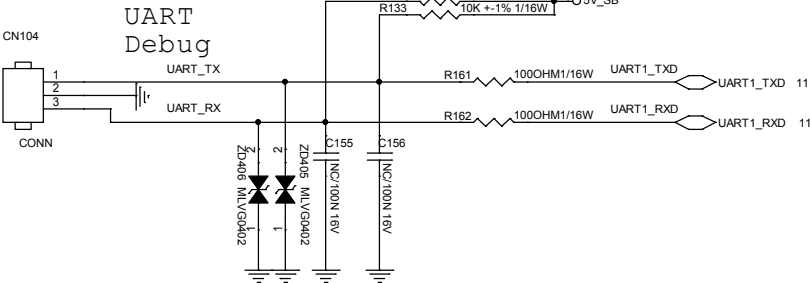
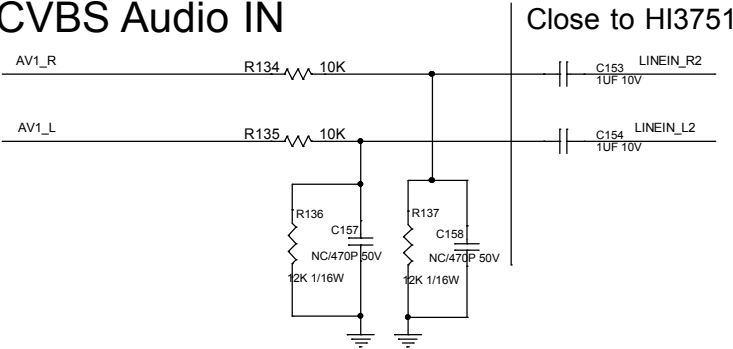
MISC Interface of
U401C



CVBS Input



CVBS Audio IN

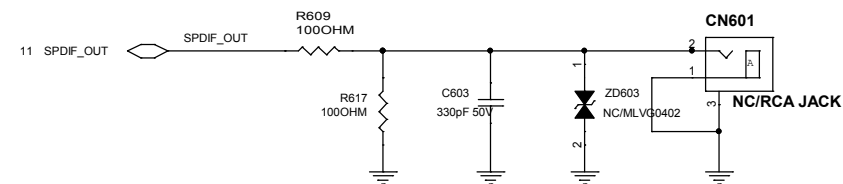
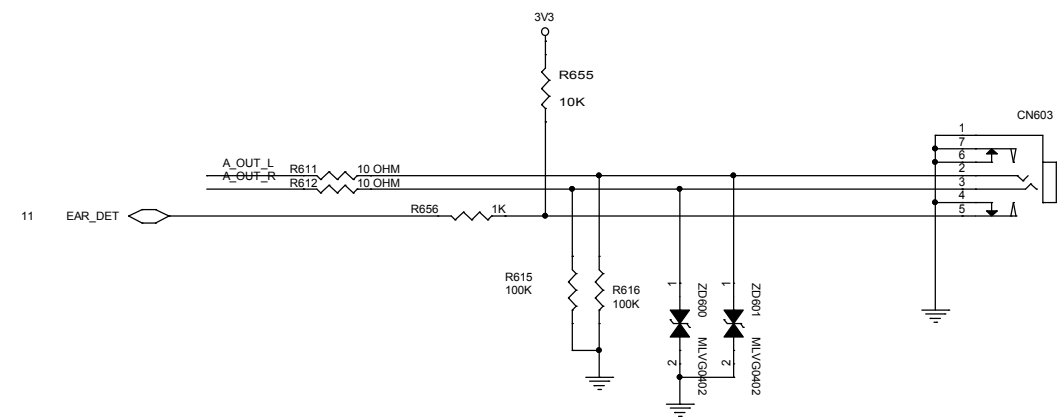
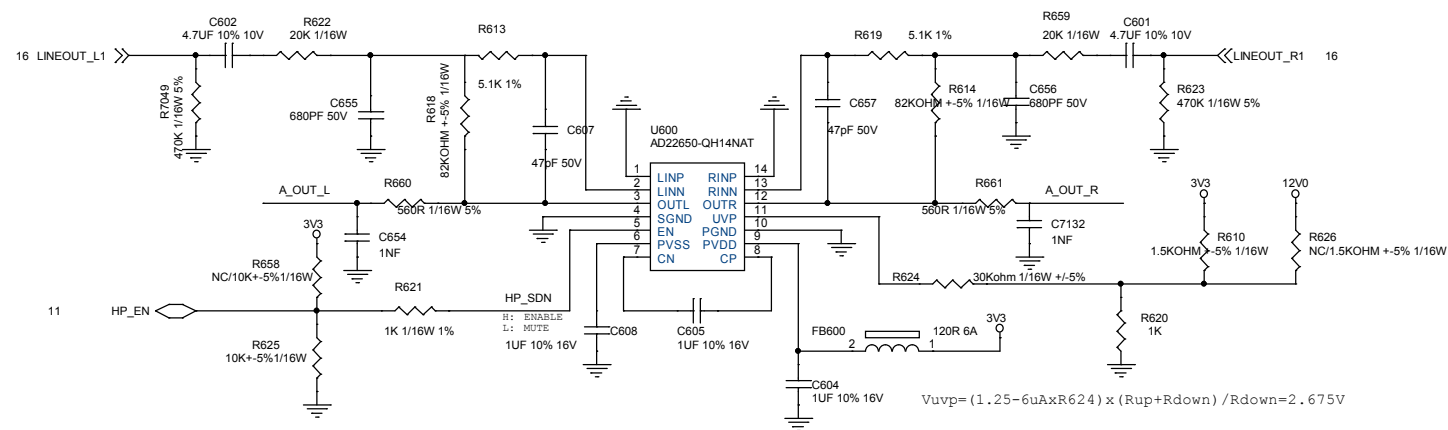


埃CN108(UAR T debu g connector)
(2016/01/27)



T P V (Top Victory Electronics Co . , Ltd .)		OEM MODEL		Size	A3
話隔瓜銅製		TPV MODEL		Rev	
Key Component		PCB NAME		称	修
Date	Friday, July 01, 2016	Sheet	15 of 23		

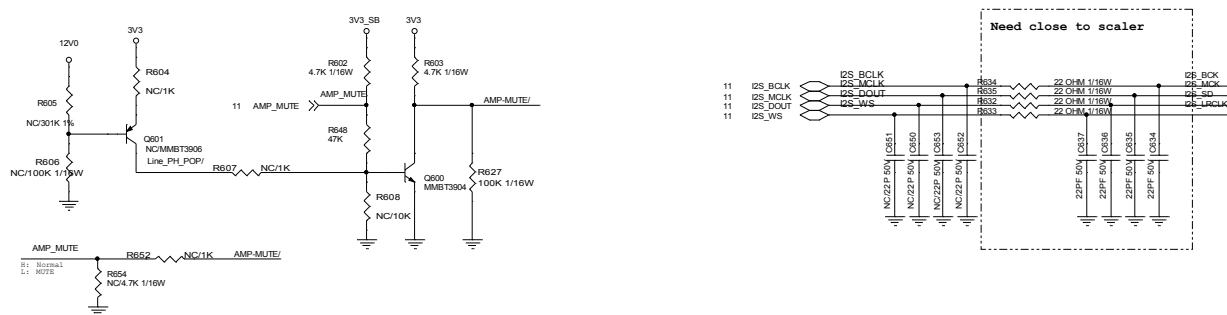
Audio Output



2016/02/22



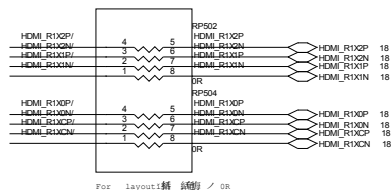
T P V (Top Victory Electronics Co . , Ltd .)				OEM MODEL		Size	A3
話 隔 瓜 銅 製				TPV MODEL		Rev	
Key Component				PCB NAME		称 号	
Date	Friday, July 01, 2016			Sheet	16 of 23		



U401B

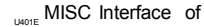


HDMI1 (ARC)



The diagram illustrates a 18-to-18 bit multiplier architecture. It consists of two 9-bit multipliers, RP503 and RP505, which are connected to the inputs. The inputs are HDM1_R20X0P and HDM1_R20X0N, and HDM1_R20X1P and HDM1_R20X1N. The outputs of the multipliers are HDM1_R20X2P, HDM1_R20X2N, HDM1_R20X3P, and HDM1_R20X3N. The final output is HDM1_R20X4P and HDM1_R20X4N. The multiplier is implemented using a 9-bit ripple-carry multiplier structure.

MISC Interface of



CONTENTS

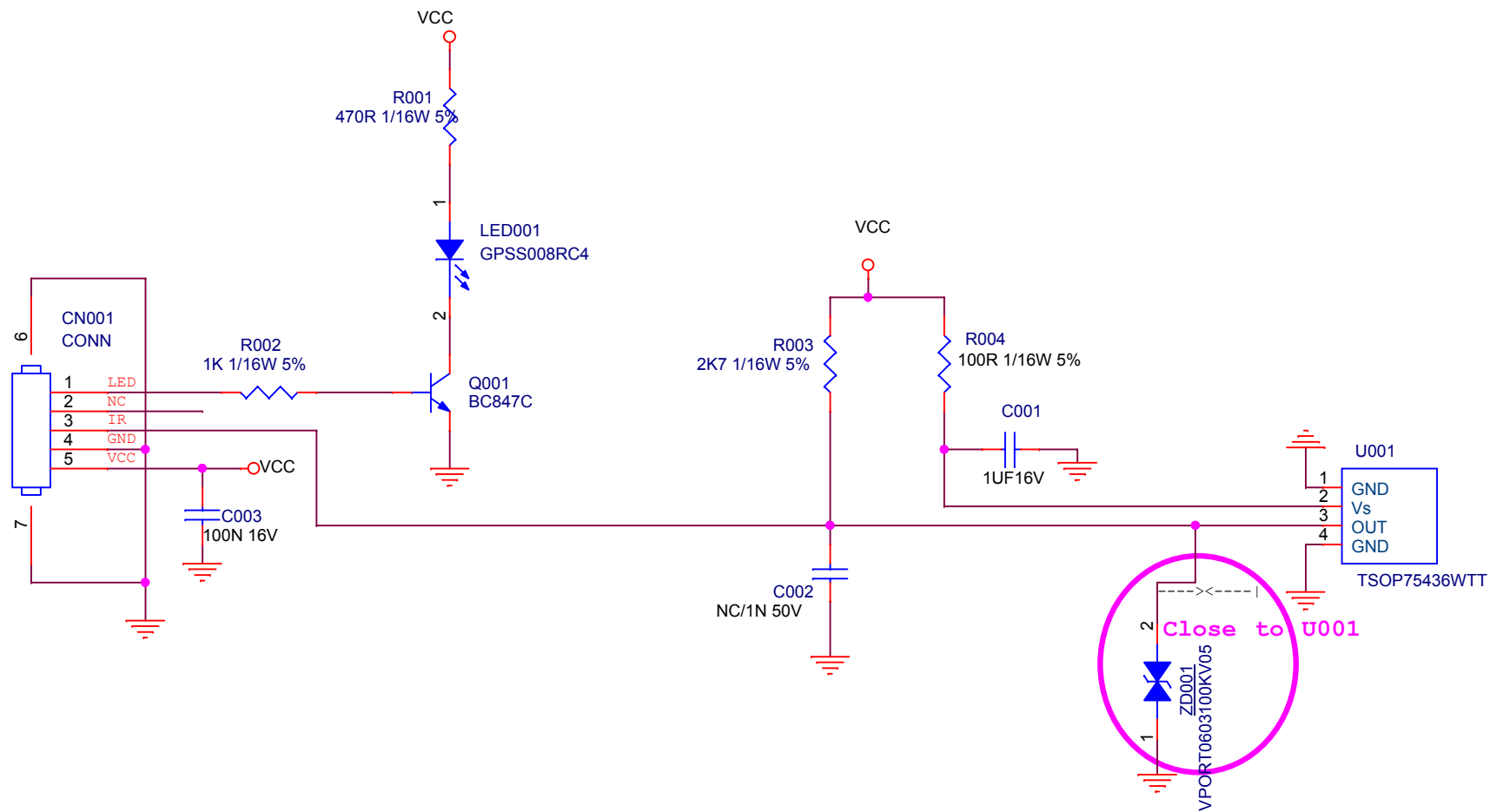
REVISION HISTORY

01.	Cover
02.	IR_board

Date	Author	Ver	Reviser reason	FN
12/19 2012	Harrison	A		
04/16 2013	Jamie Tsai		This IR_LED board modification is for LD58U3000 lighting logo design.	



T P V (Top Victory Electronics Co., Ltd.)			OEM MODEL	X	Size	Custom
結 隔 瓜 網 膜			TPV MODEL		Rev	A
Key Component	01-Cover		PCB NAME		称 差	<称差>
Date			Sheet	1 of 2		



T P V (Top Victory Electronics Co . , Ltd.)	OEM MODEL		Size	A
結 隔 瓜 網 腹	TPV MODEL		Rev	A
Key Component	IR BOARD	PCB NAME	称 爹	<称爹>
Date		Sheet	2 of 2	