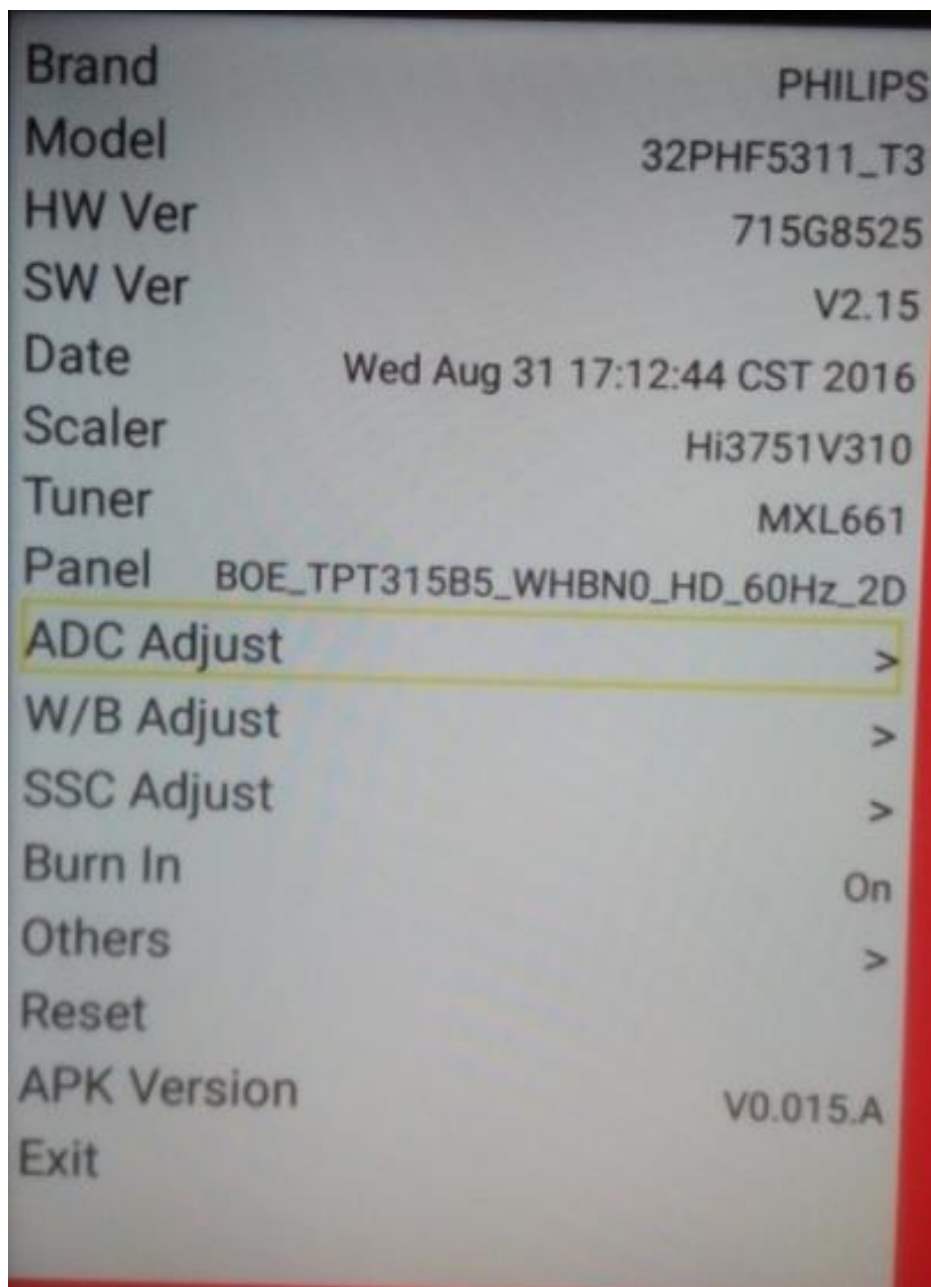


工厂模式调整：菜单+1999+返回



项目名称	功能说明	备注
Brand	机种品牌	不可调整
Model	机器型号	不可调整
HW Ver	硬体板号	不可调整
SW Ver	软体版本	不可调整
Date	软体发布日期	不可调整
Scaler	主芯片型号	不可调整
Tuner	高频头型号	不可调整
Panel	液晶屏型号	不可调整
ADC Adjust	ADC 调整	免调
W/B Adjust	白平衡调整	不建议调整
SSC Adjust	展频调整	不建议调整
Burn In	拷机模式	On/Off
Reset	复位	
Exit	退出工厂模式	

1. 正视图



2. 后视图

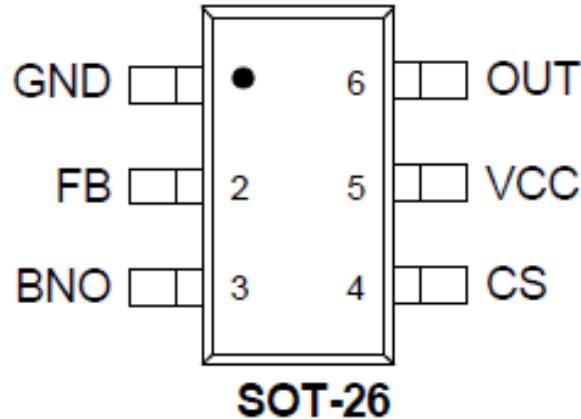


3. 内部结构图



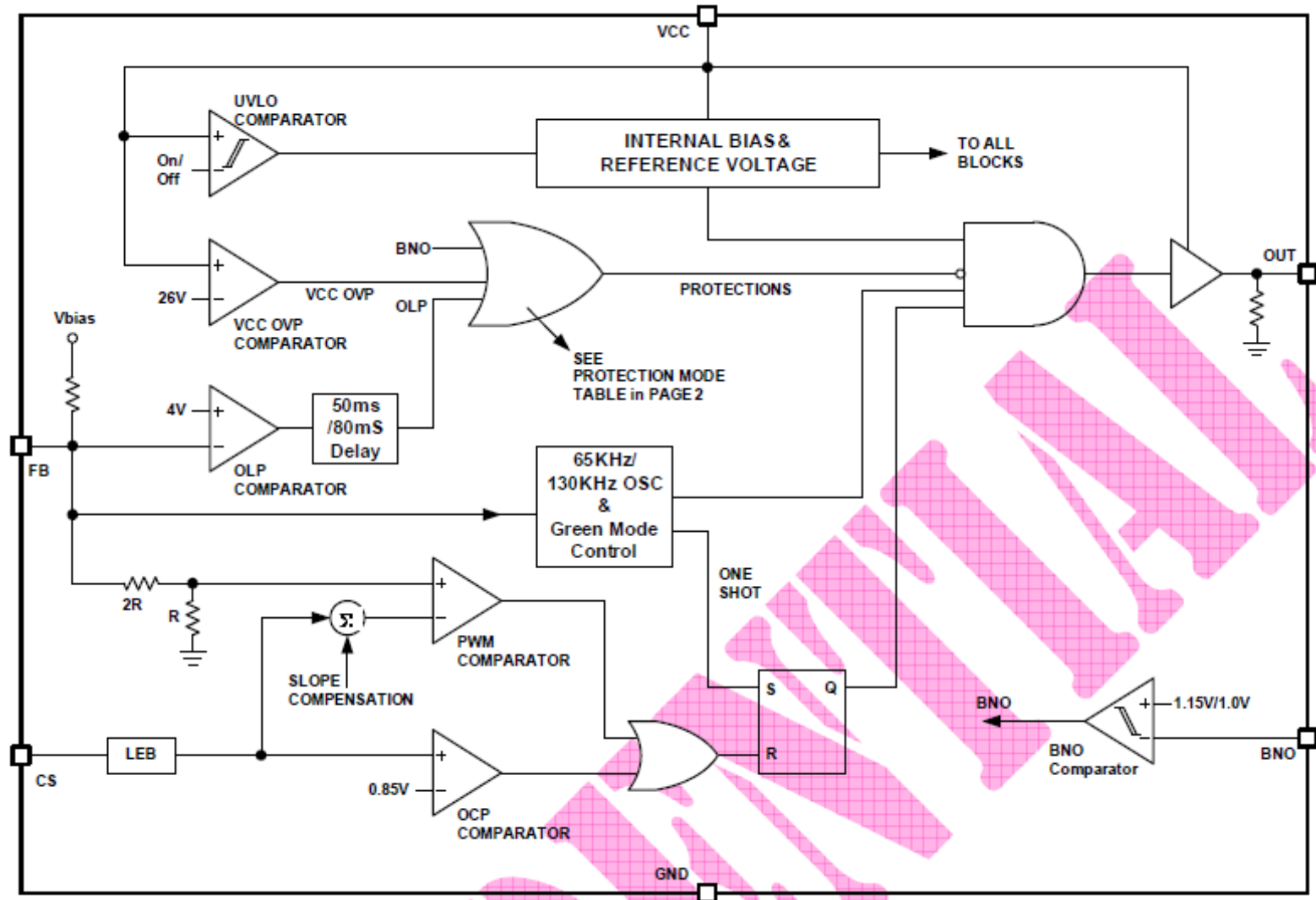
主要IC管脚及内部方框图

PIN DESCRIPTIONS

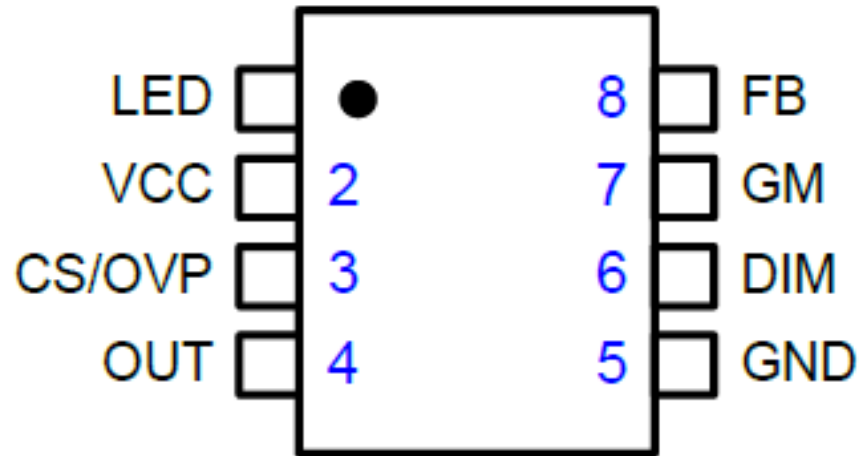


NAME	PIN NO.	DESCRIPTION
GND	1	Ground
FB	2	Voltage loop feedback pin. Connecting the collector of a photocoupler to this pin to close the voltage feedback loop.
BNO	3	Brownout Protection Pin. A resistor divider from this pin to bulk voltage to set the brownout level.
CS	4	Current loop feedback pin. Connect this pin to the primary sensing resistor to achieve the current mode control.
VCC	5	Supply voltage
OUT	6	MOSFET gate driver output

BLOCK DIAGRAM

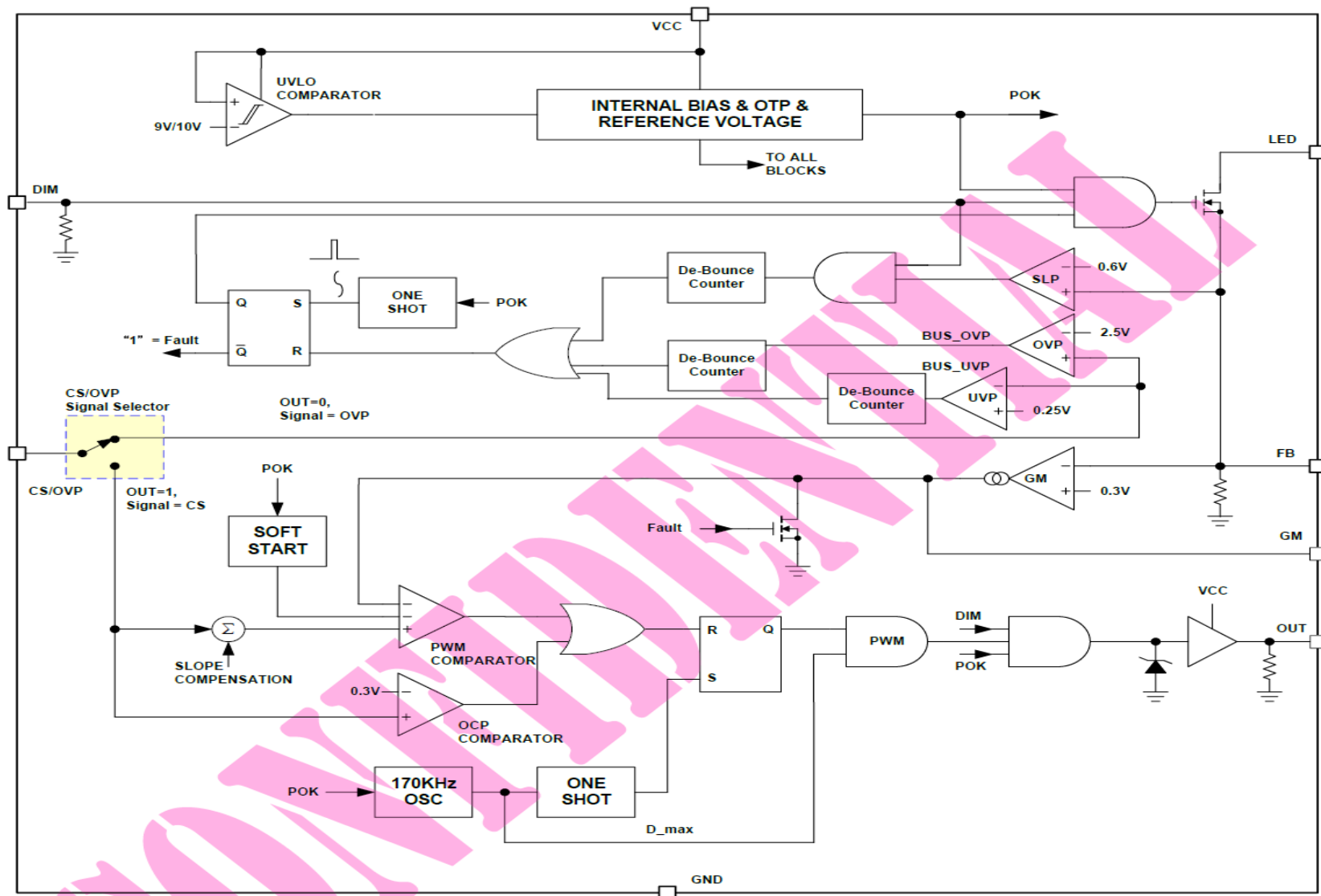


PIN DESCRIPTIONS



NAME	PIN NO.	DESCRIPTION
LED	1	Drain Terminal of Dimming MOSFET for LED PWM Dimming Control .
CS/OVP	3	Dual Function Pin for Both Over Voltage Protection of Boost Output and & Current Sensing of Boost Switch.
OUT	4	Output to Drive Boost MOSFET .
GM	7	Compensation Output .
FB	8	Source Terminal of Dimming MOSFET. It Is also the Feedback Input, Connecting LED Sensing Resistor .

BLOCK DIAGRAM



Thank you!

层次	点位	物料
1		040G 58162435A
1		0M1G 130 6120
1		0M1G1030 5120
1		0M1G1030 6 47 CR3
1		0Q1G 930 6 47 CR3
1		0Q1G 940 18 47 CR3
1	317G01	317GAAWF634XUG
1	SP01	378G0060498CAB
1	ECN9903	389G214A15NHS500X2
1	ECN9903	389G214A15NYH500X2
1		392GB1TA1A3C2C
1	ECN602	395GH20004AT078000
1	ECN602	395GH20004XT078000
1	ECN102	395GH20006AT010000
1	ECN102	395GH20006DT010000
1	ECN400	395GH20010DT054000
1	ECN400	395GH20010XT054000
1	ECN402	395GLT3032D0120000
1	ECN402	395GLT3032X0120000
1	RC01	398GR08BCPHN0001CH
1	RC01	398GR08BCPHN0001CR
1		708TJ9078130WPZ1CH
2		J44G6002514138
2		J45G 77 6
2		Q44G6002695 1A
2		Q44G6002900 78
2		Q44G9003 16
2		Q50G 4 10
2		Q52G1301 9
2		X07G009508302C
2		X07G012508302C
2		X50G500500600000JY
1	E750	750TBV315B62BDN000
1	E750	750TBV315B85EDN000
1		756TXGCC07D001020X
2	SMTF-U406	100TP7VK001D2X
2	U406	356G3333004612
1		CCPFG9DDX2
2		Z40G0002ALL01A
2	CN104	033G3802 3 BH L
2	CN9903	033G8029 3A H
2	IC9102	056G 139 9
2	R9114	061G152M33852T HX
2	C620	067G315M1016KV
2	C621	067G315M1016KV
2	FB8101	071G 55 29
2	FB8102	071G 55 29
2	FB9905	071G 55 29
2	L9902	073G 174 76 V
2	L9901	073G 174192 X

2	L8102	073G 253214 X
2	SW401	077G602S 3A HJ
2	CN603	088G302G7B1AYG
2	BD9901	093G 50460519
2	D8601	093G 60334
2	D9107	093G 60335
2	D9109	093G 60335
2	D9108	093G 60335
2	D9106	093G 60927
2	D9105	093G 60953
2	CN602	311GW200A04ABX
2	CN8604	311GW200A06ABX
2	CN108	311GW200C06AAL
2	CN400	311GW200C10ABL
2	CN402	311GW200C32AAL
2	NR9901	361G0058309LAW004A
2	C9901	363G107K334AUM
2	C9902	363G107K334AUM
2	C9901	363G107M334BEC
2	C9902	363G107M334BEC
2	C9101	367G215S680PHZ00AS
2	FB9908	371G0055021H02
2	FB9909	371G0055021H02
2	T9101	380GL32P171H00
2	CN103	388G078G137ACL0001
2	CN103	388G078G137AYG0001
2	CN102	388G352F6B3AXH
2	CN101	388G352F6B3AXH
2	SH102	388G510G502ACL
2	TU100	388G510H402AHC
2		705TXF93178
3		051G 200 1
3	D9101	093G 60329
3		0M1G1730 8120
3	HS9101	Q90G0219 2
2		AICCPFG9DDX2
3	C9100	065G 1K10193T
3	C9102	065G 1K22293S
3	C9906	065G306K47123R
3	C9907	065G306K47123R
3	C9905	065G306M15233R
3	C9123	067G 5153316KT
3	C9122	067G 5153316KT
3	C9118	067G 5154714KT
3	C9117	067G 5154714KT
3	C9106	067G 5154797KB
3	FB9910	071G 55 26 H
3	F9901	084G 56 4W
3	C9904	365G306J47063R
3	C9903	365G306K2206WR
3	C9908	365G306K2206WR

3	C8602	367G415X3317KT
3		SMTCCPFG9DDX2
4	IC9103	056G 158501
4	U702	056G 563114
4	U105	056G 662 18
4	U100	056G 665528
4	U101	056G 665528
4	Q702	057G 417511
4	Q404	057G 417511
4	Q504	057G 417511
4	Q701	057G 417511
4	Q503	057G 417511
4	Q600	057G 417511
4	Q8601	057G 600941
4	Q8603	057G 760 4A
4	Q700	057G 763940
4	RP505	061G 1260008JT
4	RP503	061G 1260008JT
4	RP502	061G 1260008JT
4	RP504	061G 1260008JT
4	RP406	061G 1263308JY
4	RP407	061G 1263308JY
4	RP412	061G 1263308JY
4	RP405	061G 1263308JY
4	RP409	061G 1263308JY
4	RP411	061G 1263308JY
4	RP410	061G 1263308JY
4	RP403	061G 1263308JY
4	RP404	061G 1263308JY
4	RP402	061G 1263308JY
4	RP413	061G 1263308JY
4	RP408	061G 1263308JY
4	RP400	061G 1263308JY
4	RP401	061G 1263308JY
4	R649	061G0402000 JF
4	R544	061G0402000 JF
4	R7011	061G0402000 JF
4	R543	061G0402000 JF
4	R541	061G0402000 JF
4	R113	061G0402000 JF
4	R461	061G0402000 JF
4	R4121	061G0402000 JT
4	R147	061G0402000 JY
4	R117	061G0402000 JY
4	R537	061G0402000 JY
4	R148	061G0402000 JY
4	R114	061G0402000 JY
4	R611	061G0402100 JY
4	R612	061G0402100 JY
4	R508	061G04021000FY
4	R4035	061G04021000FY

4	R4049	061G04021001FY
4	R4057	061G04021001FY
4	R4051	061G04021001FY
4	R4056	061G04021001FY
4	R4054	061G04021001FY
4	R621	061G04021001FY
4	R4036	061G04021001FY
4	R4050	061G04021001FY
4	R4055	061G04021001FY
4	R4048	061G04021001FY
4	R133	061G04021002FT
4	R132	061G04021002FT
4	R138	061G04021002FY
4	R131	061G04021002FY
4	R161	061G0402101 JF
4	R191	061G0402101 JF
4	R162	061G0402101 JF
4	R524	061G0402101 JY
4	R124	061G0402101 JY
4	R123	061G0402101 JY
4	R118	061G0402101 JY
4	R125	061G0402101 JY
4	R534	061G0402101 JY
4	R617	061G0402101 JY
4	R4077	061G0402101 JY
4	R523	061G0402101 JY
4	R609	061G0402101 JY
4	R533	061G0402101 JY
4	R115	061G0402101 JY
4	R535	061G0402102 JY
4	R4002	061G0402102 JY
4	R631	061G0402102 JY
4	R620	061G0402102 JY
4	R518	061G0402102 JY
4	R7037	061G0402102 JY
4	R7020	061G0402102 JY
4	R7043	061G0402102 JY
4	R7038	061G0402102 JY
4	R7031	061G0402102 JY
4	R525	061G0402102 JY
4	R656	061G0402102 JY
4	R7050	061G0402102 JY
4	R527	061G0402102 JY
4	R130	061G0402103 JF
4	R625	061G0402103 JF
4	R129	061G0402103 JF
4	R731	061G0402103 JF
4	R651	061G0402103 JT
4	R4001	061G0402103 JY
4	R135	061G0402103 JY
4	R655	061G0402103 JY

4	R4003	061G0402103 JY
4	R530	061G0402103 JY
4	R4080	061G0402103 JY
4	R653	061G0402103 JY
4	R4000	061G0402103 JY
4	R528	061G0402103 JY
4	R7007	061G0402103 JY
4	R531	061G0402103 JY
4	R520	061G0402103 JY
4	R4007	061G0402103 JY
4	R521	061G0402103 JY
4	R7035	061G0402103 JY
4	R4006	061G0402103 JY
4	R4109	061G0402103 JY
4	R502	061G0402103 JY
4	R7009	061G0402103 JY
4	R112	061G0402103 JY
4	R4008	061G0402103 JY
4	R7017	061G0402103 JY
4	R519	061G0402103 JY
4	R134	061G0402103 JY
4	R7036	061G0402104 JF
4	R627	061G0402104 JF
4	R7042	061G0402104 JF
4	R616	061G0402104 JY
4	R615	061G0402104 JY
4	R4071	061G0402105 JT
4	R727	061G04021053FT
4	R4101	061G04021201FY
4	R7039	061G04021212FF
4	R137	061G0402123 JY
4	R136	061G0402123 JY
4	R728	061G04021372FY
4	R610	061G0402152 JF
4	R7032	061G04021692FY
4	R4047	061G0402201 JY
4	R622	061G0402203 JF
4	R659	061G0402203 JF
4	R632	061G0402220 JY
4	R633	061G0402220 JY
4	R634	061G0402220 JY
4	R635	061G0402220 JY
4	R7025	061G04022202FT
4	R4053	061G0402241 JY
4	R4046	061G0402241 JY
4	R7048	061G0402241 JY
4	R7041	061G04022702FT
4	R509	061G04022702FT
4	R624	061G0402303 JF
4	R127	061G0402330 JT
4	R642	061G0402330 JT

4	R126	061G0402330 JT
4	R641	061G0402330 JT
4	R4069	061G0402330 JY
4	R4078	061G0402330 JY
4	R4067	061G0402330 JY
4	R4074	061G0402330 JY
4	R4075	061G0402330 JY
4	R4068	061G0402330 JY
4	R4073	061G0402330 JY
4	R4079	061G0402330 JY
4	R4072	061G0402330 JY
4	R4070	061G0402330 JY
4	R4076	061G0402330 JY
4	R7023	061G04023302FF
4	R116	061G0402472 JF
4	R603	061G0402472 JF
4	R602	061G0402472 JF
4	R643	061G0402472 JF
4	R644	061G0402472 JF
4	R4133	061G0402472 JF
4	R4132	061G0402472 JF
4	R4045	061G0402472 JY
4	R7018	061G0402472 JY
4	R7014	061G0402472 JY
4	R4052	061G0402472 JY
4	R529	061G0402472 JY
4	R7013	061G0402472 JY
4	R522	061G0402472 JY
4	R121	061G0402472 JY
4	R7010	061G0402472 JY
4	R122	061G0402472 JY
4	R648	061G0402473 JY
4	R4081	061G0402473 JY
4	R7049	061G0402474 JT
4	R623	061G0402474 JT
4	R619	061G04025101FF
4	R613	061G04025101FF
4	R119	061G04025103FF
4	R660	061G0402561 JF
4	R661	061G0402561 JF
4	R735	061G04026202FT
4	R4028	061G04026801FY
4	R128	061G04027509FY
4	R618	061G0402823 JF
4	R614	061G0402823 JF
4	R743	061G06031001FY
4	R7006	061G0603154 JY
4	R4131	061G0603154 JY
4	R7004	061G0603473 JY
4	R4130	061G0603473 JY
4	R174	061G06037509FF

4	R177	061G06037509FF
4	R175	061G06037509FF
4	R176	061G06037509FF
4	R9131	061G0805000 JT
4	R9103	061G08051003FT
4	R8615	061G0805102 JT
4	R8613	061G0805103 JT
4	R8603	061G0805103 JT
4	R9123	061G0805103 JT
4	R9121	061G0805103 JT
4	R9128	061G08051501FT
4	R9136	061G08051623FF
4	R729	061G08052208FT
4	R9120	061G08052402FF
4	R8605	061G08053302FT
4	R8607	061G08053302FT
4	R9134	061G08053303FF
4	R9106	061G08053303FF
4	R9104	061G08053303FF
4	R8616	061G0805334 JT
4	R9135	061G0805335 JF
4	R9101	061G0805335 JF
4	R9102	061G0805335 JF
4	R9111	061G08053609FT
4	R8602	061G08054709FT
4	R9115	061G0805471 JT
4	R9126	061G08055101FT
4	R8608	061G0805562 JF
4	R9112	061G0805680 JF
4	R8601	061G0805680 JF
4	R9125	061G08056800FT
4	R178	061G1206000 JY
4	R143	061G1206000 JY
4	R637	061G1206100 JY
4	R638	061G1206100 JY
4	R640	061G1206100 JY
4	R639	061G1206100 JY
4	R9137	061G1206123 JT
4	R9138	061G1206123 JT
4	R9132	061G1206123 JT
4	R9122	061G1206123 JT
4	R9139	061G1206123 JT
4	R8617	061G12062007FF
4	R8604	061G12062007FF
4	R8610	061G12062007FF
4	R9133	061G1206300 JT
4	R9130	061G1206300 JT
4	R9140	061G1206300 JT
4	R9141	061G1206300 JT
4	R9129	061G1206300 JT
4	R9116	061G1206300 JT

4	R9105	061G1206479 JT
4	R9901	061G1206754 JT
4	R9902	061G1206754 JT
4	R9905	061G1206754 JT
4	R9904	061G1206754 JT
4	R9906	061G1206754 JT
4	R9903	061G1206754 JT
4	R9109	061G12068202FT
4	R9117	061G12068202FT
4	R9107	061G12068202FT
4	R9108	061G12068202FT
4	R9110	061G12068202FT
4	R9118	061G12068202FT
4	C4090	065G040210031J A
4	C131	065G040210031J A
4	C4008	065G040210131J T
4	C654	065G040210232K F
4	C7132	065G040210232K F
4	C128	065G040210232K Y
4	C4033	065G040210232K Y
4	C4012	065G040210232K Y
4	C125	065G040210232K Y
4	C133	065G040210332K A
4	C7014	065G040210412K A
4	C7111	065G040210412K A
4	C507	065G040210412K A
4	C4025	065G040210412K A
4	C102	065G040210412K A
4	C7077	065G040210412K A
4	C4100	065G040210412K A
4	C4022	065G040210412K A
4	C7112	065G040210412K A
4	C7110	065G040210412K A
4	C144	065G040210412K A
4	C4040	065G040210412K A
4	C7113	065G040210412K A
4	C7104	065G040210412K A
4	C4049	065G040210412K A
4	C137	065G040210412K A
4	C611	065G040210412K A
4	C7059	065G040210412K A
4	C7091	065G040210412K A
4	C7042	065G040210412K A
4	C4050	065G040210412K A
4	C7031	065G040210412K A
4	C4031	065G040210412K A
4	C4081	065G040210412K A
4	C506	065G040210412K A
4	C4084	065G040210412K A
4	C7045	065G040210412K A
4	C7118	065G040210412K A

4	C115	065G040210412K A
4	C7049	065G040210412K A
4	C7048	065G040210412K A
4	C146	065G040210412K A
4	C4021	065G040210412K A
4	C7078	065G040210412K A
4	C612	065G040210412K A
4	C7060	065G040210412K A
4	C4026	065G040210412K A
4	C4028	065G040210412K A
4	C7069	065G040210412K A
4	C143	065G040210412K A
4	C4046	065G040210412K A
4	C147	065G040210412K A
4	C7079	065G040210412K A
4	C112	065G040210412K A
4	C4043	065G040210412K A
4	C4039	065G040210412K A
4	C4041	065G040210412K A
4	C7082	065G040210412K A
4	C109	065G040210412K A
4	C7051	065G040210412K A
4	C7125	065G040210412K A
4	C4045	065G040210412K A
4	C7108	065G040210412K A
4	C7056	065G040210412K A
4	C107	065G040210412K A
4	C619	065G040210412K A
4	C4017	065G040210412K A
4	C4101	065G040210412K A
4	C159	065G040210412K A
4	C160	065G040210412K A
4	C145	065G040210412K A
4	C7071	065G040210412K A
4	C4042	065G040210412K A
4	C4034	065G040210412K A
4	C4023	065G040210412K A
4	C4092	065G040210412K A
4	C4044	065G040210412K A
4	C7081	065G040210412K A
4	C132	065G040210412K A
4	C140	065G040210412K A
4	C7114	065G040210412K A
4	C4088	065G040210412K A
4	C7117	065G040210412K A
4	C4018	065G040210412K A
4	C4027	065G040210412K A
4	C7107	065G040210412K A
4	C141	065G040210412K A
4	C7068	065G040210412K A
4	C7016	065G040210412K A

4	C4020	065G040210412K A
4	C4032	065G040210412K A
4	C7055	065G040210412K A
4	C4024	065G040210412K A
4	C7034	065G040210412K A
4	C4082	065G040210412K A
4	C4083	065G040210412K A
4	C200	065G040210412K F
4	C7089	065G0402105A5K A
4	C153	065G0402105A5K A
4	C7088	065G0402105A5K A
4	C7124	065G0402105A5K A
4	C7122	065G0402105A5K A
4	C4047	065G0402105A5K A
4	C7092	065G0402105A5K A
4	C7043	065G0402105A5K A
4	C4030	065G0402105A5K A
4	C7085	065G0402105A5K A
4	C7097	065G0402105A5K A
4	C7096	065G0402105A5K A
4	C4016	065G0402105A5K A
4	C122	065G0402105A5K A
4	C7086	065G0402105A5K A
4	C7095	065G0402105A5K A
4	C7123	065G0402105A5K A
4	C7109	065G0402105A5K A
4	C4048	065G0402105A5K A
4	C7011	065G0402105A5K A
4	C4099	065G0402105A5K A
4	C7058	065G0402105A5K A
4	C121	065G0402105A5K A
4	C4029	065G0402105A5K A
4	C154	065G0402105A5K A
4	C120	065G0402105A5K A
4	C7099	065G0402105A5K A
4	C7120	065G0402105A5K A
4	C7094	065G0402105A5K A
4	C136	065G0402105A5K A
4	C7076	065G0402105A5K A
4	C7105	065G0402105A5K A
4	C7062	065G0402105A5K A
4	C7090	065G0402105A5K A
4	C4015	065G0402105A5K A
4	C7126	065G0402105A5K A
4	C7057	065G0402105A5K A
4	C7100	065G0402105A5K A
4	C7106	065G0402105A5K A
4	C7087	065G0402105A5K A
4	C7098	065G0402105A5K A
4	C7121	065G0402105A5K A
4	C7015	065G040210605M A

4	C634	065G040222031J F
4	C635	065G040222031J F
4	C7020	065G040222031J F
4	C637	065G040222031J F
4	C636	065G040222031J F
4	C142	065G040222232K F
4	C7052	065G040222415K Y
4	C7072	065G040222415K Y
4	C124	065G040233031J F
4	C117	065G040233031J F
4	C139	065G040233031J F
4	C138	065G040233031J F
4	C603	065G040233131J A
4	C4087	065G040239031J A
4	C4086	065G040239031J A
4	C148	065G040247031J Y
4	C657	065G040247031J Y
4	C149	065G040247031J Y
4	C607	065G040247031J Y
4	C118	065G040247312K F
4	C119	065G040247312K F
4	C150	065G040247312K F
4	C151	065G040247312K F
4	C4036	065G0402474A5K F
4	C4035	065G0402474A5K F
4	C4014	065G0402474A5K F
4	C7115	065G0402474A5K F
4	C4013	065G0402474A5K F
4	C7116	065G0402474A5K F
4	C4037	065G0402474A5K F
4	C655	065G040268132K F
4	C656	065G040268132K F
4	C617	065G060310432K F
4	C615	065G060310432K F
4	C4007	065G060310432K F
4	C731	065G060310432K F
4	C4116	065G060310432K Y
4	C604	065G060310512K A
4	C605	065G060310512K A
4	C508	065G060310512K A
4	C608	065G060310512K A
4	C7131	065G060310512K T
4	C7017	065G060310605M A
4	C130	065G060310605M M
4	C7063	065G060310605M M
4	C7033	065G060310605M M
4	C113	065G060310605M M
4	C7064	065G060310605M M
4	C629	065G060310605M M
4	C7044	065G060310605M M
4	C631	065G060310605M M

4	C630	065G060310605M M
4	C108	065G060310605M M
4	C7032	065G060310605M M
4	C705	065G060322232K Y
4	C7001	065G060322422K T
4	C732	065G0603225A5K A
4	C7065	065G0603225A5K A
4	C7075	065G0603225A5K A
4	C625	065G060347131J Y
4	C627	065G060347131J Y
4	C628	065G060347131J Y
4	C626	065G060347131J Y
4	C602	065G0603475A5K A
4	C4089	065G0603475A5K A
4	C601	065G0603475A5K A
4	C8609	065G080510031J Y
4	C8607	065G080510231J F
4	C8612	065G080510231J F
4	C9109	065G080510232K M
4	C8611	065G080510432K Y
4	C9108	065G080510432K Y
4	C8608	065G080510432K Y
4	C8604	065G080510432K Y
4	C8610	065G080510432K Y
4	C8603	065G080510432K Y
4	C9113	065G080510432K Y
4	C9104	065G080510532K M
4	C9110	065G080510532K M
4	C7127	065G080510615K A
4	C4113	065G080510615K A
4	C7128	065G080510615K A
4	C715	065G080510615K T
4	C197	065G0805106A5K A
4	C9105	065G080522131J Y
4	C9119	065G080522232K Y
4	C8613	065G080522432K M
4	C9112	065G080522432K Y
4	C740	065G080522605M M
4	C729	065G080522605M M
4	C730	065G080522605M M
4	C738	065G080522605M M
4	C735	065G080522605M M
4	C737	065G080522605M M
4	C736	065G080522605M M
4	C739	065G080522605M M
4	C613	065G080568412K F
4	C618	065G080568412K F
4	C616	065G080568412K F
4	C614	065G080568412K F
4	C9111	065G120610272K Y
4	C9121	065G120610272K Y

4	C8606	065G120610272K Y
4	C9107	065G120622272K Y
4	C9120	065G120622272K Y
4	C4093	067G311C1013LT
4	HDCP-U406	070GHDCP500HDC
4	FB600	071G 56K121 TA
4	FB700	071G 59A121 TA
4	L102	073G 6333810M
4	L705	073G253S 71 M
4	CN501	088G 34019K AV
4	CN502	088G 34019K AV
4	D100	093G 6433S
4	ZD700	093G 39S923 T
4	D700	093G 60S 37 T
4	ZD600	093G 64S500 SU
4	ZD406	093G 64S500 SU
4	ZD601	093G 64S500 SU
4	ZD404	093G 64S500 SU
4	ZD405	093G 64S500 SU
4	D501	093G 64S526SEM
4	T100	353G0045502J00
4	IC9101	356G0379006600
4	U704	356G056313200C00HF
4	U706	356G0563223607
4	U707	356G0563252601
4	U102	356G0566024600
4	U401	356G0568577605
4	U402	356G0615004613
4	U403	356G0615004613
4	U601	356G0616048601
4	U600	356G0616136
4	IC8601	356G0700008603
4	U406	356G3333004612
4	U701	356GD563006183
4	U708	356GD563006610
4	U703	356GD563006610
4	U710	356GD563010205
4	Q8602	357G07630620HF
4	Q500	357G07630620HF
4	Q9101	357G0763650600
4	Q401	357G0763A06
4	R7034	361G04022492FY
4	R7040	361G04022492FY
4	R110	361G04025108FT
4	R109	361G04025108FT
4	R108	361G04025108FT
4	R111	361G04025108FT
4	R101	361G06031330FY
4	R8618	361G12061508FY
4	R8619	361G12061508FY
4	R8614	361G12061808FT

4	R8606	361G12061808FT
4	R8609	361G12061808FT
4	R8611	361G12061808FT
4	C7080	365G040222502K000M
4	C4085	365G040222505M000T
4	C4001	365G040222505M000T
4	C104	365G040247931C000M
4	C105	365G040247931C000M
4	C4102	365G060310606M000A
4	C7103	365G060310606M000A
4	C103	365G060310606M000A
4	C100	365G060310606M000A
4	C7084	365G060310606M000A
4	C4038	365G060322606M000M
4	C7018	365G060322606M000M
4	C7019	365G060322606M000M
4	C4019	365G060322606M000M
4	C7119	365G060322606M000M
4	C7119	365G060322606M000T
4	C4019	365G060322606M000T
4	C7019	365G060322606M000T
4	C7018	365G060322606M000T
4	C4038	365G060322606M000T
4	C7101	365G080522606M000M
4	C7083	365G080522606M000M
4	C126	365G080547172K000F
4	C196	365G120610292K000F
4	C183	365G120647282K000Y
4	C168	365G120647282K000Y
4	C180	365G120647282K000Y
4	C182	365G120647282K000Y
4	C176	365G120647282K000Y
4	C127	365G120647282K000Y
4	C161	365G120647282K000Y
4	C135	365G120647282K000Y
4	C181	365G120647282K000Y
4	C179	365G120647282K000Y
4	MAC-U406	370G0MAC642CNT
4	HDCP2-U406	370GHDCP603PHP
4	FB601	371G042P121M02
4	FB704	371G042P121M02
4	FB712	371G042P121M02
4	FB706	371G042P221M00
4	FB705	371G042P221M00
4	FB101	371G042U102C00
4	FB100	371G042U102C00
4	L102	373G0603338FKD
4	L101	373G253S239D00
4	L603	373G253S245M00
4	L600	373G253S245M00
4	L601	373G253S245M00

4	L602	373G253S245M00
4	L704	373G253S356M00
4	L703	373G253S356M00
4	L701	373G253S526M00
4	CN105	388G342G8B5FCL
4	D9103	393G006432S0HF
4	D9104	393G006432S0HF
4	D8604	393G006432S0HF
4	D8602	393G006432S0HF
4	X100	393G022S60100J
4	X400	393G022S66300J
4	ZD9101	393G039SA2900T
4	E715	715G8525C01000004K
4	E715	715G8525C01000004Y
2	HS401	P90T0051301
2	HS601	Q90G6119 6
1		IRPFGXA9
2		SMTIRPFGXA9
3	R001	061G0402472 JT
3		709T67260ZS001
4		Q52G1701 7 XW
4		055G 100610
4		Q49G01WB1JL0HF0000
4		Q05G6054 1
3	Q001	057G 477900 T
3	R004	061G0402101 JT
3	R002	061G0402102 JT
3	R003	061G0402272 JT
3	C002	065G040210232K Y
3	C003	065G040210412K Y
3	C001	065G060310512K T
3	ZD001	093G 64 37 N
3	CN001	311GW125D05ACL
3	U001	356GS927052
3	LED001	381G0A1500R1GP
3	E715	715G6726R01003004C
3	E715	715G6726R01003004K
1		J40G000281356B
1		J40G032081309A
1		J41G32SV81308B
1		J44GJ9071010KM
1		J44GJ9072010KM
1		J44GJ90781302B00JA
1	E750	LVB315WHBN0AKT2F0Z
1	E750	LVB315WHBN0AM42F0Z
1		P40GD000813 9A
1		Q11G701016000L00PJ
1		Q12G71400610HF0AJF
1		Q36T 600 49 7
1		Q40G0001624 4A
1		Q45G88010TV05600SJ

1		Q45G99010TV03900SZ
1		Q49G 51500 HF
1		Q52G130118600000YY
1		Q52G1501150523 W
1		Q52G160119100A00YY
1		X15T264610100000JH
1		X15T8967701000GMNP
1		X33E0196001Z1C0100
1		X34E02990GM02G0200
1		X34E0302XLN01L0200
1		X34E0303XLN01L0200
1		X40G0001624 2A
1		X40G000181310C
1		X40G000881328A
1		X41G78DV81311E
1	R05201	X52G150100300000BK
1	R05201	X52G150100300000YY
1		X52G180137700000BK
1		X52G180144100000BK
1		X52G20012470000ABK

物料描述	组件数量	替代项目组
MANUAL P/N LABEL	1	
SCREW M3 6	2	
Screw	4	
SCREW M3 6	12	
SCREW	2	
screw	4	
WIFI USB IEEE 802.11 b/g/n SDWF-2F/GJ	1	
8 OHM 6W 132*45*39 0 UNIT	2	
AC POWER CORD 1500+60 for China	1	T
AC POWER CORD 1500+60 for China	1	
BATTERY 1.5V 2P R03(KI)2S/PG	1	
HARNESS 4Pin pitch2.0-B&R+B&W 320mm/200m	1	T
HARNESS 4Pin pitch2.0-B&R+B&W 320mm/200m	1	
HARNESS 5P pitch1.25-6P pitch2.0 600mm	1	
HARNESS 5P pitch1.25-6P pitch2.0 600mm	1	T
HARNESS 10P pitch2.0-5P pitch1.25 240mm	1	T
HARNESS 10P pitch2.0-5P pitch1.25 240mm	1	
LVDS CABLE 30P(1.0mm)-32P(2.0mm) 600mm	1	T
LVDS CABLE 30P(1.0mm)-32P(2.0mm) 600mm	1	
REMOTE PHILIPS RL134B chinese	1	
REMOTE PHILIPS RC44N chinese	1	T
PHILIPS 40(588 CH)	1	
PAPER BOARD	1	
PE PACKING	1.290	
PAPER BOARD	0.095	
PAPER BOARD	0.095	
Corner paper	0.190	
TIE (Y1900221)	37	
BIG TAPE FOR PHILIPS	193	
WOOD PALLET	0.024	
WOOD PALLET	0.024	
TIE	0.500	
LCD TPT315B5-WHBN0.K S8D62B BJ TPV	1	1
LCD TPT315B5-WHBN0.K S8945E BJ TPV BJ TP	1	1
MCU ASSY	1	T
PHP 32PHF5361/T3 EMMC V2.21 93368321	1	
EMMC THGBMDG5D1LBAIT 4GB FBGA153	1	
MAIN BOARD+POWER BOARD	1	
OTHER LABEL	1.020	
conn 2.0mm 3p	1	
CONN 3.96mm 3(2N)P R/A 11.88mm 9.5mm	1	
IC EL817M(X) photocoupler DIP-4	1	
RST MOF 0.33R 5% 2WS	1	
EC 100UF 20% 35V 8*7	1	
EC 100UF 20% 35V 8*7	1	
FERRITE BEAD	1	
FERRITE BEAD	1	
FERRITE BEAD	1	
INE FILTER 4mH MIN	1	
LINE FILTER 30MH MIN ET20 0.8A	1	

CHOKE COIL 47UH 10% ,HF	1	
TACT SW 4P 5.85 200g TSDBYC2202	1	
PHONE JACK R/A 7P BLACK 10.5mm	1	
BRIDGE KBP206G X0 2A 800V KBP 80A	1	
3HOTTKY SR506-44 5A 60V DO-201AD	1	
DIODE SR515 5A/150V DO-201AD	1	
DIODE SR515 5A/150V DO-201AD	1	
DIODE SR515 5A/150V DO-201AD	1	
SCHOTTKY PR1007G 1A 1000V DO-41	1	
SCHOTTKY FR107G-A0 1A 1000V DO-41	1	
A FER 2.0mm 4P	1	
WAFER 2.0mm 6P	1	
WAFER 2.0mm 6P	1	
WAFER 2.0mm 10P R/A B2000W10HTKB	1	
WAFER 2.0mm 32P	1	
NTCR 3R 15% 2.4W SCK10034LJY501	1	
CAP X2 0.33uF 10% 305V 18*13.5*7.5 MPX23	1	T
CAP X2 0.33uF 10% 305V 18*13.5*7.5 MPX23	1	T
CAP X2 330NF 20% 275V 18*7*12.5 B32922E2	1	
CAP X2 330NF 20% 275V 18*7*12.5 B32922E2	1	
EC 68uF 20% 450V 12.5*40 2000 hr 620mA H	1	
BEAD 6.5*12.5 700R 25% BF-I60100R-815	1	
BEAD 6.5*12.5 700R 25% BF-I60100R-815	1	
X'FMR 480uH 10% 8u EQ28 BCK-12877-HA	1	
RCA JACK 6P 1*3 Y/W/R --	1	
RCA JACK 6P 1*3 Y/W/R --	1	T
USB A TYPE R/A 6P 1*1 BLACK 8.4	1	
USB A TYPE R/A 6P 1*1 BLACK 8.4	1	
.F RF CONNECTOR 5P 1*1 GRAY 9.5MM	1	
RF IFP-013 4P 1*1 W --	1	
D9101 ASS'Y	1	
OIL FOR DISAPPEAR	0.018	
IODE FMEN-220A 20A/100V TO-220	1	
SCREW M3 8	1	
HEAT SINK 24.8 19.5 7	1	
MAIN BOARD+POWER BOARD FOR AI	1	
CAP CER 100PF 10% 1KV R	1	
CAP CER 2.2NF 10% 1KV R TAPING	1	
CAP Y1 470PF 10% 250V Y5P	1	
CAP Y1 470PF 10% 250V Y5P	1	
CAP Y1 1.5NF 20% 250V Y5U	1	
EC 330UF 20% 35V 10*12 5000H EV	1	
EC 330UF 20% 35V 10*12 5000H EV	1	
EC 470UF 20% 25V 10*12 5000 hr 1.45A EV	1	
EC 470UF 20% 25V 10*12 5000 hr 1.45A EV	1	
EC 4.7UF 20% 50V 5*11 EY	1	
BEAD 3.5*6.0*0.8 127R 25% BF-I35060R-79	1	
FUSE 4A 250V	1	
CAP Y1 47PF 5% 250V SL CD45SL2GA470JDSKA	1	
CAP Y1 22PF 10% 250V SL CT7-Y1-250V-06d	1	
CAP Y1 22PF 10% 250V SL CT7-Y1-250V-06d	1	

EC 330UF 20% 50V 12.5*12	1	
MAIN BOARD+POWER BOARD FOR SMT	1	
C/DC AS431ANTR-E1 150mA 40V SOT23-3	1	
LDO G1117-33T63UF 1A 3.3V SOT-223	1	
ESD PROTECT AZ1045-04F.R7G DFN2510P10E	1	
IC IC G5250M1T1U 1A SOT23-5	1	
IC IC G5250M1T1U 1A SOT23-5	1	
MMBT3904	1	
MMBT3904	1	
MMBT3904	1	
MMBT3904	1	
MMBT3904	1	
MMBT3904	1	
MOSFET AOD482 32A 100V TO-252	1	
DTA144WN3/S SOT-23	1	
MOSFET AO3401A SOT-23	1	
RST NET 0R 5% 1/16W	1	
RST NET 0R 5% 1/16W	1	
RST NET 0R 5% 1/16W	1	
RST NET 0R 5% 1/16W	1	
RST CHIP ARRAY 33R 1/16W 5% 8P4R	1	
RST CHIP ARRAY 33R 1/16W 5% 8P4R	1	
RST CHIP ARRAY 33R 1/16W 5% 8P4R	1	
RST CHIP ARRAY 33R 1/16W 5% 8P4R	1	
RST CHIP ARRAY 33R 1/16W 5% 8P4R	1	
RST CHIP ARRAY 33R 1/16W 5% 8P4R	1	
RST CHIP ARRAY 33R 1/16W 5% 8P4R	1	
RST CHIP ARRAY 33R 1/16W 5% 8P4R	1	
RST CHIP ARRAY 33R 1/16W 5% 8P4R	1	
RST CHIP ARRAY 33R 1/16W 5% 8P4R	1	
RST CHIP ARRAY 33R 1/16W 5% 8P4R	1	
RST CHIPR MAX0R05 1/16W FENGHUA	1	
RST CHIPR MAX0R05 1/16W FENGHUA	1	
RST CHIPR MAX0R05 1/16W FENGHUA	1	
RST CHIPR MAX0R05 1/16W FENGHUA	1	
RST CHIPR MAX0R05 1/16W FENGHUA	1	
RST CHIPR MAX0R05 1/16W FENGHUA	1	
RST CHIPR MAX0R05 1/16W FENGHUA	1	
RST 0402 0.05R MAX 1/16W -	1	
RST CHIPR MAX 0R05 OHM 1/16W YAGEO	1	
RST CHIPR MAX 0R05 OHM 1/16W YAGEO	1	
RST CHIPR MAX 0R05 OHM 1/16W YAGEO	1	
RST CHIPR MAX 0R05 OHM 1/16W YAGEO	1	
RST CHIPR MAX 0R05 OHM 1/16W YAGEO	1	
RST CHIPR 10 OHM +-5% 1/16W YAGEO	1	
RST CHIPR 10 OHM +-5% 1/16W YAGEO	1	
RST CHIP 100R 1/16W 1%	1	
RST CHIP 100R 1/16W 1%	1	

RST CHIP 1K 1/16W 1%		1
RST CHIP 1K 1/16W 1%		1
RST CHIP 1K 1/16W 1%		1
RST CHIP 1K 1/16W 1%		1
RST CHIP 1K 1/16W 1%		1
RST CHIP 1K 1/16W 1%		1
RST CHIP 1K 1/16W 1%		1
RST CHIP 1K 1/16W 1%		1
RST CHIP 1K 1/16W 1%		1
RST CHIP 1K 1/16W 1%		1
RST CHIPR 10K +-1% 1/16W TZAI YUAN		1
RST CHIPR 10K +-1% 1/16W TZAI YUAN		1
RST CHIP 10K 1/16W 1% YAGEO		1
RST CHIP 10K 1/16W 1% YAGEO		1
RST CHIPR 100 OHM +5% 1/16W FENGHUA		1
RST CHIPR 100 OHM +5% 1/16W FENGHUA		1
RST CHIPR 100 OHM +5% 1/16W FENGHUA		1
RST CHIPR 100 OHM +5% 1/16W YAGEO		1
RST CHIPR 100 OHM +5% 1/16W YAGEO		1
RST CHIPR 100 OHM +5% 1/16W YAGEO		1
RST CHIPR 100 OHM +5% 1/16W YAGEO		1
RST CHIPR 100 OHM +5% 1/16W YAGEO		1
RST CHIPR 100 OHM +5% 1/16W YAGEO		1
RST CHIPR 100 OHM +5% 1/16W YAGEO		1
RST CHIPR 100 OHM +5% 1/16W YAGEO		1
RST CHIPR 100 OHM +5% 1/16W YAGEO		1
RST CHIPR 100 OHM +5% 1/16W YAGEO		1
RST CHIPR 100 OHM +5% 1/16W YAGEO		1
RST CHIPR 100 OHM +5% 1/16W YAGEO		1
RST CHIPR 100 OHM +5% 1/16W YAGEO		1
RST CHIPR 1KOHM +5% 1/16W YAGEO		1
RST CHIPR 1KOHM +5% 1/16W YAGEO		1
RST CHIPR 1KOHM +5% 1/16W YAGEO		1
RST CHIPR 1KOHM +5% 1/16W YAGEO		1
RST CHIPR 1KOHM +5% 1/16W YAGEO		1
RST CHIPR 1KOHM +5% 1/16W YAGEO		1
RST CHIPR 1KOHM +5% 1/16W YAGEO		1
RST CHIPR 1KOHM +5% 1/16W YAGEO		1
RST CHIPR 1KOHM +5% 1/16W YAGEO		1
RST CHIPR 1KOHM +5% 1/16W YAGEO		1
RST CHIPR 1KOHM +5% 1/16W YAGEO		1
RST CHIPR 1KOHM +5% 1/16W YAGEO		1
RST CHIPR 1KOHM +5% 1/16W YAGEO		1
RST CHIPR 1KOHM +5% 1/16W YAGEO		1
RST CHIPR 1KOHM +5% 1/16W YAGEO		1
RST CHIPR 10KOHM +5% 1/16W FENGHUA		1
RST CHIPR 10KOHM +5% 1/16W FENGHUA		1
RST CHIPR 10KOHM +5% 1/16W FENGHUA		1
RST CHIPR 10KOHM +5% 1/16W FENGHUA		1
RST CHIP 10K 1/16W 5% TZAI YUAN		1
RST CHIPR 10KOHM +5% 1/16W YAGEO		1
RST CHIPR 10KOHM +5% 1/16W YAGEO		1
RST CHIPR 10KOHM +5% 1/16W YAGEO		1

RST CHIPR 10KOHM +-5% 1/16W YAGEO	1	
RST CHIPR 10KOHM +-5% 1/16W YAGEO	1	
RST CHIPR 10KOHM +-5% 1/16W YAGEO	1	
RST CHIPR 10KOHM +-5% 1/16W YAGEO	1	
RST CHIPR 10KOHM +-5% 1/16W YAGEO	1	
RST CHIPR 10KOHM +-5% 1/16W YAGEO	1	
RST CHIPR 10KOHM +-5% 1/16W YAGEO	1	
RST CHIPR 10KOHM +-5% 1/16W YAGEO	1	
RST CHIPR 10KOHM +-5% 1/16W YAGEO	1	
RST CHIPR 10KOHM +-5% 1/16W YAGEO	1	
RST CHIPR 10KOHM +-5% 1/16W YAGEO	1	
RST CHIPR 10KOHM +-5% 1/16W YAGEO	1	
RST CHIPR 10KOHM +-5% 1/16W YAGEO	1	
RST CHIPR 10KOHM +-5% 1/16W YAGEO	1	
RST CHIPR 10KOHM +-5% 1/16W YAGEO	1	
RST CHIPR 10KOHM +-5% 1/16W YAGEO	1	
RST CHIPR 10KOHM +-5% 1/16W YAGEO	1	
RST CHIPR 10KOHM +-5% 1/16W YAGEO	1	
RST CHIPR 10KOHM +-5% 1/16W YAGEO	1	
RST CHIPR 10KOHM +-5% 1/16W YAGEO	1	
RST CHIPR 10KOHM +-5% 1/16W YAGEO	1	
RST CHIPR 10KOHM +-5% 1/16W YAGEO	1	
RST CHIPR 100KOHM +-5% 1/16W FENGHUA	1	
RST CHIPR 100KOHM +-5% 1/16W FENGHUA	1	
RST CHIPR 100KOHM +-5% 1/16W FENGHUA	1	
RST CHIPR 100KOHM +-5% 1/16W YAGEO	1	
RST CHIPR 100KOHM +-5% 1/16W YAGEO	1	
RST CHIP R 1Mohm 1/16W +/-5% TZAI YUAN	1	
RST 0402 105K 1/16W 1% TZAI YUAN	1	
RST CHIP 1.2K 1/16W 1%	1	
RST 0402 12.1K 1% 1/16W FENGHUA	1	
RST CHIPR 12KOHM £«-5£¥ 1/16W YAGEO	1	
RST CHIPR 12KOHM £«-5£¥ 1/16W YAGEO	1	
RST CHIP 13.7K 1/16W 1%	1	
RST CHIPR 1.5KOHM +-5% 1/16W FENGHUA	1	
RST 0402 16.9K 1% 1/16W -	1	
RST CHIP 200R 1/16W 5% YAGEO	1	
RST CHIPR 20KOHM +-5% 1/16W FENGHUA	1	
RST CHIPR 20KOHM +-5% 1/16W FENGHUA	1	
RST CHIPR 22 OHM +-5% 1/16W YAGEO	1	
RST CHIPR 22 OHM +-5% 1/16W YAGEO	1	
RST CHIPR 22 OHM +-5% 1/16W YAGEO	1	
RST CHIPR 22 OHM +-5% 1/16W YAGEO	1	
RST CHIP 22K 1/16W 1% TZAI YUAN	1	
RST CHIPR 240 OHM +-5% 1/16W YAGEO	1	
RST CHIPR 240 OHM +-5% 1/16W YAGEO	1	
RST CHIPR 240 OHM +-5% 1/16W YAGEO	1	
RST 0402 27K 1% 1/16W	1	
RST 0402 27K 1% 1/16W	1	
RST 0402 30K 5% 1/16W	1	
RST CHIP 33R 1/16W 5% TZAI YUAN	1	
RST CHIP 33R 1/16W 5% TZAI YUAN	1	

RST CHIP 33R 1/16W 5% TZAI YUAN	1	
RST CHIP 33R 1/16W 5% TZAI YUAN	1	
RST CHIPR 33 OHM £«-5£¥ 1/16W YAGEO	1	
RST CHIPR 33 OHM £«-5£¥ 1/16W YAGEO	1	
RST CHIPR 33 OHM £«-5£¥ 1/16W YAGEO	1	
RST CHIPR 33 OHM £«-5£¥ 1/16W YAGEO	1	
RST CHIPR 33 OHM £«-5£¥ 1/16W YAGEO	1	
RST CHIPR 33 OHM £«-5£¥ 1/16W YAGEO	1	
RST CHIPR 33 OHM £«-5£¥ 1/16W YAGEO	1	
RST CHIPR 33 OHM £«-5£¥ 1/16W YAGEO	1	
RST CHIPR 33 OHM £«-5£¥ 1/16W YAGEO	1	
RST CHIPR 33 OHM £«-5£¥ 1/16W YAGEO	1	
RST CHIPR 33 OHM £«-5£¥ 1/16W YAGEO	1	
RST CHIPR 33 OHM £«-5£¥ 1/16W YAGEO	1	
RST 0402 33K 1% 1/16W FENGHUA	1	
RST CHIPR 4.7KOHM +-5% 1/16W FENGHUA	1	
RST CHIPR 4.7KOHM +-5% 1/16W FENGHUA	1	
RST CHIPR 4.7KOHM +-5% 1/16W FENGHUA	1	
RST CHIPR 4.7KOHM +-5% 1/16W FENGHUA	1	
RST CHIPR 4.7KOHM +-5% 1/16W FENGHUA	1	
RST CHIPR 4.7KOHM +-5% 1/16W FENGHUA	1	
RST CHIPR 4.7KOHM +-5% 1/16W FENGHUA	1	
RST 0402 4.7K 5% 1/16W RC0402JR-074K7L	1	
RST 0402 4.7K 5% 1/16W RC0402JR-074K7L	1	
RST 0402 4.7K 5% 1/16W RC0402JR-074K7L	1	
RST 0402 4.7K 5% 1/16W RC0402JR-074K7L	1	
RST 0402 4.7K 5% 1/16W RC0402JR-074K7L	1	
RST 0402 4.7K 5% 1/16W RC0402JR-074K7L	1	
RST 0402 4.7K 5% 1/16W RC0402JR-074K7L	1	
RST 0402 4.7K 5% 1/16W RC0402JR-074K7L	1	
RST 0402 4.7K 5% 1/16W RC0402JR-074K7L	1	
RST 0402 4.7K 5% 1/16W RC0402JR-074K7L	1	
RST CHIPR 47KOHM +-5% 1/16W YAGEO	1	
RST CHIPR 47KOHM +-5% 1/16W YAGEO	1	
RST CHIP 470K 1/16W 5% TZAI YUAN	1	
RST CHIP 470K 1/16W 5% TZAI YUAN	1	
RST CHIP 5.1K 1/16W 1% FENGHUA	1	
RST CHIP 5.1K 1/16W 1% FENGHUA	1	
RST 0402 510K 1% 1/16W FENGHUA	1	
RST CHIP 560R 1/16W 5% FENGHUA	1	
RST CHIP 560R 1/16W 5% FENGHUA	1	
RST CHIP 62K 1/16W 1% TZAI YUAN	1	
RST CHIP 6K8 1/16W 1%	1	
RST CHIP 75R 1/16W 1%	1	
RST CHIPR 82KOHM +-5% 1/16W FENGHUA	1	
RST CHIPR 82KOHM +-5% 1/16W FENGHUA	1	
RST CHIPR 1KOHM +-1% 1/10W YAGEO	1	
RST CHIPR 150K +-5% 1/10W YAGEO	1	
RST CHIPR 150K +-5% 1/10W YAGEO	1	
RST CHIPR 47KOHM 1/10W YAGEO	1	
RST CHIPR 47KOHM 1/10W YAGEO	1	
ST CHIPR 75 OHM +-1% 1/10W FENGHUA	1	

[illegible]

[illegible]

[illegible]

[illegible]

[illegible]

CAP 0603 10UF 20% 6.3V X5R	1	
CAP 0603 10UF 20% 6.3V X5R	1	
CAP 0603 10UF 20% 6.3V X5R	1	
CAP CHIP 0603 2N2 50V X7R +/-10%	1	
CAP CHIP0603 220NF K 25V X7R	1	
CAP 0603 2.2UF K 10V X5R	1	
CAP 0603 2.2UF K 10V X5R	1	
CAP 0603 2.2UF K 10V X5R	1	
CAP CHIP 0603 470P 50V NP0 +/-5%	1	
CAP CHIP 0603 470P 50V NP0 +/-5%	1	
CAP CHIP 0603 470P 50V NP0 +/-5%	1	
CAP CHIP 0603 470P 50V NP0 +/-5%	1	
CAP 0603 4.7UF 10% 10V X5R CL10A475KP8NN	1	
CAP 0603 4.7UF 10% 10V X5R CL10A475KP8NN	1	
CAP 0603 4.7UF 10% 10V X5R CL10A475KP8NN	1	
CAP CHIP 0805 10PF J 50V NPO	1	
CAP 0805 1NF 5% 50V NPO	1	
CAP 0805 1NF 5% 50V NPO	1	
CAP 0805 1NF 10% 50V X7R	1	
CAP CHIP 0805 100N 50V X7R +/-10%	1	
CAP CHIP 0805 100N 50V X7R +/-10%	1	
CAP CHIP 0805 100N 50V X7R +/-10%	1	
CAP CHIP 0805 100N 50V X7R +/-10%	1	
CAP CHIP 0805 100N 50V X7R +/-10%	1	
CAP CHIP 0805 100N 50V X7R +/-10%	1	
CAP CHIP 0805 100N 50V X7R +/-10%	1	
CAP 0805 1UF 10% 50V X7R	1	
CAP 0805 1UF 10% 50V X7R	1	
CAP 0805 10UF 10% 16V X5R	1	
CAP 0805 10UF 10% 16V X5R	1	
CAP 0805 10UF 10% 16V X5R	1	
CHIP 10uF 16V X5R 0805	1	
CAP 0805 10UF 10% 10V X5R	1	
CAP CHIP 0805 220P 50V NP0 +/-5%	1	
CAP CHIP 0805 2N2 50V X7R +/-10%	1	
CAP 0805 220nF 10% 50V X7R GRM21BR71H224	1	
CAP CHIP 0805 220N 50V X7R +/-10%	1	
CAP 0805 22UF 20% 6.3V X5R	1	
CAP 0805 22UF 20% 6.3V X5R	1	
CAP 0805 22UF 20% 6.3V X5R	1	
CAP 0805 22UF 20% 6.3V X5R	1	
CAP 0805 22UF 20% 6.3V X5R	1	
CAP 0805 22UF 20% 6.3V X5R	1	
CAP 0805 22UF 20% 6.3V X5R	1	
CAP 0805 22UF 20% 6.3V X5R	1	
CAP CHIP 0805 680NF K 16V X7R	1	
CAP CHIP 0805 680NF K 16V X7R	1	
CAP CHIP 0805 680NF K 16V X7R	1	
CAP CHIP 0805 680NF K 16V X7R	1	
CAP 1206 1NF 10% 500V X7R	1	
CAP 1206 1NF 10% 500V X7R	1	

CAP 1206 1NF 10% 500V X7R	1	
CER 1206 2N2 500V X7R 10%	1	
CER 1206 2N2 500V X7R 10%	1	
EC SMD 100UF 20% 16V 6.3*7.7 3000 hr 2	1	
HDCP CODE	1	
HIP BEAD 120R/6000mA HCB2012KF-121T60	1	
CHIP BEAD 120R/3000mA HCB1608KF-121T30	1	
CHIP INDUCTOR 0.33UH 10% 0.75R 100mA	1	
SMD CHOKE 2.2UH 20% 0.020R 8.2A	1	
HDMI HEADER R/A 19P BLACK H=8.4	1	
HDMI HEADER R/A 19P BLACK H=8.4	1	
switching diode BAV99	1	
ZENER BZX84B6V8 6.8 0.5 SOT-23	1	
SCHOTTKY SM260A 2A 40V DO-214AC	1	
ESD MLVG04025R0QV05BP INPAQ	1	
ESD MLVG04025R0QV05BP INPAQ	1	
ESD MLVG04025R0QV05BP INPAQ	1	
ESD MLVG04025R0QV05BP INPAQ	1	
ESD MLVG04025R0QV05BP INPAQ	1	
SWITCHING BAS316WS 250mA 100V SOD323	1	
LAN FILTER S16013 LF	1	
AC/DC PF6003AG SOT-26	1	
LDO AZ1117CH-1.2TRG1 1A 1.2V SOT-223	1	
LDO LD1117AG33AA3AR 1A 3.3V SOT-223	1	
LDO UZ1084G33TN3R 5A 3.3V TO-252	1	
Silicon Tuner MxL661-AG-R	1	
SCALER Hi3751ARBCV3100D00 PBGA-577	1	
DRAM NT5CB256M16DP-EK 4Gb VFBGA-96	1	
DRAM NT5CB256M16DP-EK 4Gb VFBGA-96	1	
AUDIO AD82584D-LG48NAR 20 E-LQFP-48L 7x7	1	
AUDIO AD22650-QH14NAR - TSSOP-14	1	
LED DRIVER PF7708BS SOP-8	1	
EMMC THGBMDG5D1LBAIT 4GB FBGA153	1	
DC/DC SY8009BABC 2A 3.3V SOT23-6	1	
DC/DC TPS563201DDCR 17V 3A SOT-23-6	1	
DC/DC TPS563201DDCR 17V 3A SOT-23-6	1	
DC/DC SY8366QNC 6A 28V QFN3x3-10	1	
.F MOSFET 2N7002K R1 00001 0.3A 60V	1	
.F MOSFET 2N7002K R1 00001 0.3A 60V	1	
MOSFET TK8P65W 7.8A 650V DPAK	1	
MOSFET AO3407A -25A -30V 1.4W SOT23	1	
RST 0402 24.9K 1% 1/16W RC0402FR-0724K9	1	
RST 0402 24.9K 1% 1/16W RC0402FR-0724K9	1	
RST 0402 5.1 ohm 1% 1/16W SMD04025R1F	1	
RST 0402 5.1 ohm 1% 1/16W SMD04025R1F	1	
RST 0402 5.1 ohm 1% 1/16W SMD04025R1F	1	
RST 0402 5.1 ohm 1% 1/16W SMD04025R1F	1	
RST 0603 133Ω 1% 1/10W N/A	1	
RST 1206 1.5R 1% 1/4W RC1206FR-071R5L	1	
RST 1206 1.5R 1% 1/4W RC1206FR-071R5L	1	
RST 1206 1.8R 1% 1/4W SMD12061R8F	1	

RST 1206 1.8R 1% 1/4W SMD12061R8F	1	
RST 1206 1.8R 1% 1/4W SMD12061R8F	1	
RST 1206 1.8R 1% 1/4W SMD12061R8F	1	
CAP 0402 2.2uF 20% 6.3V X7S GRM155C70J2	1	
CAP 0402 2.2UF 20% 6.3V X5R JMK105BJ225M	1	
CAP 0402 2.2UF 20% 6.3V X5R JMK105BJ225M	1	
CAP 0402 4.7pF 0.25pF 50V NP0 GRM1555C1H	1	
CAP 0402 4.7pF 0.25pF 50V NP0 GRM1555C1H	1	
CAP 0603 10uF 20% 6.3V X6S CL10X106MQ8N	1	
CAP 0603 10uF 20% 6.3V X6S CL10X106MQ8N	1	
CAP 0603 10uF 20% 6.3V X6S CL10X106MQ8N	1	
CAP 0603 10uF 20% 6.3V X6S CL10X106MQ8N	1	
CAP 0603 10uF 20% 6.3V X6S CL10X106MQ8N	1	
CAP 0603 22UF 20% 6.3V X6S GRM188C80J226	1	
CAP 0603 22UF 20% 6.3V X6S GRM188C80J226	1	
CAP 0603 22UF 20% 6.3V X6S GRM188C80J226	1	
CAP 0603 22UF 20% 6.3V X6S GRM188C80J226	1	
CAP 0603 22UF 20% 6.3V X6S GRM188C80J226	1	
CAP 0603 22uF 20% 6.3V X6S JMK107BC6226	1	T
CAP 0603 22uF 20% 6.3V X6S JMK107BC6226	1	T
CAP 0603 22uF 20% 6.3V X6S JMK107BC6226	1	T
CAP 0603 22uF 20% 6.3V X6S JMK107BC6226	1	T
CAP 0603 22uF 20% 6.3V X6S JMK107BC6226	1	T
CAP 0805 22uF 20% 6.3V X6S GRM21BC80J22	1	
CAP 0805 22uF 20% 6.3V X6S GRM21BC80J22	1	
CAP 0805 470pF 10% 500V X7R -	1	
CAP 1206 1NF 10% 2KV X7R 1206B102K202NT	1	
CAP 1206 4.7nf 10% 1KV X7R CC1206KKX7RC	1	
CAP 1206 4.7nf 10% 1KV X7R CC1206KKX7RC	1	
CAP 1206 4.7nf 10% 1KV X7R CC1206KKX7RC	1	
CAP 1206 4.7nf 10% 1KV X7R CC1206KKX7RC	1	
CAP 1206 4.7nf 10% 1KV X7R CC1206KKX7RC	1	
CAP 1206 4.7nf 10% 1KV X7R CC1206KKX7RC	1	
CAP 1206 4.7nf 10% 1KV X7R CC1206KKX7RC	1	
CAP 1206 4.7nf 10% 1KV X7R CC1206KKX7RC	1	
CAP 1206 4.7nf 10% 1KV X7R CC1206KKX7RC	1	
Buy key CNTV腾讯版MAC for 海	1	
CD CD HDCP2.2 code for Wifi Miracast	1	
CHIP BEAD 0402 120R 25% MGLB1005M121T1R3	1	
CHIP BEAD 0402 120R 25% MGLB1005M121T1R3	1	
CHIP BEAD 0402 120R 25% MGLB1005M121T1R3	1	
CHIP BEAD 0402 220R 25% MGLB1005M221T1R	1	
CHIP BEAD 0402 220R 25% MGLB1005M221T1R	1	
CHIP BEAD 0402 1000 25% FCM1005KF-102T0	1	
CHIP BEAD 0402 1000 25% FCM1005KF-102T0	1	
CHIP IND 0.33uH 10% 0.1 0.75 SDFL1608LR3	1	T
SMD CHOKE 75R 25% 280mA 75R BW21S7511B01	1	
SMD CHOKE 22uH 20% 1A 0.225R MPIT4030-2	1	
SMD CHOKE 22uH 20% 1A 0.225R MPIT4030-2	1	
SMD CHOKE 22uH 20% 1A 0.225R MPIT4030-2	1	

SMD CHOKE 22uH 20% 1A 0.225R MPIT4030-2	1	
0804D09092	1	
0804D09092	1	
SMD CHOKE 4.7uH 20% 0.9A 0.444R MPIH2016	1	
RJ45 R/A 8P 1*1 BLACK 10.75mm	1	
SWITCHING 1N4148W 0.15A 75V SOD-123	1	
SWITCHING 1N4148W 0.15A 75V SOD-123	1	
SWITCHING 1N4148W 0.15A 75V SOD-123	1	
SWITCHING 1N4148W 0.15A 75V SOD-123	1	
CRYSTAL NXH16.000AE18F-KAB8-PA 16MHz 18	1	
CRYSTAL NXK24.000AE18F-KAB7-2 24.000MHz	1	
ZENER BZT52-B15 15V 0.41 SOD-123	1	
MAIN PCB FR4 DS 193*140*1.6mm	1	T
MAIN PCB FR4 DS 193*140*1.6mm	1	
Heat Sink	1	
HEAT SINK 25 10	1	
IR BOARD 715G6726R010030040	1	
IR BOARD FOR SMT	1	
RST CHIP 4K7 1/16W 5% TZAI YUAN	1	
COMSUMPTIVE ASSY	1	
MESH PRINTTING PAPER	0.050	
Solder Paste	0.028	
Water-based Cleaning Agent - Decotron 23	0.100	
SHEET	0.003	
RA SIG SM BC847C (KEC0) R	1	
RST CHIP 100R 1/16W 5% TZAI YUAN	1	
RST CHIP 1K 1/16W 5% TZAI YUAN	1	
RST CHIP 2K7 1/16W 5% TZAI YUAN	1	
CAP 0402 1NF 10% 50V X7R CC0402KRX7R9BB	1	
CAP 0402 100NF 10% 16V X7R	1	
CAP 0603 1UF 10% 16V X7R EMK107B7105KA	1	
VPORT0603100KV05	1	
CONN 1.25mm 5P V/T B1254W05VUM2	1	
IR RECEIVER TSOP75436WTT 36 KHZ	1	
LED R GPSS008RC4	1	
IR PCB FR4 DS 35x15x1.6mm	1	
IR PCB FR4 DS 35x15x1.6mm	1	T
CEL LABEL --	1	
RATING LABEL 32PHF5361/T3	1	
QSG 32PHF5361/T3 china	1	
CUSHION-T NA China(2002)	1	
CUSHION-B NA China(2002)	1	
ARTWORK CARTON 32PHF 5361/5301/5311/5351	1	
TPT315B5-WHBN0.K S8D62B BJ TPV	1	1
TPT315B5-WHBN0.K S8945E BJ TPV	1	1
A4 PALLET LABEL -for A4 paper	0.050	
PCB-SUPPORT D3.5xH16	1	
HEAT PAD	1	
NON-WOVEN FABRIC	2	
产线需求的栈板LABEL	0.050	
PROTECT BAG	1	

PROTECT BAG	1	
Cleaning Naphtha	1.842	
TAPE	20	
INSULATING PLATE	56	
TAPE	24	
BKT_IO_BT_M	1	
BKT_IO_SIDE	1	
DECO_BEZEL	1	
REAR_COVER_NA	1	
BASE_LEFT_NA	1	
BASE_RIGHT_NA	1	
Label for screw pe bag	1	
CARTON LABEL	1	
OTHER LABEL 开机必读标签	1	
WARRANTY CARD TPV address china	1	
TAPE_INSULATING	12	
TAPE_INSULATING	12	T
INSULATING SHEET	1	
INSULATING SHEET	1	
TAPE	95	

HI3751AV500 DEMO VER.A

Update 2014.02.07

Hi3751AV500 Schematic Circuit Version and Page Information

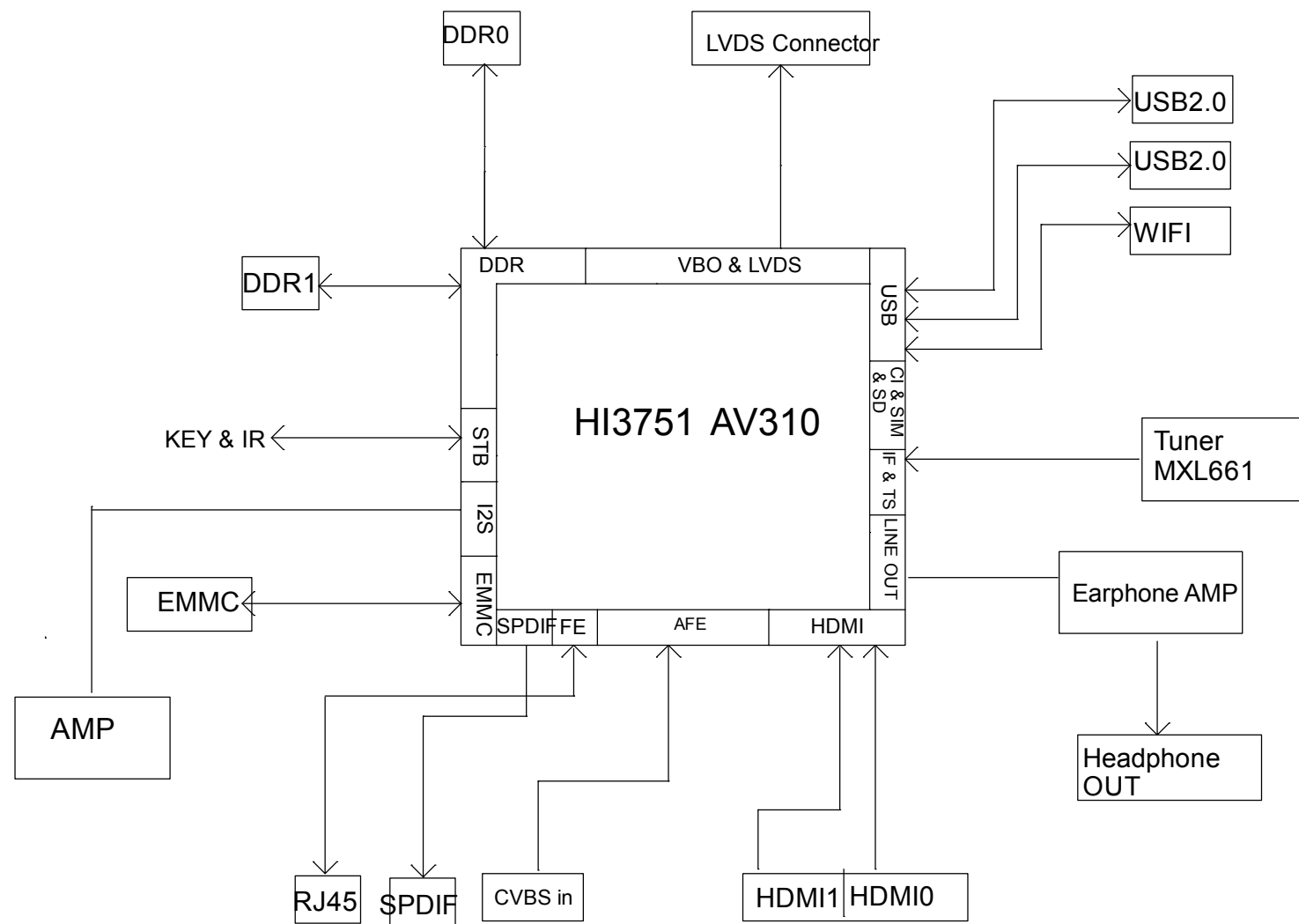
Page	Comment	Page	Comment
1	Information indicator	12	V-BY-ONE
2	Block diagram	13	USB2.0 & USB3.0 & WIFI
3	Power tree & Boot strap	14	CI & CA
4	Power and Signal switching control	15	Tuner socket
5	Power supply management	16	MIC YPBPR & AV IN & CVBS OUT
6	UART & JTAG socket & IR & KEY	17	Audio Output
7	Chip Power	18	AMP
8	DDRIII_Chip Power	19	HDMI0 & MHL
9	DDRIII_0	20	HDMI1(ARC) & HDMI2
10	DDRIII_1	21	Ethernet & SD
11	eMMC & eeprom & xtal	22	Power switching control



TPV (Top Victory Electronics Co., Ltd.)		OEM MODEL		Size	A3
新隔瓜銅板V310		TPV MODEL		Rev	
Key Component		PCB NAME		称 號	
Date	Friday, July 01, 2016	Sheet	1 of 21		

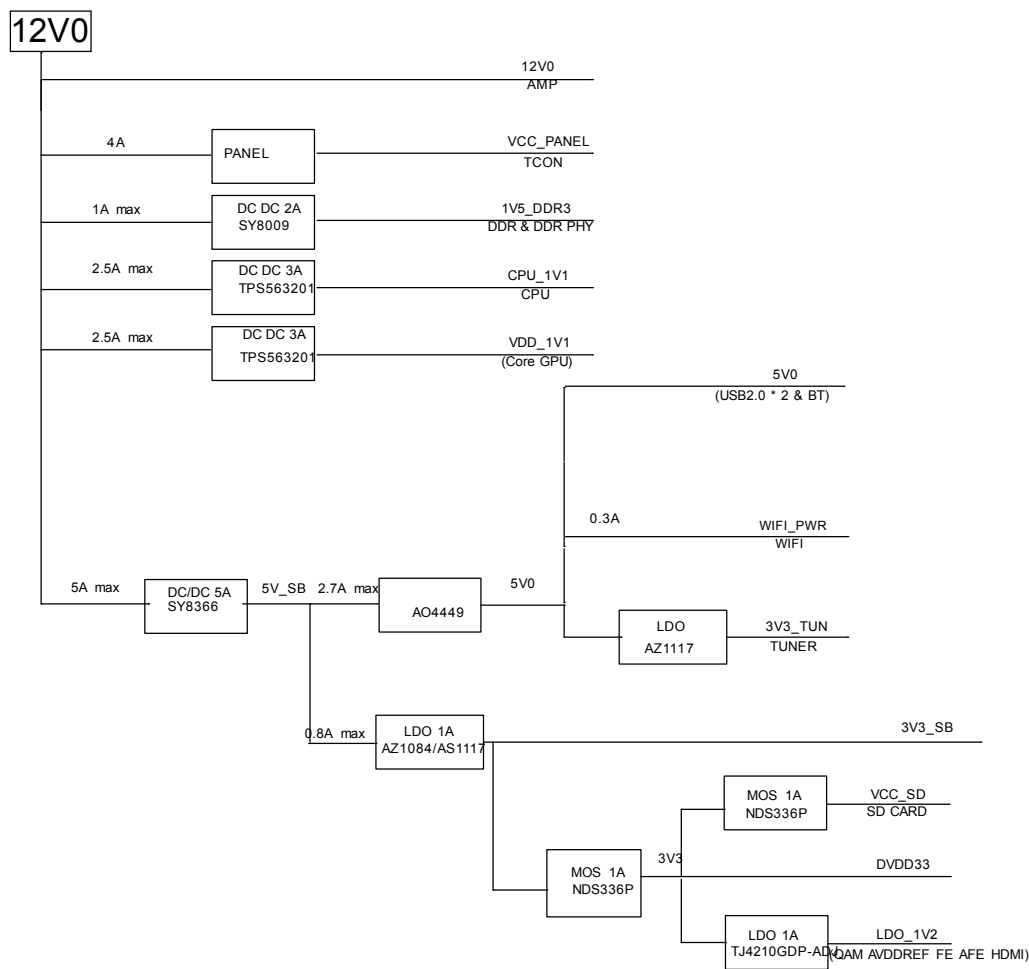
5





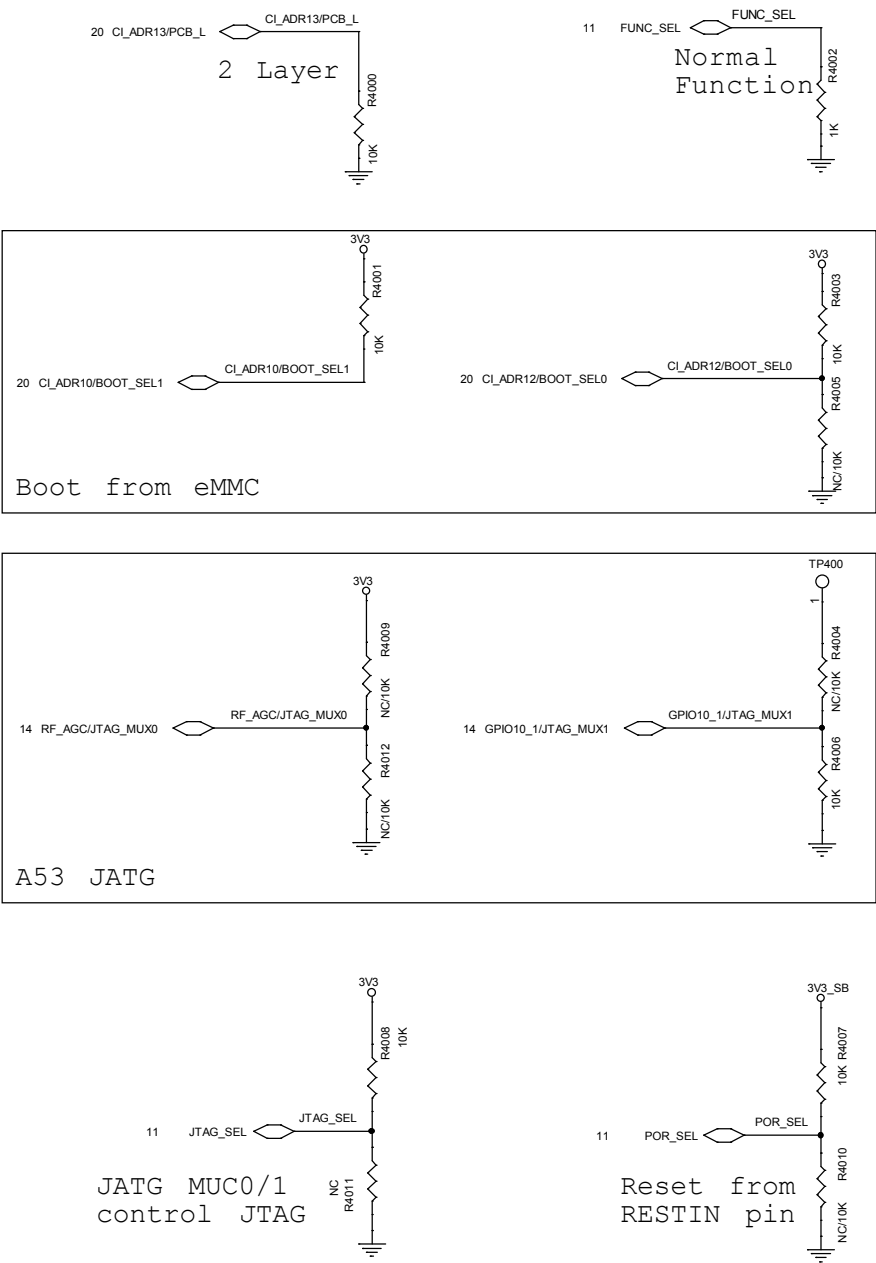
TPV (Top Victory Electronics Co., Ltd.)	OEM MODEL		Size	A3
结隔瓜组 810	TPV MODEL		Rev	
Key Component	PCB NAME		称	
Date	Friday, July 01, 2016	Sheet	2 of 21	

Power tree & Boot strap



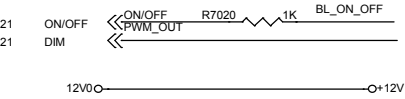
Boot Strap Selection

PCB LAYER	PCB_L	DS	0:2 LAYERS 1:4 LAYERS	0
FUNCTION MODE	FUNC_SEL	DS	0:NORMAL FUCNTION 1:TEST	0
BOOT DEVICE SEL	BOOT_SEL0	DS	0X:SPI FLASH	11
	BOOT_SEL1	US	10:FSD 11:eMMC	
JTAG CHANNEL SEL	JTAG_MUX1	S	00:A53_JTAG 01:DSP_JTAG 10:DDRC_JTAG 11:A53_JTAG	00
	JTAG_MUX0	S		
JTAG CONTROL SEL	JTAG_SEL	DS	0:registers control JTAG 1:JTAG_MUX0/1 control JTAG	1
POWER ON RESET SEL	POR_SEL	US	0:reset from RESTIN pin 1:reset from internal POR signal	1

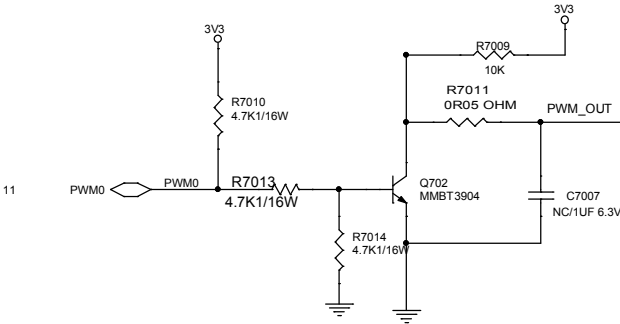


T P V (Top Victory Electronics Co . , Ltd .)		OEM MODEL		Size	A3
蛞 隔 瓜 網		TPV MODEL		Rev	
Key Component	REV310	PCB NAME		称 著	
Date	Friday, July 01, 2016	Sheet	3 of 23		

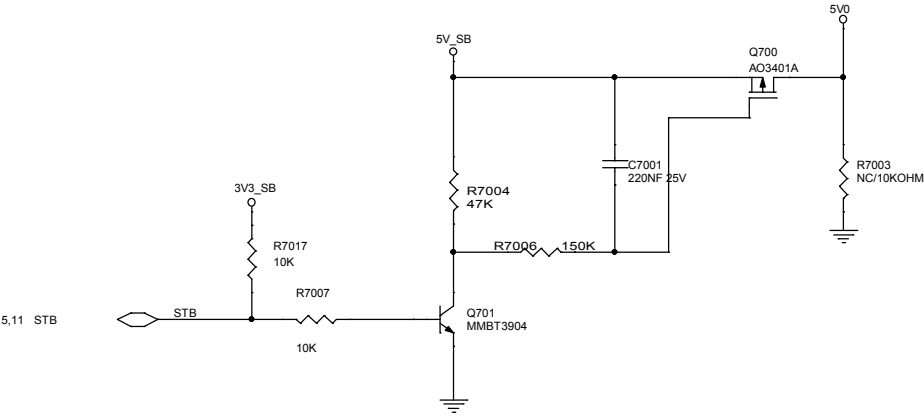
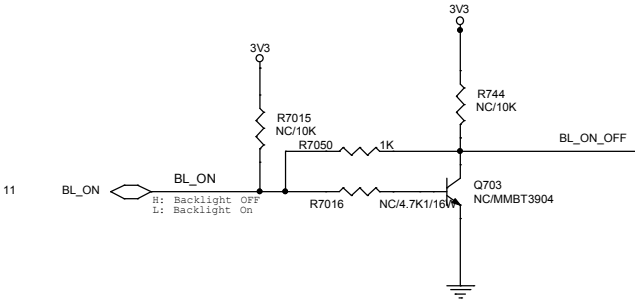
Connetor



Panel bright control



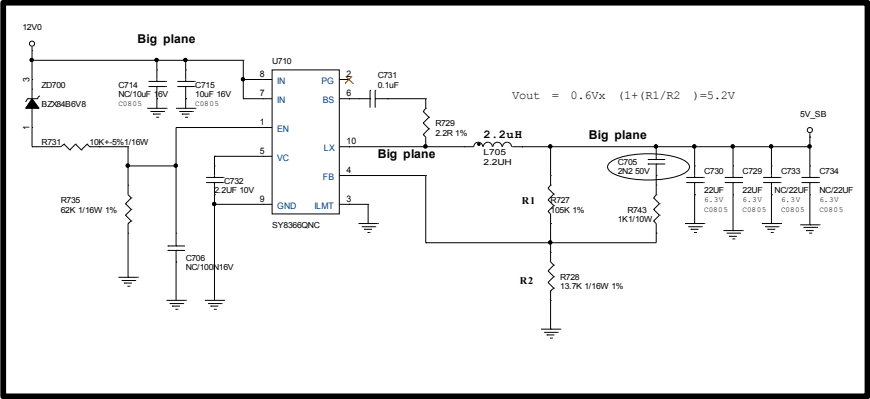
Power on off switch



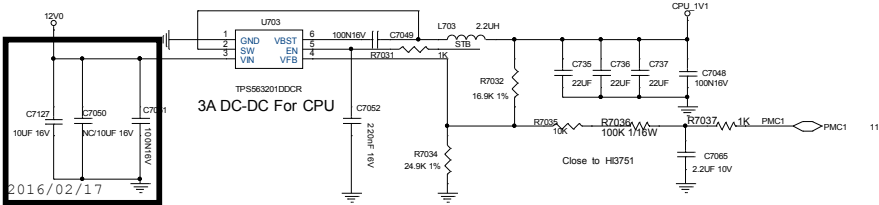
T P V (Top Victory Electronics Co . , Ltd.)		OEM MODEL		Size	A3
新 隔 瓜 銅 製		TPV MODEL		Rev	
Key Component		PCB NAME		称 號	
Date	Friday, July 01, 2016	Sheet	4 of 23		

Power supply management

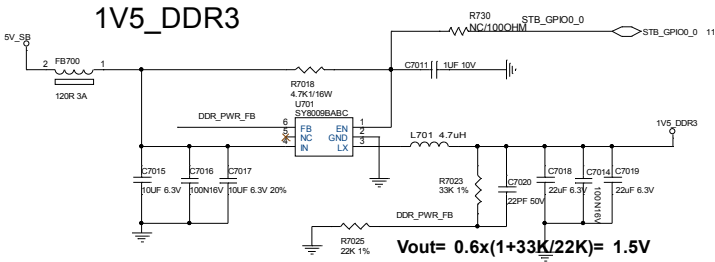
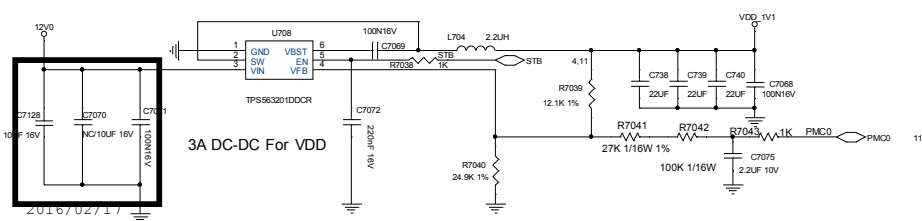
SY8368QNC: Max:8A
Vin 4V-25V



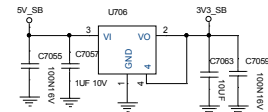
CPU_1V1



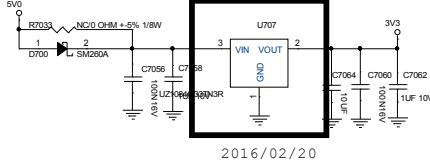
VDD_1V1



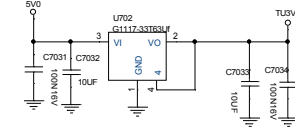
3V3_SB



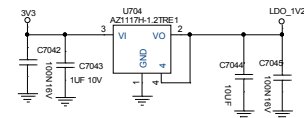
3V3



TU3V3

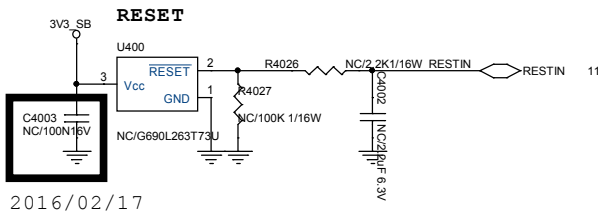
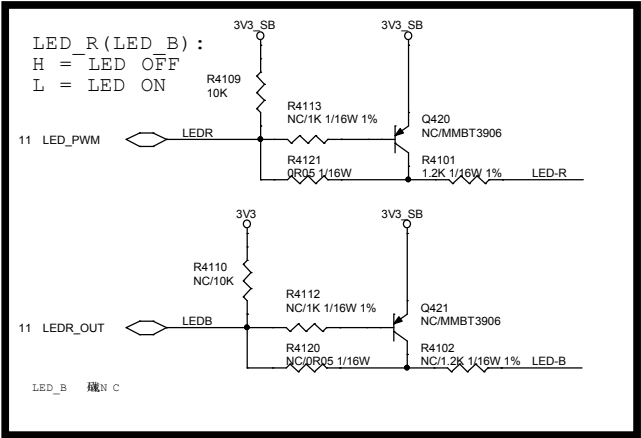
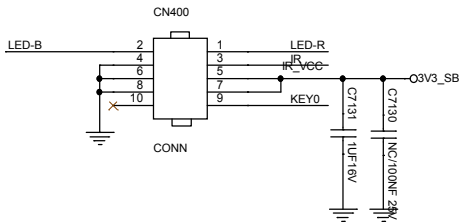


LDO_1V2

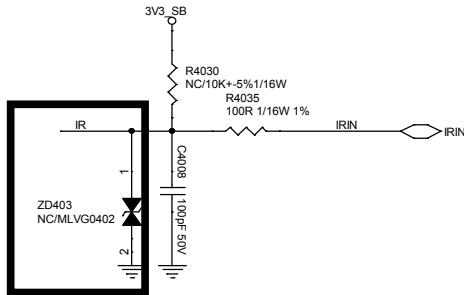
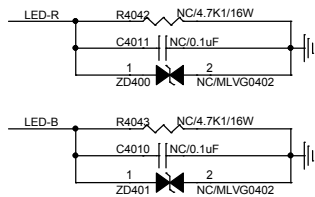


TPV (Top Victory Electronics Co., Ltd.)	OEM MODEL	Size	A2
紙橋 氏 製	TPV MODEL	Rev	
Key Component	PCB NAME	Sheet	5 of 23
Date	Friday, July 01, 2016		

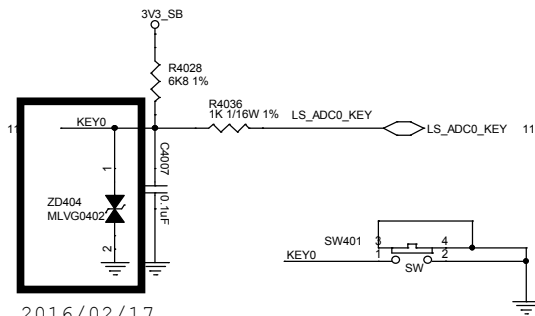
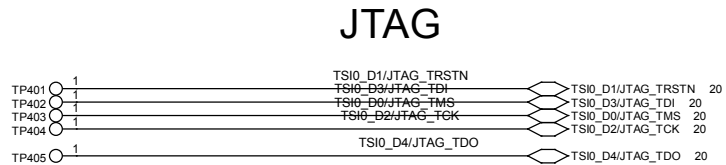
JTAG socket & IR & KEY



2016/02/17



2016/02/17

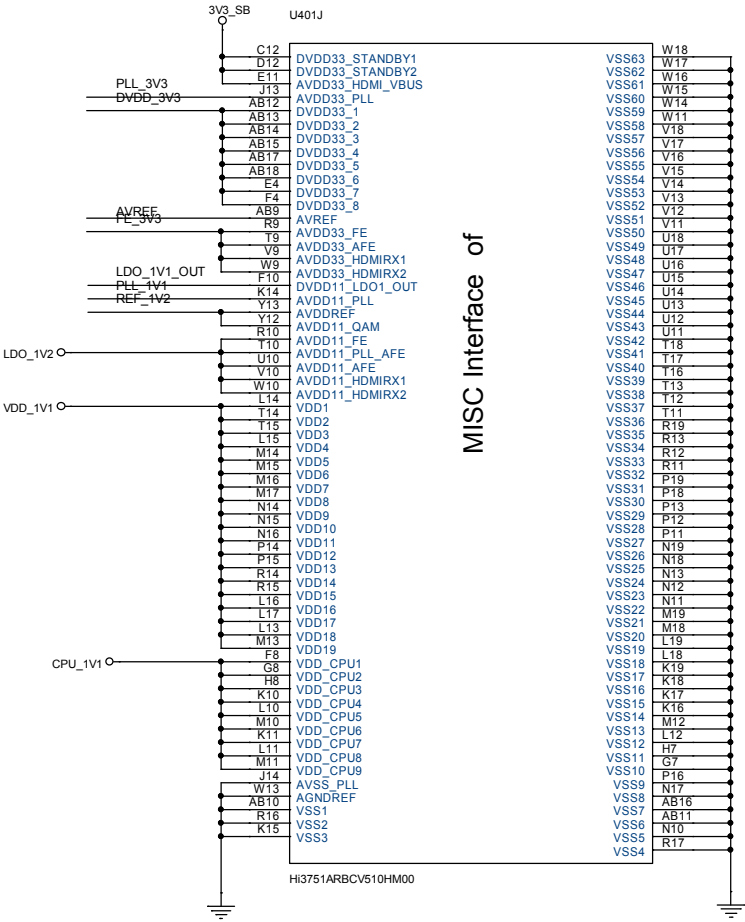
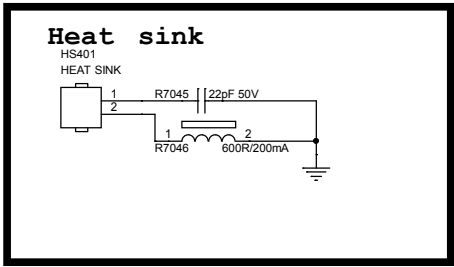
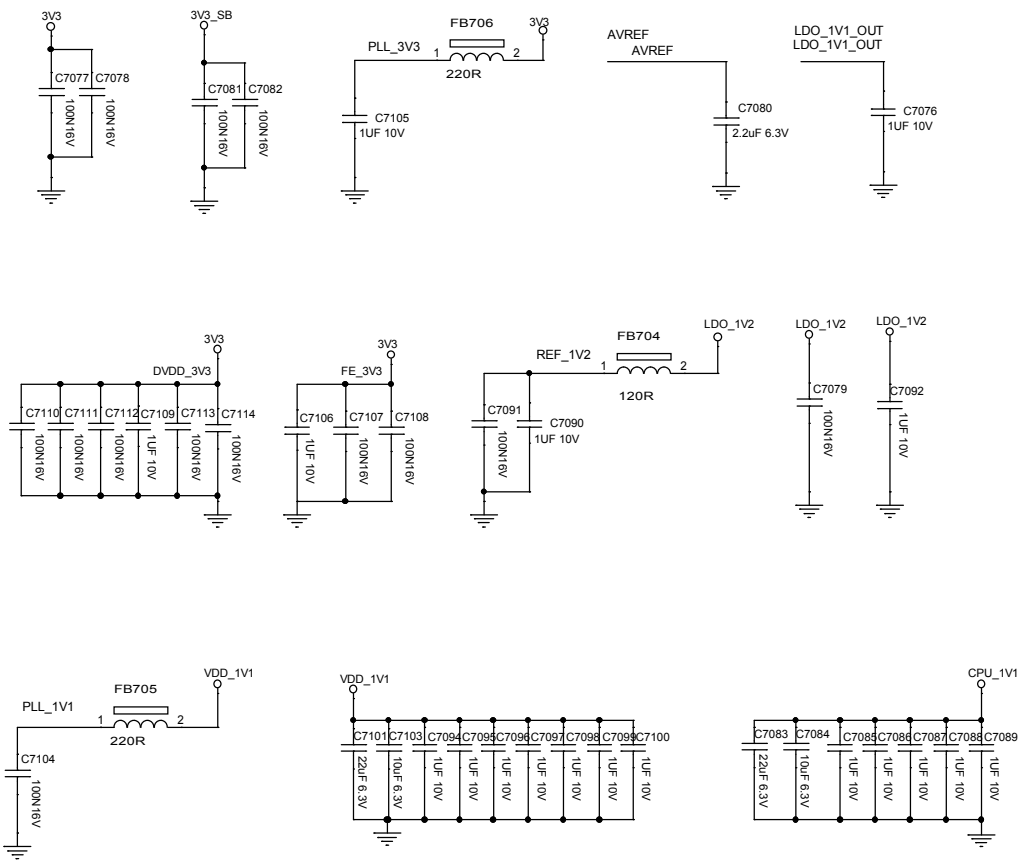


2016/02/17



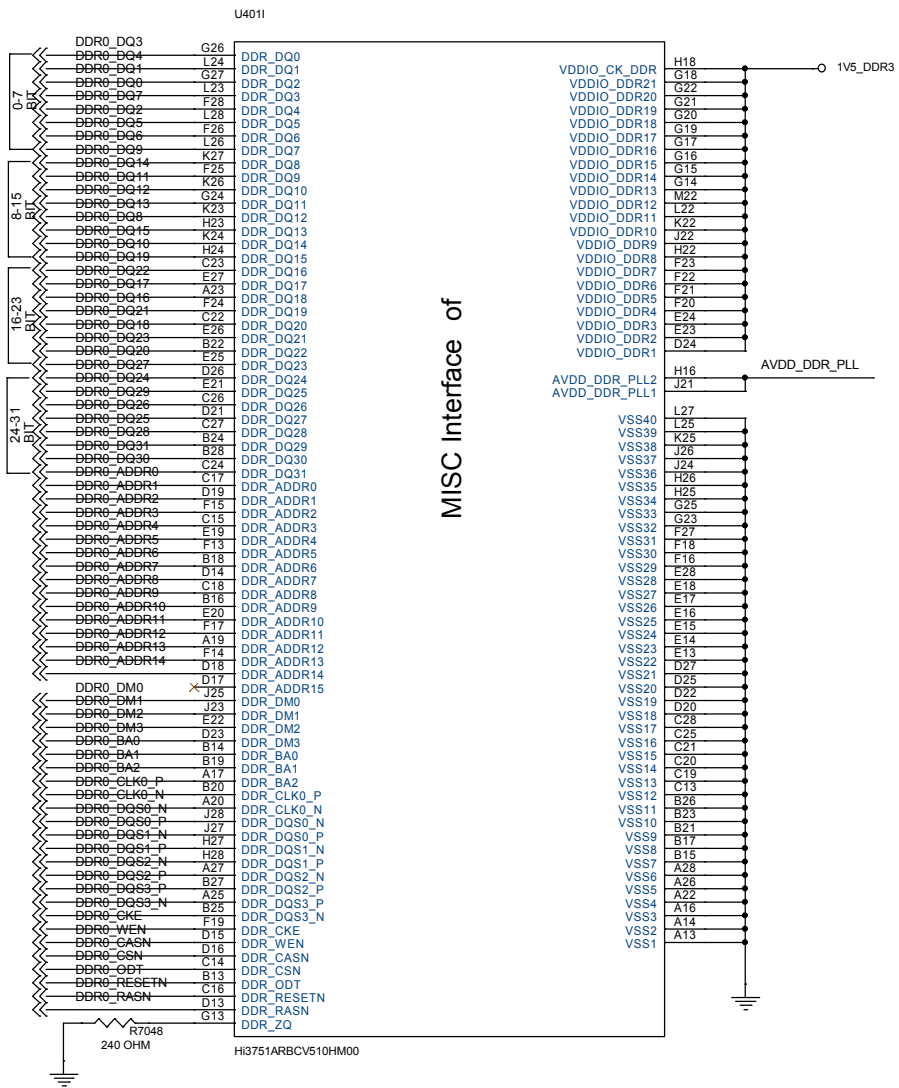
TPV (Top Victory Electronics Co., Ltd.)		OEM MODEL		Size	A3
新隔瓜銅製		TPV MODEL		Rev	
Key Component		PCB NAME		称	
Date	Friday, July 01, 2016	Sheet	6 of 23		

Chip Power



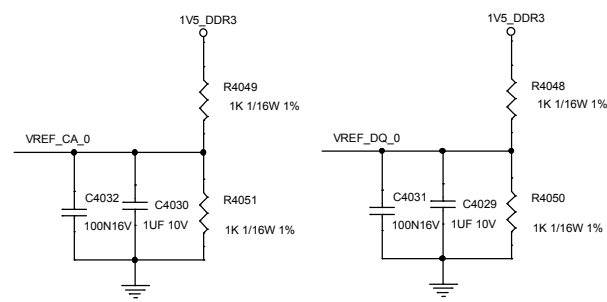
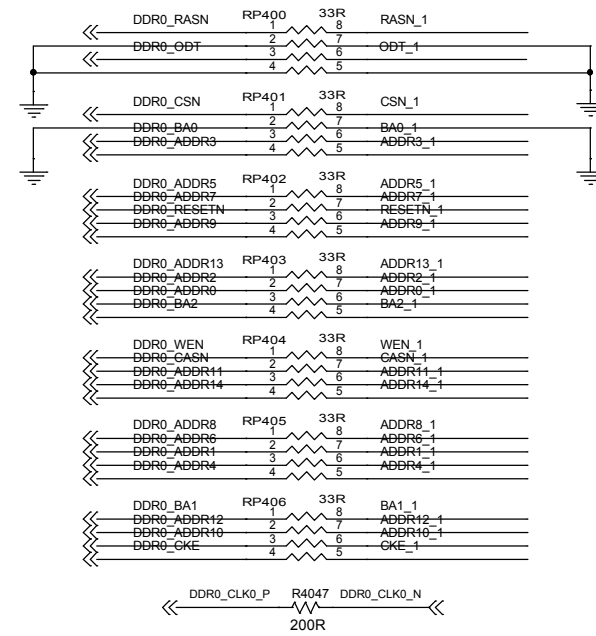
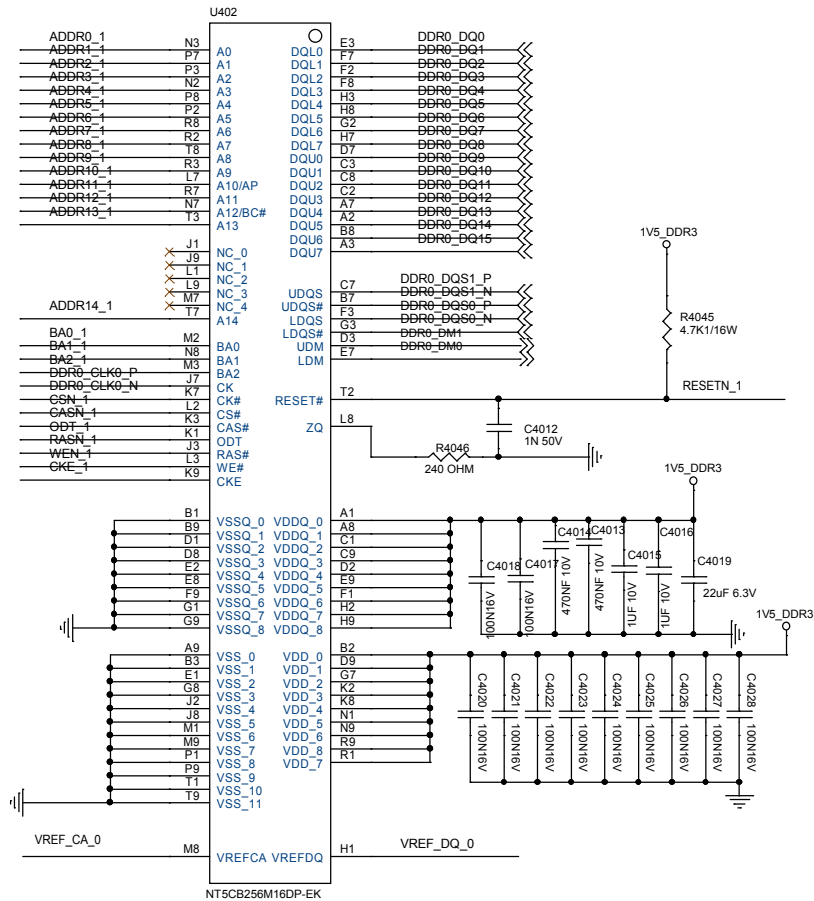
TPV (Top Victory Electronics Co . , Ltd.)				OEM MODEL		Size	A3
新隔瓜銅製				TPV MODEL		Rev	
Key Component				PCB NAME		称	号
Date	Friday, July 01, 2016			Sheet	7 of 23		

DDRIII_Chip Power



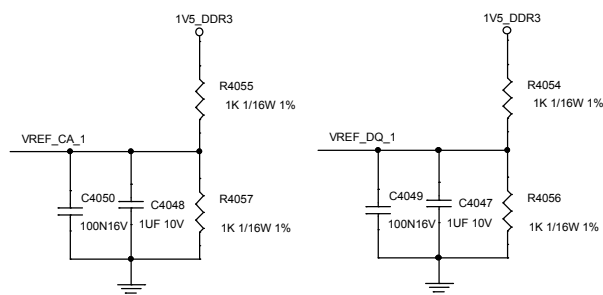
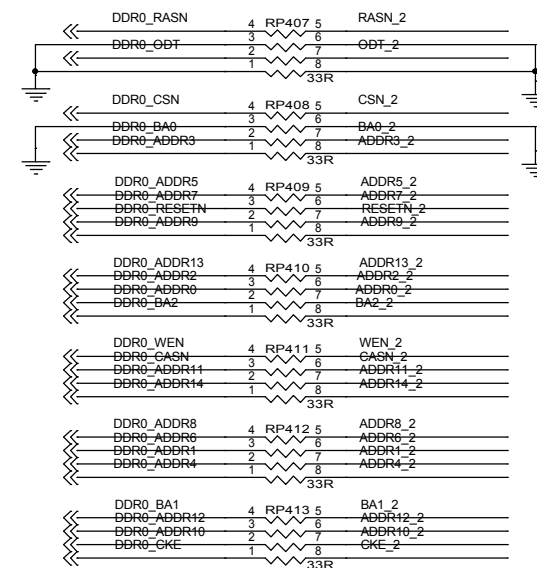
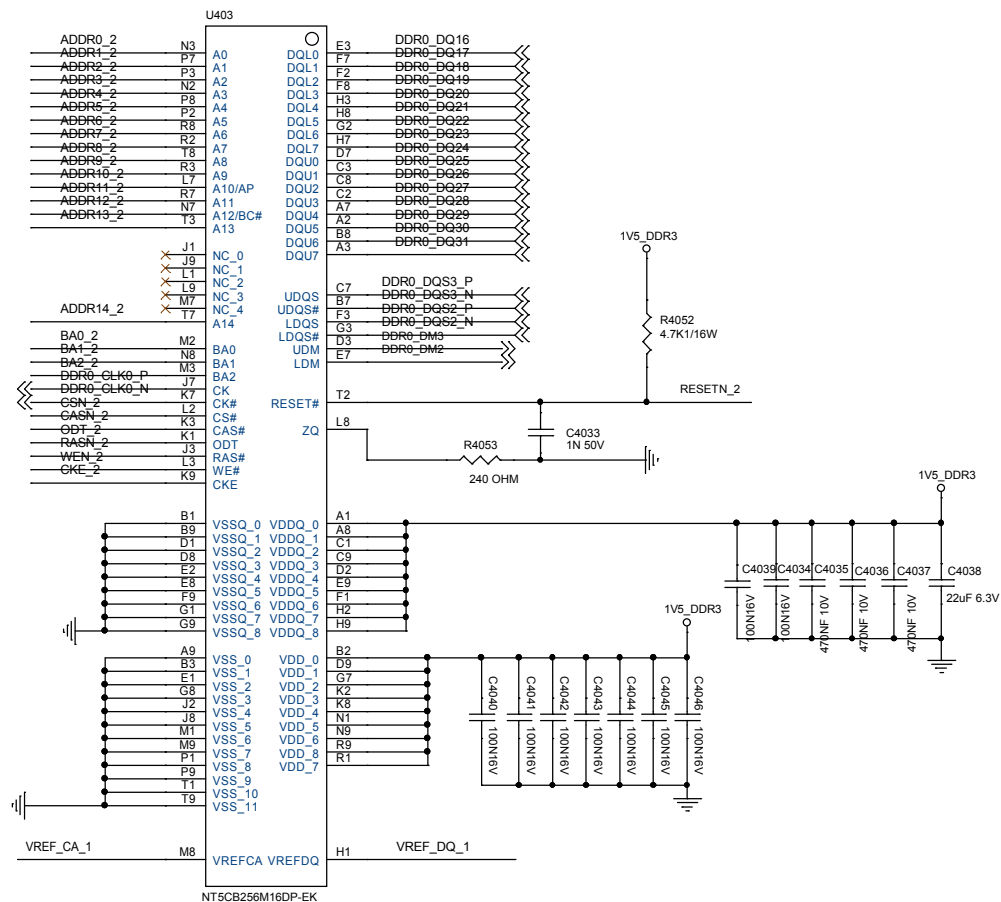
TPV (Top Victory Electronics Co . , Ltd.)		OEM MODEL		Size	A3
新隔瓜銅製		TPV MODEL		Rev	
Key Component		PCB NAME		称 號	
Date	Friday, July 01, 2016	Sheet	8 of 23		

DDRIII_1



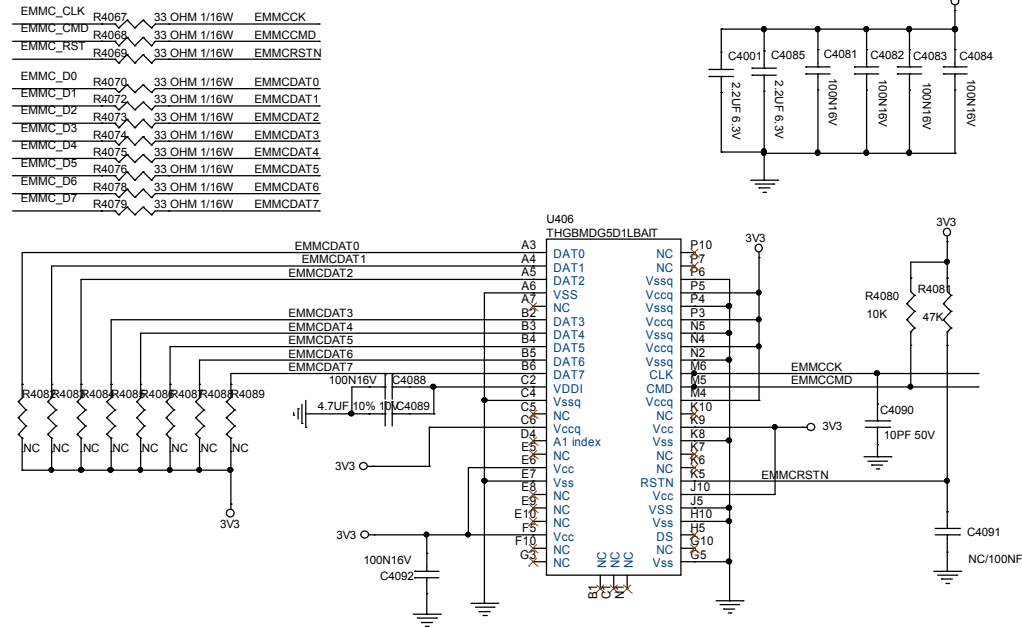
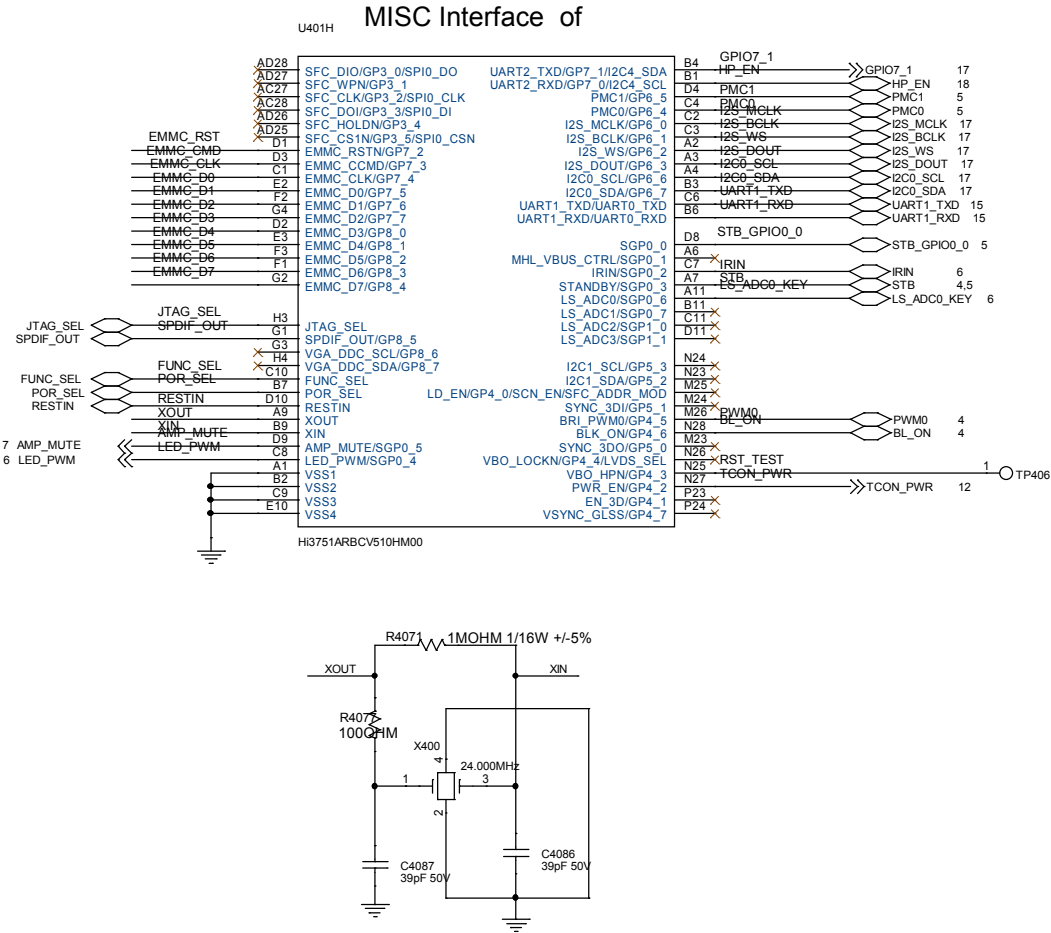
TPV (Top Victory Electronics Co., Ltd.)		OEM MODEL		Size	A3
新隔瓜銅製		TPV MODEL		Rev	
Key Component		PCB NAME		称	號
Date	Friday, July 01, 2016	Sheet	9 of 23		

DDRII_2



T P V (Top Victory Electronics Co . , Ltd .)		OEM MODEL		Size	A3
紙隔瓜網複		TPV MODEL		Rev	
Key Component		PCB NAME		称 號	
Date	Friday, July 01, 2016	Sheet	10 of 23		

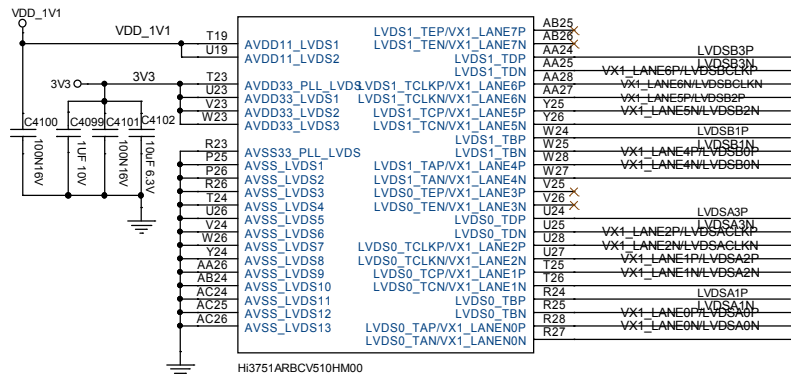
eMMC & eeprom & xtal



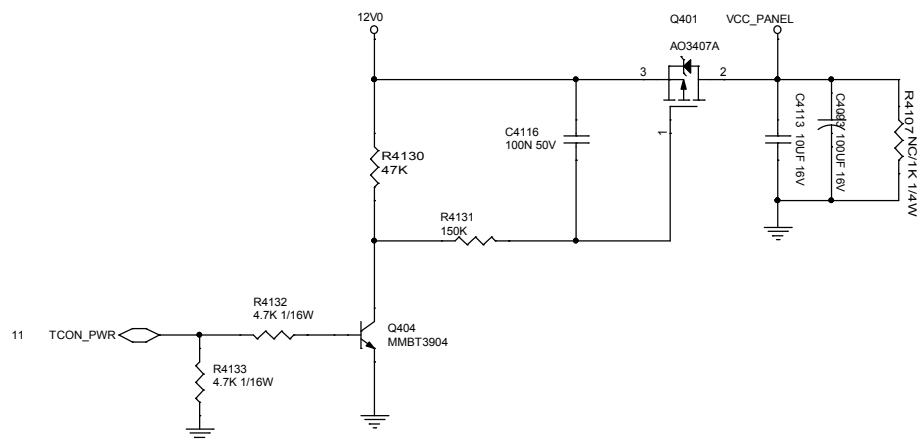
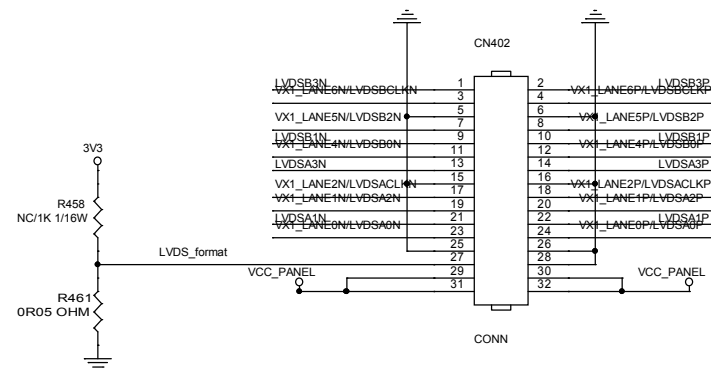
T P V (Top Victory Electronics Co . , Ltd .)				OEM MODEL		Size	A3
話 隔 瓜 網 製				TPV MODEL		Rev	
Key Component				PCB NAME		称 號	
Date	Friday, July 01, 2016			Sheet	11 of 23		

V-BY-ONE socket

MISC Interface of U401G



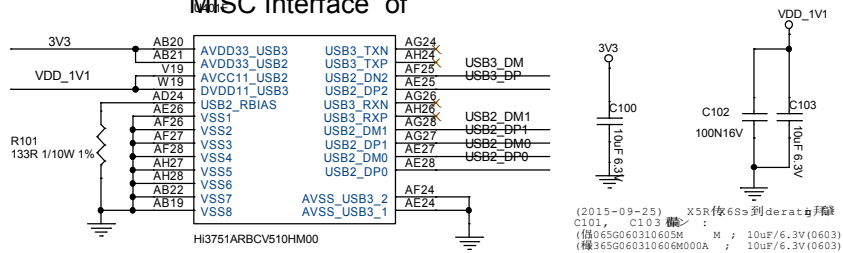
FOR FULL HD PANEL



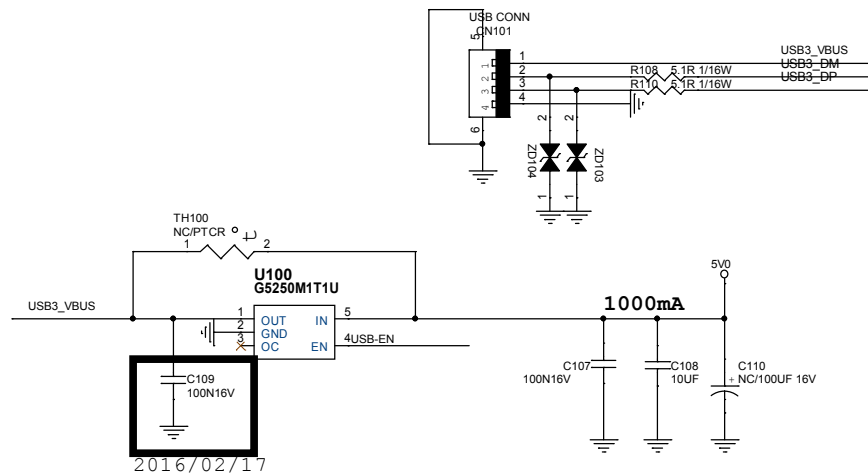
T P V (Top Victory Electronics Co., Ltd.)		OEM MODEL		Size	A3
紙隔瓜網複		TPV MODEL		Rev	
Key Component		PCB NAME		称 義	
Date	Friday, July 01, 2016	Sheet	12 of 23		

USB2.0 & USB3.0 & WIFI

MISC Interface of

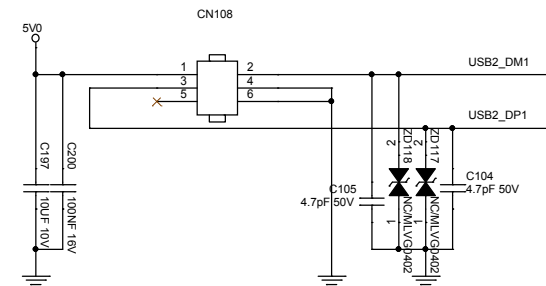


USB2.0 Port

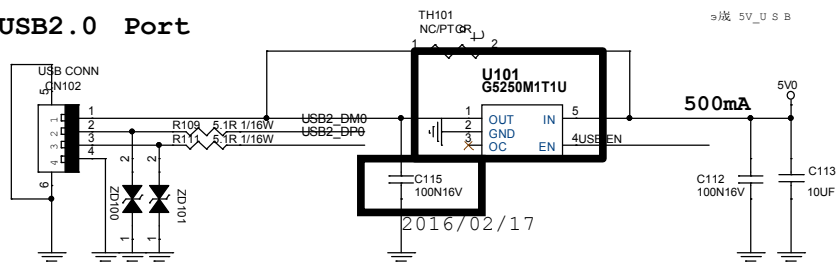


USB-EN R191 100OHM1/16W USB-EN1 USB-EN1 20

WIFI & BT (Internal)



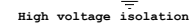
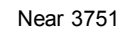
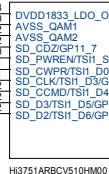
USB2.0 Port



U101/G5250K1T1U(1.5A) 500mA G5250M1T1U (A)
for cost down(2016/01/25)

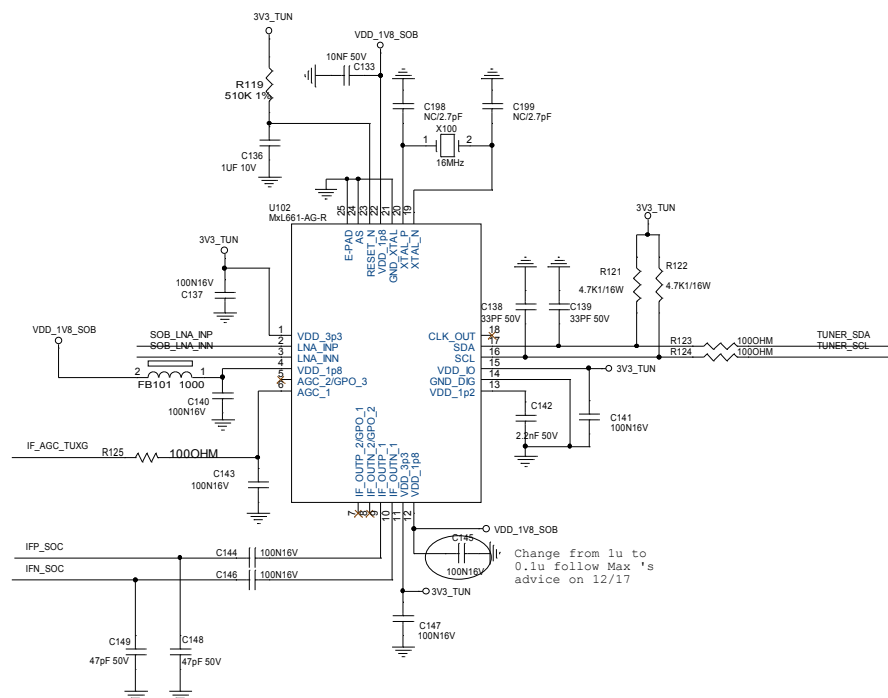
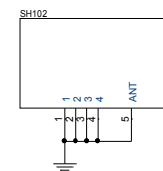


TPV (Top Victory Electronics Co., Ltd.)		OEM MODEL		Size	A3
新隔瓜銅線		TPV MODEL		Rev	
Key Component		PCB NAME		称	番
Date	Friday, July 01, 2016	Sheet	13 of 23		



reserve on bottom on 3/28

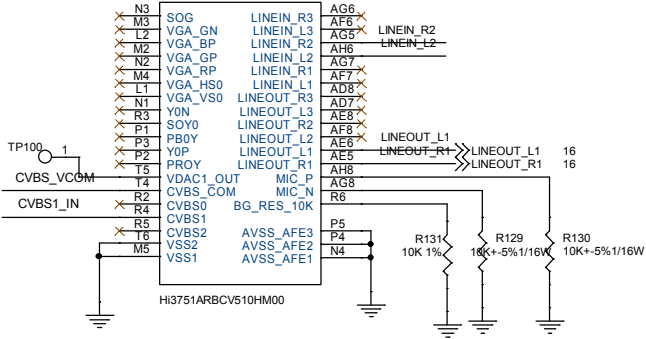
Shield Cover



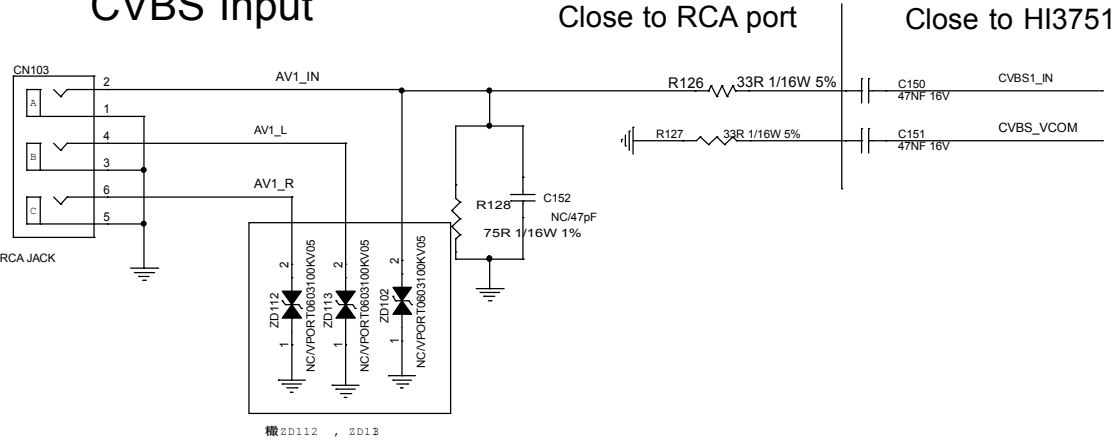
TPV (Top Victory Electronics Co., Ltd.)	OEM MODEL		Size	Custom
結構 爪 鎖 環	TPV MODEL		Rev	
KeyComponent	PCB NAME		稱 號	
Date	Friday, July 01, 2016	Sheet	14 of 23	

MIC & YPBPR & AV IN & CVBS OUT

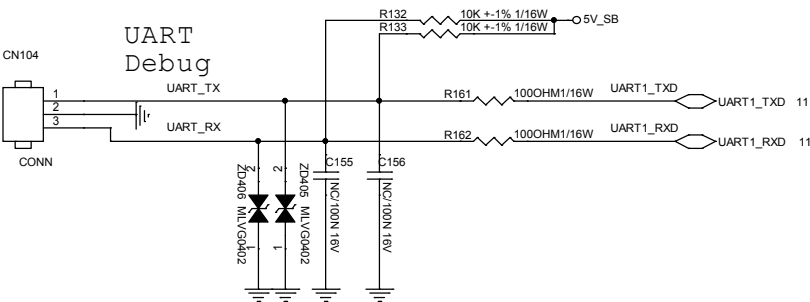
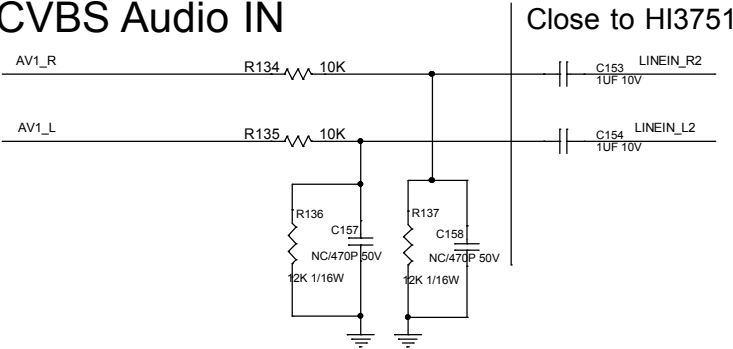
MISC Interface of
U401C



CVBS Input



CVBS Audio IN

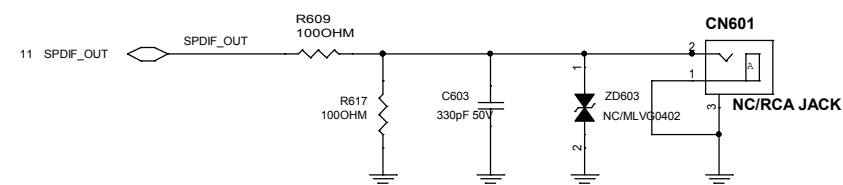
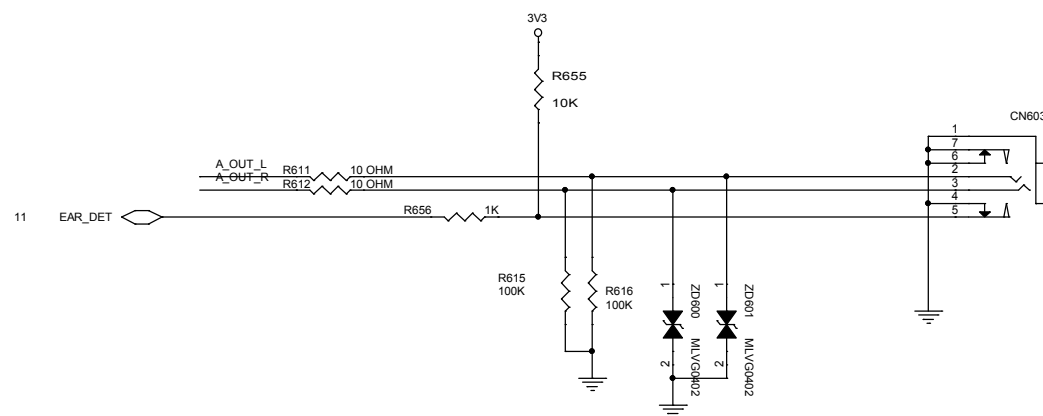
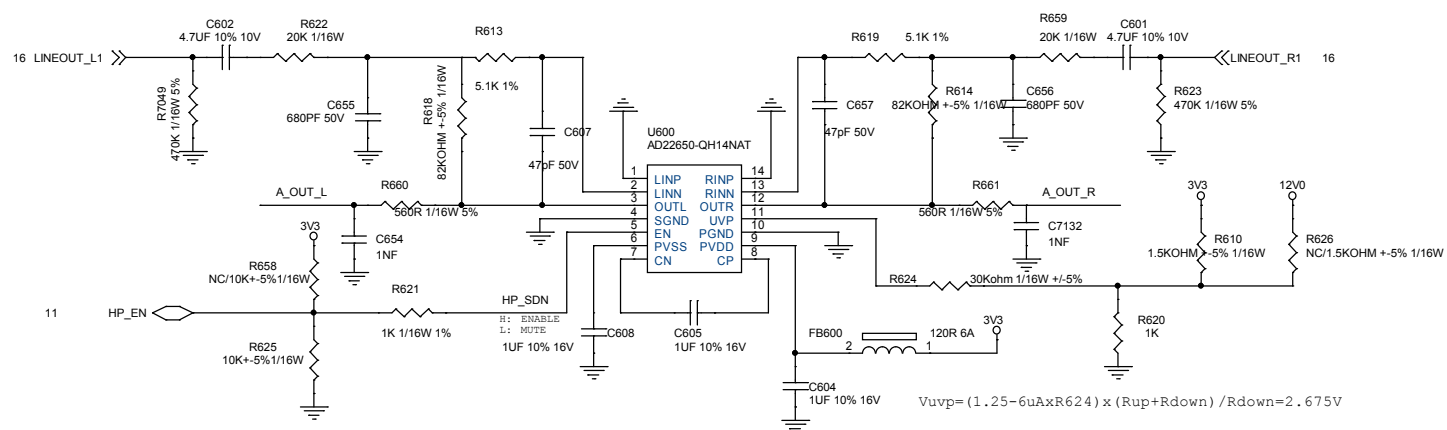


埃CN108(UAR T debu g connector)
(2016/01/27)



T P V (Top Victory Electronics Co . , Ltd .)		OEM MODEL		Size	A3
新 隔 瓜 銅 製		TPV MODEL		Rev	
Key Component		PCB NAME		称 號	
Date	Friday, July 01, 2016	Sheet	15 of 23		

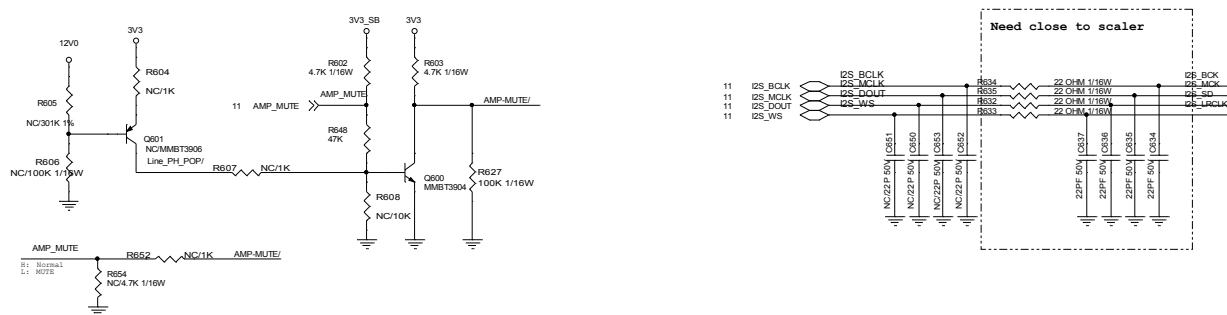
Audio Output



2016/02/22



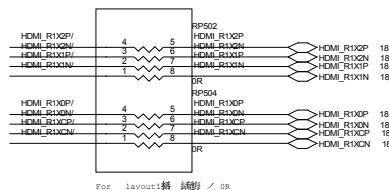
T P V (Top Victory Electronics Co . , Ltd .)		OEM MODEL		Size	A3
紙隔瓜網複		TPV MODEL		Rev	
Key Component		PCB NAME		称 義	
Date	Friday, July 01, 2016	Sheet	16 of 23		



U401B



HDMI1 (ARC)



The diagram illustrates the chemical structures and reactions of HMDI-PCXN and HMDI-R2XNP systems. It shows the reaction of HMDI-R2XNP (4) with HMDI-R2XNP (5) to form HMDI-R2XNP (18). The diagram also includes a legend for the HMDI-R2XNP and HMDI-R2XNP systems.

MISC Interface of



CONTENTS

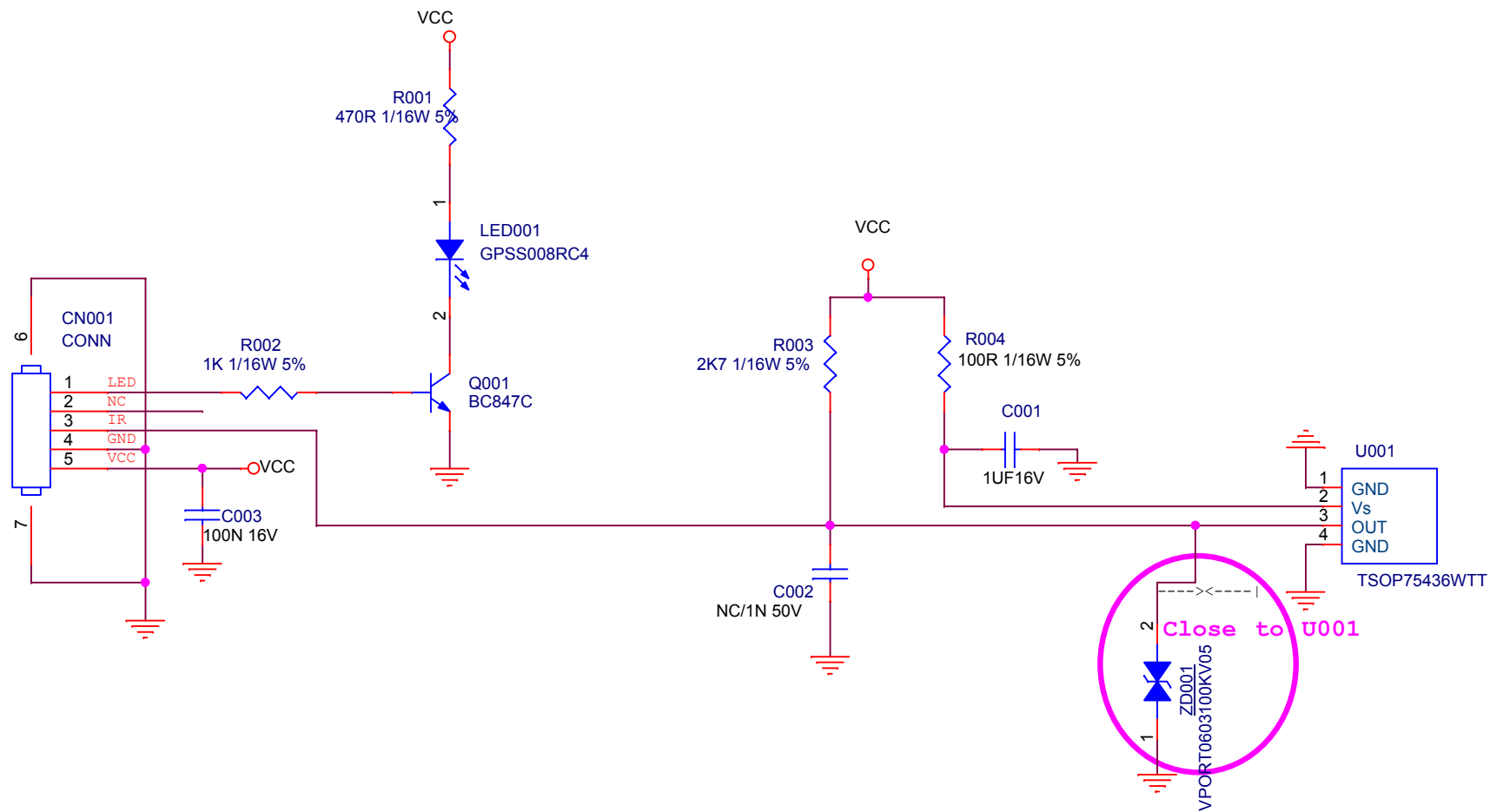
REVISION HISTORY

01.	Cover
02.	IR_board

Date	Author	Ver	Reviser reason	FN
12/19 2012	Harrison	A		
04/16 2013	Jamie Tsai		This IR_LED board modification is for LD58U3000 lighting logo design.	



TPV (Top Victory Electronics Co., Ltd.)			OEM MODEL	X	Size	Custom
結構 瓜 網 腹			TPV MODEL		Rev	A
Key Component	01-Cover		PCB NAME		称 差	<称差>
Date			Sheet	1 of 2		



T P V (Top Victory Electronics Co . , Ltd.)	OEM MODEL		Size	A
結 隔 瓜 網 腹	TPV MODEL		Rev	A
Key Component	IR BOARD	PCB NAME	称 爹	<称爹>
Date		Sheet	2 of 2	